

Summary of Key Listing and Sales Metrics

A summary of the key metrics selected to be included in the report. MLS sources where licensed.

Key Metrics	Apr 2022	Apr 2021	+ / -	YTD 2022	YTD 2021	+ / -
Listing Activity Charts Metrics						
New Listing Count	18	20	-10%	53	62	-14.5%
New Listing Volume	\$16,958,900	\$21,855,000	-22.4%	\$72,984,900	\$56,634,400	+28.9%
Active Listing Count	34	58	-41.4%	N/A	N/A	
Active Listing Volume	\$57,289,400	\$90,051,000	-36.4%	N/A	N/A	
Average Listing Price	\$1,684,982	\$1,552,603	+8.5%	\$1,802,970	\$1,391,512	+29.6%
Median Listing Price	\$812,000	\$775,000	+4.8%	\$822,673	\$737,408	+11.6%
Median Days in RPR	38	105.5	-64%	105.23	126.9	-17.1%
Months of Inventory	2.8	3.4	-17%	1.9	8.2	-77.3%
Absorption Rate	35.29%	29.31%	+6%	53.85%	12.24%	+41.6%
Sales Activity Charts Metrics						
New Pending Sales Count	8	13	-38.5%	39	64	-39.1%
New Pending Sales Volume	\$7,159,000	\$7,016,000	+2%	\$38,217,000	\$56,412,900	-32.3%
Pending Sales Count	4	30	-86.7%	N/A	N/A	
Pending Sales Volume	\$3,494,000	\$19,910,500	-82.5%	N/A	N/A	
Closed Sales Count	19	17	+11.8%	48	56	-14.3%
Closed Sales Volume	\$18,108,674	\$14,493,500	+24.9%	\$52,758,862	\$50,035,400	+5.4%
Average Sales Price	\$953,088	\$852,559	+11.8%	\$1,099,143	\$893,489	+23%
Median Sales Price	\$754,374	\$712,000	+6%	\$905,470	\$683,661	+32.4%

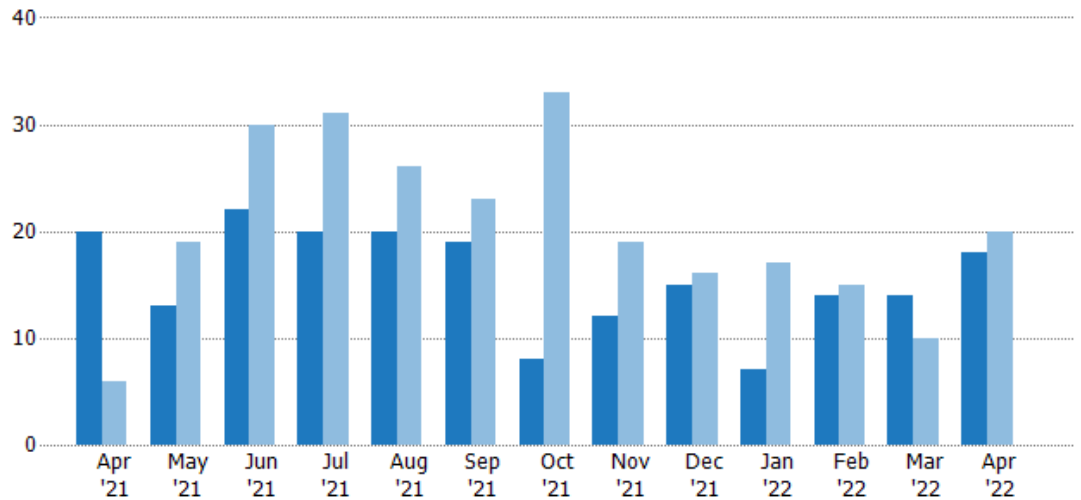
New Listings

The number of new residential listings that were added each month.

Filters Used

ZIP: Stowe, VT 05672
Property Type:
Condo/Townhouse/Apt., Single
Family

Month/ Year	Count	% Chg.
Apr '22	18	-10%
Apr '21	20	233.3%
Apr '20	6	116.7%



Current Year	20	13	22	20	20	19	8	12	15	7	14	14	18
Prior Year	6	19	30	31	26	23	33	19	16	17	15	10	20
Percent Change from Prior Year	233%	-32%	-27%	-35%	-23%	-17%	-76%	-37%	-6%	-59%	-7%	40%	-10%

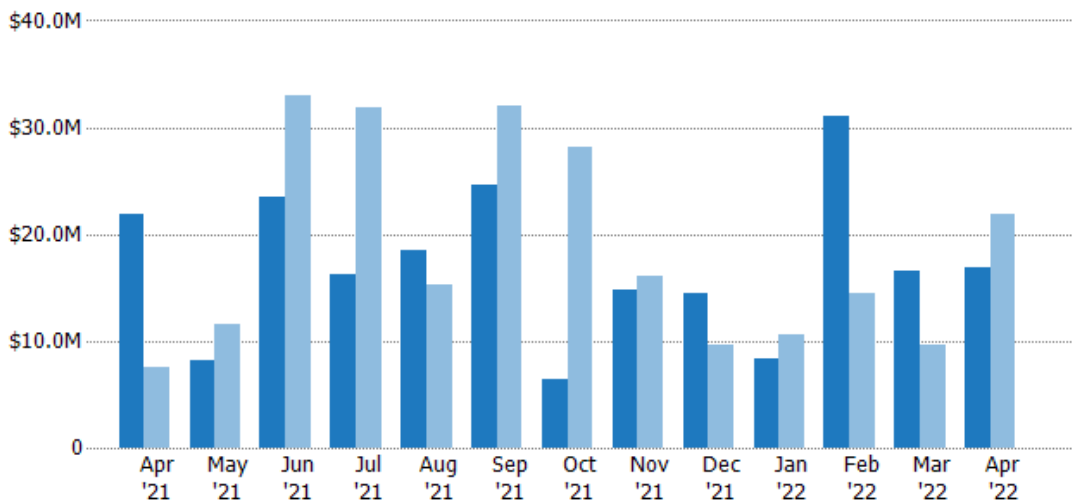
New Listing Volume

The sum of the listing price of residential listings that were added each month.

Filters Used

ZIP: Stowe, VT 05672
Property Type:
Condo/Townhouse/Apt., Single
Family

Month/ Year	Volume	% Chg.
Apr '22	\$17M	-22.4%
Apr '21	\$21.9M	189.7%
Apr '20	\$7.54M	0.8%



Current Year	\$21.9M	\$8.23M	\$23.5M	\$16.2M	\$18.4M	\$24.6M	\$6.44M	\$14.8M	\$14.5M	\$8.4M	\$31M	\$16.6M	\$17M
Prior Year	\$7.54M	\$11.5M	\$32.9M	\$31.9M	\$15.3M	\$32M	\$28.2M	\$16.1M	\$9.58M	\$10.6M	\$14.5M	\$9.7M	\$21.9M
Percent Change from Prior Year	190%	-29%	-29%	-49%	20%	-23%	-77%	-9%	52%	-20%	114%	71%	-22%

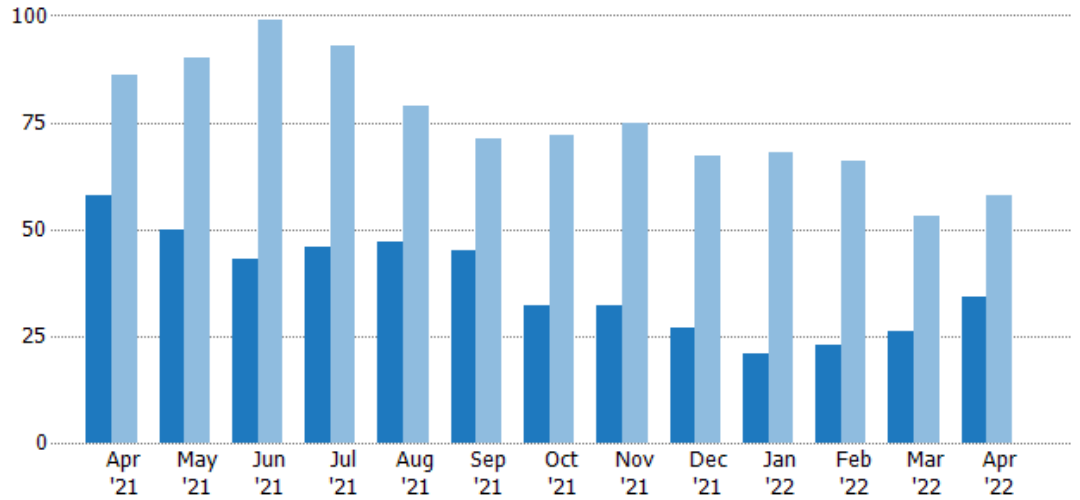
Active Listings

The number of active residential listings at the end of each month.

Filters Used

ZIP: Stowe, VT 05672
Property Type:
Condo/Townhouse/Apt., Single
Family

Month/ Year	Count	% Chg.
Apr '22	34	-41.4%
Apr '21	58	-32.6%
Apr '20	86	-2.3%



Current Year	58	50	43	46	47	45	32	32	27	21	23	26	34
Prior Year	86	90	99	93	79	71	72	75	67	68	66	53	58
Percent Change from Prior Year	-33%	-44%	-57%	-51%	-41%	-37%	-56%	-57%	-60%	-69%	-65%	-51%	-41%

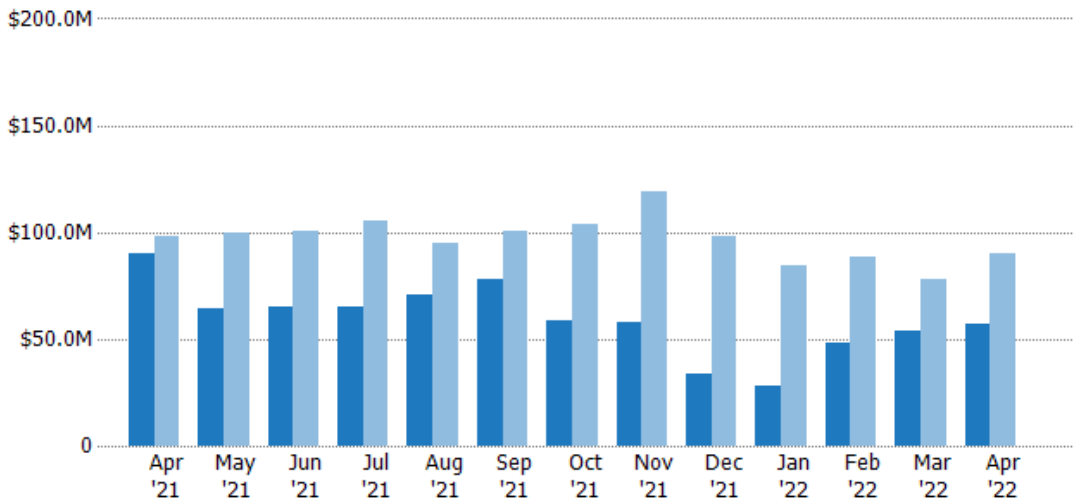
Active Listing Volume

The sum of the listing price of active residential listings at the end of each month.

Filters Used

ZIP: Stowe, VT 05672
Property Type:
Condo/Townhouse/Apt., Single
Family

Month/ Year	Volume	% Chg.
Apr '22	\$57.3M	-36.4%
Apr '21	\$90.1M	-8%
Apr '20	\$97.9M	-23.8%



Current Year	\$90.1M	\$64.1M	\$65.4M	\$65M	\$70.3M	\$78.1M	\$58.9M	\$57.9M	\$33.3M	\$28.3M	\$47.8M	\$54.1M	\$57.3M
Prior Year	\$97.9M	\$99.5M	\$101M	\$105M	\$94.7M	\$101M	\$104M	\$119M	\$98.4M	\$84.4M	\$88.7M	\$77.8M	\$90.1M
Percent Change from Prior Year	-8%	-36%	-35%	-38%	-26%	-22%	-43%	-51%	-66%	-66%	-46%	-30%	-36%

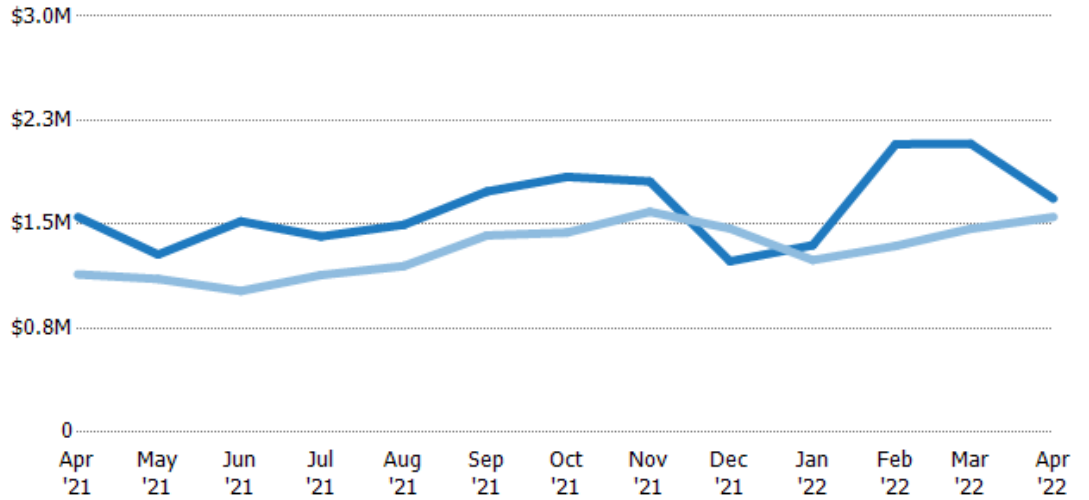
Average Listing Price

The average listing price of active residential listings at the end of each month.

Filters Used

ZIP: Stowe, VT 05672
Property Type:
Condo/Townhouse/Apt., Single
Family

Month/ Year	Price	% Chg.
Apr '22	\$1.68M	8.5%
Apr '21	\$1.55M	36.4%
Apr '20	\$1.14M	-21.9%



Current Year	\$1.55M	\$1.28M	\$1.52M	\$1.41M	\$1.5M	\$1.74M	\$1.84M	\$1.81M	\$1.23M	\$1.35M	\$2.08M	\$2.08M	\$1.68M
Prior Year	\$1.14M	\$1.11M	\$1.02M	\$1.13M	\$1.2M	\$1.42M	\$1.44M	\$1.59M	\$1.47M	\$1.24M	\$1.34M	\$1.47M	\$1.55M
Percent Change from Prior Year	36%	16%	49%	25%	25%	22%	28%	14%	-16%	9%	55%	42%	9%

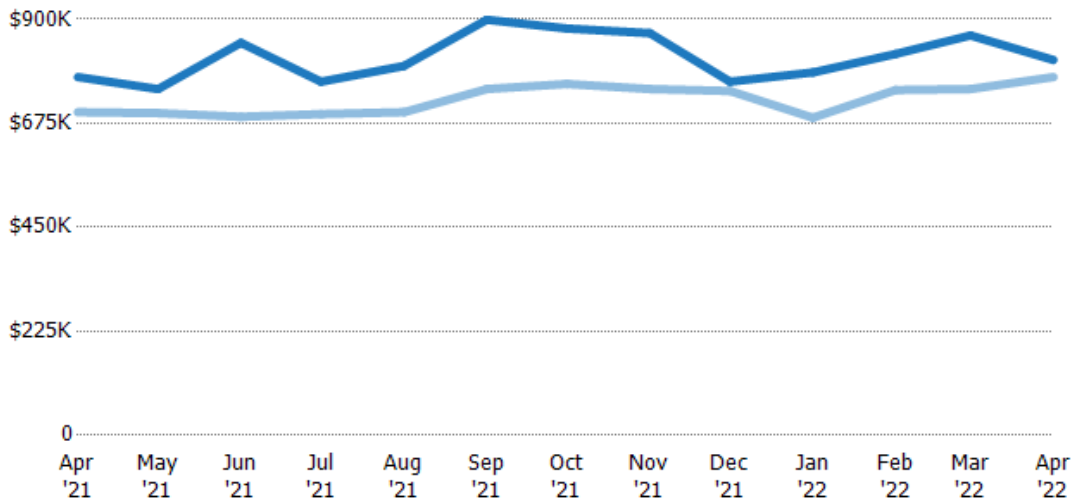
Median Listing Price

The median listing price of active residential listings at the end of each month.

Filters Used

ZIP: Stowe, VT 05672
Property Type:
Condo/Townhouse/Apt., Single
Family

Month/ Year	Price	% Chg.
Apr '22	\$812K	4.8%
Apr '21	\$775K	10.9%
Apr '20	\$699K	-18.8%



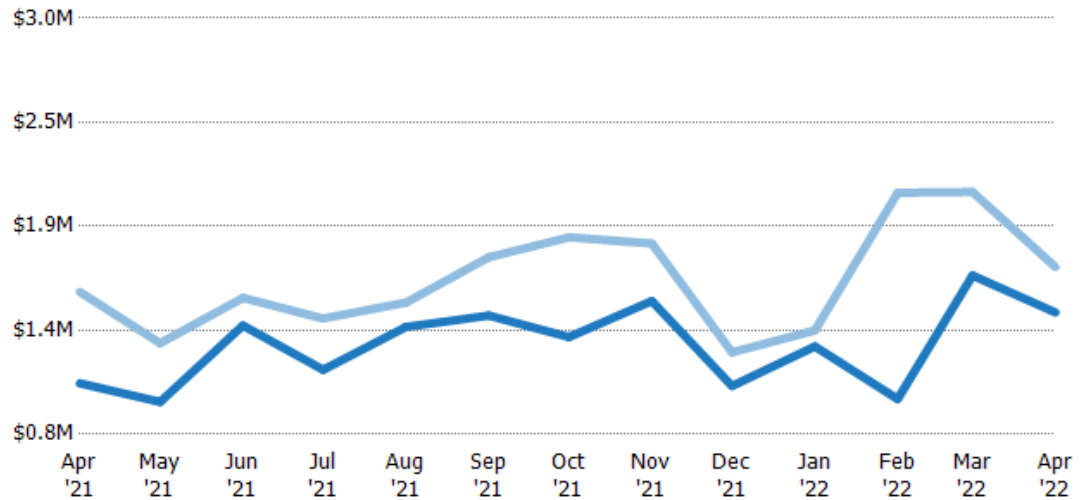
Current Year	\$775K	\$749K	\$849K	\$765K	\$799K	\$899K	\$880K	\$870K	\$765K	\$785K	\$825K	\$865K	\$812K
Prior Year	\$699K	\$697K	\$689K	\$695K	\$699K	\$749K	\$760K	\$749K	\$745K	\$687K	\$747K	\$749K	\$775K
Percent Change from Prior Year	11%	7%	23%	10%	14%	20%	16%	16%	3%	14%	10%	15%	5%

Average Listing Price vs Average Est Value

The average listing price as a percentage of the average AVM or RVM® valuation estimate for active listings each month.

Filters Used

ZIP: Stowe, VT 05672
Property Type:
Condo/Townhouse/Apt., Single
Family



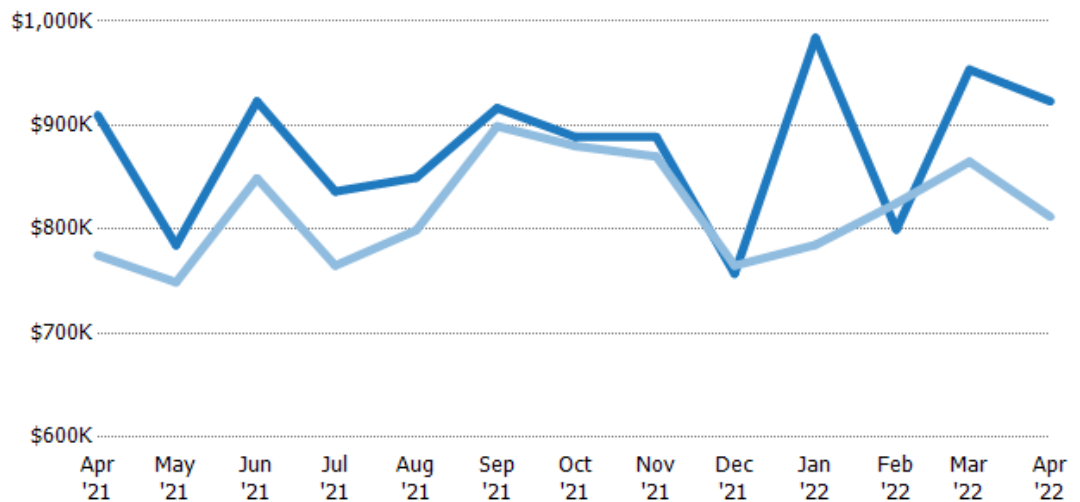
Avg Est Value	\$1.07M	\$971K	\$1.38M	\$1.14M	\$1.37M	\$1.43M	\$1.31M	\$1.5M	\$1.06M	\$1.26M	\$986K	\$1.64M	\$1.44M
Avg Listing Price	\$1.55M	\$1.28M	\$1.52M	\$1.41M	\$1.5M	\$1.74M	\$1.84M	\$1.81M	\$1.23M	\$1.35M	\$2.08M	\$2.08M	\$1.68M
Avg Listing Price as a % of Avg Est Value	145%	132%	111%	124%	109%	122%	140%	120%	117%	107%	211%	127%	117%

Median Listing Price vs Median Est Value

The median listing price as a percentage of the median AVM or RVM® valuation estimate for active listings each month.

Filters Used

ZIP: Stowe, VT 05672
Property Type:
Condo/Townhouse/Apt., Single
Family



Median Est Value	\$910K	\$785K	\$923K	\$836K	\$850K	\$917K	\$889K	\$889K	\$757K	\$984K	\$800K	\$954K	\$923K
Median Listing Price	\$775K	\$749K	\$849K	\$765K	\$799K	\$899K	\$880K	\$870K	\$765K	\$785K	\$825K	\$865K	\$812K
Med Listing Price as a % of Med Est Value	85%	95%	92%	91%	94%	98%	99%	98%	101%	80%	103%	91%	88%

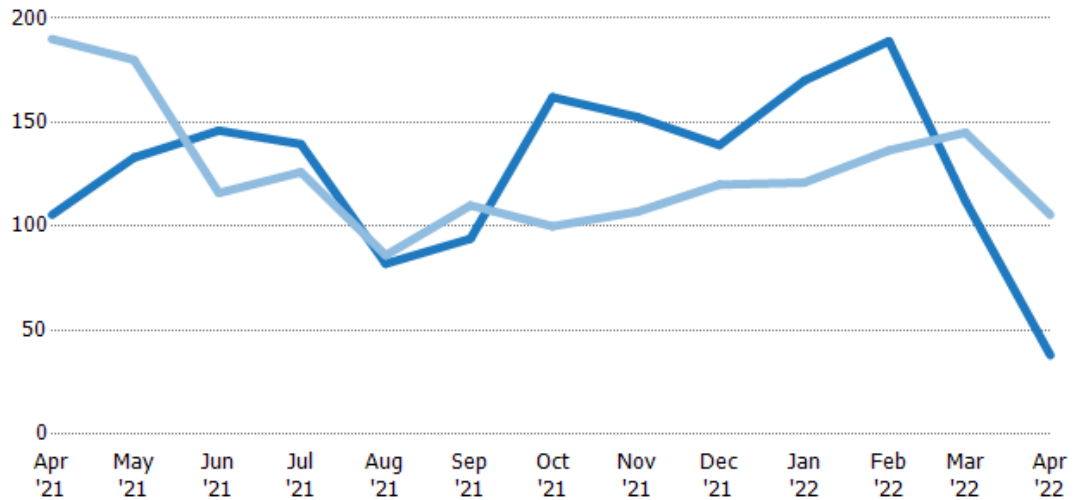
Median Days in RPR

The median number of days between when residential properties are first displayed as active listings in RPR and when accepted offers have been noted in RPR.

Filters Used

ZIP: Stowe, VT 05672
Property Type:
Condo/Townhouse/Apt., Single
Family

Month/ Year	Days	% Chg.
Apr '22	38	-64%
Apr '21	106	-44.5%
Apr '20	190	-26.8%



Current Year	106	133	146	140	82	94	162	153	139	170	189	112	38
Prior Year	190	180	116	126	86	110	100	107	120	121	137	145	106
Percent Change from Prior Year	-44%	-26%	26%	11%	-5%	-15%	62%	43%	16%	40%	38%	-23%	-64%

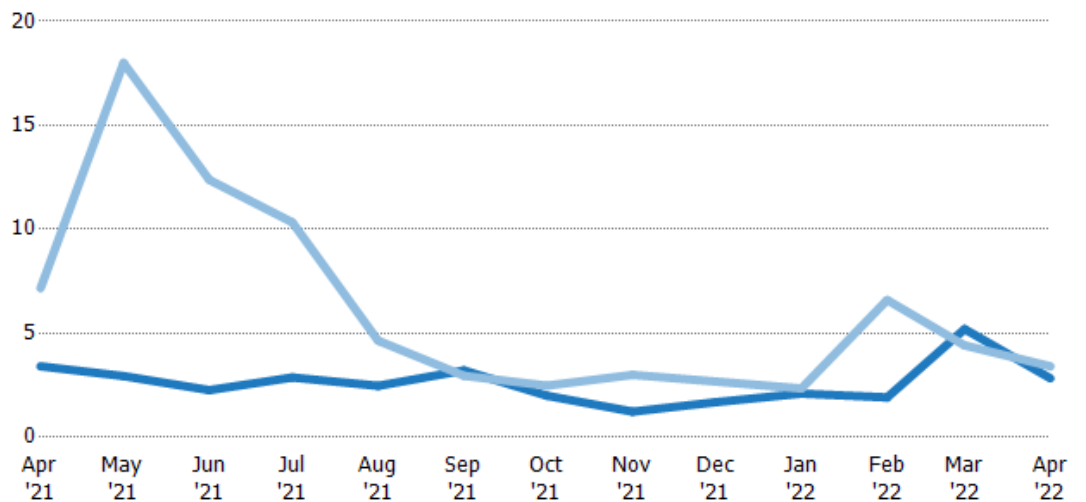
Months of Inventory

The number of months it would take to exhaust active listings at the current sales rate.

Filters Used

ZIP: Stowe, VT 05672
Property Type:
Condo/Townhouse/Apt., Single
Family

Month/ Year	Months	% Chg.
Apr '22	2.83	-17%
Apr '21	3.41	-52.4%
Apr '20	7.17	17.2%



Current Year	3.41	2.94	2.26	2.88	2.47	3.21	2	1.23	1.69	2.1	1.92	5.2	2.83
Prior Year	7.17	18	12.4	10.3	4.65	2.96	2.48	3	2.68	2.34	6.6	4.42	3.41
Percent Change from Prior Year	-52%	-84%	-82%	-72%	-47%	9%	-19%	-59%	-37%	-10%	-71%	18%	-17%

Absorption Rate

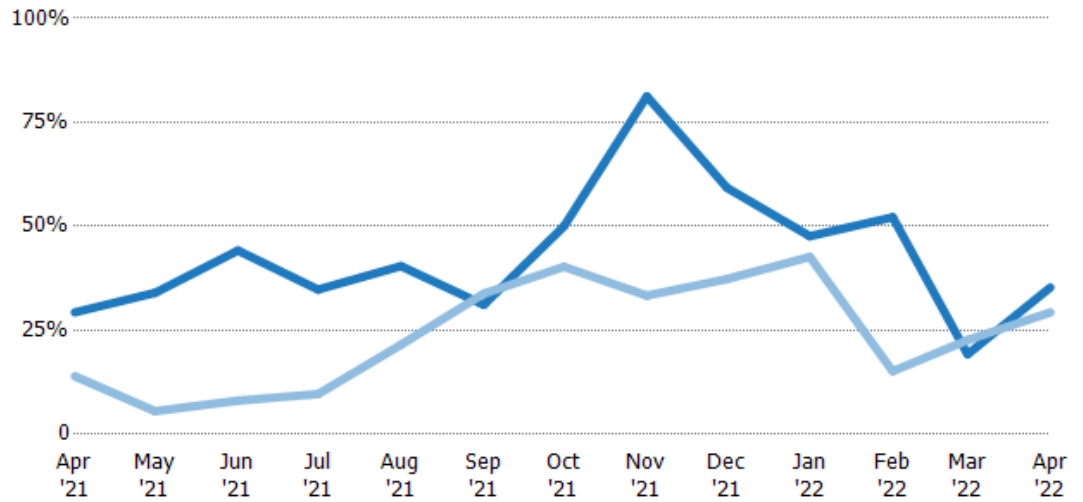
The percentage of inventory sold per month.

Filters Used

ZIP: Stowe, VT 05672

Property Type:
Condo/Townhouse/Apt., Single
Family

Month/ Year	Rate	Chg.
Apr '22	35%	-6%
Apr '21	29%	-15.4%
Apr '20	14%	-14.7%



Current Year	29%	34%	44%	35%	40%	31%	50%	81%	59%	48%	52%	19%	35%
Prior Year	14%	6%	8%	10%	22%	34%	40%	33%	37%	43%	15%	23%	29%
Change from Prior Year	-15%	-28%	-36%	-25%	-19%	3%	-10%	-48%	-22%	-5%	-37%	3%	-6%

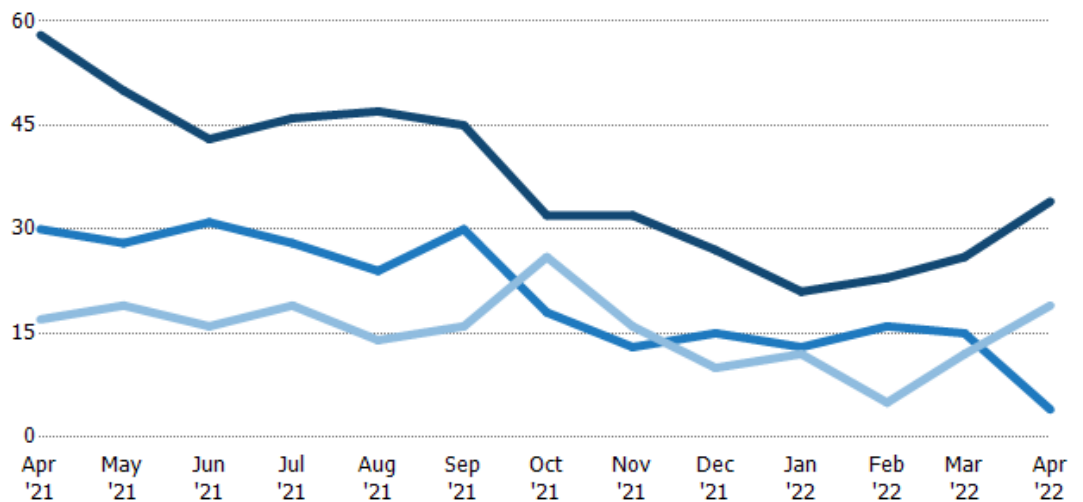
Active/Pending/Sold Units

The number of residential properties that were Active, Pending and Sold each month.

Filters Used

ZIP: Stowe, VT 05672

Property Type:
Condo/Townhouse/Apt., Single
Family



Active	58	50	43	46	47	45	32	32	27	21	23	26	34
Pending	30	28	31	28	24	30	18	13	15	13	16	15	4
Sold	17	19	16	19	14	16	26	16	10	12	5	12	19

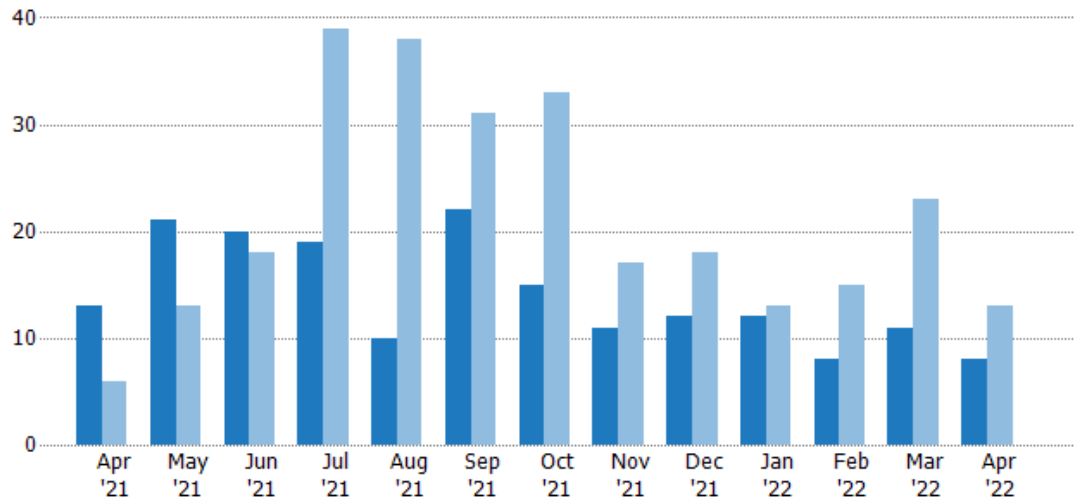
New Pending Sales

The number of residential properties with accepted offers that were added each month.

Filters Used

ZIP: Stowe, VT 05672
Property Type:
Condo/Townhouse/Apt., Single
Family

Month/ Year	Count	% Chg.
Apr '22	8	-38.5%
Apr '21	13	116.7%
Apr '20	6	50%



Current Year	13	21	20	19	10	22	15	11	12	12	8	11	8
Prior Year	6	13	18	39	38	31	33	17	18	13	15	23	13
Percent Change from Prior Year	117%	62%	11%	-51%	-74%	-29%	-55%	-35%	-33%	-8%	-47%	-52%	-38%

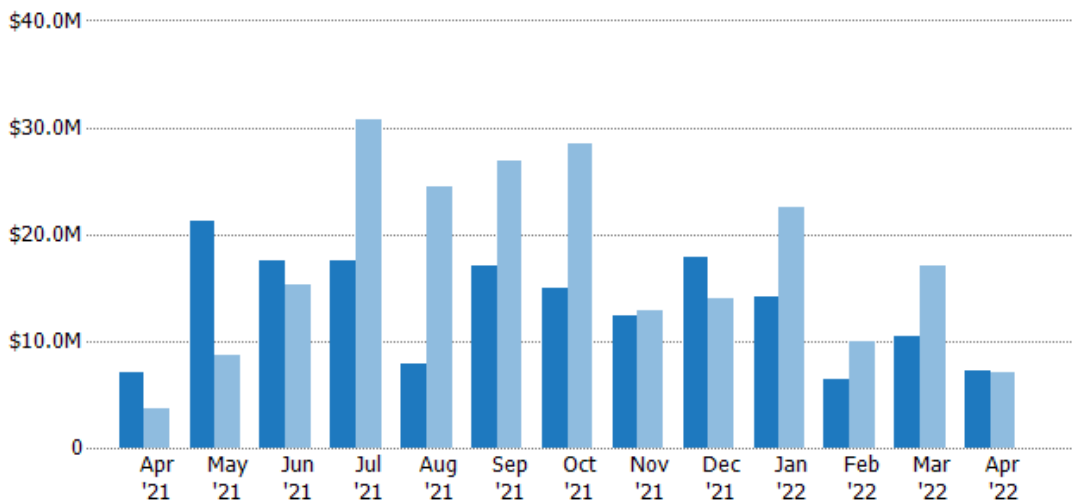
New Pending Sales Volume

The sum of the sales price of residential properties with accepted offers that were added each month.

Filters Used

ZIP: Stowe, VT 05672
Property Type:
Condo/Townhouse/Apt., Single
Family

Month/ Year	Volume	% Chg.
Apr '22	\$7.16M	2%
Apr '21	\$7.02M	94.7%
Apr '20	\$3.6M	-9.3%



Current Year	\$7.02M	\$21.3M	\$17.6M	\$17.5M	\$7.79M	\$17.1M	\$15M	\$12.4M	\$17.8M	\$14.2M	\$6.37M	\$10.5M	\$7.16M
Prior Year	\$3.6M	\$8.61M	\$15.3M	\$30.7M	\$24.4M	\$26.8M	\$28.5M	\$12.9M	\$13.9M	\$22.4M	\$9.94M	\$17M	\$7.02M
Percent Change from Prior Year	95%	147%	15%	-43%	-68%	-36%	-47%	-4%	28%	-37%	-36%	-38%	2%

Pending Sales

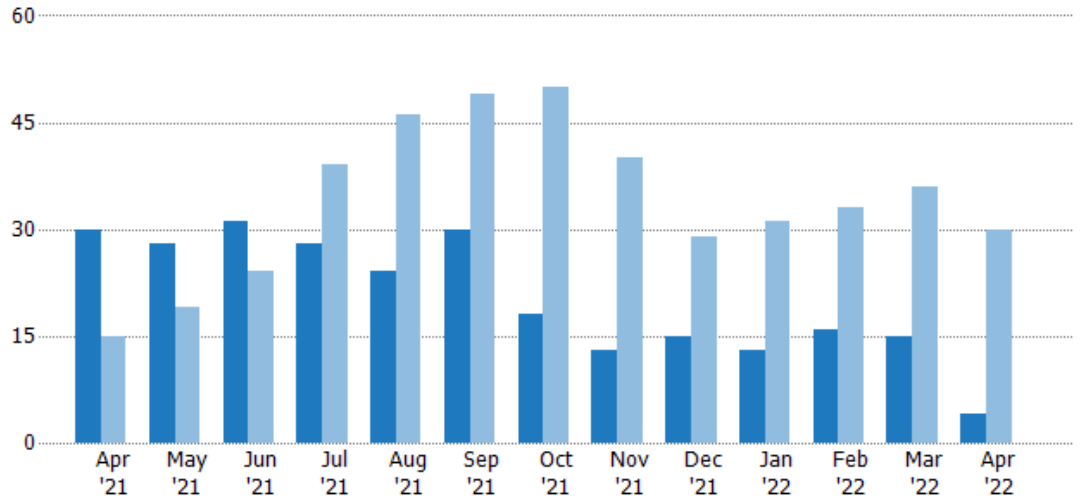
The number of residential properties with accepted offers that were available at the end each month.

Filters Used

ZIP: Stowe, VT 05672

Property Type:
Condo/Townhouse/Apt., Single
Family

Month/ Year	Count	% Chg.
Apr '22	4	-86.7%
Apr '21	30	100%
Apr '20	15	13.3%



Current Year	30	28	31	28	24	30	18	13	15	13	16	15	4
Prior Year	15	19	24	39	46	49	50	40	29	31	33	36	30
Percent Change from Prior Year	100%	47%	29%	-28%	-48%	-39%	-64%	-68%	-48%	-58%	-52%	-58%	-87%

Pending Sales Volume

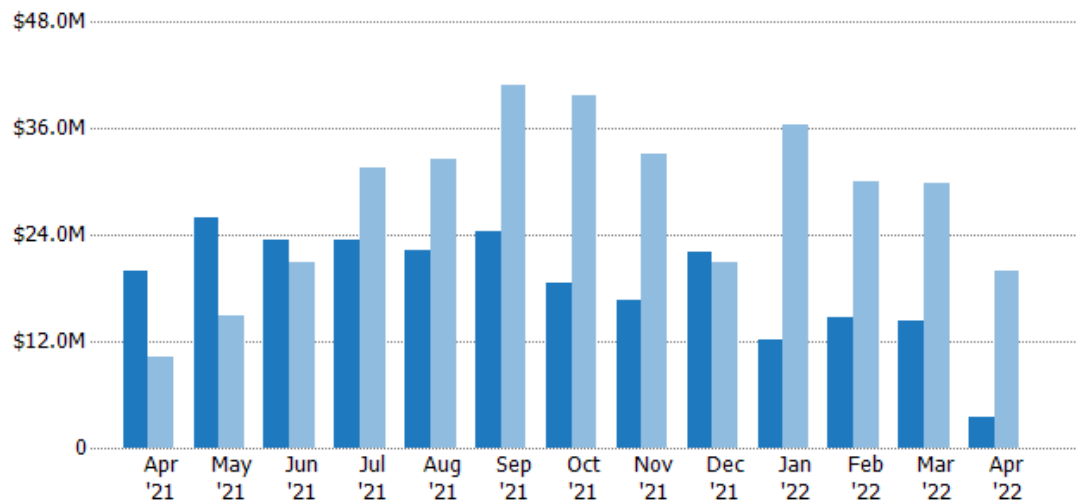
The sum of the sales price of residential properties with accepted offers that were available at the end of each month.

Filters Used

ZIP: Stowe, VT 05672

Property Type:
Condo/Townhouse/Apt., Single
Family

Month/ Year	Volume	% Chg.
Apr '22	\$3.49M	-82.5%
Apr '21	\$19.9M	94.1%
Apr '20	\$10.3M	3.3%



Current Year	\$19.9M	\$26.1M	\$23.5M	\$23.5M	\$22.2M	\$24.4M	\$18.6M	\$16.6M	\$22M	\$12.2M	\$14.8M	\$14.3M	\$3.49M
Prior Year	\$10.3M	\$15M	\$20.8M	\$31.5M	\$32.6M	\$40.9M	\$39.7M	\$33.2M	\$20.8M	\$36.4M	\$30.1M	\$29.9M	\$19.9M
Percent Change from Prior Year	94%	74%	13%	-25%	-32%	-40%	-53%	-50%	6%	-66%	-51%	-52%	-82%

Closed Sales

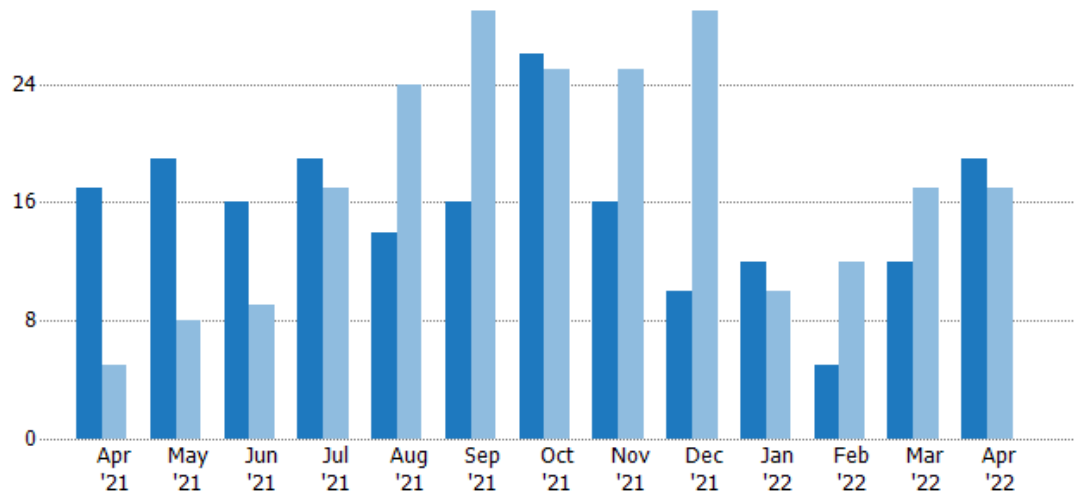
The total number of residential properties sold each month.

Filters Used

ZIP: Stowe, VT 05672

Property Type:
Condo/Townhouse/Apt., Single
Family

Month/ Year	Count	% Chg.
Apr '22	19	11.8%
Apr '21	17	240%
Apr '20	5	100%



Current Year	17	19	16	19	14	16	26	16	10	12	5	12	19
Prior Year	5	8	9	17	24	29	25	25	29	10	12	17	17
Percent Change from Prior Year	240%	138%	78%	12%	-42%	-45%	4%	-36%	-66%	20%	-58%	-29%	12%

Closed Sales Volume

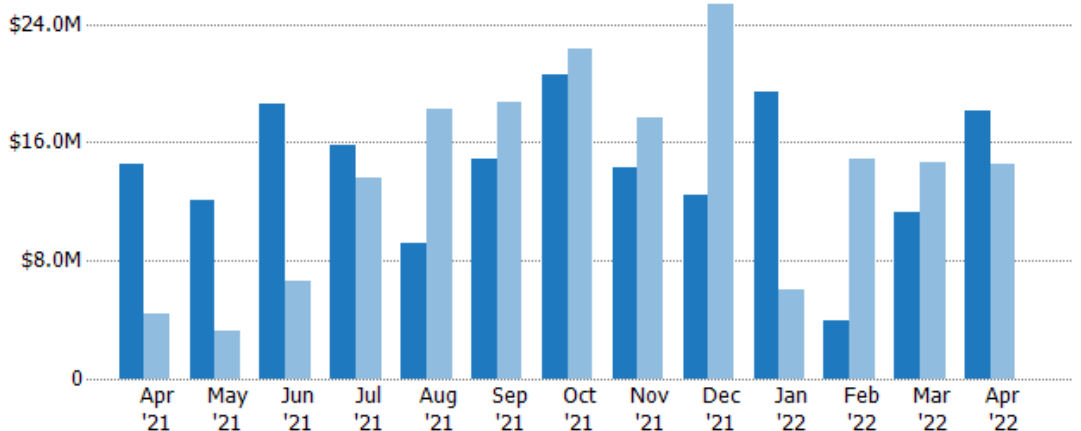
The sum of the sales price of residential properties sold each month.

Filters Used

ZIP: Stowe, VT 05672

Property Type:
Condo/Townhouse/Apt., Single
Family

Month/ Year	Volume	% Chg.
Apr '22	\$18.1M	24.9%
Apr '21	\$14.5M	231.3%
Apr '20	\$4.38M	-21.3%



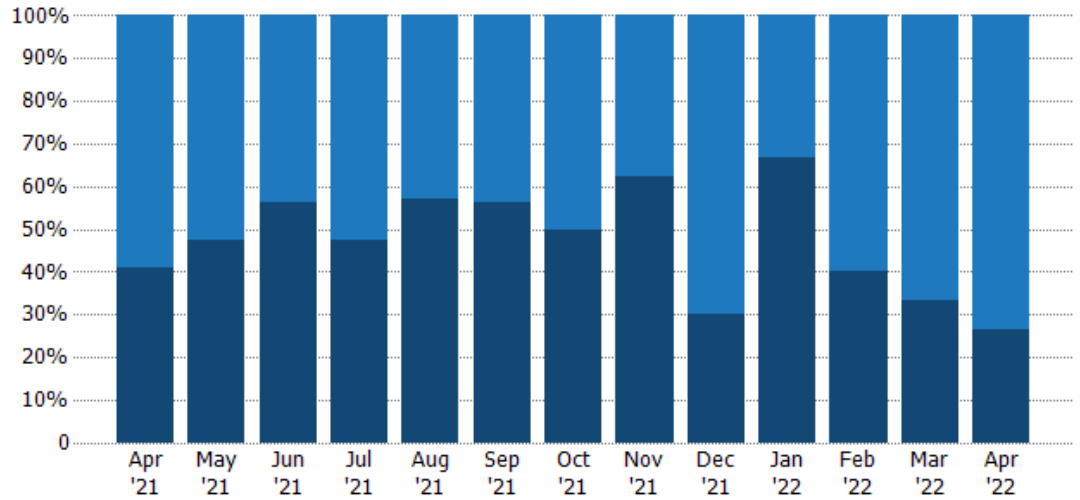
Current Year	\$14.5M	\$12.1M	\$18.6M	\$15.8M	\$9.18M	\$14.9M	\$20.5M	\$14.3M	\$12.5M	\$19.4M	\$3.99M	\$11.3M	\$18.1M
Prior Year	\$4.38M	\$3.29M	\$6.63M	\$13.6M	\$18.2M	\$18.7M	\$22.3M	\$17.7M	\$25.3M	\$6M	\$14.9M	\$14.7M	\$14.5M
Percent Change from Prior Year	231%	269%	181%	16%	-50%	-20%	-8%	-19%	-51%	223%	-73%	-23%	25%

Closed Sales by Property Type

The percentage of residential properties sold each month by property type.

Filters Used

ZIP: Stowe, VT 05672
Property Type:
Condo/Townhouse/Apt., Single
Family



Condo/Townhouse	59%	53%	44%	53%	43%	44%	50%	38%	70%	33%	60%	67%	74%
Single Family Residence	41%	47%	56%	47%	57%	56%	50%	63%	30%	67%	40%	33%	26%

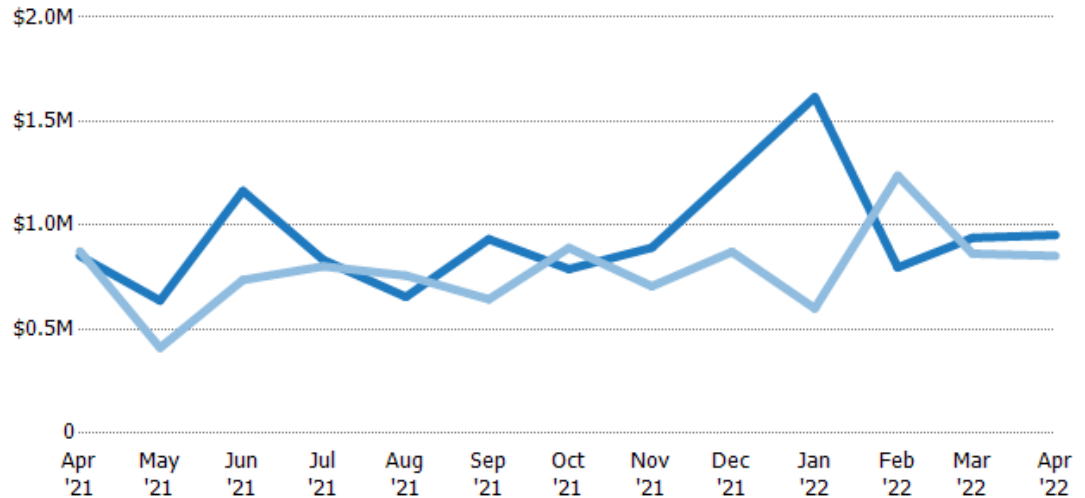
Average Sales Price

The average sales price of the residential properties sold each month.

Filters Used

ZIP: Stowe, VT 05672
Property Type:
Condo/Townhouse/Apt., Single
Family

Month/ Year	Price	% Chg.
Apr '22	\$953K	11.8%
Apr '21	\$853K	-2.6%
Apr '20	\$875K	-60.7%



Current Year	\$853K	\$638K	\$1.17M	\$834K	\$655K	\$933K	\$789K	\$892K	\$1.25M	\$1.62M	\$797K	\$939K	\$953K
Prior Year	\$875K	\$411K	\$737K	\$803K	\$758K	\$644K	\$891K	\$707K	\$872K	\$600K	\$1.24M	\$863K	\$853K
Percent Change from Prior Year	-3%	55%	58%	4%	-14%	45%	-11%	26%	43%	169%	-36%	9%	12%

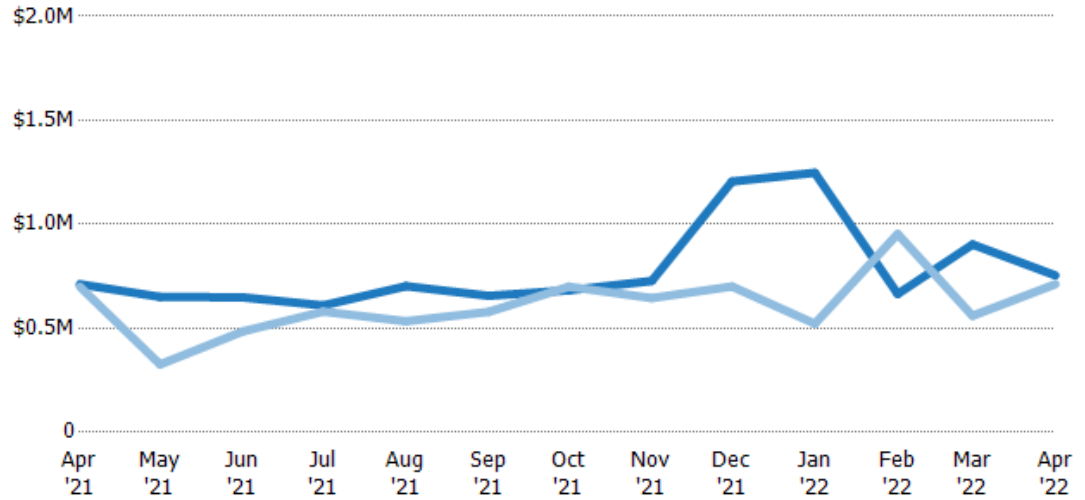
Median Sales Price

The median sales price of the residential properties sold each month.

Filters Used

ZIP: Stowe, VT 05672
Property Type:
Condo/Townhouse/Apt., Single
Family

Month/ Year	Price	% Chg.
Apr '22	\$754K	6%
Apr '21	\$712K	1.7%
Apr '20	\$700K	-57.9%



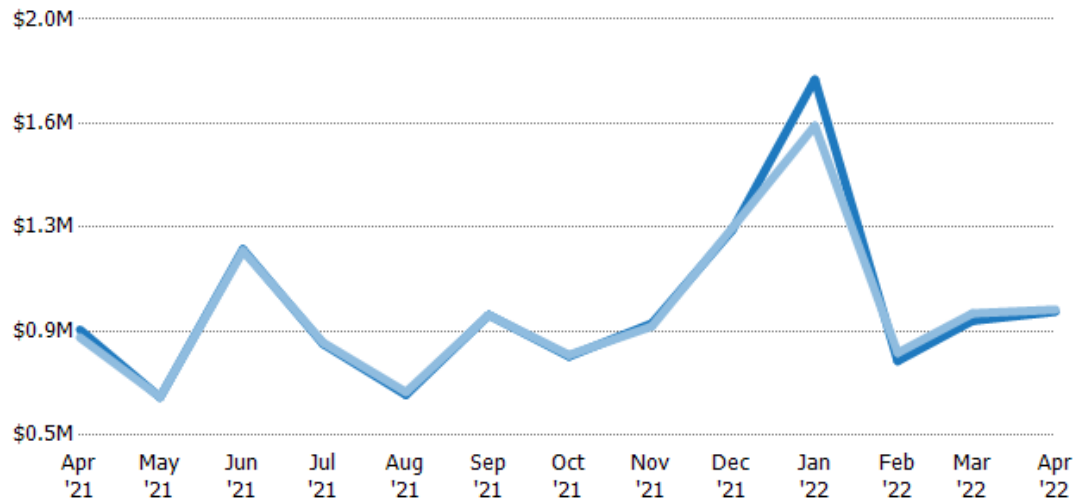
Current Year	\$712K	\$651K	\$649K	\$610K	\$703K	\$656K	\$683K	\$728K	\$1.21M	\$1.25M	\$665K	\$903K	\$754K
Prior Year	\$700K	\$326K	\$485K	\$580K	\$534K	\$579K	\$700K	\$645K	\$701K	\$522K	\$954K	\$560K	\$712K
Percent Change from Prior Year	2%	100%	34%	5%	32%	13%	-3%	13%	72%	139%	-30%	61%	6%

Average Sales Price vs Average Listing Price

The average sales price as a percentage of the average listing price for properties sold each month.

Filters Used

ZIP: Stowe, VT 05672
Property Type:
Condo/Townhouse/Apt., Single
Family



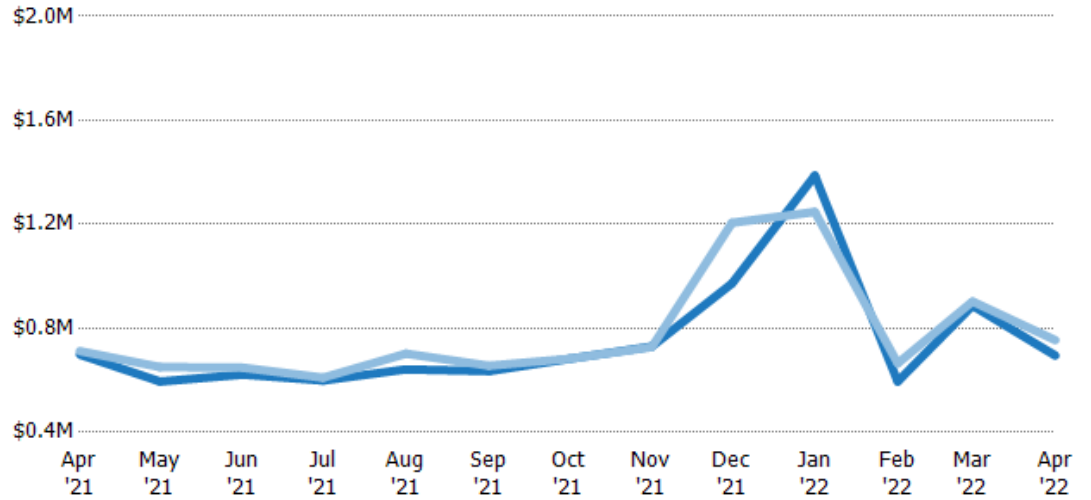
Avg List Price	\$881K	\$637K	\$1.17M	\$829K	\$646K	\$934K	\$785K	\$903K	\$1.24M	\$1.78M	\$768K	\$913K	\$945K
Avg Sales Price	\$853K	\$638K	\$1.17M	\$834K	\$655K	\$933K	\$789K	\$892K	\$1.25M	\$1.62M	\$797K	\$939K	\$953K
Avg Sales Price as a % of Avg List Price	97%	100%	100%	101%	101%	100%	101%	99%	101%	91%	104%	103%	101%

Median Sales Price vs Median Listing Price

The median sales price as a percentage of the median listing price for properties sold each month.

Filters Used

ZIP: Stowe, VT 05672
Property Type:
Condo/Townhouse/Apt., Single
Family



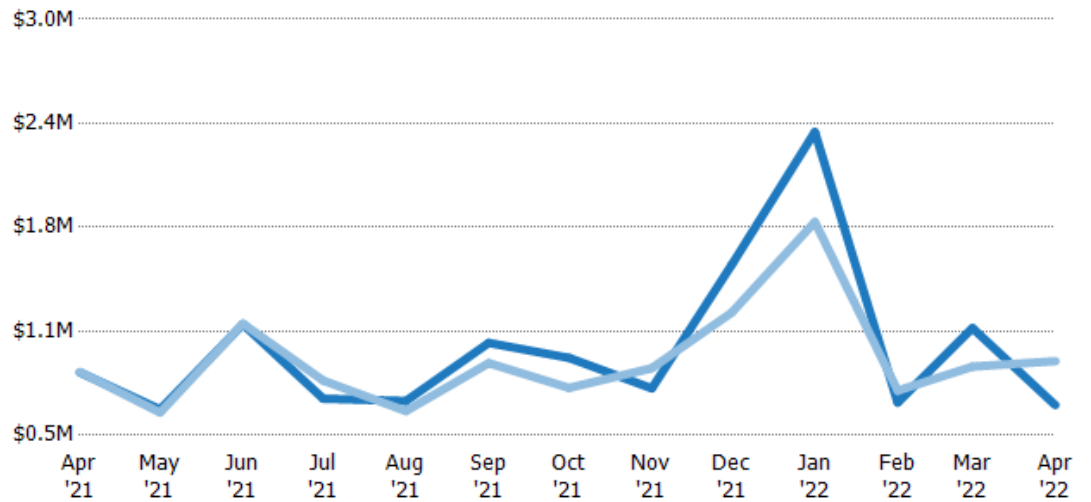
Median List Price	\$699K	\$595K	\$622K	\$599K	\$642K	\$635K	\$682K	\$730K	\$973K	\$1.39M	\$595K	\$887K	\$695K
Median Sales Price	\$712K	\$651K	\$649K	\$610K	\$703K	\$656K	\$683K	\$728K	\$1.21M	\$1.25M	\$665K	\$903K	\$754K
Med Sales Price as a % of Med List Price	102%	109%	104%	102%	109%	103%	100%	100%	124%	90%	112%	102%	109%

Average Sales Price vs Average Est Value

The average sales price as a percentage of the average AVM or RVM® valuation estimate for properties sold each month.

Filters Used

ZIP: Stowe, VT 05672
Property Type:
Condo/Townhouse/Apt., Single
Family



Avg Est Value	\$878K	\$655K	\$1.17M	\$720K	\$706K	\$1.06M	\$965K	\$782K	\$1.53M	\$2.32M	\$697K	\$1.14M	\$681K
Avg Sales Price	\$881K	\$637K	\$1.17M	\$829K	\$646K	\$934K	\$785K	\$903K	\$1.24M	\$1.78M	\$768K	\$913K	\$945K
Avg Sales Price as a % of Avg Est Value	100%	97%	100%	115%	91%	88%	81%	116%	81%	77%	110%	80%	139%

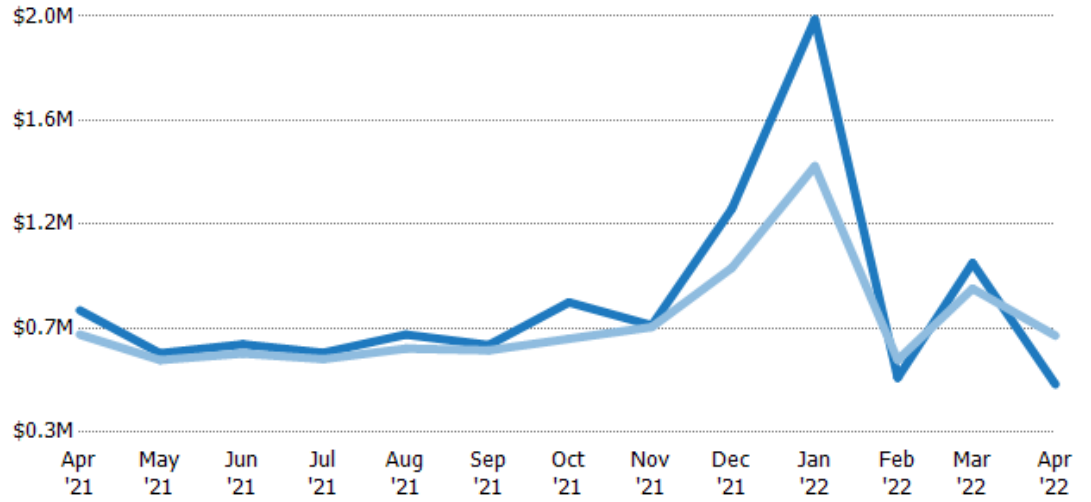
Median Sales Price vs Median Est Value

The median sales price as a percent of the median AVM or RVM® valuation estimate for properties sold each month.

Filters Used

ZIP: Stowe, VT 05672

Property Type:
Condo/Townhouse/Apt., Single
Family



Median Est Value	\$798K	\$623K	\$659K	\$625K	\$699K	\$657K	\$831K	\$737K	\$1.21M	\$1.99M	\$523K	\$992K	\$496K
Median Sales Price	\$699K	\$595K	\$622K	\$599K	\$642K	\$635K	\$682K	\$730K	\$973K	\$1.39M	\$595K	\$887K	\$695K
Med Sales Price as a % of Med Est Value	88%	96%	94%	96%	92%	97%	82%	99%	80%	70%	114%	89%	140%