

Summary of Key Listing and Sales Metrics

A summary of the key metrics selected to be included in the report. MLS sources where licensed.

Key Metrics	Apr 2022	Apr 2021	+ / -	YTD 2022	YTD 2021	+ / -
Listing Activity Charts Metrics						
New Listing Count	35	41	-14.6%	164	171	-4.1%
New Listing Volume	\$21,962,800	\$17,025,900	+29%	\$85,617,918	\$66,059,448	+29.6%
Active Listing Count	111	137	-19%	N/A	N/A	
Active Listing Volume	\$65,001,000	\$75,943,899	-14.4%	N/A	N/A	
Average Listing Price	\$585,595	\$554,335	+5.6%	\$595,260	\$541,522	+9.9%
Median Listing Price	\$350,000	\$299,900	+16.7%	\$380,606	\$306,674	+24.1%
Median Days in RPR	50	149	-66.4%	80.24	151.9	-47.2%
Months of Inventory	2.6	3.3	-19%	1.9	5.9	-66.9%
Absorption Rate	37.84%	30.66%	+7.2%	51.62%	17.09%	+34.5%
Sales Activity Charts Metrics						
New Pending Sales Count	3	47	-93.6%	101	221	-54.3%
New Pending Sales Volume	\$1,659,000	\$16,571,900	-90%	\$49,990,918	\$80,069,299	-37.6%
Pending Sales Count	14	86	-83.7%	N/A	N/A	
Pending Sales Volume	\$6,835,800	\$32,211,000	-78.8%	N/A	N/A	
Closed Sales Count	44	59	-25.4%	145	175	-17.1%
Closed Sales Volume	\$22,401,500	\$21,940,572	+2.1%	\$68,610,923	\$63,287,471	+8.4%
Average Sales Price	\$509,125	\$371,874	+36.9%	\$473,179	\$361,643	+30.8%
Median Sales Price	\$357,500	\$260,000	+37.5%	\$333,469	\$261,286	+27.6%

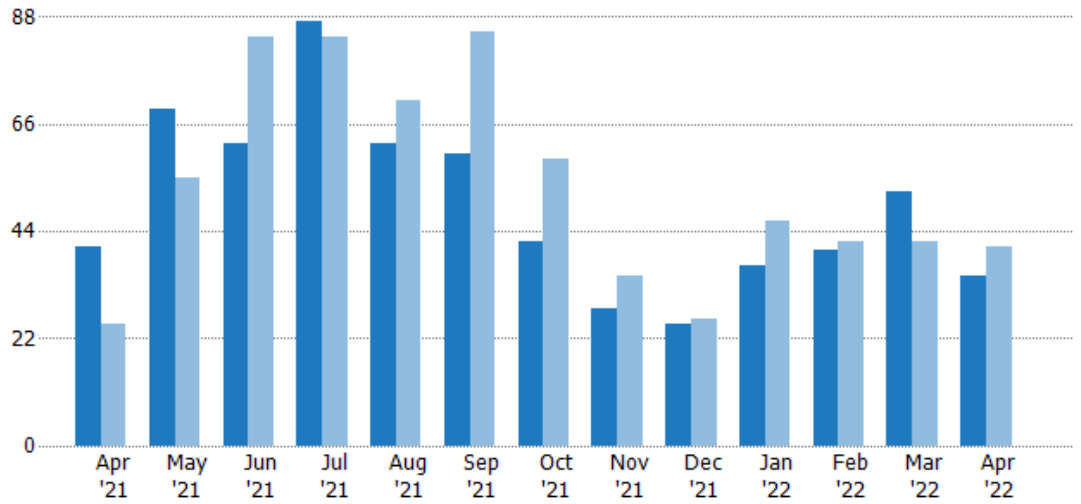
New Listings

The number of new residential listings that were added each month.

Filters Used

State: VT
County: Bennington County, Vermont
Property Type: Condo/Townhouse/Apt., Single Family

Month/Year	Count	% Chg.
Apr '22	35	-14.6%
Apr '21	41	64%
Apr '20	25	128%



Current Year	41	69	62	87	62	60	42	28	25	37	40	52	35
Prior Year	25	55	84	84	71	85	59	35	26	46	42	42	41
Percent Change from Prior Year	64%	25%	-26%	4%	-13%	-29%	-29%	-20%	-4%	-20%	-5%	24%	-15%

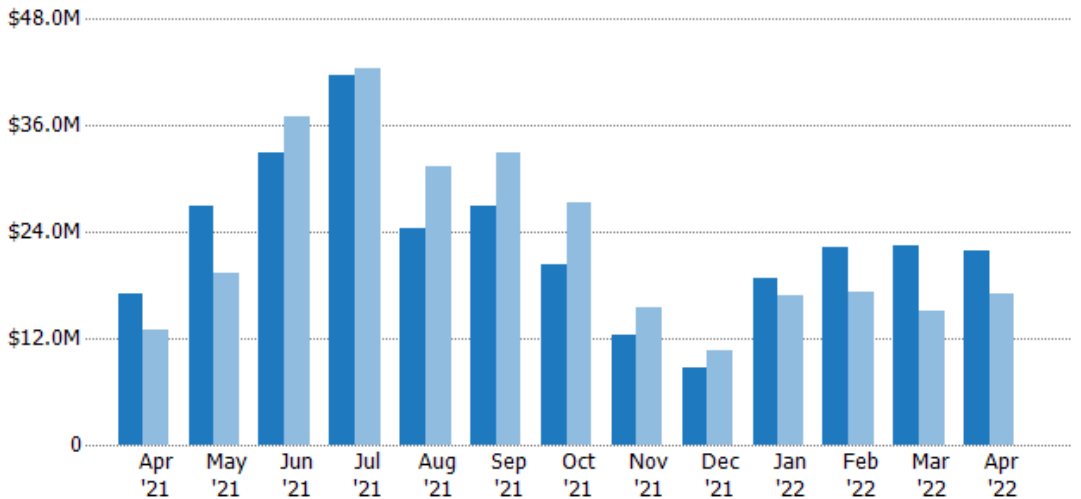
New Listing Volume

The sum of the listing price of residential listings that were added each month.

Filters Used

State: VT
County: Bennington County, Vermont
Property Type: Condo/Townhouse/Apt., Single Family

Month/Year	Volume	% Chg.
Apr '22	\$22M	29%
Apr '21	\$17M	31.5%
Apr '20	\$13M	58.6%



Current Year	\$17M	\$27M	\$32.9M	\$41.7M	\$24.4M	\$27M	\$20.4M	\$12.4M	\$8.77M	\$18.8M	\$22.3M	\$22.5M	\$22M
Prior Year	\$13M	\$19.4M	\$37.1M	\$42.5M	\$31.3M	\$32.9M	\$27.4M	\$15.5M	\$10.6M	\$16.8M	\$17.2M	\$15.1M	\$17M
Percent Change from Prior Year	31%	39%	-11%	-2%	-22%	-18%	-25%	-20%	-17%	12%	30%	49%	29%

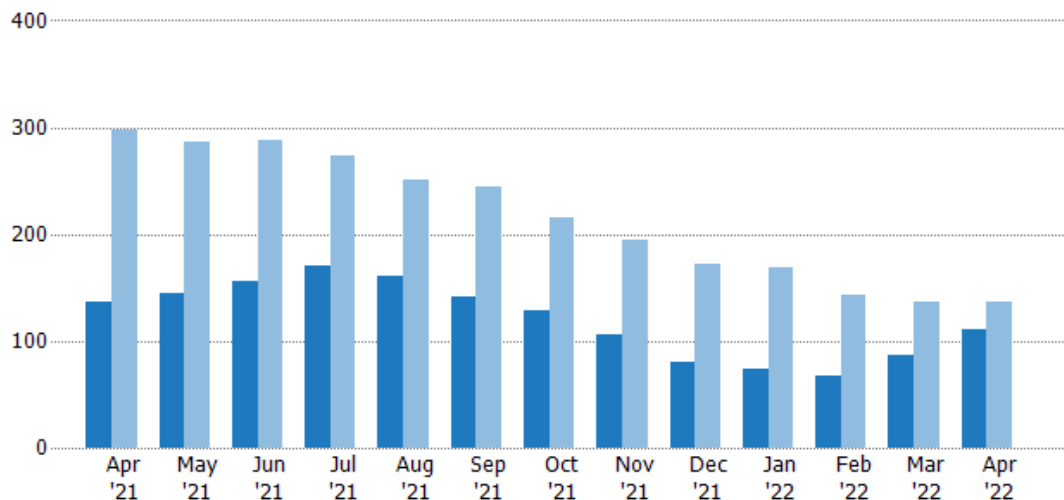
Active Listings

The number of active residential listings at the end of each month.

Filters Used

State: VT
County: Bennington County, Vermont
Property Type: Condo/Townhouse/Apt., Single Family

Month/Year	Count	% Chg.
Apr '22	111	-19%
Apr '21	137	-53.9%
Apr '20	297	14.5%



Current Year	137	145	156	170	161	142	129	106	80	74	68	86	111
Prior Year	297	287	288	273	251	245	215	195	172	169	143	136	137
Percent Change from Prior Year	-54%	-49%	-46%	-38%	-36%	-42%	-40%	-46%	-53%	-56%	-52%	-37%	-19%

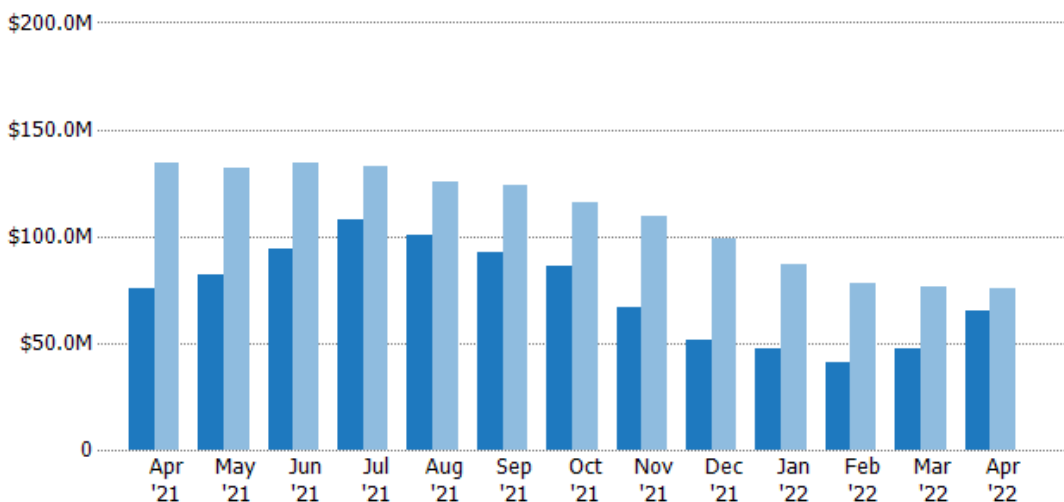
Active Listing Volume

The sum of the listing price of active residential listings at the end of each month.

Filters Used

State: VT
County: Bennington County, Vermont
Property Type: Condo/Townhouse/Apt., Single Family

Month/Year	Volume	% Chg.
Apr '22	\$65M	-14.4%
Apr '21	\$75.9M	-43.6%
Apr '20	\$135M	-1.3%



Current Year	\$75.9M	\$82.3M	\$94.1M	\$108M	\$100M	\$92.7M	\$85.9M	\$66.7M	\$51.2M	\$47.7M	\$41.3M	\$47.8M	\$65M
Prior Year	\$135M	\$132M	\$135M	\$133M	\$125M	\$124M	\$116M	\$110M	\$99.1M	\$86.9M	\$77.7M	\$76.2M	\$75.9M
Percent Change from Prior Year	-44%	-38%	-30%	-19%	-20%	-25%	-26%	-39%	-48%	-45%	-47%	-37%	-14%

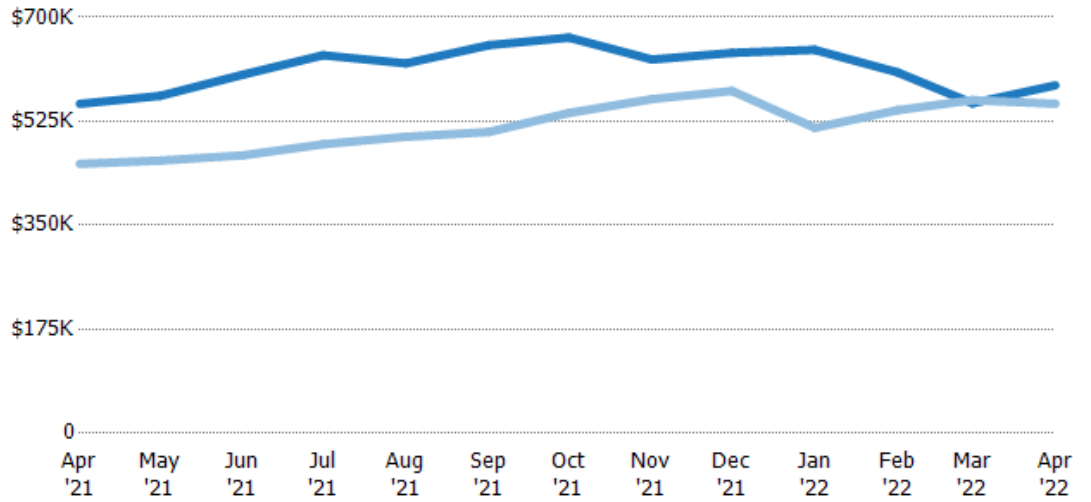
Average Listing Price

The average listing price of active residential listings at the end of each month.

Filters Used

State: VT
County: Bennington County, Vermont
Property Type: Condo/Townhouse/Apt., Single Family

Month/Year	Price	% Chg.
Apr '22	\$586K	5.6%
Apr '21	\$554K	22.3%
Apr '20	\$453K	-13.8%



Current Year	\$554K	\$568K	\$603K	\$636K	\$622K	\$653K	\$666K	\$629K	\$640K	\$645K	\$607K	\$555K	\$586K
Prior Year	\$453K	\$459K	\$468K	\$486K	\$499K	\$507K	\$539K	\$562K	\$576K	\$514K	\$544K	\$561K	\$554K
Percent Change from Prior Year	22%	24%	29%	31%	25%	29%	24%	12%	11%	26%	12%	-1%	6%

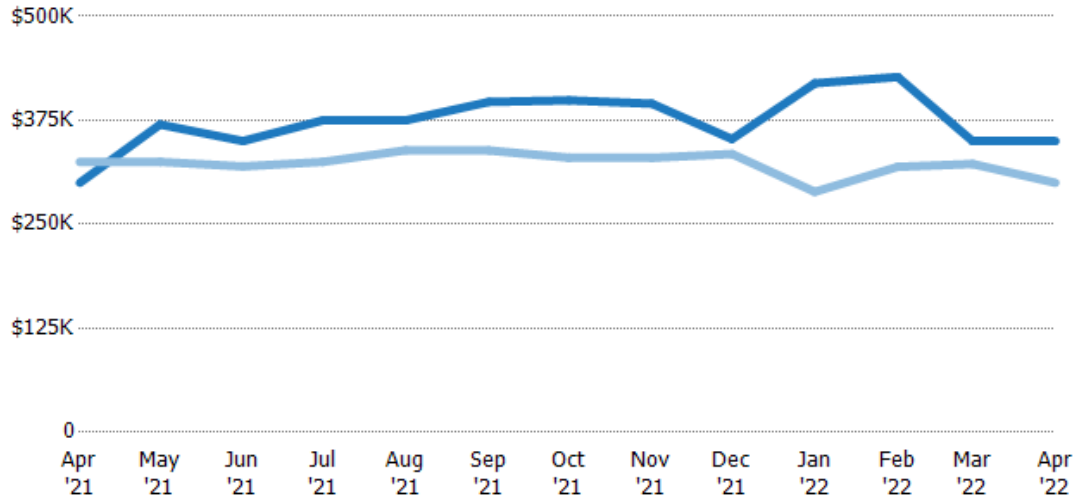
Median Listing Price

The median listing price of active residential listings at the end of each month.

Filters Used

State: VT
County: Bennington County, Vermont
Property Type: Condo/Townhouse/Apt., Single Family

Month/Year	Price	% Chg.
Apr '22	\$350K	16.7%
Apr '21	\$300K	-7.7%
Apr '20	\$325K	-11.1%



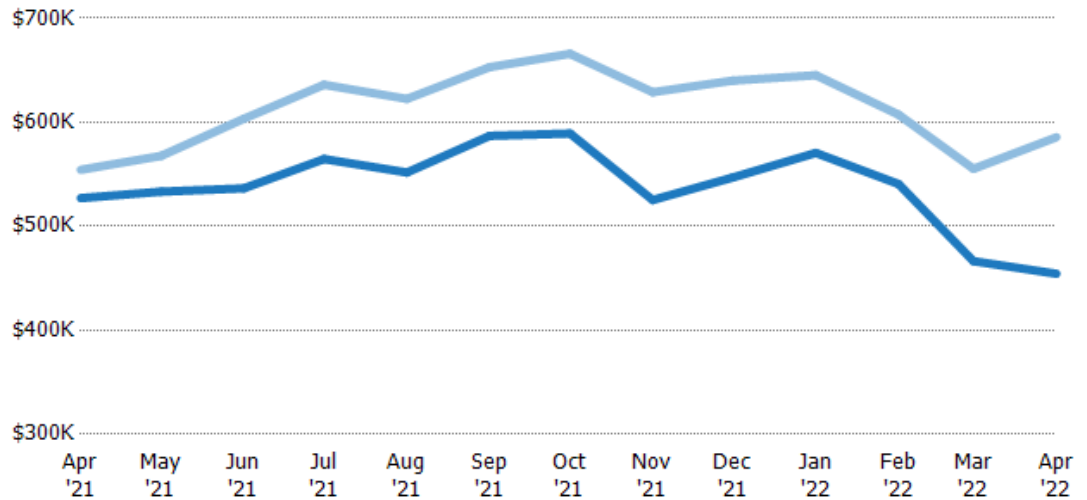
Current Year	\$300K	\$370K	\$350K	\$375K	\$375K	\$397K	\$399K	\$395K	\$352K	\$419K	\$427K	\$350K	\$350K
Prior Year	\$325K	\$325K	\$320K	\$325K	\$339K	\$339K	\$330K	\$330K	\$335K	\$289K	\$319K	\$323K	\$300K
Percent Change from Prior Year	-8%	14%	10%	15%	11%	17%	21%	20%	5%	45%	34%	9%	17%

Average Listing Price vs Average Est Value

The average listing price as a percentage of the average AVM or RVM® valuation estimate for active listings each month.

Filters Used

State: VT
County: Bennington County,
Vermont
Property Type:
Condo/Townhouse/Apt., Single
Family

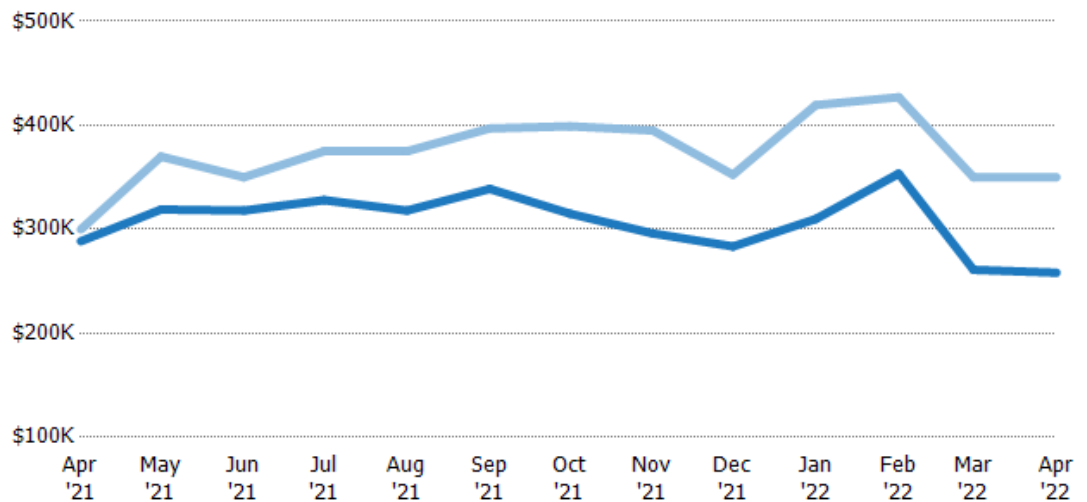


Median Listing Price vs Median Est Value

The median listing price as a percentage of the median AVM or RVM® valuation estimate for active listings each month.

Filters Used

State: VT
County: Bennington County,
Vermont
Property Type:
Condo/Townhouse/Apt., Single
Family



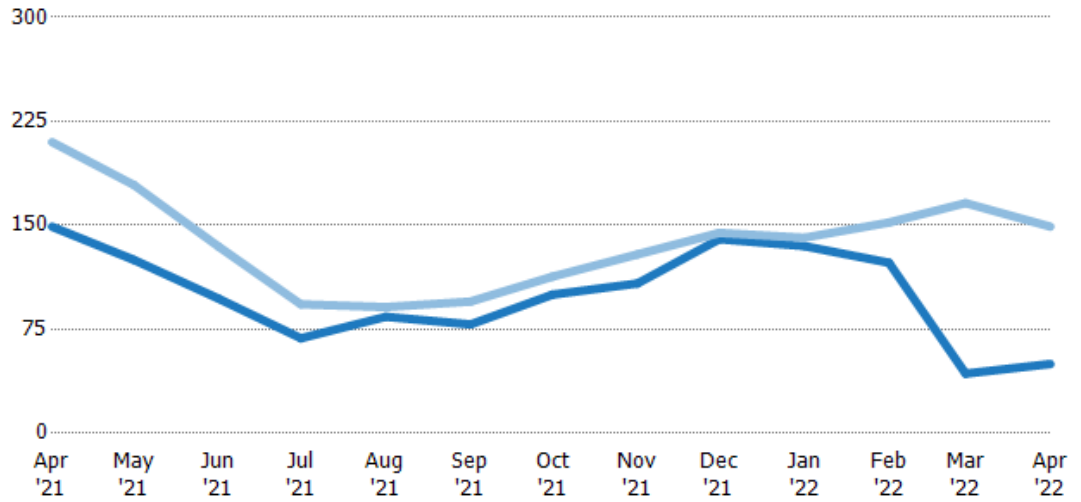
Median Days in RPR

The median number of days between when residential properties are first displayed as active listings in RPR and when accepted offers have been noted in RPR.

Filters Used

State: VT
County: Bennington County, Vermont
Property Type: Condo/Townhouse/Apt., Single Family

Month/Year	Days	% Chg.
Apr '22	50	-66.4%
Apr '21	149	-29%
Apr '20	210	0%



Current Year	149	125	97	68.5	84	78.5	100	108	140	135	123	43	50
Prior Year	210	179	135	93	91	95	113	129	145	141	152	166	149
Percent Change from Prior Year	-29%	-30%	-28%	-26%	-8%	-17%	-12%	-16%	-3%	-4%	-19%	-74%	-66%

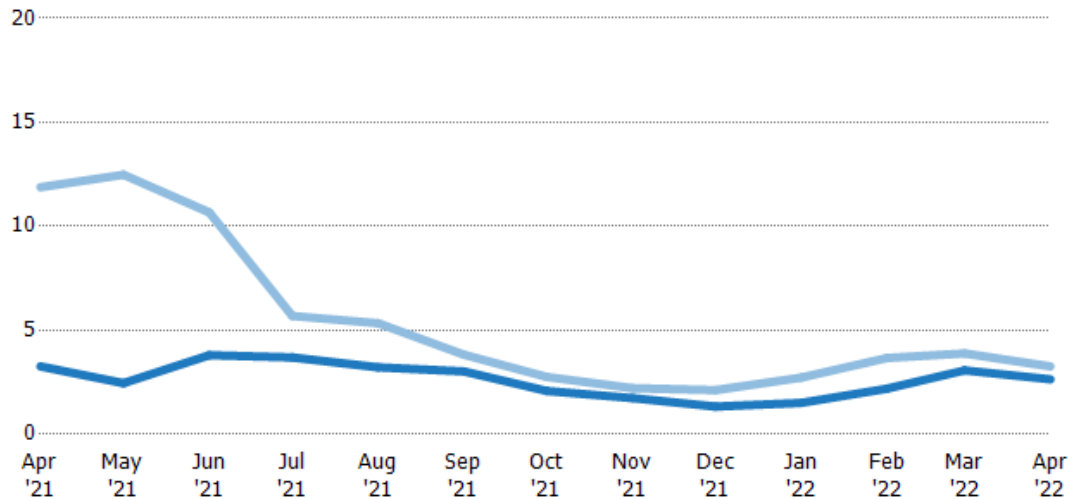
Months of Inventory

The number of months it would take to exhaust active listings at the current sales rate.

Filters Used

State: VT
County: Bennington County, Vermont
Property Type: Condo/Townhouse/Apt., Single Family

Month/Year	Months	% Chg.
Apr '22	2.64	-19%
Apr '21	3.26	-72.5%
Apr '20	11.9	-13.3%



Current Year	3.26	2.46	3.8	3.7	3.22	3.02	2.08	1.74	1.33	1.51	2.19	3.07	2.64
Prior Year	11.9	12.5	10.7	5.69	5.34	3.83	2.76	2.22	2.12	2.73	3.67	3.89	3.26
Percent Change from Prior Year	-73%	-80%	-64%	-35%	-40%	-21%	-25%	-22%	-37%	-45%	-40%	-21%	-19%

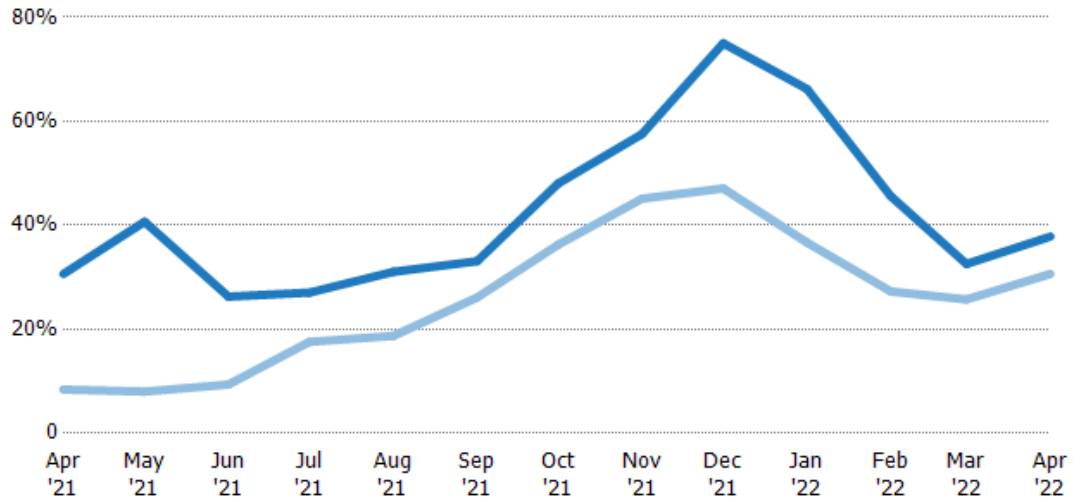
Absorption Rate

The percentage of inventory sold per month.

Filters Used

State: VT
County: Bennington County,
Vermont
Property Type:
Condo/Townhouse/Apt., Single
Family

Month/ Year	Rate	Chg.
Apr '22	38%	-7.2%
Apr '21	31%	-22.2%
Apr '20	8%	15.3%



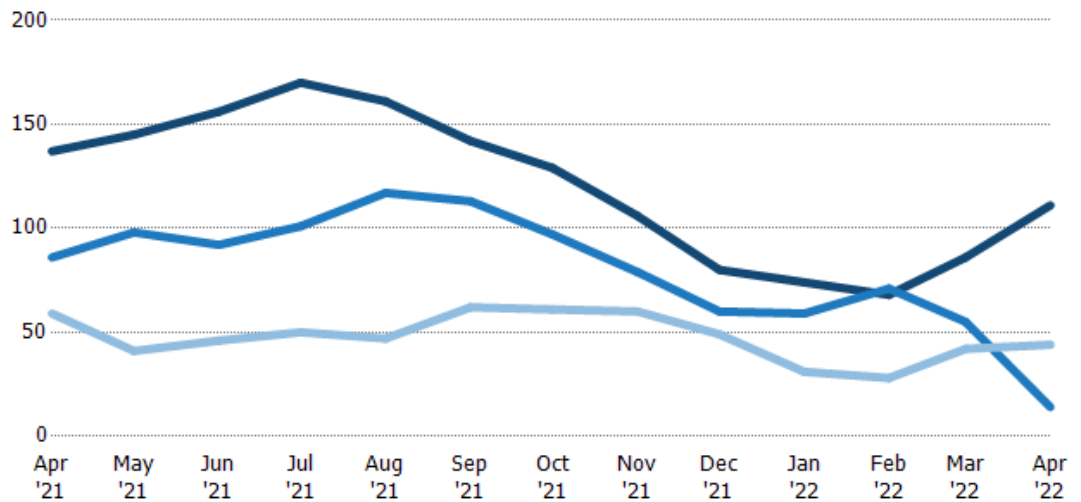
Current Year	31%	41%	26%	27%	31%	33%	48%	58%	75%	66%	46%	33%	38%
Prior Year	8%	8%	9%	18%	19%	26%	36%	45%	47%	37%	27%	26%	31%
Change from Prior Year	-22%	-33%	-17%	-9%	-12%	-7%	-12%	-12%	-28%	-30%	-18%	-7%	-7%

Active/Pending/Sold Units

The number of residential properties that were Active, Pending and Sold each month.

Filters Used

State: VT
County: Bennington County,
Vermont
Property Type:
Condo/Townhouse/Apt., Single
Family



Active	137	145	156	170	161	142	129	106	80	74	68	86	111
Pending	86	98	92	101	117	113	97	79	60	59	71	55	14
Sold	59	41	46	50	47	62	61	60	49	31	28	42	44

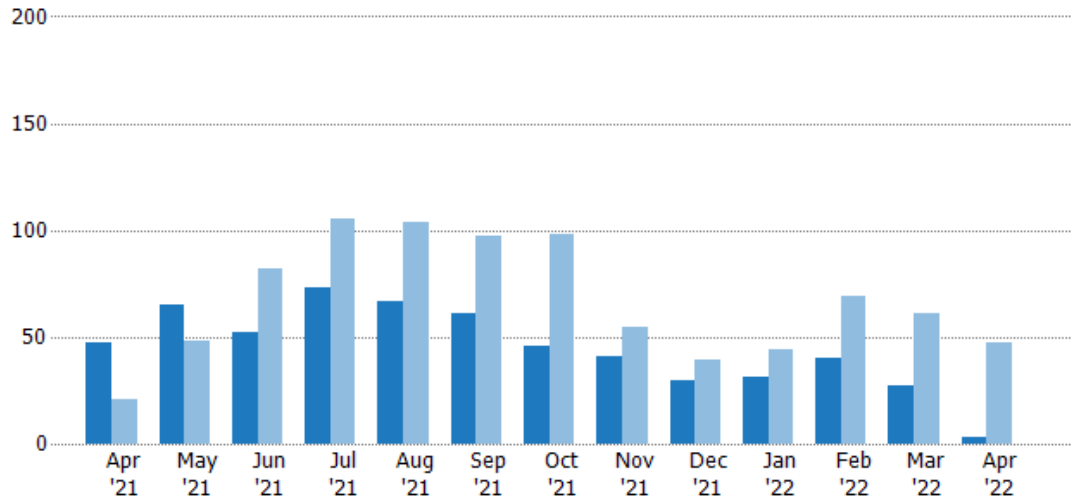
New Pending Sales

The number of residential properties with accepted offers that were added each month.

Filters Used

State: VT
County: Bennington County,
Vermont
Property Type:
Condo/Townhouse/Apt., Single
Family

Month/ Year	Count	% Chg.
Apr '22	3	-93.6%
Apr '21	47	123.8%
Apr '20	21	81%



Current Year	47	65	52	73	67	61	46	41	30	31	40	27	3
Prior Year	21	48	82	105	104	97	98	55	39	44	69	61	47
Percent Change from Prior Year	124%	35%	-37%	-30%	-36%	-37%	-53%	-25%	-23%	-30%	-42%	-56%	-94%

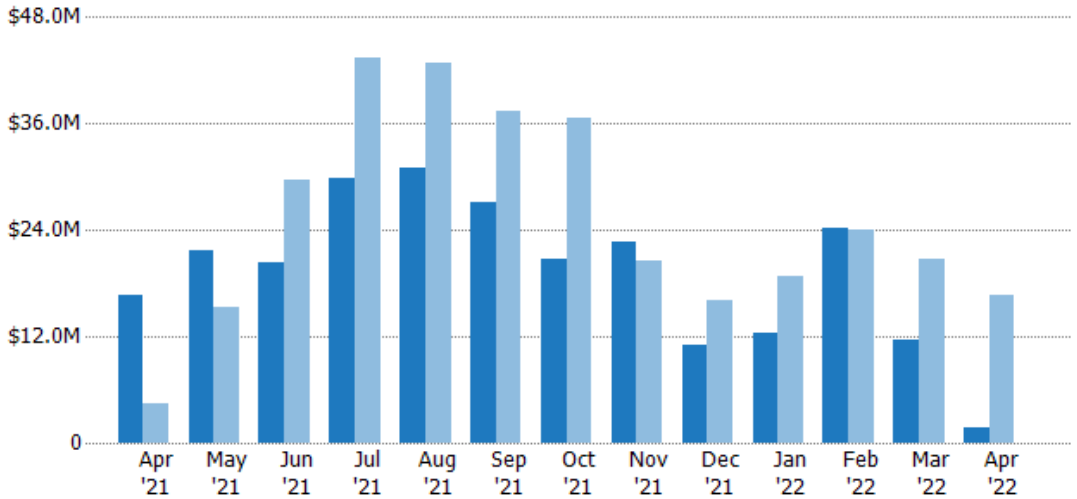
New Pending Sales Volume

The sum of the sales price of residential properties with accepted offers that were added each month.

Filters Used

State: VT
County: Bennington County,
Vermont
Property Type:
Condo/Townhouse/Apt., Single
Family

Month/ Year	Volume	% Chg.
Apr '22	\$1.66M	-90%
Apr '21	\$16.6M	269.5%
Apr '20	\$4.48M	164.8%



Current Year	\$16.6M	\$21.7M	\$20.4M	\$29.9M	\$31M	\$27.2M	\$20.7M	\$22.7M	\$11M	\$12.4M	\$24.2M	\$11.7M	\$1.66M
Prior Year	\$4.48M	\$15.4M	\$29.6M	\$43.4M	\$42.8M	\$37.5M	\$36.5M	\$20.5M	\$16M	\$18.8M	\$24M	\$20.6M	\$16.6M
Percent Change from Prior Year	270%	41%	-31%	-31%	-28%	-27%	-43%	11%	-32%	-34%	1%	-43%	-90%

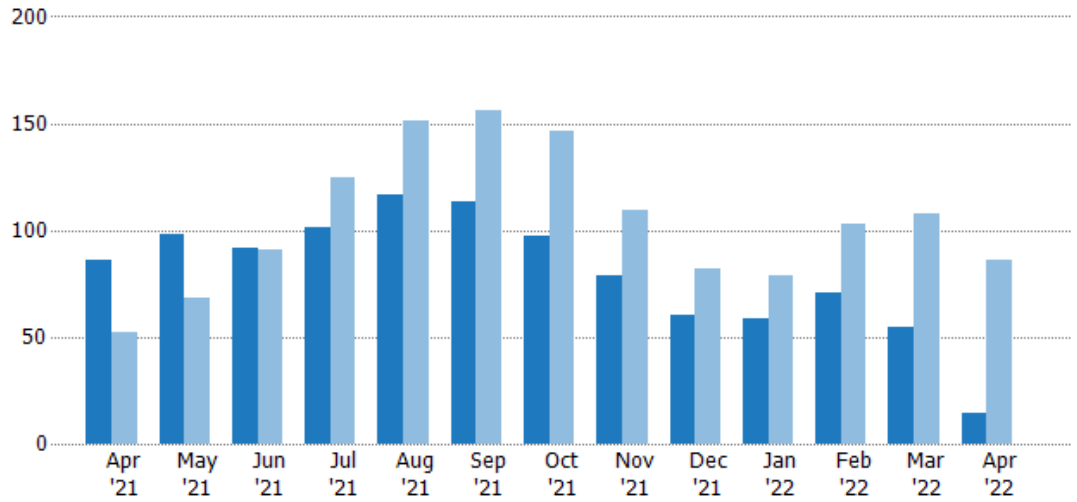
Pending Sales

The number of residential properties with accepted offers that were available at the end each month.

Filters Used

State: VT
County: Bennington County, Vermont
Property Type: Condo/Townhouse/Apt., Single Family

Month/Year	Count	% Chg.
Apr '22	14	-83.7%
Apr '21	86	65.4%
Apr '20	52	17.3%



Current Year	86	98	92	101	117	113	97	79	60	59	71	55	14
Prior Year	52	68	91	125	151	156	146	109	82	79	103	108	86
Percent Change from Prior Year	65%	44%	1%	-19%	-23%	-28%	-34%	-28%	-27%	-25%	-31%	-49%	-84%

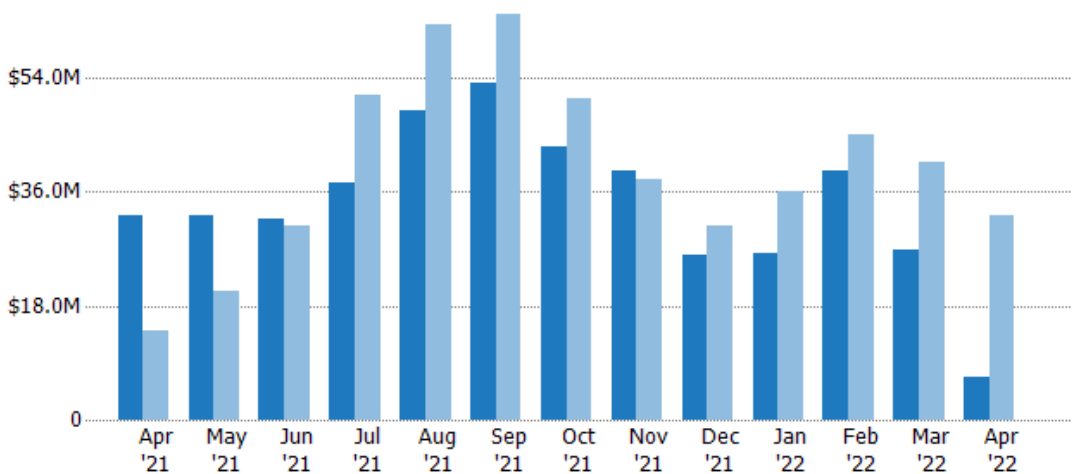
Pending Sales Volume

The sum of the sales price of residential properties with accepted offers that were available at the end of each month.

Filters Used

State: VT
County: Bennington County, Vermont
Property Type: Condo/Townhouse/Apt., Single Family

Month/Year	Volume	% Chg.
Apr '22	\$6.84M	-78.8%
Apr '21	\$32.2M	130.5%
Apr '20	\$14M	37.9%



Current Year	\$32.2M	\$32.3M	\$31.8M	\$37.4M	\$48.8M	\$53.2M	\$43.1M	\$39.4M	\$26.1M	\$26.2M	\$39.3M	\$26.7M	\$6.84M
Prior Year	\$14M	\$20.3M	\$30.6M	\$51.2M	\$62.5M	\$63.9M	\$50.8M	\$37.9M	\$30.5M	\$36.1M	\$45.1M	\$40.6M	\$32.2M
Percent Change from Prior Year	131%	59%	4%	-27%	-22%	-17%	-15%	4%	-14%	-27%	-13%	-34%	-79%

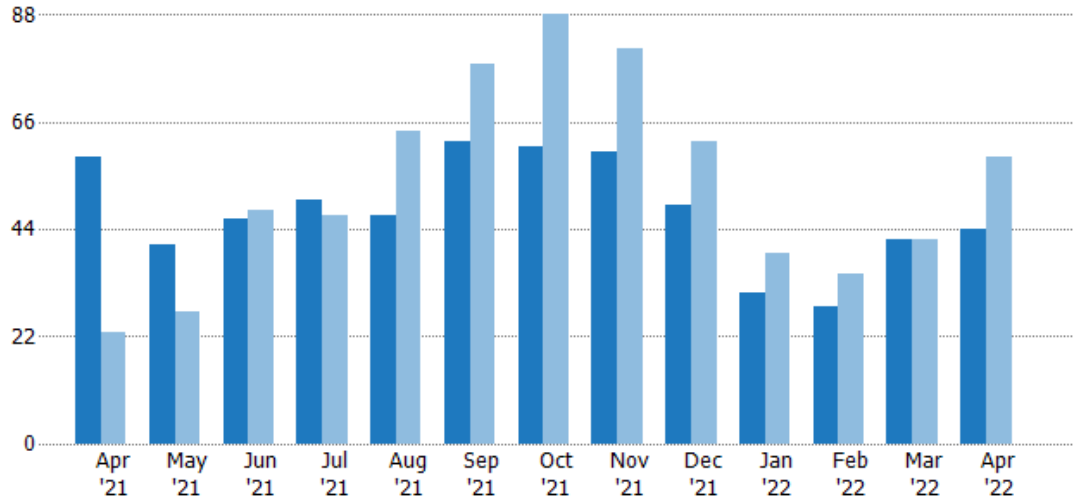
Closed Sales

The total number of residential properties sold each month.

Filters Used

State: VT
County: Bennington County, Vermont
Property Type: Condo/Townhouse/Apt., Single Family

Month/Year	Count	% Chg.
Apr '22	44	-25.4%
Apr '21	59	156.5%
Apr '20	23	56.5%



Current Year	59	41	46	50	47	62	61	60	49	31	28	42	44
Prior Year	23	27	48	47	64	78	88	81	62	39	35	42	59
Percent Change from Prior Year	157%	52%	-4%	6%	-27%	-21%	-31%	-26%	-21%	-21%	-20%	0%	-25%

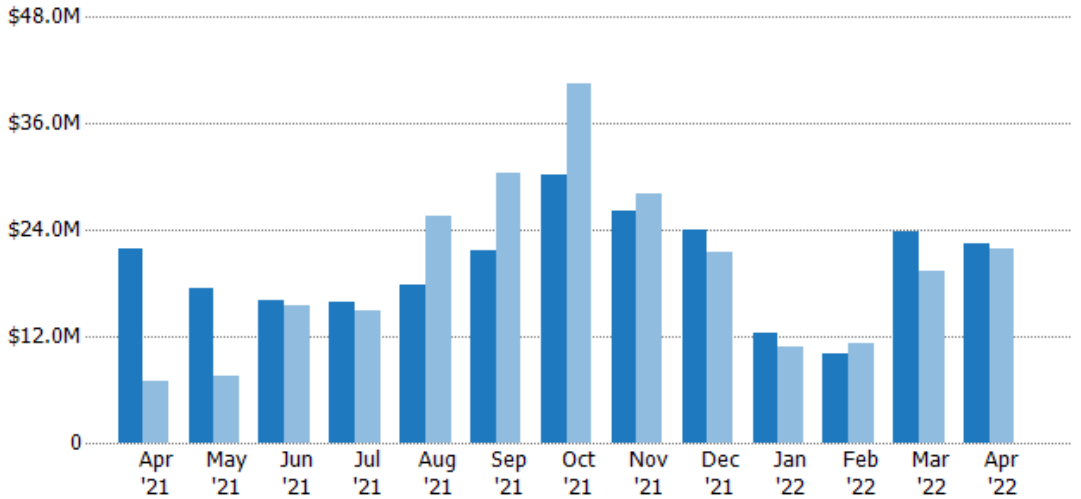
Closed Sales Volume

The sum of the sales price of residential properties sold each month.

Filters Used

State: VT
County: Bennington County, Vermont
Property Type: Condo/Townhouse/Apt., Single Family

Month/Year	Volume	% Chg.
Apr '22	\$22.4M	2.1%
Apr '21	\$21.9M	216.3%
Apr '20	\$6.94M	35%



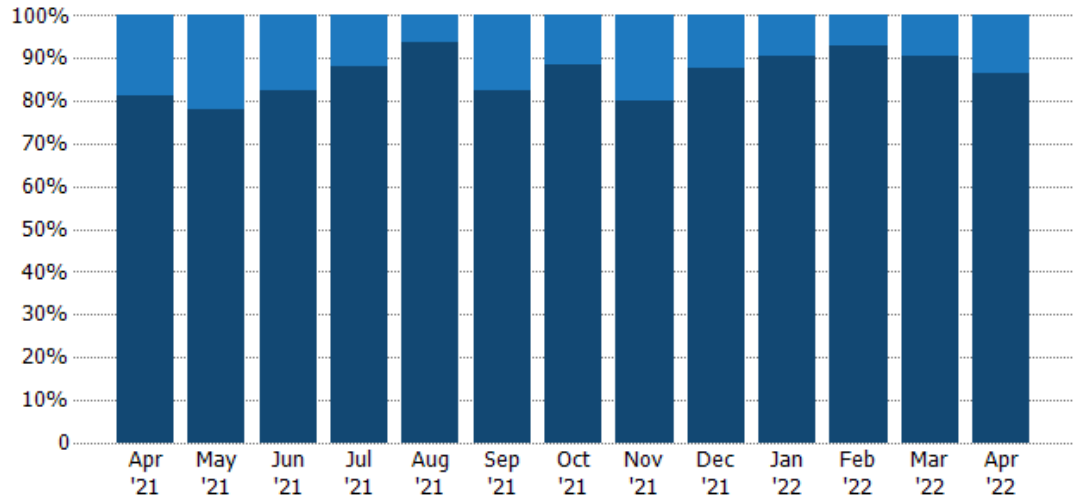
Current Year	\$21.9M	\$17.4M	\$16M	\$15.9M	\$17.9M	\$21.8M	\$30.3M	\$26.2M	\$24.1M	\$12.3M	\$10.1M	\$23.8M	\$22.4M
Prior Year	\$6.94M	\$7.49M	\$15.5M	\$14.8M	\$25.5M	\$30.4M	\$40.6M	\$28.1M	\$21.5M	\$10.8M	\$11.2M	\$19.4M	\$21.9M
Percent Change from Prior Year	216%	133%	3%	7%	-30%	-28%	-25%	-7%	12%	14%	-10%	23%	2%

Closed Sales by Property Type

The percentage of residential properties sold each month by property type.

Filters Used

State: VT
County: Bennington County,
Vermont
Property Type:
Condo/Townhouse/Apt., Single
Family



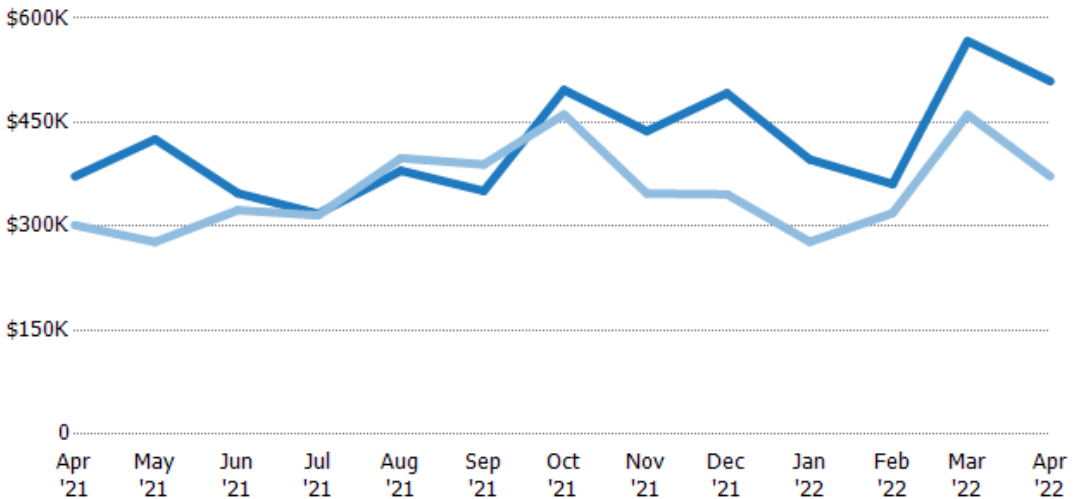
Condo/Townhouse	19%	22%	17%	12%	6%	18%	11%	20%	12%	10%	7%	10%	14%
Single Family Residence	81%	78%	83%	88%	94%	82%	89%	80%	88%	90%	93%	90%	86%

Average Sales Price

The average sales price of the residential properties sold each month.

Filters Used

State: VT
County: Bennington County,
Vermont
Property Type:
Condo/Townhouse/Apt., Single
Family



Current Year	\$372K	\$425K	\$348K	\$318K	\$380K	\$351K	\$497K	\$437K	\$492K	\$396K	\$361K	\$567K	\$509K
Prior Year	\$302K	\$277K	\$323K	\$316K	\$398K	\$389K	\$461K	\$347K	\$346K	\$278K	\$319K	\$461K	\$372K
Percent Change from Prior Year	23%	53%	8%	1%	-5%	-10%	8%	26%	42%	43%	13%	23%	37%

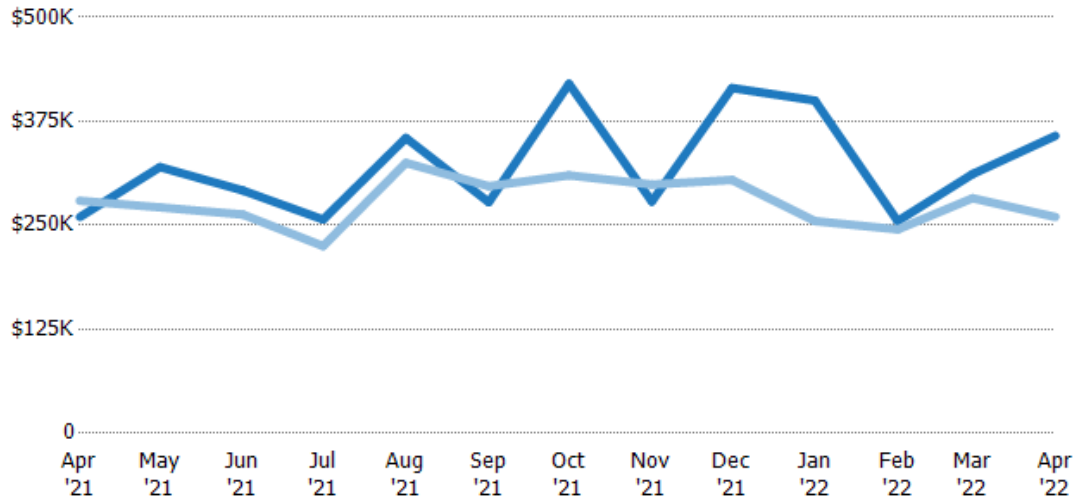
Median Sales Price

The median sales price of the residential properties sold each month.

Filters Used

State: VT
County: Bennington County, Vermont
Property Type: Condo/Townhouse/Apt., Single Family

Month/Year	Price	% Chg.
Apr '22	\$358K	37.5%
Apr '21	\$260K	-7%
Apr '20	\$280K	-22.4%



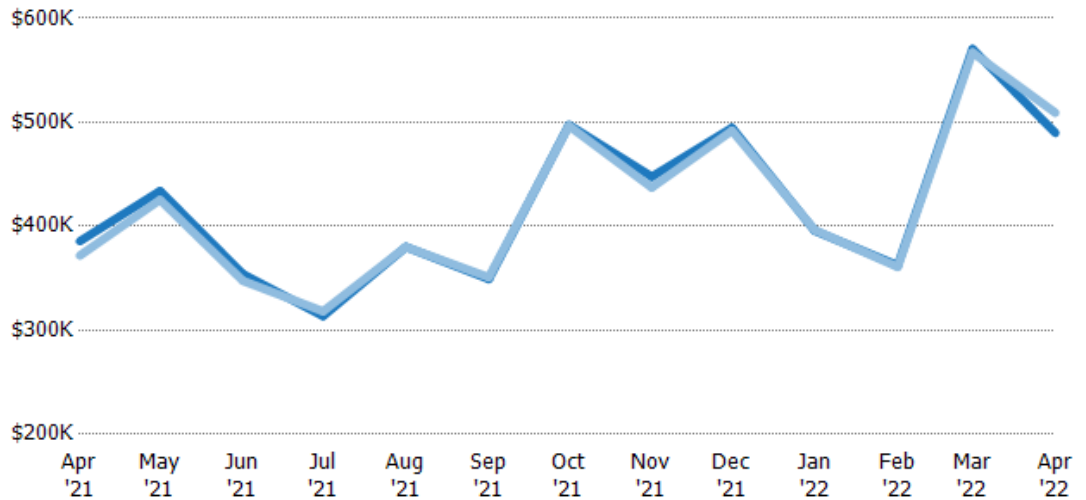
Current Year	\$260K	\$320K	\$292K	\$257K	\$355K	\$278K	\$420K	\$279K	\$415K	\$400K	\$255K	\$312K	\$358K
Prior Year	\$280K	\$272K	\$263K	\$225K	\$325K	\$297K	\$310K	\$299K	\$305K	\$255K	\$245K	\$283K	\$260K
Percent Change from Prior Year	-7%	18%	11%	14%	9%	-6%	35%	-7%	36%	57%	4%	10%	38%

Average Sales Price vs Average Listing Price

The average sales price as a percentage of the average listing price for properties sold each month.

Filters Used

State: VT
County: Bennington County, Vermont
Property Type: Condo/Townhouse/Apt., Single Family



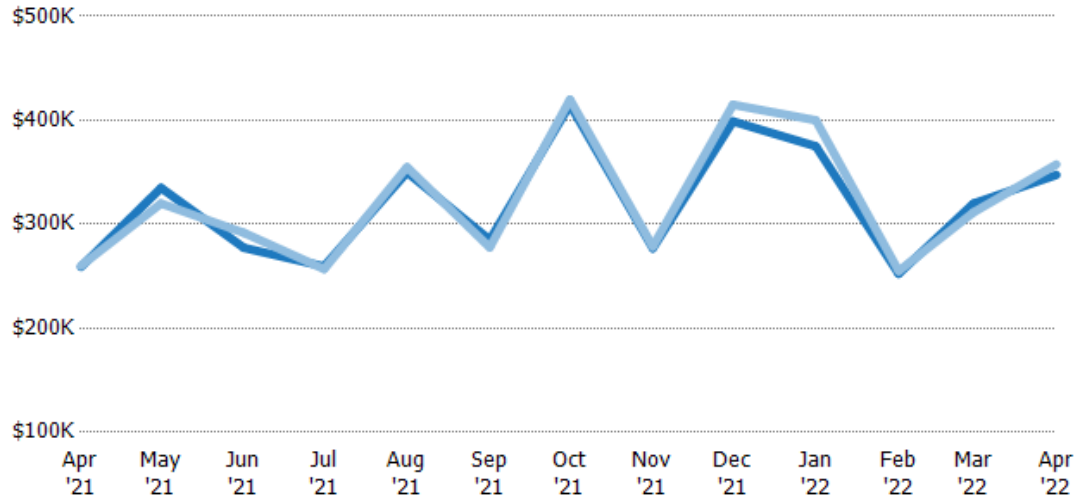
Avg List Price	\$386K	\$434K	\$354K	\$314K	\$380K	\$349K	\$497K	\$448K	\$495K	\$396K	\$362K	\$570K	\$490K
Avg Sales Price	\$372K	\$425K	\$348K	\$318K	\$380K	\$351K	\$497K	\$437K	\$492K	\$396K	\$361K	\$567K	\$509K
Avg Sales Price as a % of Avg List Price	96%	98%	98%	101%	100%	100%	100%	98%	99%	100%	100%	99%	104%

Median Sales Price vs Median Listing Price

The median sales price as a percentage of the median listing price for properties sold each month.

Filters Used

State: VT
County: Bennington County,
Vermont
Property Type:
Condo/Townhouse/Apt., Single
Family

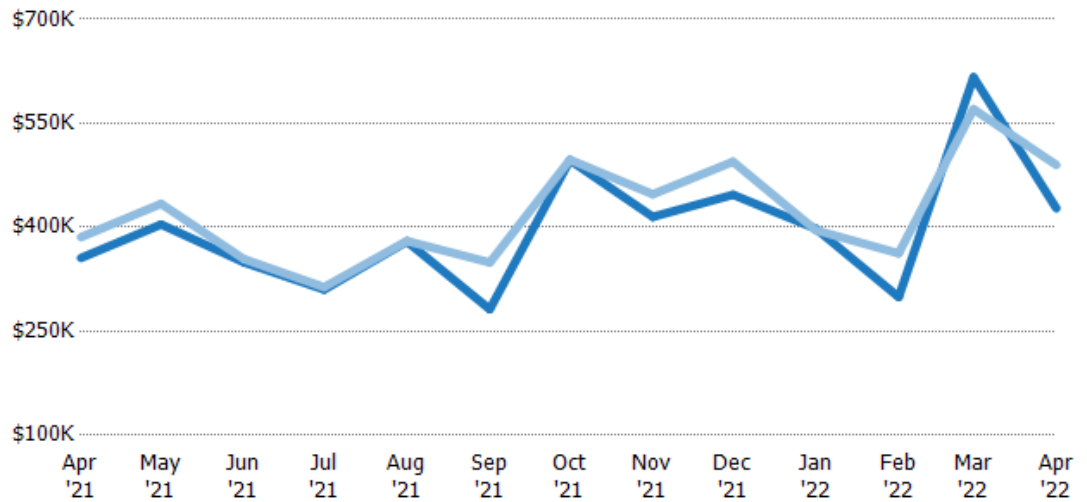


Average Sales Price vs Average Est Value

The average sales price as a percentage of the average AVM or RVM® valuation estimate for properties sold each month.

Filters Used

State: VT
County: Bennington County,
Vermont
Property Type:
Condo/Townhouse/Apt., Single
Family

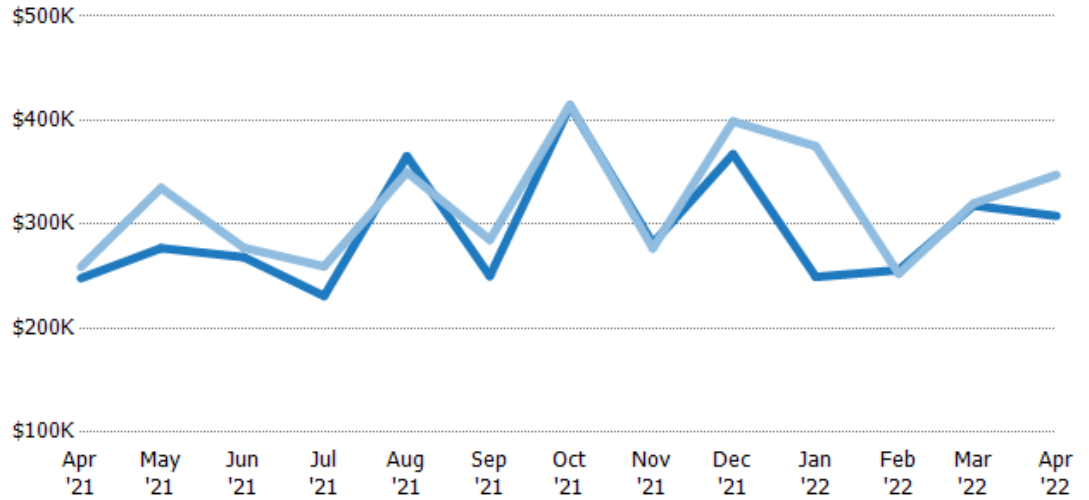


Median Sales Price vs Median Est Value

The median sales price as a percent of the median AVM or RVM® valuation estimate for properties sold each month.

Filters Used

State: VT
County: Bennington County,
Vermont
Property Type:
Condo/Townhouse/Apt., Single
Family



Median Est Value	\$248K	\$277K	\$268K	\$231K	\$365K	\$250K	\$414K	\$282K	\$368K	\$249K	\$256K	\$318K	\$308K
Median Sales Price	\$259K	\$335K	\$277K	\$260K	\$350K	\$285K	\$415K	\$277K	\$399K	\$375K	\$252K	\$320K	\$347K
Med Sales Price as a % of Med Est Value	104%	121%	103%	112%	96%	114%	100%	98%	109%	150%	99%	101%	113%