

## Summary of Key Listing and Sales Metrics

A summary of the key metrics selected to be included in the report. MLS sources where licensed.

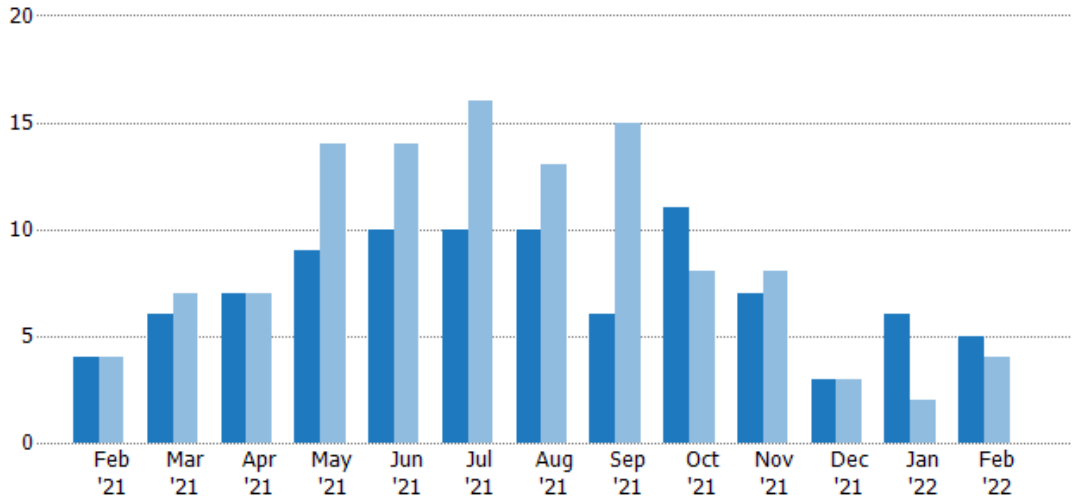
| Key Metrics                            | Feb 2022     | Feb 2021     | + / -  | YTD 2022     | YTD 2021     | + / -   |
|--|--------------|--------------|--------|--------------|--------------|---------|
| <b>Listing Activity Charts Metrics</b> |              |              |        |              |              |         |
| New Listing Count                      | 5            | 4            | +25%   | 11           | 6            | +83.3%  |
| New Listing Volume                     | \$4,429,000  | \$4,541,000  | -2.5%  | \$14,568,500 | \$5,639,999  | +158.3% |
| Active Listing Count                   | 9            | 25           | -64%   | N/A          | N/A          |         |
| Active Listing Volume                  | \$15,417,000 | \$33,094,600 | -53.4% | N/A          | N/A          |         |
| Average Listing Price                  | \$1,713,000  | \$1,323,784  | +29.4% | \$2,004,262  | \$1,240,367  | +61.6%  |
| Median Listing Price                   | \$949,000    | \$695,000    | +36.5% | \$1,476,714  | \$644,518    | +129.1% |
| Median Days in RPR                     | 118          | 237          | -50.2% | 96.85        | 217.67       | -55.5%  |
| Months of Inventory                    | 1            | 2.1          | -52%   | 1.2          | 7.9          | -85.2%  |
| Absorption Rate                        | 100%         | 48%          | +52%   | 85.71%       | 12.73%       | +73%    |
| <b>Sales Activity Charts Metrics</b>   |              |              |        |              |              |         |
| New Pending Sales Count                | 1            | 7            | -85.7% | 5            | 18           | -72.2%  |
| New Pending Sales Volume               | \$345,000    | \$4,702,999  | -92.7% | \$3,373,500  | \$11,118,498 | -69.7%  |
| Pending Sales Count                    | 3            | 13           | -76.9% | N/A          | N/A          |         |
| Pending Sales Volume                   | \$1,739,500  | \$8,566,998  | -79.7% | N/A          | N/A          |         |
| Closed Sales Count                     | 1            | 6            | -83.3% | 10           | 18           | -44.4%  |
| Closed Sales Volume                    | \$285,560    | \$3,970,290  | -92.8% | \$8,445,060  | \$15,306,790 | -44.8%  |
| Average Sales Price                    | \$285,560    | \$661,715    | -56.8% | \$844,506    | \$850,377    | -0.7%   |
| Median Sales Price                     | \$285,560    | \$572,500    | -50.1% | \$622,556    | \$533,333    | +16.7%  |

## New Listings

The number of new residential listings that were added each month.

### Filters Used

ZIP: South Woodstock, VT 05071,  
Woodstock, VT 05091  
Property Type:  
Condo/Townhouse/Apt., Single  
Family



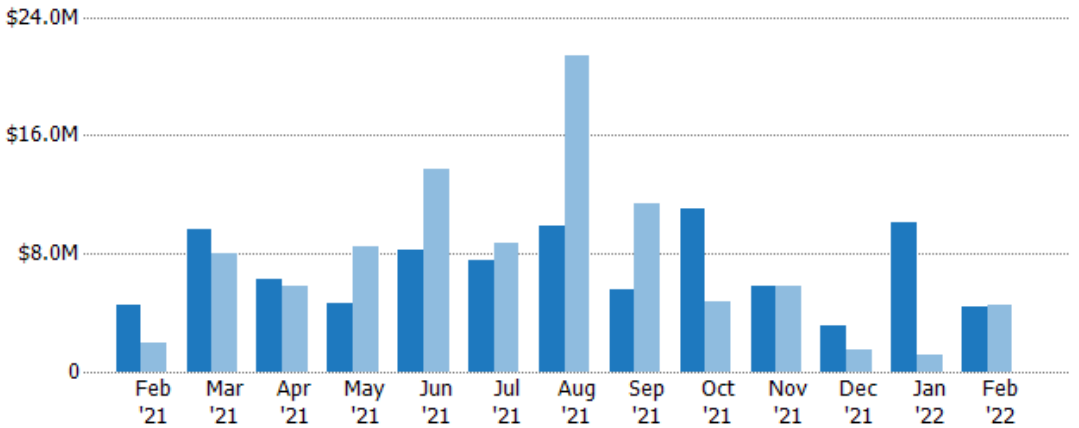
| Month/Year | Current Year | Prior Year | Percent Change from Prior Year |
|------------|--------------|------------|--------------------------------|
| Feb '21    | 4            | 4          | 0%                             |
| Mar '21    | 6            | 7          | -14%                           |
| Apr '21    | 7            | 7          | 0%                             |
| May '21    | 9            | 14         | -36%                           |
| Jun '21    | 10           | 14         | -29%                           |
| Jul '21    | 10           | 16         | -38%                           |
| Aug '21    | 10           | 13         | -23%                           |
| Sep '21    | 6            | 15         | -60%                           |
| Oct '21    | 11           | 8          | 38%                            |
| Nov '21    | 7            | 8          | -13%                           |
| Dec '21    | 3            | 3          | 0%                             |
| Jan '22    | 6            | 2          | 200%                           |
| Feb '22    | 5            | 4          | 25%                            |

## New Listing Volume

The sum of the listing price of residential listings that were added each month.

### Filters Used

ZIP: South Woodstock, VT 05071,  
Woodstock, VT 05091  
Property Type:  
Condo/Townhouse/Apt., Single  
Family



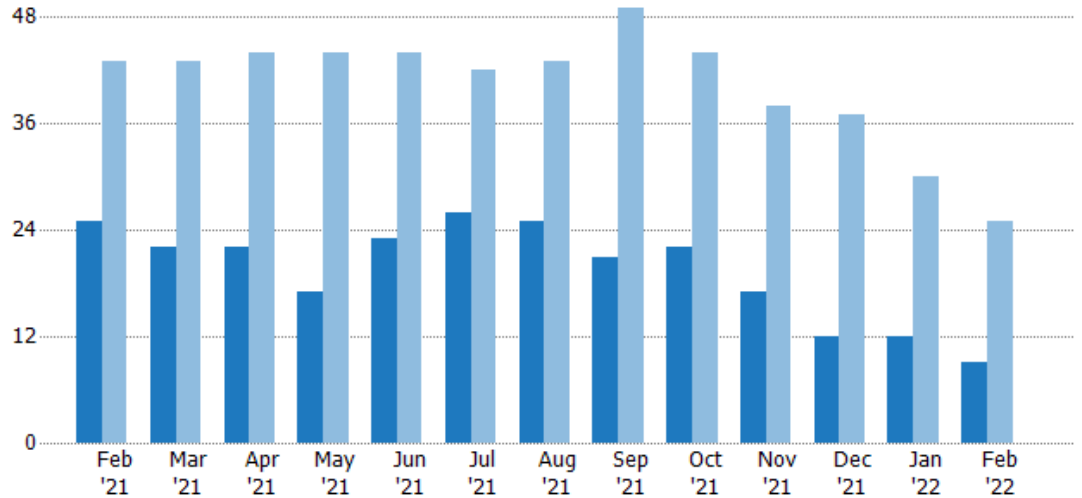
| Month/Year | Current Year | Prior Year | Percent Change from Prior Year |
|------------|--------------|------------|--------------------------------|
| Feb '21    | \$4.54M      | \$1.98M    | 130%                           |
| Mar '21    | \$9.68M      | \$8.05M    | 20%                            |
| Apr '21    | \$6.31M      | \$5.76M    | 9%                             |
| May '21    | \$4.65M      | \$8.52M    | -45%                           |
| Jun '21    | \$8.21M      | \$13.7M    | -40%                           |
| Jul '21    | \$7.51M      | \$8.73M    | -14%                           |
| Aug '21    | \$9.87M      | \$21.4M    | -54%                           |
| Sep '21    | \$5.6M       | \$11.4M    | -51%                           |
| Oct '21    | \$11M        | \$4.78M    | 130%                           |
| Nov '21    | \$5.76M      | \$5.82M    | -1%                            |
| Dec '21    | \$3.14M      | \$1.49M    | 110%                           |
| Jan '22    | \$10.1M      | \$1.1M     | 823%                           |
| Feb '22    | \$4.43M      | \$4.54M    | -2%                            |

## Active Listings

The number of active residential listings at the end of each month.

### Filters Used

ZIP: South Woodstock, VT 05071,  
Woodstock, VT 05091  
Property Type:  
Condo/Townhouse/Apt., Single  
Family



| Month/Year | Count | % Chg. |
|------------|-------|--------|
| Feb '22    | 9     | -64%   |
| Feb '21    | 25    | -41.9% |
| Feb '20    | 43    | 9.3%   |

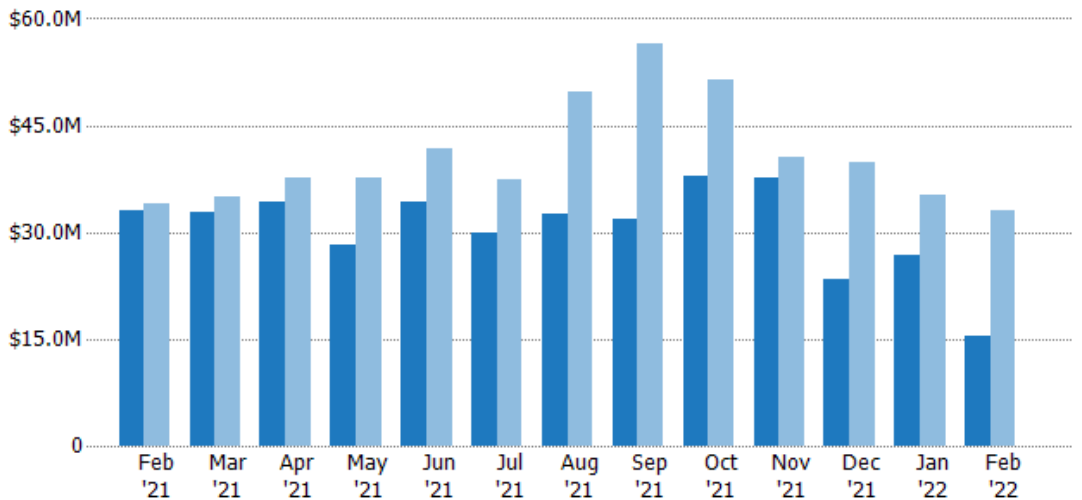
| Month/Year | Count | % Chg. |
|------------|-------|--------|
| Feb '22    | 9     | -64%   |
| Feb '21    | 25    | -41.9% |
| Feb '20    | 43    | 9.3%   |

## Active Listing Volume

The sum of the listing price of active residential listings at the end of each month.

### Filters Used

ZIP: South Woodstock, VT 05071,  
Woodstock, VT 05091  
Property Type:  
Condo/Townhouse/Apt., Single  
Family



| Month/Year | Volume  | % Chg. |
|------------|---------|--------|
| Feb '22    | \$15.4M | -53.4% |
| Feb '21    | \$33.1M | -2.5%  |
| Feb '20    | \$33.9M | -17.9% |

| Month/Year | Volume  | % Chg. |
|------------|---------|--------|
| Feb '22    | \$15.4M | -53.4% |
| Feb '21    | \$33.1M | -2.5%  |
| Feb '20    | \$33.9M | -17.9% |

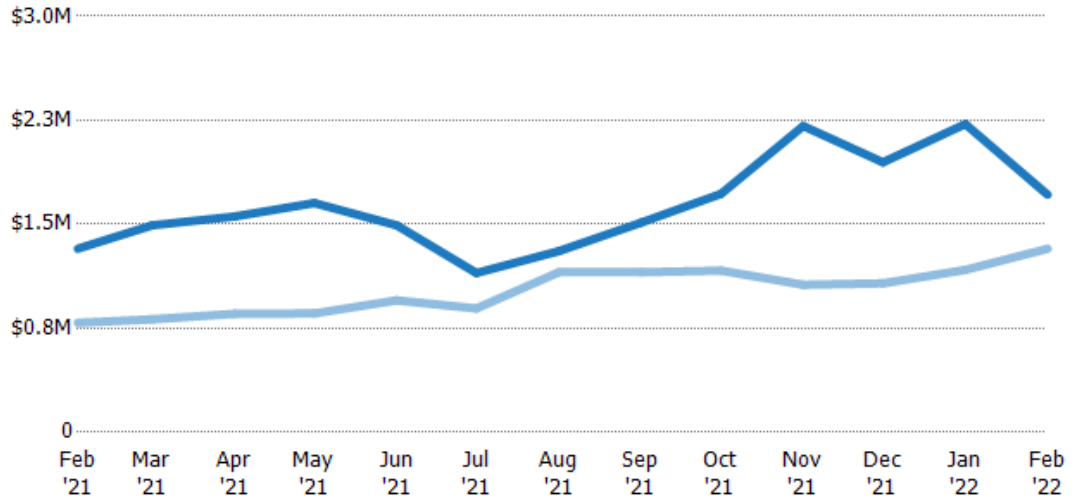
## Average Listing Price

The average listing price of active residential listings at the end of each month.

### Filters Used

ZIP: South Woodstock, VT 05071,  
Woodstock, VT 05091  
Property Type:  
Condo/Townhouse/Apt., Single  
Family

| Month/<br>Year | Price   | % Chg. |
|----------------|---------|--------|
| Feb '22        | \$1.71M | 29.4%  |
| Feb '21        | \$1.32M | 67.7%  |
| Feb '20        | \$789K  | -24.9% |



|                                |         |         |         |         |         |         |         |         |         |         |         |         |         |
|--------------------------------|---------|---------|---------|---------|---------|---------|---------|---------|---------|---------|---------|---------|---------|
| Current Year                   | \$1.32M | \$1.49M | \$1.56M | \$1.65M | \$1.49M | \$1.15M | \$1.31M | \$1.51M | \$1.72M | \$2.21M | \$1.95M | \$2.22M | \$1.71M |
| Prior Year                     | \$789K  | \$815K  | \$854K  | \$857K  | \$951K  | \$893K  | \$1.15M | \$1.15M | \$1.17M | \$1.06M | \$1.07M | \$1.17M | \$1.32M |
| Percent Change from Prior Year | 68%     | 83%     | 82%     | 93%     | 57%     | 29%     | 13%     | 31%     | 47%     | 108%    | 81%     | 90%     | 29%     |

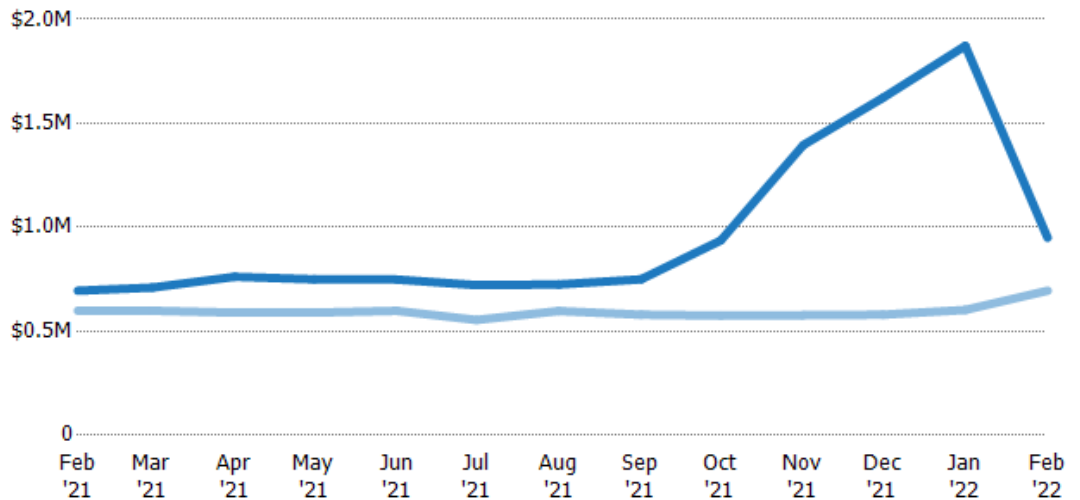
## Median Listing Price

The median listing price of active residential listings at the end of each month.

### Filters Used

ZIP: South Woodstock, VT 05071,  
Woodstock, VT 05091  
Property Type:  
Condo/Townhouse/Apt., Single  
Family

| Month/<br>Year | Price  | % Chg. |
|----------------|--------|--------|
| Feb '22        | \$949K | 36.5%  |
| Feb '21        | \$695K | 16%    |
| Feb '20        | \$599K | -3.2%  |



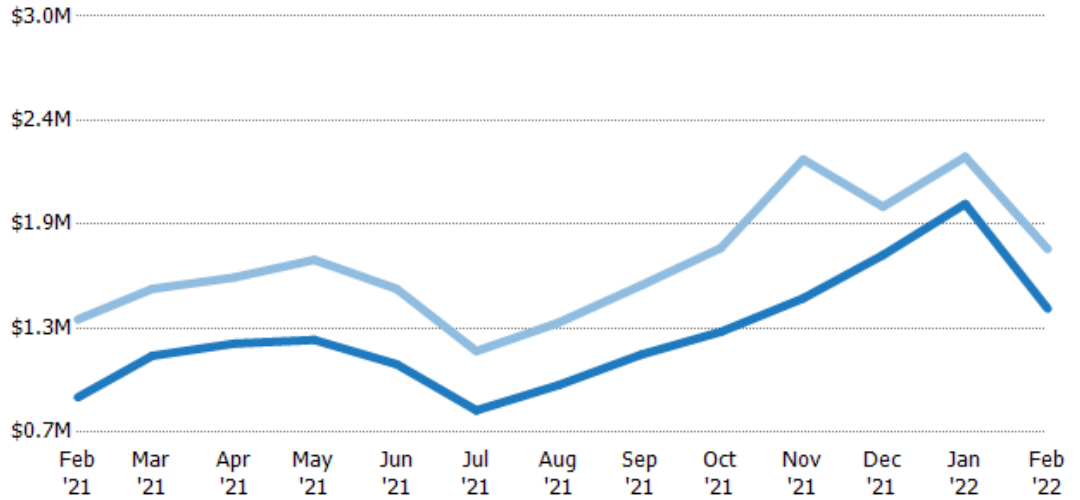
|                                |        |        |        |        |        |        |        |        |        |        |         |         |        |
|--------------------------------|--------|--------|--------|--------|--------|--------|--------|--------|--------|--------|---------|---------|--------|
| Current Year                   | \$695K | \$710K | \$762K | \$750K | \$749K | \$722K | \$725K | \$750K | \$937K | \$1.4M | \$1.62M | \$1.87M | \$949K |
| Prior Year                     | \$599K | \$599K | \$589K | \$589K | \$598K | \$554K | \$598K | \$580K | \$575K | \$577K | \$580K  | \$602K  | \$695K |
| Percent Change from Prior Year | 16%    | 19%    | 29%    | 27%    | 25%    | 30%    | 21%    | 29%    | 63%    | 142%   | 180%    | 211%    | 37%    |

## Average Listing Price vs Average Est Value

The average listing price as a percentage of the average AVM or RVM® valuation estimate for active listings each month.

### Filters Used

ZIP: South Woodstock, VT 05071,  
Woodstock, VT 05091  
Property Type:  
Condo/Townhouse/Apt., Single  
Family



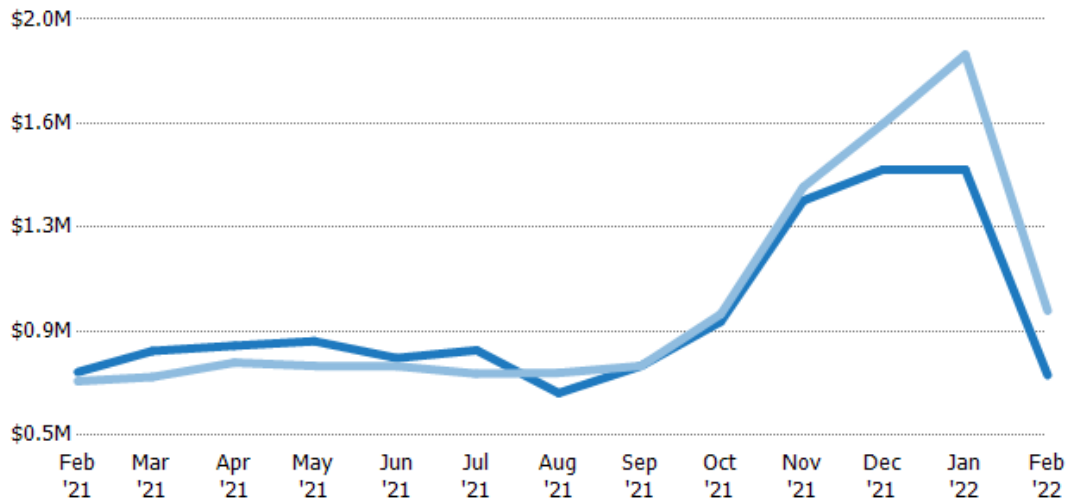
|   |         |         |         |         |         |         |         |         |         |         |         |         |         |
|---|---------|---------|---------|---------|---------|---------|---------|---------|---------|---------|---------|---------|---------|
| Avg Est Value                             | \$893K  | \$1.12M | \$1.19M | \$1.21M | \$1.08M | \$821K  | \$961K  | \$1.13M | \$1.26M | \$1.44M | \$1.68M | \$1.96M | \$1.38M |
| Avg Listing Price                         | \$1.32M | \$1.49M | \$1.56M | \$1.65M | \$1.49M | \$1.15M | \$1.31M | \$1.51M | \$1.72M | \$2.21M | \$1.95M | \$2.22M | \$1.71M |
| Avg Listing Price as a % of Avg Est Value | 148%    | 133%    | 131%    | 137%    | 139%    | 140%    | 136%    | 134%    | 137%    | 153%    | 116%    | 113%    | 124%    |

## Median Listing Price vs Median Est Value

The median listing price as a percentage of the median AVM or RVM® valuation estimate for active listings each month.

### Filters Used

ZIP: South Woodstock, VT 05071,  
Woodstock, VT 05091  
Property Type:  
Condo/Townhouse/Apt., Single  
Family



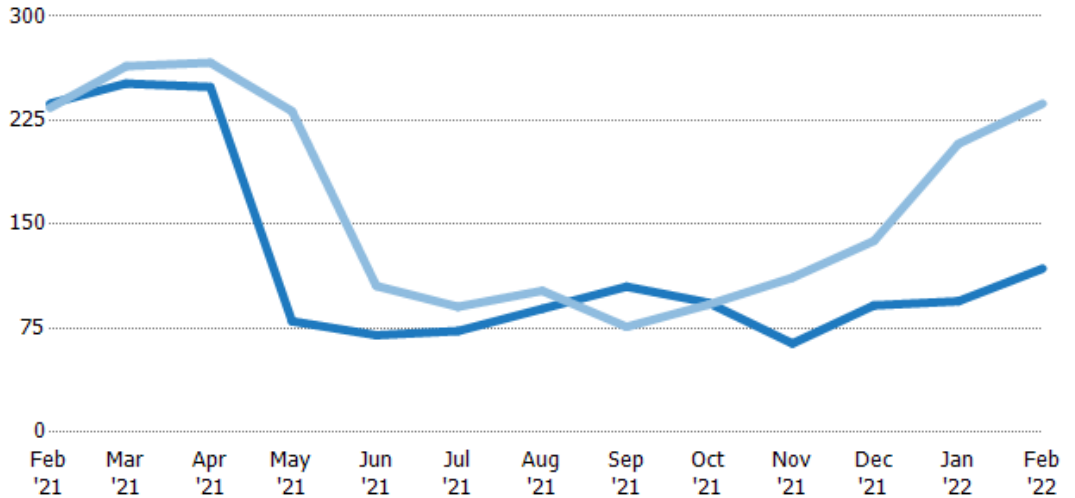
|   |        |        |        |        |        |        |        |        |        |         |         |         |        |
|---|--------|--------|--------|--------|--------|--------|--------|--------|--------|---------|---------|---------|--------|
| Median Est Value                          | \$728K | \$804K | \$823K | \$839K | \$778K | \$807K | \$652K | \$750K | \$910K | \$1.35M | \$1.46M | \$1.46M | \$717K |
| Median Listing Price                      | \$695K | \$710K | \$762K | \$750K | \$749K | \$722K | \$725K | \$750K | \$937K | \$1.4M  | \$1.62M | \$1.87M | \$949K |
| Med Listing Price as a % of Med Est Value | 95%    | 88%    | 93%    | 89%    | 96%    | 90%    | 111%   | 100%   | 103%   | 104%    | 111%    | 128%    | 132%   |

## Median Days in RPR

The median number of days between when residential properties are first displayed as active listings in RPR and when accepted offers have been noted in RPR.

### Filters Used

ZIP: South Woodstock, VT 05071,  
Woodstock, VT 05091  
Property Type:  
Condo/Townhouse/Apt., Single  
Family



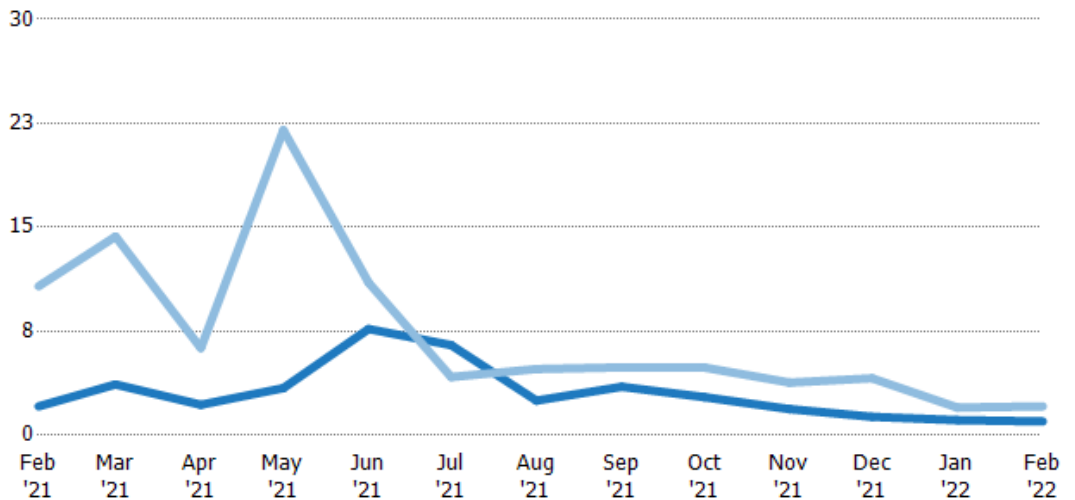
|                                | Feb '21 | Mar '21 | Apr '21 | May '21 | Jun '21 | Jul '21 | Aug '21 | Sep '21 | Oct '21 | Nov '21 | Dec '21 | Jan '22 | Feb '22 |
|--------------------------------|---------|---------|---------|---------|---------|---------|---------|---------|---------|---------|---------|---------|---------|
| Current Year                   | 237     | 252     | 249     | 80      | 70      | 73      | 89      | 105     | 93.5    | 64      | 91.5    | 94.5    | 118     |
| Prior Year                     | 234     | 264     | 267     | 232     | 106     | 90.5    | 102     | 76      | 92      | 112     | 138     | 208     | 237     |
| Percent Change from Prior Year | 1%      | -5%     | -7%     | -65%    | -34%    | -19%    | -13%    | 38%     | 2%      | -43%    | -34%    | -55%    | -50%    |

## Months of Inventory

The number of months it would take to exhaust active listings at the current sales rate.

### Filters Used

ZIP: South Woodstock, VT 05071,  
Woodstock, VT 05091  
Property Type:  
Condo/Townhouse/Apt., Single  
Family



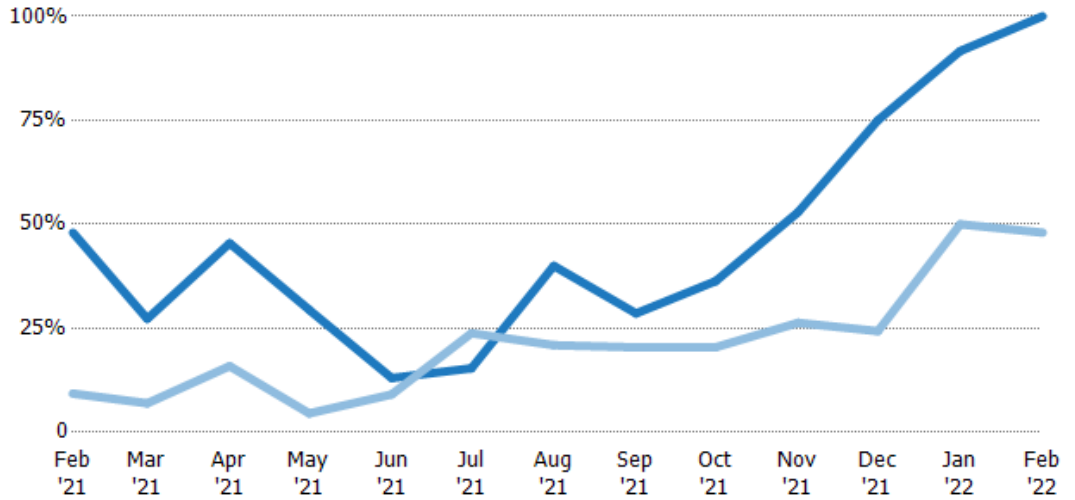
|                                | Feb '21 | Mar '21 | Apr '21 | May '21 | Jun '21 | Jul '21 | Aug '21 | Sep '21 | Oct '21 | Nov '21 | Dec '21 | Jan '22 | Feb '22 |
|--------------------------------|---------|---------|---------|---------|---------|---------|---------|---------|---------|---------|---------|---------|---------|
| Current Year                   | 2.08    | 3.67    | 2.2     | 3.4     | 7.67    | 6.5     | 2.5     | 3.5     | 2.75    | 1.89    | 1.33    | 1.09    | 1       |
| Prior Year                     | 10.8    | 14.3    | 6.29    | 22      | 11      | 4.2     | 4.78    | 4.9     | 4.89    | 3.8     | 4.11    | 2       | 2.08    |
| Percent Change from Prior Year | -81%    | -74%    | -65%    | -85%    | -30%    | 55%     | -48%    | -29%    | -44%    | -50%    | -68%    | -45%    | -52%    |

## Absorption Rate

The percentage of inventory sold per month.

### Filters Used

ZIP: South Woodstock, VT 05071,  
Woodstock, VT 05091  
Property Type:  
Condo/Townhouse/Apt., Single  
Family



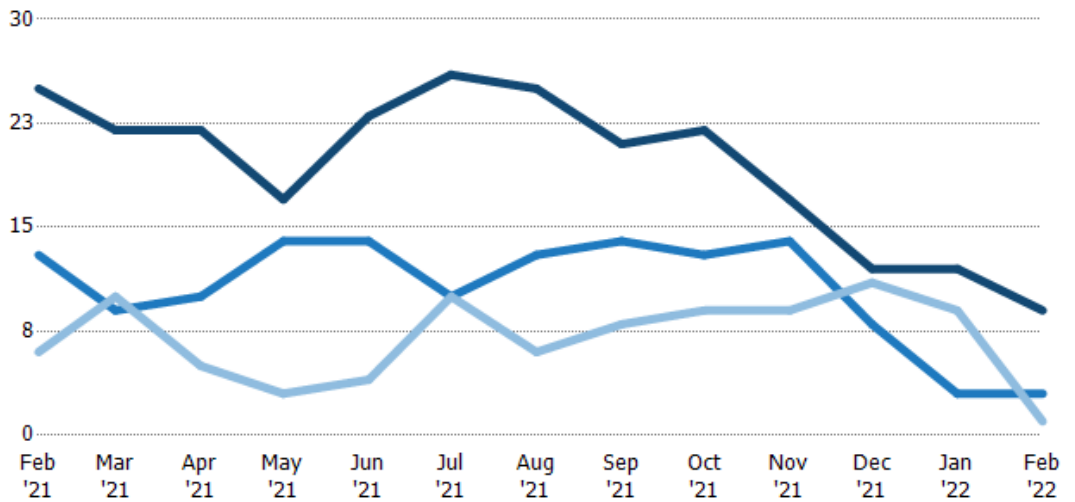
|                        | Feb '21 | Mar '21 | Apr '21 | May '21 | Jun '21 | Jul '21 | Aug '21 | Sep '21 | Oct '21 | Nov '21 | Dec '21 | Jan '22 | Feb '22 |
|------------------------|---------|---------|---------|---------|---------|---------|---------|---------|---------|---------|---------|---------|---------|
| Current Year           | 48%     | 27%     | 45%     | 29%     | 13%     | 15%     | 40%     | 29%     | 36%     | 53%     | 75%     | 92%     | 100%    |
| Prior Year             | 9%      | 7%      | 16%     | 5%      | 9%      | 24%     | 21%     | 20%     | 20%     | 26%     | 24%     | 50%     | 48%     |
| Change from Prior Year | -39%    | -20%    | -30%    | -25%    | -4%     | 8%      | -19%    | -8%     | -16%    | -27%    | -51%    | -42%    | -52%    |

## Active/Pending/Sold Units

The number of residential properties that were Active, Pending and Sold each month.

### Filters Used

ZIP: South Woodstock, VT 05071,  
Woodstock, VT 05091  
Property Type:  
Condo/Townhouse/Apt., Single  
Family



|         | Feb '21 | Mar '21 | Apr '21 | May '21 | Jun '21 | Jul '21 | Aug '21 | Sep '21 | Oct '21 | Nov '21 | Dec '21 | Jan '22 | Feb '22 |
|---------|---------|---------|---------|---------|---------|---------|---------|---------|---------|---------|---------|---------|---------|
| Active  | 25      | 22      | 22      | 17      | 23      | 26      | 25      | 21      | 22      | 17      | 12      | 12      | 9       |
| Pending | 13      | 9       | 10      | 14      | 14      | 10      | 13      | 14      | 13      | 14      | 8       | 3       | 3       |
| Sold    | 6       | 10      | 5       | 3       | 4       | 10      | 6       | 8       | 9       | 9       | 11      | 9       | 1       |

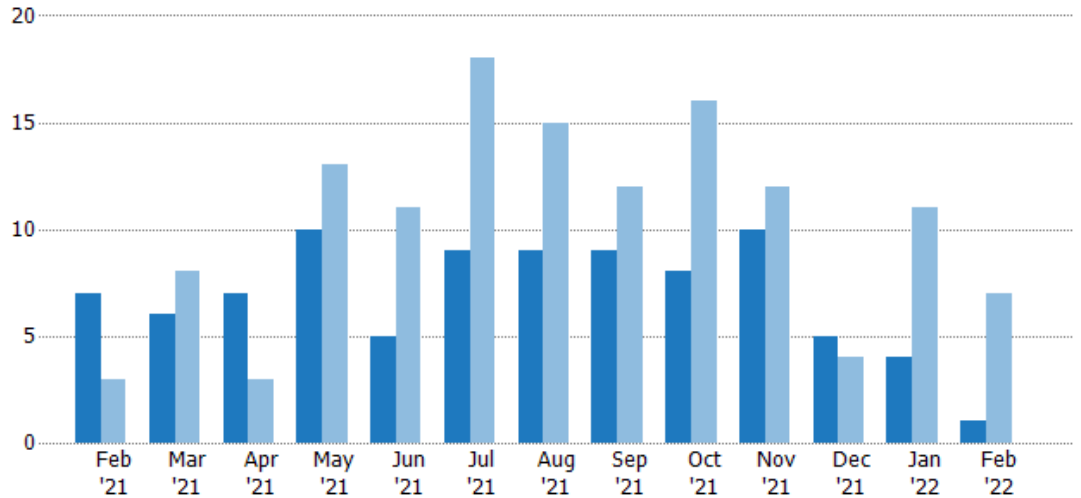
## New Pending Sales

The number of residential properties with accepted offers that were added each month.

### Filters Used

ZIP: South Woodstock, VT 05071,  
Woodstock, VT 05091  
Property Type:  
Condo/Townhouse/Apt., Single  
Family

| Month/<br>Year | Count | % Chg. |
|----------------|-------|--------|
| Feb '22        | 1     | -85.7% |
| Feb '21        | 7     | 133.3% |
| Feb '20        | 3     | 133.3% |



|                                |      |      |      |      |      |      |      |      |      |      |     |      |      |
|--------------------------------|------|------|------|------|------|------|------|------|------|------|-----|------|------|
| Current Year                   | 7    | 6    | 7    | 10   | 5    | 9    | 9    | 9    | 8    | 10   | 5   | 4    | 1    |
| Prior Year                     | 3    | 8    | 3    | 13   | 11   | 18   | 15   | 12   | 16   | 12   | 4   | 11   | 7    |
| Percent Change from Prior Year | 133% | -25% | 133% | -23% | -55% | -50% | -40% | -25% | -50% | -17% | 25% | -64% | -86% |

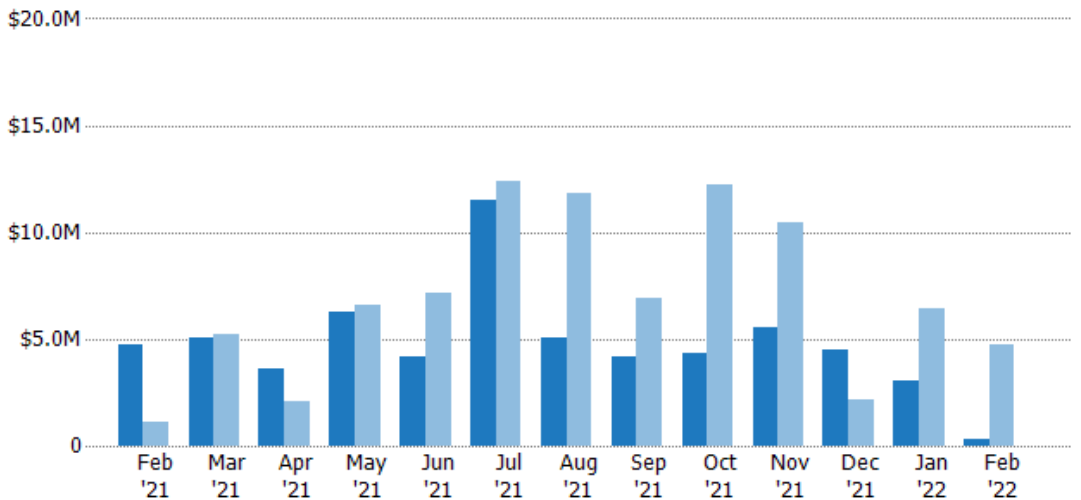
## New Pending Sales Volume

The sum of the sales price of residential properties with accepted offers that were added each month.

### Filters Used

ZIP: South Woodstock, VT 05071,  
Woodstock, VT 05091  
Property Type:  
Condo/Townhouse/Apt., Single  
Family

| Month/<br>Year | Volume  | % Chg. |
|----------------|---------|--------|
| Feb '22        | \$345K  | -92.7% |
| Feb '21        | \$4.7M  | 323.3% |
| Feb '20        | \$1.11M | 88.1%  |



|                                |         |         |         |         |         |         |         |         |         |         |         |         |        |
|--------------------------------|---------|---------|---------|---------|---------|---------|---------|---------|---------|---------|---------|---------|--------|
| Current Year                   | \$4.7M  | \$5.07M | \$3.64M | \$6.26M | \$4.18M | \$11.5M | \$5.09M | \$4.17M | \$4.3M  | \$5.57M | \$4.48M | \$3.03M | \$345K |
| Prior Year                     | \$1.11M | \$5.18M | \$2.12M | \$6.62M | \$7.14M | \$12.4M | \$11.8M | \$6.93M | \$12.2M | \$10.5M | \$2.18M | \$6.42M | \$4.7M |
| Percent Change from Prior Year | 323%    | -2%     | 72%     | -6%     | -41%    | -8%     | -57%    | -40%    | -65%    | -47%    | 105%    | -53%    | -93%   |



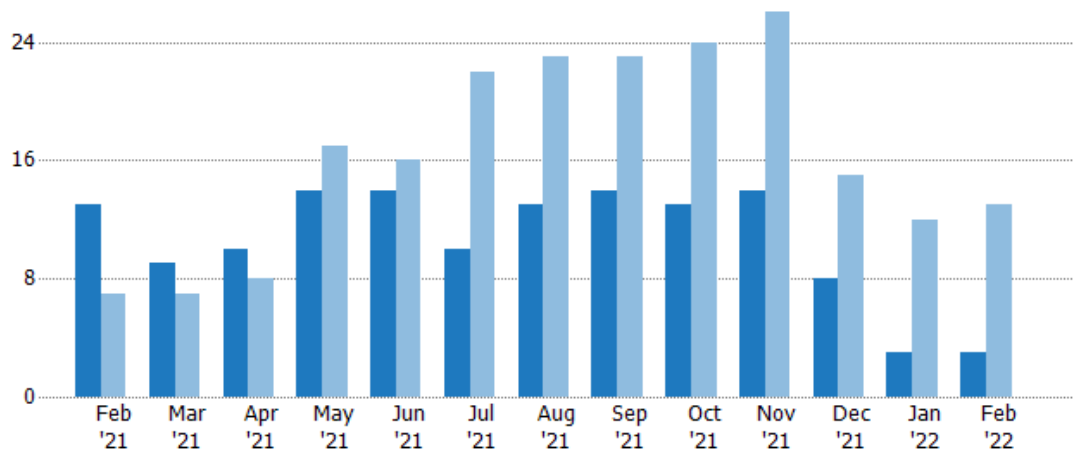
## Pending Sales

The number of residential properties with accepted offers that were available at the end each month.

### Filters Used

ZIP: South Woodstock, VT 05071,  
Woodstock, VT 05091  
Property Type:  
Condo/Townhouse/Apt., Single  
Family

| Month/<br>Year | Count | % Chg. |
|----------------|-------|--------|
| Feb '22        | 3     | -76.9% |
| Feb '21        | 13    | 85.7%  |
| Feb '20        | 7     | 100%   |



|                                |     |     |     |      |      |      |      |      |      |      |      |      |      |
|--------------------------------|-----|-----|-----|------|------|------|------|------|------|------|------|------|------|
| Current Year                   | 13  | 9   | 10  | 14   | 14   | 10   | 13   | 14   | 13   | 14   | 8    | 3    | 3    |
| Prior Year                     | 7   | 7   | 8   | 17   | 16   | 22   | 23   | 23   | 24   | 26   | 15   | 12   | 13   |
| Percent Change from Prior Year | 86% | 29% | 25% | -18% | -13% | -55% | -43% | -39% | -46% | -46% | -47% | -75% | -77% |

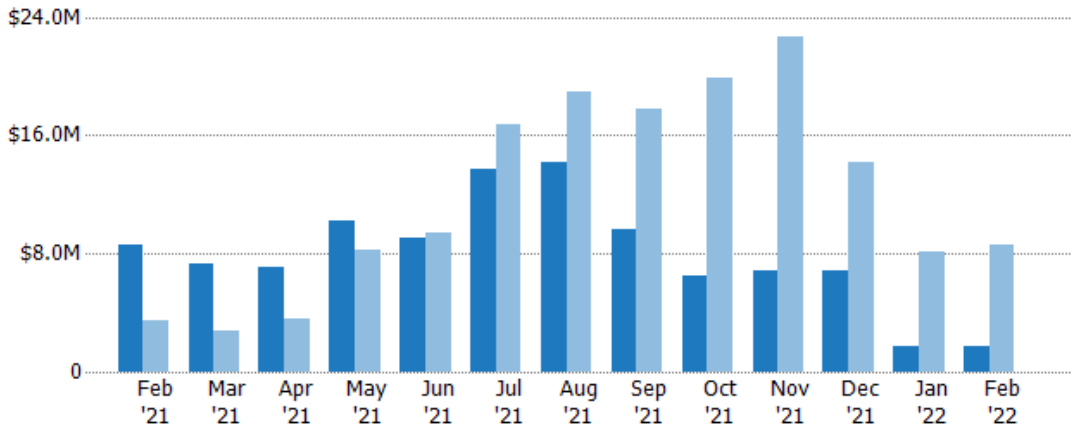
## Pending Sales Volume

The sum of the sales price of residential properties with accepted offers that were available at the end of each month.

### Filters Used

ZIP: South Woodstock, VT 05071,  
Woodstock, VT 05091  
Property Type:  
Condo/Townhouse/Apt., Single  
Family

| Month/<br>Year | Volume  | % Chg. |
|----------------|---------|--------|
| Feb '22        | \$1.74M | -79.7% |
| Feb '21        | \$8.57M | 146.9% |
| Feb '20        | \$3.47M | 75.2%  |



|                                |         |         |         |         |         |         |         |         |         |         |         |         |         |
|--------------------------------|---------|---------|---------|---------|---------|---------|---------|---------|---------|---------|---------|---------|---------|
| Current Year                   | \$8.57M | \$7.3M  | \$7.06M | \$10.2M | \$9.05M | \$13.7M | \$14.2M | \$9.68M | \$6.5M  | \$6.8M  | \$6.81M | \$1.67M | \$1.74M |
| Prior Year                     | \$3.47M | \$2.74M | \$3.62M | \$8.25M | \$9.35M | \$16.8M | \$19M   | \$17.8M | \$19.9M | \$22.6M | \$14.2M | \$8.16M | \$8.57M |
| Percent Change from Prior Year | 147%    | 166%    | 95%     | 23%     | -3%     | -18%    | -25%    | -46%    | -67%    | -70%    | -52%    | -79%    | -80%    |

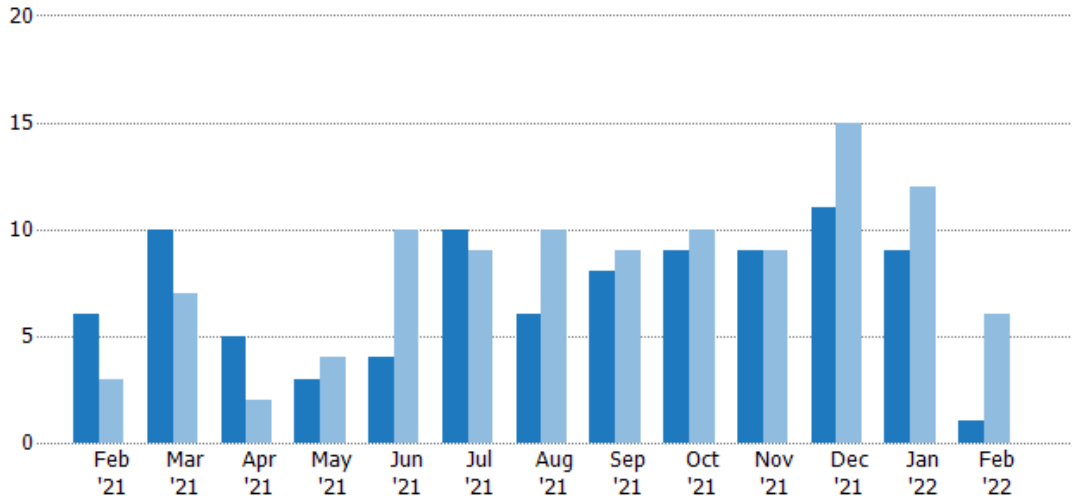
## Closed Sales

The total number of residential properties sold each month.

### Filters Used

ZIP: South Woodstock, VT 05071,  
Woodstock, VT 05091  
Property Type:  
Condo/Townhouse/Apt., Single  
Family

| Month/<br>Year | Count | % Chg. |
|----------------|-------|--------|
| Feb '22        | 1     | -83.3% |
| Feb '21        | 6     | 100%   |
| Feb '20        | 3     | 0%     |



|                                |      |     |      |      |      |     |      |      |      |    |      |      |      |
|--------------------------------|------|-----|------|------|------|-----|------|------|------|----|------|------|------|
| Current Year                   | 6    | 10  | 5    | 3    | 4    | 10  | 6    | 8    | 9    | 9  | 11   | 9    | 1    |
| Prior Year                     | 3    | 7   | 2    | 4    | 10   | 9   | 10   | 9    | 10   | 9  | 15   | 12   | 6    |
| Percent Change from Prior Year | 100% | 43% | 150% | -25% | -60% | 11% | -40% | -11% | -10% | 0% | -27% | -25% | -83% |

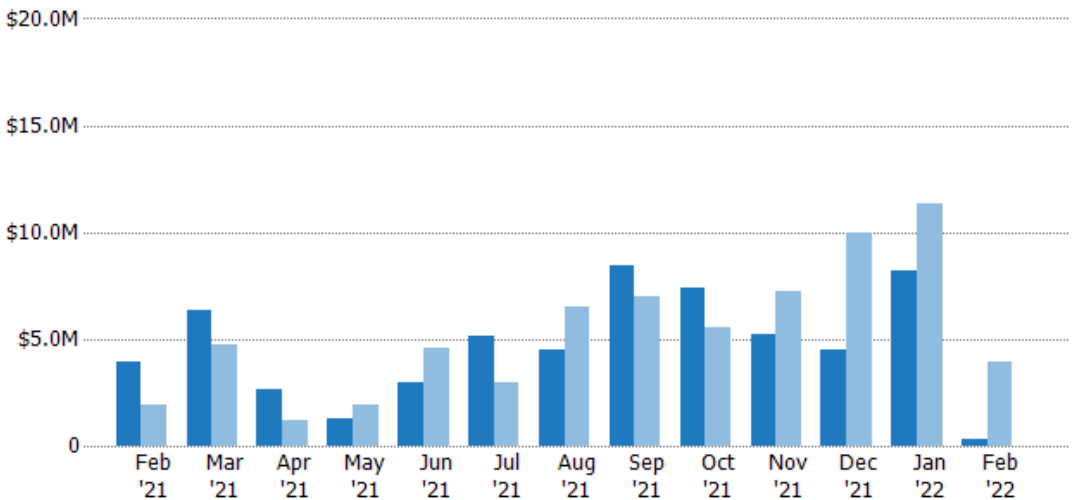
## Closed Sales Volume

The sum of the sales price of residential properties sold each month.

### Filters Used

ZIP: South Woodstock, VT 05071,  
Woodstock, VT 05091  
Property Type:  
Condo/Townhouse/Apt., Single  
Family

| Month/<br>Year | Volume  | % Chg. |
|----------------|---------|--------|
| Feb '22        | \$286K  | -92.8% |
| Feb '21        | \$3.97M | 106.8% |
| Feb '20        | \$1.92M | 40.6%  |



|                                |         |         |         |         |         |         |         |         |         |         |         |         |         |
|--------------------------------|---------|---------|---------|---------|---------|---------|---------|---------|---------|---------|---------|---------|---------|
| Current Year                   | \$3.97M | \$6.32M | \$2.63M | \$1.26M | \$2.99M | \$5.16M | \$4.51M | \$8.42M | \$7.43M | \$5.21M | \$4.53M | \$8.16M | \$286K  |
| Prior Year                     | \$1.92M | \$4.7M  | \$1.18M | \$1.92M | \$4.55M | \$2.99M | \$6.49M | \$7.01M | \$5.53M | \$7.25M | \$9.96M | \$11.3M | \$3.97M |
| Percent Change from Prior Year | 107%    | 34%     | 123%    | -34%    | -34%    | 72%     | -30%    | 20%     | 34%     | -28%    | -54%    | -28%    | -93%    |

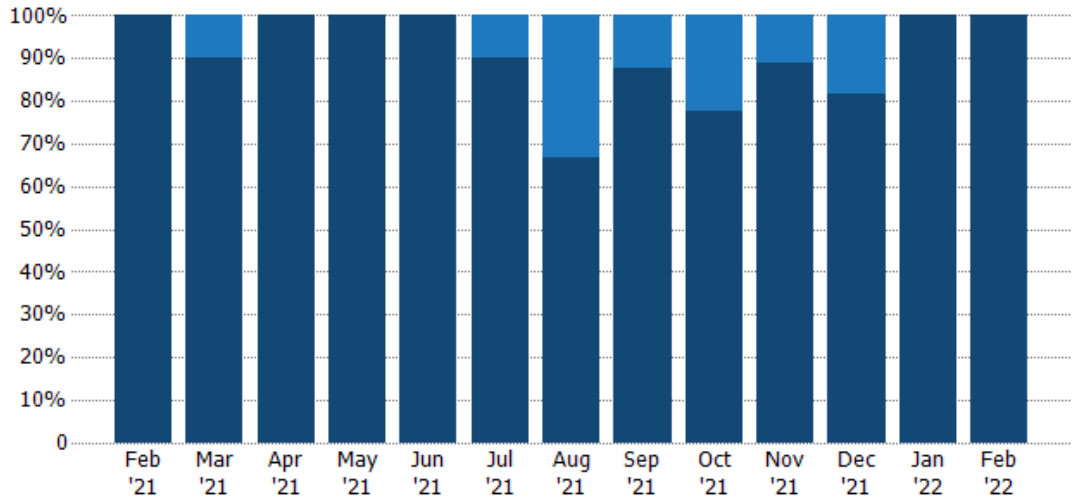
## Closed Sales by Property Type

The percentage of residential properties sold each month by property type.

**Filters Used**

ZIP: South Woodstock, VT 05071,  
Woodstock, VT 05091

Property Type:  
Condo/Townhouse/Apt., Single  
Family



|                         |      |     |      |      |      |     |     |     |     |     |     |      |      |
|-------------------------|------|-----|------|------|------|-----|-----|-----|-----|-----|-----|------|------|
| Condo/Townhouse         | -    | 10% | -    | -    | -    | 10% | 33% | 13% | 22% | 11% | 18% | -    | -    |
| Single Family Residence | 100% | 90% | 100% | 100% | 100% | 90% | 67% | 88% | 78% | 89% | 82% | 100% | 100% |

## Average Sales Price

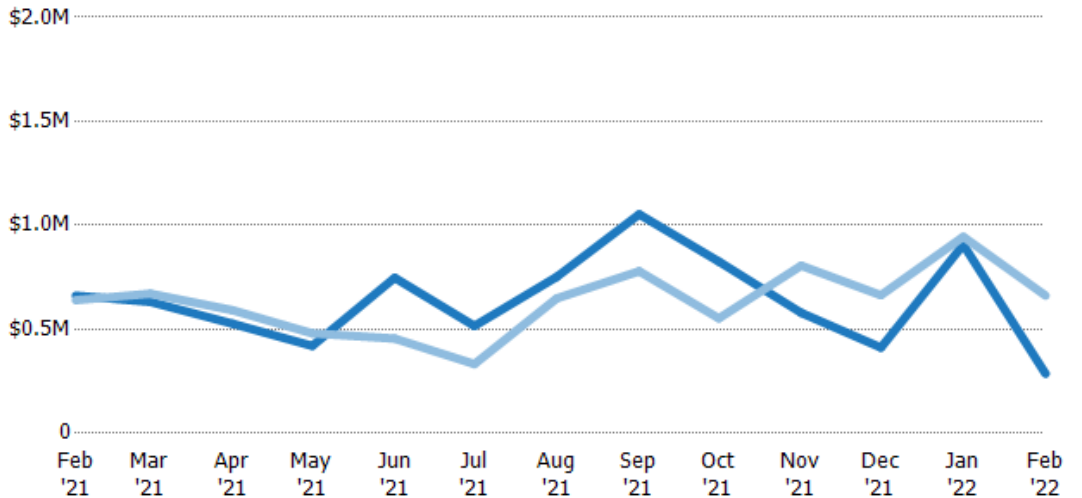
The average sales price of the residential properties sold each month.

**Filters Used**

ZIP: South Woodstock, VT 05071,  
Woodstock, VT 05091

Property Type:  
Condo/Townhouse/Apt., Single  
Family

| Month/Year | Price  | % Chg. |
|------------|--------|--------|
| Feb '22    | \$286K | -56.8% |
| Feb '21    | \$662K | 3.4%   |
| Feb '20    | \$640K | 40.6%  |



|                                |        |        |        |        |        |        |        |         |        |        |        |        |        |
|--------------------------------|--------|--------|--------|--------|--------|--------|--------|---------|--------|--------|--------|--------|--------|
| Current Year                   | \$662K | \$632K | \$527K | \$420K | \$748K | \$516K | \$752K | \$1.05M | \$826K | \$579K | \$412K | \$907K | \$286K |
| Prior Year                     | \$640K | \$671K | \$592K | \$480K | \$455K | \$333K | \$649K | \$779K  | \$553K | \$806K | \$664K | \$945K | \$662K |
| Percent Change from Prior Year | 3%     | -6%    | -11%   | -13%   | 64%    | 55%    | 16%    | 35%     | 49%    | -28%   | -38%   | -4%    | -57%   |

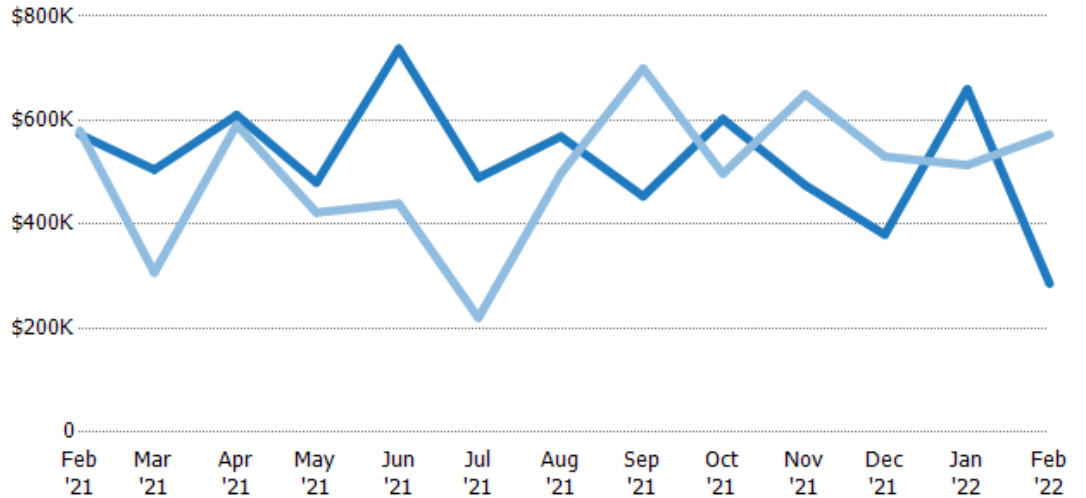
## Median Sales Price

The median sales price of the residential properties sold each month.

### Filters Used

ZIP: South Woodstock, VT 05071,  
Woodstock, VT 05091  
Property Type:  
Condo/Townhouse/Apt., Single  
Family

| Month/<br>Year | Price  | % Chg. |
|----------------|--------|--------|
| Feb '22        | \$286K | -50.1% |
| Feb '21        | \$573K | -1.3%  |
| Feb '20        | \$580K | 27.1%  |



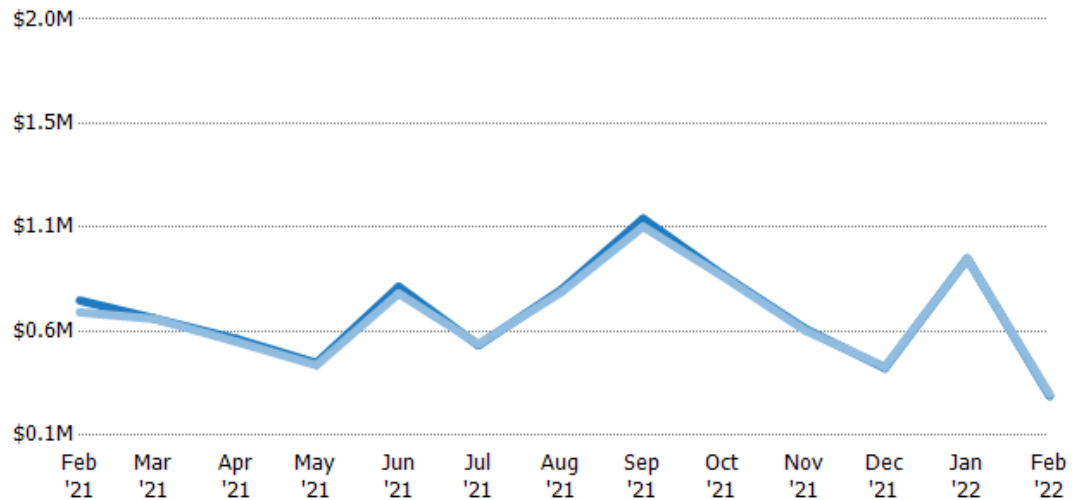
|                                |        |        |        |        |        |        |        |        |        |        |        |        |        |
|--------------------------------|--------|--------|--------|--------|--------|--------|--------|--------|--------|--------|--------|--------|--------|
| Current Year                   | \$573K | \$505K | \$610K | \$480K | \$738K | \$490K | \$569K | \$454K | \$603K | \$475K | \$380K | \$660K | \$286K |
| Prior Year                     | \$580K | \$307K | \$592K | \$423K | \$440K | \$220K | \$498K | \$700K | \$497K | \$650K | \$530K | \$514K | \$573K |
| Percent Change from Prior Year | -1%    | 64%    | 3%     | 14%    | 68%    | 123%   | 14%    | -35%   | 21%    | -27%   | -28%   | 28%    | -50%   |

## Average Sales Price vs Average Listing Price

The average sales price as a percentage of the average listing price for properties sold each month.

### Filters Used

ZIP: South Woodstock, VT 05071,  
Woodstock, VT 05091  
Property Type:  
Condo/Townhouse/Apt., Single  
Family



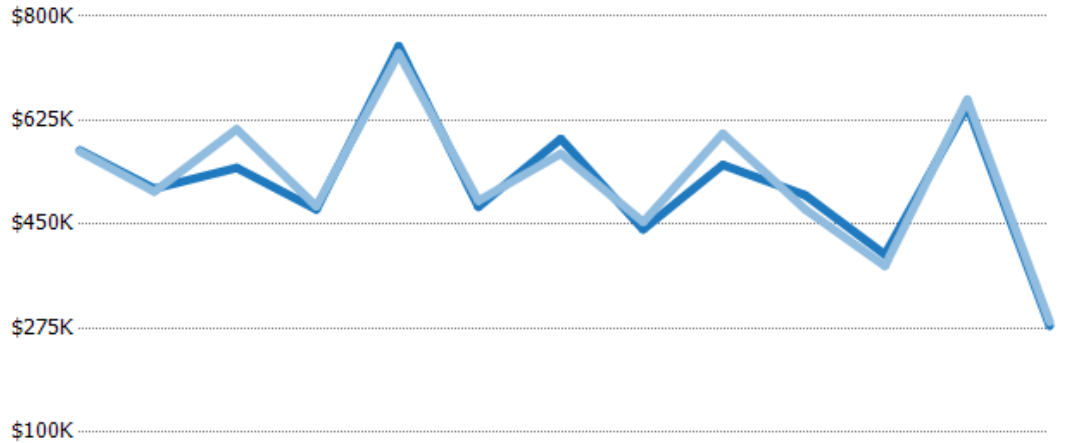
|  |        |        |        |        |        |        |        |         |        |        |        |        |        |
|--|--------|--------|--------|--------|--------|--------|--------|---------|--------|--------|--------|--------|--------|
| Avg List Price                           | \$715K | \$633K | \$540K | \$430K | \$779K | \$512K | \$762K | \$1.09M | \$832K | \$586K | \$407K | \$907K | \$279K |
| Avg Sales Price                          | \$662K | \$632K | \$527K | \$420K | \$748K | \$516K | \$752K | \$1.05M | \$826K | \$579K | \$412K | \$907K | \$286K |
| Avg Sales Price as a % of Avg List Price | 93%    | 100%   | 98%    | 98%    | 96%    | 101%   | 99%    | 97%     | 99%    | 99%    | 101%   | 100%   | 102%   |

## Median Sales Price vs Median Listing Price

The median sales price as a percentage of the median listing price for properties sold each month.

### Filters Used

ZIP: South Woodstock, VT 05071,  
Woodstock, VT 05091  
Property Type:  
Condo/Townhouse/Apt., Single  
Family



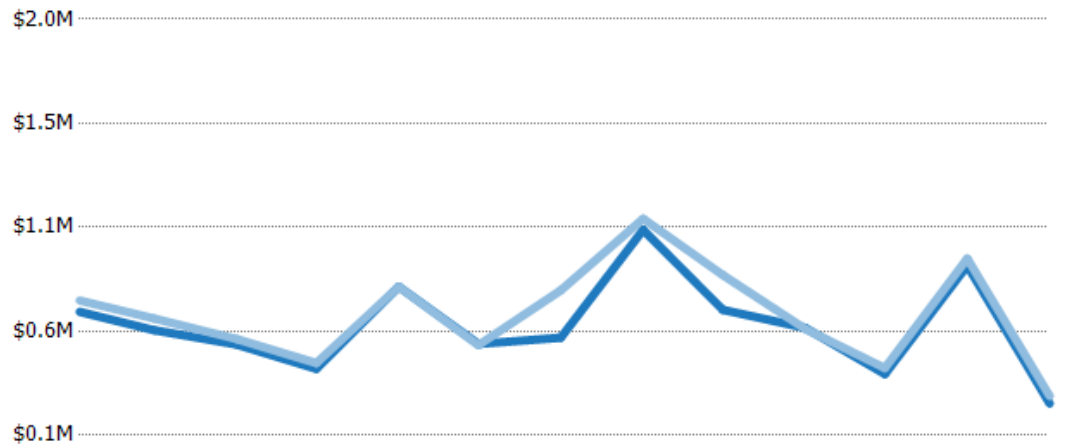
|  | Feb '21 | Mar '21 | Apr '21 | May '21 | Jun '21 | Jul '21 | Aug '21 | Sep '21 | Oct '21 | Nov '21 | Dec '21 | Jan '22 | Feb '22 |
|--|---------|---------|---------|---------|---------|---------|---------|---------|---------|---------|---------|---------|---------|
| Median List Price                        | \$575K  | \$510K  | \$545K  | \$475K  | \$750K  | \$480K  | \$594K  | \$441K  | \$550K  | \$499K  | \$399K  | \$649K  | \$279K  |
| Median Sales Price                       | \$573K  | \$505K  | \$610K  | \$480K  | \$738K  | \$490K  | \$569K  | \$454K  | \$603K  | \$475K  | \$380K  | \$660K  | \$286K  |
| Med Sales Price as a % of Med List Price | 100%    | 99%     | 112%    | 101%    | 98%     | 102%    | 96%     | 103%    | 110%    | 95%     | 95%     | 102%    | 102%    |

## Average Sales Price vs Average Est Value

The average sales price as a percentage of the average AVM or RVM® valuation estimate for properties sold each month.

### Filters Used

ZIP: South Woodstock, VT 05071,  
Woodstock, VT 05091  
Property Type:  
Condo/Townhouse/Apt., Single  
Family



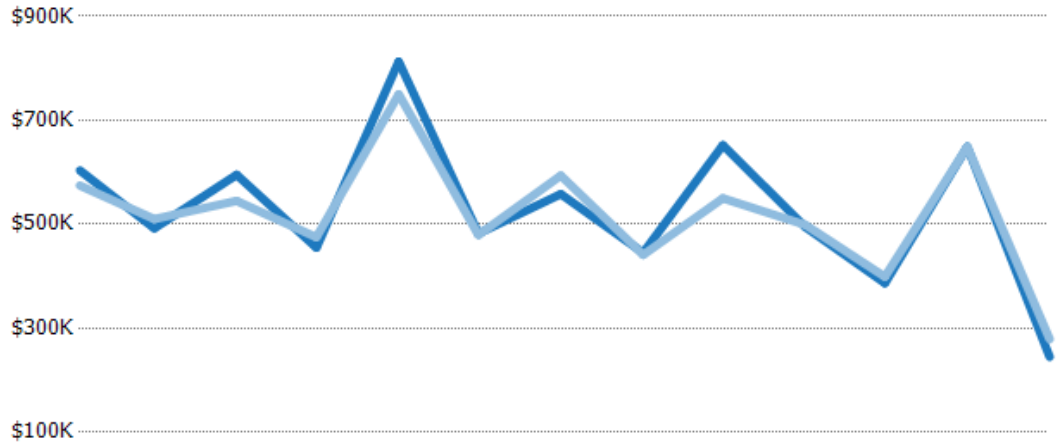
|   | Feb '21 | Mar '21 | Apr '21 | May '21 | Jun '21 | Jul '21 | Aug '21 | Sep '21 | Oct '21 | Nov '21 | Dec '21 | Jan '22 | Feb '22 |
|---|---------|---------|---------|---------|---------|---------|---------|---------|---------|---------|---------|---------|---------|
| Avg Est Value                           | \$664K  | \$580K  | \$514K  | \$404K  | \$779K  | \$517K  | \$546K  | \$1.04M | \$673K  | \$591K  | \$380K  | \$875K  | \$245K  |
| Avg Sales Price                         | \$715K  | \$633K  | \$540K  | \$430K  | \$779K  | \$512K  | \$762K  | \$1.09M | \$832K  | \$586K  | \$407K  | \$907K  | \$279K  |
| Avg Sales Price as a % of Avg Est Value | 108%    | 109%    | 105%    | 106%    | 100%    | 99%     | 140%    | 105%    | 124%    | 99%     | 107%    | 104%    | 114%    |

## Median Sales Price vs Median Est Value

The median sales price as a percent of the median AVM or RVM® valuation estimate for properties sold each month.

### Filters Used

ZIP: South Woodstock, VT 05071,  
Woodstock, VT 05091  
Property Type:  
Condo/Townhouse/Apt., Single  
Family



|   | Feb '21 | Mar '21 | Apr '21 | May '21 | Jun '21 | Jul '21 | Aug '21 | Sep '21 | Oct '21 | Nov '21 | Dec '21 | Jan '22 | Feb '22 |
|---|---------|---------|---------|---------|---------|---------|---------|---------|---------|---------|---------|---------|---------|
| Median Est Value                        | \$604K  | \$492K  | \$595K  | \$455K  | \$813K  | \$482K  | \$558K  | \$445K  | \$652K  | \$495K  | \$387K  | \$649K  | \$245K  |
| Median Sales Price                      | \$575K  | \$510K  | \$545K  | \$475K  | \$750K  | \$480K  | \$594K  | \$441K  | \$550K  | \$499K  | \$399K  | \$649K  | \$279K  |
| Med Sales Price as a % of Med Est Value | 95%     | 104%    | 92%     | 104%    | 92%     | 99%     | 106%    | 99%     | 84%     | 101%    | 103%    | 100%    | 114%    |