

## Summary of Key Listing and Sales Metrics

A summary of the key metrics selected to be included in the report. MLS sources where licensed.

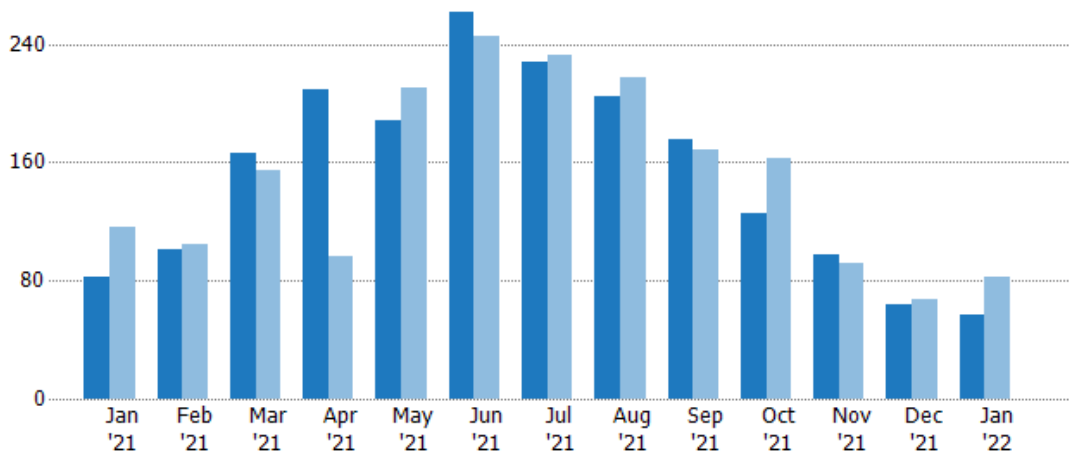
Key Metrics	Jan 2022	Jan 2021	+ / -	YTD 2022	YTD 2021	+ / -
<b>Listing Activity Charts Metrics</b>						
New Listing Count	57	82	-30.5%	1,959	1,949	+0.5%
New Listing Volume	\$25,253,376	\$34,911,695	-27.7%	\$924,863,867	\$816,758,159	+13.2%
Active Listing Count	102	186	-45.2%	N/A	N/A	
Active Listing Volume	\$58,934,705	\$103,624,763	-43.1%	N/A	N/A	
Average Listing Price	\$577,791	\$557,122	+3.7%	\$566,123	\$520,264	+8.8%
Median Listing Price	\$557,000	\$446,698	+24.7%	\$475,093	\$423,599	+12.2%
Median Days in RPR	136	143.5	-5.2%	86.93	92.84	-6.4%
Months of Inventory	0.7	1.2	-41.4%	1.1	1.7	-34.4%
Absorption Rate	142.16%	83.33%	+58.8%	90.2%	59.14%	+31.1%
<b>Sales Activity Charts Metrics</b>						
New Pending Sales Count	47	106	-55.7%	1,935	2,100	-7.9%
New Pending Sales Volume	\$19,925,858	\$44,267,689	-55%	\$872,970,647	\$840,915,543	+3.8%
Pending Sales Count	92	171	-46.2%	N/A	N/A	
Pending Sales Volume	\$44,968,561	\$74,761,784	-39.9%	N/A	N/A	
Closed Sales Count	92	92	+/-	1,894	1,838	+3%
Closed Sales Volume	\$42,893,977	\$35,426,843	+21.1%	\$866,558,899	\$727,845,672	+19.1%
Average Sales Price	\$466,239	\$385,074	+21.1%	\$457,528	\$395,999	+15.5%
Median Sales Price	\$375,000	\$356,250	+5.3%	\$395,575	\$350,109	+13%

## New Listings

The number of new residential listings that were added each month.

### Filters Used

State: VT  
 County: Chittenden County, Vermont  
 Property Type:  
 Condo/Townhouse/Apt., Single Family



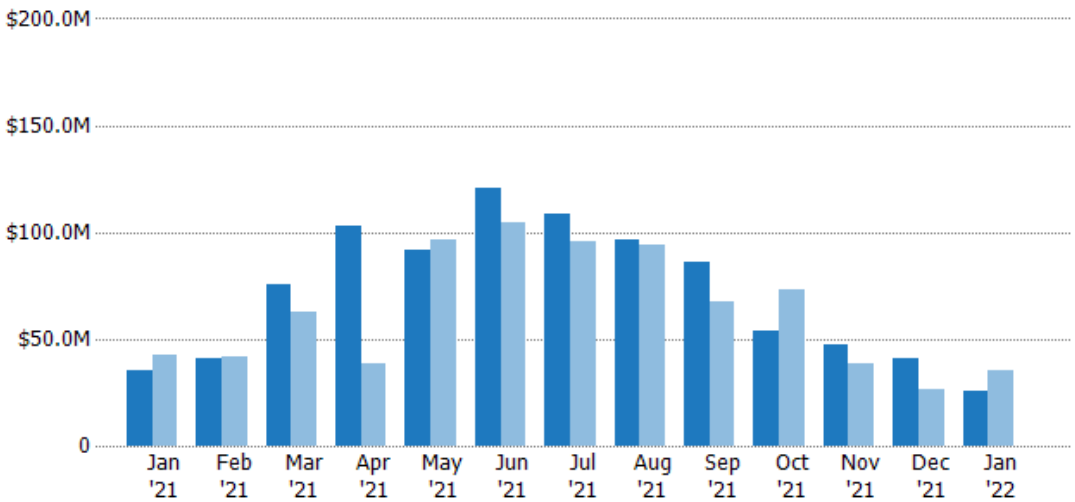
	Jan '21	Feb '21	Mar '21	Apr '21	May '21	Jun '21	Jul '21	Aug '21	Sep '21	Oct '21	Nov '21	Dec '21	Jan '22
Current Year	82	101	166	209	188	262	228	205	175	125	97	64	57
Prior Year	116	105	155	96	210	245	233	217	168	163	92	67	82
Percent Change from Prior Year	-29%	-4%	7%	118%	-10%	7%	-2%	-6%	4%	-23%	5%	-4%	-30%

## New Listing Volume

The sum of the listing price of residential listings that were added each month.

### Filters Used

State: VT  
 County: Chittenden County, Vermont  
 Property Type:  
 Condo/Townhouse/Apt., Single Family



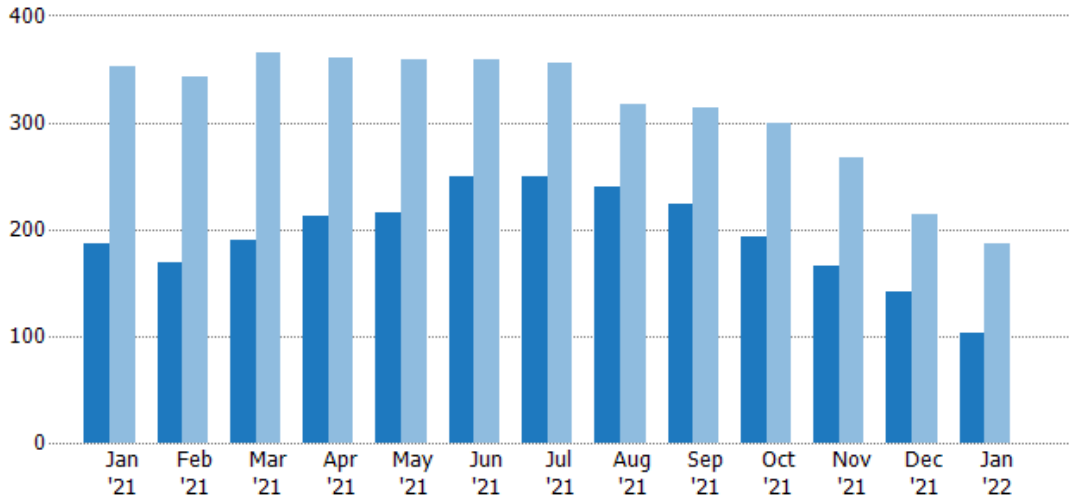
	Jan '21	Feb '21	Mar '21	Apr '21	May '21	Jun '21	Jul '21	Aug '21	Sep '21	Oct '21	Nov '21	Dec '21	Jan '22
Current Year	\$34.9M	\$41.1M	\$75.6M	\$103M	\$91.3M	\$121M	\$108M	\$96.4M	\$86.1M	\$54M	\$47.4M	\$40.7M	\$25.3M
Prior Year	\$42.2M	\$41.9M	\$62.9M	\$38.2M	\$96.9M	\$105M	\$96M	\$94M	\$67.4M	\$73.2M	\$38.3M	\$26.2M	\$34.9M
Percent Change from Prior Year	-17%	-2%	20%	169%	-6%	16%	13%	3%	28%	-26%	24%	55%	-28%

## Active Listings

The number of active residential listings at the end of each month.

### Filters Used

State: VT  
 County: Chittenden County, Vermont  
 Property Type:  
 Condo/Townhouse/Apt., Single Family



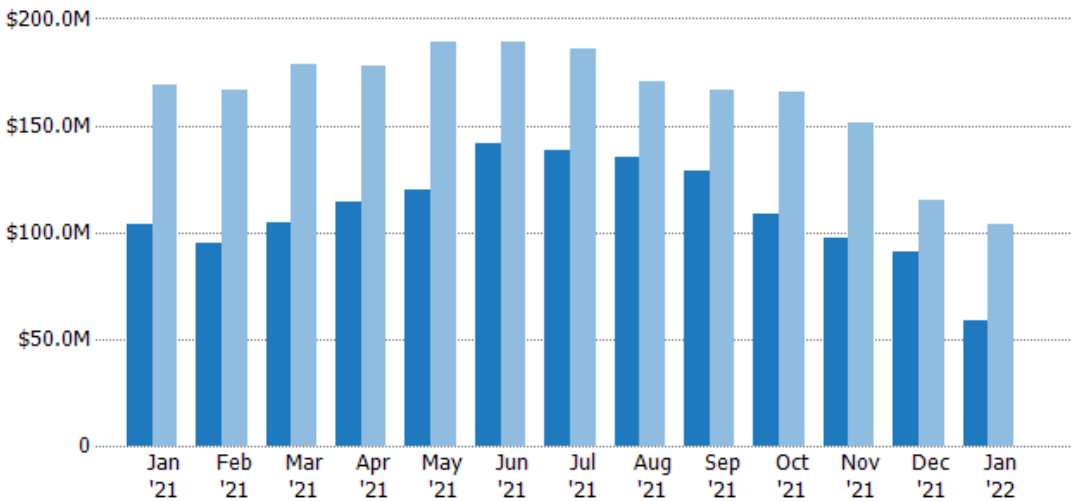
	Jan '21	Feb '21	Mar '21	Apr '21	May '21	Jun '21	Jul '21	Aug '21	Sep '21	Oct '21	Nov '21	Dec '21	Jan '22
Current Year	186	169	190	212	216	249	249	240	224	193	166	141	102
Prior Year	353	342	365	360	359	359	356	317	314	300	267	214	186
Percent Change from Prior Year	-47%	-51%	-48%	-41%	-40%	-31%	-30%	-24%	-29%	-36%	-38%	-34%	-45%

## Active Listing Volume

The sum of the listing price of active residential listings at the end of each month.

### Filters Used

State: VT  
 County: Chittenden County, Vermont  
 Property Type:  
 Condo/Townhouse/Apt., Single Family



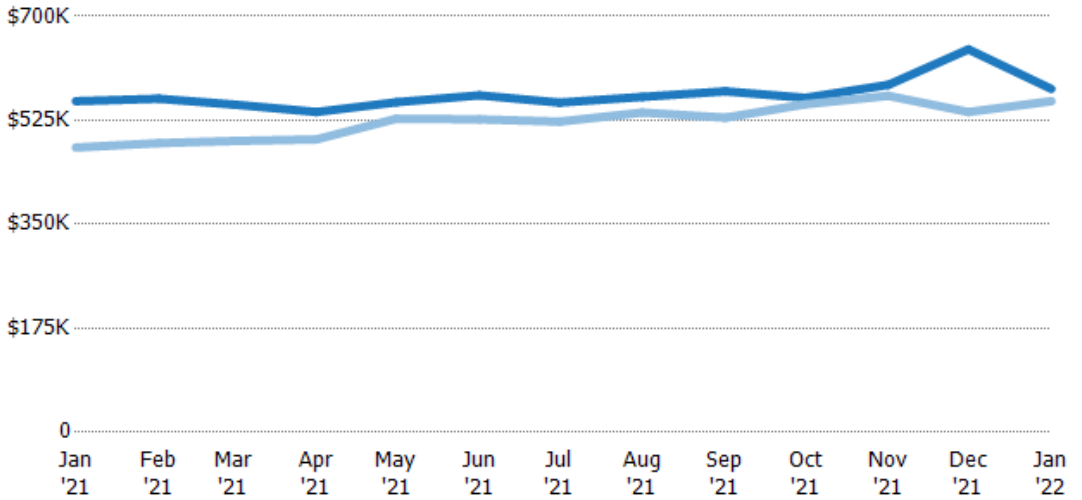
	Jan '21	Feb '21	Mar '21	Apr '21	May '21	Jun '21	Jul '21	Aug '21	Sep '21	Oct '21	Nov '21	Dec '21	Jan '22
Current Year	\$104M	\$94.9M	\$105M	\$114M	\$120M	\$141M	\$138M	\$135M	\$129M	\$109M	\$97M	\$90.9M	\$58.9M
Prior Year	\$169M	\$166M	\$179M	\$177M	\$189M	\$189M	\$186M	\$171M	\$166M	\$166M	\$151M	\$115M	\$104M
Percent Change from Prior Year	-39%	-43%	-41%	-36%	-37%	-25%	-26%	-21%	-23%	-34%	-36%	-21%	-43%

## Average Listing Price

The average listing price of active residential listings at the end of each month.

### Filters Used

State: VT  
 County: Chittenden County, Vermont  
 Property Type:  
 Condo/Townhouse/Apt., Single Family



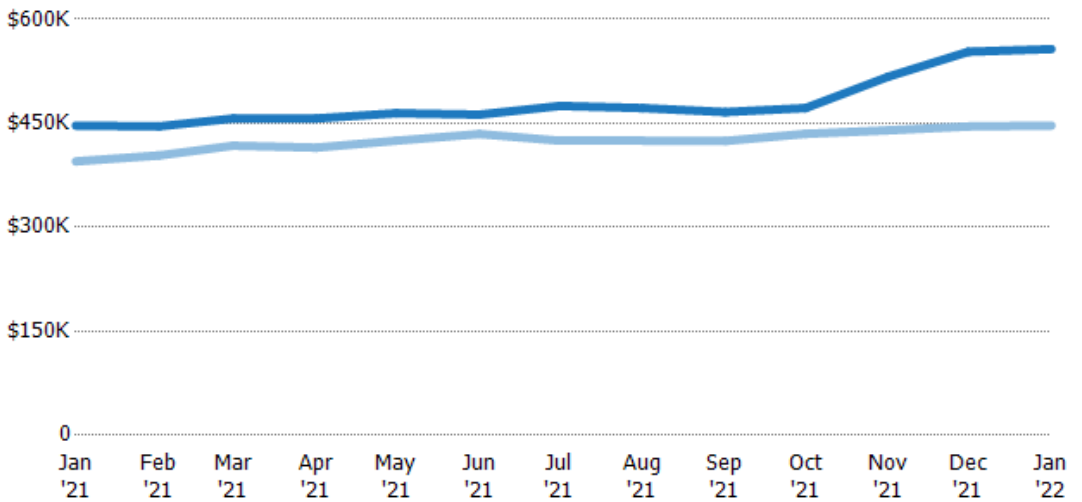
	Jan '21	Feb '21	Mar '21	Apr '21	May '21	Jun '21	Jul '21	Aug '21	Sep '21	Oct '21	Nov '21	Dec '21	Jan '22
Current Year	\$557K	\$561K	\$551K	\$539K	\$555K	\$567K	\$555K	\$564K	\$574K	\$563K	\$585K	\$644K	\$578K
Prior Year	\$479K	\$487K	\$490K	\$493K	\$528K	\$526K	\$523K	\$538K	\$529K	\$552K	\$566K	\$539K	\$557K
Percent Change from Prior Year	16%	15%	12%	9%	5%	8%	6%	5%	8%	2%	3%	20%	4%

## Median Listing Price

The median listing price of active residential listings at the end of each month.

### Filters Used

State: VT  
 County: Chittenden County, Vermont  
 Property Type:  
 Condo/Townhouse/Apt., Single Family



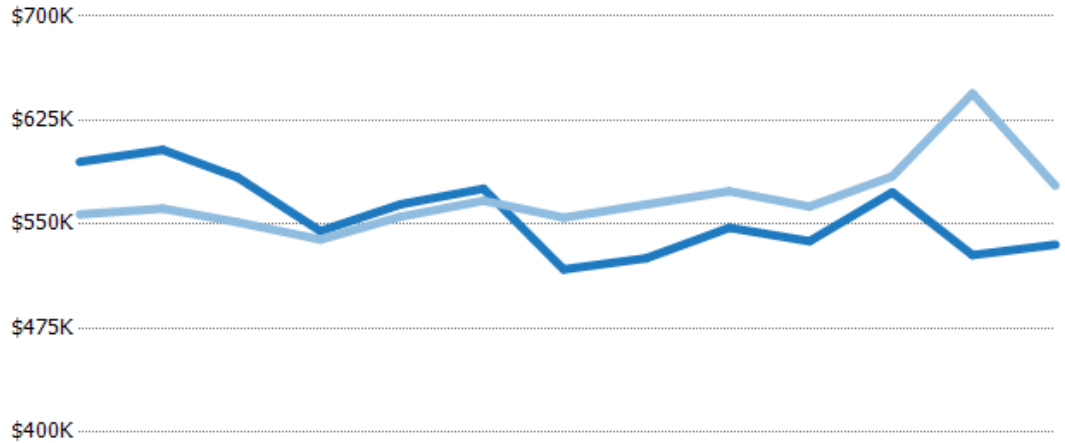
	Jan '21	Feb '21	Mar '21	Apr '21	May '21	Jun '21	Jul '21	Aug '21	Sep '21	Oct '21	Nov '21	Dec '21	Jan '22
Current Year	\$447K	\$445K	\$457K	\$457K	\$464K	\$463K	\$475K	\$472K	\$466K	\$472K	\$517K	\$553K	\$557K
Prior Year	\$395K	\$404K	\$418K	\$415K	\$425K	\$435K	\$425K	\$425K	\$424K	\$435K	\$440K	\$445K	\$447K
Percent Change from Prior Year	13%	10%	9%	10%	9%	6%	12%	11%	10%	9%	18%	24%	25%

## Average Listing Price vs Average Est Value

The average listing price as a percentage of the average AVM or RVM® valuation estimate for active listings each month.

**Filters Used**

State: VT  
 County: Chittenden County, Vermont  
 Property Type:  
 Condo/Townhouse/Apt., Single Family



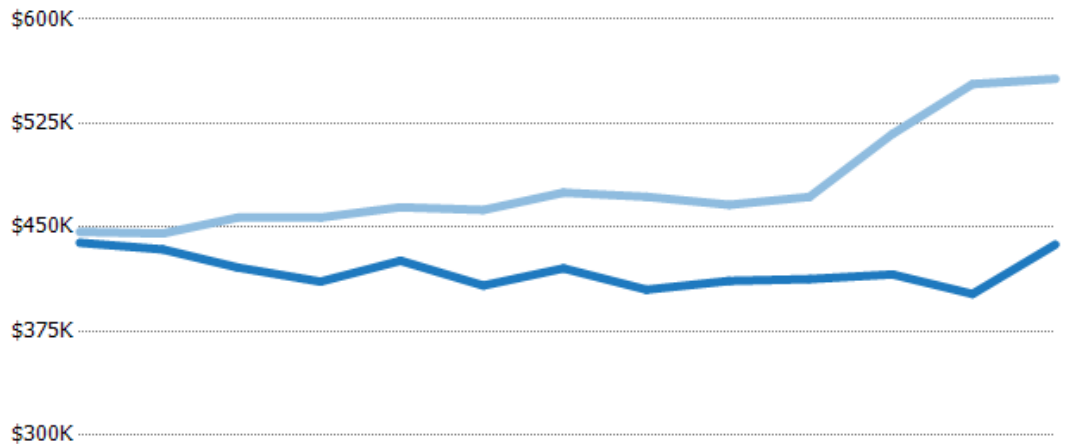
	Jan '21	Feb '21	Mar '21	Apr '21	May '21	Jun '21	Jul '21	Aug '21	Sep '21	Oct '21	Nov '21	Dec '21	Jan '22
Avg Est Value	\$595K	\$604K	\$584K	\$545K	\$564K	\$576K	\$517K	\$526K	\$547K	\$538K	\$573K	\$528K	\$535K
Avg Listing Price	\$557K	\$561K	\$551K	\$539K	\$555K	\$567K	\$555K	\$564K	\$574K	\$563K	\$585K	\$644K	\$578K
Avg Listing Price as a % of Avg Est Value	94%	93%	94%	99%	98%	98%	107%	107%	105%	105%	102%	122%	108%

## Median Listing Price vs Median Est Value

The median listing price as a percentage of the median AVM or RVM® valuation estimate for active listings each month.

**Filters Used**

State: VT  
 County: Chittenden County, Vermont  
 Property Type:  
 Condo/Townhouse/Apt., Single Family



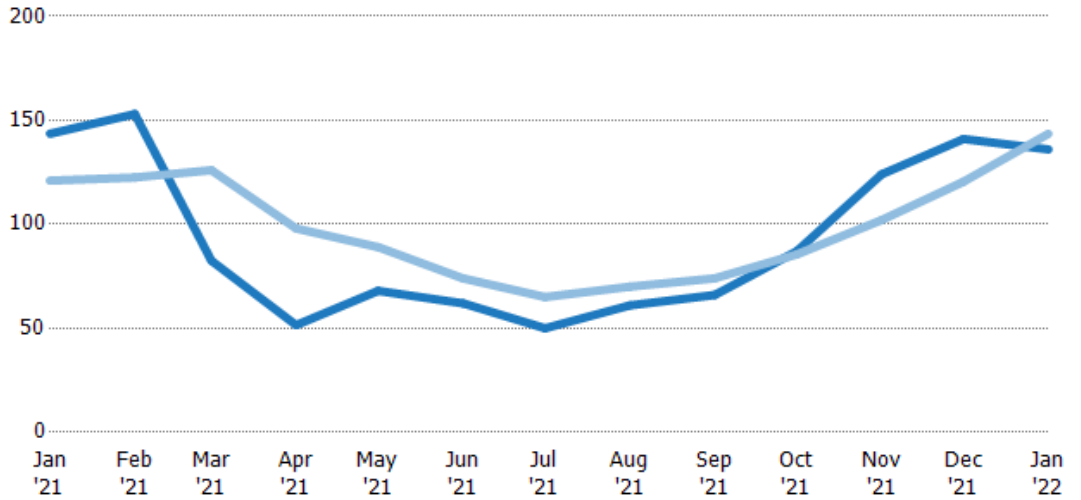
	Jan '21	Feb '21	Mar '21	Apr '21	May '21	Jun '21	Jul '21	Aug '21	Sep '21	Oct '21	Nov '21	Dec '21	Jan '22
Median Est Value	\$439K	\$434K	\$421K	\$411K	\$426K	\$408K	\$420K	\$405K	\$411K	\$413K	\$416K	\$402K	\$438K
Median Listing Price	\$447K	\$445K	\$457K	\$457K	\$464K	\$463K	\$475K	\$472K	\$466K	\$472K	\$517K	\$553K	\$557K
Med Listing Price as a % of Med Est Value	102%	103%	109%	111%	109%	113%	113%	117%	113%	114%	124%	138%	127%

## Median Days in RPR

The median number of days between when residential properties are first displayed as active listings in RPR and when accepted offers have been noted in RPR.

### Filters Used

State: VT  
 County: Chittenden County, Vermont  
 Property Type:  
 Condo/Townhouse/Apt., Single Family



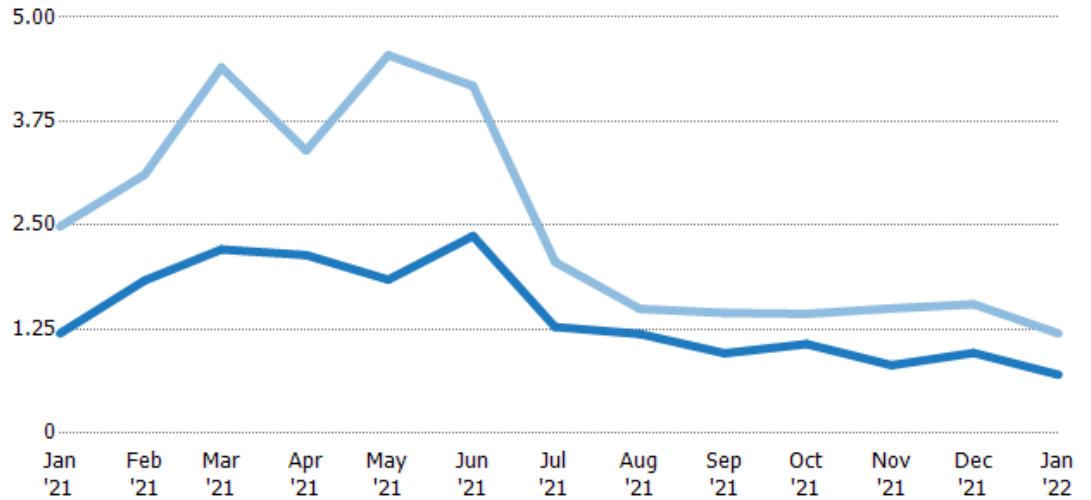
	Jan '21	Feb '21	Mar '21	Apr '21	May '21	Jun '21	Jul '21	Aug '21	Sep '21	Oct '21	Nov '21	Dec '21	Jan '22
Current Year	144	153	82.5	51.5	68	62	50	61	66	87	124	141	136
Prior Year	121	123	126	98	89	74	65	70	74	85.5	102	121	144
Percent Change from Prior Year	19%	25%	-35%	-47%	-24%	-16%	-23%	-13%	-11%	2%	22%	17%	-5%

## Months of Inventory

The number of months it would take to exhaust active listings at the current sales rate.

### Filters Used

State: VT  
 County: Chittenden County, Vermont  
 Property Type:  
 Condo/Townhouse/Apt., Single Family



	Jan '21	Feb '21	Mar '21	Apr '21	May '21	Jun '21	Jul '21	Aug '21	Sep '21	Oct '21	Nov '21	Dec '21	Jan '22
Current Year	1.2	1.84	2.21	2.14	1.85	2.37	1.28	1.19	0	1.07	0	0	0
Prior Year	2.49	3.11	4.4	3.4	4.54	4.17	2.06	1.5	1.45	1.44	1.5	1.55	1.2
Percent Change from Prior Year	-52%	-41%	-50%	-37%	-59%	-43%	-38%	-20%	-34%	-25%	-45%	-38%	-41%

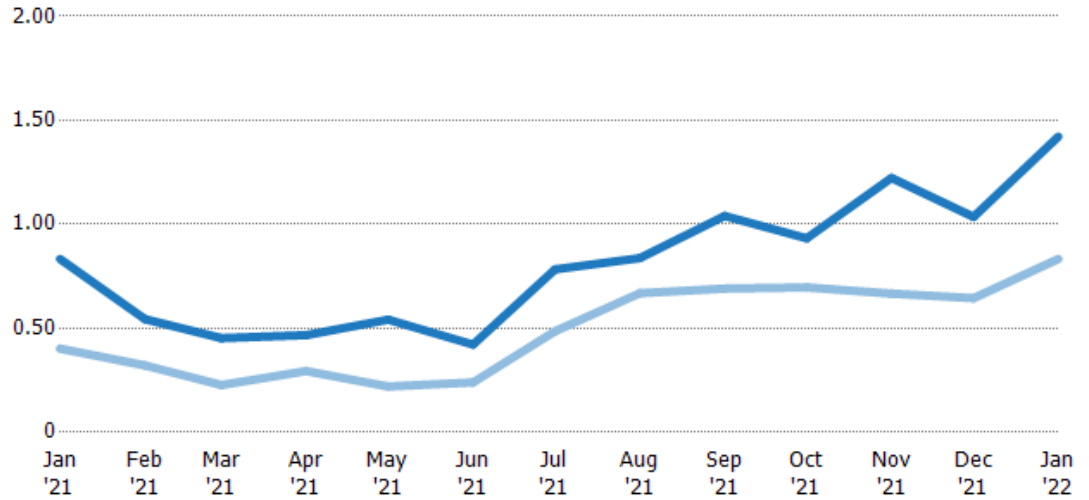
## Absorption Rate

The percentage of inventory sold per month.

### Filters Used

State: VT  
 County: Chittenden County, Vermont  
 Property Type:  
 Condo/Townhouse/Apt., Single  
 Family

Month/ Year	Rate	Chg.
Jan '22	142%	-58.8%
Jan '21	83%	-43.1%
Jan '20	40%	-28%



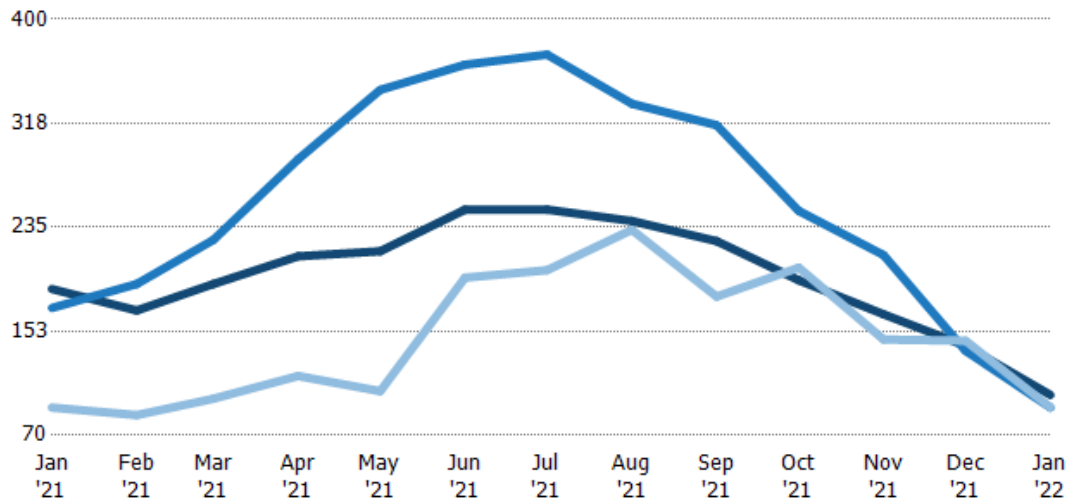
Current Year	83%	54%	45%	47%	54%	42%	78%	84%	104%	93%	122%	104%	142%
Prior Year	40%	32%	23%	29%	22%	24%	49%	67%	69%	70%	67%	64%	83%
Change from Prior Year	-43%	-22%	-23%	-17%	-32%	-18%	-30%	-17%	-35%	-24%	-56%	-39%	-59%

## Active/Pending/Sold Units

The number of residential properties that were Active, Pending and Sold each month.

### Filters Used

State: VT  
 County: Chittenden County, Vermont  
 Property Type:  
 Condo/Townhouse/Apt., Single  
 Family



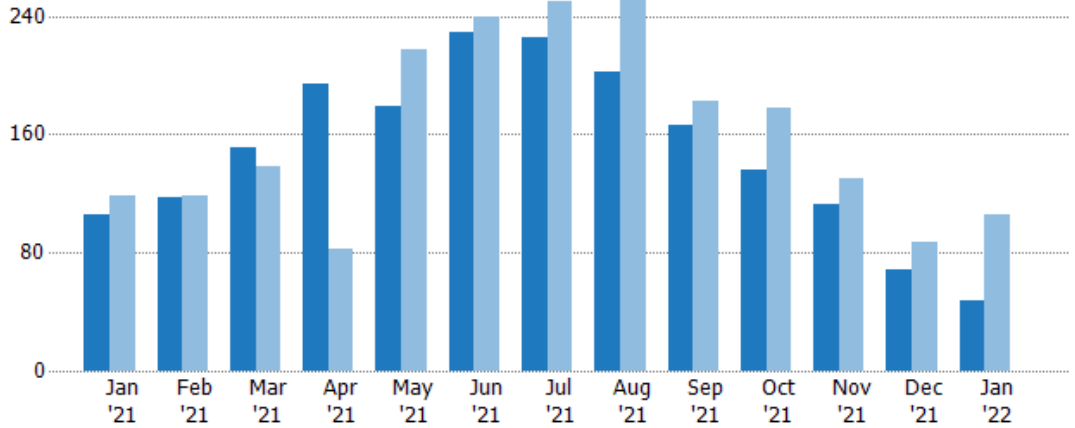
Active	186	169	190	212	216	249	249	240	224	193	166	141	102
Pending	171	190	225	289	344	364	372	333	316	248	213	137	92
Sold	92	86	99	117	105	195	201	233	180	203	146	145	92

## New Pending Sales

The number of residential properties with accepted offers that were added each month.

### Filters Used

State: VT  
 County: Chittenden County, Vermont  
 Property Type:  
 Condo/Townhouse/Apt., Single Family



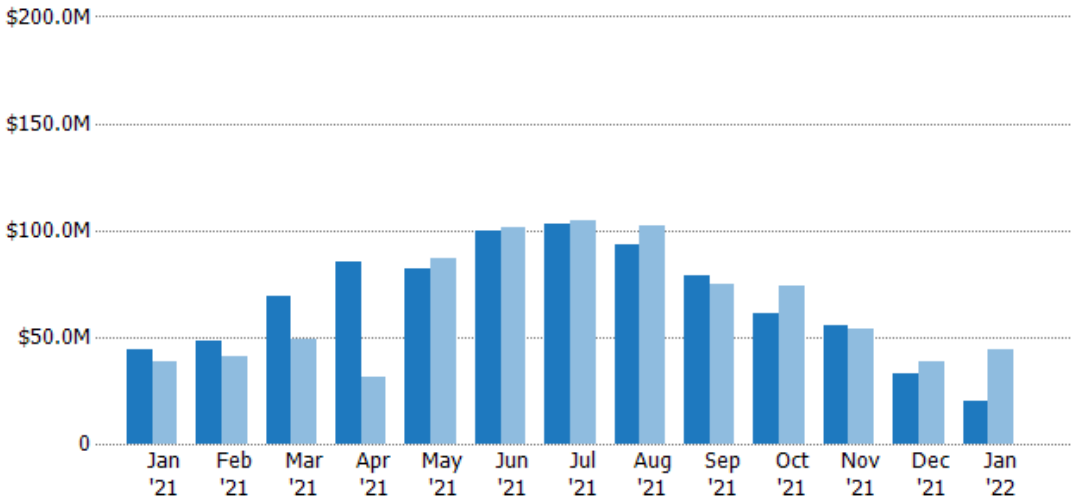
	Jan '21	Feb '21	Mar '21	Apr '21	May '21	Jun '21	Jul '21	Aug '21	Sep '21	Oct '21	Nov '21	Dec '21	Jan '22
Current Year	106	117	151	194	179	229	226	202	166	136	113	69	47
Prior Year	118	119	138	82	217	239	250	254	182	178	130	87	106
Percent Change from Prior Year	-10%	-2%	9%	137%	-18%	-4%	-10%	-20%	-9%	-24%	-13%	-21%	-56%

## New Pending Sales Volume

The sum of the sales price of residential properties with accepted offers that were added each month.

### Filters Used

State: VT  
 County: Chittenden County, Vermont  
 Property Type:  
 Condo/Townhouse/Apt., Single Family



	Jan '21	Feb '21	Mar '21	Apr '21	May '21	Jun '21	Jul '21	Aug '21	Sep '21	Oct '21	Nov '21	Dec '21	Jan '22
Current Year	\$44.3M	\$48M	\$69.2M	\$85.5M	\$81.8M	\$99.4M	\$103M	\$93.4M	\$78.9M	\$61.1M	\$55.5M	\$33.1M	\$19.9M
Prior Year	\$38.8M	\$41.3M	\$48.9M	\$31.6M	\$86.5M	\$101M	\$105M	\$102M	\$74.9M	\$74M	\$53.9M	\$38.9M	\$44.3M
Percent Change from Prior Year	14%	16%	42%	171%	-5%	-2%	-2%	-8%	5%	-17%	3%	-15%	-55%

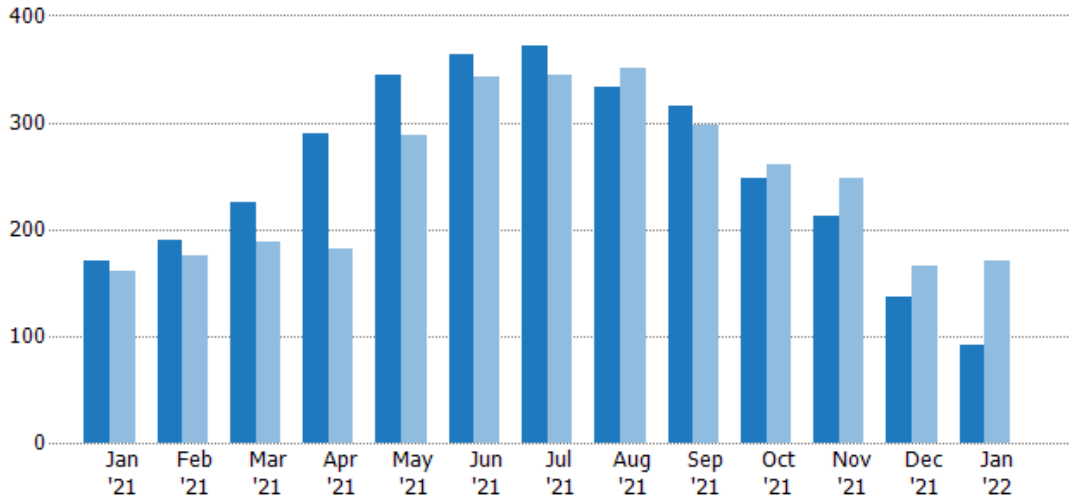


## Pending Sales

The number of residential properties with accepted offers that were available at the end each month.

### Filters Used

State: VT  
 County: Chittenden County, Vermont  
 Property Type:  
 Condo/Townhouse/Apt., Single Family



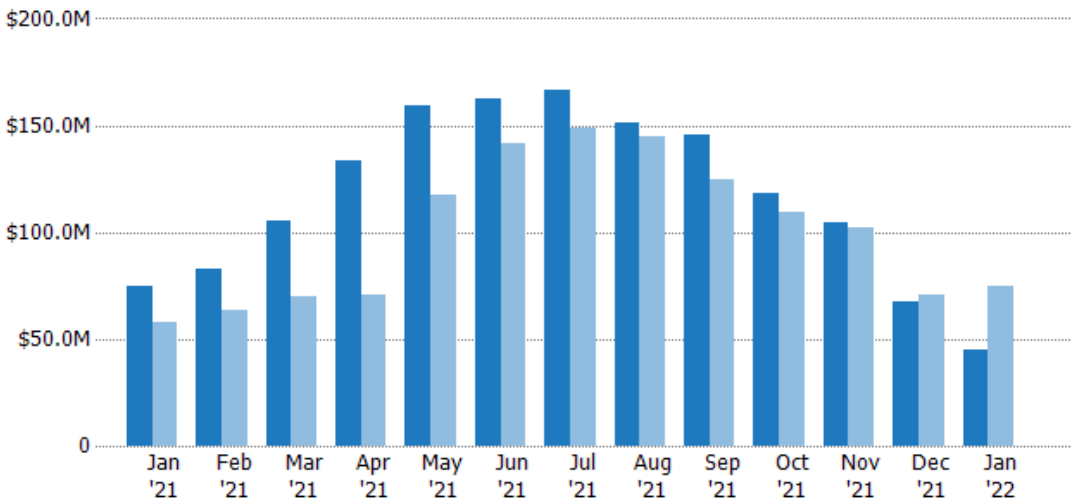
	Jan '21	Feb '21	Mar '21	Apr '21	May '21	Jun '21	Jul '21	Aug '21	Sep '21	Oct '21	Nov '21	Dec '21	Jan '22
Current Year	171	190	225	289	344	364	372	333	316	248	213	137	92
Prior Year	160	175	188	182	288	342	345	350	297	261	247	166	171
Percent Change from Prior Year	7%	9%	20%	59%	19%	6%	8%	-5%	6%	-5%	-14%	-17%	-46%

## Pending Sales Volume

The sum of the sales price of residential properties with accepted offers that were available at the end of each month.

### Filters Used

State: VT  
 County: Chittenden County, Vermont  
 Property Type:  
 Condo/Townhouse/Apt., Single Family



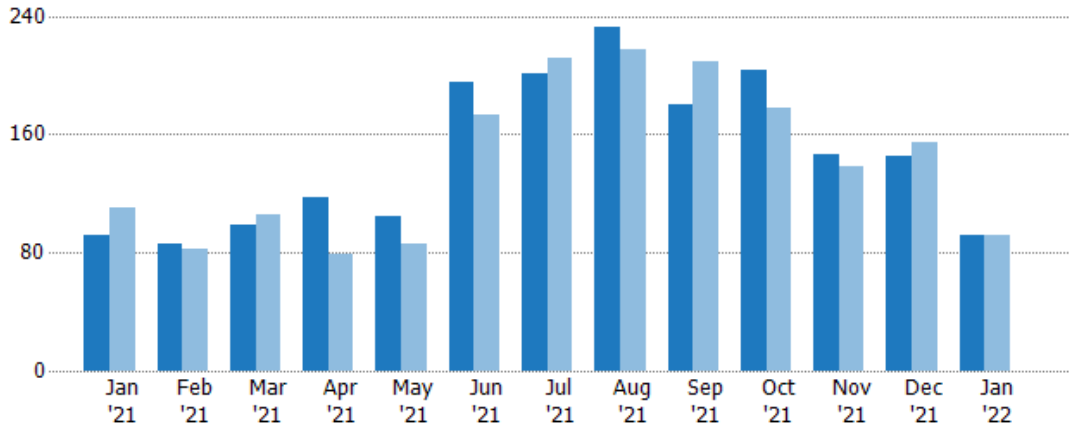
	Jan '21	Feb '21	Mar '21	Apr '21	May '21	Jun '21	Jul '21	Aug '21	Sep '21	Oct '21	Nov '21	Dec '21	Jan '22
Current Year	\$74.8M	\$82.5M	\$105M	\$134M	\$159M	\$163M	\$166M	\$151M	\$146M	\$118M	\$104M	\$67.7M	\$45M
Prior Year	\$57.6M	\$63.7M	\$70M	\$70.7M	\$117M	\$141M	\$149M	\$145M	\$125M	\$110M	\$102M	\$70.6M	\$74.8M
Percent Change from Prior Year	30%	29%	51%	89%	36%	15%	12%	4%	17%	8%	2%	-4%	-40%

## Closed Sales

The total number of residential properties sold each month.

### Filters Used

State: VT  
 County: Chittenden County, Vermont  
 Property Type:  
 Condo/Townhouse/Apt., Single Family



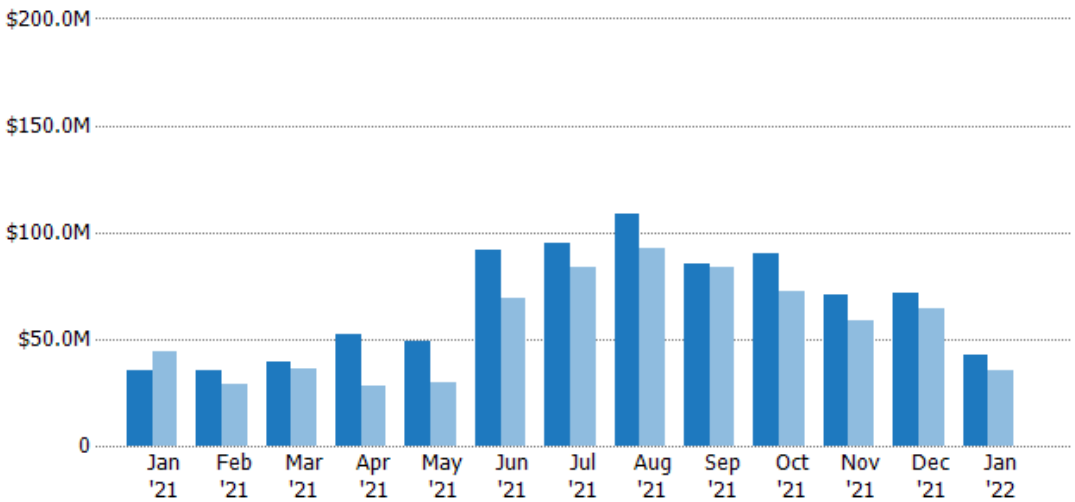
	Jan '21	Feb '21	Mar '21	Apr '21	May '21	Jun '21	Jul '21	Aug '21	Sep '21	Oct '21	Nov '21	Dec '21	Jan '22
Current Year	92	86	99	117	105	195	201	233	180	203	146	145	92
Prior Year	110	83	106	79	86	173	212	217	209	178	138	155	92
Percent Change from Prior Year	-16%	4%	-7%	48%	22%	13%	-5%	7%	-14%	14%	6%	-6%	0%

## Closed Sales Volume

The sum of the sales price of residential properties sold each month.

### Filters Used

State: VT  
 County: Chittenden County, Vermont  
 Property Type:  
 Condo/Townhouse/Apt., Single Family



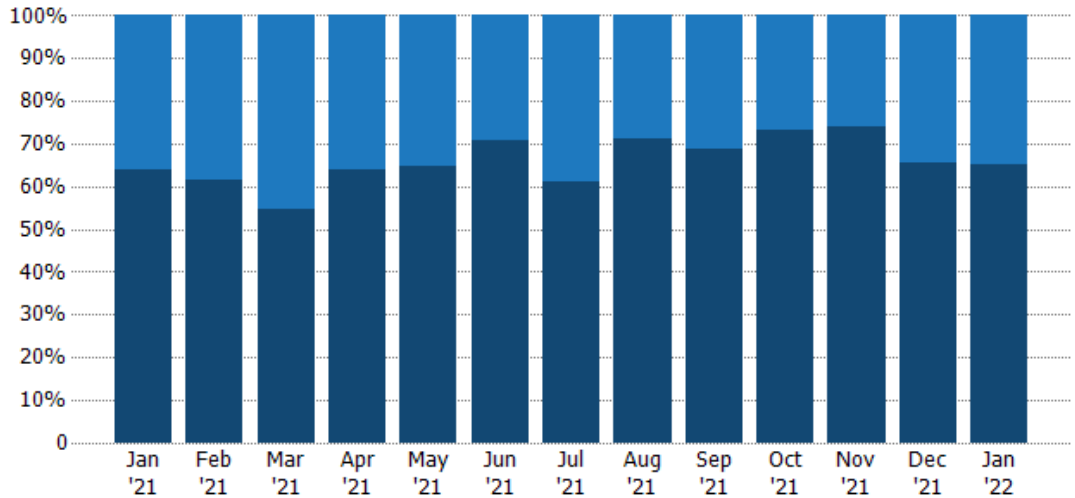
	Jan '21	Feb '21	Mar '21	Apr '21	May '21	Jun '21	Jul '21	Aug '21	Sep '21	Oct '21	Nov '21	Dec '21	Jan '22
Current Year	\$35.4M	\$35.6M	\$39M	\$52M	\$49.2M	\$91.3M	\$94.8M	\$109M	\$85.6M	\$90M	\$70.8M	\$71.3M	\$42.9M
Prior Year	\$44M	\$28.7M	\$36.3M	\$27.7M	\$29.6M	\$69.1M	\$83.9M	\$92.8M	\$83.8M	\$72.7M	\$59M	\$64.5M	\$35.4M
Percent Change from Prior Year	-20%	24%	7%	88%	66%	32%	13%	17%	2%	24%	20%	11%	21%

## Closed Sales by Property Type

The percentage of residential properties sold each month by property type.

**Filters Used**

State: VT  
 County: Chittenden County, Vermont  
 Property Type: Condo/Townhouse/Apt., Single Family



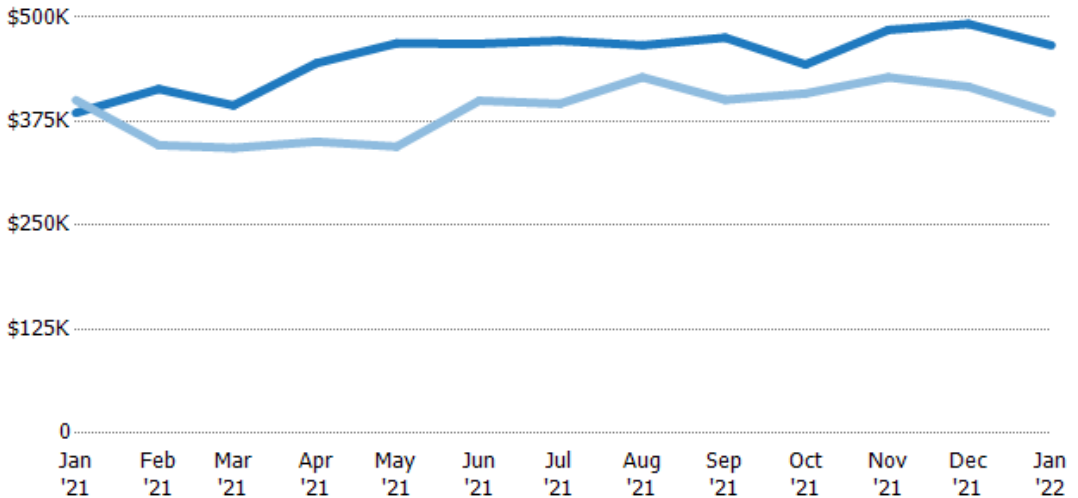
Property Type	Jan '21	Feb '21	Mar '21	Apr '21	May '21	Jun '21	Jul '21	Aug '21	Sep '21	Oct '21	Nov '21	Dec '21	Jan '22
Condo/Townhouse	36%	38%	45%	36%	35%	29%	39%	29%	31%	27%	26%	34%	35%
Single Family Residence	64%	62%	55%	64%	65%	71%	61%	71%	69%	73%	74%	66%	65%

## Average Sales Price

The average sales price of the residential properties sold each month.

**Filters Used**

State: VT  
 County: Chittenden County, Vermont  
 Property Type: Condo/Townhouse/Apt., Single Family



Month/Year	Price	% Chg.
Jan '22	\$466K	21.1%
Jan '21	\$385K	-3.8%
Jan '20	\$400K	-19.1%

Property Type	Jan '21	Feb '21	Mar '21	Apr '21	May '21	Jun '21	Jul '21	Aug '21	Sep '21	Oct '21	Nov '21	Dec '21	Jan '22
Current Year	\$385K	\$414K	\$394K	\$445K	\$469K	\$468K	\$472K	\$466K	\$475K	\$443K	\$485K	\$492K	\$466K
Prior Year	\$400K	\$346K	\$343K	\$350K	\$345K	\$400K	\$396K	\$428K	\$401K	\$408K	\$428K	\$416K	\$385K
Percent Change from Prior Year	-4%	19%	15%	27%	36%	17%	19%	9%	19%	9%	13%	18%	21%

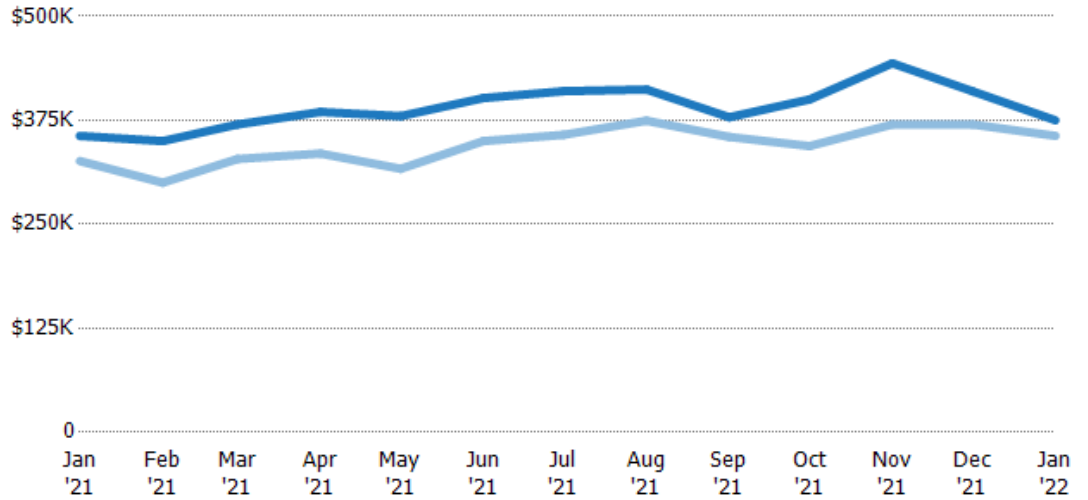
## Median Sales Price

The median sales price of the residential properties sold each month.

### Filters Used

State: VT  
 County: Chittenden County, Vermont  
 Property Type:  
 Condo/Townhouse/Apt., Single Family

Month/Year	Price	% Chg.
Jan '22	\$375K	5.3%
Jan '21	\$356K	9.3%
Jan '20	\$326K	-8.6%



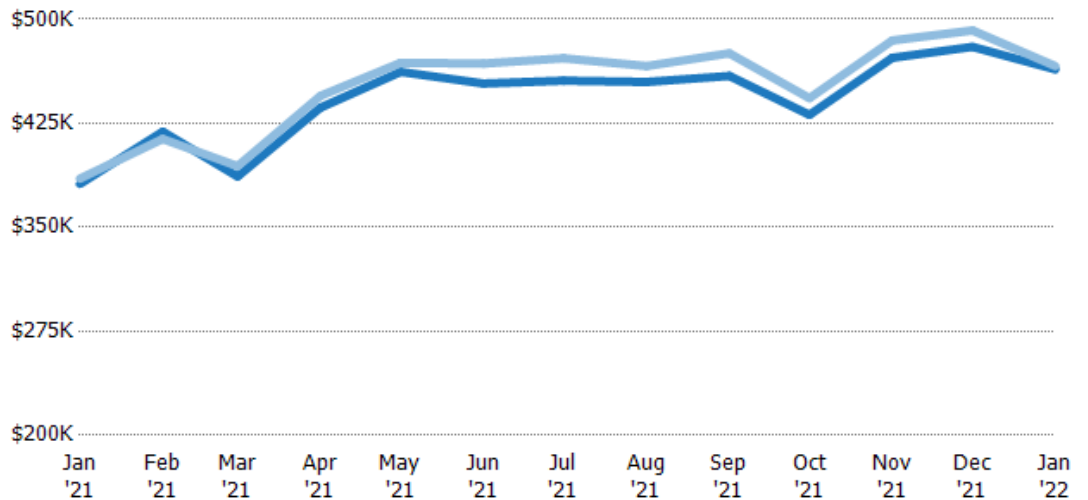
Current Year	\$356K	\$350K	\$370K	\$385K	\$380K	\$402K	\$410K	\$412K	\$379K	\$400K	\$444K	\$410K	\$375K
Prior Year	\$326K	\$300K	\$329K	\$335K	\$317K	\$350K	\$358K	\$375K	\$355K	\$344K	\$370K	\$370K	\$356K
Percent Change from Prior Year	9%	17%	13%	15%	20%	15%	15%	10%	7%	16%	20%	11%	5%

## Average Sales Price vs Average Listing Price

The average sales price as a percentage of the average listing price for properties sold each month.

### Filters Used

State: VT  
 County: Chittenden County, Vermont  
 Property Type:  
 Condo/Townhouse/Apt., Single Family



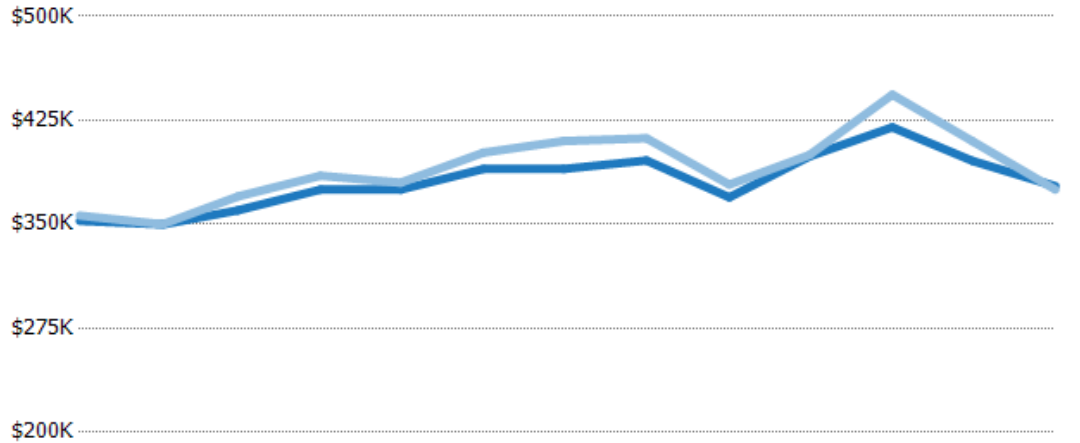
Avg List Price	\$381K	\$419K	\$387K	\$436K	\$462K	\$454K	\$456K	\$455K	\$459K	\$431K	\$472K	\$480K	\$464K
Avg Sales Price	\$385K	\$414K	\$394K	\$445K	\$469K	\$468K	\$472K	\$466K	\$475K	\$443K	\$485K	\$492K	\$466K
Avg Sales Price as a % of Avg List Price	101%	99%	102%	102%	101%	103%	104%	103%	104%	103%	103%	102%	101%

## Median Sales Price vs Median Listing Price

The median sales price as a percentage of the median listing price for properties sold each month.

### Filters Used

State: VT  
 County: Chittenden County, Vermont  
 Property Type:  
 Condo/Townhouse/Apt., Single  
 Family



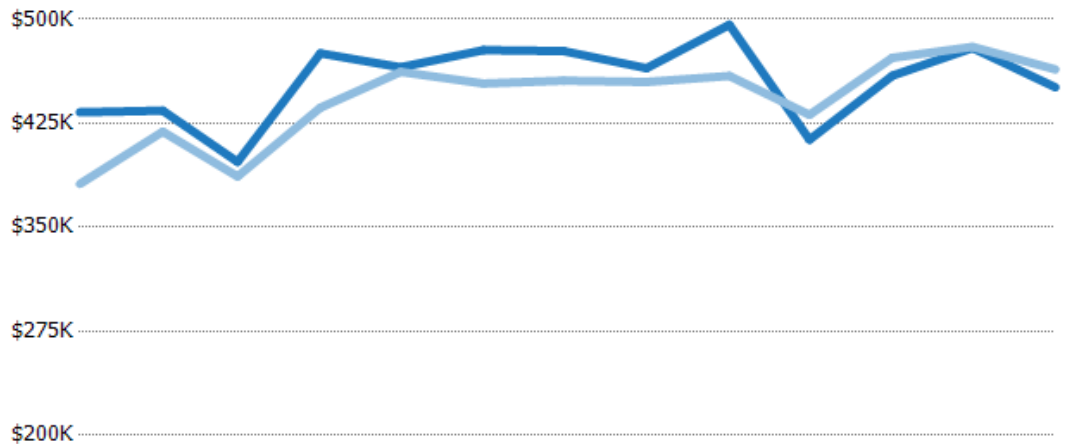
	Jan '21	Feb '21	Mar '21	Apr '21	May '21	Jun '21	Jul '21	Aug '21	Sep '21	Oct '21	Nov '21	Dec '21	Jan '22
Median List Price	\$352K	\$350K	\$360K	\$375K	\$375K	\$390K	\$390K	\$396K	\$369K	\$399K	\$420K	\$396K	\$378K
Median Sales Price	\$356K	\$350K	\$370K	\$385K	\$380K	\$402K	\$410K	\$412K	\$379K	\$400K	\$444K	\$410K	\$375K
Med Sales Price as a % of Med List Price	101%	100%	103%	103%	101%	103%	105%	104%	102%	100%	106%	104%	99%

## Average Sales Price vs Average Est Value

The average sales price as a percentage of the average AVM or RVM® valuation estimate for properties sold each month.

### Filters Used

State: VT  
 County: Chittenden County, Vermont  
 Property Type:  
 Condo/Townhouse/Apt., Single  
 Family



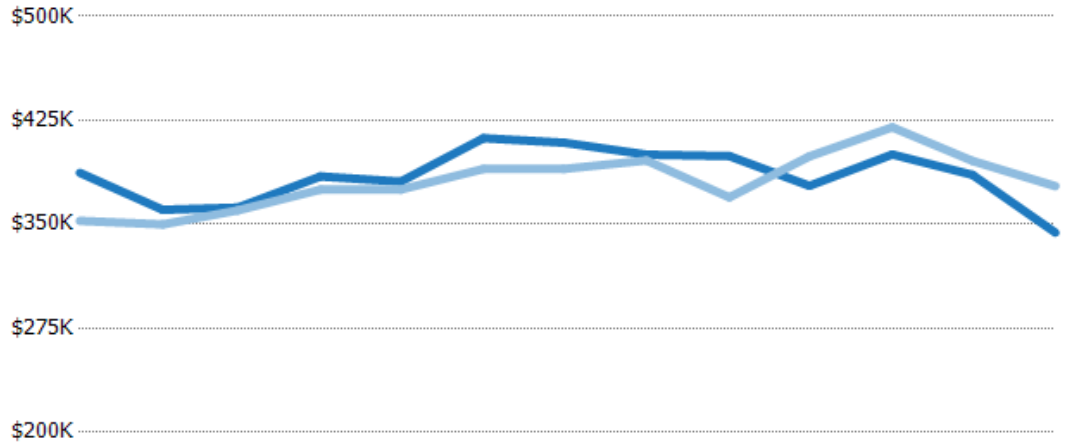
	Jan '21	Feb '21	Mar '21	Apr '21	May '21	Jun '21	Jul '21	Aug '21	Sep '21	Oct '21	Nov '21	Dec '21	Jan '22
Avg Est Value	\$433K	\$434K	\$397K	\$475K	\$465K	\$478K	\$477K	\$465K	\$496K	\$413K	\$459K	\$479K	\$451K
Avg Sales Price	\$381K	\$419K	\$387K	\$436K	\$462K	\$454K	\$456K	\$455K	\$459K	\$431K	\$472K	\$480K	\$464K
Avg Sales Price as a % of Avg Est Value	88%	97%	97%	92%	99%	95%	96%	98%	93%	104%	103%	100%	103%

## Median Sales Price vs Median Est Value

The median sales price as a percent of the median AVM or RVM® valuation estimate for properties sold each month.

### Filters Used

State: VT  
 County: Chittenden County, Vermont  
 Property Type:  
 Condo/Townhouse/Apt., Single  
 Family



	Jan '21	Feb '21	Mar '21	Apr '21	May '21	Jun '21	Jul '21	Aug '21	Sep '21	Oct '21	Nov '21	Dec '21	Jan '22
Median Est Value	\$387K	\$360K	\$362K	\$385K	\$381K	\$412K	\$409K	\$400K	\$399K	\$378K	\$400K	\$386K	\$344K
Median Sales Price	\$352K	\$350K	\$360K	\$375K	\$375K	\$390K	\$390K	\$396K	\$369K	\$399K	\$420K	\$396K	\$378K
Med Sales Price as a % of Med Est Value	91%	97%	99%	98%	98%	95%	95%	99%	93%	106%	105%	103%	110%