

Summary of Key Listing and Sales Metrics

A summary of the key metrics selected to be included in the report. MLS sources where licensed.

Key Metrics	Feb 2022	Feb 2021	+ / -	YTD 2022	YTD 2021	+ / -
Listing Activity Charts Metrics						
New Listing Count	37	42	-11.9%	73	88	-17%
New Listing Volume	\$20,385,700	\$17,191,998	+18.6%	\$38,724,118	\$33,963,548	+14%
Active Listing Count	48	143	-66.4%	N/A	N/A	
Active Listing Volume	\$24,582,700	\$78,345,099	-68.6%	N/A	N/A	
Average Listing Price	\$512,140	\$547,868	-6.5%	\$559,224	\$532,316	+5.1%
Median Listing Price	\$422,450	\$319,000	+32.4%	\$407,531	\$302,839	+34.6%
Median Days in RPR	17.5	152	-88.5%	65.9	145.68	-54.8%
Months of Inventory	1.5	3.7	-57.8%	1.6	5.8	-73.2%
Absorption Rate	64.58%	27.27%	+37.3%	63.79%	17.1%	+46.7%
Sales Activity Charts Metrics						
New Pending Sales Count	12	70	-82.9%	31	114	-72.8%
New Pending Sales Volume	\$9,901,400	\$24,405,499	-59.4%	\$16,941,818	\$43,224,399	-60.8%
Pending Sales Count	27	102	-73.5%	N/A	N/A	
Pending Sales Volume	\$17,572,818	\$44,411,148	-60.4%	N/A	N/A	
Closed Sales Count	26	35	-25.7%	57	74	-23%
Closed Sales Volume	\$9,457,708	\$11,167,400	-15.3%	\$21,743,405	\$21,990,100	-1.1%
Average Sales Price	\$363,758	\$319,069	+14%	\$381,463	\$297,164	+28.4%
Median Sales Price	\$240,000	\$245,000	-2%	\$327,018	\$250,270	+30.7%

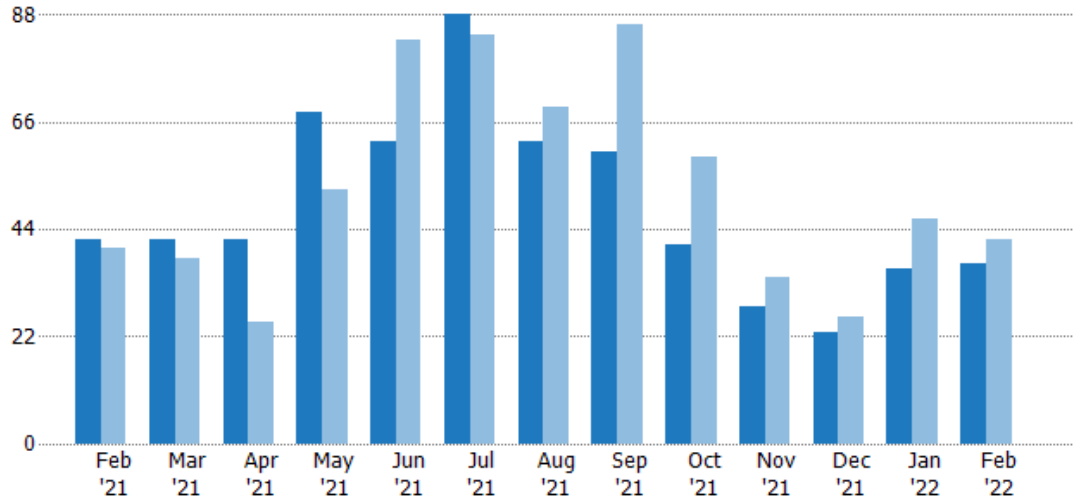
New Listings

The number of new residential listings that were added each month.

Filters Used

State: VT
 County: Bennington County, Vermont
 Property Type: Condo/Townhouse/Apt., Single Family

Month/Year	Count	% Chg.
Feb '22	37	-11.9%
Feb '21	42	5%
Feb '20	40	-2.5%



Current Year	42	42	42	68	62	88	62	60	41	28	23	36	37
Prior Year	40	38	25	52	83	84	69	86	59	34	26	46	42
Percent Change from Prior Year	5%	11%	68%	31%	-25%	5%	-10%	-30%	-31%	-18%	-12%	-22%	-12%

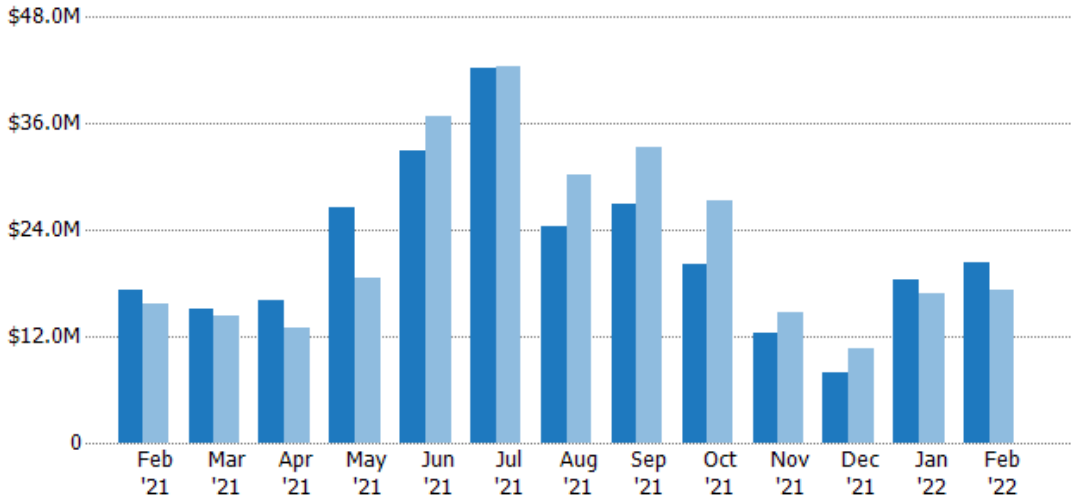
New Listing Volume

The sum of the listing price of residential listings that were added each month.

Filters Used

State: VT
 County: Bennington County, Vermont
 Property Type: Condo/Townhouse/Apt., Single Family

Month/Year	Volume	% Chg.
Feb '22	\$20.4M	18.6%
Feb '21	\$17.2M	9.4%
Feb '20	\$15.7M	9.5%



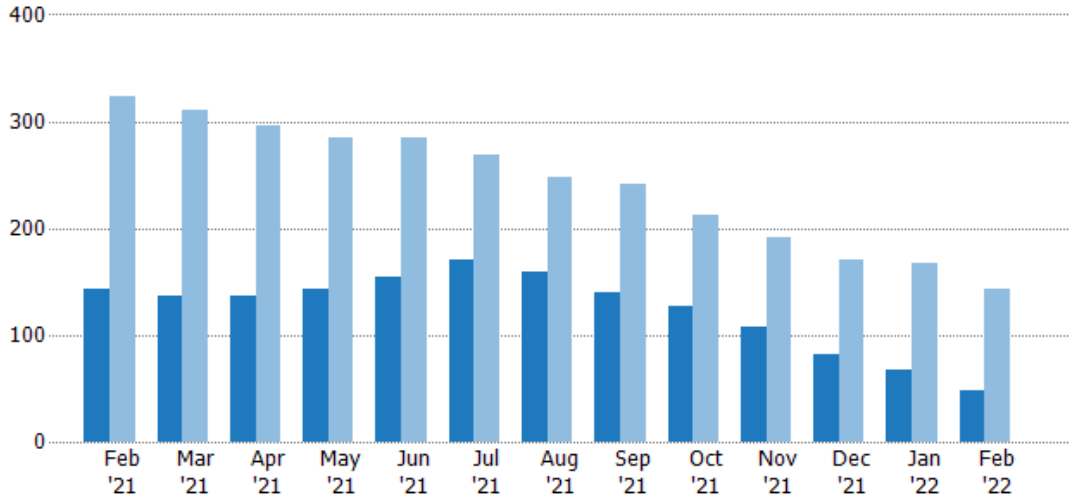
Current Year	\$17.2M	\$15.1M	\$16.1M	\$26.4M	\$32.9M	\$42.2M	\$24.5M	\$27M	\$20.1M	\$12.4M	\$7.85M	\$18.3M	\$20.4M
Prior Year	\$15.7M	\$14.4M	\$13M	\$18.5M	\$36.9M	\$42.5M	\$30.1M	\$33.3M	\$27.4M	\$14.7M	\$10.6M	\$16.8M	\$17.2M
Percent Change from Prior Year	9%	5%	24%	43%	-11%	-1%	-19%	-19%	-27%	-16%	-26%	9%	19%

Active Listings

The number of active residential listings at the end of each month.

Filters Used

State: VT
 County: Bennington County, Vermont
 Property Type: Condo/Townhouse/Apt., Single Family



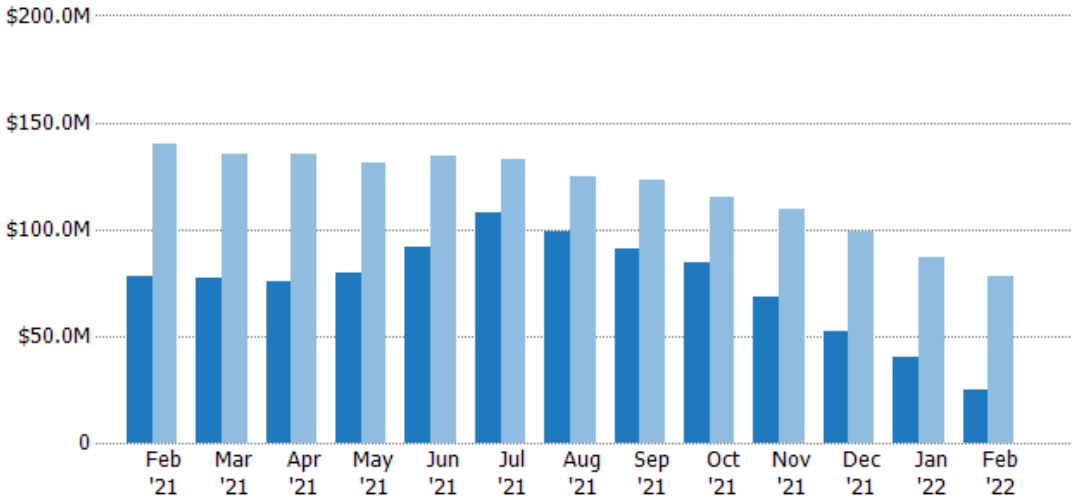
	Feb '21	Mar '21	Apr '21	May '21	Jun '21	Jul '21	Aug '21	Sep '21	Oct '21	Nov '21	Dec '21	Jan '22	Feb '22
Current Year	143	136	137	143	154	171	159	140	127	108	82	68	48
Prior Year	323	310	296	284	284	269	247	241	212	192	170	167	143
Percent Change from Prior Year	-56%	-56%	-54%	-50%	-46%	-36%	-36%	-42%	-40%	-44%	-52%	-59%	-66%

Active Listing Volume

The sum of the listing price of active residential listings at the end of each month.

Filters Used

State: VT
 County: Bennington County, Vermont
 Property Type: Condo/Townhouse/Apt., Single Family



	Feb '21	Mar '21	Apr '21	May '21	Jun '21	Jul '21	Aug '21	Sep '21	Oct '21	Nov '21	Dec '21	Jan '22	Feb '22
Current Year	\$78.3M	\$76.8M	\$75.3M	\$79.8M	\$92M	\$107M	\$98.6M	\$91.1M	\$84.5M	\$67.9M	\$52.5M	\$40.3M	\$24.6M
Prior Year	\$140M	\$135M	\$135M	\$131M	\$134M	\$132M	\$124M	\$123M	\$115M	\$109M	\$98.9M	\$86.7M	\$78.3M
Percent Change from Prior Year	-44%	-43%	-44%	-39%	-31%	-19%	-21%	-26%	-27%	-38%	-47%	-54%	-69%

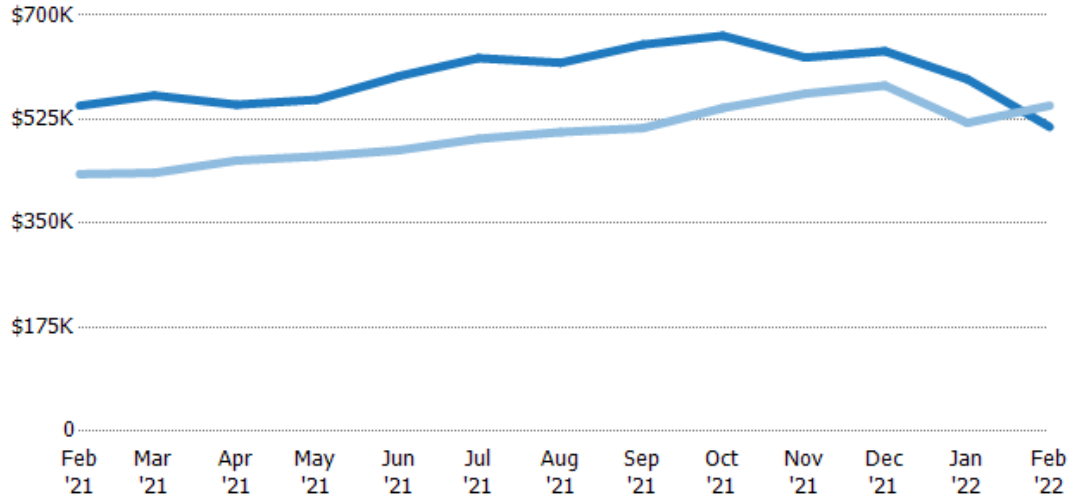
Average Listing Price

The average listing price of active residential listings at the end of each month.

Filters Used

State: VT
 County: Bennington County, Vermont
 Property Type: Condo/Townhouse/Apt., Single Family

Month/Year	Price	% Chg.
Feb '22	\$512K	-6.5%
Feb '21	\$548K	26.6%
Feb '20	\$433K	-7.1%



Current Year	\$548K	\$565K	\$549K	\$558K	\$597K	\$628K	\$620K	\$651K	\$665K	\$629K	\$640K	\$592K	\$512K
Prior Year	\$433K	\$435K	\$455K	\$463K	\$473K	\$492K	\$503K	\$510K	\$544K	\$568K	\$582K	\$519K	\$548K
Percent Change from Prior Year	27%	30%	21%	21%	26%	28%	23%	28%	22%	11%	10%	14%	-7%

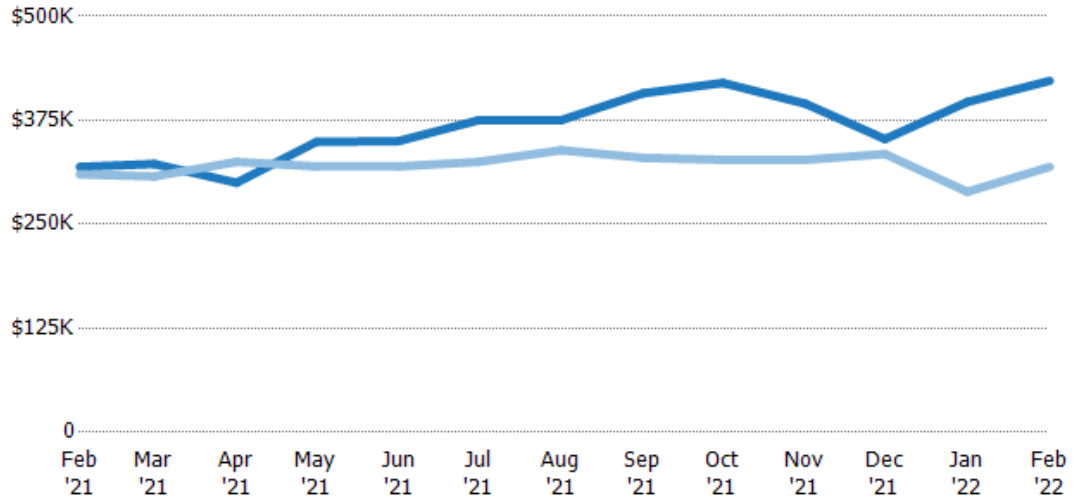
Median Listing Price

The median listing price of active residential listings at the end of each month.

Filters Used

State: VT
 County: Bennington County, Vermont
 Property Type: Condo/Townhouse/Apt., Single Family

Month/Year	Price	% Chg.
Feb '22	\$422K	32.4%
Feb '21	\$319K	2.9%
Feb '20	\$310K	-6.8%



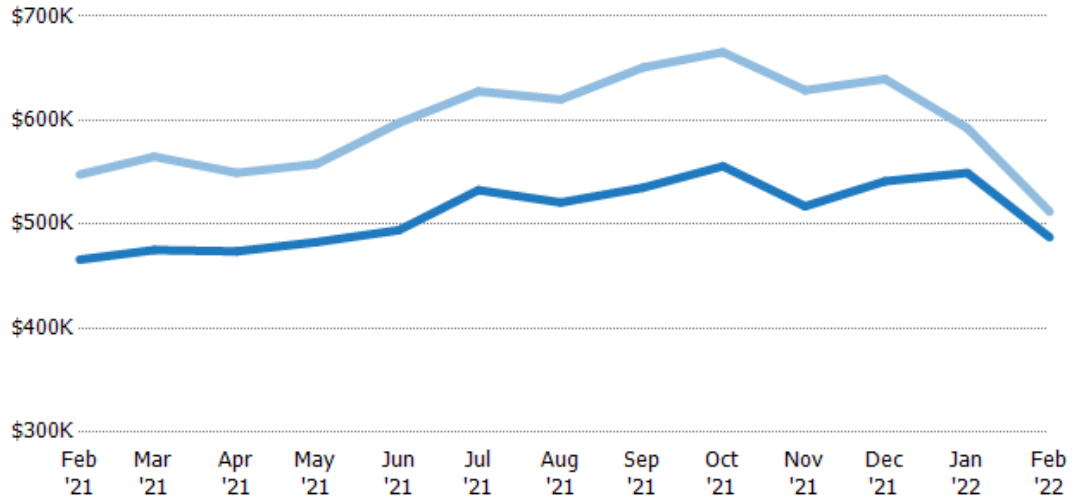
Current Year	\$319K	\$323K	\$300K	\$349K	\$350K	\$375K	\$375K	\$407K	\$420K	\$395K	\$352K	\$397K	\$422K
Prior Year	\$310K	\$308K	\$325K	\$320K	\$320K	\$325K	\$339K	\$330K	\$328K	\$327K	\$335K	\$289K	\$319K
Percent Change from Prior Year	3%	5%	-8%	9%	10%	15%	11%	24%	28%	21%	5%	37%	32%

Average Listing Price vs Average Est Value

The average listing price as a percentage of the average AVM or RVM® valuation estimate for active listings each month.

Filters Used

State: VT
 County: Bennington County,
 Vermont
 Property Type:
 Condo/Townhouse/Apt., Single
 Family

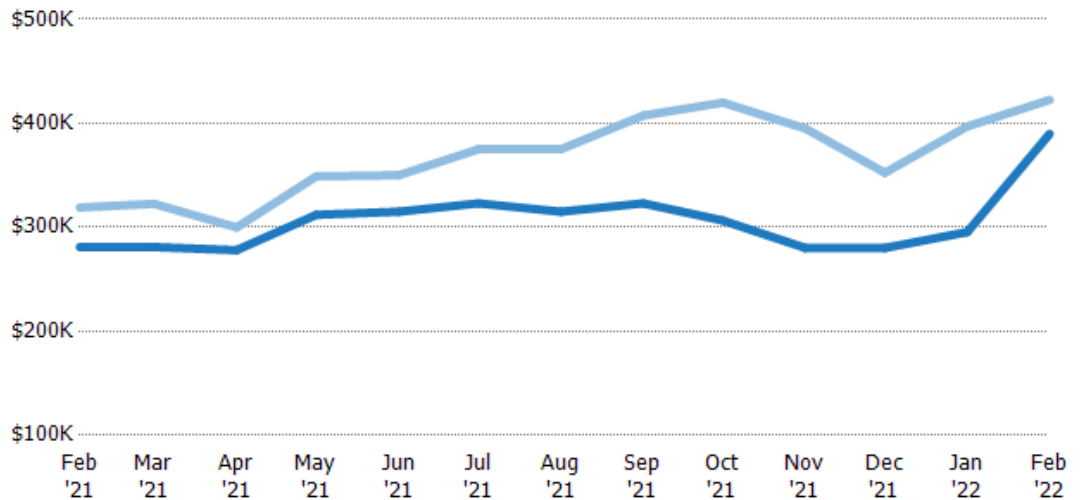


Median Listing Price vs Median Est Value

The median listing price as a percentage of the median AVM or RVM® valuation estimate for active listings each month.

Filters Used

State: VT
 County: Bennington County,
 Vermont
 Property Type:
 Condo/Townhouse/Apt., Single
 Family



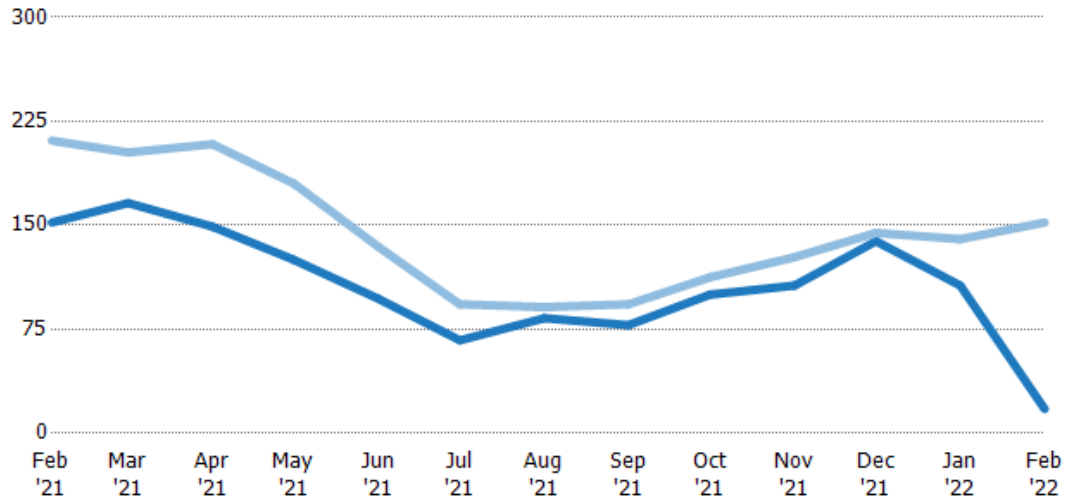
Median Days in RPR

The median number of days between when residential properties are first displayed as active listings in RPR and when accepted offers have been noted in RPR.

Filters Used

State: VT
 County: Bennington County, Vermont
 Property Type: Condo/Townhouse/Apt., Single Family

Month/Year	Days	% Chg.
Feb '22	17.5	-88.5%
Feb '21	152	-28%
Feb '20	211	-8.5%



Current Year	152	166	149	125	97	67	83	78	100	107	139	107	17.5
Prior Year	211	203	209	180	135	93	91	93	113	127	145	140	152
Percent Change from Prior Year	-28%	-18%	-29%	-31%	-28%	-28%	-9%	-16%	-11%	-16%	-4%	-24%	-88%

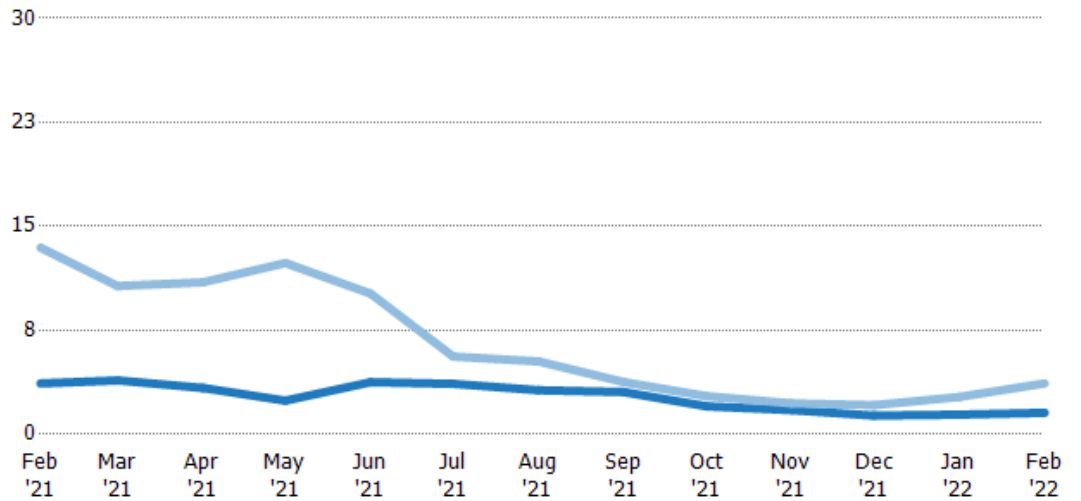
Months of Inventory

The number of months it would take to exhaust active listings at the current sales rate.

Filters Used

State: VT
 County: Bennington County, Vermont
 Property Type: Condo/Townhouse/Apt., Single Family

Month/Year	Months	% Chg.
Feb '22	1.55	-57.8%
Feb '21	3.67	-72.8%
Feb '20	13.5	69.9%



Current Year	3.67	3.89	3.34	2.42	3.76	3.64	3.18	3.04	2.02	1.74	1.34	1.42	1.55
Prior Year	13.5	10.7	11	12.3	10.1	5.6	5.26	3.77	2.75	2.23	2.1	2.69	3.67
Percent Change from Prior Year	-73%	-64%	-70%	-80%	-63%	-35%	-39%	-19%	-27%	-22%	-36%	-47%	-58%

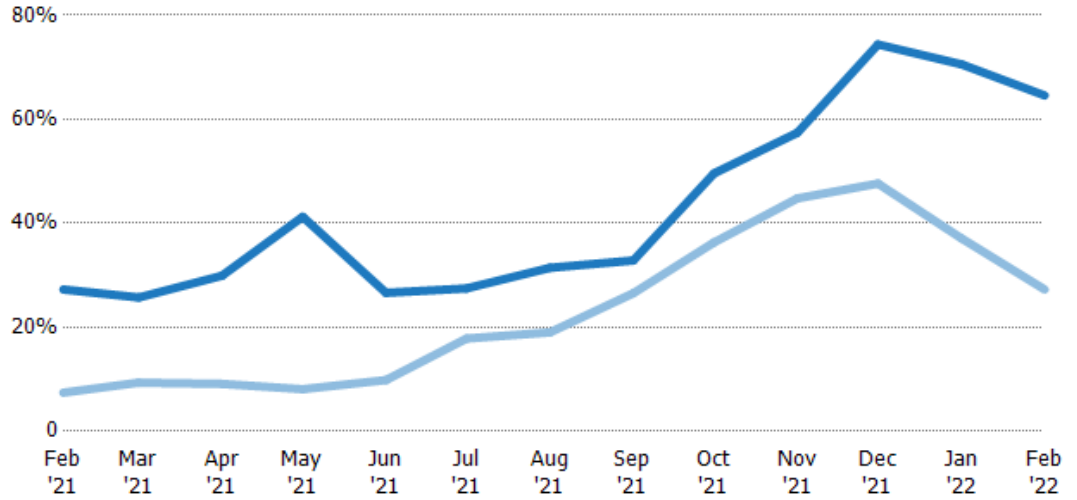
Absorption Rate

The percentage of inventory sold per month.

Filters Used

State: VT
 County: Bennington County, Vermont
 Property Type: Condo/Townhouse/Apt., Single Family

Month/Year	Rate	Chg.
Feb '22	65%	-37.3%
Feb '21	27%	-19.8%
Feb '20	7%	-41.2%



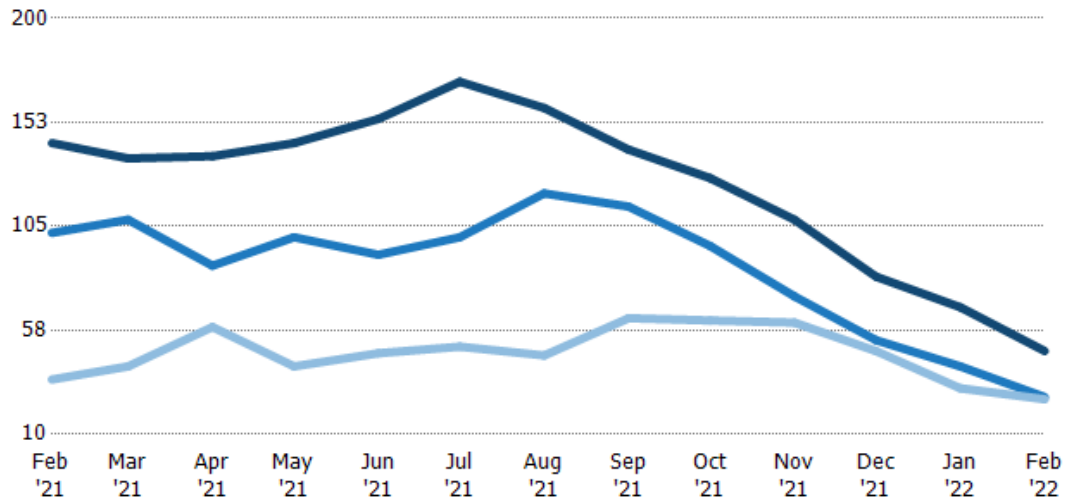
	Feb '21	Mar '21	Apr '21	May '21	Jun '21	Jul '21	Aug '21	Sep '21	Oct '21	Nov '21	Dec '21	Jan '22	Feb '22
Current Year	27%	26%	30%	41%	27%	27%	31%	33%	50%	57%	74%	71%	65%
Prior Year	7%	9%	9%	8%	10%	18%	19%	27%	36%	45%	48%	37%	27%
Change from Prior Year	-20%	-16%	-21%	-33%	-17%	-10%	-12%	-6%	-13%	-13%	-27%	-33%	-37%

Active/Pending/Sold Units

The number of residential properties that were Active, Pending and Sold each month.

Filters Used

State: VT
 County: Bennington County, Vermont
 Property Type: Condo/Townhouse/Apt., Single Family



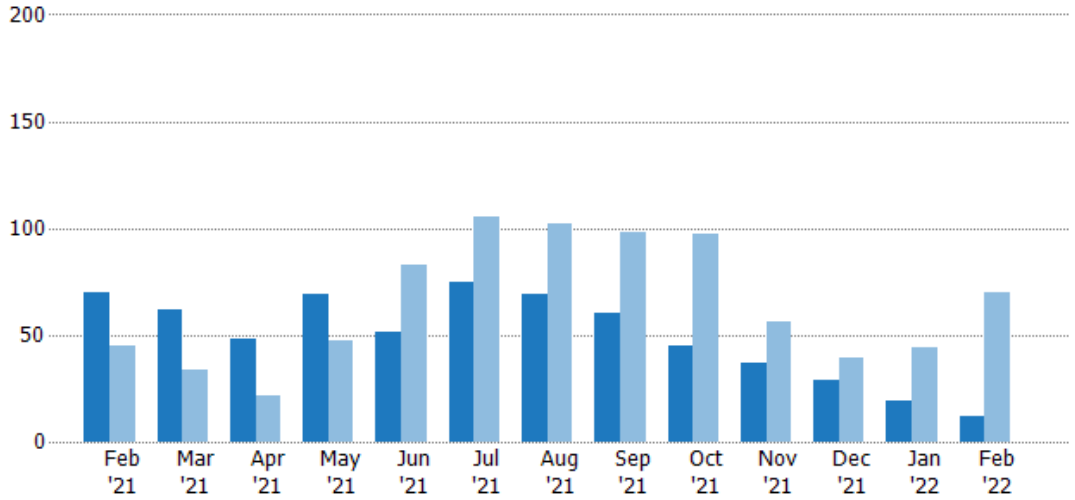
	Feb '21	Mar '21	Apr '21	May '21	Jun '21	Jul '21	Aug '21	Sep '21	Oct '21	Nov '21	Dec '21	Jan '22	Feb '22
Active	143	136	137	143	154	171	159	140	127	108	82	68	48
Pending	102	108	87	100	92	100	120	114	96	73	53	41	27
Sold	35	41	59	41	47	50	46	63	62	61	48	31	26

New Pending Sales

The number of residential properties with accepted offers that were added each month.

Filters Used

State: VT
 County: Bennington County, Vermont
 Property Type: Condo/Townhouse/Apt., Single Family



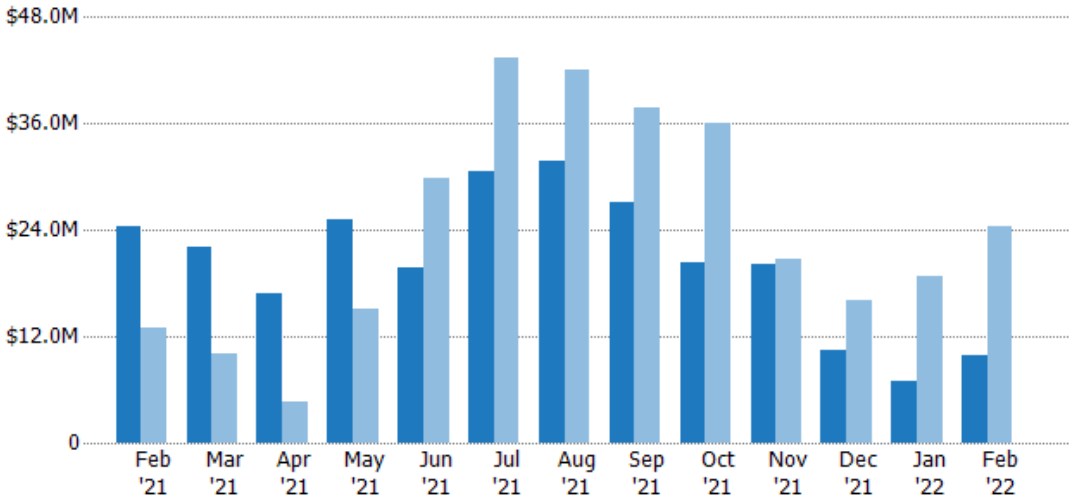
Month/Year	Count	% Chg.
Feb '22	12	-82.9%
Feb '21	70	55.6%
Feb '20	45	-26.7%

New Pending Sales Volume

The sum of the sales price of residential properties with accepted offers that were added each month.

Filters Used

State: VT
 County: Bennington County, Vermont
 Property Type: Condo/Townhouse/Apt., Single Family



Month/Year	Volume	% Chg.
Feb '22	\$9.9M	-59.4%
Feb '21	\$24.4M	89.7%
Feb '20	\$12.9M	-25.9%

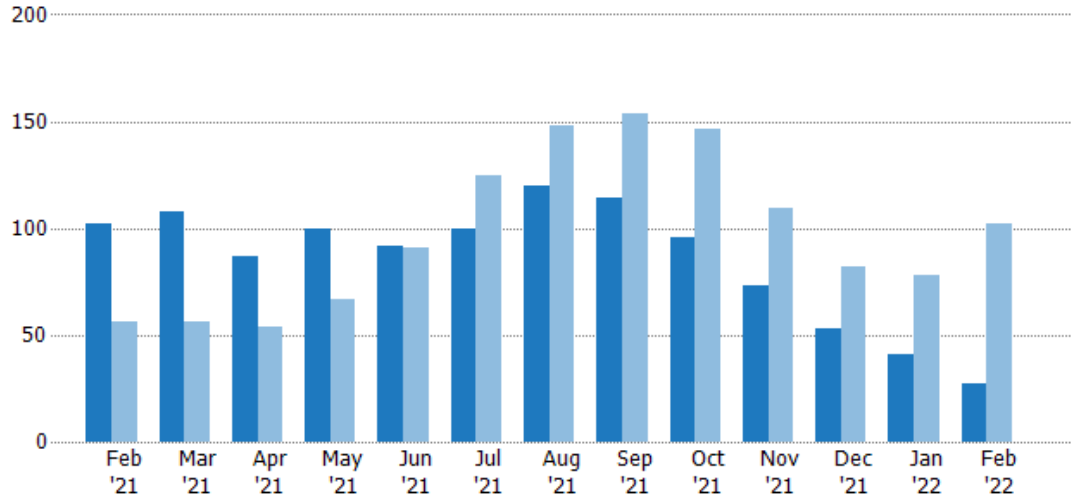
Pending Sales

The number of residential properties with accepted offers that were available at the end each month.

Filters Used

State: VT
 County: Bennington County, Vermont
 Property Type: Condo/Townhouse/Apt., Single Family

Month/Year	Count	% Chg.
Feb '22	27	-73.5%
Feb '21	102	82.1%
Feb '20	56	1.8%



Current Year	102	108	87	100	92	100	120	114	96	73	53	41	27
Prior Year	56	56	54	67	91	125	148	154	146	109	82	78	102
Percent Change from Prior Year	82%	93%	61%	49%	1%	-20%	-19%	-26%	-34%	-33%	-35%	-47%	-74%

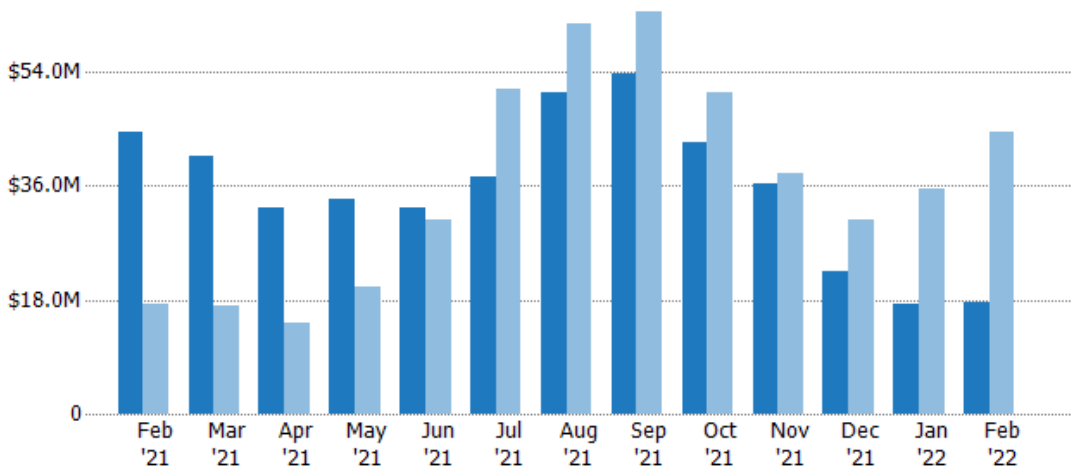
Pending Sales Volume

The sum of the sales price of residential properties with accepted offers that were available at the end of each month.

Filters Used

State: VT
 County: Bennington County, Vermont
 Property Type: Condo/Townhouse/Apt., Single Family

Month/Year	Volume	% Chg.
Feb '22	\$17.6M	-60.4%
Feb '21	\$44.4M	158.1%
Feb '20	\$17.2M	-8.4%



Current Year	\$44.4M	\$40.6M	\$32.6M	\$34M	\$32.5M	\$37.5M	\$50.9M	\$53.7M	\$43M	\$36.3M	\$22.4M	\$17.2M	\$17.6M
Prior Year	\$17.2M	\$17.1M	\$14.4M	\$19.9M	\$30.5M	\$51.2M	\$61.6M	\$63.4M	\$50.7M	\$37.9M	\$30.5M	\$35.4M	\$44.4M
Percent Change from Prior Year	158%	137%	126%	71%	7%	-27%	-17%	-15%	-15%	-4%	-27%	-51%	-60%

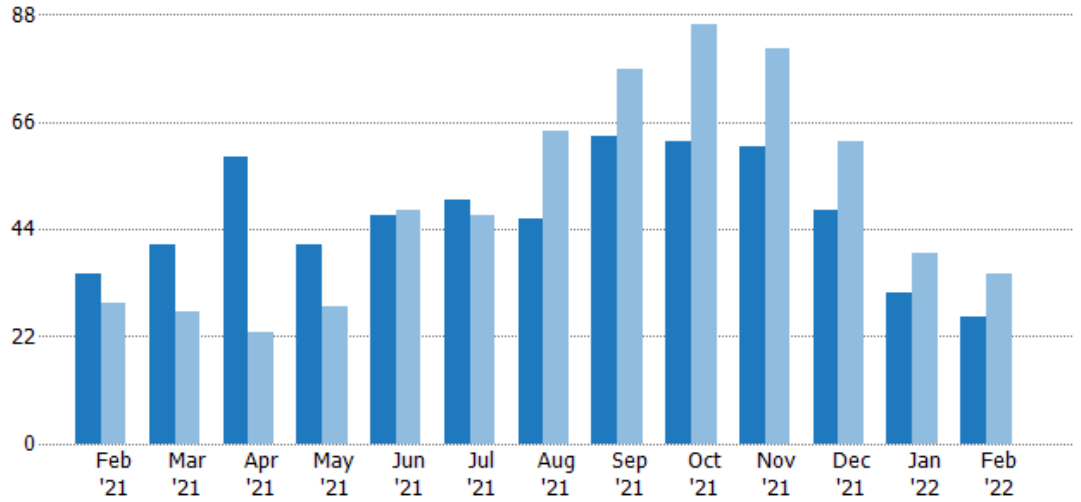
Closed Sales

The total number of residential properties sold each month.

Filters Used

State: VT
 County: Bennington County, Vermont
 Property Type: Condo/Townhouse/Apt., Single Family

Month/Year	Count	% Chg.
Feb '22	26	-25.7%
Feb '21	35	20.7%
Feb '20	29	-37.9%



Current Year	35	41	59	41	47	50	46	63	62	61	48	31	26
Prior Year	29	27	23	28	48	47	64	77	86	81	62	39	35
Percent Change from Prior Year	21%	52%	157%	46%	-2%	6%	-28%	-18%	-28%	-25%	-23%	-21%	-26%

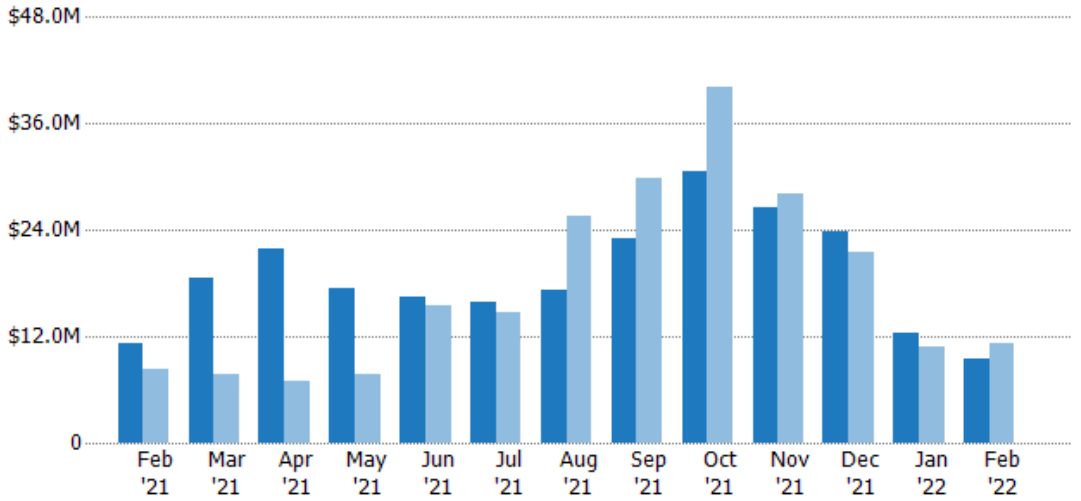
Closed Sales Volume

The sum of the sales price of residential properties sold each month.

Filters Used

State: VT
 County: Bennington County, Vermont
 Property Type: Condo/Townhouse/Apt., Single Family

Month/Year	Volume	% Chg.
Feb '22	\$9.46M	-15.3%
Feb '21	\$11.2M	34%
Feb '20	\$8.33M	-44.4%



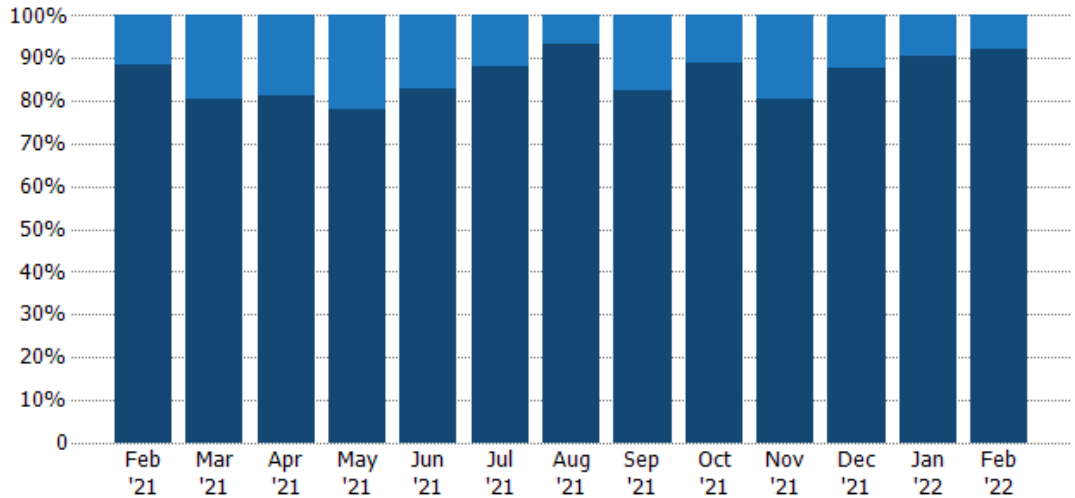
Current Year	\$11.2M	\$18.7M	\$21.9M	\$17.4M	\$16.4M	\$15.9M	\$17.3M	\$23M	\$30.6M	\$26.6M	\$23.8M	\$12.3M	\$9.46M
Prior Year	\$8.33M	\$7.68M	\$6.94M	\$7.81M	\$15.5M	\$14.7M	\$25.5M	\$29.9M	\$40.1M	\$28M	\$21.5M	\$10.8M	\$11.2M
Percent Change from Prior Year	34%	143%	216%	123%	5%	8%	-32%	-23%	-24%	-5%	11%	14%	-15%

Closed Sales by Property Type

The percentage of residential properties sold each month by property type.

Filters Used

State: VT
 County: Bennington County, Vermont
 Property Type: Condo/Townhouse/Apt., Single Family



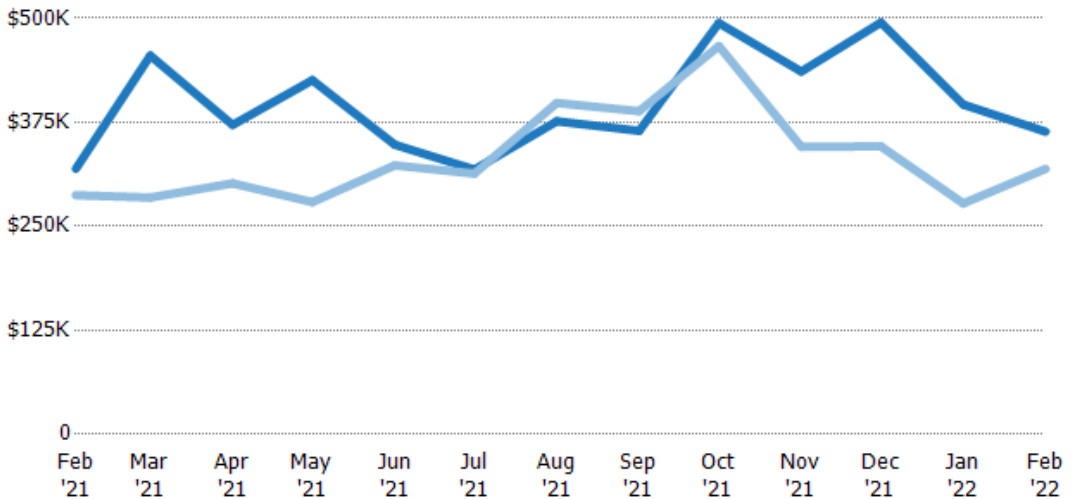
Condo/Townhouse	11%	20%	19%	22%	17%	12%	7%	17%	11%	20%	13%	10%	8%
Single Family Residence	89%	80%	81%	78%	83%	88%	93%	83%	89%	80%	88%	90%	92%

Average Sales Price

The average sales price of the residential properties sold each month.

Filters Used

State: VT
 County: Bennington County, Vermont
 Property Type: Condo/Townhouse/Apt., Single Family



Month/Year	Price	% Chg.
Feb '22	\$364K	14%
Feb '21	\$319K	11%
Feb '20	\$287K	-10.4%

Current Year	\$319K	\$455K	\$372K	\$426K	\$348K	\$318K	\$376K	\$365K	\$494K	\$436K	\$495K	\$396K	\$364K
Prior Year	\$287K	\$285K	\$302K	\$279K	\$323K	\$313K	\$398K	\$388K	\$467K	\$346K	\$346K	\$278K	\$319K
Percent Change from Prior Year	11%	60%	23%	53%	8%	2%	-6%	-6%	6%	26%	43%	43%	14%

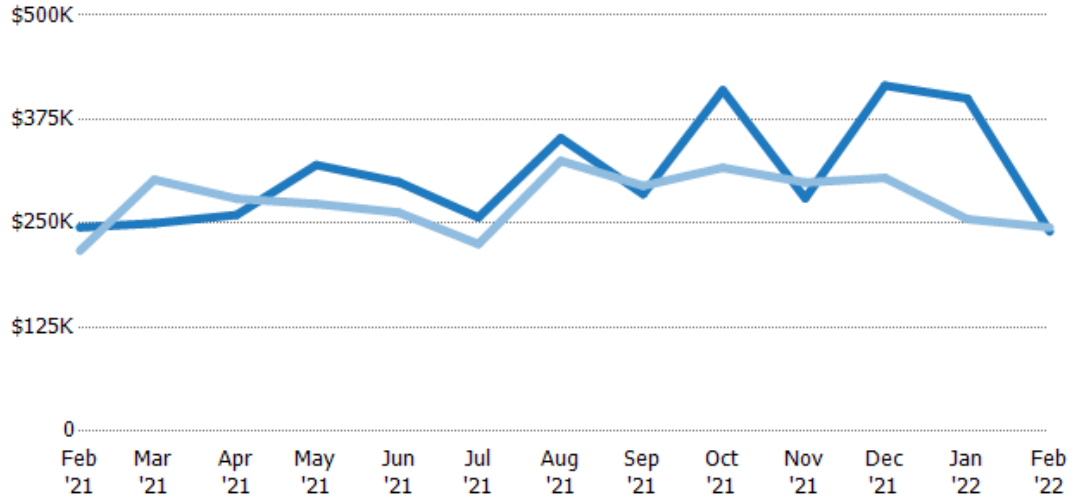
Median Sales Price

The median sales price of the residential properties sold each month.

Filters Used

State: VT
 County: Bennington County, Vermont
 Property Type: Condo/Townhouse/Apt., Single Family

Month/Year	Price	% Chg.
Feb '22	\$240K	-2%
Feb '21	\$245K	12.9%
Feb '20	\$217K	-10.7%



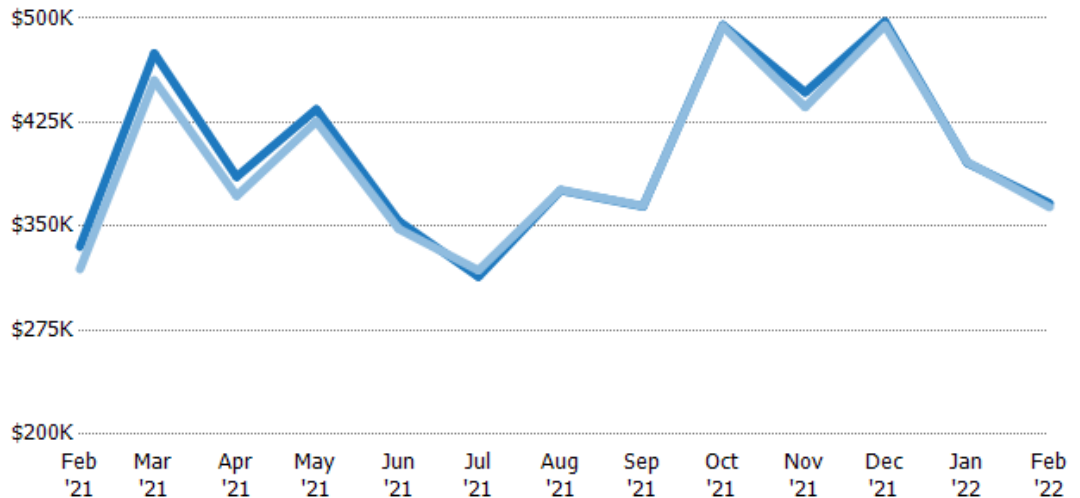
	Feb '21	Mar '21	Apr '21	May '21	Jun '21	Jul '21	Aug '21	Sep '21	Oct '21	Nov '21	Dec '21	Jan '22	Feb '22
Current Year	\$245K	\$250K	\$260K	\$320K	\$300K	\$257K	\$353K	\$285K	\$410K	\$280K	\$416K	\$400K	\$240K
Prior Year	\$217K	\$303K	\$280K	\$273K	\$263K	\$225K	\$325K	\$295K	\$317K	\$299K	\$305K	\$255K	\$245K
Percent Change from Prior Year	13%	-17%	-7%	17%	14%	14%	8%	-3%	29%	-6%	36%	57%	-2%

Average Sales Price vs Average Listing Price

The average sales price as a percentage of the average listing price for properties sold each month.

Filters Used

State: VT
 County: Bennington County, Vermont
 Property Type: Condo/Townhouse/Apt., Single Family



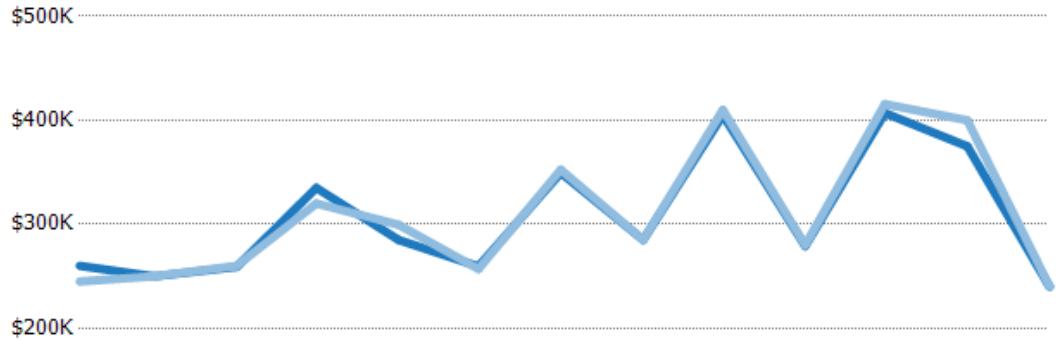
	Feb '21	Mar '21	Apr '21	May '21	Jun '21	Jul '21	Aug '21	Sep '21	Oct '21	Nov '21	Dec '21	Jan '22	Feb '22
Avg List Price	\$335K	\$475K	\$386K	\$434K	\$354K	\$314K	\$376K	\$364K	\$495K	\$447K	\$498K	\$396K	\$367K
Avg Sales Price	\$319K	\$455K	\$372K	\$426K	\$348K	\$318K	\$376K	\$365K	\$494K	\$436K	\$495K	\$396K	\$364K
Avg Sales Price as a % of Avg List Price	95%	96%	96%	98%	98%	101%	100%	100%	100%	98%	99%	100%	99%

Median Sales Price vs Median Listing Price

The median sales price as a percentage of the median listing price for properties sold each month.

Filters Used

State: VT
 County: Bennington County, Vermont
 Property Type: Condo/Townhouse/Apt., Single Family



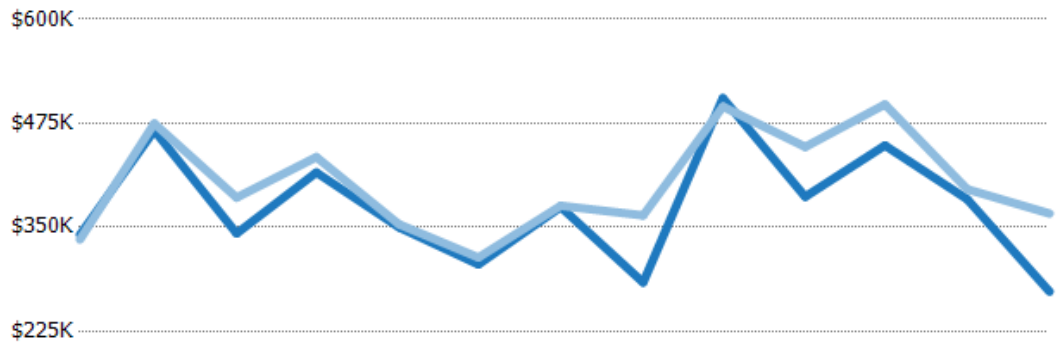
	Feb '21	Mar '21	Apr '21	May '21	Jun '21	Jul '21	Aug '21	Sep '21	Oct '21	Nov '21	Dec '21	Jan '22	Feb '22
Median List Price	\$260K	\$250K	\$259K	\$335K	\$285K	\$260K	\$350K	\$285K	\$405K	\$279K	\$407K	\$375K	\$240K
Median Sales Price	\$245K	\$250K	\$260K	\$320K	\$300K	\$257K	\$353K	\$285K	\$410K	\$280K	\$416K	\$400K	\$240K
Med Sales Price as a % of Med List Price	94%	100%	100%	96%	105%	99%	101%	100%	101%	100%	102%	107%	100%

Average Sales Price vs Average Est Value

The average sales price as a percentage of the average AVM or RVM® valuation estimate for properties sold each month.

Filters Used

State: VT
 County: Bennington County, Vermont
 Property Type: Condo/Townhouse/Apt., Single Family



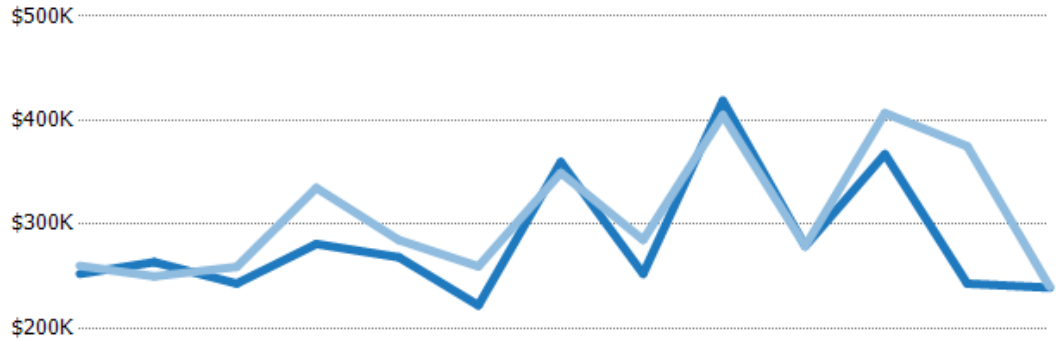
	Feb '21	Mar '21	Apr '21	May '21	Jun '21	Jul '21	Aug '21	Sep '21	Oct '21	Nov '21	Dec '21	Jan '22	Feb '22
Avg Est Value	\$341K	\$466K	\$343K	\$416K	\$350K	\$305K	\$374K	\$284K	\$505K	\$387K	\$448K	\$384K	\$272K
Avg Sales Price	\$335K	\$475K	\$386K	\$434K	\$354K	\$314K	\$376K	\$364K	\$495K	\$447K	\$498K	\$396K	\$367K
Avg Sales Price as a % of Avg Est Value	98%	102%	113%	104%	101%	103%	100%	128%	98%	115%	111%	103%	135%

Median Sales Price vs Median Est Value

The median sales price as a percent of the median AVM or RVM® valuation estimate for properties sold each month.

Filters Used

State: VT
 County: Bennington County, Vermont
 Property Type: Condo/Townhouse/Apt., Single Family



	Feb '21	Mar '21	Apr '21	May '21	Jun '21	Jul '21	Aug '21	Sep '21	Oct '21	Nov '21	Dec '21	Jan '22	Feb '22
Median Est Value	\$252K	\$264K	\$243K	\$281K	\$268K	\$222K	\$360K	\$252K	\$419K	\$279K	\$368K	\$243K	\$239K
Median Sales Price	\$260K	\$250K	\$259K	\$335K	\$285K	\$260K	\$350K	\$285K	\$405K	\$279K	\$407K	\$375K	\$240K
Med Sales Price as a % of Med Est Value	103%	95%	107%	119%	106%	117%	97%	113%	97%	100%	111%	154%	100%