

## Summary of Key Listing and Sales Metrics

A summary of the key metrics selected to be included in the report. MLS sources where licensed.

Key Metrics	Jan 2022	Jan 2021	+ / -	YTD 2022	YTD 2021	+ / -
<b>Listing Activity Charts Metrics</b>						
New Listing Count	35	45	-22.2%	634	675	-6.1%
New Listing Volume	\$18,133,518	\$16,602,750	+9.2%	\$275,427,862	\$288,772,558	-4.6%
Active Listing Count	64	167	-61.7%	N/A	N/A	
Active Listing Volume	\$39,473,500	\$86,672,800	-54.5%	N/A	N/A	
Average Listing Price	\$616,773	\$518,999	+18.8%	\$597,548	\$482,751	+23.8%
Median Listing Price	\$407,000	\$289,000	+40.8%	\$355,186	\$321,267	+10.6%
Median Days in RPR	112.5	140	-19.6%	115.04	130.92	-12.1%
Months of Inventory	1.3	2.7	-50.5%	1.7	7.3	-76.8%
Absorption Rate	75%	37.13%	+37.9%	59.38%	13.77%	+45.6%
<b>Sales Activity Charts Metrics</b>						
New Pending Sales Count	23	44	-47.7%	683	811	-15.8%
New Pending Sales Volume	\$7,824,218	\$18,818,900	-58.4%	\$275,396,311	\$299,771,136	-8.1%
Pending Sales Count	45	78	-42.3%	N/A	N/A	
Pending Sales Volume	\$17,939,818	\$35,389,899	-49.3%	N/A	N/A	
Closed Sales Count	31	38	-18.4%	618	624	-1%
Closed Sales Volume	\$12,285,697	\$10,653,900	+15.3%	\$244,788,757	\$221,111,799	+10.7%
Average Sales Price	\$396,313	\$280,366	+41.4%	\$396,098	\$354,346	+11.8%
Median Sales Price	\$400,000	\$256,500	+55.9%	\$309,438	\$288,074	+7.4%

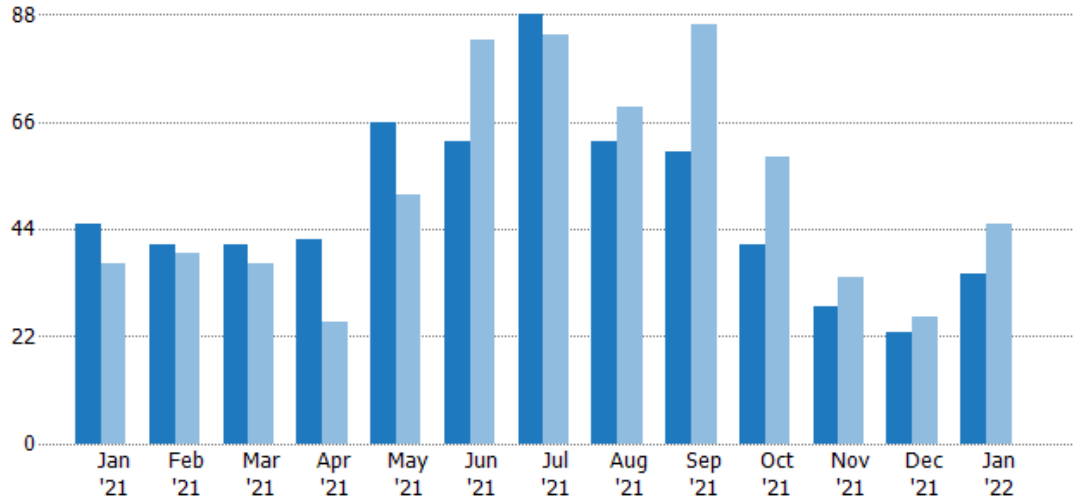
## New Listings

The number of new residential listings that were added each month.

### Filters Used

State: VT  
 County: Bennington County, Vermont  
 Property Type: Condo/Townhouse/Apt., Single Family

Month/Year	Count	% Chg.
Jan '22	35	-22.2%
Jan '21	45	21.6%
Jan '20	37	8.1%



Current Year	45	41	41	42	66	62	88	62	60	41	28	23	35
Prior Year	37	39	37	25	51	83	84	69	86	59	34	26	45
Percent Change from Prior Year	22%	5%	11%	68%	29%	-25%	5%	-10%	-30%	-31%	-18%	-12%	-22%

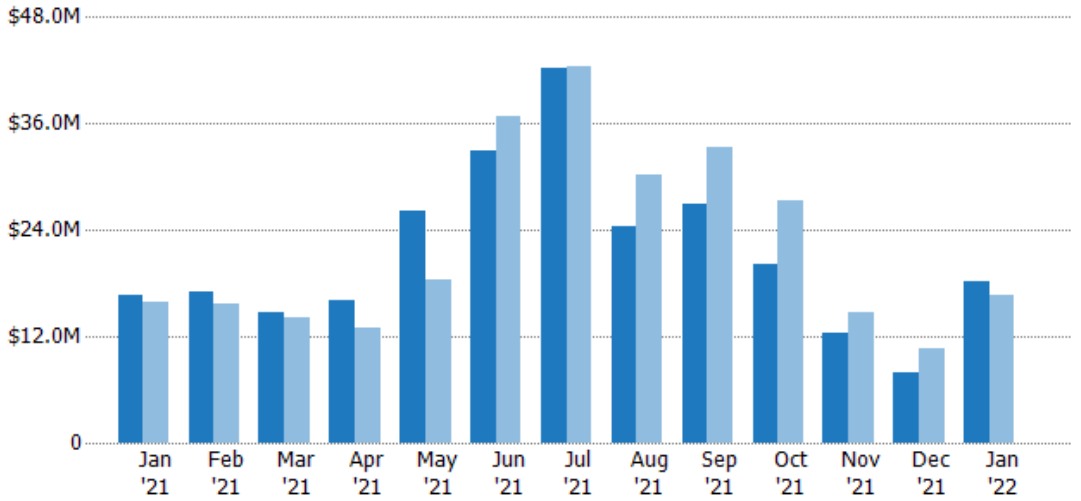
## New Listing Volume

The sum of the listing price of residential listings that were added each month.

### Filters Used

State: VT  
 County: Bennington County, Vermont  
 Property Type: Condo/Townhouse/Apt., Single Family

Month/Year	Volume	% Chg.
Jan '22	\$18.1M	9.2%
Jan '21	\$16.6M	4.9%
Jan '20	\$15.8M	-20.4%



Current Year	\$16.6M	\$17.1M	\$14.7M	\$16.1M	\$26.1M	\$32.9M	\$42.2M	\$24.5M	\$27M	\$20.1M	\$12.4M	\$7.85M	\$18.1M
Prior Year	\$15.8M	\$15.6M	\$14M	\$13M	\$18.3M	\$36.9M	\$42.5M	\$30.1M	\$33.3M	\$27.4M	\$14.7M	\$10.6M	\$16.6M
Percent Change from Prior Year	5%	10%	5%	24%	42%	-11%	-1%	-19%	-19%	-27%	-16%	-26%	9%

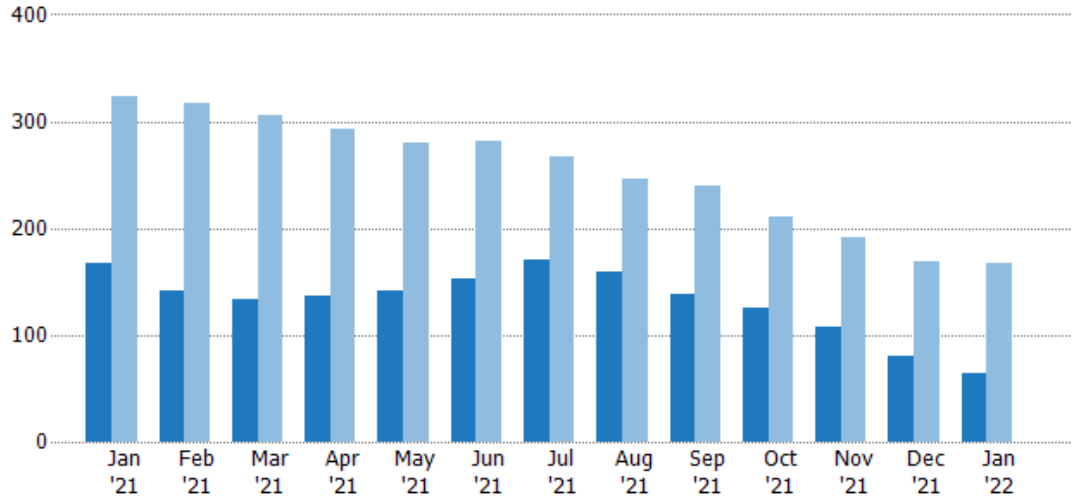
## Active Listings

The number of active residential listings at the end of each month.

### Filters Used

State: VT  
 County: Bennington County, Vermont  
 Property Type: Condo/Townhouse/Apt., Single Family

Month/Year	Count	% Chg.
Jan '22	64	-61.7%
Jan '21	167	-48.3%
Jan '20	323	0.3%



Current Year	167	142	134	136	142	153	171	159	139	126	107	81	64
Prior Year	323	317	305	293	280	282	267	246	240	211	191	169	167
Percent Change from Prior Year	-48%	-55%	-56%	-54%	-49%	-46%	-36%	-35%	-42%	-40%	-44%	-52%	-62%

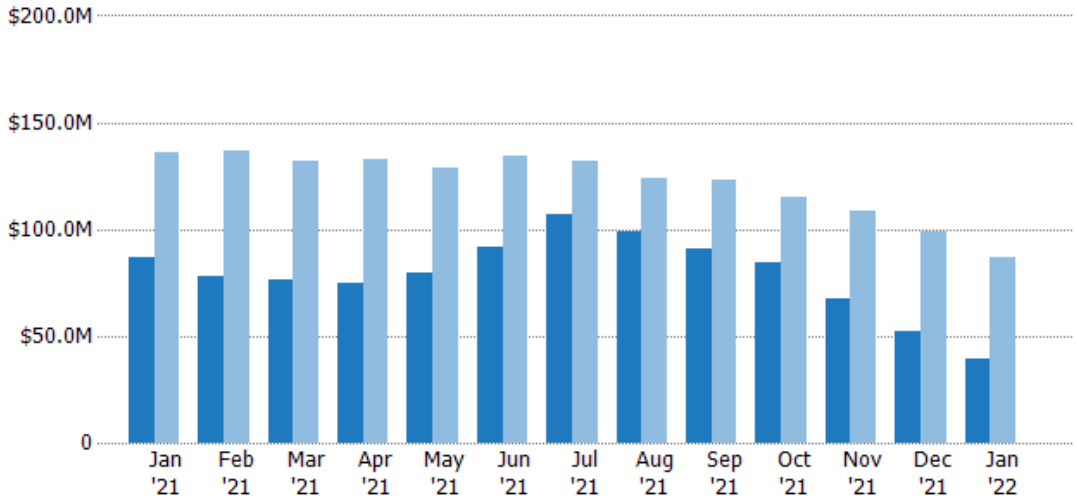
## Active Listing Volume

The sum of the listing price of active residential listings at the end of each month.

### Filters Used

State: VT  
 County: Bennington County, Vermont  
 Property Type: Condo/Townhouse/Apt., Single Family

Month/Year	Volume	% Chg.
Jan '22	\$39.5M	-54.5%
Jan '21	\$86.7M	-36.2%
Jan '20	\$136M	-10.1%



Current Year	\$86.7M	\$78.2M	\$76.3M	\$74.9M	\$79.7M	\$91.9M	\$107M	\$98.6M	\$90.9M	\$84.3M	\$67.7M	\$52.3M	\$39.5M
Prior Year	\$136M	\$137M	\$132M	\$133M	\$129M	\$134M	\$132M	\$124M	\$123M	\$115M	\$109M	\$98.8M	\$86.7M
Percent Change from Prior Year	-36%	-43%	-42%	-44%	-38%	-31%	-19%	-21%	-26%	-27%	-38%	-47%	-54%

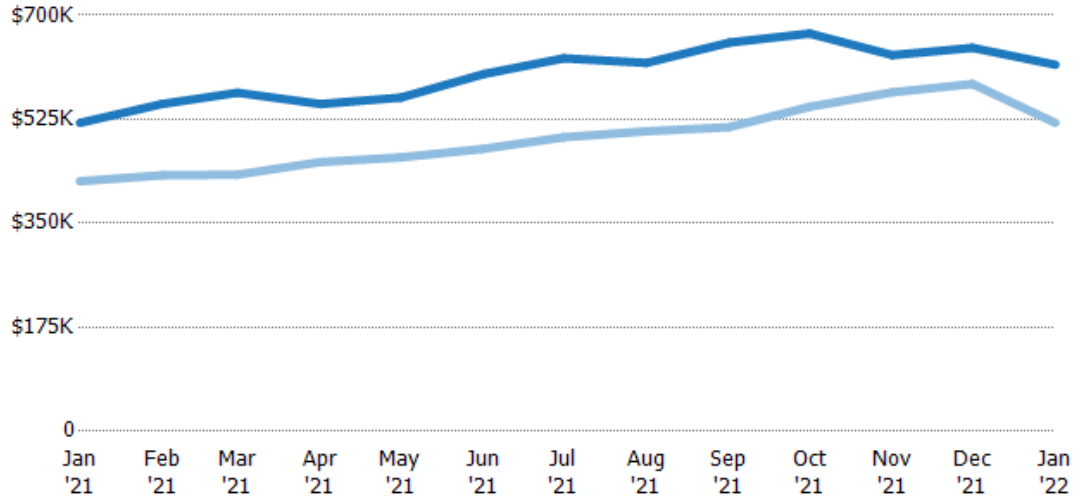
## Average Listing Price

The average listing price of active residential listings at the end of each month.

### Filters Used

State: VT  
 County: Bennington County, Vermont  
 Property Type: Condo/Townhouse/Apt., Single Family

Month/Year	Price	% Chg.
Jan '22	\$617K	18.8%
Jan '21	\$519K	23.3%
Jan '20	\$421K	-10.4%



Current Year	\$519K	\$551K	\$570K	\$551K	\$561K	\$601K	\$628K	\$620K	\$654K	\$669K	\$633K	\$645K	\$617K
Prior Year	\$421K	\$431K	\$432K	\$453K	\$461K	\$475K	\$495K	\$505K	\$512K	\$546K	\$570K	\$584K	\$519K
Percent Change from Prior Year	23%	28%	32%	22%	22%	26%	27%	23%	28%	23%	11%	10%	19%

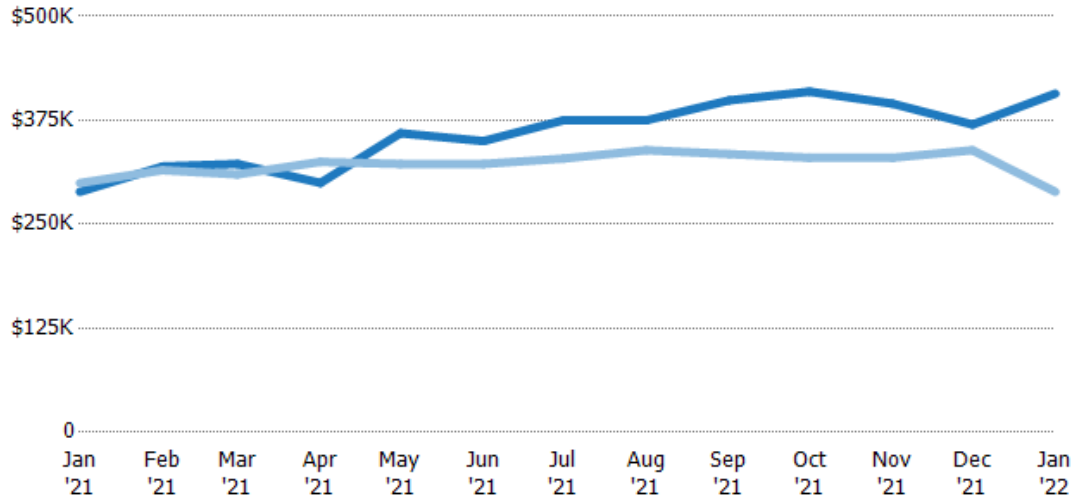
## Median Listing Price

The median listing price of active residential listings at the end of each month.

### Filters Used

State: VT  
 County: Bennington County, Vermont  
 Property Type: Condo/Townhouse/Apt., Single Family

Month/Year	Price	% Chg.
Jan '22	\$407K	40.8%
Jan '21	\$289K	-3.5%
Jan '20	\$300K	-3.5%



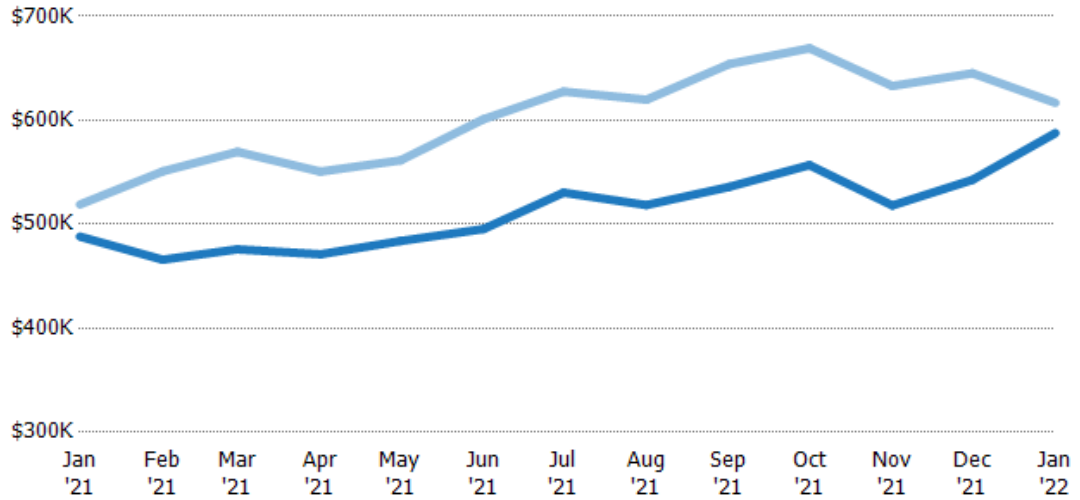
Current Year	\$289K	\$320K	\$323K	\$300K	\$359K	\$350K	\$375K	\$375K	\$399K	\$409K	\$395K	\$370K	\$407K
Prior Year	\$300K	\$315K	\$310K	\$325K	\$323K	\$323K	\$329K	\$339K	\$334K	\$330K	\$330K	\$339K	\$289K
Percent Change from Prior Year	-4%	1%	4%	-8%	11%	9%	14%	11%	19%	24%	20%	9%	41%

## Average Listing Price vs Average Est Value

The average listing price as a percentage of the average AVM or RVM® valuation estimate for active listings each month.

### Filters Used

State: VT  
 County: Bennington County,  
 Vermont  
 Property Type:  
 Condo/Townhouse/Apt., Single  
 Family



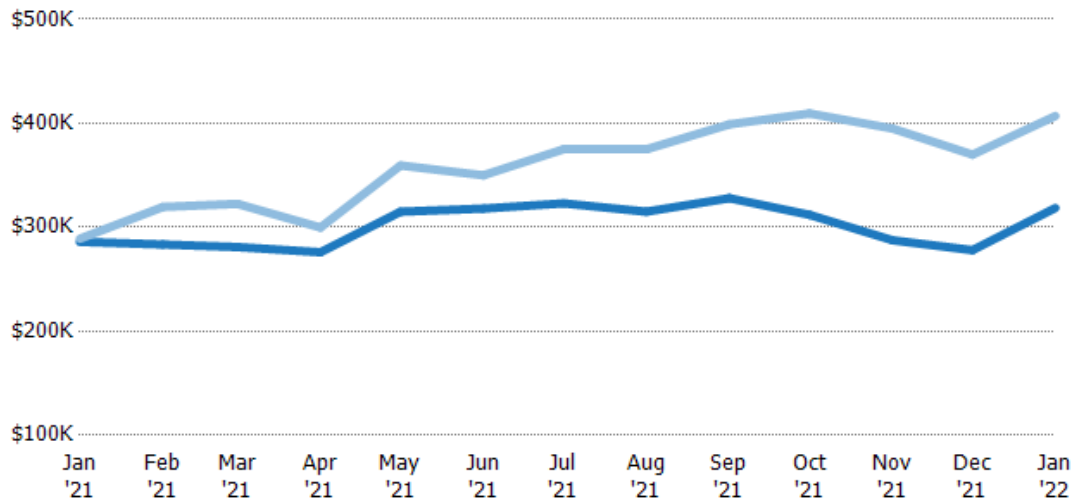
	Jan '21	Feb '21	Mar '21	Apr '21	May '21	Jun '21	Jul '21	Aug '21	Sep '21	Oct '21	Nov '21	Dec '21	Jan '22
Avg Est Value	\$488K	\$466K	\$476K	\$471K	\$484K	\$495K	\$530K	\$518K	\$536K	\$557K	\$518K	\$543K	\$588K
Avg Listing Price	\$519K	\$551K	\$570K	\$551K	\$561K	\$601K	\$628K	\$620K	\$654K	\$669K	\$633K	\$645K	\$617K
Avg Listing Price as a % of Avg Est Value	106%	118%	120%	117%	116%	121%	118%	120%	122%	120%	122%	119%	105%

## Median Listing Price vs Median Est Value

The median listing price as a percentage of the median AVM or RVM® valuation estimate for active listings each month.

### Filters Used

State: VT  
 County: Bennington County,  
 Vermont  
 Property Type:  
 Condo/Townhouse/Apt., Single  
 Family



	Jan '21	Feb '21	Mar '21	Apr '21	May '21	Jun '21	Jul '21	Aug '21	Sep '21	Oct '21	Nov '21	Dec '21	Jan '22
Median Est Value	\$286K	\$284K	\$281K	\$276K	\$315K	\$318K	\$323K	\$315K	\$328K	\$312K	\$288K	\$278K	\$319K
Median Listing Price	\$289K	\$320K	\$323K	\$300K	\$359K	\$350K	\$375K	\$375K	\$399K	\$409K	\$395K	\$370K	\$407K
Med Listing Price as a % of Med Est Value	101%	113%	115%	109%	114%	110%	116%	119%	122%	131%	137%	133%	128%

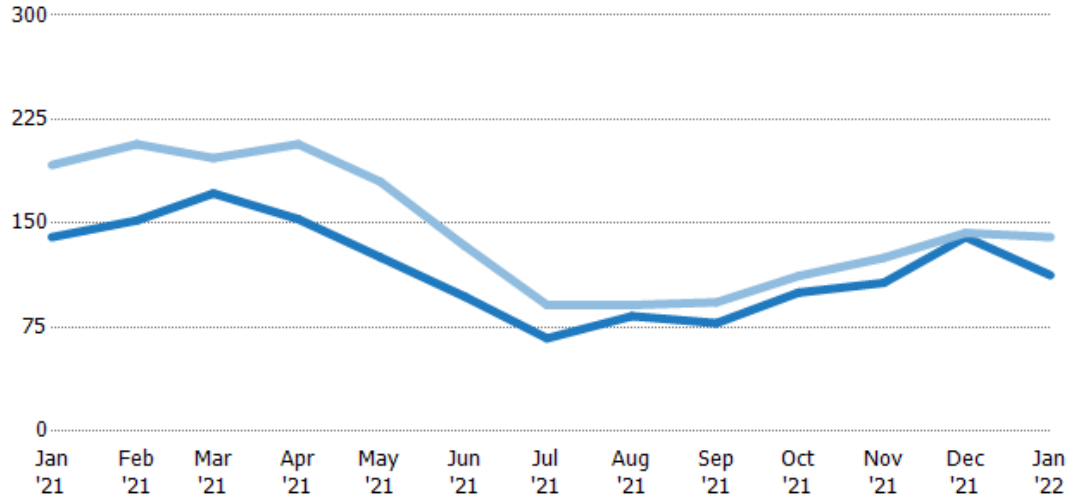
## Median Days in RPR

The median number of days between when residential properties are first displayed as active listings in RPR and when accepted offers have been noted in RPR.

### Filters Used

State: VT  
 County: Bennington County, Vermont  
 Property Type: Condo/Townhouse/Apt., Single Family

Month/Year	Days	% Chg.
Jan '22	113	-19.6%
Jan '21	140	-27.1%
Jan '20	192	-10.2%



	Jan '21	Feb '21	Mar '21	Apr '21	May '21	Jun '21	Jul '21	Aug '21	Sep '21	Oct '21	Nov '21	Dec '21	Jan '22
Current Year	140	152	172	153	126	97	67	83	78	100	107	140	113
Prior Year	192	207	197	207	180	134	91	91	93	112	125	143	140
Percent Change from Prior Year	-27%	-27%	-13%	-26%	-30%	-27%	-26%	-9%	-16%	-11%	-14%	-2%	-20%

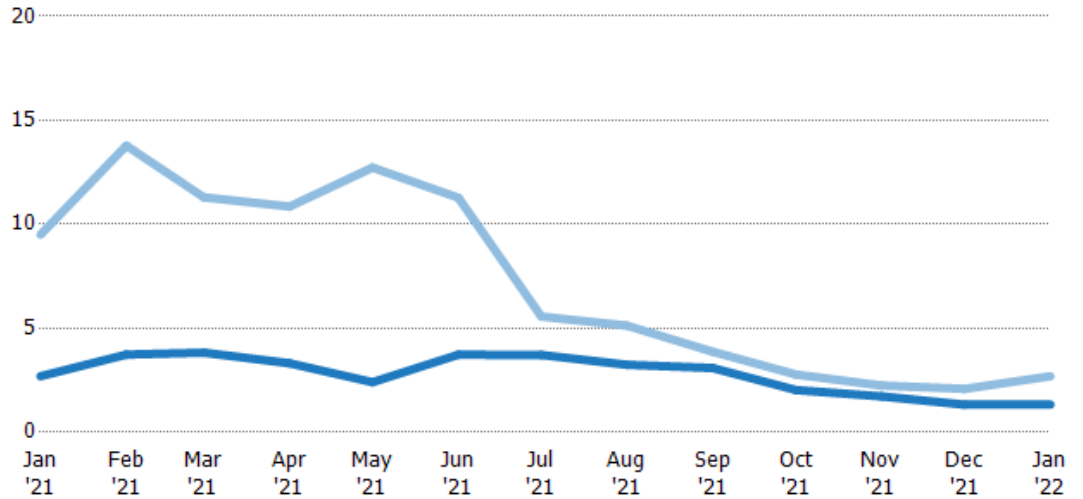
## Months of Inventory

The number of months it would take to exhaust active listings at the current sales rate.

### Filters Used

State: VT  
 County: Bennington County, Vermont  
 Property Type: Condo/Townhouse/Apt., Single Family

Month/Year	Months	% Chg.
Jan '22	1.33	-50.5%
Jan '21	2.69	-71.6%
Jan '20	9.5	0.3%



	Jan '21	Feb '21	Mar '21	Apr '21	May '21	Jun '21	Jul '21	Aug '21	Sep '21	Oct '21	Nov '21	Dec '21	Jan '22
Current Year	2.69	3.74	3.83	3.32	2.41	3.73	3.72	3.24	3.09	2.03	1.73	1.33	1.33
Prior Year	9.5	13.8	11.3	10.9	12.7	11.3	5.56	5.13	3.87	2.78	2.25	2.09	2.69
Percent Change from Prior Year	-72%	-73%	-66%	-69%	-81%	-67%	-33%	-37%	-20%	-27%	-23%	-36%	-50%

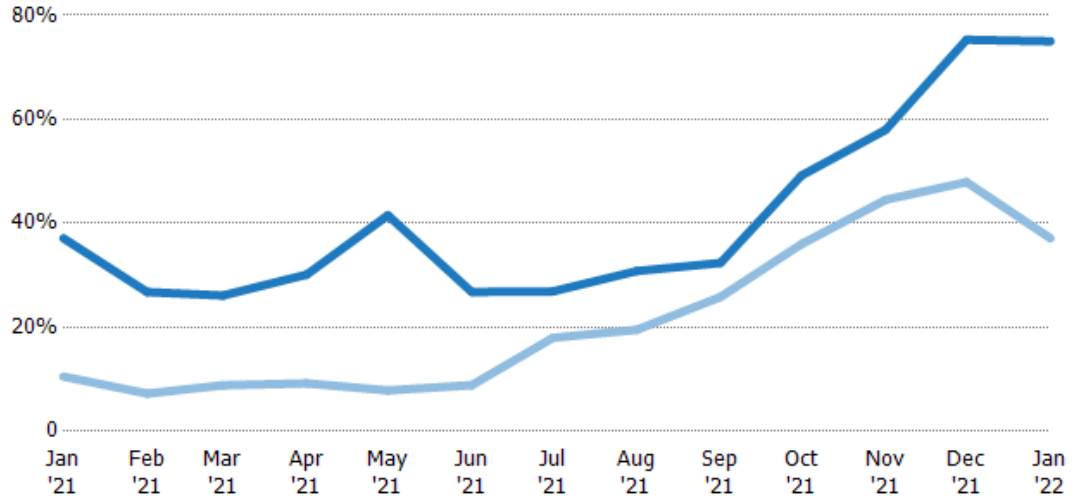
## Absorption Rate

The percentage of inventory sold per month.

### Filters Used

State: VT  
 County: Bennington County, Vermont  
 Property Type: Condo/Townhouse/Apt., Single Family

Month/Year	Rate	Chg.
Jan '22	75%	-37.9%
Jan '21	37%	-26.6%
Jan '20	11%	-0.3%



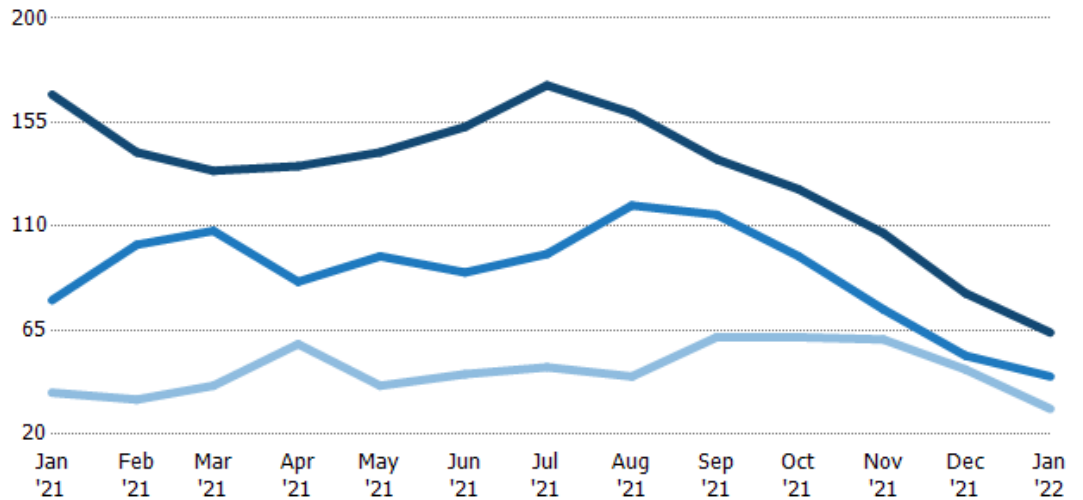
	Jan '21	Feb '21	Mar '21	Apr '21	May '21	Jun '21	Jul '21	Aug '21	Sep '21	Oct '21	Nov '21	Dec '21	Jan '22
Current Year	37%	27%	26%	30%	42%	27%	27%	31%	32%	49%	58%	75%	75%
Prior Year	11%	7%	9%	9%	8%	9%	18%	20%	26%	36%	45%	48%	37%
Change from Prior Year	-27%	-20%	-17%	-21%	-34%	-18%	-9%	-11%	-7%	-13%	-13%	-27%	-38%

## Active/Pending/Sold Units

The number of residential properties that were Active, Pending and Sold each month.

### Filters Used

State: VT  
 County: Bennington County, Vermont  
 Property Type: Condo/Townhouse/Apt., Single Family



	Jan '21	Feb '21	Mar '21	Apr '21	May '21	Jun '21	Jul '21	Aug '21	Sep '21	Oct '21	Nov '21	Dec '21	Jan '22
Active	167	142	134	136	142	153	171	159	139	126	107	81	64
Pending	78	102	108	86	97	90	98	119	115	97	74	54	45
Sold	38	35	41	59	41	46	49	45	62	62	61	48	31

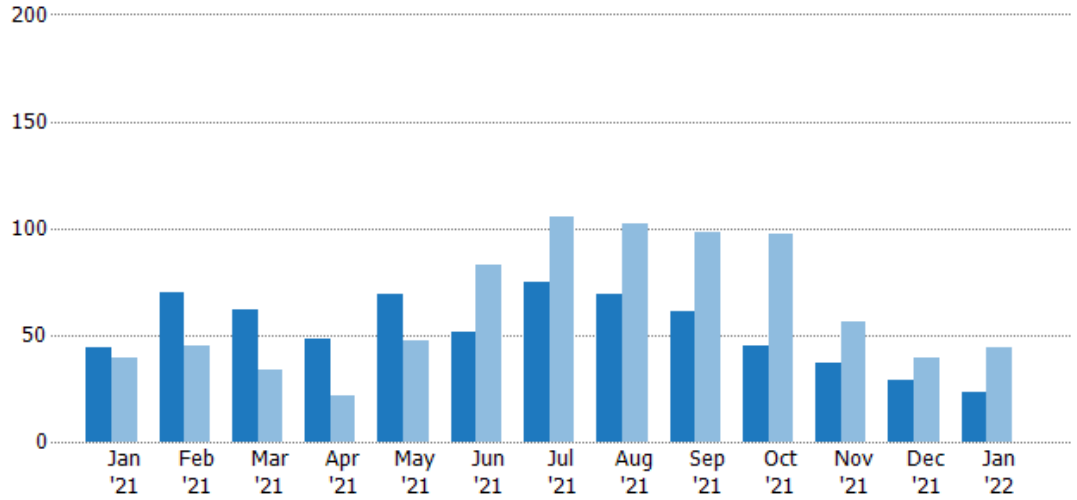
## New Pending Sales

The number of residential properties with accepted offers that were added each month.

### Filters Used

State: VT  
 County: Bennington County, Vermont  
 Property Type: Condo/Townhouse/Apt., Single Family

Month/Year	Count	% Chg.
Jan '22	23	-47.7%
Jan '21	44	12.8%
Jan '20	39	-23.1%



Current Year	44	70	62	48	69	51	75	69	61	45	37	29	23
Prior Year	39	45	34	22	47	83	105	102	98	97	56	39	44
Percent Change from Prior Year	13%	56%	82%	118%	47%	-39%	-29%	-32%	-38%	-54%	-34%	-26%	-48%

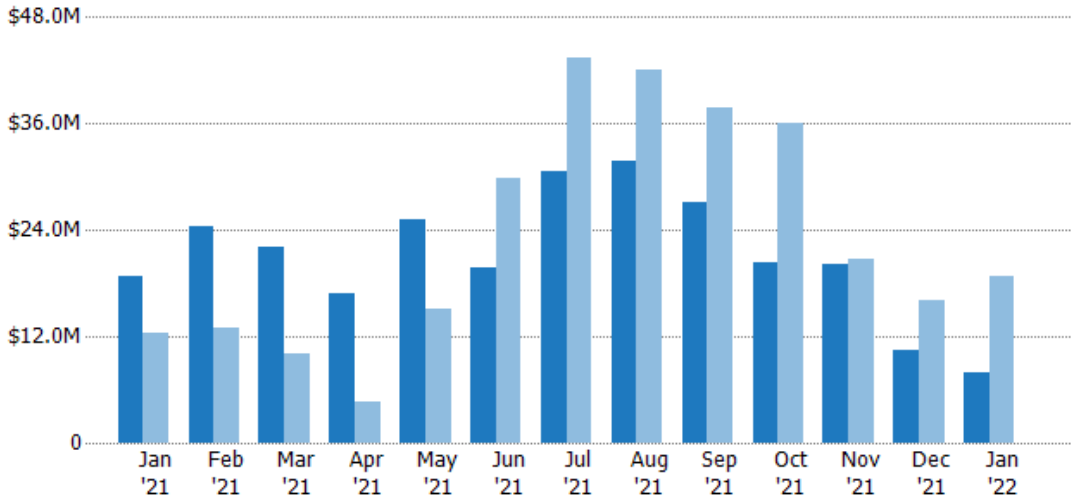
## New Pending Sales Volume

The sum of the sales price of residential properties with accepted offers that were added each month.

### Filters Used

State: VT  
 County: Bennington County, Vermont  
 Property Type: Condo/Townhouse/Apt., Single Family

Month/Year	Volume	% Chg.
Jan '22	\$7.82M	-58.4%
Jan '21	\$18.8M	52.2%
Jan '20	\$12.4M	-41.8%



Current Year	\$18.8M	\$24.4M	\$22M	\$16.9M	\$25.2M	\$19.8M	\$30.6M	\$31.7M	\$27.2M	\$20.4M	\$20.1M	\$10.4M	\$7.82M
Prior Year	\$12.4M	\$12.9M	\$10.1M	\$4.55M	\$15.1M	\$29.8M	\$43.4M	\$42M	\$37.8M	\$36M	\$20.7M	\$16M	\$18.8M
Percent Change from Prior Year	52%	90%	118%	271%	67%	-34%	-29%	-25%	-28%	-43%	-3%	-35%	-58%



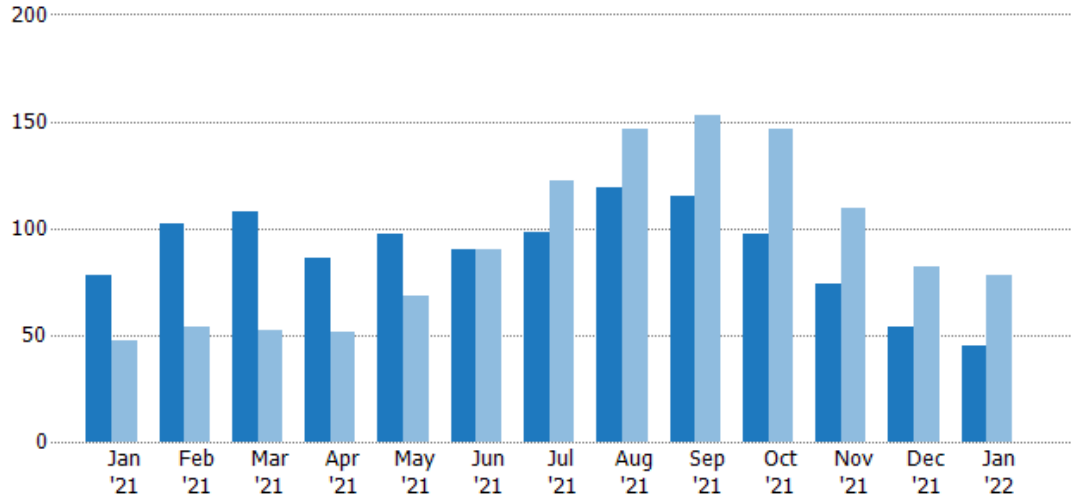
## Pending Sales

The number of residential properties with accepted offers that were available at the end each month.

### Filters Used

State: VT  
 County: Bennington County, Vermont  
 Property Type: Condo/Townhouse/Apt., Single Family

Month/Year	Count	% Chg.
Jan '22	45	-42.3%
Jan '21	78	66%
Jan '20	47	-12.8%



Current Year	78	102	108	86	97	90	98	119	115	97	74	54	45
Prior Year	47	54	52	51	68	90	122	146	153	146	109	82	78
Percent Change from Prior Year	66%	89%	108%	69%	43%	0%	-20%	-18%	-25%	-34%	-32%	-34%	-42%

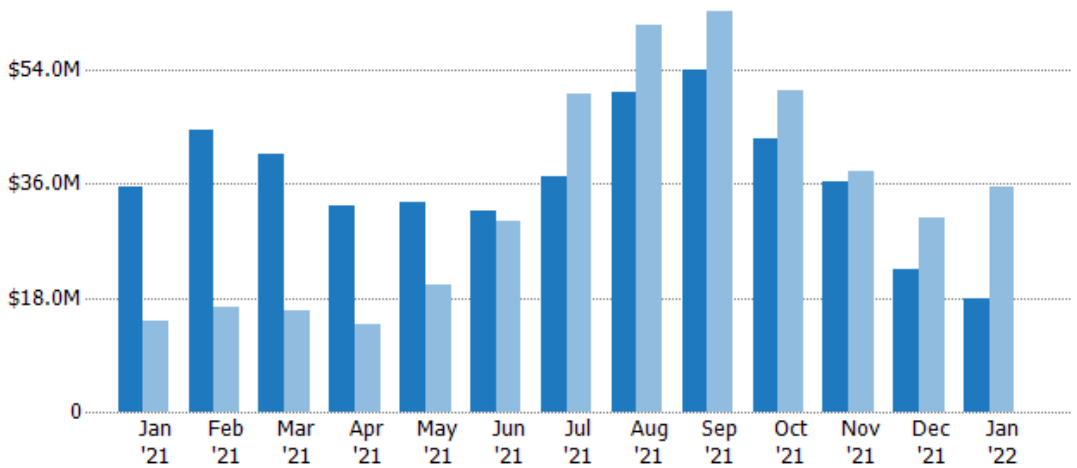
## Pending Sales Volume

The sum of the sales price of residential properties with accepted offers that were available at the end of each month.

### Filters Used

State: VT  
 County: Bennington County, Vermont  
 Property Type: Condo/Townhouse/Apt., Single Family

Month/Year	Volume	% Chg.
Jan '22	\$17.9M	-49.3%
Jan '21	\$35.4M	145.4%
Jan '20	\$14.4M	-21.9%



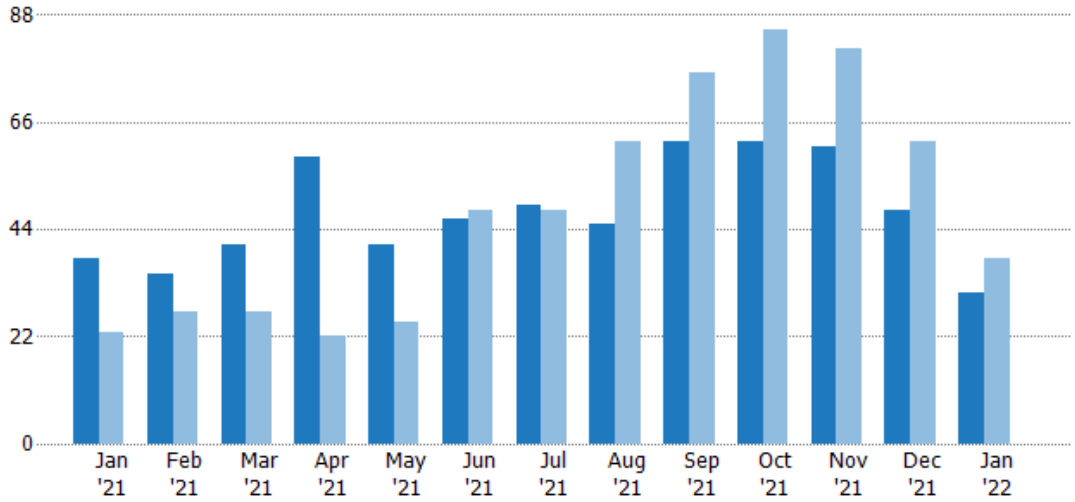
Current Year	\$35.4M	\$44.4M	\$40.6M	\$32.4M	\$33.1M	\$31.8M	\$37.1M	\$50.5M	\$53.9M	\$43.1M	\$36.4M	\$22.6M	\$17.9M
Prior Year	\$14.4M	\$16.6M	\$16.1M	\$13.7M	\$20.1M	\$30.1M	\$50.3M	\$61M	\$63.3M	\$50.7M	\$37.9M	\$30.5M	\$35.4M
Percent Change from Prior Year	145%	168%	153%	137%	65%	6%	-26%	-17%	-15%	-15%	-4%	-26%	-49%

## Closed Sales

The total number of residential properties sold each month.

### Filters Used

State: VT  
 County: Bennington County, Vermont  
 Property Type: Condo/Townhouse/Apt., Single Family



Month/Year	Count	% Chg.
Jan '22	31	-18.4%
Jan '21	38	65.2%
Jan '20	23	-39.1%

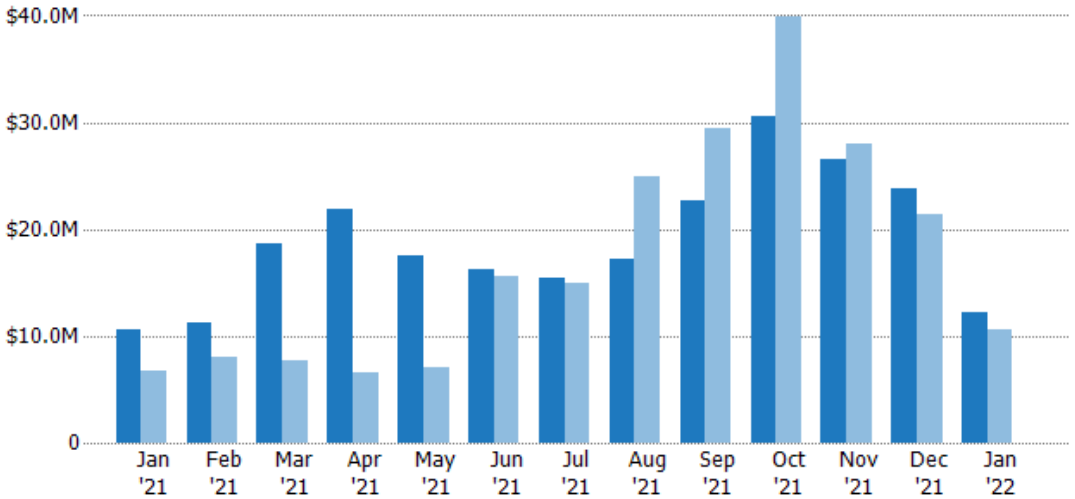
Current Year	38	35	41	59	41	46	49	45	62	62	61	48	31
Prior Year	23	27	27	22	25	48	48	62	76	85	81	62	38
Percent Change from Prior Year	65%	30%	52%	168%	64%	-4%	2%	-27%	-18%	-27%	-25%	-23%	-18%

## Closed Sales Volume

The sum of the sales price of residential properties sold each month.

### Filters Used

State: VT  
 County: Bennington County, Vermont  
 Property Type: Condo/Townhouse/Apt., Single Family



Month/Year	Volume	% Chg.
Jan '22	\$12.3M	15.3%
Jan '21	\$10.7M	57.7%
Jan '20	\$6.76M	-66.1%

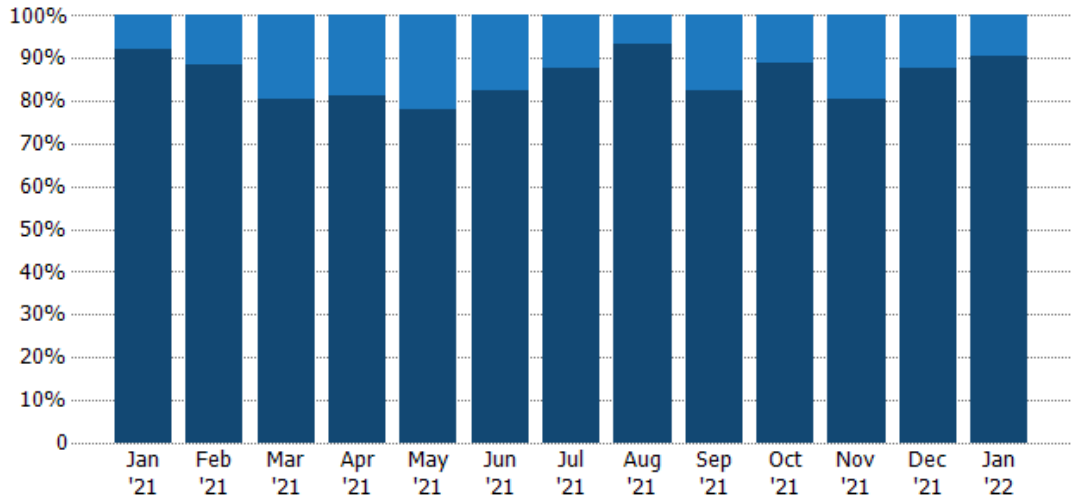
Current Year	\$10.7M	\$11.2M	\$18.7M	\$21.9M	\$17.4M	\$16.2M	\$15.5M	\$17.3M	\$22.6M	\$30.6M	\$26.6M	\$23.8M	\$12.3M
Prior Year	\$6.76M	\$7.98M	\$7.68M	\$6.62M	\$7.1M	\$15.5M	\$14.9M	\$25M	\$29.5M	\$40M	\$28M	\$21.5M	\$10.7M
Percent Change from Prior Year	58%	40%	143%	232%	146%	5%	4%	-31%	-23%	-23%	-5%	11%	15%

## Closed Sales by Property Type

The percentage of residential properties sold each month by property type.

### Filters Used

State: VT  
 County: Bennington County, Vermont  
 Property Type: Condo/Townhouse/Apt., Single Family



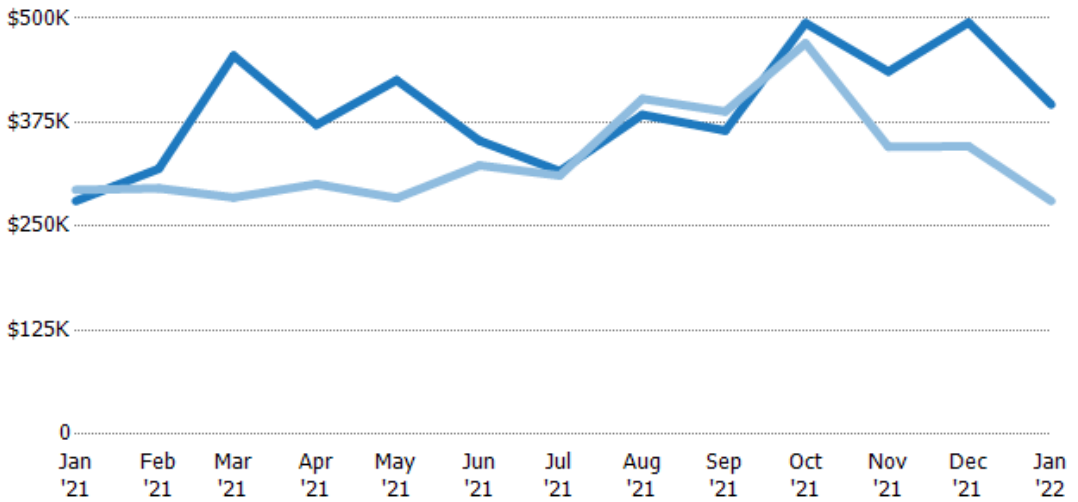
Condo/Townhouse	8%	11%	20%	19%	22%	17%	12%	7%	18%	11%	20%	13%	10%
Single Family Residence	92%	89%	80%	81%	78%	83%	88%	93%	82%	89%	80%	88%	90%

## Average Sales Price

The average sales price of the residential properties sold each month.

### Filters Used

State: VT  
 County: Bennington County, Vermont  
 Property Type: Condo/Townhouse/Apt., Single Family



Month/Year	Price	% Chg.
Jan '22	\$396K	41.4%
Jan '21	\$280K	-4.5%
Jan '20	\$294K	-44.2%

Current Year	\$280K	\$319K	\$455K	\$372K	\$426K	\$353K	\$316K	\$384K	\$365K	\$494K	\$436K	\$495K	\$396K
Prior Year	\$294K	\$296K	\$285K	\$301K	\$284K	\$323K	\$311K	\$403K	\$388K	\$470K	\$346K	\$346K	\$280K
Percent Change from Prior Year	-5%	8%	60%	24%	50%	9%	2%	-5%	-6%	5%	26%	43%	41%

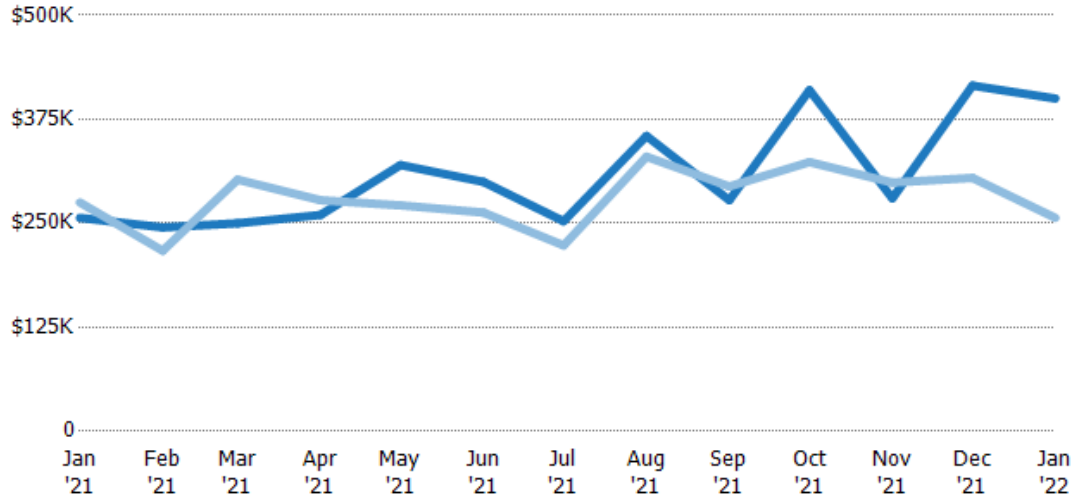
## Median Sales Price

The median sales price of the residential properties sold each month.

### Filters Used

State: VT  
 County: Bennington County, Vermont  
 Property Type: Condo/Townhouse/Apt., Single Family

Month/Year	Price	% Chg.
Jan '22	\$400K	55.9%
Jan '21	\$257K	-6.7%
Jan '20	\$275K	-41%



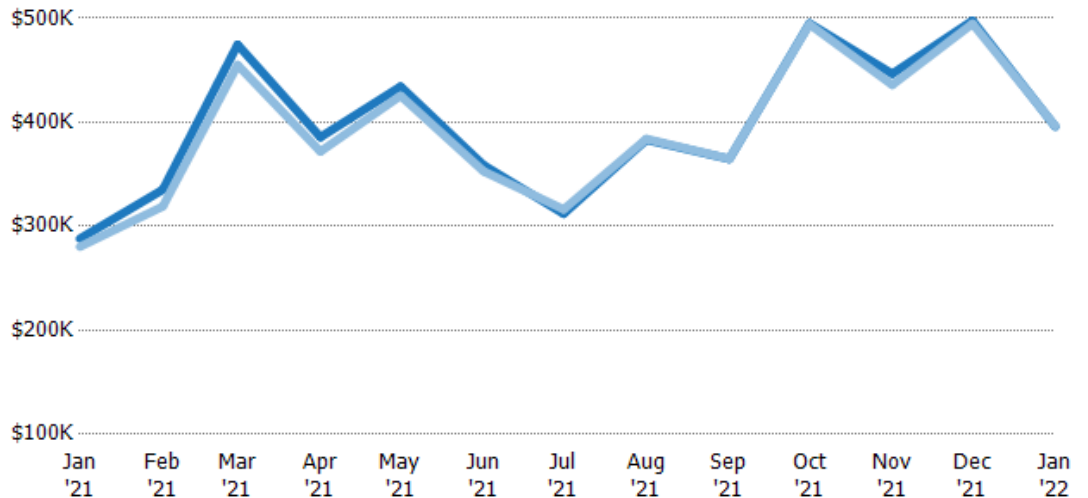
	Jan '21	Feb '21	Mar '21	Apr '21	May '21	Jun '21	Jul '21	Aug '21	Sep '21	Oct '21	Nov '21	Dec '21	Jan '22
Current Year	\$257K	\$245K	\$250K	\$260K	\$320K	\$300K	\$253K	\$355K	\$278K	\$410K	\$280K	\$416K	\$400K
Prior Year	\$275K	\$217K	\$303K	\$278K	\$272K	\$263K	\$223K	\$330K	\$294K	\$324K	\$299K	\$305K	\$257K
Percent Change from Prior Year	-7%	13%	-17%	-6%	18%	14%	13%	8%	-6%	27%	-6%	36%	56%

## Average Sales Price vs Average Listing Price

The average sales price as a percentage of the average listing price for properties sold each month.

### Filters Used

State: VT  
 County: Bennington County, Vermont  
 Property Type: Condo/Townhouse/Apt., Single Family



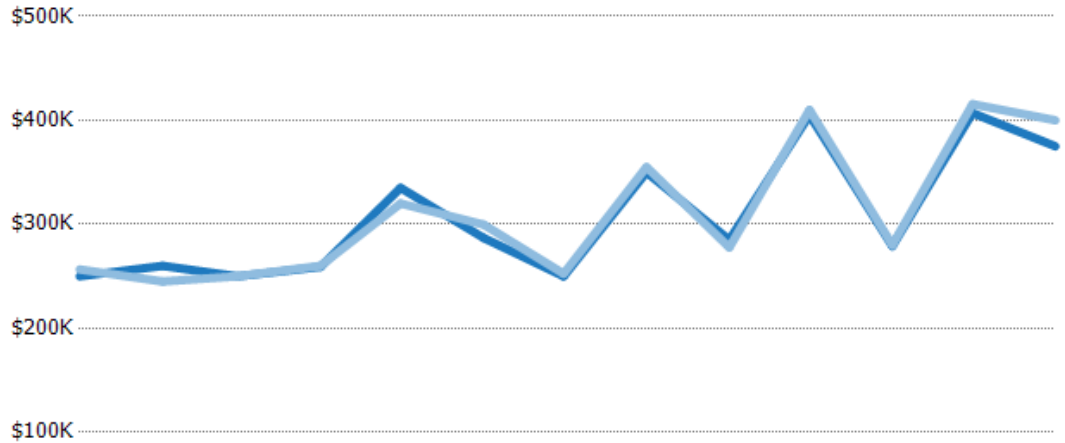
	Jan '21	Feb '21	Mar '21	Apr '21	May '21	Jun '21	Jul '21	Aug '21	Sep '21	Oct '21	Nov '21	Dec '21	Jan '22
Avg List Price	\$288K	\$335K	\$475K	\$386K	\$434K	\$359K	\$312K	\$383K	\$365K	\$495K	\$447K	\$498K	\$396K
Avg Sales Price	\$280K	\$319K	\$455K	\$372K	\$426K	\$353K	\$316K	\$384K	\$365K	\$494K	\$436K	\$495K	\$396K
Avg Sales Price as a % of Avg List Price	97%	95%	96%	96%	98%	98%	101%	100%	100%	100%	98%	99%	100%

## Median Sales Price vs Median Listing Price

The median sales price as a percentage of the median listing price for properties sold each month.

### Filters Used

State: VT  
 County: Bennington County, Vermont  
 Property Type: Condo/Townhouse/Apt., Single Family



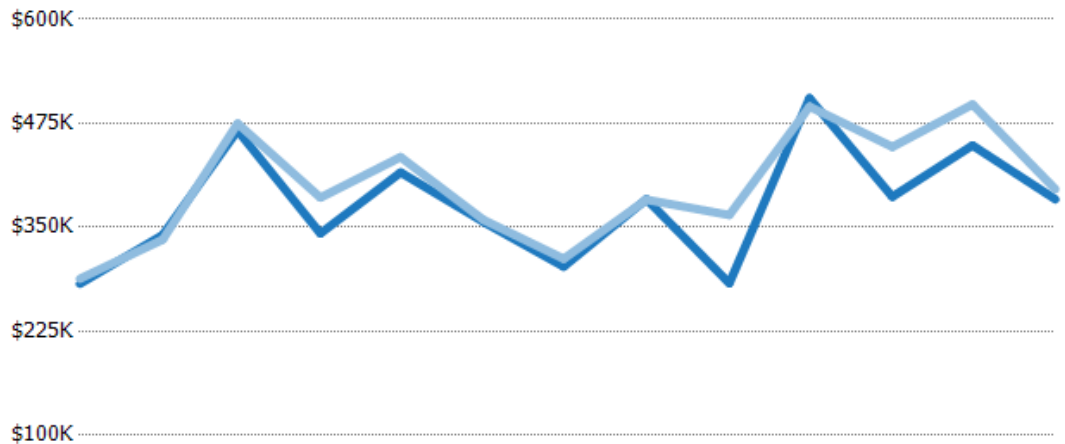
	Jan '21	Feb '21	Mar '21	Apr '21	May '21	Jun '21	Jul '21	Aug '21	Sep '21	Oct '21	Nov '21	Dec '21	Jan '22
Median List Price	\$250K	\$260K	\$250K	\$259K	\$335K	\$287K	\$250K	\$350K	\$285K	\$405K	\$279K	\$407K	\$375K
Median Sales Price	\$257K	\$245K	\$250K	\$260K	\$320K	\$300K	\$253K	\$355K	\$278K	\$410K	\$280K	\$416K	\$400K
Med Sales Price as a % of Med List Price	103%	94%	100%	100%	96%	104%	101%	101%	97%	101%	100%	102%	107%

## Average Sales Price vs Average Est Value

The average sales price as a percentage of the average AVM or RVM® valuation estimate for properties sold each month.

### Filters Used

State: VT  
 County: Bennington County, Vermont  
 Property Type: Condo/Townhouse/Apt., Single Family



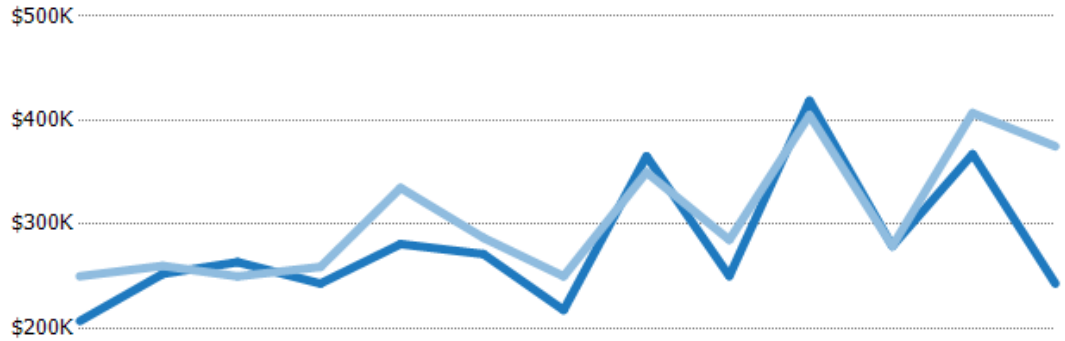
	Jan '21	Feb '21	Mar '21	Apr '21	May '21	Jun '21	Jul '21	Aug '21	Sep '21	Oct '21	Nov '21	Dec '21	Jan '22
Avg Est Value	\$282K	\$341K	\$466K	\$343K	\$416K	\$356K	\$303K	\$384K	\$283K	\$505K	\$387K	\$448K	\$384K
Avg Sales Price	\$288K	\$335K	\$475K	\$386K	\$434K	\$359K	\$312K	\$383K	\$365K	\$495K	\$447K	\$498K	\$396K
Avg Sales Price as a % of Avg Est Value	102%	98%	102%	113%	104%	101%	103%	100%	129%	98%	115%	111%	103%

## Median Sales Price vs Median Est Value

The median sales price as a percent of the median AVM or RVM® valuation estimate for properties sold each month.

### Filters Used

State: VT  
 County: Bennington County, Vermont  
 Property Type: Condo/Townhouse/Apt., Single Family



	Jan '21	Feb '21	Mar '21	Apr '21	May '21	Jun '21	Jul '21	Aug '21	Sep '21	Oct '21	Nov '21	Dec '21	Jan '22
Median Est Value	\$207K	\$252K	\$264K	\$243K	\$281K	\$271K	\$217K	\$365K	\$250K	\$419K	\$279K	\$368K	\$243K
Median Sales Price	\$250K	\$260K	\$250K	\$259K	\$335K	\$287K	\$250K	\$350K	\$285K	\$405K	\$279K	\$407K	\$375K
Med Sales Price as a % of Med Est Value	121%	103%	95%	107%	119%	106%	115%	96%	114%	97%	100%	111%	154%