

Summary of Key Listing and Sales Metrics

A summary of the key metrics selected to be included in the report. MLS sources where licensed.

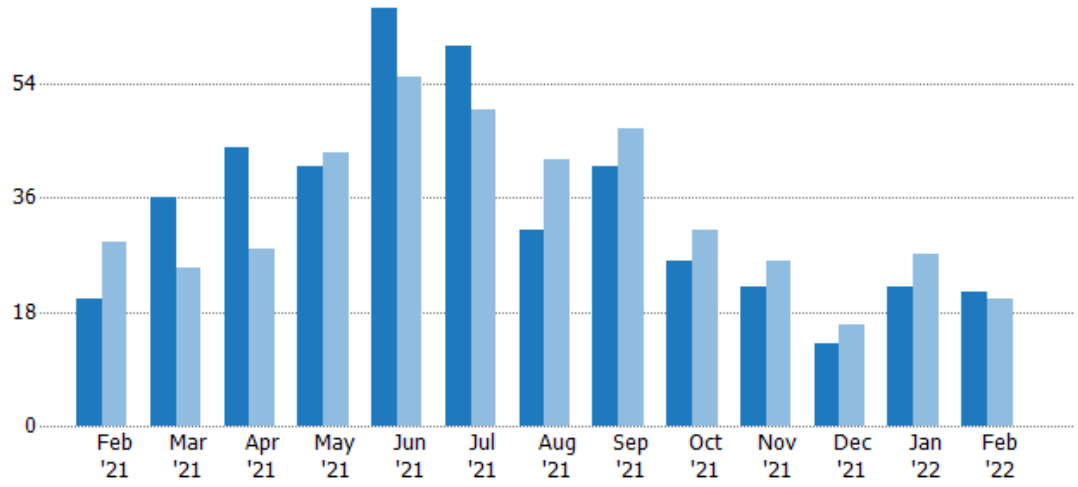
Key Metrics	Feb 2022	Feb 2021	+ / -	YTD 2022	YTD 2021	+ / -
Listing Activity Charts Metrics						
New Listing Count	21	20	+5%	43	47	-8.5%
New Listing Volume	\$9,880,500	\$8,411,772	+17.5%	\$18,237,400	\$17,297,972	+5.4%
Active Listing Count	26	92	-71.7%	N/A	N/A	
Active Listing Volume	\$15,724,600	\$45,228,799	-65.2%	N/A	N/A	
Average Listing Price	\$604,792	\$491,617	+23%	\$579,970	\$492,326	+17.8%
Median Listing Price	\$437,400	\$345,000	+26.8%	\$407,277	\$350,233	+16.3%
Median Days in RPR	26	159.5	-83.7%	69.55	148.28	-53.1%
Months of Inventory	1.4	3.8	-62.3%	1.3	6.7	-80.1%
Absorption Rate	69.23%	26.09%	+43.1%	75.41%	15.03%	+60.4%
Sales Activity Charts Metrics						
New Pending Sales Count	3	29	-89.7%	17	58	-70.7%
New Pending Sales Volume	\$824,900	\$12,197,672	-93.2%	\$5,961,900	\$22,841,072	-73.9%
Pending Sales Count	11	54	-79.6%	N/A	N/A	
Pending Sales Volume	\$3,029,900	\$22,115,972	-86.3%	N/A	N/A	
Closed Sales Count	13	22	-40.9%	31	46	-32.6%
Closed Sales Volume	\$5,232,100	\$6,187,900	-15.4%	\$11,703,894	\$13,721,050	-14.7%
Average Sales Price	\$402,469	\$281,268	+43.1%	\$377,545	\$298,284	+26.6%
Median Sales Price	\$346,600	\$259,000	+33.8%	\$347,123	\$272,761	+27.3%

New Listings

The number of new residential listings that were added each month.

Filters Used

State: VT
 County: Addison County, Vermont
 Property Type:
 Condo/Townhouse/Apt., Single Family



Month/Year	Count	% Chg.
Feb '22	21	5%
Feb '21	20	-31%
Feb '20	29	-24.1%

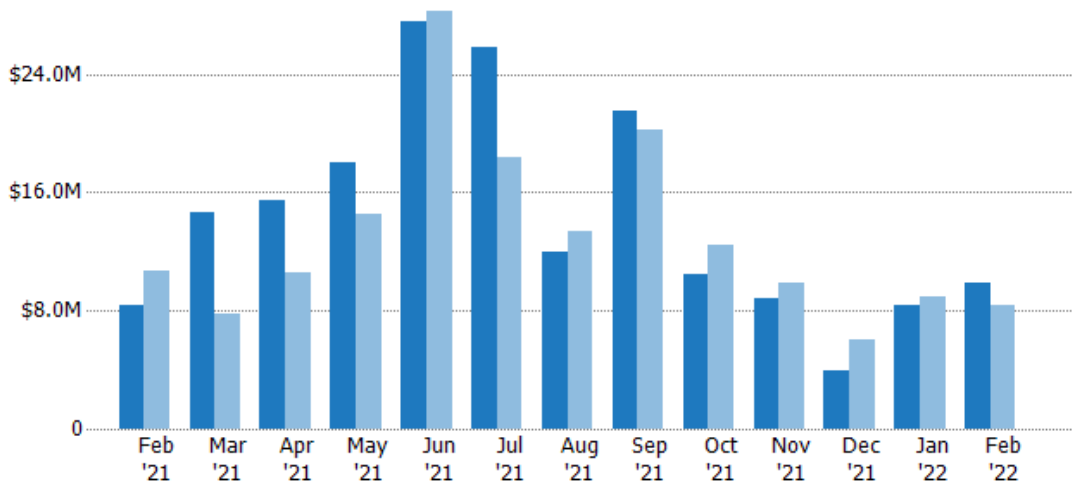
	Feb '21	Mar '21	Apr '21	May '21	Jun '21	Jul '21	Aug '21	Sep '21	Oct '21	Nov '21	Dec '21	Jan '22	Feb '22
Current Year	20	36	44	41	66	60	31	41	26	22	13	22	21
Prior Year	29	25	28	43	55	50	42	47	31	26	16	27	20
Percent Change from Prior Year	-31%	44%	57%	-5%	20%	20%	-26%	-13%	-16%	-15%	-19%	-19%	5%

New Listing Volume

The sum of the listing price of residential listings that were added each month.

Filters Used

State: VT
 County: Addison County, Vermont
 Property Type:
 Condo/Townhouse/Apt., Single Family



Month/Year	Volume	% Chg.
Feb '22	\$9.88M	17.5%
Feb '21	\$8.41M	-21%
Feb '20	\$10.6M	-22.9%

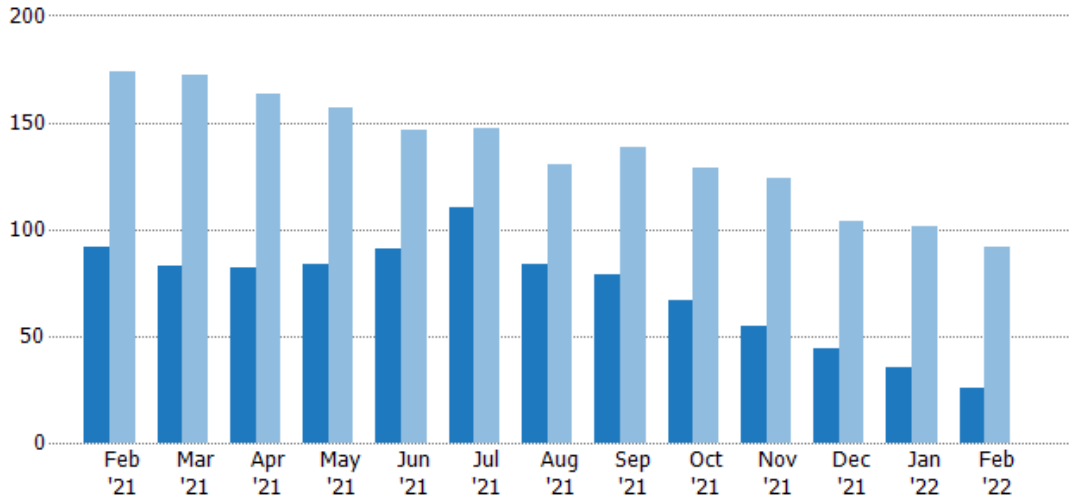
	Feb '21	Mar '21	Apr '21	May '21	Jun '21	Jul '21	Aug '21	Sep '21	Oct '21	Nov '21	Dec '21	Jan '22	Feb '22
Current Year	\$8.41M	\$14.6M	\$15.5M	\$18M	\$27.5M	\$25.8M	\$12M	\$21.5M	\$10.4M	\$8.86M	\$3.91M	\$8.36M	\$9.88M
Prior Year	\$10.6M	\$7.79M	\$10.6M	\$14.6M	\$28.2M	\$18.3M	\$13.4M	\$20.2M	\$12.5M	\$9.83M	\$6.01M	\$8.89M	\$8.41M
Percent Change from Prior Year	-21%	88%	47%	23%	-3%	41%	-10%	6%	-16%	-10%	-35%	-6%	17%

Active Listings

The number of active residential listings at the end of each month.

Filters Used

State: VT
 County: Addison County, Vermont
 Property Type:
 Condo/Townhouse/Apt., Single Family



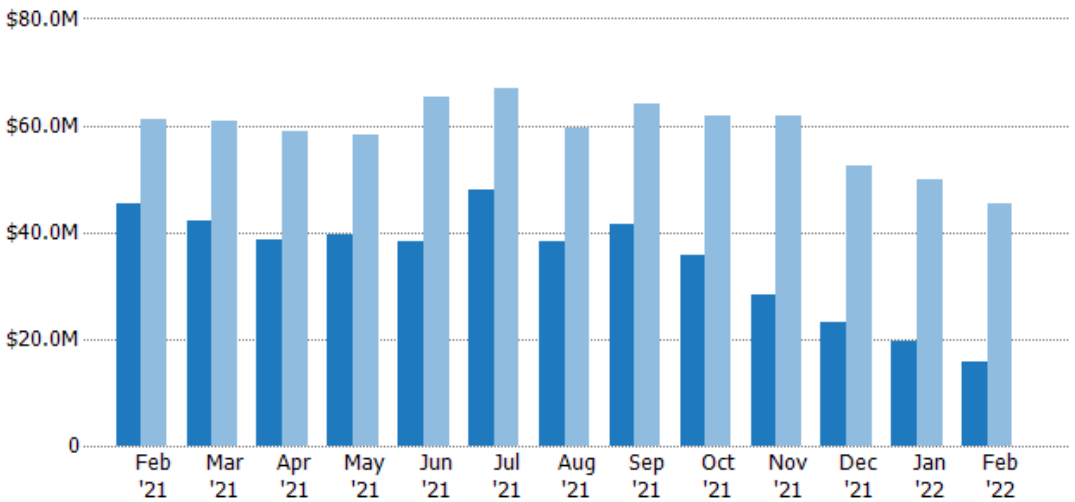
	Feb '21	Mar '21	Apr '21	May '21	Jun '21	Jul '21	Aug '21	Sep '21	Oct '21	Nov '21	Dec '21	Jan '22	Feb '22
Current Year	92	83	82	84	91	110	84	79	67	55	44	35	26
Prior Year	174	172	163	157	146	147	130	138	129	124	104	101	92
Percent Change from Prior Year	-47%	-52%	-50%	-46%	-38%	-25%	-35%	-43%	-48%	-56%	-58%	-65%	-72%

Active Listing Volume

The sum of the listing price of active residential listings at the end of each month.

Filters Used

State: VT
 County: Addison County, Vermont
 Property Type:
 Condo/Townhouse/Apt., Single Family



	Feb '21	Mar '21	Apr '21	May '21	Jun '21	Jul '21	Aug '21	Sep '21	Oct '21	Nov '21	Dec '21	Jan '22	Feb '22
Current Year	\$45.2M	\$42.2M	\$38.6M	\$39.4M	\$38.4M	\$48M	\$38.1M	\$41.6M	\$35.8M	\$28.2M	\$23.2M	\$19.7M	\$15.7M
Prior Year	\$61M	\$60.9M	\$59M	\$58.3M	\$65.5M	\$66.9M	\$59.4M	\$64.1M	\$61.7M	\$61.9M	\$52.5M	\$49.8M	\$45.2M
Percent Change from Prior Year	-26%	-31%	-35%	-32%	-41%	-28%	-36%	-35%	-42%	-54%	-56%	-61%	-65%

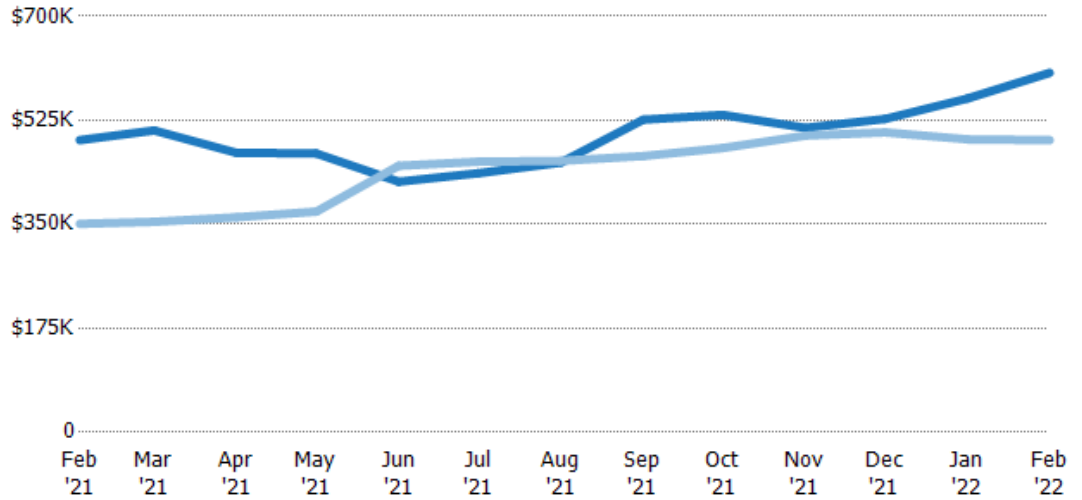
Average Listing Price

The average listing price of active residential listings at the end of each month.

Filters Used

State: VT
 County: Addison County, Vermont
 Property Type:
 Condo/Townhouse/Apt., Single Family

Month/Year	Price	% Chg.
Feb '22	\$605K	23%
Feb '21	\$492K	40.1%
Feb '20	\$351K	4.5%



Current Year	\$492K	\$508K	\$470K	\$469K	\$422K	\$436K	\$454K	\$526K	\$534K	\$512K	\$527K	\$562K	\$605K
Prior Year	\$351K	\$354K	\$362K	\$371K	\$448K	\$455K	\$457K	\$465K	\$478K	\$499K	\$505K	\$493K	\$492K
Percent Change from Prior Year	40%	43%	30%	26%	-6%	-4%	-1%	13%	12%	3%	4%	14%	23%

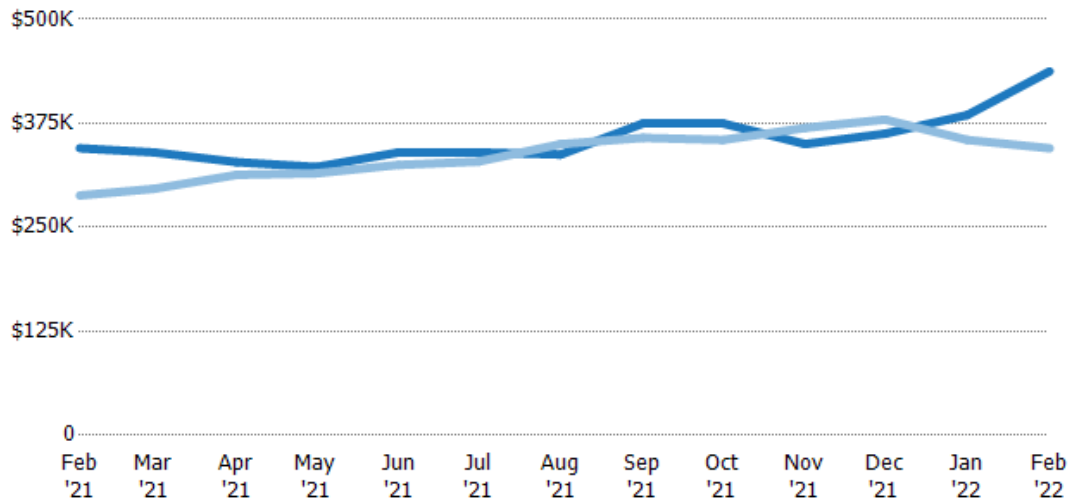
Median Listing Price

The median listing price of active residential listings at the end of each month.

Filters Used

State: VT
 County: Addison County, Vermont
 Property Type:
 Condo/Townhouse/Apt., Single Family

Month/Year	Price	% Chg.
Feb '22	\$437K	26.8%
Feb '21	\$345K	19.7%
Feb '20	\$288K	-0.4%



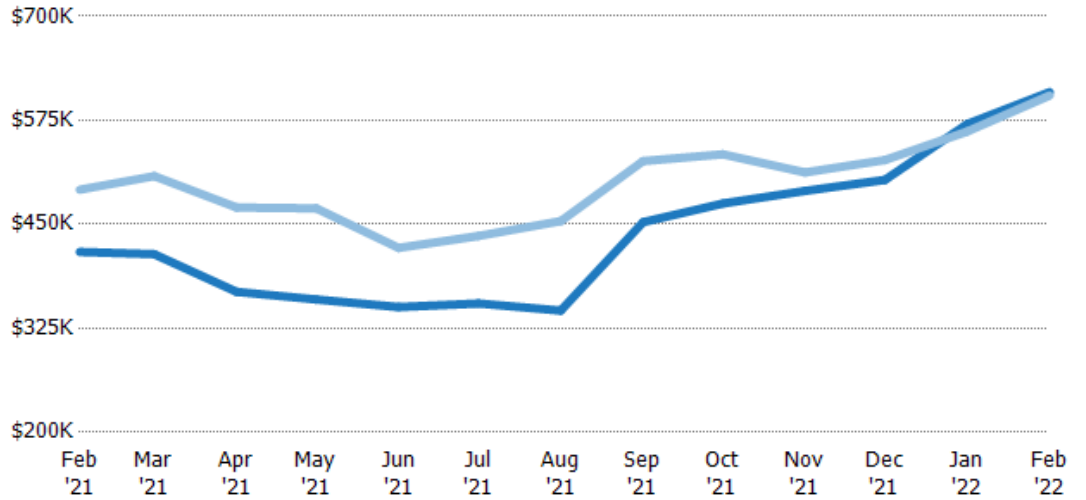
Current Year	\$345K	\$340K	\$328K	\$323K	\$340K	\$340K	\$337K	\$375K	\$375K	\$350K	\$362K	\$385K	\$437K
Prior Year	\$288K	\$296K	\$313K	\$315K	\$325K	\$329K	\$350K	\$358K	\$355K	\$370K	\$379K	\$355K	\$345K
Percent Change from Prior Year	20%	15%	5%	2%	5%	3%	-4%	5%	6%	-5%	-4%	8%	27%

Average Listing Price vs Average Est Value

The average listing price as a percentage of the average AVM or RVM® valuation estimate for active listings each month.

Filters Used

State: VT
 County: Addison County, Vermont
 Property Type:
 Condo/Townhouse/Apt., Single
 Family

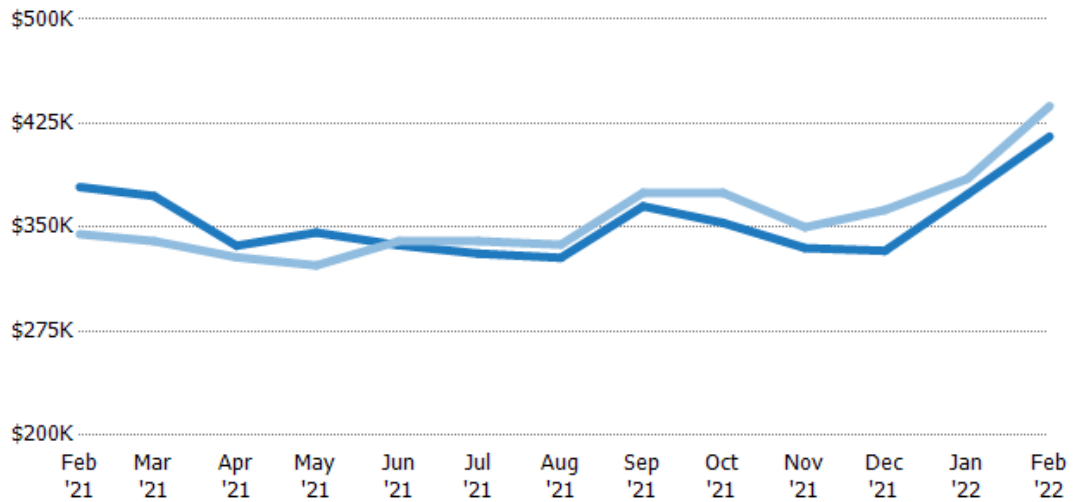


Median Listing Price vs Median Est Value

The median listing price as a percentage of the median AVM or RVM® valuation estimate for active listings each month.

Filters Used

State: VT
 County: Addison County, Vermont
 Property Type:
 Condo/Townhouse/Apt., Single
 Family

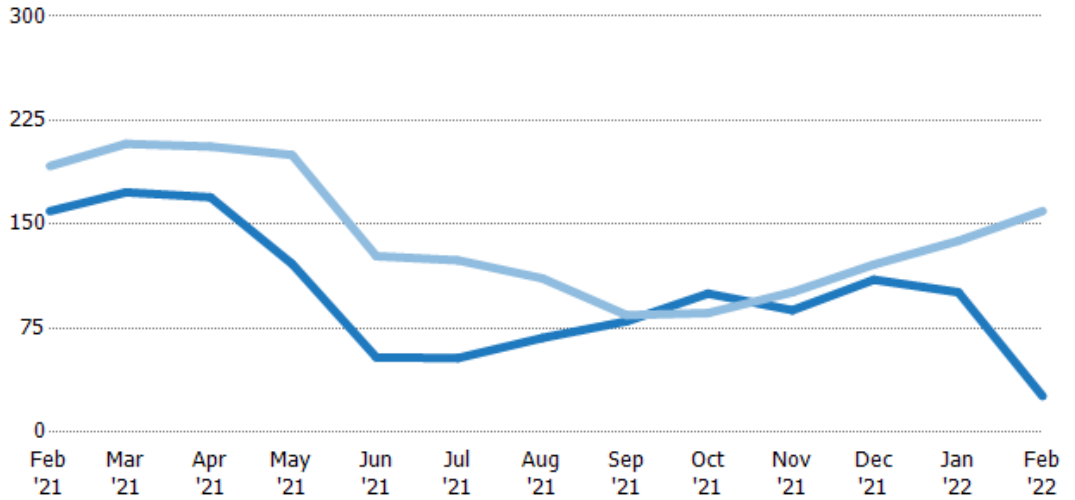


Median Days in RPR

The median number of days between when residential properties are first displayed as active listings in RPR and when accepted offers have been noted in RPR.

Filters Used

State: VT
 County: Addison County, Vermont
 Property Type:
 Condo/Townhouse/Apt., Single Family



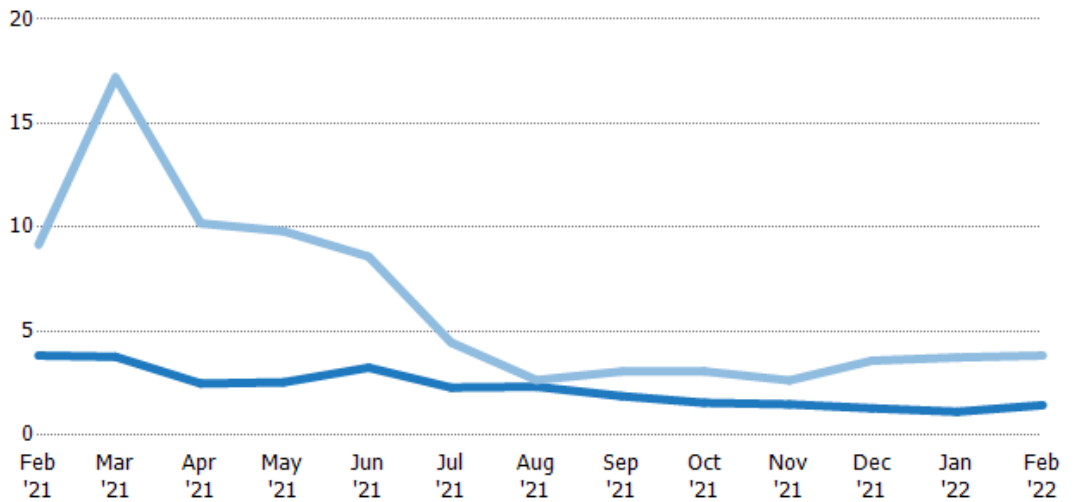
	Feb '21	Mar '21	Apr '21	May '21	Jun '21	Jul '21	Aug '21	Sep '21	Oct '21	Nov '21	Dec '21	Jan '22	Feb '22
Current Year	160	173	170	122	54	53.5	68	80	100	88	110	101	26
Prior Year	192	208	206	200	127	124	111	84.5	86	101	121	138	160
Percent Change from Prior Year	-17%	-17%	-18%	-39%	-57%	-57%	-39%	-5%	16%	-13%	-9%	-27%	-84%

Months of Inventory

The number of months it would take to exhaust active listings at the current sales rate.

Filters Used

State: VT
 County: Addison County, Vermont
 Property Type:
 Condo/Townhouse/Apt., Single Family



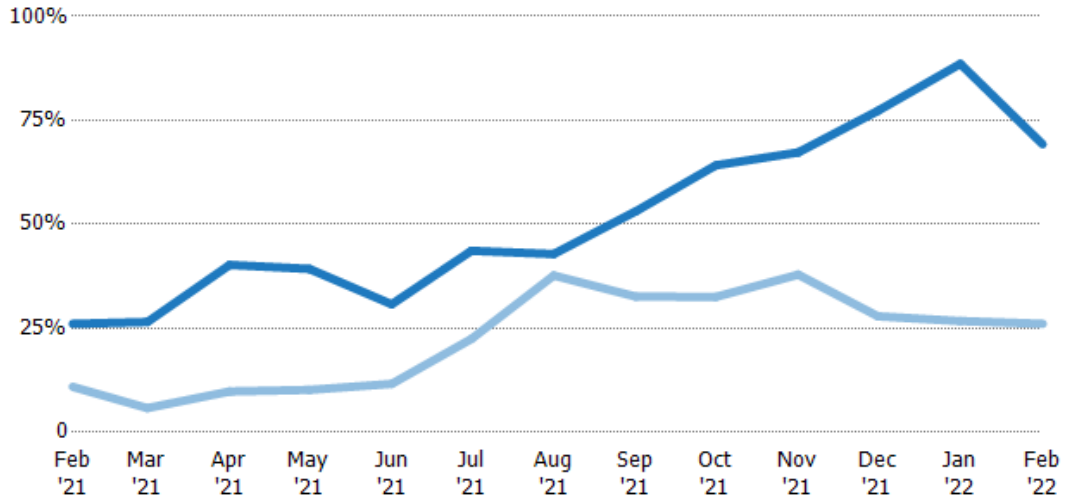
	Feb '21	Mar '21	Apr '21	May '21	Jun '21	Jul '21	Aug '21	Sep '21	Oct '21	Nov '21	Dec '21	Jan '22	Feb '22
Current Year	3.83	3.77	2.48	2.55	3.25	2.29	2.33	1.88	1.56	1.49	1.29	1.13	1.44
Prior Year	9.16	17.2	10.2	9.81	8.59	4.45	2.65	3.07	3.07	2.64	3.59	3.74	3.83
Percent Change from Prior Year	-58%	-78%	-76%	-74%	-62%	-49%	-12%	-39%	-49%	-44%	-64%	-70%	-62%

Absorption Rate

The percentage of inventory sold per month.

Filters Used

State: VT
 County: Addison County, Vermont
 Property Type: Condo/Townhouse/Apt., Single Family



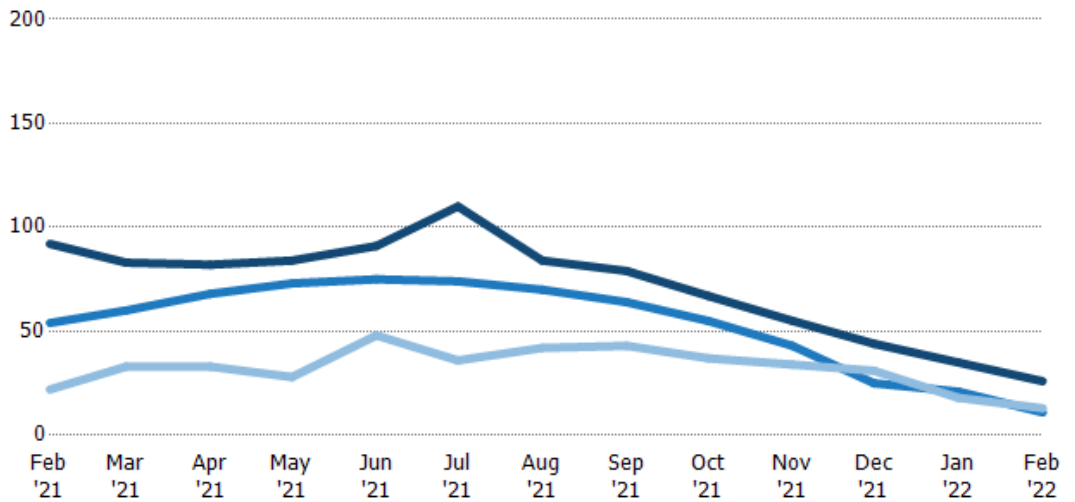
	Feb '21	Mar '21	Apr '21	May '21	Jun '21	Jul '21	Aug '21	Sep '21	Oct '21	Nov '21	Dec '21	Jan '22	Feb '22
Current Year	26%	27%	40%	39%	31%	44%	43%	53%	64%	67%	77%	89%	69%
Prior Year	11%	6%	10%	10%	12%	22%	38%	33%	33%	38%	28%	27%	26%
Change from Prior Year	-15%	-21%	-30%	-29%	-19%	-21%	-5%	-21%	-32%	-29%	-49%	-62%	-43%

Active/Pending/Sold Units

The number of residential properties that were Active, Pending and Sold each month.

Filters Used

State: VT
 County: Addison County, Vermont
 Property Type: Condo/Townhouse/Apt., Single Family



	Feb '21	Mar '21	Apr '21	May '21	Jun '21	Jul '21	Aug '21	Sep '21	Oct '21	Nov '21	Dec '21	Jan '22	Feb '22
Active	92	83	82	84	91	110	84	79	67	55	44	35	26
Pending	54	60	68	73	75	74	70	64	55	43	25	21	11
Sold	22	33	33	28	48	36	42	43	37	34	31	18	13

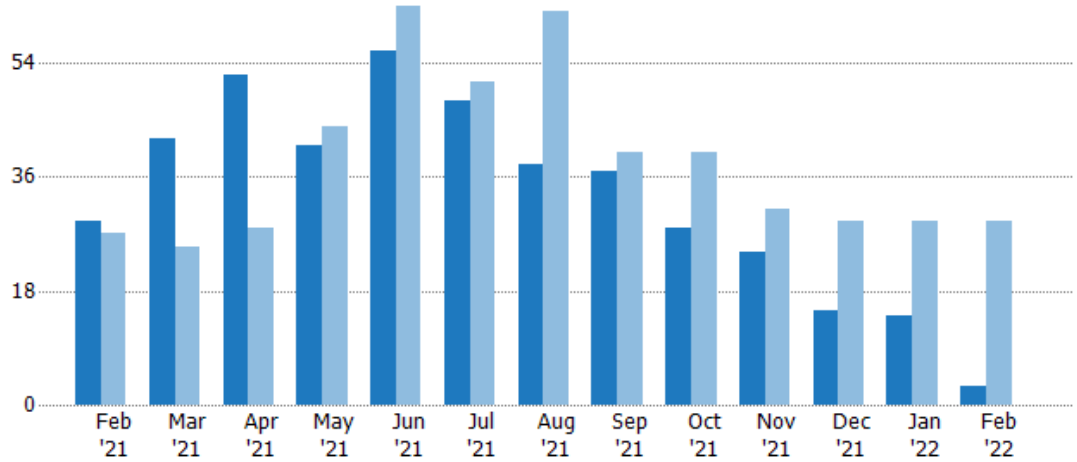
New Pending Sales

The number of residential properties with accepted offers that were added each month.

Filters Used

State: VT
 County: Addison County, Vermont
 Property Type:
 Condo/Townhouse/Apt., Single Family

Month/Year	Count	% Chg.
Feb '22	3	-89.7%
Feb '21	29	7.4%
Feb '20	27	-3.7%



Current Year	29	42	52	41	56	48	38	37	28	24	15	14	3
Prior Year	27	25	28	44	63	51	62	40	40	31	29	29	29
Percent Change from Prior Year	7%	68%	86%	-7%	-11%	-6%	-39%	-8%	-30%	-23%	-48%	-52%	-90%

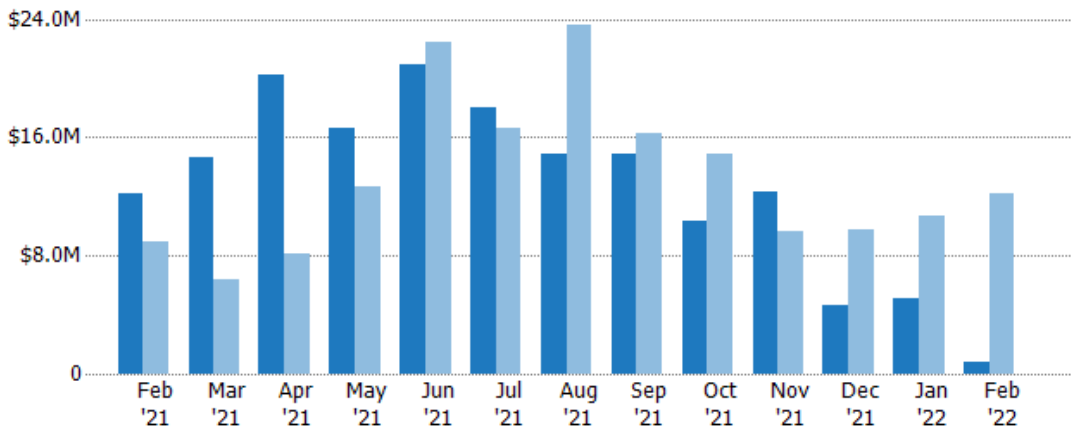
New Pending Sales Volume

The sum of the sales price of residential properties with accepted offers that were added each month.

Filters Used

State: VT
 County: Addison County, Vermont
 Property Type:
 Condo/Townhouse/Apt., Single Family

Month/Year	Volume	% Chg.
Feb '22	\$825K	-93.2%
Feb '21	\$12.2M	36.8%
Feb '20	\$8.92M	-10.8%



Current Year	\$12.2M	\$14.7M	\$20.2M	\$16.6M	\$20.9M	\$18M	\$14.8M	\$14.9M	\$10.3M	\$12.3M	\$4.61M	\$5.14M	\$825K
Prior Year	\$8.92M	\$6.36M	\$8.13M	\$12.7M	\$22.5M	\$16.6M	\$23.6M	\$16.3M	\$14.8M	\$9.65M	\$9.75M	\$10.6M	\$12.2M
Percent Change from Prior Year	37%	131%	149%	31%	-7%	8%	-37%	-9%	-31%	28%	-53%	-52%	-93%

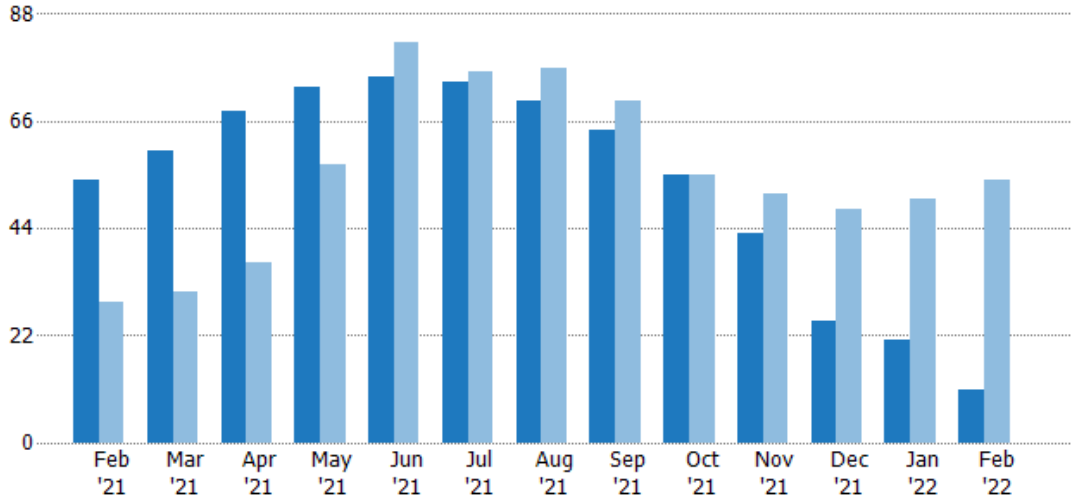
Pending Sales

The number of residential properties with accepted offers that were available at the end each month.

Filters Used

State: VT
 County: Addison County, Vermont
 Property Type:
 Condo/Townhouse/Apt., Single Family

Month/Year	Count	% Chg.
Feb '22	11	-79.6%
Feb '21	54	86.2%
Feb '20	29	17.2%



Current Year	54	60	68	73	75	74	70	64	55	43	25	21	11
Prior Year	29	31	37	57	82	76	77	70	55	51	48	50	54
Percent Change from Prior Year	86%	94%	84%	28%	-9%	-3%	-9%	-9%	0%	-16%	-48%	-58%	-80%

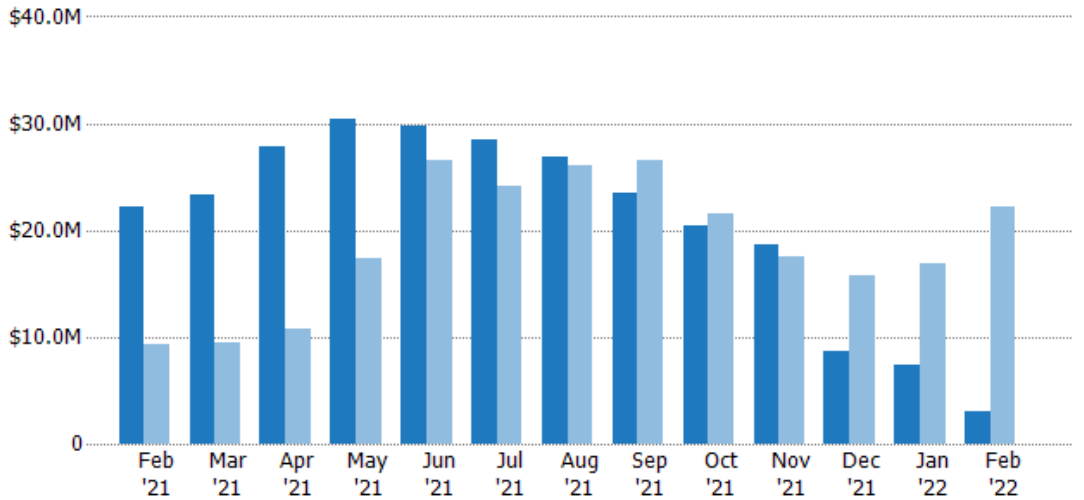
Pending Sales Volume

The sum of the sales price of residential properties with accepted offers that were available at the end of each month.

Filters Used

State: VT
 County: Addison County, Vermont
 Property Type:
 Condo/Townhouse/Apt., Single Family

Month/Year	Volume	% Chg.
Feb '22	\$3.03M	-86.3%
Feb '21	\$22.1M	139%
Feb '20	\$9.25M	5.6%



Current Year	\$22.1M	\$23.4M	\$27.9M	\$30.4M	\$29.8M	\$28.4M	\$26.9M	\$23.5M	\$20.5M	\$18.6M	\$8.67M	\$7.41M	\$3.03M
Prior Year	\$9.25M	\$9.42M	\$10.8M	\$17.3M	\$26.5M	\$24.1M	\$26.1M	\$26.5M	\$21.6M	\$17.5M	\$15.7M	\$16.9M	\$22.1M
Percent Change from Prior Year	139%	148%	158%	76%	12%	18%	3%	-11%	-5%	6%	-45%	-56%	-86%

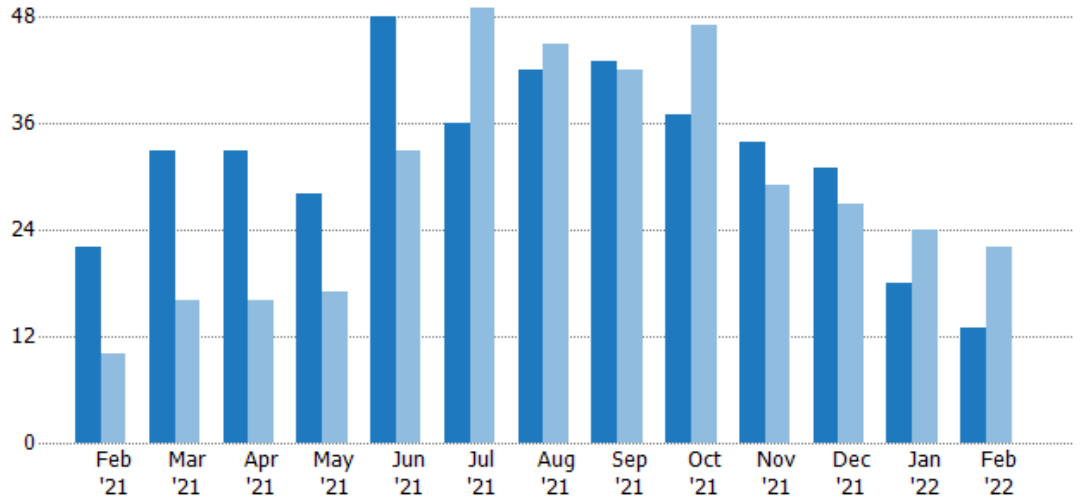
Closed Sales

The total number of residential properties sold each month.

Filters Used

State: VT
 County: Addison County, Vermont
 Property Type:
 Condo/Townhouse/Apt., Single Family

Month/Year	Count	% Chg.
Feb '22	13	-40.9%
Feb '21	22	120%
Feb '20	10	50%



Current Year	22	33	33	28	48	36	42	43	37	34	31	18	13
Prior Year	10	16	16	17	33	49	45	42	47	29	27	24	22
Percent Change from Prior Year	120%	106%	106%	65%	45%	-27%	-7%	2%	-21%	17%	15%	-25%	-41%

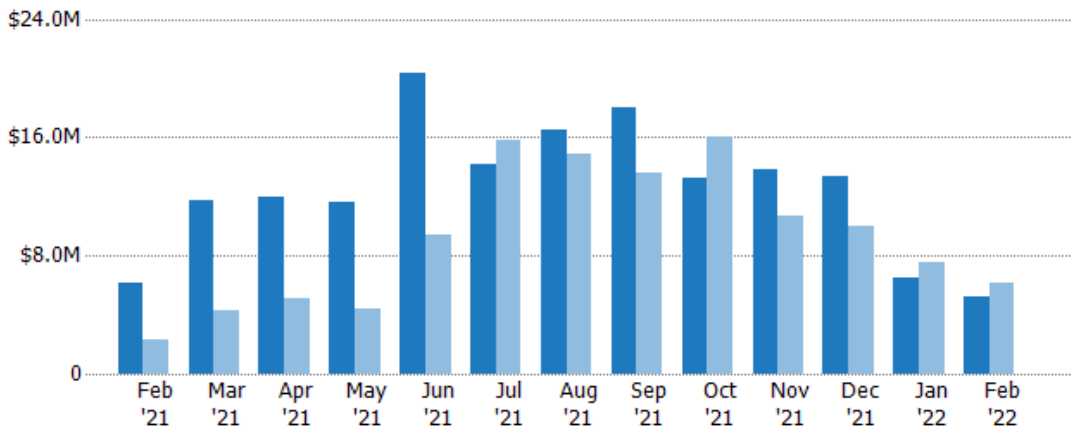
Closed Sales Volume

The sum of the sales price of residential properties sold each month.

Filters Used

State: VT
 County: Addison County, Vermont
 Property Type:
 Condo/Townhouse/Apt., Single Family

Month/Year	Volume	% Chg.
Feb '22	\$5.23M	-15.4%
Feb '21	\$6.19M	168.8%
Feb '20	\$2.3M	37.8%



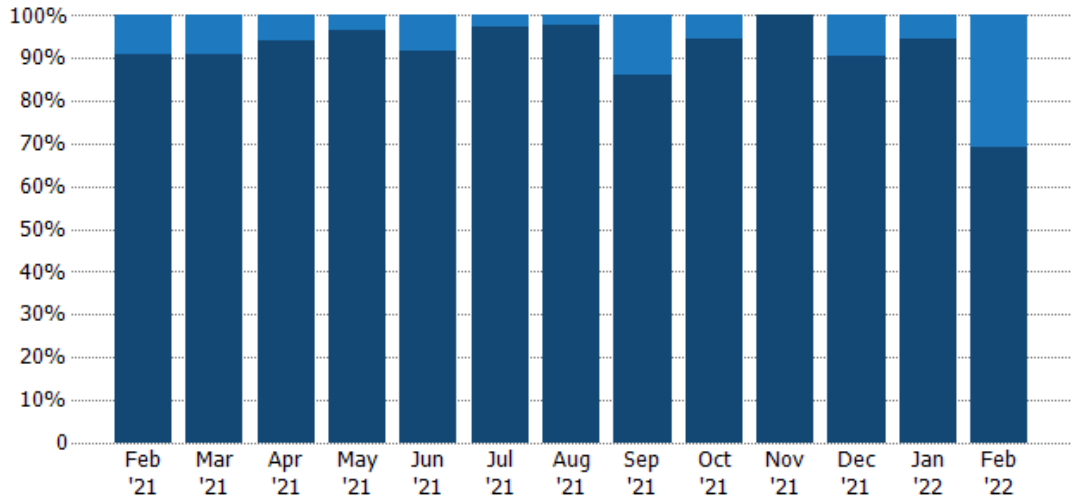
Current Year	\$6.19M	\$11.7M	\$12M	\$11.6M	\$20.4M	\$14.2M	\$16.5M	\$18.1M	\$13.3M	\$13.9M	\$13.3M	\$6.47M	\$5.23M
Prior Year	\$2.3M	\$4.23M	\$5.06M	\$4.38M	\$9.43M	\$15.8M	\$14.9M	\$13.6M	\$16.1M	\$10.7M	\$9.97M	\$7.53M	\$6.19M
Percent Change from Prior Year	169%	177%	137%	165%	116%	-10%	11%	33%	-17%	30%	33%	-14%	-15%

Closed Sales by Property Type

The percentage of residential properties sold each month by property type.

Filters Used

State: VT
 County: Addison County, Vermont
 Property Type: Condo/Townhouse/Apt., Single Family



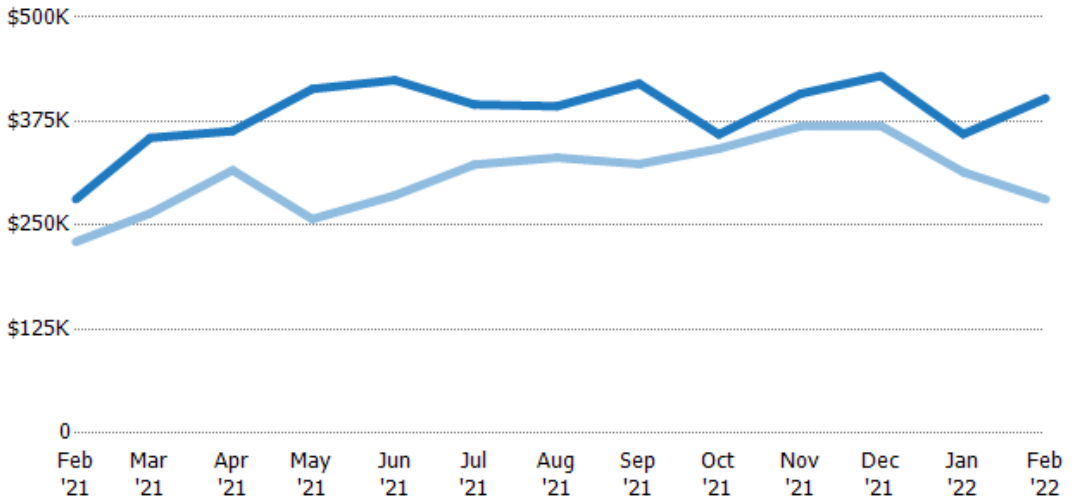
Condo/Townhouse	9%	9%	6%	4%	8%	3%	2%	14%	5%	-	10%	6%	31%
Single Family Residence	91%	91%	94%	96%	92%	97%	98%	86%	95%	100%	90%	94%	69%

Average Sales Price

The average sales price of the residential properties sold each month.

Filters Used

State: VT
 County: Addison County, Vermont
 Property Type: Condo/Townhouse/Apt., Single Family



Current Year	\$281K	\$355K	\$363K	\$414K	\$424K	\$395K	\$393K	\$420K	\$359K	\$408K	\$429K	\$360K	\$402K
Prior Year	\$230K	\$264K	\$316K	\$257K	\$286K	\$323K	\$331K	\$324K	\$342K	\$369K	\$369K	\$314K	\$281K
Percent Change from Prior Year	22%	34%	15%	61%	48%	22%	19%	30%	5%	11%	16%	15%	43%

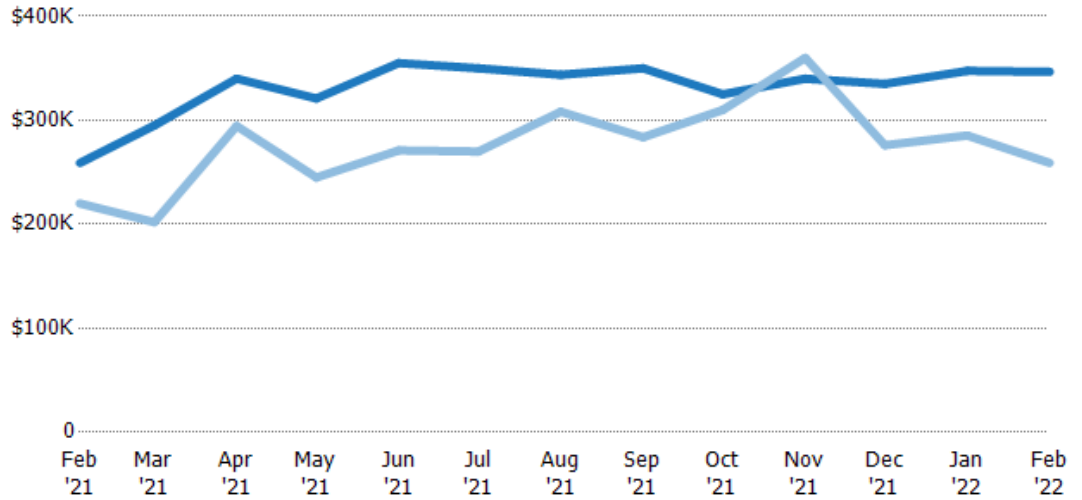
Median Sales Price

The median sales price of the residential properties sold each month.

Filters Used

State: VT
 County: Addison County, Vermont
 Property Type:
 Condo/Townhouse/Apt., Single Family

Month/Year	Price	% Chg.
Feb '22	\$347K	33.8%
Feb '21	\$259K	17.7%
Feb '20	\$220K	-6.8%



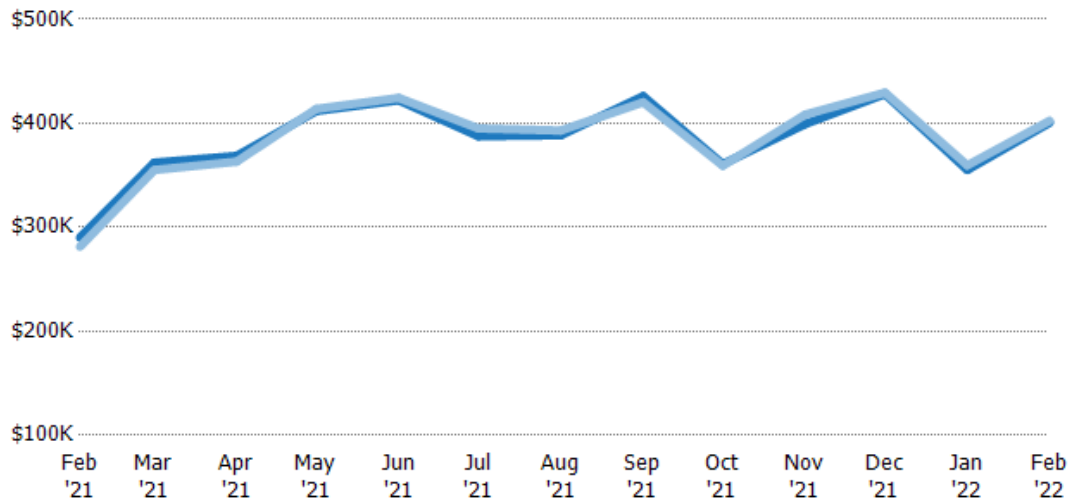
Current Year	\$259K	\$295K	\$340K	\$321K	\$355K	\$350K	\$344K	\$350K	\$325K	\$340K	\$335K	\$348K	\$347K
Prior Year	\$220K	\$202K	\$295K	\$245K	\$271K	\$270K	\$308K	\$284K	\$310K	\$360K	\$276K	\$285K	\$259K
Percent Change from Prior Year	18%	46%	15%	31%	31%	30%	12%	23%	5%	-6%	21%	22%	34%

Average Sales Price vs Average Listing Price

The average sales price as a percentage of the average listing price for properties sold each month.

Filters Used

State: VT
 County: Addison County, Vermont
 Property Type:
 Condo/Townhouse/Apt., Single Family



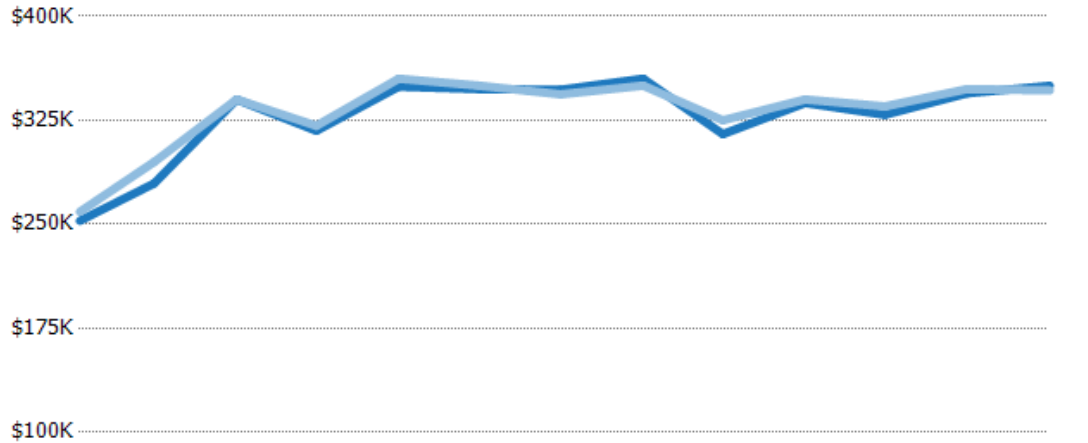
Avg List Price	\$290K	\$362K	\$369K	\$412K	\$422K	\$388K	\$388K	\$426K	\$361K	\$399K	\$428K	\$355K	\$401K
Avg Sales Price	\$281K	\$355K	\$363K	\$414K	\$424K	\$395K	\$393K	\$420K	\$359K	\$408K	\$429K	\$360K	\$402K
Avg Sales Price as a % of Avg List Price	97%	98%	99%	100%	101%	102%	101%	99%	100%	102%	100%	101%	100%

Median Sales Price vs Median Listing Price

The median sales price as a percentage of the median listing price for properties sold each month.

Filters Used

State: VT
 County: Addison County, Vermont
 Property Type:
 Condo/Townhouse/Apt., Single
 Family



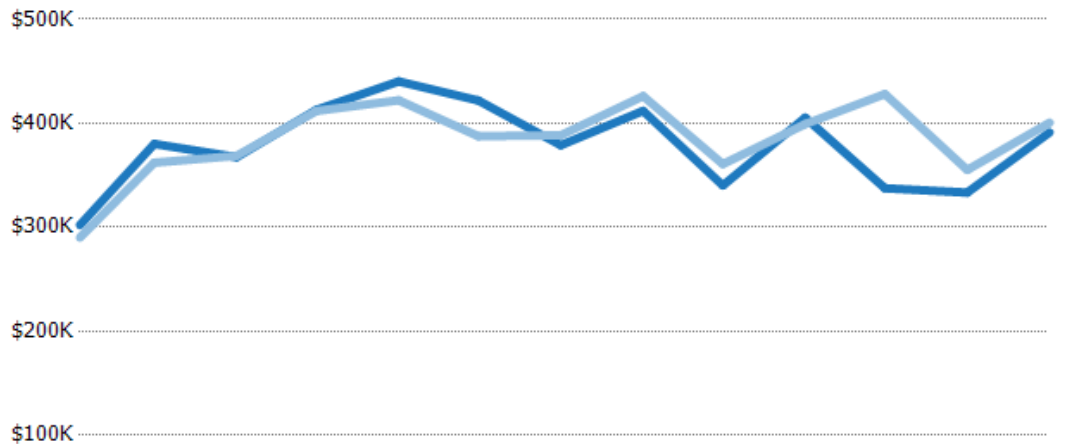
	Feb '21	Mar '21	Apr '21	May '21	Jun '21	Jul '21	Aug '21	Sep '21	Oct '21	Nov '21	Dec '21	Jan '22	Feb '22
Median List Price	\$253K	\$280K	\$340K	\$318K	\$349K	\$348K	\$347K	\$355K	\$315K	\$338K	\$329K	\$345K	\$350K
Median Sales Price	\$259K	\$295K	\$340K	\$321K	\$355K	\$350K	\$344K	\$350K	\$325K	\$340K	\$335K	\$348K	\$347K
Med Sales Price as a % of Med List Price	103%	106%	100%	101%	102%	101%	99%	99%	103%	101%	102%	101%	99%

Average Sales Price vs Average Est Value

The average sales price as a percentage of the average AVM or RVM® valuation estimate for properties sold each month.

Filters Used

State: VT
 County: Addison County, Vermont
 Property Type:
 Condo/Townhouse/Apt., Single
 Family



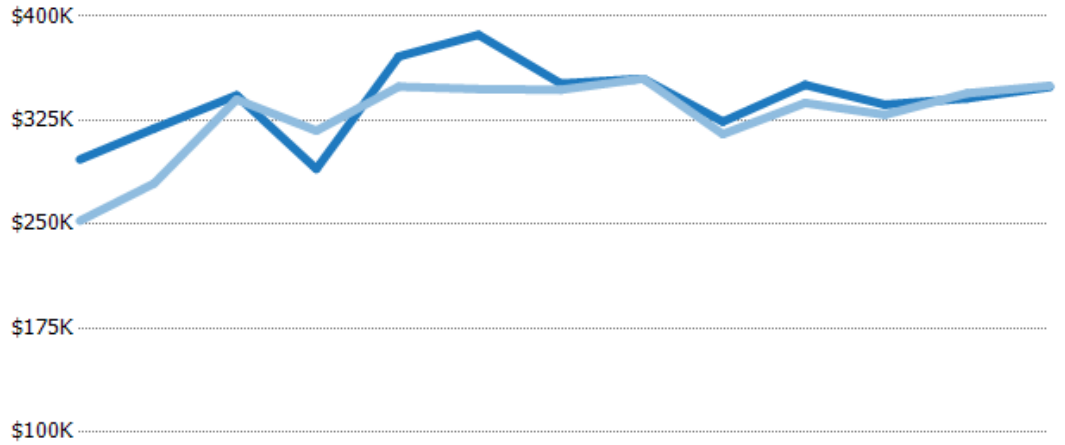
	Feb '21	Mar '21	Apr '21	May '21	Jun '21	Jul '21	Aug '21	Sep '21	Oct '21	Nov '21	Dec '21	Jan '22	Feb '22
Avg Est Value	\$302K	\$380K	\$367K	\$413K	\$440K	\$422K	\$379K	\$412K	\$340K	\$405K	\$338K	\$333K	\$391K
Avg Sales Price	\$290K	\$362K	\$369K	\$412K	\$422K	\$388K	\$388K	\$426K	\$361K	\$399K	\$428K	\$355K	\$401K
Avg Sales Price as a % of Avg Est Value	96%	95%	100%	100%	96%	92%	103%	103%	106%	98%	127%	107%	102%

Median Sales Price vs Median Est Value

The median sales price as a percent of the median AVM or RVM® valuation estimate for properties sold each month.

Filters Used

State: VT
 County: Addison County, Vermont
 Property Type:
 Condo/Townhouse/Apt., Single
 Family



	Feb '21	Mar '21	Apr '21	May '21	Jun '21	Jul '21	Aug '21	Sep '21	Oct '21	Nov '21	Dec '21	Jan '22	Feb '22
Median Est Value	\$297K	\$319K	\$343K	\$290K	\$371K	\$387K	\$352K	\$355K	\$324K	\$351K	\$336K	\$341K	\$349K
Median Sales Price	\$253K	\$280K	\$340K	\$318K	\$349K	\$348K	\$347K	\$355K	\$315K	\$338K	\$329K	\$345K	\$350K
Med Sales Price as a % of Med Est Value	85%	88%	99%	110%	94%	90%	99%	100%	97%	96%	98%	101%	100%