

## Summary of Key Listing and Sales Metrics

A summary of the key metrics selected to be included in the report. MLS sources where licensed.

Key Metrics	Nov 2021	Nov 2020	+ / -	YTD 2021	YTD 2020	+ / -
<b>Listing Activity Charts Metrics</b>						
New Listing Count	2	5	-60%	99	89	+11.2%
New Listing Volume	\$450,000	\$945,800	-52.4%	\$24,270,850	\$17,250,072	+40.7%
Active Listing Count	18	25	-28%	N/A	N/A	
Active Listing Volume	\$4,273,350	\$5,110,400	-16.4%	N/A	N/A	
Average Listing Price	\$237,408	\$204,416	+16.1%	\$261,790	\$207,057	+26.4%
Median Listing Price	\$177,450	\$159,500	+11.3%	\$195,777	\$150,431	+30.1%
Median Days in RPR	89.5	146	-38.7%	72.88	143.45	-49.2%
Months of Inventory	2	3.1	-36%	2.9	5.5	-47.8%
Absorption Rate	50%	32%	+18%	35.02%	18.29%	+16.7%
<b>Sales Activity Charts Metrics</b>						
New Pending Sales Count	-	7	-	101	110	-8.2%
New Pending Sales Volume	-	\$1,896,900	-	\$23,136,750	\$21,570,922	+7.3%
Pending Sales Count	-	13	-	N/A	N/A	
Pending Sales Volume	-	\$3,539,250	-	N/A	N/A	
Closed Sales Count	9	12	-25%	92	83	+10.8%
Closed Sales Volume	\$1,883,500	\$2,268,840	-17%	\$21,351,571	\$15,477,160	+38%
Average Sales Price	\$209,278	\$189,070	+10.7%	\$232,082	\$186,472	+24.5%
Median Sales Price	\$220,000	\$165,500	+32.9%	\$218,477	\$160,443	+36.2%

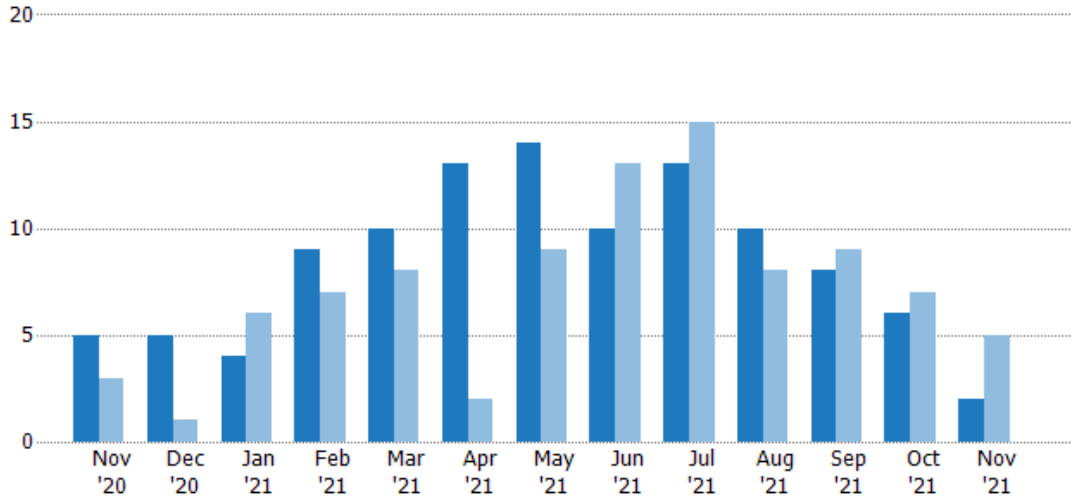
## New Listings

The number of new residential listings that were added each month.

### Filters Used

ZIP: Saint Johnsbury, VT 05819,  
 East Saint Johnsbury, VT 05838,  
 Saint Johnsbury Center, VT 05863  
 Property Type:  
 Condo/Townhouse/Apt., Single  
 Family

Month/Year	Count	% Chg.
Nov '21	2	-60%
Nov '20	5	66.7%
Nov '19	3	0%



Current Year	5	5	4	9	10	13	14	10	13	10	8	6	2
Prior Year	3	1	6	7	8	2	9	13	15	8	9	7	5
Percent Change from Prior Year	67%	400%	-33%	29%	25%	550%	56%	-23%	-13%	25%	-11%	-14%	-60%

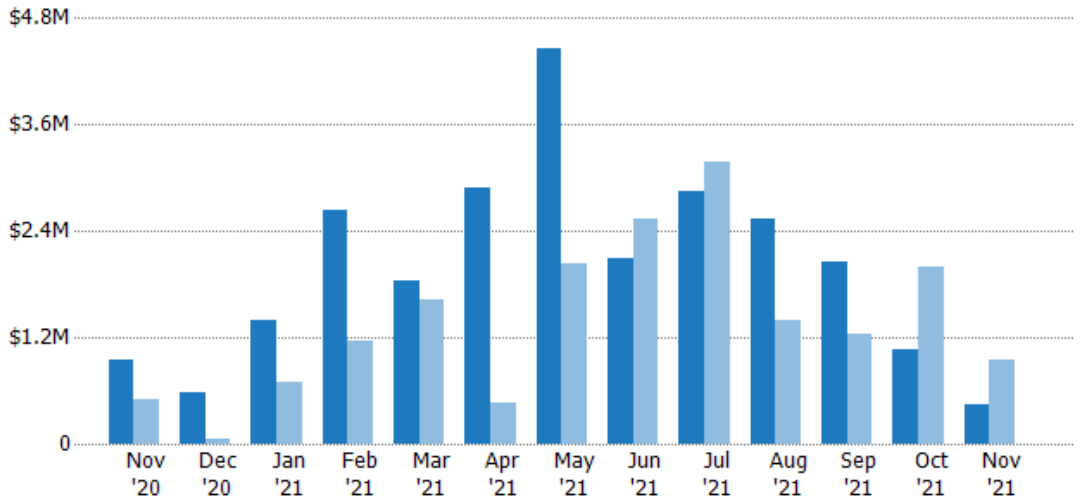
## New Listing Volume

The sum of the listing price of residential listings that were added each month.

### Filters Used

ZIP: Saint Johnsbury, VT 05819,  
 East Saint Johnsbury, VT 05838,  
 Saint Johnsbury Center, VT 05863  
 Property Type:  
 Condo/Townhouse/Apt., Single  
 Family

Month/Year	Volume	% Chg.
Nov '21	\$450K	-52.4%
Nov '20	\$946K	90.7%
Nov '19	\$496K	-37.7%



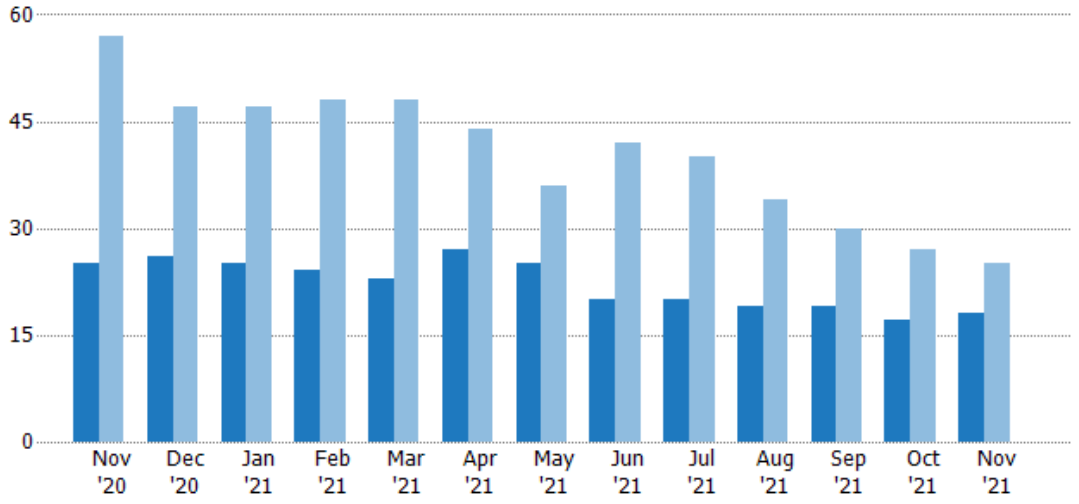
Current Year	\$946K	\$583K	\$1.39M	\$2.64M	\$1.84M	\$2.88M	\$4.47M	\$2.1M	\$2.85M	\$2.54M	\$2.05M	\$1.06M	\$450K
Prior Year	\$496K	\$49.9K	\$699K	\$1.15M	\$1.62M	\$460K	\$2.02M	\$2.54M	\$3.18M	\$1.39M	\$1.24M	\$1.99M	\$946K
Percent Change from Prior Year	91%	1,068%	99%	128%	14%	526%	121%	-17%	-10%	83%	65%	-47%	-52%

## Active Listings

The number of active residential listings at the end of each month.

### Filters Used

ZIP: Saint Johnsbury, VT 05819,  
East Saint Johnsbury, VT 05838,  
Saint Johnsbury Center, VT 05863  
Property Type:  
Condo/Townhouse/Apt., Single  
Family



Month/Year	Count	% Chg.
Nov '21	18	-28%
Nov '20	25	-56.1%
Nov '19	57	-5.3%

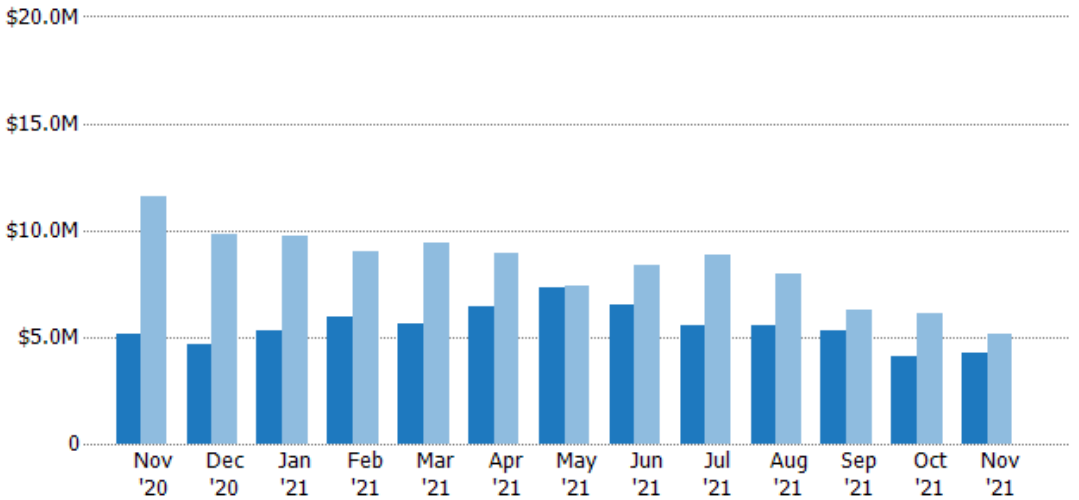
	Nov '20	Dec '20	Jan '21	Feb '21	Mar '21	Apr '21	May '21	Jun '21	Jul '21	Aug '21	Sep '21	Oct '21	Nov '21
Current Year	25	26	25	24	23	27	25	20	20	19	19	17	18
Prior Year	57	47	47	48	48	44	36	42	40	34	30	27	25
Percent Change from Prior Year	-56%	-45%	-47%	-50%	-52%	-39%	-31%	-52%	-50%	-44%	-37%	-37%	-28%

## Active Listing Volume

The sum of the listing price of active residential listings at the end of each month.

### Filters Used

ZIP: Saint Johnsbury, VT 05819,  
East Saint Johnsbury, VT 05838,  
Saint Johnsbury Center, VT 05863  
Property Type:  
Condo/Townhouse/Apt., Single  
Family



Month/Year	Volume	% Chg.
Nov '21	\$4.27M	-16.4%
Nov '20	\$5.11M	-55.8%
Nov '19	\$11.6M	-3.2%

	Nov '20	Dec '20	Jan '21	Feb '21	Mar '21	Apr '21	May '21	Jun '21	Jul '21	Aug '21	Sep '21	Oct '21	Nov '21
Current Year	\$5.11M	\$4.67M	\$5.34M	\$5.98M	\$5.59M	\$6.44M	\$7.32M	\$6.54M	\$5.56M	\$5.54M	\$5.32M	\$4.12M	\$4.27M
Prior Year	\$11.6M	\$9.84M	\$9.71M	\$9.02M	\$9.45M	\$8.96M	\$7.38M	\$8.36M	\$8.83M	\$7.98M	\$6.28M	\$6.09M	\$5.11M
Percent Change from Prior Year	-56%	-53%	-45%	-34%	-41%	-28%	-1%	-22%	-37%	-31%	-15%	-32%	-16%

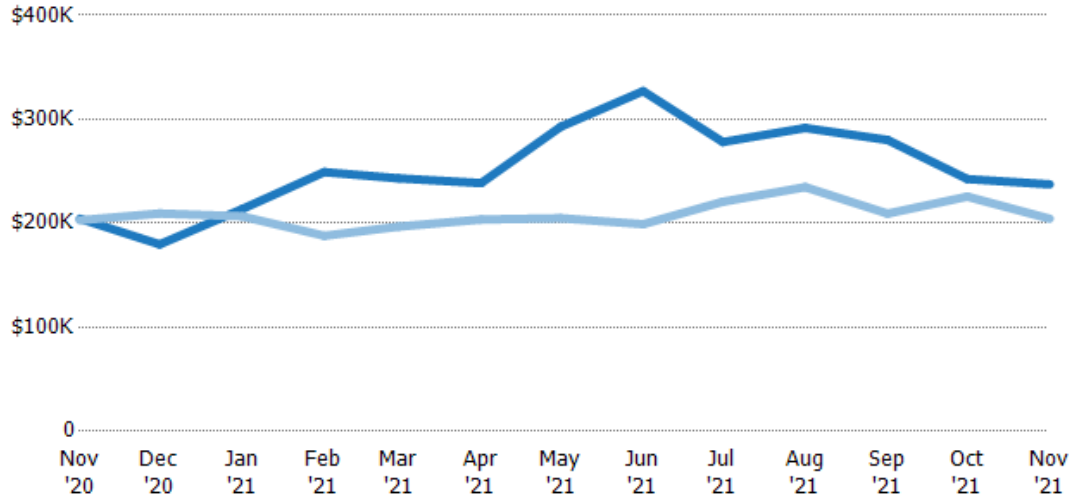
## Average Listing Price

The average listing price of active residential listings at the end of each month.

### Filters Used

ZIP: Saint Johnsbury, VT 05819,  
East Saint Johnsbury, VT 05838,  
Saint Johnsbury Center, VT 05863  
Property Type:  
Condo/Townhouse/Apt., Single  
Family

Month/ Year	Price	% Chg.
Nov '21	\$237K	16.1%
Nov '20	\$204K	0.7%
Nov '19	\$203K	2.2%



Current Year	\$204K	\$180K	\$214K	\$249K	\$243K	\$239K	\$293K	\$327K	\$278K	\$292K	\$280K	\$243K	\$237K
Prior Year	\$203K	\$209K	\$207K	\$188K	\$197K	\$204K	\$205K	\$199K	\$221K	\$235K	\$209K	\$226K	\$204K
Percent Change from Prior Year	1%	-14%	3%	33%	24%	17%	43%	64%	26%	24%	34%	7%	16%

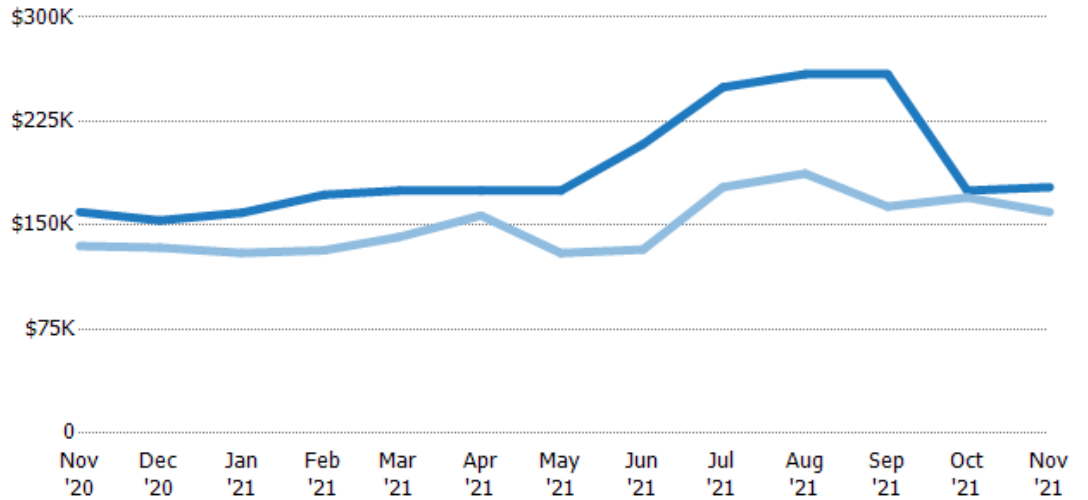
## Median Listing Price

The median listing price of active residential listings at the end of each month.

### Filters Used

ZIP: Saint Johnsbury, VT 05819,  
East Saint Johnsbury, VT 05838,  
Saint Johnsbury Center, VT 05863  
Property Type:  
Condo/Townhouse/Apt., Single  
Family

Month/ Year	Price	% Chg.
Nov '21	\$177K	11.3%
Nov '20	\$160K	18.1%
Nov '19	\$135K	25.6%



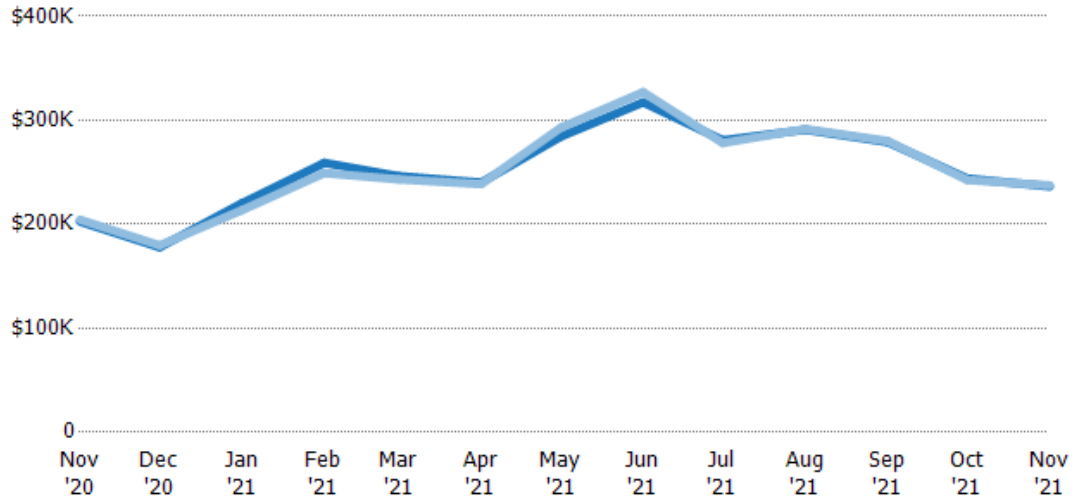
Current Year	\$160K	\$154K	\$159K	\$172K	\$175K	\$175K	\$175K	\$209K	\$250K	\$259K	\$259K	\$175K	\$177K
Prior Year	\$135K	\$134K	\$130K	\$132K	\$141K	\$157K	\$130K	\$133K	\$177K	\$187K	\$164K	\$170K	\$160K
Percent Change from Prior Year	18%	15%	22%	30%	24%	11%	35%	57%	41%	38%	58%	3%	11%

## Average Listing Price vs Average Est Value

The average listing price as a percentage of the average AVM or RVM® valuation estimate for active listings each month.

### Filters Used

ZIP: Saint Johnsbury, VT 05819,  
East Saint Johnsbury, VT 05838,  
Saint Johnsbury Center, VT 05863  
Property Type:  
Condo/Townhouse/Apt., Single  
Family



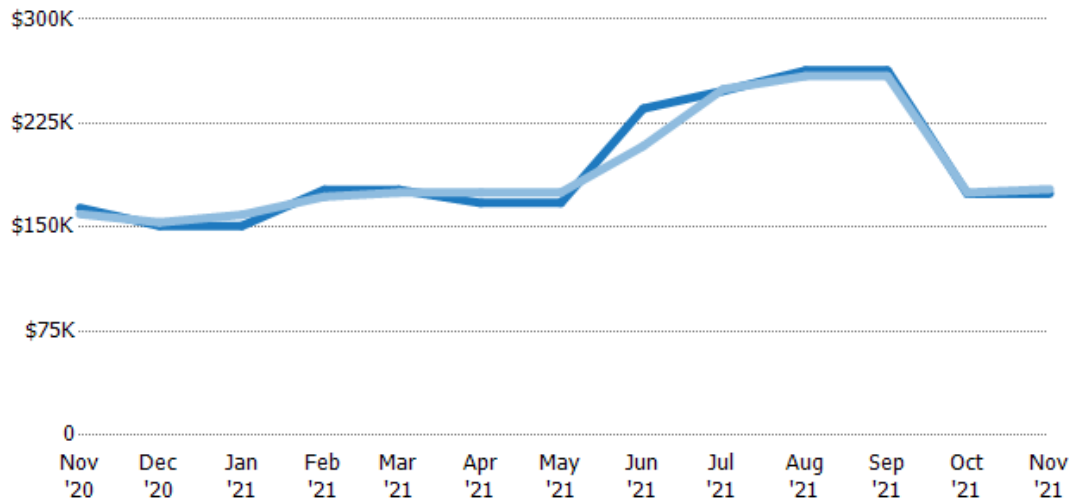
	Nov '20	Dec '20	Jan '21	Feb '21	Mar '21	Apr '21	May '21	Jun '21	Jul '21	Aug '21	Sep '21	Oct '21	Nov '21
Avg Est Value	\$203K	\$178K	\$220K	\$259K	\$246K	\$240K	\$284K	\$317K	\$281K	\$291K	\$279K	\$244K	\$236K
Avg Listing Price	\$204K	\$180K	\$214K	\$249K	\$243K	\$239K	\$293K	\$327K	\$278K	\$292K	\$280K	\$243K	\$237K
Avg Listing Price as a % of Avg Est Value	101%	101%	97%	96%	99%	99%	103%	103%	99%	100%	100%	99%	100%

## Median Listing Price vs Median Est Value

The median listing price as a percentage of the median AVM or RVM® valuation estimate for active listings each month.

### Filters Used

ZIP: Saint Johnsbury, VT 05819,  
East Saint Johnsbury, VT 05838,  
Saint Johnsbury Center, VT 05863  
Property Type:  
Condo/Townhouse/Apt., Single  
Family



	Nov '20	Dec '20	Jan '21	Feb '21	Mar '21	Apr '21	May '21	Jun '21	Jul '21	Aug '21	Sep '21	Oct '21	Nov '21
Median Est Value	\$164K	\$151K	\$151K	\$177K	\$177K	\$168K	\$168K	\$236K	\$248K	\$263K	\$263K	\$174K	\$174K
Median Listing Price	\$160K	\$154K	\$159K	\$172K	\$175K	\$175K	\$175K	\$209K	\$250K	\$259K	\$259K	\$175K	\$177K
Med Listing Price as a % of Med Est Value	97%	102%	105%	97%	99%	104%	104%	89%	100%	98%	98%	101%	102%

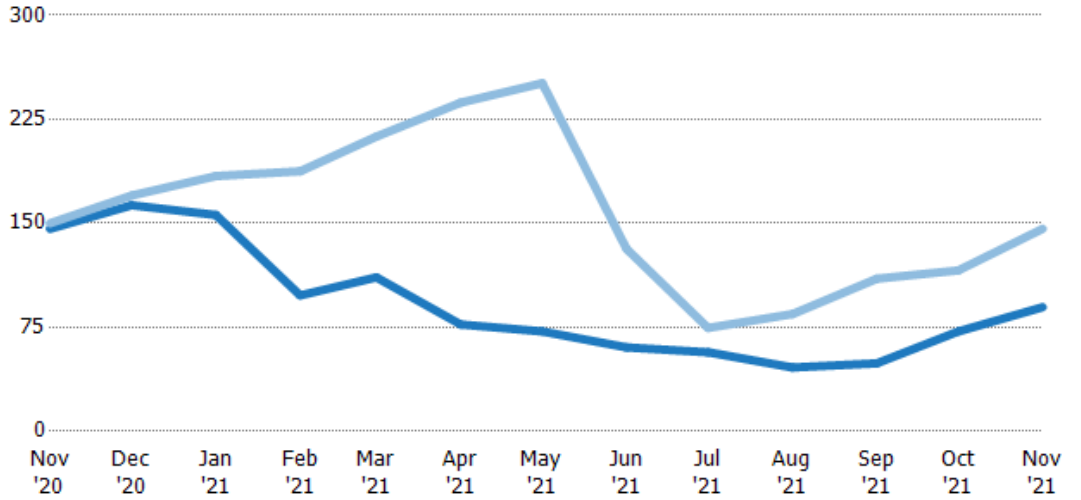
## Median Days in RPR

The median number of days between when residential properties are first displayed as active listings in RPR and when accepted offers have been noted in RPR.

### Filters Used

ZIP: Saint Johnsbury, VT 05819,  
East Saint Johnsbury, VT 05838,  
Saint Johnsbury Center, VT 05863  
Property Type:  
Condo/Townhouse/Apt., Single  
Family

Month/Year	Days	% Chg.
Nov '21	89.5	-38.7%
Nov '20	146	-2.7%
Nov '19	150	-13%



	Nov '20	Dec '20	Jan '21	Feb '21	Mar '21	Apr '21	May '21	Jun '21	Jul '21	Aug '21	Sep '21	Oct '21	Nov '21
Current Year	146	163	156	98	111	77	72	60.5	57	46	49	72	89.5
Prior Year	150	170	184	188	213	237	251	132	74.5	84.5	110	116	146
Percent Change from Prior Year	-3%	-4%	-15%	-48%	-48%	-68%	-71%	-54%	-23%	-46%	-55%	-38%	-39%

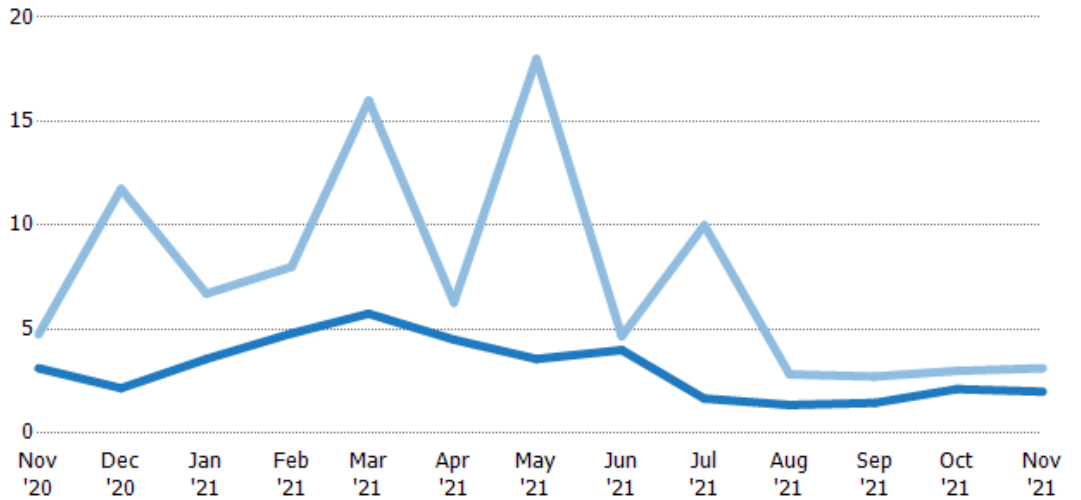
## Months of Inventory

The number of months it would take to exhaust active listings at the current sales rate.

### Filters Used

ZIP: Saint Johnsbury, VT 05819,  
East Saint Johnsbury, VT 05838,  
Saint Johnsbury Center, VT 05863  
Property Type:  
Condo/Townhouse/Apt., Single  
Family

Month/Year	Months	% Chg.
Nov '21	2	-36%
Nov '20	3.13	-34.2%
Nov '19	4.75	42.1%



	Nov '20	Dec '20	Jan '21	Feb '21	Mar '21	Apr '21	May '21	Jun '21	Jul '21	Aug '21	Sep '21	Oct '21	Nov '21
Current Year	3.13	2.17	3.57	4.8	5.75	4.5	3.57	4	1.67	1.36	1.46	2.13	2
Prior Year	4.75	11.8	6.71	8	16	6.29	18	4.67	10	2.83	2.73	3	3.13
Percent Change from Prior Year	-34%	-82%	-47%	-40%	-64%	-28%	-80%	-14%	-83%	-52%	-46%	-29%	-36%

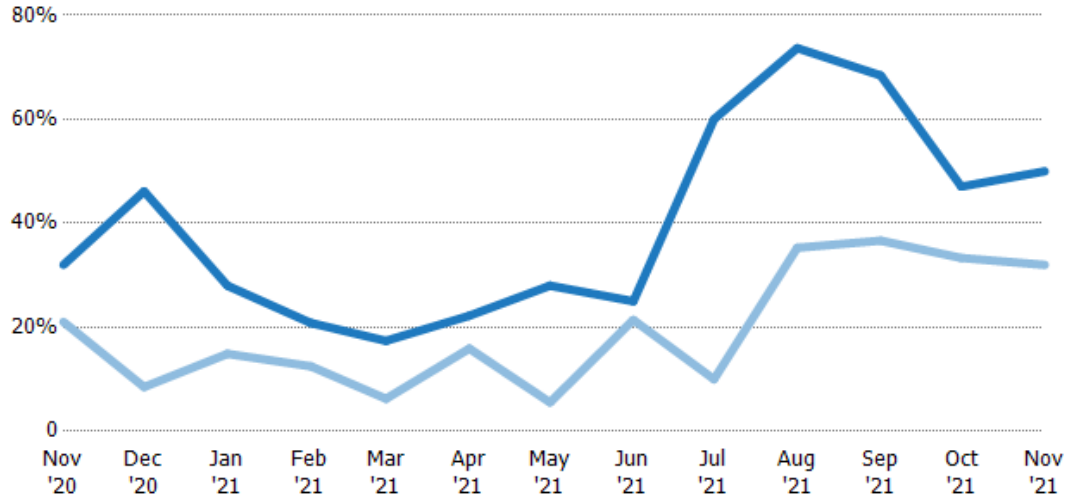
## Absorption Rate

The percentage of inventory sold per month.

### Filters Used

ZIP: Saint Johnsbury, VT 05819,  
East Saint Johnsbury, VT 05838,  
Saint Johnsbury Center, VT 05863  
Property Type:  
Condo/Townhouse/Apt., Single  
Family

Month/ Year	Rate	Chg.
Nov '21	50%	-18%
Nov '20	32%	-11%
Nov '19	21%	-29.6%



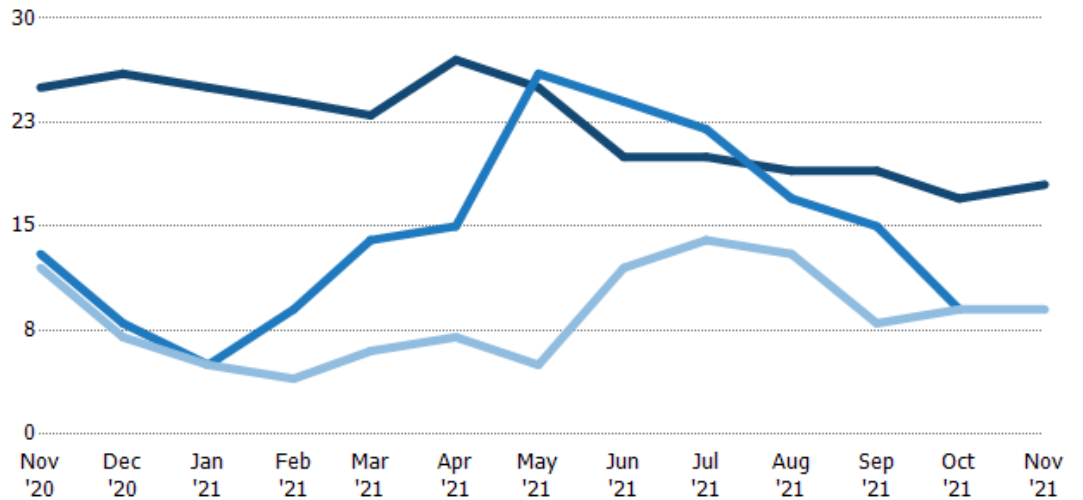
	Nov '20	Dec '20	Jan '21	Feb '21	Mar '21	Apr '21	May '21	Jun '21	Jul '21	Aug '21	Sep '21	Oct '21	Nov '21
Current Year	32%	46%	28%	21%	17%	22%	28%	25%	60%	74%	68%	47%	50%
Prior Year	21%	9%	15%	13%	6%	16%	6%	21%	10%	35%	37%	33%	32%
Change from Prior Year	-11%	-38%	-13%	-8%	-11%	-6%	-22%	-4%	-50%	-38%	-32%	-14%	-18%

## Active/Pending/Sold Units

The number of residential properties that were Active, Pending and Sold each month.

### Filters Used

ZIP: Saint Johnsbury, VT 05819,  
East Saint Johnsbury, VT 05838,  
Saint Johnsbury Center, VT 05863  
Property Type:  
Condo/Townhouse/Apt., Single  
Family



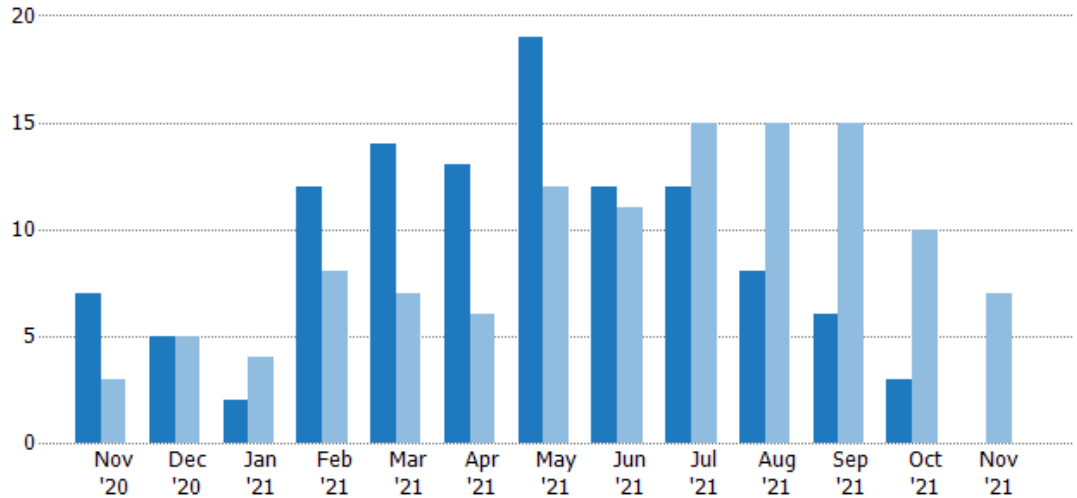
	Nov '20	Dec '20	Jan '21	Feb '21	Mar '21	Apr '21	May '21	Jun '21	Jul '21	Aug '21	Sep '21	Oct '21	Nov '21
Active	25	26	25	24	23	27	25	20	20	19	19	17	18
Pending	13	8	5	9	14	15	26	24	22	17	15	9	-
Sold	12	7	5	4	6	7	5	12	14	13	8	9	9

## New Pending Sales

The number of residential properties with accepted offers that were added each month.

### Filters Used

ZIP: Saint Johnsbury, VT 05819,  
 East Saint Johnsbury, VT 05838,  
 Saint Johnsbury Center, VT 05863  
 Property Type:  
 Condo/Townhouse/Apt., Single  
 Family



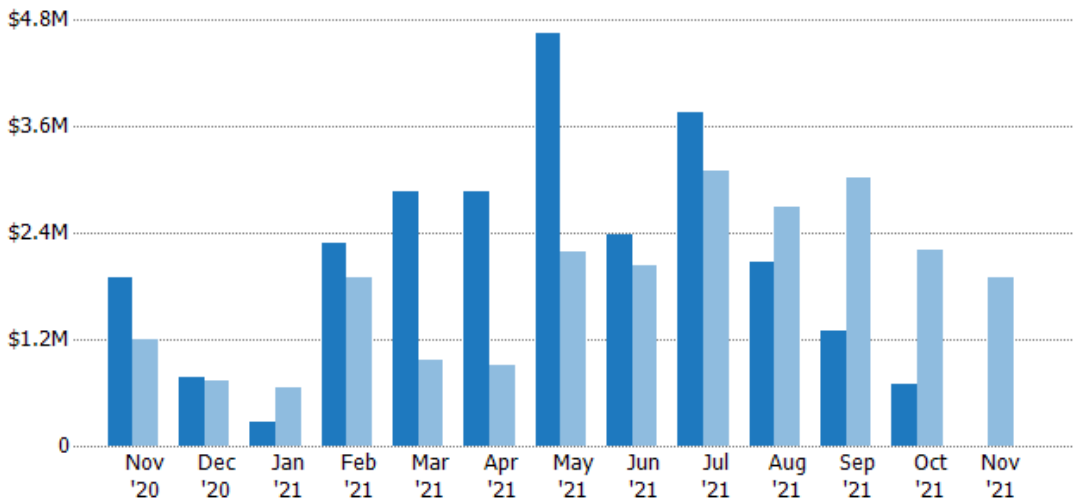
Current Year	7	5	2	12	14	13	19	12	12	8	6	3	-
Prior Year	3	5	4	8	7	6	12	11	15	15	15	10	7
Percent Change from Prior Year	133%	0%	-50%	50%	100%	117%	58%	9%	-20%	-47%	-60%	-70%	-100%

## New Pending Sales Volume

The sum of the sales price of residential properties with accepted offers that were added each month.

### Filters Used

ZIP: Saint Johnsbury, VT 05819,  
 East Saint Johnsbury, VT 05838,  
 Saint Johnsbury Center, VT 05863  
 Property Type:  
 Condo/Townhouse/Apt., Single  
 Family



Current Year	\$1.9M	\$781K	\$269K	\$2.28M	\$2.87M	\$2.87M	\$4.66M	\$2.38M	\$3.75M	\$2.07M	\$1.3M	\$693K	-
Prior Year	\$1.19M	\$727K	\$655K	\$1.89M	\$963K	\$905K	\$2.2M	\$2.03M	\$3.1M	\$2.7M	\$3.03M	\$2.2M	\$1.9M
Percent Change from Prior Year	59%	7%	-59%	21%	198%	217%	112%	17%	21%	-23%	-57%	-69%	-100%

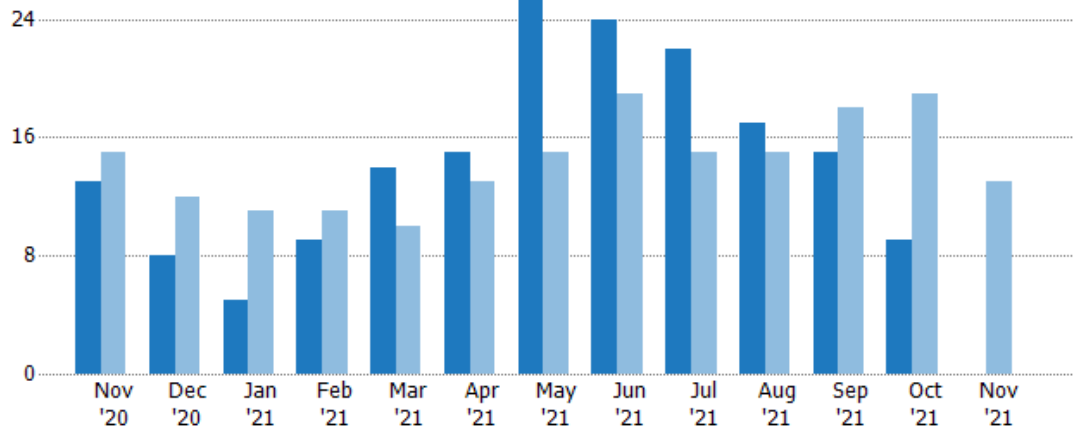


## Pending Sales

The number of residential properties with accepted offers that were available at the end each month.

### Filters Used

ZIP: Saint Johnsbury, VT 05819,  
East Saint Johnsbury, VT 05838,  
Saint Johnsbury Center, VT 05863  
Property Type:  
Condo/Townhouse/Apt., Single  
Family



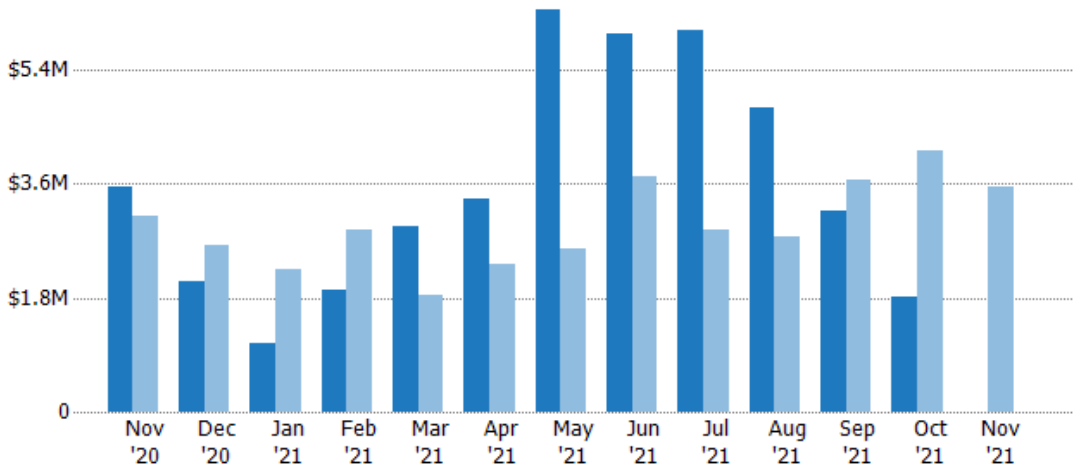
Current Year	13	8	5	9	14	15	26	24	22	17	15	9	-
Prior Year	15	12	11	11	10	13	15	19	15	15	18	19	13
Percent Change from Prior Year	-13%	-33%	-55%	-18%	40%	15%	73%	26%	47%	13%	-17%	-53%	-100%

## Pending Sales Volume

The sum of the sales price of residential properties with accepted offers that were available at the end of each month.

### Filters Used

ZIP: Saint Johnsbury, VT 05819,  
East Saint Johnsbury, VT 05838,  
Saint Johnsbury Center, VT 05863  
Property Type:  
Condo/Townhouse/Apt., Single  
Family



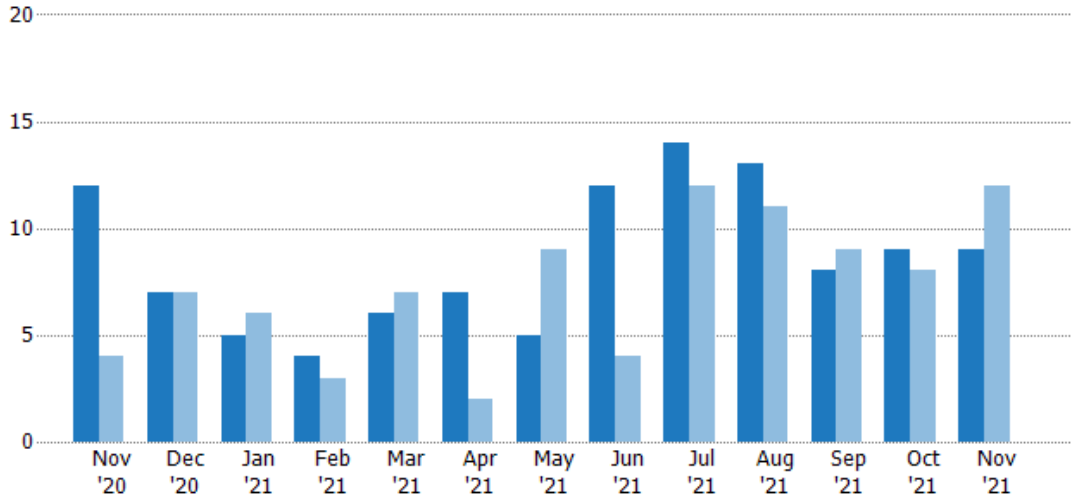
Current Year	\$3.54M	\$2.06M	\$1.07M	\$1.92M	\$2.94M	\$3.37M	\$6.36M	\$5.96M	\$6.01M	\$4.8M	\$3.18M	\$1.83M	-
Prior Year	\$3.1M	\$2.63M	\$2.24M	\$2.87M	\$1.84M	\$2.34M	\$2.57M	\$3.71M	\$2.88M	\$2.77M	\$3.65M	\$4.13M	\$3.54M
Percent Change from Prior Year	14%	-22%	-52%	-33%	60%	44%	147%	60%	109%	73%	-13%	-56%	-100%

## Closed Sales

The total number of residential properties sold each month.

### Filters Used

ZIP: Saint Johnsbury, VT 05819,  
East Saint Johnsbury, VT 05838,  
Saint Johnsbury Center, VT 05863  
Property Type:  
Condo/Townhouse/Apt., Single  
Family



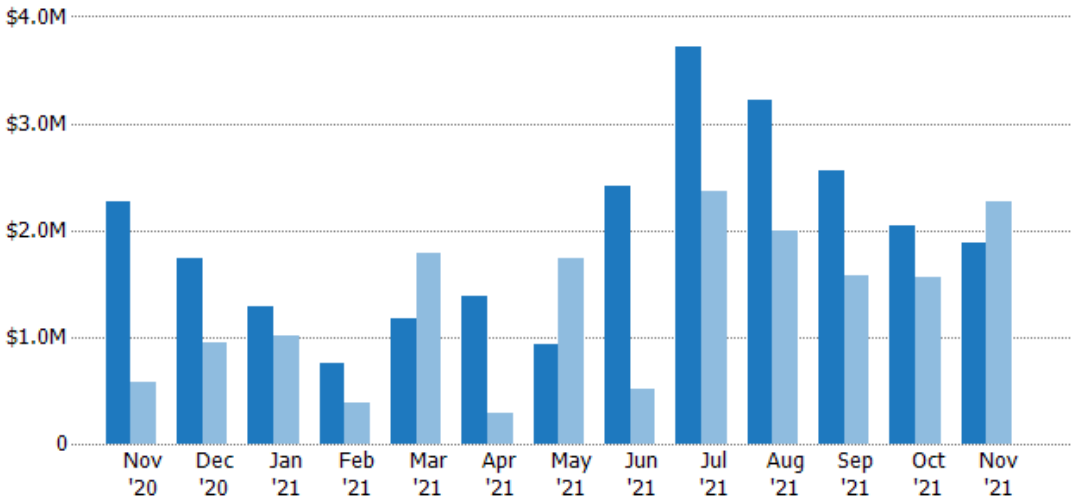
	Nov '20	Dec '20	Jan '21	Feb '21	Mar '21	Apr '21	May '21	Jun '21	Jul '21	Aug '21	Sep '21	Oct '21	Nov '21
Current Year	12	7	5	4	6	7	5	12	14	13	8	9	9
Prior Year	4	7	6	3	7	2	9	4	12	11	9	8	12
Percent Change from Prior Year	200%	0%	-17%	33%	-14%	250%	-44%	200%	17%	18%	-11%	13%	-25%

## Closed Sales Volume

The sum of the sales price of residential properties sold each month.

### Filters Used

ZIP: Saint Johnsbury, VT 05819,  
East Saint Johnsbury, VT 05838,  
Saint Johnsbury Center, VT 05863  
Property Type:  
Condo/Townhouse/Apt., Single  
Family



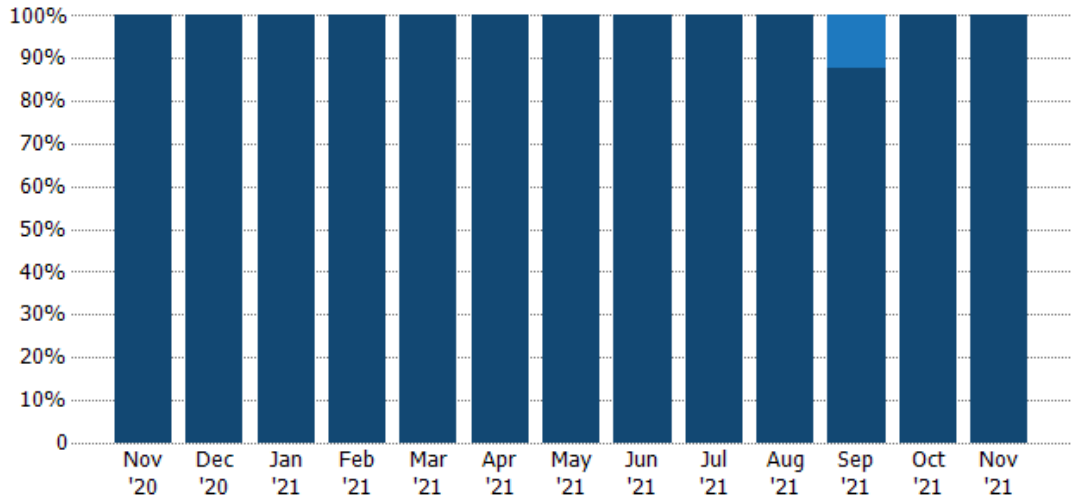
	Nov '20	Dec '20	Jan '21	Feb '21	Mar '21	Apr '21	May '21	Jun '21	Jul '21	Aug '21	Sep '21	Oct '21	Nov '21
Current Year	\$2.27M	\$1.73M	\$1.29M	\$757K	\$1.17M	\$1.38M	\$934K	\$2.41M	\$3.71M	\$3.23M	\$2.55M	\$2.04M	\$1.88M
Prior Year	\$576K	\$946K	\$1.01M	\$391K	\$1.78M	\$286K	\$1.74M	\$512K	\$2.37M	\$1.99M	\$1.58M	\$1.56M	\$2.27M
Percent Change from Prior Year	294%	83%	28%	94%	-34%	384%	-46%	371%	57%	62%	62%	30%	-17%

## Closed Sales by Property Type

The percentage of residential properties sold each month by property type.

### Filters Used

ZIP: Saint Johnsbury, VT 05819,  
East Saint Johnsbury, VT 05838,  
Saint Johnsbury Center, VT 05863  
Property Type:  
Condo/Townhouse/Apt., Single  
Family



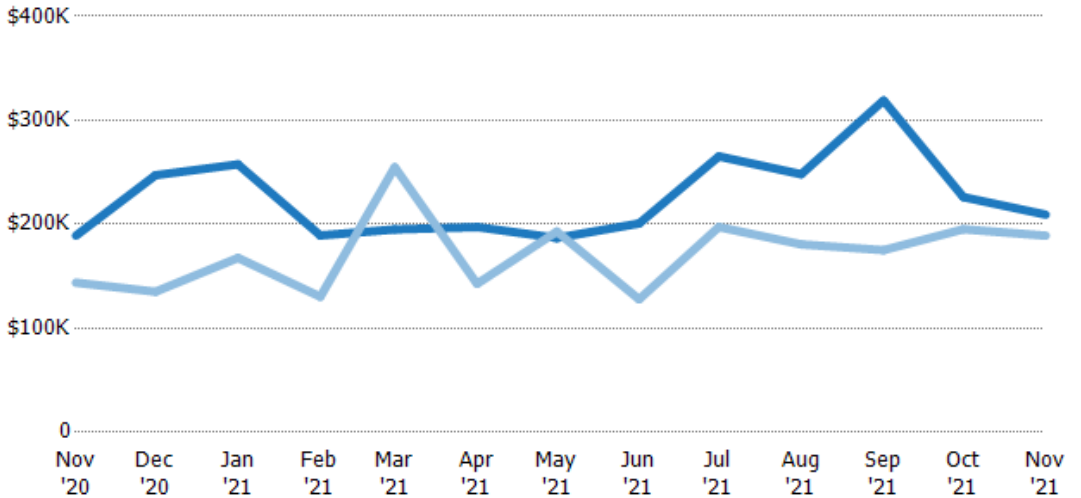
Condo/Townhouse	-	-	-	-	-	-	-	-	-	-	13%	-	-
Single Family Residence	100%	100%	100%	100%	100%	100%	100%	100%	100%	100%	88%	100%	100%

## Average Sales Price

The average sales price of the residential properties sold each month.

### Filters Used

ZIP: Saint Johnsbury, VT 05819,  
East Saint Johnsbury, VT 05838,  
Saint Johnsbury Center, VT 05863  
Property Type:  
Condo/Townhouse/Apt., Single  
Family



Current Year	\$189K	\$247K	\$258K	\$189K	\$195K	\$197K	\$187K	\$201K	\$265K	\$248K	\$319K	\$226K	\$209K
Prior Year	\$144K	\$135K	\$168K	\$130K	\$255K	\$143K	\$193K	\$128K	\$197K	\$181K	\$175K	\$195K	\$189K
Percent Change from Prior Year	31%	83%	54%	45%	-23%	38%	-3%	57%	34%	37%	82%	16%	11%

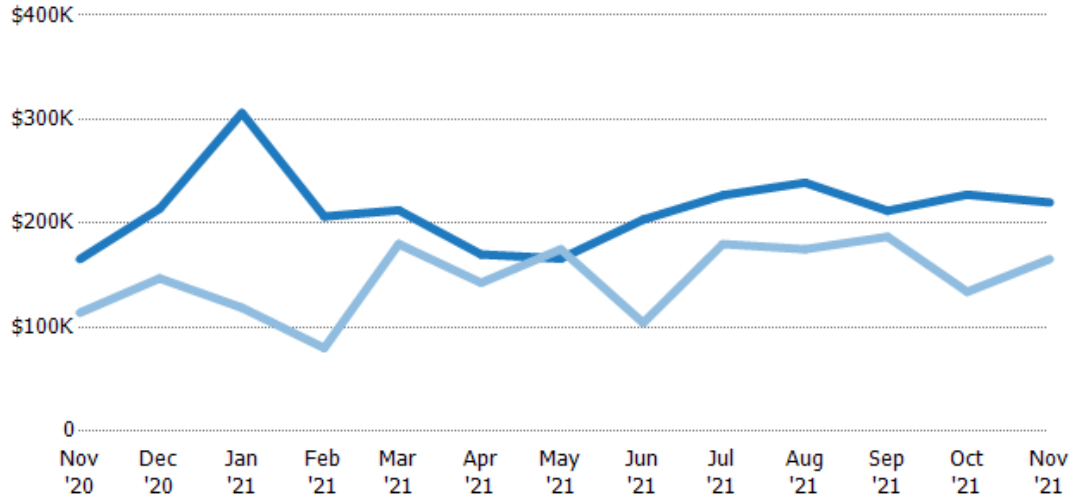
## Median Sales Price

The median sales price of the residential properties sold each month.

### Filters Used

ZIP: Saint Johnsbury, VT 05819,  
East Saint Johnsbury, VT 05838,  
Saint Johnsbury Center, VT 05863  
Property Type:  
Condo/Townhouse/Apt., Single  
Family

Month/ Year	Price	% Chg.
Nov '21	\$220K	32.9%
Nov '20	\$166K	45.2%
Nov '19	\$114K	29.4%



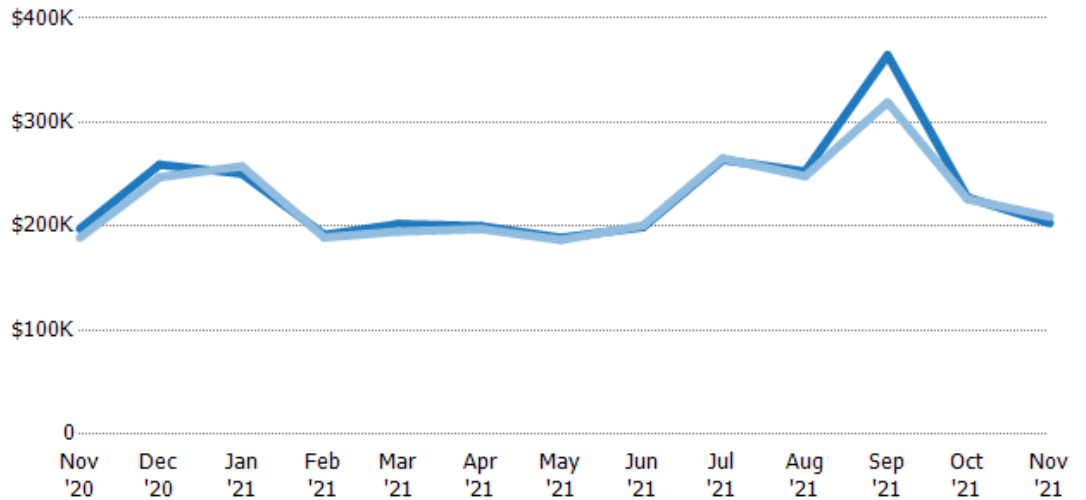
Current Year	\$166K	\$214K	\$306K	\$207K	\$213K	\$170K	\$166K	\$204K	\$227K	\$239K	\$212K	\$228K	\$220K
Prior Year	\$114K	\$147K	\$119K	\$80K	\$180K	\$143K	\$175K	\$104K	\$180K	\$175K	\$187K	\$134K	\$166K
Percent Change from Prior Year	45%	46%	158%	158%	18%	19%	-5%	95%	26%	37%	13%	70%	33%

## Average Sales Price vs Average Listing Price

The average sales price as a percentage of the average listing price for properties sold each month.

### Filters Used

ZIP: Saint Johnsbury, VT 05819,  
East Saint Johnsbury, VT 05838,  
Saint Johnsbury Center, VT 05863  
Property Type:  
Condo/Townhouse/Apt., Single  
Family



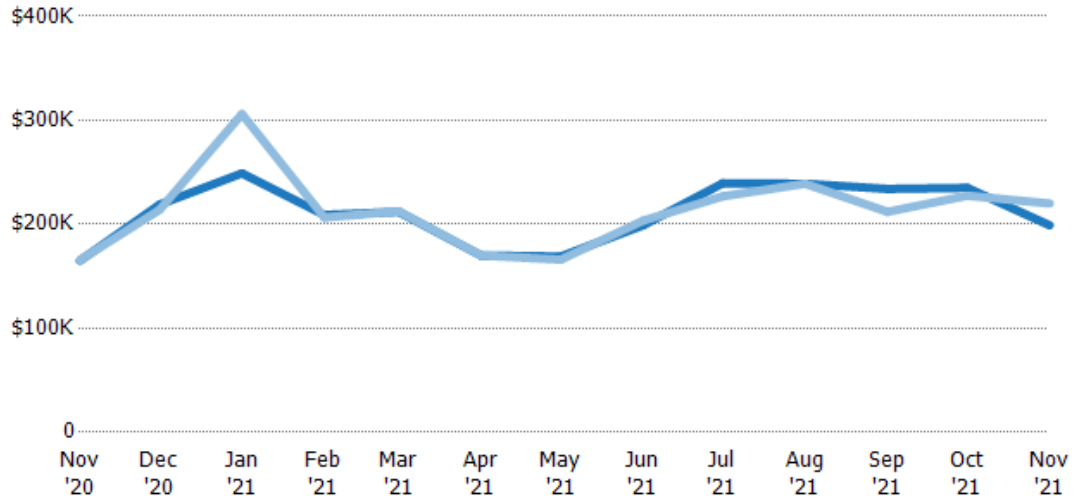
Avg List Price	\$197K	\$259K	\$251K	\$192K	\$202K	\$200K	\$189K	\$199K	\$264K	\$253K	\$365K	\$228K	\$203K
Avg Sales Price	\$189K	\$247K	\$258K	\$189K	\$195K	\$197K	\$187K	\$201K	\$265K	\$248K	\$319K	\$226K	\$209K
Avg Sales Price as a % of Avg List Price	96%	95%	103%	99%	96%	99%	99%	101%	101%	98%	88%	99%	103%

## Median Sales Price vs Median Listing Price

The median sales price as a percentage of the median listing price for properties sold each month.

### Filters Used

ZIP: Saint Johnsbury, VT 05819,  
East Saint Johnsbury, VT 05838,  
Saint Johnsbury Center, VT 05863  
Property Type:  
Condo/Townhouse/Apt., Single  
Family



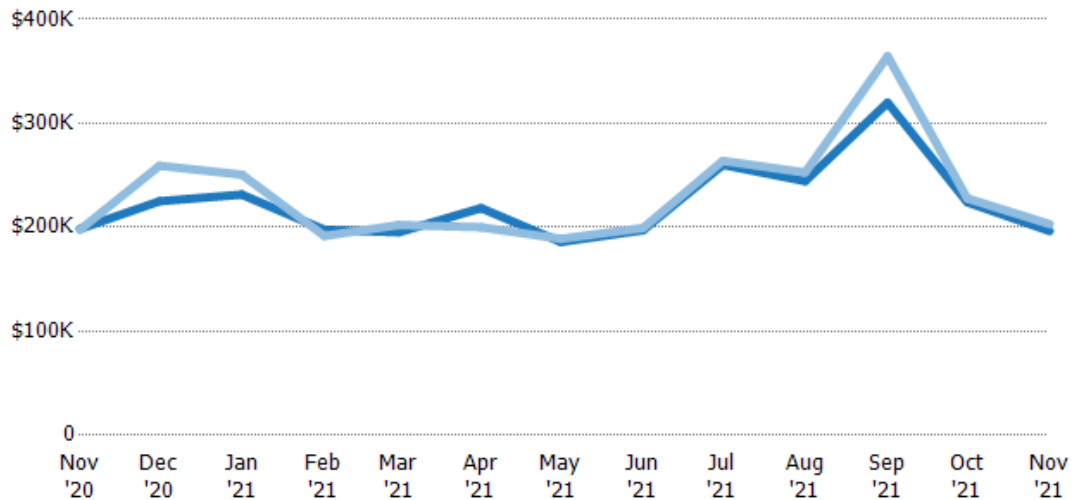
	Nov '20	Dec '20	Jan '21	Feb '21	Mar '21	Apr '21	May '21	Jun '21	Jul '21	Aug '21	Sep '21	Oct '21	Nov '21
Median List Price	\$165K	\$219K	\$249K	\$209K	\$212K	\$170K	\$169K	\$199K	\$240K	\$239K	\$234K	\$235K	\$199K
Median Sales Price	\$166K	\$214K	\$306K	\$207K	\$213K	\$170K	\$166K	\$204K	\$227K	\$239K	\$212K	\$228K	\$220K
Med Sales Price as a % of Med List Price	100%	98%	123%	99%	100%	100%	98%	102%	95%	100%	91%	97%	111%

## Average Sales Price vs Average Est Value

The average sales price as a percentage of the average AVM or RVM® valuation estimate for properties sold each month.

### Filters Used

ZIP: Saint Johnsbury, VT 05819,  
East Saint Johnsbury, VT 05838,  
Saint Johnsbury Center, VT 05863  
Property Type:  
Condo/Townhouse/Apt., Single  
Family



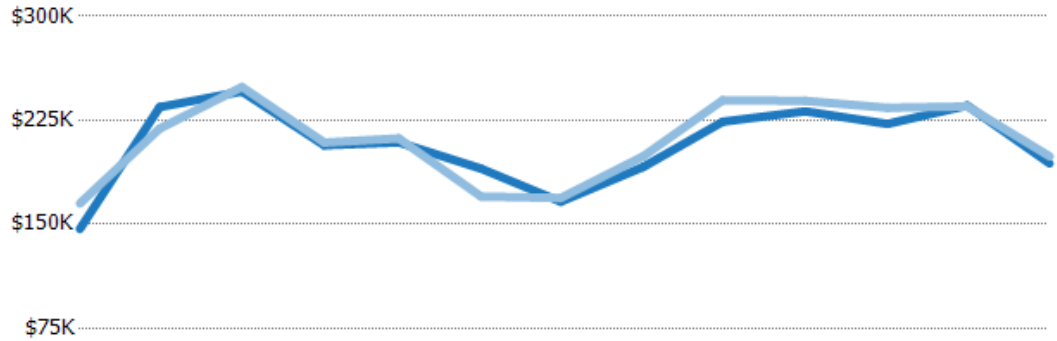
	Nov '20	Dec '20	Jan '21	Feb '21	Mar '21	Apr '21	May '21	Jun '21	Jul '21	Aug '21	Sep '21	Oct '21	Nov '21
Avg Est Value	\$198K	\$225K	\$231K	\$198K	\$195K	\$218K	\$186K	\$197K	\$260K	\$244K	\$320K	\$224K	\$196K
Avg Sales Price	\$197K	\$259K	\$251K	\$192K	\$202K	\$200K	\$189K	\$199K	\$264K	\$253K	\$365K	\$228K	\$203K
Avg Sales Price as a % of Avg Est Value	100%	115%	108%	97%	104%	92%	102%	101%	101%	103%	114%	102%	103%

## Median Sales Price vs Median Est Value

The median sales price as a percent of the median AVM or RVM® valuation estimate for properties sold each month.

### Filters Used

ZIP: Saint Johnsbury, VT 05819,  
 East Saint Johnsbury, VT 05838,  
 Saint Johnsbury Center, VT 05863  
 Property Type:  
 Condo/Townhouse/Apt., Single  
 Family



	Nov '20	Dec '20	Jan '21	Feb '21	Mar '21	Apr '21	May '21	Jun '21	Jul '21	Aug '21	Sep '21	Oct '21	Nov '21
Median Est Value	\$147K	\$235K	\$246K	\$207K	\$209K	\$190K	\$166K	\$191K	\$224K	\$231K	\$222K	\$236K	\$194K
Median Sales Price	\$165K	\$219K	\$249K	\$209K	\$212K	\$170K	\$169K	\$199K	\$240K	\$239K	\$234K	\$235K	\$199K
Med Sales Price as a % of Med Est Value	113%	93%	101%	101%	101%	89%	102%	104%	107%	103%	105%	100%	103%