

Summary of Key Listing and Sales Metrics

A summary of the key metrics selected to be included in the report. MLS sources where licensed.

Key Metrics	Jan 2021	Jan 2020	+ / -	YTD 2021	YTD 2020	+ / -
Listing Activity Charts Metrics						
New Listing Count	54	42	+28.6%	720	688	+4.7%
New Listing Volume	\$19,406,450	\$17,761,000	+9.3%	\$302,835,318	\$245,013,794	+23.6%
Active Listing Count	127	340	-62.6%	N/A	N/A	
Active Listing Volume	\$68,854,500	\$152,745,391	-54.9%	N/A	N/A	
Average Listing Price	\$542,161	\$449,251	+20.7%	\$509,483	\$434,425	+17.3%
Median Listing Price	\$290,000	\$307,450	-5.7%	\$329,714	\$299,425	+10.1%
Median Days in RPR	102	192	-46.9%	124.63	166.46	-25.1%
Months of Inventory	2	8.9	-78.2%	5.3	20	-73.5%
Absorption Rate	51.18%	11.18%	+40%	18.9%	5%	+13.9%
Sales Activity Charts Metrics						
New Pending Sales Count	46	41	+12.2%	866	622	+39.2%
New Pending Sales Volume	\$18,973,800	\$12,779,600	+48.5%	\$316,616,336	\$179,491,951	+76.4%
Pending Sales Count	93	47	+97.9%	N/A	N/A	
Pending Sales Volume	\$39,821,099	\$14,804,300	+169%	N/A	N/A	
Closed Sales Count	42	24	+75%	662	497	+33.2%
Closed Sales Volume	\$11,517,700	\$6,798,800	+69.4%	\$233,172,642	\$132,918,143	+75.4%
Average Sales Price	\$274,231	\$283,283	-3.2%	\$352,225	\$267,441	+31.7%
Median Sales Price	\$233,750	\$265,000	-11.8%	\$279,800	\$222,836	+25.6%

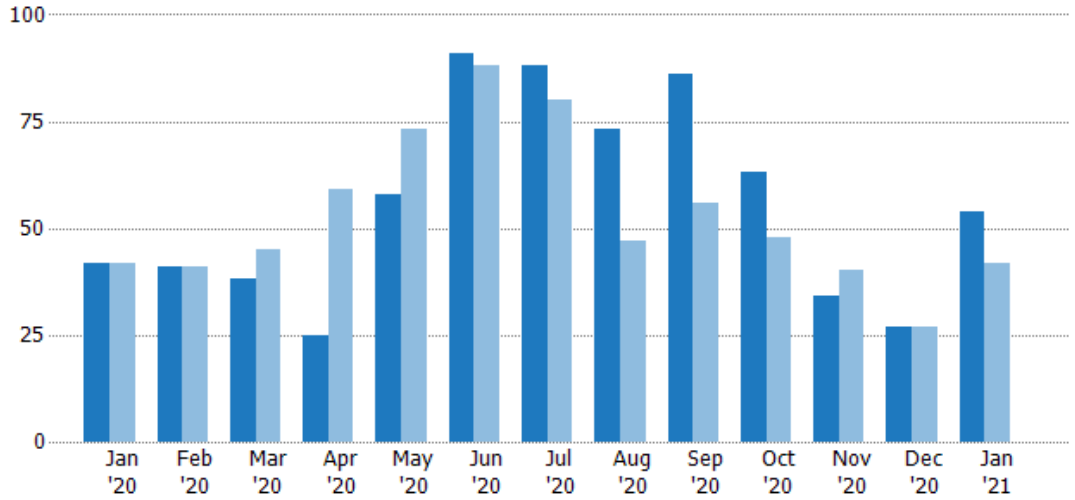
New Listings

The number of new residential listings that were added each month.

Filters Used

State: VT
 County: Bennington County, Vermont
 Property Type: Condo/Townhouse/Apt, Single Family Residence

Month/Year	Count	% Chg.
Jan '21	54	28.6%
Jan '20	42	0%
Jan '19	42	0%



Current Year	42	41	38	25	58	91	88	73	86	63	34	27	54
Prior Year	42	41	45	59	73	88	80	47	56	48	40	27	42
Percent Change from Prior Year	0%	0%	-16%	-58%	-21%	3%	10%	55%	54%	31%	-15%	0%	29%

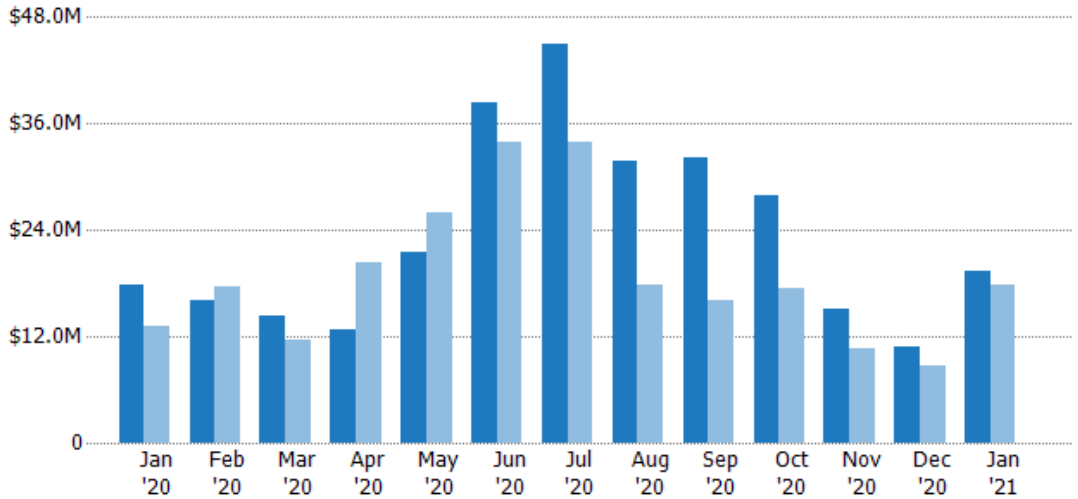
New Listing Volume

The sum of the listing price of residential listings that were added each month.

Filters Used

State: VT
 County: Bennington County, Vermont
 Property Type: Condo/Townhouse/Apt, Single Family Residence

Month/Year	Volume	% Chg.
Jan '21	\$19.4M	9.3%
Jan '20	\$17.8M	34.1%
Jan '19	\$13.2M	14.5%



Current Year	\$17.8M	\$16.1M	\$14.3M	\$12.8M	\$21.5M	\$38.3M	\$44.9M	\$31.7M	\$32.2M	\$27.8M	\$15.1M	\$10.8M	\$19.4M
Prior Year	\$13.2M	\$17.7M	\$11.6M	\$20.2M	\$25.9M	\$33.9M	\$34M	\$17.8M	\$16.1M	\$17.5M	\$10.6M	\$8.71M	\$17.8M
Percent Change from Prior Year	34%	-9%	23%	-37%	-17%	13%	32%	78%	100%	59%	42%	24%	9%

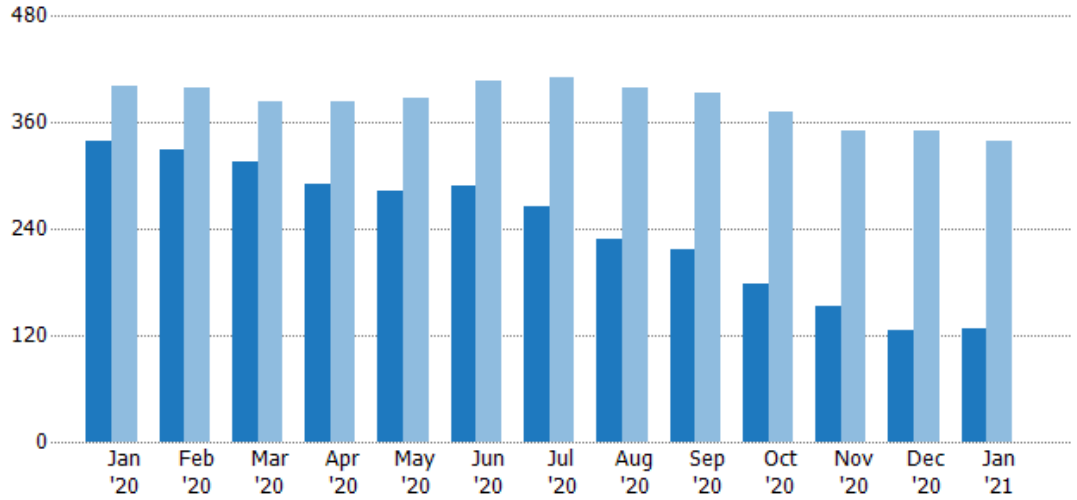
Active Listings

The number of active residential listings at the end of each month.

Filters Used

State: VT
 County: Bennington County, Vermont
 Property Type: Condo/Townhouse/Apt, Single Family Residence

Month/Year	Count	% Chg.
Jan '21	127	-62.6%
Jan '20	340	-15.4%
Jan '19	402	-1.5%



Current Year	340	330	316	291	283	289	265	228	216	179	152	126	127
Prior Year	402	400	383	384	387	407	410	400	394	372	350	350	340
Percent Change from Prior Year	-15%	-18%	-17%	-24%	-27%	-29%	-35%	-43%	-45%	-52%	-57%	-64%	-63%

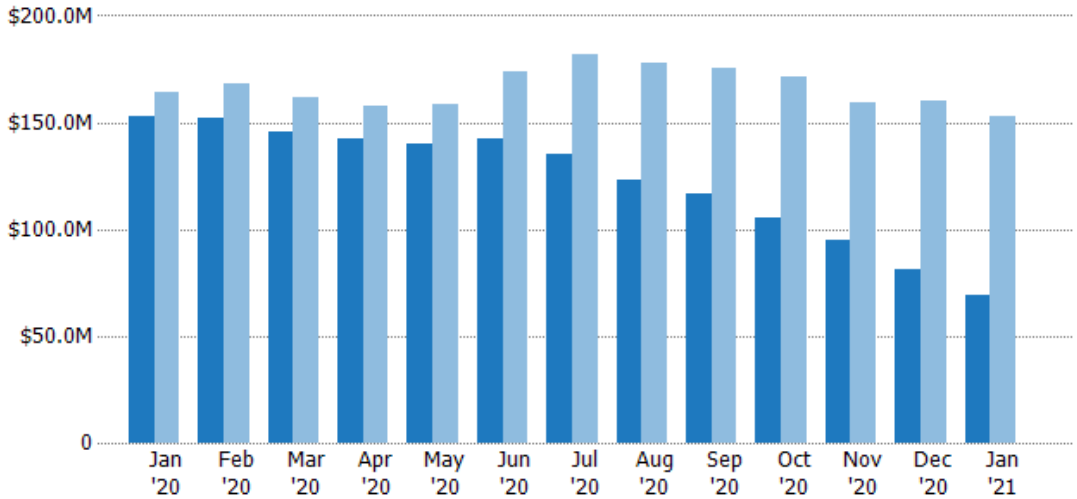
Active Listing Volume

The sum of the listing price of active residential listings at the end of each month.

Filters Used

State: VT
 County: Bennington County, Vermont
 Property Type: Condo/Townhouse/Apt, Single Family Residence

Month/Year	Volume	% Chg.
Jan '21	\$68.9M	-54.9%
Jan '20	\$153M	-6.8%
Jan '19	\$164M	-4.2%



Current Year	\$153M	\$152M	\$146M	\$143M	\$140M	\$143M	\$135M	\$123M	\$116M	\$106M	\$94.8M	\$81.4M	\$68.9M
Prior Year	\$164M	\$168M	\$162M	\$158M	\$159M	\$174M	\$182M	\$178M	\$175M	\$172M	\$159M	\$160M	\$153M
Percent Change from Prior Year	-7%	-10%	-10%	-10%	-12%	-18%	-26%	-31%	-34%	-38%	-41%	-49%	-55%

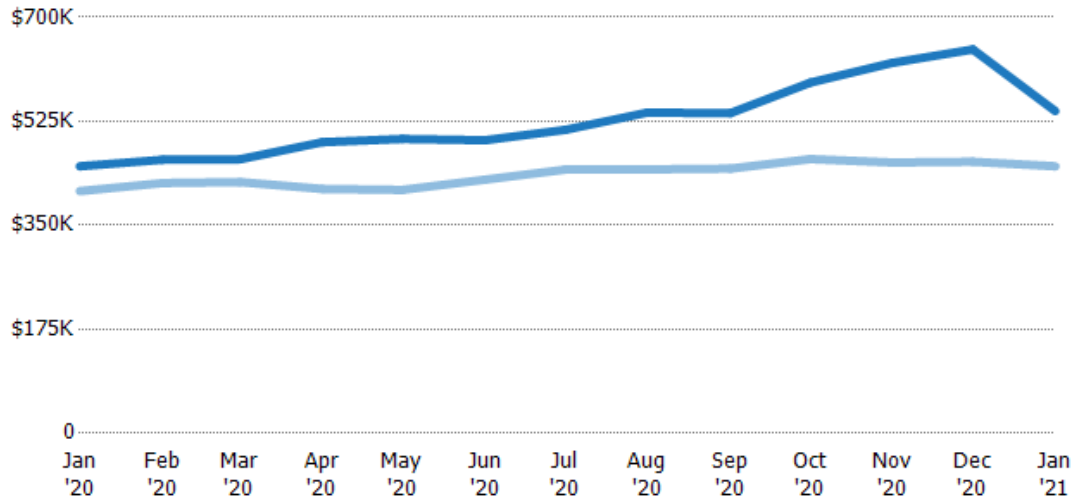
Average Listing Price

The average listing price of active residential listings at the end of each month.

Filters Used

State: VT
 County: Bennington County, Vermont
 Property Type: Condo/Townhouse/Apt, Single Family Residence

Month/Year	Price	% Chg.
Jan '21	\$542K	20.7%
Jan '20	\$449K	10.2%
Jan '19	\$408K	-2.7%



Current Year	\$449K	\$460K	\$461K	\$490K	\$495K	\$493K	\$510K	\$540K	\$539K	\$590K	\$623K	\$646K	\$542K
Prior Year	\$408K	\$421K	\$423K	\$411K	\$410K	\$427K	\$444K	\$444K	\$445K	\$461K	\$456K	\$457K	\$449K
Percent Change from Prior Year	10%	9%	9%	19%	21%	16%	15%	22%	21%	28%	37%	41%	21%

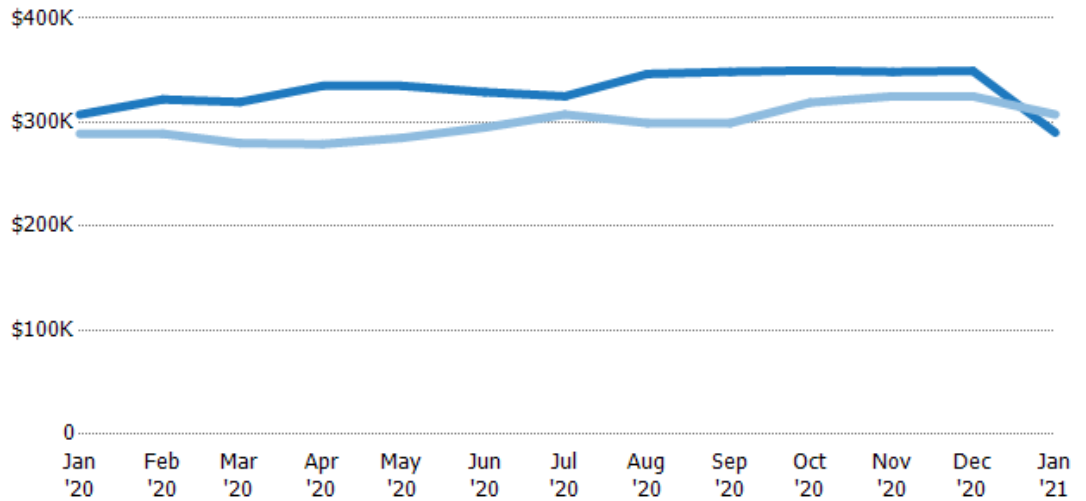
Median Listing Price

The median listing price of active residential listings at the end of each month.

Filters Used

State: VT
 County: Bennington County, Vermont
 Property Type: Condo/Townhouse/Apt, Single Family Residence

Month/Year	Price	% Chg.
Jan '21	\$290K	-5.7%
Jan '20	\$307K	6.4%
Jan '19	\$289K	-3.7%



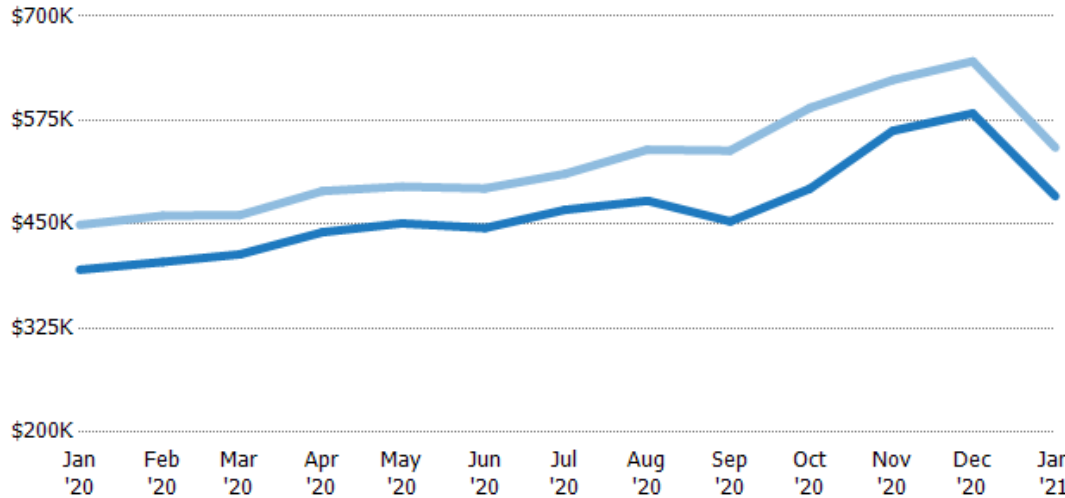
Current Year	\$307K	\$322K	\$319K	\$335K	\$335K	\$329K	\$325K	\$347K	\$349K	\$350K	\$349K	\$349K	\$290K
Prior Year	\$289K	\$289K	\$280K	\$279K	\$285K	\$295K	\$307K	\$299K	\$299K	\$319K	\$325K	\$325K	\$307K
Percent Change from Prior Year	6%	11%	14%	20%	18%	12%	6%	16%	16%	10%	7%	8%	-6%

Average Listing Price vs Average Est Value

The average listing price as a percentage of the average AVM or RVM® valuation estimate for active listings each month.

Filters Used

State: VT
 County: Bennington County, Vermont
 Property Type: Condo/Townhouse/Apt, Single Family Residence



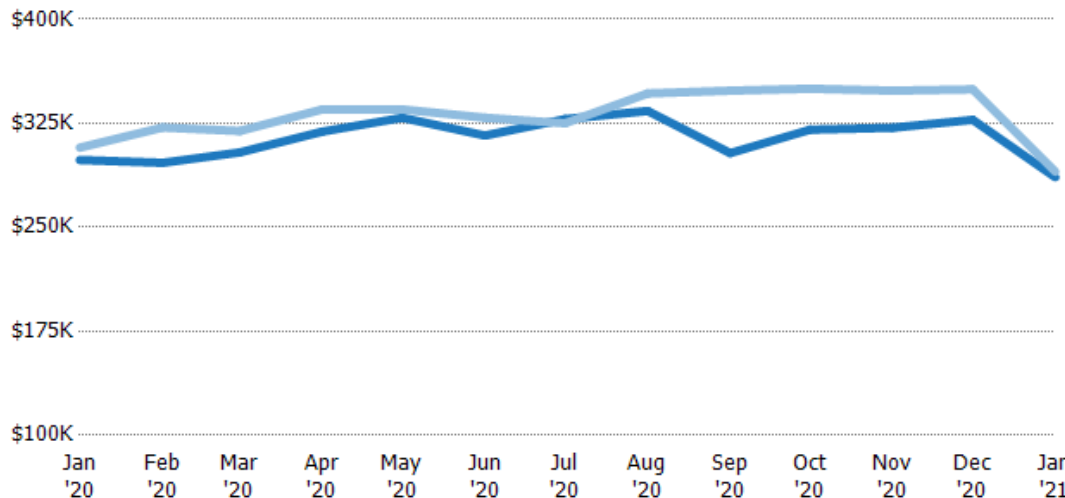
	Jan '20	Feb '20	Mar '20	Apr '20	May '20	Jun '20	Jul '20	Aug '20	Sep '20	Oct '20	Nov '20	Dec '20	Jan '21
Avg Est Value	\$395K	\$405K	\$414K	\$440K	\$451K	\$445K	\$467K	\$478K	\$454K	\$493K	\$562K	\$583K	\$484K
Avg Listing Price	\$449K	\$460K	\$461K	\$490K	\$495K	\$493K	\$510K	\$540K	\$539K	\$590K	\$623K	\$646K	\$542K
Avg Listing Price as a % of Avg Est Value	114%	114%	111%	111%	110%	111%	109%	113%	119%	120%	111%	111%	112%

Median Listing Price vs Median Est Value

The median listing price as a percentage of the median AVM or RVM® valuation estimate for active listings each month.

Filters Used

State: VT
 County: Bennington County, Vermont
 Property Type: Condo/Townhouse/Apt, Single Family Residence



	Jan '20	Feb '20	Mar '20	Apr '20	May '20	Jun '20	Jul '20	Aug '20	Sep '20	Oct '20	Nov '20	Dec '20	Jan '21
Median Est Value	\$299K	\$297K	\$304K	\$319K	\$329K	\$316K	\$328K	\$334K	\$304K	\$320K	\$322K	\$328K	\$286K
Median Listing Price	\$307K	\$322K	\$319K	\$335K	\$335K	\$329K	\$325K	\$347K	\$349K	\$350K	\$349K	\$349K	\$290K
Med Listing Price as a % of Med Est Value	103%	109%	105%	105%	102%	104%	99%	104%	115%	109%	108%	107%	101%

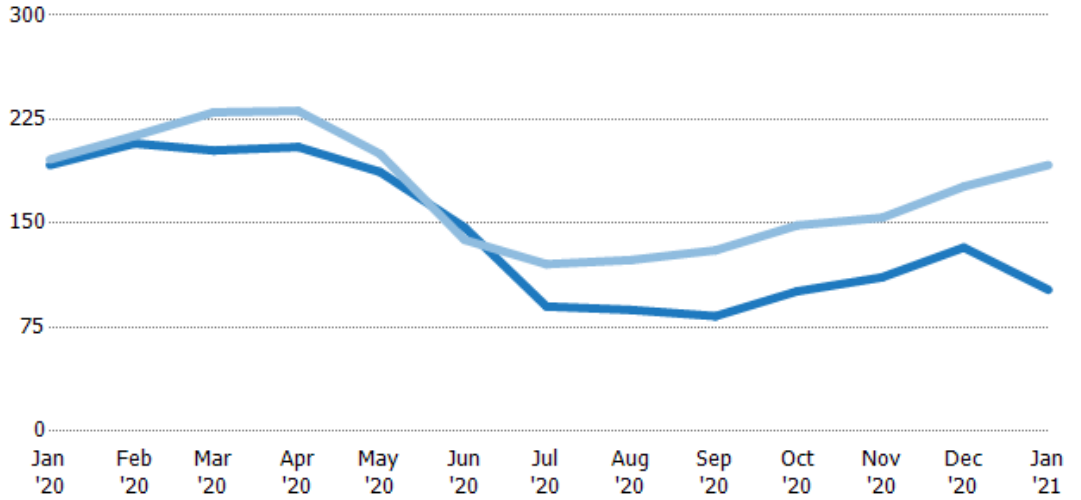
Median Days in RPR

The median number of days between when residential properties are first displayed as active listings in RPR and when accepted offers have been noted in RPR.

Filters Used

State: VT
 County: Bennington County, Vermont
 Property Type: Condo/Townhouse/Apt, Single Family Residence

Month/Year	Days	% Chg.
Jan '21	102	-46.9%
Jan '20	192	-2%
Jan '19	196	-8.7%



Current Year	192	208	203	205	187	147	90	87.5	83	101	111	133	102
Prior Year	196	213	230	231	200	138	121	124	131	149	154	177	192
Percent Change from Prior Year	-2%	-3%	-12%	-11%	-7%	7%	-25%	-29%	-36%	-32%	-28%	-25%	-47%

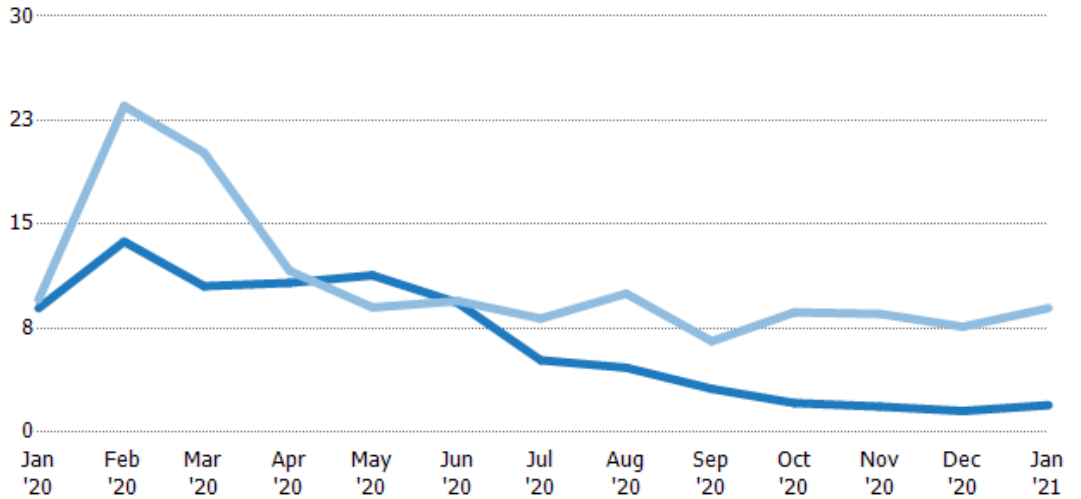
Months of Inventory

The number of months it would take to exhaust active listings at the current sales rate.

Filters Used

State: VT
 County: Bennington County, Vermont
 Property Type: Condo/Townhouse/Apt, Single Family Residence

Month/Year	Months	% Chg.
Jan '21	1.95	-78.2%
Jan '20	8.95	-6.5%
Jan '19	9.57	59.1%



Current Year	8.95	13.8	10.5	10.8	11.3	9.32	5.2	4.65	3.13	2.11	1.85	1.54	1.95
Prior Year	9.57	23.5	20.2	11.6	9	9.47	8.2	10	6.57	8.65	8.54	7.61	8.95
Percent Change from Prior Year	-7%	-42%	-48%	-7%	26%	-2%	-37%	-53%	-52%	-76%	-78%	-80%	-78%

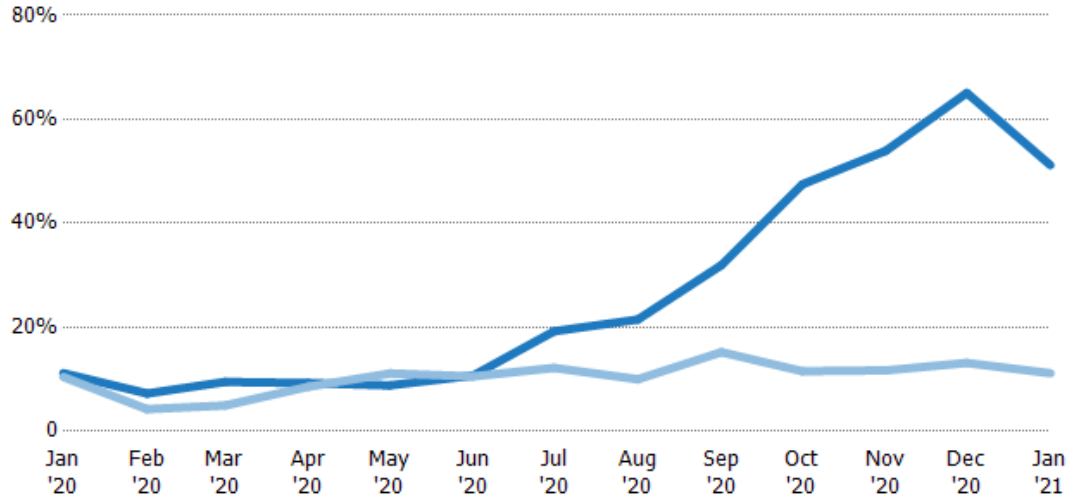
Absorption Rate

The percentage of inventory sold per month.

Filters Used

State: VT
 County: Bennington County, Vermont
 Property Type: Condo/Townhouse/Apt, Single Family Residence

Month/Year	Rate	Chg.
Jan '21	51%	-40%
Jan '20	11%	-0.7%
Jan '19	10%	-37.2%



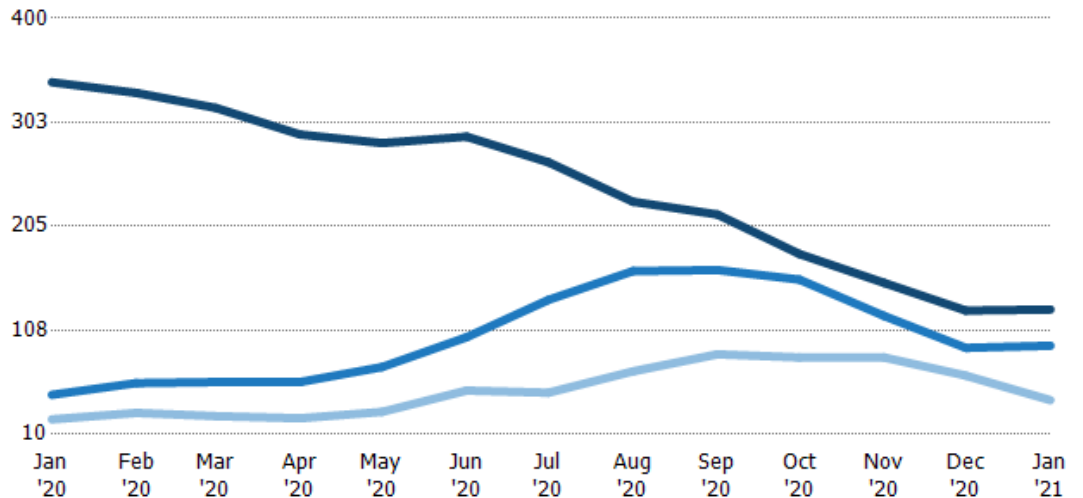
	Jan '20	Feb '20	Mar '20	Apr '20	May '20	Jun '20	Jul '20	Aug '20	Sep '20	Oct '20	Nov '20	Dec '20	Jan '21
Current Year	11%	7%	9%	9%	9%	11%	19%	21%	32%	47%	54%	65%	51%
Prior Year	10%	4%	5%	9%	11%	11%	12%	10%	15%	12%	12%	13%	11%
Change from Prior Year	-1%	-3%	-5%	-1%	2%	0%	-7%	-11%	-17%	-36%	-42%	-52%	-40%

Active/Pending/Sold Units

The number of residential properties that were Active, Pending and Sold each month.

Filters Used

State: VT
 County: Bennington County, Vermont
 Property Type: Condo/Townhouse/Apt, Single Family Residence



	Jan '20	Feb '20	Mar '20	Apr '20	May '20	Jun '20	Jul '20	Aug '20	Sep '20	Oct '20	Nov '20	Dec '20	Jan '21
Active	340	330	316	291	283	289	265	228	216	179	152	126	127
Pending	47	58	59	59	73	101	136	163	164	155	121	91	93
Sold	24	30	27	25	31	51	49	69	85	82	82	65	42

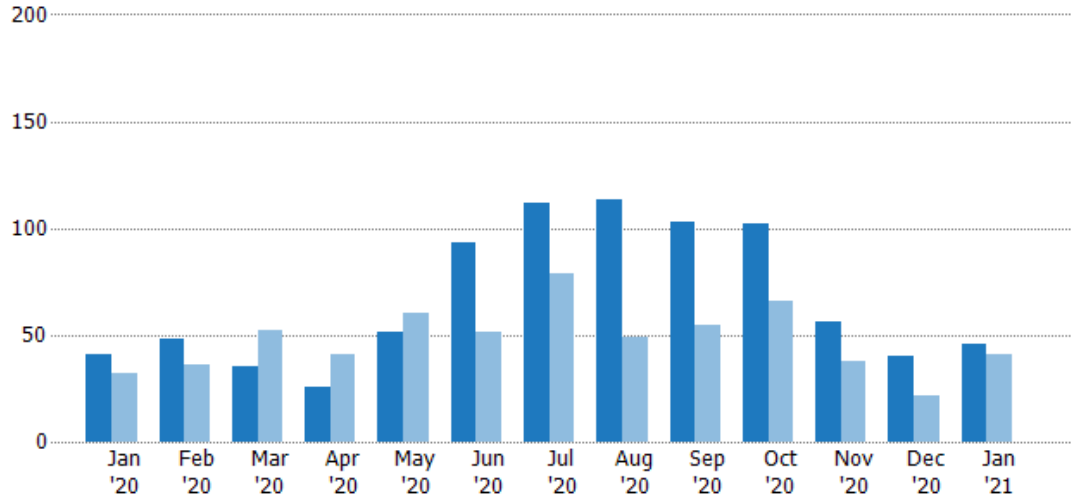
New Pending Sales

The number of residential properties with accepted offers that were added each month.

Filters Used

State: VT
 County: Bennington County, Vermont
 Property Type: Condo/Townhouse/Apt, Single Family Residence

Month/Year	Count	% Chg.
Jan '21	46	12.2%
Jan '20	41	28.1%
Jan '19	32	-28.1%



Current Year	41	48	35	26	51	93	112	113	103	102	56	40	46
Prior Year	32	36	52	41	60	51	79	49	55	66	38	22	41
Percent Change from Prior Year	28%	33%	-33%	-37%	-15%	82%	42%	131%	87%	55%	47%	82%	12%

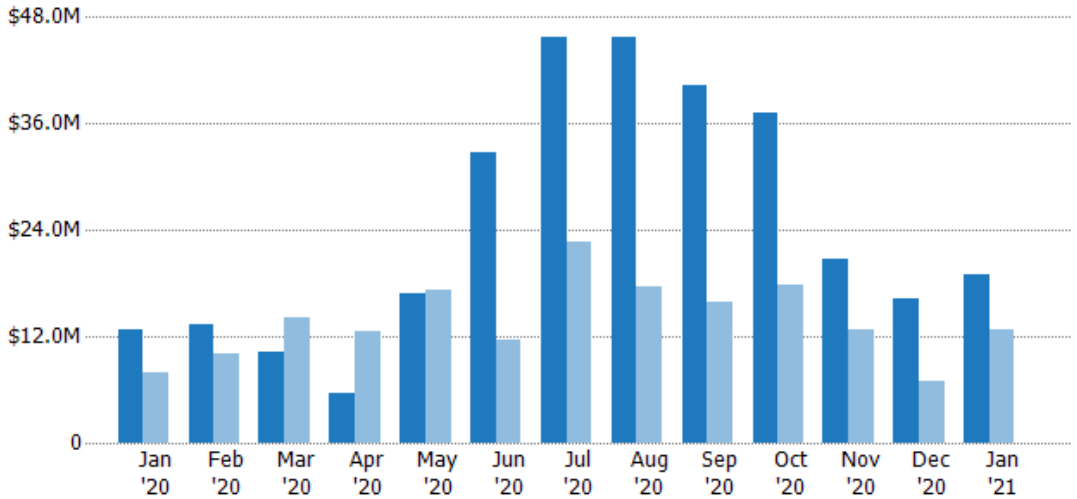
New Pending Sales Volume

The sum of the sales price of residential properties with accepted offers that were added each month.

Filters Used

State: VT
 County: Bennington County, Vermont
 Property Type: Condo/Townhouse/Apt, Single Family Residence

Month/Year	Volume	% Chg.
Jan '21	\$19M	48.5%
Jan '20	\$12.8M	63%
Jan '19	\$7.84M	-31.2%



Current Year	\$12.8M	\$13.4M	\$10.3M	\$5.67M	\$16.8M	\$32.7M	\$45.8M	\$45.6M	\$40.4M	\$37.2M	\$20.7M	\$16.3M	\$19M
Prior Year	\$7.84M	\$10M	\$14M	\$12.5M	\$17.2M	\$11.6M	\$22.7M	\$17.5M	\$15.9M	\$17.8M	\$12.7M	\$6.93M	\$12.8M
Percent Change from Prior Year	63%	34%	-27%	-55%	-2%	183%	102%	160%	154%	108%	63%	136%	48%

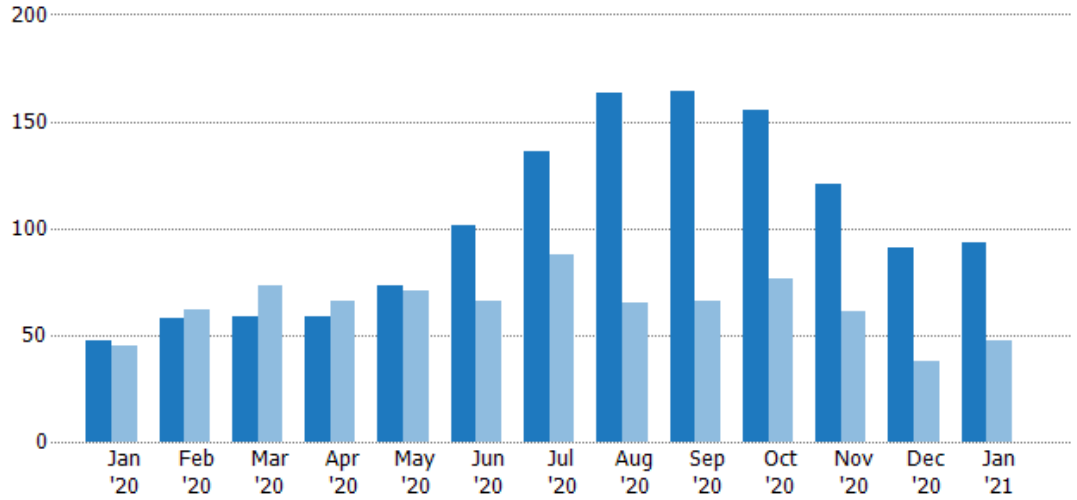
Pending Sales

The number of residential properties with accepted offers that were available at the end each month.

Filters Used

State: VT
 County: Bennington County, Vermont
 Property Type: Condo/Townhouse/Apt, Single Family Residence

Month/Year	Count	% Chg.
Jan '21	93	97.9%
Jan '20	47	4.4%
Jan '19	45	-20%



	Jan '20	Feb '20	Mar '20	Apr '20	May '20	Jun '20	Jul '20	Aug '20	Sep '20	Oct '20	Nov '20	Dec '20	Jan '21
Current Year	47	58	59	59	73	101	136	163	164	155	121	91	93
Prior Year	45	62	73	66	71	66	88	65	66	76	61	38	47
Percent Change from Prior Year	4%	-6%	-19%	-11%	3%	53%	55%	151%	148%	104%	98%	139%	98%

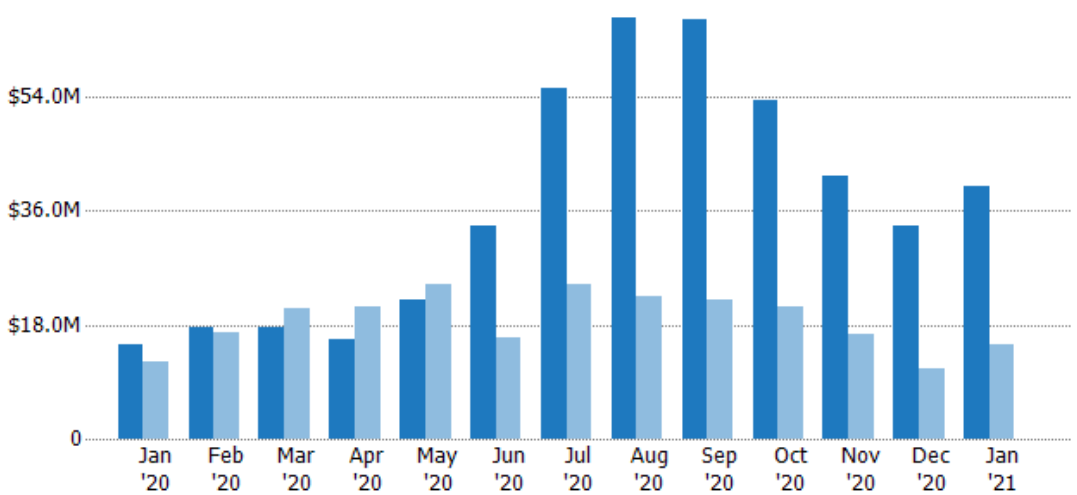
Pending Sales Volume

The sum of the sales price of residential properties with accepted offers that were available at the end of each month.

Filters Used

State: VT
 County: Bennington County, Vermont
 Property Type: Condo/Townhouse/Apt, Single Family Residence

Month/Year	Volume	% Chg.
Jan '21	\$39.8M	169%
Jan '20	\$14.8M	22.5%
Jan '19	\$12.1M	-33.9%



	Jan '20	Feb '20	Mar '20	Apr '20	May '20	Jun '20	Jul '20	Aug '20	Sep '20	Oct '20	Nov '20	Dec '20	Jan '21
Current Year	\$14.8M	\$17.6M	\$17.6M	\$15.7M	\$22M	\$33.6M	\$55.2M	\$66.6M	\$66.1M	\$53.4M	\$41.4M	\$33.5M	\$39.8M
Prior Year	\$12.1M	\$16.8M	\$20.5M	\$20.9M	\$24.4M	\$16.1M	\$24.5M	\$22.4M	\$21.8M	\$21M	\$16.5M	\$11.1M	\$14.8M
Percent Change from Prior Year	23%	5%	-14%	-25%	-10%	109%	126%	197%	203%	155%	152%	203%	169%

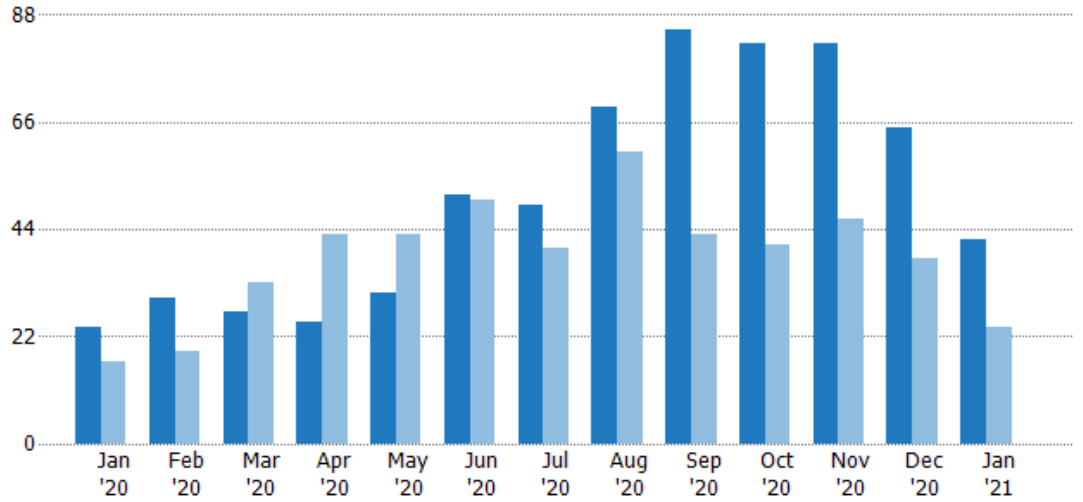
Closed Sales

The total number of residential properties sold each month.

Filters Used

State: VT
 County: Bennington County, Vermont
 Property Type: Condo/Townhouse/Apt, Single Family Residence

Month/Year	Count	% Chg.
Jan '21	42	75%
Jan '20	24	41.2%
Jan '19	17	41.2%



	Jan '20	Feb '20	Mar '20	Apr '20	May '20	Jun '20	Jul '20	Aug '20	Sep '20	Oct '20	Nov '20	Dec '20	Jan '21
Current Year	24	30	27	25	31	51	49	69	85	82	82	65	42
Prior Year	17	19	33	43	43	50	40	60	43	41	46	38	24
Percent Change from Prior Year	41%	58%	-18%	-42%	-28%	2%	23%	15%	98%	100%	78%	71%	75%

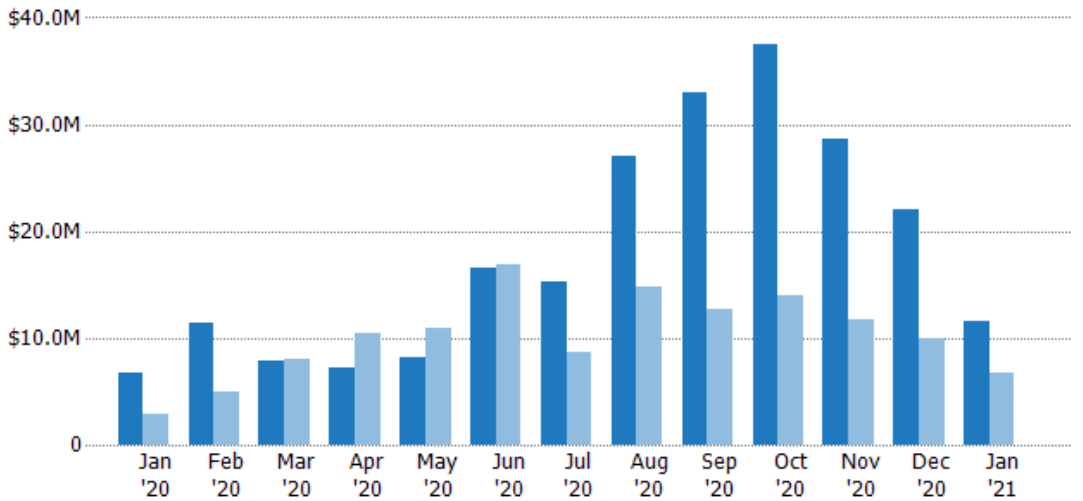
Closed Sales Volume

The sum of the sales price of residential properties sold each month.

Filters Used

State: VT
 County: Bennington County, Vermont
 Property Type: Condo/Townhouse/Apt, Single Family Residence

Month/Year	Volume	% Chg.
Jan '21	\$11.5M	69.4%
Jan '20	\$6.8M	143.1%
Jan '19	\$2.8M	129.2%



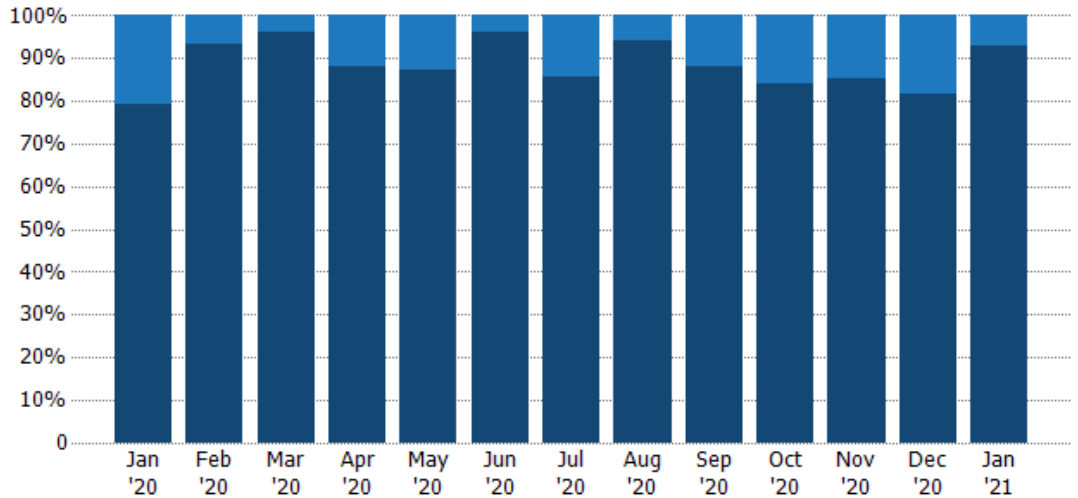
	Jan '20	Feb '20	Mar '20	Apr '20	May '20	Jun '20	Jul '20	Aug '20	Sep '20	Oct '20	Nov '20	Dec '20	Jan '21
Current Year	\$6.8M	\$11.5M	\$7.8M	\$7.28M	\$8.17M	\$16.5M	\$15.3M	\$27.1M	\$33M	\$37.6M	\$28.6M	\$22.1M	\$11.5M
Prior Year	\$2.8M	\$4.96M	\$8.07M	\$10.5M	\$11M	\$16.9M	\$8.61M	\$14.8M	\$12.8M	\$13.9M	\$11.8M	\$9.99M	\$6.8M
Percent Change from Prior Year	143%	131%	-3%	-31%	-25%	-2%	77%	82%	159%	170%	143%	121%	69%

Closed Sales by Property Type

The percentage of residential properties sold each month by property type.

Filters Used

State: VT
 County: Bennington County, Vermont
 Property Type: Condo/Townhouse/Apt, Single Family Residence



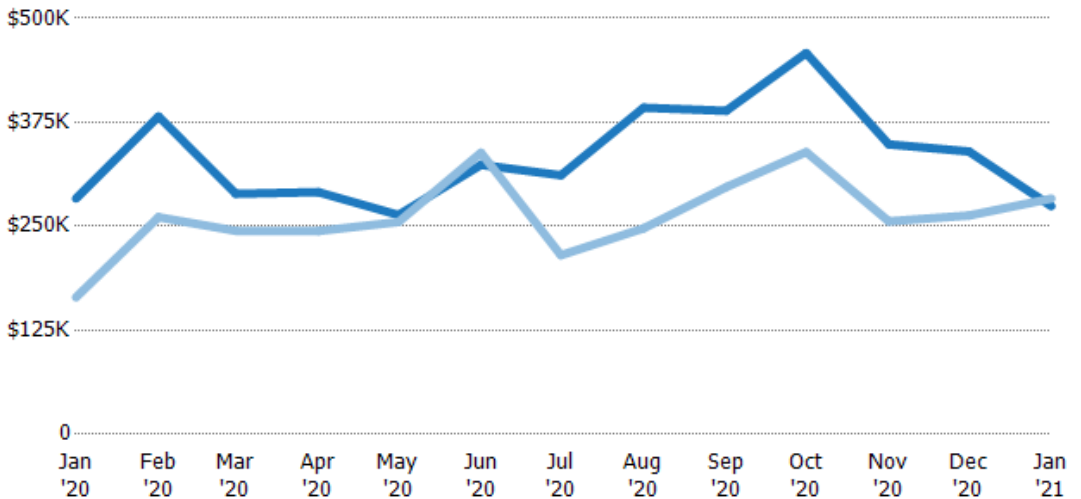
Condo/Townhouse	21%	7%	4%	12%	13%	4%	14%	6%	12%	16%	15%	18%	7%
Single Family Residence	79%	93%	96%	88%	87%	96%	86%	94%	88%	84%	85%	82%	93%

Average Sales Price

The average sales price of the residential properties sold each month.

Filters Used

State: VT
 County: Bennington County, Vermont
 Property Type: Condo/Townhouse/Apt, Single Family Residence



Month/Year	Price	% Chg.
Jan '21	\$274K	-3.2%
Jan '20	\$283K	72.2%
Jan '19	\$165K	62.3%

Current Year	\$283K	\$382K	\$289K	\$291K	\$264K	\$324K	\$311K	\$392K	\$389K	\$458K	\$348K	\$340K	\$274K
Prior Year	\$165K	\$261K	\$244K	\$244K	\$255K	\$338K	\$215K	\$247K	\$297K	\$339K	\$256K	\$263K	\$283K
Percent Change from Prior Year	72%	46%	18%	19%	3%	-4%	45%	59%	31%	35%	36%	29%	-3%

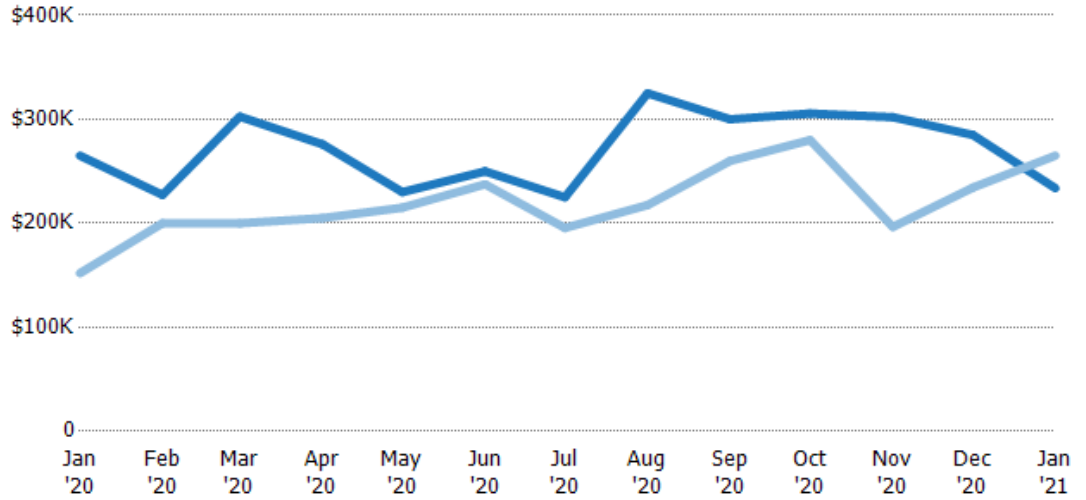
Median Sales Price

The median sales price of the residential properties sold each month.

Filters Used

State: VT
 County: Bennington County, Vermont
 Property Type: Condo/Townhouse/Apt, Single Family Residence

Month/Year	Price	% Chg.
Jan '21	\$234K	-11.8%
Jan '20	\$265K	74.3%
Jan '19	\$152K	28.3%



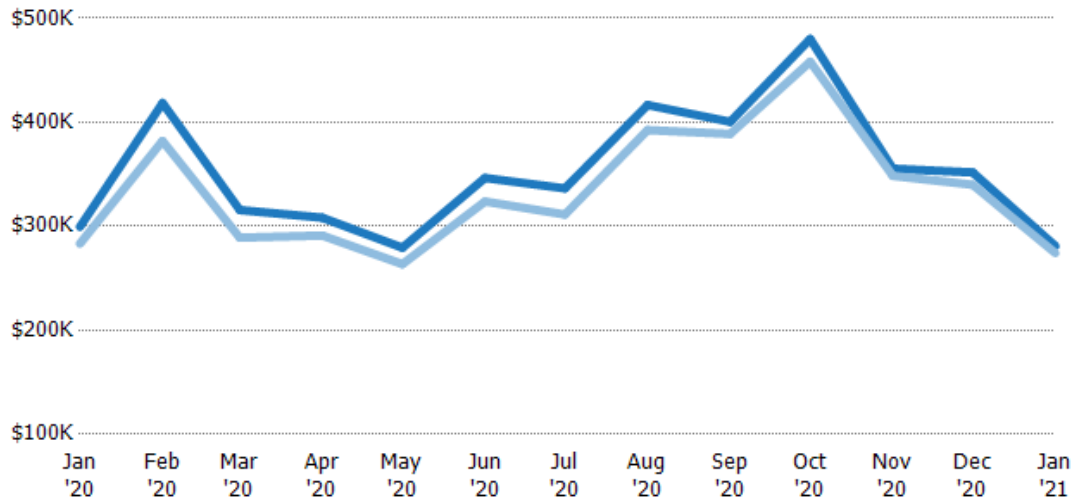
Current Year	\$265K	\$227K	\$303K	\$276K	\$230K	\$250K	\$225K	\$325K	\$300K	\$306K	\$302K	\$285K	\$234K
Prior Year	\$152K	\$200K	\$200K	\$205K	\$215K	\$238K	\$196K	\$218K	\$260K	\$280K	\$197K	\$234K	\$265K
Percent Change from Prior Year	74%	14%	51%	35%	7%	5%	15%	49%	15%	9%	54%	22%	-12%

Average Sales Price vs Average Listing Price

The average sales price as a percentage of the average listing price for properties sold each month.

Filters Used

State: VT
 County: Bennington County, Vermont
 Property Type: Condo/Townhouse/Apt, Single Family Residence



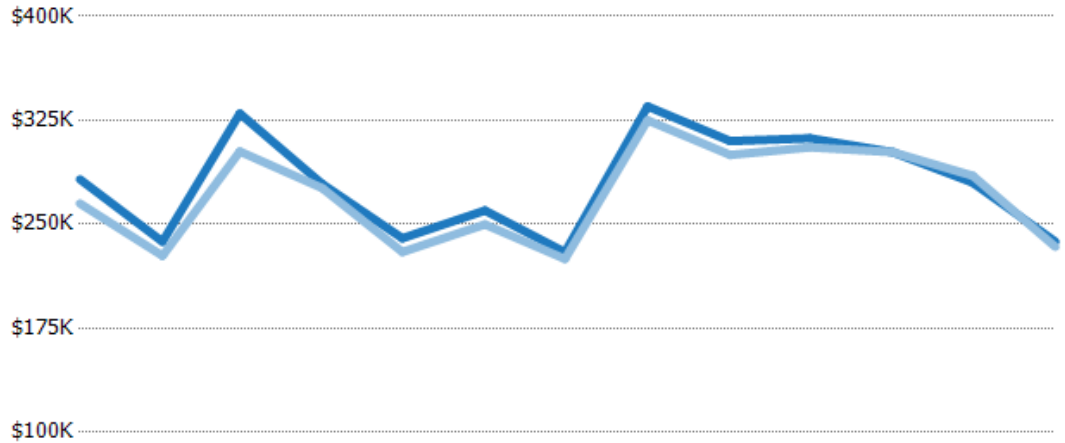
Avg List Price	\$299K	\$418K	\$316K	\$308K	\$279K	\$346K	\$336K	\$417K	\$400K	\$480K	\$355K	\$352K	\$281K
Avg Sales Price	\$283K	\$382K	\$289K	\$291K	\$264K	\$324K	\$311K	\$392K	\$389K	\$458K	\$348K	\$340K	\$274K
Avg Sales Price as a % of Avg List Price	95%	91%	92%	94%	94%	93%	93%	94%	97%	95%	98%	97%	98%

Median Sales Price vs Median Listing Price

The median sales price as a percentage of the median listing price for properties sold each month.

Filters Used

State: VT
 County: Bennington County, Vermont
 Property Type: Condo/Townhouse/Apt, Single Family Residence



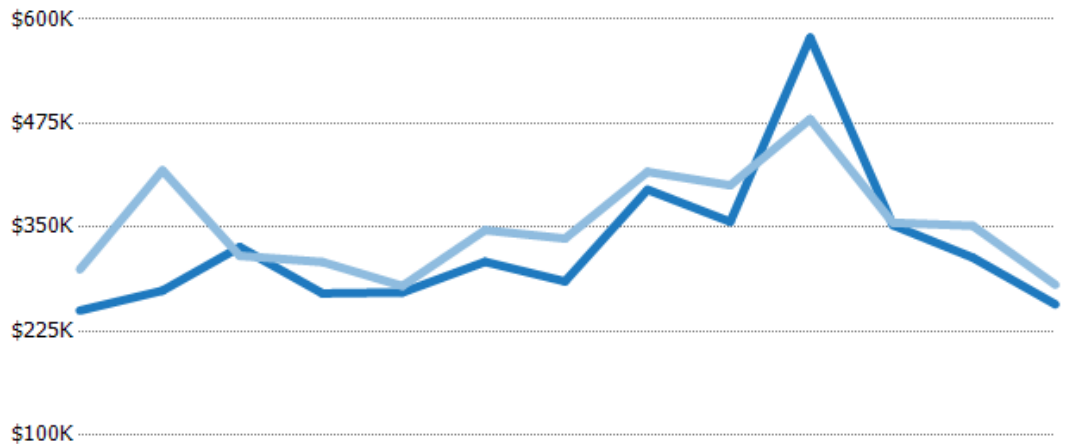
	Jan '20	Feb '20	Mar '20	Apr '20	May '20	Jun '20	Jul '20	Aug '20	Sep '20	Oct '20	Nov '20	Dec '20	Jan '21
Median List Price	\$282K	\$237K	\$330K	\$279K	\$240K	\$260K	\$230K	\$335K	\$310K	\$312K	\$302K	\$280K	\$238K
Median Sales Price	\$265K	\$227K	\$303K	\$276K	\$230K	\$250K	\$225K	\$325K	\$300K	\$306K	\$302K	\$285K	\$234K
Med Sales Price as a % of Med List Price	94%	96%	92%	99%	96%	96%	98%	97%	97%	98%	100%	102%	98%

Average Sales Price vs Average Est Value

The average sales price as a percentage of the average AVM or RVM® valuation estimate for properties sold each month.

Filters Used

State: VT
 County: Bennington County, Vermont
 Property Type: Condo/Townhouse/Apt, Single Family Residence



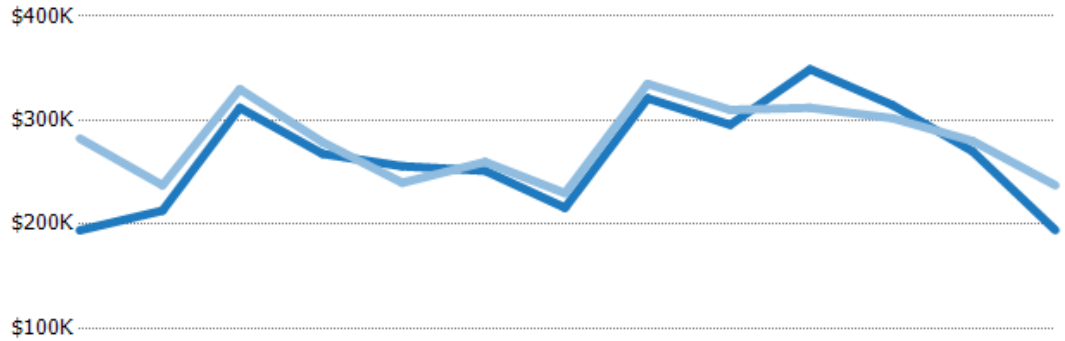
	Jan '20	Feb '20	Mar '20	Apr '20	May '20	Jun '20	Jul '20	Aug '20	Sep '20	Oct '20	Nov '20	Dec '20	Jan '21
Avg Est Value	\$250K	\$274K	\$326K	\$270K	\$272K	\$309K	\$285K	\$395K	\$357K	\$578K	\$353K	\$314K	\$257K
Avg Sales Price	\$299K	\$418K	\$316K	\$308K	\$279K	\$346K	\$336K	\$417K	\$400K	\$480K	\$355K	\$352K	\$281K
Avg Sales Price as a % of Avg Est Value	120%	153%	97%	114%	103%	112%	118%	105%	112%	83%	101%	112%	109%

Median Sales Price vs Median Est Value

The median sales price as a percent of the median AVM or RVM® valuation estimate for properties sold each month.

Filters Used

State: VT
 County: Bennington County, Vermont
 Property Type: Condo/Townhouse/Apt, Single Family Residence



	Jan '20	Feb '20	Mar '20	Apr '20	May '20	Jun '20	Jul '20	Aug '20	Sep '20	Oct '20	Nov '20	Dec '20	Jan '21
Median Est Value	\$194K	\$213K	\$312K	\$268K	\$256K	\$252K	\$216K	\$321K	\$296K	\$349K	\$315K	\$270K	\$194K
Median Sales Price	\$282K	\$237K	\$330K	\$279K	\$240K	\$260K	\$230K	\$335K	\$310K	\$312K	\$302K	\$280K	\$238K
Med Sales Price as a % of Med Est Value	145%	111%	106%	104%	94%	103%	107%	104%	105%	89%	96%	104%	122%