

Summary of Key Listing and Sales Metrics

A summary of the key metrics selected to be included in the report. MLS sources where licensed.

Key Metrics	May 2020	May 2019	+ / -	YTD 2020	YTD 2019	+ / -
Listing Activity Charts Metrics						
New Listing Count	8	13	-38.5%	32	35	-8.6%
New Listing Volume	\$1,712,500	\$2,892,600	-40.8%	\$6,387,260	\$6,766,700	-5.6%
Active Listing Count	26	50	-48%	N/A	N/A	
Active Listing Volume	\$6,671,400	\$11,744,584	-43.2%	N/A	N/A	
Average Listing Price	\$256,592	\$234,892	+9.2%	\$219,228	\$216,772	+1.1%
Median Listing Price	\$227,000	\$212,993	+6.6%	\$182,031	\$199,570	-8.8%
Median Days in RPR	154	179	-14%	184.08	216.26	-14.9%
Months of Inventory	6.5	16.7	-61%	9.3	11.7	-20.8%
Absorption Rate	15.38%	6%	+9.4%	10.8%	8.55%	+2.2%
Sales Activity Charts Metrics						
New Pending Sales Count	15	8	+87.5%	40	27	+48.1%
New Pending Sales Volume	\$3,195,460	\$1,150,200	+177.8%	\$6,259,979	\$4,168,100	+50.2%
Pending Sales Count	19	9	+111.1%	N/A	N/A	
Pending Sales Volume	\$3,653,780	\$1,360,300	+168.6%	N/A	N/A	
Closed Sales Count	7	6	+16.7%	25	19	+31.6%
Closed Sales Volume	\$1,016,000	\$1,080,000	-5.9%	\$2,967,129	\$2,762,800	+7.4%
Average Sales Price	\$145,143	\$180,000	-19.4%	\$118,685	\$145,411	-18.4%
Median Sales Price	\$140,000	\$141,500	-1.1%	\$119,324	\$133,479	-10.6%

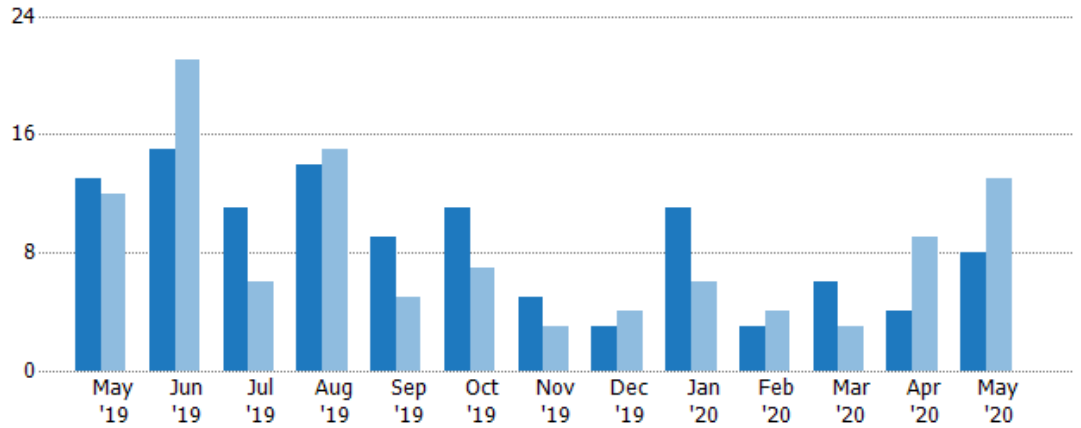
New Listings

The number of new residential listings that were added each month.

Filters Used

ZIP: Newport, VT 05855
 Property Type:
 Condo/Townhouse/Apt, Single
 Family Residence

Month/Year	Count	% Chg.
May '20	8	-38.5%
May '19	13	8.3%
May '18	12	25%



	May '19	Jun '19	Jul '19	Aug '19	Sep '19	Oct '19	Nov '19	Dec '19	Jan '20	Feb '20	Mar '20	Apr '20	May '20
Current Year	13	15	11	14	9	11	5	3	11	3	6	4	8
Prior Year	12	21	6	15	5	7	3	4	6	4	3	9	13
Percent Change from Prior Year	8%	-29%	83%	-7%	80%	57%	67%	-25%	83%	-25%	100%	-56%	-38%

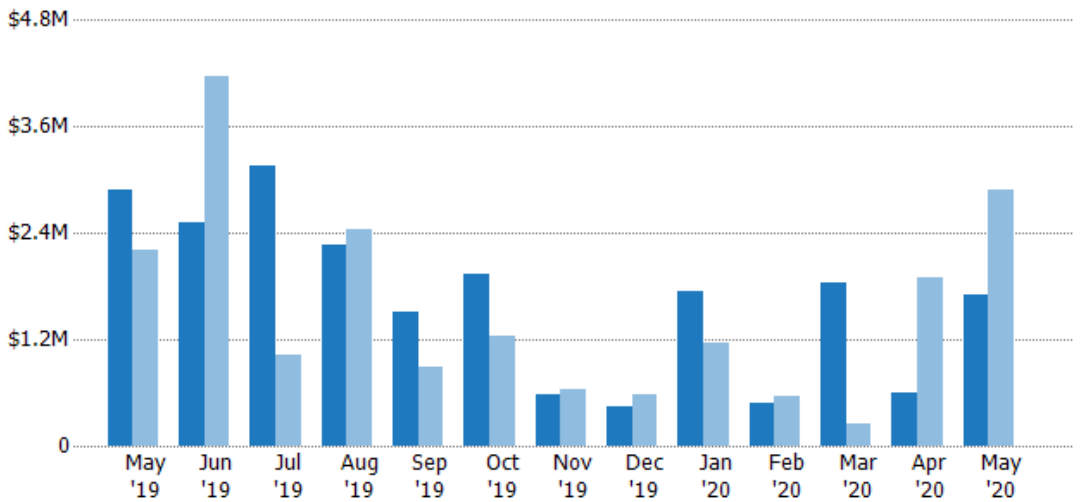
New Listing Volume

The sum of the listing price of residential listings that were added each month.

Filters Used

ZIP: Newport, VT 05855
 Property Type:
 Condo/Townhouse/Apt, Single
 Family Residence

Month/Year	Volume	% Chg.
May '20	\$1.71M	-40.8%
May '19	\$2.89M	31.1%
May '18	\$2.21M	26.2%



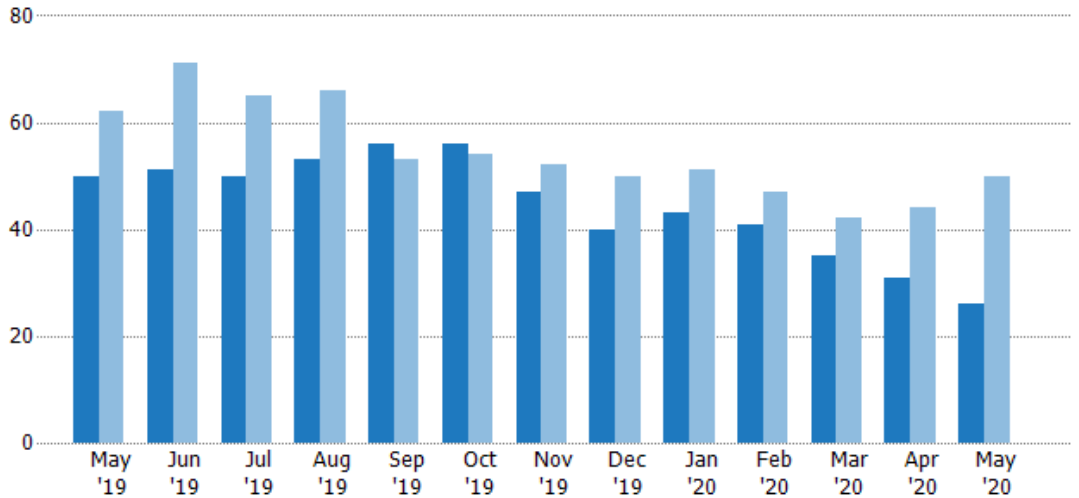
	May '19	Jun '19	Jul '19	Aug '19	Sep '19	Oct '19	Nov '19	Dec '19	Jan '20	Feb '20	Mar '20	Apr '20	May '20
Current Year	\$2.89M	\$2.51M	\$3.16M	\$2.27M	\$1.51M	\$1.93M	\$575K	\$444K	\$1.75M	\$489K	\$1.84M	\$595K	\$1.71M
Prior Year	\$2.21M	\$4.17M	\$1.02M	\$2.45M	\$892K	\$1.24M	\$644K	\$584K	\$1.16M	\$560K	\$253K	\$1.9M	\$2.89M
Percent Change from Prior Year	31%	-40%	209%	-7%	69%	56%	-11%	-24%	51%	-13%	631%	-69%	-41%

Active Listings

The number of active residential listings at the end of each month.

Filters Used

ZIP: Newport, VT 05855
 Property Type:
 Condo/Townhouse/Apt, Single
 Family Residence



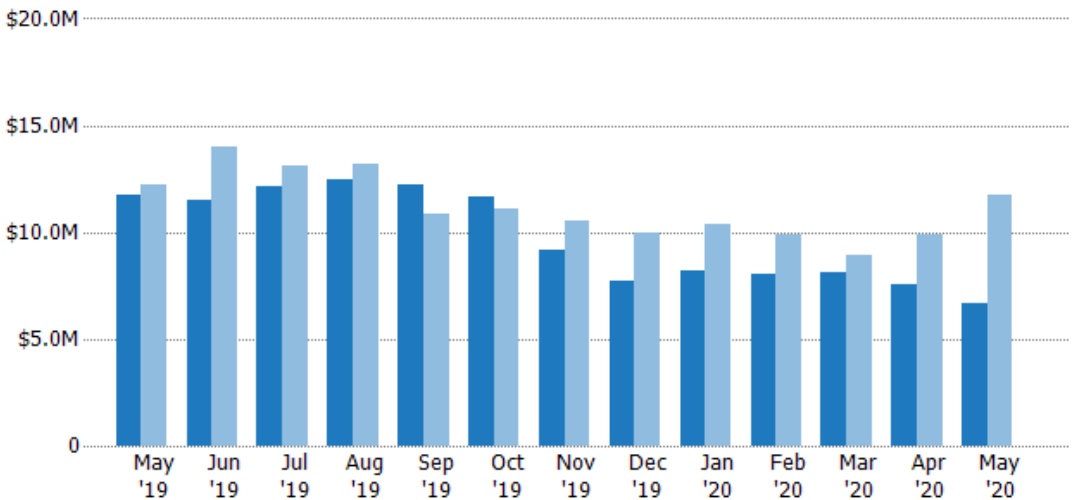
Month/Year	Count	% Chg.
May '20	26	-48%
May '19	50	-19.4%
May '18	62	-9.7%

Active Listing Volume

The sum of the listing price of active residential listings at the end of each month.

Filters Used

ZIP: Newport, VT 05855
 Property Type:
 Condo/Townhouse/Apt, Single
 Family Residence



Month/Year	Volume	% Chg.
May '20	\$6.67M	-43.2%
May '19	\$11.7M	-4%
May '18	\$12.2M	-9.8%

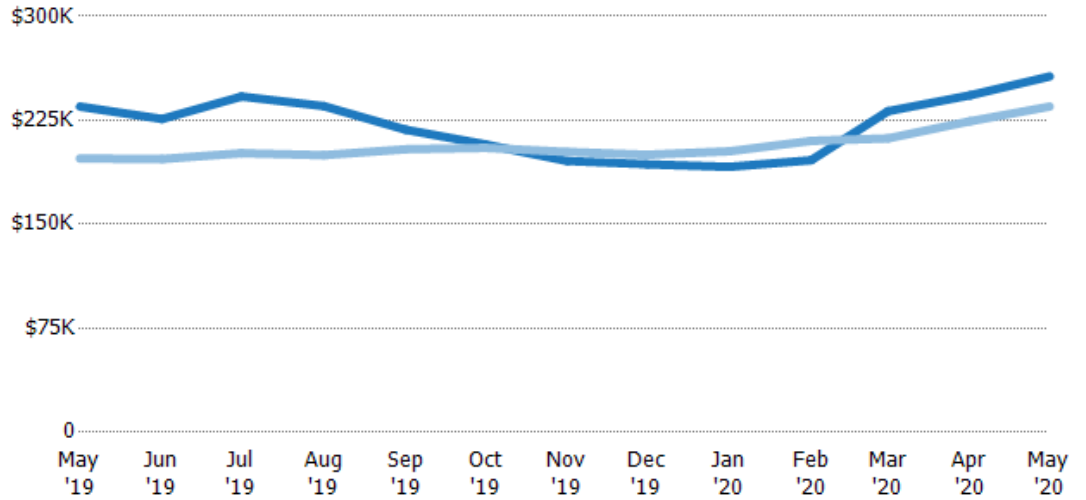
Average Listing Price

The average listing price of active residential listings at the end of each month.

Filters Used

ZIP: Newport, VT 05855
 Property Type:
 Condo/Townhouse/Apt, Single
 Family Residence

Month/ Year	Price	% Chg.
May '20	\$257K	9.2%
May '19	\$235K	19%
May '18	\$197K	-0.1%



Current Year	\$235K	\$226K	\$242K	\$235K	\$218K	\$208K	\$196K	\$193K	\$191K	\$196K	\$232K	\$243K	\$257K
Prior Year	\$197K	\$197K	\$201K	\$200K	\$204K	\$205K	\$202K	\$200K	\$203K	\$210K	\$212K	\$224K	\$235K
Percent Change from Prior Year	19%	15%	20%	18%	7%	1%	-3%	-3%	-6%	-7%	9%	8%	9%

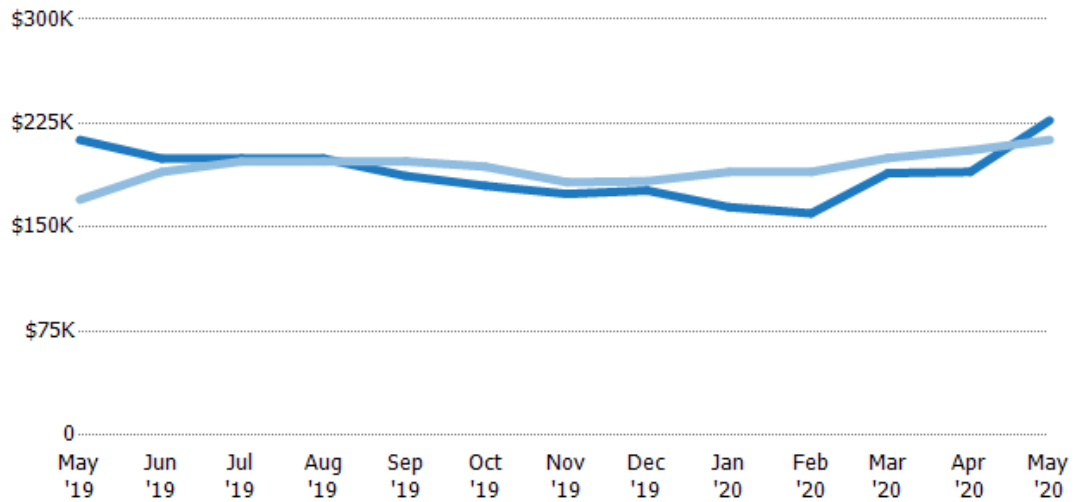
Median Listing Price

The median listing price of active residential listings at the end of each month.

Filters Used

ZIP: Newport, VT 05855
 Property Type:
 Condo/Townhouse/Apt, Single
 Family Residence

Month/ Year	Price	% Chg.
May '20	\$227K	6.6%
May '19	\$213K	25.4%
May '18	\$170K	1.4%



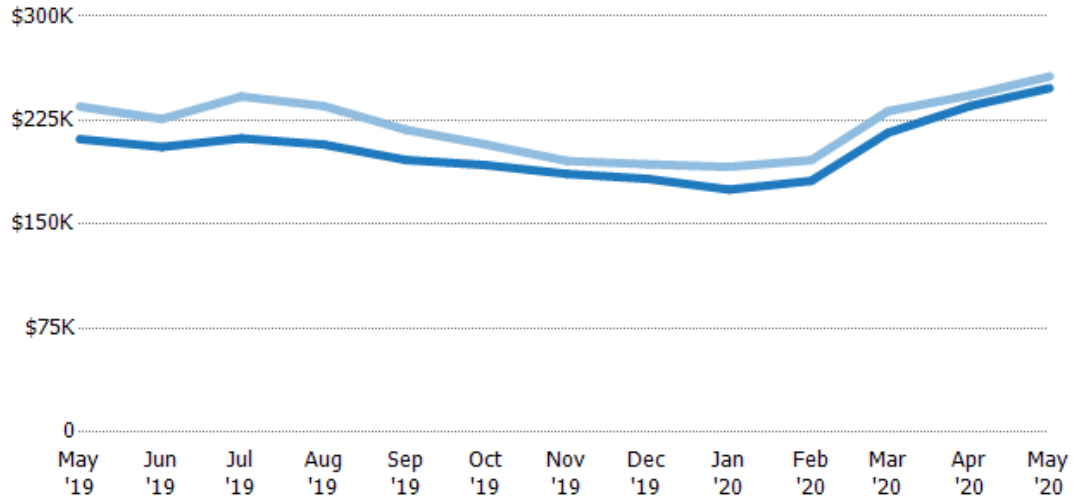
Current Year	\$213K	\$200K	\$200K	\$200K	\$187K	\$180K	\$174K	\$177K	\$165K	\$160K	\$189K	\$190K	\$227K
Prior Year	\$170K	\$190K	\$198K	\$198K	\$198K	\$194K	\$182K	\$183K	\$190K	\$190K	\$200K	\$205K	\$213K
Percent Change from Prior Year	25%	5%	1%	1%	-5%	-7%	-5%	-4%	-13%	-16%	-5%	-8%	7%

Average Listing Price vs Average Est Value

The average listing price as a percentage of the average AVM or RVM® valuation estimate for active listings each month.

Filters Used

ZIP: Newport, VT 05855
 Property Type:
 Condo/Townhouse/Apt, Single
 Family Residence



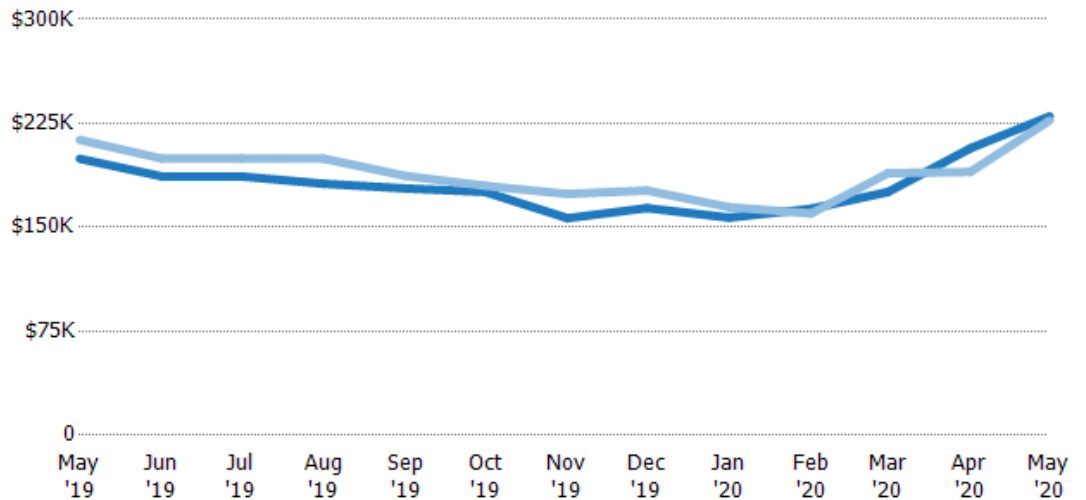
Avg Est Value	\$211K	\$206K	\$212K	\$207K	\$196K	\$193K	\$186K	\$183K	\$175K	\$181K	\$216K	\$235K	\$248K
Avg Listing Price	\$235K	\$226K	\$242K	\$235K	\$218K	\$208K	\$196K	\$193K	\$191K	\$196K	\$232K	\$243K	\$257K
Avg Listing Price as a % of Avg Est Value	111%	110%	114%	113%	111%	108%	105%	106%	109%	108%	107%	103%	103%

Median Listing Price vs Median Est Value

The median listing price as a percentage of the median AVM or RVM® valuation estimate for active listings each month.

Filters Used

ZIP: Newport, VT 05855
 Property Type:
 Condo/Townhouse/Apt, Single
 Family Residence



Median Est Value	\$199K	\$187K	\$187K	\$181K	\$178K	\$175K	\$157K	\$164K	\$157K	\$163K	\$175K	\$207K	\$230K
Median Listing Price	\$213K	\$200K	\$200K	\$200K	\$187K	\$180K	\$174K	\$177K	\$165K	\$160K	\$189K	\$190K	\$227K
Med Listing Price as a % of Med Est Value	107%	107%	107%	110%	105%	103%	111%	108%	105%	98%	108%	92%	99%

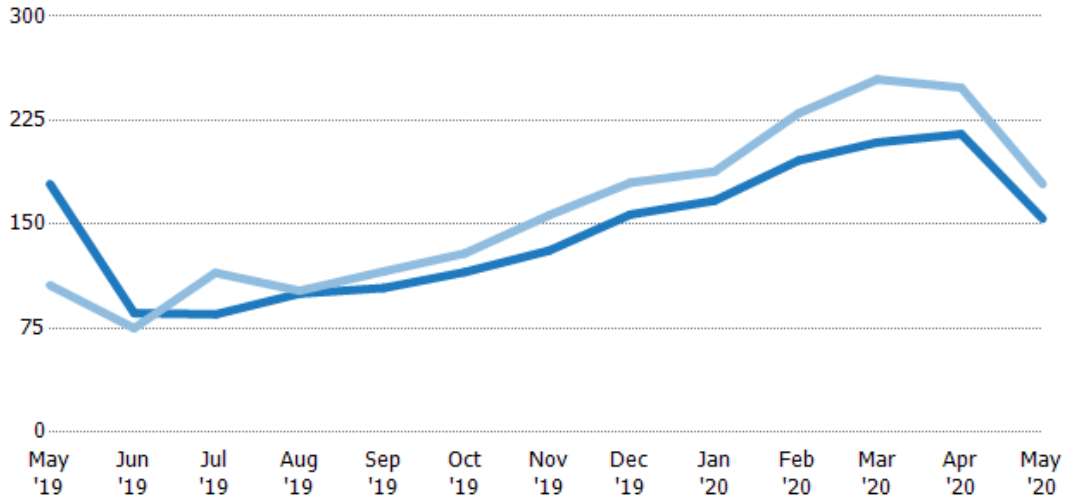
Median Days in RPR

The median number of days between when residential properties are first displayed as active listings in RPR and when accepted offers have been noted in RPR.

Filters Used

ZIP: Newport, VT 05855
 Property Type:
 Condo/Townhouse/Apt, Single
 Family Residence

Month/Year	Days	% Chg.
May '20	154	-14%
May '19	179	68.9%
May '18	106	-12.7%



	May '19	Jun '19	Jul '19	Aug '19	Sep '19	Oct '19	Nov '19	Dec '19	Jan '20	Feb '20	Mar '20	Apr '20	May '20
Current Year	179	86	85	100	104	116	131	157	167	196	209	215	154
Prior Year	106	75	115	102	116	129	157	180	188	230	255	249	179
Percent Change from Prior Year	69%	15%	-26%	-2%	-10%	-10%	-16%	-13%	-11%	-15%	-18%	-13%	-14%

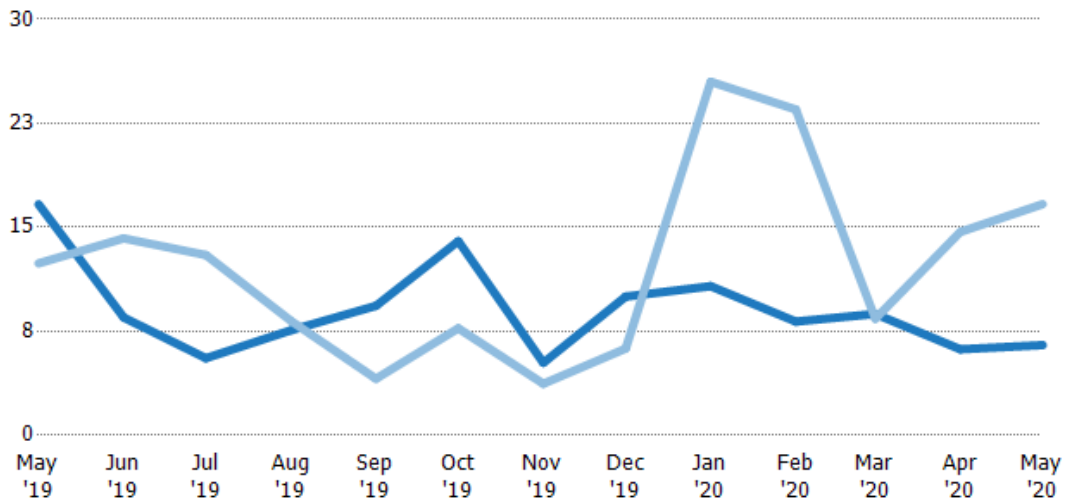
Months of Inventory

The number of months it would take to exhaust active listings at the current sales rate.

Filters Used

ZIP: Newport, VT 05855
 Property Type:
 Condo/Townhouse/Apt, Single
 Family Residence

Month/Year	Months	% Chg.
May '20	6.5	-61%
May '19	16.7	34.4%
May '18	12.4	125.8%



	May '19	Jun '19	Jul '19	Aug '19	Sep '19	Oct '19	Nov '19	Dec '19	Jan '20	Feb '20	Mar '20	Apr '20	May '20
Current Year	16.7	8.5	5.56	7.57	9.33	14	5.22	10	10.8	8.2	8.75	6.2	6.5
Prior Year	12.4	14.2	13	8.25	4.08	7.71	3.71	6.25	25.5	23.5	8.4	14.7	16.7
Percent Change from Prior Year	34%	-40%	-57%	-8%	129%	81%	41%	60%	-58%	-65%	4%	-58%	-61%

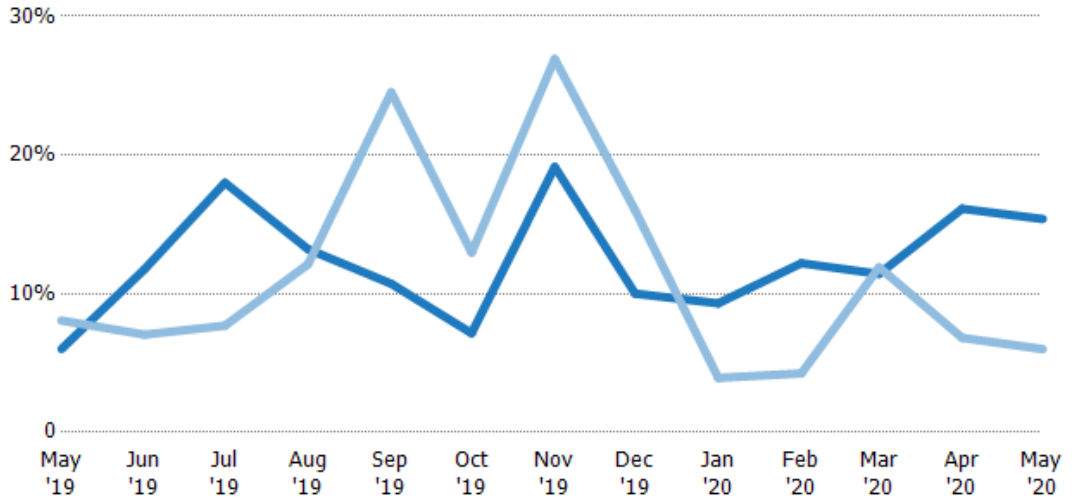
Absorption Rate

The percentage of inventory sold per month.

Filters Used

ZIP: Newport, VT 05855
 Property Type:
 Condo/Townhouse/Apt, Single
 Family Residence

Month/ Year	Rate	Chg.
May '20	15%	-9.4%
May '19	6%	2.1%
May '18	8%	-55.7%



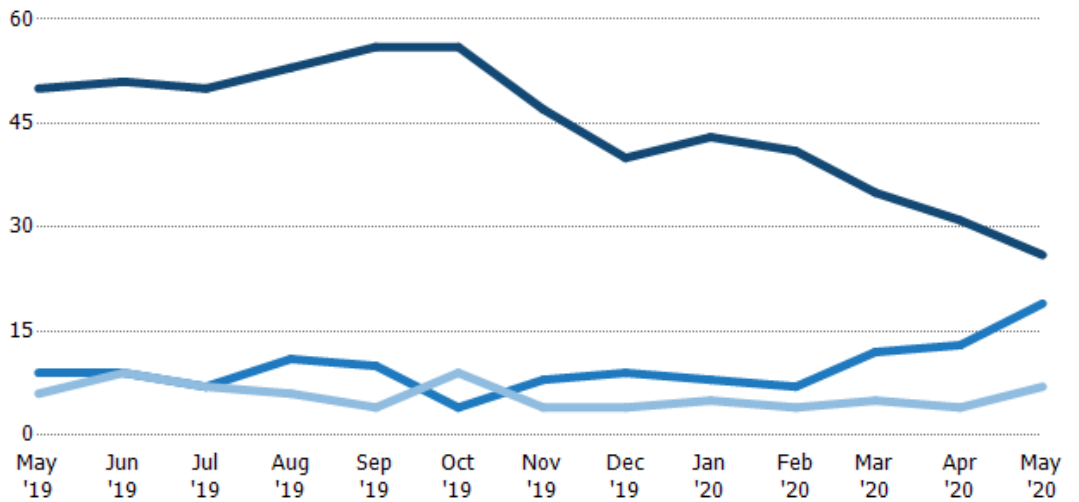
	May '19	Jun '19	Jul '19	Aug '19	Sep '19	Oct '19	Nov '19	Dec '19	Jan '20	Feb '20	Mar '20	Apr '20	May '20
Current Year	6%	12%	18%	13%	11%	7%	19%	10%	9%	12%	11%	16%	15%
Prior Year	8%	7%	8%	12%	25%	13%	27%	16%	4%	4%	12%	7%	6%
Change from Prior Year	2%	-5%	-10%	-1%	14%	6%	8%	6%	-5%	-8%	0%	-9%	-9%

Active/Pending/Sold Units

The number of residential properties that were Active, Pending and Sold each month.

Filters Used

ZIP: Newport, VT 05855
 Property Type:
 Condo/Townhouse/Apt, Single
 Family Residence



	May '19	Jun '19	Jul '19	Aug '19	Sep '19	Oct '19	Nov '19	Dec '19	Jan '20	Feb '20	Mar '20	Apr '20	May '20
Active	50	51	50	53	56	56	47	40	43	41	35	31	26
Pending	9	9	7	11	10	4	8	9	8	7	12	13	19
Sold	6	9	7	6	4	9	4	4	5	4	5	4	7

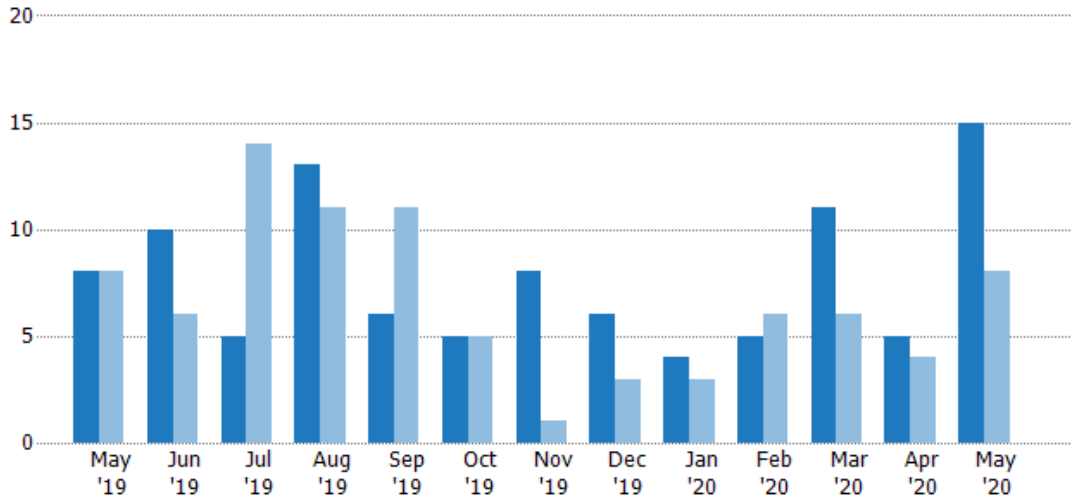
New Pending Sales

The number of residential properties with accepted offers that were added each month.

Filters Used

ZIP: Newport, VT 05855
 Property Type:
 Condo/Townhouse/Apt, Single
 Family Residence

Month/ Year	Count	% Chg.
May '20	15	87.5%
May '19	8	0%
May '18	8	0%



Current Year	8	10	5	13	6	5	8	6	4	5	11	5	15
Prior Year	8	6	14	11	11	5	1	3	3	6	6	4	8
Percent Change from Prior Year	0%	67%	-64%	18%	-45%	0%	700%	100%	33%	-17%	83%	25%	88%

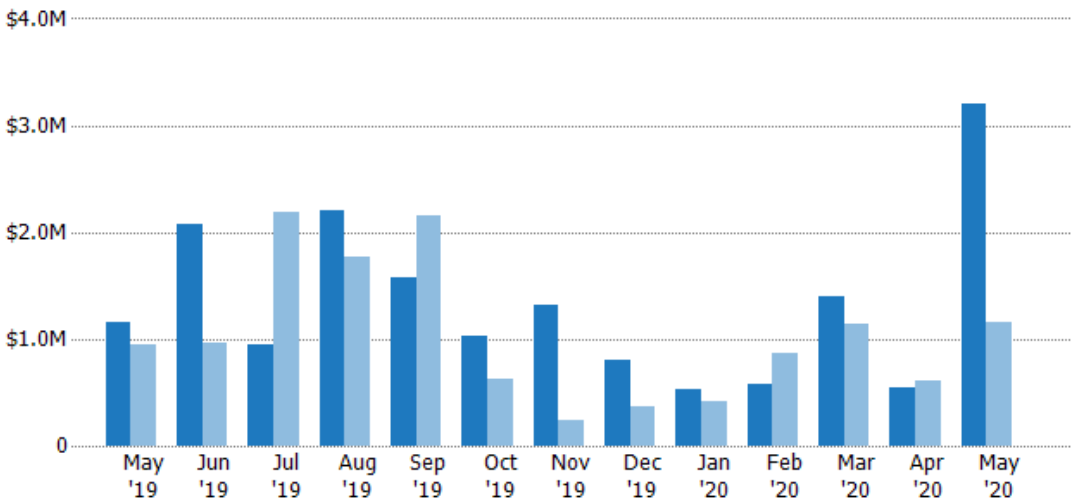
New Pending Sales Volume

The sum of the sales price of residential properties with accepted offers that were added each month.

Filters Used

ZIP: Newport, VT 05855
 Property Type:
 Condo/Townhouse/Apt, Single
 Family Residence

Month/ Year	Volume	% Chg.
May '20	\$3.2M	177.8%
May '19	\$1.15M	22.1%
May '18	\$942K	34.9%



Current Year	\$1.15M	\$2.08M	\$946K	\$2.2M	\$1.57M	\$1.02M	\$1.32M	\$804K	\$536K	\$578K	\$1.4M	\$552K	\$3.2M
Prior Year	\$942K	\$965K	\$2.18M	\$1.77M	\$2.15M	\$625K	\$235K	\$375K	\$418K	\$859K	\$1.14M	\$605K	\$1.15M
Percent Change from Prior Year	22%	116%	-57%	24%	-27%	64%	461%	114%	28%	-33%	23%	-9%	178%

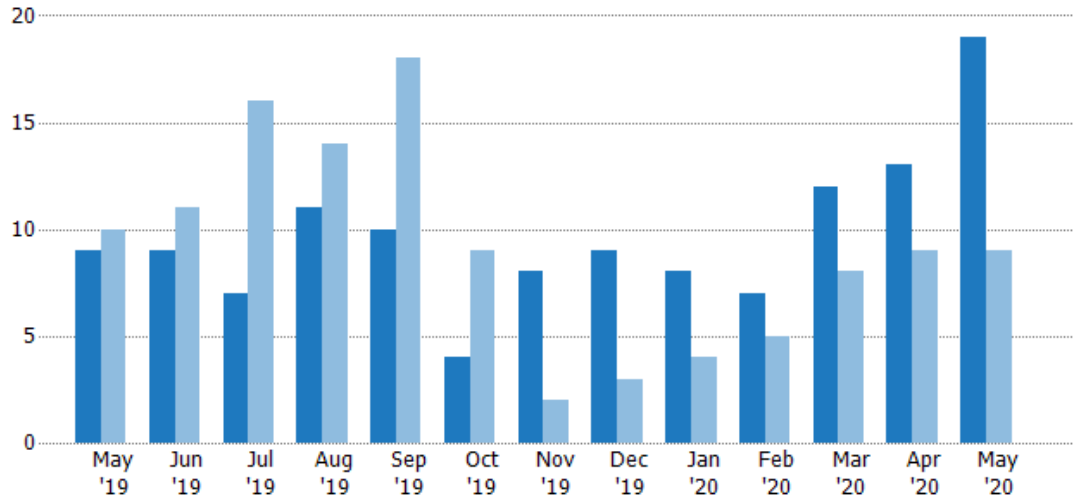
Pending Sales

The number of residential properties with accepted offers that were available at the end each month.

Filters Used

ZIP: Newport, VT 05855
 Property Type:
 Condo/Townhouse/Apt, Single
 Family Residence

Month/ Year	Count	% Chg.
May '20	19	111.1%
May '19	9	-10%
May '18	10	10%



Current Year	9	9	7	11	10	4	8	9	8	7	12	13	19
Prior Year	10	11	16	14	18	9	2	3	4	5	8	9	9
Percent Change from Prior Year	-10%	-18%	-56%	-21%	-44%	-56%	300%	200%	100%	40%	50%	44%	111%

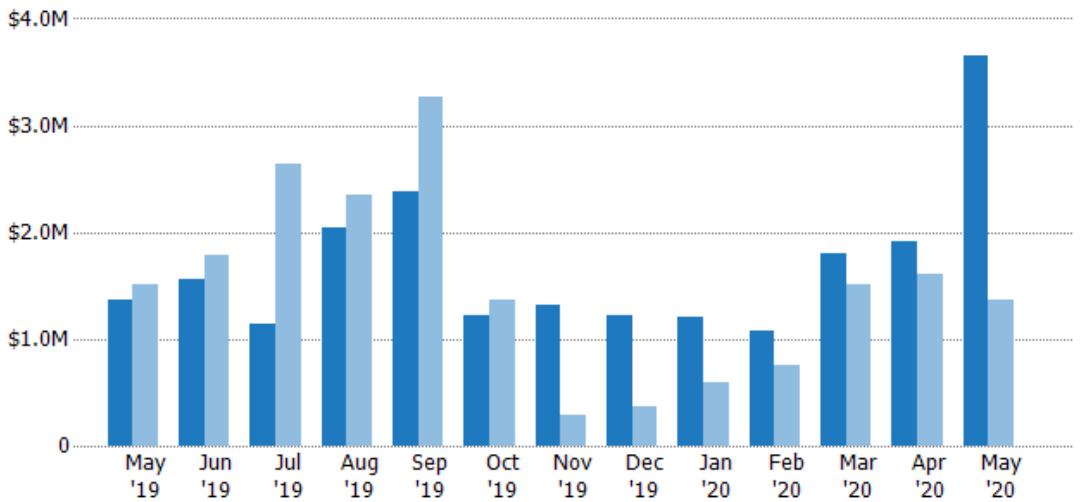
Pending Sales Volume

The sum of the sales price of residential properties with accepted offers that were available at the end of each month.

Filters Used

ZIP: Newport, VT 05855
 Property Type:
 Condo/Townhouse/Apt, Single
 Family Residence

Month/ Year	Volume	% Chg.
May '20	\$3.65M	168.6%
May '19	\$1.36M	-10.4%
May '18	\$1.52M	8.9%



Current Year	\$1.36M	\$1.56M	\$1.14M	\$2.05M	\$2.39M	\$1.22M	\$1.32M	\$1.21M	\$1.2M	\$1.07M	\$1.8M	\$1.91M	\$3.65M
Prior Year	\$1.52M	\$1.78M	\$2.64M	\$2.34M	\$3.27M	\$1.37M	\$282K	\$375K	\$597K	\$754K	\$1.51M	\$1.61M	\$1.36M
Percent Change from Prior Year	-10%	-12%	-57%	-12%	-27%	-11%	368%	223%	102%	42%	19%	19%	169%

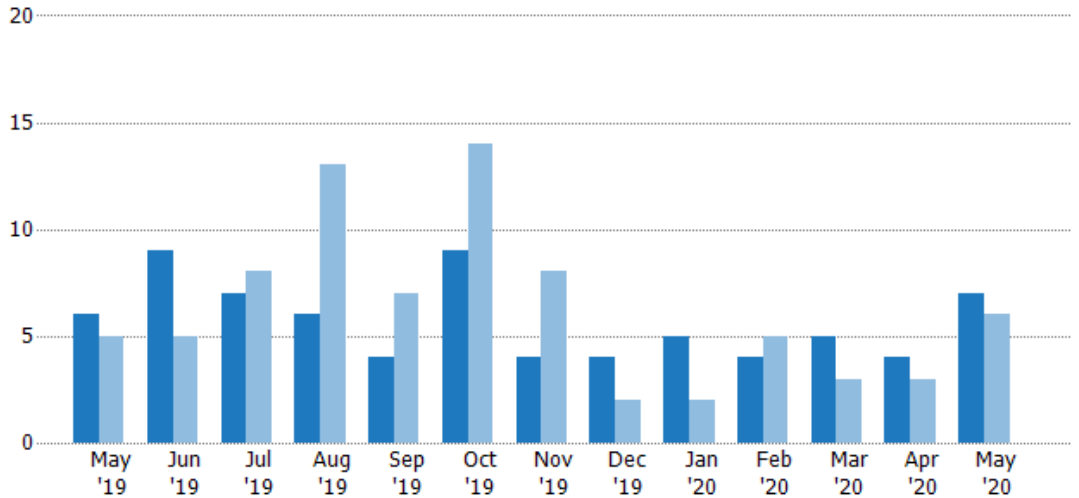
Closed Sales

The total number of residential properties sold each month.

Filters Used

ZIP: Newport, VT 05855
 Property Type:
 Condo/Townhouse/Apt, Single
 Family Residence

Month/ Year	Count	% Chg.
May '20	7	16.7%
May '19	6	20%
May '18	5	-40%



	May '19	Jun '19	Jul '19	Aug '19	Sep '19	Oct '19	Nov '19	Dec '19	Jan '20	Feb '20	Mar '20	Apr '20	May '20
Current Year	6	9	7	6	4	9	4	4	5	4	5	4	7
Prior Year	5	5	8	13	7	14	8	2	2	5	3	3	6
Percent Change from Prior Year	20%	80%	-13%	-54%	-43%	-36%	-50%	100%	150%	-20%	67%	33%	17%

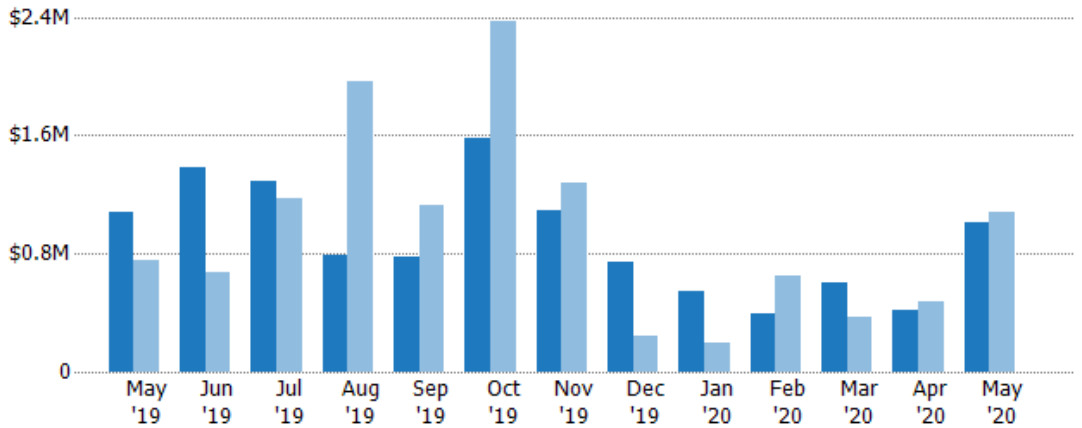
Closed Sales Volume

The sum of the sales price of residential properties sold each month.

Filters Used

ZIP: Newport, VT 05855
 Property Type:
 Condo/Townhouse/Apt, Single
 Family Residence

Month/ Year	Volume	% Chg.
May '20	\$1.02M	-5.9%
May '19	\$1.08M	43%
May '18	\$755K	-44.8%



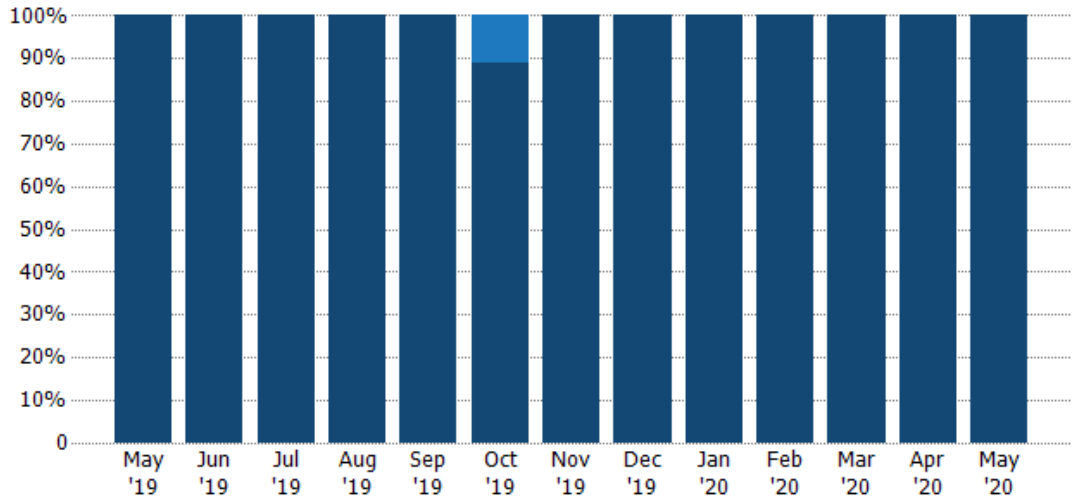
	May '19	Jun '19	Jul '19	Aug '19	Sep '19	Oct '19	Nov '19	Dec '19	Jan '20	Feb '20	Mar '20	Apr '20	May '20
Current Year	\$1.08M	\$1.38M	\$1.29M	\$794K	\$781K	\$1.57M	\$1.09M	\$745K	\$543K	\$390K	\$606K	\$412K	\$1.02M
Prior Year	\$755K	\$670K	\$1.17M	\$1.97M	\$1.12M	\$2.37M	\$1.28M	\$240K	\$191K	\$648K	\$369K	\$476K	\$1.08M
Percent Change from Prior Year	43%	106%	10%	-60%	-30%	-34%	-15%	210%	184%	-40%	64%	-13%	-6%

Closed Sales by Property Type

The percentage of residential properties sold each month by property type.

Filters Used

ZIP: Newport, VT 05855
 Property Type:
 Condo/Townhouse/Apt, Single
 Family Residence



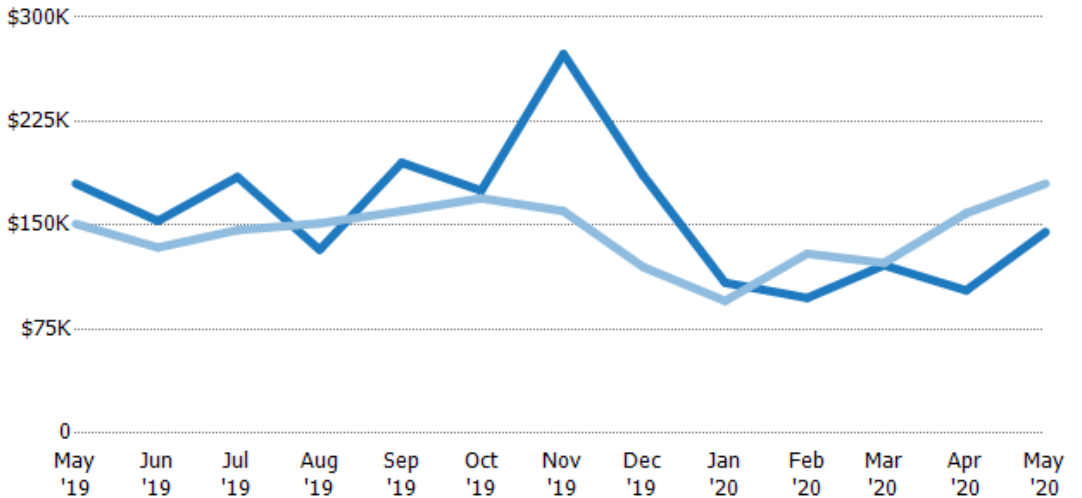
Condo/Townhouse	-	-	-	-	-	11%	-	-	-	-	-	-	-
Single Family Residence	100%	100%	100%	100%	100%	89%	100%	100%	100%	100%	100%	100%	100%

Average Sales Price

The average sales price of the residential properties sold each month.

Filters Used

ZIP: Newport, VT 05855
 Property Type:
 Condo/Townhouse/Apt, Single
 Family Residence



Current Year	\$180K	\$153K	\$185K	\$132K	\$195K	\$175K	\$274K	\$186K	\$109K	\$97.6K	\$121K	\$103K	\$145K
Prior Year	\$151K	\$134K	\$147K	\$151K	\$160K	\$169K	\$160K	\$120K	\$95.5K	\$130K	\$123K	\$159K	\$180K
Percent Change from Prior Year	19%	14%	26%	-13%	22%	3%	71%	55%	14%	-25%	-1%	-35%	-19%

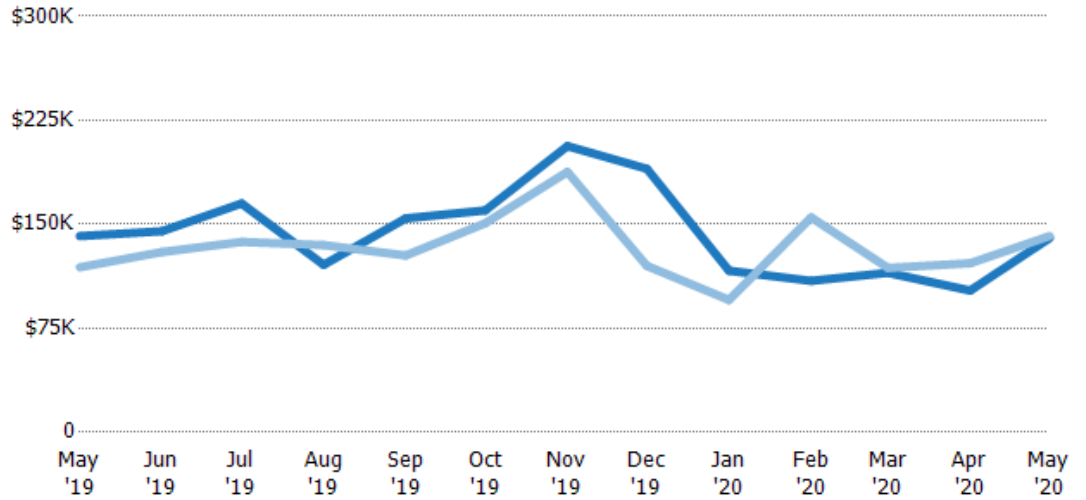
Median Sales Price

The median sales price of the residential properties sold each month.

Filters Used

ZIP: Newport, VT 05855
 Property Type:
 Condo/Townhouse/Apt, Single
 Family Residence

Month/Year	Price	% Chg.
May '20	\$140K	-1.1%
May '19	\$142K	18.9%
May '18	\$119K	21.4%



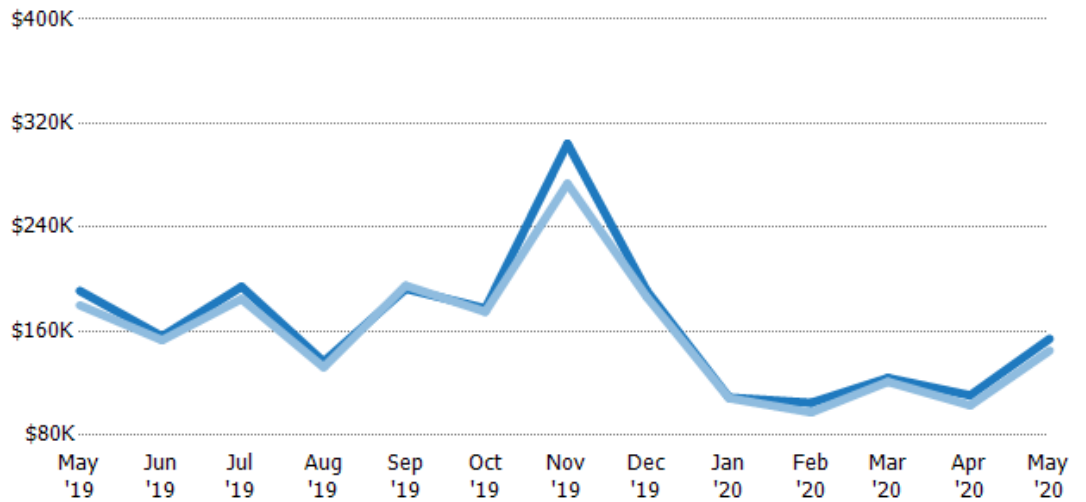
Current Year	\$142K	\$145K	\$165K	\$121K	\$154K	\$160K	\$206K	\$190K	\$117K	\$109K	\$115K	\$102K	\$140K
Prior Year	\$119K	\$130K	\$137K	\$135K	\$128K	\$151K	\$188K	\$120K	\$95.5K	\$155K	\$119K	\$122K	\$142K
Percent Change from Prior Year	19%	12%	20%	-11%	21%	6%	10%	58%	22%	-30%	-3%	-16%	-1%

Average Sales Price vs Average Listing Price

The average sales price as a percentage of the average listing price for properties sold each month.

Filters Used

ZIP: Newport, VT 05855
 Property Type:
 Condo/Townhouse/Apt, Single
 Family Residence



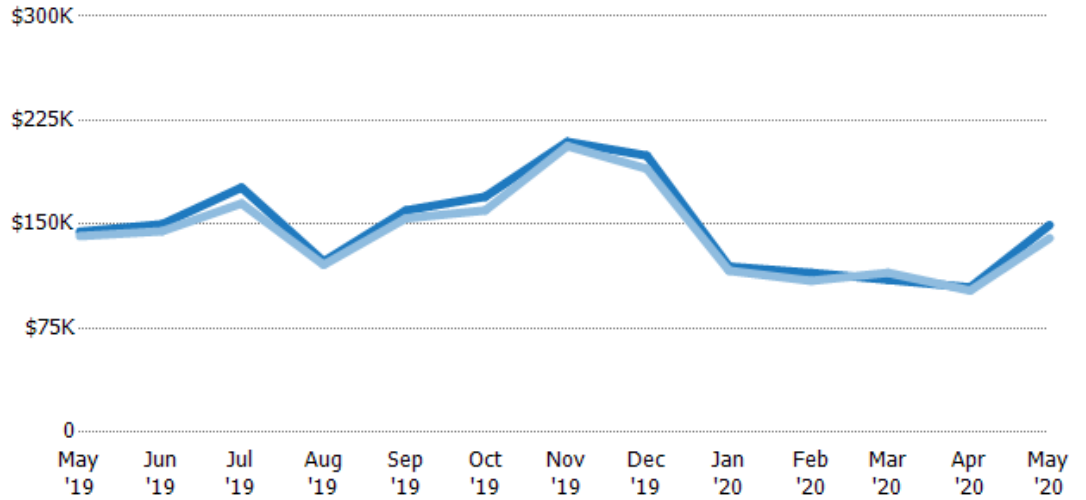
Avg List Price	\$191K	\$156K	\$194K	\$137K	\$193K	\$178K	\$304K	\$191K	\$109K	\$105K	\$124K	\$111K	\$154K
Avg Sales Price	\$180K	\$153K	\$185K	\$132K	\$195K	\$175K	\$274K	\$186K	\$109K	\$97.6K	\$121K	\$103K	\$145K
Avg Sales Price as a % of Avg List Price	94%	98%	95%	97%	101%	99%	90%	98%	100%	93%	98%	93%	94%

Median Sales Price vs Median Listing Price

The median sales price as a percentage of the median listing price for properties sold each month.

Filters Used

ZIP: Newport, VT 05855
 Property Type:
 Condo/Townhouse/Apt, Single
 Family Residence



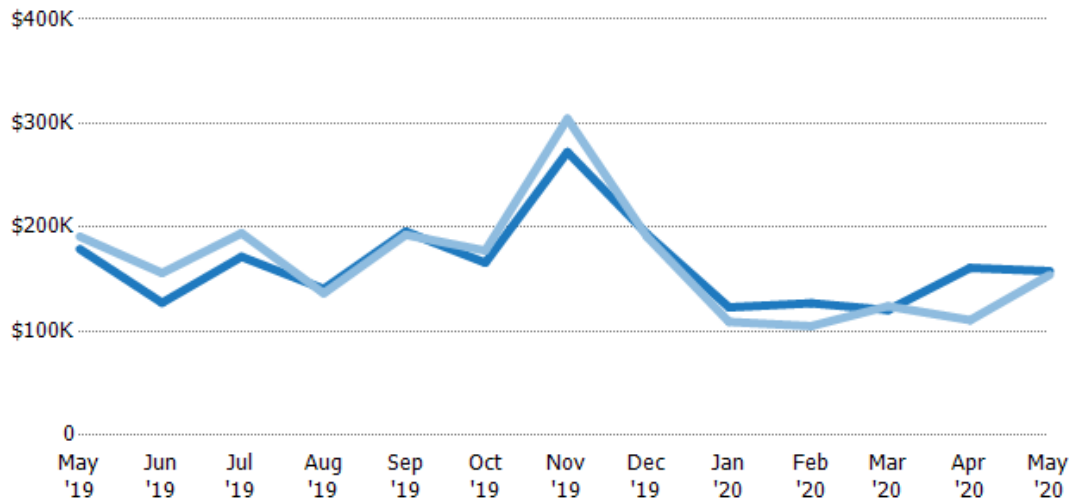
	May '19	Jun '19	Jul '19	Aug '19	Sep '19	Oct '19	Nov '19	Dec '19	Jan '20	Feb '20	Mar '20	Apr '20	May '20
Median List Price	\$145K	\$150K	\$177K	\$123K	\$160K	\$170K	\$209K	\$200K	\$120K	\$115K	\$110K	\$104K	\$150K
Median Sales Price	\$142K	\$145K	\$165K	\$121K	\$154K	\$160K	\$206K	\$190K	\$117K	\$109K	\$115K	\$102K	\$140K
Med Sales Price as a % of Med List Price	98%	97%	93%	98%	96%	94%	99%	95%	97%	95%	105%	98%	94%

Average Sales Price vs Average Est Value

The average sales price as a percentage of the average AVM or RVM® valuation estimate for properties sold each month.

Filters Used

ZIP: Newport, VT 05855
 Property Type:
 Condo/Townhouse/Apt, Single
 Family Residence



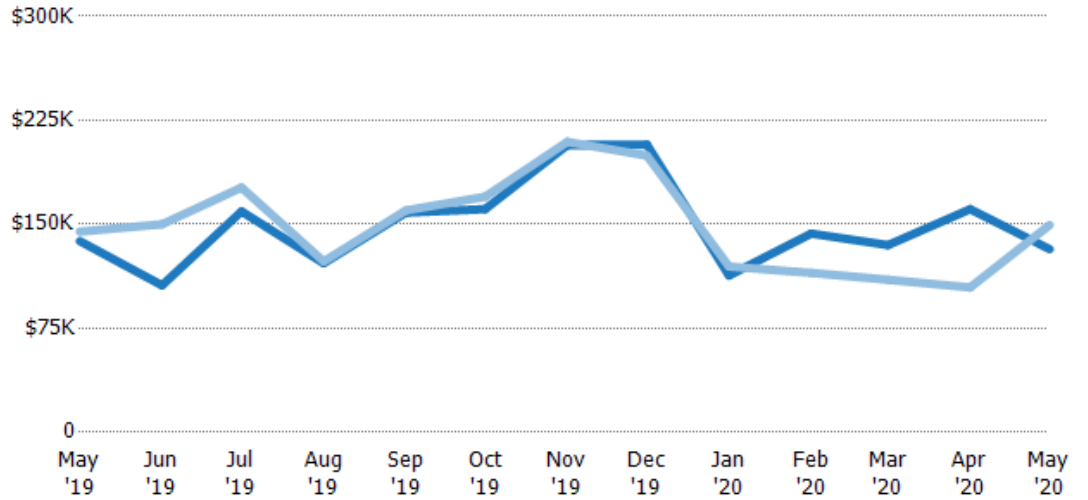
	May '19	Jun '19	Jul '19	Aug '19	Sep '19	Oct '19	Nov '19	Dec '19	Jan '20	Feb '20	Mar '20	Apr '20	May '20
Avg Est Value	\$179K	\$127K	\$172K	\$141K	\$196K	\$166K	\$272K	\$194K	\$123K	\$127K	\$120K	\$161K	\$158K
Avg Sales Price	\$191K	\$156K	\$194K	\$137K	\$193K	\$178K	\$304K	\$191K	\$109K	\$105K	\$124K	\$111K	\$154K
Avg Sales Price as a % of Avg Est Value	107%	123%	113%	97%	98%	107%	112%	99%	89%	83%	103%	69%	98%

Median Sales Price vs Median Est Value

The median sales price as a percent of the median AVM or RVM® valuation estimate for properties sold each month.

Filters Used

ZIP: Newport, VT 05855
 Property Type:
 Condo/Townhouse/Apt, Single
 Family Residence



	May '19	Jun '19	Jul '19	Aug '19	Sep '19	Oct '19	Nov '19	Dec '19	Jan '20	Feb '20	Mar '20	Apr '20	May '20
Median Est Value	\$138K	\$106K	\$159K	\$122K	\$158K	\$161K	\$207K	\$207K	\$113K	\$143K	\$135K	\$161K	\$132K
Median Sales Price	\$145K	\$150K	\$177K	\$123K	\$160K	\$170K	\$209K	\$200K	\$120K	\$115K	\$110K	\$104K	\$150K
Med Sales Price as a % of Med Est Value	105%	142%	111%	101%	101%	106%	101%	96%	106%	80%	81%	65%	113%