

Summary of Key Listing and Sales Metrics

A summary of the key metrics selected to be included in the report. MLS sources where licensed.

Key Metrics	May 2020	May 2019	+ / -	YTD 2020	YTD 2019	+ / -
Listing Activity Charts Metrics						
New Listing Count	34	46	-26.1%	115	144	-20.1%
New Listing Volume	\$13,761,200	\$13,342,698	+3.1%	\$39,665,400	\$44,044,497	-9.9%
Active Listing Count	182	255	-28.6%	N/A	N/A	
Active Listing Volume	\$73,333,792	\$98,239,197	-25.4%	N/A	N/A	
Average Listing Price	\$402,933	\$385,252	+4.6%	\$397,320	\$408,027	-2.6%
Median Listing Price	\$285,450	\$269,000	+6.1%	\$288,846	\$288,966	0%
Median Days in RPR	199	199	+/-	201.47	190.16	+5.9%
Months of Inventory	12.1	12.1	-0.1%	11.5	14.1	-18.2%
Absorption Rate	8.24%	8.24%	+0%	8.69%	7.11%	+1.6%
Sales Activity Charts Metrics						
New Pending Sales Count	19	20	-5%	92	104	-11.5%
New Pending Sales Volume	\$8,145,900	\$4,293,150	+89.7%	\$27,887,600	\$24,145,247	+15.5%
Pending Sales Count	24	25	-4%	N/A	N/A	
Pending Sales Volume	\$7,206,300	\$6,179,249	+16.6%	N/A	N/A	
Closed Sales Count	13	15	-13.3%	79	83	-4.8%
Closed Sales Volume	\$4,524,900	\$3,379,596	+33.9%	\$21,240,100	\$18,378,313	+15.6%
Average Sales Price	\$348,069	\$225,306	+54.5%	\$268,862	\$221,425	+21.4%
Median Sales Price	\$220,000	\$210,000	+4.8%	\$223,538	\$206,235	+8.4%

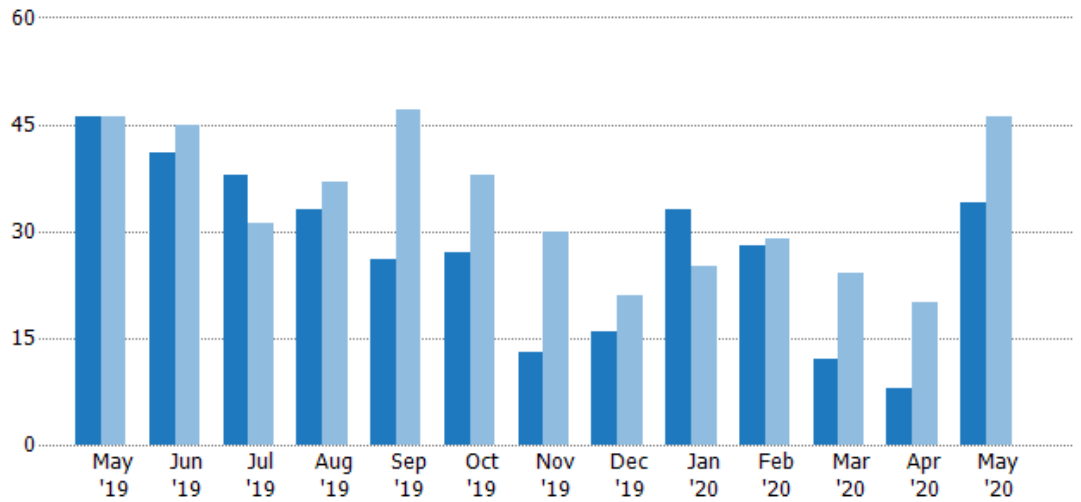
New Listings

The number of new residential listings that were added each month.

Filters Used

ZIP: East Dover, VT 05341, South Newfane, VT 05351, Wardsboro, VT 05355, West Dover, VT 05356, Wilmington, VT 05363
 Property Type: Condo/Townhouse/Apt, Single Family Residence

Month/Year	Count	% Chg.
May '20	34	-26.1%
May '19	46	0%
May '18	46	21.7%



Current Year	46	41	38	33	26	27	13	16	33	28	12	8	34
Prior Year	46	45	31	37	47	38	30	21	25	29	24	20	46
Percent Change from Prior Year	0%	-9%	23%	-11%	-45%	-29%	-57%	-24%	32%	-3%	-50%	-60%	-26%

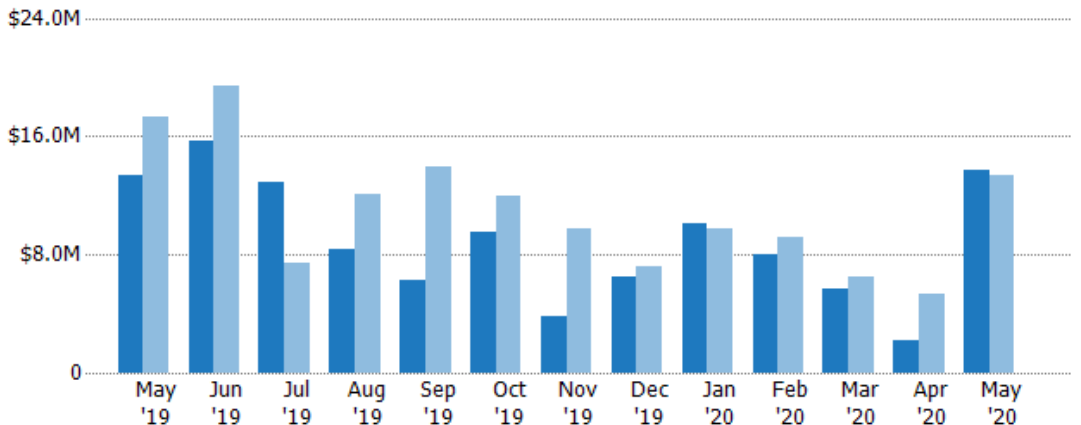
New Listing Volume

The sum of the listing price of residential listings that were added each month.

Filters Used

ZIP: East Dover, VT 05341, South Newfane, VT 05351, Wardsboro, VT 05355, West Dover, VT 05356, Wilmington, VT 05363
 Property Type: Condo/Townhouse/Apt, Single Family Residence

Month/Year	Volume	% Chg.
May '20	\$13.8M	3.1%
May '19	\$13.3M	-22.8%
May '18	\$17.3M	16.6%



Current Year	\$13.3M	\$15.7M	\$12.9M	\$8.31M	\$6.27M	\$9.49M	\$3.83M	\$6.52M	\$10.1M	\$7.97M	\$5.72M	\$2.16M	\$13.8M
Prior Year	\$17.3M	\$19.4M	\$7.38M	\$12M	\$13.9M	\$11.9M	\$9.7M	\$7.17M	\$9.73M	\$9.13M	\$6.47M	\$5.37M	\$13.3M
Percent Change from Prior Year	-23%	-19%	75%	-31%	-55%	-21%	-61%	-9%	3%	-13%	-12%	-60%	3%

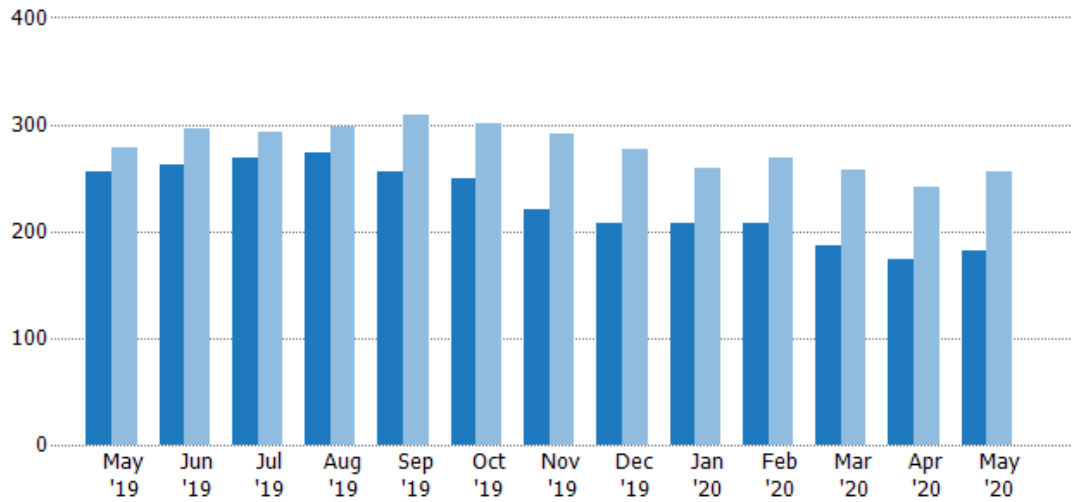
Active Listings

The number of active residential listings at the end of each month.

Filters Used

ZIP: East Dover, VT 05341, South Newfane, VT 05351, Wardsboro, VT 05355, West Dover, VT 05356, Wilmington, VT 05363

Property Type:
Condo/Townhouse/Apt, Single Family Residence



	May '19	Jun '19	Jul '19	Aug '19	Sep '19	Oct '19	Nov '19	Dec '19	Jan '20	Feb '20	Mar '20	Apr '20	May '20
Current Year	255	262	269	274	256	249	220	207	207	207	186	173	182
Prior Year	278	296	293	298	309	301	291	276	259	268	257	241	255
Percent Change from Prior Year	-8%	-11%	-8%	-8%	-17%	-17%	-24%	-25%	-20%	-23%	-28%	-28%	-29%

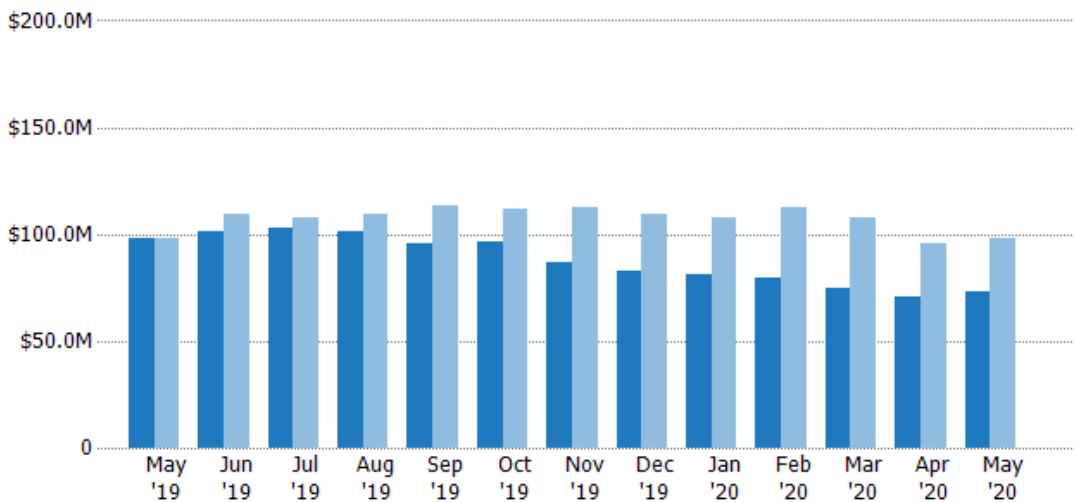
Active Listing Volume

The sum of the listing price of active residential listings at the end of each month.

Filters Used

ZIP: East Dover, VT 05341, South Newfane, VT 05351, Wardsboro, VT 05355, West Dover, VT 05356, Wilmington, VT 05363

Property Type:
Condo/Townhouse/Apt, Single Family Residence



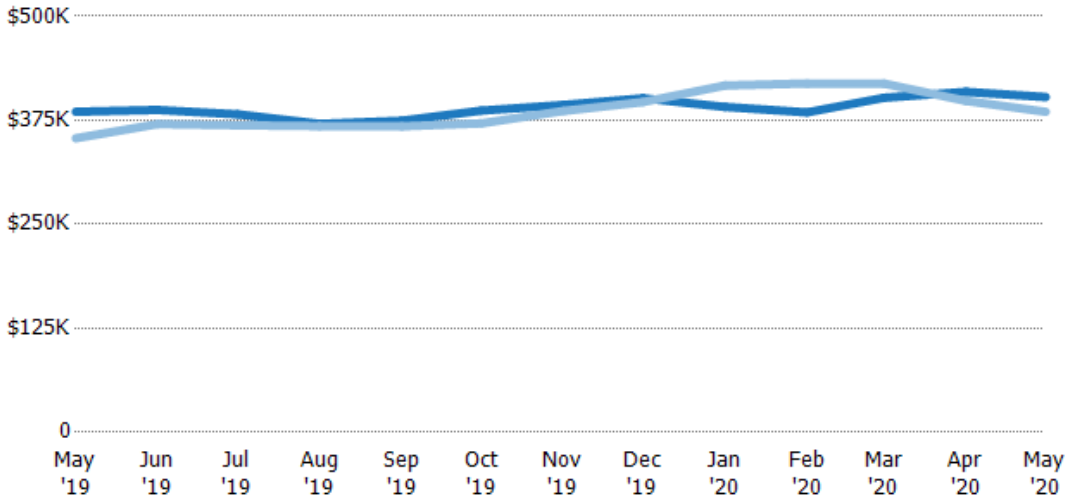
	May '19	Jun '19	Jul '19	Aug '19	Sep '19	Oct '19	Nov '19	Dec '19	Jan '20	Feb '20	Mar '20	Apr '20	May '20
Current Year	\$98.2M	\$102M	\$103M	\$102M	\$95.9M	\$96.3M	\$86.6M	\$83.1M	\$80.9M	\$79.6M	\$74.8M	\$70.8M	\$73.3M
Prior Year	\$98.3M	\$110M	\$108M	\$110M	\$114M	\$112M	\$112M	\$110M	\$108M	\$112M	\$108M	\$96M	\$98.2M
Percent Change from Prior Year	0%	-7%	-5%	-7%	-16%	-14%	-23%	-24%	-25%	-29%	-31%	-26%	-25%

Average Listing Price

The average listing price of active residential listings at the end of each month.

Filters Used

ZIP: East Dover, VT 05341, South Newfane, VT 05351, Wardsboro, VT 05355, West Dover, VT 05356, Wilmington, VT 05363
 Property Type: Condo/Townhouse/Apt, Single Family Residence



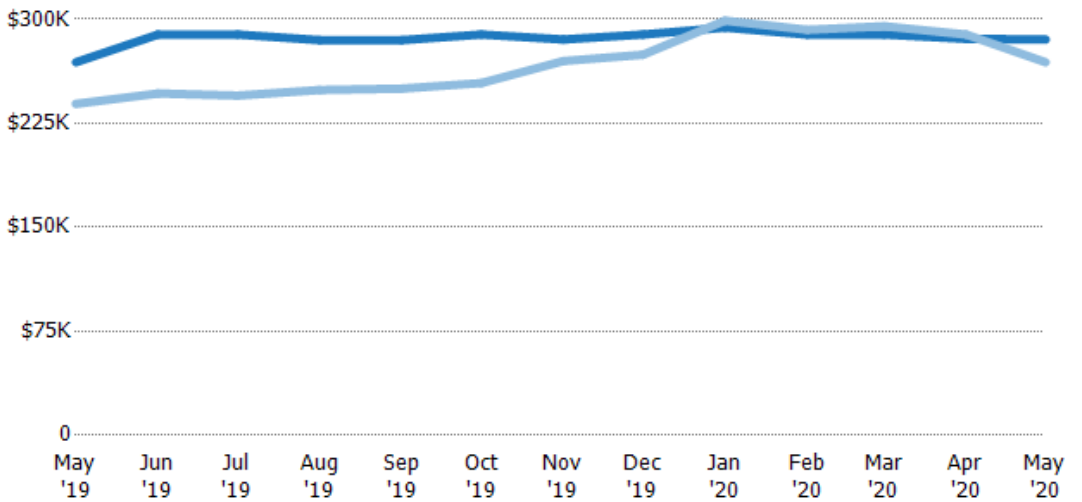
	May '19	Jun '19	Jul '19	Aug '19	Sep '19	Oct '19	Nov '19	Dec '19	Jan '20	Feb '20	Mar '20	Apr '20	May '20
Current Year	\$385K	\$387K	\$382K	\$371K	\$374K	\$387K	\$393K	\$401K	\$391K	\$384K	\$402K	\$409K	\$403K
Prior Year	\$353K	\$370K	\$369K	\$368K	\$368K	\$371K	\$386K	\$397K	\$417K	\$419K	\$419K	\$398K	\$385K
Percent Change from Prior Year	9%	5%	4%	1%	2%	4%	2%	1%	-6%	-8%	-4%	3%	5%

Median Listing Price

The median listing price of active residential listings at the end of each month.

Filters Used

ZIP: East Dover, VT 05341, South Newfane, VT 05351, Wardsboro, VT 05355, West Dover, VT 05356, Wilmington, VT 05363
 Property Type: Condo/Townhouse/Apt, Single Family Residence



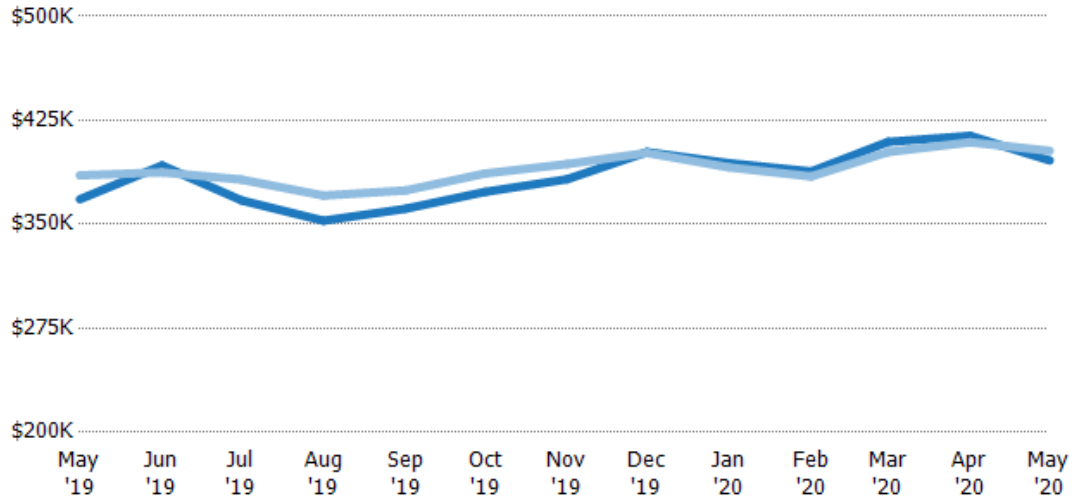
	May '19	Jun '19	Jul '19	Aug '19	Sep '19	Oct '19	Nov '19	Dec '19	Jan '20	Feb '20	Mar '20	Apr '20	May '20
Current Year	\$269K	\$289K	\$289K	\$285K	\$285K	\$289K	\$285K	\$289K	\$294K	\$289K	\$289K	\$286K	\$285K
Prior Year	\$239K	\$247K	\$245K	\$249K	\$250K	\$254K	\$270K	\$274K	\$299K	\$292K	\$295K	\$289K	\$269K
Percent Change from Prior Year	13%	17%	18%	14%	14%	14%	6%	5%	-2%	-1%	-2%	-1%	6%

Average Listing Price vs Average Est Value

The average listing price as a percentage of the average AVM or RVM® valuation estimate for active listings each month.

Filters Used

ZIP: East Dover, VT 05341, South Newfane, VT 05351, Wardsboro, VT 05355, West Dover, VT 05356, Wilmington, VT 05363
 Property Type: Condo/Townhouse/Apt, Single Family Residence



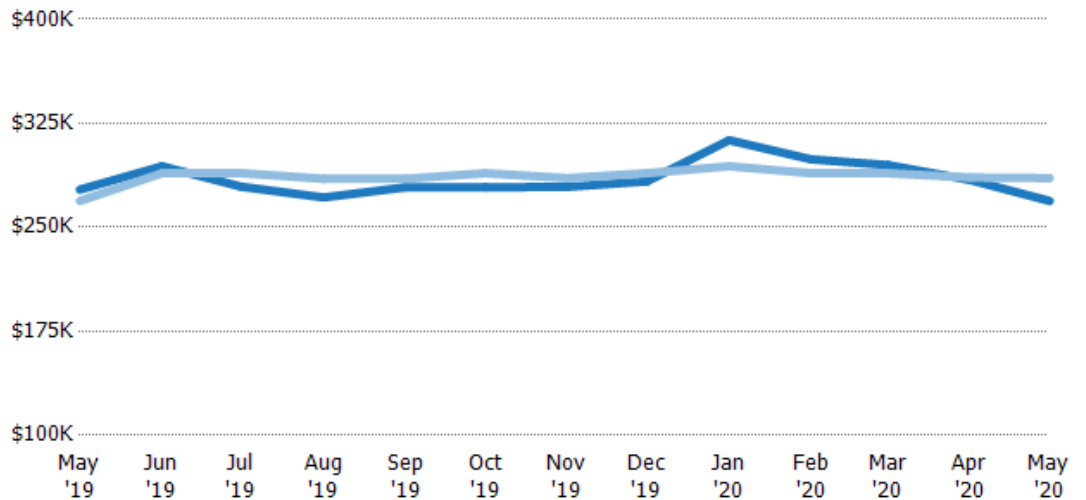
	May '19	Jun '19	Jul '19	Aug '19	Sep '19	Oct '19	Nov '19	Dec '19	Jan '20	Feb '20	Mar '20	Apr '20	May '20
Avg Est Value	\$368K	\$392K	\$367K	\$353K	\$361K	\$373K	\$383K	\$402K	\$394K	\$388K	\$409K	\$414K	\$396K
Avg Listing Price	\$385K	\$387K	\$382K	\$371K	\$374K	\$387K	\$393K	\$401K	\$391K	\$384K	\$402K	\$409K	\$403K
Avg Listing Price as a % of Avg Est Value	105%	99%	104%	105%	104%	104%	103%	100%	99%	99%	98%	99%	102%

Median Listing Price vs Median Est Value

The median listing price as a percentage of the median AVM or RVM® valuation estimate for active listings each month.

Filters Used

ZIP: East Dover, VT 05341, South Newfane, VT 05351, Wardsboro, VT 05355, West Dover, VT 05356, Wilmington, VT 05363
 Property Type: Condo/Townhouse/Apt, Single Family Residence



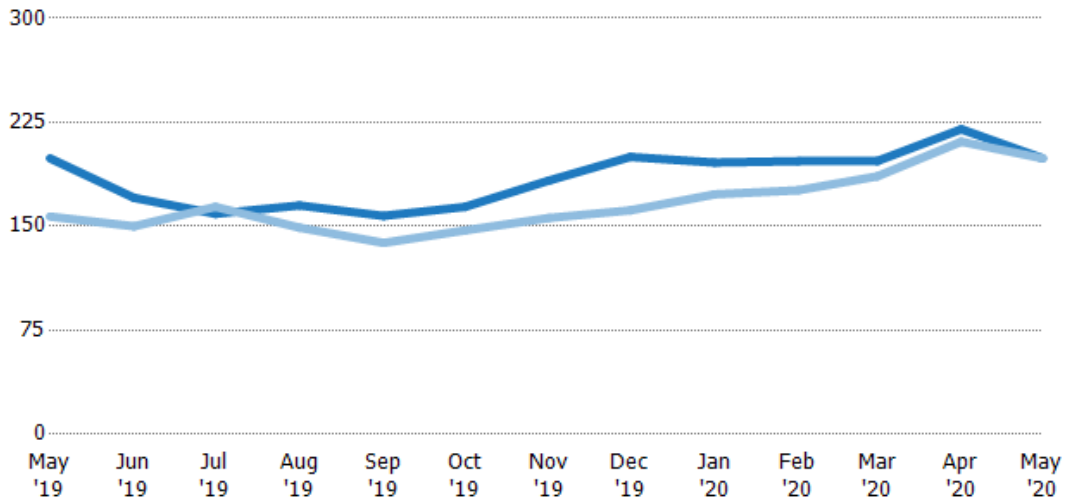
	May '19	Jun '19	Jul '19	Aug '19	Sep '19	Oct '19	Nov '19	Dec '19	Jan '20	Feb '20	Mar '20	Apr '20	May '20
Median Est Value	\$277K	\$294K	\$279K	\$272K	\$279K	\$279K	\$279K	\$283K	\$313K	\$299K	\$295K	\$284K	\$269K
Median Listing Price	\$269K	\$289K	\$289K	\$285K	\$285K	\$289K	\$285K	\$289K	\$294K	\$289K	\$289K	\$286K	\$285K
Med Listing Price as a % of Med Est Value	97%	98%	103%	105%	102%	104%	102%	102%	94%	97%	98%	101%	106%

Median Days in RPR

The median number of days between when residential properties are first displayed as active listings in RPR and when accepted offers have been noted in RPR.

Filters Used

ZIP: East Dover, VT 05341, South Newfane, VT 05351, Wardsboro, VT 05355, West Dover, VT 05356, Wilmington, VT 05363
 Property Type: Condo/Townhouse/Apt, Single Family Residence



Month/Year	Days	% Chg.
May '20	199	0%
May '19	199	26.8%
May '18	157	-10.2%

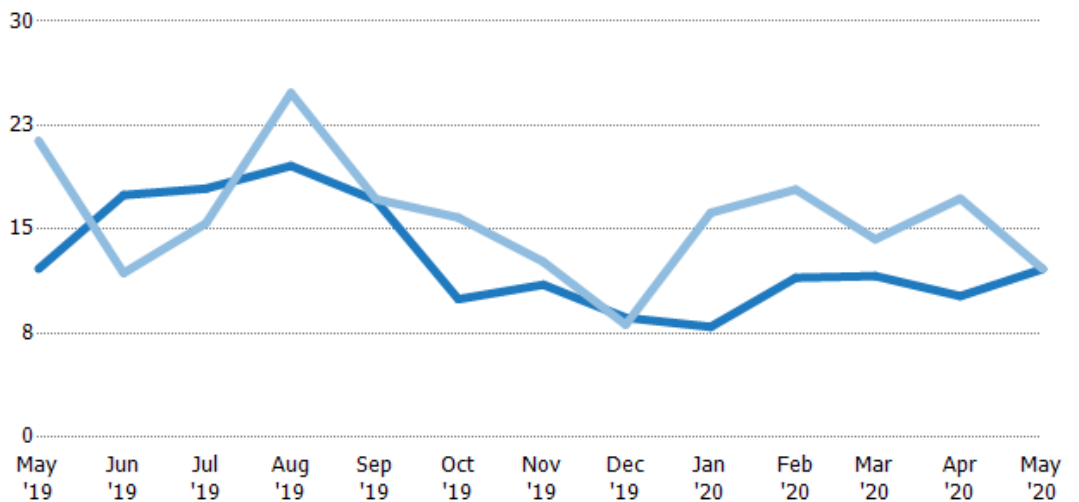
	May '19	Jun '19	Jul '19	Aug '19	Sep '19	Oct '19	Nov '19	Dec '19	Jan '20	Feb '20	Mar '20	Apr '20	May '20
Current Year	199	171	159	165	158	164	183	200	196	197	197	220	199
Prior Year	157	150	164	149	138	147	156	162	173	176	186	211	199
Percent Change from Prior Year	27%	14%	-3%	11%	14%	12%	17%	24%	13%	12%	6%	4%	0%

Months of Inventory

The number of months it would take to exhaust active listings at the current sales rate.

Filters Used

ZIP: East Dover, VT 05341, South Newfane, VT 05351, Wardsboro, VT 05355, West Dover, VT 05356, Wilmington, VT 05363
 Property Type: Condo/Townhouse/Apt, Single Family Residence



Month/Year	Months	% Chg.
May '20	12.1	-0.1%
May '19	12.1	-43.2%
May '18	21.4	-11.5%

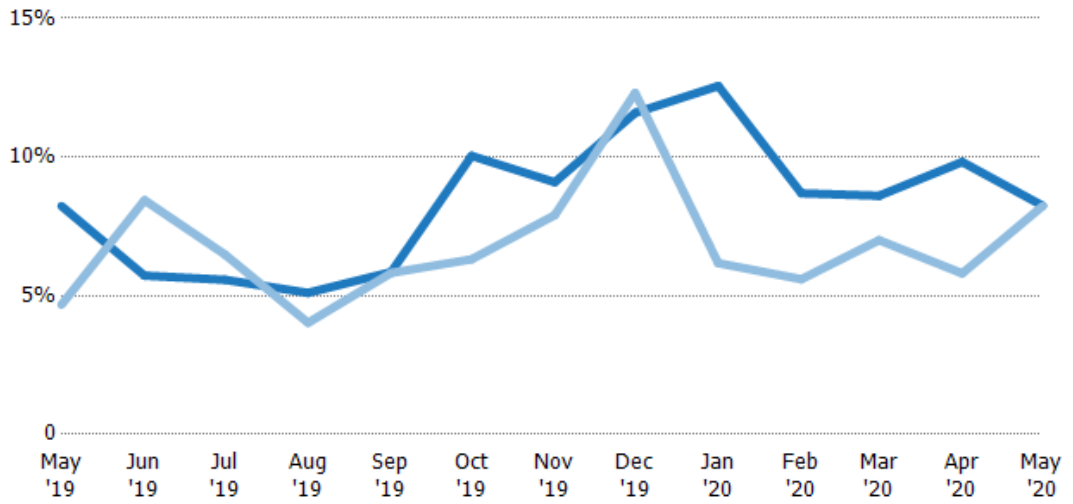
	May '19	Jun '19	Jul '19	Aug '19	Sep '19	Oct '19	Nov '19	Dec '19	Jan '20	Feb '20	Mar '20	Apr '20	May '20
Current Year	12.1	17.5	17.9	19.6	17.1	9.96	11	8.63	7.96	11.5	11.6	10.2	12.1
Prior Year	21.4	11.8	15.4	24.8	17.2	15.8	12.7	8.12	16.2	17.9	14.3	17.2	12.1
Percent Change from Prior Year	-43%	48%	16%	-21%	-1%	-37%	-13%	6%	-51%	-36%	-19%	-41%	0%

Absorption Rate

The percentage of inventory sold per month.

Filters Used

ZIP: East Dover, VT 05341, South Newfane, VT 05351, Wardsboro, VT 05355, West Dover, VT 05356, Wilmington, VT 05363
 Property Type: Condo/Townhouse/Apt, Single Family Residence



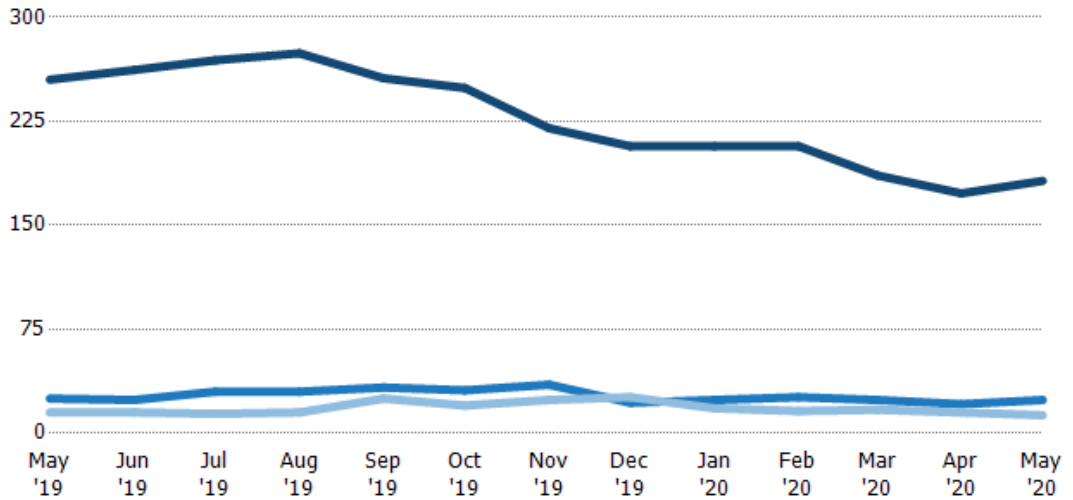
	May '19	Jun '19	Jul '19	Aug '19	Sep '19	Oct '19	Nov '19	Dec '19	Jan '20	Feb '20	Mar '20	Apr '20	May '20
Current Year	8%	6%	6%	5%	6%	10%	9%	12%	13%	9%	9%	10%	8%
Prior Year	5%	8%	6%	4%	6%	6%	8%	12%	6%	6%	7%	6%	8%
Change from Prior Year	-4%	3%	1%	-1%	0%	-4%	-1%	1%	-6%	-3%	-2%	-4%	0%

Active/Pending/Sold Units

The number of residential properties that were Active, Pending and Sold each month.

Filters Used

ZIP: East Dover, VT 05341, South Newfane, VT 05351, Wardsboro, VT 05355, West Dover, VT 05356, Wilmington, VT 05363
 Property Type: Condo/Townhouse/Apt, Single Family Residence



	May '19	Jun '19	Jul '19	Aug '19	Sep '19	Oct '19	Nov '19	Dec '19	Jan '20	Feb '20	Mar '20	Apr '20	May '20
Active	255	262	269	274	256	249	220	207	207	207	186	173	182
Pending	25	24	30	30	33	31	35	22	24	26	24	21	24
Sold	15	15	14	15	25	20	24	26	18	16	17	15	13

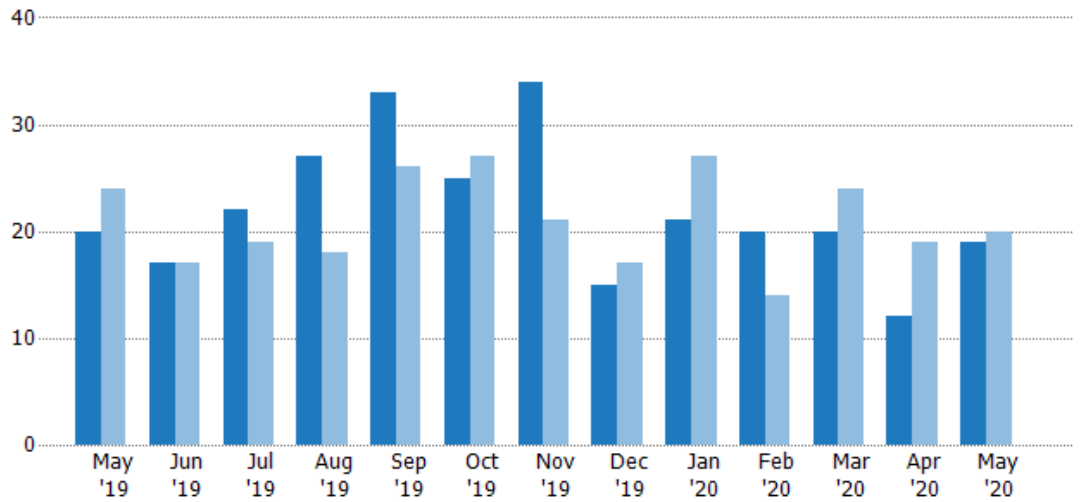
New Pending Sales

The number of residential properties with accepted offers that were added each month.

Filters Used

ZIP: East Dover, VT 05341, South Newfane, VT 05351, Wardsboro, VT 05355, West Dover, VT 05356, Wilmington, VT 05363
 Property Type: Condo/Townhouse/Apt, Single Family Residence

Month/Year	Count	% Chg.
May '20	19	-5%
May '19	20	-16.7%
May '18	24	-12.5%



Current Year	20	17	22	27	33	25	34	15	21	20	20	12	19
Prior Year	24	17	19	18	26	27	21	17	27	14	24	19	20
Percent Change from Prior Year	-17%	0%	16%	50%	27%	-7%	62%	-12%	-22%	43%	-17%	-37%	-5%

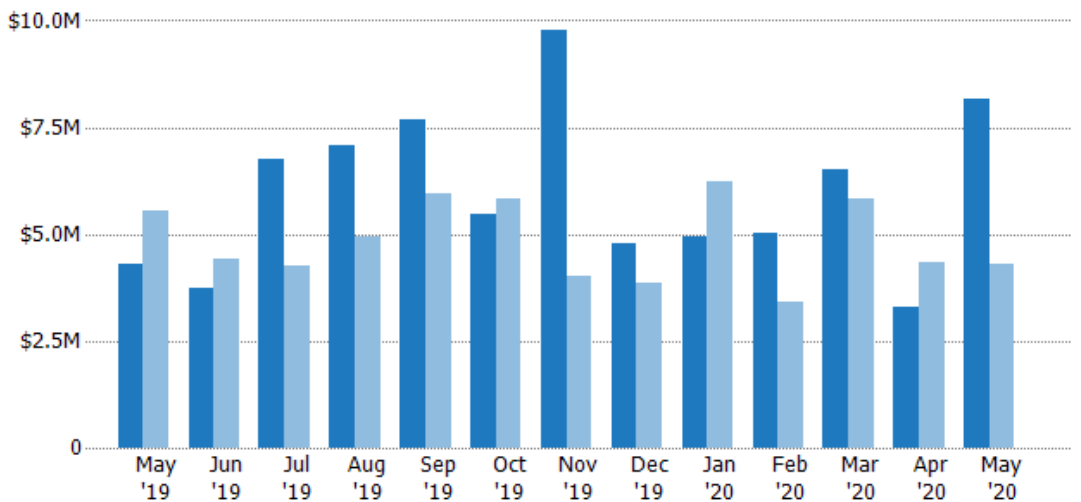
New Pending Sales Volume

The sum of the sales price of residential properties with accepted offers that were added each month.

Filters Used

ZIP: East Dover, VT 05341, South Newfane, VT 05351, Wardsboro, VT 05355, West Dover, VT 05356, Wilmington, VT 05363
 Property Type: Condo/Townhouse/Apt, Single Family Residence

Month/Year	Volume	% Chg.
May '20	\$8.15M	89.7%
May '19	\$4.29M	-22.8%
May '18	\$5.56M	36.6%



Current Year	\$4.29M	\$3.76M	\$6.77M	\$7.09M	\$7.68M	\$5.46M	\$9.76M	\$4.79M	\$4.94M	\$5.01M	\$6.5M	\$3.29M	\$8.15M
Prior Year	\$5.56M	\$4.42M	\$4.26M	\$4.94M	\$5.97M	\$5.82M	\$4.01M	\$3.88M	\$6.24M	\$3.43M	\$5.82M	\$4.35M	\$4.29M
Percent Change from Prior Year	-23%	-15%	59%	43%	29%	-6%	143%	23%	-21%	46%	12%	-24%	90%

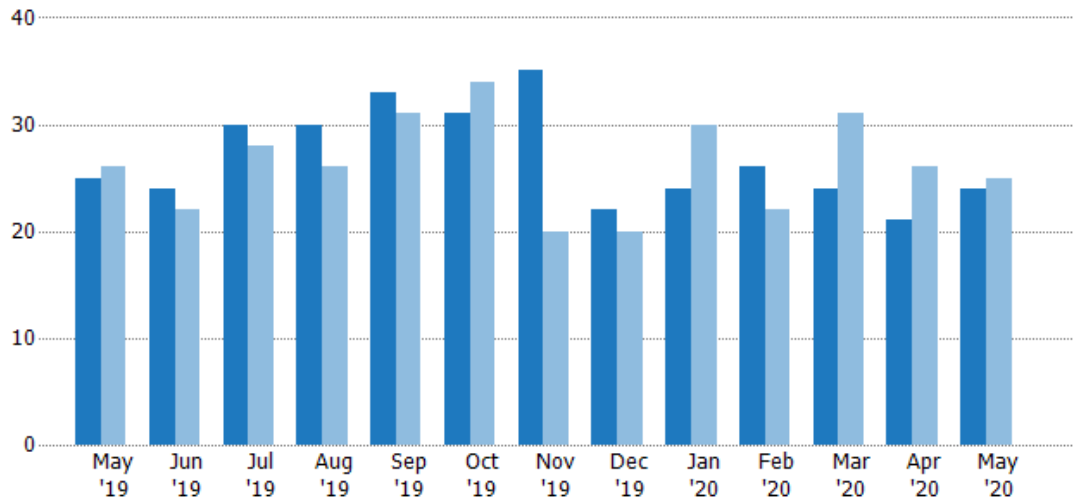
Pending Sales

The number of residential properties with accepted offers that were available at the end each month.

Filters Used

ZIP: East Dover, VT 05341, South Newfane, VT 05351, Wardsboro, VT 05355, West Dover, VT 05356, Wilmington, VT 05363
 Property Type: Condo/Townhouse/Apt, Single Family Residence

Month/Year	Count	% Chg.
May '20	24	-4%
May '19	25	-3.8%
May '18	26	11.5%



Current Year	25	24	30	30	33	31	35	22	24	26	24	21	24
Prior Year	26	22	28	26	31	34	20	20	30	22	31	26	25
Percent Change from Prior Year	-4%	9%	7%	15%	6%	-9%	75%	10%	-20%	18%	-23%	-19%	-4%

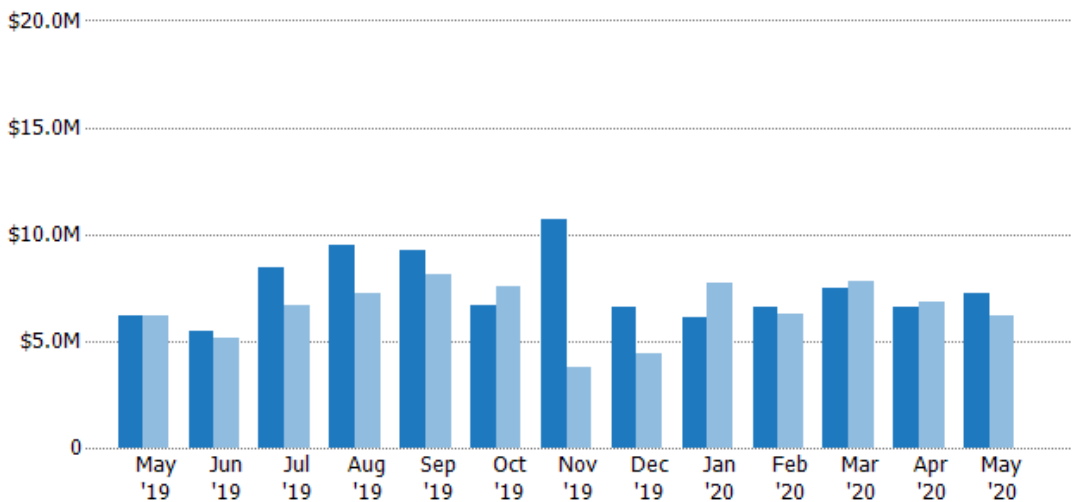
Pending Sales Volume

The sum of the sales price of residential properties with accepted offers that were available at the end of each month.

Filters Used

ZIP: East Dover, VT 05341, South Newfane, VT 05351, Wardsboro, VT 05355, West Dover, VT 05356, Wilmington, VT 05363
 Property Type: Condo/Townhouse/Apt, Single Family Residence

Month/Year	Volume	% Chg.
May '20	\$7.21M	16.6%
May '19	\$6.18M	-0.3%
May '18	\$6.2M	70.6%



Current Year	\$6.18M	\$5.45M	\$8.44M	\$9.48M	\$9.28M	\$6.66M	\$10.7M	\$6.59M	\$6.08M	\$6.56M	\$7.45M	\$6.58M	\$7.21M
Prior Year	\$6.2M	\$5.14M	\$6.63M	\$7.2M	\$8.12M	\$7.59M	\$3.75M	\$4.44M	\$7.72M	\$6.23M	\$7.77M	\$6.81M	\$6.18M
Percent Change from Prior Year	0%	6%	27%	32%	14%	-12%	185%	49%	-21%	5%	-4%	-3%	17%

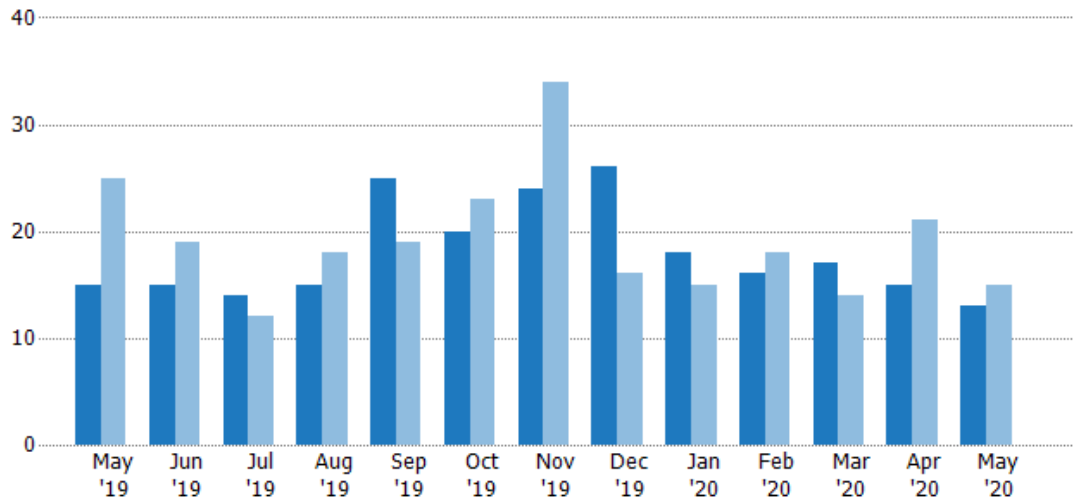
Closed Sales

The total number of residential properties sold each month.

Filters Used

ZIP: East Dover, VT 05341, South Newfane, VT 05351, Wardsboro, VT 05355, West Dover, VT 05356, Wilmington, VT 05363
 Property Type: Condo/Townhouse/Apt, Single Family Residence

Month/Year	Count	% Chg.
May '20	13	-13.3%
May '19	15	-40%
May '18	25	-36%



Current Year	15	15	14	15	25	20	24	26	18	16	17	15	13
Prior Year	25	19	12	18	19	23	34	16	15	18	14	21	15
Percent Change from Prior Year	-40%	-21%	17%	-17%	32%	-13%	-29%	63%	20%	-11%	21%	-29%	-13%

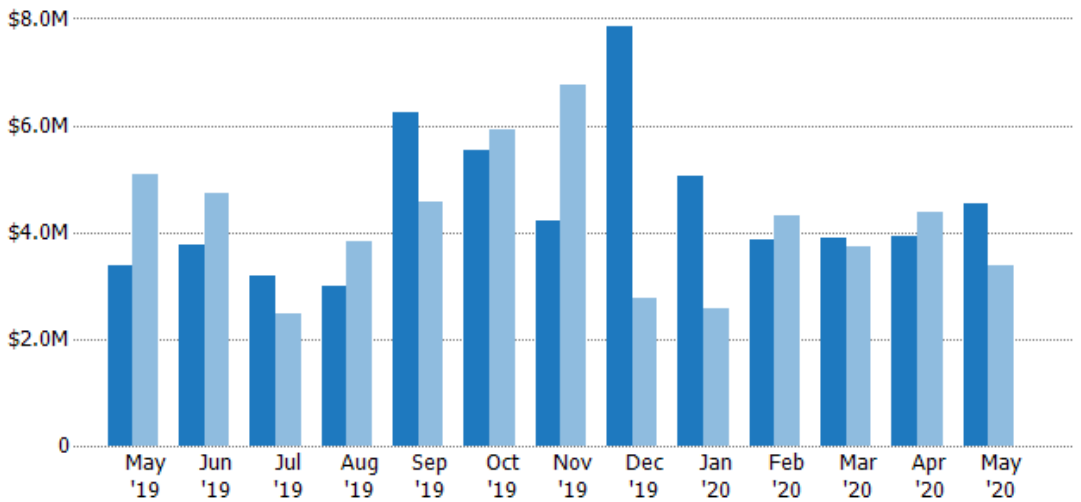
Closed Sales Volume

The sum of the sales price of residential properties sold each month.

Filters Used

ZIP: East Dover, VT 05341, South Newfane, VT 05351, Wardsboro, VT 05355, West Dover, VT 05356, Wilmington, VT 05363
 Property Type: Condo/Townhouse/Apt, Single Family Residence

Month/Year	Volume	% Chg.
May '20	\$4.52M	33.9%
May '19	\$3.38M	-33.4%
May '18	\$5.07M	7.3%



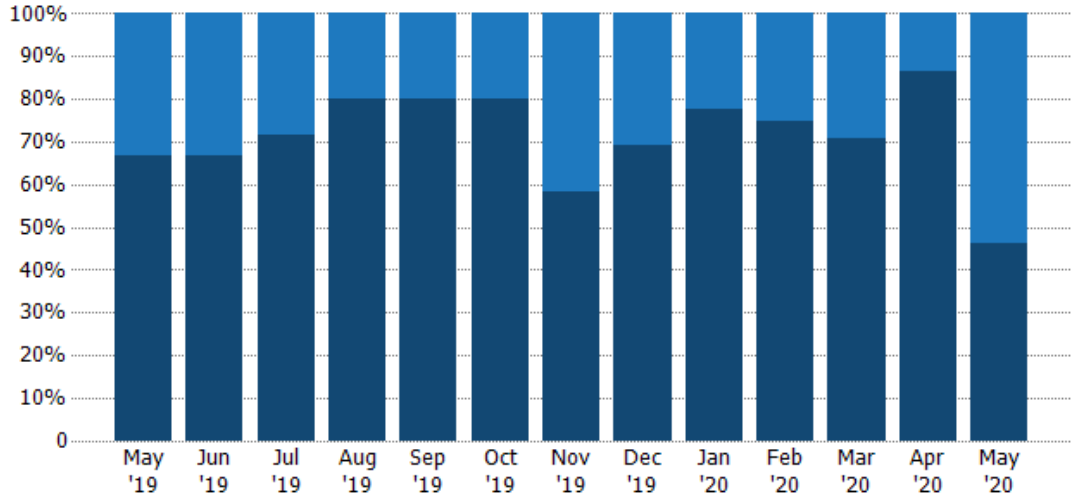
Current Year	\$3.38M	\$3.75M	\$3.19M	\$3M	\$6.23M	\$5.53M	\$4.22M	\$7.84M	\$5.04M	\$3.87M	\$3.88M	\$3.92M	\$4.52M
Prior Year	\$5.07M	\$4.72M	\$2.48M	\$3.84M	\$4.57M	\$5.91M	\$6.75M	\$2.77M	\$2.56M	\$4.33M	\$3.73M	\$4.38M	\$3.38M
Percent Change from Prior Year	-33%	-21%	29%	-22%	36%	-7%	-37%	183%	97%	-10%	4%	-10%	34%

Closed Sales by Property Type

The percentage of residential properties sold each month by property type.

Filters Used

ZIP: East Dover, VT 05341, South Newfane, VT 05351, Wardsboro, VT 05355, West Dover, VT 05356, Wilmington, VT 05363
 Property Type: Condo/Townhouse/Apt, Single Family Residence



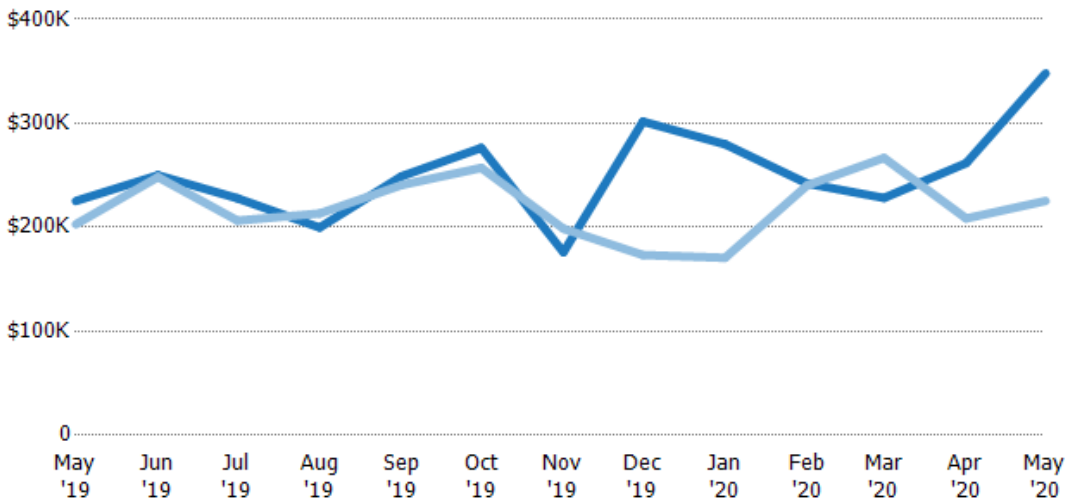
Condo/Townhouse	33%	33%	29%	20%	20%	20%	42%	31%	22%	25%	29%	13%	54%
Single Family Residence	67%	67%	71%	80%	80%	80%	58%	69%	78%	75%	71%	87%	46%

Average Sales Price

The average sales price of the residential properties sold each month.

Filters Used

ZIP: East Dover, VT 05341, South Newfane, VT 05351, Wardsboro, VT 05355, West Dover, VT 05356, Wilmington, VT 05363
 Property Type: Condo/Townhouse/Apt, Single Family Residence



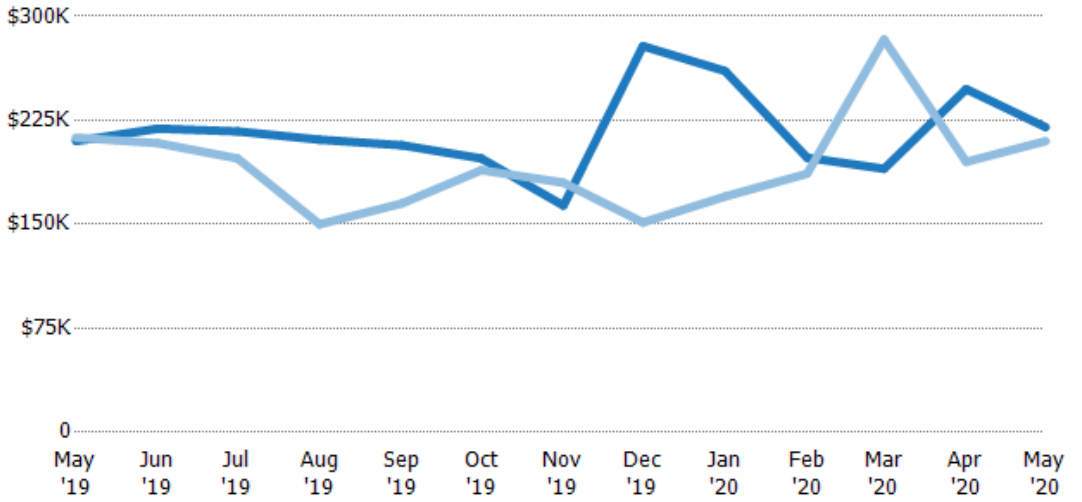
Current Year	\$225K	\$250K	\$228K	\$200K	\$249K	\$276K	\$176K	\$302K	\$280K	\$242K	\$228K	\$262K	\$348K
Prior Year	\$203K	\$248K	\$206K	\$213K	\$241K	\$257K	\$199K	\$173K	\$171K	\$240K	\$267K	\$209K	\$225K
Percent Change from Prior Year	11%	1%	10%	-6%	4%	7%	-11%	74%	64%	1%	-14%	25%	54%

Median Sales Price

The median sales price of the residential properties sold each month.

Filters Used

ZIP: East Dover, VT 05341, South Newfane, VT 05351, Wardsboro, VT 05355, West Dover, VT 05356, Wilmington, VT 05363
 Property Type: Condo/Townhouse/Apt, Single Family Residence



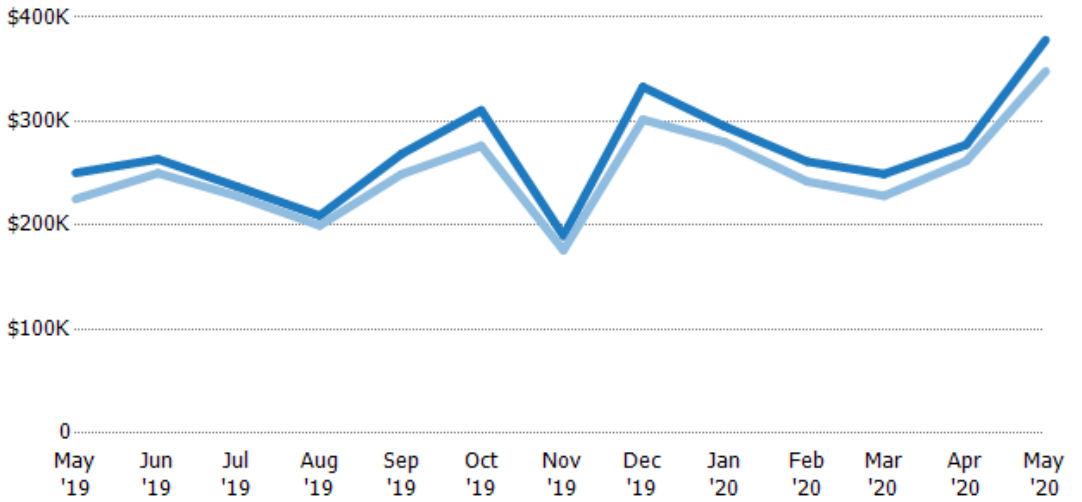
	May '19	Jun '19	Jul '19	Aug '19	Sep '19	Oct '19	Nov '19	Dec '19	Jan '20	Feb '20	Mar '20	Apr '20	May '20
Current Year	\$210K	\$219K	\$217K	\$211K	\$207K	\$198K	\$164K	\$279K	\$261K	\$198K	\$190K	\$248K	\$220K
Prior Year	\$213K	\$209K	\$198K	\$150K	\$165K	\$189K	\$180K	\$151K	\$170K	\$187K	\$283K	\$195K	\$210K
Percent Change from Prior Year	-1%	5%	10%	41%	25%	4%	-9%	84%	53%	6%	-33%	27%	5%

Average Sales Price vs Average Listing Price

The average sales price as a percentage of the average listing price for properties sold each month.

Filters Used

ZIP: East Dover, VT 05341, South Newfane, VT 05351, Wardsboro, VT 05355, West Dover, VT 05356, Wilmington, VT 05363
 Property Type: Condo/Townhouse/Apt, Single Family Residence



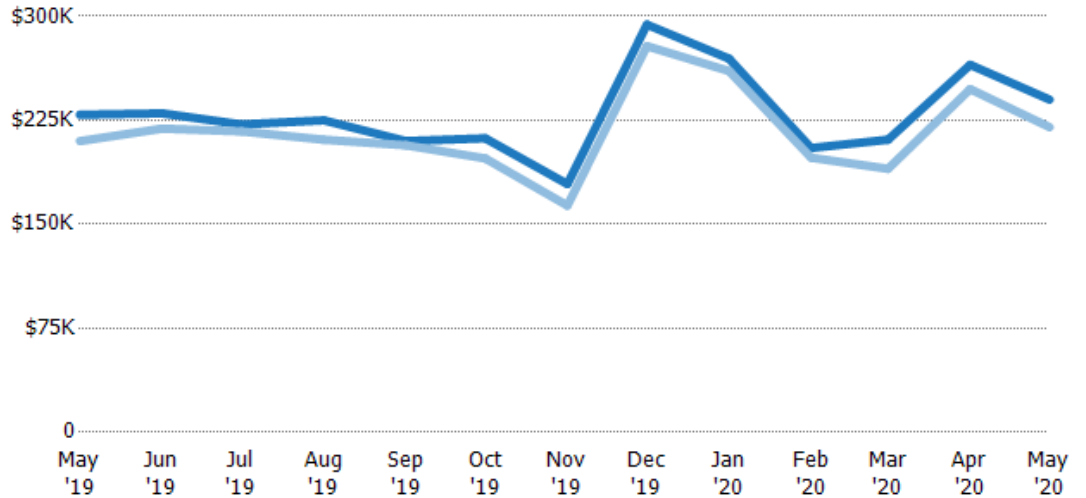
	May '19	Jun '19	Jul '19	Aug '19	Sep '19	Oct '19	Nov '19	Dec '19	Jan '20	Feb '20	Mar '20	Apr '20	May '20
Avg List Price	\$250K	\$263K	\$237K	\$209K	\$269K	\$311K	\$190K	\$333K	\$295K	\$261K	\$249K	\$277K	\$378K
Avg Sales Price	\$225K	\$250K	\$228K	\$200K	\$249K	\$276K	\$176K	\$302K	\$280K	\$242K	\$228K	\$262K	\$348K
Avg Sales Price as a % of Avg List Price	90%	95%	96%	95%	93%	89%	93%	91%	95%	93%	92%	94%	92%

Median Sales Price vs Median Listing Price

The median sales price as a percentage of the median listing price for properties sold each month.

Filters Used

ZIP: East Dover, VT 05341, South Newfane, VT 05351, Wardsboro, VT 05355, West Dover, VT 05356, Wilmington, VT 05363
 Property Type: Condo/Townhouse/Apt, Single Family Residence



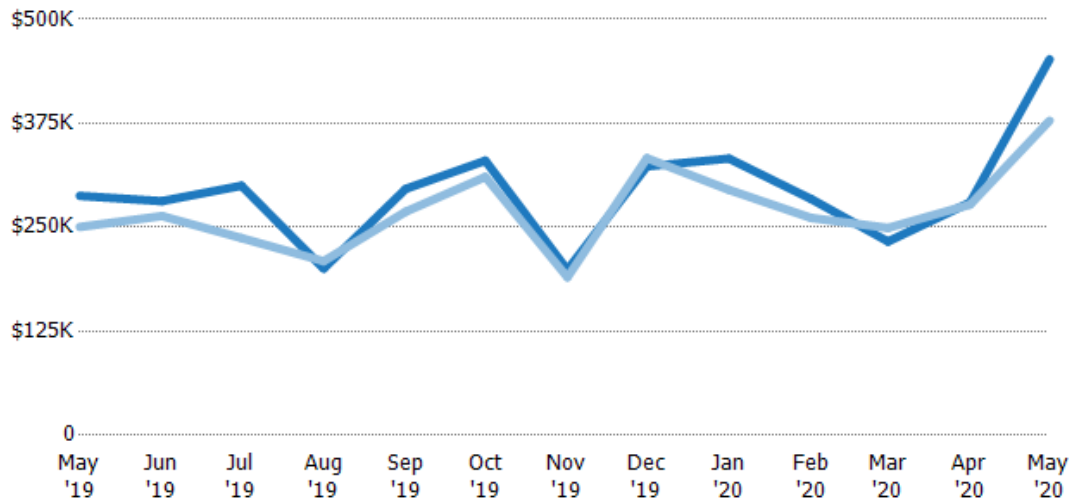
	May '19	Jun '19	Jul '19	Aug '19	Sep '19	Oct '19	Nov '19	Dec '19	Jan '20	Feb '20	Mar '20	Apr '20	May '20
Median List Price	\$229K	\$230K	\$222K	\$225K	\$210K	\$212K	\$179K	\$294K	\$269K	\$205K	\$211K	\$265K	\$240K
Median Sales Price	\$210K	\$219K	\$217K	\$211K	\$207K	\$198K	\$164K	\$279K	\$261K	\$198K	\$190K	\$248K	\$220K
Med Sales Price as a % of Med List Price	92%	95%	98%	94%	99%	93%	91%	95%	97%	97%	90%	93%	92%

Average Sales Price vs Average Est Value

The average sales price as a percentage of the average AVM or RVM® valuation estimate for properties sold each month.

Filters Used

ZIP: East Dover, VT 05341, South Newfane, VT 05351, Wardsboro, VT 05355, West Dover, VT 05356, Wilmington, VT 05363
 Property Type: Condo/Townhouse/Apt, Single Family Residence



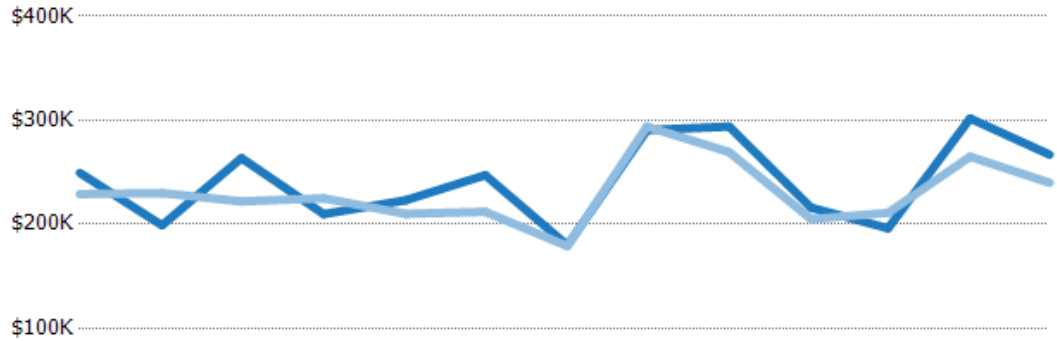
	May '19	Jun '19	Jul '19	Aug '19	Sep '19	Oct '19	Nov '19	Dec '19	Jan '20	Feb '20	Mar '20	Apr '20	May '20
Avg Est Value	\$288K	\$281K	\$300K	\$200K	\$296K	\$330K	\$199K	\$323K	\$333K	\$284K	\$233K	\$280K	\$452K
Avg Sales Price	\$250K	\$263K	\$237K	\$209K	\$269K	\$311K	\$190K	\$333K	\$295K	\$261K	\$249K	\$277K	\$378K
Avg Sales Price as a % of Avg Est Value	87%	94%	79%	104%	91%	94%	95%	103%	89%	92%	107%	99%	84%

Median Sales Price vs Median Est Value

The median sales price as a percent of the median AVM or RVM® valuation estimate for properties sold each month.

Filters Used

ZIP: East Dover, VT 05341, South Newfane, VT 05351, Wardsboro, VT 05355, West Dover, VT 05356, Wilmington, VT 05363
 Property Type: Condo/Townhouse/Apt, Single Family Residence



	May '19	Jun '19	Jul '19	Aug '19	Sep '19	Oct '19	Nov '19	Dec '19	Jan '20	Feb '20	Mar '20	Apr '20	May '20
Median Est Value	\$249K	\$199K	\$264K	\$210K	\$223K	\$247K	\$180K	\$291K	\$294K	\$216K	\$196K	\$302K	\$267K
Median Sales Price	\$229K	\$230K	\$222K	\$225K	\$210K	\$212K	\$179K	\$294K	\$269K	\$205K	\$211K	\$265K	\$240K
Med Sales Price as a % of Med Est Value	92%	116%	84%	107%	94%	86%	100%	101%	92%	95%	108%	88%	90%