

Summary of Key Listing and Sales Metrics

A summary of the key metrics selected to be included in the report. MLS sources where licensed.

Key Metrics	May 2020	May 2019	+ / -	YTD 2020	YTD 2019	+ / -
Listing Activity Charts Metrics						
New Listing Count	57	71	-19.7%	204	253	-19.4%
New Listing Volume	\$20,200,100	\$24,173,550	-16.4%	\$82,333,960	\$86,522,178	-4.8%
Active Listing Count	254	389	-34.7%	N/A	N/A	
Active Listing Volume	\$130,362,850	\$160,845,226	-19%	N/A	N/A	
Average Listing Price	\$513,240	\$413,484	+24.1%	\$480,517	\$420,916	+14.2%
Median Listing Price	\$339,450	\$289,000	+17.5%	\$324,176	\$291,463	+11.2%
Median Days in RPR	171.5	208	-17.5%	191.64	222.36	-13.8%
Months of Inventory	10.2	9.5	+7.1%	9.6	15.2	-36.8%
Absorption Rate	9.84%	10.54%	-0.7%	10.44%	6.6%	+3.8%
Sales Activity Charts Metrics						
New Pending Sales Count	51	61	-16.4%	202	226	-10.6%
New Pending Sales Volume	\$16,792,000	\$17,541,139	-4.3%	\$59,229,911	\$63,658,238	-7%
Pending Sales Count	77	71	+8.5%	N/A	N/A	
Pending Sales Volume	\$22,741,560	\$24,389,339	-6.8%	N/A	N/A	
Closed Sales Count	30	43	-30.2%	135	153	-11.8%
Closed Sales Volume	\$8,081,800	\$11,218,619	-28%	\$41,100,893	\$36,910,419	+11.4%
Average Sales Price	\$269,393	\$260,898	+3.3%	\$304,451	\$241,245	+26.2%
Median Sales Price	\$250,750	\$215,000	+16.6%	\$257,648	\$198,830	+29.6%

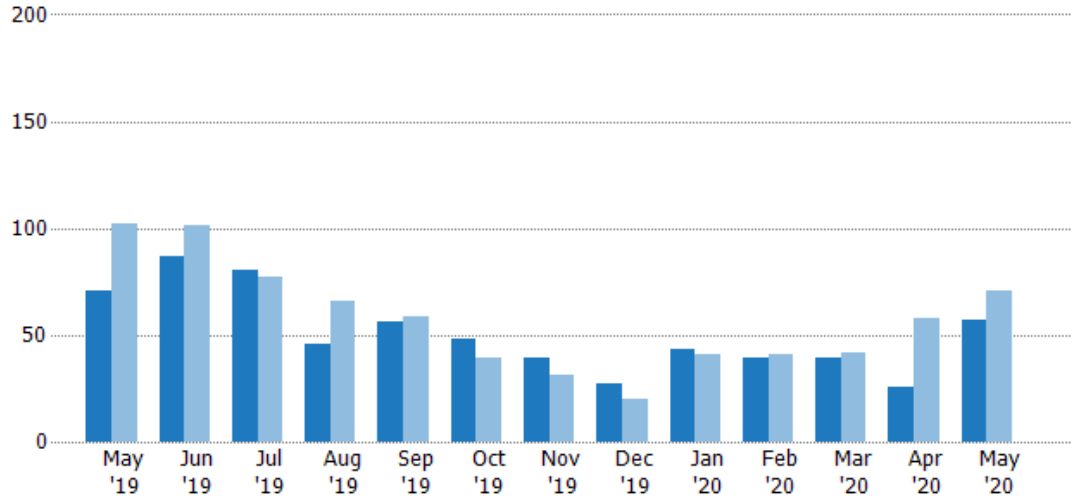
New Listings

The number of new residential listings that were added each month.

Filters Used

State: VT
 County: Bennington County, Vermont
 Property Type: Condo/Townhouse/Apt, Single Family Residence

Month/Year	Count	% Chg.
May '20	57	-19.7%
May '19	71	-30.4%
May '18	102	-19.6%



Current Year	71	87	80	46	56	48	39	27	43	39	39	26	57
Prior Year	102	101	77	66	59	39	31	20	41	41	42	58	71
Percent Change from Prior Year	-30%	-14%	4%	-30%	-5%	23%	26%	35%	5%	-5%	-7%	-55%	-20%

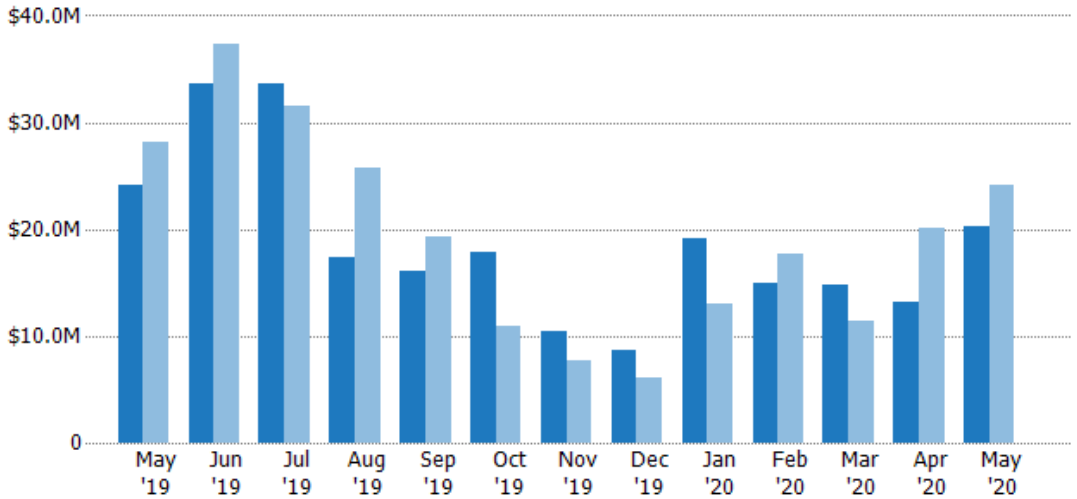
New Listing Volume

The sum of the listing price of residential listings that were added each month.

Filters Used

State: VT
 County: Bennington County, Vermont
 Property Type: Condo/Townhouse/Apt, Single Family Residence

Month/Year	Volume	% Chg.
May '20	\$20.2M	-16.4%
May '19	\$24.2M	-14.3%
May '18	\$28.2M	-16.6%



Current Year	\$24.2M	\$33.6M	\$33.6M	\$17.4M	\$16.1M	\$17.8M	\$10.4M	\$8.69M	\$19.1M	\$15M	\$14.8M	\$13.2M	\$20.2M
Prior Year	\$28.2M	\$37.3M	\$31.6M	\$25.8M	\$19.3M	\$11M	\$7.66M	\$6.02M	\$13.1M	\$17.7M	\$11.4M	\$20.1M	\$24.2M
Percent Change from Prior Year	-14%	-10%	6%	-33%	-17%	62%	35%	44%	46%	-15%	30%	-34%	-16%

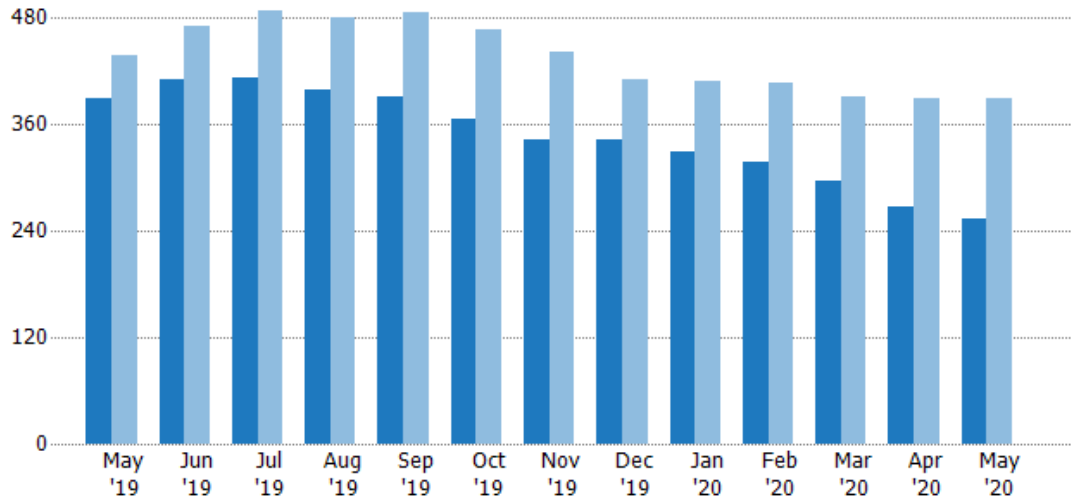
Active Listings

The number of active residential listings at the end of each month.

Filters Used

State: VT
 County: Bennington County, Vermont
 Property Type: Condo/Townhouse/Apt, Single Family Residence

Month/Year	Count	% Chg.
May '20	254	-34.7%
May '19	389	-11.2%
May '18	438	-6.8%



Current Year	389	411	412	399	392	366	343	342	330	317	297	268	254
Prior Year	438	470	489	481	487	468	442	410	408	407	391	390	389
Percent Change from Prior Year	-11%	-13%	-16%	-17%	-20%	-22%	-22%	-17%	-19%	-22%	-24%	-31%	-35%

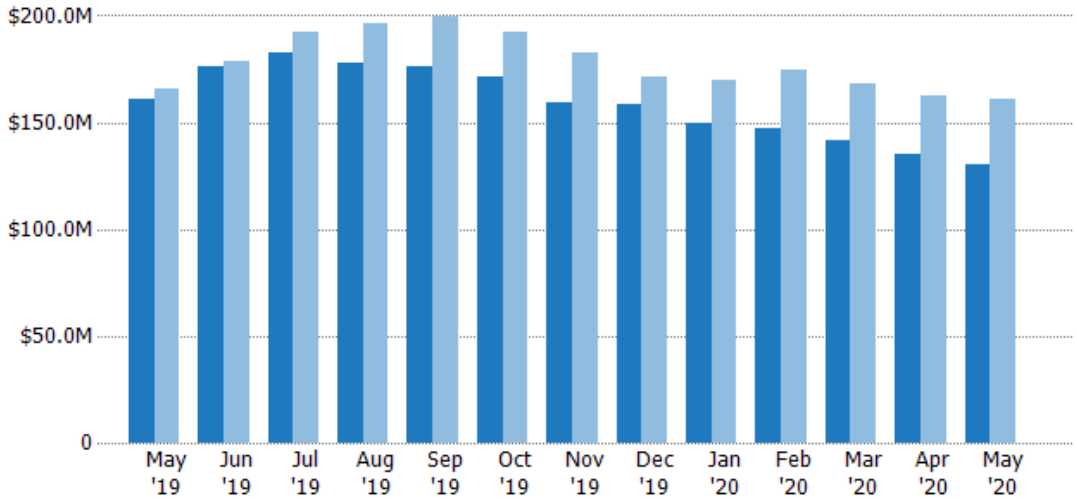
Active Listing Volume

The sum of the listing price of active residential listings at the end of each month.

Filters Used

State: VT
 County: Bennington County, Vermont
 Property Type: Condo/Townhouse/Apt, Single Family Residence

Month/Year	Volume	% Chg.
May '20	\$130M	-19%
May '19	\$161M	-2.9%
May '18	\$166M	-3.9%



Current Year	\$161M	\$176M	\$183M	\$178M	\$176M	\$171M	\$159M	\$158M	\$150M	\$147M	\$142M	\$135M	\$130M
Prior Year	\$166M	\$179M	\$192M	\$196M	\$200M	\$192M	\$183M	\$171M	\$169M	\$174M	\$168M	\$163M	\$161M
Percent Change from Prior Year	-3%	-1%	-5%	-9%	-12%	-11%	-13%	-8%	-12%	-16%	-16%	-17%	-19%

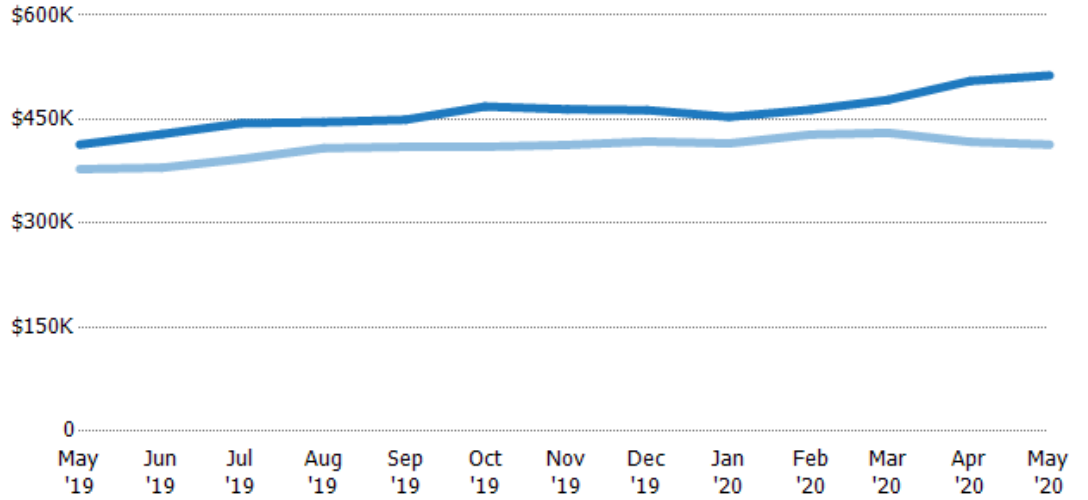
Average Listing Price

The average listing price of active residential listings at the end of each month.

Filters Used

State: VT
 County: Bennington County, Vermont
 Property Type: Condo/Townhouse/Apt, Single Family Residence

Month/Year	Price	% Chg.
May '20	\$513K	24.1%
May '19	\$413K	9.4%
May '18	\$378K	3.2%



Current Year	\$413K	\$429K	\$444K	\$446K	\$449K	\$468K	\$464K	\$463K	\$453K	\$464K	\$478K	\$505K	\$513K
Prior Year	\$378K	\$380K	\$393K	\$408K	\$410K	\$410K	\$413K	\$418K	\$415K	\$428K	\$430K	\$417K	\$413K
Percent Change from Prior Year	9%	13%	13%	9%	10%	14%	12%	11%	9%	8%	11%	21%	24%

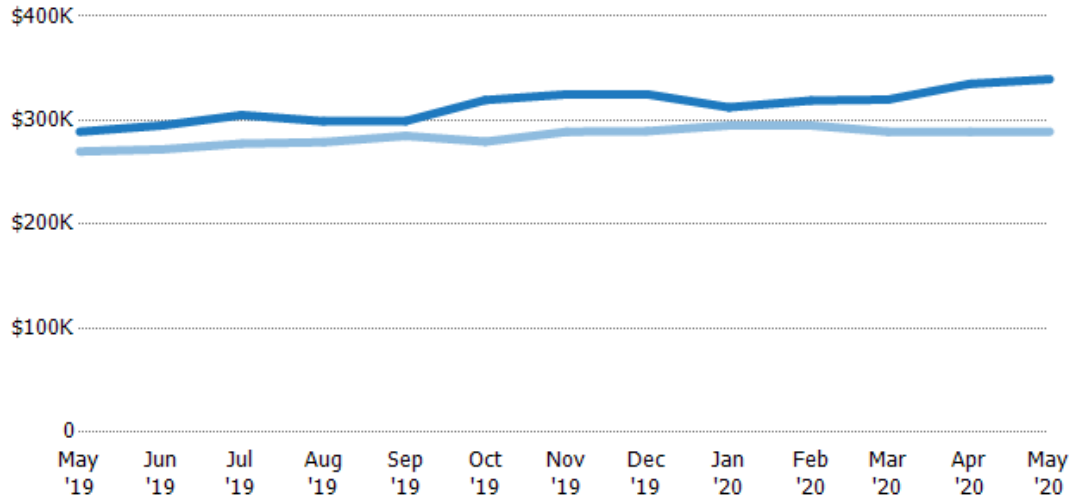
Median Listing Price

The median listing price of active residential listings at the end of each month.

Filters Used

State: VT
 County: Bennington County, Vermont
 Property Type: Condo/Townhouse/Apt, Single Family Residence

Month/Year	Price	% Chg.
May '20	\$339K	17.5%
May '19	\$289K	7%
May '18	\$270K	-0.4%



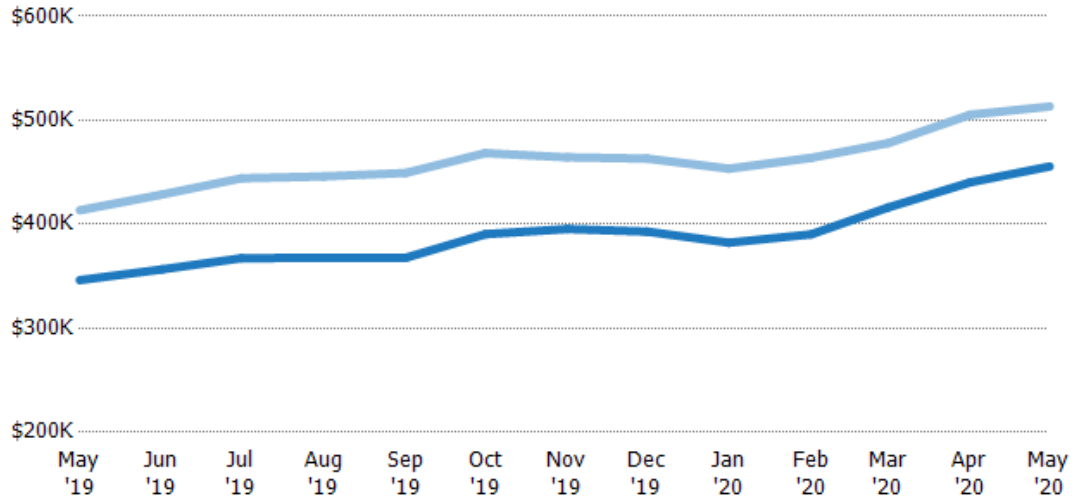
Current Year	\$289K	\$295K	\$305K	\$299K	\$299K	\$319K	\$325K	\$325K	\$312K	\$319K	\$320K	\$335K	\$339K
Prior Year	\$270K	\$272K	\$278K	\$279K	\$285K	\$279K	\$289K	\$290K	\$295K	\$295K	\$289K	\$289K	\$289K
Percent Change from Prior Year	7%	8%	10%	7%	5%	14%	12%	12%	6%	8%	11%	16%	17%

Average Listing Price vs Average Est Value

The average listing price as a percentage of the average AVM or RVM® valuation estimate for active listings each month.

Filters Used

State: VT
 County: Bennington County,
 Vermont
 Property Type:
 Condo/Townhouse/Apt, Single
 Family Residence

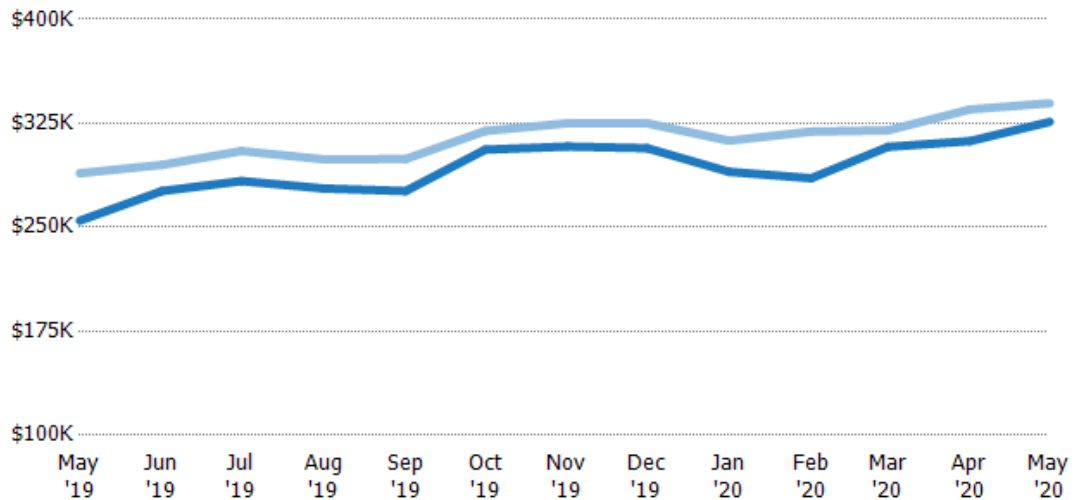


Median Listing Price vs Median Est Value

The median listing price as a percentage of the median AVM or RVM® valuation estimate for active listings each month.

Filters Used

State: VT
 County: Bennington County,
 Vermont
 Property Type:
 Condo/Townhouse/Apt, Single
 Family Residence



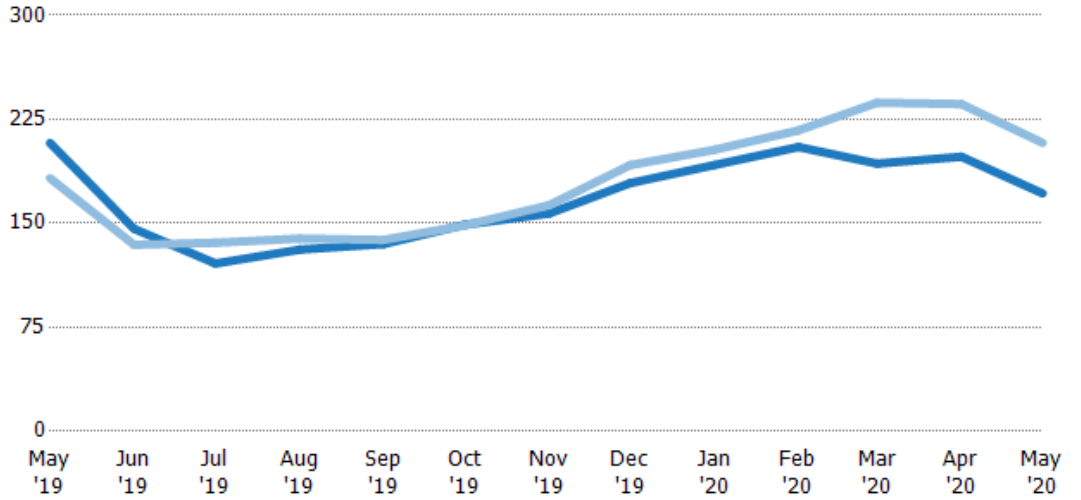
Median Days in RPR

The median number of days between when residential properties are first displayed as active listings in RPR and when accepted offers have been noted in RPR.

Filters Used

State: VT
 County: Bennington County, Vermont
 Property Type: Condo/Townhouse/Apt, Single Family Residence

Month/Year	Days	% Chg.
May '20	172	-17.5%
May '19	208	14%
May '18	183	21.4%



Current Year	208	146	121	131	135	149	157	179	192	205	193	198	172
Prior Year	183	135	136	139	138	149	163	192	203	217	237	236	208
Percent Change from Prior Year	14%	9%	-11%	-6%	-2%	0%	-4%	-7%	-5%	-6%	-19%	-16%	-18%

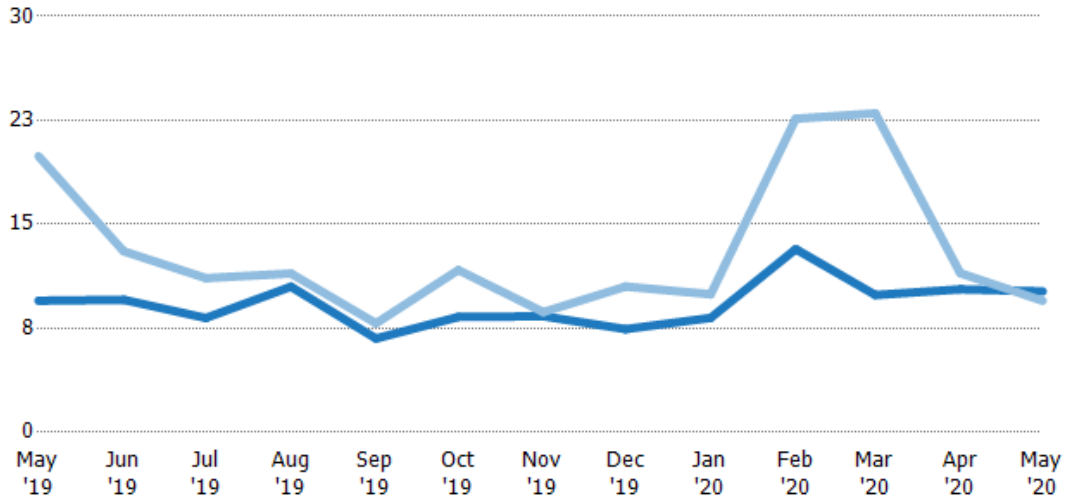
Months of Inventory

The number of months it would take to exhaust active listings at the current sales rate.

Filters Used

State: VT
 County: Bennington County, Vermont
 Property Type: Condo/Townhouse/Apt, Single Family Residence

Month/Year	Months	% Chg.
May '20	10.2	7.1%
May '19	9.49	-52.3%
May '18	19.9	-21.2%



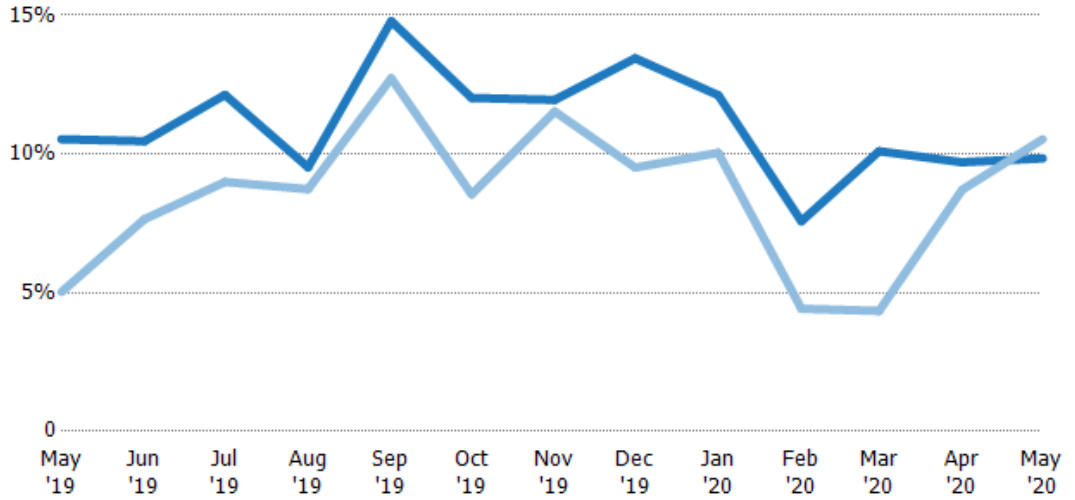
Current Year	9.49	9.56	8.24	10.5	6.76	8.32	8.37	7.43	8.25	13.2	9.9	10.3	10.2
Prior Year	19.9	13.1	11.1	11.5	7.85	11.7	8.67	10.5	9.95	22.6	23	11.5	9.49
Percent Change from Prior Year	-52%	-27%	-26%	-8%	-14%	-29%	-3%	-29%	-17%	-42%	-57%	-10%	7%

Absorption Rate

The percentage of inventory sold per month.

Filters Used

State: VT
 County: Bennington County, Vermont
 Property Type: Condo/Townhouse/Apt, Single Family Residence



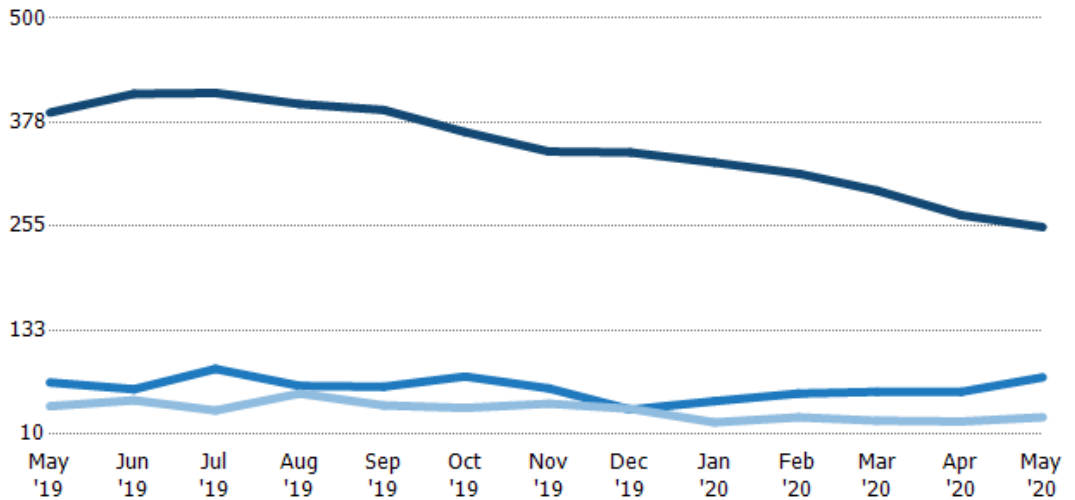
	May '19	Jun '19	Jul '19	Aug '19	Sep '19	Oct '19	Nov '19	Dec '19	Jan '20	Feb '20	Mar '20	Apr '20	May '20
Current Year	11%	10%	12%	10%	15%	12%	12%	13%	12%	8%	10%	10%	10%
Prior Year	5%	8%	9%	9%	13%	9%	12%	10%	10%	4%	4%	9%	11%
Change from Prior Year	-6%	-3%	-3%	-1%	-2%	-3%	0%	-4%	-2%	-3%	-6%	-1%	1%

Active/Pending/Sold Units

The number of residential properties that were Active, Pending and Sold each month.

Filters Used

State: VT
 County: Bennington County, Vermont
 Property Type: Condo/Townhouse/Apt, Single Family Residence



	May '19	Jun '19	Jul '19	Aug '19	Sep '19	Oct '19	Nov '19	Dec '19	Jan '20	Feb '20	Mar '20	Apr '20	May '20
Active	389	411	412	399	392	366	343	342	330	317	297	268	254
Pending	71	63	87	67	66	78	64	39	49	58	60	60	77
Sold	43	50	38	58	44	41	46	40	24	30	26	25	30

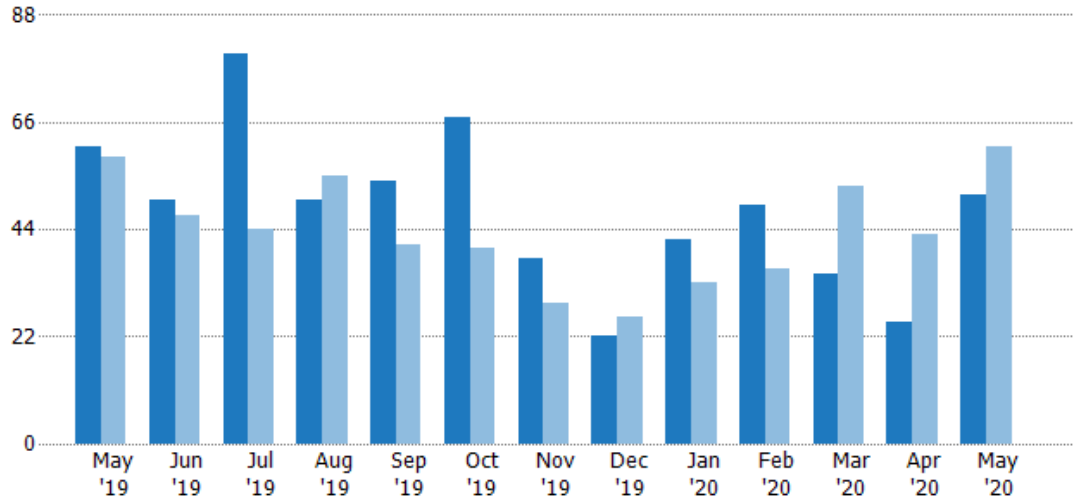
New Pending Sales

The number of residential properties with accepted offers that were added each month.

Filters Used

State: VT
 County: Bennington County, Vermont
 Property Type: Condo/Townhouse/Apt, Single Family Residence

Month/Year	Count	% Chg.
May '20	51	-16.4%
May '19	61	3.4%
May '18	59	-35.6%



Current Year	61	50	80	50	54	67	38	22	42	49	35	25	51
Prior Year	59	47	44	55	41	40	29	26	33	36	53	43	61
Percent Change from Prior Year	3%	6%	82%	-9%	32%	68%	31%	-15%	27%	36%	-34%	-42%	-16%

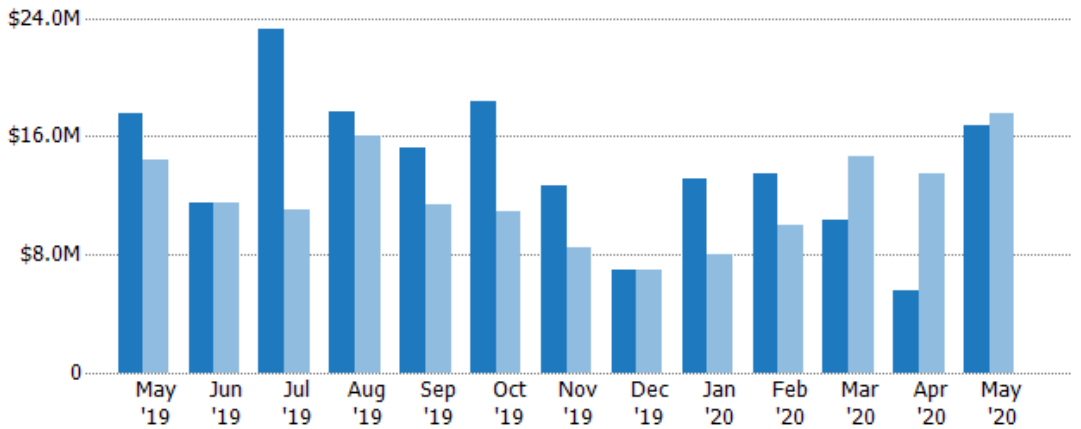
New Pending Sales Volume

The sum of the sales price of residential properties with accepted offers that were added each month.

Filters Used

State: VT
 County: Bennington County, Vermont
 Property Type: Condo/Townhouse/Apt, Single Family Residence

Month/Year	Volume	% Chg.
May '20	\$16.8M	-4.3%
May '19	\$17.5M	21.4%
May '18	\$14.4M	-33.2%



Current Year	\$17.5M	\$11.5M	\$23.2M	\$17.7M	\$15.2M	\$18.3M	\$12.7M	\$6.93M	\$13.1M	\$13.5M	\$10.3M	\$5.55M	\$16.8M
Prior Year	\$14.4M	\$11.5M	\$11.1M	\$16M	\$11.4M	\$11M	\$8.44M	\$7.01M	\$8.01M	\$10M	\$14.6M	\$13.5M	\$17.5M
Percent Change from Prior Year	21%	0%	110%	11%	34%	67%	51%	-1%	63%	35%	-29%	-59%	-4%

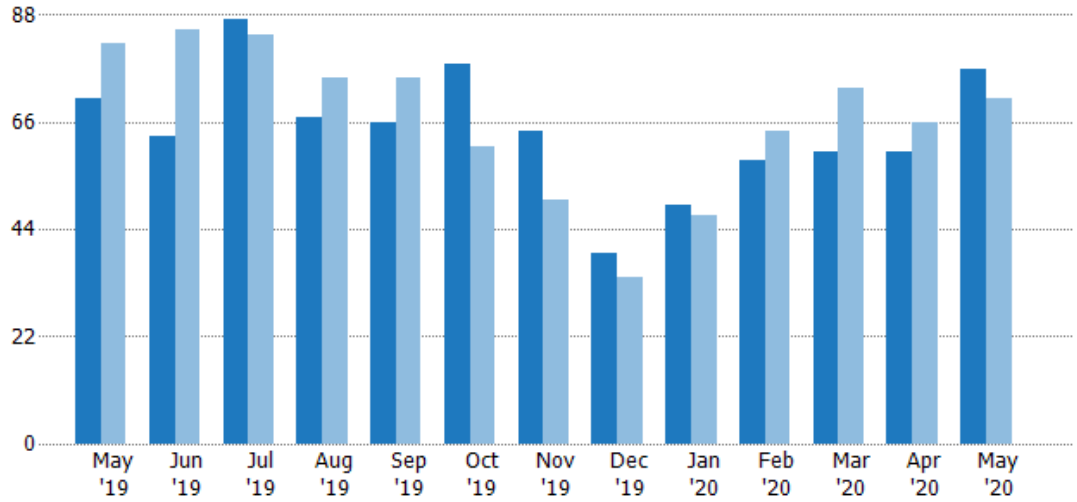
Pending Sales

The number of residential properties with accepted offers that were available at the end each month.

Filters Used

State: VT
 County: Bennington County, Vermont
 Property Type: Condo/Townhouse/Apt, Single Family Residence

Month/Year	Count	% Chg.
May '20	77	8.5%
May '19	71	-13.4%
May '18	82	-20.7%



Current Year	71	63	87	67	66	78	64	39	49	58	60	60	77
Prior Year	82	85	84	75	75	61	50	34	47	64	73	66	71
Percent Change from Prior Year	-13%	-26%	4%	-11%	-12%	28%	28%	15%	4%	-9%	-18%	-9%	8%

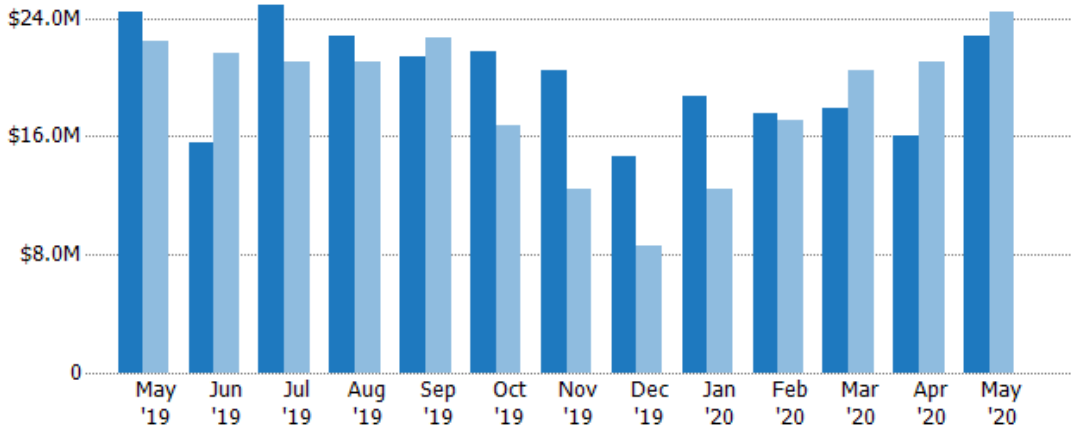
Pending Sales Volume

The sum of the sales price of residential properties with accepted offers that were available at the end of each month.

Filters Used

State: VT
 County: Bennington County, Vermont
 Property Type: Condo/Townhouse/Apt, Single Family Residence

Month/Year	Volume	% Chg.
May '20	\$22.7M	-6.8%
May '19	\$24.4M	8.6%
May '18	\$22.5M	-17.7%



Current Year	\$24.4M	\$15.5M	\$24.9M	\$22.8M	\$21.4M	\$21.7M	\$20.5M	\$14.7M	\$18.7M	\$17.6M	\$17.9M	\$16M	\$22.7M
Prior Year	\$22.5M	\$21.7M	\$21.1M	\$21.1M	\$22.7M	\$16.8M	\$12.4M	\$8.58M	\$12.4M	\$17.1M	\$20.4M	\$21.1M	\$24.4M
Percent Change from Prior Year	9%	-28%	18%	8%	-6%	30%	66%	71%	50%	3%	-12%	-24%	-7%

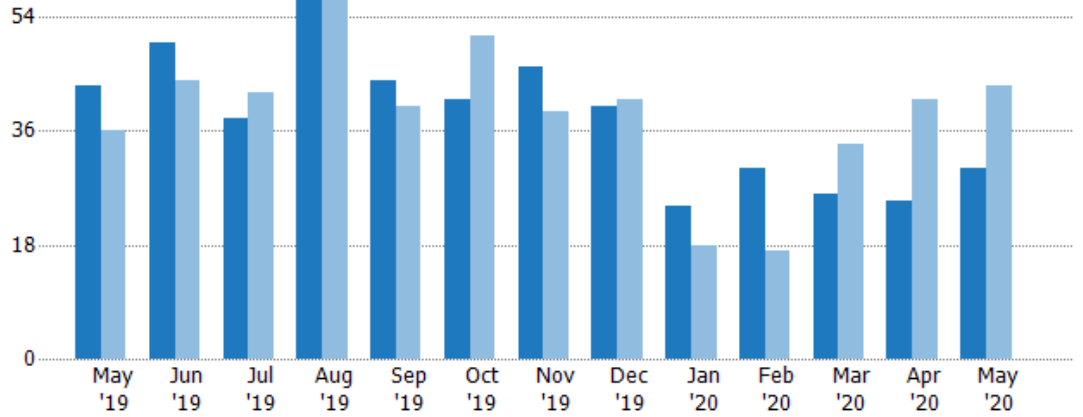
Closed Sales

The total number of residential properties sold each month.

Filters Used

State: VT
 County: Bennington County, Vermont
 Property Type: Condo/Townhouse/Apt, Single Family Residence

Month/Year	Count	% Chg.
May '20	30	-30.2%
May '19	43	19.4%
May '18	36	-36.1%



Current Year	43	50	38	58	44	41	46	40	24	30	26	25	30
Prior Year	36	44	42	62	40	51	39	41	18	17	34	41	43
Percent Change from Prior Year	19%	14%	-10%	-6%	10%	-20%	18%	-2%	33%	76%	-24%	-39%	-30%

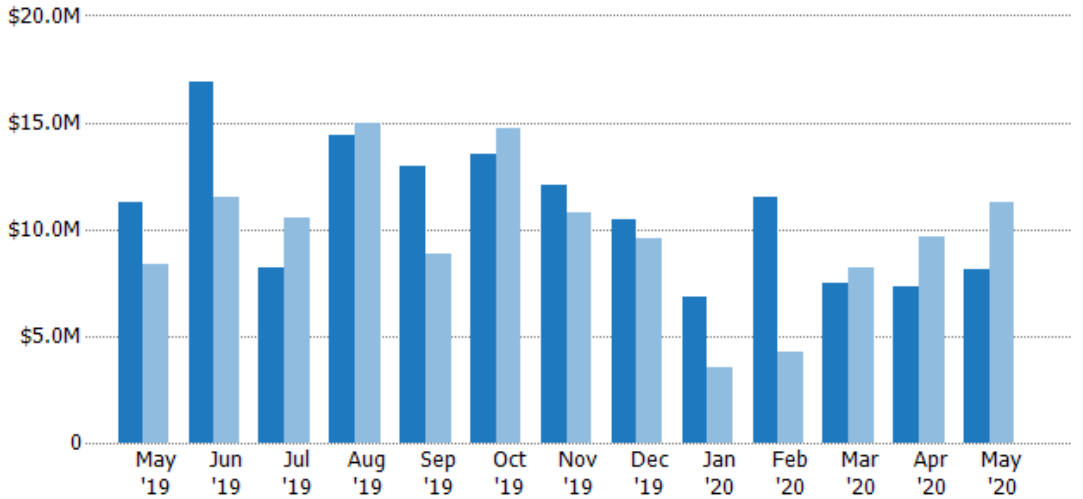
Closed Sales Volume

The sum of the sales price of residential properties sold each month.

Filters Used

State: VT
 County: Bennington County, Vermont
 Property Type: Condo/Townhouse/Apt, Single Family Residence

Month/Year	Volume	% Chg.
May '20	\$8.08M	-28%
May '19	\$11.2M	33.6%
May '18	\$8.4M	-27.1%



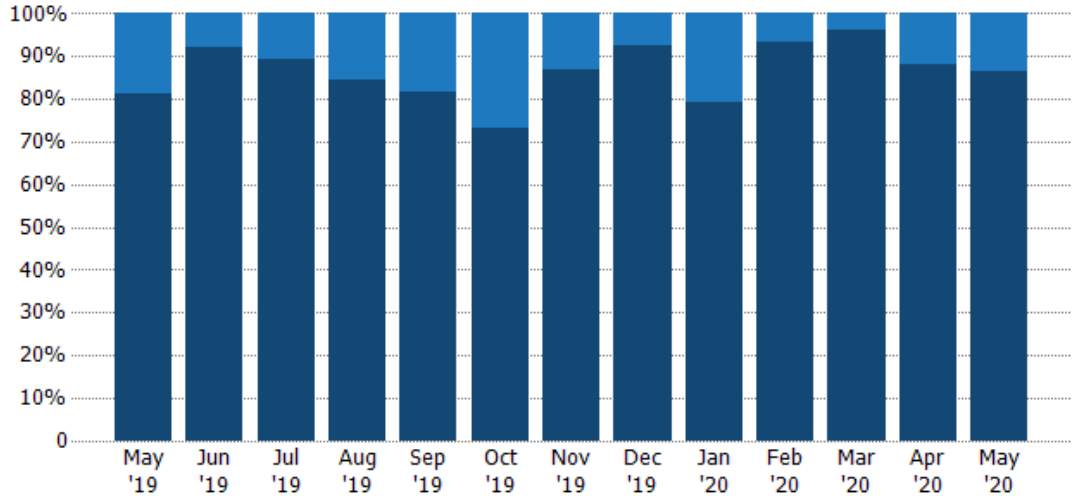
Current Year	\$11.2M	\$16.9M	\$8.17M	\$14.4M	\$13M	\$13.5M	\$12.1M	\$10.4M	\$6.8M	\$11.5M	\$7.48M	\$7.28M	\$8.08M
Prior Year	\$8.4M	\$11.5M	\$10.5M	\$15M	\$8.88M	\$14.7M	\$10.7M	\$9.57M	\$3.53M	\$4.29M	\$8.23M	\$9.65M	\$11.2M
Percent Change from Prior Year	34%	47%	-22%	-4%	46%	-8%	12%	9%	93%	167%	-9%	-25%	-28%

Closed Sales by Property Type

The percentage of residential properties sold each month by property type.

Filters Used

State: VT
 County: Bennington County, Vermont
 Property Type: Condo/Townhouse/Apt, Single Family Residence



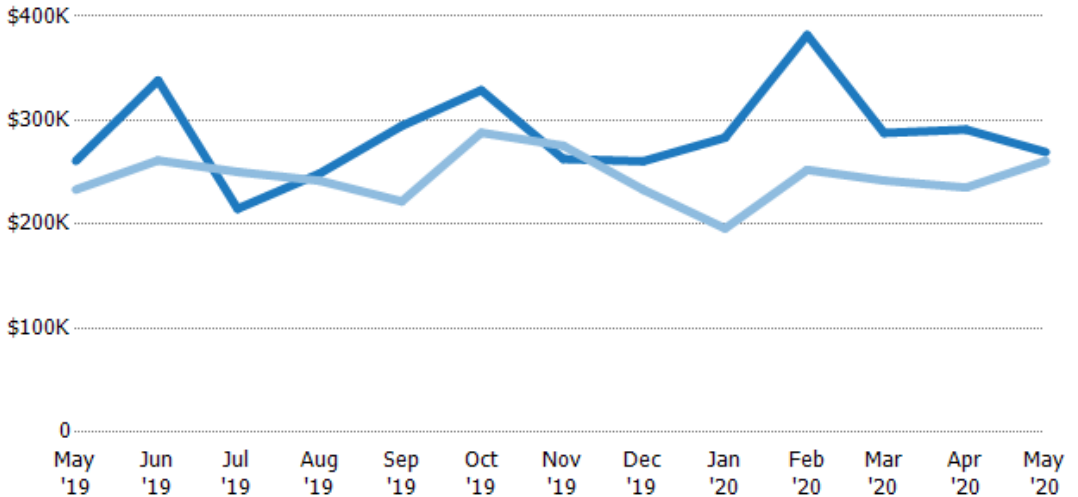
Condo/Townhouse	19%	8%	11%	16%	18%	27%	13%	8%	21%	7%	4%	12%	13%
Single Family Residence	81%	92%	89%	84%	82%	73%	87%	93%	79%	93%	96%	88%	87%

Average Sales Price

The average sales price of the residential properties sold each month.

Filters Used

State: VT
 County: Bennington County, Vermont
 Property Type: Condo/Townhouse/Apt, Single Family Residence



Month/Year	Price	% Chg.
May '20	\$269K	3.3%
May '19	\$261K	11.8%
May '18	\$233K	14.2%

Current Year	\$261K	\$338K	\$215K	\$249K	\$295K	\$329K	\$263K	\$261K	\$283K	\$382K	\$288K	\$291K	\$269K
Prior Year	\$233K	\$261K	\$250K	\$242K	\$222K	\$288K	\$275K	\$233K	\$196K	\$252K	\$242K	\$235K	\$261K
Percent Change from Prior Year	12%	29%	-14%	3%	33%	14%	-5%	12%	45%	51%	19%	24%	3%

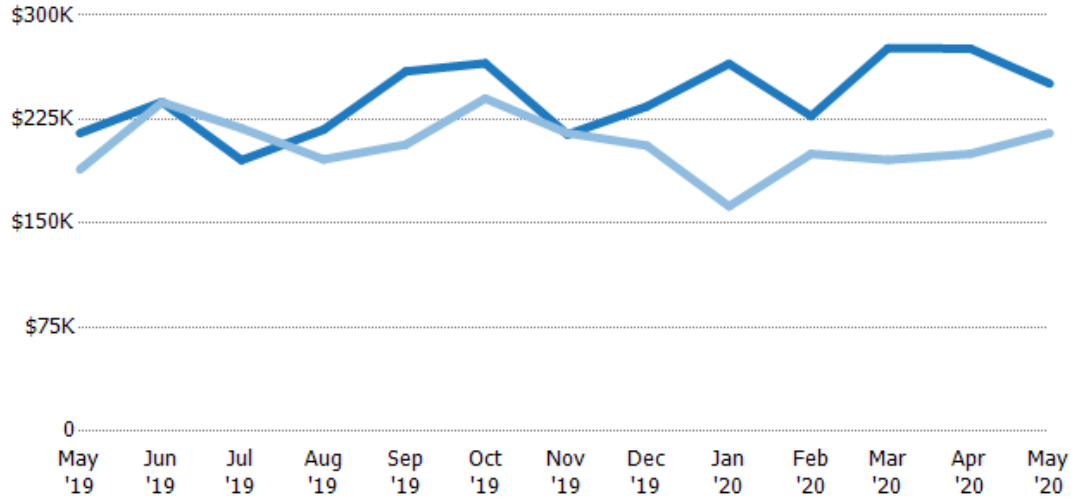
Median Sales Price

The median sales price of the residential properties sold each month.

Filters Used

State: VT
 County: Bennington County, Vermont
 Property Type: Condo/Townhouse/Apt, Single Family Residence

Month/Year	Price	% Chg.
May '20	\$251K	16.6%
May '19	\$215K	13.9%
May '18	\$189K	11.3%



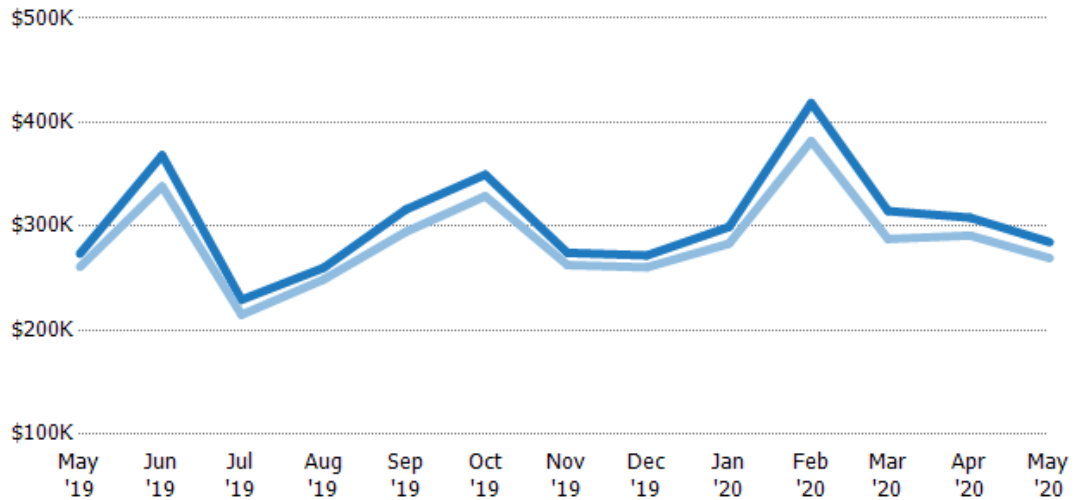
	May '19	Jun '19	Jul '19	Aug '19	Sep '19	Oct '19	Nov '19	Dec '19	Jan '20	Feb '20	Mar '20	Apr '20	May '20
Current Year	\$215K	\$238K	\$196K	\$218K	\$260K	\$265K	\$214K	\$234K	\$265K	\$227K	\$276K	\$276K	\$251K
Prior Year	\$189K	\$237K	\$219K	\$196K	\$207K	\$240K	\$215K	\$206K	\$162K	\$200K	\$196K	\$200K	\$215K
Percent Change from Prior Year	14%	0%	-11%	11%	26%	11%	0%	14%	63%	14%	41%	38%	17%

Average Sales Price vs Average Listing Price

The average sales price as a percentage of the average listing price for properties sold each month.

Filters Used

State: VT
 County: Bennington County, Vermont
 Property Type: Condo/Townhouse/Apt, Single Family Residence



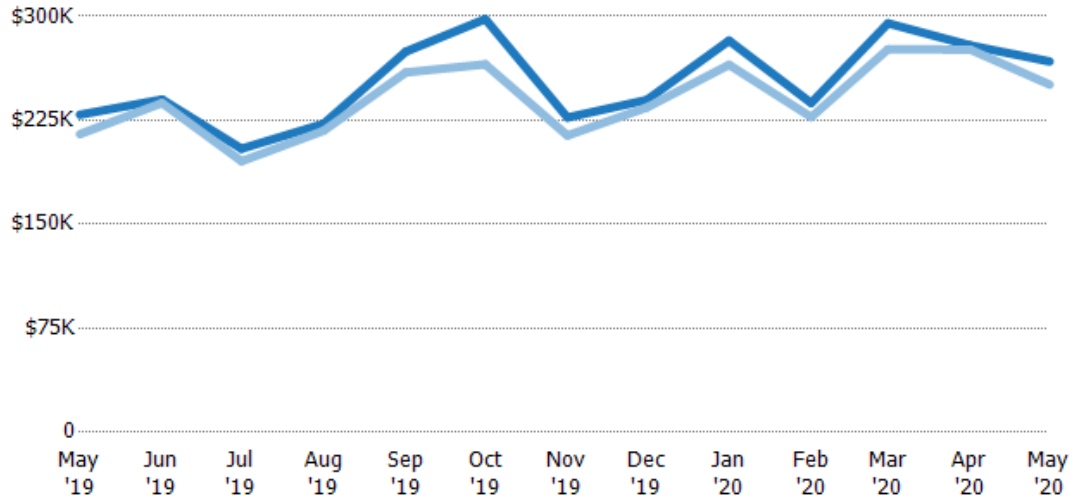
	May '19	Jun '19	Jul '19	Aug '19	Sep '19	Oct '19	Nov '19	Dec '19	Jan '20	Feb '20	Mar '20	Apr '20	May '20
Avg List Price	\$274K	\$368K	\$229K	\$260K	\$316K	\$350K	\$274K	\$272K	\$299K	\$418K	\$315K	\$308K	\$285K
Avg Sales Price	\$261K	\$338K	\$215K	\$249K	\$295K	\$329K	\$263K	\$261K	\$283K	\$382K	\$288K	\$291K	\$269K
Avg Sales Price as a % of Avg List Price	95%	92%	94%	96%	93%	94%	96%	96%	95%	91%	91%	94%	95%

Median Sales Price vs Median Listing Price

The median sales price as a percentage of the median listing price for properties sold each month.

Filters Used

State: VT
 County: Bennington County, Vermont
 Property Type: Condo/Townhouse/Apt, Single Family Residence



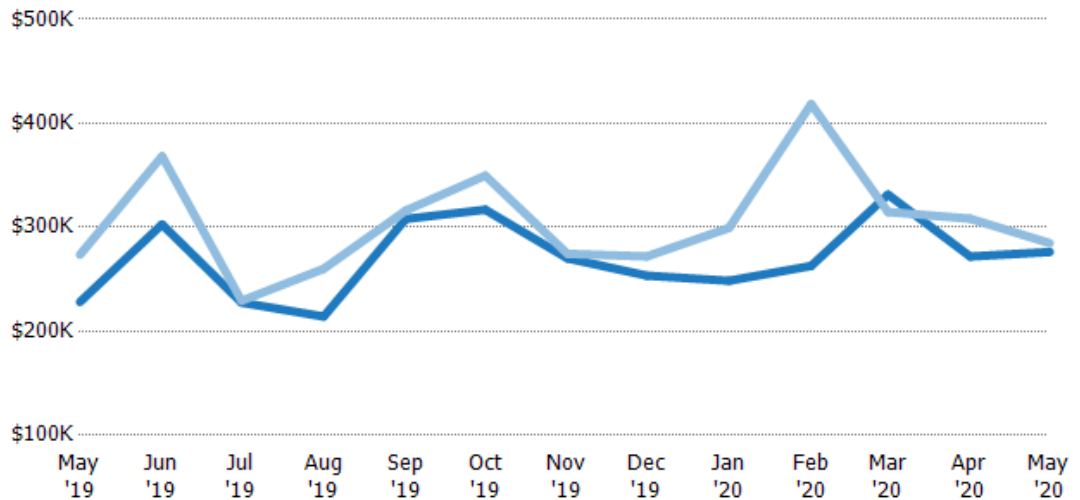
	May '19	Jun '19	Jul '19	Aug '19	Sep '19	Oct '19	Nov '19	Dec '19	Jan '20	Feb '20	Mar '20	Apr '20	May '20
Median List Price	\$229K	\$240K	\$205K	\$222K	\$275K	\$298K	\$227K	\$240K	\$282K	\$237K	\$295K	\$279K	\$267K
Median Sales Price	\$215K	\$238K	\$196K	\$218K	\$260K	\$265K	\$214K	\$234K	\$265K	\$227K	\$276K	\$276K	\$251K
Med Sales Price as a % of Med List Price	94%	99%	96%	98%	95%	89%	94%	98%	94%	96%	94%	99%	94%

Average Sales Price vs Average Est Value

The average sales price as a percentage of the average AVM or RVM® valuation estimate for properties sold each month.

Filters Used

State: VT
 County: Bennington County, Vermont
 Property Type: Condo/Townhouse/Apt, Single Family Residence



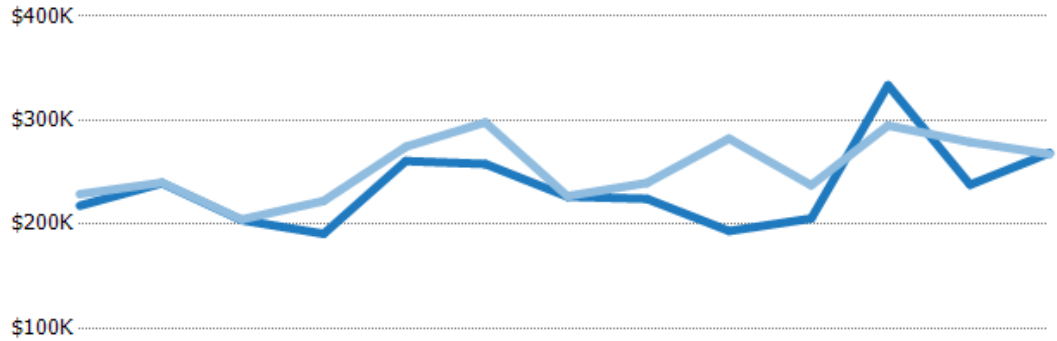
	May '19	Jun '19	Jul '19	Aug '19	Sep '19	Oct '19	Nov '19	Dec '19	Jan '20	Feb '20	Mar '20	Apr '20	May '20
Avg Est Value	\$228K	\$303K	\$228K	\$214K	\$308K	\$317K	\$270K	\$254K	\$249K	\$263K	\$331K	\$272K	\$276K
Avg Sales Price	\$274K	\$368K	\$229K	\$260K	\$316K	\$350K	\$274K	\$272K	\$299K	\$418K	\$315K	\$308K	\$285K
Avg Sales Price as a % of Avg Est Value	120%	122%	101%	121%	103%	110%	102%	107%	120%	159%	95%	113%	103%

Median Sales Price vs Median Est Value

The median sales price as a percent of the median AVM or RVM® valuation estimate for properties sold each month.

Filters Used

State: VT
 County: Bennington County, Vermont
 Property Type: Condo/Townhouse/Apt, Single Family Residence



	May '19	Jun '19	Jul '19	Aug '19	Sep '19	Oct '19	Nov '19	Dec '19	Jan '20	Feb '20	Mar '20	Apr '20	May '20
Median Est Value	\$218K	\$239K	\$204K	\$191K	\$261K	\$258K	\$227K	\$224K	\$194K	\$206K	\$334K	\$238K	\$269K
Median Sales Price	\$229K	\$240K	\$205K	\$222K	\$275K	\$298K	\$227K	\$240K	\$282K	\$237K	\$295K	\$279K	\$267K
Med Sales Price as a % of Med Est Value	105%	100%	100%	117%	105%	116%	100%	107%	146%	116%	88%	117%	100%