

Summary of Key Listing and Sales Metrics

A summary of the key metrics selected to be included in the report. MLS sources where licensed.

Key Metrics	Apr 2020	Apr 2019	+ / -	YTD 2020	YTD 2019	+ / -
Listing Activity Charts Metrics						
New Listing Count	4	9	-55.6%	24	22	+9.1%
New Listing Volume	\$595,460	\$1,903,600	-68.7%	\$4,674,760	\$3,874,100	+20.7%
Active Listing Count	31	44	-29.5%	N/A	N/A	
Active Listing Volume	\$7,534,360	\$9,870,184	-23.7%	N/A	N/A	
Average Listing Price	\$243,044	\$224,322	+8.3%	\$212,751	\$211,848	+0.4%
Median Listing Price	\$189,900	\$205,492	-7.6%	\$174,236	\$195,922	-11.1%
Median Days in RPR	215	248.5	-13.5%	195.78	233.46	-16.1%
Months of Inventory	6.2	14.7	-57.7%	11.5	12.3	-5.9%
Absorption Rate	16.13%	6.82%	+9.3%	8.67%	8.15%	+0.5%
Sales Activity Charts Metrics						
New Pending Sales Count	5	4	+25%	25	19	+31.6%
New Pending Sales Volume	\$551,800	\$604,800	-8.8%	\$3,064,519	\$3,017,900	+1.5%
Pending Sales Count	13	9	+44.4%	N/A	N/A	
Pending Sales Volume	\$1,911,619	\$1,611,200	+18.6%	N/A	N/A	
Closed Sales Count	4	3	+33.3%	18	13	+38.5%
Closed Sales Volume	\$412,000	\$475,900	-13.4%	\$1,951,129	\$1,682,800	+15.9%
Average Sales Price	\$103,000	\$158,633	-35.1%	\$108,396	\$129,446	-16.3%
Median Sales Price	\$102,200	\$121,900	-16.2%	\$111,283	\$129,777	-14.3%

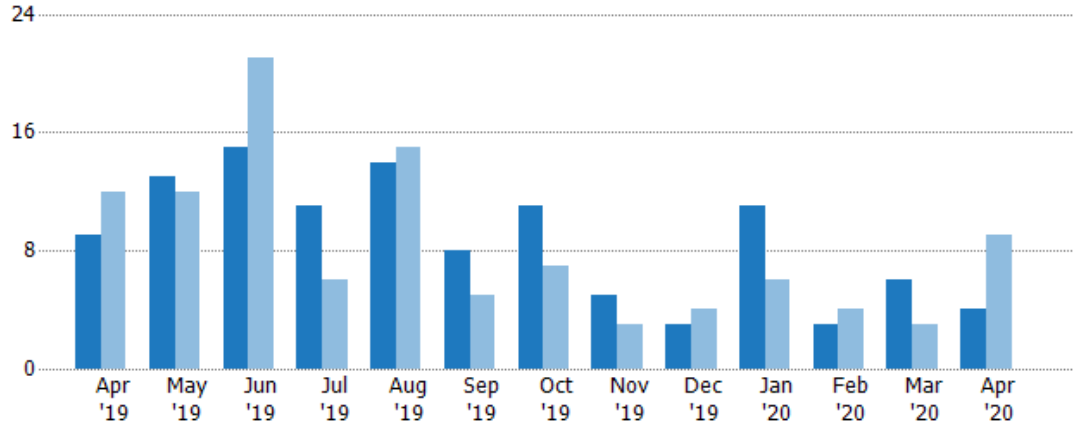
New Listings

The number of new residential listings that were added each month.

Filters Used

ZIP: Newport, VT 05855
 Property Type:
 Condo/Townhouse/Apt, Single
 Family Residence

Month/ Year	Count	% Chg.
Apr '20	4	-55.6%
Apr '19	9	-25%
Apr '18	12	16.7%



Current Year	9	13	15	11	14	8	11	5	3	11	3	6	4
Prior Year	12	12	21	6	15	5	7	3	4	6	4	3	9
Percent Change from Prior Year	-25%	8%	-29%	83%	-7%	60%	57%	67%	-25%	83%	-25%	100%	-56%

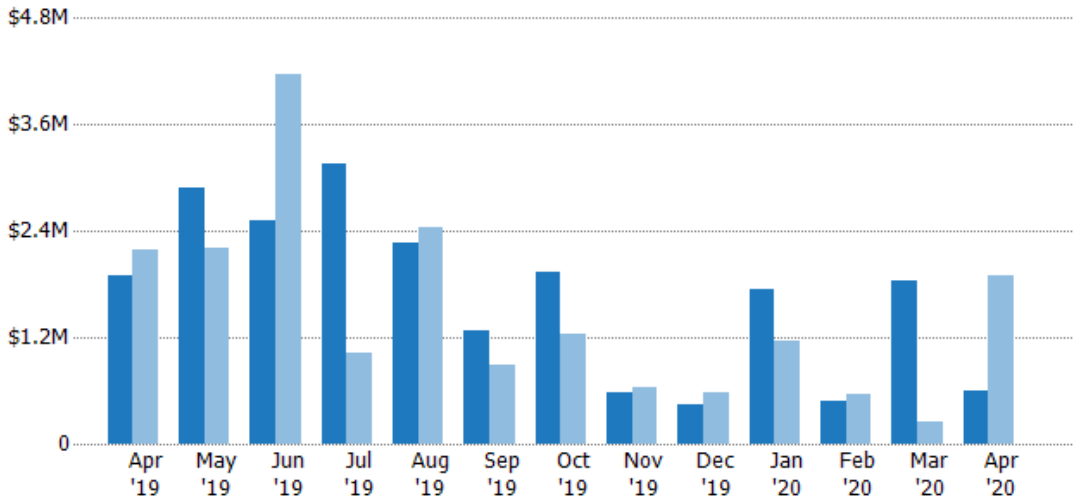
New Listing Volume

The sum of the listing price of residential listings that were added each month.

Filters Used

ZIP: Newport, VT 05855
 Property Type:
 Condo/Townhouse/Apt, Single
 Family Residence

Month/ Year	Volume	% Chg.
Apr '20	\$595K	-68.7%
Apr '19	\$1.9M	-12.8%
Apr '18	\$2.18M	27.8%



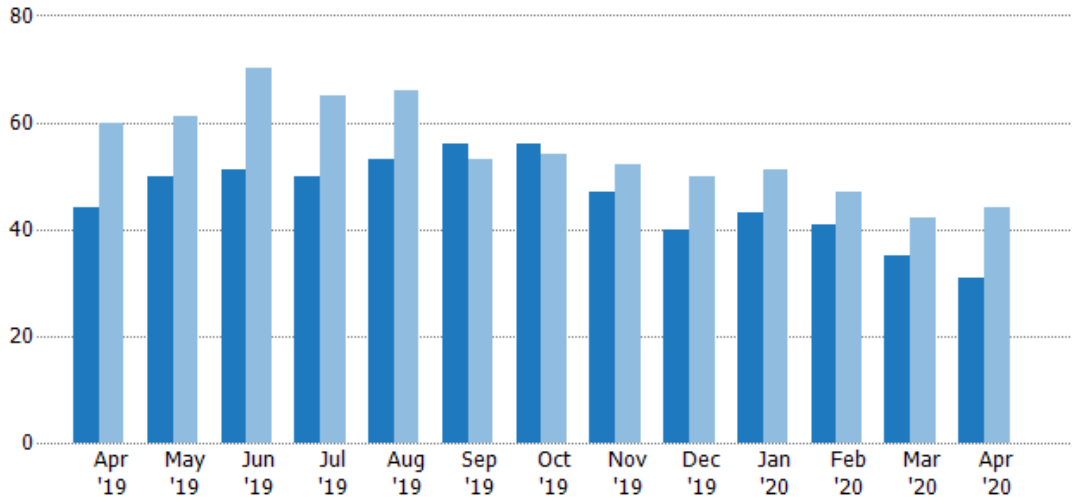
Current Year	\$1.9M	\$2.89M	\$2.51M	\$3.16M	\$2.27M	\$1.28M	\$1.93M	\$575K	\$444K	\$1.75M	\$489K	\$1.84M	\$595K
Prior Year	\$2.18M	\$2.21M	\$4.17M	\$1.02M	\$2.45M	\$892K	\$1.24M	\$644K	\$584K	\$1.16M	\$560K	\$253K	\$1.9M
Percent Change from Prior Year	-13%	31%	-40%	209%	-7%	43%	56%	-11%	-24%	51%	-13%	631%	-69%

Active Listings

The number of active residential listings at the end of each month.

Filters Used

ZIP: Newport, VT 05855
 Property Type:
 Condo/Townhouse/Apt, Single
 Family Residence



Month/Year	Count	% Chg.
Apr '20	31	-29.5%
Apr '19	44	-26.7%
Apr '18	60	-18.3%

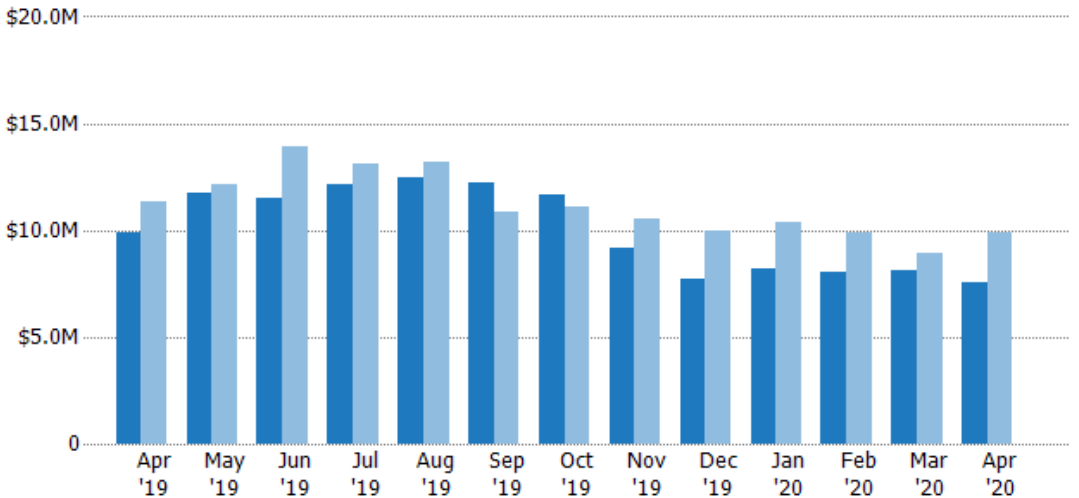
	Apr '19	May '19	Jun '19	Jul '19	Aug '19	Sep '19	Oct '19	Nov '19	Dec '19	Jan '20	Feb '20	Mar '20	Apr '20
Current Year	44	50	51	50	53	56	56	47	40	43	41	35	31
Prior Year	60	61	70	65	66	53	54	52	50	51	47	42	44
Percent Change from Prior Year	-27%	-18%	-27%	-23%	-20%	6%	4%	-10%	-20%	-16%	-13%	-17%	-30%

Active Listing Volume

The sum of the listing price of active residential listings at the end of each month.

Filters Used

ZIP: Newport, VT 05855
 Property Type:
 Condo/Townhouse/Apt, Single
 Family Residence



Month/Year	Volume	% Chg.
Apr '20	\$7.53M	-23.7%
Apr '19	\$9.87M	-12.6%
Apr '18	\$11.3M	-16%

	Apr '19	May '19	Jun '19	Jul '19	Aug '19	Sep '19	Oct '19	Nov '19	Dec '19	Jan '20	Feb '20	Mar '20	Apr '20
Current Year	\$9.87M	\$11.7M	\$11.5M	\$12.1M	\$12.5M	\$12.2M	\$11.6M	\$9.19M	\$7.73M	\$8.23M	\$8.04M	\$8.1M	\$7.53M
Prior Year	\$11.3M	\$12.1M	\$13.9M	\$13.1M	\$13.2M	\$10.8M	\$11.1M	\$10.5M	\$10M	\$10.3M	\$9.88M	\$8.9M	\$9.87M
Percent Change from Prior Year	-13%	-3%	-17%	-7%	-5%	13%	5%	-13%	-23%	-20%	-19%	-9%	-24%

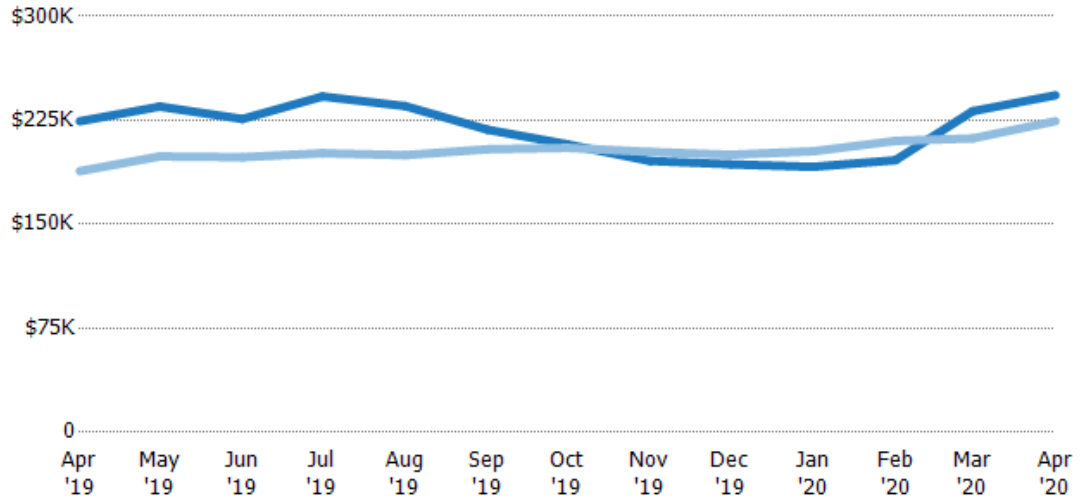
Average Listing Price

The average listing price of active residential listings at the end of each month.

Filters Used

ZIP: Newport, VT 05855
 Property Type:
 Condo/Townhouse/Apt, Single
 Family Residence

Month/ Year	Price	% Chg.
Apr '20	\$243K	8.3%
Apr '19	\$224K	19.1%
Apr '18	\$188K	2.8%



Current Year	\$224K	\$235K	\$226K	\$242K	\$235K	\$218K	\$208K	\$196K	\$193K	\$191K	\$196K	\$232K	\$243K
Prior Year	\$188K	\$199K	\$198K	\$201K	\$200K	\$204K	\$205K	\$202K	\$200K	\$203K	\$210K	\$212K	\$224K
Percent Change from Prior Year	19%	18%	14%	20%	18%	7%	1%	-3%	-3%	-6%	-7%	9%	8%

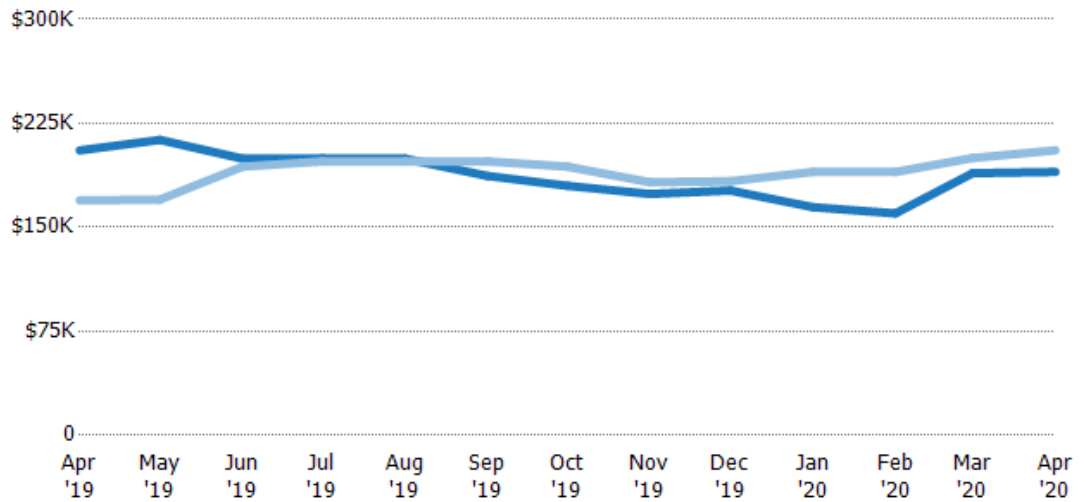
Median Listing Price

The median listing price of active residential listings at the end of each month.

Filters Used

ZIP: Newport, VT 05855
 Property Type:
 Condo/Townhouse/Apt, Single
 Family Residence

Month/ Year	Price	% Chg.
Apr '20	\$190K	-7.6%
Apr '19	\$205K	21.3%
Apr '18	\$169K	-3.3%



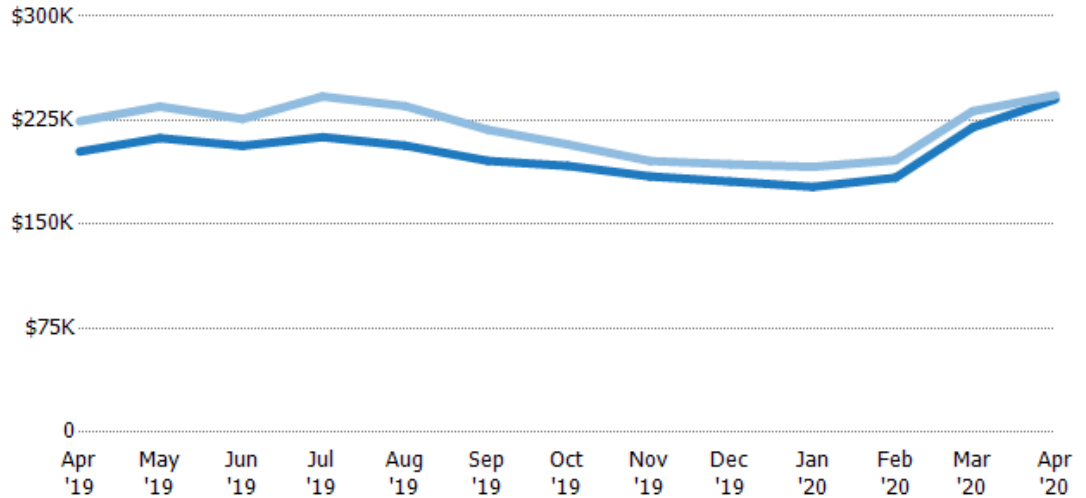
Current Year	\$205K	\$213K	\$200K	\$200K	\$200K	\$187K	\$180K	\$174K	\$177K	\$165K	\$160K	\$189K	\$190K
Prior Year	\$169K	\$170K	\$194K	\$198K	\$198K	\$198K	\$194K	\$182K	\$183K	\$190K	\$190K	\$200K	\$205K
Percent Change from Prior Year	21%	25%	3%	1%	1%	-5%	-7%	-5%	-4%	-13%	-16%	-5%	-8%

Average Listing Price vs Average Est Value

The average listing price as a percentage of the average AVM or RVM® valuation estimate for active listings each month.

Filters Used

ZIP: Newport, VT 05855
 Property Type:
 Condo/Townhouse/Apt, Single
 Family Residence



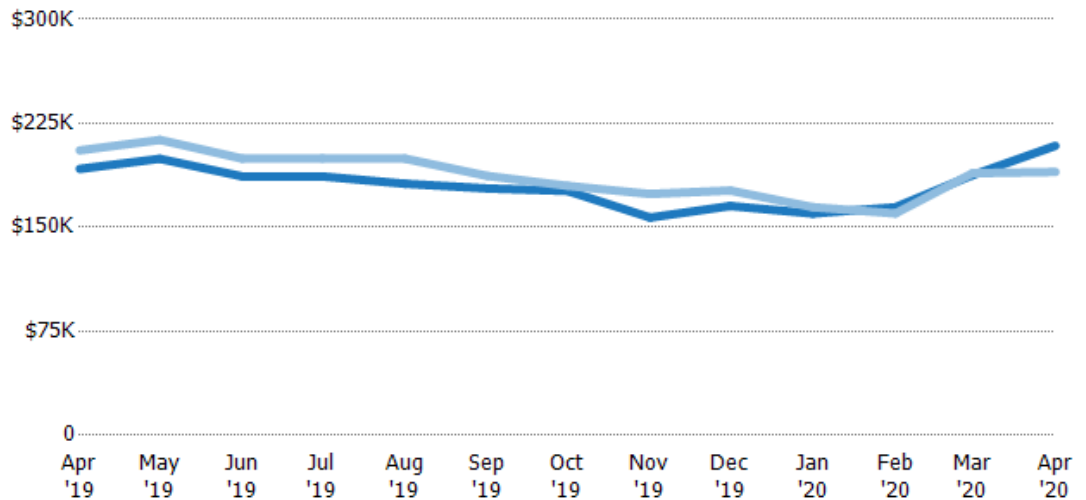
Avg Est Value	\$202K	\$212K	\$207K	\$213K	\$207K	\$196K	\$192K	\$185K	\$181K	\$177K	\$184K	\$220K	\$240K
Avg Listing Price	\$224K	\$235K	\$226K	\$242K	\$235K	\$218K	\$208K	\$196K	\$193K	\$191K	\$196K	\$232K	\$243K
Avg Listing Price as a % of Avg Est Value	111%	111%	109%	114%	114%	111%	108%	106%	107%	108%	107%	105%	101%

Median Listing Price vs Median Est Value

The median listing price as a percentage of the median AVM or RVM® valuation estimate for active listings each month.

Filters Used

ZIP: Newport, VT 05855
 Property Type:
 Condo/Townhouse/Apt, Single
 Family Residence



Median Est Value	\$192K	\$199K	\$187K	\$187K	\$181K	\$178K	\$176K	\$157K	\$165K	\$160K	\$164K	\$188K	\$209K
Median Listing Price	\$205K	\$213K	\$200K	\$200K	\$200K	\$187K	\$180K	\$174K	\$177K	\$165K	\$160K	\$189K	\$190K
Med Listing Price as a % of Med Est Value	107%	107%	107%	107%	110%	105%	102%	111%	107%	103%	97%	101%	91%

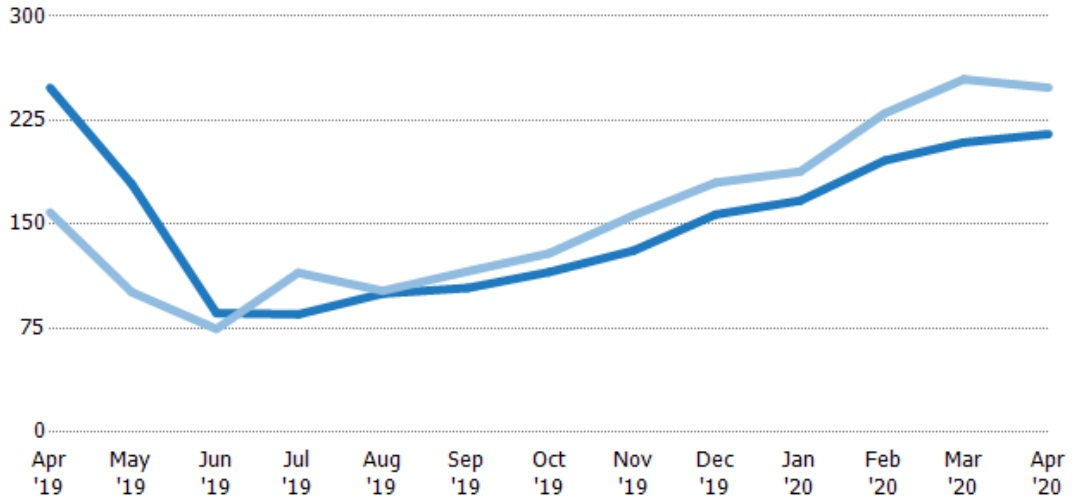
Median Days in RPR

The median number of days between when residential properties are first displayed as active listings in RPR and when accepted offers have been noted in RPR.

Filters Used

ZIP: Newport, VT 05855
 Property Type:
 Condo/Townhouse/Apt, Single
 Family Residence

Month/ Year	Days	% Chg.
Apr '20	215	-13.5%
Apr '19	249	56.8%
Apr '18	159	-36.3%



	Apr '19	May '19	Jun '19	Jul '19	Aug '19	Sep '19	Oct '19	Nov '19	Dec '19	Jan '20	Feb '20	Mar '20	Apr '20
Current Year	249	179	86	85	100	104	116	131	157	167	196	209	215
Prior Year	159	101	74.5	115	102	116	129	157	180	188	230	255	249
Percent Change from Prior Year	57%	77%	15%	-26%	-2%	-10%	-10%	-16%	-13%	-11%	-15%	-18%	-13%

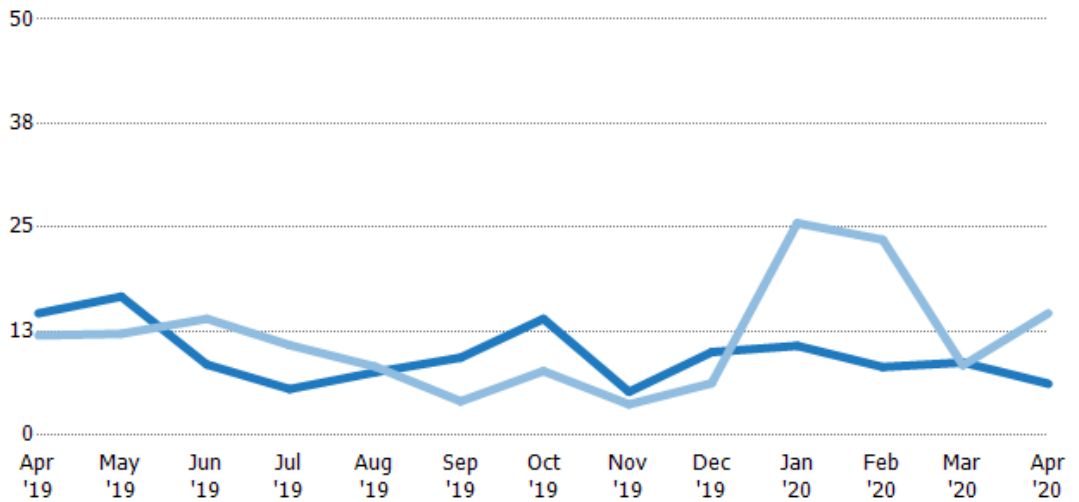
Months of Inventory

The number of months it would take to exhaust active listings at the current sales rate.

Filters Used

ZIP: Newport, VT 05855
 Property Type:
 Condo/Townhouse/Apt, Single
 Family Residence

Month/ Year	Months	% Chg.
Apr '20	6.2	-57.7%
Apr '19	14.7	22.2%
Apr '18	12	308.3%



	Apr '19	May '19	Jun '19	Jul '19	Aug '19	Sep '19	Oct '19	Nov '19	Dec '19	Jan '20	Feb '20	Mar '20	Apr '20
Current Year	14.7	16.7	8.5	5.56	7.57	9.33	14	5.22	10	10.8	8.2	8.75	6.2
Prior Year	12	12.2	14	10.8	8.25	4.08	7.71	3.71	6.25	25.5	23.5	8.4	14.7
Percent Change from Prior Year	22%	37%	-39%	-49%	-8%	129%	81%	41%	60%	-58%	-65%	4%	-58%

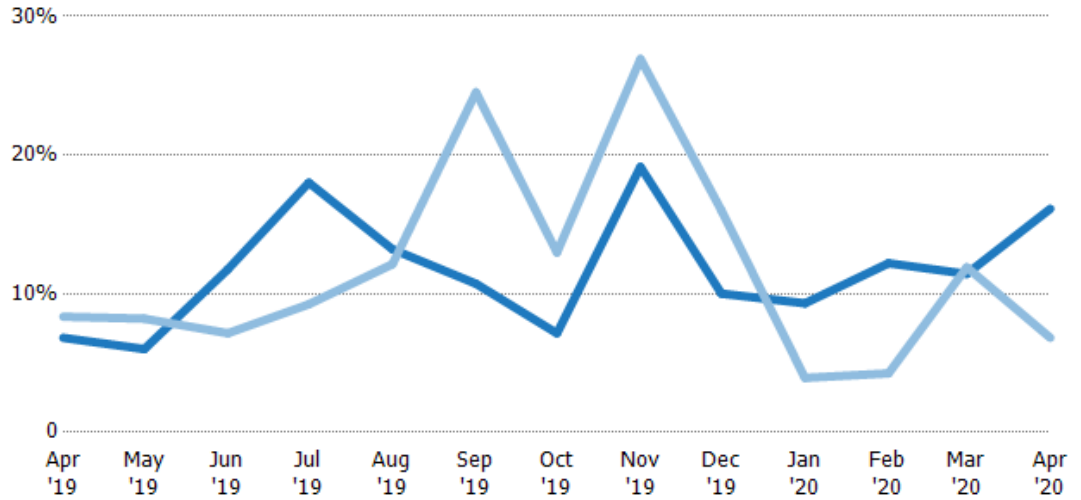
Absorption Rate

The percentage of inventory sold per month.

Filters Used

ZIP: Newport, VT 05855
 Property Type:
 Condo/Townhouse/Apt, Single
 Family Residence

Month/ Year	Rate	Chg.
Apr '20	16%	-9.3%
Apr '19	7%	1.5%
Apr '18	8%	-75.5%



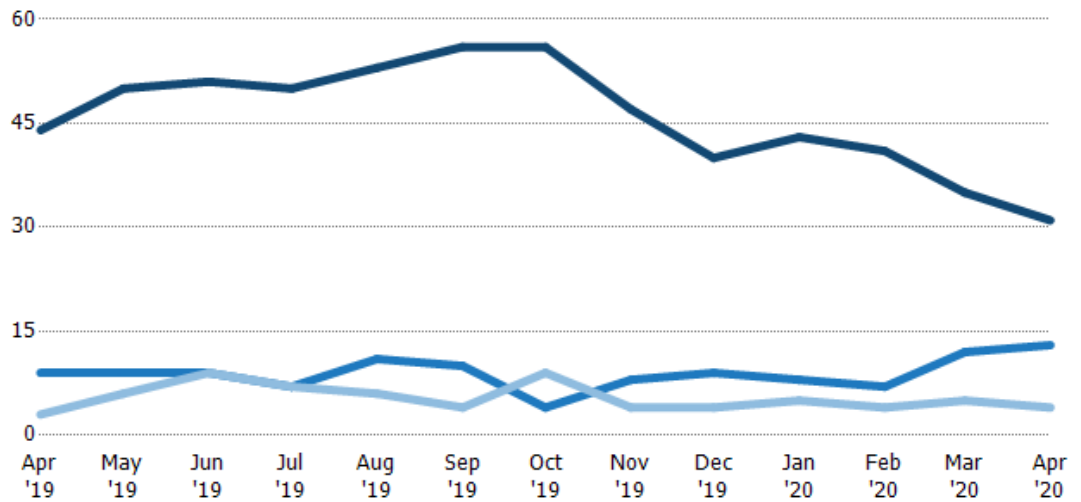
Current Year	7%	6%	12%	18%	13%	11%	7%	19%	10%	9%	12%	11%	16%
Prior Year	8%	8%	7%	9%	12%	25%	13%	27%	16%	4%	4%	12%	7%
Change from Prior Year	2%	2%	-5%	-9%	-1%	14%	6%	8%	6%	-5%	-8%	0%	-9%

Active/Pending/Sold Units

The number of residential properties that were Active, Pending and Sold each month.

Filters Used

ZIP: Newport, VT 05855
 Property Type:
 Condo/Townhouse/Apt, Single
 Family Residence



Active	44	50	51	50	53	56	56	47	40	43	41	35	31
Pending	9	9	9	7	11	10	4	8	9	8	7	12	13
Sold	3	6	9	7	6	4	9	4	4	5	4	5	4

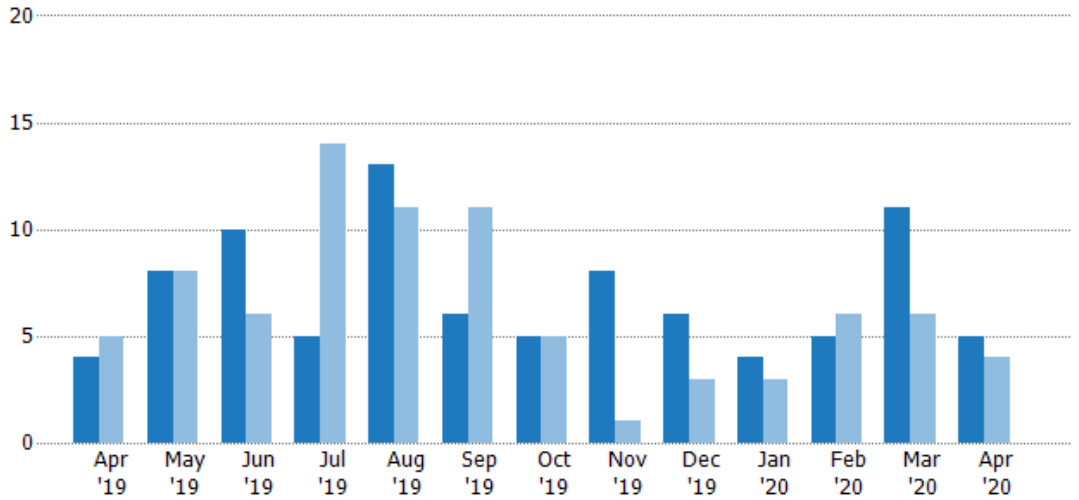
New Pending Sales

The number of residential properties with accepted offers that were added each month.

Filters Used

ZIP: Newport, VT 05855
 Property Type:
 Condo/Townhouse/Apt, Single
 Family Residence

Month/Year	Count	% Chg.
Apr '20	5	25%
Apr '19	4	-20%
Apr '18	5	-40%



	Apr '19	May '19	Jun '19	Jul '19	Aug '19	Sep '19	Oct '19	Nov '19	Dec '19	Jan '20	Feb '20	Mar '20	Apr '20
Current Year	4	8	10	5	13	6	5	8	6	4	5	11	5
Prior Year	5	8	6	14	11	11	5	1	3	3	6	6	4
Percent Change from Prior Year	-20%	0%	67%	-64%	18%	-45%	0%	700%	100%	33%	-17%	83%	25%

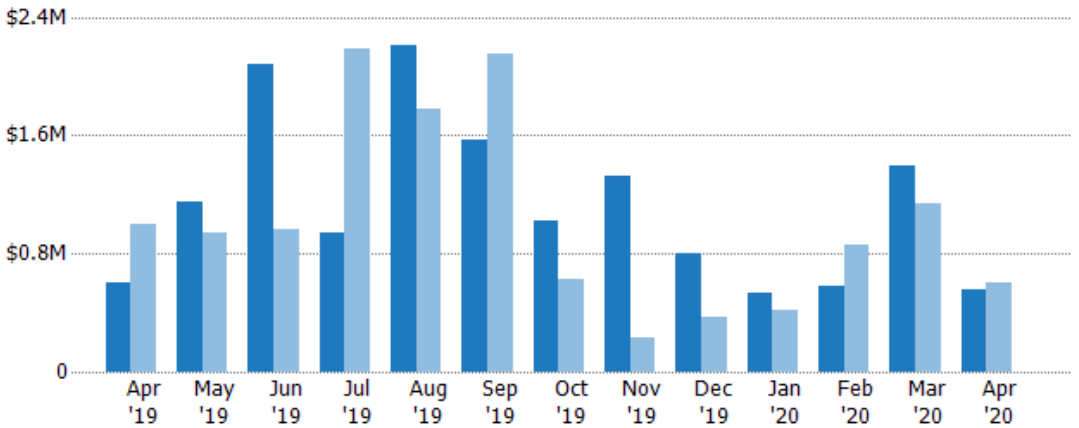
New Pending Sales Volume

The sum of the sales price of residential properties with accepted offers that were added each month.

Filters Used

ZIP: Newport, VT 05855
 Property Type:
 Condo/Townhouse/Apt, Single
 Family Residence

Month/Year	Volume	% Chg.
Apr '20	\$552K	-8.8%
Apr '19	\$605K	-39.4%
Apr '18	\$998K	-61.6%



	Apr '19	May '19	Jun '19	Jul '19	Aug '19	Sep '19	Oct '19	Nov '19	Dec '19	Jan '20	Feb '20	Mar '20	Apr '20
Current Year	\$605K	\$1.15M	\$2.08M	\$946K	\$2.2M	\$1.57M	\$1.02M	\$1.32M	\$804K	\$536K	\$578K	\$1.4M	\$552K
Prior Year	\$998K	\$942K	\$965K	\$2.18M	\$1.77M	\$2.15M	\$625K	\$235K	\$375K	\$418K	\$859K	\$1.14M	\$605K
Percent Change from Prior Year	-39%	22%	116%	-57%	24%	-27%	64%	461%	114%	28%	-33%	23%	-9%

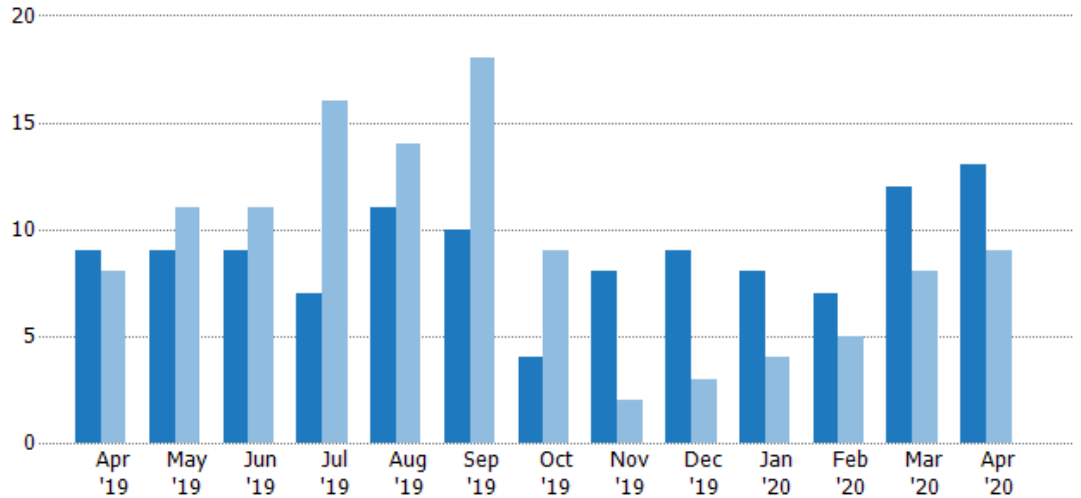
Pending Sales

The number of residential properties with accepted offers that were available at the end each month.

Filters Used

ZIP: Newport, VT 05855
 Property Type:
 Condo/Townhouse/Apt, Single
 Family Residence

Month/Year	Count	% Chg.
Apr '20	13	44.4%
Apr '19	9	12.5%
Apr '18	8	-25%



Current Year	9	9	9	7	11	10	4	8	9	8	7	12	13
Prior Year	8	11	11	16	14	18	9	2	3	4	5	8	9
Percent Change from Prior Year	13%	-18%	-18%	-56%	-21%	-44%	-56%	300%	200%	100%	40%	50%	44%

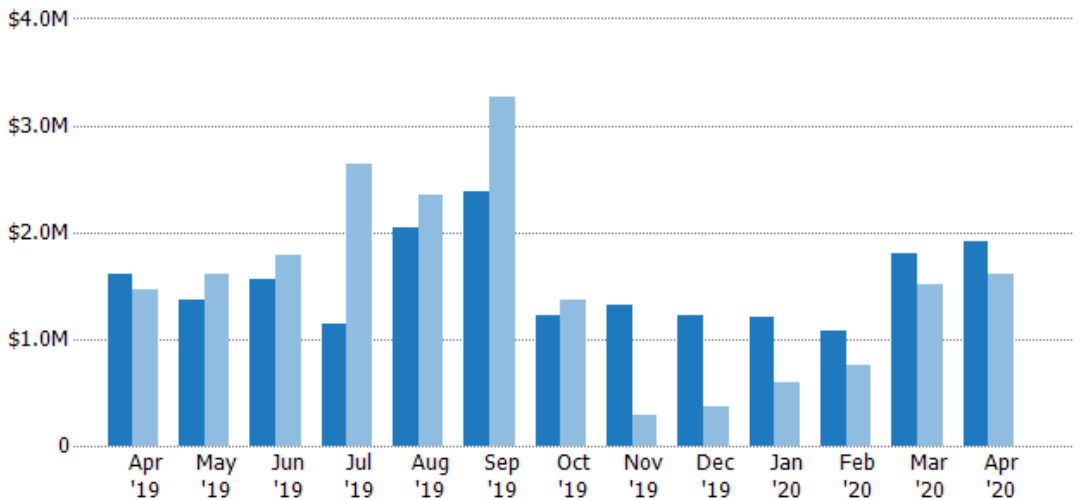
Pending Sales Volume

The sum of the sales price of residential properties with accepted offers that were available at the end of each month.

Filters Used

ZIP: Newport, VT 05855
 Property Type:
 Condo/Townhouse/Apt, Single
 Family Residence

Month/Year	Volume	% Chg.
Apr '20	\$1.91M	18.6%
Apr '19	\$1.61M	10.7%
Apr '18	\$1.46M	-44.7%



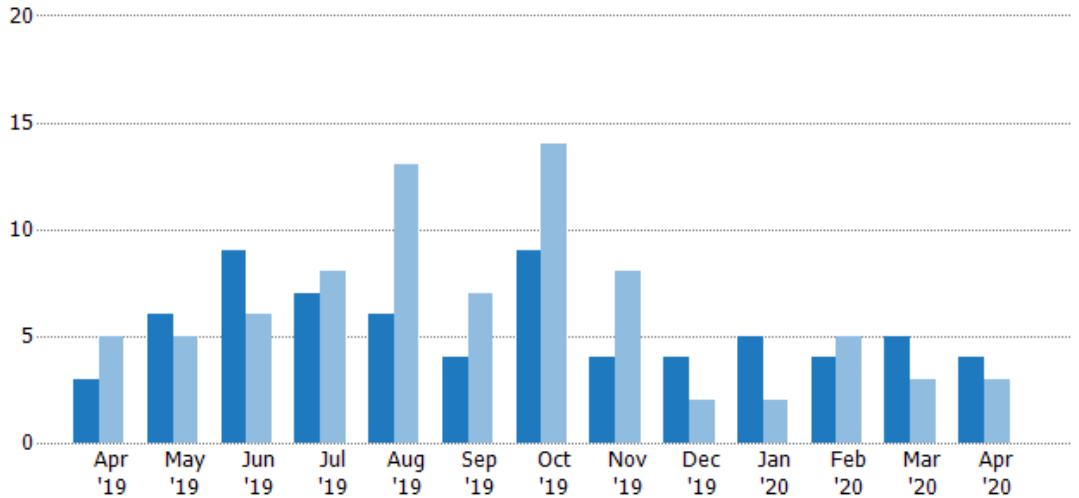
Current Year	\$1.61M	\$1.36M	\$1.56M	\$1.14M	\$2.05M	\$2.39M	\$1.22M	\$1.32M	\$1.21M	\$1.2M	\$1.07M	\$1.8M	\$1.91M
Prior Year	\$1.46M	\$1.61M	\$1.78M	\$2.64M	\$2.34M	\$3.27M	\$1.37M	\$282K	\$375K	\$597K	\$754K	\$1.51M	\$1.61M
Percent Change from Prior Year	11%	-15%	-12%	-57%	-12%	-27%	-11%	368%	223%	102%	42%	19%	19%

Closed Sales

The total number of residential properties sold each month.

Filters Used

ZIP: Newport, VT 05855
 Property Type:
 Condo/Townhouse/Apt, Single
 Family Residence



Month/Year	Count	% Chg.
Apr '20	4	33.3%
Apr '19	3	-40%
Apr '18	5	-40%

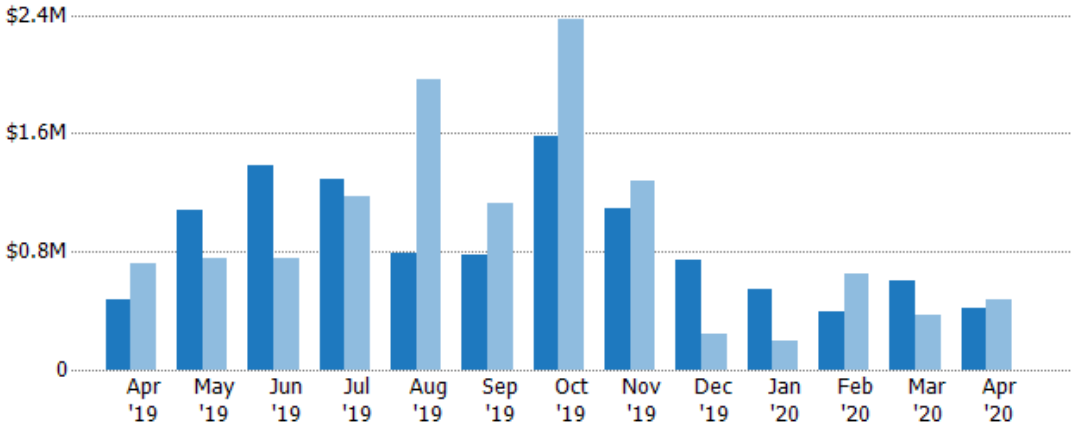
	Apr '19	May '19	Jun '19	Jul '19	Aug '19	Sep '19	Oct '19	Nov '19	Dec '19	Jan '20	Feb '20	Mar '20	Apr '20
Current Year	3	6	9	7	6	4	9	4	4	5	4	5	4
Prior Year	5	5	6	8	13	7	14	8	2	2	5	3	3
Percent Change from Prior Year	-40%	20%	50%	-13%	-54%	-43%	-36%	-50%	100%	150%	-20%	67%	33%

Closed Sales Volume

The sum of the sales price of residential properties sold each month.

Filters Used

ZIP: Newport, VT 05855
 Property Type:
 Condo/Townhouse/Apt, Single
 Family Residence



Month/Year	Volume	% Chg.
Apr '20	\$412K	-13.4%
Apr '19	\$476K	-33.8%
Apr '18	\$719K	-16.9%

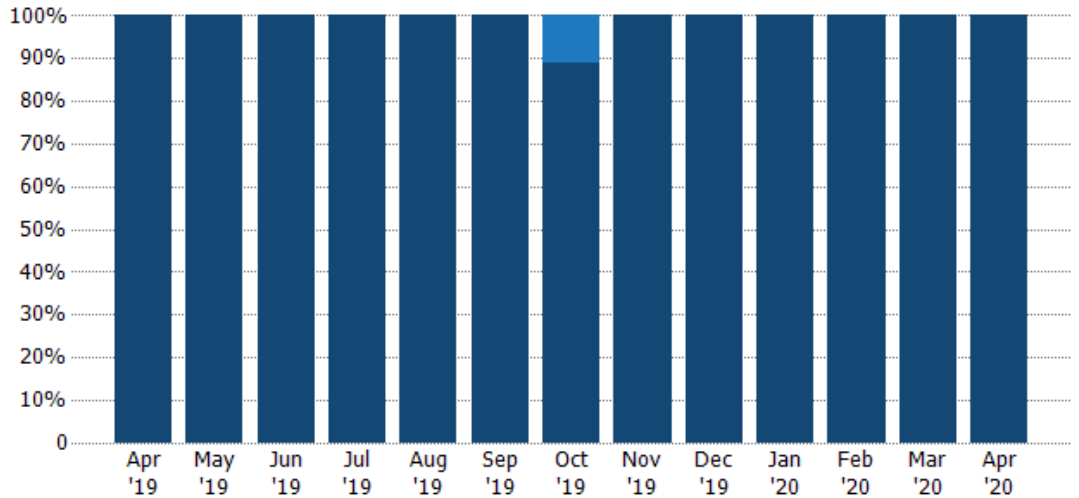
	Apr '19	May '19	Jun '19	Jul '19	Aug '19	Sep '19	Oct '19	Nov '19	Dec '19	Jan '20	Feb '20	Mar '20	Apr '20
Current Year	\$476K	\$1.08M	\$1.38M	\$1.29M	\$794K	\$781K	\$1.57M	\$1.09M	\$745K	\$543K	\$390K	\$606K	\$412K
Prior Year	\$719K	\$755K	\$750K	\$1.17M	\$1.97M	\$1.12M	\$2.37M	\$1.28M	\$240K	\$191K	\$648K	\$369K	\$476K
Percent Change from Prior Year	-34%	43%	84%	10%	-60%	-30%	-34%	-15%	210%	184%	-40%	64%	-13%

Closed Sales by Property Type

The percentage of residential properties sold each month by property type.

Filters Used

ZIP: Newport, VT 05855
 Property Type:
 Condo/Townhouse/Apt, Single
 Family Residence



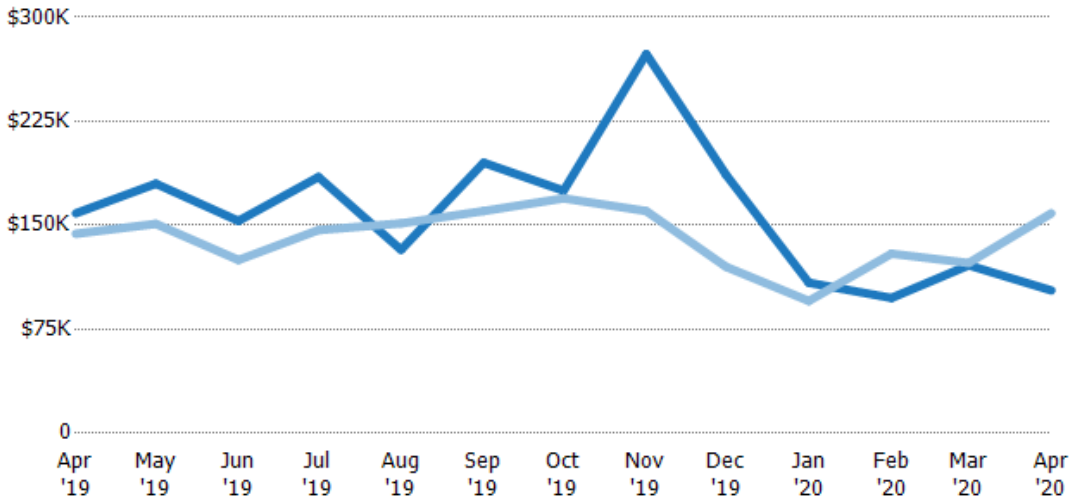
Condo/Townhouse	-	-	-	-	-	-	11%	-	-	-	-	-	-
Single Family Residence	100%	100%	100%	100%	100%	100%	89%	100%	100%	100%	100%	100%	100%

Average Sales Price

The average sales price of the residential properties sold each month.

Filters Used

ZIP: Newport, VT 05855
 Property Type:
 Condo/Townhouse/Apt, Single
 Family Residence



Current Year	\$159K	\$180K	\$153K	\$185K	\$132K	\$195K	\$175K	\$274K	\$186K	\$109K	\$97.6K	\$121K	\$103K
Prior Year	\$144K	\$151K	\$125K	\$147K	\$151K	\$160K	\$169K	\$160K	\$120K	\$95.5K	\$130K	\$123K	\$159K
Percent Change from Prior Year	10%	19%	23%	26%	-13%	22%	3%	71%	55%	14%	-25%	-1%	-35%

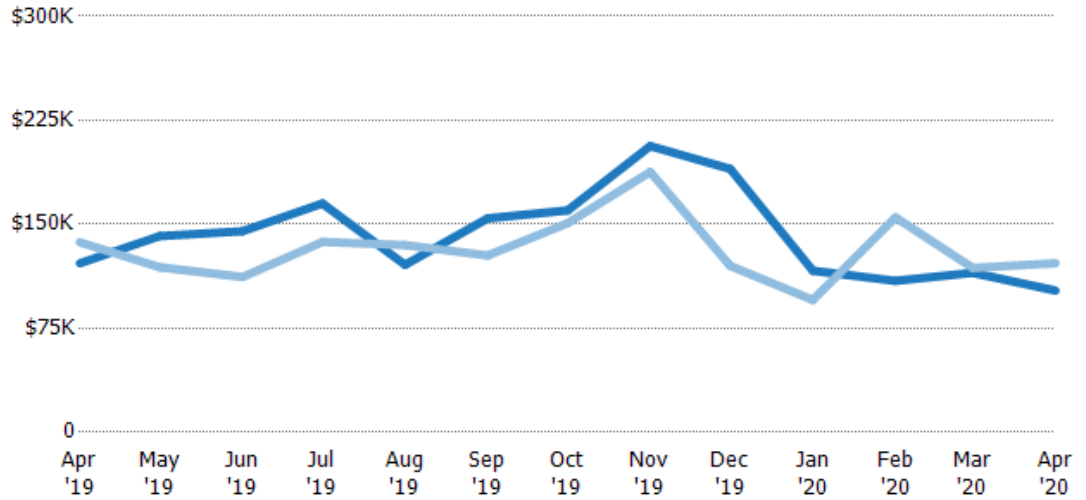
Median Sales Price

The median sales price of the residential properties sold each month.

Filters Used

ZIP: Newport, VT 05855
 Property Type:
 Condo/Townhouse/Apt, Single
 Family Residence

Month/Year	Price	% Chg.
Apr '20	\$102K	-16.2%
Apr '19	\$122K	-11%
Apr '18	\$137K	58.4%



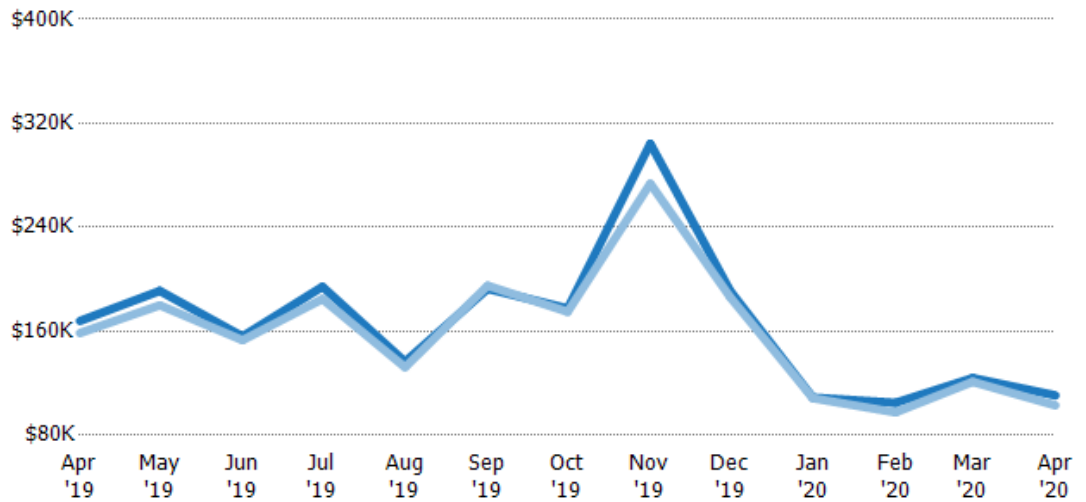
Current Year	\$122K	\$142K	\$145K	\$165K	\$121K	\$154K	\$160K	\$206K	\$190K	\$117K	\$109K	\$115K	\$102K
Prior Year	\$137K	\$119K	\$112K	\$137K	\$135K	\$128K	\$151K	\$188K	\$120K	\$95.5K	\$155K	\$119K	\$122K
Percent Change from Prior Year	-11%	19%	29%	20%	-11%	21%	6%	10%	58%	22%	-30%	-3%	-16%

Average Sales Price vs Average Listing Price

The average sales price as a percentage of the average listing price for properties sold each month.

Filters Used

ZIP: Newport, VT 05855
 Property Type:
 Condo/Townhouse/Apt, Single
 Family Residence



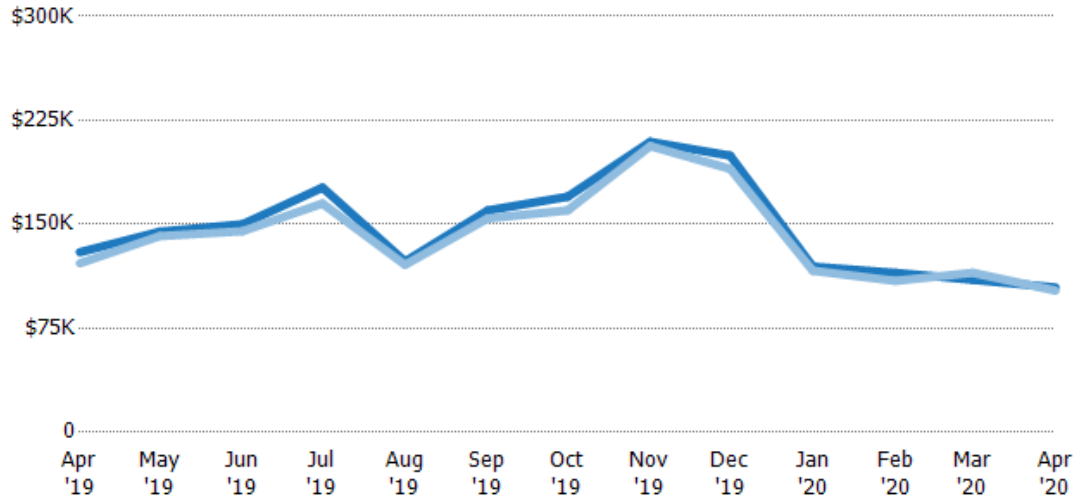
Avg List Price	\$168K	\$191K	\$156K	\$194K	\$137K	\$193K	\$178K	\$304K	\$191K	\$109K	\$105K	\$124K	\$111K
Avg Sales Price	\$159K	\$180K	\$153K	\$185K	\$132K	\$195K	\$175K	\$274K	\$186K	\$109K	\$97.6K	\$121K	\$103K
Avg Sales Price as a % of Avg List Price	94%	94%	98%	95%	97%	101%	99%	90%	98%	100%	93%	98%	93%

Median Sales Price vs Median Listing Price

The median sales price as a percentage of the median listing price for properties sold each month.

Filters Used

ZIP: Newport, VT 05855
 Property Type:
 Condo/Townhouse/Apt, Single
 Family Residence



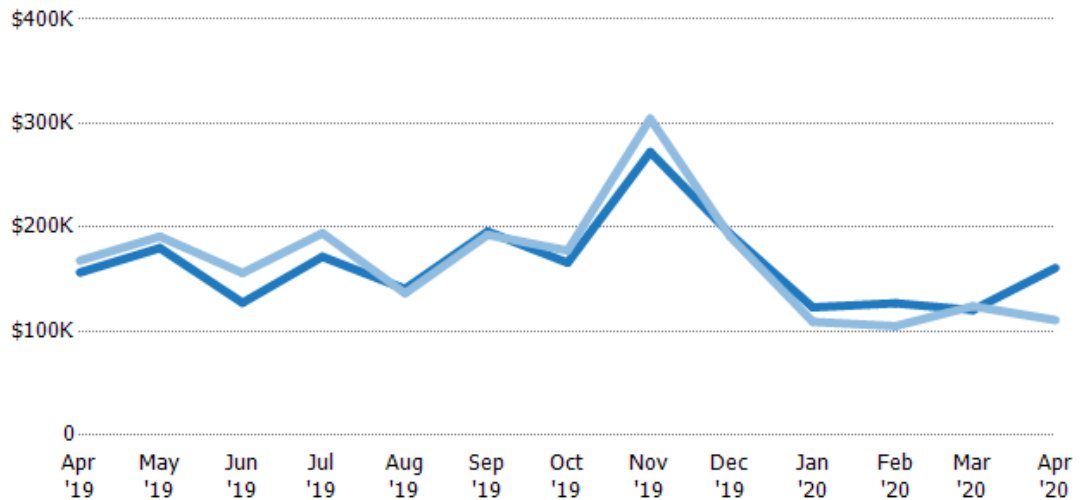
	Apr '19	May '19	Jun '19	Jul '19	Aug '19	Sep '19	Oct '19	Nov '19	Dec '19	Jan '20	Feb '20	Mar '20	Apr '20
Median List Price	\$130K	\$145K	\$150K	\$177K	\$123K	\$160K	\$170K	\$209K	\$200K	\$120K	\$115K	\$110K	\$104K
Median Sales Price	\$122K	\$142K	\$145K	\$165K	\$121K	\$154K	\$160K	\$206K	\$190K	\$117K	\$109K	\$115K	\$102K
Med Sales Price as a % of Med List Price	94%	98%	97%	93%	98%	96%	94%	99%	95%	97%	95%	105%	98%

Average Sales Price vs Average Est Value

The average sales price as a percentage of the average AVM or RVM® valuation estimate for properties sold each month.

Filters Used

ZIP: Newport, VT 05855
 Property Type:
 Condo/Townhouse/Apt, Single
 Family Residence



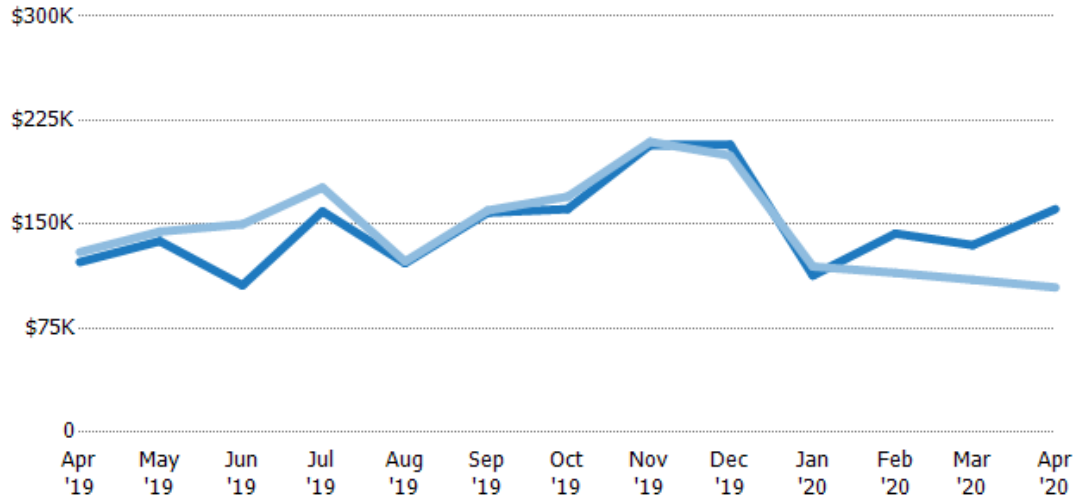
	Apr '19	May '19	Jun '19	Jul '19	Aug '19	Sep '19	Oct '19	Nov '19	Dec '19	Jan '20	Feb '20	Mar '20	Apr '20
Avg Est Value	\$157K	\$180K	\$127K	\$172K	\$141K	\$196K	\$166K	\$272K	\$194K	\$123K	\$127K	\$120K	\$161K
Avg Sales Price	\$168K	\$191K	\$156K	\$194K	\$137K	\$193K	\$178K	\$304K	\$191K	\$109K	\$105K	\$124K	\$111K
Avg Sales Price as a % of Avg Est Value	107%	106%	123%	113%	97%	98%	107%	112%	99%	89%	83%	103%	69%

Median Sales Price vs Median Est Value

The median sales price as a percent of the median AVM or RVM® valuation estimate for properties sold each month.

Filters Used

ZIP: Newport, VT 05855
 Property Type:
 Condo/Townhouse/Apt, Single
 Family Residence



	Apr '19	May '19	Jun '19	Jul '19	Aug '19	Sep '19	Oct '19	Nov '19	Dec '19	Jan '20	Feb '20	Mar '20	Apr '20
Median Est Value	\$123K	\$138K	\$106K	\$159K	\$122K	\$158K	\$161K	\$207K	\$207K	\$113K	\$143K	\$135K	\$161K
Median Sales Price	\$130K	\$145K	\$150K	\$177K	\$123K	\$160K	\$170K	\$209K	\$200K	\$120K	\$115K	\$110K	\$104K
Med Sales Price as a % of Med Est Value	106%	105%	142%	111%	101%	101%	106%	101%	96%	106%	80%	81%	65%