

## Summary of Key Listing and Sales Metrics

A summary of the key metrics selected to be included in the report. MLS sources where licensed.

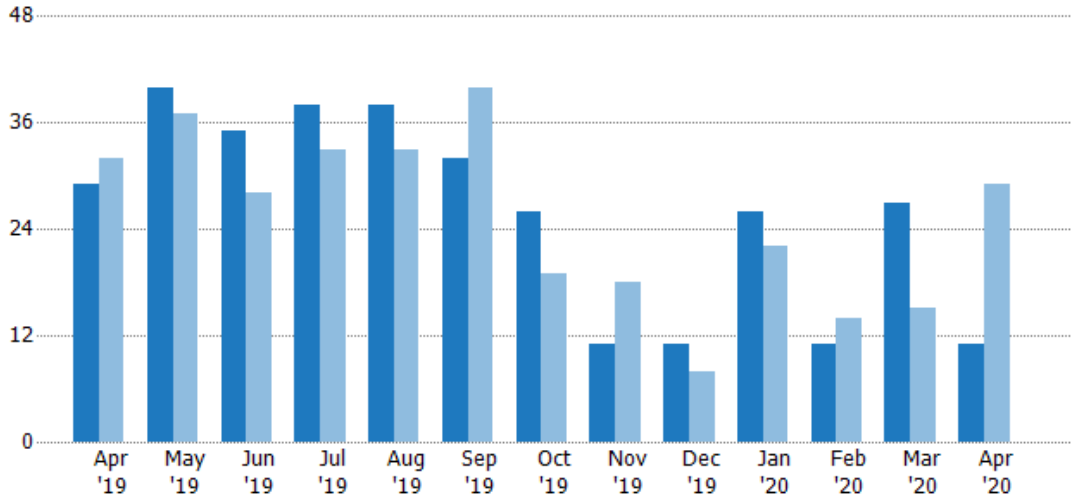
Key Metrics	Apr 2020	Apr 2019	+ / -	YTD 2020	YTD 2019	+ / -
<b>Listing Activity Charts Metrics</b>						
New Listing Count	11	29	-62.1%	75	80	-6.3%
New Listing Volume	\$3,568,700	\$8,423,600	-57.6%	\$25,036,000	\$24,585,990	+1.8%
Active Listing Count	42	60	-30%	N/A	N/A	
Active Listing Volume	\$16,821,950	\$22,813,139	-26.3%	N/A	N/A	
Average Listing Price	\$400,523	\$380,219	+5.3%	\$379,343	\$371,189	+2.2%
Median Listing Price	\$385,875	\$363,825	+6.1%	\$376,627	\$358,956	+4.9%
Median Days in RPR	74	171.5	-56.9%	91.17	158.42	-42.5%
Months of Inventory	2.5	3.2	-21.8%	3.1	4.3	-28.3%
Absorption Rate	40.48%	31.67%	+8.8%	32.57%	23.36%	+9.2%
<b>Sales Activity Charts Metrics</b>						
New Pending Sales Count	13	32	-59.4%	75	80	-6.3%
New Pending Sales Volume	\$4,126,250	\$10,111,727	-59.2%	\$21,862,688	\$24,787,367	-11.8%
Pending Sales Count	24	46	-47.8%	N/A	N/A	
Pending Sales Volume	\$7,488,389	\$14,956,867	-49.9%	N/A	N/A	
Closed Sales Count	15	12	+25%	66	57	+15.8%
Closed Sales Volume	\$4,499,905	\$3,605,467	+24.8%	\$20,087,051	\$18,475,364	+8.7%
Average Sales Price	\$299,994	\$300,456	-0.2%	\$304,349	\$324,129	-6.1%
Median Sales Price	\$355,000	\$309,750	+14.6%	\$298,523	\$294,414	+1.4%

## New Listings

The number of new residential listings that were added each month.

### Filters Used

ZIP: Essex, VT 05451, Essex Junction, VT 05452, Essex Junction, VT 05453  
 Property Type: Condo/Townhouse/Apt, Single Family Residence



Month/Year	Count	% Chg.
Apr '20	11	-62.1%
Apr '19	29	-9.4%
Apr '18	32	-12.5%

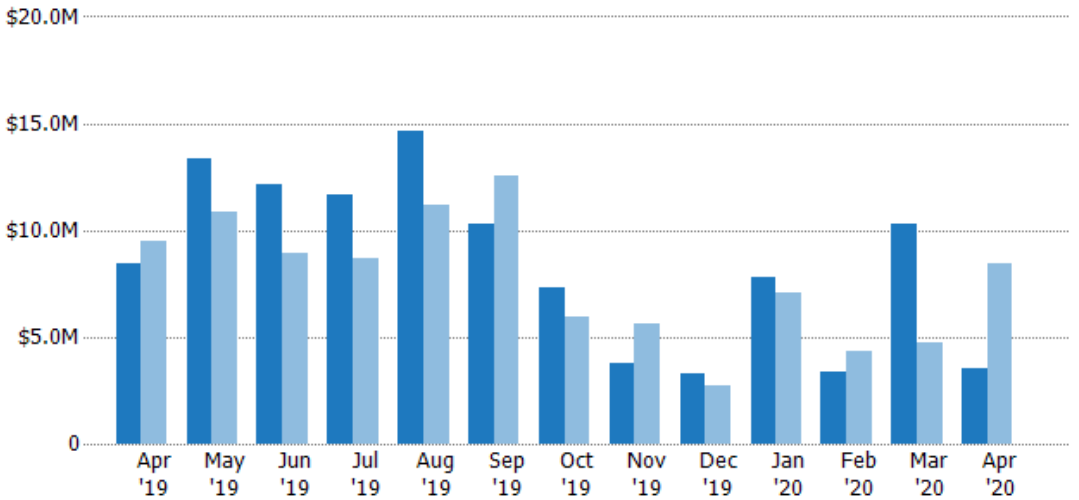
Current Year	29	40	35	38	38	32	26	11	11	26	11	27	11
Prior Year	32	37	28	33	33	40	19	18	8	22	14	15	29
Percent Change from Prior Year	-9%	8%	25%	15%	15%	-20%	37%	-39%	38%	18%	-21%	80%	-62%

## New Listing Volume

The sum of the listing price of residential listings that were added each month.

### Filters Used

ZIP: Essex, VT 05451, Essex Junction, VT 05452, Essex Junction, VT 05453  
 Property Type: Condo/Townhouse/Apt, Single Family Residence



Month/Year	Volume	% Chg.
Apr '20	\$3.57M	-57.6%
Apr '19	\$8.42M	-11.2%
Apr '18	\$9.49M	-8.7%

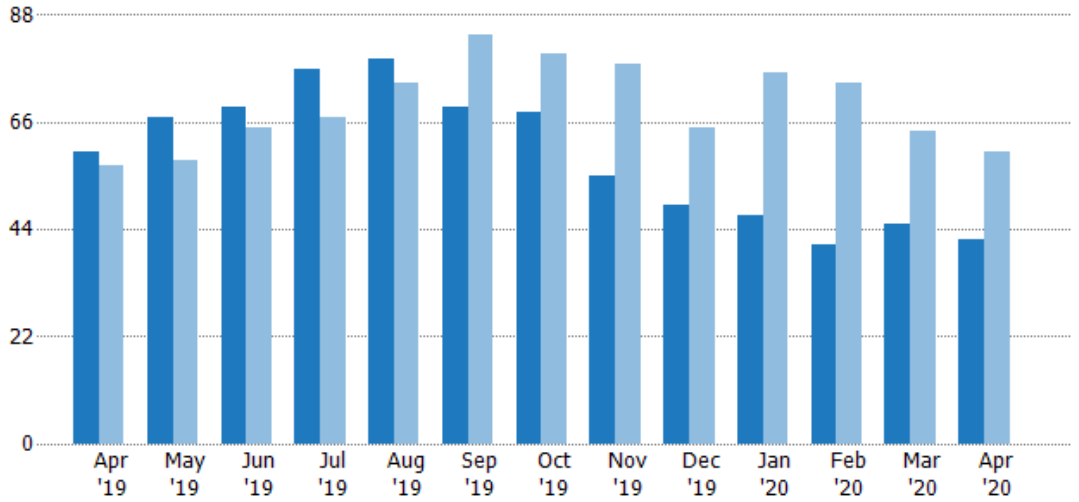
Current Year	\$8.42M	\$13.4M	\$12.2M	\$11.6M	\$14.6M	\$10.3M	\$7.35M	\$3.81M	\$3.3M	\$7.78M	\$3.4M	\$10.3M	\$3.57M
Prior Year	\$9.49M	\$10.8M	\$8.91M	\$8.69M	\$11.2M	\$12.5M	\$5.96M	\$5.6M	\$2.7M	\$7.1M	\$4.35M	\$4.72M	\$8.42M
Percent Change from Prior Year	-11%	24%	37%	34%	31%	-18%	23%	-32%	22%	10%	-22%	118%	-58%

## Active Listings

The number of active residential listings at the end of each month.

### Filters Used

ZIP: Essex, VT 05451, Essex Junction, VT 05452, Essex Junction, VT 05453  
 Property Type: Condo/Townhouse/Apt, Single Family Residence



Month/Year	Count	% Chg.
Apr '20	42	-30%
Apr '19	60	5.3%
Apr '18	57	12.3%

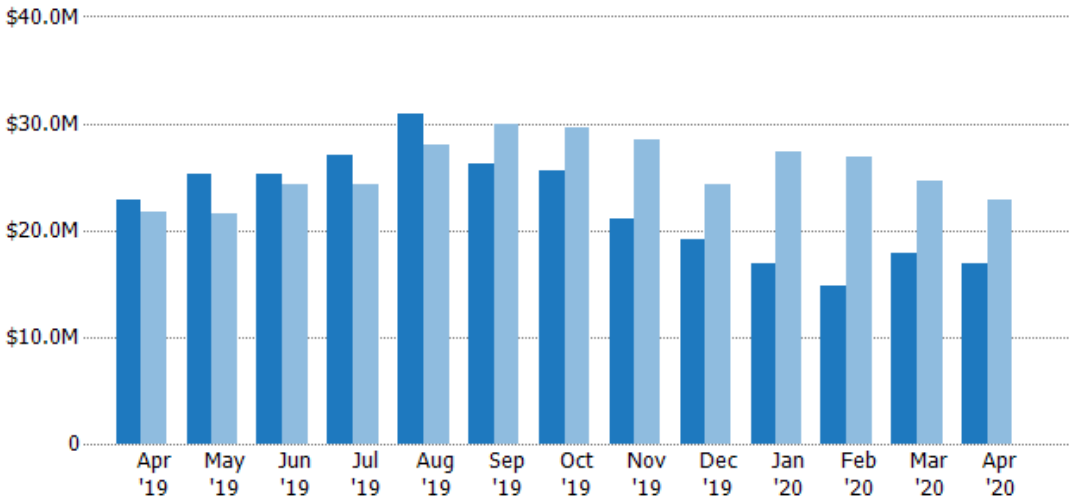
Current Year	60	67	69	77	79	69	68	55	49	47	41	45	42
Prior Year	57	58	65	67	74	84	80	78	65	76	74	64	60
Percent Change from Prior Year	5%	16%	6%	15%	7%	-18%	-15%	-29%	-25%	-38%	-45%	-30%	-30%

## Active Listing Volume

The sum of the listing price of active residential listings at the end of each month.

### Filters Used

ZIP: Essex, VT 05451, Essex Junction, VT 05452, Essex Junction, VT 05453  
 Property Type: Condo/Townhouse/Apt, Single Family Residence



Month/Year	Volume	% Chg.
Apr '20	\$16.8M	-26.3%
Apr '19	\$22.8M	5.3%
Apr '18	\$21.7M	7%

Current Year	\$22.8M	\$25.2M	\$25.3M	\$27M	\$30.9M	\$26.3M	\$25.6M	\$21.1M	\$19.1M	\$16.9M	\$14.8M	\$17.9M	\$16.8M
Prior Year	\$21.7M	\$21.6M	\$24.3M	\$24.3M	\$28M	\$29.9M	\$29.6M	\$28.5M	\$24.2M	\$27.4M	\$26.9M	\$24.6M	\$22.8M
Percent Change from Prior Year	5%	16%	4%	11%	10%	-12%	-14%	-26%	-21%	-38%	-45%	-28%	-26%

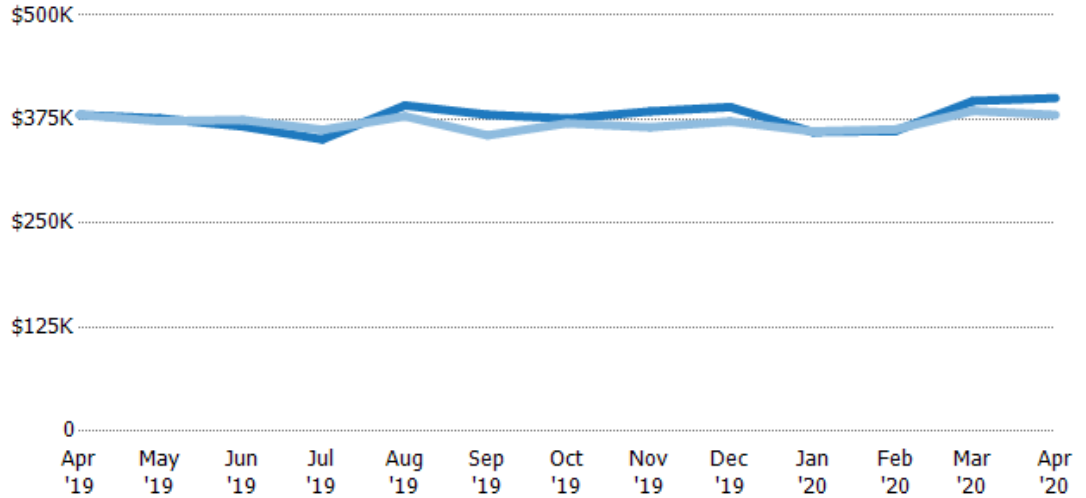
## Average Listing Price

The average listing price of active residential listings at the end of each month.

### Filters Used

ZIP: Essex, VT 05451, Essex Junction, VT 05452, Essex Junction, VT 05453  
 Property Type: Condo/Townhouse/Apt, Single Family Residence

Month/Year	Price	% Chg.
Apr '20	\$401K	5.3%
Apr '19	\$380K	-
Apr '18	\$380K	-4.7%



Current Year	\$380K	\$376K	\$366K	\$351K	\$392K	\$380K	\$376K	\$384K	\$390K	\$360K	\$361K	\$397K	\$401K
Prior Year	\$380K	\$373K	\$374K	\$362K	\$379K	\$356K	\$370K	\$365K	\$372K	\$360K	\$363K	\$385K	\$380K
Percent Change from Prior Year	0	1%	-2%	-3%	3%	7%	2%	5%	5%	0%	-1%	3%	5%

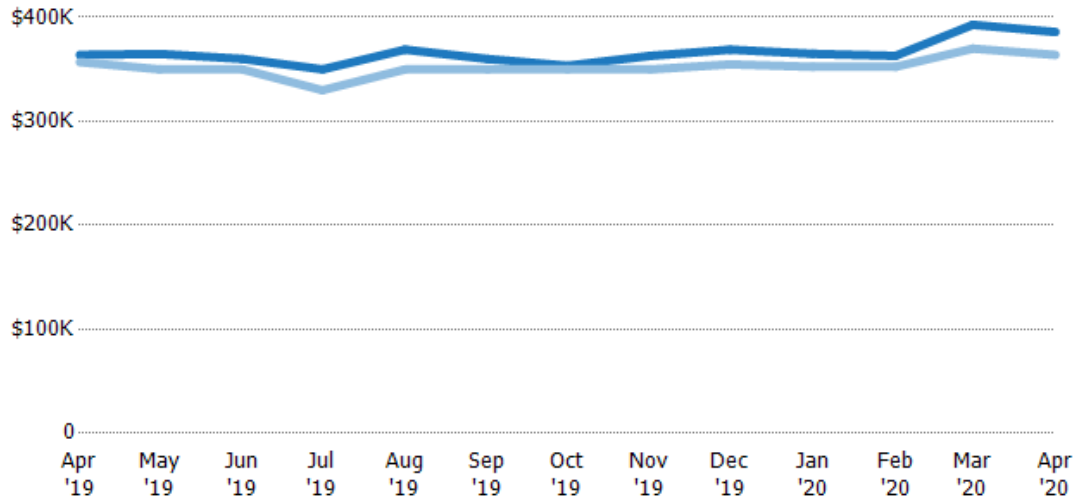
## Median Listing Price

The median listing price of active residential listings at the end of each month.

### Filters Used

ZIP: Essex, VT 05451, Essex Junction, VT 05452, Essex Junction, VT 05453  
 Property Type: Condo/Townhouse/Apt, Single Family Residence

Month/Year	Price	% Chg.
Apr '20	\$386K	6.1%
Apr '19	\$364K	1.9%
Apr '18	\$357K	-1.6%



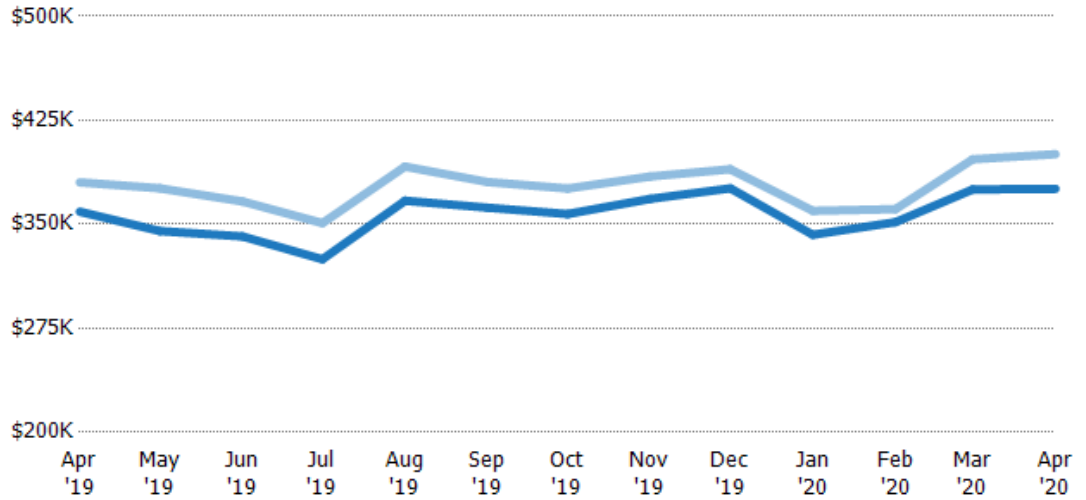
Current Year	\$364K	\$365K	\$360K	\$350K	\$369K	\$360K	\$353K	\$363K	\$369K	\$365K	\$363K	\$393K	\$386K
Prior Year	\$357K	\$350K	\$350K	\$330K	\$350K	\$350K	\$350K	\$350K	\$355K	\$352K	\$352K	\$370K	\$364K
Percent Change from Prior Year	2%	4%	3%	6%	5%	3%	1%	4%	4%	4%	3%	6%	6%

## Average Listing Price vs Average Est Value

The average listing price as a percentage of the average AVM or RVM® valuation estimate for active listings each month.

### Filters Used

ZIP: Essex, VT 05451, Essex Junction, VT 05452, Essex Junction, VT 05453  
 Property Type: Condo/Townhouse/Apt, Single Family Residence



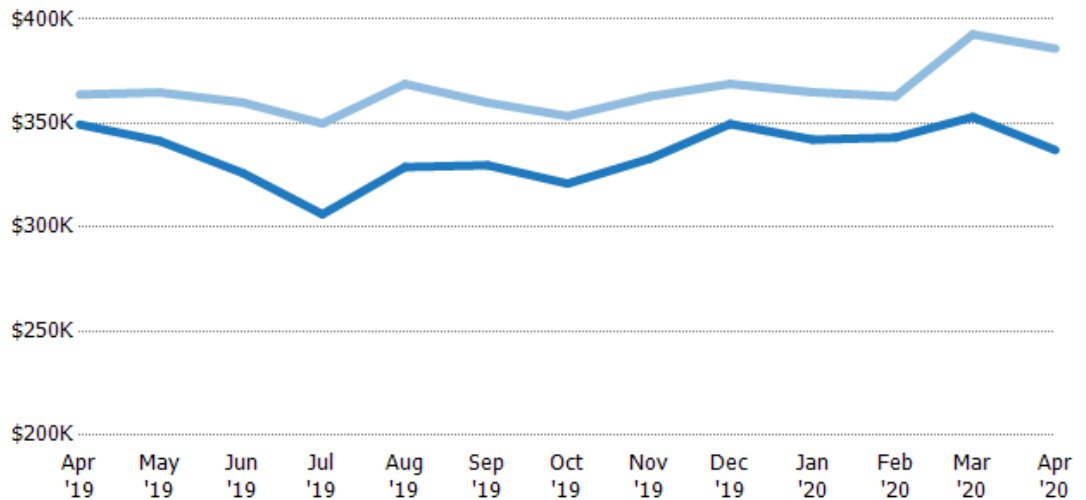
	Apr '19	May '19	Jun '19	Jul '19	Aug '19	Sep '19	Oct '19	Nov '19	Dec '19	Jan '20	Feb '20	Mar '20	Apr '20
Avg Est Value	\$359K	\$345K	\$341K	\$325K	\$367K	\$362K	\$357K	\$368K	\$376K	\$342K	\$352K	\$375K	\$376K
Avg Listing Price	\$380K	\$376K	\$366K	\$351K	\$392K	\$380K	\$376K	\$384K	\$390K	\$360K	\$361K	\$397K	\$401K
Avg Listing Price as a % of Avg Est Value	106%	109%	107%	108%	107%	105%	105%	104%	104%	105%	103%	106%	107%

## Median Listing Price vs Median Est Value

The median listing price as a percentage of the median AVM or RVM® valuation estimate for active listings each month.

### Filters Used

ZIP: Essex, VT 05451, Essex Junction, VT 05452, Essex Junction, VT 05453  
 Property Type: Condo/Townhouse/Apt, Single Family Residence



	Apr '19	May '19	Jun '19	Jul '19	Aug '19	Sep '19	Oct '19	Nov '19	Dec '19	Jan '20	Feb '20	Mar '20	Apr '20
Median Est Value	\$349K	\$341K	\$326K	\$306K	\$329K	\$330K	\$321K	\$333K	\$350K	\$342K	\$343K	\$353K	\$337K
Median Listing Price	\$364K	\$365K	\$360K	\$350K	\$369K	\$360K	\$353K	\$363K	\$369K	\$365K	\$363K	\$393K	\$386K
Med Listing Price as a % of Med Est Value	104%	107%	110%	114%	112%	109%	110%	109%	106%	107%	106%	111%	114%

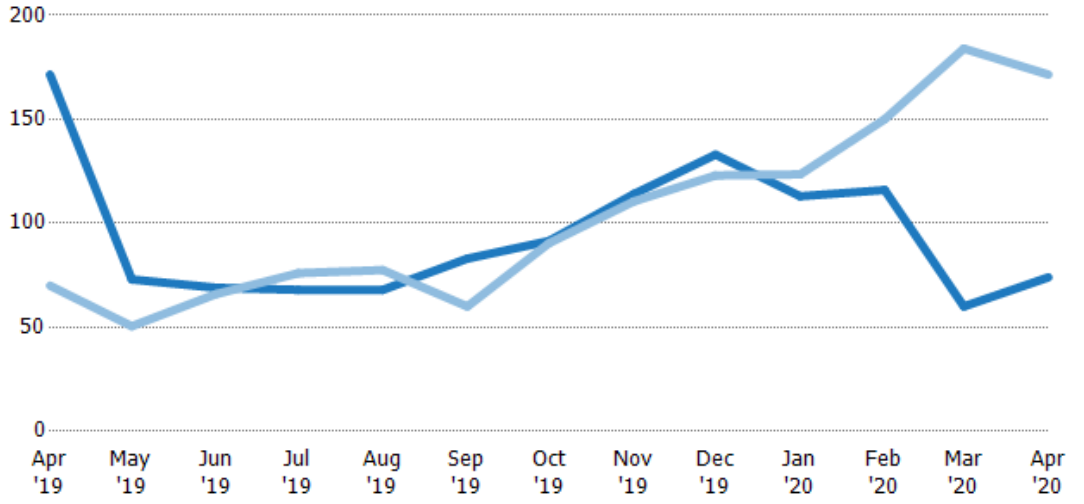
## Median Days in RPR

The median number of days between when residential properties are first displayed as active listings in RPR and when accepted offers have been noted in RPR.

### Filters Used

ZIP: Essex, VT 05451, Essex Junction, VT 05452, Essex Junction, VT 05453  
 Property Type: Condo/Townhouse/Apt, Single Family Residence

Month/Year	Days	% Chg.
Apr '20	74	-56.9%
Apr '19	172	145%
Apr '18	70	19.3%



	Apr '19	May '19	Jun '19	Jul '19	Aug '19	Sep '19	Oct '19	Nov '19	Dec '19	Jan '20	Feb '20	Mar '20	Apr '20
Current Year	172	73	69	68	68	83	91.5	114	133	113	116	60	74
Prior Year	70	50.5	66	76	77.5	60	90.5	111	123	124	150	184	172
Percent Change from Prior Year	145%	45%	5%	-11%	-12%	38%	1%	3%	8%	-9%	-23%	-67%	-57%

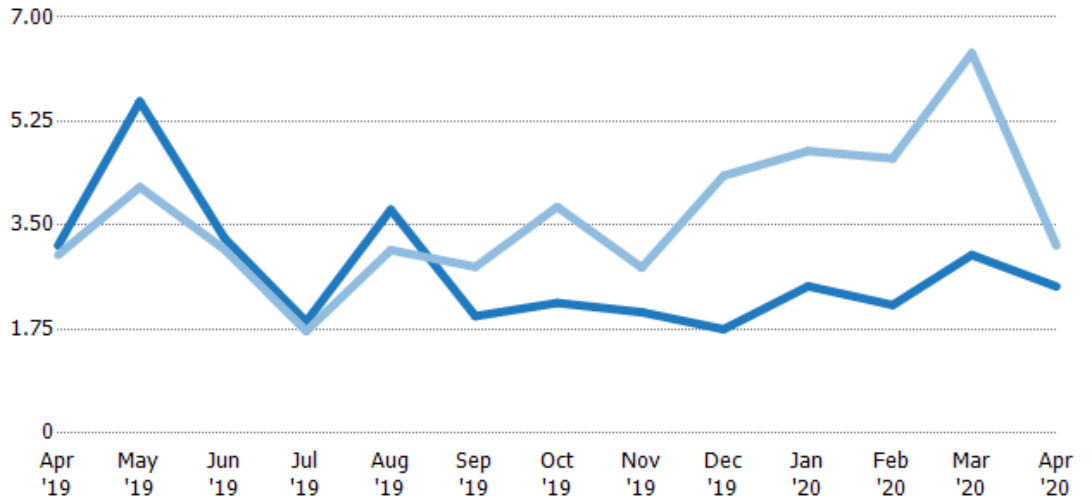
## Months of Inventory

The number of months it would take to exhaust active listings at the current sales rate.

### Filters Used

ZIP: Essex, VT 05451, Essex Junction, VT 05452, Essex Junction, VT 05453  
 Property Type: Condo/Townhouse/Apt, Single Family Residence

Month/Year	Months	% Chg.
Apr '20	2.47	-21.8%
Apr '19	3.16	5.3%
Apr '18	3	12.3%



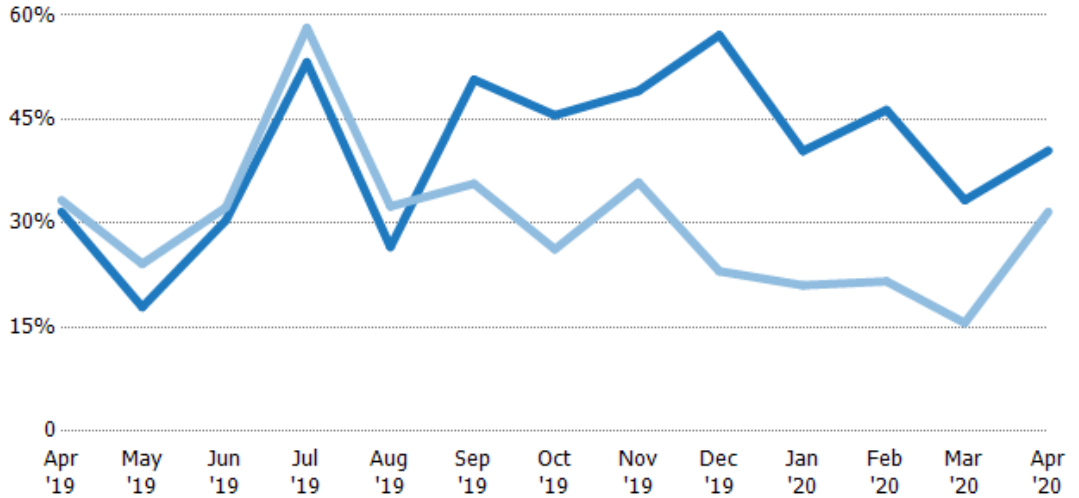
	Apr '19	May '19	Jun '19	Jul '19	Aug '19	Sep '19	Oct '19	Nov '19	Dec '19	Jan '20	Feb '20	Mar '20	Apr '20
Current Year	3.16	5.58	3.29	1.88	3.76	1.97	2.19	2.04	1.75	2.47	2.16	3	2.47
Prior Year	3	4.14	3.1	1.72	3.08	2.8	3.81	2.79	4.33	4.75	4.63	6.4	3.16
Percent Change from Prior Year	5%	35%	6%	9%	22%	-30%	-42%	-27%	-60%	-48%	-53%	-53%	-22%

## Absorption Rate

The percentage of inventory sold per month.

### Filters Used

ZIP: Essex, VT 05451, Essex Junction, VT 05452, Essex Junction, VT 05453  
 Property Type: Condo/Townhouse/Apt, Single Family Residence



Month/Year	Rate	Chg.
Apr '20	40%	-8.8%
Apr '19	32%	1.7%
Apr '18	33%	-11%

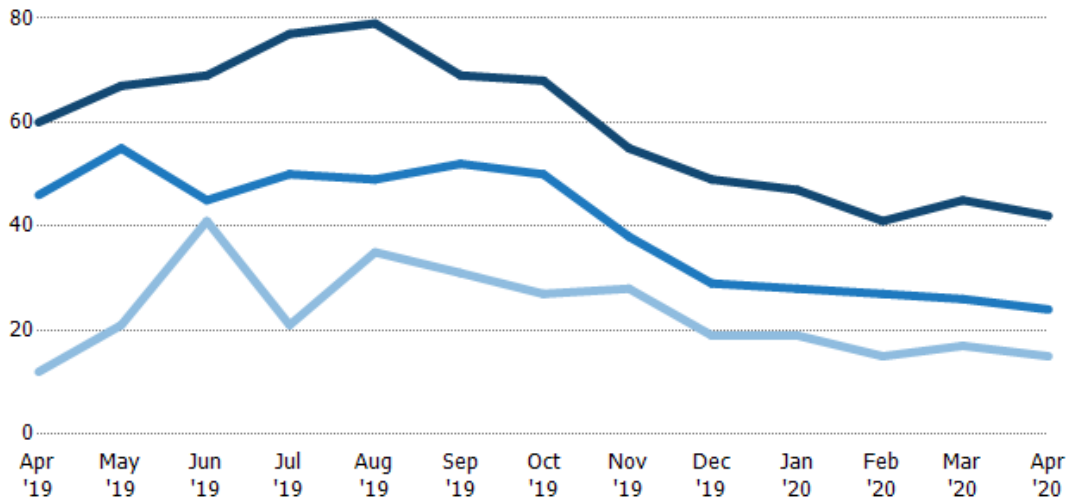
	Apr '19	May '19	Jun '19	Jul '19	Aug '19	Sep '19	Oct '19	Nov '19	Dec '19	Jan '20	Feb '20	Mar '20	Apr '20
Current Year	32%	18%	30%	53%	27%	51%	46%	49%	57%	40%	46%	33%	40%
Prior Year	33%	24%	32%	58%	32%	36%	26%	36%	23%	21%	22%	16%	32%
Change from Prior Year	2%	6%	2%	5%	6%	-15%	-19%	-13%	-34%	-19%	-25%	-18%	-9%

## Active/Pending/Sold Units

The number of residential properties that were Active, Pending and Sold each month.

### Filters Used

ZIP: Essex, VT 05451, Essex Junction, VT 05452, Essex Junction, VT 05453  
 Property Type: Condo/Townhouse/Apt, Single Family Residence



	Apr '19	May '19	Jun '19	Jul '19	Aug '19	Sep '19	Oct '19	Nov '19	Dec '19	Jan '20	Feb '20	Mar '20	Apr '20
Active	60	67	69	77	79	69	68	55	49	47	41	45	42
Pending	46	55	45	50	49	52	50	38	29	28	27	26	24
Sold	12	21	41	21	35	31	27	28	19	19	15	17	15

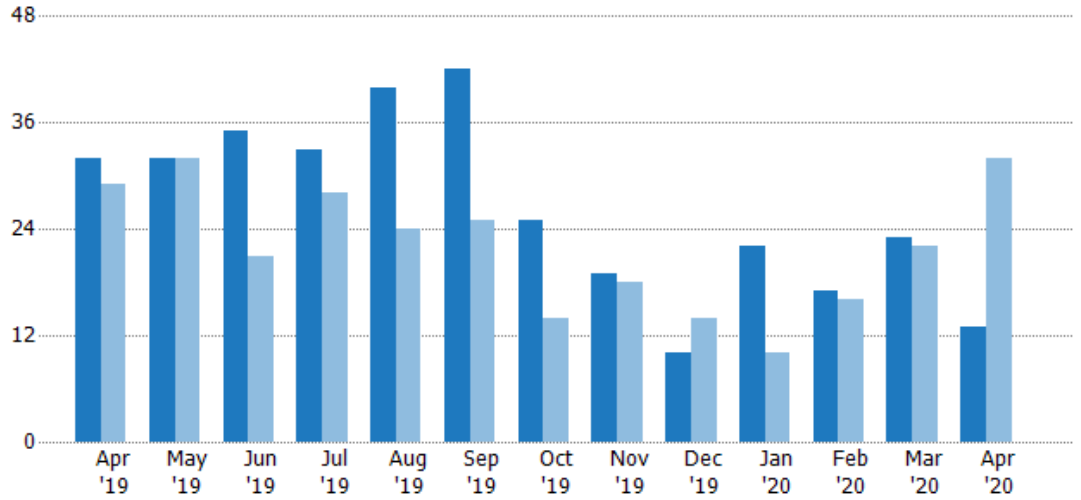
## New Pending Sales

The number of residential properties with accepted offers that were added each month.

### Filters Used

ZIP: Essex, VT 05451, Essex Junction, VT 05452, Essex Junction, VT 05453  
 Property Type: Condo/Townhouse/Apt, Single Family Residence

Month/Year	Count	% Chg.
Apr '20	13	-59.4%
Apr '19	32	10.3%
Apr '18	29	-41.4%



Current Year	32	32	35	33	40	42	25	19	10	22	17	23	13
Prior Year	29	32	21	28	24	25	14	18	14	10	16	22	32
Percent Change from Prior Year	10%	0%	67%	18%	67%	68%	79%	6%	-29%	120%	6%	5%	-59%

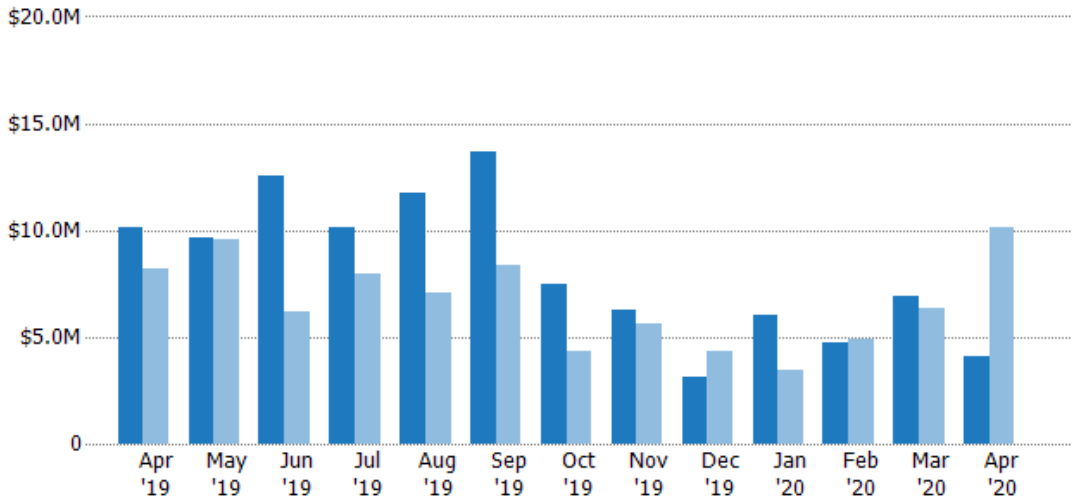
## New Pending Sales Volume

The sum of the sales price of residential properties with accepted offers that were added each month.

### Filters Used

ZIP: Essex, VT 05451, Essex Junction, VT 05452, Essex Junction, VT 05453  
 Property Type: Condo/Townhouse/Apt, Single Family Residence

Month/Year	Volume	% Chg.
Apr '20	\$4.13M	-59.2%
Apr '19	\$10.1M	23.7%
Apr '18	\$8.18M	-36.5%



Current Year	\$10.1M	\$9.65M	\$12.5M	\$10.2M	\$11.7M	\$13.7M	\$7.48M	\$6.3M	\$3.09M	\$6.03M	\$4.76M	\$6.95M	\$4.13M
Prior Year	\$8.18M	\$9.55M	\$6.2M	\$7.98M	\$7.1M	\$8.35M	\$4.37M	\$5.59M	\$4.34M	\$3.49M	\$4.87M	\$6.32M	\$10.1M
Percent Change from Prior Year	24%	1%	102%	27%	65%	64%	71%	13%	-29%	73%	-2%	10%	-59%



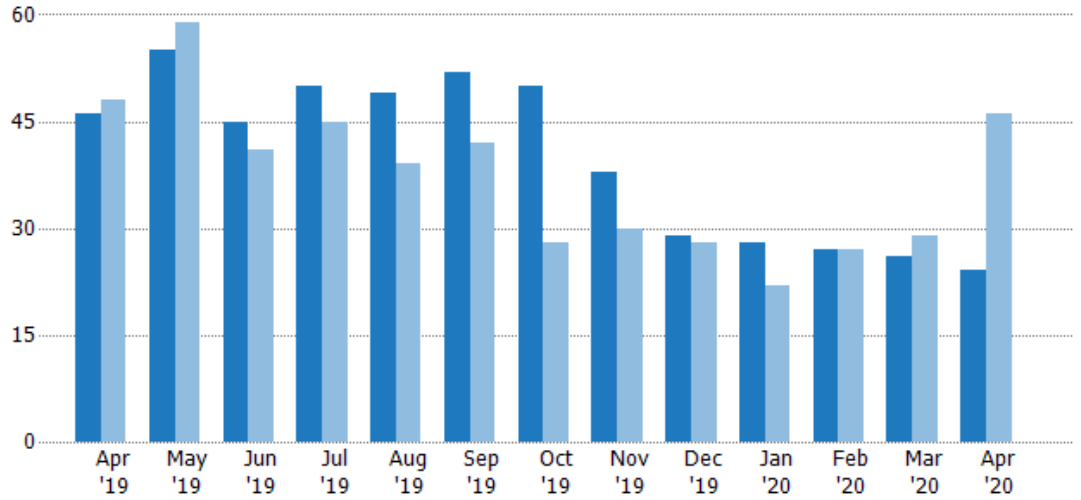
## Pending Sales

The number of residential properties with accepted offers that were available at the end each month.

### Filters Used

ZIP: Essex, VT 05451, Essex Junction, VT 05452, Essex Junction, VT 05453  
 Property Type: Condo/Townhouse/Apt, Single Family Residence

Month/Year	Count	% Chg.
Apr '20	24	-47.8%
Apr '19	46	-4.2%
Apr '18	48	-4.2%



Current Year	46	55	45	50	49	52	50	38	29	28	27	26	24
Prior Year	48	59	41	45	39	42	28	30	28	22	27	29	46
Percent Change from Prior Year	-4%	-7%	10%	11%	26%	24%	79%	27%	4%	27%	0%	-10%	-48%

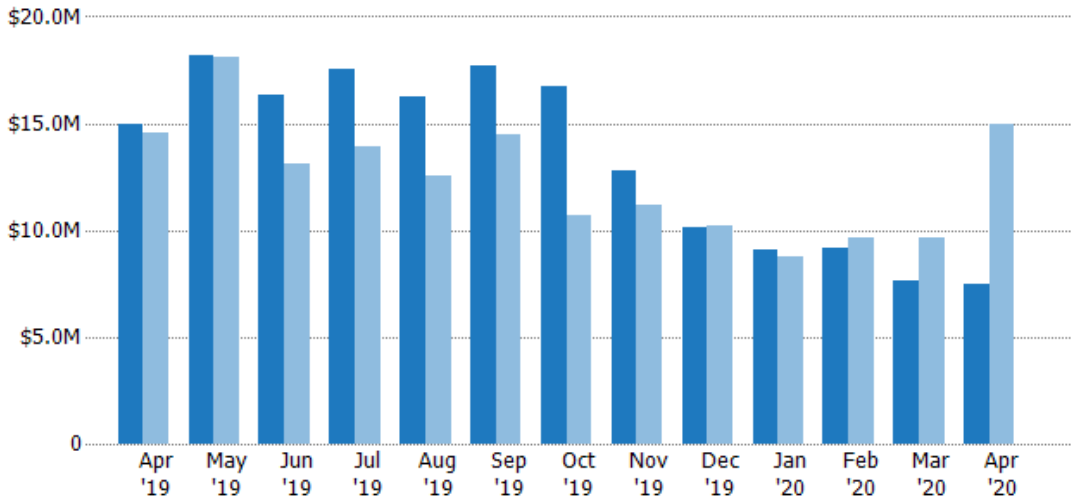
## Pending Sales Volume

The sum of the sales price of residential properties with accepted offers that were available at the end of each month.

### Filters Used

ZIP: Essex, VT 05451, Essex Junction, VT 05452, Essex Junction, VT 05453  
 Property Type: Condo/Townhouse/Apt, Single Family Residence

Month/Year	Volume	% Chg.
Apr '20	\$7.49M	-49.9%
Apr '19	\$15M	3%
Apr '18	\$14.5M	1%



Current Year	\$15M	\$18.2M	\$16.3M	\$17.5M	\$16.3M	\$17.7M	\$16.8M	\$12.8M	\$10.1M	\$9.11M	\$9.18M	\$7.66M	\$7.49M
Prior Year	\$14.5M	\$18.1M	\$13.1M	\$13.9M	\$12.5M	\$14.5M	\$10.7M	\$11.1M	\$10.2M	\$8.79M	\$9.68M	\$9.61M	\$15M
Percent Change from Prior Year	3%	1%	24%	26%	30%	22%	57%	15%	-1%	4%	-5%	-20%	-50%

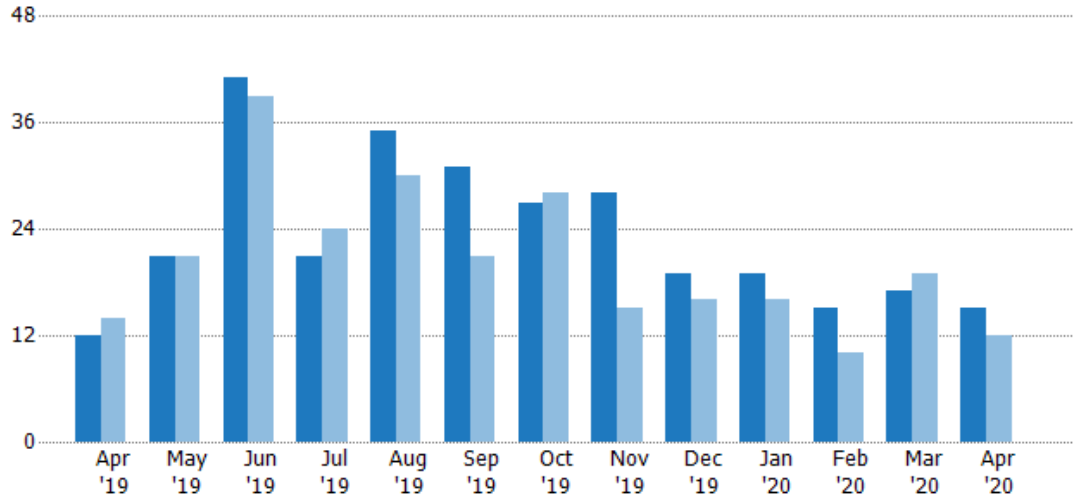
## Closed Sales

The total number of residential properties sold each month.

### Filters Used

ZIP: Essex, VT 05451, Essex Junction, VT 05452, Essex Junction, VT 05453  
 Property Type: Condo/Townhouse/Apt, Single Family Residence

Month/Year	Count	% Chg.
Apr '20	15	25%
Apr '19	12	-14.3%
Apr '18	14	28.6%



	Apr '19	May '19	Jun '19	Jul '19	Aug '19	Sep '19	Oct '19	Nov '19	Dec '19	Jan '20	Feb '20	Mar '20	Apr '20
Current Year	12	21	41	21	35	31	27	28	19	19	15	17	15
Prior Year	14	21	39	24	30	21	28	15	16	16	10	19	12
Percent Change from Prior Year	-14%	0%	5%	-13%	17%	48%	-4%	87%	19%	19%	50%	-11%	25%

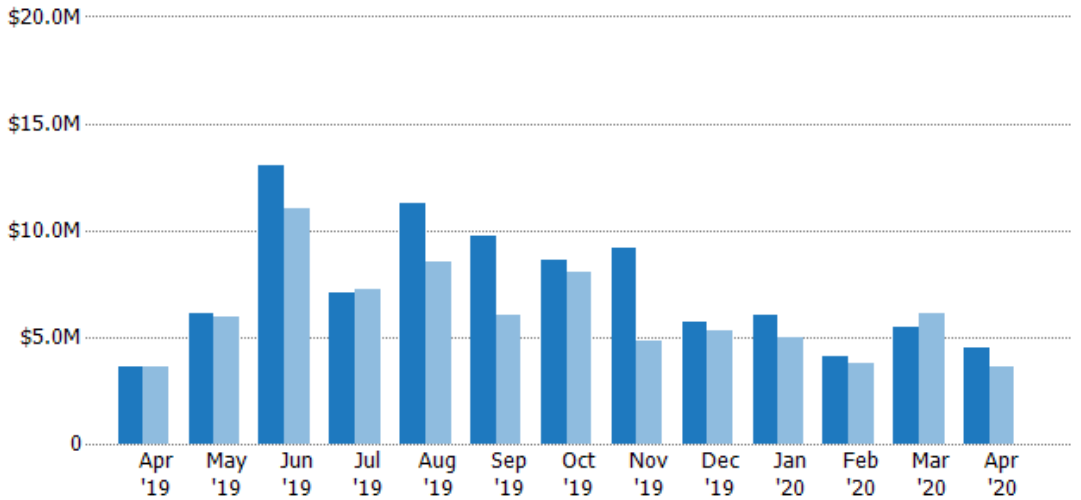
## Closed Sales Volume

The sum of the sales price of residential properties sold each month.

### Filters Used

ZIP: Essex, VT 05451, Essex Junction, VT 05452, Essex Junction, VT 05453  
 Property Type: Condo/Townhouse/Apt, Single Family Residence

Month/Year	Volume	% Chg.
Apr '20	\$4.5M	24.8%
Apr '19	\$3.61M	-0.7%
Apr '18	\$3.63M	19.9%



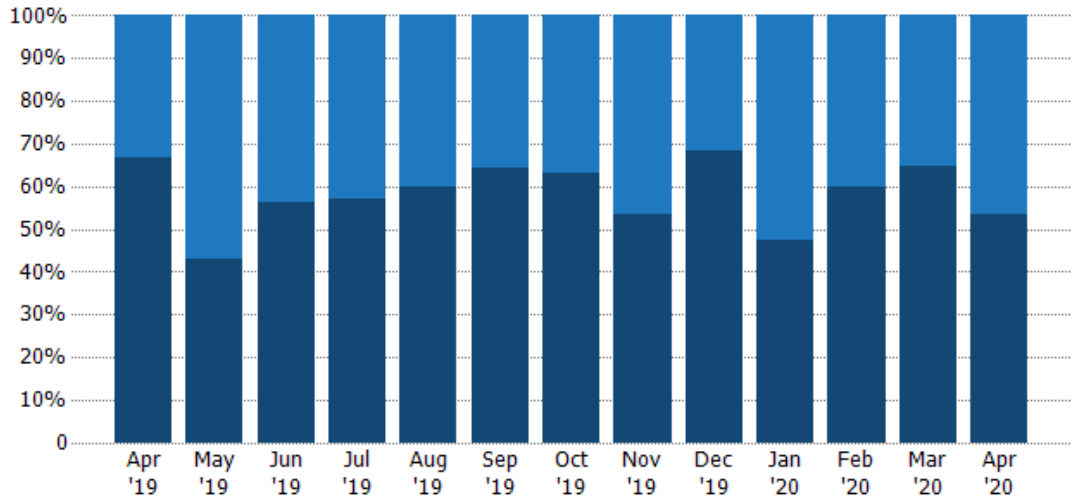
	Apr '19	May '19	Jun '19	Jul '19	Aug '19	Sep '19	Oct '19	Nov '19	Dec '19	Jan '20	Feb '20	Mar '20	Apr '20
Current Year	\$3.61M	\$6.1M	\$13M	\$7.04M	\$11.3M	\$9.75M	\$8.63M	\$9.13M	\$5.68M	\$5.99M	\$4.1M	\$5.49M	\$4.5M
Prior Year	\$3.63M	\$5.92M	\$11M	\$7.24M	\$8.5M	\$6.02M	\$8.06M	\$4.81M	\$5.29M	\$4.94M	\$3.79M	\$6.14M	\$3.61M
Percent Change from Prior Year	-1%	3%	18%	-3%	32%	62%	7%	90%	7%	21%	8%	-10%	25%

## Closed Sales by Property Type

The percentage of residential properties sold each month by property type.

### Filters Used

ZIP: Essex, VT 05451, Essex Junction, VT 05452, Essex Junction, VT 05453  
 Property Type: Condo/Townhouse/Apt, Single Family Residence



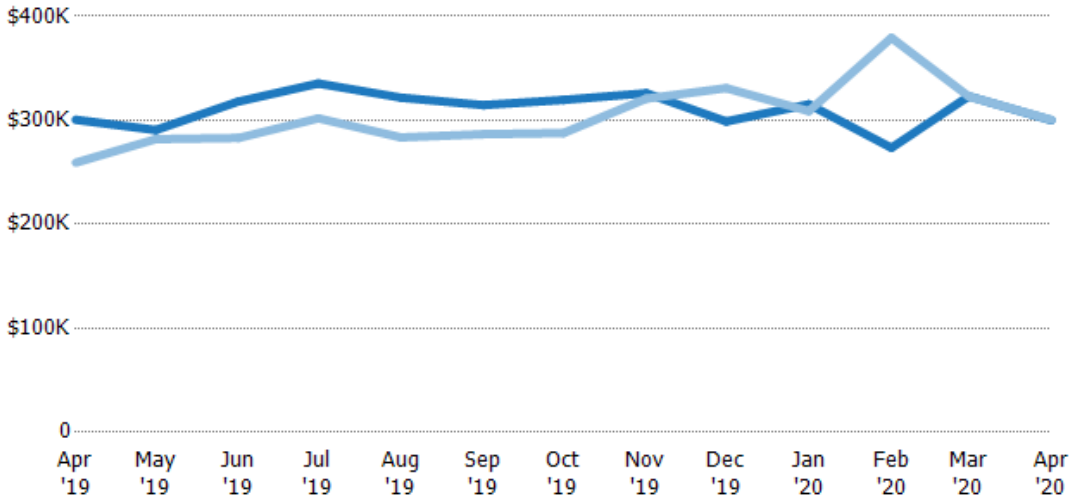
Property Type	Apr '19	May '19	Jun '19	Jul '19	Aug '19	Sep '19	Oct '19	Nov '19	Dec '19	Jan '20	Feb '20	Mar '20	Apr '20
Condo/Townhouse	33%	57%	44%	43%	40%	35%	37%	46%	32%	53%	40%	35%	47%
Single Family Residence	67%	43%	56%	57%	60%	65%	63%	54%	68%	47%	60%	65%	53%

## Average Sales Price

The average sales price of the residential properties sold each month.

### Filters Used

ZIP: Essex, VT 05451, Essex Junction, VT 05452, Essex Junction, VT 05453  
 Property Type: Condo/Townhouse/Apt, Single Family Residence



Month/Year	Price	% Chg.
Apr '20	\$300K	-0.2%
Apr '19	\$300K	15.9%
Apr '18	\$259K	-6.7%

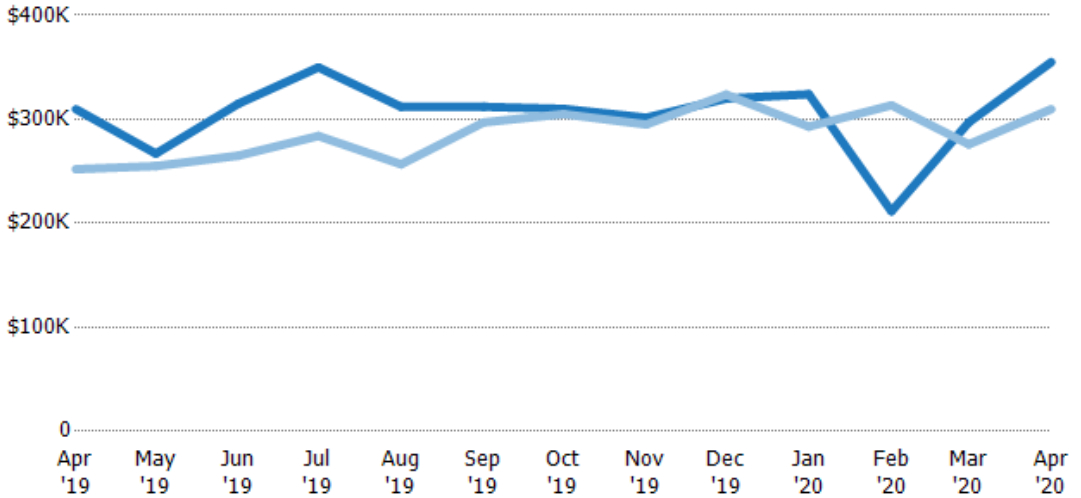
Property Type	Apr '19	May '19	Jun '19	Jul '19	Aug '19	Sep '19	Oct '19	Nov '19	Dec '19	Jan '20	Feb '20	Mar '20	Apr '20
Current Year	\$300K	\$291K	\$318K	\$335K	\$322K	\$315K	\$320K	\$326K	\$299K	\$315K	\$274K	\$323K	\$300K
Prior Year	\$259K	\$282K	\$283K	\$302K	\$283K	\$287K	\$288K	\$321K	\$331K	\$309K	\$379K	\$323K	\$300K
Percent Change from Prior Year	16%	3%	12%	11%	14%	10%	11%	2%	-10%	2%	-28%	0%	0%

## Median Sales Price

The median sales price of the residential properties sold each month.

### Filters Used

ZIP: Essex, VT 05451, Essex Junction, VT 05452, Essex Junction, VT 05453  
 Property Type: Condo/Townhouse/Apt, Single Family Residence



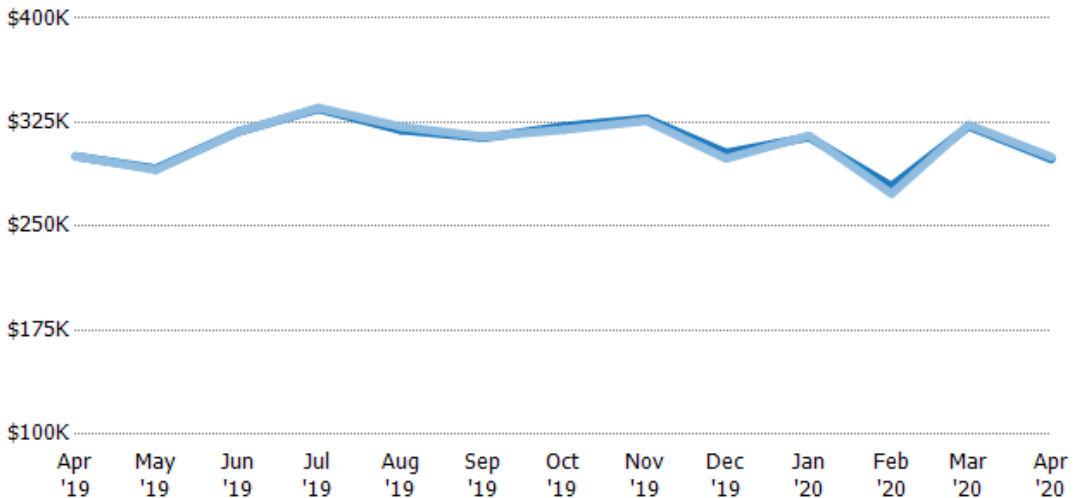
	Apr '19	May '19	Jun '19	Jul '19	Aug '19	Sep '19	Oct '19	Nov '19	Dec '19	Jan '20	Feb '20	Mar '20	Apr '20
Current Year	\$310K	\$267K	\$315K	\$350K	\$312K	\$312K	\$310K	\$302K	\$320K	\$324K	\$212K	\$297K	\$355K
Prior Year	\$252K	\$255K	\$265K	\$284K	\$257K	\$297K	\$305K	\$295K	\$324K	\$293K	\$313K	\$276K	\$310K
Percent Change from Prior Year	23%	5%	19%	23%	22%	5%	2%	2%	-1%	11%	-33%	8%	15%

## Average Sales Price vs Average Listing Price

The average sales price as a percentage of the average listing price for properties sold each month.

### Filters Used

ZIP: Essex, VT 05451, Essex Junction, VT 05452, Essex Junction, VT 05453  
 Property Type: Condo/Townhouse/Apt, Single Family Residence



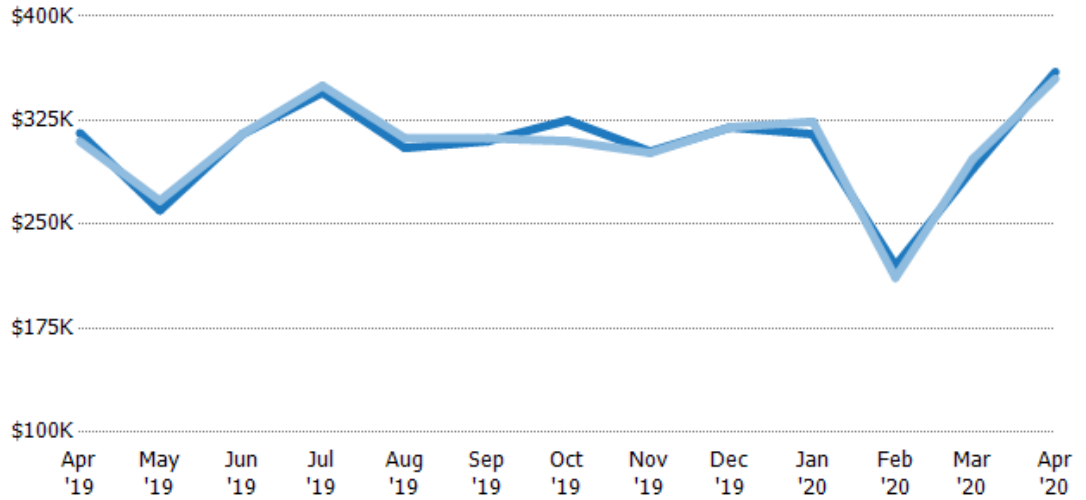
	Apr '19	May '19	Jun '19	Jul '19	Aug '19	Sep '19	Oct '19	Nov '19	Dec '19	Jan '20	Feb '20	Mar '20	Apr '20
Avg List Price	\$300K	\$292K	\$318K	\$335K	\$319K	\$314K	\$322K	\$328K	\$303K	\$314K	\$279K	\$322K	\$298K
Avg Sales Price	\$300K	\$291K	\$318K	\$335K	\$322K	\$315K	\$320K	\$326K	\$299K	\$315K	\$274K	\$323K	\$300K
Avg Sales Price as a % of Avg List Price	100%	100%	100%	100%	101%	100%	99%	99%	99%	100%	98%	100%	101%

## Median Sales Price vs Median Listing Price

The median sales price as a percentage of the median listing price for properties sold each month.

### Filters Used

ZIP: Essex, VT 05451, Essex Junction, VT 05452, Essex Junction, VT 05453  
 Property Type: Condo/Townhouse/Apt, Single Family Residence



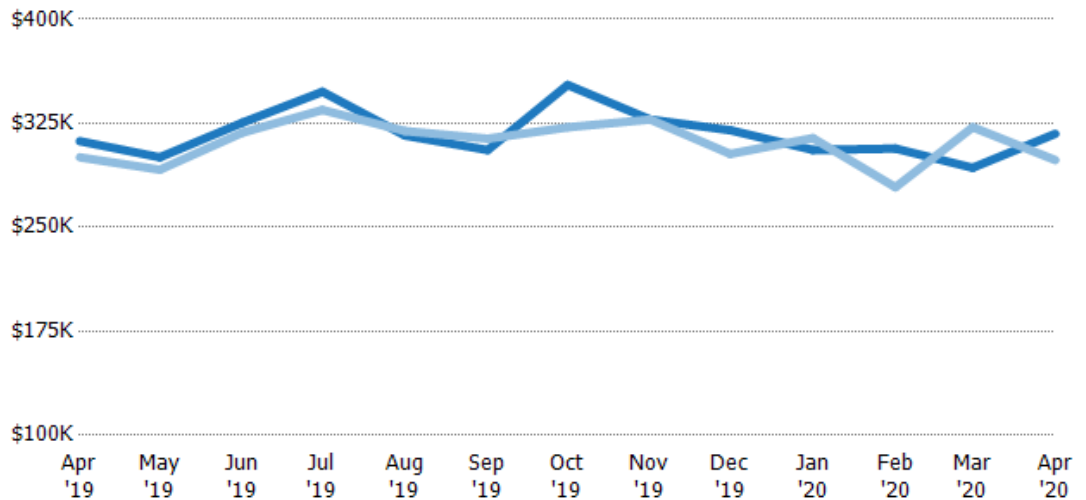
	Apr '19	May '19	Jun '19	Jul '19	Aug '19	Sep '19	Oct '19	Nov '19	Dec '19	Jan '20	Feb '20	Mar '20	Apr '20
Median List Price	\$316K	\$260K	\$315K	\$345K	\$305K	\$310K	\$325K	\$302K	\$320K	\$315K	\$220K	\$290K	\$360K
Median Sales Price	\$310K	\$267K	\$315K	\$350K	\$312K	\$312K	\$310K	\$302K	\$320K	\$324K	\$212K	\$297K	\$355K
Med Sales Price as a % of Med List Price	98%	103%	100%	101%	102%	101%	95%	100%	100%	103%	96%	102%	99%

## Average Sales Price vs Average Est Value

The average sales price as a percentage of the average AVM or RVM® valuation estimate for properties sold each month.

### Filters Used

ZIP: Essex, VT 05451, Essex Junction, VT 05452, Essex Junction, VT 05453  
 Property Type: Condo/Townhouse/Apt, Single Family Residence



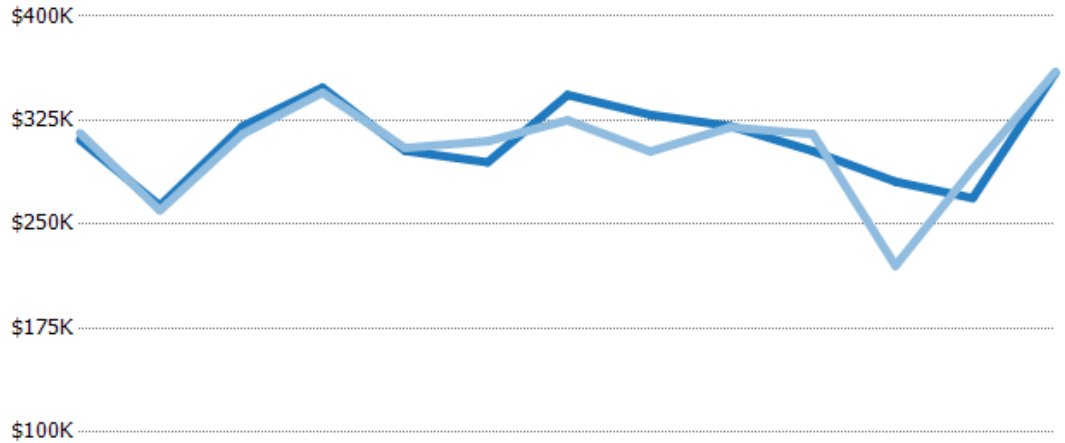
	Apr '19	May '19	Jun '19	Jul '19	Aug '19	Sep '19	Oct '19	Nov '19	Dec '19	Jan '20	Feb '20	Mar '20	Apr '20
Avg Est Value	\$312K	\$300K	\$325K	\$348K	\$316K	\$306K	\$353K	\$328K	\$320K	\$306K	\$307K	\$293K	\$317K
Avg Sales Price	\$300K	\$292K	\$318K	\$335K	\$319K	\$314K	\$322K	\$328K	\$303K	\$314K	\$279K	\$322K	\$298K
Avg Sales Price as a % of Avg Est Value	96%	97%	98%	96%	101%	103%	91%	100%	95%	103%	91%	110%	94%

## Median Sales Price vs Median Est Value

The median sales price as a percent of the median AVM or RVM® valuation estimate for properties sold each month.

### Filters Used

ZIP: Essex, VT 05451, Essex Junction, VT 05452, Essex Junction, VT 05453  
 Property Type: Condo/Townhouse/Apt, Single Family Residence



	Apr '19	May '19	Jun '19	Jul '19	Aug '19	Sep '19	Oct '19	Nov '19	Dec '19	Jan '20	Feb '20	Mar '20	Apr '20
Median Est Value	\$311K	\$263K	\$321K	\$349K	\$303K	\$295K	\$343K	\$329K	\$321K	\$303K	\$281K	\$269K	\$359K
Median Sales Price	\$316K	\$260K	\$315K	\$345K	\$305K	\$310K	\$325K	\$302K	\$320K	\$315K	\$220K	\$290K	\$360K
Med Sales Price as a % of Med Est Value	102%	99%	98%	99%	101%	105%	95%	92%	100%	104%	78%	108%	100%