

## Summary of Key Listing and Sales Metrics

A summary of the key metrics selected to be included in the report. MLS sources where licensed.

Key Metrics	Apr 2020	Apr 2019	+ / -	YTD 2020	YTD 2019	+ / -
<b>Listing Activity Charts Metrics</b>						
New Listing Count	8	20	-60%	80	98	-18.4%
New Listing Volume	\$2,164,400	\$5,372,499	-59.7%	\$26,218,100	\$30,798,299	-14.9%
Active Listing Count	166	242	-31.4%	N/A	N/A	
Active Listing Volume	\$67,412,091	\$96,332,349	-30%	N/A	N/A	
Average Listing Price	\$406,097	\$398,068	+2%	\$391,802	\$413,481	-5.2%
Median Listing Price	\$285,450	\$291,500	-2.1%	\$288,223	\$294,351	-2.1%
Median Days in RPR	219.5	212	+3.5%	201.94	190.44	+6%
Months of Inventory	9.8	16.1	-39.5%	11.1	15.3	-27.3%
Absorption Rate	10.24%	6.2%	+4%	8.97%	6.52%	+2.5%
<b>Sales Activity Charts Metrics</b>						
New Pending Sales Count	12	19	-36.8%	74	84	-11.9%
New Pending Sales Volume	\$3,294,200	\$4,354,700	-24.4%	\$19,754,700	\$19,901,697	-0.7%
Pending Sales Count	23	26	-11.5%	N/A	N/A	
Pending Sales Volume	\$7,038,900	\$6,805,599	+3.4%	N/A	N/A	
Closed Sales Count	15	21	-28.6%	67	68	-1.5%
Closed Sales Volume	\$3,924,600	\$4,378,884	-10.4%	\$16,990,200	\$15,048,842	+12.9%
Average Sales Price	\$261,640	\$208,518	+25.5%	\$253,585	\$221,306	+14.6%
Median Sales Price	\$247,500	\$195,000	+26.9%	\$228,888	\$209,699	+9.2%

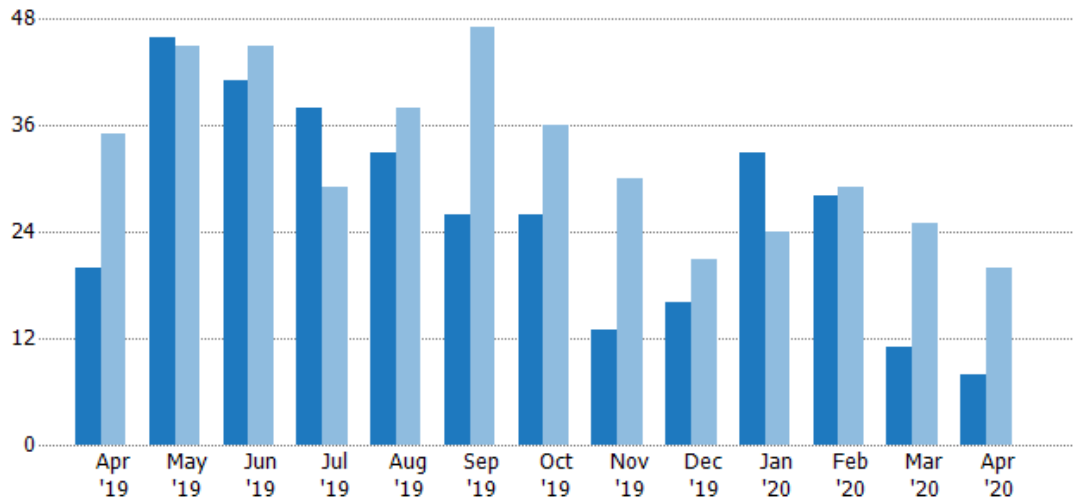
## New Listings

The number of new residential listings that were added each month.

### Filters Used

ZIP: East Dover, VT 05341, South Newfane, VT 05351, Wardsboro, VT 05355, West Dover, VT 05356, Wilmington, VT 05363  
 Property Type: Condo/Townhouse/Apt, Single Family Residence

Month/Year	Count	% Chg.
Apr '20	8	-60%
Apr '19	20	-42.9%
Apr '18	35	-37.1%



Current Year	20	46	41	38	33	26	26	13	16	33	28	11	8
Prior Year	35	45	45	29	38	47	36	30	21	24	29	25	20
Percent Change from Prior Year	-43%	2%	-9%	31%	-13%	-45%	-28%	-57%	-24%	38%	-3%	-56%	-60%

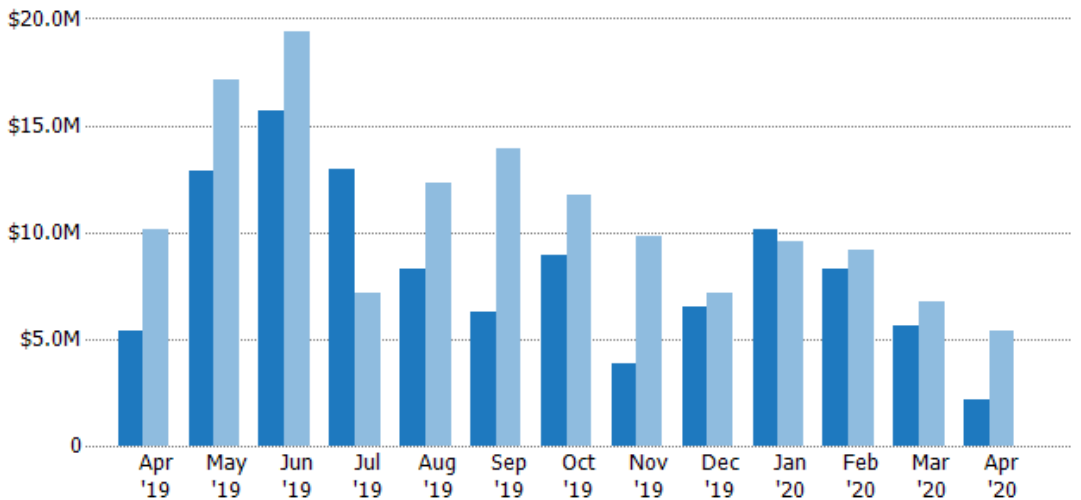
## New Listing Volume

The sum of the listing price of residential listings that were added each month.

### Filters Used

ZIP: East Dover, VT 05341, South Newfane, VT 05351, Wardsboro, VT 05355, West Dover, VT 05356, Wilmington, VT 05363  
 Property Type: Condo/Townhouse/Apt, Single Family Residence

Month/Year	Volume	% Chg.
Apr '20	\$2.16M	-59.7%
Apr '19	\$5.37M	-47.1%
Apr '18	\$10.1M	-24.9%



Current Year	\$5.37M	\$12.9M	\$15.7M	\$12.9M	\$8.31M	\$6.27M	\$8.9M	\$3.83M	\$6.53M	\$10.2M	\$8.25M	\$5.65M	\$2.16M
Prior Year	\$10.1M	\$17.1M	\$19.4M	\$7.11M	\$12.3M	\$13.9M	\$11.7M	\$9.83M	\$7.17M	\$9.53M	\$9.13M	\$6.77M	\$5.37M
Percent Change from Prior Year	-47%	-25%	-19%	82%	-33%	-55%	-24%	-61%	-9%	7%	-10%	-16%	-60%

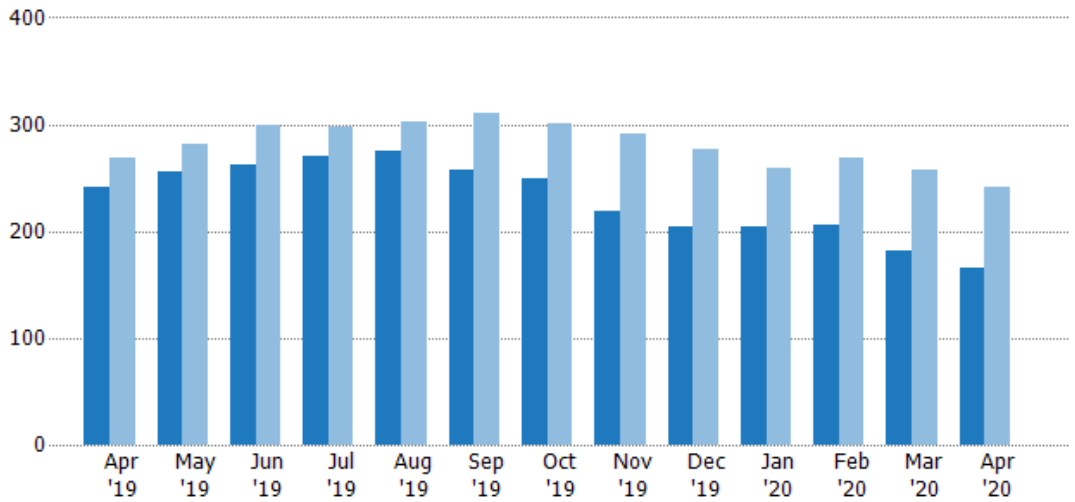
## Active Listings

The number of active residential listings at the end of each month.

### Filters Used

ZIP: East Dover, VT 05341, South Newfane, VT 05351, Wardsboro, VT 05355, West Dover, VT 05356, Wilmington, VT 05363

Property Type:  
Condo/Townhouse/Apt, Single Family Residence



Month/Year	Count	% Chg.
Apr '20	166	-31.4%
Apr '19	242	-9.7%
Apr '18	268	-6%

	Apr '19	May '19	Jun '19	Jul '19	Aug '19	Sep '19	Oct '19	Nov '19	Dec '19	Jan '20	Feb '20	Mar '20	Apr '20
Current Year	242	256	263	270	275	257	250	219	205	204	206	182	166
Prior Year	268	282	299	297	302	310	301	291	277	259	269	258	242
Percent Change from Prior Year	-10%	-9%	-12%	-9%	-9%	-17%	-17%	-25%	-26%	-21%	-23%	-29%	-31%

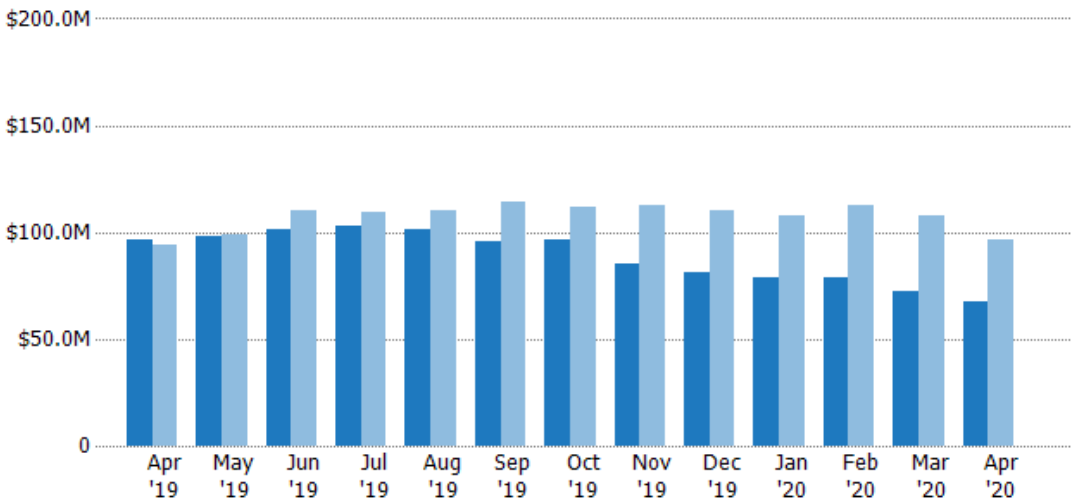
## Active Listing Volume

The sum of the listing price of active residential listings at the end of each month.

### Filters Used

ZIP: East Dover, VT 05341, South Newfane, VT 05351, Wardsboro, VT 05355, West Dover, VT 05356, Wilmington, VT 05363

Property Type:  
Condo/Townhouse/Apt, Single Family Residence



Month/Year	Volume	% Chg.
Apr '20	\$67.4M	-30%
Apr '19	\$96.3M	2.4%
Apr '18	\$94.1M	-6.6%

	Apr '19	May '19	Jun '19	Jul '19	Aug '19	Sep '19	Oct '19	Nov '19	Dec '19	Jan '20	Feb '20	Mar '20	Apr '20
Current Year	\$96.3M	\$98.1M	\$101M	\$103M	\$101M	\$95.8M	\$96.2M	\$85M	\$80.9M	\$78.8M	\$78.5M	\$72.3M	\$67.4M
Prior Year	\$94.1M	\$99M	\$110M	\$109M	\$110M	\$114M	\$112M	\$112M	\$110M	\$108M	\$113M	\$108M	\$96.3M
Percent Change from Prior Year	2%	-1%	-8%	-6%	-8%	-16%	-14%	-24%	-26%	-27%	-30%	-33%	-30%

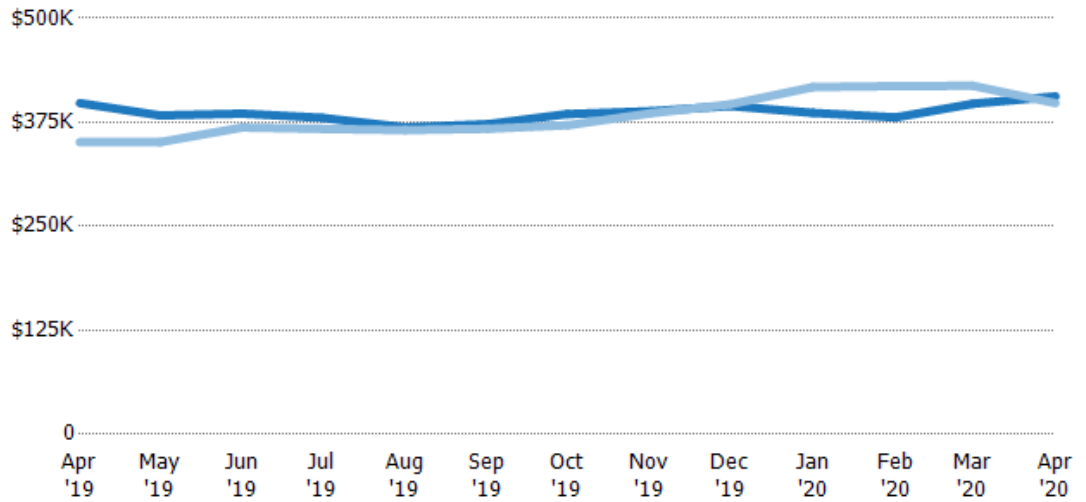
## Average Listing Price

The average listing price of active residential listings at the end of each month.

### Filters Used

ZIP: East Dover, VT 05341, South Newfane, VT 05351, Wardsboro, VT 05355, West Dover, VT 05356, Wilmington, VT 05363  
 Property Type: Condo/Townhouse/Apt, Single Family Residence

Month/Year	Price	% Chg.
Apr '20	\$406K	2%
Apr '19	\$398K	13.4%
Apr '18	\$351K	-0.7%



Current Year	\$398K	\$383K	\$385K	\$380K	\$369K	\$373K	\$385K	\$388K	\$395K	\$386K	\$381K	\$397K	\$406K
Prior Year	\$351K	\$351K	\$369K	\$367K	\$366K	\$367K	\$371K	\$386K	\$397K	\$417K	\$419K	\$419K	\$398K
Percent Change from Prior Year	13%	9%	5%	4%	1%	1%	4%	1%	0%	-7%	-9%	-5%	2%

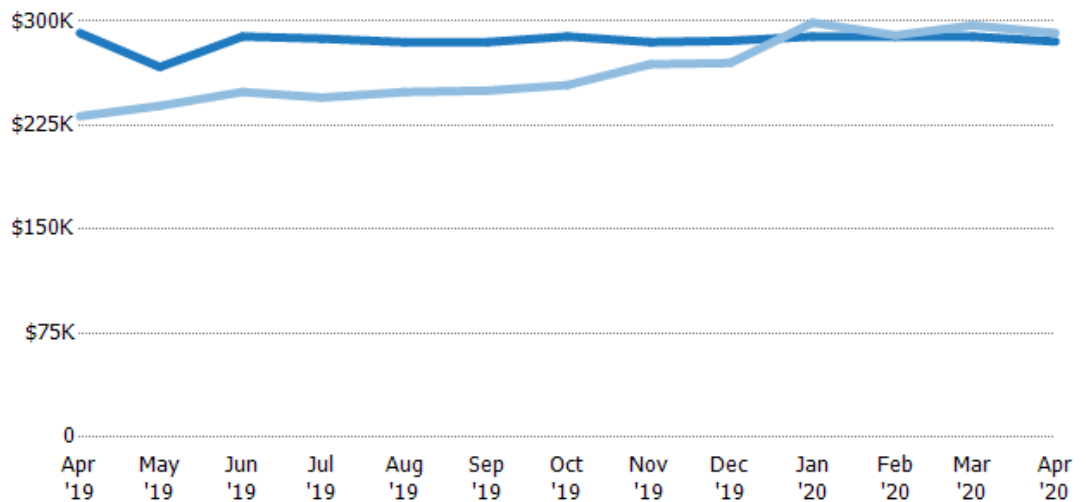
## Median Listing Price

The median listing price of active residential listings at the end of each month.

### Filters Used

ZIP: East Dover, VT 05341, South Newfane, VT 05351, Wardsboro, VT 05355, West Dover, VT 05356, Wilmington, VT 05363  
 Property Type: Condo/Townhouse/Apt, Single Family Residence

Month/Year	Price	% Chg.
Apr '20	\$285K	-2.1%
Apr '19	\$292K	25.9%
Apr '18	\$232K	7.6%



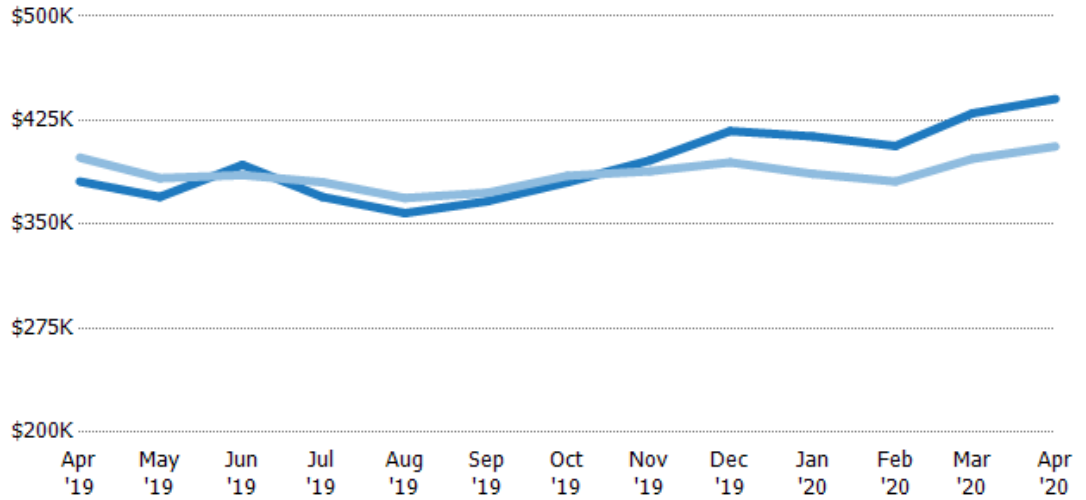
Current Year	\$292K	\$267K	\$289K	\$287K	\$285K	\$285K	\$289K	\$285K	\$286K	\$289K	\$289K	\$289K	\$285K
Prior Year	\$232K	\$239K	\$249K	\$245K	\$249K	\$250K	\$254K	\$269K	\$270K	\$299K	\$290K	\$297K	\$292K
Percent Change from Prior Year	26%	12%	16%	17%	14%	14%	14%	6%	6%	-3%	0%	-3%	-2%

## Average Listing Price vs Average Est Value

The average listing price as a percentage of the average AVM or RVM® valuation estimate for active listings each month.

### Filters Used

ZIP: East Dover, VT 05341, South Newfane, VT 05351, Wardsboro, VT 05355, West Dover, VT 05356, Wilmington, VT 05363  
 Property Type: Condo/Townhouse/Apt, Single Family Residence



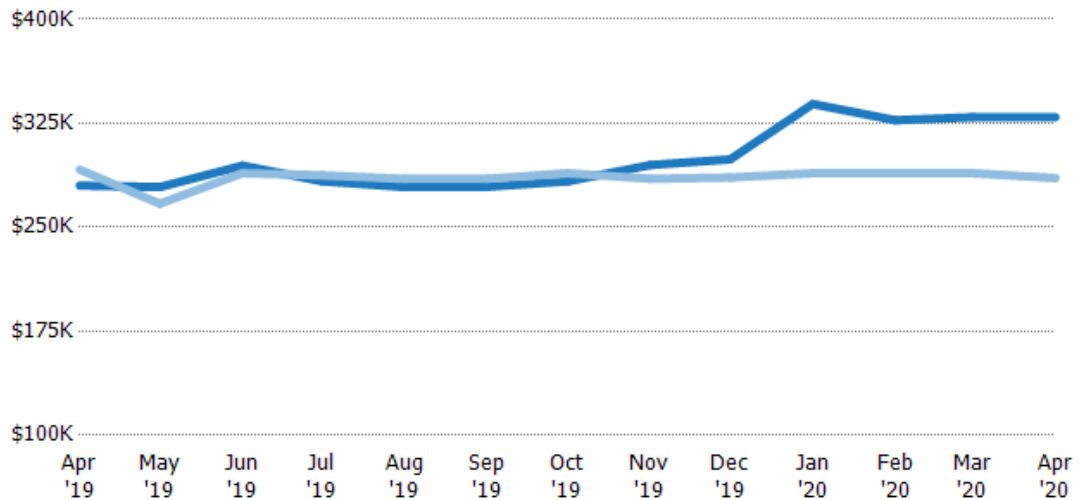
	Apr '19	May '19	Jun '19	Jul '19	Aug '19	Sep '19	Oct '19	Nov '19	Dec '19	Jan '20	Feb '20	Mar '20	Apr '20
Avg Est Value	\$381K	\$370K	\$393K	\$370K	\$358K	\$367K	\$380K	\$396K	\$417K	\$413K	\$406K	\$430K	\$440K
Avg Listing Price	\$398K	\$383K	\$385K	\$380K	\$369K	\$373K	\$385K	\$388K	\$395K	\$386K	\$381K	\$397K	\$406K
Avg Listing Price as a % of Avg Est Value	105%	104%	98%	103%	103%	102%	101%	98%	95%	93%	94%	92%	92%

## Median Listing Price vs Median Est Value

The median listing price as a percentage of the median AVM or RVM® valuation estimate for active listings each month.

### Filters Used

ZIP: East Dover, VT 05341, South Newfane, VT 05351, Wardsboro, VT 05355, West Dover, VT 05356, Wilmington, VT 05363  
 Property Type: Condo/Townhouse/Apt, Single Family Residence



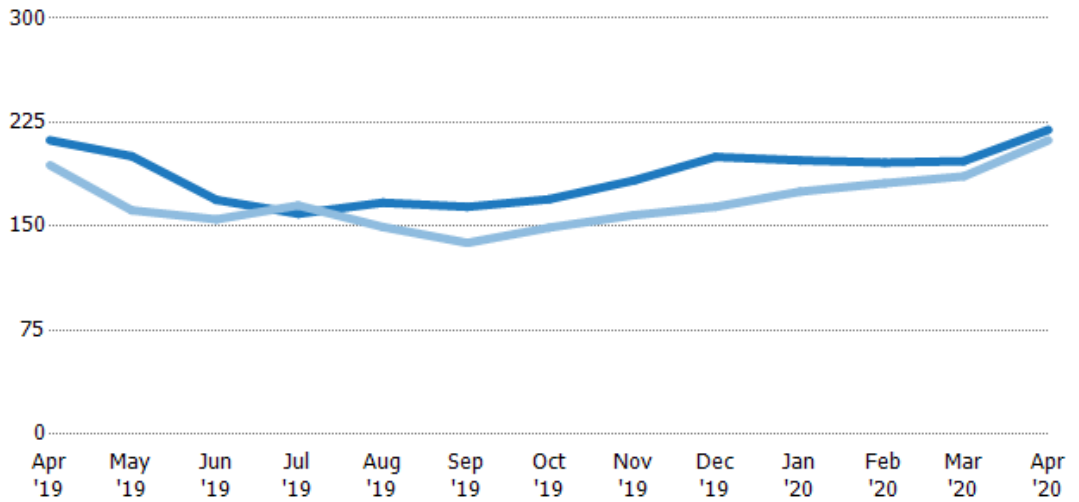
	Apr '19	May '19	Jun '19	Jul '19	Aug '19	Sep '19	Oct '19	Nov '19	Dec '19	Jan '20	Feb '20	Mar '20	Apr '20
Median Est Value	\$280K	\$279K	\$294K	\$283K	\$279K	\$279K	\$283K	\$295K	\$299K	\$339K	\$327K	\$329K	\$329K
Median Listing Price	\$292K	\$267K	\$289K	\$287K	\$285K	\$285K	\$289K	\$285K	\$286K	\$289K	\$289K	\$289K	\$285K
Med Listing Price as a % of Med Est Value	104%	96%	98%	102%	102%	102%	102%	97%	96%	85%	88%	88%	87%

## Median Days in RPR

The median number of days between when residential properties are first displayed as active listings in RPR and when accepted offers have been noted in RPR.

### Filters Used

ZIP: East Dover, VT 05341, South Newfane, VT 05351, Wardsboro, VT 05355, West Dover, VT 05356, Wilmington, VT 05363  
 Property Type: Condo/Townhouse/Apt, Single Family Residence



Month/Year	Days	% Chg.
Apr '20	220	3.5%
Apr '19	212	9.3%
Apr '18	194	-0.8%

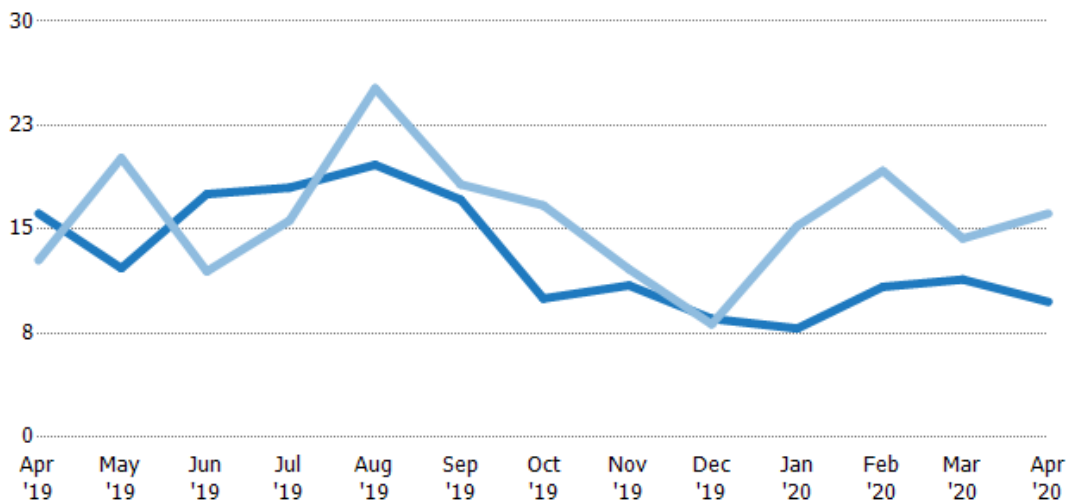
Current Year	212	201	169	159	167	164	170	183	200	198	196	197	220
Prior Year	194	162	155	165	150	138	149	158	164	175	181	186	212
Percent Change from Prior Year	9%	24%	9%	-4%	12%	19%	14%	16%	22%	13%	8%	6%	4%

## Months of Inventory

The number of months it would take to exhaust active listings at the current sales rate.

### Filters Used

ZIP: East Dover, VT 05341, South Newfane, VT 05351, Wardsboro, VT 05355, West Dover, VT 05356, Wilmington, VT 05363  
 Property Type: Condo/Townhouse/Apt, Single Family Residence



Month/Year	Months	% Chg.
Apr '20	9.76	-39.5%
Apr '19	16.1	26.4%
Apr '18	12.8	9.7%

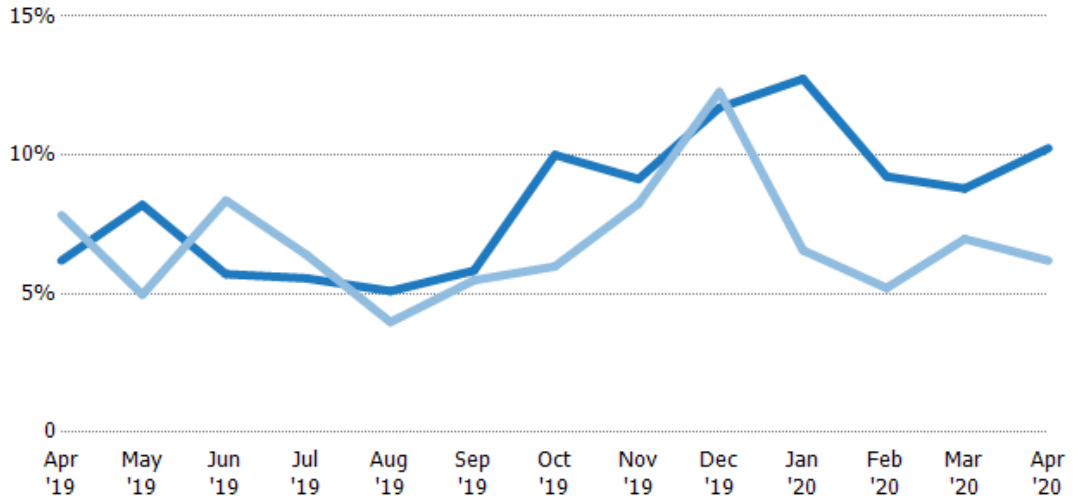
Current Year	16.1	12.2	17.5	18	19.6	17.1	10	11	8.54	7.85	10.8	11.4	9.76
Prior Year	12.8	20.1	12	15.6	25.2	18.2	16.7	12.1	8.15	15.2	19.2	14.3	16.1
Percent Change from Prior Year	26%	-39%	47%	15%	-22%	-6%	-40%	-10%	5%	-49%	-44%	-21%	-39%

## Absorption Rate

The percentage of inventory sold per month.

### Filters Used

ZIP: East Dover, VT 05341, South Newfane, VT 05351, Wardsboro, VT 05355, West Dover, VT 05356, Wilmington, VT 05363  
 Property Type: Condo/Townhouse/Apt, Single Family Residence



Month/Year	Rate	Chg.
Apr '20	10%	-4.1%
Apr '19	6%	1.6%
Apr '18	8%	-8.8%

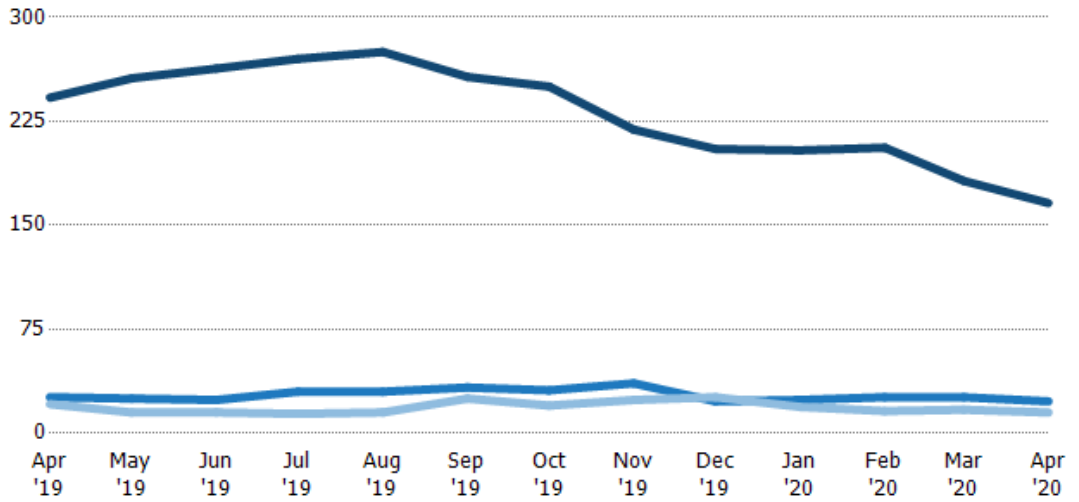
	Apr '19	May '19	Jun '19	Jul '19	Aug '19	Sep '19	Oct '19	Nov '19	Dec '19	Jan '20	Feb '20	Mar '20	Apr '20
Current Year	6%	8%	6%	6%	5%	6%	10%	9%	12%	13%	9%	9%	10%
Prior Year	8%	5%	8%	6%	4%	5%	6%	8%	12%	7%	5%	7%	6%
Change from Prior Year	2%	-3%	3%	1%	-1%	0%	-4%	-1%	1%	-6%	-4%	-2%	-4%

## Active/Pending/Sold Units

The number of residential properties that were Active, Pending and Sold each month.

### Filters Used

ZIP: East Dover, VT 05341, South Newfane, VT 05351, Wardsboro, VT 05355, West Dover, VT 05356, Wilmington, VT 05363  
 Property Type: Condo/Townhouse/Apt, Single Family Residence



	Apr '19	May '19	Jun '19	Jul '19	Aug '19	Sep '19	Oct '19	Nov '19	Dec '19	Jan '20	Feb '20	Mar '20	Apr '20
Active	242	256	263	270	275	257	250	219	205	204	206	182	166
Pending	26	25	24	30	30	33	31	36	23	24	26	26	23
Sold	21	15	15	14	15	25	20	24	26	19	16	17	15

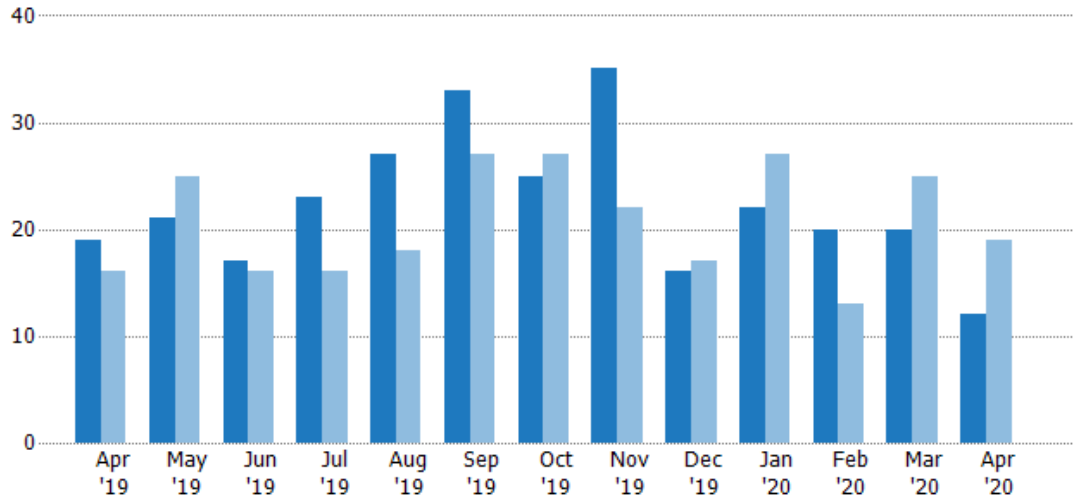
## New Pending Sales

The number of residential properties with accepted offers that were added each month.

### Filters Used

ZIP: East Dover, VT 05341, South Newfane, VT 05351, Wardsboro, VT 05355, West Dover, VT 05356, Wilmington, VT 05363  
 Property Type: Condo/Townhouse/Apt, Single Family Residence

Month/Year	Count	% Chg.
Apr '20	12	-36.8%
Apr '19	19	18.8%
Apr '18	16	-6.3%



Current Year	19	21	17	23	27	33	25	35	16	22	20	20	12
Prior Year	16	25	16	16	18	27	27	22	17	27	13	25	19
Percent Change from Prior Year	19%	-16%	6%	44%	50%	22%	-7%	59%	-6%	-19%	54%	-20%	-37%

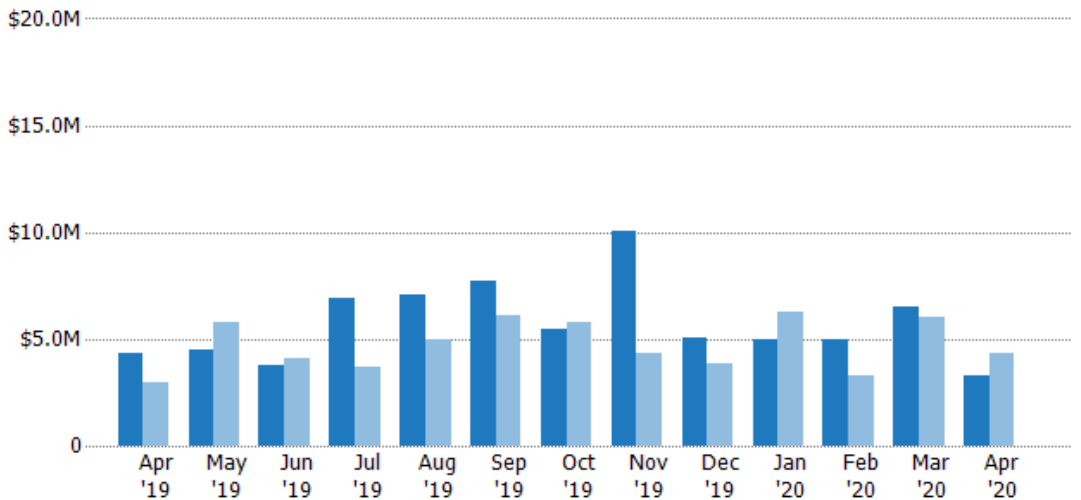
## New Pending Sales Volume

The sum of the sales price of residential properties with accepted offers that were added each month.

### Filters Used

ZIP: East Dover, VT 05341, South Newfane, VT 05351, Wardsboro, VT 05355, West Dover, VT 05356, Wilmington, VT 05363  
 Property Type: Condo/Townhouse/Apt, Single Family Residence

Month/Year	Volume	% Chg.
Apr '20	\$3.29M	-24.4%
Apr '19	\$4.35M	46.2%
Apr '18	\$2.98M	72.3%



Current Year	\$4.35M	\$4.49M	\$3.76M	\$6.95M	\$7.09M	\$7.68M	\$5.46M	\$10.1M	\$5.09M	\$4.95M	\$5.01M	\$6.5M	\$3.29M
Prior Year	\$2.98M	\$5.78M	\$4.09M	\$3.72M	\$4.94M	\$6.11M	\$5.82M	\$4.31M	\$3.85M	\$6.24M	\$3.31M	\$5.99M	\$4.35M
Percent Change from Prior Year	46%	-22%	-8%	87%	43%	26%	-6%	133%	32%	-21%	51%	8%	-24%



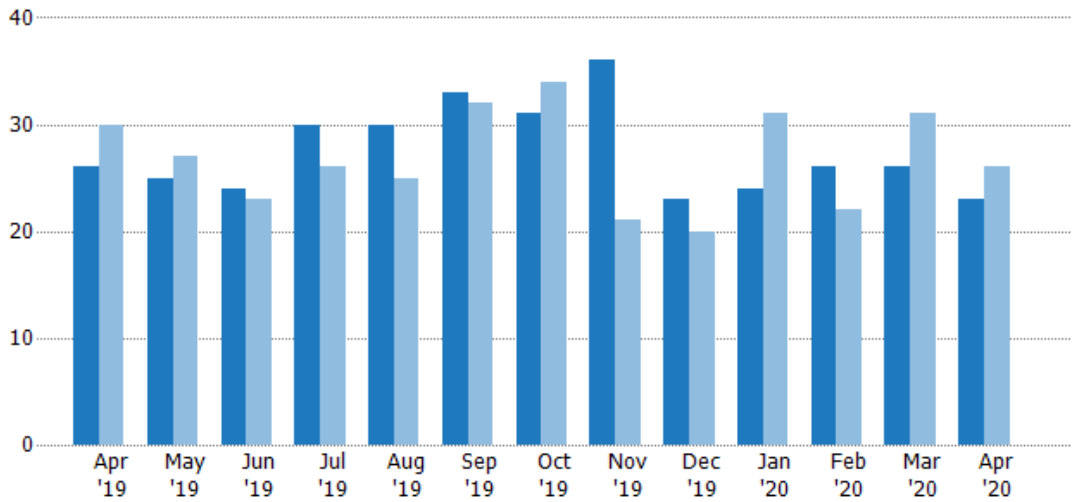
## Pending Sales

The number of residential properties with accepted offers that were available at the end each month.

### Filters Used

ZIP: East Dover, VT 05341, South Newfane, VT 05351, Wardsboro, VT 05355, West Dover, VT 05356, Wilmington, VT 05363

Property Type:  
Condo/Townhouse/Apt, Single Family Residence



Month/Year	Count	% Chg.
Apr '20	23	-11.5%
Apr '19	26	-13.3%
Apr '18	30	-10%

	Apr '19	May '19	Jun '19	Jul '19	Aug '19	Sep '19	Oct '19	Nov '19	Dec '19	Jan '20	Feb '20	Mar '20	Apr '20
Current Year	26	25	24	30	30	33	31	36	23	24	26	26	23
Prior Year	30	27	23	26	25	32	34	21	20	31	22	31	26
Percent Change from Prior Year	-13%	-7%	4%	15%	20%	3%	-9%	71%	15%	-23%	18%	-16%	-12%

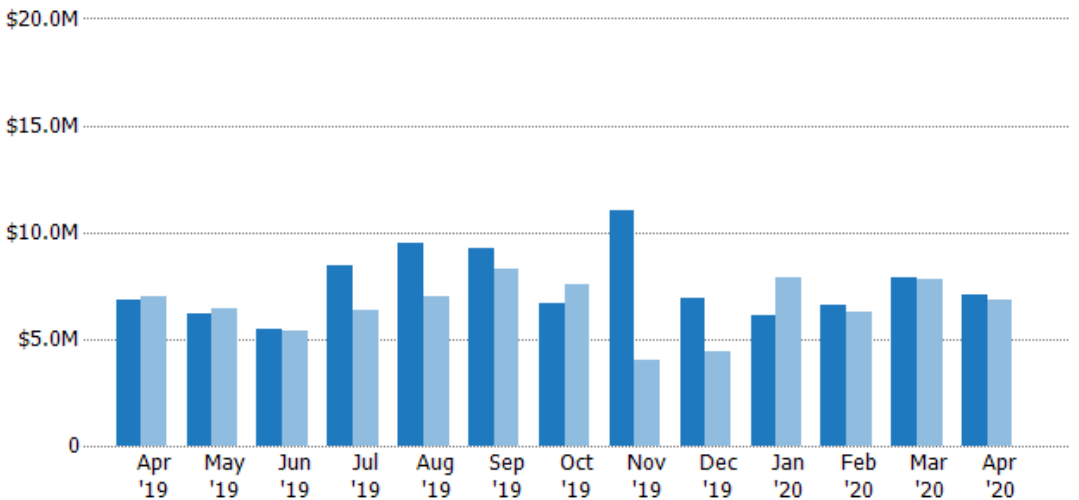
## Pending Sales Volume

The sum of the sales price of residential properties with accepted offers that were available at the end of each month.

### Filters Used

ZIP: East Dover, VT 05341, South Newfane, VT 05351, Wardsboro, VT 05355, West Dover, VT 05356, Wilmington, VT 05363

Property Type:  
Condo/Townhouse/Apt, Single Family Residence



Month/Year	Volume	% Chg.
Apr '20	\$7.04M	3.4%
Apr '19	\$6.81M	-2.1%
Apr '18	\$6.95M	42.7%

	Apr '19	May '19	Jun '19	Jul '19	Aug '19	Sep '19	Oct '19	Nov '19	Dec '19	Jan '20	Feb '20	Mar '20	Apr '20
Current Year	\$6.81M	\$6.18M	\$5.45M	\$8.44M	\$9.48M	\$9.28M	\$6.66M	\$11M	\$6.89M	\$6.08M	\$6.56M	\$7.9M	\$7.04M
Prior Year	\$6.95M	\$6.41M	\$5.36M	\$6.31M	\$7.02M	\$8.27M	\$7.59M	\$4.05M	\$4.41M	\$7.88M	\$6.23M	\$7.77M	\$6.81M
Percent Change from Prior Year	-2%	-4%	2%	34%	35%	12%	-12%	171%	56%	-23%	5%	2%	3%

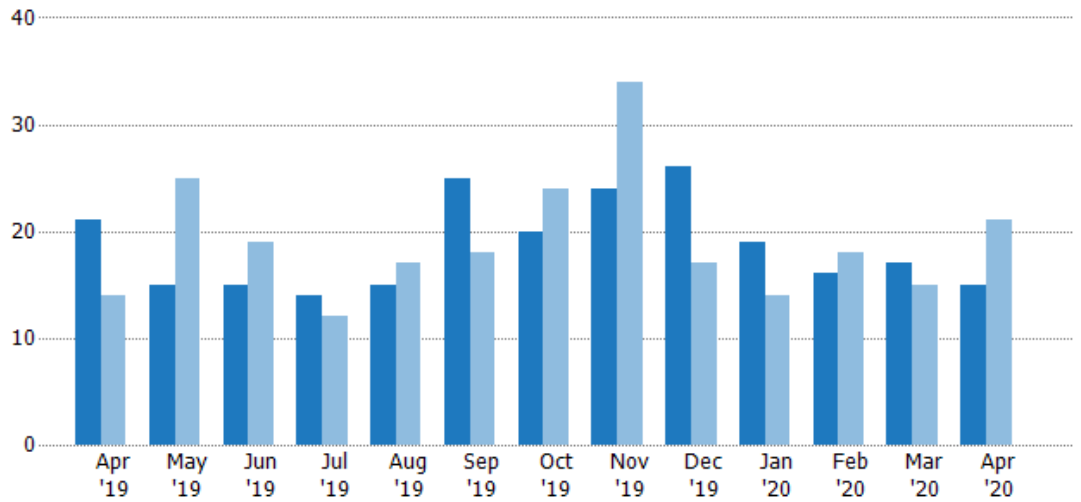
## Closed Sales

The total number of residential properties sold each month.

### Filters Used

ZIP: East Dover, VT 05341, South Newfane, VT 05351, Wardsboro, VT 05355, West Dover, VT 05356, Wilmington, VT 05363  
 Property Type: Condo/Townhouse/Apt, Single Family Residence

Month/Year	Count	% Chg.
Apr '20	15	-28.6%
Apr '19	21	50%
Apr '18	14	7.1%



Current Year	21	15	15	14	15	25	20	24	26	19	16	17	15
Prior Year	14	25	19	12	17	18	24	34	17	14	18	15	21
Percent Change from Prior Year	50%	-40%	-21%	17%	-12%	39%	-17%	-29%	53%	36%	-11%	13%	-29%

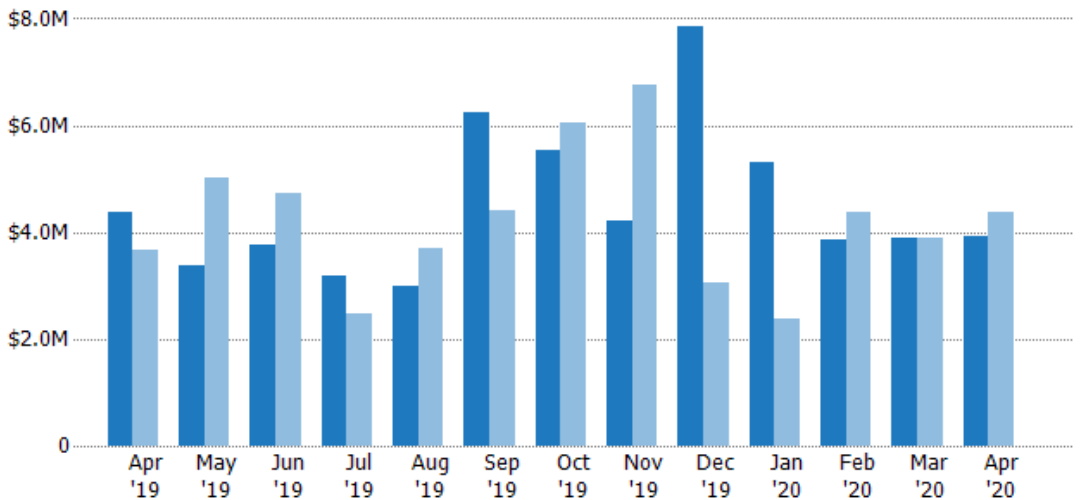
## Closed Sales Volume

The sum of the sales price of residential properties sold each month.

### Filters Used

ZIP: East Dover, VT 05341, South Newfane, VT 05351, Wardsboro, VT 05355, West Dover, VT 05356, Wilmington, VT 05363  
 Property Type: Condo/Townhouse/Apt, Single Family Residence

Month/Year	Volume	% Chg.
Apr '20	\$3.92M	-10.4%
Apr '19	\$4.38M	19%
Apr '18	\$3.68M	10.4%



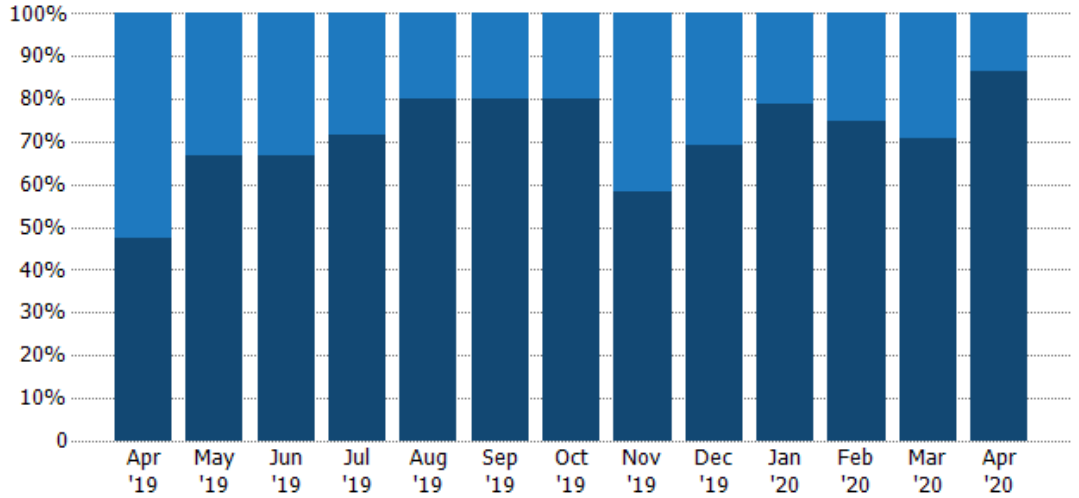
Current Year	\$4.38M	\$3.38M	\$3.75M	\$3.19M	\$3M	\$6.23M	\$5.53M	\$4.22M	\$7.84M	\$5.31M	\$3.87M	\$3.88M	\$3.92M
Prior Year	\$3.68M	\$5.01M	\$4.72M	\$2.49M	\$3.71M	\$4.41M	\$6.04M	\$6.75M	\$3.06M	\$2.39M	\$4.39M	\$3.89M	\$4.38M
Percent Change from Prior Year	19%	-32%	-21%	28%	-19%	41%	-8%	-37%	156%	122%	-12%	0%	-10%

## Closed Sales by Property Type

The percentage of residential properties sold each month by property type.

### Filters Used

ZIP: East Dover, VT 05341, South Newfane, VT 05351, Wardsboro, VT 05355, West Dover, VT 05356, Wilmington, VT 05363  
 Property Type: Condo/Townhouse/Apt, Single Family Residence



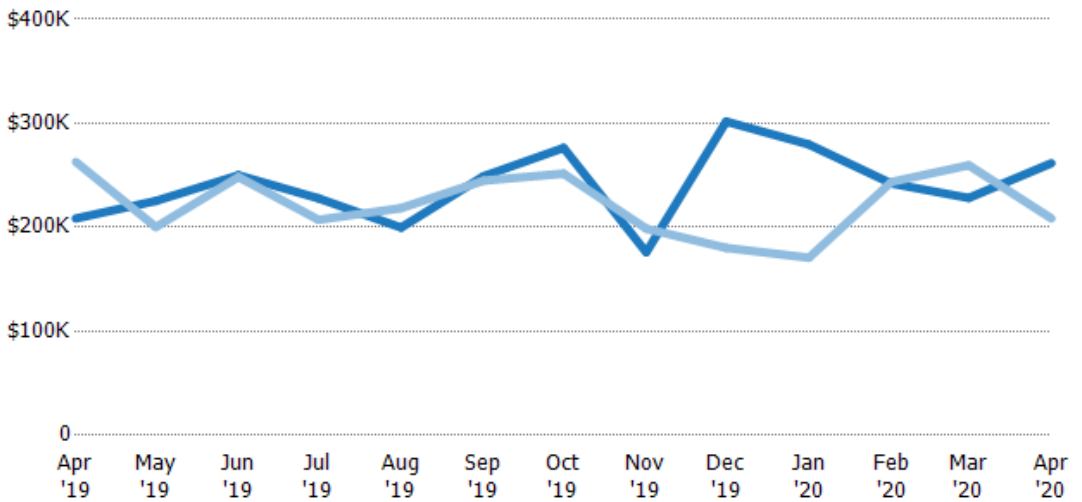
Property Type	Apr '19	May '19	Jun '19	Jul '19	Aug '19	Sep '19	Oct '19	Nov '19	Dec '19	Jan '20	Feb '20	Mar '20	Apr '20
Condo/Townhouse	52%	33%	33%	29%	20%	20%	20%	42%	31%	21%	25%	29%	13%
Single Family Residence	48%	67%	67%	71%	80%	80%	80%	58%	69%	79%	75%	71%	87%

## Average Sales Price

The average sales price of the residential properties sold each month.

### Filters Used

ZIP: East Dover, VT 05341, South Newfane, VT 05351, Wardsboro, VT 05355, West Dover, VT 05356, Wilmington, VT 05363  
 Property Type: Condo/Townhouse/Apt, Single Family Residence



Month/Year	Price	% Chg.
Apr '20	\$262K	25.5%
Apr '19	\$209K	-20.7%
Apr '18	\$263K	3%

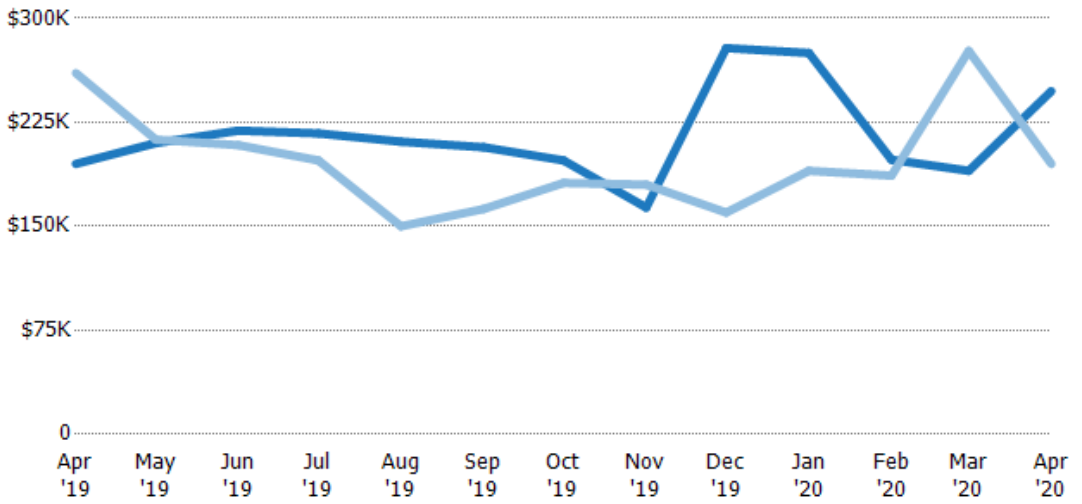
Property Type	Apr '19	May '19	Jun '19	Jul '19	Aug '19	Sep '19	Oct '19	Nov '19	Dec '19	Jan '20	Feb '20	Mar '20	Apr '20
Current Year	\$209K	\$225K	\$250K	\$228K	\$200K	\$249K	\$276K	\$176K	\$302K	\$280K	\$242K	\$228K	\$262K
Prior Year	\$263K	\$200K	\$248K	\$207K	\$218K	\$245K	\$252K	\$199K	\$180K	\$171K	\$244K	\$260K	\$209K
Percent Change from Prior Year	-21%	13%	1%	10%	-9%	2%	10%	-11%	67%	64%	-1%	-12%	25%

## Median Sales Price

The median sales price of the residential properties sold each month.

### Filters Used

ZIP: East Dover, VT 05341, South Newfane, VT 05351, Wardsboro, VT 05355, West Dover, VT 05356, Wilmington, VT 05363  
 Property Type: Condo/Townhouse/Apt, Single Family Residence



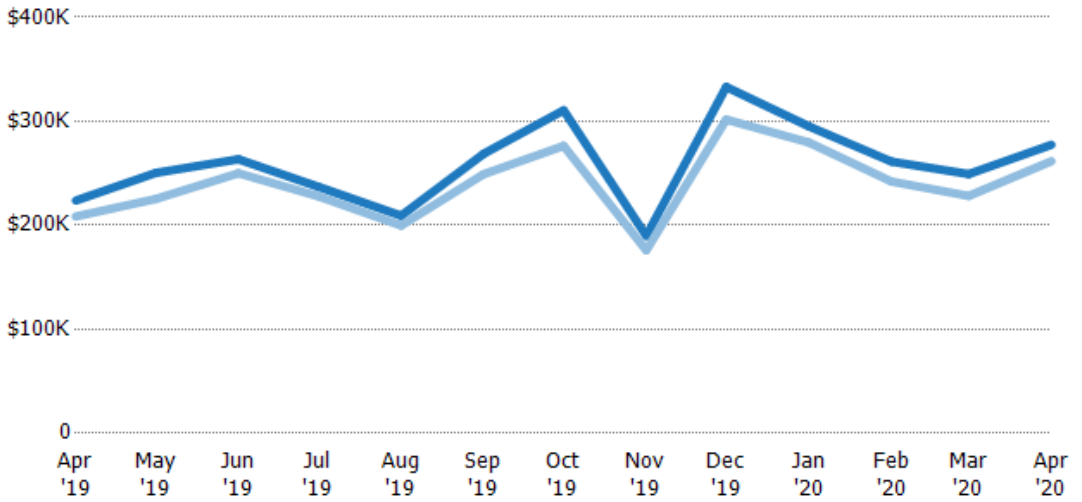
	Apr '19	May '19	Jun '19	Jul '19	Aug '19	Sep '19	Oct '19	Nov '19	Dec '19	Jan '20	Feb '20	Mar '20	Apr '20
Current Year	\$195K	\$210K	\$219K	\$217K	\$211K	\$207K	\$198K	\$164K	\$279K	\$275K	\$198K	\$190K	\$248K
Prior Year	\$261K	\$213K	\$209K	\$198K	\$150K	\$163K	\$181K	\$180K	\$160K	\$190K	\$187K	\$277K	\$195K
Percent Change from Prior Year	-25%	-1%	5%	10%	41%	27%	9%	-9%	74%	45%	6%	-31%	27%

## Average Sales Price vs Average Listing Price

The average sales price as a percentage of the average listing price for properties sold each month.

### Filters Used

ZIP: East Dover, VT 05341, South Newfane, VT 05351, Wardsboro, VT 05355, West Dover, VT 05356, Wilmington, VT 05363  
 Property Type: Condo/Townhouse/Apt, Single Family Residence



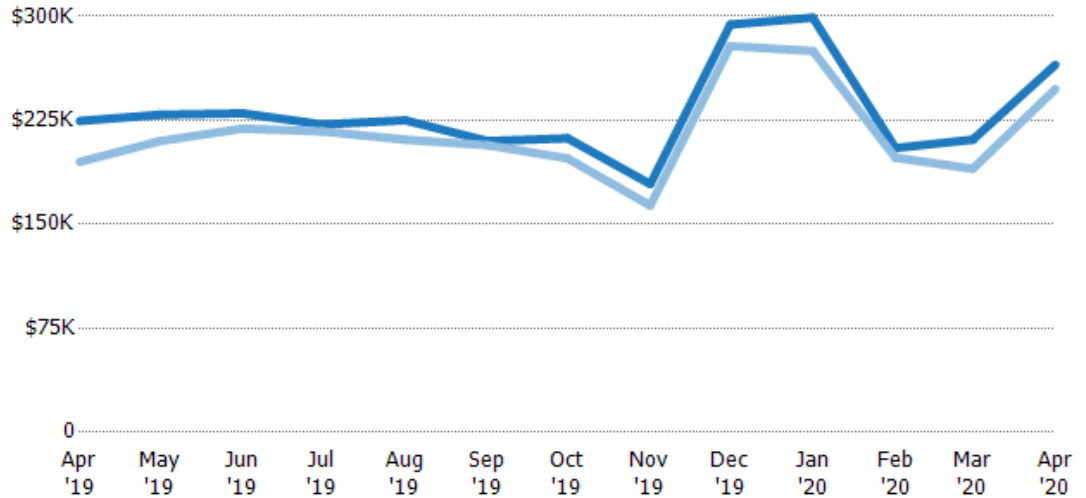
	Apr '19	May '19	Jun '19	Jul '19	Aug '19	Sep '19	Oct '19	Nov '19	Dec '19	Jan '20	Feb '20	Mar '20	Apr '20
Avg List Price	\$224K	\$250K	\$263K	\$237K	\$209K	\$269K	\$311K	\$190K	\$333K	\$295K	\$261K	\$249K	\$277K
Avg Sales Price	\$209K	\$225K	\$250K	\$228K	\$200K	\$249K	\$276K	\$176K	\$302K	\$280K	\$242K	\$228K	\$262K
Avg Sales Price as a % of Avg List Price	93%	90%	95%	96%	95%	93%	89%	93%	91%	95%	93%	92%	94%

## Median Sales Price vs Median Listing Price

The median sales price as a percentage of the median listing price for properties sold each month.

### Filters Used

ZIP: East Dover, VT 05341, South Newfane, VT 05351, Wardsboro, VT 05355, West Dover, VT 05356, Wilmington, VT 05363  
 Property Type: Condo/Townhouse/Apt, Single Family Residence



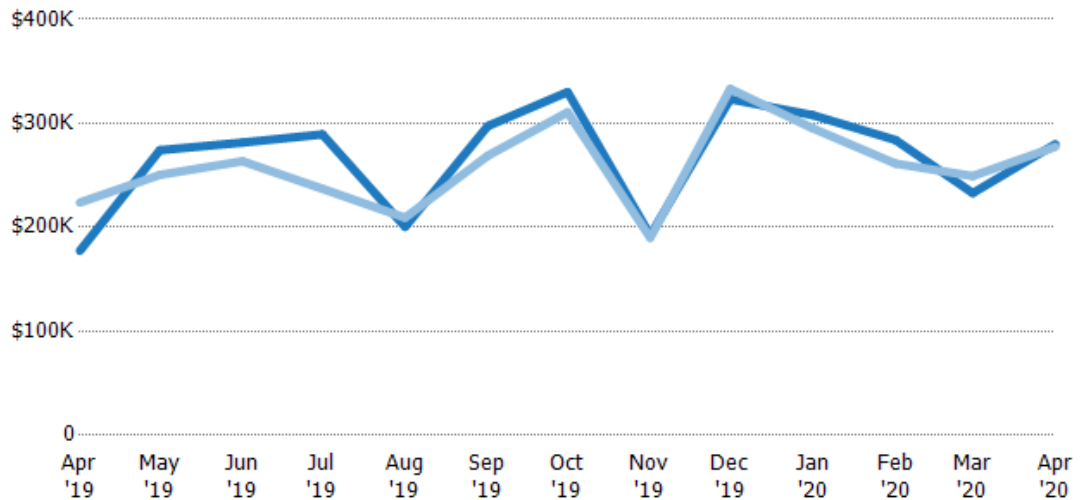
	Apr '19	May '19	Jun '19	Jul '19	Aug '19	Sep '19	Oct '19	Nov '19	Dec '19	Jan '20	Feb '20	Mar '20	Apr '20
Median List Price	\$225K	\$229K	\$230K	\$222K	\$225K	\$210K	\$212K	\$179K	\$294K	\$299K	\$205K	\$211K	\$265K
Median Sales Price	\$195K	\$210K	\$219K	\$217K	\$211K	\$207K	\$198K	\$164K	\$279K	\$275K	\$198K	\$190K	\$248K
Med Sales Price as a % of Med List Price	87%	92%	95%	98%	94%	99%	93%	91%	95%	92%	97%	90%	93%

## Average Sales Price vs Average Est Value

The average sales price as a percentage of the average AVM or RVM® valuation estimate for properties sold each month.

### Filters Used

ZIP: East Dover, VT 05341, South Newfane, VT 05351, Wardsboro, VT 05355, West Dover, VT 05356, Wilmington, VT 05363  
 Property Type: Condo/Townhouse/Apt, Single Family Residence



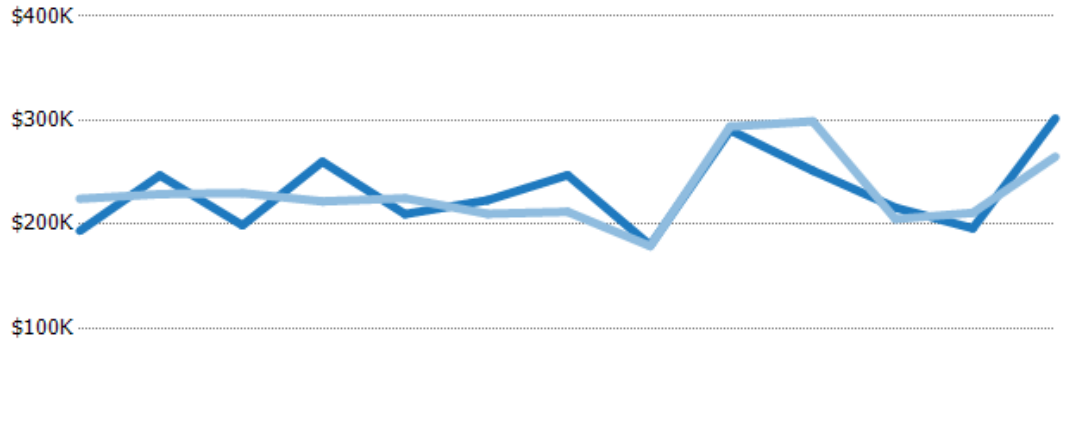
	Apr '19	May '19	Jun '19	Jul '19	Aug '19	Sep '19	Oct '19	Nov '19	Dec '19	Jan '20	Feb '20	Mar '20	Apr '20
Avg Est Value	\$177K	\$274K	\$281K	\$289K	\$200K	\$297K	\$330K	\$192K	\$323K	\$308K	\$284K	\$233K	\$280K
Avg Sales Price	\$224K	\$250K	\$263K	\$237K	\$209K	\$269K	\$311K	\$190K	\$333K	\$295K	\$261K	\$249K	\$277K
Avg Sales Price as a % of Avg Est Value	126%	91%	94%	82%	104%	90%	94%	99%	103%	96%	92%	107%	99%

## Median Sales Price vs Median Est Value

The median sales price as a percent of the median AVM or RVM® valuation estimate for properties sold each month.

### Filters Used

ZIP: East Dover, VT 05341, South Newfane, VT 05351, Wardsboro, VT 05355, West Dover, VT 05356, Wilmington, VT 05363  
 Property Type:  
 Condo/Townhouse/Apt, Single Family Residence



	Apr '19	May '19	Jun '19	Jul '19	Aug '19	Sep '19	Oct '19	Nov '19	Dec '19	Jan '20	Feb '20	Mar '20	Apr '20
Median Est Value	\$194K	\$247K	\$199K	\$260K	\$210K	\$223K	\$247K	\$180K	\$291K	\$252K	\$216K	\$196K	\$302K
Median Sales Price	\$225K	\$229K	\$230K	\$222K	\$225K	\$210K	\$212K	\$179K	\$294K	\$299K	\$205K	\$211K	\$265K
Med Sales Price as a % of Med Est Value	116%	93%	116%	85%	107%	94%	86%	100%	101%	119%	95%	108%	88%