

Summary of Key Listing and Sales Metrics

A summary of the key metrics selected to be included in the report. MLS sources where licensed.

Key Metrics	Apr 2020	Apr 2019	+ / -	YTD 2020	YTD 2019	+ / -
Listing Activity Charts Metrics						
New Listing Count	23	58	-60.3%	141	182	-22.5%
New Listing Volume	\$9,518,460	\$20,140,200	-52.7%	\$54,285,320	\$62,348,628	-12.9%
Active Listing Count	256	387	-33.9%	N/A	N/A	
Active Listing Volume	\$125,438,100	\$161,153,515	-22.2%	N/A	N/A	
Average Listing Price	\$489,993	\$416,417	+17.7%	\$467,144	\$422,470	+10.6%
Median Listing Price	\$325,000	\$289,000	+12.5%	\$316,431	\$292,061	+8.3%
Median Days in RPR	200.5	236	-15%	198.28	228.14	-13.1%
Months of Inventory	9.8	11.4	-13.5%	10.9	16.7	-34.8%
Absorption Rate	10.16%	8.79%	+1.4%	9.2%	6%	+3.2%
Sales Activity Charts Metrics						
New Pending Sales Count	26	43	-39.5%	153	165	-7.3%
New Pending Sales Volume	\$5,672,460	\$13,482,000	-57.9%	\$42,866,911	\$46,117,099	-7%
Pending Sales Count	62	66	-6.1%	N/A	N/A	
Pending Sales Volume	\$16,525,160	\$21,066,300	-21.6%	N/A	N/A	
Closed Sales Count	25	40	-37.5%	104	109	-4.6%
Closed Sales Volume	\$7,276,500	\$9,617,400	-24.3%	\$32,839,093	\$25,661,800	+28%
Average Sales Price	\$291,060	\$240,435	+21.1%	\$315,761	\$235,429	+34.1%
Median Sales Price	\$276,000	\$202,500	+36.3%	\$261,779	\$193,358	+35.4%

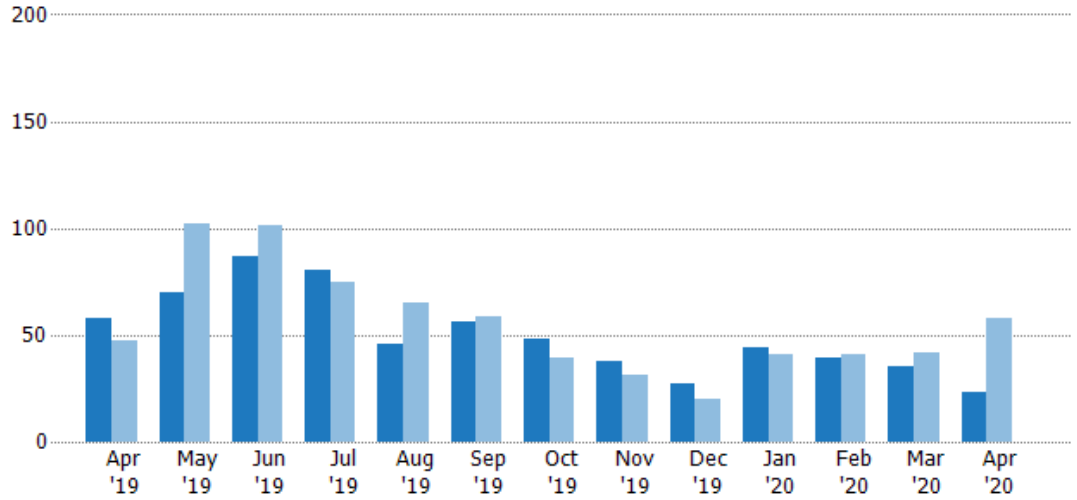
New Listings

The number of new residential listings that were added each month.

Filters Used

State: VT
 County: Bennington County, Vermont
 Property Type: Condo/Townhouse/Apt, Single Family Residence

Month/Year	Count	% Chg.
Apr '20	23	-60.3%
Apr '19	58	23.4%
Apr '18	47	0%



Current Year	58	70	87	80	46	56	48	38	27	44	39	35	23
Prior Year	47	102	101	75	65	59	39	31	20	41	41	42	58
Percent Change from Prior Year	23%	-31%	-14%	7%	-29%	-5%	23%	23%	35%	7%	-5%	-17%	-60%

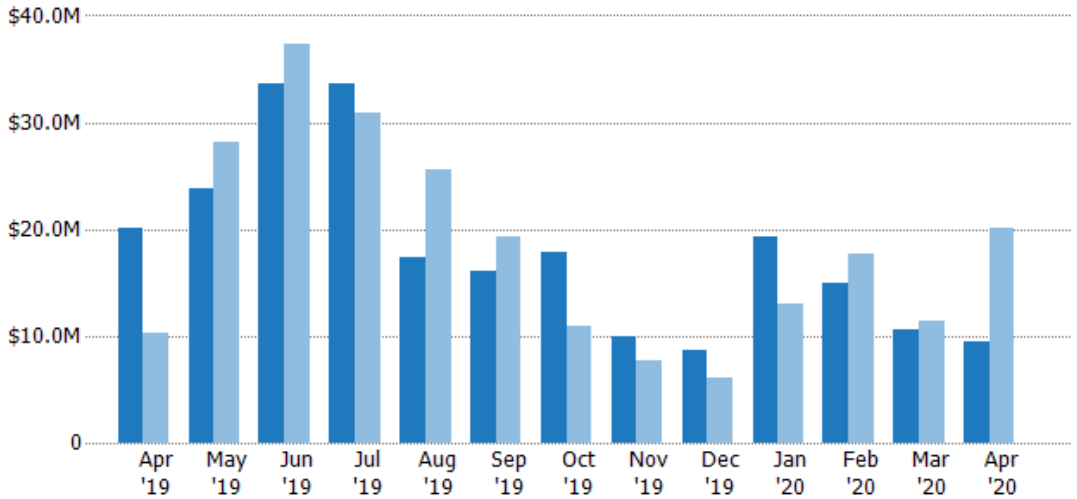
New Listing Volume

The sum of the listing price of residential listings that were added each month.

Filters Used

State: VT
 County: Bennington County, Vermont
 Property Type: Condo/Townhouse/Apt, Single Family Residence

Month/Year	Volume	% Chg.
Apr '20	\$9.52M	-52.7%
Apr '19	\$20.1M	94.8%
Apr '18	\$10.3M	35.4%



Current Year	\$20.1M	\$23.8M	\$33.6M	\$33.6M	\$17.4M	\$16.1M	\$17.9M	\$10M	\$8.7M	\$19.2M	\$15M	\$10.5M	\$9.52M
Prior Year	\$10.3M	\$28.2M	\$37.3M	\$30.9M	\$25.6M	\$19.3M	\$11M	\$7.66M	\$6.02M	\$13.1M	\$17.7M	\$11.4M	\$20.1M
Percent Change from Prior Year	95%	-16%	-10%	9%	-32%	-17%	63%	31%	44%	47%	-15%	-8%	-53%

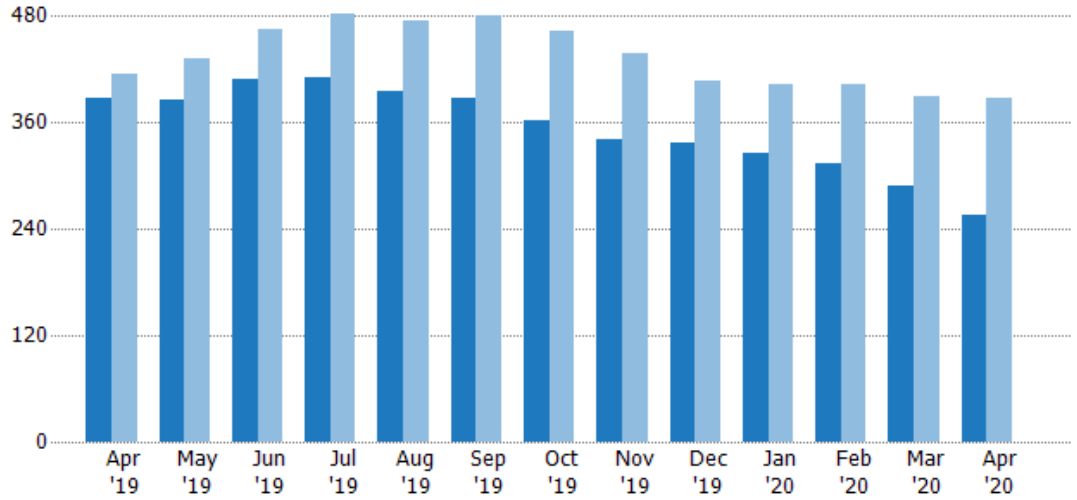
Active Listings

The number of active residential listings at the end of each month.

Filters Used

State: VT
 County: Bennington County, Vermont
 Property Type: Condo/Townhouse/Apt, Single Family Residence

Month/Year	Count	% Chg.
Apr '20	256	-33.9%
Apr '19	387	-6.5%
Apr '18	414	-5.6%



	Apr '19	May '19	Jun '19	Jul '19	Aug '19	Sep '19	Oct '19	Nov '19	Dec '19	Jan '20	Feb '20	Mar '20	Apr '20
Current Year	387	386	408	410	396	388	362	341	338	326	314	289	256
Prior Year	414	433	465	482	474	481	463	438	406	404	404	389	387
Percent Change from Prior Year	-7%	-11%	-12%	-15%	-16%	-19%	-22%	-22%	-17%	-19%	-22%	-26%	-34%

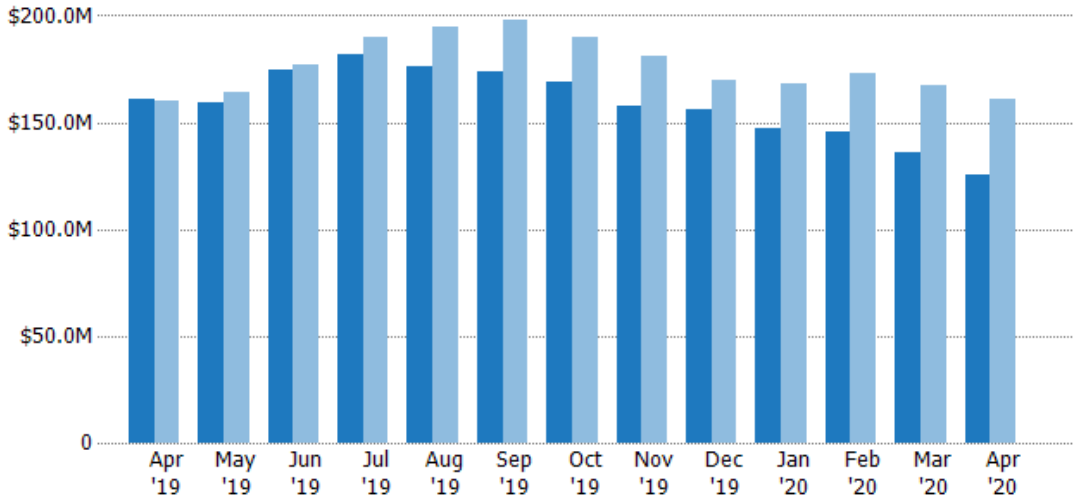
Active Listing Volume

The sum of the listing price of active residential listings at the end of each month.

Filters Used

State: VT
 County: Bennington County, Vermont
 Property Type: Condo/Townhouse/Apt, Single Family Residence

Month/Year	Volume	% Chg.
Apr '20	\$125M	-22.2%
Apr '19	\$161M	0.6%
Apr '18	\$160M	-1.2%



	Apr '19	May '19	Jun '19	Jul '19	Aug '19	Sep '19	Oct '19	Nov '19	Dec '19	Jan '20	Feb '20	Mar '20	Apr '20
Current Year	\$161M	\$159M	\$174M	\$182M	\$176M	\$174M	\$169M	\$158M	\$156M	\$147M	\$145M	\$136M	\$125M
Prior Year	\$160M	\$164M	\$177M	\$190M	\$194M	\$198M	\$190M	\$181M	\$170M	\$168M	\$173M	\$167M	\$161M
Percent Change from Prior Year	1%	-3%	-2%	-4%	-9%	-12%	-11%	-13%	-8%	-12%	-16%	-19%	-22%

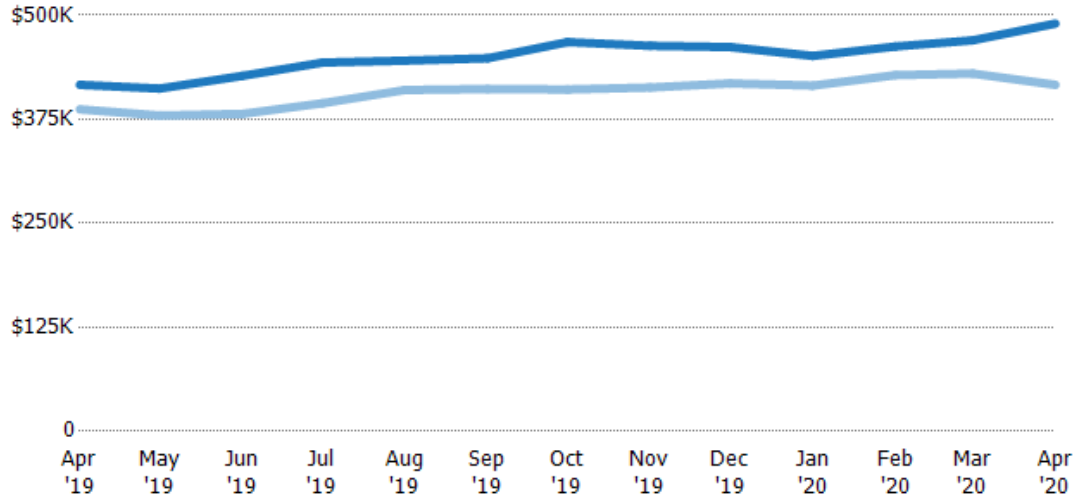
Average Listing Price

The average listing price of active residential listings at the end of each month.

Filters Used

State: VT
 County: Bennington County, Vermont
 Property Type: Condo/Townhouse/Apt, Single Family Residence

Month/Year	Price	% Chg.
Apr '20	\$490K	17.7%
Apr '19	\$416K	7.6%
Apr '18	\$387K	4.6%



Current Year	\$416K	\$412K	\$427K	\$443K	\$445K	\$448K	\$468K	\$463K	\$462K	\$451K	\$462K	\$470K	\$490K
Prior Year	\$387K	\$380K	\$381K	\$394K	\$410K	\$411K	\$411K	\$413K	\$418K	\$415K	\$428K	\$430K	\$416K
Percent Change from Prior Year	8%	9%	12%	12%	9%	9%	14%	12%	10%	9%	8%	9%	18%

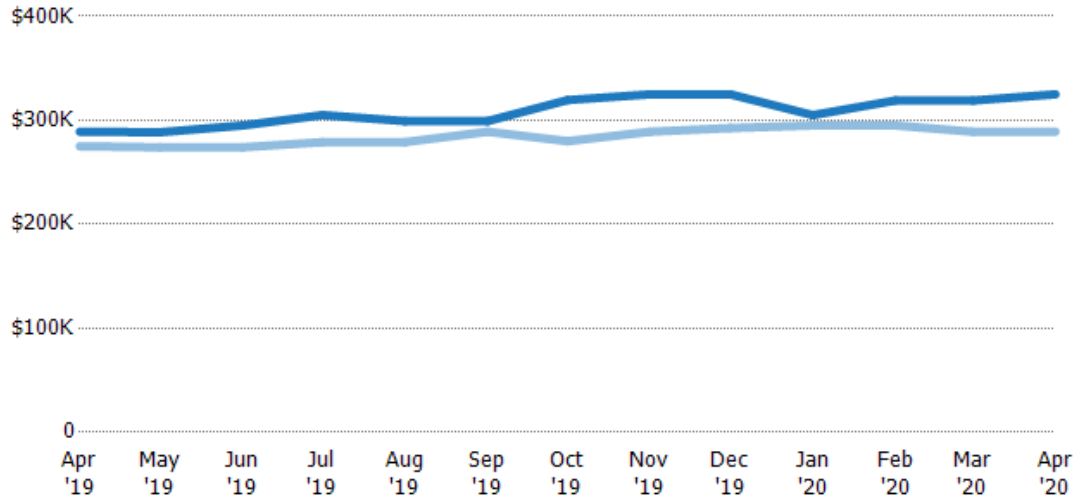
Median Listing Price

The median listing price of active residential listings at the end of each month.

Filters Used

State: VT
 County: Bennington County, Vermont
 Property Type: Condo/Townhouse/Apt, Single Family Residence

Month/Year	Price	% Chg.
Apr '20	\$325K	12.5%
Apr '19	\$289K	5.1%
Apr '18	\$275K	3.6%



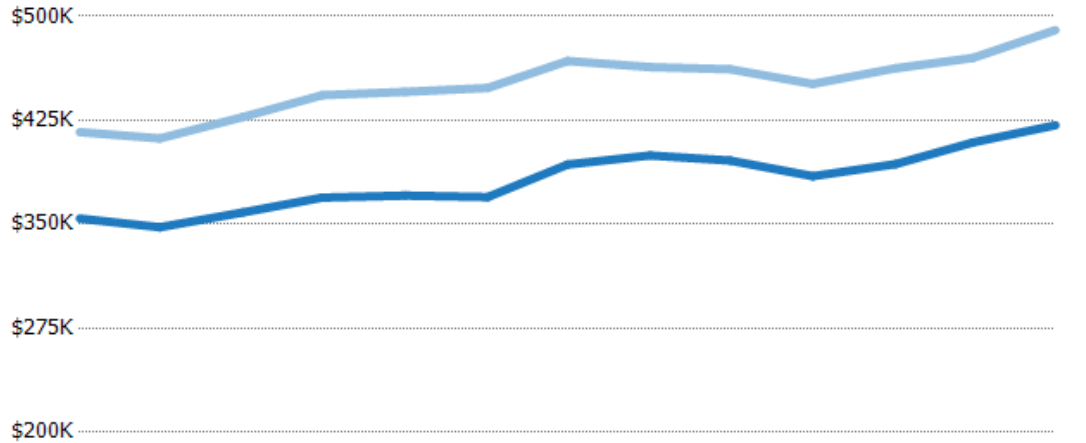
Current Year	\$289K	\$289K	\$295K	\$305K	\$299K	\$299K	\$319K	\$325K	\$325K	\$305K	\$319K	\$319K	\$325K
Prior Year	\$275K	\$274K	\$274K	\$279K	\$279K	\$289K	\$280K	\$289K	\$293K	\$295K	\$295K	\$289K	\$289K
Percent Change from Prior Year	5%	5%	8%	9%	7%	4%	14%	12%	11%	3%	8%	10%	12%

Average Listing Price vs Average Est Value

The average listing price as a percentage of the average AVM or RVM® valuation estimate for active listings each month.

Filters Used

State: VT
 County: Bennington County,
 Vermont
 Property Type:
 Condo/Townhouse/Apt, Single
 Family Residence



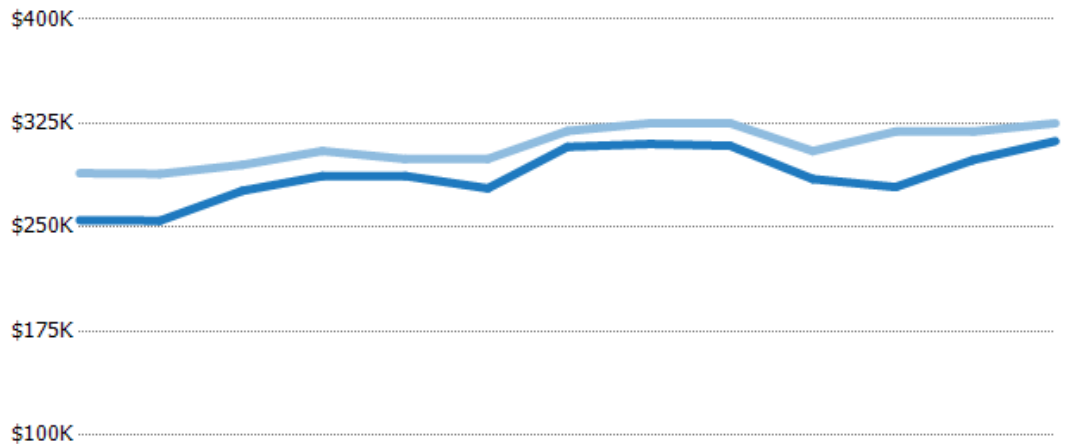
	Apr '19	May '19	Jun '19	Jul '19	Aug '19	Sep '19	Oct '19	Nov '19	Dec '19	Jan '20	Feb '20	Mar '20	Apr '20
Avg Est Value	\$354K	\$348K	\$359K	\$369K	\$371K	\$370K	\$393K	\$400K	\$396K	\$385K	\$393K	\$409K	\$421K
Avg Listing Price	\$416K	\$412K	\$427K	\$443K	\$445K	\$448K	\$468K	\$463K	\$462K	\$451K	\$462K	\$470K	\$490K
Avg Listing Price as a % of Avg Est Value	118%	118%	119%	120%	120%	121%	119%	116%	117%	117%	118%	115%	116%

Median Listing Price vs Median Est Value

The median listing price as a percentage of the median AVM or RVM® valuation estimate for active listings each month.

Filters Used

State: VT
 County: Bennington County,
 Vermont
 Property Type:
 Condo/Townhouse/Apt, Single
 Family Residence



	Apr '19	May '19	Jun '19	Jul '19	Aug '19	Sep '19	Oct '19	Nov '19	Dec '19	Jan '20	Feb '20	Mar '20	Apr '20
Median Est Value	\$255K	\$255K	\$276K	\$287K	\$287K	\$278K	\$308K	\$310K	\$309K	\$285K	\$279K	\$298K	\$312K
Median Listing Price	\$289K	\$289K	\$295K	\$305K	\$299K	\$299K	\$319K	\$325K	\$325K	\$305K	\$319K	\$319K	\$325K
Med Listing Price as a % of Med Est Value	113%	113%	107%	106%	104%	108%	104%	105%	105%	107%	114%	107%	104%

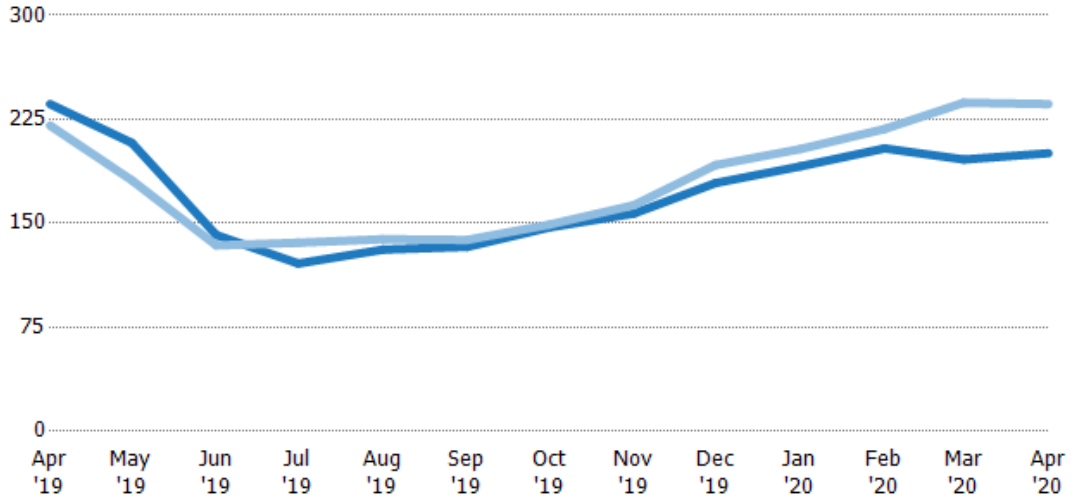
Median Days in RPR

The median number of days between when residential properties are first displayed as active listings in RPR and when accepted offers have been noted in RPR.

Filters Used

State: VT
 County: Bennington County, Vermont
 Property Type: Condo/Townhouse/Apt, Single Family Residence

Month/Year	Days	% Chg.
Apr '20	201	-15%
Apr '19	236	7%
Apr '18	221	5.7%



	Apr '19	May '19	Jun '19	Jul '19	Aug '19	Sep '19	Oct '19	Nov '19	Dec '19	Jan '20	Feb '20	Mar '20	Apr '20
Current Year	236	208	142	121	131	133	147	157	179	191	204	196	201
Prior Year	221	181	134	136	139	138	149	163	192	204	218	237	236
Percent Change from Prior Year	7%	15%	6%	-11%	-5%	-4%	-1%	-4%	-7%	-6%	-6%	-17%	-15%

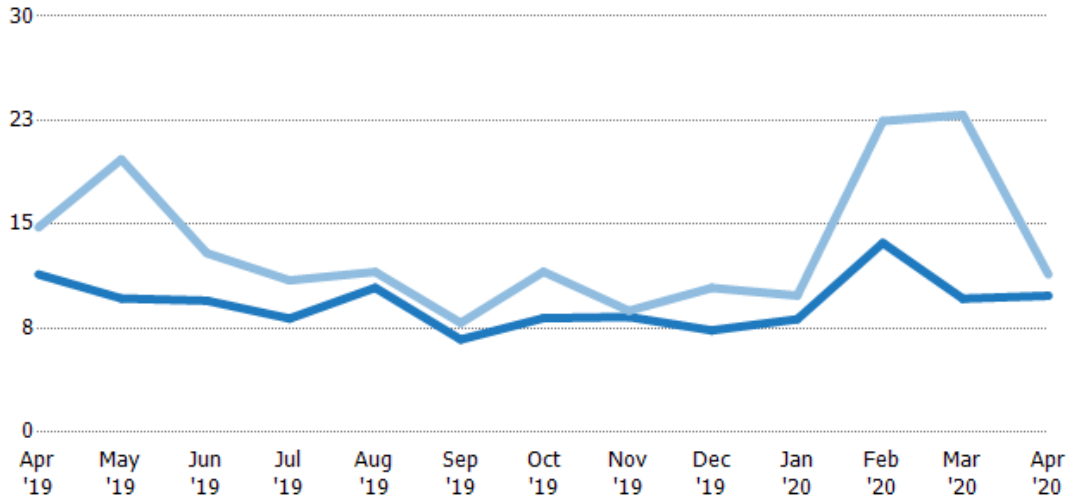
Months of Inventory

The number of months it would take to exhaust active listings at the current sales rate.

Filters Used

State: VT
 County: Bennington County, Vermont
 Property Type: Condo/Townhouse/Apt, Single Family Residence

Month/Year	Months	% Chg.
Apr '20	9.85	-13.5%
Apr '19	11.4	-23%
Apr '18	14.8	-8.8%



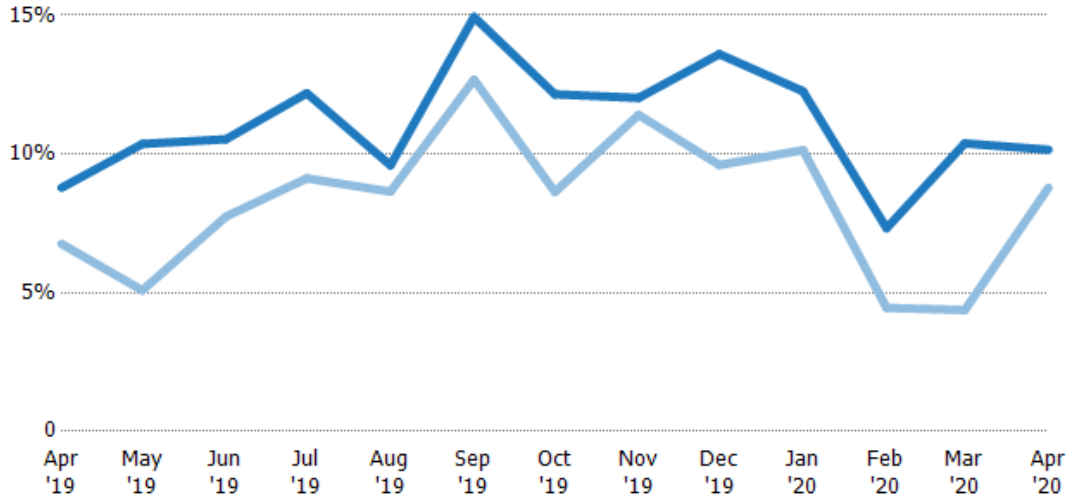
	Apr '19	May '19	Jun '19	Jul '19	Aug '19	Sep '19	Oct '19	Nov '19	Dec '19	Jan '20	Feb '20	Mar '20	Apr '20
Current Year	11.4	9.65	9.49	8.2	10.4	6.69	8.23	8.32	7.35	8.15	13.7	9.63	9.85
Prior Year	14.8	19.7	12.9	11	11.6	7.89	11.6	8.76	10.4	9.85	22.4	22.9	11.4
Percent Change from Prior Year	-23%	-51%	-27%	-25%	-10%	-15%	-29%	-5%	-29%	-17%	-39%	-58%	-13%

Absorption Rate

The percentage of inventory sold per month.

Filters Used

State: VT
 County: Bennington County, Vermont
 Property Type: Condo/Townhouse/Apt, Single Family Residence



Month/Year	Rate	Chg.
Apr '20	10%	-1.4%
Apr '19	9%	-2%
Apr '18	7%	9.6%

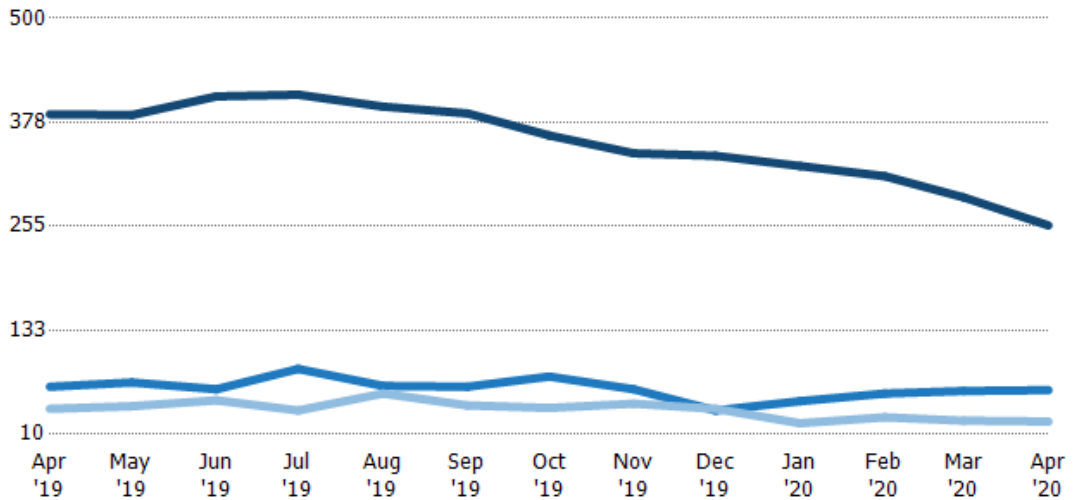
	Apr '19	May '19	Jun '19	Jul '19	Aug '19	Sep '19	Oct '19	Nov '19	Dec '19	Jan '20	Feb '20	Mar '20	Apr '20
Current Year	9%	10%	11%	12%	10%	15%	12%	12%	14%	12%	7%	10%	10%
Prior Year	7%	5%	8%	9%	9%	13%	9%	11%	10%	10%	4%	4%	9%
Change from Prior Year	-2%	-5%	-3%	-3%	-1%	-2%	-4%	-1%	-4%	-2%	-3%	-6%	-1%

Active/Pending/Sold Units

The number of residential properties that were Active, Pending and Sold each month.

Filters Used

State: VT
 County: Bennington County, Vermont
 Property Type: Condo/Townhouse/Apt, Single Family Residence



	Apr '19	May '19	Jun '19	Jul '19	Aug '19	Sep '19	Oct '19	Nov '19	Dec '19	Jan '20	Feb '20	Mar '20	Apr '20
Active	387	386	408	410	396	388	362	341	338	326	314	289	256
Pending	66	71	63	87	67	66	78	63	38	49	58	61	62
Sold	40	43	50	38	58	44	41	46	40	23	30	26	25

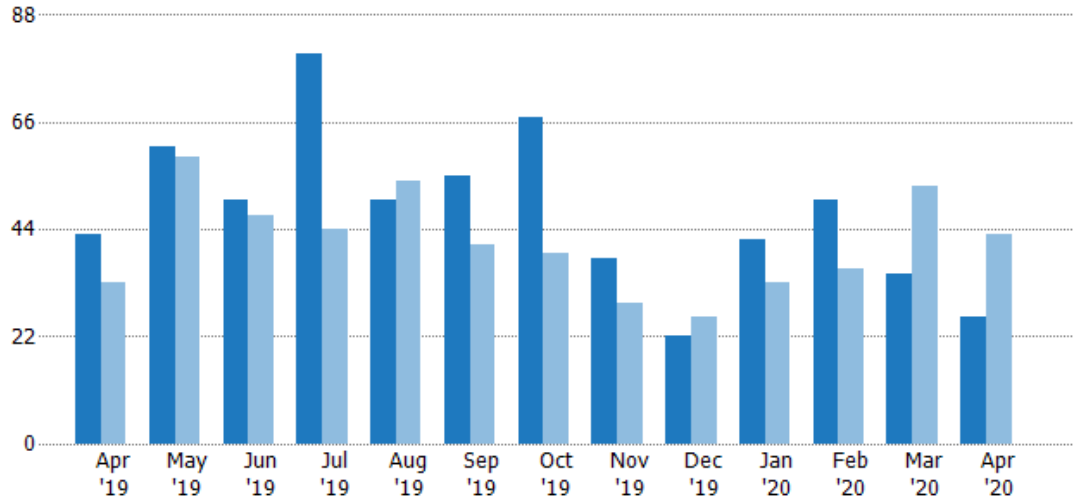
New Pending Sales

The number of residential properties with accepted offers that were added each month.

Filters Used

State: VT
 County: Bennington County, Vermont
 Property Type: Condo/Townhouse/Apt, Single Family Residence

Month/Year	Count	% Chg.
Apr '20	26	-39.5%
Apr '19	43	30.3%
Apr '18	33	9.1%



Current Year	43	61	50	80	50	55	67	38	22	42	50	35	26
Prior Year	33	59	47	44	54	41	39	29	26	33	36	53	43
Percent Change from Prior Year	30%	3%	6%	82%	-7%	34%	72%	31%	-15%	27%	39%	-34%	-40%

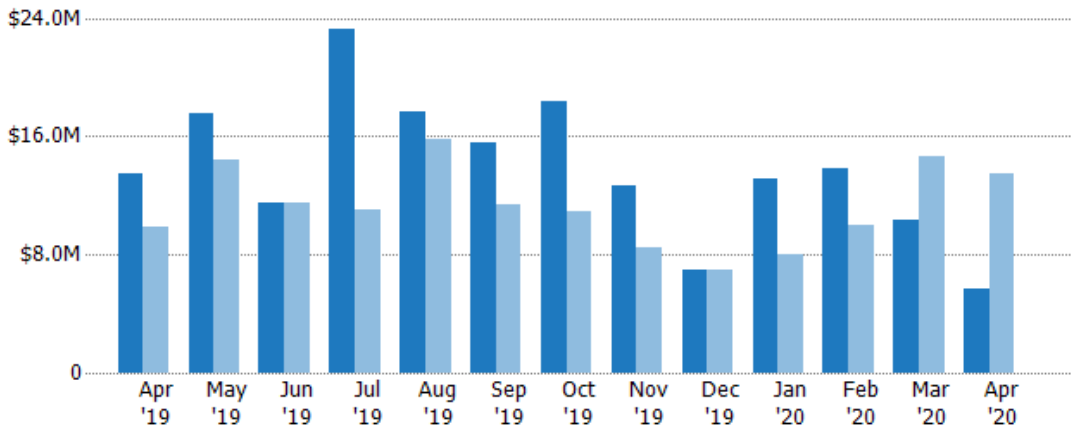
New Pending Sales Volume

The sum of the sales price of residential properties with accepted offers that were added each month.

Filters Used

State: VT
 County: Bennington County, Vermont
 Property Type: Condo/Townhouse/Apt, Single Family Residence

Month/Year	Volume	% Chg.
Apr '20	\$5.67M	-57.9%
Apr '19	\$13.5M	36.6%
Apr '18	\$9.87M	-13.6%



Current Year	\$13.5M	\$17.5M	\$11.5M	\$23.2M	\$17.7M	\$15.5M	\$18.3M	\$12.7M	\$6.93M	\$13.1M	\$13.8M	\$10.3M	\$5.67M
Prior Year	\$9.87M	\$14.4M	\$11.5M	\$11.1M	\$15.8M	\$11.4M	\$10.9M	\$8.44M	\$7.01M	\$8.01M	\$10M	\$14.6M	\$13.5M
Percent Change from Prior Year	37%	21%	0%	110%	12%	36%	68%	51%	-1%	63%	38%	-29%	-58%

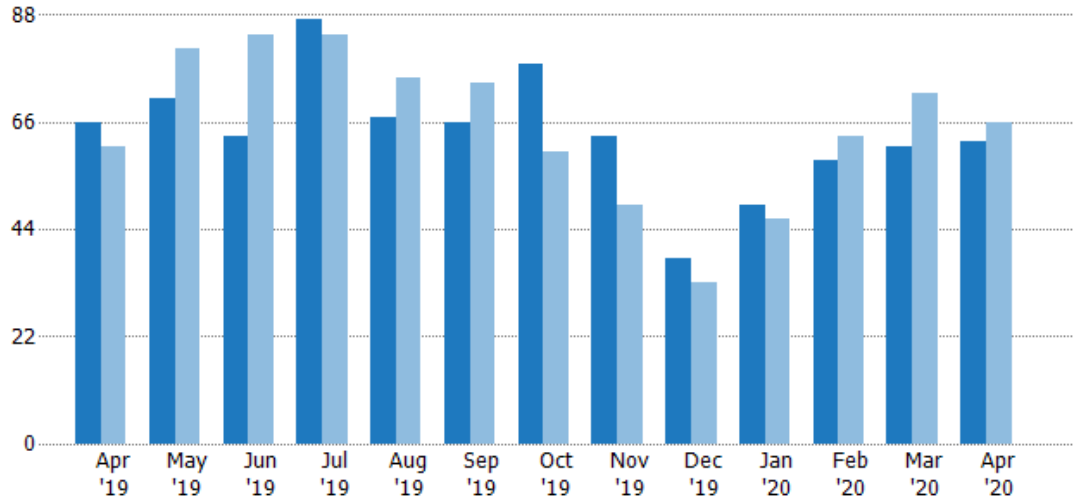
Pending Sales

The number of residential properties with accepted offers that were available at the end each month.

Filters Used

State: VT
 County: Bennington County, Vermont
 Property Type: Condo/Townhouse/Apt, Single Family Residence

Month/Year	Count	% Chg.
Apr '20	62	-6.1%
Apr '19	66	8.2%
Apr '18	61	-8.2%



Current Year	66	71	63	87	67	66	78	63	38	49	58	61	62
Prior Year	61	81	84	84	75	74	60	49	33	46	63	72	66
Percent Change from Prior Year	8%	-12%	-25%	4%	-11%	-11%	30%	29%	15%	7%	-8%	-15%	-6%

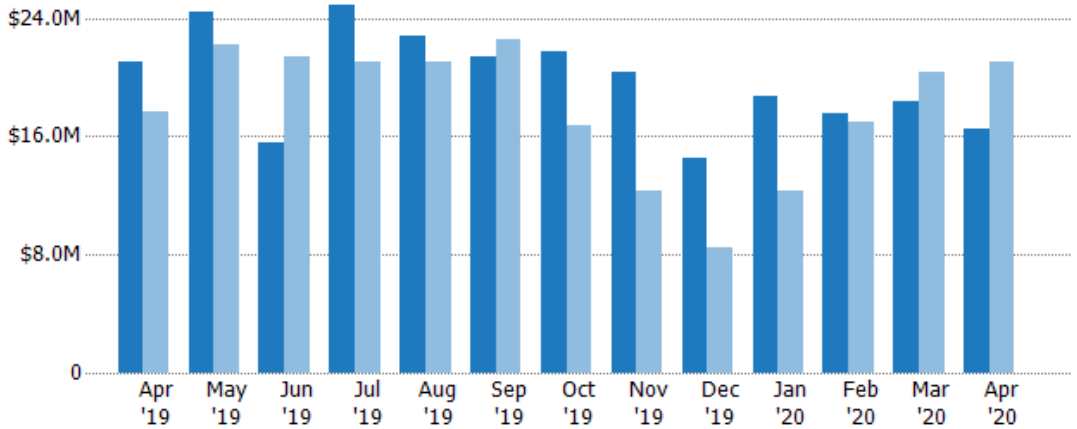
Pending Sales Volume

The sum of the sales price of residential properties with accepted offers that were available at the end of each month.

Filters Used

State: VT
 County: Bennington County, Vermont
 Property Type: Condo/Townhouse/Apt, Single Family Residence

Month/Year	Volume	% Chg.
Apr '20	\$16.5M	-21.6%
Apr '19	\$21.1M	19.4%
Apr '18	\$17.6M	-2.1%



Current Year	\$21.1M	\$24.4M	\$15.5M	\$24.9M	\$22.8M	\$21.4M	\$21.7M	\$20.3M	\$14.5M	\$18.7M	\$17.6M	\$18.3M	\$16.5M
Prior Year	\$17.6M	\$22.2M	\$21.4M	\$21.1M	\$21.1M	\$22.6M	\$16.7M	\$12.3M	\$8.49M	\$12.4M	\$17M	\$20.3M	\$21.1M
Percent Change from Prior Year	19%	10%	-28%	18%	8%	-5%	30%	65%	70%	51%	4%	-10%	-22%

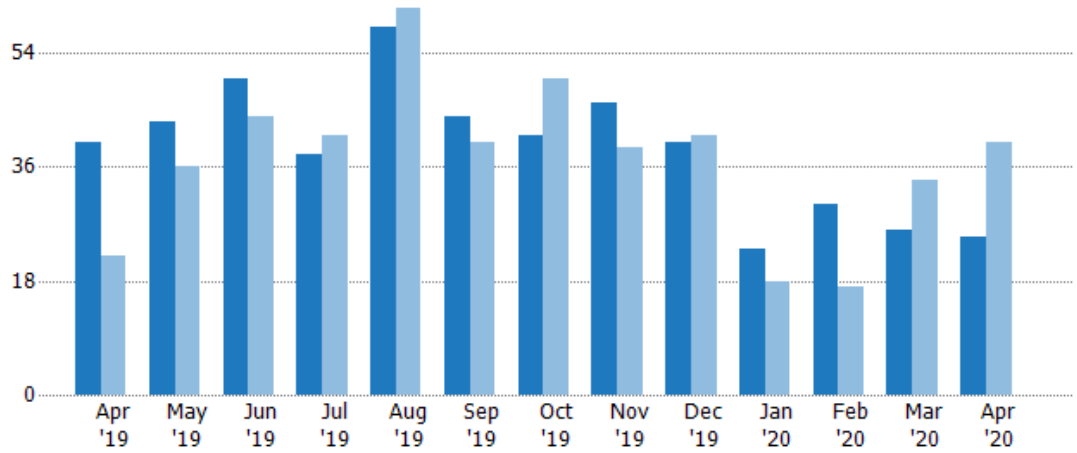
Closed Sales

The total number of residential properties sold each month.

Filters Used

State: VT
 County: Bennington County, Vermont
 Property Type: Condo/Townhouse/Apt, Single Family Residence

Month/Year	Count	% Chg.
Apr '20	25	-37.5%
Apr '19	40	81.8%
Apr '18	22	22.7%



Current Year	40	43	50	38	58	44	41	46	40	23	30	26	25
Prior Year	22	36	44	41	61	40	50	39	41	18	17	34	40
Percent Change from Prior Year	82%	19%	14%	-7%	-5%	10%	-18%	18%	-2%	28%	76%	-24%	-38%

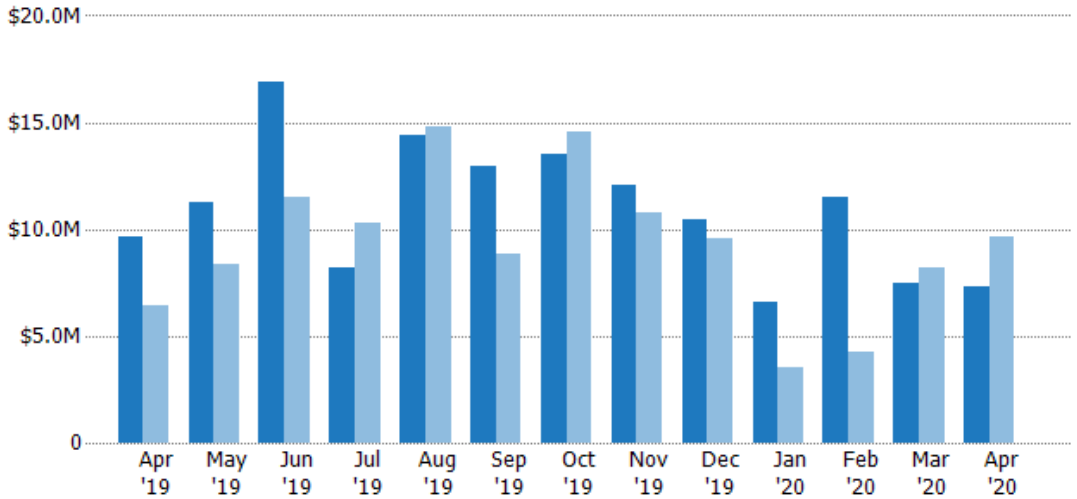
Closed Sales Volume

The sum of the sales price of residential properties sold each month.

Filters Used

State: VT
 County: Bennington County, Vermont
 Property Type: Condo/Townhouse/Apt, Single Family Residence

Month/Year	Volume	% Chg.
Apr '20	\$7.28M	-24.3%
Apr '19	\$9.62M	48.9%
Apr '18	\$6.46M	-6.9%



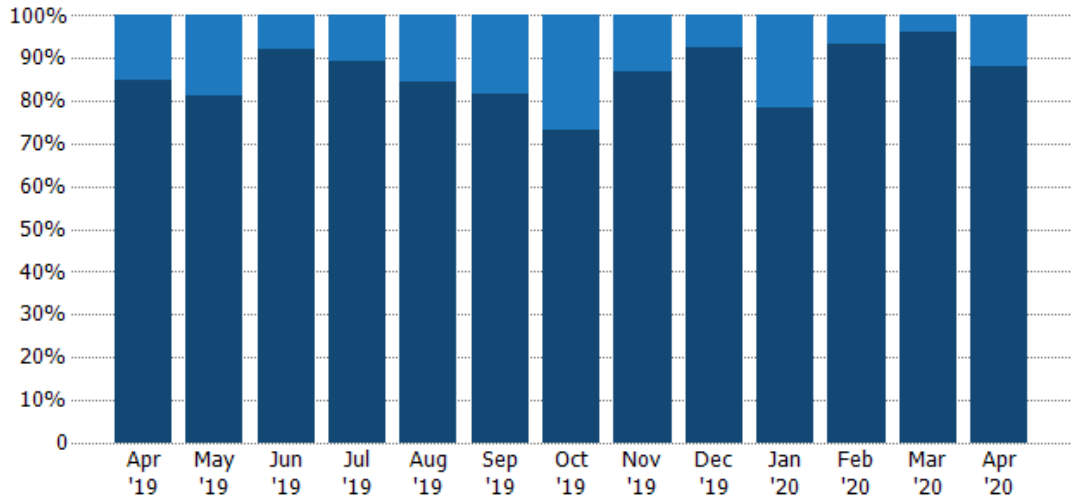
Current Year	\$9.62M	\$11.2M	\$16.9M	\$8.17M	\$14.4M	\$13M	\$13.5M	\$12.1M	\$10.4M	\$6.62M	\$11.5M	\$7.48M	\$7.28M
Prior Year	\$6.46M	\$8.4M	\$11.5M	\$10.3M	\$14.8M	\$8.88M	\$14.6M	\$10.7M	\$9.57M	\$3.53M	\$4.29M	\$8.23M	\$9.62M
Percent Change from Prior Year	49%	34%	47%	-21%	-3%	46%	-8%	12%	9%	88%	167%	-9%	-24%

Closed Sales by Property Type

The percentage of residential properties sold each month by property type.

Filters Used

State: VT
 County: Bennington County, Vermont
 Property Type: Condo/Townhouse/Apt, Single Family Residence



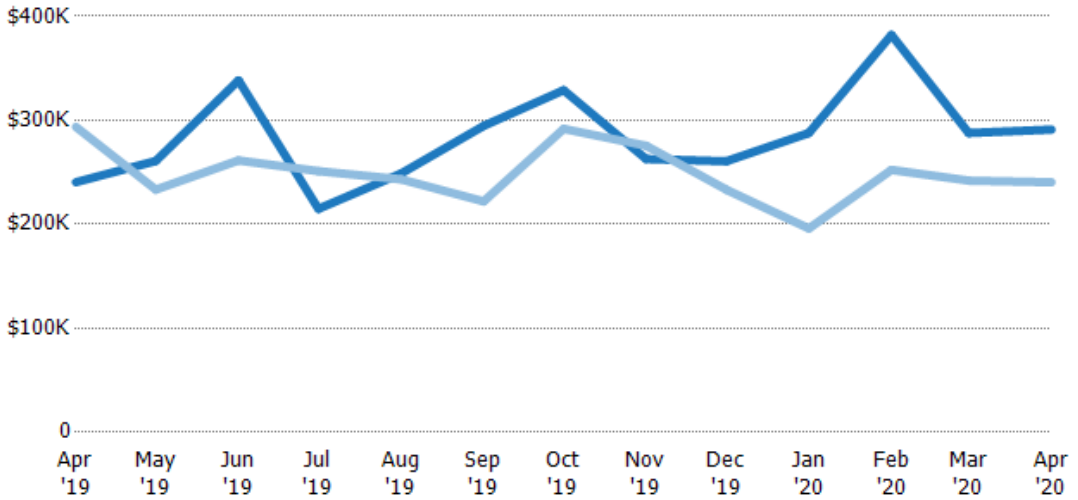
Condo/Townhouse	15%	19%	8%	11%	16%	18%	27%	13%	8%	22%	7%	4%	12%
Single Family Residence	85%	81%	92%	89%	84%	82%	73%	87%	93%	78%	93%	96%	88%

Average Sales Price

The average sales price of the residential properties sold each month.

Filters Used

State: VT
 County: Bennington County, Vermont
 Property Type: Condo/Townhouse/Apt, Single Family Residence



Current Year	\$240K	\$261K	\$338K	\$215K	\$249K	\$295K	\$329K	\$263K	\$261K	\$288K	\$382K	\$288K	\$291K
Prior Year	\$294K	\$233K	\$261K	\$251K	\$243K	\$222K	\$292K	\$275K	\$233K	\$196K	\$252K	\$242K	\$240K
Percent Change from Prior Year	-18%	12%	29%	-14%	2%	33%	13%	-5%	12%	47%	51%	19%	21%

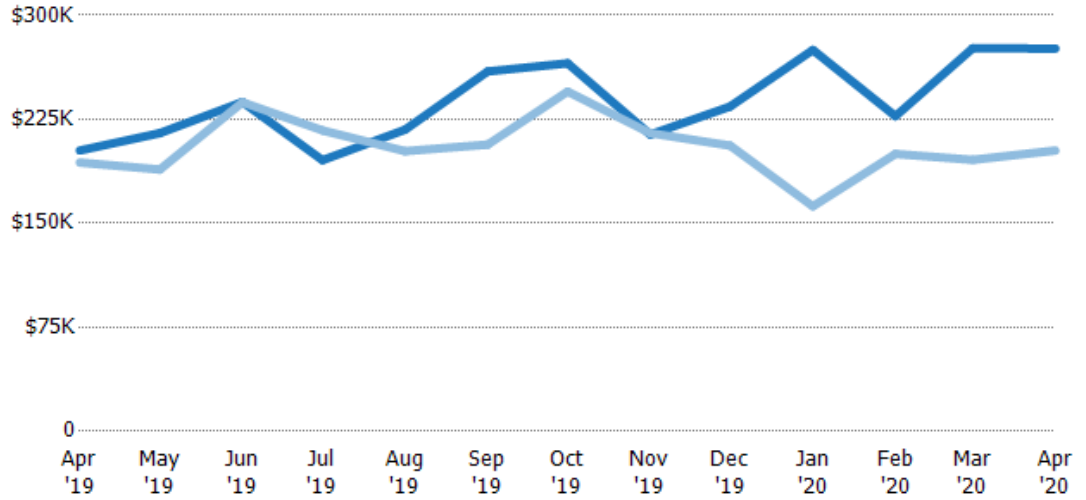
Median Sales Price

The median sales price of the residential properties sold each month.

Filters Used

State: VT
 County: Bennington County, Vermont
 Property Type: Condo/Townhouse/Apt, Single Family Residence

Month/Year	Price	% Chg.
Apr '20	\$276K	36.3%
Apr '19	\$203K	4.5%
Apr '18	\$194K	0.4%



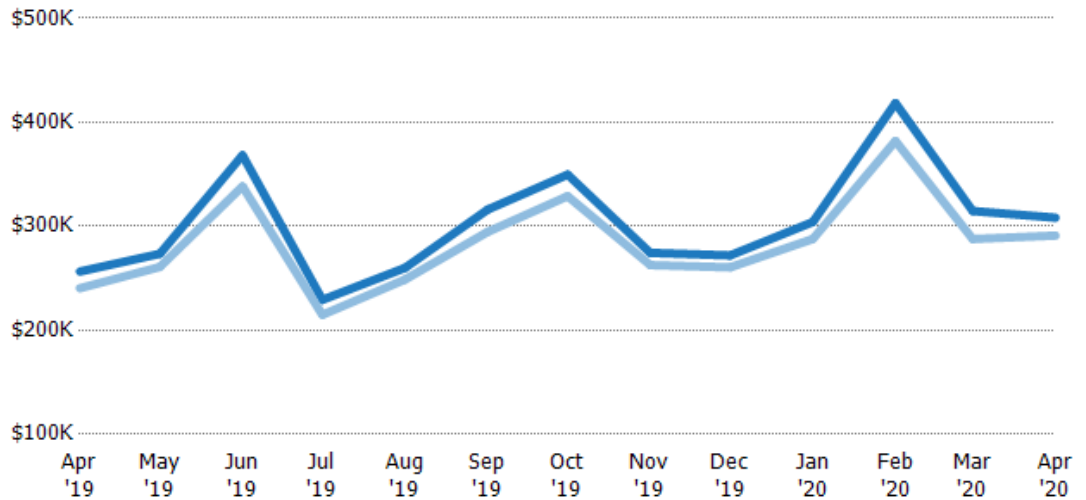
Current Year	\$203K	\$215K	\$238K	\$196K	\$218K	\$260K	\$265K	\$214K	\$234K	\$275K	\$227K	\$276K	\$276K
Prior Year	\$194K	\$189K	\$237K	\$217K	\$202K	\$207K	\$245K	\$215K	\$206K	\$162K	\$200K	\$196K	\$203K
Percent Change from Prior Year	4%	14%	0%	-10%	8%	26%	8%	0%	14%	69%	14%	41%	36%

Average Sales Price vs Average Listing Price

The average sales price as a percentage of the average listing price for properties sold each month.

Filters Used

State: VT
 County: Bennington County, Vermont
 Property Type: Condo/Townhouse/Apt, Single Family Residence



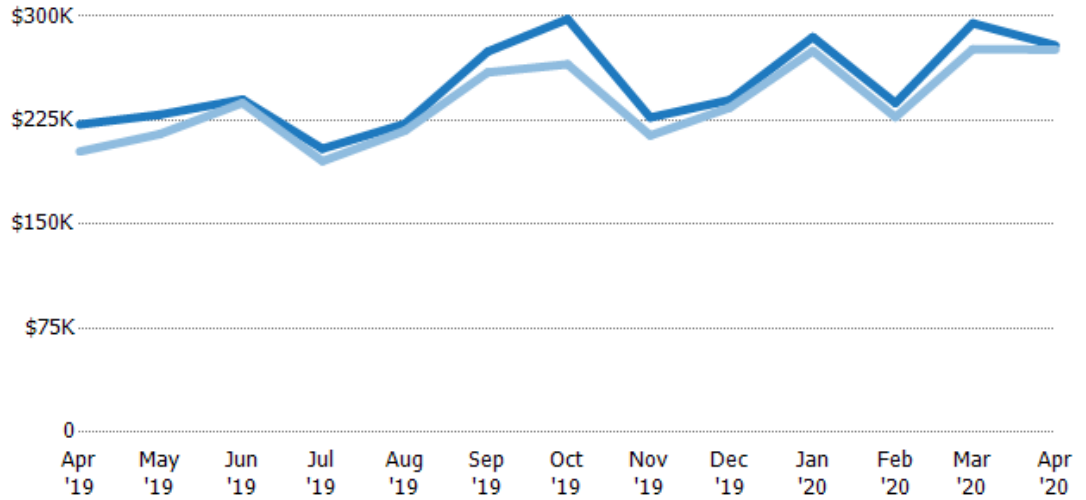
Avg List Price	\$256K	\$274K	\$368K	\$229K	\$260K	\$316K	\$350K	\$274K	\$272K	\$304K	\$418K	\$315K	\$308K
Avg Sales Price	\$240K	\$261K	\$338K	\$215K	\$249K	\$295K	\$329K	\$263K	\$261K	\$288K	\$382K	\$288K	\$291K
Avg Sales Price as a % of Avg List Price	94%	95%	92%	94%	96%	93%	94%	96%	96%	95%	91%	91%	94%

Median Sales Price vs Median Listing Price

The median sales price as a percentage of the median listing price for properties sold each month.

Filters Used

State: VT
 County: Bennington County, Vermont
 Property Type: Condo/Townhouse/Apt, Single Family Residence



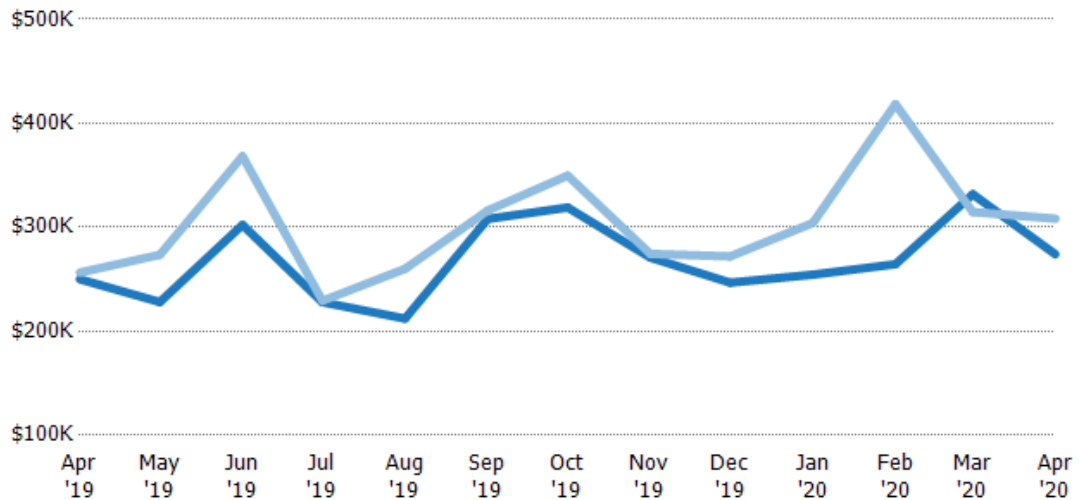
	Apr '19	May '19	Jun '19	Jul '19	Aug '19	Sep '19	Oct '19	Nov '19	Dec '19	Jan '20	Feb '20	Mar '20	Apr '20
Median List Price	\$222K	\$229K	\$240K	\$205K	\$222K	\$275K	\$298K	\$227K	\$240K	\$285K	\$237K	\$295K	\$279K
Median Sales Price	\$203K	\$215K	\$238K	\$196K	\$218K	\$260K	\$265K	\$214K	\$234K	\$275K	\$227K	\$276K	\$276K
Med Sales Price as a % of Med List Price	91%	94%	99%	96%	98%	95%	89%	94%	98%	96%	96%	94%	99%

Average Sales Price vs Average Est Value

The average sales price as a percentage of the average AVM or RVM® valuation estimate for properties sold each month.

Filters Used

State: VT
 County: Bennington County, Vermont
 Property Type: Condo/Townhouse/Apt, Single Family Residence



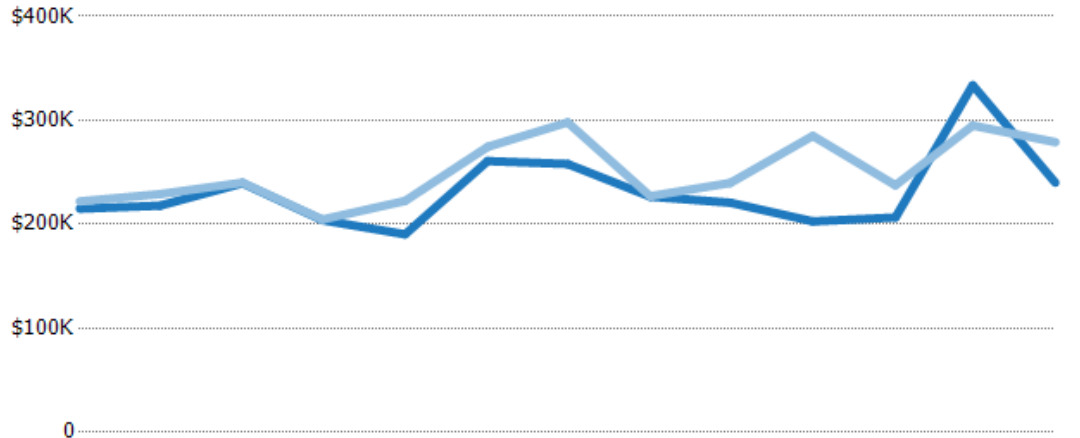
	Apr '19	May '19	Jun '19	Jul '19	Aug '19	Sep '19	Oct '19	Nov '19	Dec '19	Jan '20	Feb '20	Mar '20	Apr '20
Avg Est Value	\$250K	\$228K	\$302K	\$228K	\$212K	\$308K	\$319K	\$271K	\$247K	\$254K	\$264K	\$332K	\$274K
Avg Sales Price	\$256K	\$274K	\$368K	\$229K	\$260K	\$316K	\$350K	\$274K	\$272K	\$304K	\$418K	\$315K	\$308K
Avg Sales Price as a % of Avg Est Value	103%	120%	122%	101%	123%	103%	110%	101%	110%	120%	158%	95%	112%

Median Sales Price vs Median Est Value

The median sales price as a percent of the median AVM or RVM® valuation estimate for properties sold each month.

Filters Used

State: VT
 County: Bennington County, Vermont
 Property Type: Condo/Townhouse/Apt, Single Family Residence



	Apr '19	May '19	Jun '19	Jul '19	Aug '19	Sep '19	Oct '19	Nov '19	Dec '19	Jan '20	Feb '20	Mar '20	Apr '20
Median Est Value	\$215K	\$218K	\$239K	\$204K	\$190K	\$261K	\$258K	\$227K	\$221K	\$203K	\$207K	\$334K	\$240K
Median Sales Price	\$222K	\$229K	\$240K	\$205K	\$222K	\$275K	\$298K	\$227K	\$240K	\$285K	\$237K	\$295K	\$279K
Med Sales Price as a % of Med Est Value	103%	105%	100%	100%	117%	105%	116%	100%	109%	141%	115%	88%	116%