

Summary of Key Listing and Sales Metrics

A summary of the key metrics selected to be included in the report. MLS sources where licensed.

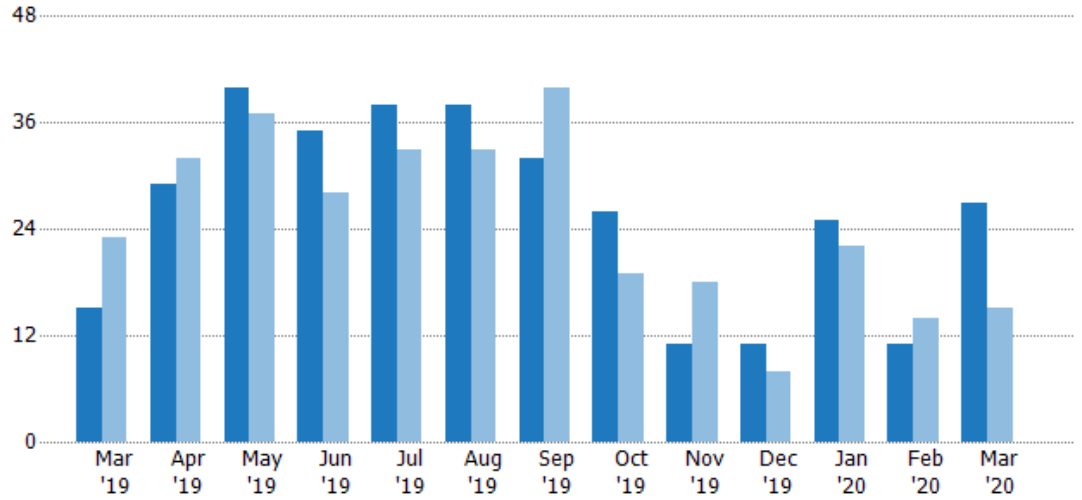
Key Metrics	Mar 2020	Mar 2019	+ / -	YTD 2020	YTD 2019	+ / -
Listing Activity Charts Metrics						
New Listing Count	27	15	+80%	63	51	+23.5%
New Listing Volume	\$10,282,700	\$4,717,500	+118%	\$21,360,300	\$16,162,390	+32.2%
Active Listing Count	39	64	-39.1%	N/A	N/A	
Active Listing Volume	\$15,991,900	\$24,644,116	-35.1%	N/A	N/A	
Average Listing Price	\$410,049	\$385,064	+6.5%	\$383,222	\$368,658	+4%
Median Listing Price	\$417,750	\$369,875	+12.9%	\$382,125	\$357,591	+6.9%
Median Days in RPR	42	184	-77.2%	81.93	154.93	-47.1%
Months of Inventory	2.6	6.4	-59.4%	2.7	4.3	-37.7%
Absorption Rate	38.46%	15.63%	+22.8%	37.5%	23.36%	+14.1%
Sales Activity Charts Metrics						
New Pending Sales Count	23	22	+4.5%	62	48	+29.2%
New Pending Sales Volume	\$6,946,589	\$6,320,290	+9.9%	\$17,736,438	\$14,675,640	+20.9%
Pending Sales Count	30	29	+3.4%	N/A	N/A	
Pending Sales Volume	\$9,181,439	\$9,609,740	-4.5%	N/A	N/A	
Closed Sales Count	16	19	-15.8%	50	45	+11.1%
Closed Sales Volume	\$5,084,599	\$6,136,011	-17.1%	\$15,178,846	\$14,869,897	+2.1%
Average Sales Price	\$317,787	\$322,948	-1.6%	\$303,577	\$330,442	-8.1%
Median Sales Price	\$293,500	\$275,900	+6.4%	\$280,490	\$290,324	-3.4%

New Listings

The number of new residential listings that were added each month.

Filters Used

ZIP: Essex, VT 05451, Essex Junction, VT 05452, Essex Junction, VT 05453
 Property Type: Condo/Townhouse/Apt, Single Family Residence



Month/Year	Count	% Chg.
Mar '20	27	80%
Mar '19	15	-34.8%
Mar '18	23	-4.3%

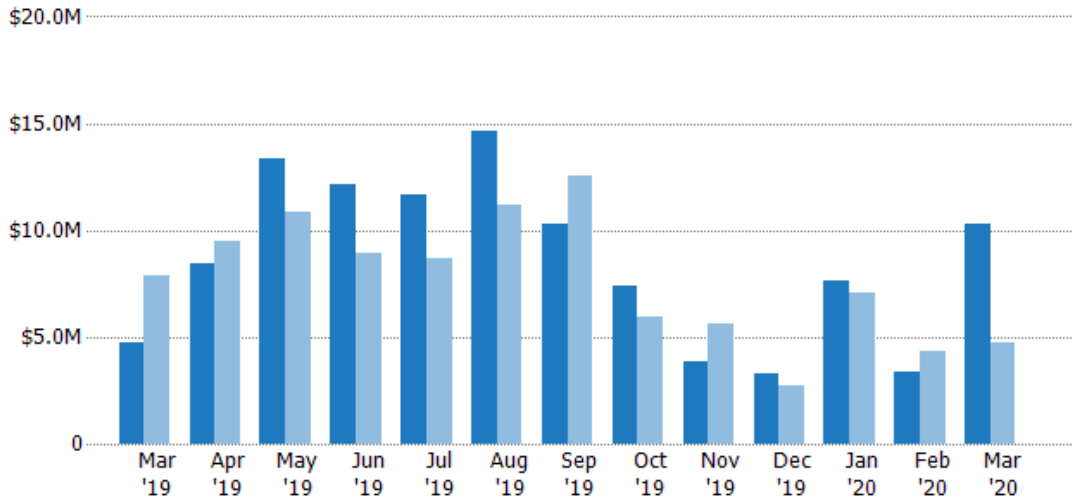
	Mar '19	Apr '19	May '19	Jun '19	Jul '19	Aug '19	Sep '19	Oct '19	Nov '19	Dec '19	Jan '20	Feb '20	Mar '20
Current Year	15	29	40	35	38	38	32	26	11	11	25	11	27
Prior Year	23	32	37	28	33	33	40	19	18	8	22	14	15
Percent Change from Prior Year	-35%	-9%	8%	25%	15%	15%	-20%	37%	-39%	38%	14%	-21%	80%

New Listing Volume

The sum of the listing price of residential listings that were added each month.

Filters Used

ZIP: Essex, VT 05451, Essex Junction, VT 05452, Essex Junction, VT 05453
 Property Type: Condo/Townhouse/Apt, Single Family Residence



Month/Year	Volume	% Chg.
Mar '20	\$10.3M	118%
Mar '19	\$4.72M	-40.1%
Mar '18	\$7.88M	-15.5%

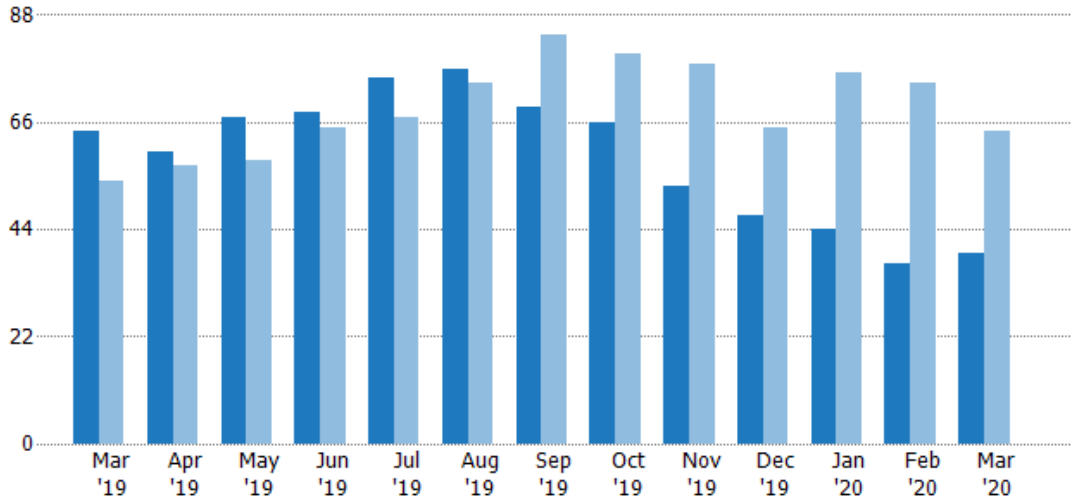
	Mar '19	Apr '19	May '19	Jun '19	Jul '19	Aug '19	Sep '19	Oct '19	Nov '19	Dec '19	Jan '20	Feb '20	Mar '20
Current Year	\$4.72M	\$8.42M	\$13.4M	\$12.2M	\$11.6M	\$14.6M	\$10.3M	\$7.36M	\$3.84M	\$3.3M	\$7.67M	\$3.41M	\$10.3M
Prior Year	\$7.88M	\$9.49M	\$10.8M	\$8.91M	\$8.69M	\$11.2M	\$12.5M	\$5.96M	\$5.6M	\$2.7M	\$7.1M	\$4.35M	\$4.72M
Percent Change from Prior Year	-40%	-11%	24%	37%	34%	31%	-18%	23%	-31%	22%	8%	-22%	118%

Active Listings

The number of active residential listings at the end of each month.

Filters Used

ZIP: Essex, VT 05451, Essex Junction, VT 05452, Essex Junction, VT 05453
 Property Type: Condo/Townhouse/Apt, Single Family Residence



Month/Year	Count	% Chg.
Mar '20	39	-39.1%
Mar '19	64	18.5%
Mar '18	54	1.9%

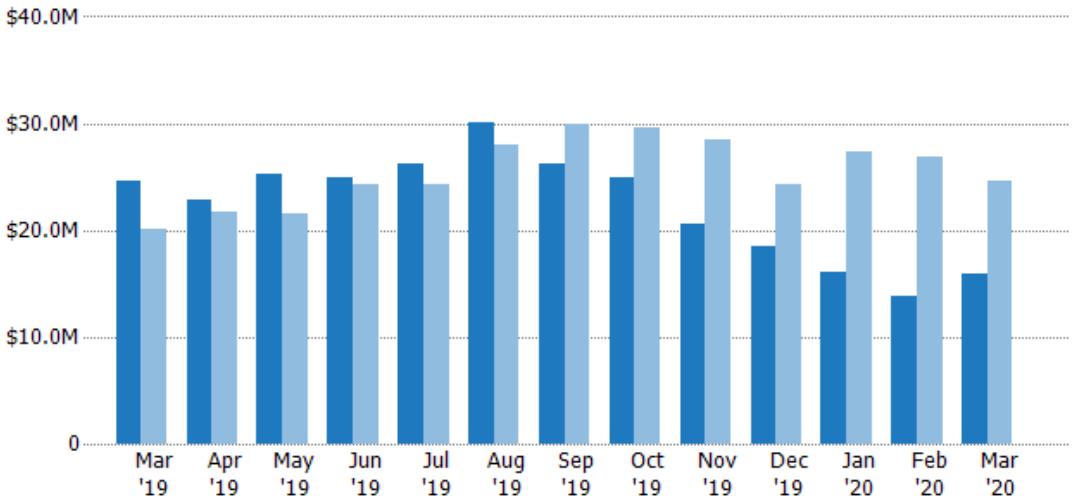
	Mar '19	Apr '19	May '19	Jun '19	Jul '19	Aug '19	Sep '19	Oct '19	Nov '19	Dec '19	Jan '20	Feb '20	Mar '20
Current Year	64	60	67	68	75	77	69	66	53	47	44	37	39
Prior Year	54	57	58	65	67	74	84	80	78	65	76	74	64
Percent Change from Prior Year	19%	5%	16%	5%	12%	4%	-18%	-18%	-32%	-28%	-42%	-50%	-39%

Active Listing Volume

The sum of the listing price of active residential listings at the end of each month.

Filters Used

ZIP: Essex, VT 05451, Essex Junction, VT 05452, Essex Junction, VT 05453
 Property Type: Condo/Townhouse/Apt, Single Family Residence



Month/Year	Volume	% Chg.
Mar '20	\$16M	-35.1%
Mar '19	\$24.6M	22.2%
Mar '18	\$20.2M	0.8%

	Mar '19	Apr '19	May '19	Jun '19	Jul '19	Aug '19	Sep '19	Oct '19	Nov '19	Dec '19	Jan '20	Feb '20	Mar '20
Current Year	\$24.6M	\$22.8M	\$25.2M	\$24.9M	\$26.2M	\$30.1M	\$26.2M	\$24.9M	\$20.5M	\$18.5M	\$16.2M	\$13.8M	\$16M
Prior Year	\$20.2M	\$21.7M	\$21.6M	\$24.3M	\$24.3M	\$28M	\$29.9M	\$29.6M	\$28.5M	\$24.2M	\$27.4M	\$26.9M	\$24.6M
Percent Change from Prior Year	22%	5%	16%	2%	8%	7%	-12%	-16%	-28%	-24%	-41%	-48%	-35%

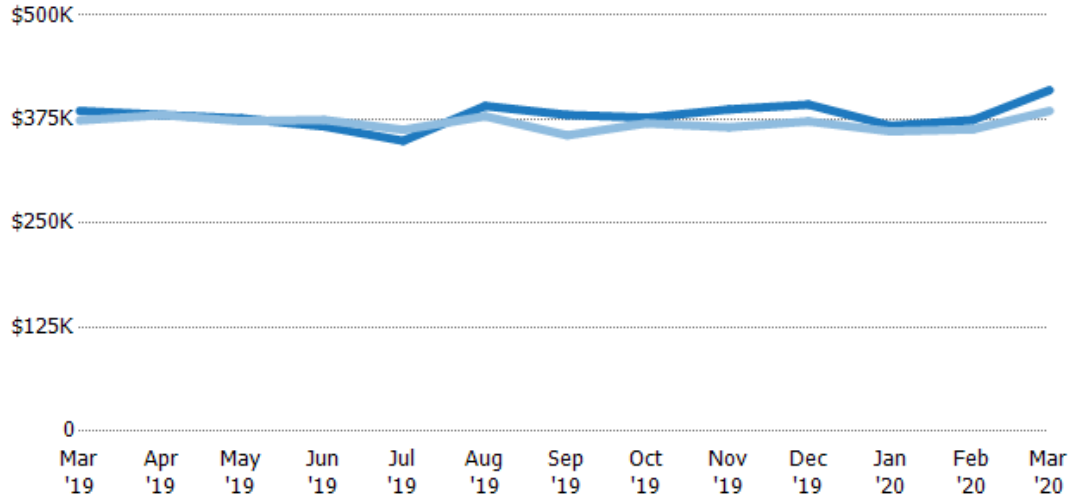
Average Listing Price

The average listing price of active residential listings at the end of each month.

Filters Used

ZIP: Essex, VT 05451, Essex Junction, VT 05452, Essex Junction, VT 05453
 Property Type: Condo/Townhouse/Apt, Single Family Residence

Month/Year	Price	% Chg.
Mar '20	\$410K	6.5%
Mar '19	\$385K	3.1%
Mar '18	\$374K	-1%



Current Year	\$385K	\$380K	\$376K	\$367K	\$349K	\$391K	\$380K	\$377K	\$387K	\$393K	\$367K	\$374K	\$410K
Prior Year	\$374K	\$380K	\$373K	\$374K	\$362K	\$379K	\$356K	\$370K	\$365K	\$372K	\$360K	\$363K	\$385K
Percent Change from Prior Year	3%	0	1%	-2%	-4%	3%	7%	2%	6%	5%	2%	3%	6%

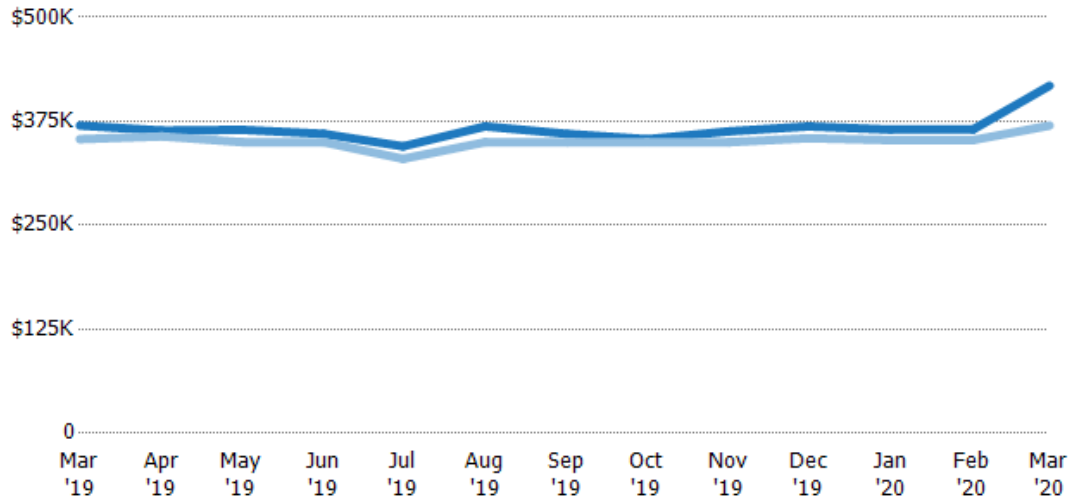
Median Listing Price

The median listing price of active residential listings at the end of each month.

Filters Used

ZIP: Essex, VT 05451, Essex Junction, VT 05452, Essex Junction, VT 05453
 Property Type: Condo/Townhouse/Apt, Single Family Residence

Month/Year	Price	% Chg.
Mar '20	\$418K	12.9%
Mar '19	\$370K	4.6%
Mar '18	\$353K	4.7%



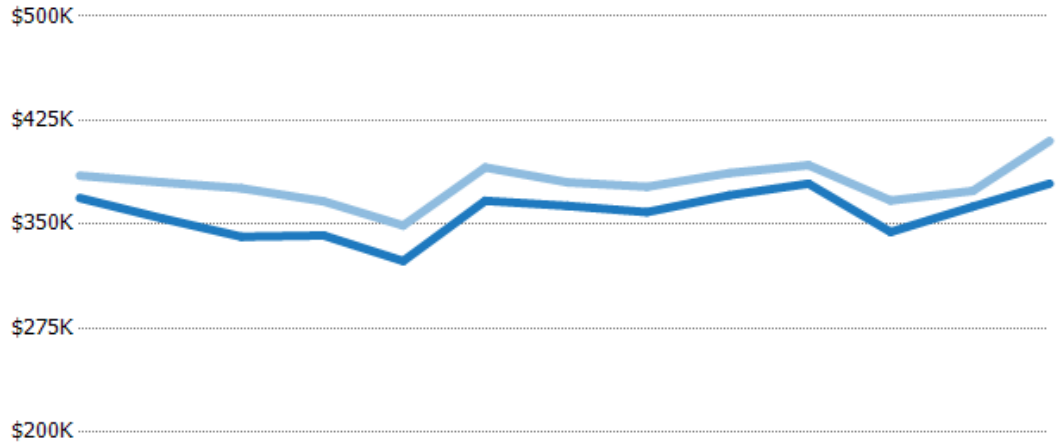
Current Year	\$370K	\$364K	\$365K	\$360K	\$345K	\$369K	\$360K	\$353K	\$363K	\$369K	\$365K	\$365K	\$418K
Prior Year	\$353K	\$357K	\$350K	\$350K	\$330K	\$350K	\$350K	\$350K	\$350K	\$355K	\$352K	\$352K	\$370K
Percent Change from Prior Year	5%	2%	4%	3%	5%	5%	3%	1%	4%	4%	4%	4%	13%

Average Listing Price vs Average Est Value

The average listing price as a percentage of the average AVM or RVM® valuation estimate for active listings each month.

Filters Used

ZIP: Essex, VT 05451, Essex Junction, VT 05452, Essex Junction, VT 05453
 Property Type: Condo/Townhouse/Apt, Single Family Residence



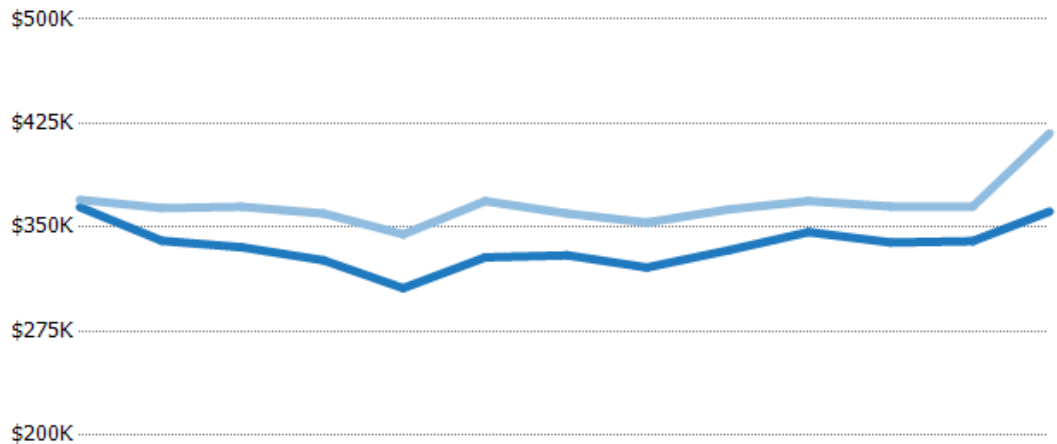
	Mar '19	Apr '19	May '19	Jun '19	Jul '19	Aug '19	Sep '19	Oct '19	Nov '19	Dec '19	Jan '20	Feb '20	Mar '20
Avg Est Value	\$369K	\$354K	\$341K	\$342K	\$323K	\$367K	\$363K	\$359K	\$371K	\$379K	\$344K	\$363K	\$379K
Avg Listing Price	\$385K	\$380K	\$376K	\$367K	\$349K	\$391K	\$380K	\$377K	\$387K	\$393K	\$367K	\$374K	\$410K
Avg Listing Price as a % of Avg Est Value	104%	107%	110%	107%	108%	107%	105%	105%	104%	104%	107%	103%	108%

Median Listing Price vs Median Est Value

The median listing price as a percentage of the median AVM or RVM® valuation estimate for active listings each month.

Filters Used

ZIP: Essex, VT 05451, Essex Junction, VT 05452, Essex Junction, VT 05453
 Property Type: Condo/Townhouse/Apt, Single Family Residence



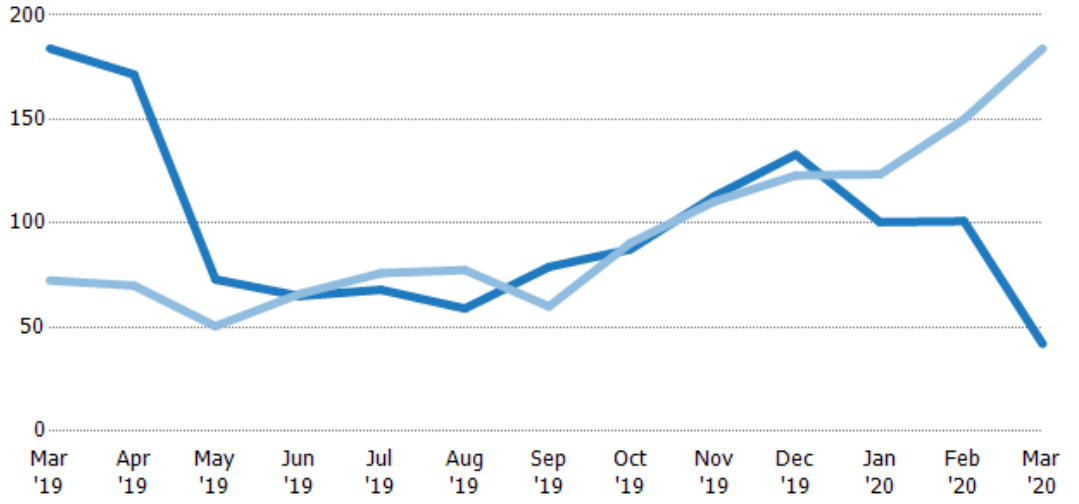
	Mar '19	Apr '19	May '19	Jun '19	Jul '19	Aug '19	Sep '19	Oct '19	Nov '19	Dec '19	Jan '20	Feb '20	Mar '20
Median Est Value	\$364K	\$340K	\$336K	\$326K	\$306K	\$328K	\$330K	\$321K	\$333K	\$347K	\$339K	\$340K	\$361K
Median Listing Price	\$370K	\$364K	\$365K	\$360K	\$345K	\$369K	\$360K	\$353K	\$363K	\$369K	\$365K	\$365K	\$418K
Med Listing Price as a % of Med Est Value	101%	107%	109%	110%	113%	112%	109%	110%	109%	106%	108%	107%	116%

Median Days in RPR

The median number of days between when residential properties are first displayed as active listings in RPR and when accepted offers have been noted in RPR.

Filters Used

ZIP: Essex, VT 05451, Essex Junction, VT 05452, Essex Junction, VT 05453
 Property Type: Condo/Townhouse/Apt, Single Family Residence



Month/Year	Days	% Chg.
Mar '20	42	-77.2%
Mar '19	184	153.8%
Mar '18	72.5	65.5%

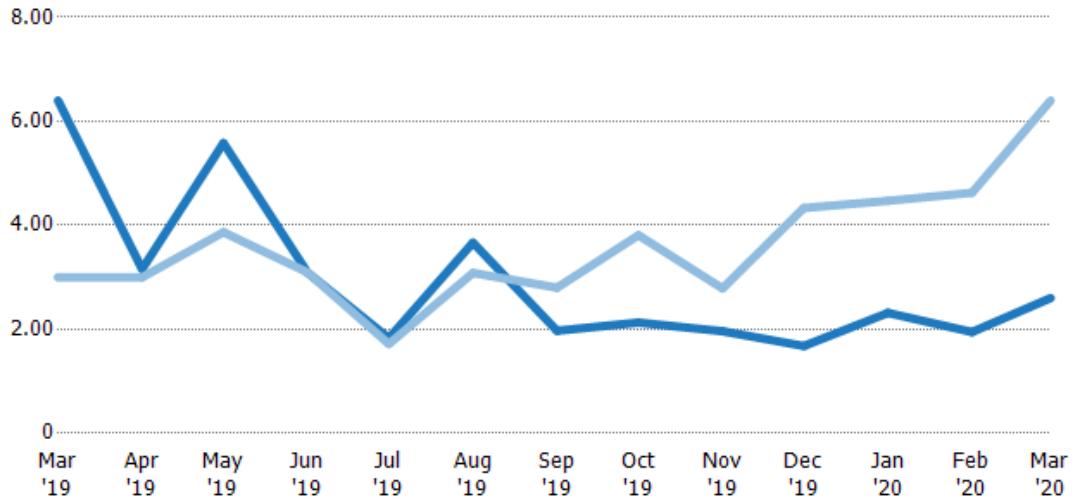
	Mar '19	Apr '19	May '19	Jun '19	Jul '19	Aug '19	Sep '19	Oct '19	Nov '19	Dec '19	Jan '20	Feb '20	Mar '20
Current Year	184	172	73	65	68	59	79	87.5	113	133	101	101	42
Prior Year	72.5	70	50.5	66	76	77.5	60	90.5	111	123	124	150	184
Percent Change from Prior Year	154%	145%	45%	-2%	-11%	-24%	32%	-3%	2%	8%	-19%	-33%	-77%

Months of Inventory

The number of months it would take to exhaust active listings at the current sales rate.

Filters Used

ZIP: Essex, VT 05451, Essex Junction, VT 05452, Essex Junction, VT 05453
 Property Type: Condo/Townhouse/Apt, Single Family Residence



Month/Year	Months	% Chg.
Mar '20	2.6	-59.4%
Mar '19	6.4	113.3%
Mar '18	3	161.9%

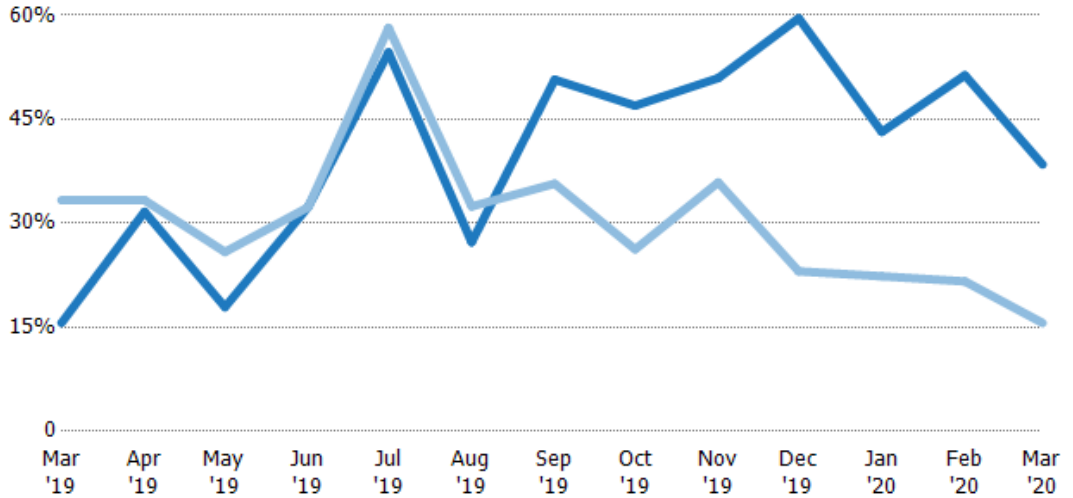
	Mar '19	Apr '19	May '19	Jun '19	Jul '19	Aug '19	Sep '19	Oct '19	Nov '19	Dec '19	Jan '20	Feb '20	Mar '20
Current Year	6.4	3.16	5.58	3.09	1.83	3.67	1.97	2.13	1.96	1.68	2.32	1.95	2.6
Prior Year	3	3	3.87	3.1	1.72	3.08	2.8	3.81	2.79	4.33	4.47	4.63	6.4
Percent Change from Prior Year	113%	5%	44%	0%	6%	19%	-30%	-44%	-30%	-61%	-48%	-58%	-59%

Absorption Rate

The percentage of inventory sold per month.

Filters Used

ZIP: Essex, VT 05451, Essex Junction, VT 05452, Essex Junction, VT 05453
 Property Type: Condo/Townhouse/Apt, Single Family Residence



Month/Year	Rate	Chg.
Mar '20	38%	-22.8%
Mar '19	16%	17.7%
Mar '18	33%	-61.8%

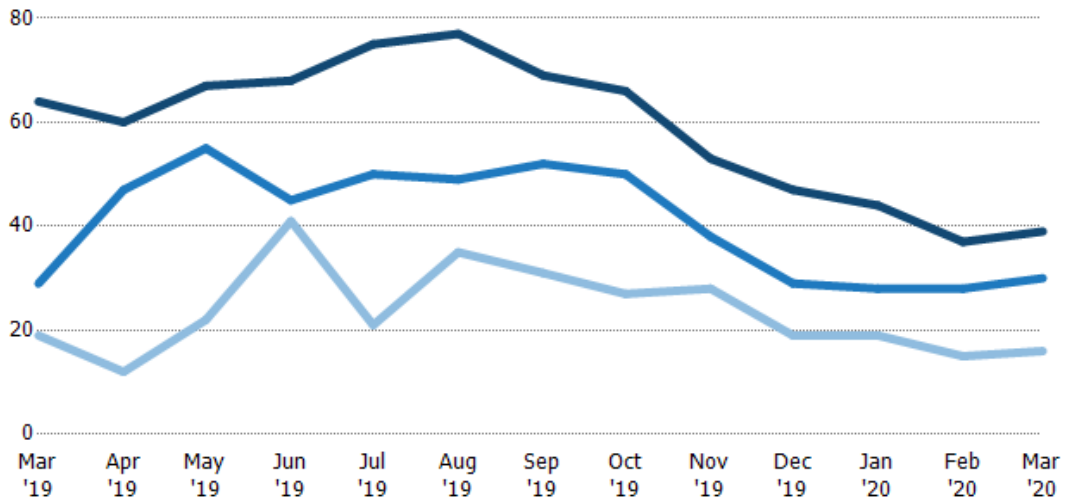
	Mar '19	Apr '19	May '19	Jun '19	Jul '19	Aug '19	Sep '19	Oct '19	Nov '19	Dec '19	Jan '20	Feb '20	Mar '20
Current Year	16%	32%	18%	32%	55%	27%	51%	47%	51%	60%	43%	51%	38%
Prior Year	33%	33%	26%	32%	58%	32%	36%	26%	36%	23%	22%	22%	16%
Change from Prior Year	18%	2%	8%	0%	4%	5%	-15%	-21%	-15%	-37%	-21%	-30%	-23%

Active/Pending/Sold Units

The number of residential properties that were Active, Pending and Sold each month.

Filters Used

ZIP: Essex, VT 05451, Essex Junction, VT 05452, Essex Junction, VT 05453
 Property Type: Condo/Townhouse/Apt, Single Family Residence



	Mar '19	Apr '19	May '19	Jun '19	Jul '19	Aug '19	Sep '19	Oct '19	Nov '19	Dec '19	Jan '20	Feb '20	Mar '20
Active	64	60	67	68	75	77	69	66	53	47	44	37	39
Pending	29	47	55	45	50	49	52	50	38	29	28	28	30
Sold	19	12	22	41	21	35	31	27	28	19	19	15	16

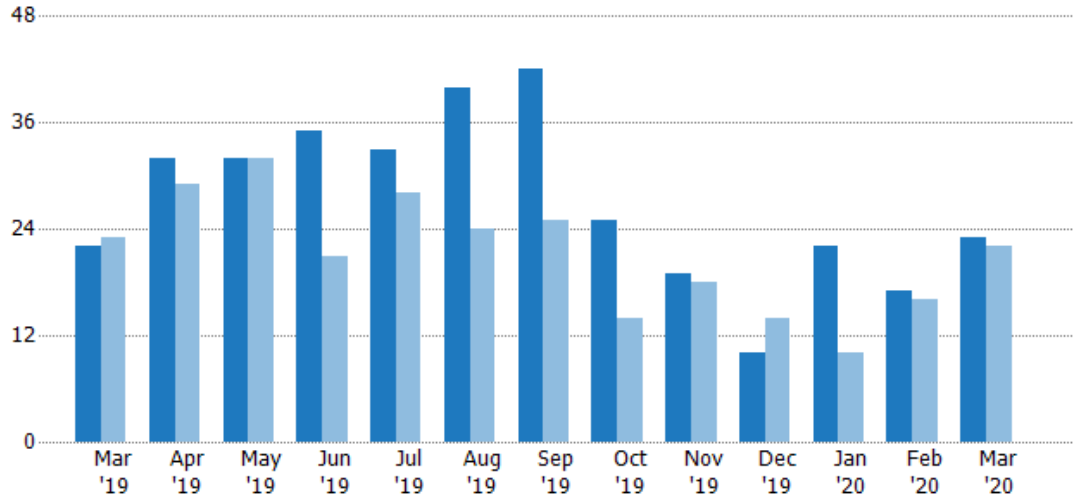
New Pending Sales

The number of residential properties with accepted offers that were added each month.

Filters Used

ZIP: Essex, VT 05451, Essex Junction, VT 05452, Essex Junction, VT 05453
 Property Type: Condo/Townhouse/Apt, Single Family Residence

Month/Year	Count	% Chg.
Mar '20	23	4.5%
Mar '19	22	-4.3%
Mar '18	23	56.5%



Current Year	22	32	32	35	33	40	42	25	19	10	22	17	23
Prior Year	23	29	32	21	28	24	25	14	18	14	10	16	22
Percent Change from Prior Year	-4%	10%	0%	67%	18%	67%	68%	79%	6%	-29%	120%	6%	5%

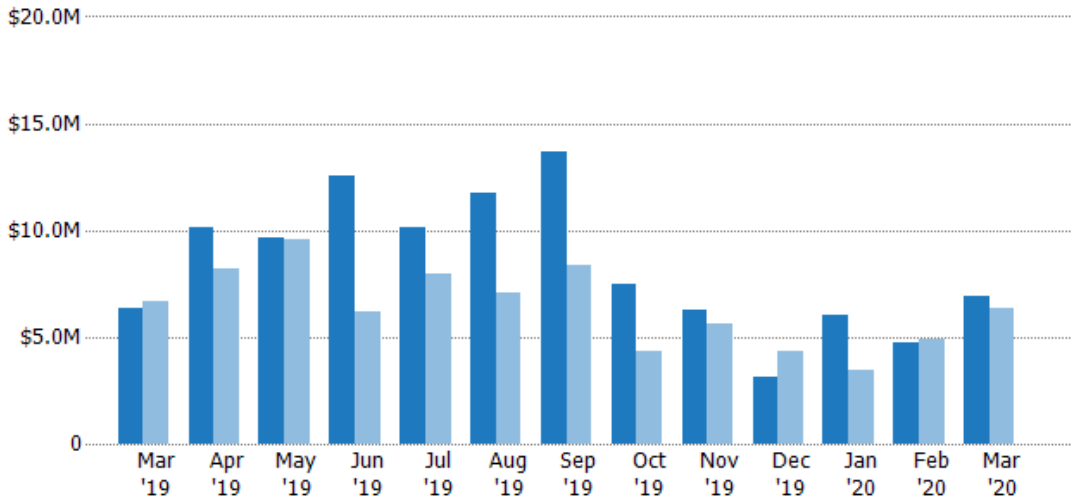
New Pending Sales Volume

The sum of the sales price of residential properties with accepted offers that were added each month.

Filters Used

ZIP: Essex, VT 05451, Essex Junction, VT 05452, Essex Junction, VT 05453
 Property Type: Condo/Townhouse/Apt, Single Family Residence

Month/Year	Volume	% Chg.
Mar '20	\$6.95M	9.9%
Mar '19	\$6.32M	-5.4%
Mar '18	\$6.68M	48.2%



Current Year	\$6.32M	\$10.1M	\$9.65M	\$12.5M	\$10.2M	\$11.7M	\$13.7M	\$7.48M	\$6.3M	\$3.09M	\$6.03M	\$4.76M	\$6.95M
Prior Year	\$6.68M	\$8.18M	\$9.55M	\$6.2M	\$7.98M	\$7.1M	\$8.35M	\$4.37M	\$5.59M	\$4.34M	\$3.49M	\$4.87M	\$6.32M
Percent Change from Prior Year	-5%	24%	1%	102%	27%	65%	64%	71%	13%	-29%	73%	-2%	10%

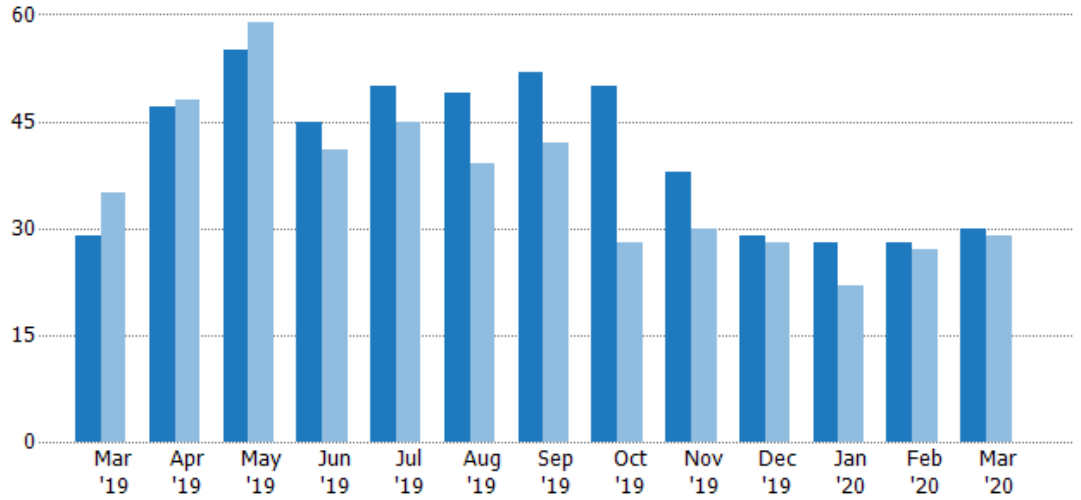
Pending Sales

The number of residential properties with accepted offers that were available at the end each month.

Filters Used

ZIP: Essex, VT 05451, Essex Junction, VT 05452, Essex Junction, VT 05453
 Property Type: Condo/Townhouse/Apt, Single Family Residence

Month/Year	Count	% Chg.
Mar '20	30	3.4%
Mar '19	29	-17.1%
Mar '18	35	34.3%



Current Year	29	47	55	45	50	49	52	50	38	29	28	28	30
Prior Year	35	48	59	41	45	39	42	28	30	28	22	27	29
Percent Change from Prior Year	-17%	-2%	-7%	10%	11%	26%	24%	79%	27%	4%	27%	4%	3%

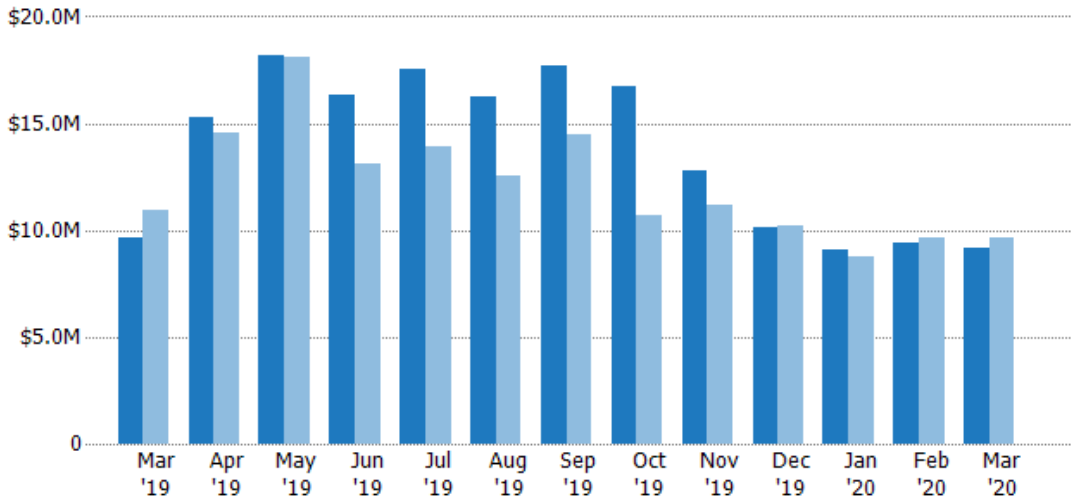
Pending Sales Volume

The sum of the sales price of residential properties with accepted offers that were available at the end of each month.

Filters Used

ZIP: Essex, VT 05451, Essex Junction, VT 05452, Essex Junction, VT 05453
 Property Type: Condo/Townhouse/Apt, Single Family Residence

Month/Year	Volume	% Chg.
Mar '20	\$9.18M	-4.5%
Mar '19	\$9.61M	-11.9%
Mar '18	\$10.9M	29.1%



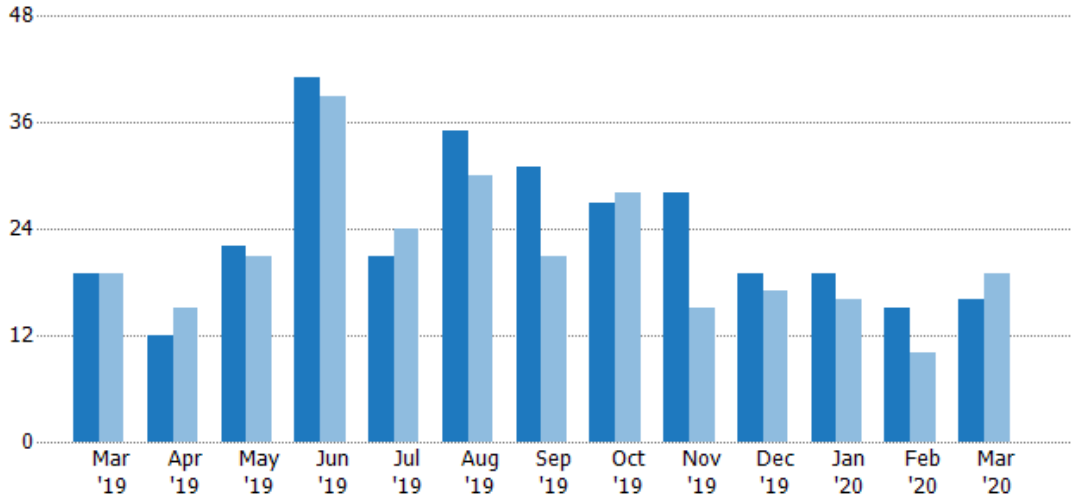
Current Year	\$9.61M	\$15.3M	\$18.2M	\$16.3M	\$17.5M	\$16.3M	\$17.7M	\$16.8M	\$12.8M	\$10.1M	\$9.11M	\$9.39M	\$9.18M
Prior Year	\$10.9M	\$14.5M	\$18.1M	\$13.1M	\$13.9M	\$12.5M	\$14.5M	\$10.7M	\$11.1M	\$10.2M	\$8.79M	\$9.68M	\$9.61M
Percent Change from Prior Year	-12%	5%	1%	24%	26%	30%	22%	57%	15%	-1%	4%	-3%	-4%

Closed Sales

The total number of residential properties sold each month.

Filters Used

ZIP: Essex, VT 05451, Essex Junction, VT 05452, Essex Junction, VT 05453
 Property Type: Condo/Townhouse/Apt, Single Family Residence



Month/Year	Count	% Chg.
Mar '20	16	-15.8%
Mar '19	19	0%
Mar '18	19	0%

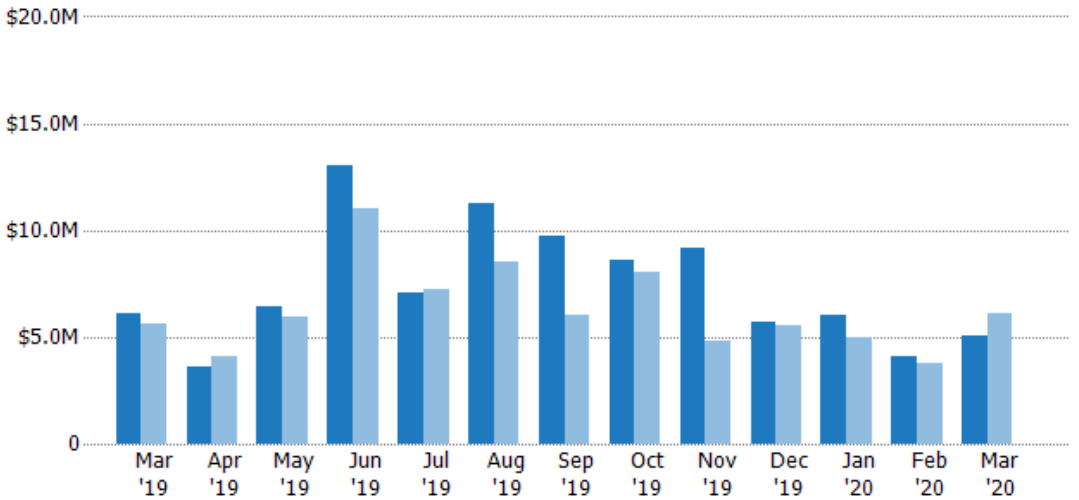
Current Year	19	12	22	41	21	35	31	27	28	19	19	15	16
Prior Year	19	15	21	39	24	30	21	28	15	17	16	10	19
Percent Change from Prior Year	0%	-20%	5%	5%	-13%	17%	48%	-4%	87%	12%	19%	50%	-16%

Closed Sales Volume

The sum of the sales price of residential properties sold each month.

Filters Used

ZIP: Essex, VT 05451, Essex Junction, VT 05452, Essex Junction, VT 05453
 Property Type: Condo/Townhouse/Apt, Single Family Residence



Month/Year	Volume	% Chg.
Mar '20	\$5.08M	-17.1%
Mar '19	\$6.14M	9.7%
Mar '18	\$5.59M	-19.8%

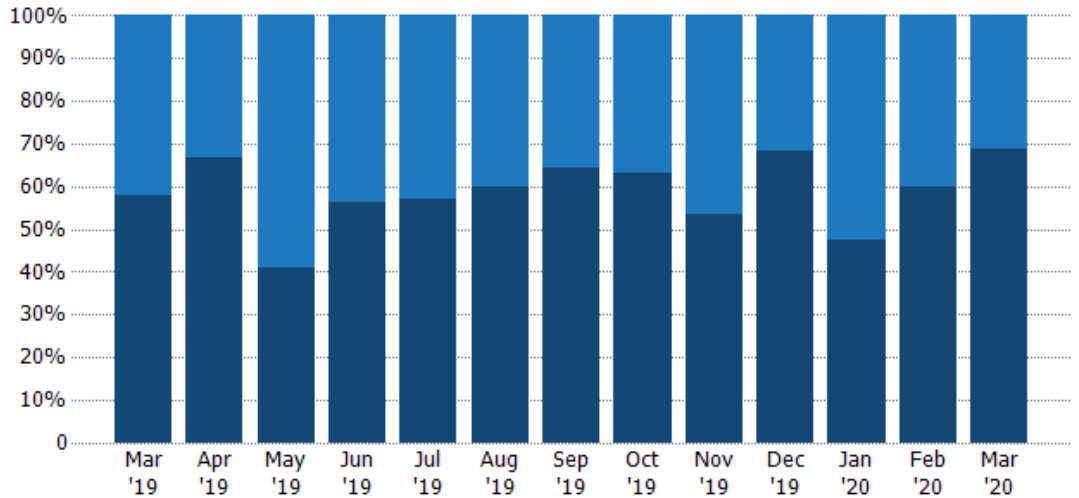
Current Year	\$6.14M	\$3.61M	\$6.45M	\$13M	\$7.04M	\$11.3M	\$9.75M	\$8.63M	\$9.13M	\$5.68M	\$5.99M	\$4.1M	\$5.08M
Prior Year	\$5.59M	\$4.11M	\$5.92M	\$11M	\$7.24M	\$8.5M	\$6.02M	\$8.06M	\$4.81M	\$5.52M	\$4.94M	\$3.79M	\$6.14M
Percent Change from Prior Year	10%	-12%	9%	18%	-3%	32%	62%	7%	90%	3%	21%	8%	-17%

Closed Sales by Property Type

The percentage of residential properties sold each month by property type.

Filters Used

ZIP: Essex, VT 05451, Essex Junction, VT 05452, Essex Junction, VT 05453
 Property Type: Condo/Townhouse/Apt, Single Family Residence



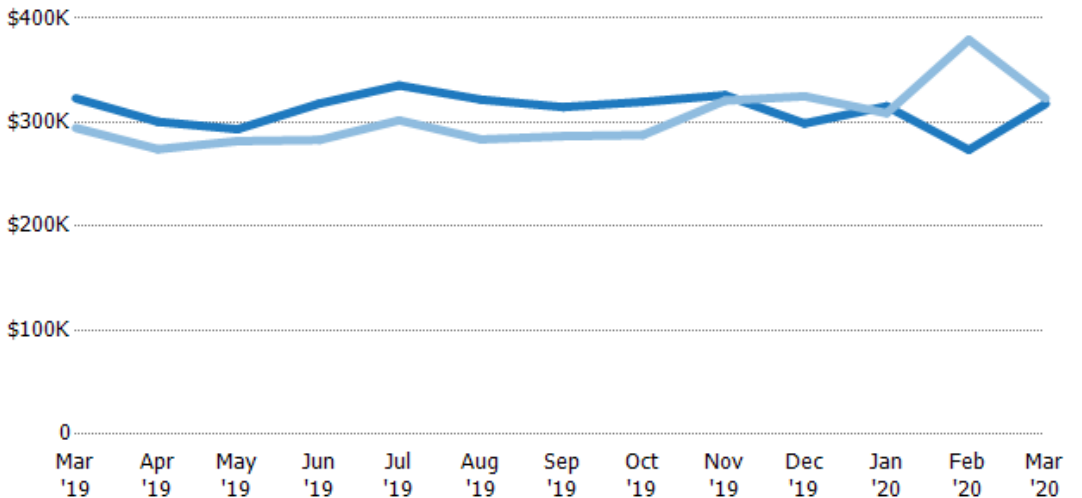
Property Type	Mar '19	Apr '19	May '19	Jun '19	Jul '19	Aug '19	Sep '19	Oct '19	Nov '19	Dec '19	Jan '20	Feb '20	Mar '20
Condo/Townhouse	42%	33%	59%	44%	43%	40%	35%	37%	46%	32%	53%	40%	31%
Single Family Residence	58%	67%	41%	56%	57%	60%	65%	63%	54%	68%	47%	60%	69%

Average Sales Price

The average sales price of the residential properties sold each month.

Filters Used

ZIP: Essex, VT 05451, Essex Junction, VT 05452, Essex Junction, VT 05453
 Property Type: Condo/Townhouse/Apt, Single Family Residence



Month/Year	Price	% Chg.
Mar '20	\$318K	-1.6%
Mar '19	\$323K	9.7%
Mar '18	\$294K	-19.8%

Property Type	Mar '19	Apr '19	May '19	Jun '19	Jul '19	Aug '19	Sep '19	Oct '19	Nov '19	Dec '19	Jan '20	Feb '20	Mar '20
Current Year	\$323K	\$300K	\$293K	\$318K	\$335K	\$322K	\$315K	\$320K	\$326K	\$299K	\$315K	\$274K	\$318K
Prior Year	\$294K	\$274K	\$282K	\$283K	\$302K	\$283K	\$287K	\$288K	\$321K	\$325K	\$309K	\$379K	\$323K
Percent Change from Prior Year	10%	10%	4%	12%	11%	14%	10%	11%	2%	-8%	2%	-28%	-2%

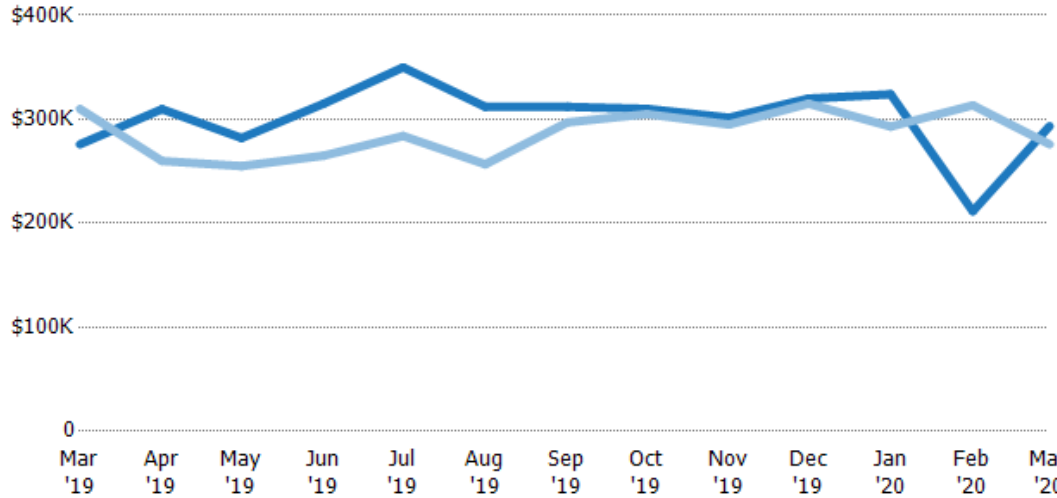
Median Sales Price

The median sales price of the residential properties sold each month.

Filters Used

ZIP: Essex, VT 05451, Essex Junction, VT 05452, Essex Junction, VT 05453
 Property Type: Condo/Townhouse/Apt, Single Family Residence

Month/Year	Price	% Chg.
Mar '20	\$294K	6.4%
Mar '19	\$276K	-11%
Mar '18	\$310K	-27.1%



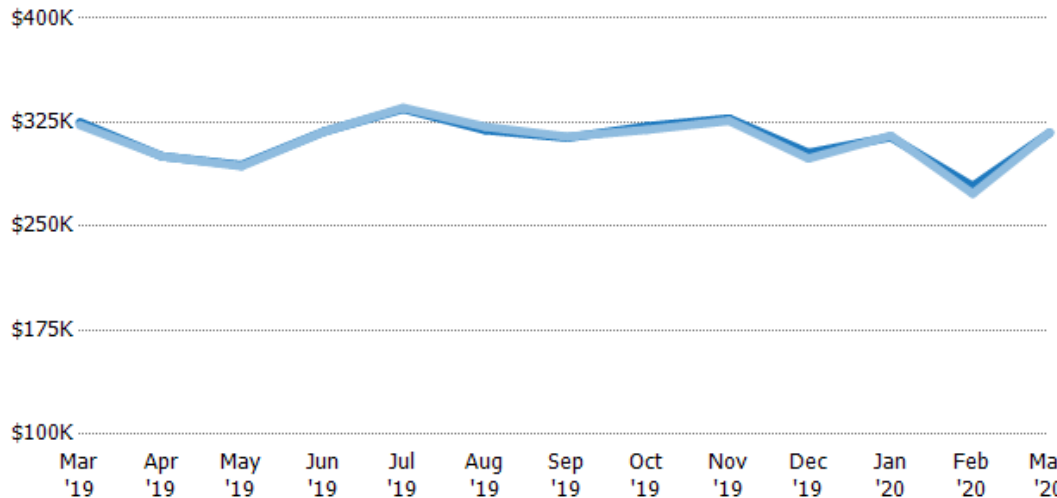
	Mar '19	Apr '19	May '19	Jun '19	Jul '19	Aug '19	Sep '19	Oct '19	Nov '19	Dec '19	Jan '20	Feb '20	Mar '20
Current Year	\$276K	\$310K	\$282K	\$315K	\$350K	\$312K	\$312K	\$310K	\$302K	\$320K	\$324K	\$212K	\$294K
Prior Year	\$310K	\$260K	\$255K	\$265K	\$284K	\$257K	\$297K	\$305K	\$295K	\$315K	\$293K	\$313K	\$276K
Percent Change from Prior Year	-11%	19%	11%	19%	23%	22%	5%	2%	2%	2%	11%	-33%	6%

Average Sales Price vs Average Listing Price

The average sales price as a percentage of the average listing price for properties sold each month.

Filters Used

ZIP: Essex, VT 05451, Essex Junction, VT 05452, Essex Junction, VT 05453
 Property Type: Condo/Townhouse/Apt, Single Family Residence



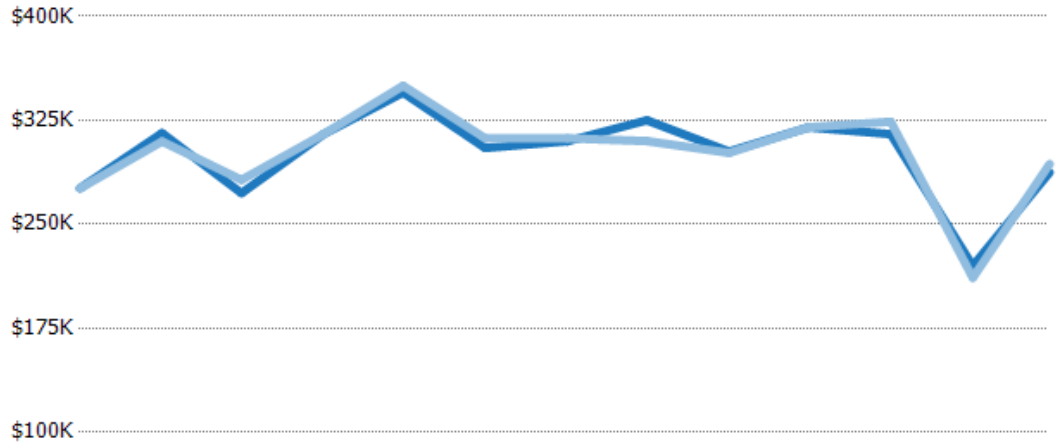
	Mar '19	Apr '19	May '19	Jun '19	Jul '19	Aug '19	Sep '19	Oct '19	Nov '19	Dec '19	Jan '20	Feb '20	Mar '20
Avg List Price	\$325K	\$300K	\$294K	\$318K	\$335K	\$319K	\$314K	\$322K	\$328K	\$303K	\$314K	\$279K	\$317K
Avg Sales Price	\$323K	\$300K	\$293K	\$318K	\$335K	\$322K	\$315K	\$320K	\$326K	\$299K	\$315K	\$274K	\$318K
Avg Sales Price as a % of Avg List Price	99%	100%	100%	100%	100%	101%	100%	99%	99%	99%	100%	98%	100%

Median Sales Price vs Median Listing Price

The median sales price as a percentage of the median listing price for properties sold each month.

Filters Used

ZIP: Essex, VT 05451, Essex Junction, VT 05452, Essex Junction, VT 05453
 Property Type: Condo/Townhouse/Apt, Single Family Residence



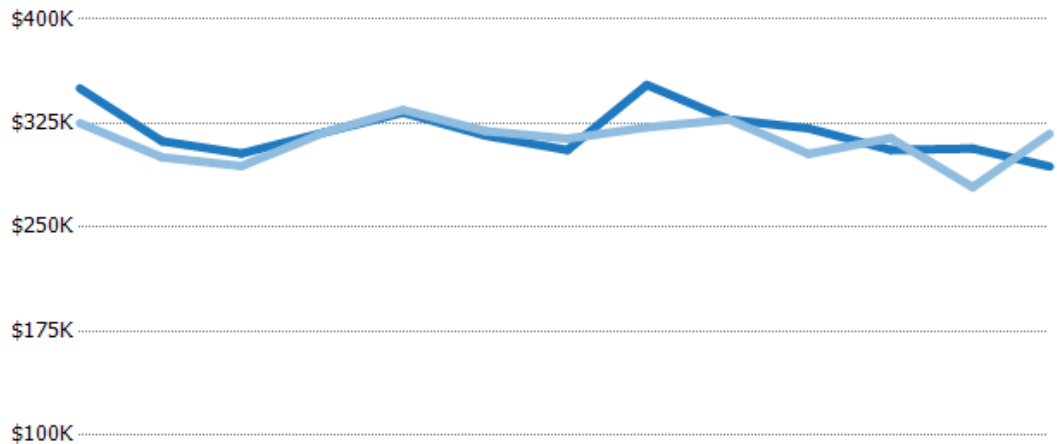
	Mar '19	Apr '19	May '19	Jun '19	Jul '19	Aug '19	Sep '19	Oct '19	Nov '19	Dec '19	Jan '20	Feb '20	Mar '20
Median List Price	\$276K	\$316K	\$272K	\$315K	\$345K	\$305K	\$310K	\$325K	\$302K	\$320K	\$315K	\$220K	\$287K
Median Sales Price	\$276K	\$310K	\$282K	\$315K	\$350K	\$312K	\$312K	\$310K	\$302K	\$320K	\$324K	\$212K	\$294K
Med Sales Price as a % of Med List Price	100%	98%	104%	100%	101%	102%	101%	95%	100%	100%	103%	96%	102%

Average Sales Price vs Average Est Value

The average sales price as a percentage of the average AVM or RVM® valuation estimate for properties sold each month.

Filters Used

ZIP: Essex, VT 05451, Essex Junction, VT 05452, Essex Junction, VT 05453
 Property Type: Condo/Townhouse/Apt, Single Family Residence



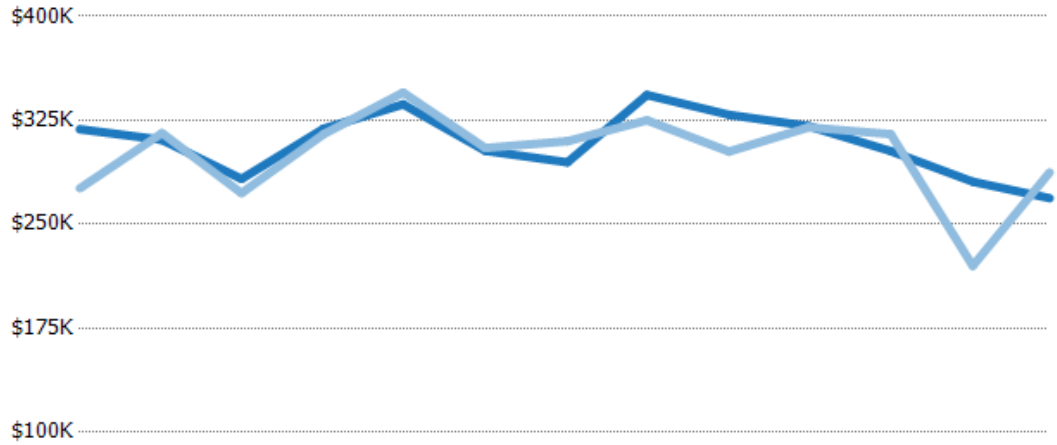
	Mar '19	Apr '19	May '19	Jun '19	Jul '19	Aug '19	Sep '19	Oct '19	Nov '19	Dec '19	Jan '20	Feb '20	Mar '20
Avg Est Value	\$350K	\$312K	\$303K	\$318K	\$333K	\$316K	\$306K	\$353K	\$328K	\$321K	\$306K	\$307K	\$294K
Avg Sales Price	\$325K	\$300K	\$294K	\$318K	\$335K	\$319K	\$314K	\$322K	\$328K	\$303K	\$314K	\$279K	\$317K
Avg Sales Price as a % of Avg Est Value	93%	96%	97%	100%	101%	101%	103%	91%	100%	94%	103%	91%	108%

Median Sales Price vs Median Est Value

The median sales price as a percent of the median AVM or RVM® valuation estimate for properties sold each month.

Filters Used

ZIP: Essex, VT 05451, Essex Junction, VT 05452, Essex Junction, VT 05453
 Property Type: Condo/Townhouse/Apt, Single Family Residence



	Mar '19	Apr '19	May '19	Jun '19	Jul '19	Aug '19	Sep '19	Oct '19	Nov '19	Dec '19	Jan '20	Feb '20	Mar '20
Median Est Value	\$319K	\$311K	\$283K	\$319K	\$336K	\$303K	\$295K	\$343K	\$329K	\$321K	\$303K	\$281K	\$269K
Median Sales Price	\$276K	\$316K	\$272K	\$315K	\$345K	\$305K	\$310K	\$325K	\$302K	\$320K	\$315K	\$220K	\$287K
Med Sales Price as a % of Med Est Value	87%	102%	96%	99%	103%	101%	105%	95%	92%	100%	104%	78%	107%