

## Summary of Key Listing and Sales Metrics

A summary of the key metrics selected to be included in the report. MLS sources where licensed.

Key Metrics	Mar 2020	Mar 2019	+ / -	YTD 2020	YTD 2019	+ / -
<b>Listing Activity Charts Metrics</b>						
New Listing Count	34	41	-17.1%	115	124	-7.3%
New Listing Volume	\$10,212,800	\$11,286,300	-9.5%	\$43,826,400	\$42,277,928	+3.7%
Active Listing Count	272	392	-30.6%	N/A	N/A	
Active Listing Volume	\$132,885,200	\$168,823,815	-21.3%	N/A	N/A	
Average Listing Price	\$488,549	\$430,673	+13.4%	\$473,674	\$424,695	+11.5%
Median Listing Price	\$325,000	\$289,500	+12.3%	\$321,413	\$293,215	+9.6%
Median Days in RPR	191	237	-19.4%	193.25	223.7	-13.6%
Months of Inventory	9.1	23.1	-60.7%	12.9	16.8	-23.4%
Absorption Rate	11.03%	4.34%	+6.7%	7.78%	5.96%	+1.8%
<b>Sales Activity Charts Metrics</b>						
New Pending Sales Count	34	53	-35.8%	126	122	+3.3%
New Pending Sales Volume	\$9,879,100	\$14,599,699	-32.3%	\$36,769,451	\$32,635,099	+12.7%
Pending Sales Count	66	72	-8.3%	N/A	N/A	
Pending Sales Volume	\$19,027,100	\$20,345,899	-6.5%	N/A	N/A	
Closed Sales Count	26	34	-23.5%	80	69	+15.9%
Closed Sales Volume	\$7,481,542	\$8,228,225	-9.1%	\$25,742,593	\$16,044,400	+60.4%
Average Sales Price	\$287,752	\$242,007	+18.9%	\$321,782	\$232,528	+38.4%
Median Sales Price	\$276,250	\$195,750	+41.1%	\$254,500	\$188,058	+35.3%

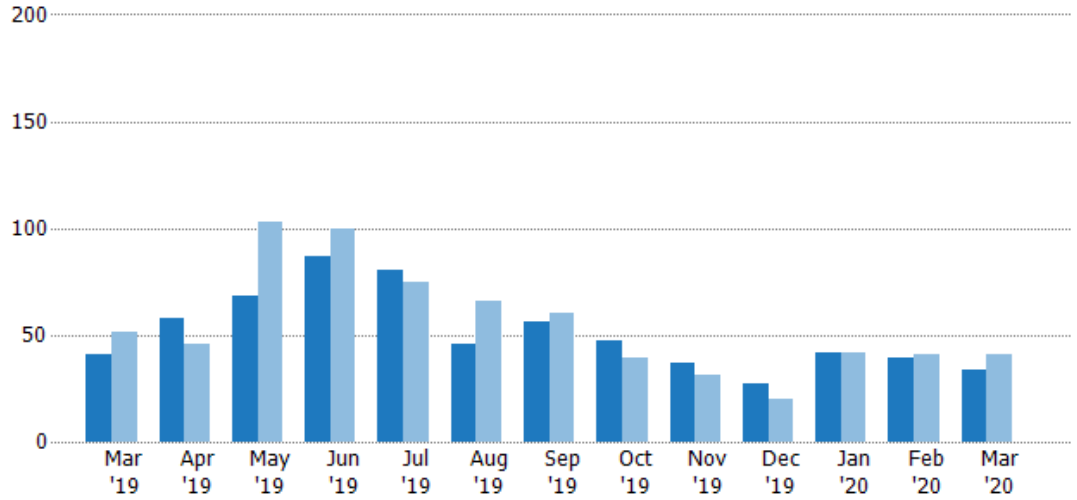
## New Listings

The number of new residential listings that were added each month.

### Filters Used

State: VT  
 County: Bennington County, Vermont  
 Property Type: Condo/Townhouse/Apt, Single Family Residence

Month/Year	Count	% Chg.
Mar '20	34	-17.1%
Mar '19	41	-19.6%
Mar '18	51	-25.5%



Current Year	41	58	68	87	80	46	56	47	37	27	42	39	34
Prior Year	51	46	103	100	75	66	60	39	31	20	42	41	41
Percent Change from Prior Year	-20%	26%	-34%	-13%	7%	-30%	-7%	21%	19%	35%	0%	-5%	-17%

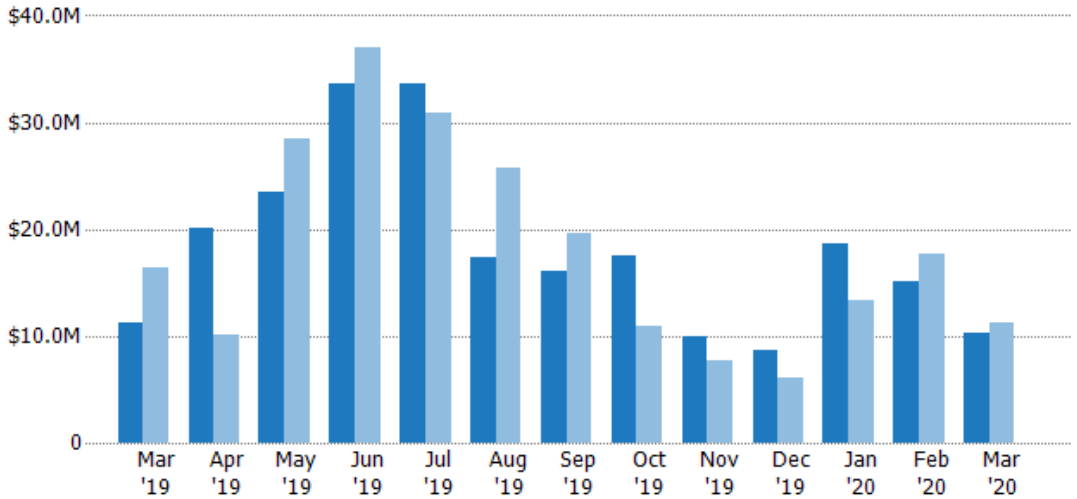
## New Listing Volume

The sum of the listing price of residential listings that were added each month.

### Filters Used

State: VT  
 County: Bennington County, Vermont  
 Property Type: Condo/Townhouse/Apt, Single Family Residence

Month/Year	Volume	% Chg.
Mar '20	\$10.2M	-9.5%
Mar '19	\$11.3M	-31%
Mar '18	\$16.3M	-38.2%



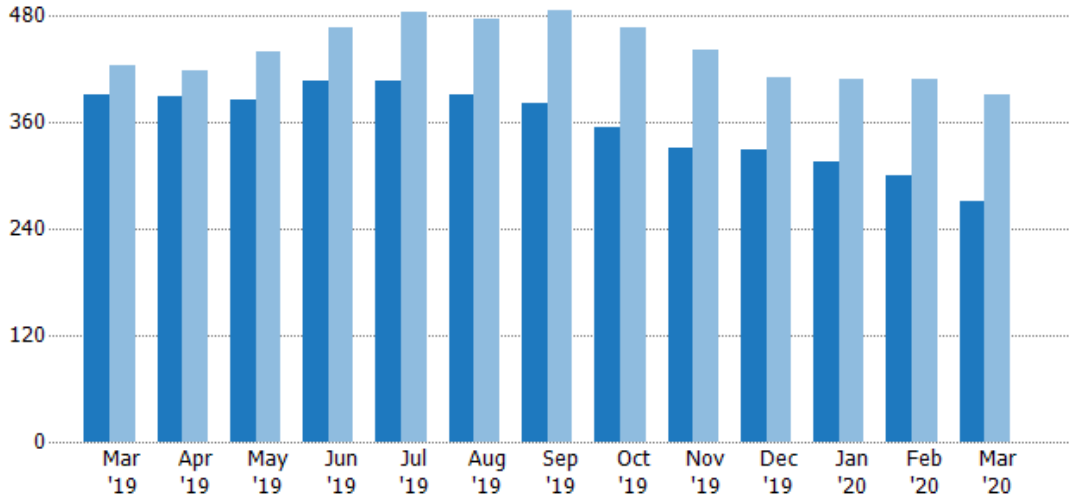
Current Year	\$11.3M	\$20.1M	\$23.6M	\$33.6M	\$33.6M	\$17.4M	\$16.1M	\$17.5M	\$9.97M	\$8.74M	\$18.6M	\$15M	\$10.2M
Prior Year	\$16.3M	\$10.1M	\$28.4M	\$37M	\$30.9M	\$25.8M	\$19.6M	\$11M	\$7.66M	\$6.02M	\$13.3M	\$17.7M	\$11.3M
Percent Change from Prior Year	-31%	99%	-17%	-9%	9%	-33%	-18%	59%	30%	45%	40%	-15%	-10%

## Active Listings

The number of active residential listings at the end of each month.

### Filters Used

State: VT  
 County: Bennington County, Vermont  
 Property Type: Condo/Townhouse/Apt, Single Family Residence



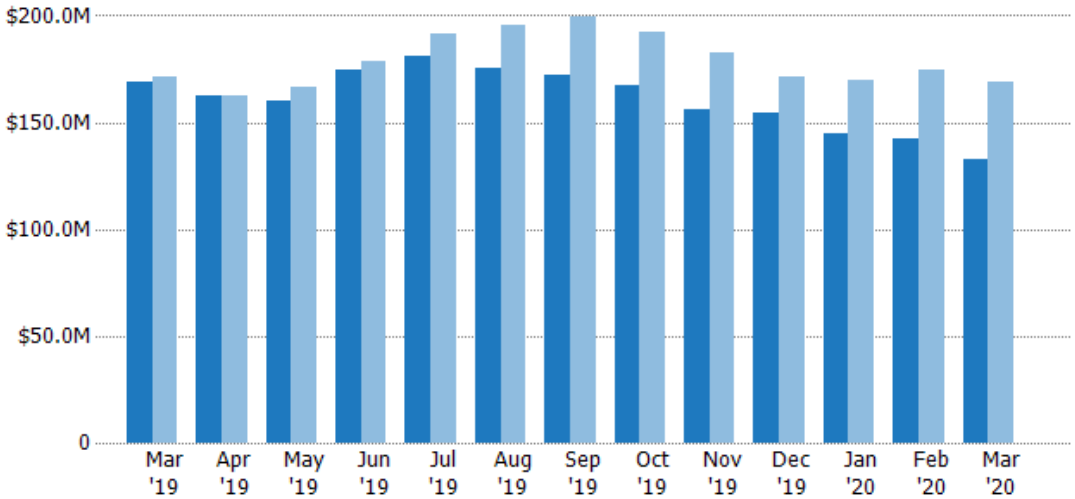
Month/Year	Current Year	Prior Year	Percent Change from Prior Year
Mar '20	272	392	-30.6%
Apr '20	300	419	-28.9%
May '20	315	439	-28.5%
Jun '20	330	467	-29.6%
Jul '20	345	484	-28.9%
Aug '20	355	477	-25.9%
Sep '20	365	486	-24.9%
Oct '20	375	468	-20.9%
Nov '20	385	442	-12.9%
Dec '20	395	410	-4.9%
Jan '21	405	408	-1.7%
Feb '21	415	408	1.7%
Mar '21	425	392	7.9%

## Active Listing Volume

The sum of the listing price of active residential listings at the end of each month.

### Filters Used

State: VT  
 County: Bennington County, Vermont  
 Property Type: Condo/Townhouse/Apt, Single Family Residence



Month/Year	Current Year	Prior Year	Percent Change from Prior Year
Mar '20	\$133M	\$169M	-21.3%
Apr '20	\$143M	\$163M	-12.9%
May '20	\$145M	\$167M	-13.9%
Jun '20	\$145M	\$179M	-19.5%
Jul '20	\$143M	\$191M	-25.1%
Aug '20	\$145M	\$196M	-26.1%
Sep '20	\$145M	\$200M	-27.6%
Oct '20	\$145M	\$192M	-24.5%
Nov '20	\$145M	\$183M	-20.8%
Dec '20	\$145M	\$171M	-14.6%
Jan '21	\$145M	\$170M	-14.7%
Feb '21	\$145M	\$175M	-17.7%
Mar '21	\$133M	\$169M	-21.3%

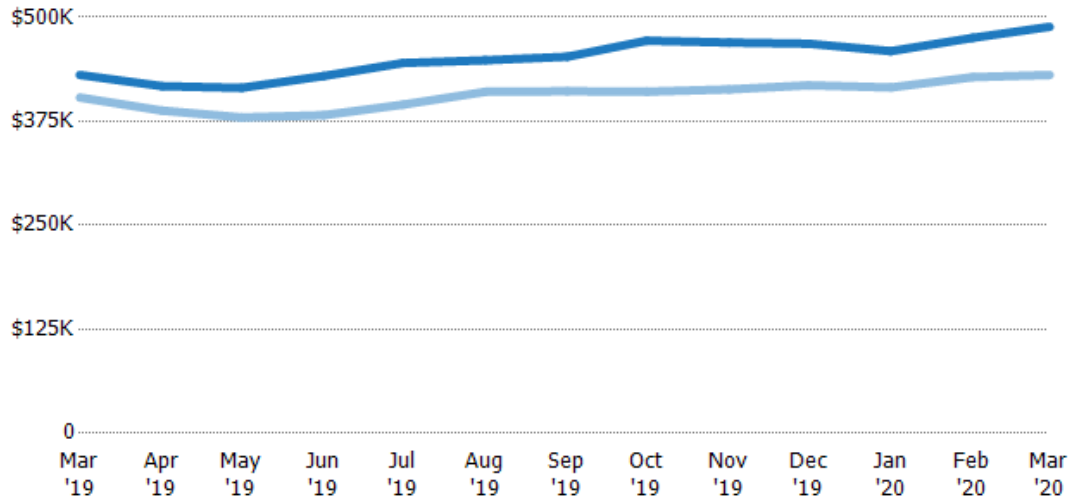
## Average Listing Price

The average listing price of active residential listings at the end of each month.

### Filters Used

State: VT  
 County: Bennington County, Vermont  
 Property Type: Condo/Townhouse/Apt, Single Family Residence

Month/Year	Price	% Chg.
Mar '20	\$489K	13.4%
Mar '19	\$431K	6.7%
Mar '18	\$404K	-0.6%



Current Year	\$431K	\$417K	\$415K	\$429K	\$445K	\$448K	\$453K	\$472K	\$470K	\$468K	\$459K	\$475K	\$489K
Prior Year	\$404K	\$388K	\$380K	\$382K	\$395K	\$410K	\$411K	\$411K	\$413K	\$418K	\$416K	\$428K	\$431K
Percent Change from Prior Year	7%	8%	9%	12%	13%	9%	10%	15%	14%	12%	11%	11%	13%

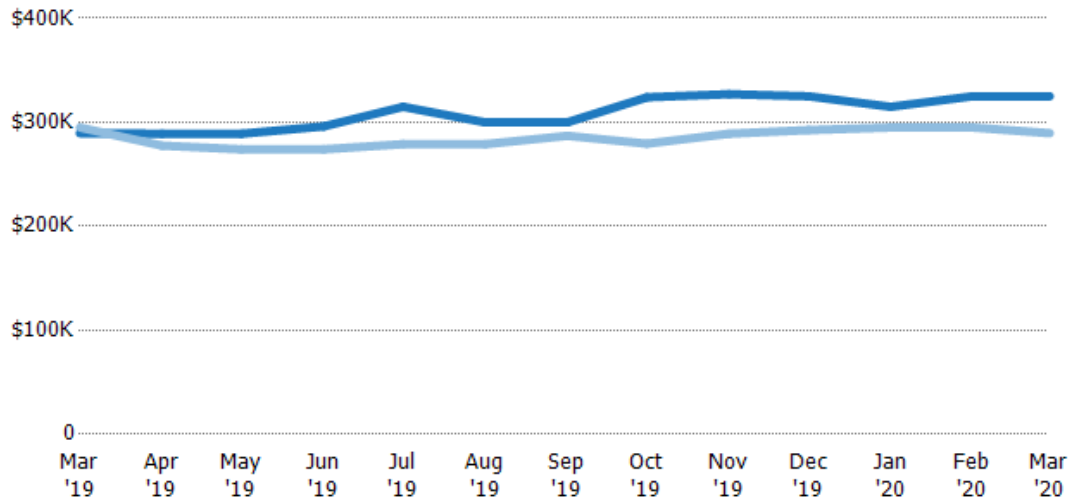
## Median Listing Price

The median listing price of active residential listings at the end of each month.

### Filters Used

State: VT  
 County: Bennington County, Vermont  
 Property Type: Condo/Townhouse/Apt, Single Family Residence

Month/Year	Price	% Chg.
Mar '20	\$325K	12.3%
Mar '19	\$290K	-1.9%
Mar '18	\$295K	-5.1%



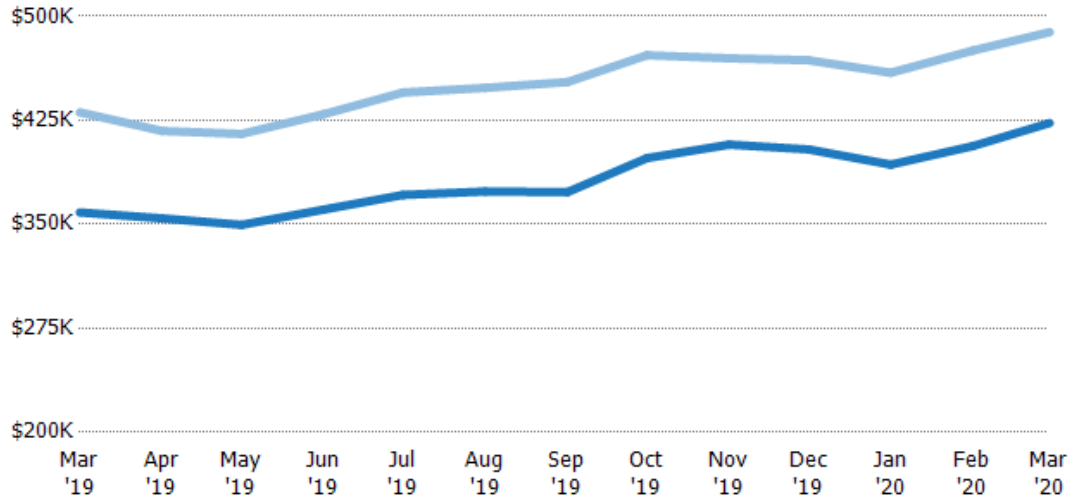
Current Year	\$290K	\$289K	\$289K	\$296K	\$315K	\$300K	\$300K	\$324K	\$327K	\$325K	\$315K	\$325K	\$325K
Prior Year	\$295K	\$278K	\$274K	\$274K	\$279K	\$279K	\$287K	\$279K	\$289K	\$293K	\$295K	\$295K	\$290K
Percent Change from Prior Year	-2%	4%	5%	8%	13%	7%	5%	16%	13%	11%	7%	10%	12%

## Average Listing Price vs Average Est Value

The average listing price as a percentage of the average AVM or RVM® valuation estimate for active listings each month.

### Filters Used

State: VT  
 County: Bennington County,  
 Vermont  
 Property Type:  
 Condo/Townhouse/Apt, Single  
 Family Residence

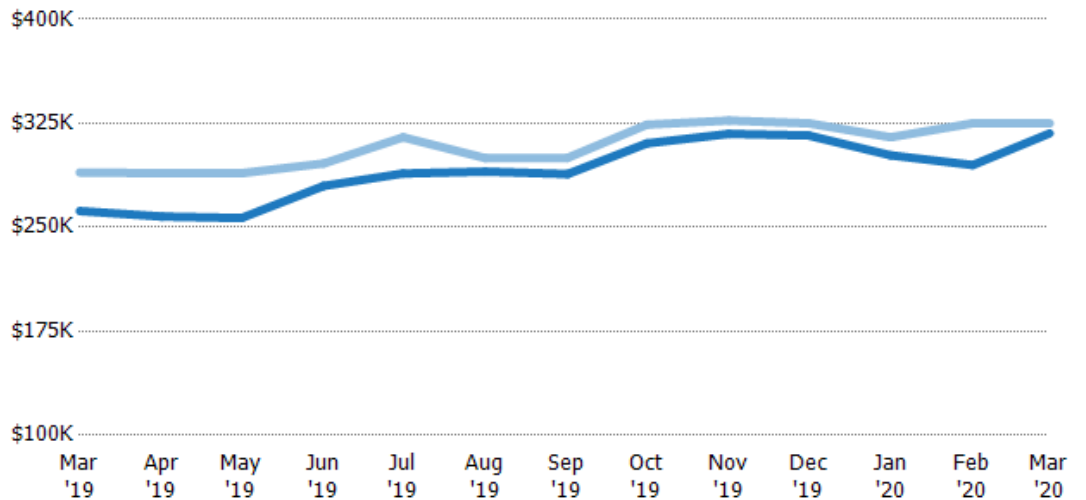


## Median Listing Price vs Median Est Value

The median listing price as a percentage of the median AVM or RVM® valuation estimate for active listings each month.

### Filters Used

State: VT  
 County: Bennington County,  
 Vermont  
 Property Type:  
 Condo/Townhouse/Apt, Single  
 Family Residence



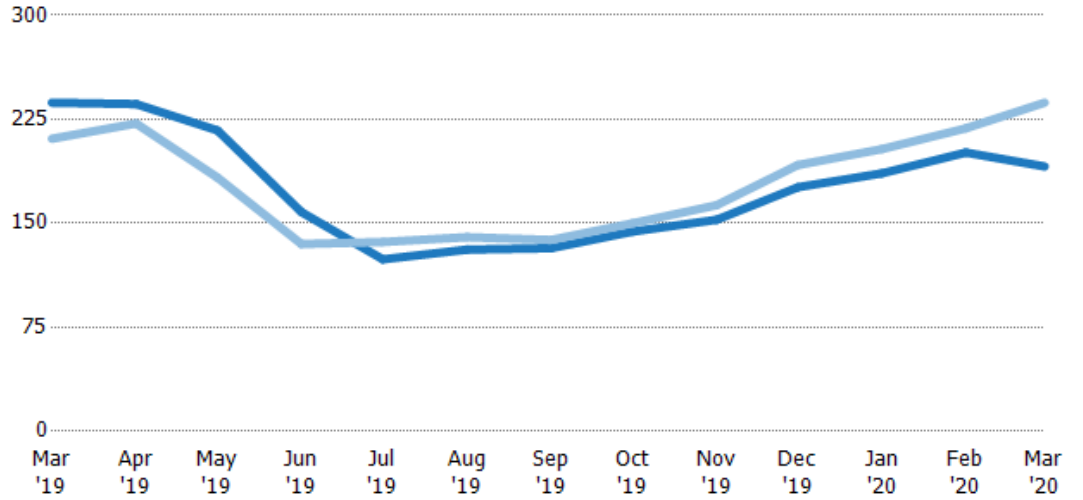
## Median Days in RPR

The median number of days between when residential properties are first displayed as active listings in RPR and when accepted offers have been noted in RPR.

### Filters Used

State: VT  
 County: Bennington County, Vermont  
 Property Type: Condo/Townhouse/Apt, Single Family Residence

Month/Year	Days	% Chg.
Mar '20	191	-19.4%
Mar '19	237	12.3%
Mar '18	211	4.7%



Current Year	237	236	217	158	124	131	132	144	153	176	186	201	191
Prior Year	211	222	183	135	137	140	138	150	163	192	204	219	237
Percent Change from Prior Year	12%	6%	19%	17%	-9%	-6%	-4%	-4%	-6%	-8%	-9%	-8%	-19%

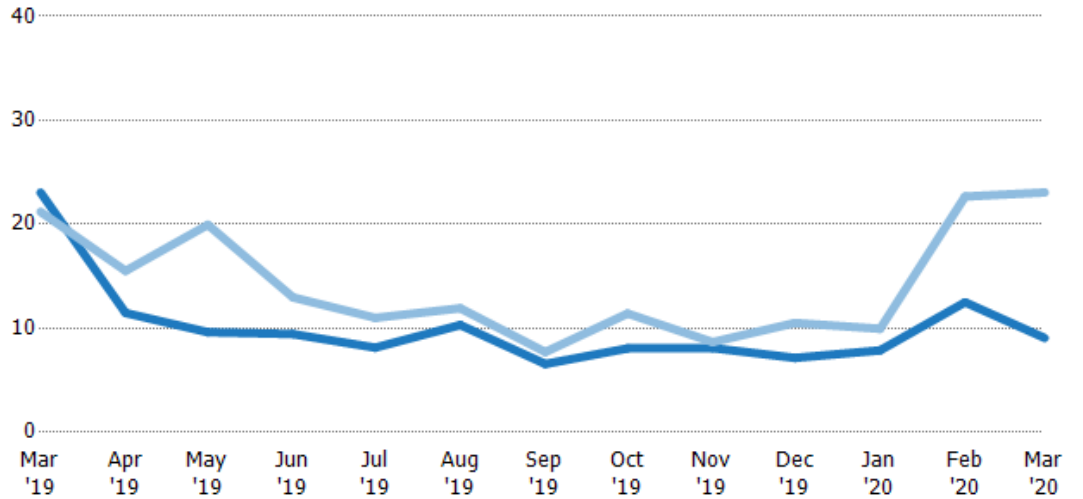
## Months of Inventory

The number of months it would take to exhaust active listings at the current sales rate.

### Filters Used

State: VT  
 County: Bennington County, Vermont  
 Property Type: Condo/Townhouse/Apt, Single Family Residence

Month/Year	Months	% Chg.
Mar '20	9.07	-60.7%
Mar '19	23.1	8.8%
Mar '18	21.2	47%



Current Year	23.1	11.5	9.63	9.44	8.14	10.3	6.57	8.07	8.1	7.15	7.88	12.5	9.07
Prior Year	21.2	15.5	20	13	11	11.9	7.71	11.4	8.67	10.5	9.95	22.7	23.1
Percent Change from Prior Year	9%	-26%	-52%	-27%	-26%	-13%	-15%	-29%	-7%	-32%	-21%	-45%	-61%

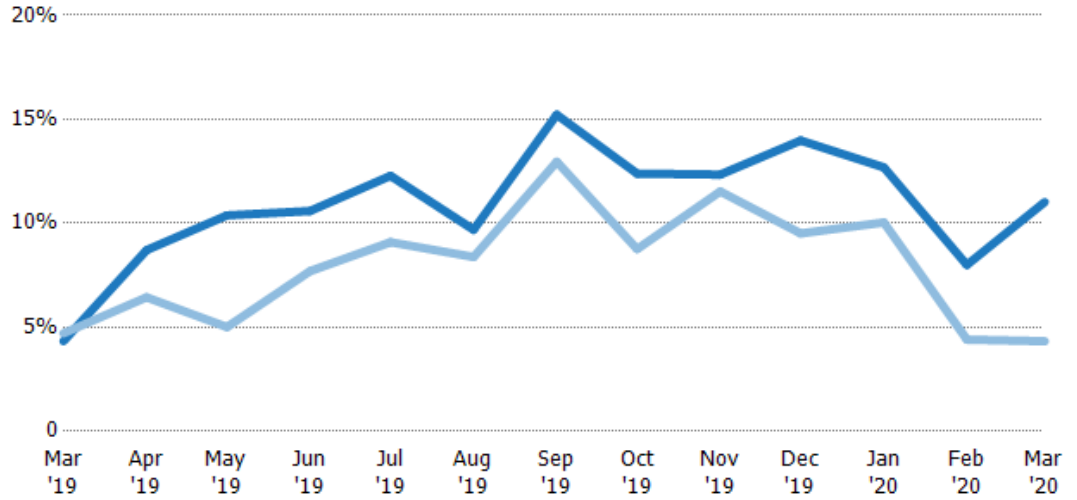
## Absorption Rate

The percentage of inventory sold per month.

### Filters Used

State: VT  
 County: Bennington County, Vermont  
 Property Type: Condo/Townhouse/Apt, Single Family Residence

Month/Year	Rate	Chg.
Mar '20	11%	-6.7%
Mar '19	4%	0.4%
Mar '18	5%	-32.1%



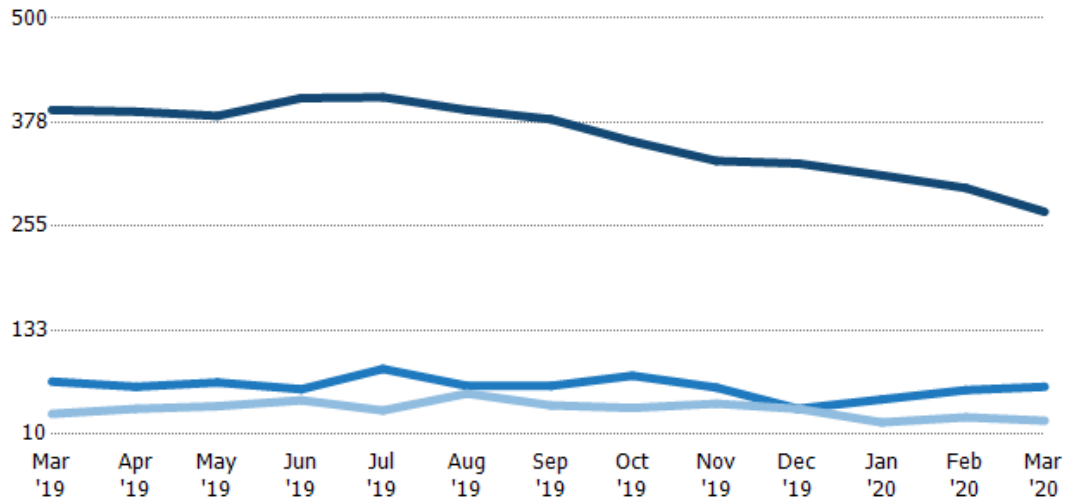
	Mar '19	Apr '19	May '19	Jun '19	Jul '19	Aug '19	Sep '19	Oct '19	Nov '19	Dec '19	Jan '20	Feb '20	Mar '20
Current Year	4%	9%	10%	11%	12%	10%	15%	12%	12%	14%	13%	8%	11%
Prior Year	5%	6%	5%	8%	9%	8%	13%	9%	12%	10%	10%	4%	4%
Change from Prior Year	0%	-2%	-5%	-3%	-3%	-1%	-2%	-4%	-1%	-4%	-3%	-4%	-7%

## Active/Pending/Sold Units

The number of residential properties that were Active, Pending and Sold each month.

### Filters Used

State: VT  
 County: Bennington County, Vermont  
 Property Type: Condo/Townhouse/Apt, Single Family Residence



	Mar '19	Apr '19	May '19	Jun '19	Jul '19	Aug '19	Sep '19	Oct '19	Nov '19	Dec '19	Jan '20	Feb '20	Mar '20
Active	392	390	385	406	407	392	381	355	332	329	315	300	272
Pending	72	66	71	63	87	67	67	79	65	40	51	62	66
Sold	34	40	43	50	38	58	44	41	46	40	24	30	26

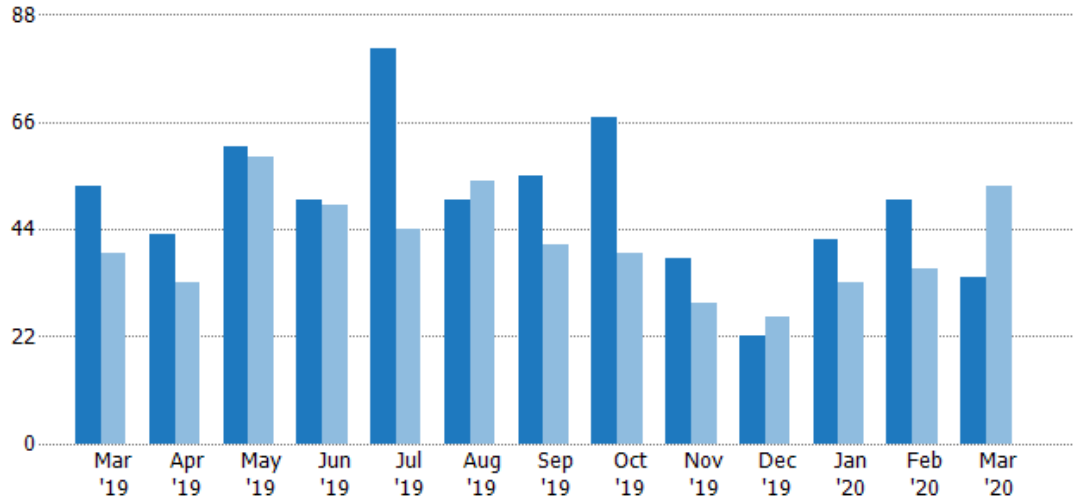
## New Pending Sales

The number of residential properties with accepted offers that were added each month.

### Filters Used

State: VT  
 County: Bennington County, Vermont  
 Property Type: Condo/Townhouse/Apt, Single Family Residence

Month/Year	Count	% Chg.
Mar '20	34	-35.8%
Mar '19	53	35.9%
Mar '18	39	-33.3%



Current Year	53	43	61	50	81	50	55	67	38	22	42	50	34
Prior Year	39	33	59	49	44	54	41	39	29	26	33	36	53
Percent Change from Prior Year	36%	30%	3%	2%	84%	-7%	34%	72%	31%	-15%	27%	39%	-36%

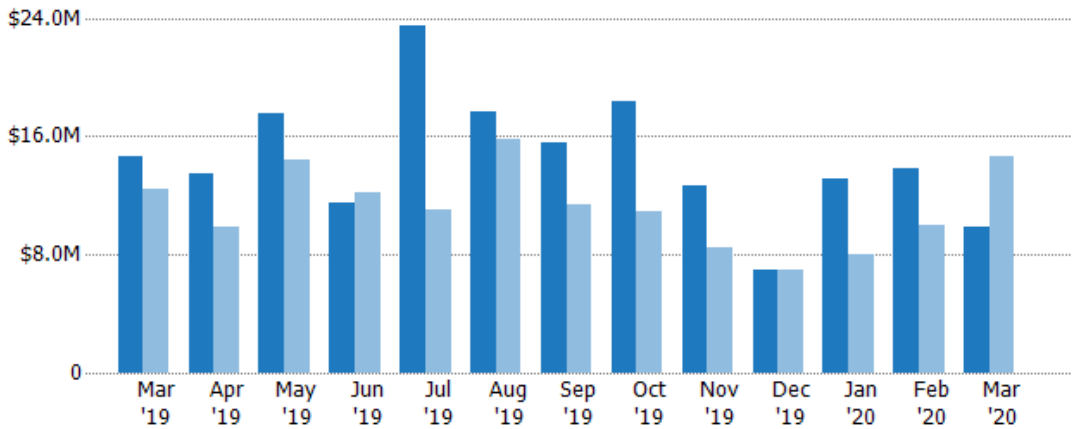
## New Pending Sales Volume

The sum of the sales price of residential properties with accepted offers that were added each month.

### Filters Used

State: VT  
 County: Bennington County, Vermont  
 Property Type: Condo/Townhouse/Apt, Single Family Residence

Month/Year	Volume	% Chg.
Mar '20	\$9.88M	-32.3%
Mar '19	\$14.6M	16.9%
Mar '18	\$12.5M	-44.1%



Current Year	\$14.6M	\$13.5M	\$17.5M	\$11.5M	\$23.5M	\$17.7M	\$15.5M	\$18.3M	\$12.7M	\$6.93M	\$13.1M	\$13.8M	\$9.88M
Prior Year	\$12.5M	\$9.87M	\$14.4M	\$12.2M	\$11.1M	\$15.8M	\$11.4M	\$10.9M	\$8.44M	\$7.01M	\$8.01M	\$10M	\$14.6M
Percent Change from Prior Year	17%	37%	21%	-6%	112%	12%	36%	68%	51%	-1%	63%	38%	-32%



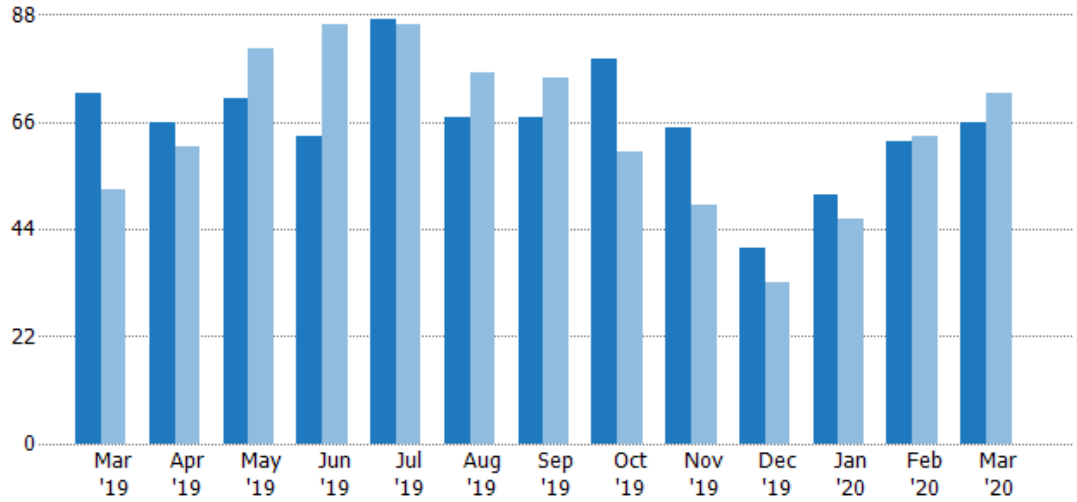
## Pending Sales

The number of residential properties with accepted offers that were available at the end each month.

### Filters Used

State: VT  
 County: Bennington County, Vermont  
 Property Type: Condo/Townhouse/Apt, Single Family Residence

Month/Year	Count	% Chg.
Mar '20	66	-8.3%
Mar '19	72	38.5%
Mar '18	52	-1.9%



Current Year	72	66	71	63	87	67	67	79	65	40	51	62	66
Prior Year	52	61	81	86	86	76	75	60	49	33	46	63	72
Percent Change from Prior Year	38%	8%	-12%	-27%	1%	-12%	-11%	32%	33%	21%	11%	-2%	-8%

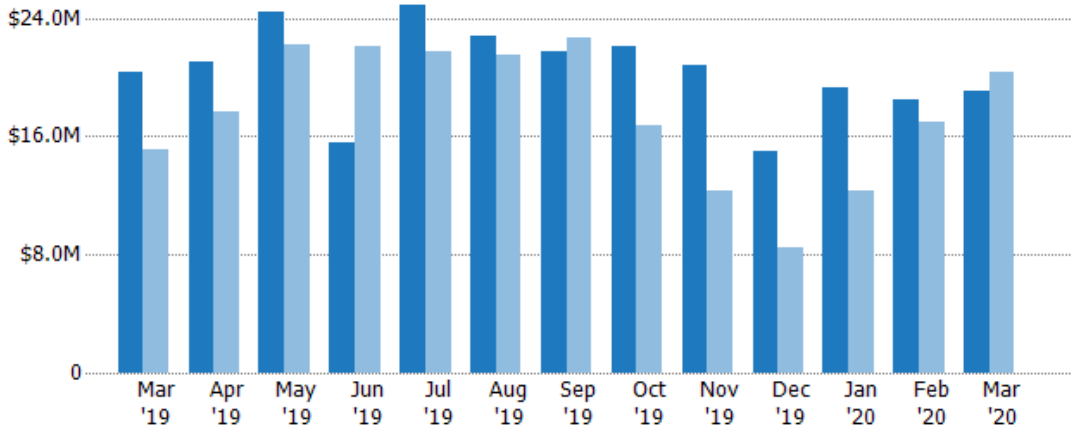
## Pending Sales Volume

The sum of the sales price of residential properties with accepted offers that were available at the end of each month.

### Filters Used

State: VT  
 County: Bennington County, Vermont  
 Property Type: Condo/Townhouse/Apt, Single Family Residence

Month/Year	Volume	% Chg.
Mar '20	\$19M	-6.5%
Mar '19	\$20.3M	35%
Mar '18	\$15.1M	8%



Current Year	\$20.3M	\$21.1M	\$24.4M	\$15.5M	\$24.9M	\$22.8M	\$21.7M	\$22M	\$20.8M	\$15M	\$19.3M	\$18.4M	\$19M
Prior Year	\$15.1M	\$17.6M	\$22.2M	\$22.1M	\$21.8M	\$21.5M	\$22.7M	\$16.7M	\$12.3M	\$8.49M	\$12.4M	\$17M	\$20.3M
Percent Change from Prior Year	35%	19%	10%	-30%	15%	6%	-4%	32%	69%	76%	56%	8%	-6%

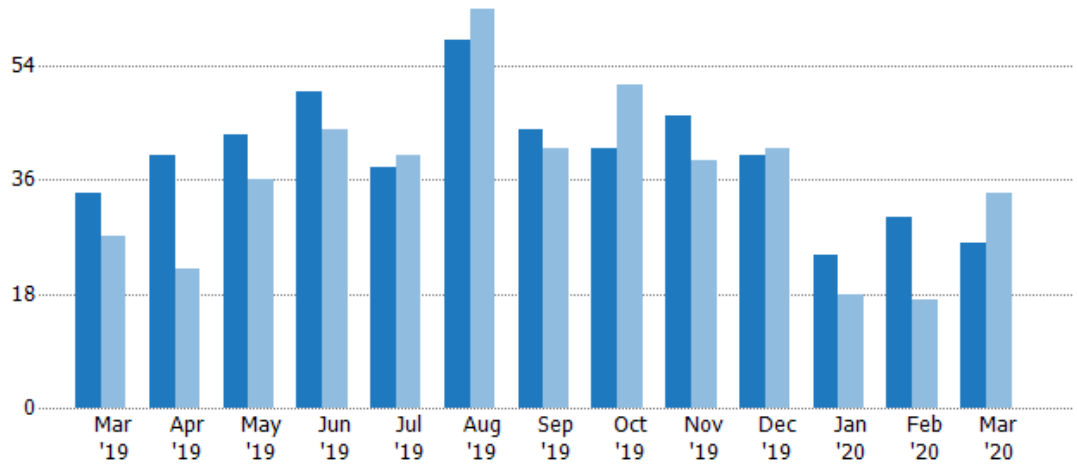
## Closed Sales

The total number of residential properties sold each month.

### Filters Used

State: VT  
 County: Bennington County, Vermont  
 Property Type: Condo/Townhouse/Apt, Single Family Residence

Month/Year	Count	% Chg.
Mar '20	26	-23.5%
Mar '19	34	25.9%
Mar '18	27	7.4%



Current Year	34	40	43	50	38	58	44	41	46	40	24	30	26
Prior Year	27	22	36	44	40	63	41	51	39	41	18	17	34
Percent Change from Prior Year	26%	82%	19%	14%	-5%	-8%	7%	-20%	18%	-2%	33%	76%	-24%

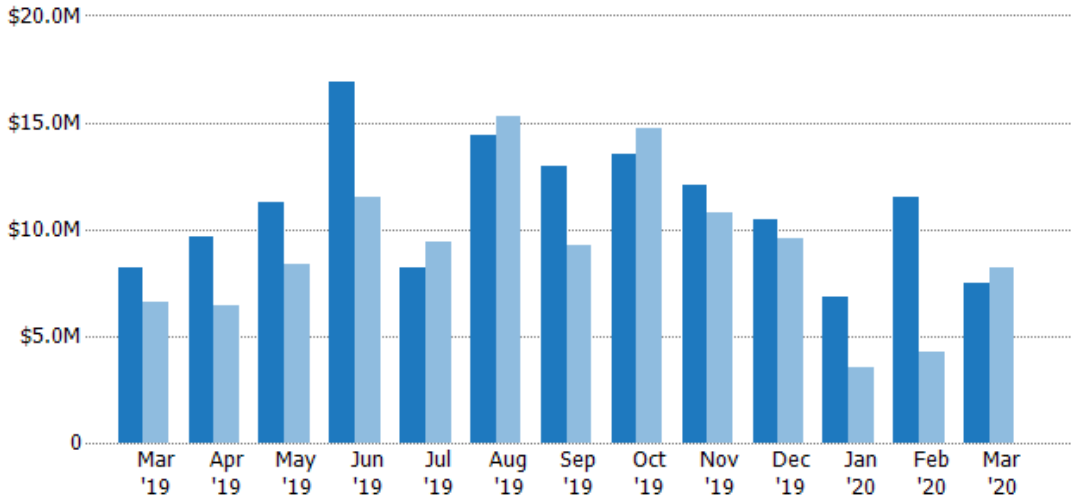
## Closed Sales Volume

The sum of the sales price of residential properties sold each month.

### Filters Used

State: VT  
 County: Bennington County, Vermont  
 Property Type: Condo/Townhouse/Apt, Single Family Residence

Month/Year	Volume	% Chg.
Mar '20	\$7.48M	-9.1%
Mar '19	\$8.23M	25.2%
Mar '18	\$6.57M	3.5%



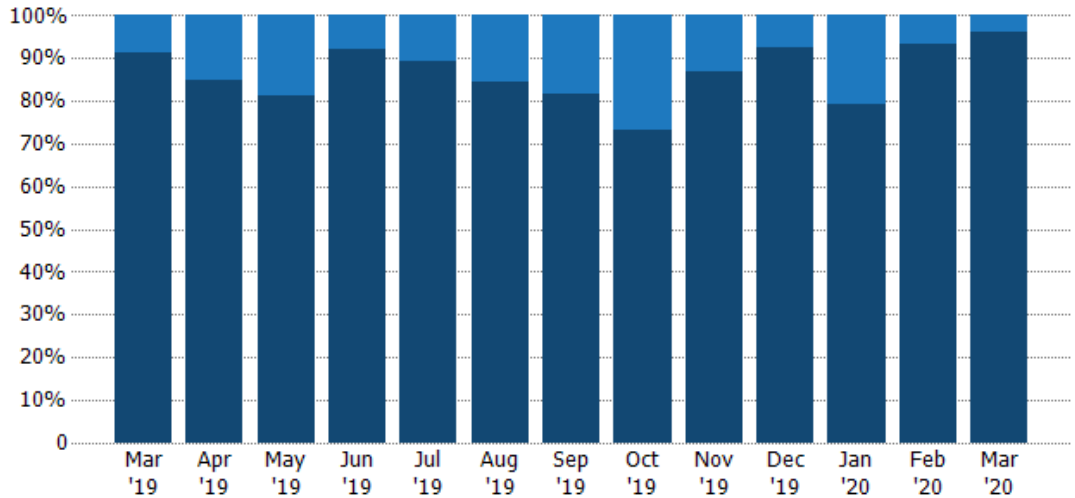
Current Year	\$8.23M	\$9.62M	\$11.2M	\$16.9M	\$8.17M	\$14.4M	\$13M	\$13.5M	\$12.1M	\$10.4M	\$6.8M	\$11.5M	\$7.48M
Prior Year	\$6.57M	\$6.46M	\$8.4M	\$11.5M	\$9.42M	\$15.3M	\$9.28M	\$14.7M	\$10.7M	\$9.57M	\$3.53M	\$4.29M	\$8.23M
Percent Change from Prior Year	25%	49%	34%	47%	-13%	-6%	40%	-8%	12%	9%	93%	167%	-9%

## Closed Sales by Property Type

The percentage of residential properties sold each month by property type.

### Filters Used

State: VT  
 County: Bennington County, Vermont  
 Property Type: Condo/Townhouse/Apt, Single Family Residence



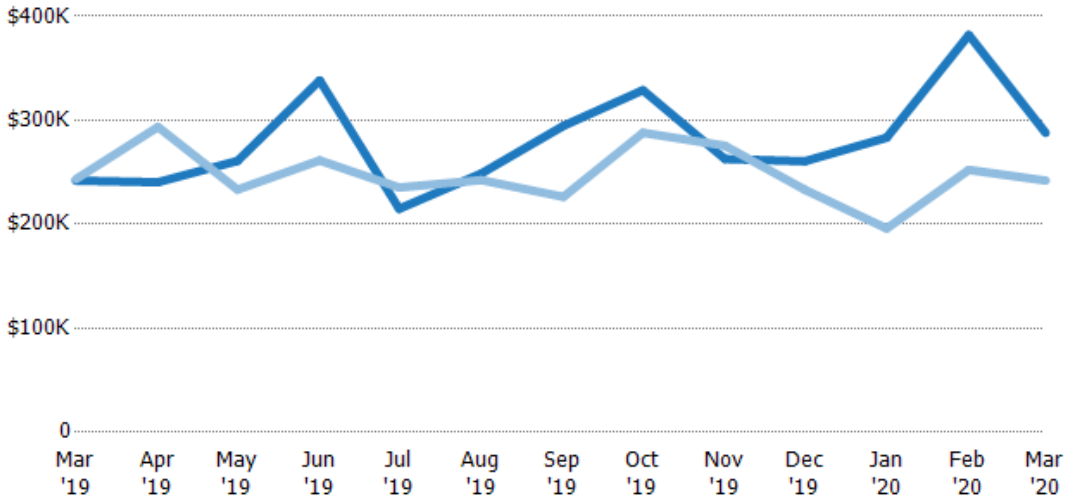
Condo/Townhouse	9%	15%	19%	8%	11%	16%	18%	27%	13%	8%	21%	7%	4%
Single Family Residence	91%	85%	81%	92%	89%	84%	82%	73%	87%	93%	79%	93%	96%

## Average Sales Price

The average sales price of the residential properties sold each month.

### Filters Used

State: VT  
 County: Bennington County, Vermont  
 Property Type: Condo/Townhouse/Apt, Single Family Residence



Current Year	\$242K	\$240K	\$261K	\$338K	\$215K	\$249K	\$295K	\$329K	\$263K	\$261K	\$283K	\$382K	\$288K
Prior Year	\$243K	\$294K	\$233K	\$261K	\$235K	\$242K	\$226K	\$288K	\$275K	\$233K	\$196K	\$252K	\$242K
Percent Change from Prior Year	-1%	-18%	12%	29%	-9%	3%	30%	14%	-5%	12%	45%	51%	19%

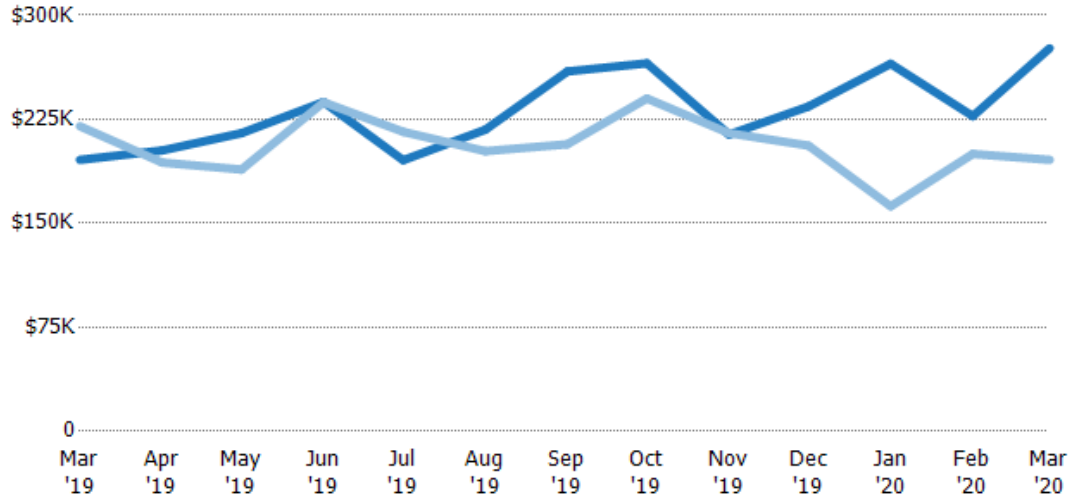
## Median Sales Price

The median sales price of the residential properties sold each month.

### Filters Used

State: VT  
 County: Bennington County, Vermont  
 Property Type: Condo/Townhouse/Apt, Single Family Residence

Month/Year	Price	% Chg.
Mar '20	\$276K	41.1%
Mar '19	\$196K	-11%
Mar '18	\$220K	-14.8%



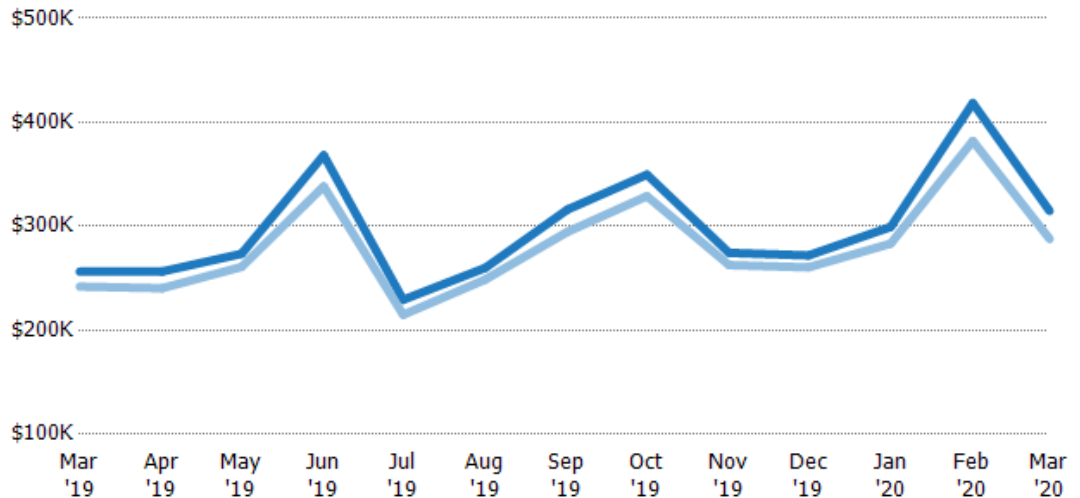
Current Year	\$196K	\$203K	\$215K	\$238K	\$196K	\$218K	\$260K	\$265K	\$214K	\$234K	\$265K	\$227K	\$276K
Prior Year	\$220K	\$194K	\$189K	\$237K	\$216K	\$202K	\$207K	\$240K	\$215K	\$206K	\$162K	\$200K	\$196K
Percent Change from Prior Year	-11%	4%	14%	0%	-9%	8%	25%	11%	0%	14%	63%	14%	41%

## Average Sales Price vs Average Listing Price

The average sales price as a percentage of the average listing price for properties sold each month.

### Filters Used

State: VT  
 County: Bennington County, Vermont  
 Property Type: Condo/Townhouse/Apt, Single Family Residence



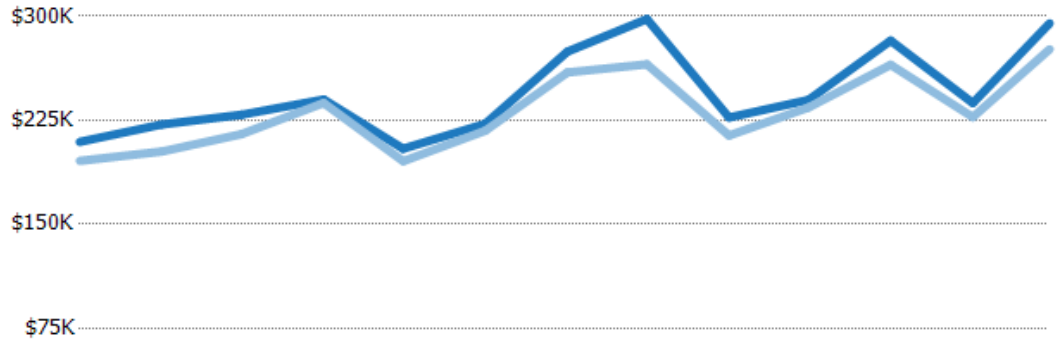
Avg List Price	\$256K	\$256K	\$274K	\$368K	\$229K	\$260K	\$316K	\$350K	\$274K	\$272K	\$299K	\$418K	\$315K
Avg Sales Price	\$242K	\$240K	\$261K	\$338K	\$215K	\$249K	\$295K	\$329K	\$263K	\$261K	\$283K	\$382K	\$288K
Avg Sales Price as a % of Avg List Price	94%	94%	95%	92%	94%	96%	93%	94%	96%	96%	95%	91%	91%

## Median Sales Price vs Median Listing Price

The median sales price as a percentage of the median listing price for properties sold each month.

### Filters Used

State: VT  
 County: Bennington County, Vermont  
 Property Type: Condo/Townhouse/Apt, Single Family Residence



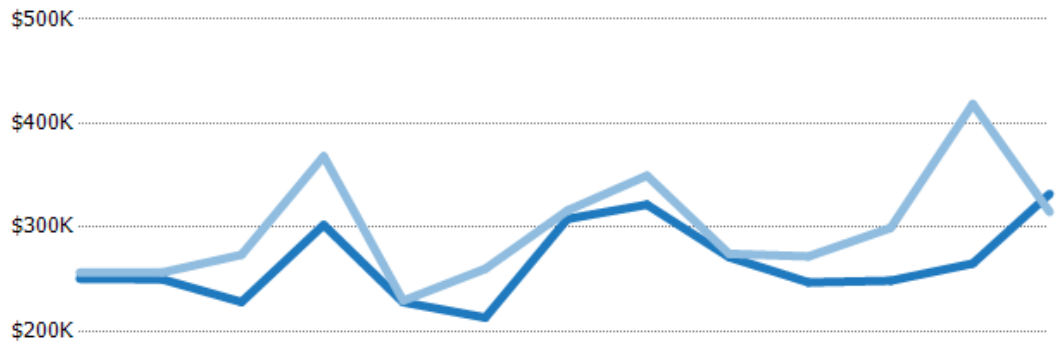
	Mar '19	Apr '19	May '19	Jun '19	Jul '19	Aug '19	Sep '19	Oct '19	Nov '19	Dec '19	Jan '20	Feb '20	Mar '20
Median List Price	\$209K	\$222K	\$229K	\$240K	\$205K	\$222K	\$275K	\$298K	\$227K	\$240K	\$282K	\$237K	\$295K
Median Sales Price	\$196K	\$203K	\$215K	\$238K	\$196K	\$218K	\$260K	\$265K	\$214K	\$234K	\$265K	\$227K	\$276K
Med Sales Price as a % of Med List Price	93%	91%	94%	99%	96%	98%	95%	89%	94%	98%	94%	96%	94%

## Average Sales Price vs Average Est Value

The average sales price as a percentage of the average AVM or RVM® valuation estimate for properties sold each month.

### Filters Used

State: VT  
 County: Bennington County, Vermont  
 Property Type: Condo/Townhouse/Apt, Single Family Residence



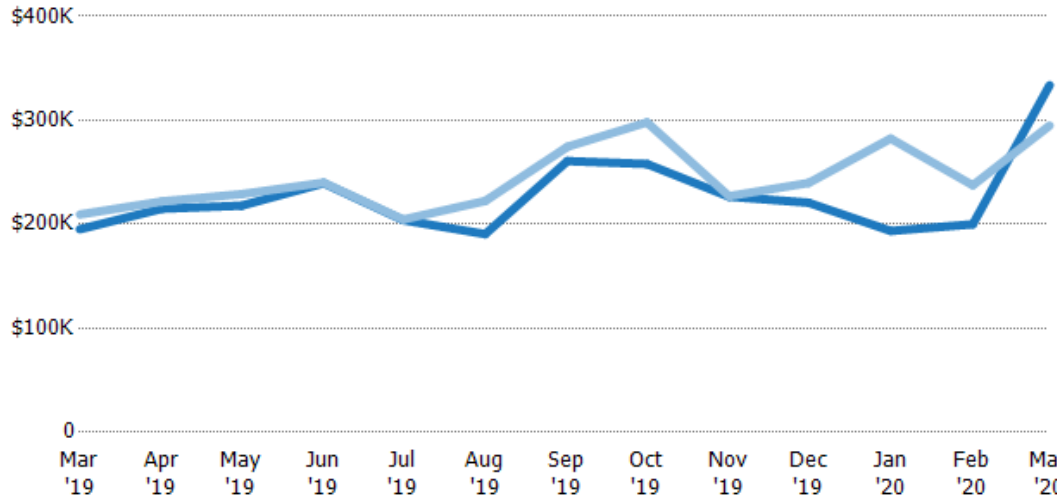
	Mar '19	Apr '19	May '19	Jun '19	Jul '19	Aug '19	Sep '19	Oct '19	Nov '19	Dec '19	Jan '20	Feb '20	Mar '20
Avg Est Value	\$251K	\$250K	\$228K	\$302K	\$228K	\$213K	\$308K	\$322K	\$271K	\$247K	\$249K	\$265K	\$332K
Avg Sales Price	\$256K	\$256K	\$274K	\$368K	\$229K	\$260K	\$316K	\$350K	\$274K	\$272K	\$299K	\$418K	\$315K
Avg Sales Price as a % of Avg Est Value	102%	103%	120%	122%	101%	122%	103%	109%	101%	110%	120%	158%	95%

## Median Sales Price vs Median Est Value

The median sales price as a percent of the median AVM or RVM® valuation estimate for properties sold each month.

### Filters Used

State: VT  
 County: Bennington County, Vermont  
 Property Type: Condo/Townhouse/Apt, Single Family Residence



	Mar '19	Apr '19	May '19	Jun '19	Jul '19	Aug '19	Sep '19	Oct '19	Nov '19	Dec '19	Jan '20	Feb '20	Mar '20
Median Est Value	\$195K	\$215K	\$218K	\$239K	\$204K	\$191K	\$261K	\$258K	\$227K	\$221K	\$194K	\$200K	\$334K
Median Sales Price	\$209K	\$222K	\$229K	\$240K	\$205K	\$222K	\$275K	\$298K	\$227K	\$240K	\$282K	\$237K	\$295K
Med Sales Price as a % of Med Est Value	107%	103%	105%	100%	100%	117%	105%	116%	100%	109%	146%	119%	88%