

## Summary of Key Listing and Sales Metrics

A summary of the key metrics selected to be included in the report. MLS sources where licensed.

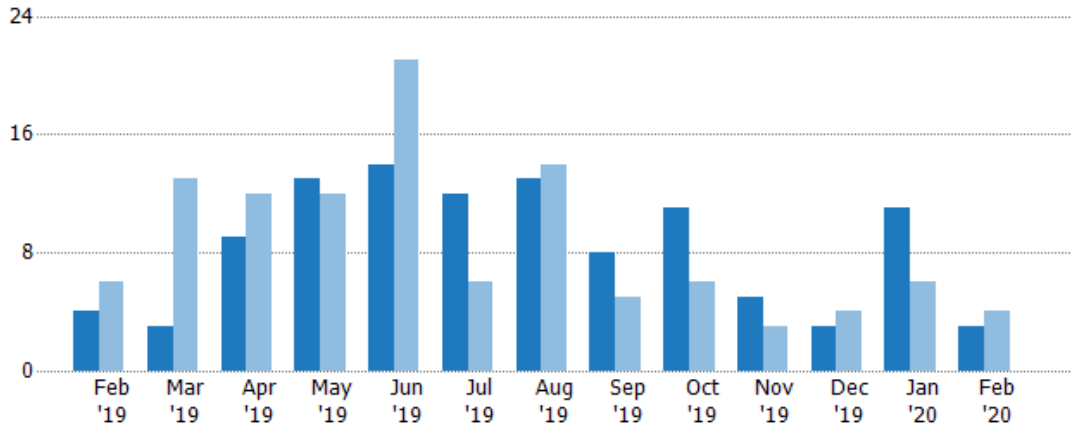
Key Metrics	Feb 2020	Feb 2019	+ / -	YTD 2020	YTD 2019	+ / -
<b>Listing Activity Charts Metrics</b>						
New Listing Count	3	4	-25%	14	10	+40%
New Listing Volume	\$488,800	\$560,400	-12.8%	\$2,234,500	\$1,718,000	+30.1%
Active Listing Count	38	47	-19.1%	N/A	N/A	
Active Listing Volume	\$7,254,899	\$9,870,284	-26.5%	N/A	N/A	
Average Listing Price	\$190,918	\$210,006	-9.1%	\$187,314	\$206,102	-9.1%
Median Listing Price	\$159,900	\$189,900	-15.8%	\$159,900	\$189,900	-15.8%
Median Days in RPR	187	232	-19.4%	175.89	219.71	-19.9%
Months of Inventory	7.6	23.5	-67.7%	11.3	19.6	-42.4%
Absorption Rate	13.16%	4.26%	+8.9%	8.86%	5.1%	+3.8%
<b>Sales Activity Charts Metrics</b>						
New Pending Sales Count	6	6	+—	10	9	+11.1%
New Pending Sales Volume	\$682,320	\$858,900	-20.6%	\$1,218,120	\$1,276,800	-4.6%
Pending Sales Count	9	5	+80%	N/A	N/A	
Pending Sales Volume	\$1,362,220	\$754,000	+80.7%	N/A	N/A	
Closed Sales Count	4	5	-20%	9	7	+28.6%
Closed Sales Volume	\$390,400	\$647,500	-39.7%	\$933,329	\$838,400	+11.3%
Average Sales Price	\$97,600	\$129,500	-24.6%	\$103,703	\$119,771	-13.4%
Median Sales Price	\$109,200	\$155,000	-29.5%	\$113,256	\$137,986	-17.9%

## New Listings

The number of new residential listings that were added each month.

### Filters Used

ZIP: Newport, VT 05855  
 Property Type:  
 Condo/Townhouse/Apt, Single  
 Family Residence



Month/Year	Count	% Chg.
Feb '20	3	-25%
Feb '19	4	-33.3%
Feb '18	6	-16.7%

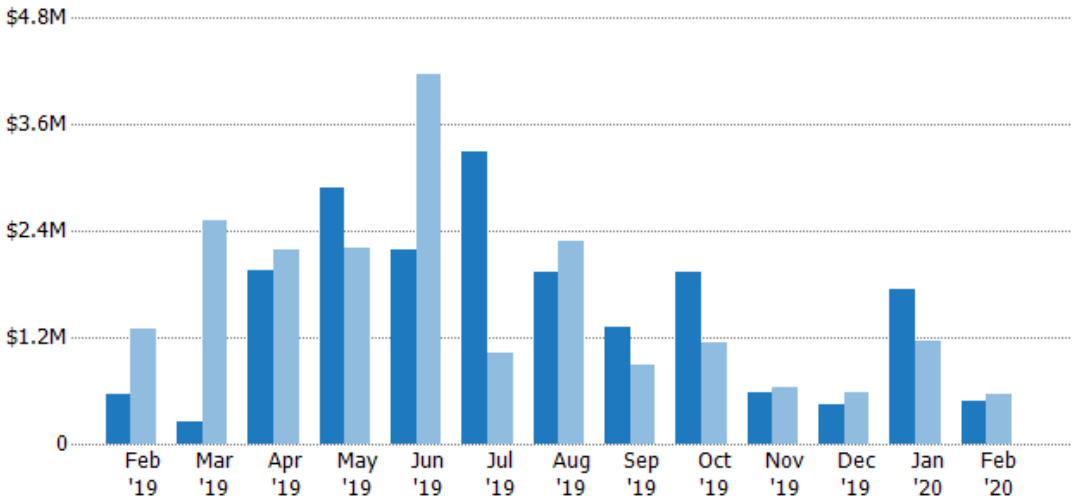
	Feb '19	Mar '19	Apr '19	May '19	Jun '19	Jul '19	Aug '19	Sep '19	Oct '19	Nov '19	Dec '19	Jan '20	Feb '20
Current Year	4	3	9	13	14	12	13	8	11	5	3	11	3
Prior Year	6	13	12	12	21	6	14	5	6	3	4	6	4
Percent Change from Prior Year	-33%	-77%	-25%	8%	-33%	100%	-7%	60%	83%	67%	-25%	83%	-25%

## New Listing Volume

The sum of the listing price of residential listings that were added each month.

### Filters Used

ZIP: Newport, VT 05855  
 Property Type:  
 Condo/Townhouse/Apt, Single  
 Family Residence



Month/Year	Volume	% Chg.
Feb '20	\$489K	-12.8%
Feb '19	\$560K	-56.7%
Feb '18	\$1.29M	8%

	Feb '19	Mar '19	Apr '19	May '19	Jun '19	Jul '19	Aug '19	Sep '19	Oct '19	Nov '19	Dec '19	Jan '20	Feb '20
Current Year	\$560K	\$253K	\$1.96M	\$2.89M	\$2.19M	\$3.3M	\$1.94M	\$1.32M	\$1.93M	\$575K	\$444K	\$1.75M	\$489K
Prior Year	\$1.29M	\$2.53M	\$2.18M	\$2.21M	\$4.17M	\$1.02M	\$2.29M	\$892K	\$1.13M	\$644K	\$584K	\$1.16M	\$560K
Percent Change from Prior Year	-57%	-90%	-10%	31%	-48%	223%	-15%	48%	71%	-11%	-24%	51%	-13%

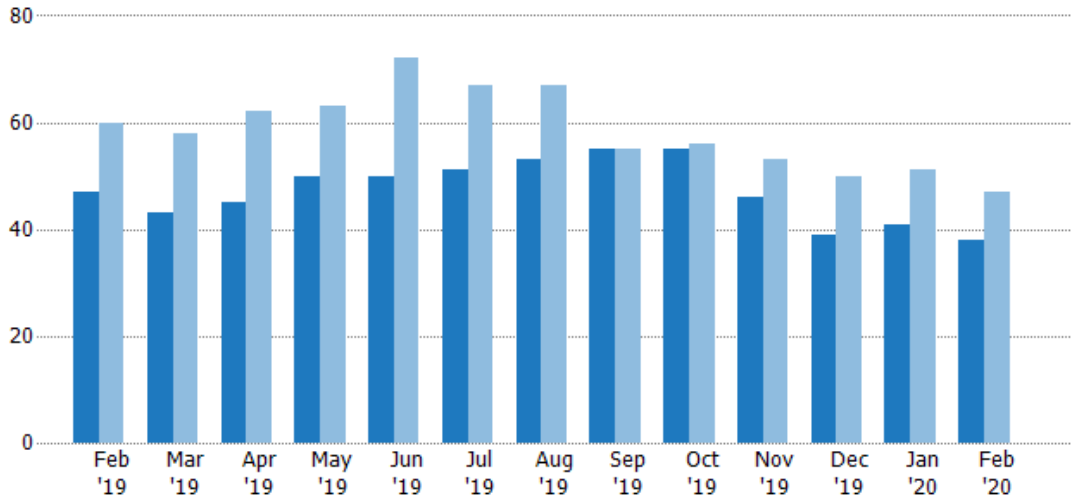
## Active Listings

The number of active residential listings at the end of each month.

### Filters Used

ZIP: Newport, VT 05855  
 Property Type:  
 Condo/Townhouse/Apt, Single  
 Family Residence

Month/Year	Count	% Chg.
Feb '20	38	-19.1%
Feb '19	47	-21.7%
Feb '18	60	-40%



	Feb '19	Mar '19	Apr '19	May '19	Jun '19	Jul '19	Aug '19	Sep '19	Oct '19	Nov '19	Dec '19	Jan '20	Feb '20
Current Year	47	43	45	50	50	51	53	55	55	46	39	41	38
Prior Year	60	58	62	63	72	67	67	55	56	53	50	51	47
Percent Change from Prior Year	-22%	-26%	-27%	-21%	-31%	-24%	-21%	0%	-2%	-13%	-22%	-20%	-19%

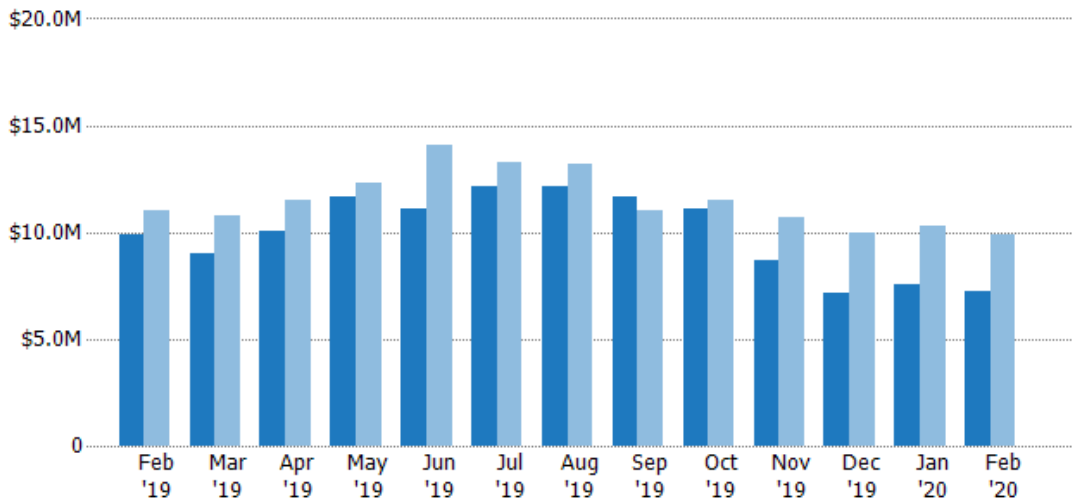
## Active Listing Volume

The sum of the listing price of active residential listings at the end of each month.

### Filters Used

ZIP: Newport, VT 05855  
 Property Type:  
 Condo/Townhouse/Apt, Single  
 Family Residence

Month/Year	Volume	% Chg.
Feb '20	\$7.25M	-26.5%
Feb '19	\$9.87M	-10.1%
Feb '18	\$11M	-34.5%



	Feb '19	Mar '19	Apr '19	May '19	Jun '19	Jul '19	Aug '19	Sep '19	Oct '19	Nov '19	Dec '19	Jan '20	Feb '20
Current Year	\$9.87M	\$9M	\$10M	\$11.6M	\$11.1M	\$12.1M	\$12.2M	\$11.7M	\$11.1M	\$8.64M	\$7.18M	\$7.54M	\$7.25M
Prior Year	\$11M	\$10.8M	\$11.5M	\$12.3M	\$14.1M	\$13.3M	\$13.2M	\$11M	\$11.5M	\$10.7M	\$10M	\$10.3M	\$9.87M
Percent Change from Prior Year	-10%	-16%	-13%	-6%	-21%	-9%	-8%	6%	-4%	-19%	-28%	-27%	-26%

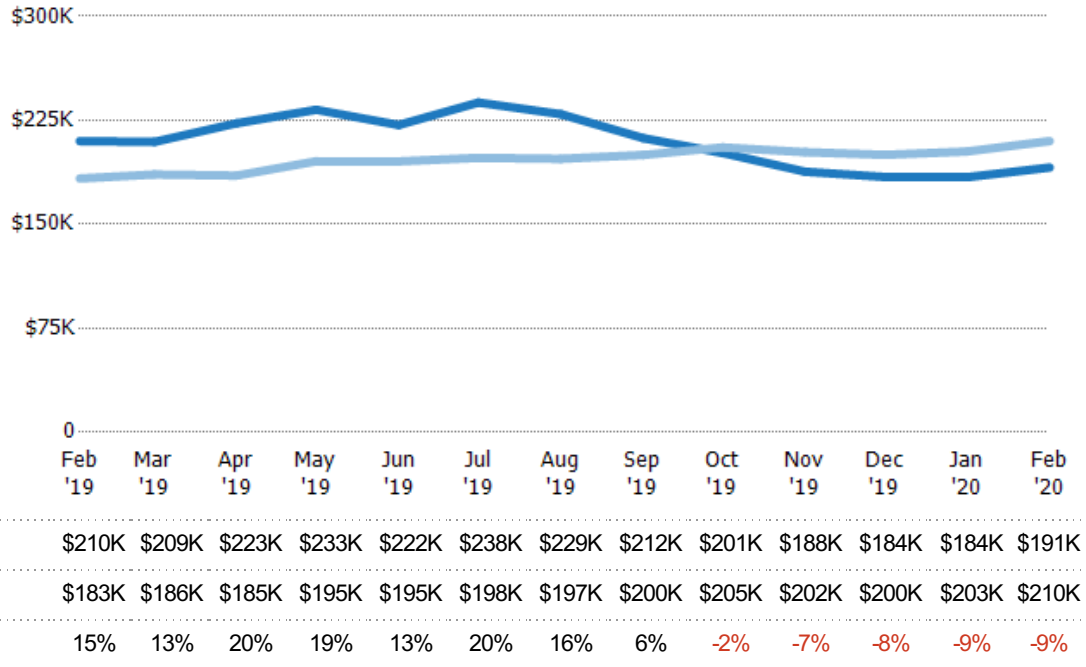
## Average Listing Price

The average listing price of active residential listings at the end of each month.

### Filters Used

ZIP: Newport, VT 05855  
 Property Type:  
 Condo/Townhouse/Apt, Single  
 Family Residence

Month/Year	Price	% Chg.
Feb '20	\$191K	-9.1%
Feb '19	\$210K	14.7%
Feb '18	\$183K	9.1%



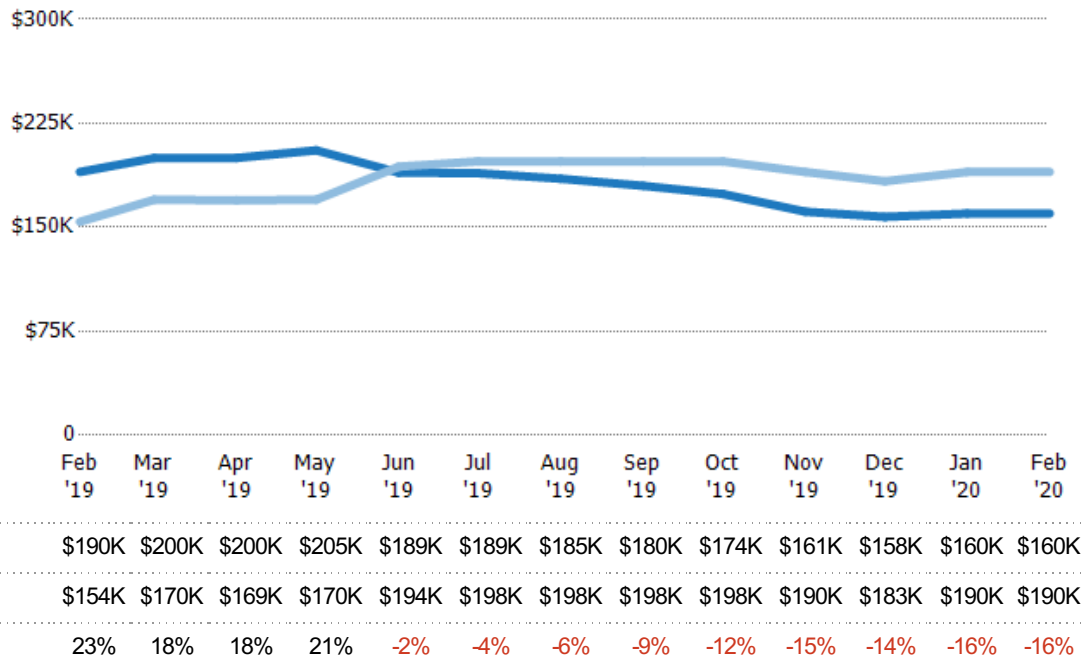
## Median Listing Price

The median listing price of active residential listings at the end of each month.

### Filters Used

ZIP: Newport, VT 05855  
 Property Type:  
 Condo/Townhouse/Apt, Single  
 Family Residence

Month/Year	Price	% Chg.
Feb '20	\$160K	-15.8%
Feb '19	\$190K	23.4%
Feb '18	\$154K	8.8%

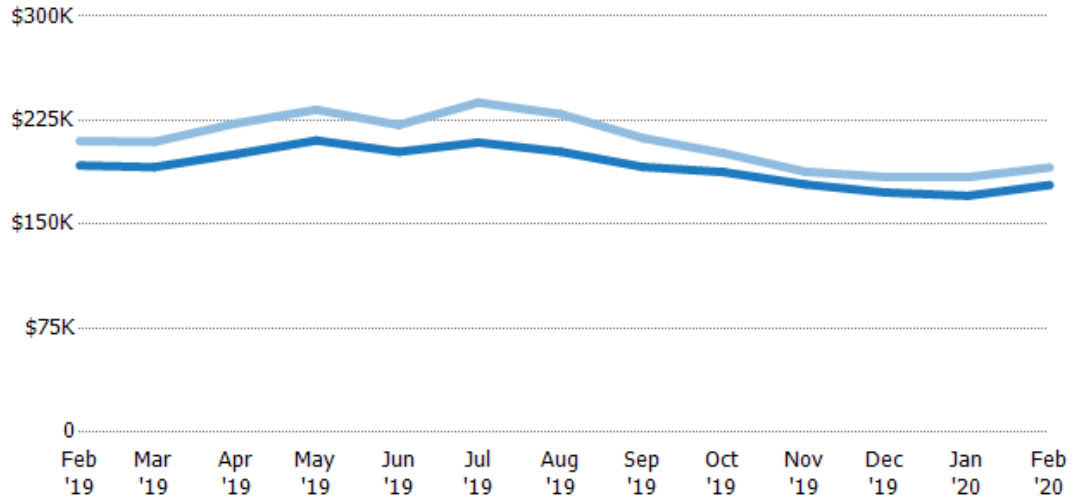


## Average Listing Price vs Average Est Value

The average listing price as a percentage of the average AVM or RVM® valuation estimate for active listings each month.

### Filters Used

ZIP: Newport, VT 05855  
 Property Type:  
 Condo/Townhouse/Apt, Single  
 Family Residence



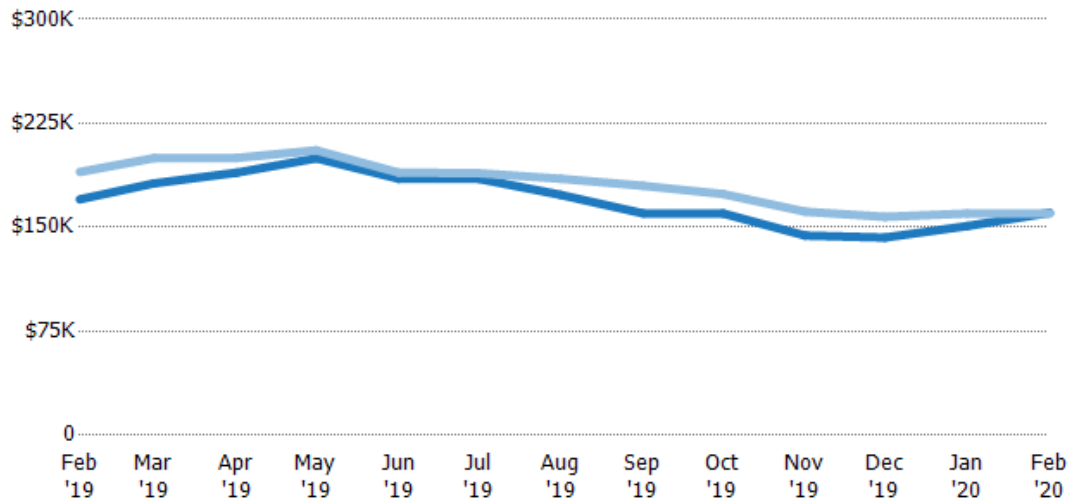
	Feb '19	Mar '19	Apr '19	May '19	Jun '19	Jul '19	Aug '19	Sep '19	Oct '19	Nov '19	Dec '19	Jan '20	Feb '20
Avg Est Value	\$192K	\$191K	\$201K	\$210K	\$202K	\$209K	\$202K	\$191K	\$188K	\$179K	\$173K	\$171K	\$178K
Avg Listing Price	\$210K	\$209K	\$223K	\$233K	\$222K	\$238K	\$229K	\$212K	\$201K	\$188K	\$184K	\$184K	\$191K
Avg Listing Price as a % of Avg Est Value	109%	110%	111%	111%	110%	114%	113%	111%	107%	105%	106%	108%	107%

## Median Listing Price vs Median Est Value

The median listing price as a percentage of the median AVM or RVM® valuation estimate for active listings each month.

### Filters Used

ZIP: Newport, VT 05855  
 Property Type:  
 Condo/Townhouse/Apt, Single  
 Family Residence



	Feb '19	Mar '19	Apr '19	May '19	Jun '19	Jul '19	Aug '19	Sep '19	Oct '19	Nov '19	Dec '19	Jan '20	Feb '20
Median Est Value	\$170K	\$182K	\$189K	\$200K	\$185K	\$185K	\$173K	\$160K	\$160K	\$144K	\$143K	\$151K	\$160K
Median Listing Price	\$190K	\$200K	\$200K	\$205K	\$189K	\$189K	\$185K	\$180K	\$174K	\$161K	\$158K	\$160K	\$160K
Med Listing Price as a % of Med Est Value	112%	110%	106%	103%	102%	102%	107%	112%	109%	112%	110%	106%	100%

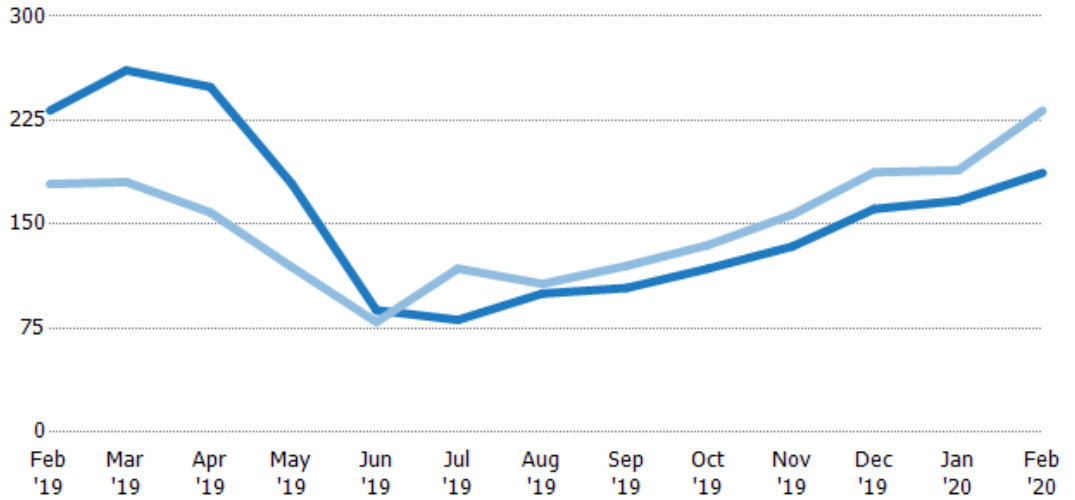
## Median Days in RPR

The median number of days between when residential properties are first displayed as active listings in RPR and when accepted offers have been noted in RPR.

### Filters Used

ZIP: Newport, VT 05855  
 Property Type:  
 Condo/Townhouse/Apt, Single  
 Family Residence

Month/Year	Days	% Chg.
Feb '20	187	-19.4%
Feb '19	232	29.6%
Feb '18	179	-20.7%



Current Year	232	261	249	179	88	81	100	104	118	134	161	167	187
Prior Year	179	181	159	119	79.5	118	107	120	135	157	188	189	232
Percent Change from Prior Year	30%	45%	57%	50%	11%	-31%	-7%	-13%	-13%	-15%	-14%	-12%	-19%

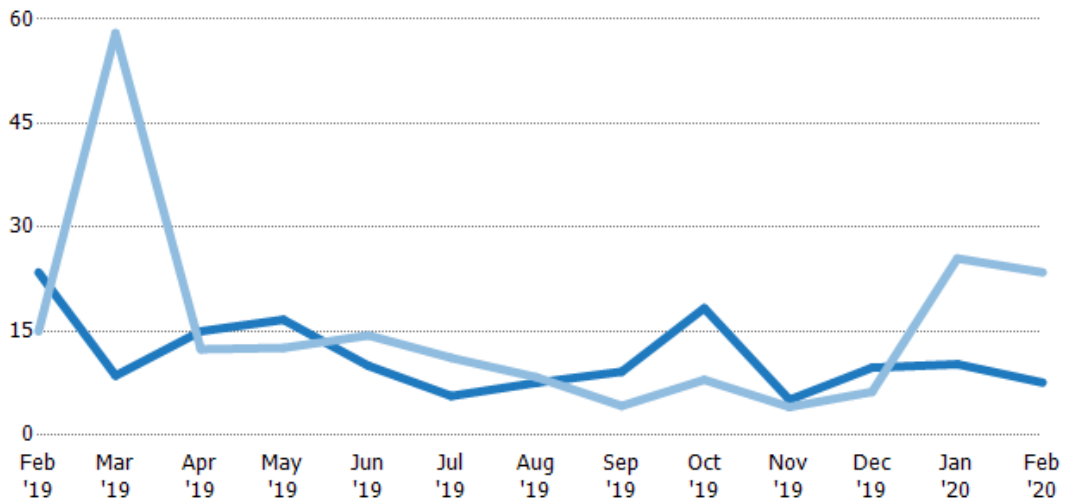
## Months of Inventory

The number of months it would take to exhaust active listings at the current sales rate.

### Filters Used

ZIP: Newport, VT 05855  
 Property Type:  
 Condo/Townhouse/Apt, Single  
 Family Residence

Month/Year	Months	% Chg.
Feb '20	7.6	-67.7%
Feb '19	23.5	56.7%
Feb '18	15	140%



Current Year	23.5	8.6	15	16.7	10	5.67	7.57	9.17	18.3	5.11	9.75	10.3	7.6
Prior Year	15	58	12.4	12.6	14.4	11.2	8.38	4.23	8	4.08	6.25	25.5	23.5
Percent Change from Prior Year	57%	-85%	21%	32%	-31%	-49%	-10%	117%	129%	25%	56%	-60%	-68%

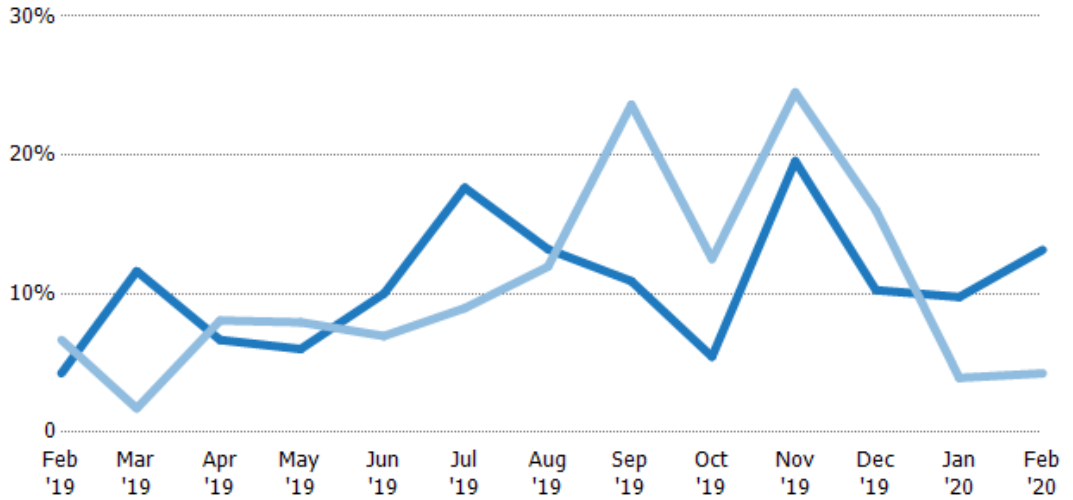
## Absorption Rate

The percentage of inventory sold per month.

### Filters Used

ZIP: Newport, VT 05855  
 Property Type:  
 Condo/Townhouse/Apt, Single  
 Family Residence

Month/ Year	Rate	Chg.
Feb '20	13%	-8.9%
Feb '19	4%	2.4%
Feb '18	7%	-58.4%



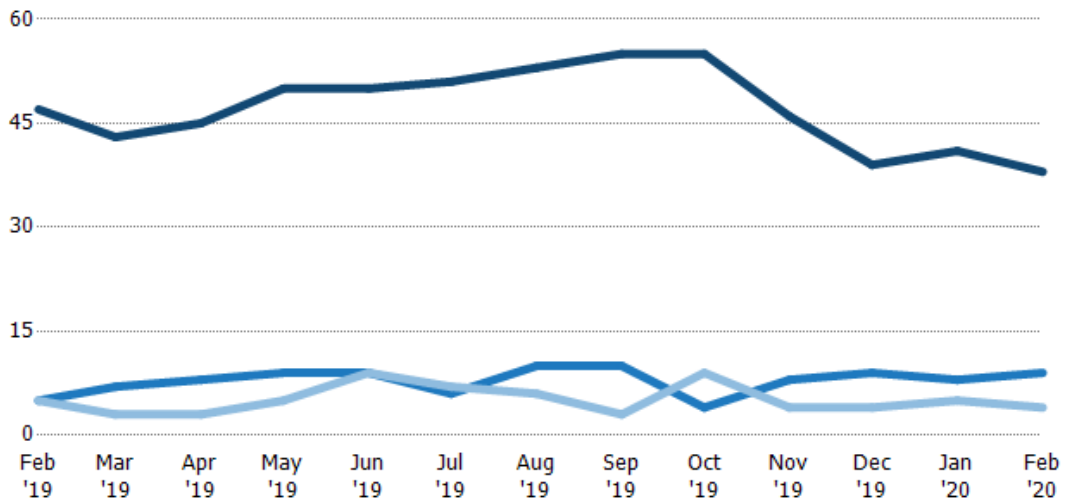
Current Year	4%	12%	7%	6%	10%	18%	13%	11%	5%	20%	10%	10%	13%
Prior Year	7%	2%	8%	8%	7%	9%	12%	24%	13%	25%	16%	4%	4%
Change from Prior Year	2%	-10%	1%	2%	-3%	-9%	-1%	13%	7%	5%	6%	-6%	-9%

## Active/Pending/Sold Units

The number of residential properties that were Active, Pending and Sold each month.

### Filters Used

ZIP: Newport, VT 05855  
 Property Type:  
 Condo/Townhouse/Apt, Single  
 Family Residence



Active	47	43	45	50	50	51	53	55	55	46	39	41	38
Pending	5	7	8	9	9	6	10	10	4	8	9	8	9
Sold	5	3	3	5	9	7	6	3	9	4	4	5	4

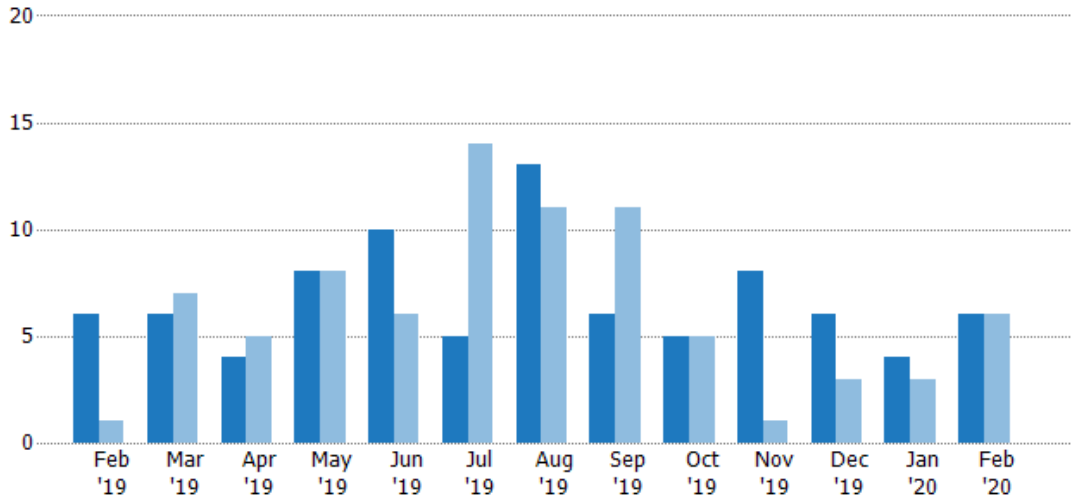
## New Pending Sales

The number of residential properties with accepted offers that were added each month.

### Filters Used

ZIP: Newport, VT 05855  
 Property Type:  
 Condo/Townhouse/Apt, Single  
 Family Residence

Month/Year	Count	% Chg.
Feb '20	6	0%
Feb '19	6	500%
Feb '18	1	0%



Current Year	6	6	4	8	10	5	13	6	5	8	6	4	6
Prior Year	1	7	5	8	6	14	11	11	5	1	3	3	6
Percent Change from Prior Year	500%	-14%	-20%	0%	67%	-64%	18%	-45%	0%	700%	100%	33%	0%

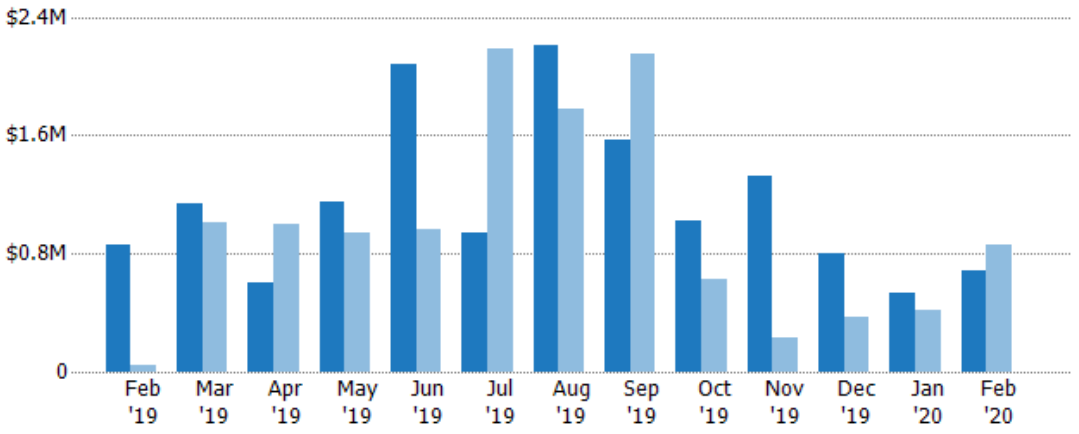
## New Pending Sales Volume

The sum of the sales price of residential properties with accepted offers that were added each month.

### Filters Used

ZIP: Newport, VT 05855  
 Property Type:  
 Condo/Townhouse/Apt, Single  
 Family Residence

Month/Year	Volume	% Chg.
Feb '20	\$682K	-20.6%
Feb '19	\$859K	2,074.4%
Feb '18	\$39.5K	633.9%



Current Year	\$859K	\$1.14M	\$605K	\$1.15M	\$2.08M	\$946K	\$2.2M	\$1.57M	\$1.02M	\$1.32M	\$804K	\$536K	\$682K
Prior Year	\$39.5K	\$1.01M	\$998K	\$942K	\$965K	\$2.18M	\$1.77M	\$2.15M	\$625K	\$235K	\$375K	\$418K	\$859K
Percent Change from Prior Year	2,074%	12%	-39%	22%	116%	-57%	24%	-27%	64%	461%	114%	28%	-21%



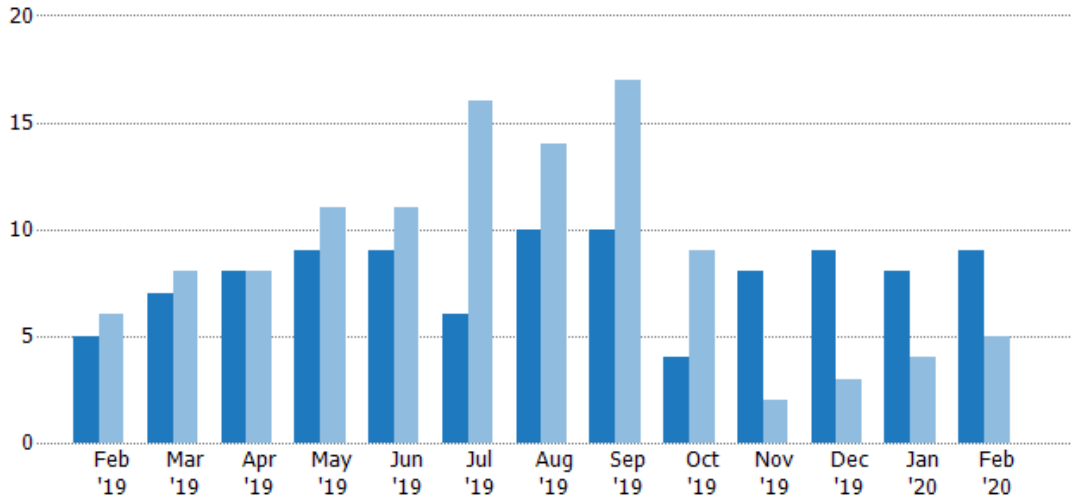
## Pending Sales

The number of residential properties with accepted offers that were available at the end each month.

### Filters Used

ZIP: Newport, VT 05855  
 Property Type:  
 Condo/Townhouse/Apt, Single  
 Family Residence

Month/ Year	Count	% Chg.
Feb '20	9	80%
Feb '19	5	-16.7%
Feb '18	6	-16.7%



Current Year	5	7	8	9	9	6	10	10	4	8	9	8	9
Prior Year	6	8	8	11	11	16	14	17	9	2	3	4	5
Percent Change from Prior Year	-17%	-13%	0%	-18%	-18%	-63%	-29%	-41%	-56%	300%	200%	100%	80%

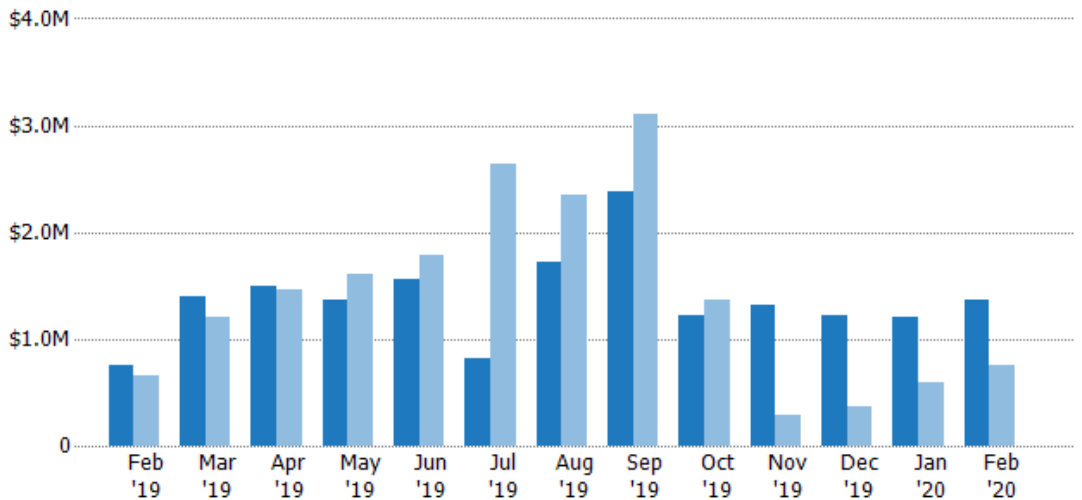
## Pending Sales Volume

The sum of the sales price of residential properties with accepted offers that were available at the end of each month.

### Filters Used

ZIP: Newport, VT 05855  
 Property Type:  
 Condo/Townhouse/Apt, Single  
 Family Residence

Month/ Year	Volume	% Chg.
Feb '20	\$1.36M	80.7%
Feb '19	\$754K	15.4%
Feb '18	\$653K	44.9%



Current Year	\$754K	\$1.4M	\$1.5M	\$1.36M	\$1.56M	\$819K	\$1.72M	\$2.39M	\$1.22M	\$1.32M	\$1.21M	\$1.2M	\$1.36M
Prior Year	\$653K	\$1.21M	\$1.46M	\$1.61M	\$1.78M	\$2.64M	\$2.34M	\$3.11M	\$1.37M	\$282K	\$375K	\$597K	\$754K
Percent Change from Prior Year	15%	16%	3%	-15%	-12%	-69%	-26%	-23%	-11%	368%	223%	102%	81%

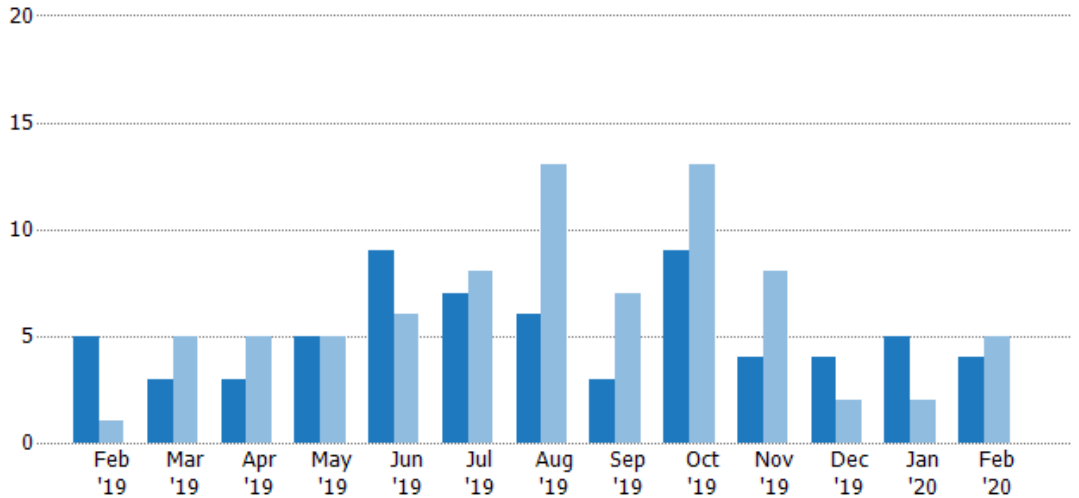
## Closed Sales

The total number of residential properties sold each month.

### Filters Used

ZIP: Newport, VT 05855  
 Property Type:  
 Condo/Townhouse/Apt, Single  
 Family Residence

Month/ Year	Count	% Chg.
Feb '20	4	-20%
Feb '19	5	400%
Feb '18	1	100%



Current Year	5	3	3	5	9	7	6	3	9	4	4	5	4
Prior Year	1	5	5	5	6	8	13	7	13	8	2	2	5
Percent Change from Prior Year	400%	-40%	-40%	0%	50%	-13%	-54%	-57%	-31%	-50%	100%	150%	-20%

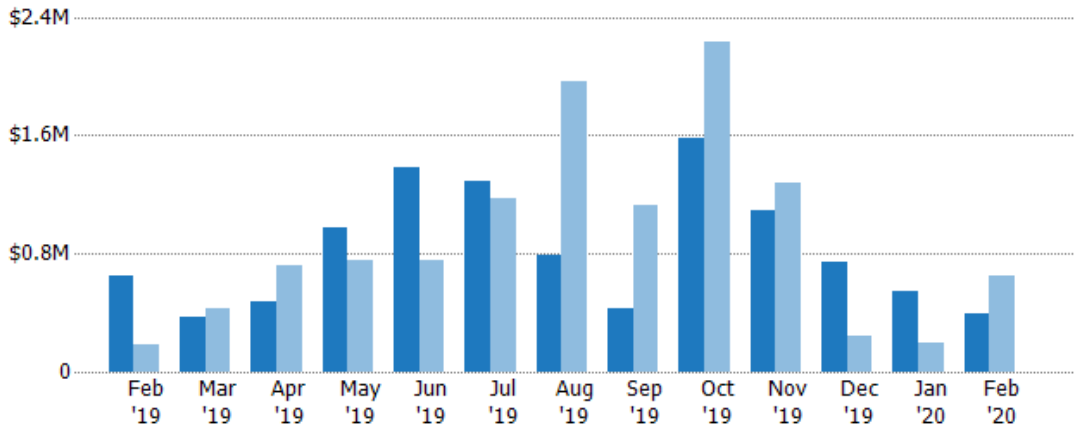
## Closed Sales Volume

The sum of the sales price of residential properties sold each month.

### Filters Used

ZIP: Newport, VT 05855  
 Property Type:  
 Condo/Townhouse/Apt, Single  
 Family Residence

Month/ Year	Volume	% Chg.
Feb '20	\$390K	-39.7%
Feb '19	\$648K	240.8%
Feb '18	\$190K	51.6%



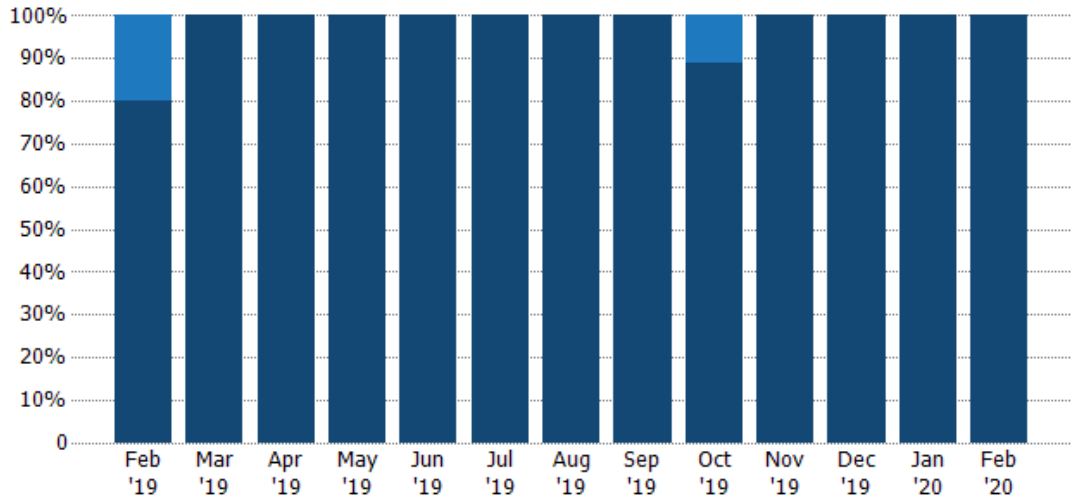
Current Year	\$648K	\$369K	\$476K	\$971K	\$1.38M	\$1.29M	\$794K	\$431K	\$1.57M	\$1.09M	\$745K	\$543K	\$390K
Prior Year	\$190K	\$426K	\$719K	\$755K	\$750K	\$1.17M	\$1.97M	\$1.12M	\$2.23M	\$1.28M	\$240K	\$191K	\$648K
Percent Change from Prior Year	241%	-13%	-34%	29%	84%	10%	-60%	-62%	-30%	-15%	210%	184%	-40%

## Closed Sales by Property Type

The percentage of residential properties sold each month by property type.

**Filters Used**

ZIP: Newport, VT 05855  
 Property Type:  
 Condo/Townhouse/Apt, Single  
 Family Residence



Condo/Townhouse	20%	-	-	-	-	-	-	-	11%	-	-	-	-
Single Family Residence	80%	100%	100%	100%	100%	100%	100%	100%	89%	100%	100%	100%	100%

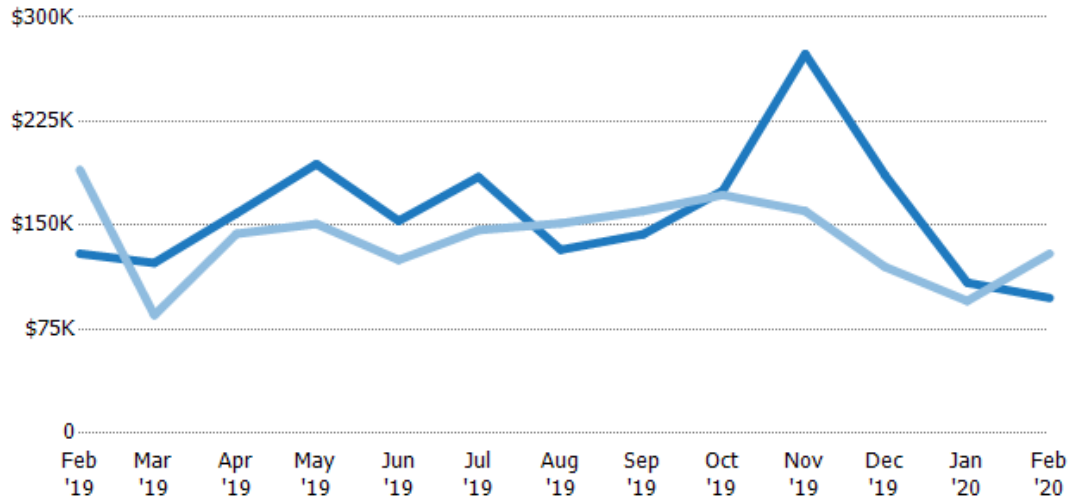
## Average Sales Price

The average sales price of the residential properties sold each month.

**Filters Used**

ZIP: Newport, VT 05855  
 Property Type:  
 Condo/Townhouse/Apt, Single  
 Family Residence

Month/Year	Price	% Chg.
Feb '20	\$97.6K	-24.6%
Feb '19	\$130K	-31.8%
Feb '18	\$190K	-24.2%



Current Year	\$130K	\$123K	\$159K	\$194K	\$153K	\$185K	\$132K	\$144K	\$175K	\$274K	\$186K	\$109K	\$97.6K
Prior Year	\$190K	\$85.2K	\$144K	\$151K	\$125K	\$147K	\$151K	\$160K	\$172K	\$160K	\$120K	\$95.5K	\$130K
Percent Change from Prior Year	-32%	44%	10%	29%	23%	26%	-13%	-10%	2%	71%	55%	14%	-25%

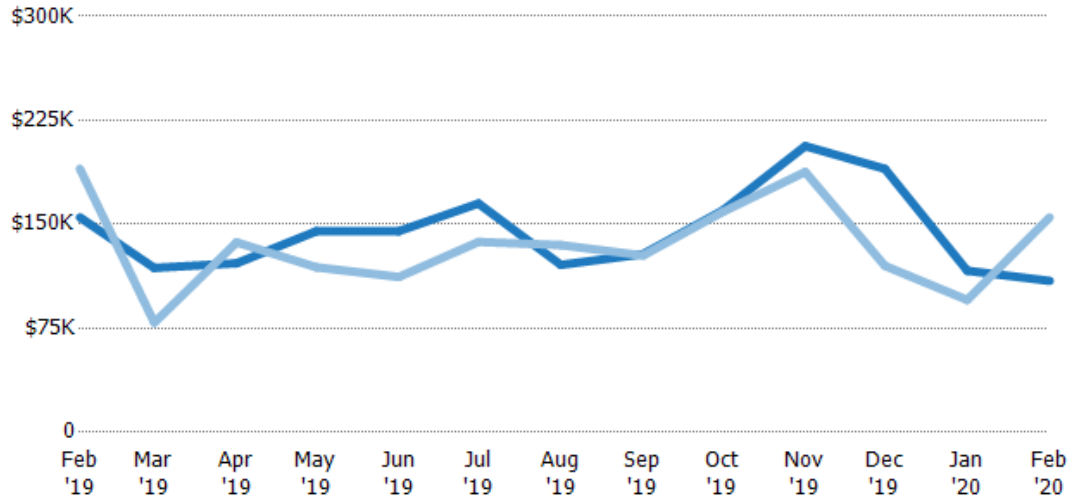
## Median Sales Price

The median sales price of the residential properties sold each month.

### Filters Used

ZIP: Newport, VT 05855  
 Property Type:  
 Condo/Townhouse/Apt, Single  
 Family Residence

Month/Year	Price	% Chg.
Feb '20	\$109K	-29.5%
Feb '19	\$155K	-18.4%
Feb '18	\$190K	-24.2%



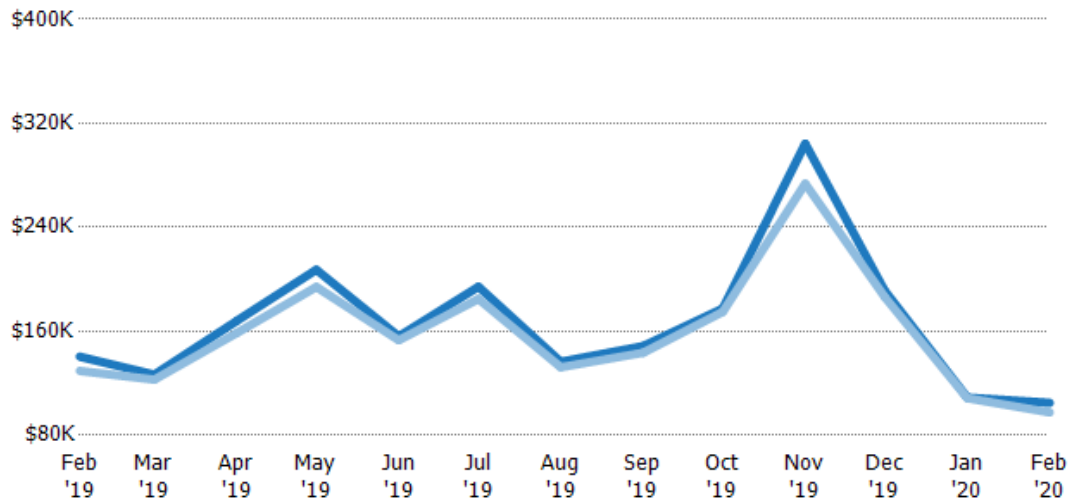
Current Year	\$155K	\$119K	\$122K	\$145K	\$145K	\$165K	\$121K	\$129K	\$160K	\$206K	\$190K	\$117K	\$109K
Prior Year	\$190K	\$79K	\$137K	\$119K	\$112K	\$137K	\$135K	\$128K	\$159K	\$188K	\$120K	\$95.5K	\$155K
Percent Change from Prior Year	-18%	50%	-11%	22%	29%	20%	-11%	1%	1%	10%	58%	22%	-30%

## Average Sales Price vs Average Listing Price

The average sales price as a percentage of the average listing price for properties sold each month.

### Filters Used

ZIP: Newport, VT 05855  
 Property Type:  
 Condo/Townhouse/Apt, Single  
 Family Residence



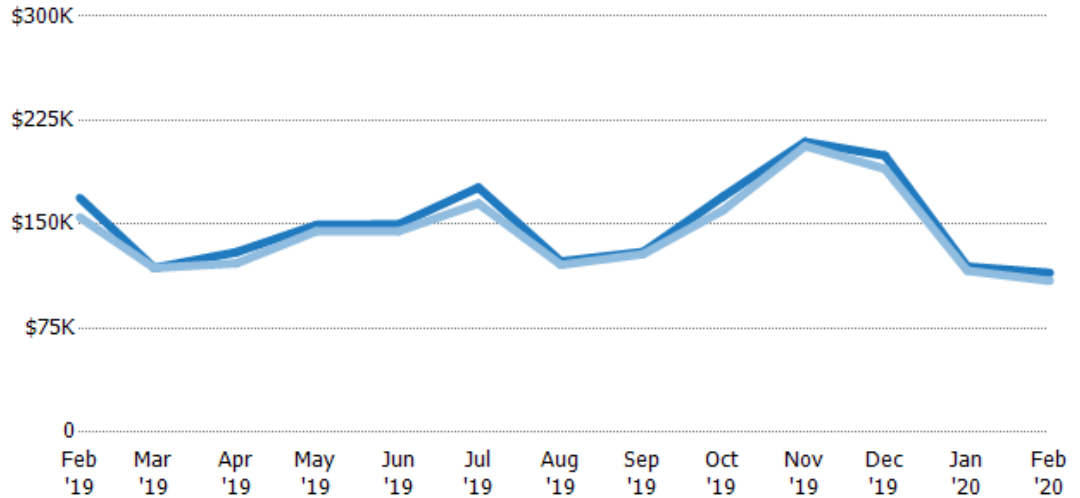
Avg List Price	\$140K	\$127K	\$168K	\$207K	\$156K	\$194K	\$137K	\$149K	\$178K	\$304K	\$191K	\$109K	\$105K
Avg Sales Price	\$130K	\$123K	\$159K	\$194K	\$153K	\$185K	\$132K	\$144K	\$175K	\$274K	\$186K	\$109K	\$97.6K
Avg Sales Price as a % of Avg List Price	92%	97%	94%	94%	98%	95%	97%	97%	99%	90%	98%	100%	93%

## Median Sales Price vs Median Listing Price

The median sales price as a percentage of the median listing price for properties sold each month.

### Filters Used

ZIP: Newport, VT 05855  
 Property Type:  
 Condo/Townhouse/Apt, Single  
 Family Residence



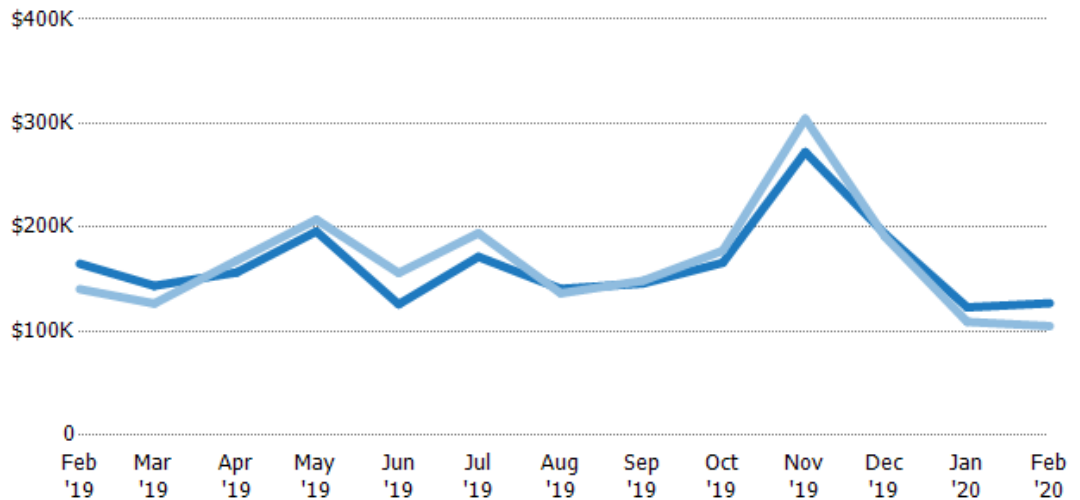
	Feb '19	Mar '19	Apr '19	May '19	Jun '19	Jul '19	Aug '19	Sep '19	Oct '19	Nov '19	Dec '19	Jan '20	Feb '20
Median List Price	\$169K	\$119K	\$130K	\$150K	\$150K	\$177K	\$123K	\$130K	\$170K	\$209K	\$200K	\$120K	\$115K
Median Sales Price	\$155K	\$119K	\$122K	\$145K	\$145K	\$165K	\$121K	\$129K	\$160K	\$206K	\$190K	\$117K	\$109K
Med Sales Price as a % of Med List Price	92%	100%	94%	97%	97%	93%	98%	99%	94%	99%	95%	97%	95%

## Average Sales Price vs Average Est Value

The average sales price as a percentage of the average AVM or RVM® valuation estimate for properties sold each month.

### Filters Used

ZIP: Newport, VT 05855  
 Property Type:  
 Condo/Townhouse/Apt, Single  
 Family Residence



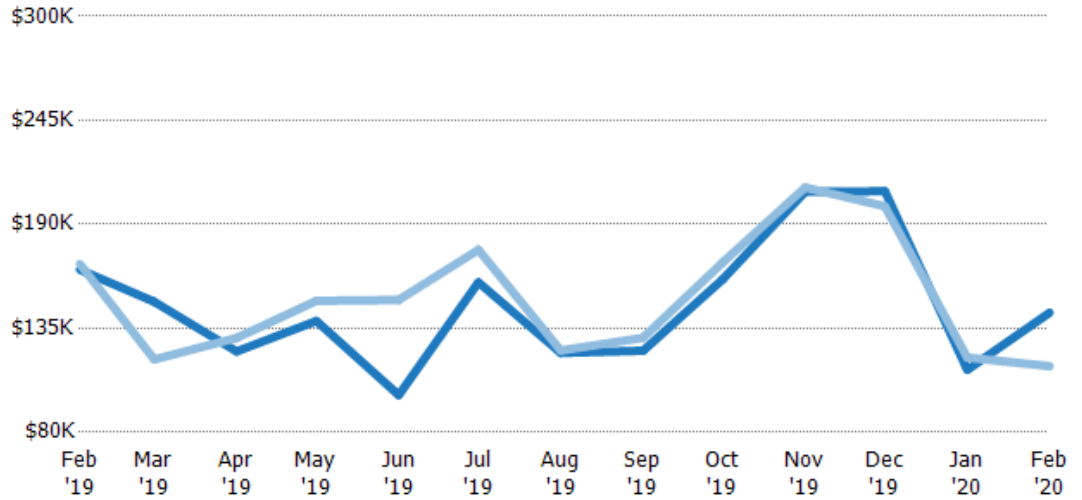
	Feb '19	Mar '19	Apr '19	May '19	Jun '19	Jul '19	Aug '19	Sep '19	Oct '19	Nov '19	Dec '19	Jan '20	Feb '20
Avg Est Value	\$165K	\$144K	\$157K	\$196K	\$126K	\$172K	\$141K	\$146K	\$166K	\$272K	\$194K	\$123K	\$127K
Avg Sales Price	\$140K	\$127K	\$168K	\$207K	\$156K	\$194K	\$137K	\$149K	\$178K	\$304K	\$191K	\$109K	\$105K
Avg Sales Price as a % of Avg Est Value	85%	88%	107%	106%	124%	113%	97%	102%	107%	112%	99%	89%	83%

## Median Sales Price vs Median Est Value

The median sales price as a percent of the median AVM or RVM® valuation estimate for properties sold each month.

**Filters Used**

ZIP: Newport, VT 05855  
 Property Type:  
 Condo/Townhouse/Apt, Single  
 Family Residence



Median Est Value	\$166K	\$149K	\$123K	\$139K	\$100K	\$159K	\$122K	\$123K	\$161K	\$207K	\$207K	\$113K	\$143K
Median Sales Price	\$169K	\$119K	\$130K	\$150K	\$150K	\$177K	\$123K	\$130K	\$170K	\$209K	\$200K	\$120K	\$115K
Med Sales Price as a % of Med Est Value	102%	80%	106%	108%	151%	111%	101%	106%	106%	101%	96%	106%	80%