

## Summary of Key Listing and Sales Metrics

A summary of the key metrics selected to be included in the report. MLS sources where licensed.

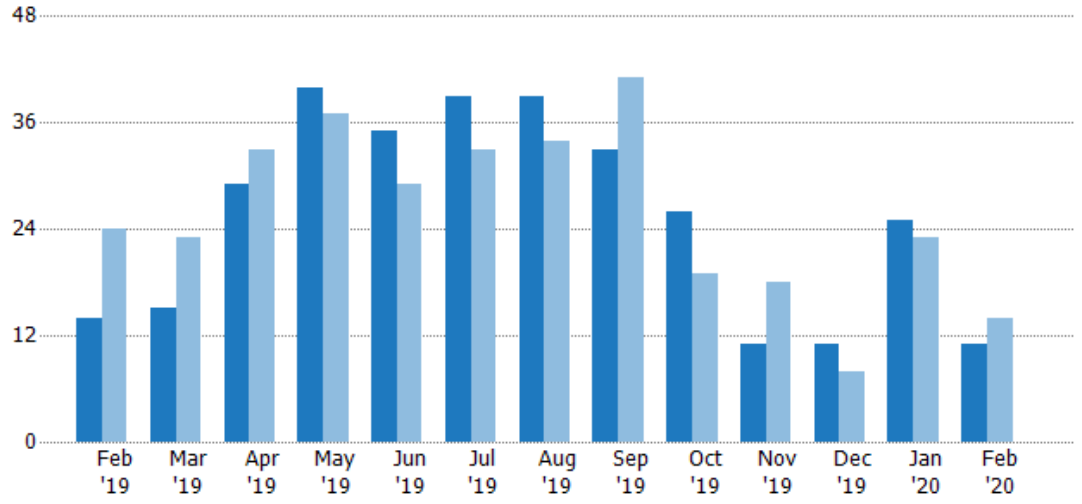
Key Metrics	Feb 2020	Feb 2019	+ / -	YTD 2020	YTD 2019	+ / -
<b>Listing Activity Charts Metrics</b>						
New Listing Count	11	14	-21.4%	36	37	-2.7%
New Listing Volume	\$3,406,200	\$4,346,100	-21.6%	\$11,077,600	\$11,663,890	-5%
Active Listing Count	36	74	-51.4%	N/A	N/A	
Active Listing Volume	\$13,485,439	\$26,854,706	-49.8%	N/A	N/A	
Average Listing Price	\$374,596	\$362,901	+3.2%	\$370,693	\$361,658	+2.5%
Median Listing Price	\$376,500	\$352,350	+6.9%	\$370,241	\$352,350	+5.1%
Median Days in RPR	108.5	150	-27.7%	111.01	133.69	-17%
Months of Inventory	1.9	4.6	-59%	3	4.8	-37.2%
Absorption Rate	52.78%	21.62%	+31.2%	32.91%	20.67%	+12.2%
<b>Sales Activity Charts Metrics</b>						
New Pending Sales Count	17	16	+6.3%	39	26	+50%
New Pending Sales Volume	\$4,760,100	\$4,867,450	-2.2%	\$10,789,849	\$8,355,350	+29.1%
Pending Sales Count	30	27	+11.1%	N/A	N/A	
Pending Sales Volume	\$9,877,725	\$9,684,500	+2%	N/A	N/A	
Closed Sales Count	15	10	+50%	34	26	+30.8%
Closed Sales Volume	\$4,102,600	\$3,793,628	+8.1%	\$10,094,247	\$8,733,886	+15.6%
Average Sales Price	\$273,507	\$379,363	-27.9%	\$296,890	\$335,919	-11.6%
Median Sales Price	\$211,500	\$313,450	-32.5%	\$274,368	\$300,865	-8.8%

## New Listings

The number of new residential listings that were added each month.

### Filters Used

ZIP: Essex, VT 05451, Essex Junction, VT 05452, Essex Junction, VT 05453  
 Property Type: Condo/Townhouse/Apt, Single Family Residence



Month/Year	Count	% Chg.
Feb '20	11	-21.4%
Feb '19	14	-41.7%
Feb '18	24	-12.5%

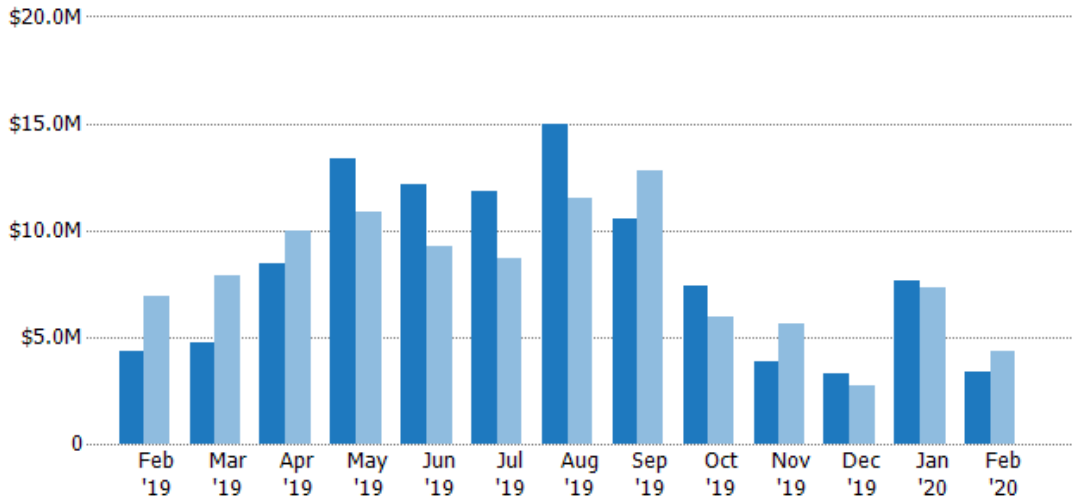
Current Year	14	15	29	40	35	39	39	33	26	11	11	25	11
Prior Year	24	23	33	37	29	33	34	41	19	18	8	23	14
Percent Change from Prior Year	-42%	-35%	-12%	8%	21%	18%	15%	-20%	37%	-39%	38%	9%	-21%

## New Listing Volume

The sum of the listing price of residential listings that were added each month.

### Filters Used

ZIP: Essex, VT 05451, Essex Junction, VT 05452, Essex Junction, VT 05453  
 Property Type: Condo/Townhouse/Apt, Single Family Residence



Month/Year	Volume	% Chg.
Feb '20	\$3.41M	-21.6%
Feb '19	\$4.35M	-37.2%
Feb '18	\$6.92M	7.8%

Current Year	\$4.35M	\$4.72M	\$8.42M	\$13.4M	\$12.2M	\$11.8M	\$15M	\$10.6M	\$7.36M	\$3.85M	\$3.3M	\$7.67M	\$3.41M
Prior Year	\$6.92M	\$7.88M	\$10M	\$10.8M	\$9.23M	\$8.69M	\$11.5M	\$12.8M	\$5.96M	\$5.6M	\$2.7M	\$7.32M	\$4.35M
Percent Change from Prior Year	-37%	-40%	-16%	24%	32%	36%	30%	-17%	23%	-31%	22%	5%	-22%

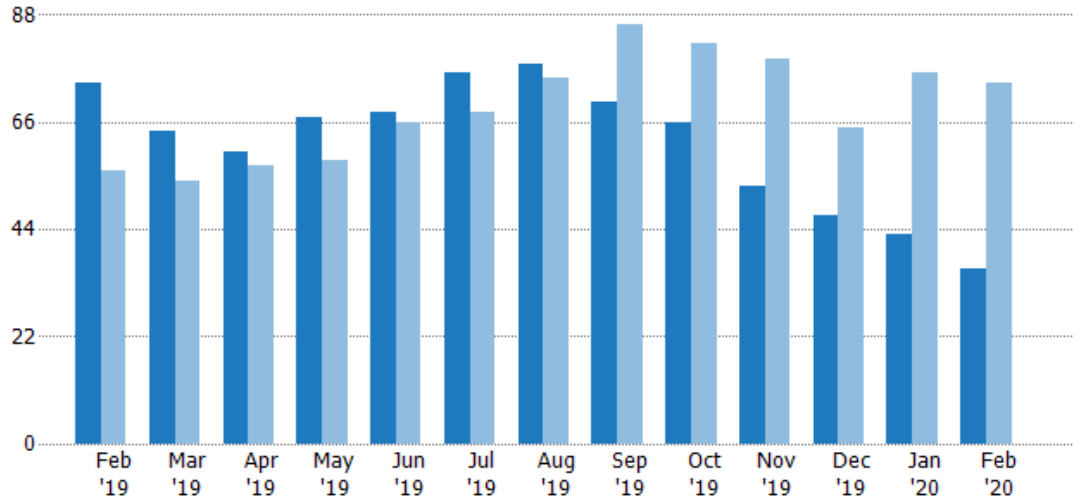
## Active Listings

The number of active residential listings at the end of each month.

### Filters Used

ZIP: Essex, VT 05451, Essex Junction, VT 05452, Essex Junction, VT 05453  
 Property Type: Condo/Townhouse/Apt, Single Family Residence

Month/Year	Count	% Chg.
Feb '20	36	-51.4%
Feb '19	74	32.1%
Feb '18	56	17.9%



Current Year	74	64	60	67	68	76	78	70	66	53	47	43	36
Prior Year	56	54	57	58	66	68	75	86	82	79	65	76	74
Percent Change from Prior Year	32%	19%	5%	16%	3%	12%	4%	-19%	-20%	-33%	-28%	-43%	-51%

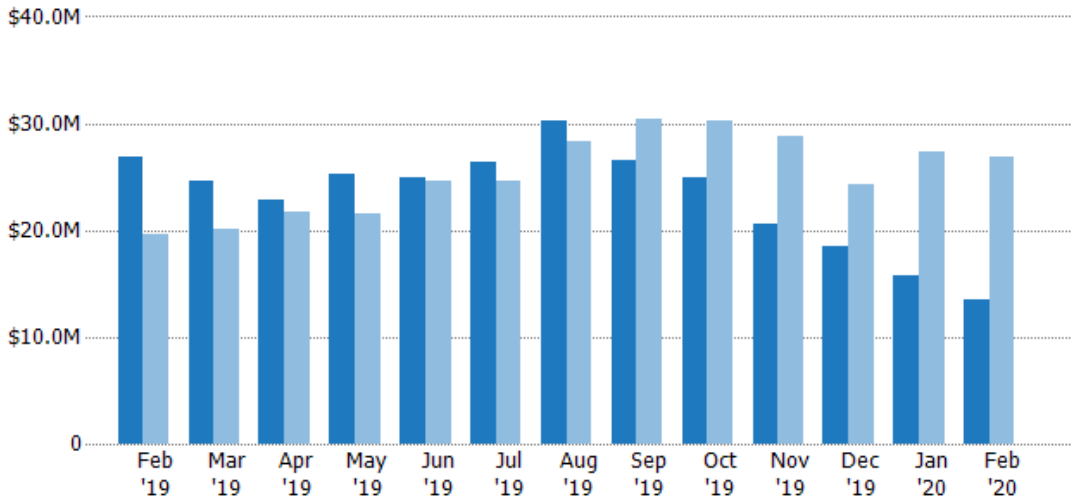
## Active Listing Volume

The sum of the listing price of active residential listings at the end of each month.

### Filters Used

ZIP: Essex, VT 05451, Essex Junction, VT 05452, Essex Junction, VT 05453  
 Property Type: Condo/Townhouse/Apt, Single Family Residence

Month/Year	Volume	% Chg.
Feb '20	\$13.5M	-49.8%
Feb '19	\$26.9M	36.6%
Feb '18	\$19.7M	16.7%



Current Year	\$26.9M	\$24.6M	\$22.8M	\$25.2M	\$24.9M	\$26.4M	\$30.3M	\$26.5M	\$24.9M	\$20.5M	\$18.5M	\$15.8M	\$13.5M
Prior Year	\$19.7M	\$20.2M	\$21.7M	\$21.6M	\$24.6M	\$24.6M	\$28.3M	\$30.4M	\$30.2M	\$28.8M	\$24.2M	\$27.4M	\$26.9M
Percent Change from Prior Year	37%	22%	5%	16%	1%	7%	7%	-13%	-18%	-29%	-24%	-42%	-50%

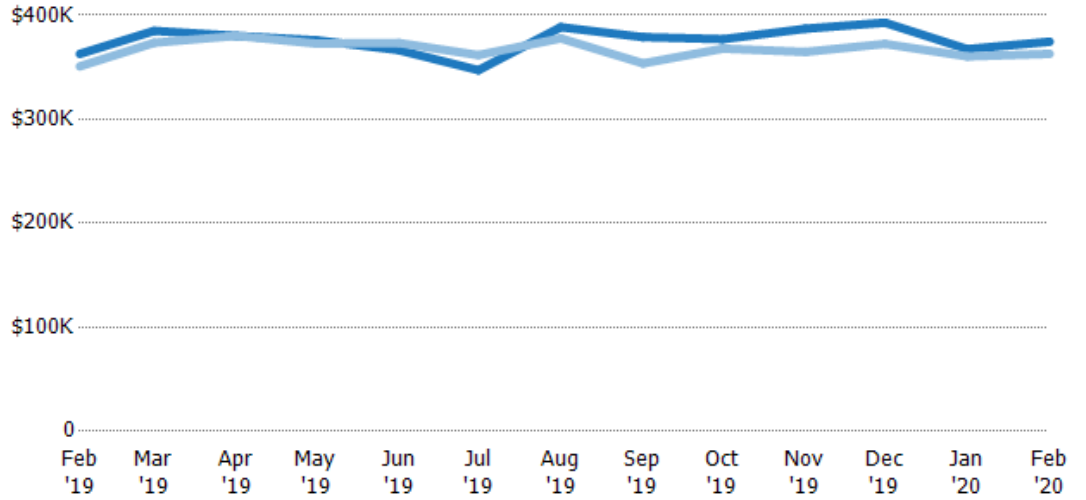
## Average Listing Price

The average listing price of active residential listings at the end of each month.

### Filters Used

ZIP: Essex, VT 05451, Essex Junction, VT 05452, Essex Junction, VT 05453  
 Property Type: Condo/Townhouse/Apt, Single Family Residence

Month/Year	Price	% Chg.
Feb '20	\$375K	3.2%
Feb '19	\$363K	3.4%
Feb '18	\$351K	-1%



Current Year	\$363K	\$385K	\$380K	\$376K	\$367K	\$347K	\$389K	\$379K	\$377K	\$387K	\$393K	\$367K	\$375K
Prior Year	\$351K	\$374K	\$380K	\$373K	\$373K	\$362K	\$378K	\$354K	\$368K	\$365K	\$372K	\$360K	\$363K
Percent Change from Prior Year	3%	3%	0	1%	-2%	-4%	3%	7%	2%	6%	5%	2%	3%

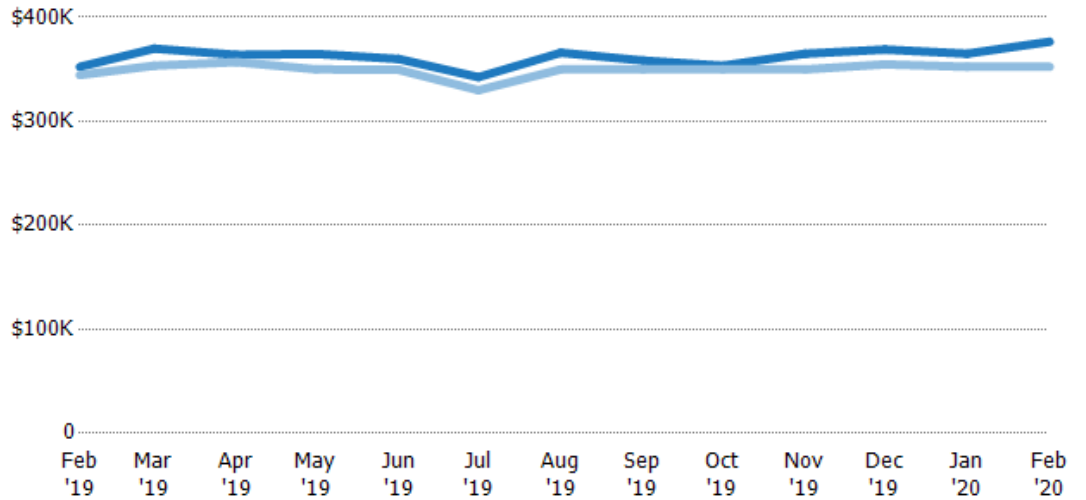
## Median Listing Price

The median listing price of active residential listings at the end of each month.

### Filters Used

ZIP: Essex, VT 05451, Essex Junction, VT 05452, Essex Junction, VT 05453  
 Property Type: Condo/Townhouse/Apt, Single Family Residence

Month/Year	Price	% Chg.
Feb '20	\$377K	6.9%
Feb '19	\$352K	2.3%
Feb '18	\$345K	0.1%



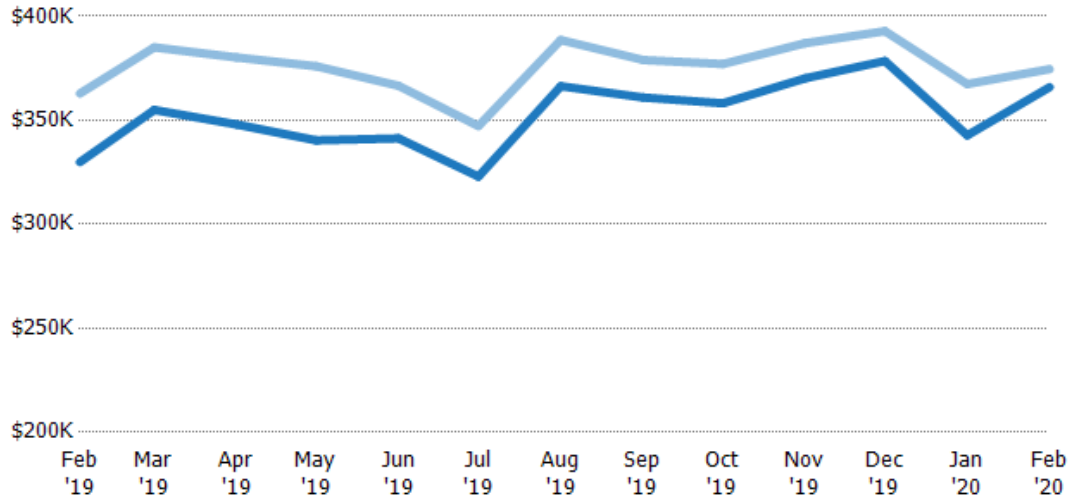
Current Year	\$352K	\$370K	\$364K	\$365K	\$360K	\$342K	\$366K	\$358K	\$353K	\$365K	\$369K	\$365K	\$377K
Prior Year	\$345K	\$353K	\$357K	\$350K	\$349K	\$330K	\$350K	\$350K	\$350K	\$350K	\$355K	\$352K	\$352K
Percent Change from Prior Year	2%	5%	2%	4%	3%	4%	5%	2%	1%	4%	4%	4%	7%

## Average Listing Price vs Average Est Value

The average listing price as a percentage of the average AVM or RVM® valuation estimate for active listings each month.

### Filters Used

ZIP: Essex, VT 05451, Essex Junction, VT 05452, Essex Junction, VT 05453  
 Property Type: Condo/Townhouse/Apt, Single Family Residence



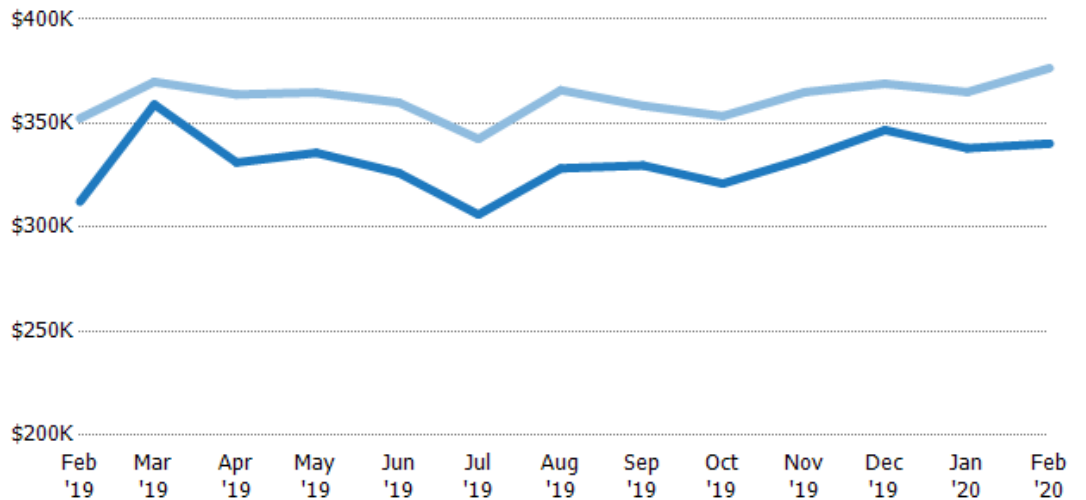
	Feb '19	Mar '19	Apr '19	May '19	Jun '19	Jul '19	Aug '19	Sep '19	Oct '19	Nov '19	Dec '19	Jan '20	Feb '20
Avg Est Value	\$330K	\$355K	\$348K	\$340K	\$341K	\$323K	\$366K	\$361K	\$358K	\$370K	\$378K	\$343K	\$366K
Avg Listing Price	\$363K	\$385K	\$380K	\$376K	\$367K	\$347K	\$389K	\$379K	\$377K	\$387K	\$393K	\$367K	\$375K
Avg Listing Price as a % of Avg Est Value	110%	108%	109%	110%	107%	108%	106%	105%	105%	105%	104%	107%	102%

## Median Listing Price vs Median Est Value

The median listing price as a percentage of the median AVM or RVM® valuation estimate for active listings each month.

### Filters Used

ZIP: Essex, VT 05451, Essex Junction, VT 05452, Essex Junction, VT 05453  
 Property Type: Condo/Townhouse/Apt, Single Family Residence



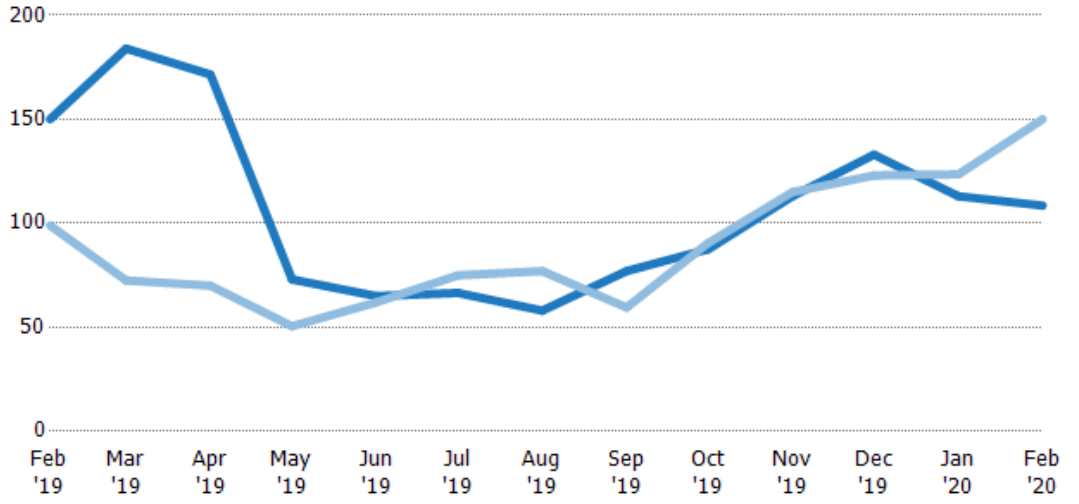
	Feb '19	Mar '19	Apr '19	May '19	Jun '19	Jul '19	Aug '19	Sep '19	Oct '19	Nov '19	Dec '19	Jan '20	Feb '20
Median Est Value	\$312K	\$359K	\$331K	\$336K	\$326K	\$306K	\$328K	\$330K	\$321K	\$333K	\$347K	\$338K	\$340K
Median Listing Price	\$352K	\$370K	\$364K	\$365K	\$360K	\$342K	\$366K	\$358K	\$353K	\$365K	\$369K	\$365K	\$377K
Med Listing Price as a % of Med Est Value	113%	103%	110%	109%	110%	112%	111%	109%	110%	110%	106%	108%	111%

## Median Days in RPR

The median number of days between when residential properties are first displayed as active listings in RPR and when accepted offers have been noted in RPR.

### Filters Used

ZIP: Essex, VT 05451, Essex Junction, VT 05452, Essex Junction, VT 05453  
 Property Type: Condo/Townhouse/Apt, Single Family Residence



Month/Year	Days	% Chg.
Feb '20	109	-27.7%
Feb '19	150	51.5%
Feb '18	99	37.4%

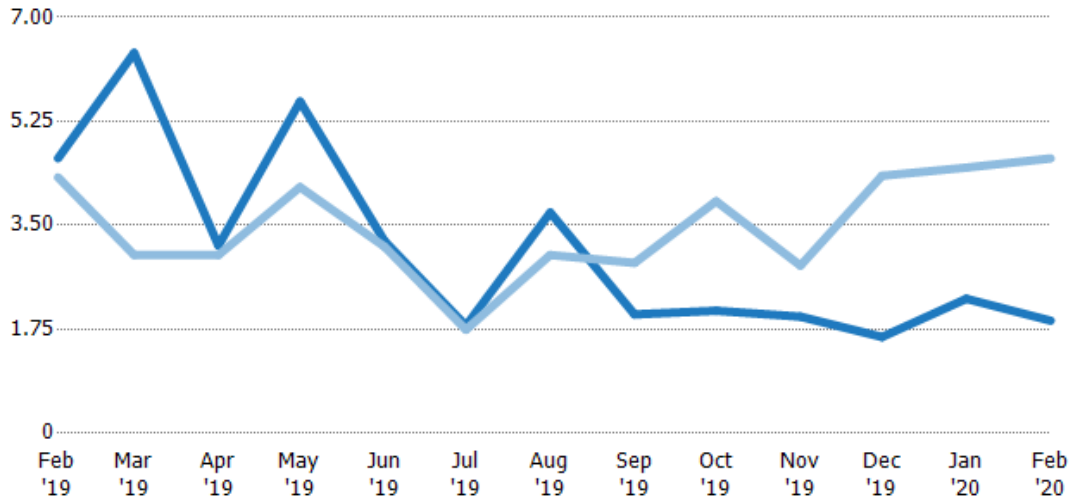
	Feb '19	Mar '19	Apr '19	May '19	Jun '19	Jul '19	Aug '19	Sep '19	Oct '19	Nov '19	Dec '19	Jan '20	Feb '20
Current Year	150	184	172	73	65	66.5	58	77	87.5	113	133	113	109
Prior Year	99	72.5	70	50.5	62	75	77	59.5	90.5	115	123	124	150
Percent Change from Prior Year	52%	154%	145%	45%	5%	-11%	-25%	29%	-3%	-2%	8%	-9%	-28%

## Months of Inventory

The number of months it would take to exhaust active listings at the current sales rate.

### Filters Used

ZIP: Essex, VT 05451, Essex Junction, VT 05452, Essex Junction, VT 05453  
 Property Type: Condo/Townhouse/Apt, Single Family Residence



Month/Year	Months	% Chg.
Feb '20	1.89	-59%
Feb '19	4.63	7.4%
Feb '18	4.31	-9.9%

	Feb '19	Mar '19	Apr '19	May '19	Jun '19	Jul '19	Aug '19	Sep '19	Oct '19	Nov '19	Dec '19	Jan '20	Feb '20
Current Year	4.63	6.4	3.16	5.58	3.24	1.81	3.71	2	2.06	1.96	1.62	2.26	1.89
Prior Year	4.31	3	3	4.14	3.14	1.74	3	2.87	3.9	2.82	4.33	4.47	4.63
Percent Change from Prior Year	7%	113%	5%	35%	3%	4%	24%	-30%	-47%	-30%	-63%	-49%	-59%

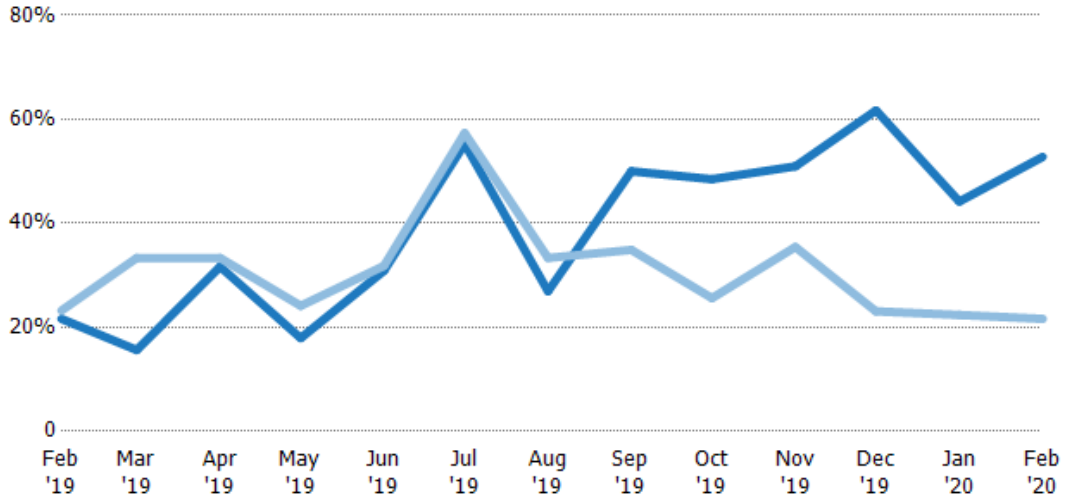
## Absorption Rate

The percentage of inventory sold per month.

### Filters Used

ZIP: Essex, VT 05451, Essex Junction, VT 05452, Essex Junction, VT 05453

Property Type:  
Condo/Townhouse/Apt, Single Family Residence



Month/Year	Rate	Chg.
Feb '20	53%	-31.2%
Feb '19	22%	1.6%
Feb '18	23%	10.9%

	Feb '19	Mar '19	Apr '19	May '19	Jun '19	Jul '19	Aug '19	Sep '19	Oct '19	Nov '19	Dec '19	Jan '20	Feb '20
Current Year	22%	16%	32%	18%	31%	55%	27%	50%	48%	51%	62%	44%	53%
Prior Year	23%	33%	33%	24%	32%	57%	33%	35%	26%	35%	23%	22%	22%
Change from Prior Year	2%	18%	2%	6%	1%	2%	6%	-15%	-23%	-16%	-39%	-22%	-31%

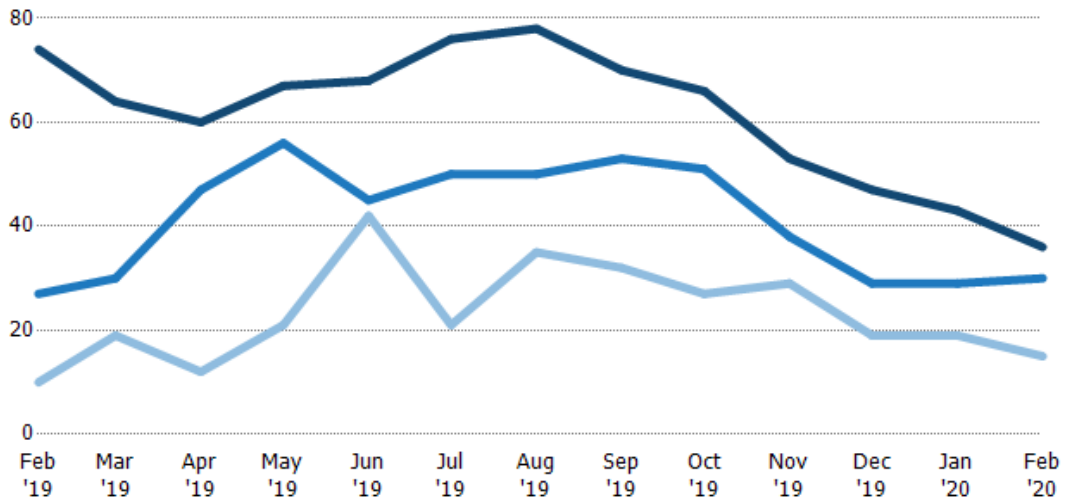
## Active/Pending/Sold Units

The number of residential properties that were Active, Pending and Sold each month.

### Filters Used

ZIP: Essex, VT 05451, Essex Junction, VT 05452, Essex Junction, VT 05453

Property Type:  
Condo/Townhouse/Apt, Single Family Residence



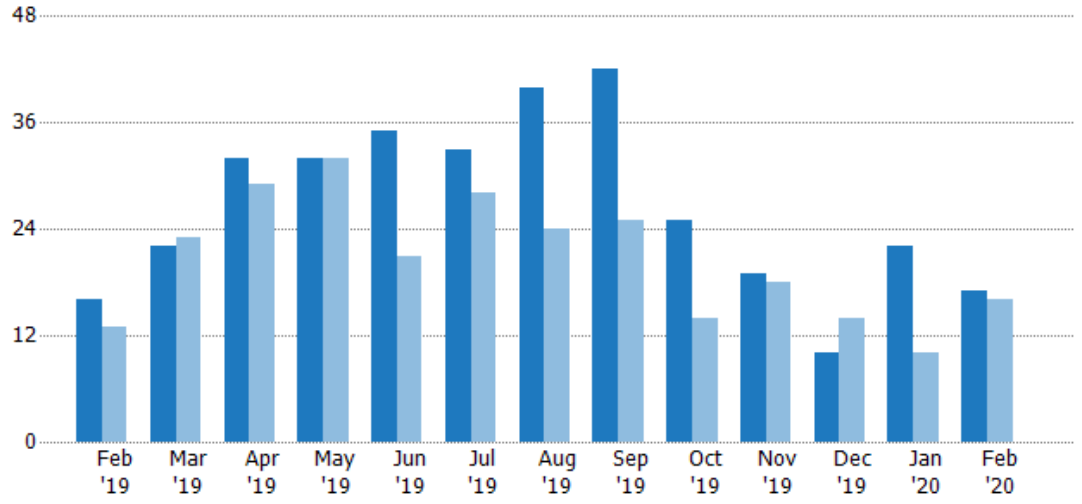
	Feb '19	Mar '19	Apr '19	May '19	Jun '19	Jul '19	Aug '19	Sep '19	Oct '19	Nov '19	Dec '19	Jan '20	Feb '20
Active	74	64	60	67	68	76	78	70	66	53	47	43	36
Pending	27	30	47	56	45	50	50	53	51	38	29	29	30
Sold	10	19	12	21	42	21	35	32	27	29	19	19	15

## New Pending Sales

The number of residential properties with accepted offers that were added each month.

### Filters Used

ZIP: Essex, VT 05451, Essex Junction, VT 05452, Essex Junction, VT 05453  
 Property Type: Condo/Townhouse/Apt, Single Family Residence



Month/Year	Count	% Chg.
Feb '20	17	6.3%
Feb '19	16	23.1%
Feb '18	13	-7.7%

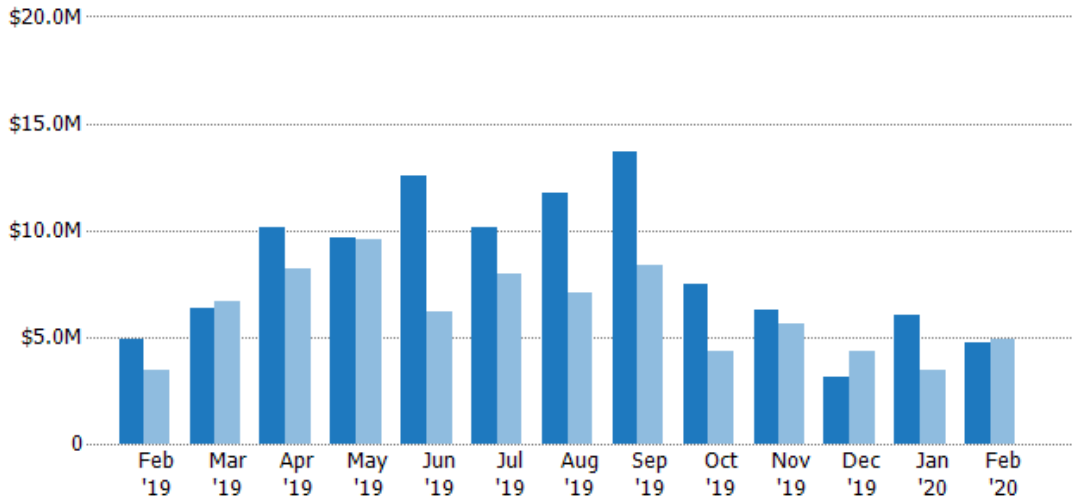
	Feb '19	Mar '19	Apr '19	May '19	Jun '19	Jul '19	Aug '19	Sep '19	Oct '19	Nov '19	Dec '19	Jan '20	Feb '20
Current Year	16	22	32	32	35	33	40	42	25	19	10	22	17
Prior Year	13	23	29	32	21	28	24	25	14	18	14	10	16
Percent Change from Prior Year	23%	-4%	10%	0%	67%	18%	67%	68%	79%	6%	-29%	120%	6%

## New Pending Sales Volume

The sum of the sales price of residential properties with accepted offers that were added each month.

### Filters Used

ZIP: Essex, VT 05451, Essex Junction, VT 05452, Essex Junction, VT 05453  
 Property Type: Condo/Townhouse/Apt, Single Family Residence



Month/Year	Volume	% Chg.
Feb '20	\$4.76M	-2.2%
Feb '19	\$4.87M	41.7%
Feb '18	\$3.44M	-16.8%

	Feb '19	Mar '19	Apr '19	May '19	Jun '19	Jul '19	Aug '19	Sep '19	Oct '19	Nov '19	Dec '19	Jan '20	Feb '20
Current Year	\$4.87M	\$6.32M	\$10.1M	\$9.65M	\$12.5M	\$10.2M	\$11.7M	\$13.7M	\$7.48M	\$6.3M	\$3.09M	\$6.03M	\$4.76M
Prior Year	\$3.44M	\$6.68M	\$8.18M	\$9.55M	\$6.2M	\$7.98M	\$7.1M	\$8.35M	\$4.37M	\$5.59M	\$4.34M	\$3.49M	\$4.87M
Percent Change from Prior Year	42%	-5%	24%	1%	102%	27%	65%	64%	71%	13%	-29%	73%	-2%



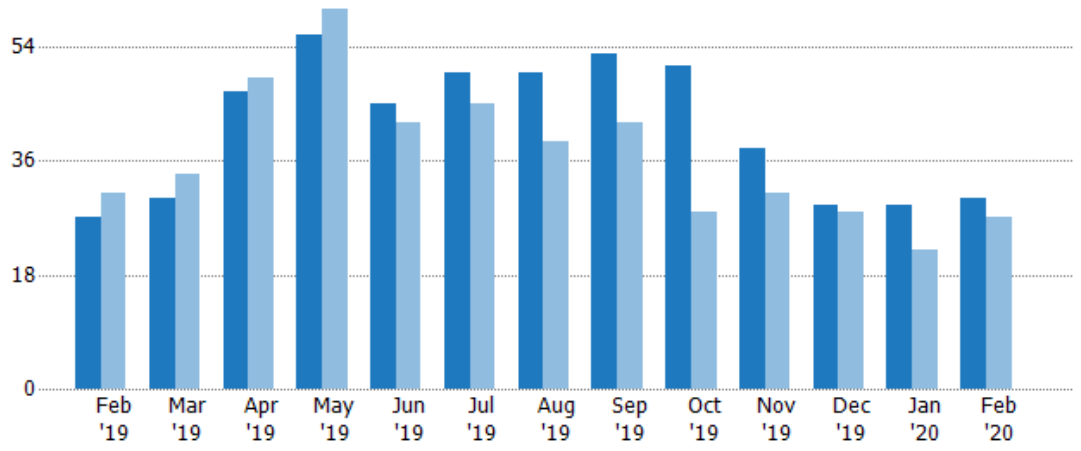
## Pending Sales

The number of residential properties with accepted offers that were available at the end each month.

### Filters Used

ZIP: Essex, VT 05451, Essex Junction, VT 05452, Essex Junction, VT 05453  
 Property Type: Condo/Townhouse/Apt, Single Family Residence

Month/Year	Count	% Chg.
Feb '20	30	11.1%
Feb '19	27	-12.9%
Feb '18	31	9.7%



Current Year	27	30	47	56	45	50	50	53	51	38	29	29	30
Prior Year	31	34	49	60	42	45	39	42	28	31	28	22	27
Percent Change from Prior Year	-13%	-12%	-4%	-7%	7%	11%	28%	26%	82%	23%	4%	32%	11%

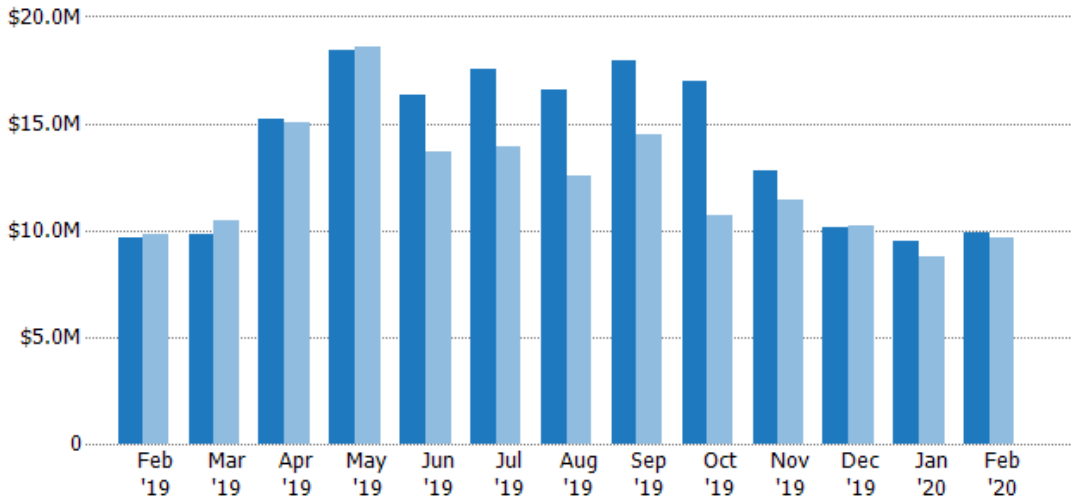
## Pending Sales Volume

The sum of the sales price of residential properties with accepted offers that were available at the end of each month.

### Filters Used

ZIP: Essex, VT 05451, Essex Junction, VT 05452, Essex Junction, VT 05453  
 Property Type: Condo/Townhouse/Apt, Single Family Residence

Month/Year	Volume	% Chg.
Feb '20	\$9.88M	2%
Feb '19	\$9.68M	-1.4%
Feb '18	\$9.82M	2.7%



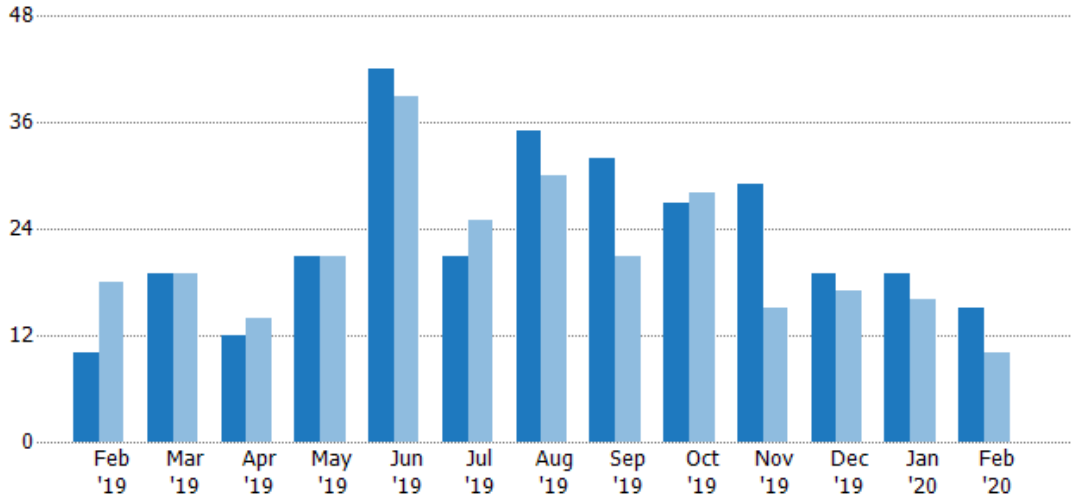
Current Year	\$9.68M	\$9.83M	\$15.2M	\$18.4M	\$16.3M	\$17.5M	\$16.6M	\$17.9M	\$17M	\$12.8M	\$10.1M	\$9.48M	\$9.88M
Prior Year	\$9.82M	\$10.5M	\$15M	\$18.6M	\$13.7M	\$13.9M	\$12.5M	\$14.5M	\$10.7M	\$11.4M	\$10.2M	\$8.79M	\$9.68M
Percent Change from Prior Year	-1%	-6%	1%	-1%	20%	26%	32%	24%	59%	12%	-1%	8%	2%

## Closed Sales

The total number of residential properties sold each month.

### Filters Used

ZIP: Essex, VT 05451, Essex Junction, VT 05452, Essex Junction, VT 05453  
 Property Type: Condo/Townhouse/Apt, Single Family Residence



Month/Year	Count	% Chg.
Feb '20	15	50%
Feb '19	10	-44.4%
Feb '18	18	-66.7%

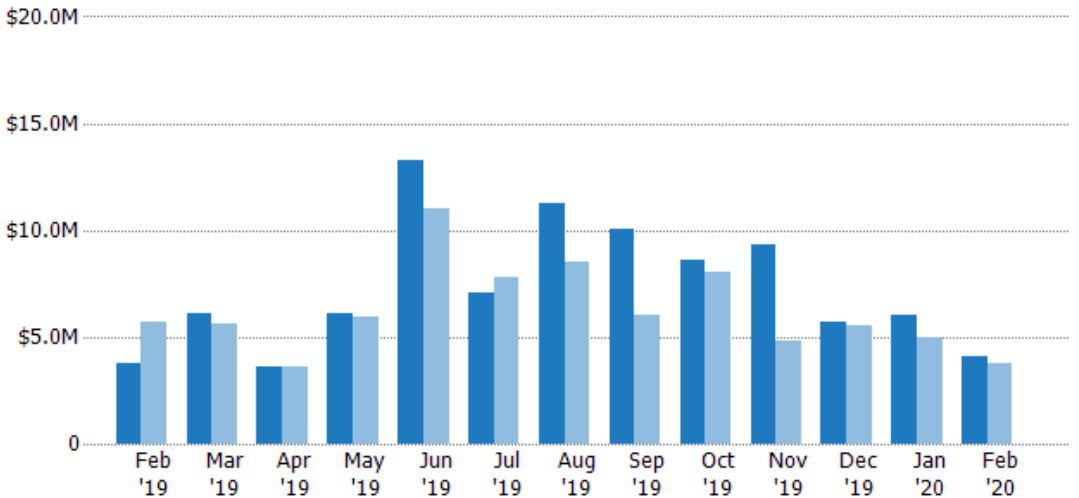
	Feb '19	Mar '19	Apr '19	May '19	Jun '19	Jul '19	Aug '19	Sep '19	Oct '19	Nov '19	Dec '19	Jan '20	Feb '20
Current Year	10	19	12	21	42	21	35	32	27	29	19	19	15
Prior Year	18	19	14	21	39	25	30	21	28	15	17	16	10
Percent Change from Prior Year	-44%	0%	-14%	0%	8%	-16%	17%	52%	-4%	93%	12%	19%	50%

## Closed Sales Volume

The sum of the sales price of residential properties sold each month.

### Filters Used

ZIP: Essex, VT 05451, Essex Junction, VT 05452, Essex Junction, VT 05453  
 Property Type: Condo/Townhouse/Apt, Single Family Residence



Month/Year	Volume	% Chg.
Feb '20	\$4.1M	8.1%
Feb '19	\$3.79M	-33.4%
Feb '18	\$5.7M	-73.4%

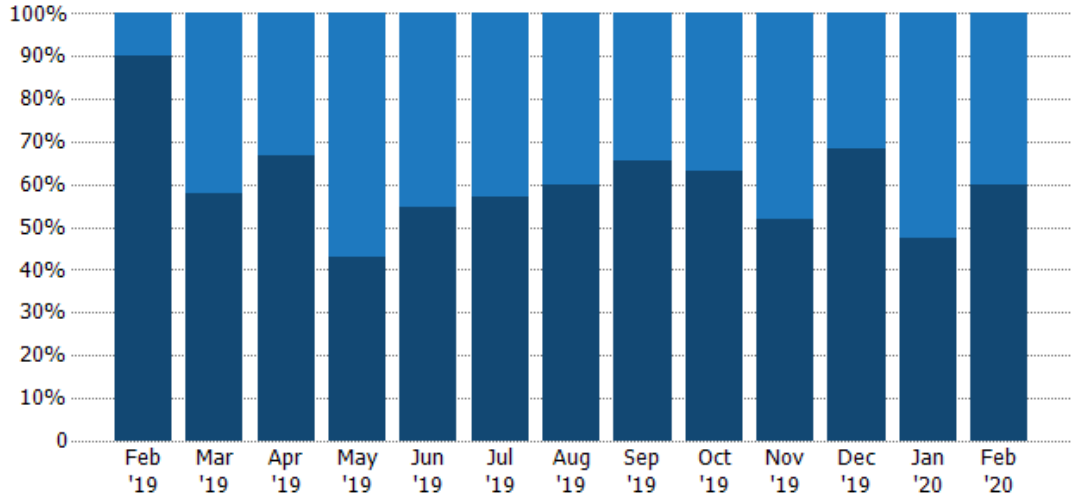
	Feb '19	Mar '19	Apr '19	May '19	Jun '19	Jul '19	Aug '19	Sep '19	Oct '19	Nov '19	Dec '19	Jan '20	Feb '20
Current Year	\$3.79M	\$6.14M	\$3.61M	\$6.1M	\$13.3M	\$7.04M	\$11.3M	\$10.1M	\$8.63M	\$9.34M	\$5.68M	\$5.99M	\$4.1M
Prior Year	\$5.7M	\$5.59M	\$3.63M	\$5.92M	\$11M	\$7.76M	\$8.5M	\$6.02M	\$8.06M	\$4.81M	\$5.52M	\$4.94M	\$3.79M
Percent Change from Prior Year	-33%	10%	-1%	3%	20%	-9%	32%	67%	7%	94%	3%	21%	8%

## Closed Sales by Property Type

The percentage of residential properties sold each month by property type.

### Filters Used

ZIP: Essex, VT 05451, Essex Junction, VT 05452, Essex Junction, VT 05453  
 Property Type: Condo/Townhouse/Apt, Single Family Residence



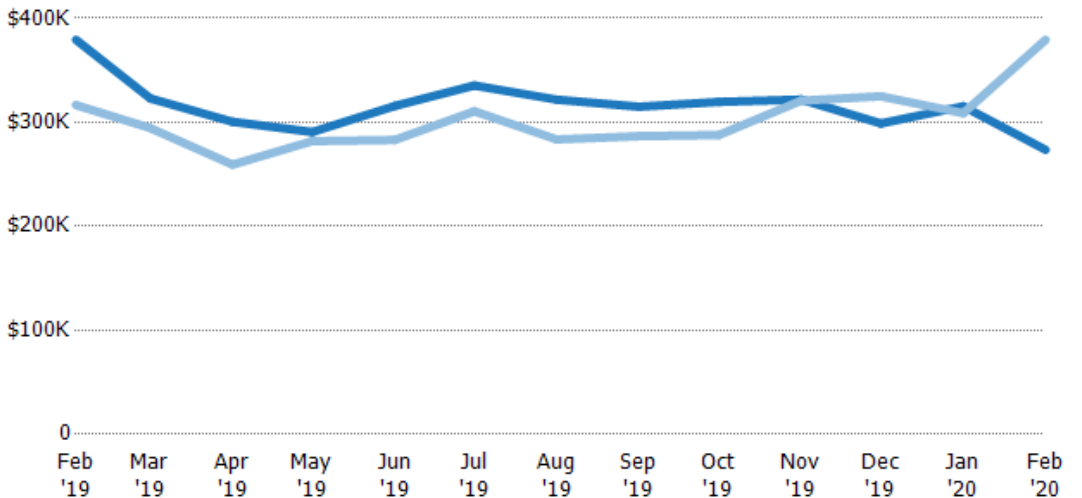
Condo/Townhouse	10%	42%	33%	57%	45%	43%	40%	34%	37%	48%	32%	53%	40%
Single Family Residence	90%	58%	67%	43%	55%	57%	60%	66%	63%	52%	68%	47%	60%

## Average Sales Price

The average sales price of the residential properties sold each month.

### Filters Used

ZIP: Essex, VT 05451, Essex Junction, VT 05452, Essex Junction, VT 05453  
 Property Type: Condo/Townhouse/Apt, Single Family Residence



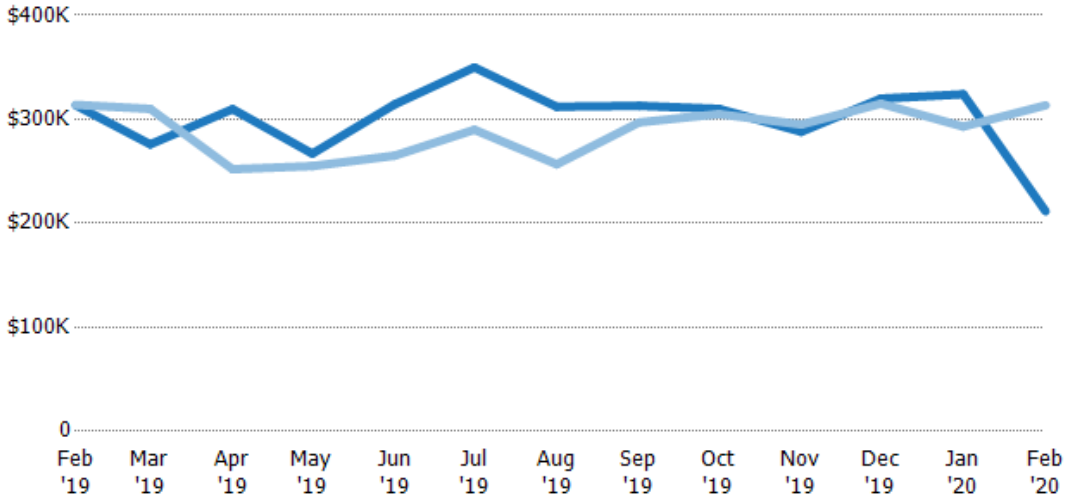
Current Year	\$379K	\$323K	\$300K	\$291K	\$316K	\$335K	\$322K	\$315K	\$320K	\$322K	\$299K	\$315K	\$274K
Prior Year	\$317K	\$294K	\$259K	\$282K	\$283K	\$311K	\$283K	\$287K	\$288K	\$321K	\$325K	\$309K	\$379K
Percent Change from Prior Year	20%	10%	16%	3%	12%	8%	14%	10%	11%	0%	-8%	2%	-28%

## Median Sales Price

The median sales price of the residential properties sold each month.

### Filters Used

ZIP: Essex, VT 05451, Essex Junction, VT 05452, Essex Junction, VT 05453  
 Property Type: Condo/Townhouse/Apt, Single Family Residence



Month/Year	Price	% Chg.
Feb '20	\$212K	-32.5%
Feb '19	\$313K	-0.2%
Feb '18	\$314K	-29.4%

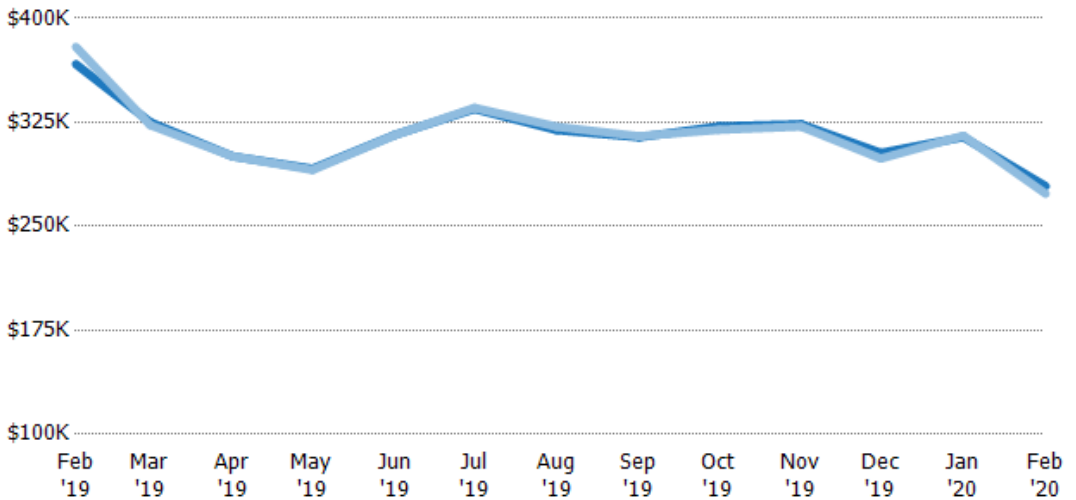
	Feb '19	Mar '19	Apr '19	May '19	Jun '19	Jul '19	Aug '19	Sep '19	Oct '19	Nov '19	Dec '19	Jan '20	Feb '20
Current Year	\$313K	\$276K	\$310K	\$267K	\$314K	\$350K	\$312K	\$313K	\$310K	\$288K	\$320K	\$324K	\$212K
Prior Year	\$314K	\$310K	\$252K	\$255K	\$265K	\$290K	\$257K	\$297K	\$305K	\$295K	\$315K	\$293K	\$313K
Percent Change from Prior Year	0%	-11%	23%	5%	19%	21%	22%	5%	2%	-2%	2%	11%	-33%

## Average Sales Price vs Average Listing Price

The average sales price as a percentage of the average listing price for properties sold each month.

### Filters Used

ZIP: Essex, VT 05451, Essex Junction, VT 05452, Essex Junction, VT 05453  
 Property Type: Condo/Townhouse/Apt, Single Family Residence



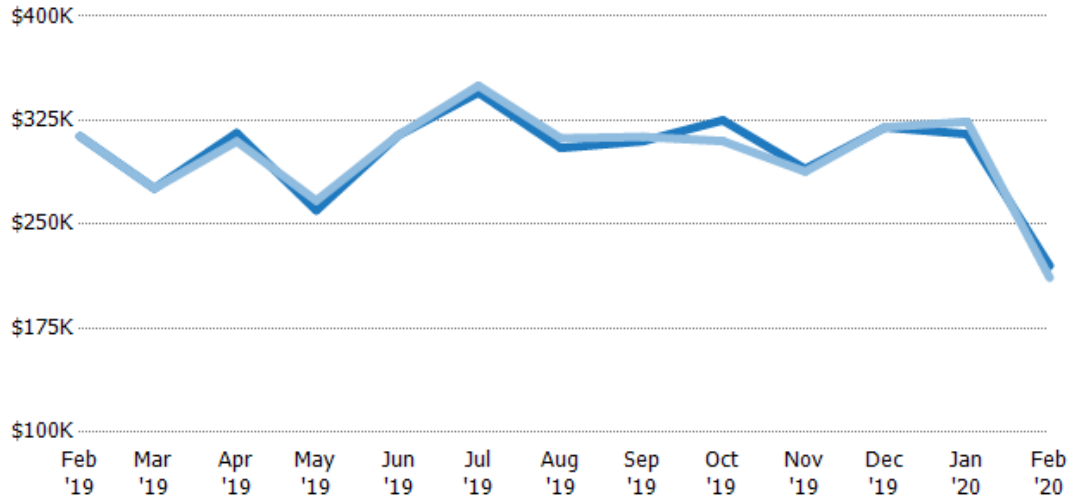
Month/Year	Avg List Price	Avg Sales Price	Avg Sales Price as a % of Avg List Price
Feb '20	\$279K	\$274K	98%
Feb '19	\$367K	\$379K	103%
Mar '19	\$325K	\$323K	99%
Apr '19	\$300K	\$300K	100%
May '19	\$292K	\$291K	100%
Jun '19	\$316K	\$316K	100%
Jul '19	\$335K	\$335K	100%
Aug '19	\$319K	\$322K	101%
Sep '19	\$314K	\$315K	100%
Oct '19	\$322K	\$320K	99%
Nov '19	\$324K	\$322K	99%
Dec '19	\$303K	\$299K	99%
Jan '20	\$314K	\$315K	100%

## Median Sales Price vs Median Listing Price

The median sales price as a percentage of the median listing price for properties sold each month.

### Filters Used

ZIP: Essex, VT 05451, Essex Junction, VT 05452, Essex Junction, VT 05453  
 Property Type:  
 Condo/Townhouse/Apt, Single Family Residence



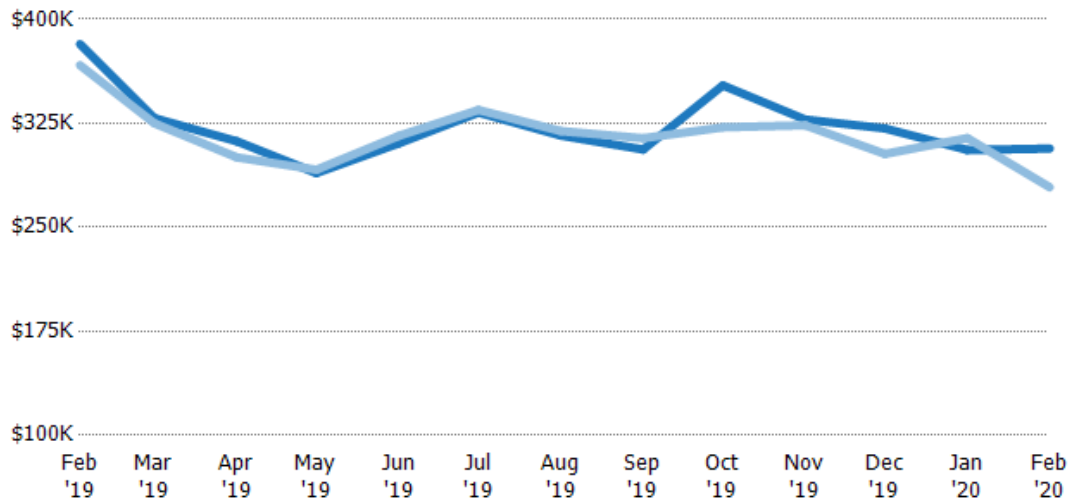
	Feb '19	Mar '19	Apr '19	May '19	Jun '19	Jul '19	Aug '19	Sep '19	Oct '19	Nov '19	Dec '19	Jan '20	Feb '20
Median List Price	\$313K	\$276K	\$316K	\$260K	\$314K	\$345K	\$305K	\$310K	\$325K	\$290K	\$320K	\$315K	\$220K
Median Sales Price	\$313K	\$276K	\$310K	\$267K	\$314K	\$350K	\$312K	\$313K	\$310K	\$288K	\$320K	\$324K	\$212K
Med Sales Price as a % of Med List Price	100%	100%	98%	103%	100%	101%	102%	101%	95%	99%	100%	103%	96%

## Average Sales Price vs Average Est Value

The average sales price as a percentage of the average AVM or RVM® valuation estimate for properties sold each month.

### Filters Used

ZIP: Essex, VT 05451, Essex Junction, VT 05452, Essex Junction, VT 05453  
 Property Type:  
 Condo/Townhouse/Apt, Single Family Residence



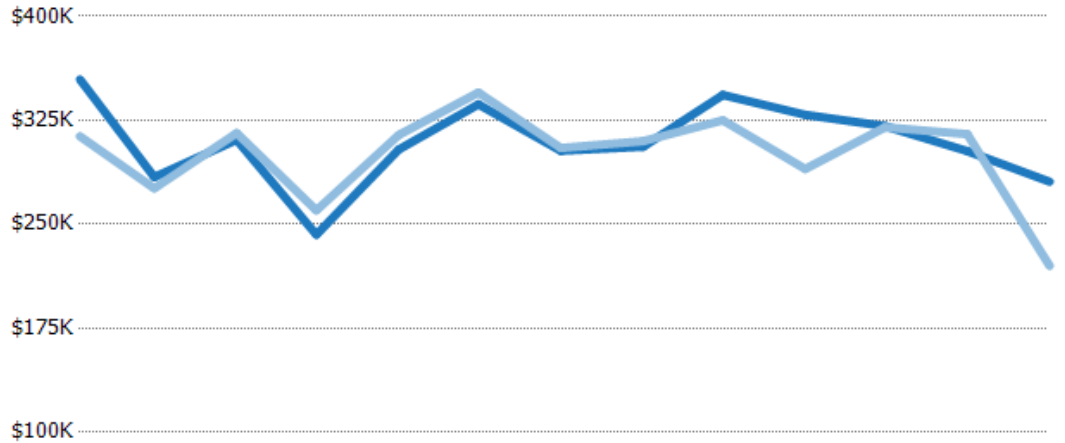
	Feb '19	Mar '19	Apr '19	May '19	Jun '19	Jul '19	Aug '19	Sep '19	Oct '19	Nov '19	Dec '19	Jan '20	Feb '20
Avg Est Value	\$382K	\$329K	\$312K	\$289K	\$311K	\$333K	\$316K	\$306K	\$352K	\$328K	\$321K	\$306K	\$307K
Avg Sales Price	\$367K	\$325K	\$300K	\$292K	\$316K	\$335K	\$319K	\$314K	\$322K	\$324K	\$303K	\$314K	\$279K
Avg Sales Price as a % of Avg Est Value	96%	99%	96%	101%	102%	101%	101%	103%	91%	99%	94%	103%	91%

## Median Sales Price vs Median Est Value

The median sales price as a percent of the median AVM or RVM® valuation estimate for properties sold each month.

### Filters Used

ZIP: Essex, VT 05451, Essex Junction, VT 05452, Essex Junction, VT 05453  
 Property Type:  
 Condo/Townhouse/Apt, Single Family Residence



	Feb '19	Mar '19	Apr '19	May '19	Jun '19	Jul '19	Aug '19	Sep '19	Oct '19	Nov '19	Dec '19	Jan '20	Feb '20
Median Est Value	\$355K	\$284K	\$311K	\$243K	\$304K	\$336K	\$303K	\$306K	\$343K	\$329K	\$321K	\$303K	\$281K
Median Sales Price	\$313K	\$276K	\$316K	\$260K	\$314K	\$345K	\$305K	\$310K	\$325K	\$290K	\$320K	\$315K	\$220K
Med Sales Price as a % of Med Est Value	88%	97%	102%	107%	103%	103%	101%	101%	95%	88%	100%	104%	78%