

Summary of Key Listing and Sales Metrics

A summary of the key metrics selected to be included in the report. MLS sources where licensed.

Key Metrics	Feb 2020	Feb 2019	+ / -	YTD 2020	YTD 2019	+ / -
Listing Activity Charts Metrics						
New Listing Count	38	41	-7.3%	80	83	-3.6%
New Listing Volume	\$14,870,500	\$17,714,128	-16.1%	\$32,772,600	\$30,991,628	+5.7%
Active Listing Count	290	403	-28%	N/A	N/A	
Active Listing Volume	\$137,307,300	\$171,748,713	-20.1%	N/A	N/A	
Average Listing Price	\$473,473	\$426,175	+11.1%	\$464,554	\$419,406	+10.8%
Median Listing Price	\$322,000	\$295,000	+9.2%	\$313,220	\$295,000	+6.2%
Median Days in RPR	196.5	218	-9.9%	191.51	210.71	-9.1%
Months of Inventory	12.6	23.7	-46.8%	17	18	-5.2%
Absorption Rate	7.93%	4.22%	+3.7%	5.87%	5.57%	+0.3%
Sales Activity Charts Metrics						
New Pending Sales Count	50	36	+38.9%	92	69	+33.3%
New Pending Sales Volume	\$13,813,751	\$10,027,900	+37.8%	\$26,890,351	\$18,035,400	+49.1%
Pending Sales Count	63	64	-1.6%	N/A	N/A	
Pending Sales Volume	\$18,421,300	\$17,172,900	+7.3%	N/A	N/A	
Closed Sales Count	30	18	+66.7%	53	35	+51.4%
Closed Sales Volume	\$11,462,251	\$4,411,675	+159.8%	\$18,139,051	\$7,788,675	+132.9%
Average Sales Price	\$382,075	\$245,093	+55.9%	\$342,246	\$222,534	+53.8%
Median Sales Price	\$227,250	\$193,688	+17.3%	\$247,972	\$183,396	+35.2%

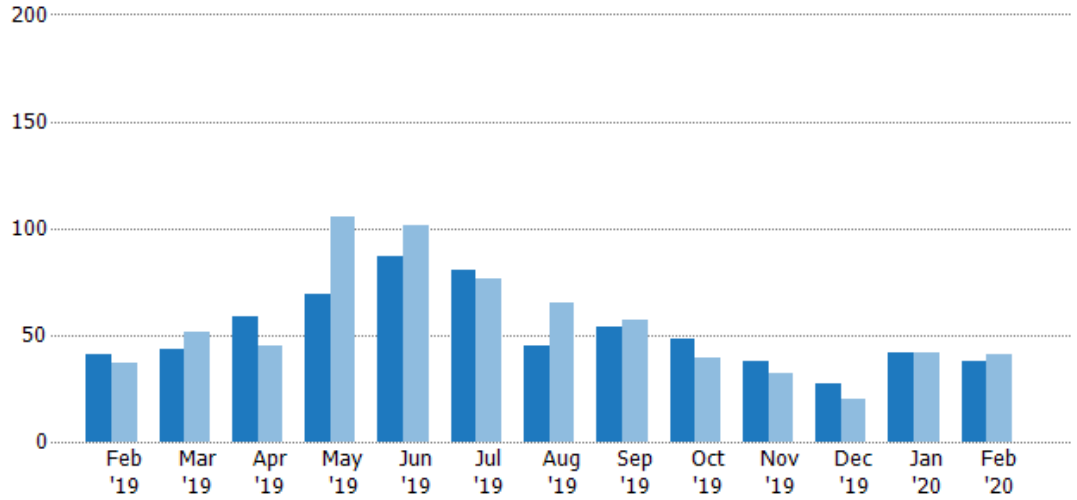
New Listings

The number of new residential listings that were added each month.

Filters Used

State: VT
 County: Bennington County, Vermont
 Property Type: Condo/Townhouse/Apt, Single Family Residence

Month/Year	Count	% Chg.
Feb '20	38	-7.3%
Feb '19	41	10.8%
Feb '18	37	10.8%



Current Year	41	43	59	69	87	80	45	54	48	38	27	42	38
Prior Year	37	51	45	105	101	76	65	57	39	32	20	42	41
Percent Change from Prior Year	11%	-16%	31%	-34%	-14%	5%	-31%	-5%	23%	19%	35%	0%	-7%

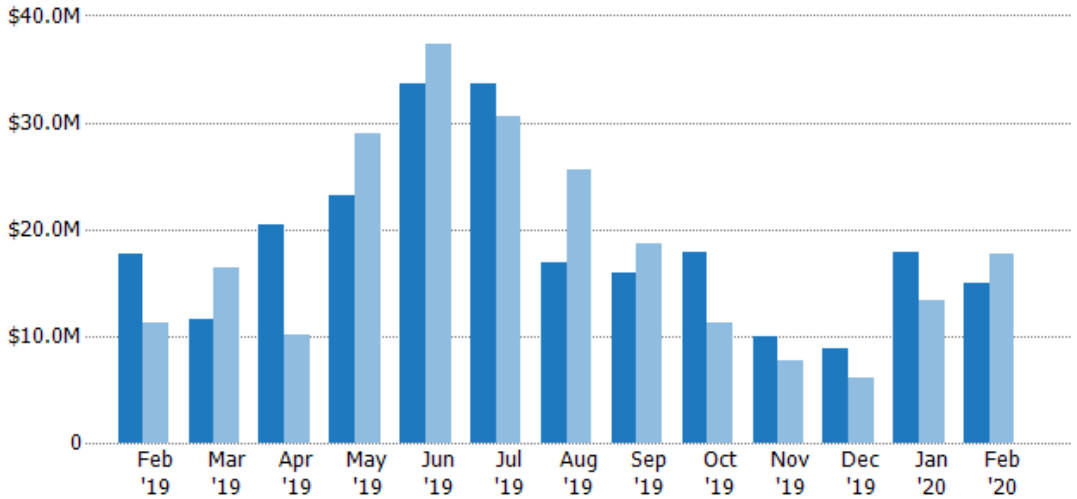
New Listing Volume

The sum of the listing price of residential listings that were added each month.

Filters Used

State: VT
 County: Bennington County, Vermont
 Property Type: Condo/Townhouse/Apt, Single Family Residence

Month/Year	Volume	% Chg.
Feb '20	\$14.9M	-16.1%
Feb '19	\$17.7M	57%
Feb '18	\$11.3M	26.6%



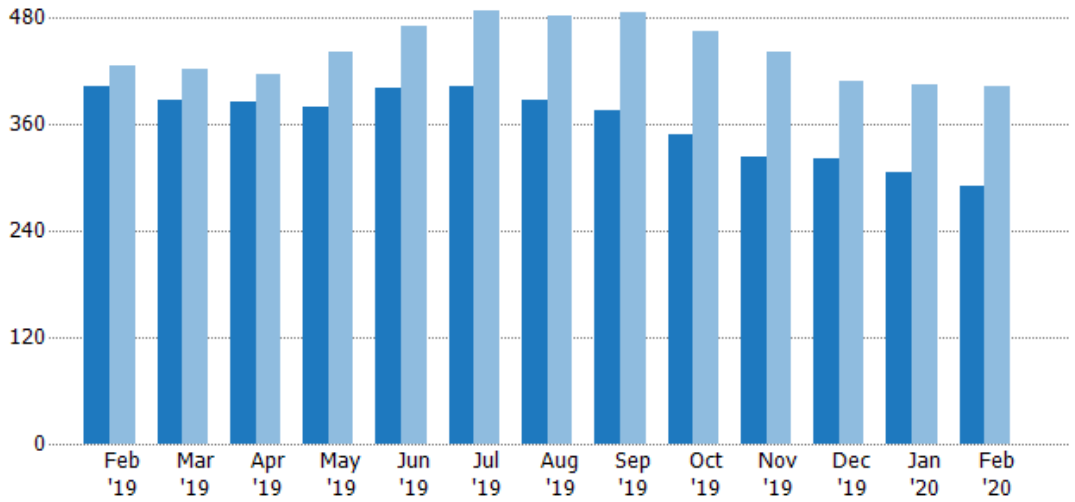
Current Year	\$17.7M	\$11.6M	\$20.5M	\$23.2M	\$33.6M	\$33.6M	\$17M	\$15.9M	\$17.9M	\$10M	\$8.76M	\$17.9M	\$14.9M
Prior Year	\$11.3M	\$16.3M	\$10.2M	\$29M	\$37.3M	\$30.5M	\$25.6M	\$18.6M	\$11.3M	\$7.76M	\$6.02M	\$13.3M	\$17.7M
Percent Change from Prior Year	57%	-29%	101%	-20%	-10%	10%	-34%	-15%	58%	29%	45%	35%	-16%

Active Listings

The number of active residential listings at the end of each month.

Filters Used

State: VT
 County: Bennington County, Vermont
 Property Type: Condo/Townhouse/Apt, Single Family Residence



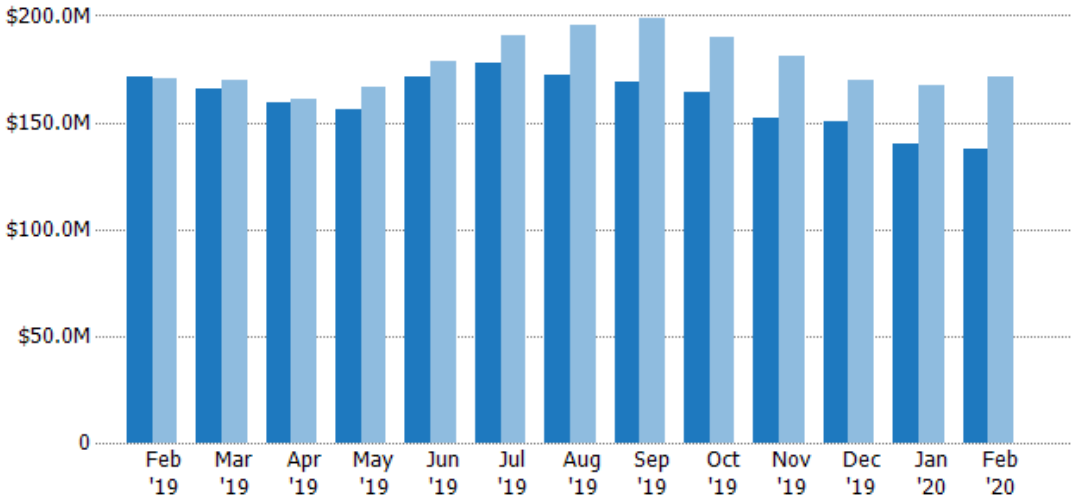
Month/Year	Count	% Chg.
Feb '20	290	-28%
Feb '19	403	-5.6%
Feb '18	427	-1.9%

Active Listing Volume

The sum of the listing price of active residential listings at the end of each month.

Filters Used

State: VT
 County: Bennington County, Vermont
 Property Type: Condo/Townhouse/Apt, Single Family Residence



Month/Year	Volume	% Chg.
Feb '20	\$137M	-20.1%
Feb '19	\$172M	0.9%
Feb '18	\$170M	-0.6%

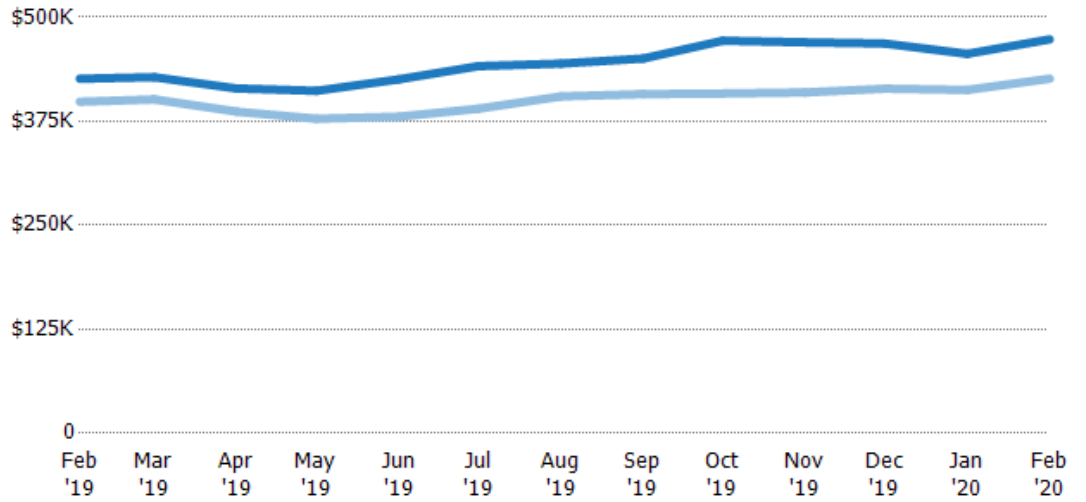
Average Listing Price

The average listing price of active residential listings at the end of each month.

Filters Used

State: VT
 County: Bennington County, Vermont
 Property Type: Condo/Townhouse/Apt, Single Family Residence

Month/Year	Price	% Chg.
Feb '20	\$473K	11.1%
Feb '19	\$426K	6.9%
Feb '18	\$399K	1.3%



Current Year	\$426K	\$428K	\$414K	\$412K	\$425K	\$441K	\$444K	\$450K	\$472K	\$470K	\$468K	\$456K	\$473K
Prior Year	\$399K	\$401K	\$387K	\$378K	\$381K	\$390K	\$405K	\$408K	\$408K	\$410K	\$414K	\$413K	\$426K
Percent Change from Prior Year	7%	7%	7%	9%	12%	13%	10%	10%	16%	15%	13%	11%	11%

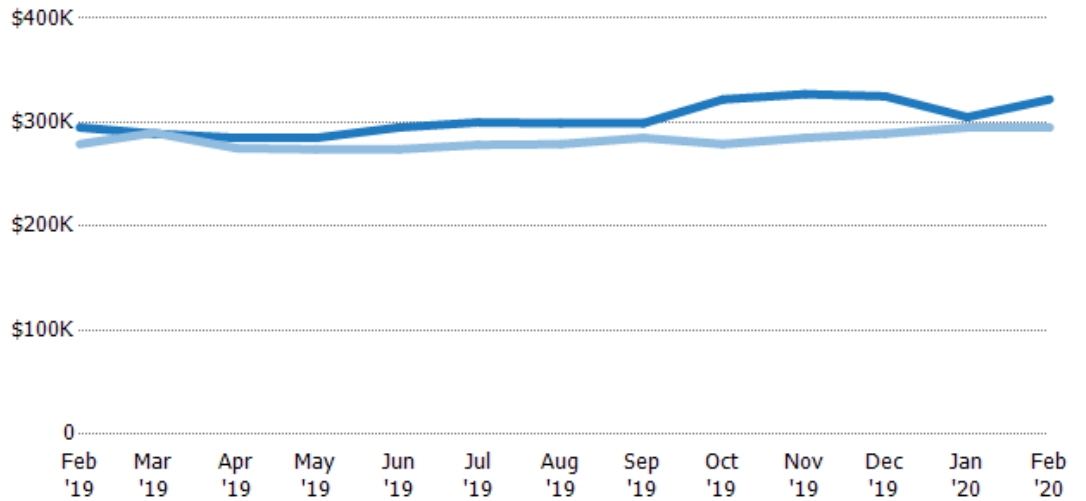
Median Listing Price

The median listing price of active residential listings at the end of each month.

Filters Used

State: VT
 County: Bennington County, Vermont
 Property Type: Condo/Townhouse/Apt, Single Family Residence

Month/Year	Price	% Chg.
Feb '20	\$322K	9.2%
Feb '19	\$295K	5.7%
Feb '18	\$279K	0%



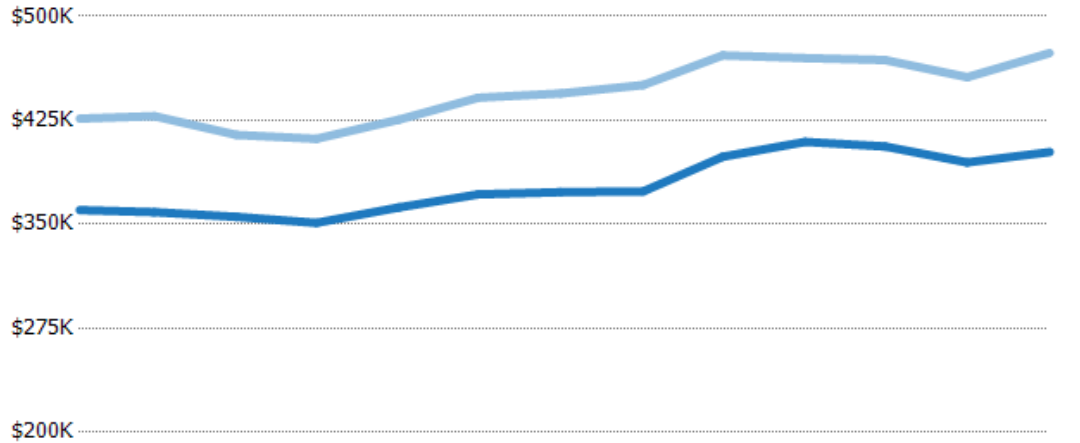
Current Year	\$295K	\$289K	\$285K	\$285K	\$295K	\$300K	\$299K	\$299K	\$322K	\$327K	\$325K	\$305K	\$322K
Prior Year	\$279K	\$290K	\$275K	\$274K	\$274K	\$278K	\$279K	\$285K	\$279K	\$285K	\$289K	\$295K	\$295K
Percent Change from Prior Year	6%	0%	4%	4%	8%	8%	7%	5%	15%	15%	12%	3%	9%

Average Listing Price vs Average Est Value

The average listing price as a percentage of the average AVM or RVM® valuation estimate for active listings each month.

Filters Used

State: VT
 County: Bennington County, Vermont
 Property Type: Condo/Townhouse/Apt, Single Family Residence



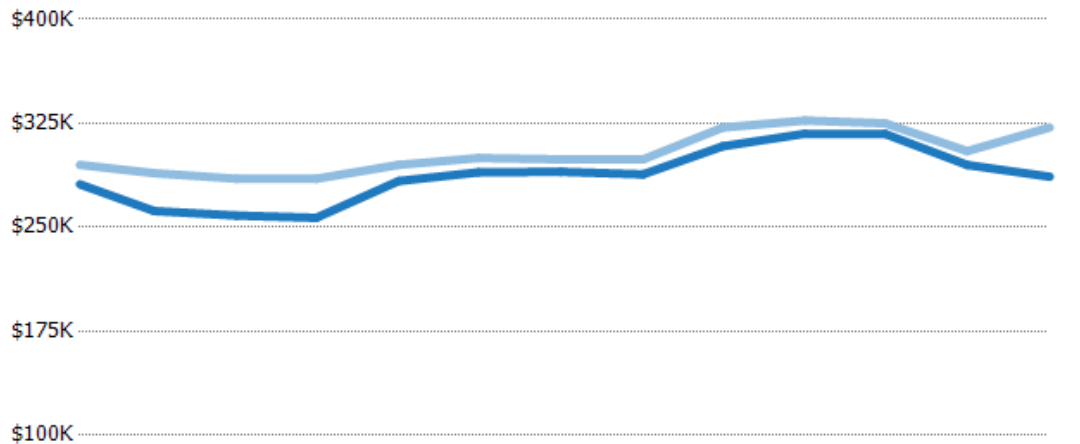
	Feb '19	Mar '19	Apr '19	May '19	Jun '19	Jul '19	Aug '19	Sep '19	Oct '19	Nov '19	Dec '19	Jan '20	Feb '20
Avg Est Value	\$360K	\$359K	\$355K	\$351K	\$362K	\$372K	\$373K	\$374K	\$399K	\$409K	\$406K	\$395K	\$402K
Avg Listing Price	\$426K	\$428K	\$414K	\$412K	\$425K	\$441K	\$444K	\$450K	\$472K	\$470K	\$468K	\$456K	\$473K
Avg Listing Price as a % of Avg Est Value	118%	119%	117%	117%	117%	119%	119%	121%	118%	115%	115%	116%	118%

Median Listing Price vs Median Est Value

The median listing price as a percentage of the median AVM or RVM® valuation estimate for active listings each month.

Filters Used

State: VT
 County: Bennington County, Vermont
 Property Type: Condo/Townhouse/Apt, Single Family Residence



	Feb '19	Mar '19	Apr '19	May '19	Jun '19	Jul '19	Aug '19	Sep '19	Oct '19	Nov '19	Dec '19	Jan '20	Feb '20
Median Est Value	\$281K	\$262K	\$258K	\$257K	\$283K	\$290K	\$290K	\$288K	\$308K	\$317K	\$317K	\$295K	\$287K
Median Listing Price	\$295K	\$289K	\$285K	\$285K	\$295K	\$300K	\$299K	\$299K	\$322K	\$327K	\$325K	\$305K	\$322K
Med Listing Price as a % of Med Est Value	105%	110%	110%	111%	104%	104%	103%	104%	104%	103%	102%	103%	112%

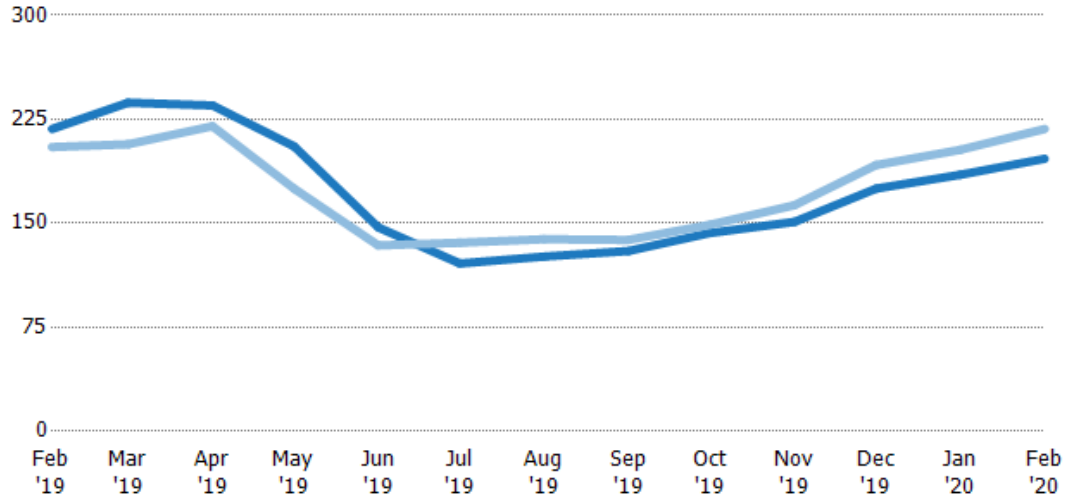
Median Days in RPR

The median number of days between when residential properties are first displayed as active listings in RPR and when accepted offers have been noted in RPR.

Filters Used

State: VT
 County: Bennington County, Vermont
 Property Type: Condo/Townhouse/Apt, Single Family Residence

Month/Year	Days	% Chg.
Feb '20	197	-9.9%
Feb '19	218	6.3%
Feb '18	205	1%



	Feb '19	Mar '19	Apr '19	May '19	Jun '19	Jul '19	Aug '19	Sep '19	Oct '19	Nov '19	Dec '19	Jan '20	Feb '20
Current Year	218	237	235	206	147	121	126	130	143	151	175	185	197
Prior Year	205	207	220	175	134	136	139	138	149	163	192	203	218
Percent Change from Prior Year	6%	14%	7%	17%	10%	-11%	-9%	-6%	-4%	-7%	-9%	-9%	-10%

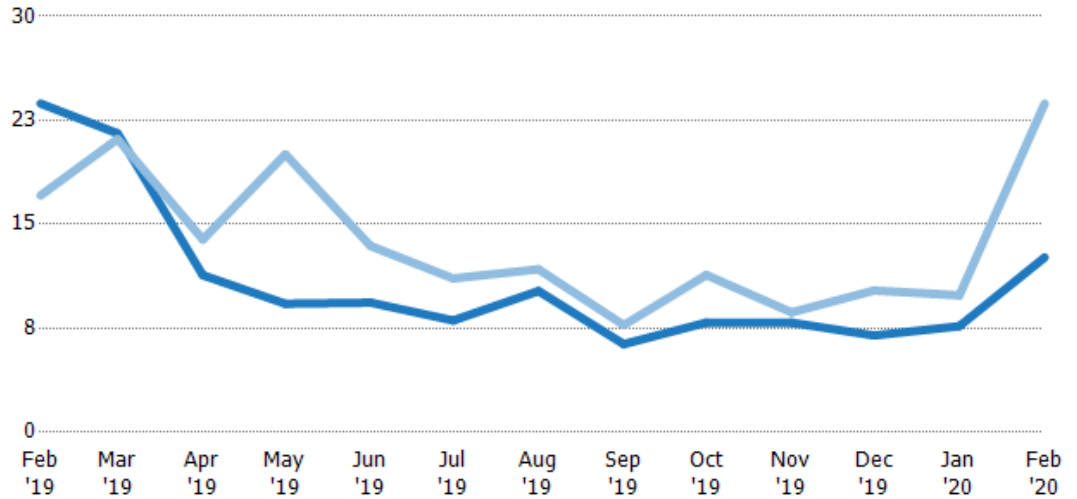
Months of Inventory

The number of months it would take to exhaust active listings at the current sales rate.

Filters Used

State: VT
 County: Bennington County, Vermont
 Property Type: Condo/Townhouse/Apt, Single Family Residence

Month/Year	Months	% Chg.
Feb '20	12.6	-46.8%
Feb '19	23.7	38.8%
Feb '18	17.1	-12.4%



	Feb '19	Mar '19	Apr '19	May '19	Jun '19	Jul '19	Aug '19	Sep '19	Oct '19	Nov '19	Dec '19	Jan '20	Feb '20
Current Year	23.7	21.6	11.3	9.27	9.35	8.06	10.2	6.36	7.91	7.9	6.98	7.65	12.6
Prior Year	17.1	21.2	13.9	20	13.4	11.1	11.8	7.73	11.3	8.65	10.2	9.88	23.7
Percent Change from Prior Year	39%	2%	-19%	-54%	-30%	-27%	-13%	-18%	-30%	-9%	-32%	-23%	-47%

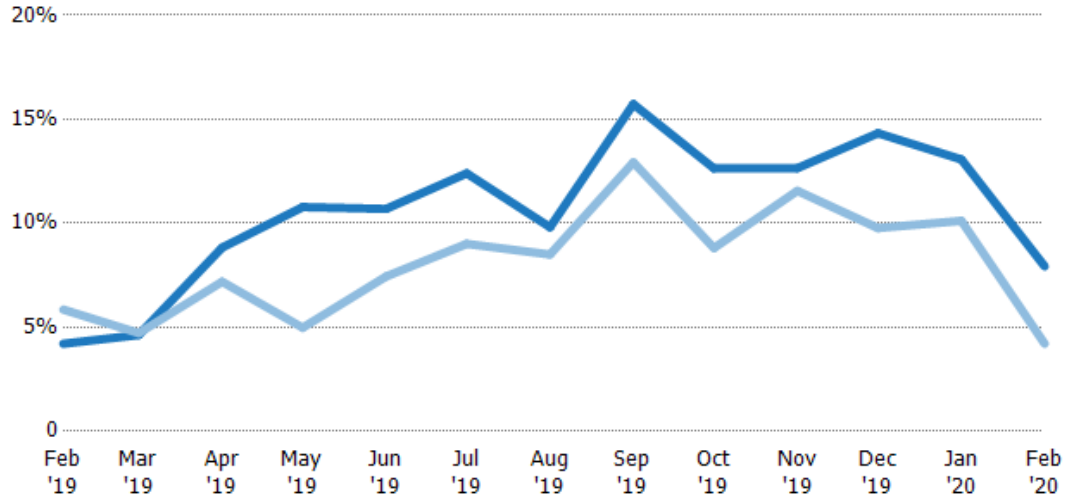
Absorption Rate

The percentage of inventory sold per month.

Filters Used

State: VT
 County: Bennington County, Vermont
 Property Type: Condo/Townhouse/Apt, Single Family Residence

Month/Year	Rate	Chg.
Feb '20	8%	-3.7%
Feb '19	4%	1.6%
Feb '18	6%	14.2%



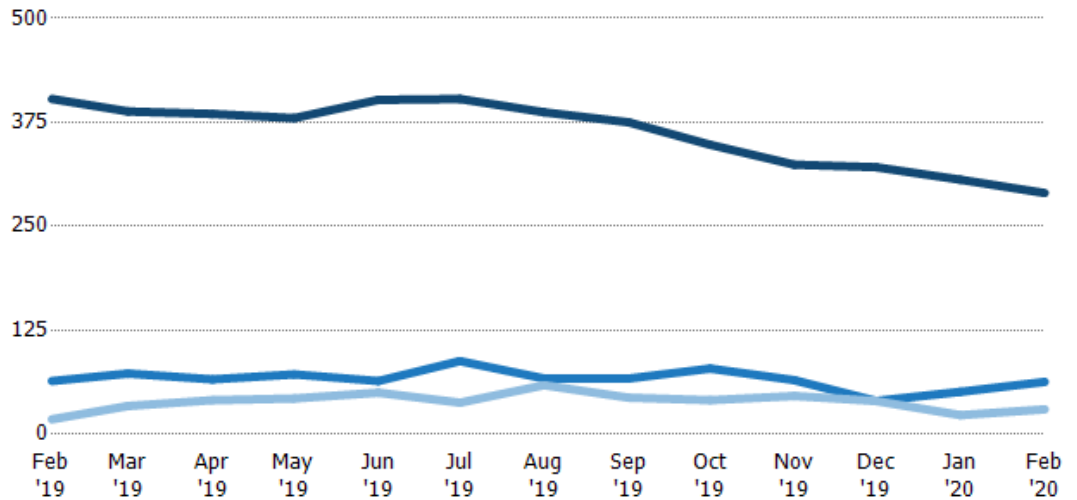
	Feb '19	Mar '19	Apr '19	May '19	Jun '19	Jul '19	Aug '19	Sep '19	Oct '19	Nov '19	Dec '19	Jan '20	Feb '20
Current Year	4%	5%	9%	11%	11%	12%	10%	16%	13%	13%	14%	13%	8%
Prior Year	6%	5%	7%	5%	7%	9%	9%	13%	9%	12%	10%	10%	4%
Change from Prior Year	2%	0%	-2%	-6%	-3%	-3%	-1%	-3%	-4%	-1%	-5%	-3%	-4%

Active/Pending/Sold Units

The number of residential properties that were Active, Pending and Sold each month.

Filters Used

State: VT
 County: Bennington County, Vermont
 Property Type: Condo/Townhouse/Apt, Single Family Residence



	Feb '19	Mar '19	Apr '19	May '19	Jun '19	Jul '19	Aug '19	Sep '19	Oct '19	Nov '19	Dec '19	Jan '20	Feb '20
Active	403	388	385	380	402	403	387	375	348	324	321	306	290
Pending	64	73	66	72	64	88	67	67	79	65	40	51	63
Sold	18	34	41	43	50	38	59	44	41	46	40	23	30

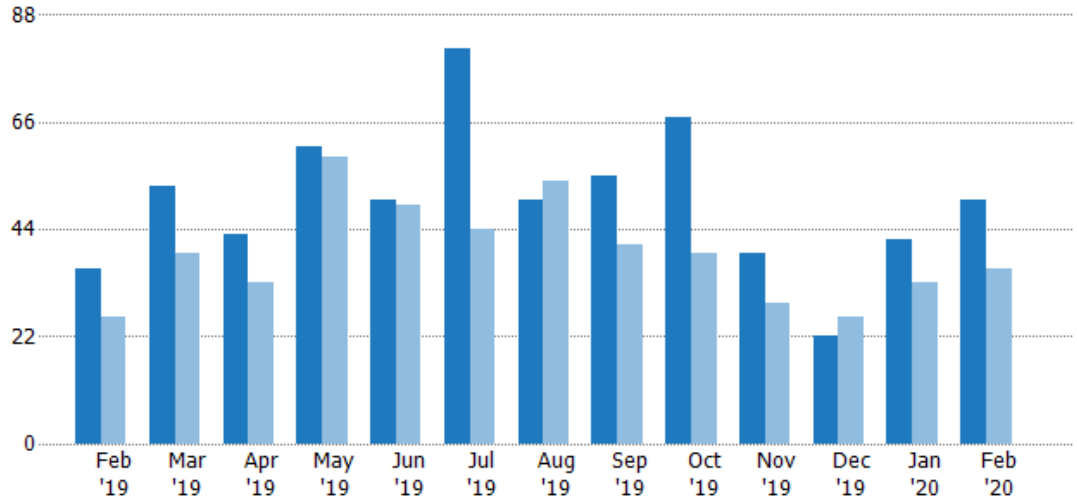
New Pending Sales

The number of residential properties with accepted offers that were added each month.

Filters Used

State: VT
 County: Bennington County, Vermont
 Property Type: Condo/Townhouse/Apt, Single Family Residence

Month/Year	Count	% Chg.
Feb '20	50	38.9%
Feb '19	36	38.5%
Feb '18	26	19.2%



Current Year	36	53	43	61	50	81	50	55	67	39	22	42	50
Prior Year	26	39	33	59	49	44	54	41	39	29	26	33	36
Percent Change from Prior Year	38%	36%	30%	3%	2%	84%	-7%	34%	72%	34%	-15%	27%	39%

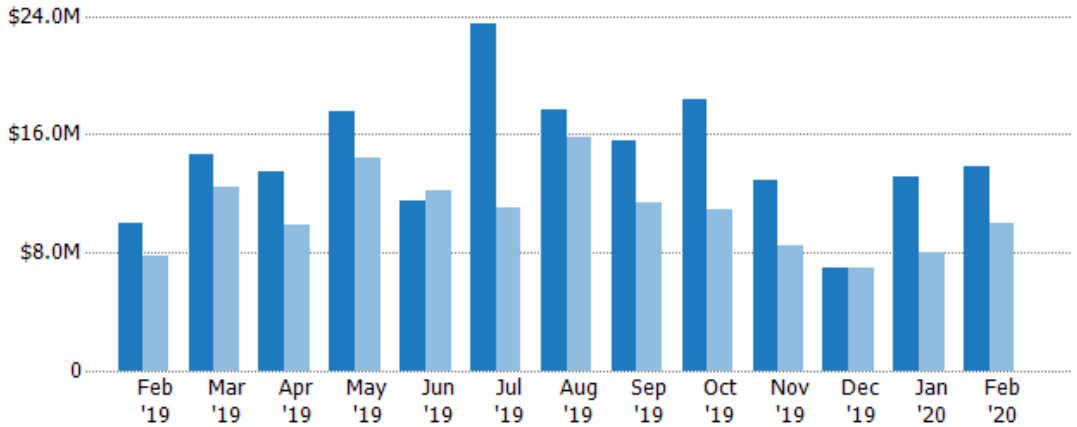
New Pending Sales Volume

The sum of the sales price of residential properties with accepted offers that were added each month.

Filters Used

State: VT
 County: Bennington County, Vermont
 Property Type: Condo/Townhouse/Apt, Single Family Residence

Month/Year	Volume	% Chg.
Feb '20	\$13.8M	37.8%
Feb '19	\$10M	29.6%
Feb '18	\$7.73M	17.3%



Current Year	\$10M	\$14.6M	\$13.5M	\$17.5M	\$11.5M	\$23.5M	\$17.7M	\$15.5M	\$18.3M	\$12.9M	\$6.93M	\$13.1M	\$13.8M
Prior Year	\$7.73M	\$12.5M	\$9.87M	\$14.4M	\$12.2M	\$11.1M	\$15.8M	\$11.4M	\$10.9M	\$8.44M	\$7.01M	\$8.01M	\$10M
Percent Change from Prior Year	30%	17%	37%	21%	-6%	112%	12%	36%	68%	53%	-1%	63%	38%

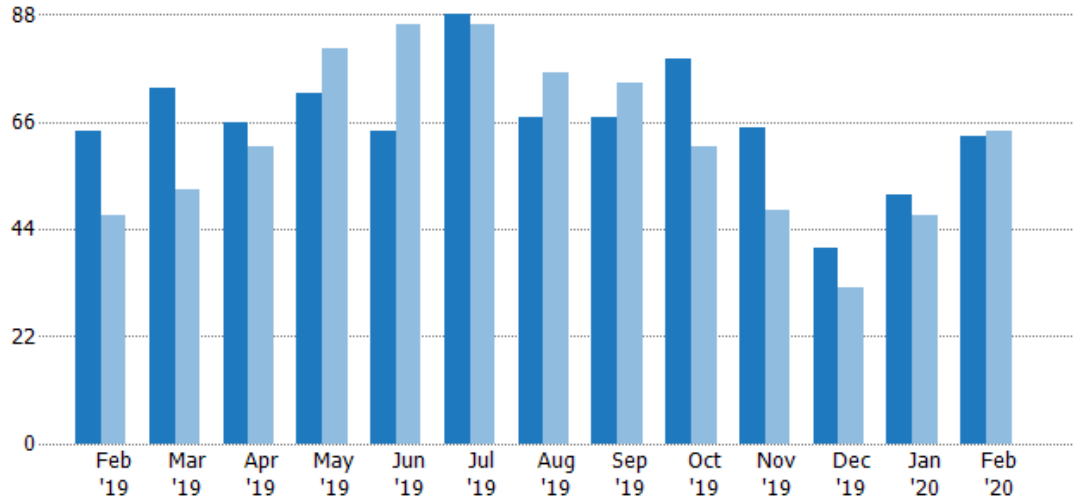
Pending Sales

The number of residential properties with accepted offers that were available at the end each month.

Filters Used

State: VT
 County: Bennington County, Vermont
 Property Type: Condo/Townhouse/Apt, Single Family Residence

Month/Year	Count	% Chg.
Feb '20	63	-1.6%
Feb '19	64	36.2%
Feb '18	47	17%



Current Year	64	73	66	72	64	88	67	67	79	65	40	51	63
Prior Year	47	52	61	81	86	86	76	74	61	48	32	47	64
Percent Change from Prior Year	36%	40%	8%	-11%	-26%	2%	-12%	-9%	30%	35%	25%	9%	-2%

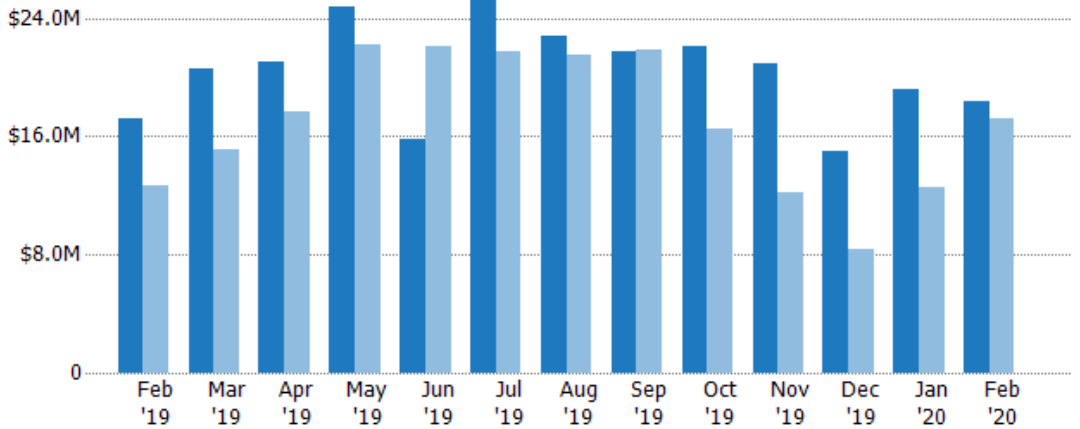
Pending Sales Volume

The sum of the sales price of residential properties with accepted offers that were available at the end of each month.

Filters Used

State: VT
 County: Bennington County, Vermont
 Property Type: Condo/Townhouse/Apt, Single Family Residence

Month/Year	Volume	% Chg.
Feb '20	\$18.4M	7.3%
Feb '19	\$17.2M	35.9%
Feb '18	\$12.6M	35.8%



Current Year	\$17.2M	\$20.5M	\$21.1M	\$24.7M	\$15.8M	\$25.3M	\$22.8M	\$21.7M	\$22M	\$20.9M	\$15M	\$19.2M	\$18.4M
Prior Year	\$12.6M	\$15.1M	\$17.6M	\$22.2M	\$22.1M	\$21.8M	\$21.5M	\$21.9M	\$16.6M	\$12.1M	\$8.34M	\$12.5M	\$17.2M
Percent Change from Prior Year	36%	36%	19%	11%	-28%	16%	6%	-1%	33%	72%	80%	54%	7%

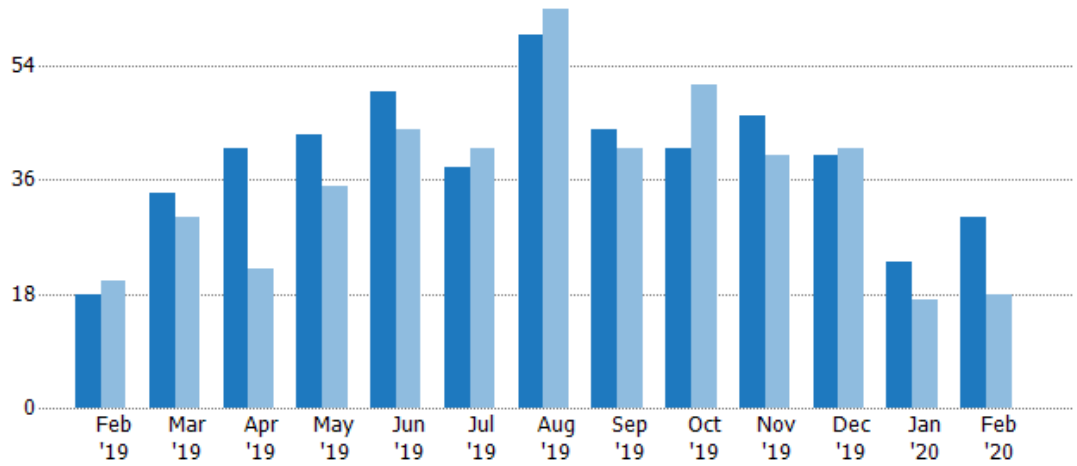
Closed Sales

The total number of residential properties sold each month.

Filters Used

State: VT
 County: Bennington County, Vermont
 Property Type: Condo/Townhouse/Apt, Single Family Residence

Month/Year	Count	% Chg.
Feb '20	30	66.7%
Feb '19	18	-10%
Feb '18	20	-40%



Current Year	18	34	41	43	50	38	59	44	41	46	40	23	30
Prior Year	20	30	22	35	44	41	63	41	51	40	41	17	18
Percent Change from Prior Year	-10%	13%	86%	23%	14%	-7%	-6%	7%	-20%	15%	-2%	35%	67%

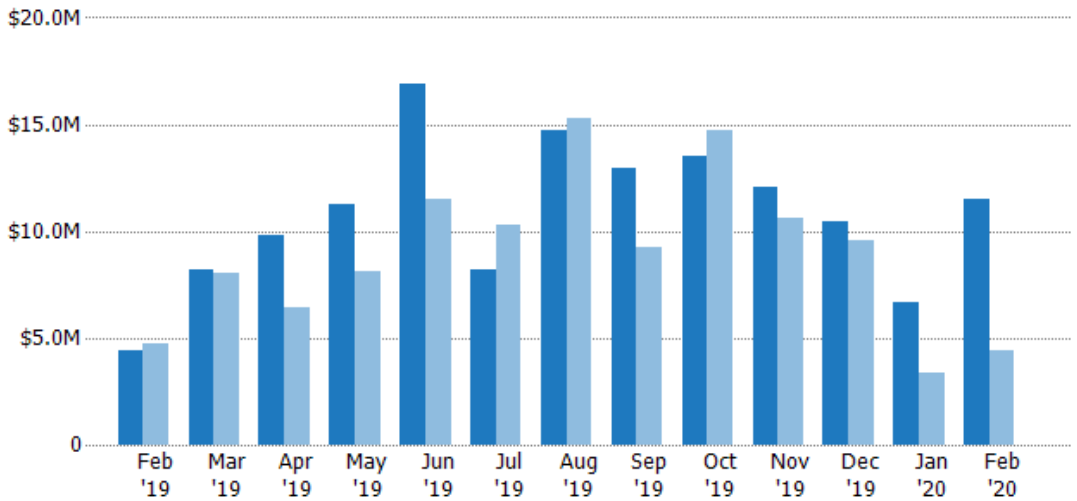
Closed Sales Volume

The sum of the sales price of residential properties sold each month.

Filters Used

State: VT
 County: Bennington County, Vermont
 Property Type: Condo/Townhouse/Apt, Single Family Residence

Month/Year	Volume	% Chg.
Feb '20	\$11.5M	159.8%
Feb '19	\$4.41M	-7.2%
Feb '18	\$4.75M	-31.8%



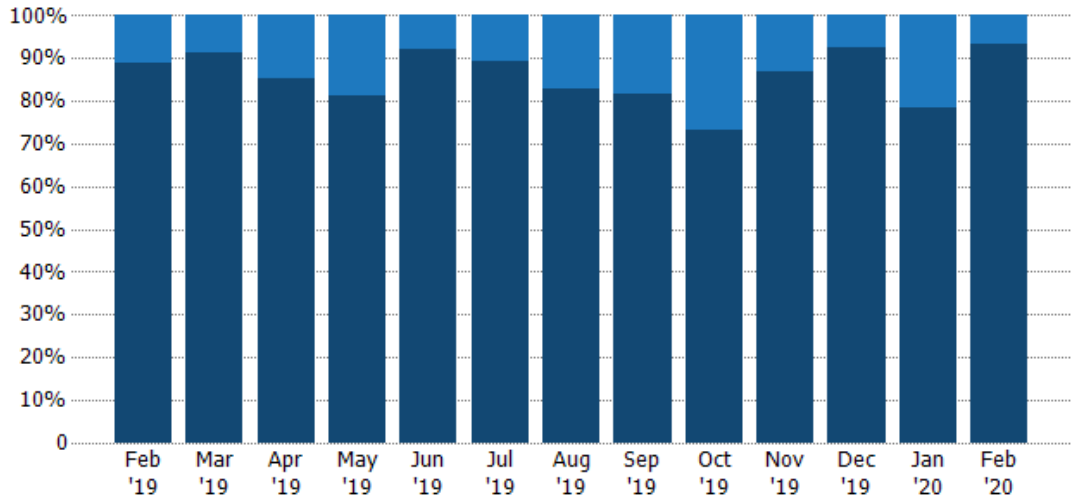
Current Year	\$4.41M	\$8.23M	\$9.81M	\$11.2M	\$16.9M	\$8.17M	\$14.7M	\$13M	\$13.5M	\$12.1M	\$10.4M	\$6.68M	\$11.5M
Prior Year	\$4.75M	\$8.05M	\$6.46M	\$8.09M	\$11.5M	\$10.3M	\$15.3M	\$9.28M	\$14.7M	\$10.6M	\$9.57M	\$3.38M	\$4.41M
Percent Change from Prior Year	-7%	2%	52%	39%	47%	-21%	-4%	40%	-8%	14%	9%	98%	160%

Closed Sales by Property Type

The percentage of residential properties sold each month by property type.

Filters Used

State: VT
 County: Bennington County, Vermont
 Property Type: Condo/Townhouse/Apt, Single Family Residence



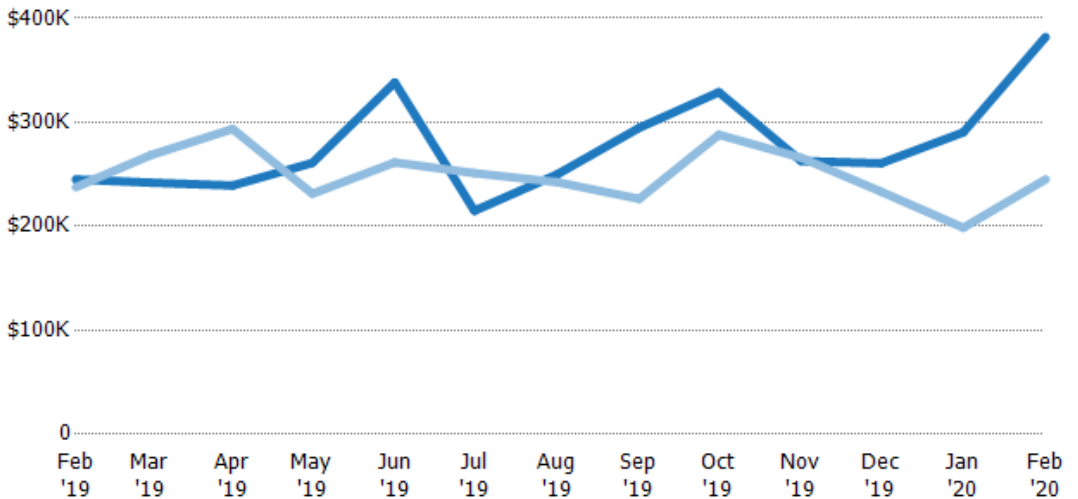
Property Type	Feb '19	Mar '19	Apr '19	May '19	Jun '19	Jul '19	Aug '19	Sep '19	Oct '19	Nov '19	Dec '19	Jan '20	Feb '20
Condo/Townhouse	11%	9%	15%	19%	8%	11%	17%	18%	27%	13%	8%	22%	7%
Single Family Residence	89%	91%	85%	81%	92%	89%	83%	82%	73%	87%	93%	78%	93%

Average Sales Price

The average sales price of the residential properties sold each month.

Filters Used

State: VT
 County: Bennington County, Vermont
 Property Type: Condo/Townhouse/Apt, Single Family Residence



Month/Year	Price	% Chg.
Feb '20	\$382K	55.9%
Feb '19	\$245K	3.1%
Feb '18	\$238K	13.7%

Property Type	Feb '19	Mar '19	Apr '19	May '19	Jun '19	Jul '19	Aug '19	Sep '19	Oct '19	Nov '19	Dec '19	Jan '20	Feb '20
Current Year	\$245K	\$242K	\$239K	\$261K	\$338K	\$215K	\$250K	\$295K	\$329K	\$263K	\$261K	\$290K	\$382K
Prior Year	\$238K	\$268K	\$294K	\$231K	\$261K	\$251K	\$242K	\$226K	\$288K	\$266K	\$233K	\$199K	\$245K
Percent Change from Prior Year	3%	-10%	-19%	13%	29%	-14%	3%	30%	14%	-1%	12%	46%	56%

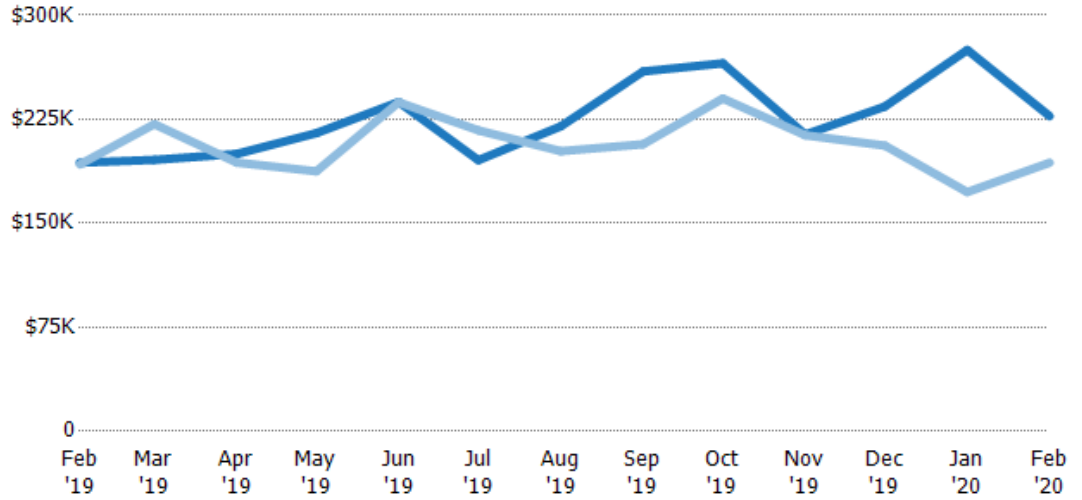
Median Sales Price

The median sales price of the residential properties sold each month.

Filters Used

State: VT
 County: Bennington County, Vermont
 Property Type: Condo/Townhouse/Apt, Single Family Residence

Month/Year	Price	% Chg.
Feb '20	\$227K	17.3%
Feb '19	\$194K	0.6%
Feb '18	\$193K	23.6%



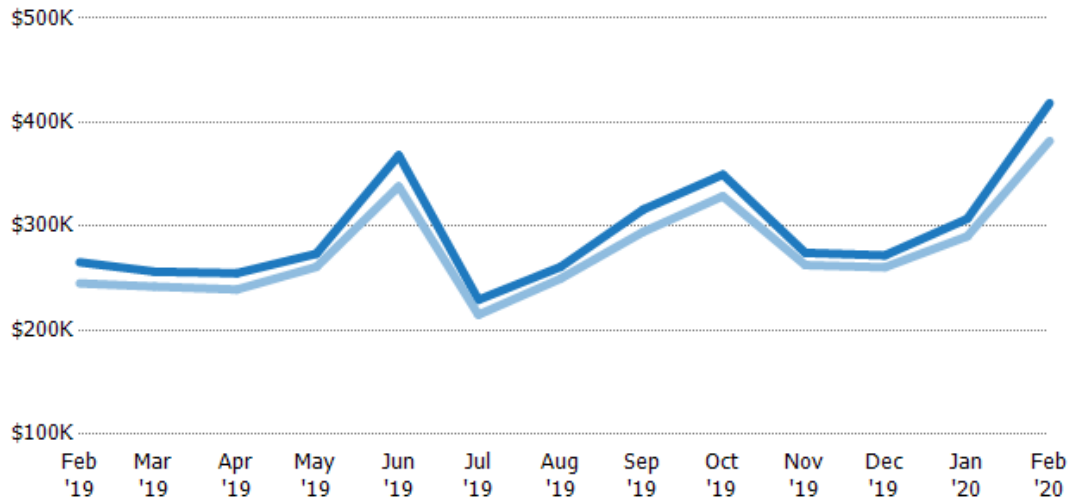
	Feb '19	Mar '19	Apr '19	May '19	Jun '19	Jul '19	Aug '19	Sep '19	Oct '19	Nov '19	Dec '19	Jan '20	Feb '20
Current Year	\$194K	\$196K	\$200K	\$215K	\$238K	\$196K	\$220K	\$260K	\$265K	\$214K	\$234K	\$275K	\$227K
Prior Year	\$193K	\$222K	\$194K	\$188K	\$237K	\$217K	\$202K	\$207K	\$240K	\$214K	\$206K	\$173K	\$194K
Percent Change from Prior Year	1%	-12%	3%	15%	0%	-10%	9%	25%	11%	0%	14%	59%	17%

Average Sales Price vs Average Listing Price

The average sales price as a percentage of the average listing price for properties sold each month.

Filters Used

State: VT
 County: Bennington County, Vermont
 Property Type: Condo/Townhouse/Apt, Single Family Residence



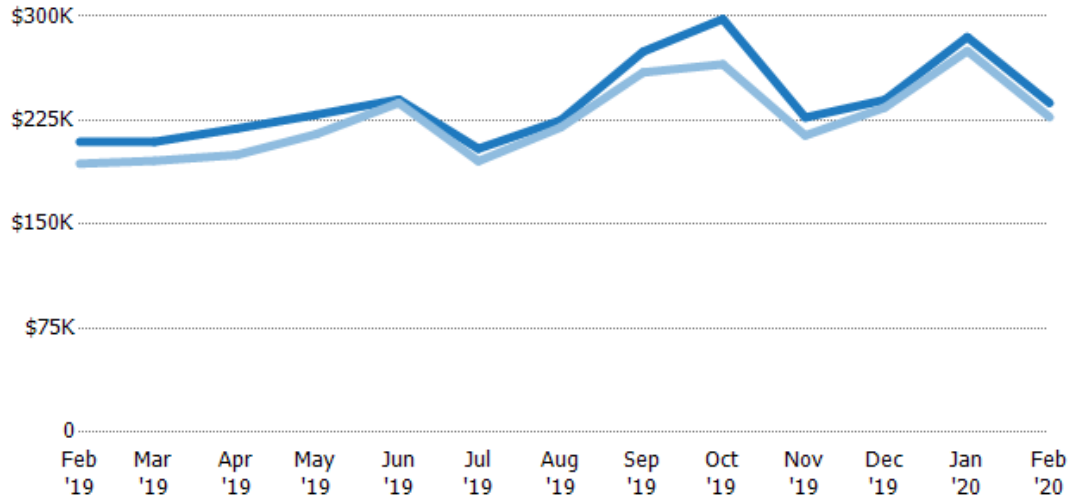
	Feb '19	Mar '19	Apr '19	May '19	Jun '19	Jul '19	Aug '19	Sep '19	Oct '19	Nov '19	Dec '19	Jan '20	Feb '20
Avg List Price	\$265K	\$256K	\$255K	\$274K	\$368K	\$229K	\$261K	\$316K	\$350K	\$274K	\$272K	\$307K	\$418K
Avg Sales Price	\$245K	\$242K	\$239K	\$261K	\$338K	\$215K	\$250K	\$295K	\$329K	\$263K	\$261K	\$290K	\$382K
Avg Sales Price as a % of Avg List Price	92%	94%	94%	95%	92%	94%	96%	93%	94%	96%	96%	95%	91%

Median Sales Price vs Median Listing Price

The median sales price as a percentage of the median listing price for properties sold each month.

Filters Used

State: VT
 County: Bennington County, Vermont
 Property Type: Condo/Townhouse/Apt, Single Family Residence



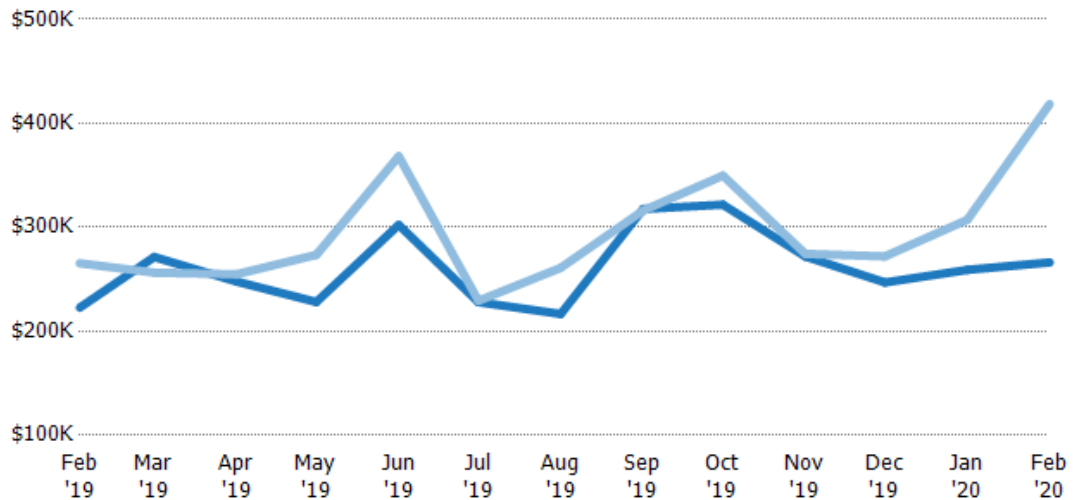
	Feb '19	Mar '19	Apr '19	May '19	Jun '19	Jul '19	Aug '19	Sep '19	Oct '19	Nov '19	Dec '19	Jan '20	Feb '20
Median List Price	\$209K	\$209K	\$219K	\$229K	\$240K	\$205K	\$225K	\$275K	\$298K	\$227K	\$240K	\$285K	\$237K
Median Sales Price	\$194K	\$196K	\$200K	\$215K	\$238K	\$196K	\$220K	\$260K	\$265K	\$214K	\$234K	\$275K	\$227K
Med Sales Price as a % of Med List Price	92%	93%	91%	94%	99%	96%	98%	95%	89%	94%	98%	96%	96%

Average Sales Price vs Average Est Value

The average sales price as a percentage of the average AVM or RVM® valuation estimate for properties sold each month.

Filters Used

State: VT
 County: Bennington County, Vermont
 Property Type: Condo/Townhouse/Apt, Single Family Residence



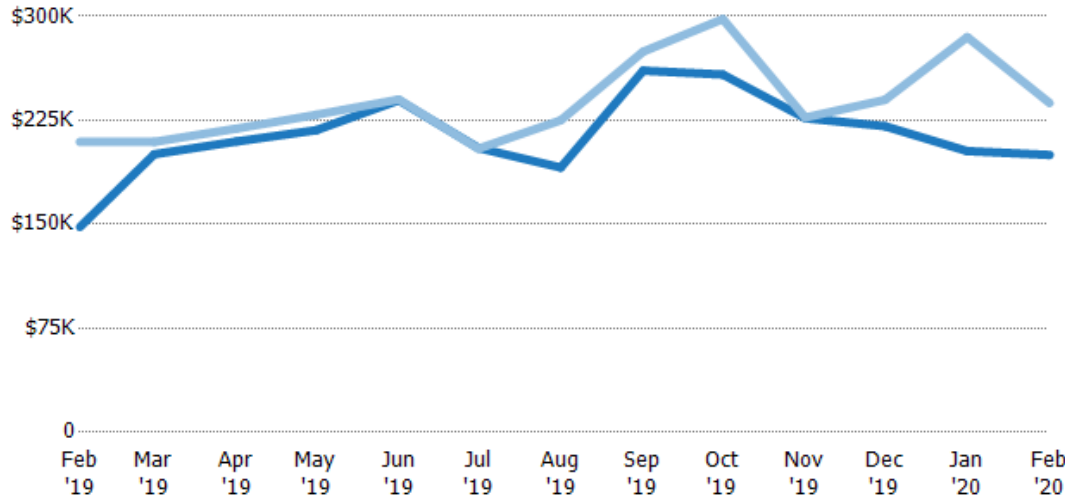
	Feb '19	Mar '19	Apr '19	May '19	Jun '19	Jul '19	Aug '19	Sep '19	Oct '19	Nov '19	Dec '19	Jan '20	Feb '20
Avg Est Value	\$223K	\$271K	\$248K	\$228K	\$302K	\$228K	\$217K	\$318K	\$322K	\$272K	\$247K	\$259K	\$266K
Avg Sales Price	\$265K	\$256K	\$255K	\$274K	\$368K	\$229K	\$261K	\$316K	\$350K	\$274K	\$272K	\$307K	\$418K
Avg Sales Price as a % of Avg Est Value	119%	94%	103%	120%	122%	101%	121%	100%	109%	101%	110%	119%	157%

Median Sales Price vs Median Est Value

The median sales price as a percent of the median AVM or RVM® valuation estimate for properties sold each month.

Filters Used

State: VT
 County: Bennington County, Vermont
 Property Type: Condo/Townhouse/Apt, Single Family Residence



	Feb '19	Mar '19	Apr '19	May '19	Jun '19	Jul '19	Aug '19	Sep '19	Oct '19	Nov '19	Dec '19	Jan '20	Feb '20
Median Est Value	\$148K	\$201K	\$210K	\$218K	\$239K	\$205K	\$191K	\$261K	\$258K	\$227K	\$221K	\$203K	\$200K
Median Sales Price	\$209K	\$209K	\$219K	\$229K	\$240K	\$205K	\$225K	\$275K	\$298K	\$227K	\$240K	\$285K	\$237K
Med Sales Price as a % of Med Est Value	142%	104%	104%	105%	100%	100%	118%	105%	116%	100%	109%	141%	119%