

## Summary of Key Listing and Sales Metrics

A summary of the key metrics selected to be included in the report. MLS sources where licensed.

Key Metrics	Oct 2019	Oct 2018	+ / -	YTD 2019	YTD 2018	+ / -
<b>Listing Activity Charts Metrics</b>						
New Listing Count	9	12	-25%	112	112	+/-
New Listing Volume	\$1,335,900	\$1,619,800	-17.5%	\$21,350,750	\$20,326,800	+5%
Active Listing Count	55	63	-12.7%	N/A	N/A	
Active Listing Volume	\$11,522,150	\$12,654,750	-8.9%	N/A	N/A	
Average Listing Price	\$209,494	\$200,869	+4.3%	\$193,515	\$194,773	-0.6%
Median Listing Price	\$130,000	\$169,000	-23.1%	\$146,493	\$165,922	-11.7%
Median Days in RPR	121	121	+/-	110.81	129.12	-14.2%
Months of Inventory	13.8	9	+52.8%	9.6	7.4	+30.1%
Absorption Rate	7.27%	11.11%	-3.8%	10.46%	13.6%	-3.1%
<b>Sales Activity Charts Metrics</b>						
New Pending Sales Count	10	8	+25%	96	74	+29.7%
New Pending Sales Volume	\$1,609,450	\$1,517,300	+6.1%	\$14,333,199	\$12,014,600	+19.3%
Pending Sales Count	21	19	+10.5%	N/A	N/A	
Pending Sales Volume	\$2,977,250	\$2,877,500	+3.5%	N/A	N/A	
Closed Sales Count	12	6	+100%	71	57	+24.6%
Closed Sales Volume	\$1,890,450	\$913,600	+106.9%	\$10,412,000	\$9,364,249	+11.2%
Average Sales Price	\$157,538	\$152,267	+3.5%	\$146,648	\$164,285	-10.7%
Median Sales Price	\$117,000	\$144,500	-19%	\$130,911	\$143,025	-8.5%

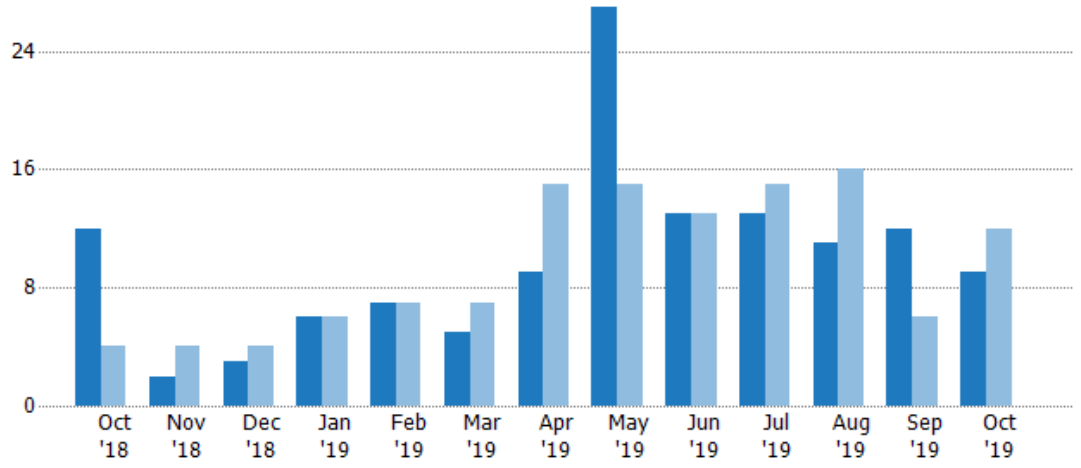
## New Listings

The number of new residential listings that were added each month.

### Filters Used

ZIP: Saint Johnsbury, VT 05819,  
East Saint Johnsbury, VT 05838,  
Saint Johnsbury Center, VT 05863  
Property Type:  
Condo/Townhouse/Apt, Single  
Family Residence

Month/Year	Count	% Chg.
Oct '19	9	-25%
Oct '18	12	200%
Oct '17	4	25%



Current Year	12	2	3	6	7	5	9	27	13	13	11	12	9
Prior Year	4	4	4	6	7	7	15	15	13	15	16	6	12
Percent Change from Prior Year	200%	-50%	-25%	0%	0%	-29%	-40%	80%	0%	-13%	-31%	100%	-25%

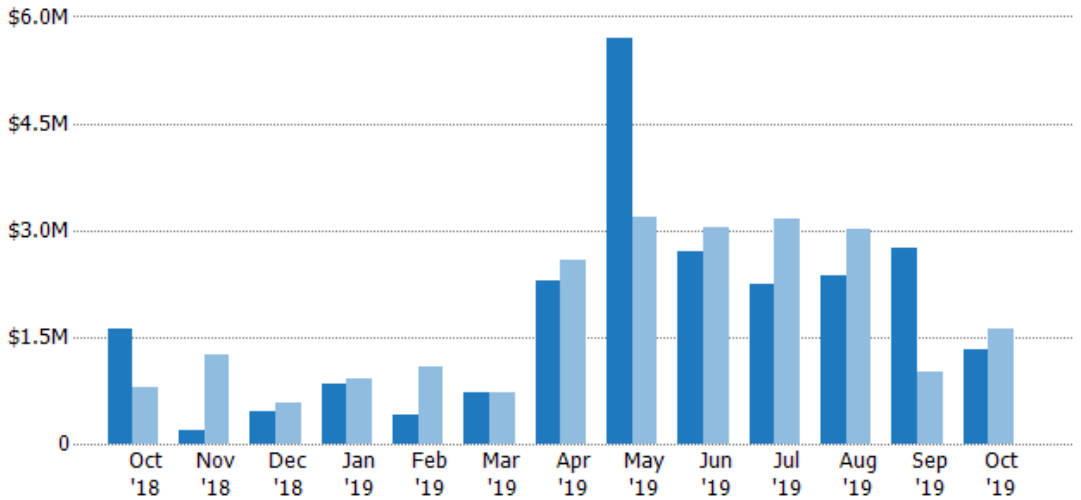
## New Listing Volume

The sum of the listing price of residential listings that were added each month.

### Filters Used

ZIP: Saint Johnsbury, VT 05819,  
East Saint Johnsbury, VT 05838,  
Saint Johnsbury Center, VT 05863  
Property Type:  
Condo/Townhouse/Apt, Single  
Family Residence

Month/Year	Volume	% Chg.
Oct '19	\$1.34M	-17.5%
Oct '18	\$1.62M	101.7%
Oct '17	\$803K	-1.4%



Current Year	\$1.62M	\$199K	\$449K	\$851K	\$415K	\$720K	\$2.3M	\$5.71M	\$2.69M	\$2.23M	\$2.36M	\$2.74M	\$1.34M
Prior Year	\$803K	\$1.24M	\$575K	\$905K	\$1.08M	\$710K	\$2.58M	\$3.19M	\$3.05M	\$3.17M	\$3.01M	\$1.01M	\$1.62M
Percent Change from Prior Year	102%	-84%	-22%	-6%	-62%	1%	-11%	79%	-12%	-30%	-22%	170%	-18%

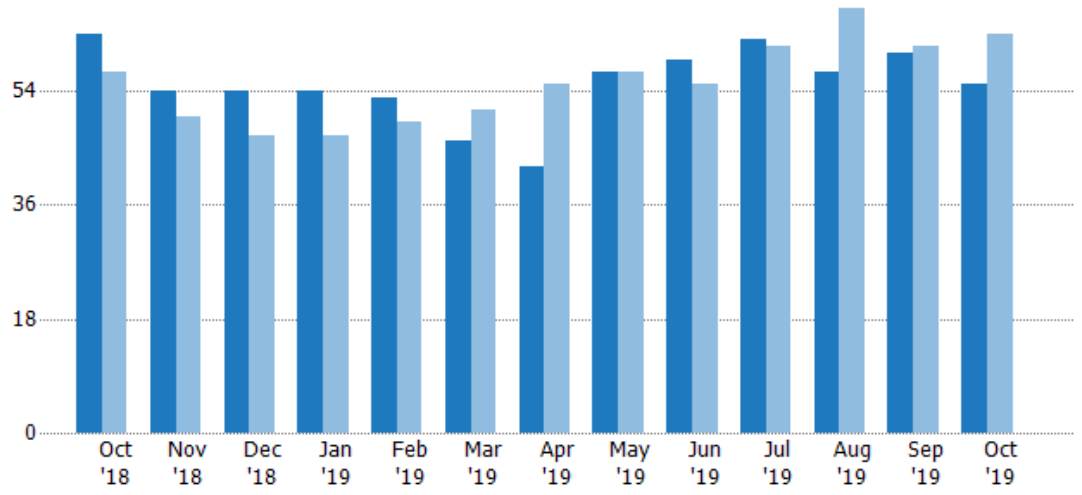
## Active Listings

The number of active residential listings at the end of each month.

### Filters Used

ZIP: Saint Johnsbury, VT 05819,  
East Saint Johnsbury, VT 05838,  
Saint Johnsbury Center, VT 05863  
Property Type:  
Condo/Townhouse/Apt, Single  
Family Residence

Month/ Year	Count	% Chg.
Oct '19	55	-12.7%
Oct '18	63	10.5%
Oct '17	57	10.5%



Current Year	63	54	54	54	53	46	42	57	59	62	57	60	55
Prior Year	57	50	47	47	49	51	55	57	55	61	67	61	63
Percent Change from Prior Year	11%	8%	15%	15%	8%	-10%	-24%	0%	7%	2%	-15%	-2%	-13%

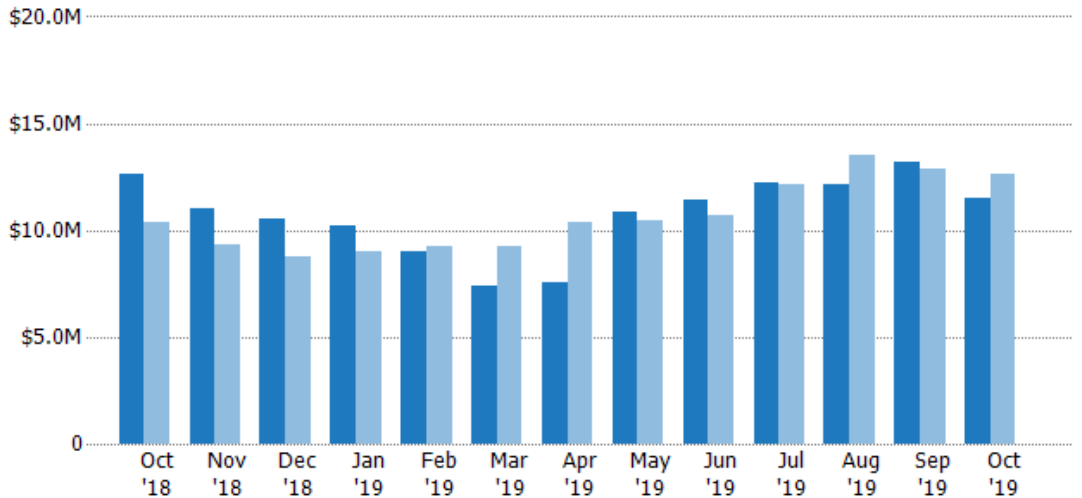
## Active Listing Volume

The sum of the listing price of active residential listings at the end of each month.

### Filters Used

ZIP: Saint Johnsbury, VT 05819,  
East Saint Johnsbury, VT 05838,  
Saint Johnsbury Center, VT 05863  
Property Type:  
Condo/Townhouse/Apt, Single  
Family Residence

Month/ Year	Volume	% Chg.
Oct '19	\$11.5M	-8.9%
Oct '18	\$12.7M	22.3%
Oct '17	\$10.3M	13%



Current Year	\$12.7M	\$11M	\$10.6M	\$10.2M	\$9.03M	\$7.37M	\$7.56M	\$10.9M	\$11.4M	\$12.2M	\$12.1M	\$13.2M	\$11.5M
Prior Year	\$10.3M	\$9.37M	\$8.75M	\$9.03M	\$9.23M	\$9.22M	\$10.4M	\$10.5M	\$10.7M	\$12.2M	\$13.5M	\$12.8M	\$12.7M
Percent Change from Prior Year	22%	17%	21%	13%	-2%	-20%	-27%	4%	7%	0%	-10%	3%	-9%

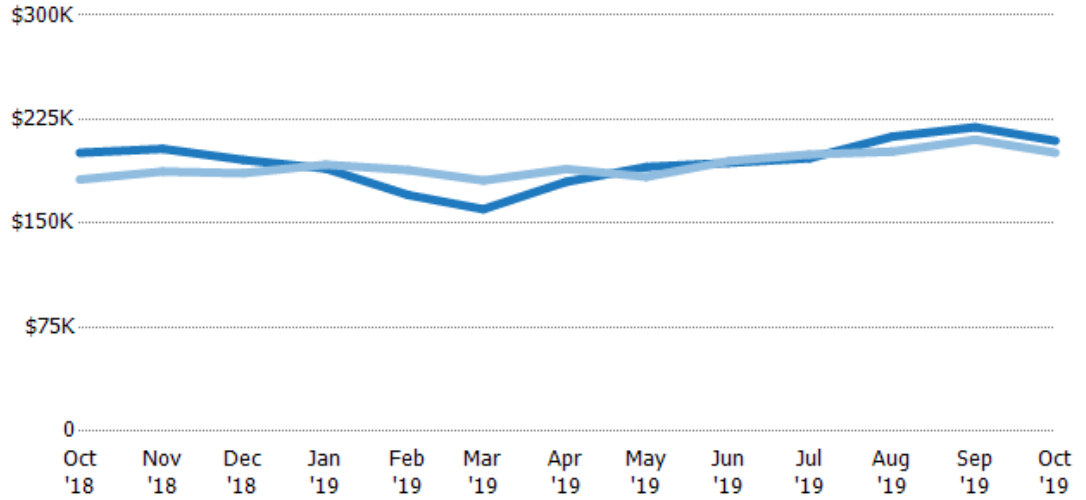
## Average Listing Price

The average listing price of active residential listings at the end of each month.

### Filters Used

ZIP: Saint Johnsbury, VT 05819,  
East Saint Johnsbury, VT 05838,  
Saint Johnsbury Center, VT 05863  
Property Type:  
Condo/Townhouse/Apt, Single  
Family Residence

Month/ Year	Price	% Chg.
Oct '19	\$209K	4.3%
Oct '18	\$201K	10.6%
Oct '17	\$182K	2.3%



Current Year	\$201K	\$204K	\$196K	\$189K	\$170K	\$160K	\$180K	\$191K	\$194K	\$197K	\$212K	\$219K	\$209K
Prior Year	\$182K	\$187K	\$186K	\$192K	\$188K	\$181K	\$189K	\$183K	\$195K	\$200K	\$202K	\$210K	\$201K
Percent Change from Prior Year	11%	9%	5%	-1%	-10%	-11%	-5%	4%	-1%	-1%	5%	4%	4%

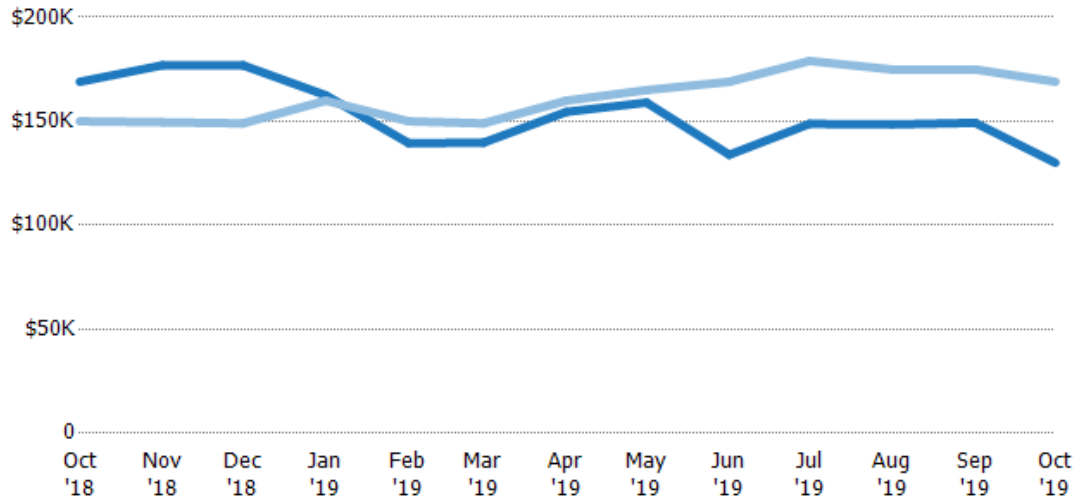
## Median Listing Price

The median listing price of active residential listings at the end of each month.

### Filters Used

ZIP: Saint Johnsbury, VT 05819,  
East Saint Johnsbury, VT 05838,  
Saint Johnsbury Center, VT 05863  
Property Type:  
Condo/Townhouse/Apt, Single  
Family Residence

Month/ Year	Price	% Chg.
Oct '19	\$130K	-23.1%
Oct '18	\$169K	12.7%
Oct '17	\$150K	6%



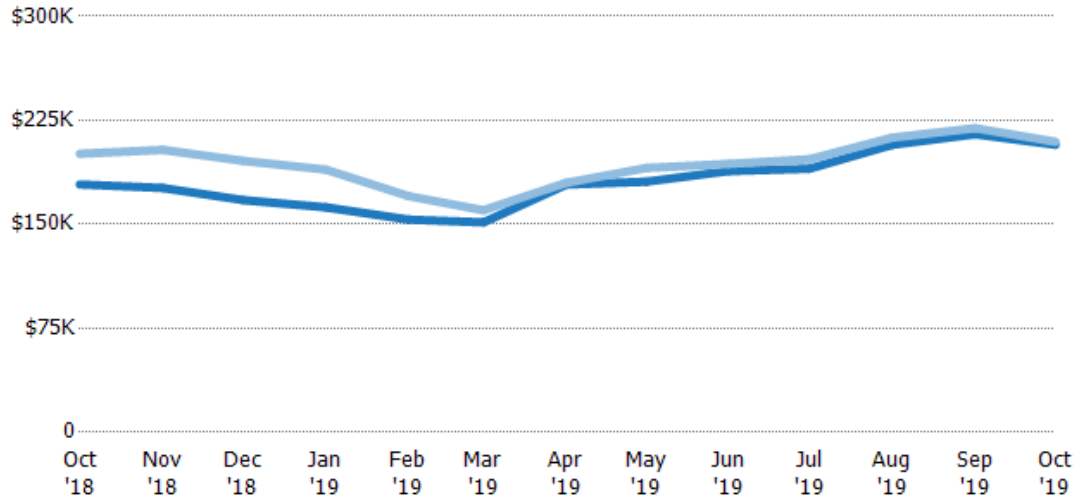
Current Year	\$169K	\$177K	\$177K	\$163K	\$140K	\$140K	\$155K	\$159K	\$134K	\$149K	\$149K	\$149K	\$130K
Prior Year	\$150K	\$150K	\$149K	\$160K	\$150K	\$149K	\$160K	\$165K	\$169K	\$179K	\$175K	\$175K	\$169K
Percent Change from Prior Year	13%	18%	19%	2%	-7%	-6%	-3%	-4%	-21%	-17%	-15%	-15%	-23%

## Average Listing Price vs Average Est Value

The average listing price as a percentage of the average AVM or RVM® valuation estimate for active listings each month.

### Filters Used

ZIP: Saint Johnsbury, VT 05819,  
East Saint Johnsbury, VT 05838,  
Saint Johnsbury Center, VT 05863  
Property Type:  
Condo/Townhouse/Apt, Single  
Family Residence



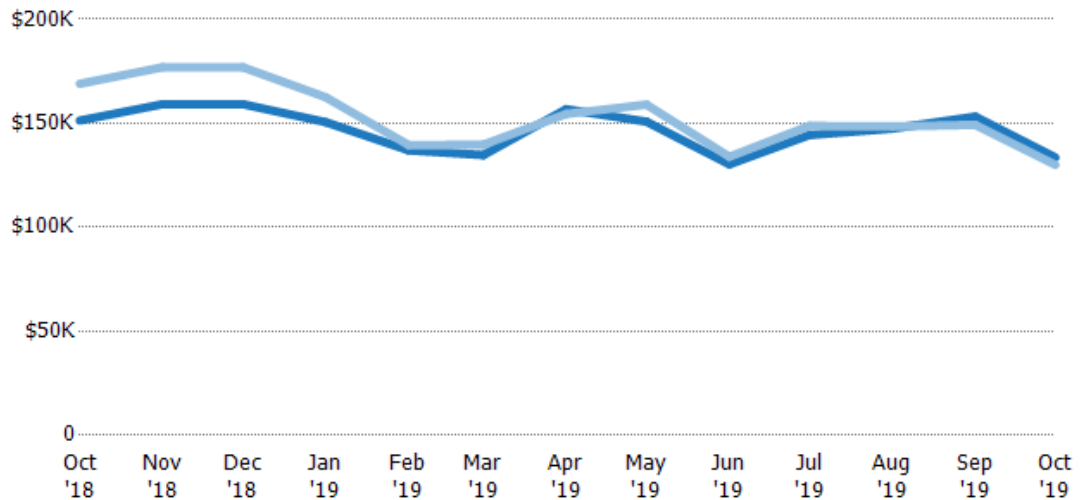
	Oct '18	Nov '18	Dec '18	Jan '19	Feb '19	Mar '19	Apr '19	May '19	Jun '19	Jul '19	Aug '19	Sep '19	Oct '19
Avg Est Value	\$179K	\$176K	\$167K	\$162K	\$153K	\$151K	\$179K	\$181K	\$188K	\$190K	\$207K	\$215K	\$207K
Avg Listing Price	\$201K	\$204K	\$196K	\$189K	\$170K	\$160K	\$180K	\$191K	\$194K	\$197K	\$212K	\$219K	\$209K
Avg Listing Price as a % of Avg Est Value	112%	116%	117%	117%	111%	106%	101%	105%	103%	104%	102%	102%	101%

## Median Listing Price vs Median Est Value

The median listing price as a percentage of the median AVM or RVM® valuation estimate for active listings each month.

### Filters Used

ZIP: Saint Johnsbury, VT 05819,  
East Saint Johnsbury, VT 05838,  
Saint Johnsbury Center, VT 05863  
Property Type:  
Condo/Townhouse/Apt, Single  
Family Residence



	Oct '18	Nov '18	Dec '18	Jan '19	Feb '19	Mar '19	Apr '19	May '19	Jun '19	Jul '19	Aug '19	Sep '19	Oct '19
Median Est Value	\$151K	\$159K	\$159K	\$151K	\$137K	\$135K	\$157K	\$151K	\$130K	\$144K	\$147K	\$153K	\$134K
Median Listing Price	\$169K	\$177K	\$177K	\$163K	\$140K	\$140K	\$155K	\$159K	\$134K	\$149K	\$149K	\$149K	\$130K
Med Listing Price as a % of Med Est Value	112%	111%	111%	108%	102%	104%	99%	105%	103%	103%	101%	97%	97%

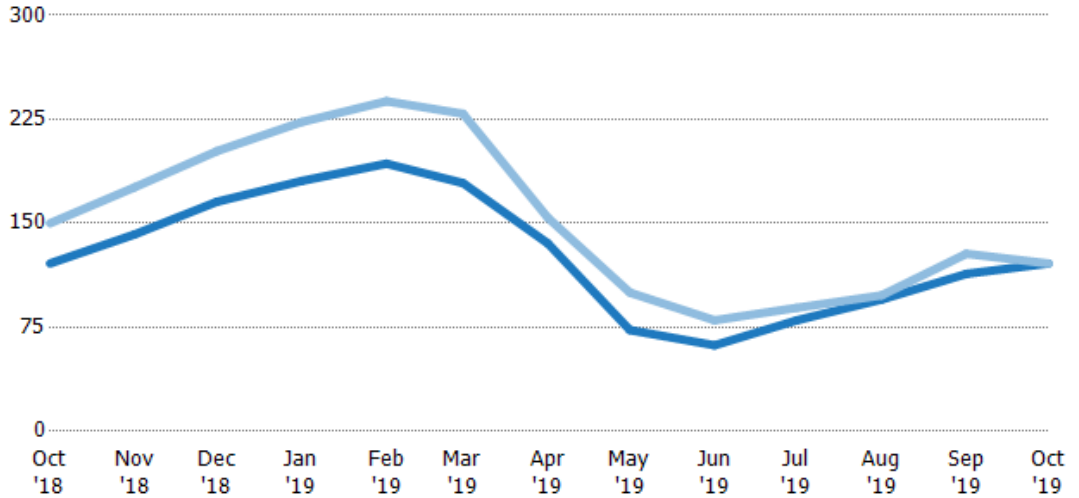
## Median Days in RPR

The median number of days between when residential properties are first displayed as active listings in RPR and when accepted offers have been noted in RPR.

### Filters Used

ZIP: Saint Johnsbury, VT 05819,  
East Saint Johnsbury, VT 05838,  
Saint Johnsbury Center, VT 05863  
Property Type:  
Condo/Townhouse/Apt, Single  
Family Residence

Month/Year	Days	% Chg.
Oct '19	121	0%
Oct '18	121	-19.3%
Oct '17	150	-4.7%



	Oct '18	Nov '18	Dec '18	Jan '19	Feb '19	Mar '19	Apr '19	May '19	Jun '19	Jul '19	Aug '19	Sep '19	Oct '19
Current Year	121	142	166	181	193	179	136	73	62	80	95	114	121
Prior Year	150	176	202	223	238	229	154	100	80	89	98	128	121
Percent Change from Prior Year	-19%	-19%	-18%	-19%	-19%	-22%	-12%	-27%	-23%	-10%	-3%	-11%	0%

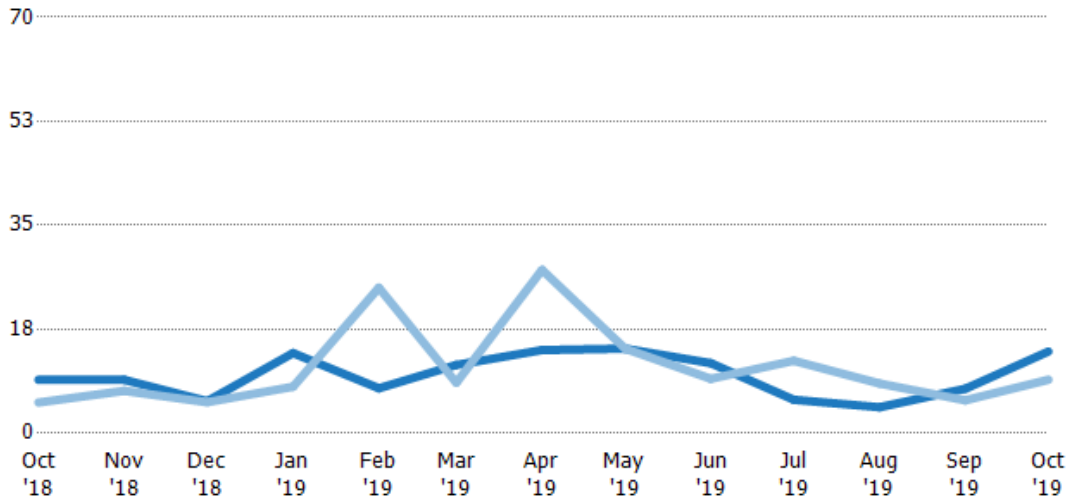
## Months of Inventory

The number of months it would take to exhaust active listings at the current sales rate.

### Filters Used

ZIP: Saint Johnsbury, VT 05819,  
East Saint Johnsbury, VT 05838,  
Saint Johnsbury Center, VT 05863  
Property Type:  
Condo/Townhouse/Apt, Single  
Family Residence

Month/Year	Months	% Chg.
Oct '19	13.8	52.8%
Oct '18	9	73.7%
Oct '17	5.18	1,115.8%



	Oct '18	Nov '18	Dec '18	Jan '19	Feb '19	Mar '19	Apr '19	May '19	Jun '19	Jul '19	Aug '19	Sep '19	Oct '19
Current Year	9	9	5.4	13.5	7.57	11.5	14	14.3	11.8	5.64	4.38	7.5	13.8
Prior Year	5.18	7.14	5.22	7.83	24.5	8.5	27.5	14.3	9.17	12.2	8.38	5.55	9
Percent Change from Prior Year	74%	26%	3%	72%	-69%	35%	-49%	0%	29%	-54%	-48%	35%	53%

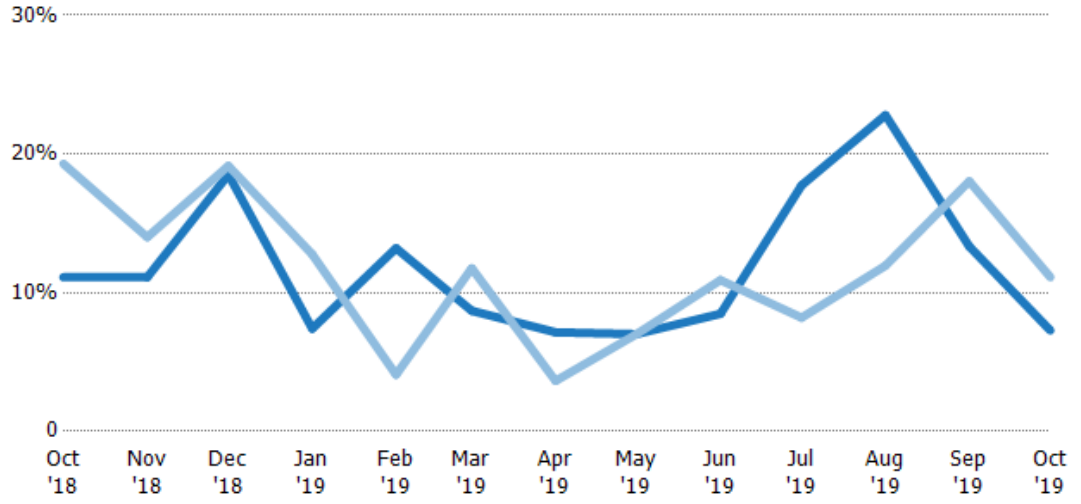
## Absorption Rate

The percentage of inventory sold per month.

### Filters Used

ZIP: Saint Johnsbury, VT 05819,  
East Saint Johnsbury, VT 05838,  
Saint Johnsbury Center, VT 05863  
Property Type:  
Condo/Townhouse/Apt, Single  
Family Residence

Month/ Year	Rate	Chg.
Oct '19	7%	3.8%
Oct '18	11%	8.2%
Oct '17	19%	-91.8%



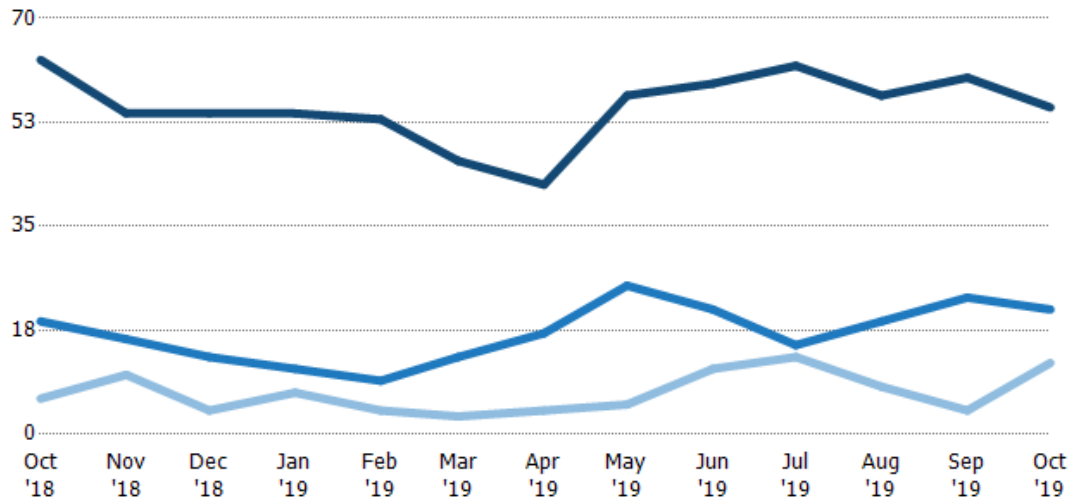
	Oct '18	Nov '18	Dec '18	Jan '19	Feb '19	Mar '19	Apr '19	May '19	Jun '19	Jul '19	Aug '19	Sep '19	Oct '19
Current Year	11%	11%	19%	7%	13%	9%	7%	7%	8%	18%	23%	13%	7%
Prior Year	19%	14%	19%	13%	4%	12%	4%	7%	11%	8%	12%	18%	11%
Change from Prior Year	8%	3%	1%	5%	-9%	3%	-4%	0%	2%	-10%	-11%	5%	4%

## Active/Pending/Sold Units

The number of residential properties that were Active, Pending and Sold each month.

### Filters Used

ZIP: Saint Johnsbury, VT 05819,  
East Saint Johnsbury, VT 05838,  
Saint Johnsbury Center, VT 05863  
Property Type:  
Condo/Townhouse/Apt, Single  
Family Residence



	Oct '18	Nov '18	Dec '18	Jan '19	Feb '19	Mar '19	Apr '19	May '19	Jun '19	Jul '19	Aug '19	Sep '19	Oct '19
Active	63	54	54	54	53	46	42	57	59	62	57	60	55
Pending	19	16	13	11	9	13	17	25	21	15	19	23	21
Sold	6	10	4	7	4	3	4	5	11	13	8	4	12

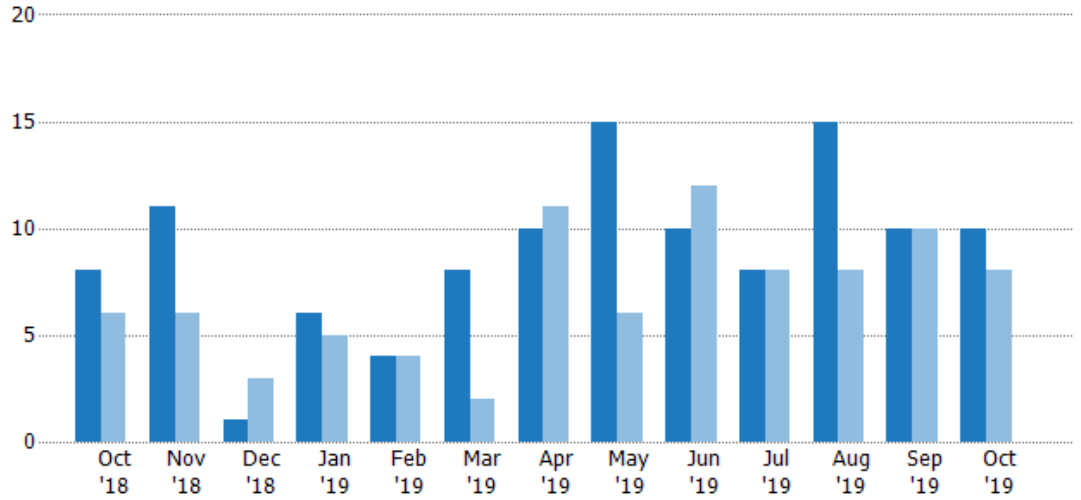
## New Pending Sales

The number of residential properties with accepted offers that were added each month.

### Filters Used

ZIP: Saint Johnsbury, VT 05819,  
East Saint Johnsbury, VT 05838,  
Saint Johnsbury Center, VT 05863  
Property Type:  
Condo/Townhouse/Apt, Single  
Family Residence

Month/Year	Count	% Chg.
Oct '19	10	25%
Oct '18	8	33.3%
Oct '17	6	-16.7%



Current Year	8	11	1	6	4	8	10	15	10	8	15	10	10
Prior Year	6	6	3	5	4	2	11	6	12	8	8	10	8
Percent Change from Prior Year	33%	83%	-67%	20%	0%	300%	-9%	150%	-17%	0%	88%	0%	25%

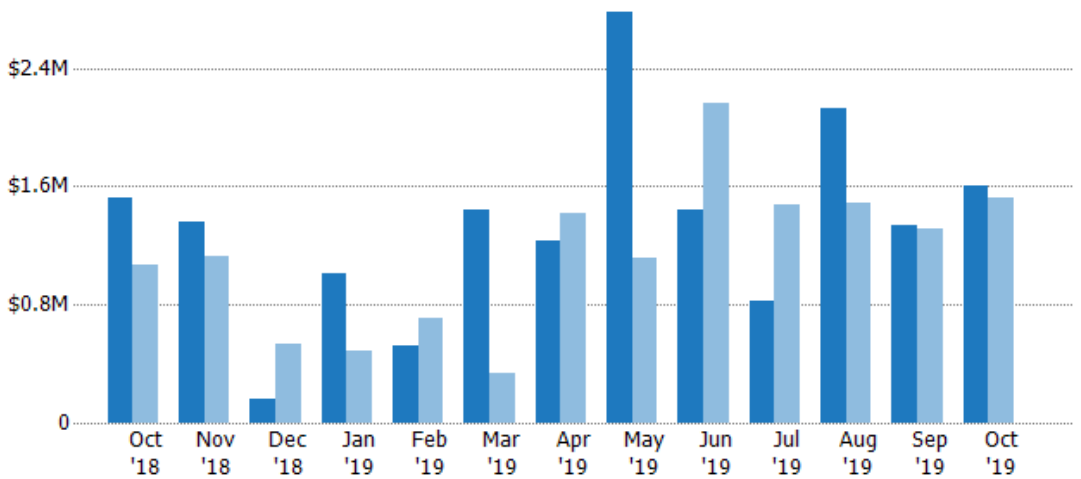
## New Pending Sales Volume

The sum of the sales price of residential properties with accepted offers that were added each month.

### Filters Used

ZIP: Saint Johnsbury, VT 05819,  
East Saint Johnsbury, VT 05838,  
Saint Johnsbury Center, VT 05863  
Property Type:  
Condo/Townhouse/Apt, Single  
Family Residence

Month/Year	Volume	% Chg.
Oct '19	\$1.61M	6.1%
Oct '18	\$1.52M	41.8%
Oct '17	\$1.07M	4.3%



Current Year	\$1.52M	\$1.36M	\$158K	\$1.01M	\$524K	\$1.44M	\$1.23M	\$2.77M	\$1.44M	\$826K	\$2.13M	\$1.34M	\$1.61M
Prior Year	\$1.07M	\$1.13M	\$538K	\$491K	\$708K	\$332K	\$1.42M	\$1.11M	\$2.16M	\$1.48M	\$1.48M	\$1.32M	\$1.52M
Percent Change from Prior Year	42%	20%	-71%	105%	-26%	335%	-13%	150%	-33%	-44%	44%	2%	6%



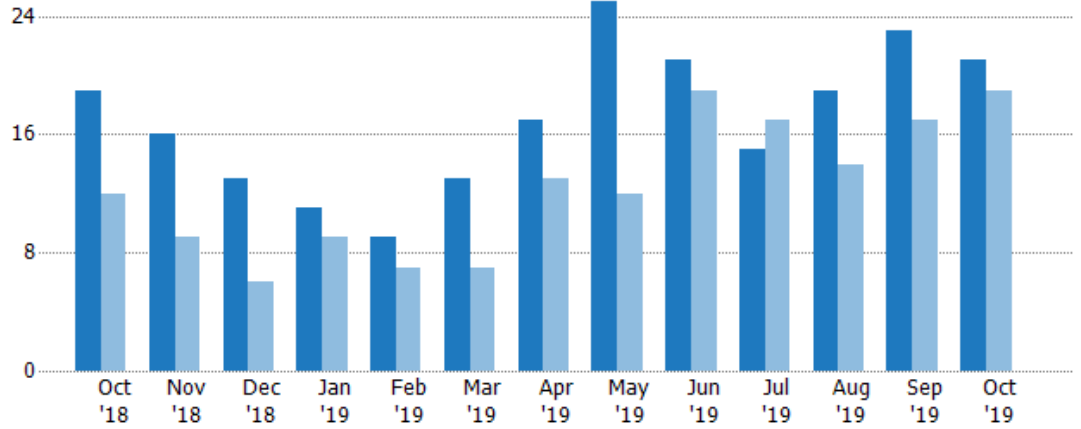
## Pending Sales

The number of residential properties with accepted offers that were available at the end each month.

### Filters Used

ZIP: Saint Johnsbury, VT 05819,  
East Saint Johnsbury, VT 05838,  
Saint Johnsbury Center, VT 05863  
Property Type:  
Condo/Townhouse/Apt, Single  
Family Residence

Month/ Year	Count	% Chg.
Oct '19	21	10.5%
Oct '18	19	58.3%
Oct '17	12	25%



Current Year	19	16	13	11	9	13	17	25	21	15	19	23	21
Prior Year	12	9	6	9	7	7	13	12	19	17	14	17	19
Percent Change from Prior Year	58%	78%	117%	22%	29%	86%	31%	108%	11%	-12%	36%	35%	11%

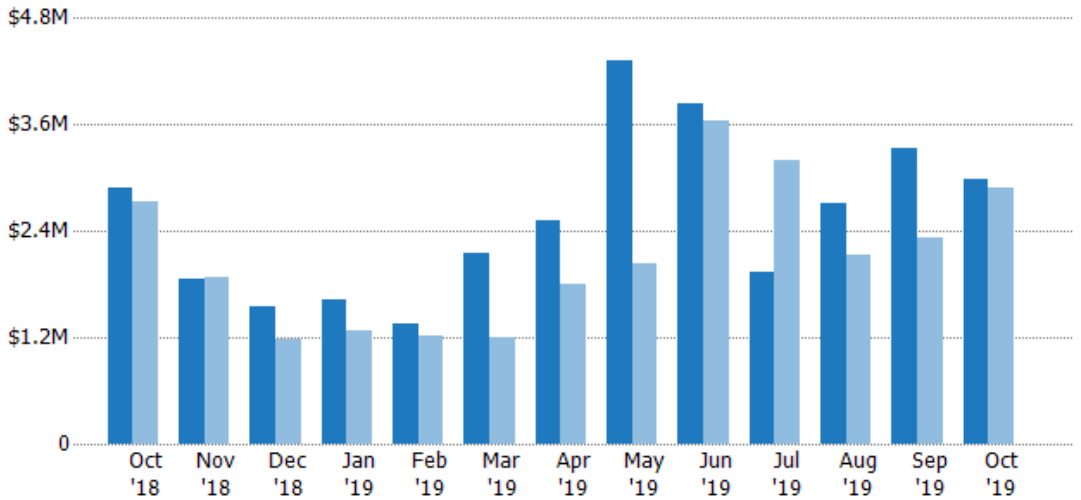
## Pending Sales Volume

The sum of the sales price of residential properties with accepted offers that were available at the end of each month.

### Filters Used

ZIP: Saint Johnsbury, VT 05819,  
East Saint Johnsbury, VT 05838,  
Saint Johnsbury Center, VT 05863  
Property Type:  
Condo/Townhouse/Apt, Single  
Family Residence

Month/ Year	Volume	% Chg.
Oct '19	\$2.98M	3.5%
Oct '18	\$2.88M	5.1%
Oct '17	\$2.74M	-9.3%



Current Year	\$2.88M	\$1.86M	\$1.54M	\$1.62M	\$1.35M	\$2.15M	\$2.51M	\$4.33M	\$3.84M	\$1.94M	\$2.71M	\$3.34M	\$2.98M
Prior Year	\$2.74M	\$1.88M	\$1.18M	\$1.28M	\$1.22M	\$1.19M	\$1.8M	\$2.03M	\$3.64M	\$3.2M	\$2.13M	\$2.32M	\$2.88M
Percent Change from Prior Year	5%	-2%	31%	27%	10%	81%	39%	114%	6%	-40%	27%	44%	3%

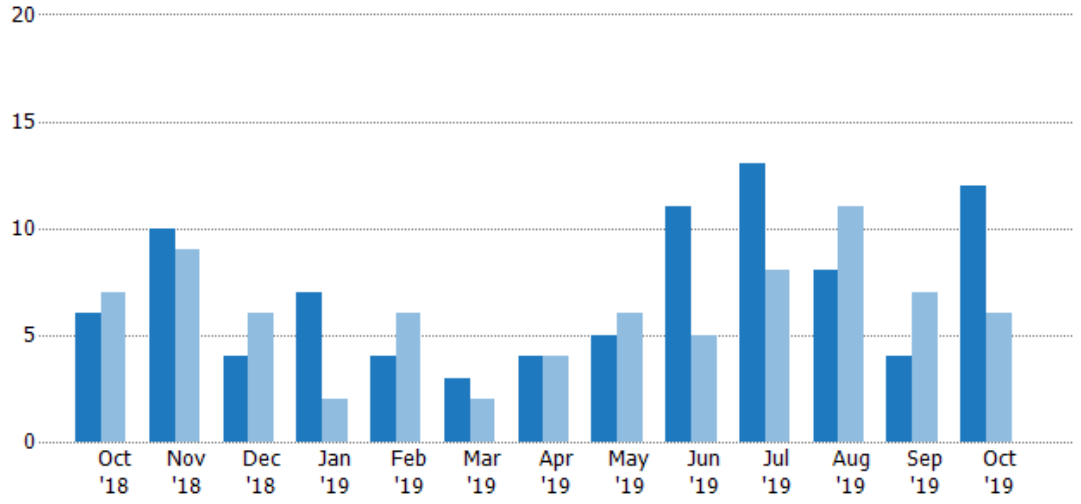
## Closed Sales

The total number of residential properties sold each month.

### Filters Used

ZIP: Saint Johnsbury, VT 05819,  
East Saint Johnsbury, VT 05838,  
Saint Johnsbury Center, VT 05863  
Property Type:  
Condo/Townhouse/Apt, Single  
Family Residence

Month/Year	Count	% Chg.
Oct '19	12	100%
Oct '18	6	-14.3%
Oct '17	7	42.9%



Current Year	6	10	4	7	4	3	4	5	11	13	8	4	12
Prior Year	7	9	6	2	6	2	4	6	5	8	11	7	6
Percent Change from Prior Year	-14%	11%	-33%	250%	-33%	50%	0%	-17%	120%	63%	-27%	-43%	100%

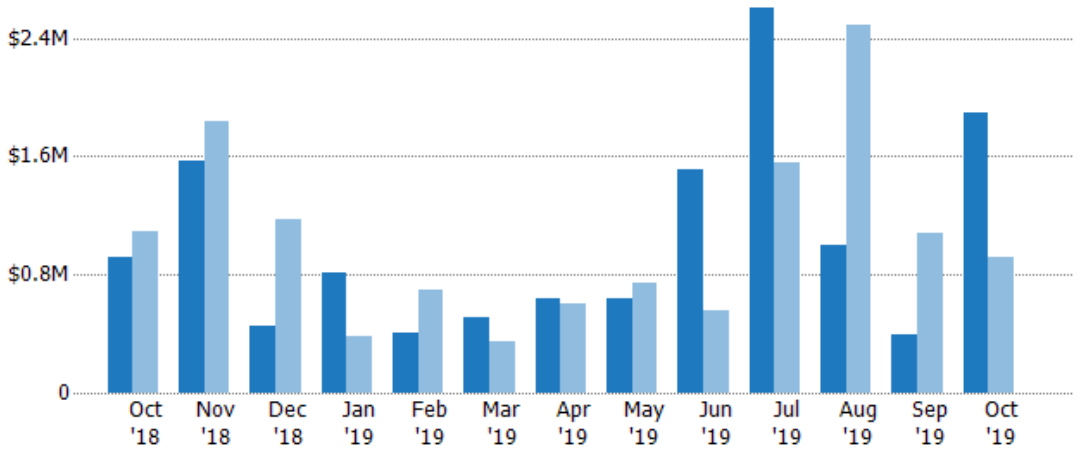
## Closed Sales Volume

The sum of the sales price of residential properties sold each month.

### Filters Used

ZIP: Saint Johnsbury, VT 05819,  
East Saint Johnsbury, VT 05838,  
Saint Johnsbury Center, VT 05863  
Property Type:  
Condo/Townhouse/Apt, Single  
Family Residence

Month/Year	Volume	% Chg.
Oct '19	\$1.89M	106.9%
Oct '18	\$914K	-16.2%
Oct '17	\$1.09M	-6.9%



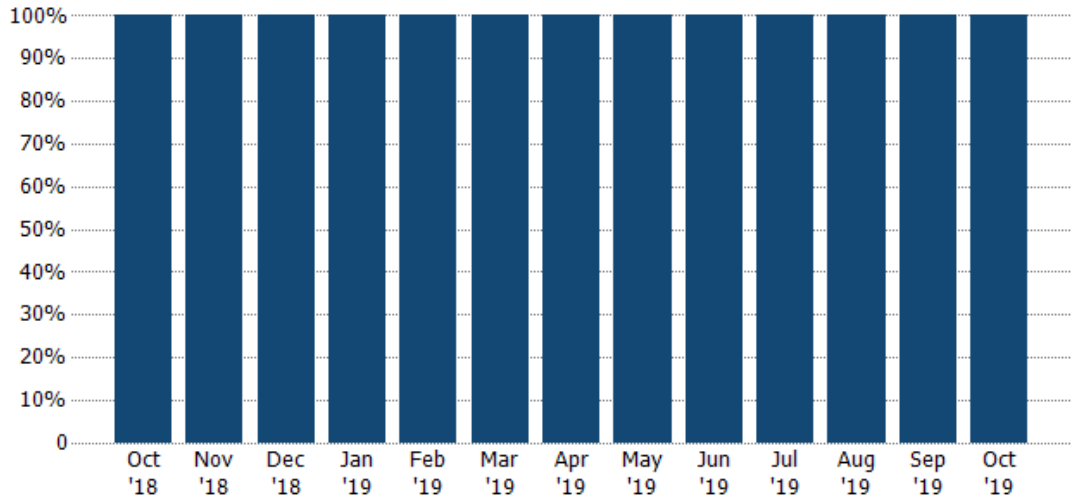
Current Year	\$914K	\$1.57M	\$452K	\$815K	\$409K	\$514K	\$639K	\$640K	\$1.51M	\$2.6M	\$995K	\$396K	\$1.89M
Prior Year	\$1.09M	\$1.84M	\$1.17M	\$383K	\$700K	\$343K	\$599K	\$741K	\$553K	\$1.56M	\$2.49M	\$1.08M	\$914K
Percent Change from Prior Year	-16%	-14%	-61%	113%	-42%	50%	7%	-14%	174%	67%	-60%	-63%	107%

## Closed Sales by Property Type

The percentage of residential properties sold each month by property type.

### Filters Used

ZIP: Saint Johnsbury, VT 05819,  
East Saint Johnsbury, VT 05838,  
Saint Johnsbury Center, VT 05863  
Property Type:  
Condo/Townhouse/Apt, Single  
Family Residence



Single Family Residence

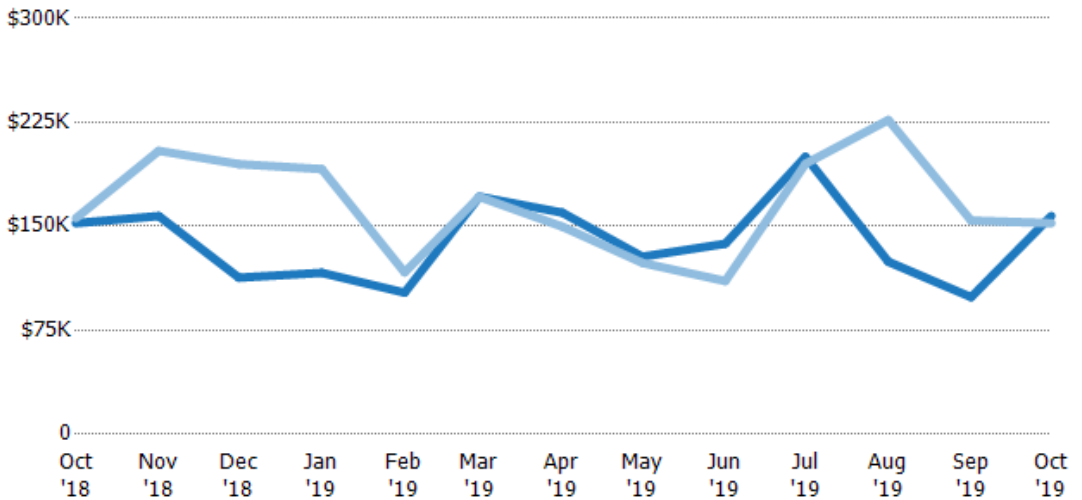
100% 100% 100% 100% 100% 100% 100% 100% 100% 100% 100% 100% 100%

## Average Sales Price

The average sales price of the residential properties sold each month.

### Filters Used

ZIP: Saint Johnsbury, VT 05819,  
East Saint Johnsbury, VT 05838,  
Saint Johnsbury Center, VT 05863  
Property Type:  
Condo/Townhouse/Apt, Single  
Family Residence



Current Year

\$152K \$157K \$113K \$116K \$102K \$171K \$160K \$128K \$137K \$200K \$124K \$98.9K \$158K

Prior Year

\$156K \$204K \$195K \$191K \$117K \$171K \$150K \$124K \$111K \$195K \$227K \$154K \$152K

Percent Change from Prior Year

-2% -23% -42% -39% -13% 0% 7% 4% 24% 3% -45% -36% 3%

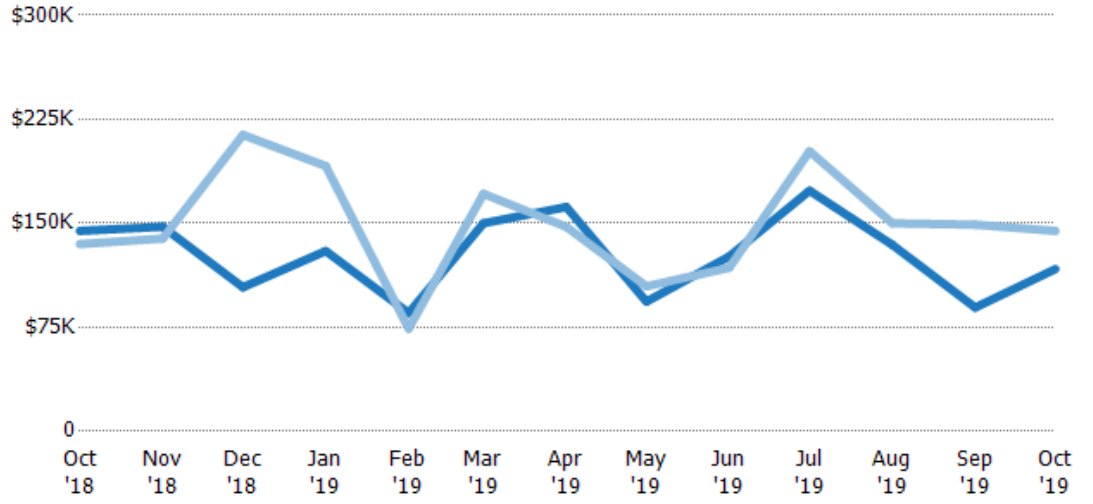
## Median Sales Price

The median sales price of the residential properties sold each month.

### Filters Used

ZIP: Saint Johnsbury, VT 05819,  
East Saint Johnsbury, VT 05838,  
Saint Johnsbury Center, VT 05863  
Property Type:  
Condo/Townhouse/Apt, Single  
Family Residence

Month/ Year	Price	% Chg.
Oct '19	\$117K	-19%
Oct '18	\$145K	7%
Oct '17	\$135K	-25.2%



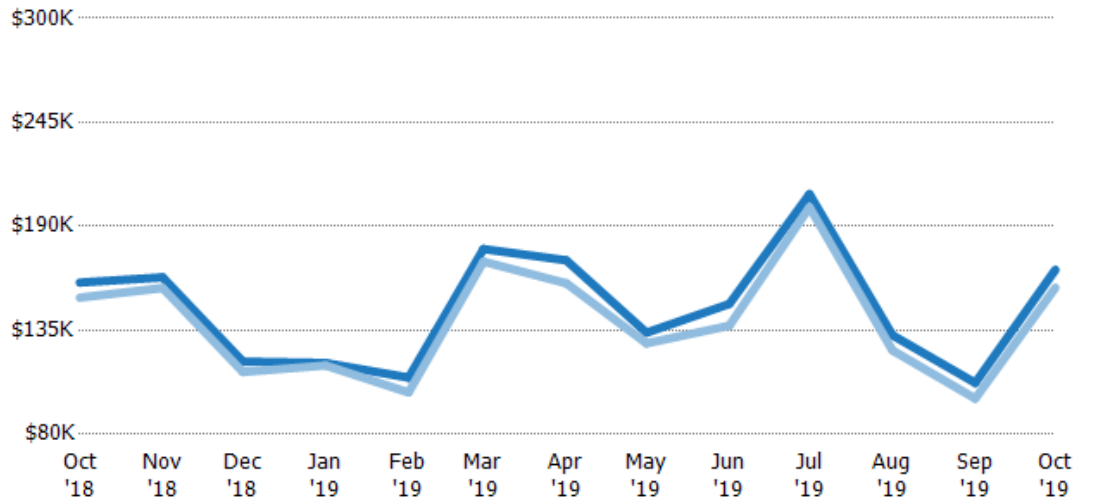
Current Year	\$145K	\$148K	\$104K	\$130K	\$85.3K	\$150K	\$162K	\$93.5K	\$126K	\$174K	\$134K	\$89.3K	\$117K
Prior Year	\$135K	\$139K	\$214K	\$191K	\$74.1K	\$171K	\$147K	\$105K	\$118K	\$202K	\$150K	\$149K	\$145K
Percent Change from Prior Year	7%	6%	-51%	-32%	15%	-12%	10%	-11%	7%	-14%	-10%	-40%	-19%

## Average Sales Price vs Average Listing Price

The average sales price as a percentage of the average listing price for properties sold each month.

### Filters Used

ZIP: Saint Johnsbury, VT 05819,  
East Saint Johnsbury, VT 05838,  
Saint Johnsbury Center, VT 05863  
Property Type:  
Condo/Townhouse/Apt, Single  
Family Residence



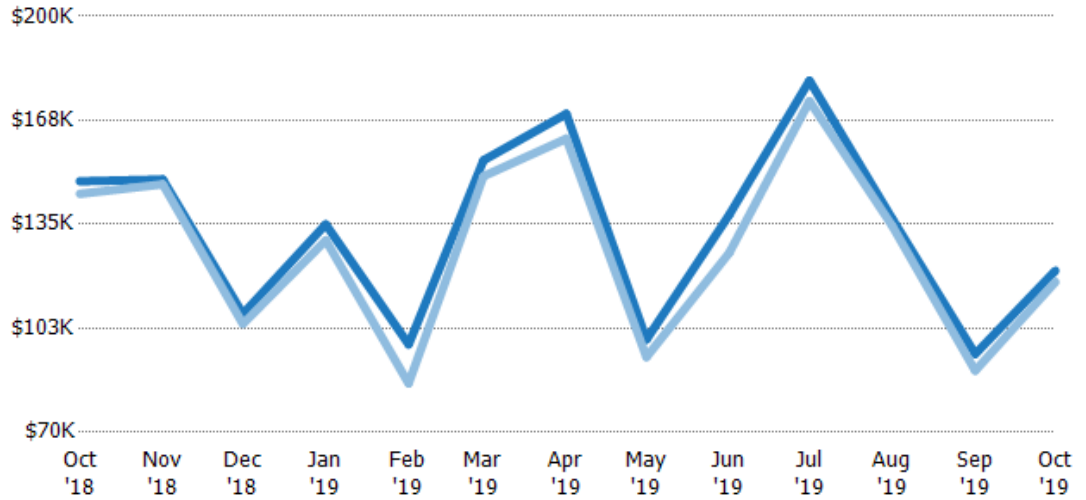
Avg List Price	\$160K	\$163K	\$118K	\$118K	\$110K	\$178K	\$172K	\$134K	\$149K	\$207K	\$132K	\$107K	\$167K
Avg Sales Price	\$152K	\$157K	\$113K	\$116K	\$102K	\$171K	\$160K	\$128K	\$137K	\$200K	\$124K	\$98.9K	\$158K
Avg Sales Price as a % of Avg List Price	95%	97%	95%	99%	93%	96%	93%	96%	92%	97%	94%	92%	94%

## Median Sales Price vs Median Listing Price

The median sales price as a percentage of the median listing price for properties sold each month.

### Filters Used

ZIP: Saint Johnsbury, VT 05819,  
East Saint Johnsbury, VT 05838,  
Saint Johnsbury Center, VT 05863  
Property Type:  
Condo/Townhouse/Apt, Single  
Family Residence



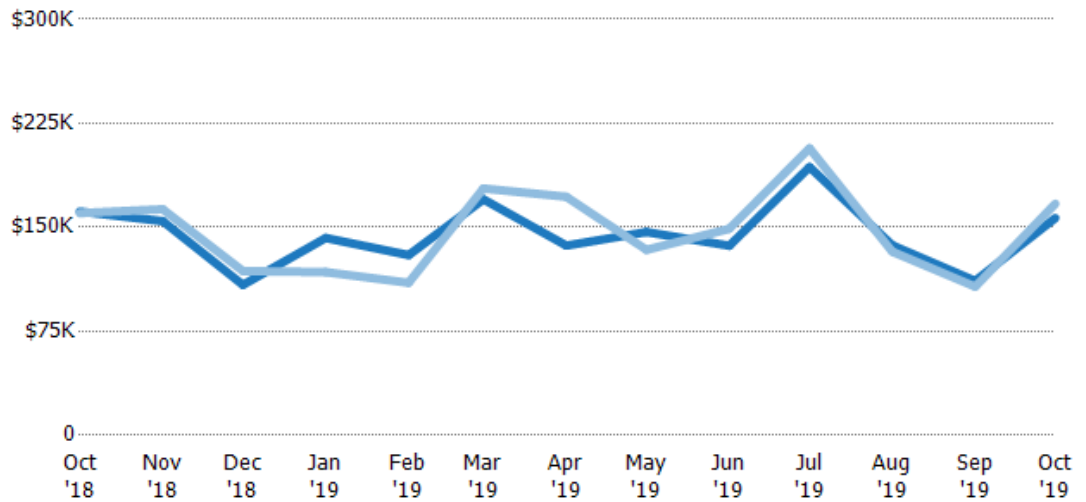
Month	Median List Price	Median Sales Price	Med Sales Price as a % of Med List Price
Oct '18	\$148K	\$145K	97%
Nov '18	\$149K	\$148K	99%
Dec '18	\$107K	\$104K	97%
Jan '19	\$135K	\$130K	96%
Feb '19	\$97.5K	\$85.3K	87%
Mar '19	\$155K	\$150K	97%
Apr '19	\$170K	\$162K	95%
May '19	\$99K	\$93.5K	94%
Jun '19	\$138K	\$126K	91%
Jul '19	\$180K	\$174K	96%
Aug '19	\$137K	\$134K	98%
Sep '19	\$94.5K	\$89.3K	94%
Oct '19	\$121K	\$117K	97%

## Average Sales Price vs Average Est Value

The average sales price as a percentage of the average AVM or RVM® valuation estimate for properties sold each month.

### Filters Used

ZIP: Saint Johnsbury, VT 05819,  
East Saint Johnsbury, VT 05838,  
Saint Johnsbury Center, VT 05863  
Property Type:  
Condo/Townhouse/Apt, Single  
Family Residence



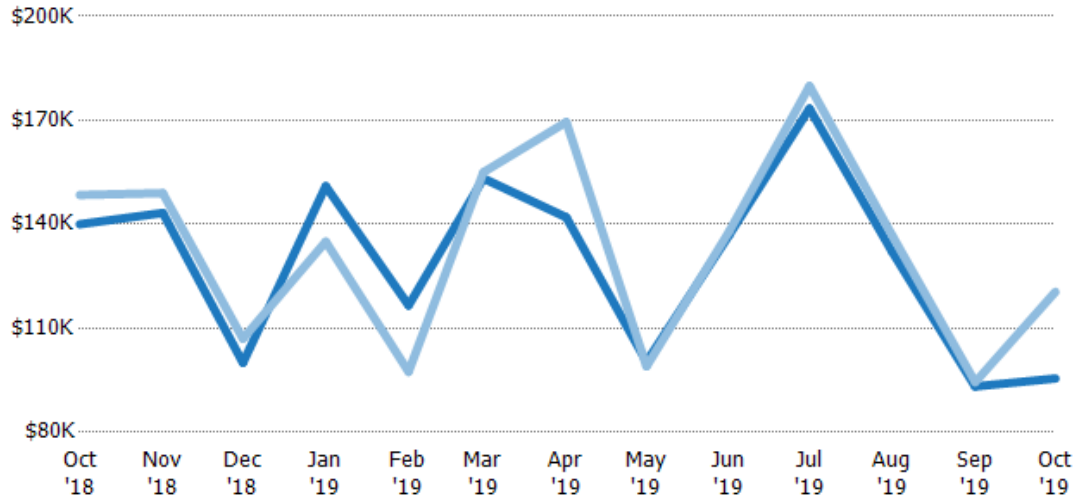
Month	Avg Est Value	Avg Sales Price	Avg Sales Price as a % of Avg Est Value
Oct '18	\$161K	\$160K	99%
Nov '18	\$154K	\$163K	106%
Dec '18	\$108K	\$118K	109%
Jan '19	\$142K	\$118K	83%
Feb '19	\$130K	\$110K	85%
Mar '19	\$170K	\$178K	105%
Apr '19	\$137K	\$172K	126%
May '19	\$147K	\$134K	91%
Jun '19	\$137K	\$149K	109%
Jul '19	\$193K	\$207K	107%
Aug '19	\$137K	\$132K	97%
Sep '19	\$111K	\$107K	96%
Oct '19	\$157K	\$167K	107%

## Median Sales Price vs Median Est Value

The median sales price as a percent of the median AVM or RVM® valuation estimate for properties sold each month.

### Filters Used

ZIP: Saint Johnsbury, VT 05819,  
 East Saint Johnsbury, VT 05838,  
 Saint Johnsbury Center, VT 05863  
 Property Type:  
 Condo/Townhouse/Apt, Single  
 Family Residence



	Oct '18	Nov '18	Dec '18	Jan '19	Feb '19	Mar '19	Apr '19	May '19	Jun '19	Jul '19	Aug '19	Sep '19	Oct '19
Median Est Value	\$140K	\$143K	\$100K	\$151K	\$117K	\$153K	\$142K	\$100K	\$137K	\$173K	\$132K	\$93.2K	\$95.5K
Median Sales Price	\$148K	\$149K	\$107K	\$135K	\$97.5K	\$155K	\$170K	\$99K	\$138K	\$180K	\$137K	\$94.5K	\$121K
Med Sales Price as a % of Med Est Value	106%	104%	107%	89%	84%	101%	119%	99%	101%	104%	104%	101%	126%