

## Summary of Key Listing and Sales Metrics

A summary of the key metrics selected to be included in the report. MLS sources where licensed.

Key Metrics	Nov 2019	Nov 2018	+ / -	YTD 2019	YTD 2018	+ / -
<b>Listing Activity Charts Metrics</b>						
New Listing Count	6	7	-14.3%	200	176	+13.6%
New Listing Volume	\$1,108,800	\$1,974,700	-43.8%	\$73,362,572	\$65,062,849	+12.8%
Active Listing Count	51	50	+2%	N/A	N/A	
Active Listing Volume	\$24,795,790	\$25,483,500	-2.7%	N/A	N/A	
Average Listing Price	\$486,192	\$509,670	-4.6%	\$550,823	\$519,263	+6.1%
Median Listing Price	\$259,000	\$324,000	-20.1%	\$330,416	\$338,511	-2.4%
Median Days in RPR	92	114.5	-19.7%	87.69	82.55	+6.2%
Months of Inventory	4.3	3.8	+10.5%	4.8	4.3	+11.7%
Absorption Rate	23.53%	26%	-2.5%	20.97%	23.42%	-2.5%
<b>Sales Activity Charts Metrics</b>						
New Pending Sales Count	12	6	+100%	171	153	+11.8%
New Pending Sales Volume	\$3,186,500	\$1,845,900	+72.6%	\$52,401,188	\$52,890,648	-0.9%
Pending Sales Count	18	10	+80%	N/A	N/A	
Pending Sales Volume	\$5,674,600	\$3,281,800	+72.9%	N/A	N/A	
Closed Sales Count	13	7	+85.7%	132	138	-4.3%
Closed Sales Volume	\$4,626,050	\$1,672,900	+176.5%	\$39,947,751	\$45,879,449	-12.9%
Average Sales Price	\$355,850	\$238,986	+48.9%	\$302,634	\$332,460	-9%
Median Sales Price	\$271,500	\$210,000	+29.3%	\$248,061	\$247,483	+0.2%

## New Listings

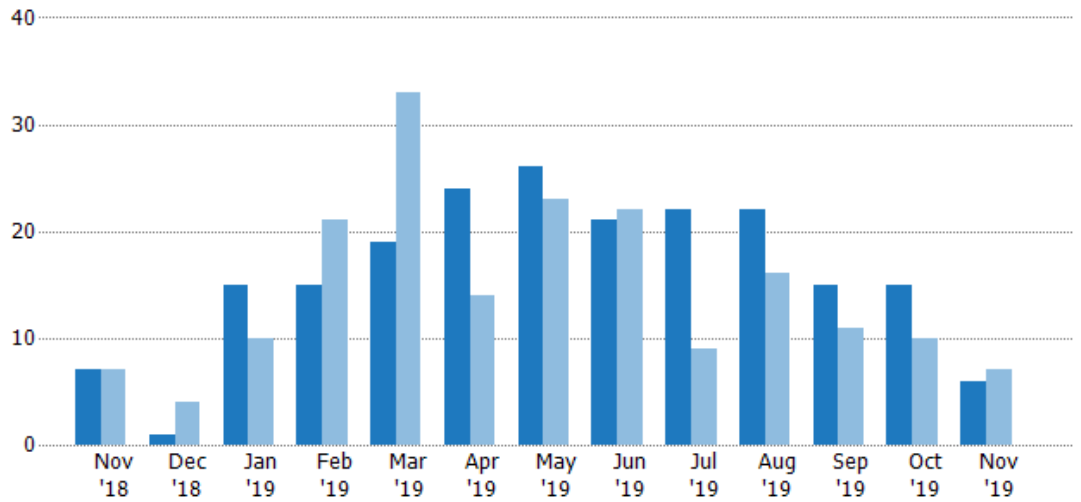
The number of new residential listings that were added each month.

### Filters Used

ZIP: White River Junction, VT 05001, East Thetford, VT 05043, Norwich, VT 05055, Sharon, VT 05065

Property Type: Condo/Townhouse/Apt, Single Family Residence

Month/Year	Count	% Chg.
Nov '19	6	-14.3%
Nov '18	7	0%
Nov '17	7	0%



Current Year	7	1	15	15	19	24	26	21	22	22	15	15	6
Prior Year	7	4	10	21	33	14	23	22	9	16	11	10	7
Percent Change from Prior Year	0%	-75%	50%	-29%	-42%	71%	13%	-5%	144%	38%	36%	50%	-14%

## New Listing Volume

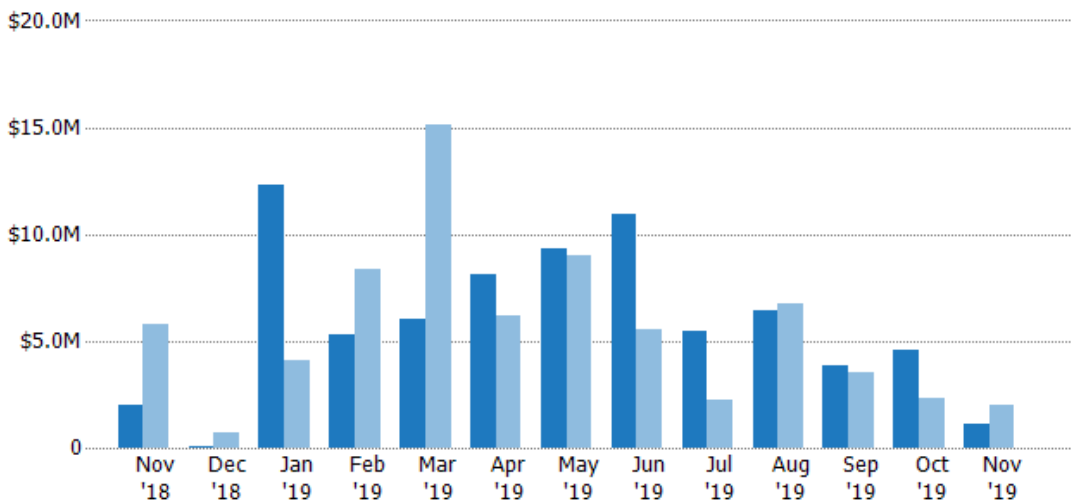
The sum of the listing price of residential listings that were added each month.

### Filters Used

ZIP: White River Junction, VT 05001, East Thetford, VT 05043, Norwich, VT 05055, Sharon, VT 05065

Property Type: Condo/Townhouse/Apt, Single Family Residence

Month/Year	Volume	% Chg.
Nov '19	\$1.11M	-43.8%
Nov '18	\$1.97M	-65.8%
Nov '17	\$5.77M	-69.5%



Current Year	\$1.97M	\$56.5K	\$12.3M	\$5.28M	\$6.02M	\$8.12M	\$9.33M	\$10.9M	\$5.47M	\$6.41M	\$3.83M	\$4.58M	\$1.11M
Prior Year	\$5.77M	\$707K	\$4.13M	\$8.32M	\$15.1M	\$6.16M	\$8.99M	\$5.52M	\$2.27M	\$6.72M	\$3.52M	\$2.31M	\$1.97M
Percent Change from Prior Year	-66%	-92%	198%	-37%	-60%	32%	4%	98%	140%	-5%	9%	98%	-44%

## Active Listings

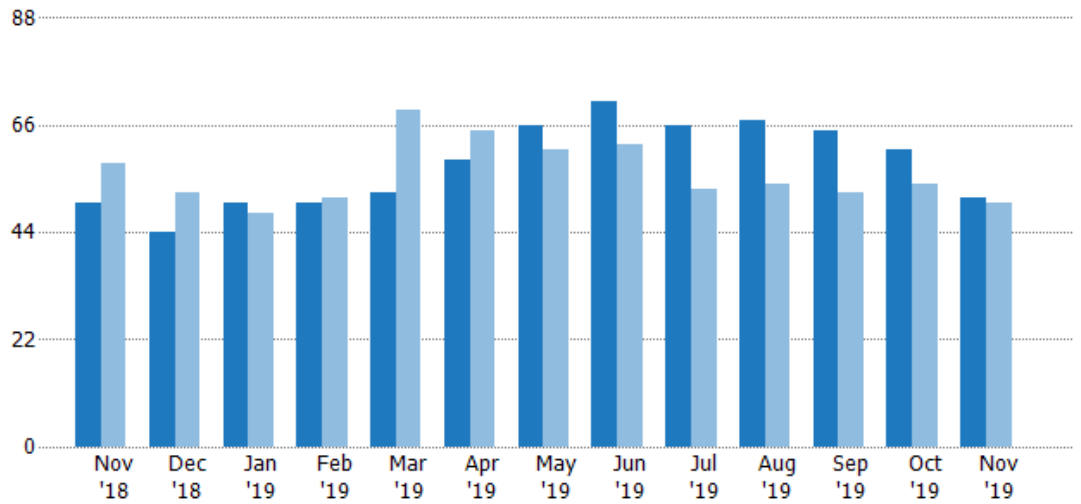
The number of active residential listings at the end of each month.

### Filters Used

ZIP: White River Junction, VT 05001, East Thetford, VT 05043, Norwich, VT 05055, Sharon, VT 05065

Property Type: Condo/Townhouse/Apt, Single Family Residence

Month/Year	Count	% Chg.
Nov '19	51	2%
Nov '18	50	-13.8%
Nov '17	58	39.7%



Current Year	50	44	50	50	52	59	66	71	66	67	65	61	51
Prior Year	58	52	48	51	69	65	61	62	53	54	52	54	50
Percent Change from Prior Year	-14%	-15%	4%	-2%	-25%	-9%	8%	15%	25%	24%	25%	13%	2%

## Active Listing Volume

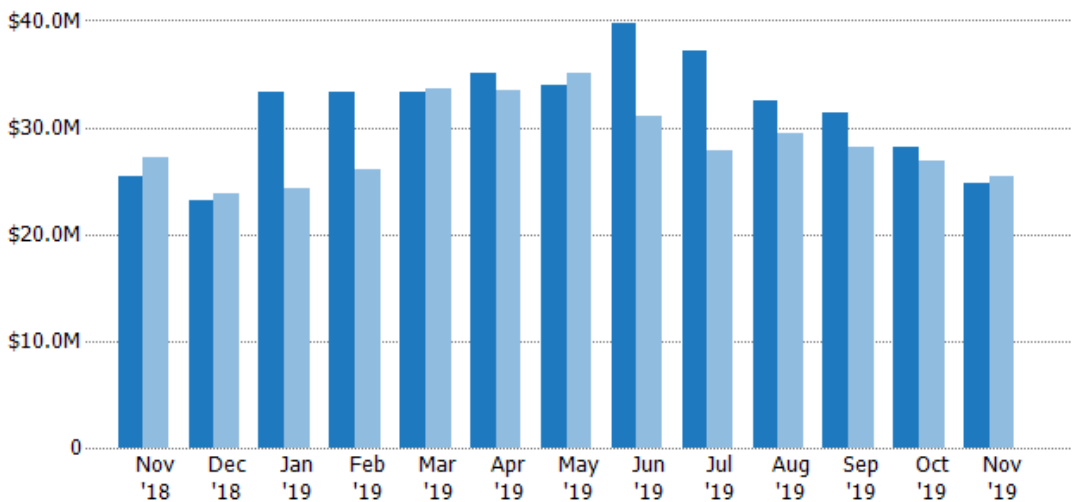
The sum of the listing price of active residential listings at the end of each month.

### Filters Used

ZIP: White River Junction, VT 05001, East Thetford, VT 05043, Norwich, VT 05055, Sharon, VT 05065

Property Type: Condo/Townhouse/Apt, Single Family Residence

Month/Year	Volume	% Chg.
Nov '19	\$24.8M	-2.7%
Nov '18	\$25.5M	-6.4%
Nov '17	\$27.2M	17.4%



Current Year	\$25.5M	\$23.2M	\$33.3M	\$33.3M	\$33.3M	\$35M	\$34M	\$39.7M	\$37.1M	\$32.4M	\$31.4M	\$28.2M	\$24.8M
Prior Year	\$27.2M	\$23.7M	\$24.2M	\$26.1M	\$33.6M	\$33.5M	\$35.2M	\$31.1M	\$27.9M	\$29.4M	\$28.2M	\$26.8M	\$25.5M
Percent Change from Prior Year	-6%	-2%	37%	28%	-1%	4%	-3%	28%	33%	10%	11%	5%	-3%

## Average Listing Price

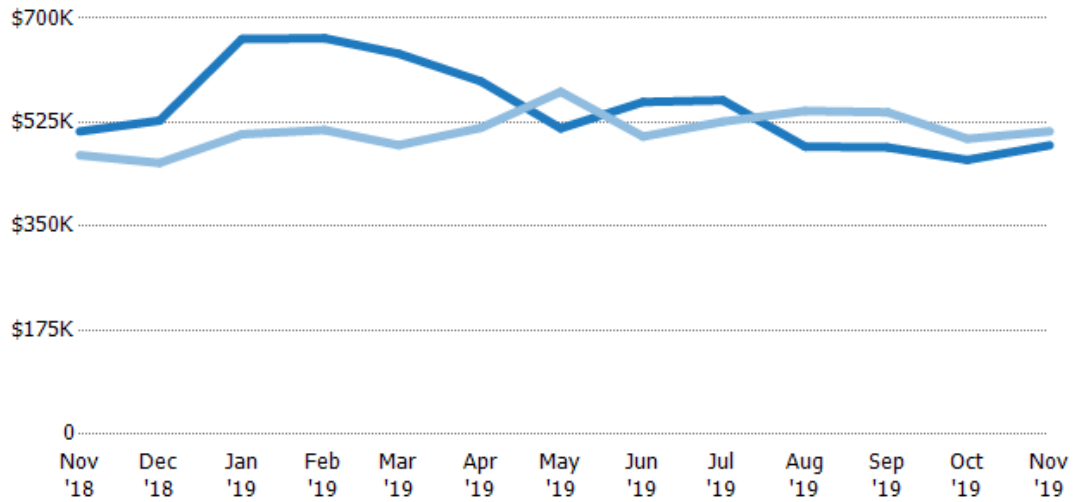
The average listing price of active residential listings at the end of each month.

### Filters Used

ZIP: White River Junction, VT 05001, East Thetford, VT 05043, Norwich, VT 05055, Sharon, VT 05065

Property Type: Condo/Townhouse/Apt, Single Family Residence

Month/Year	Price	% Chg.
Nov '19	\$486K	-4.6%
Nov '18	\$510K	8.5%
Nov '17	\$470K	-15.9%



Current Year	\$510K	\$528K	\$665K	\$666K	\$640K	\$594K	\$515K	\$559K	\$562K	\$484K	\$483K	\$462K	\$486K
Prior Year	\$470K	\$457K	\$505K	\$512K	\$487K	\$516K	\$576K	\$501K	\$526K	\$544K	\$542K	\$497K	\$510K
Percent Change from Prior Year	9%	16%	32%	30%	32%	15%	-11%	12%	7%	-11%	-11%	-7%	-5%

## Median Listing Price

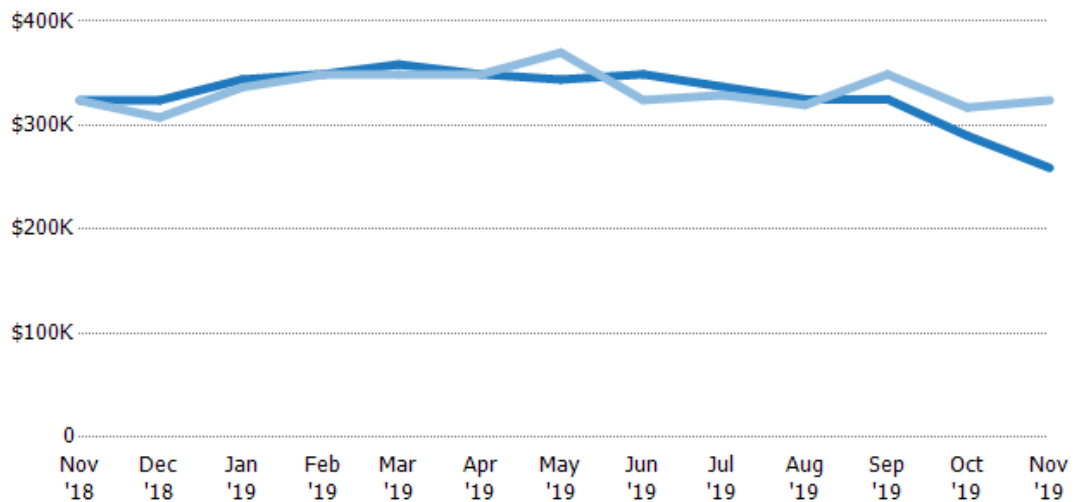
The median listing price of active residential listings at the end of each month.

### Filters Used

ZIP: White River Junction, VT 05001, East Thetford, VT 05043, Norwich, VT 05055, Sharon, VT 05065

Property Type: Condo/Townhouse/Apt, Single Family Residence

Month/Year	Price	% Chg.
Nov '19	\$259K	-20.1%
Nov '18	\$324K	0.1%
Nov '17	\$324K	-19.7%



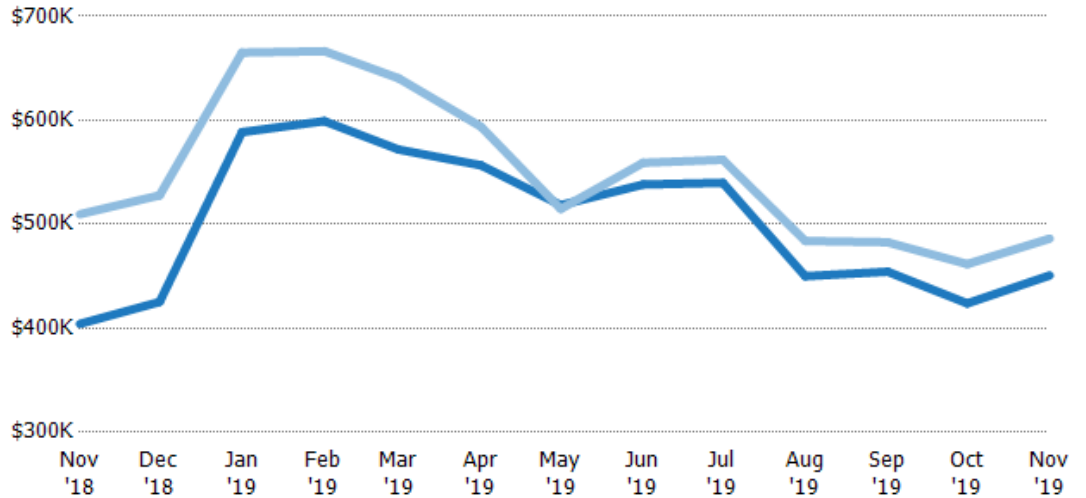
Current Year	\$324K	\$324K	\$344K	\$349K	\$359K	\$349K	\$344K	\$349K	\$337K	\$325K	\$325K	\$290K	\$259K
Prior Year	\$324K	\$307K	\$336K	\$349K	\$349K	\$349K	\$370K	\$324K	\$329K	\$320K	\$349K	\$317K	\$324K
Percent Change from Prior Year	0%	5%	2%	0%	3%	0%	-7%	8%	2%	2%	-7%	-9%	-20%

## Average Listing Price vs Average Est Value

The average listing price as a percentage of the average AVM or RVM® valuation estimate for active listings each month.

### Filters Used

ZIP: White River Junction, VT 05001, East Thetford, VT 05043, Norwich, VT 05055, Sharon, VT 05065  
 Property Type: Condo/Townhouse/Apt, Single Family Residence



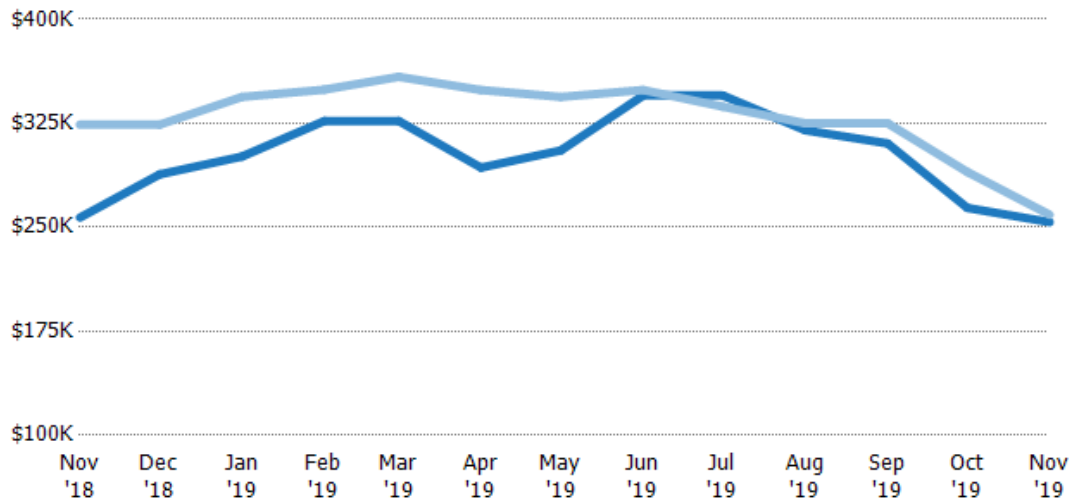
	Nov '18	Dec '18	Jan '19	Feb '19	Mar '19	Apr '19	May '19	Jun '19	Jul '19	Aug '19	Sep '19	Oct '19	Nov '19
Avg Est Value	\$404K	\$425K	\$589K	\$599K	\$572K	\$557K	\$518K	\$538K	\$540K	\$450K	\$454K	\$424K	\$451K
Avg Listing Price	\$510K	\$528K	\$665K	\$666K	\$640K	\$594K	\$515K	\$559K	\$562K	\$484K	\$483K	\$462K	\$486K
Avg Listing Price as a % of Avg Est Value	126%	124%	113%	111%	112%	107%	99%	104%	104%	108%	106%	109%	108%

## Median Listing Price vs Median Est Value

The median listing price as a percentage of the median AVM or RVM® valuation estimate for active listings each month.

### Filters Used

ZIP: White River Junction, VT 05001, East Thetford, VT 05043, Norwich, VT 05055, Sharon, VT 05065  
 Property Type: Condo/Townhouse/Apt, Single Family Residence



	Nov '18	Dec '18	Jan '19	Feb '19	Mar '19	Apr '19	May '19	Jun '19	Jul '19	Aug '19	Sep '19	Oct '19	Nov '19
Median Est Value	\$257K	\$288K	\$301K	\$327K	\$327K	\$293K	\$305K	\$345K	\$345K	\$320K	\$311K	\$264K	\$254K
Median Listing Price	\$324K	\$324K	\$344K	\$349K	\$359K	\$349K	\$344K	\$349K	\$337K	\$325K	\$325K	\$290K	\$259K
Med Listing Price as a % of Med Est Value	126%	112%	114%	107%	110%	119%	113%	101%	98%	102%	105%	110%	102%

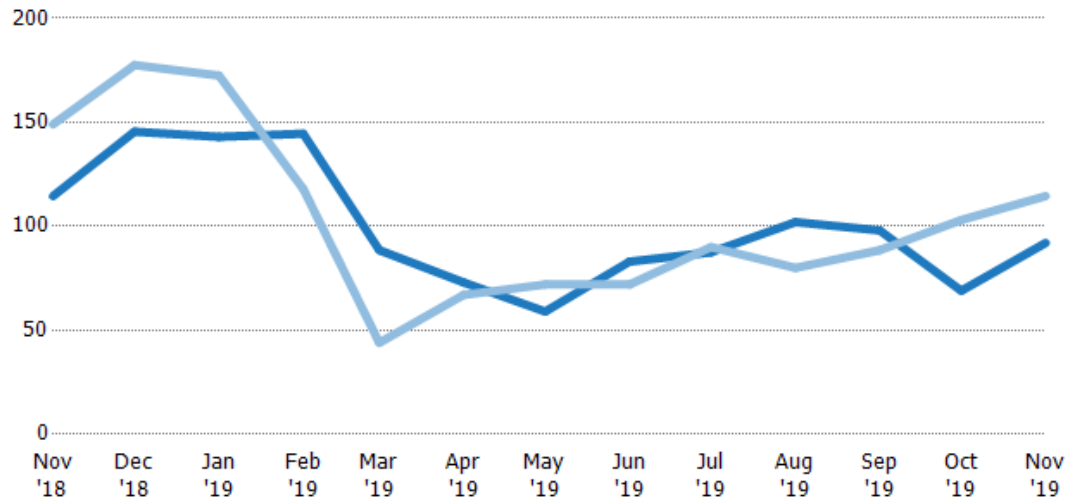
## Median Days in RPR

The median number of days between when residential properties are first displayed as active listings in RPR and when accepted offers have been noted in RPR.

### Filters Used

ZIP: White River Junction, VT 05001, East Thetford, VT 05043, Norwich, VT 05055, Sharon, VT 05065

Property Type: Condo/Townhouse/Apt, Single Family Residence



Month/Year	Days	% Chg.
Nov '19	92	-19.7%
Nov '18	115	-23.2%
Nov '17	149	-19.5%

	Nov '18	Dec '18	Jan '19	Feb '19	Mar '19	Apr '19	May '19	Jun '19	Jul '19	Aug '19	Sep '19	Oct '19	Nov '19
Current Year	115	146	143	145	88.5	73	59	83	87.5	102	98	69	92
Prior Year	149	178	173	118	44	67	72	72	90	80	88.5	103	115
Percent Change from Prior Year	-23%	-18%	-17%	22%	101%	9%	-18%	15%	-3%	28%	11%	-33%	-20%

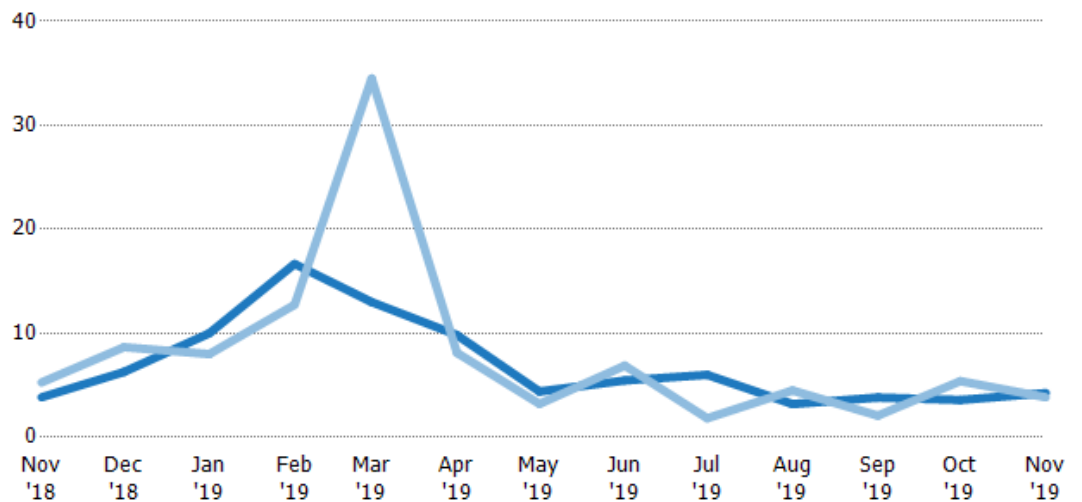
## Months of Inventory

The number of months it would take to exhaust active listings at the current sales rate.

### Filters Used

ZIP: White River Junction, VT 05001, East Thetford, VT 05043, Norwich, VT 05055, Sharon, VT 05065

Property Type: Condo/Townhouse/Apt, Single Family Residence



Month/Year	Months	% Chg.
Nov '19	4.25	10.5%
Nov '18	3.85	-27.1%
Nov '17	5.27	28%

	Nov '18	Dec '18	Jan '19	Feb '19	Mar '19	Apr '19	May '19	Jun '19	Jul '19	Aug '19	Sep '19	Oct '19	Nov '19
Current Year	3.85	6.29	10	16.7	13	9.83	4.4	5.46	6	3.19	3.82	3.59	4.25
Prior Year	5.27	8.67	8	12.8	34.5	8.13	3.21	6.89	1.83	4.5	2.08	5.4	3.85
Percent Change from Prior Year	-27%	-27%	25%	31%	-62%	21%	37%	-21%	228%	-29%	84%	-34%	11%

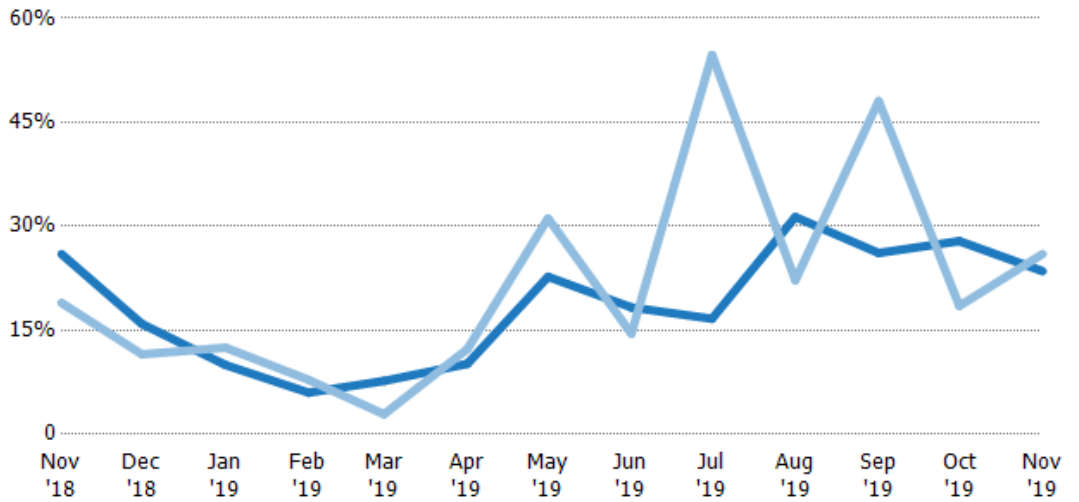
## Absorption Rate

The percentage of inventory sold per month.

### Filters Used

ZIP: White River Junction, VT 05001, East Thetford, VT 05043, Norwich, VT 05055, Sharon, VT 05065

Property Type:  
Condo/Townhouse/Apt, Single Family Residence



	Nov '18	Dec '18	Jan '19	Feb '19	Mar '19	Apr '19	May '19	Jun '19	Jul '19	Aug '19	Sep '19	Oct '19	Nov '19
Current Year	26%	16%	10%	6%	8%	10%	23%	18%	17%	31%	26%	28%	24%
Prior Year	19%	12%	13%	8%	3%	12%	31%	15%	55%	22%	48%	19%	26%
Change from Prior Year	-7%	-4%	3%	2%	-5%	2%	8%	-4%	38%	-9%	22%	-9%	2%

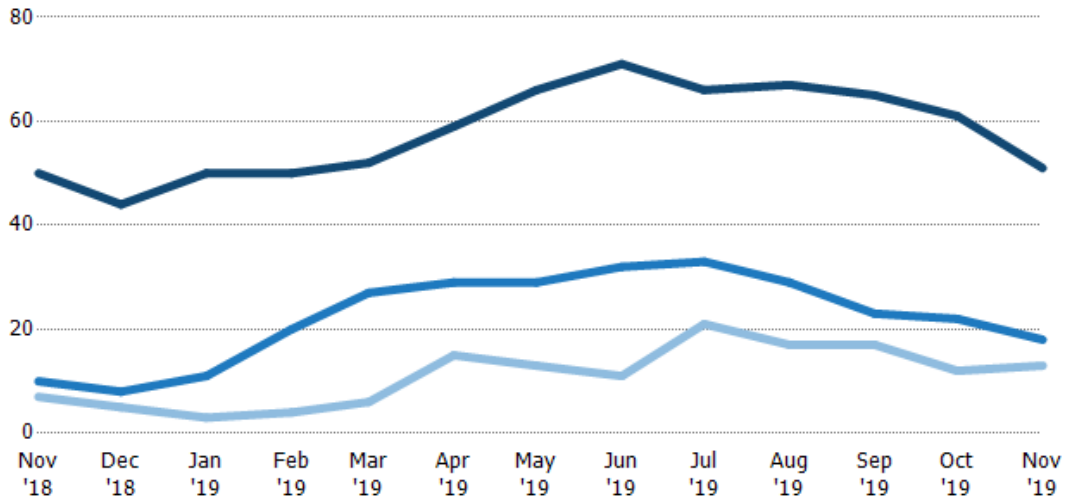
## Active/Pending/Sold Units

The number of residential properties that were Active, Pending and Sold each month.

### Filters Used

ZIP: White River Junction, VT 05001, East Thetford, VT 05043, Norwich, VT 05055, Sharon, VT 05065

Property Type:  
Condo/Townhouse/Apt, Single Family Residence



	Nov '18	Dec '18	Jan '19	Feb '19	Mar '19	Apr '19	May '19	Jun '19	Jul '19	Aug '19	Sep '19	Oct '19	Nov '19
Active	50	44	50	50	52	59	66	71	66	67	65	61	51
Pending	10	8	11	20	27	29	29	32	33	29	23	22	18
Sold	7	5	3	4	6	15	13	11	21	17	17	12	13

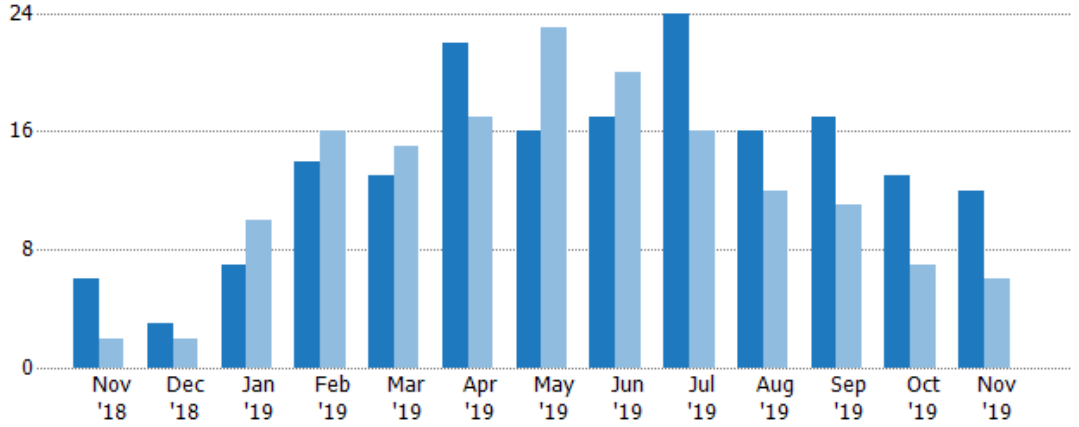
## New Pending Sales

The number of residential properties with accepted offers that were added each month.

### Filters Used

ZIP: White River Junction, VT 05001, East Thetford, VT 05043, Norwich, VT 05055, Sharon, VT 05065

Property Type:  
Condo/Townhouse/Apt, Single Family Residence



Month/Year	Count	% Chg.
Nov '19	12	100%
Nov '18	6	200%
Nov '17	2	250%

	Nov '18	Dec '18	Jan '19	Feb '19	Mar '19	Apr '19	May '19	Jun '19	Jul '19	Aug '19	Sep '19	Oct '19	Nov '19
Current Year	6	3	7	14	13	22	16	17	24	16	17	13	12
Prior Year	2	2	10	16	15	17	23	20	16	12	11	7	6
Percent Change from Prior Year	200%	50%	-30%	-13%	-13%	29%	-30%	-15%	50%	33%	55%	86%	100%

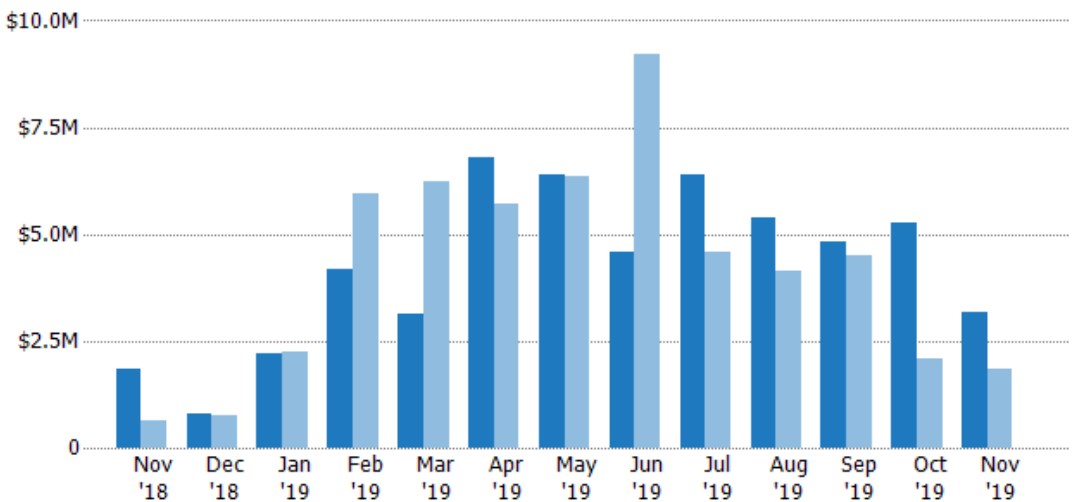
## New Pending Sales Volume

The sum of the sales price of residential properties with accepted offers that were added each month.

### Filters Used

ZIP: White River Junction, VT 05001, East Thetford, VT 05043, Norwich, VT 05055, Sharon, VT 05065

Property Type:  
Condo/Townhouse/Apt, Single Family Residence



Month/Year	Volume	% Chg.
Nov '19	\$3.19M	72.6%
Nov '18	\$1.85M	190.7%
Nov '17	\$635K	139.6%

	Nov '18	Dec '18	Jan '19	Feb '19	Mar '19	Apr '19	May '19	Jun '19	Jul '19	Aug '19	Sep '19	Oct '19	Nov '19
Current Year	\$1.85M	\$814K	\$2.22M	\$4.18M	\$3.12M	\$6.81M	\$6.41M	\$4.57M	\$6.39M	\$5.4M	\$4.84M	\$5.28M	\$3.19M
Prior Year	\$635K	\$749K	\$2.26M	\$5.95M	\$6.25M	\$5.72M	\$6.35M	\$9.2M	\$4.6M	\$4.13M	\$4.49M	\$2.1M	\$1.85M
Percent Change from Prior Year	191%	9%	-2%	-30%	-50%	19%	1%	-50%	39%	31%	8%	151%	73%



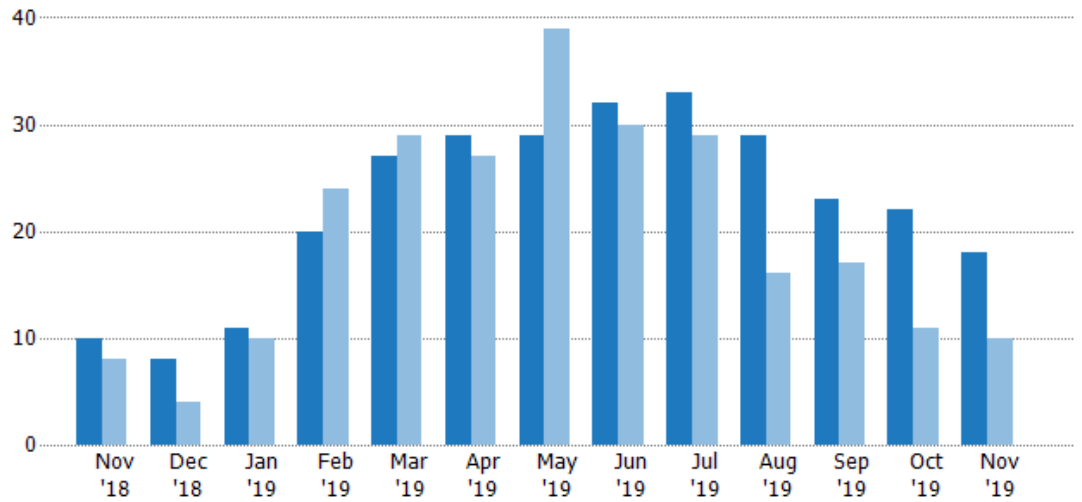
## Pending Sales

The number of residential properties with accepted offers that were available at the end each month.

### Filters Used

ZIP: White River Junction, VT 05001, East Thetford, VT 05043, Norwich, VT 05055, Sharon, VT 05065

Property Type:  
Condo/Townhouse/Apt, Single Family Residence



	Nov '18	Dec '18	Jan '19	Feb '19	Mar '19	Apr '19	May '19	Jun '19	Jul '19	Aug '19	Sep '19	Oct '19	Nov '19
Current Year	10	8	11	20	27	29	29	32	33	29	23	22	18
Prior Year	8	4	10	24	29	27	39	30	29	16	17	11	10
Percent Change from Prior Year	25%	100%	10%	-17%	-7%	7%	-26%	7%	14%	81%	35%	100%	80%

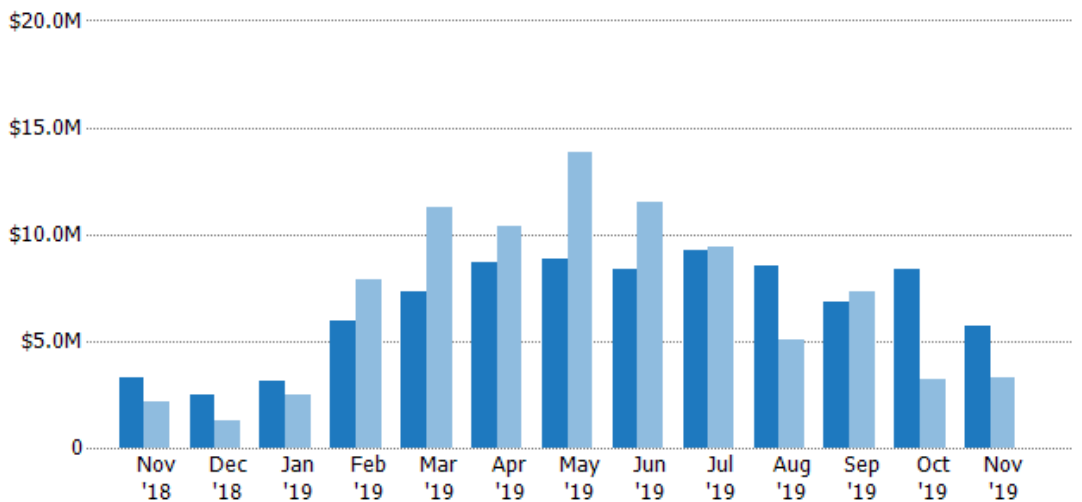
## Pending Sales Volume

The sum of the sales price of residential properties with accepted offers that were available at the end of each month.

### Filters Used

ZIP: White River Junction, VT 05001, East Thetford, VT 05043, Norwich, VT 05055, Sharon, VT 05065

Property Type:  
Condo/Townhouse/Apt, Single Family Residence



	Nov '18	Dec '18	Jan '19	Feb '19	Mar '19	Apr '19	May '19	Jun '19	Jul '19	Aug '19	Sep '19	Oct '19	Nov '19
Current Year	\$3.28M	\$2.5M	\$3.1M	\$5.96M	\$7.33M	\$8.65M	\$8.83M	\$8.39M	\$9.26M	\$8.52M	\$6.82M	\$8.32M	\$5.67M
Prior Year	\$2.13M	\$1.29M	\$2.51M	\$7.88M	\$11.2M	\$10.4M	\$13.8M	\$11.5M	\$9.37M	\$5.07M	\$7.31M	\$3.18M	\$3.28M
Percent Change from Prior Year	54%	93%	24%	-24%	-35%	-17%	-36%	-27%	-1%	68%	-7%	162%	73%

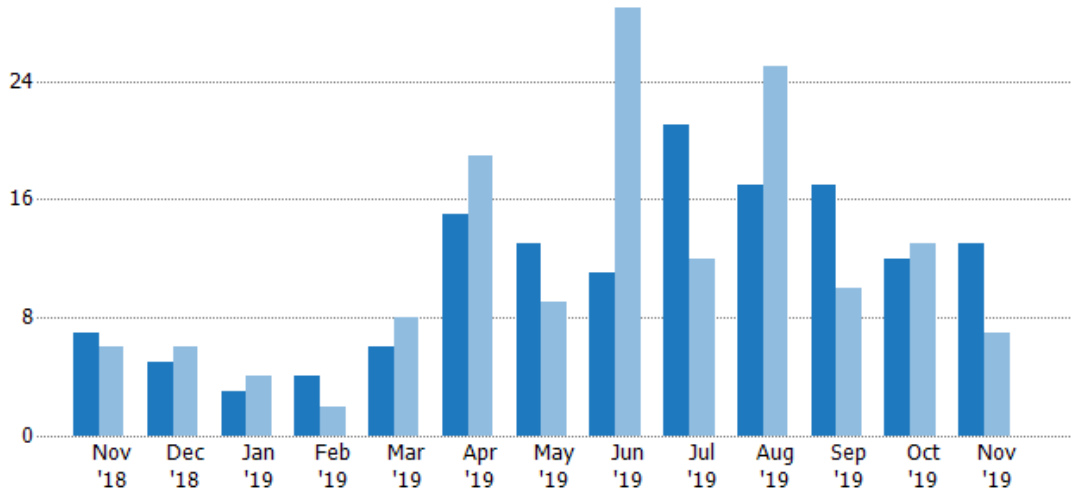
## Closed Sales

The total number of residential properties sold each month.

### Filters Used

ZIP: White River Junction, VT 05001, East Thetford, VT 05043, Norwich, VT 05055, Sharon, VT 05065

Property Type: Condo/Townhouse/Apt, Single Family Residence



	Nov '18	Dec '18	Jan '19	Feb '19	Mar '19	Apr '19	May '19	Jun '19	Jul '19	Aug '19	Sep '19	Oct '19	Nov '19
Current Year	7	5	3	4	6	15	13	11	21	17	17	12	13
Prior Year	6	6	4	2	8	19	9	29	12	25	10	13	7
Percent Change from Prior Year	17%	-17%	-25%	100%	-25%	-21%	44%	-62%	75%	-32%	70%	-8%	86%

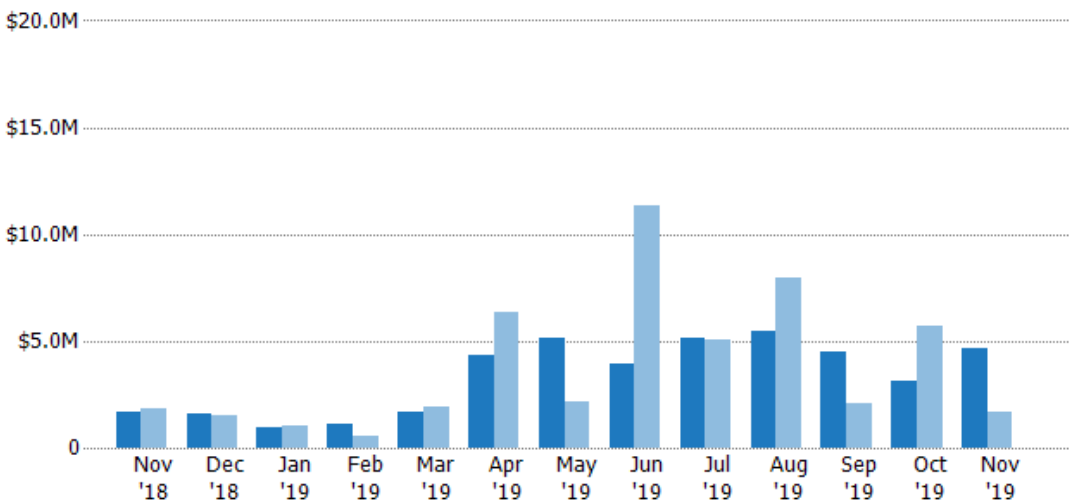
## Closed Sales Volume

The sum of the sales price of residential properties sold each month.

### Filters Used

ZIP: White River Junction, VT 05001, East Thetford, VT 05043, Norwich, VT 05055, Sharon, VT 05065

Property Type: Condo/Townhouse/Apt, Single Family Residence



	Nov '18	Dec '18	Jan '19	Feb '19	Mar '19	Apr '19	May '19	Jun '19	Jul '19	Aug '19	Sep '19	Oct '19	Nov '19
Current Year	\$1.67M	\$1.56M	\$944K	\$1.1M	\$1.68M	\$4.31M	\$5.14M	\$3.92M	\$5.12M	\$5.49M	\$4.47M	\$3.15M	\$4.63M
Prior Year	\$1.87M	\$1.53M	\$1.01M	\$560K	\$1.91M	\$6.35M	\$2.12M	\$11.4M	\$5.06M	\$7.99M	\$2.11M	\$5.74M	\$1.67M
Percent Change from Prior Year	-11%	2%	-7%	96%	-12%	-32%	142%	-65%	1%	-31%	112%	-45%	177%

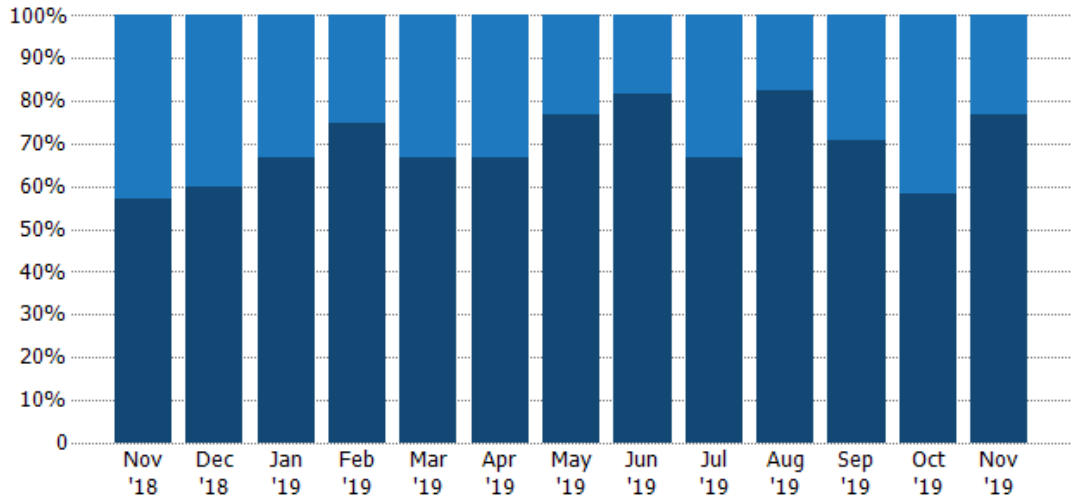
## Closed Sales by Property Type

The percentage of residential properties sold each month by property type.

### Filters Used

ZIP: White River Junction, VT 05001, East Thetford, VT 05043, Norwich, VT 05055, Sharon, VT 05065

Property Type: Condo/Townhouse/Apt, Single Family Residence



Condo/Townhouse	43%	40%	33%	25%	33%	33%	23%	18%	33%	18%	29%	42%	23%
Single Family Residence	57%	60%	67%	75%	67%	67%	77%	82%	67%	82%	71%	58%	77%

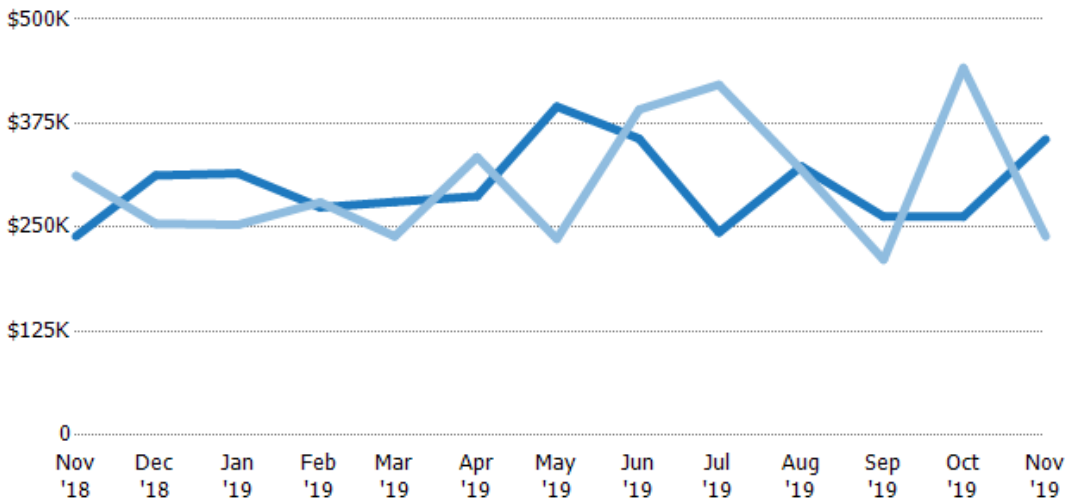
## Average Sales Price

The average sales price of the residential properties sold each month.

### Filters Used

ZIP: White River Junction, VT 05001, East Thetford, VT 05043, Norwich, VT 05055, Sharon, VT 05065

Property Type: Condo/Townhouse/Apt, Single Family Residence



Month/Year	Price	% Chg.
Nov '19	\$356K	48.9%
Nov '18	\$239K	-23.4%
Nov '17	\$312K	-41.6%

Current Year	\$239K	\$312K	\$315K	\$274K	\$281K	\$287K	\$395K	\$357K	\$244K	\$323K	\$263K	\$263K	\$356K
Prior Year	\$312K	\$254K	\$253K	\$280K	\$239K	\$334K	\$236K	\$391K	\$421K	\$319K	\$211K	\$442K	\$239K
Percent Change from Prior Year	-23%	23%	24%	-2%	17%	-14%	67%	-9%	-42%	1%	25%	-41%	49%

## Median Sales Price

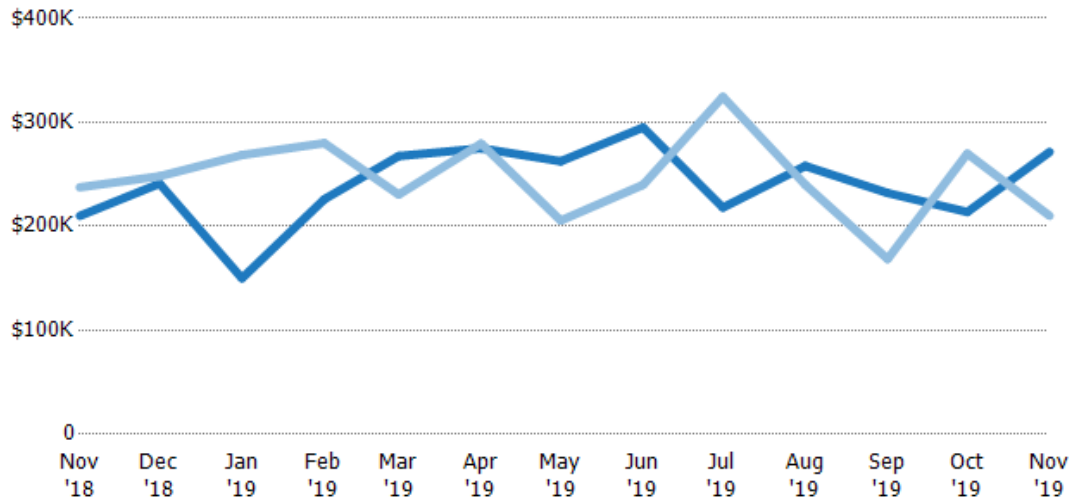
The median sales price of the residential properties sold each month.

### Filters Used

ZIP: White River Junction, VT 05001, East Thetford, VT 05043, Norwich, VT 05055, Sharon, VT 05065

Property Type: Condo/Townhouse/Apt, Single Family Residence

Month/Year	Price	% Chg.
Nov '19	\$272K	29.3%
Nov '18	\$210K	-11.6%
Nov '17	\$238K	-24.5%



Current Year	\$210K	\$241K	\$150K	\$226K	\$268K	\$275K	\$263K	\$295K	\$218K	\$258K	\$232K	\$214K	\$272K
Prior Year	\$238K	\$248K	\$269K	\$280K	\$231K	\$280K	\$206K	\$240K	\$325K	\$240K	\$169K	\$270K	\$210K
Percent Change from Prior Year	-12%	-3%	-44%	-19%	16%	-2%	28%	23%	-33%	8%	38%	-21%	29%

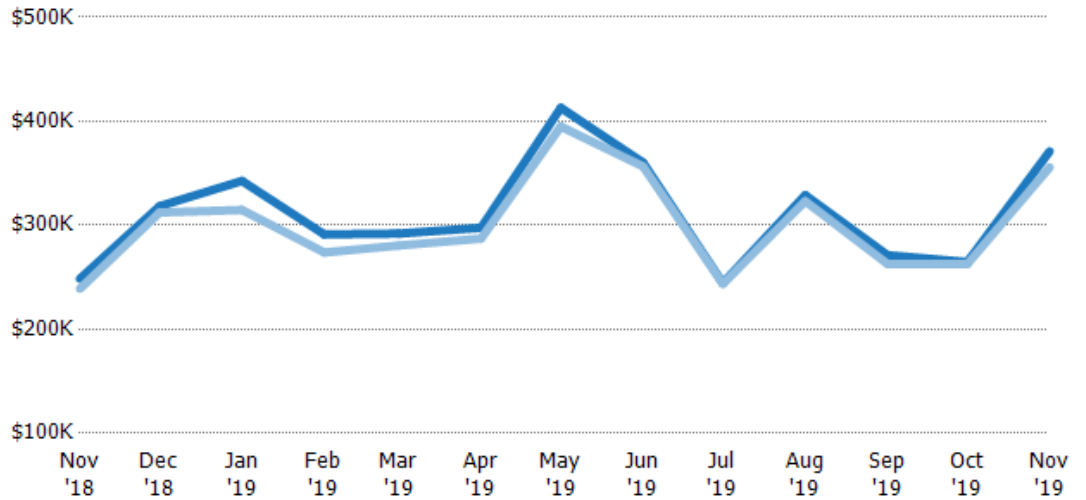
## Average Sales Price vs Average Listing Price

The average sales price as a percentage of the average listing price for properties sold each month.

### Filters Used

ZIP: White River Junction, VT 05001, East Thetford, VT 05043, Norwich, VT 05055, Sharon, VT 05065

Property Type: Condo/Townhouse/Apt, Single Family Residence



Avg List Price	\$249K	\$318K	\$343K	\$291K	\$292K	\$298K	\$413K	\$360K	\$244K	\$329K	\$271K	\$265K	\$371K
Avg Sales Price	\$239K	\$312K	\$315K	\$274K	\$281K	\$287K	\$395K	\$357K	\$244K	\$323K	\$263K	\$263K	\$356K
Avg Sales Price as a % of Avg List Price	96%	98%	92%	94%	96%	97%	96%	99%	100%	98%	97%	99%	96%

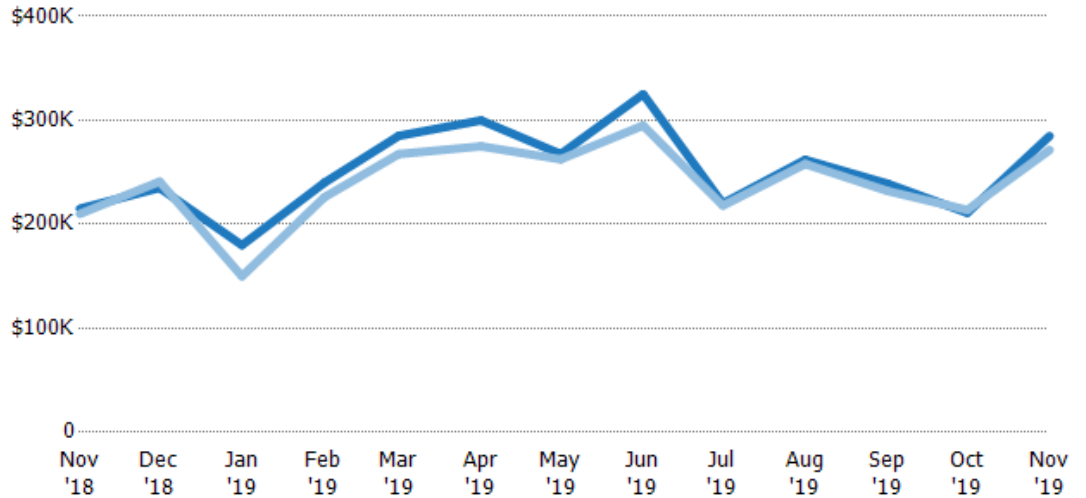
## Median Sales Price vs Median Listing Price

The median sales price as a percentage of the median listing price for properties sold each month.

### Filters Used

ZIP: White River Junction, VT 05001, East Thetford, VT 05043, Norwich, VT 05055, Sharon, VT 05065

Property Type:  
Condo/Townhouse/Apt, Single Family Residence



	Nov '18	Dec '18	Jan '19	Feb '19	Mar '19	Apr '19	May '19	Jun '19	Jul '19	Aug '19	Sep '19	Oct '19	Nov '19
Median List Price	\$215K	\$235K	\$180K	\$240K	\$285K	\$300K	\$268K	\$325K	\$220K	\$262K	\$239K	\$211K	\$285K
Median Sales Price	\$210K	\$241K	\$150K	\$226K	\$268K	\$275K	\$263K	\$295K	\$218K	\$258K	\$232K	\$214K	\$272K
Med Sales Price as a % of Med List Price	98%	103%	83%	94%	94%	92%	98%	91%	99%	98%	97%	101%	95%

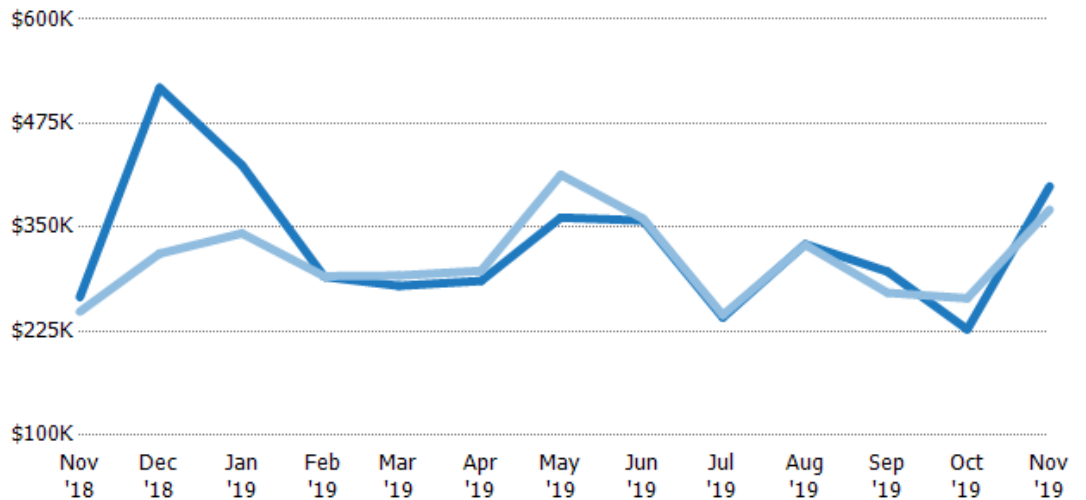
## Average Sales Price vs Average Est Value

The average sales price as a percentage of the average AVM or RVM® valuation estimate for properties sold each month.

### Filters Used

ZIP: White River Junction, VT 05001, East Thetford, VT 05043, Norwich, VT 05055, Sharon, VT 05065

Property Type:  
Condo/Townhouse/Apt, Single Family Residence



	Nov '18	Dec '18	Jan '19	Feb '19	Mar '19	Apr '19	May '19	Jun '19	Jul '19	Aug '19	Sep '19	Oct '19	Nov '19
Avg Est Value	\$266K	\$518K	\$425K	\$291K	\$280K	\$286K	\$362K	\$358K	\$242K	\$330K	\$297K	\$227K	\$399K
Avg Sales Price	\$249K	\$318K	\$343K	\$291K	\$292K	\$298K	\$413K	\$360K	\$244K	\$329K	\$271K	\$265K	\$371K
Avg Sales Price as a % of Avg Est Value	93%	61%	81%	100%	104%	104%	114%	101%	101%	100%	91%	116%	93%

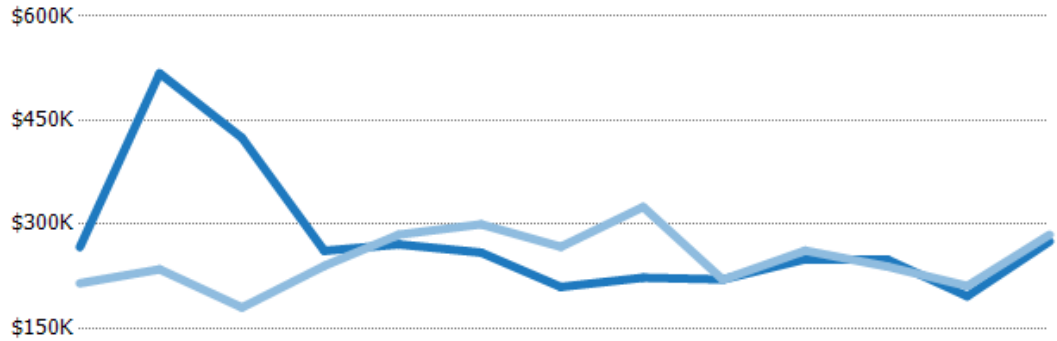
## Median Sales Price vs Median Est Value

The median sales price as a percent of the median AVM or RVM® valuation estimate for properties sold each month.

### Filters Used

ZIP: White River Junction, VT 05001, East Thetford, VT 05043, Norwich, VT 05055, Sharon, VT 05065

Property Type: Condo/Townhouse/Apt, Single Family Residence



	Nov '18	Dec '18	Jan '19	Feb '19	Mar '19	Apr '19	May '19	Jun '19	Jul '19	Aug '19	Sep '19	Oct '19	Nov '19
Median Est Value	\$267K	\$518K	\$425K	\$262K	\$271K	\$259K	\$210K	\$223K	\$221K	\$250K	\$249K	\$196K	\$275K
Median Sales Price	\$215K	\$235K	\$180K	\$240K	\$285K	\$300K	\$268K	\$325K	\$220K	\$262K	\$239K	\$211K	\$285K
Med Sales Price as a % of Med Est Value	81%	45%	42%	92%	105%	116%	128%	146%	100%	105%	96%	108%	104%