

Summary of Key Listing and Sales Metrics

A summary of the key metrics selected to be included in the report. MLS sources where licensed.

Key Metrics	Nov 2019	Nov 2018	+ / -	YTD 2019	YTD 2018	+ / -
Listing Activity Charts Metrics						
New Listing Count	13	32	-59.4%	319	413	-22.8%
New Listing Volume	\$3,855,900	\$9,912,799	-61.1%	\$101,062,096	\$127,122,437	-20.5%
Active Listing Count	208	275	-24.4%	N/A	N/A	
Active Listing Volume	\$80,823,497	\$109,255,447	-26%	N/A	N/A	
Average Listing Price	\$388,575	\$397,293	-2.2%	\$395,571	\$365,227	+8.3%
Median Listing Price	\$287,450	\$289,900	-0.8%	\$293,101	\$251,364	+16.6%
Median Days in RPR	177.5	154	+15.3%	176.86	166.01	+6.5%
Months of Inventory	9.9	15.3	-35.2%	12.9	15.1	-14.9%
Absorption Rate	10.1%	6.55%	+3.6%	7.77%	6.61%	+1.2%
Sales Activity Charts Metrics						
New Pending Sales Count	36	23	+56.5%	268	239	+12.1%
New Pending Sales Volume	\$10,423,400	\$4,457,000	+133.9%	\$66,305,045	\$54,601,735	+21.4%
Pending Sales Count	48	29	+65.5%	N/A	N/A	
Pending Sales Volume	\$13,047,400	\$5,163,395	+152.7%	N/A	N/A	
Closed Sales Count	25	33	-24.2%	202	213	-5.2%
Closed Sales Volume	\$4,244,300	\$6,094,100	-30.4%	\$45,242,806	\$46,588,493	-2.9%
Average Sales Price	\$169,772	\$184,670	-8.1%	\$223,974	\$218,725	+2.4%
Median Sales Price	\$160,000	\$175,000	-8.6%	\$201,619	\$193,854	+4%

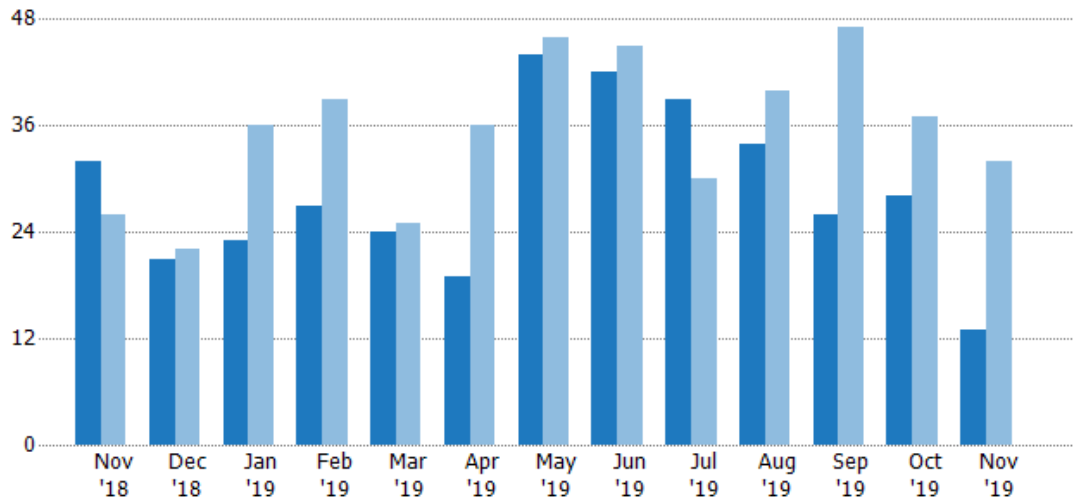
New Listings

The number of new residential listings that were added each month.

Filters Used

ZIP: East Dover, VT 05341, South Newfane, VT 05351, Wardsboro, VT 05355, West Dover, VT 05356, Wilmington, VT 05363
 Property Type: Condo/Townhouse/Apt, Single Family Residence

Month/Year	Count	% Chg.
Nov '19	13	-59.4%
Nov '18	32	23.1%
Nov '17	26	-11.5%



Current Year	32	21	23	27	24	19	44	42	39	34	26	28	13
Prior Year	26	22	36	39	25	36	46	45	30	40	47	37	32
Percent Change from Prior Year	23%	-5%	-36%	-31%	-4%	-47%	-4%	-7%	30%	-15%	-45%	-24%	-59%

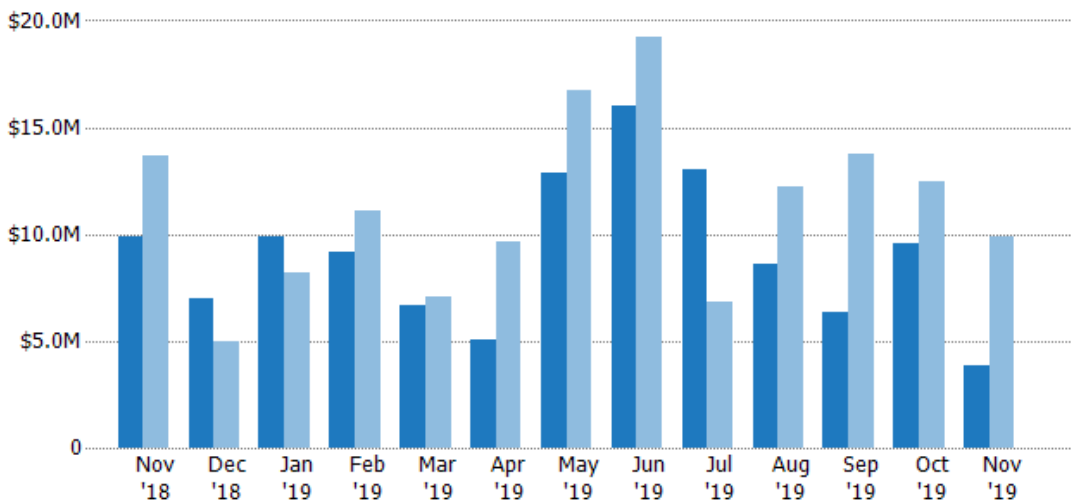
New Listing Volume

The sum of the listing price of residential listings that were added each month.

Filters Used

ZIP: East Dover, VT 05341, South Newfane, VT 05351, Wardsboro, VT 05355, West Dover, VT 05356, Wilmington, VT 05363
 Property Type: Condo/Townhouse/Apt, Single Family Residence

Month/Year	Volume	% Chg.
Nov '19	\$3.86M	-61.1%
Nov '18	\$9.91M	-27.4%
Nov '17	\$13.7M	-43.9%



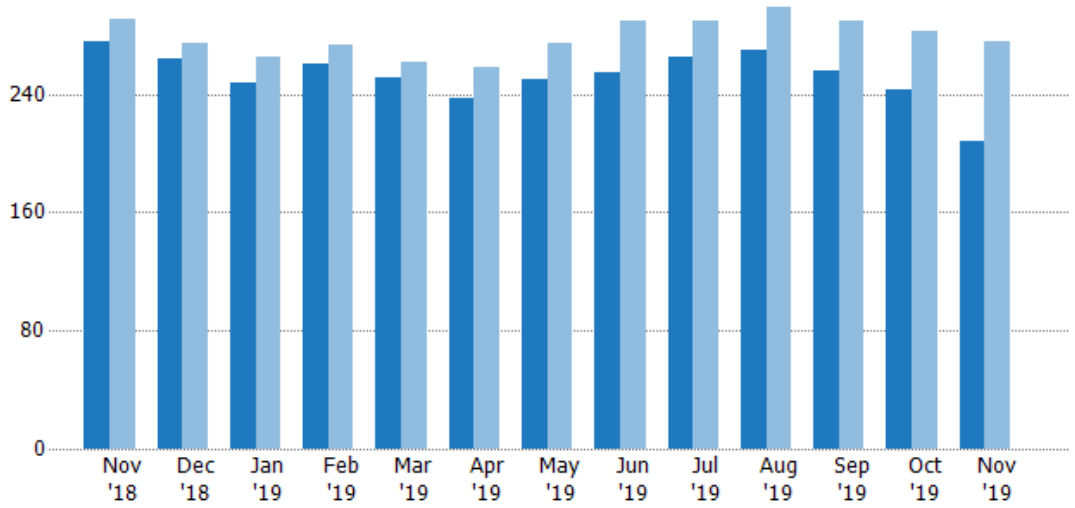
Current Year	\$9.91M	\$6.97M	\$9.91M	\$9.13M	\$6.68M	\$5.07M	\$12.9M	\$16M	\$13M	\$8.59M	\$6.32M	\$9.59M	\$3.86M
Prior Year	\$13.7M	\$4.95M	\$8.2M	\$11.1M	\$7.11M	\$9.63M	\$16.7M	\$19.2M	\$6.79M	\$12.2M	\$13.8M	\$12.5M	\$9.91M
Percent Change from Prior Year	-27%	41%	21%	-18%	-6%	-47%	-23%	-17%	91%	-30%	-54%	-23%	-61%

Active Listings

The number of active residential listings at the end of each month.

Filters Used

ZIP: East Dover, VT 05341, South Newfane, VT 05351, Wardsboro, VT 05355, West Dover, VT 05356, Wilmington, VT 05363
 Property Type: Condo/Townhouse/Apt, Single Family Residence



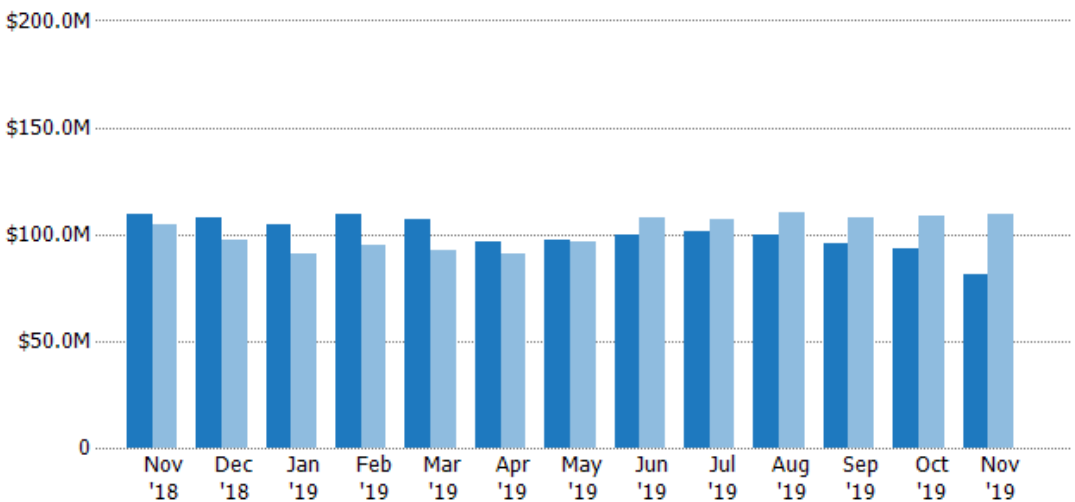
	Nov '18	Dec '18	Jan '19	Feb '19	Mar '19	Apr '19	May '19	Jun '19	Jul '19	Aug '19	Sep '19	Oct '19	Nov '19
Current Year	275	264	248	260	251	237	250	255	265	270	256	243	208
Prior Year	291	274	265	273	262	258	274	290	290	299	289	283	275
Percent Change from Prior Year	-5%	-4%	-6%	-5%	-4%	-8%	-9%	-12%	-9%	-10%	-11%	-14%	-24%

Active Listing Volume

The sum of the listing price of active residential listings at the end of each month.

Filters Used

ZIP: East Dover, VT 05341, South Newfane, VT 05351, Wardsboro, VT 05355, West Dover, VT 05356, Wilmington, VT 05363
 Property Type: Condo/Townhouse/Apt, Single Family Residence



	Nov '18	Dec '18	Jan '19	Feb '19	Mar '19	Apr '19	May '19	Jun '19	Jul '19	Aug '19	Sep '19	Oct '19	Nov '19
Current Year	\$109M	\$108M	\$105M	\$110M	\$107M	\$96.2M	\$97.3M	\$100M	\$101M	\$100M	\$95.5M	\$93.6M	\$80.8M
Prior Year	\$105M	\$97.4M	\$91.2M	\$95.2M	\$92.6M	\$90.8M	\$96.9M	\$108M	\$107M	\$110M	\$108M	\$108M	\$109M
Percent Change from Prior Year	5%	11%	15%	15%	16%	6%	0%	-7%	-5%	-10%	-12%	-14%	-26%

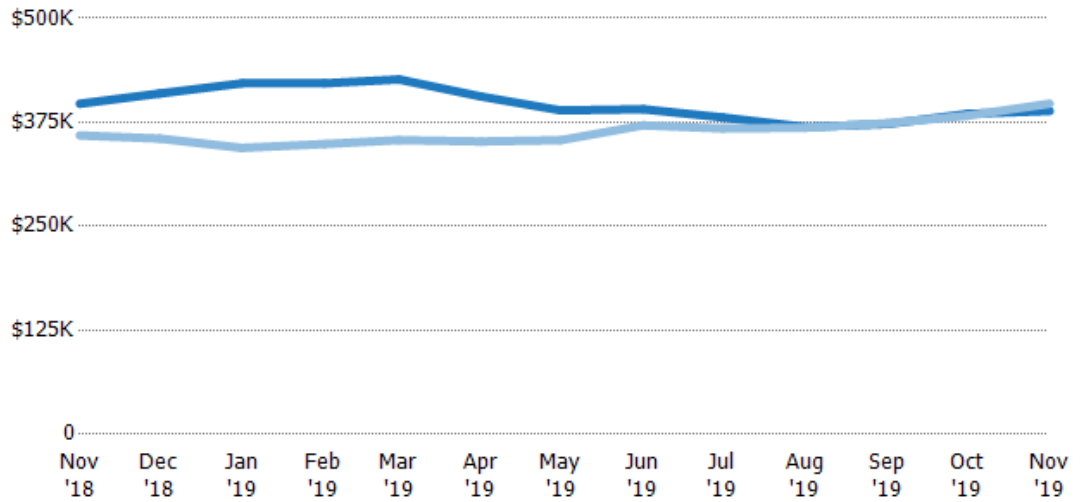
Average Listing Price

The average listing price of active residential listings at the end of each month.

Filters Used

ZIP: East Dover, VT 05341, South Newfane, VT 05351, Wardsboro, VT 05355, West Dover, VT 05356, Wilmington, VT 05363
 Property Type: Condo/Townhouse/Apt, Single Family Residence

Month/Year	Price	% Chg.
Nov '19	\$389K	-2.2%
Nov '18	\$397K	10.6%
Nov '17	\$359K	0.4%



Current Year	\$397K	\$410K	\$422K	\$422K	\$427K	\$406K	\$389K	\$391K	\$381K	\$369K	\$373K	\$385K	\$389K
Prior Year	\$359K	\$355K	\$344K	\$349K	\$354K	\$352K	\$354K	\$371K	\$368K	\$369K	\$374K	\$383K	\$397K
Percent Change from Prior Year	11%	15%	23%	21%	21%	15%	10%	5%	4%	0%	0%	1%	-2%

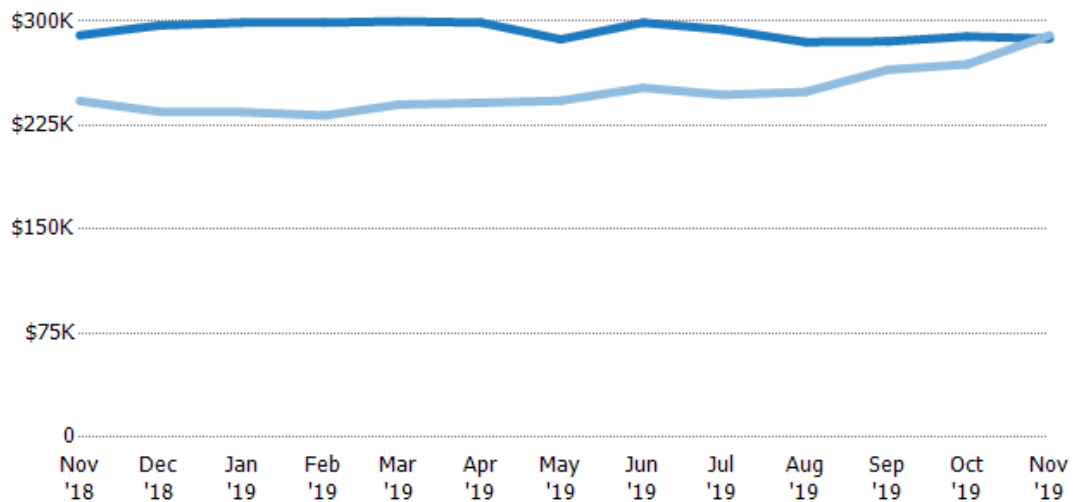
Median Listing Price

The median listing price of active residential listings at the end of each month.

Filters Used

ZIP: East Dover, VT 05341, South Newfane, VT 05351, Wardsboro, VT 05355, West Dover, VT 05356, Wilmington, VT 05363
 Property Type: Condo/Townhouse/Apt, Single Family Residence

Month/Year	Price	% Chg.
Nov '19	\$287K	-0.8%
Nov '18	\$290K	19.5%
Nov '17	\$243K	1.2%



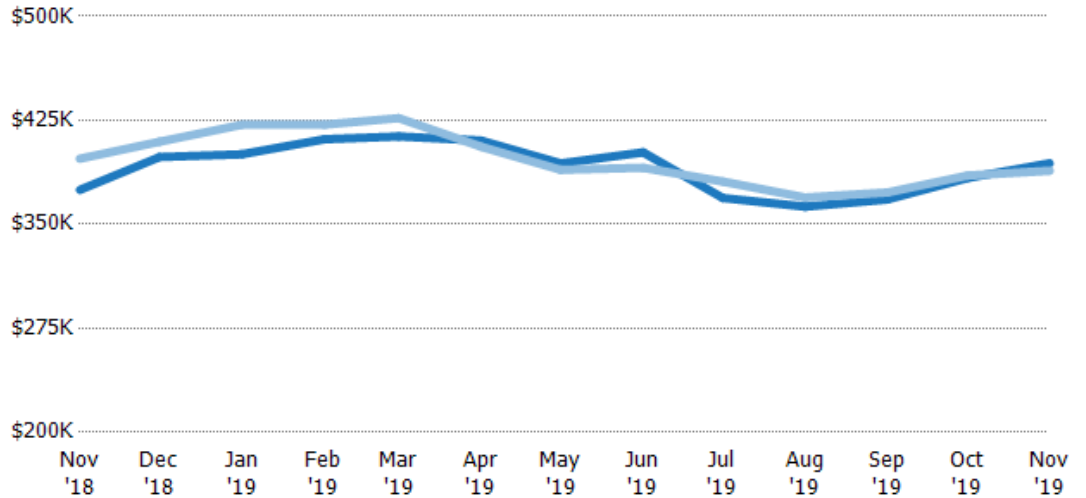
Current Year	\$290K	\$297K	\$299K	\$299K	\$300K	\$299K	\$287K	\$299K	\$294K	\$285K	\$285K	\$289K	\$287K
Prior Year	\$243K	\$235K	\$235K	\$232K	\$240K	\$241K	\$243K	\$252K	\$247K	\$249K	\$265K	\$269K	\$290K
Percent Change from Prior Year	20%	27%	28%	29%	25%	24%	18%	19%	19%	14%	8%	7%	-1%

Average Listing Price vs Average Est Value

The average listing price as a percentage of the average AVM or RVM® valuation estimate for active listings each month.

Filters Used

ZIP: East Dover, VT 05341, South Newfane, VT 05351, Wardsboro, VT 05355, West Dover, VT 05356, Wilmington, VT 05363
 Property Type: Condo/Townhouse/Apt, Single Family Residence



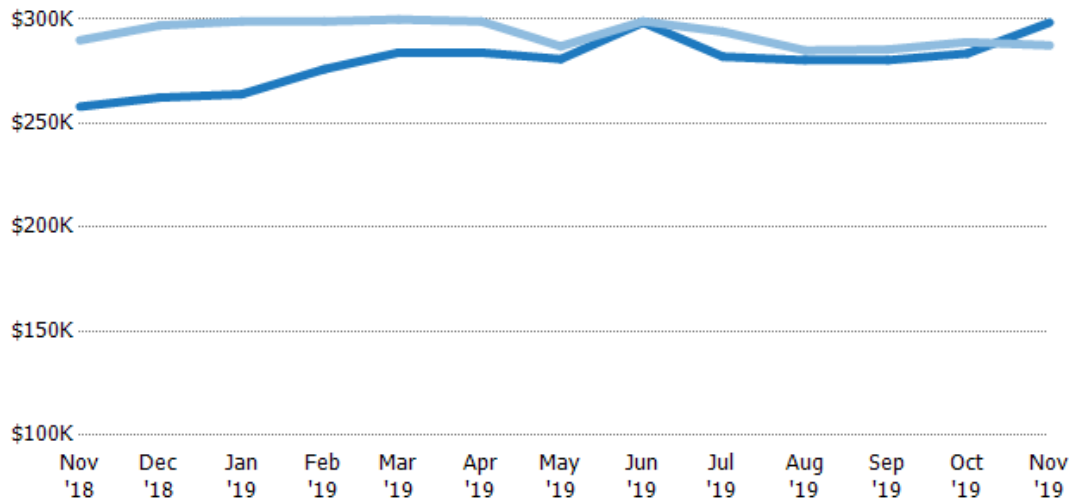
	Nov '18	Dec '18	Jan '19	Feb '19	Mar '19	Apr '19	May '19	Jun '19	Jul '19	Aug '19	Sep '19	Oct '19	Nov '19
Avg Est Value	\$375K	\$398K	\$401K	\$411K	\$413K	\$410K	\$394K	\$402K	\$369K	\$363K	\$368K	\$383K	\$394K
Avg Listing Price	\$397K	\$410K	\$422K	\$422K	\$427K	\$406K	\$389K	\$391K	\$381K	\$369K	\$373K	\$385K	\$389K
Avg Listing Price as a % of Avg Est Value	106%	103%	105%	103%	103%	99%	99%	97%	103%	102%	101%	100%	99%

Median Listing Price vs Median Est Value

The median listing price as a percentage of the median AVM or RVM® valuation estimate for active listings each month.

Filters Used

ZIP: East Dover, VT 05341, South Newfane, VT 05351, Wardsboro, VT 05355, West Dover, VT 05356, Wilmington, VT 05363
 Property Type: Condo/Townhouse/Apt, Single Family Residence



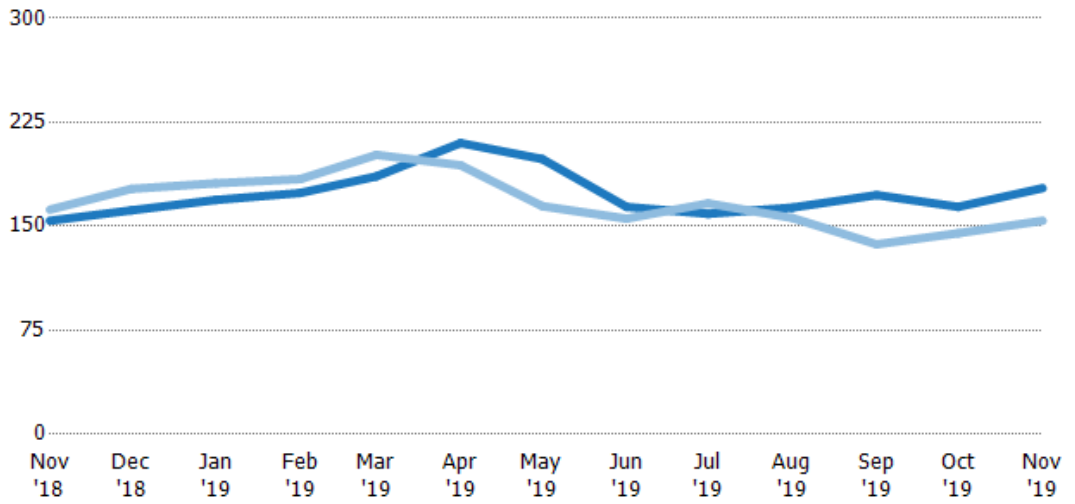
	Nov '18	Dec '18	Jan '19	Feb '19	Mar '19	Apr '19	May '19	Jun '19	Jul '19	Aug '19	Sep '19	Oct '19	Nov '19
Median Est Value	\$258K	\$262K	\$264K	\$276K	\$284K	\$284K	\$281K	\$298K	\$282K	\$280K	\$280K	\$284K	\$298K
Median Listing Price	\$290K	\$297K	\$299K	\$299K	\$300K	\$299K	\$287K	\$299K	\$294K	\$285K	\$285K	\$289K	\$287K
Med Listing Price as a % of Med Est Value	112%	113%	113%	108%	106%	105%	102%	100%	104%	102%	102%	102%	96%

Median Days in RPR

The median number of days between when residential properties are first displayed as active listings in RPR and when accepted offers have been noted in RPR.

Filters Used

ZIP: East Dover, VT 05341, South Newfane, VT 05351, Wardsboro, VT 05355, West Dover, VT 05356, Wilmington, VT 05363
 Property Type: Condo/Townhouse/Apt, Single Family Residence



Month/Year	Days	% Chg.
Nov '19	178	15.3%
Nov '18	154	-4.9%
Nov '17	162	-1.9%

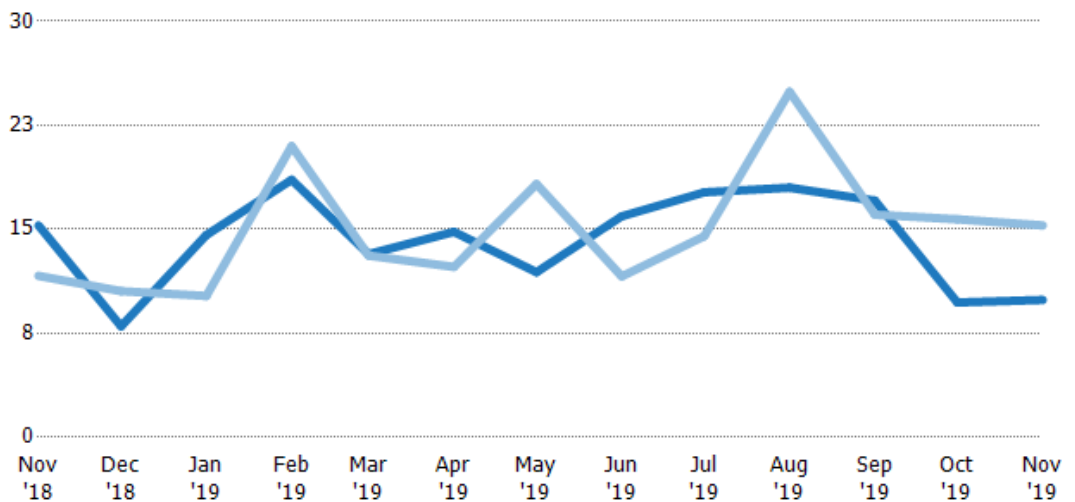
	Nov '18	Dec '18	Jan '19	Feb '19	Mar '19	Apr '19	May '19	Jun '19	Jul '19	Aug '19	Sep '19	Oct '19	Nov '19
Current Year	154	162	169	174	186	210	199	164	159	164	173	164	178
Prior Year	162	177	181	184	202	194	165	156	167	156	137	145	154
Percent Change from Prior Year	-5%	-9%	-7%	-5%	-8%	8%	21%	5%	-5%	5%	26%	13%	15%

Months of Inventory

The number of months it would take to exhaust active listings at the current sales rate.

Filters Used

ZIP: East Dover, VT 05341, South Newfane, VT 05351, Wardsboro, VT 05355, West Dover, VT 05356, Wilmington, VT 05363
 Property Type: Condo/Townhouse/Apt, Single Family Residence



Month/Year	Months	% Chg.
Nov '19	9.9	-35.2%
Nov '18	15.3	31.3%
Nov '17	11.6	15.1%

	Nov '18	Dec '18	Jan '19	Feb '19	Mar '19	Apr '19	May '19	Jun '19	Jul '19	Aug '19	Sep '19	Oct '19	Nov '19
Current Year	15.3	8	14.6	18.6	13.2	14.8	11.9	15.9	17.7	18	17.1	9.72	9.9
Prior Year	11.6	10.5	10.2	21	13.1	12.3	18.3	11.6	14.5	24.9	16.1	15.7	15.3
Percent Change from Prior Year	31%	-24%	43%	-12%	1%	21%	-35%	37%	22%	-28%	6%	-38%	-35%

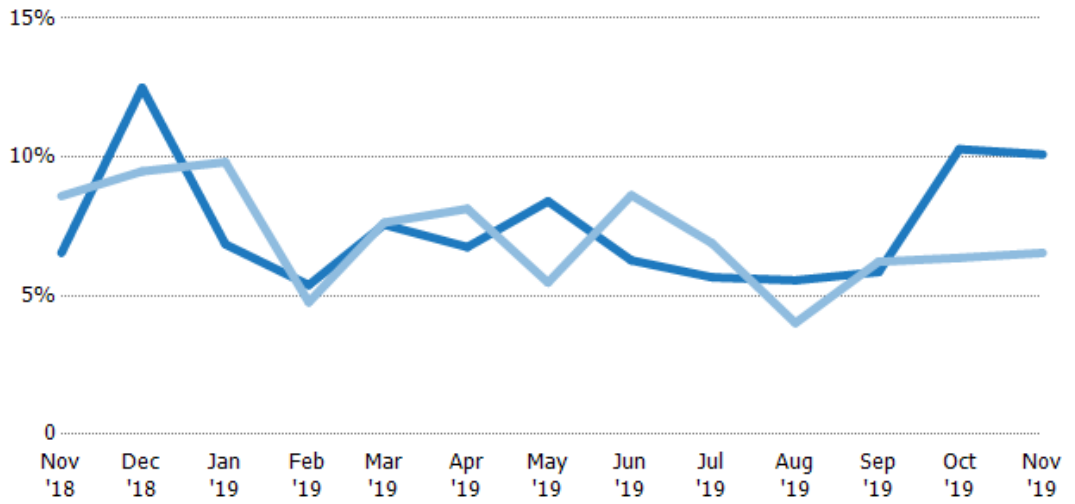
Absorption Rate

The percentage of inventory sold per month.

Filters Used

ZIP: East Dover, VT 05341, South Newfane, VT 05351, Wardsboro, VT 05355, West Dover, VT 05356, Wilmington, VT 05363

Property Type:
Condo/Townhouse/Apt, Single Family Residence



Month/Year	Rate	Chg.
Nov '19	10%	-3.6%
Nov '18	7%	2.1%
Nov '17	9%	-13.2%

	Nov '18	Dec '18	Jan '19	Feb '19	Mar '19	Apr '19	May '19	Jun '19	Jul '19	Aug '19	Sep '19	Oct '19	Nov '19
Current Year	7%	13%	7%	5%	8%	7%	8%	6%	6%	6%	6%	10%	10%
Prior Year	9%	9%	10%	5%	8%	8%	5%	9%	7%	4%	6%	6%	7%
Change from Prior Year	2%	-3%	3%	-1%	0%	1%	-3%	2%	1%	-2%	0%	-4%	-4%

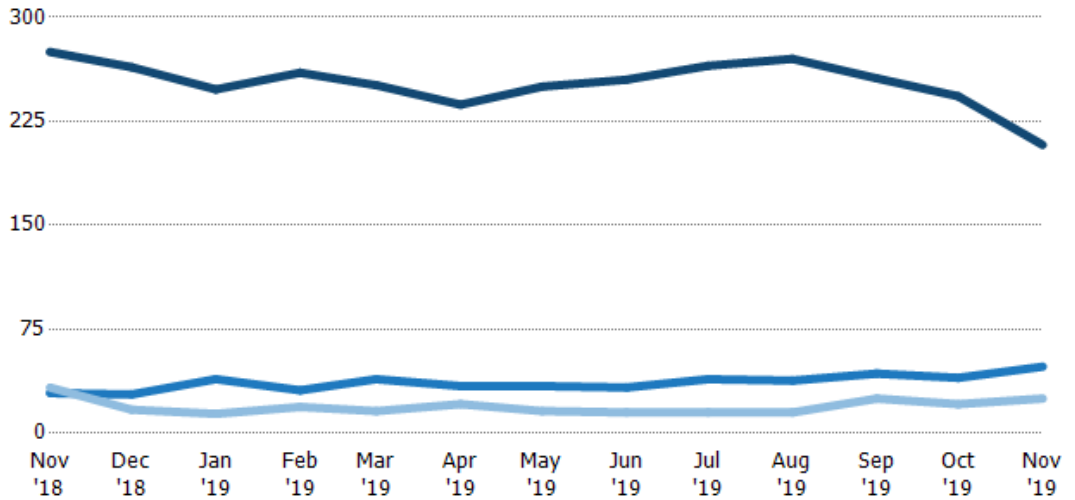
Active/Pending/Sold Units

The number of residential properties that were Active, Pending and Sold each month.

Filters Used

ZIP: East Dover, VT 05341, South Newfane, VT 05351, Wardsboro, VT 05355, West Dover, VT 05356, Wilmington, VT 05363

Property Type:
Condo/Townhouse/Apt, Single Family Residence



	Nov '18	Dec '18	Jan '19	Feb '19	Mar '19	Apr '19	May '19	Jun '19	Jul '19	Aug '19	Sep '19	Oct '19	Nov '19
Active	275	264	248	260	251	237	250	255	265	270	256	243	208
Pending	29	28	39	31	39	34	34	33	39	38	43	40	48
Sold	33	17	14	19	16	21	16	15	15	15	25	21	25

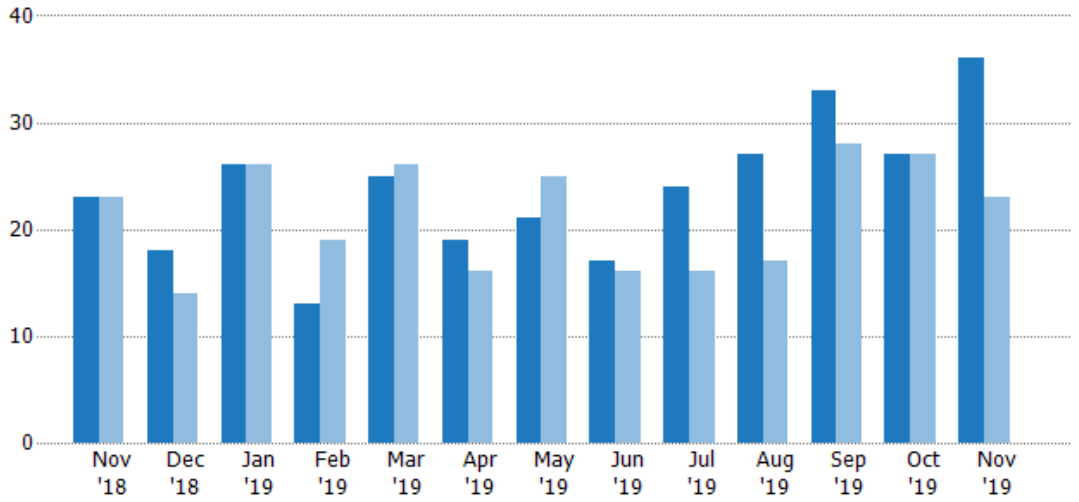
New Pending Sales

The number of residential properties with accepted offers that were added each month.

Filters Used

ZIP: East Dover, VT 05341, South Newfane, VT 05351, Wardsboro, VT 05355, West Dover, VT 05356, Wilmington, VT 05363

Property Type:
Condo/Townhouse/Apt, Single Family Residence



Month/Year	Count	% Chg.
Nov '19	36	56.5%
Nov '18	23	0%
Nov '17	23	-21.7%

	Nov '18	Dec '18	Jan '19	Feb '19	Mar '19	Apr '19	May '19	Jun '19	Jul '19	Aug '19	Sep '19	Oct '19	Nov '19
Current Year	23	18	26	13	25	19	21	17	24	27	33	27	36
Prior Year	23	14	26	19	26	16	25	16	16	17	28	27	23
Percent Change from Prior Year	0%	29%	0%	-32%	-4%	19%	-16%	6%	50%	59%	18%	0%	57%

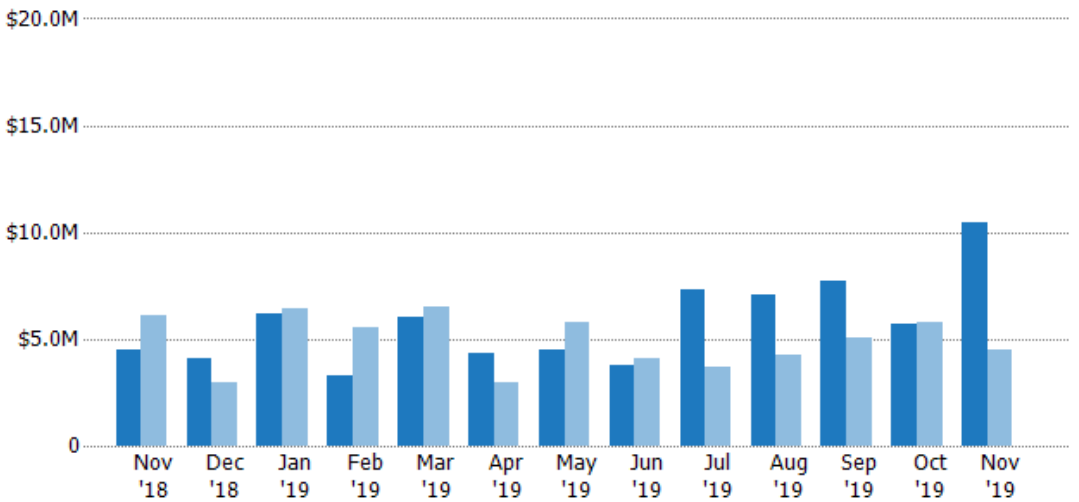
New Pending Sales Volume

The sum of the sales price of residential properties with accepted offers that were added each month.

Filters Used

ZIP: East Dover, VT 05341, South Newfane, VT 05351, Wardsboro, VT 05355, West Dover, VT 05356, Wilmington, VT 05363

Property Type:
Condo/Townhouse/Apt, Single Family Residence



Month/Year	Volume	% Chg.
Nov '19	\$10.4M	133.9%
Nov '18	\$4.46M	-26.7%
Nov '17	\$6.08M	11.1%

	Nov '18	Dec '18	Jan '19	Feb '19	Mar '19	Apr '19	May '19	Jun '19	Jul '19	Aug '19	Sep '19	Oct '19	Nov '19
Current Year	\$4.46M	\$4.1M	\$6.19M	\$3.31M	\$5.99M	\$4.35M	\$4.49M	\$3.76M	\$7.32M	\$7.09M	\$7.68M	\$5.7M	\$10.4M
Prior Year	\$6.08M	\$2.95M	\$6.47M	\$5.52M	\$6.47M	\$2.98M	\$5.78M	\$4.09M	\$3.71M	\$4.25M	\$5.06M	\$5.82M	\$4.46M
Percent Change from Prior Year	-27%	39%	-4%	-40%	-7%	46%	-22%	-8%	97%	67%	52%	-2%	134%

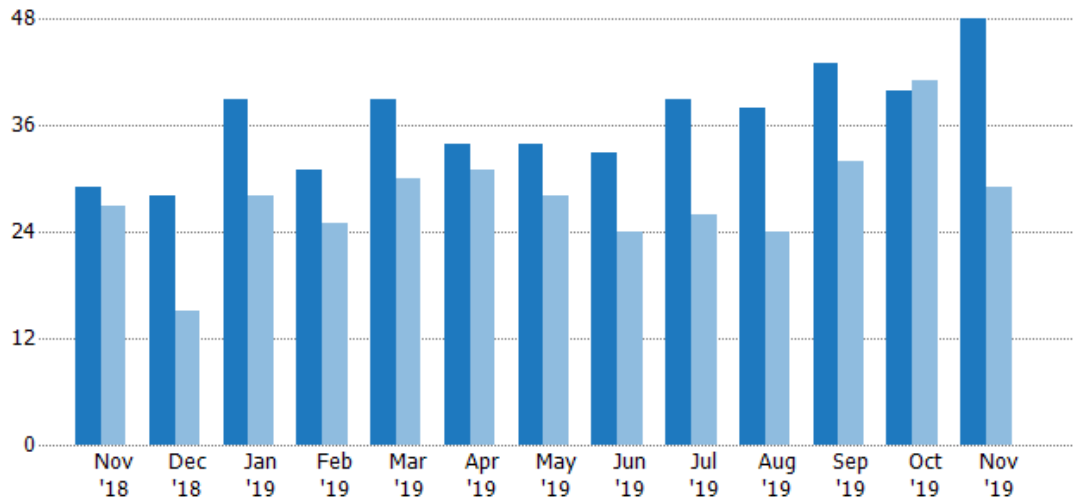
Pending Sales

The number of residential properties with accepted offers that were available at the end each month.

Filters Used

ZIP: East Dover, VT 05341, South Newfane, VT 05351, Wardsboro, VT 05355, West Dover, VT 05356, Wilmington, VT 05363
 Property Type: Condo/Townhouse/Apt, Single Family Residence

Month/Year	Count	% Chg.
Nov '19	48	65.5%
Nov '18	29	7.4%
Nov '17	27	14.8%



Current Year	29	28	39	31	39	34	34	33	39	38	43	40	48
Prior Year	27	15	28	25	30	31	28	24	26	24	32	41	29
Percent Change from Prior Year	7%	87%	39%	24%	30%	10%	21%	38%	50%	58%	34%	-2%	66%

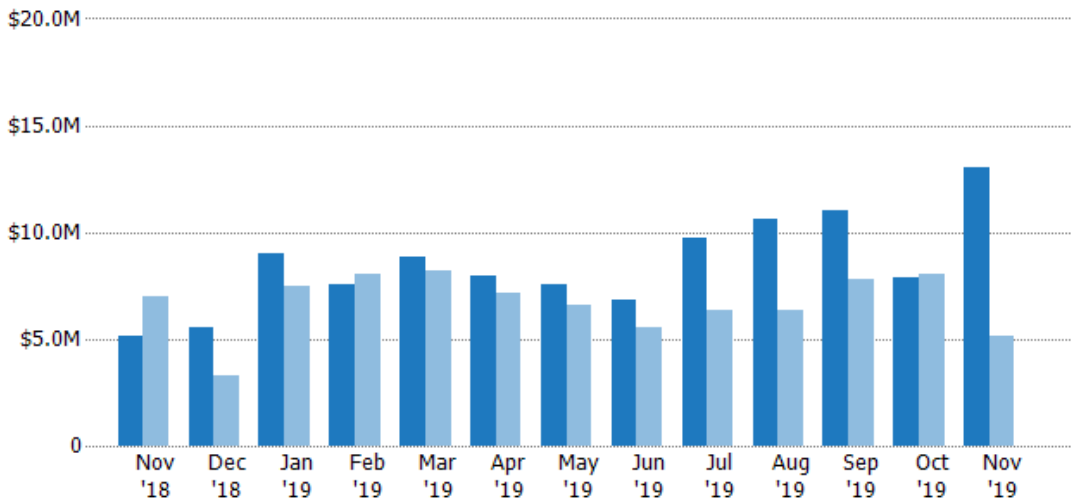
Pending Sales Volume

The sum of the sales price of residential properties with accepted offers that were available at the end of each month.

Filters Used

ZIP: East Dover, VT 05341, South Newfane, VT 05351, Wardsboro, VT 05355, West Dover, VT 05356, Wilmington, VT 05363
 Property Type: Condo/Townhouse/Apt, Single Family Residence

Month/Year	Volume	% Chg.
Nov '19	\$13M	152.7%
Nov '18	\$5.16M	-26.5%
Nov '17	\$7.03M	61.2%



Current Year	\$5.16M	\$5.52M	\$8.98M	\$7.56M	\$8.88M	\$7.92M	\$7.52M	\$6.8M	\$9.73M	\$10.6M	\$11M	\$7.89M	\$13M
Prior Year	\$7.03M	\$3.31M	\$7.48M	\$8.05M	\$8.19M	\$7.14M	\$6.59M	\$5.54M	\$6.31M	\$6.32M	\$7.79M	\$8.01M	\$5.16M
Percent Change from Prior Year	-27%	67%	20%	-6%	9%	11%	14%	23%	54%	68%	41%	-1%	153%

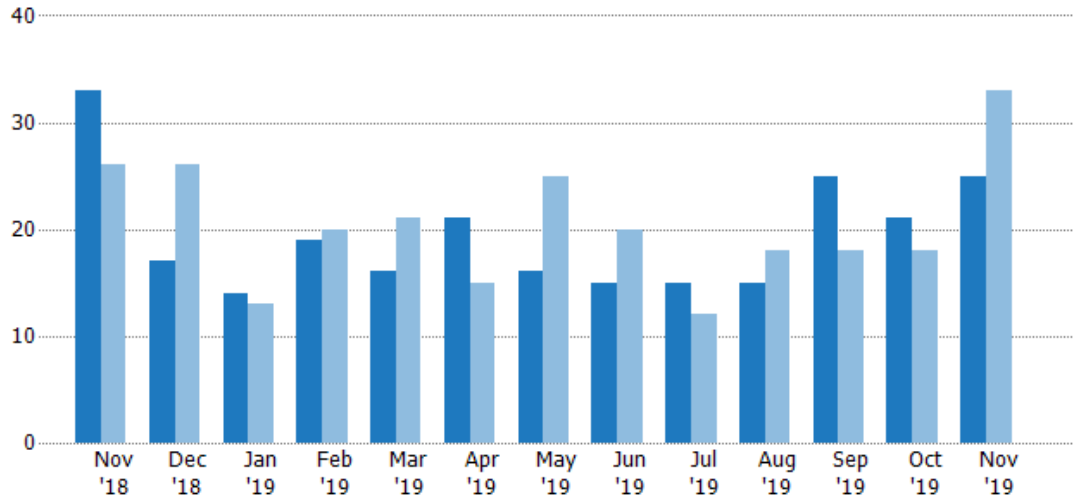
Closed Sales

The total number of residential properties sold each month.

Filters Used

ZIP: East Dover, VT 05341, South Newfane, VT 05351, Wardsboro, VT 05355, West Dover, VT 05356, Wilmington, VT 05363
 Property Type: Condo/Townhouse/Apt, Single Family Residence

Month/Year	Count	% Chg.
Nov '19	25	-24.2%
Nov '18	33	26.9%
Nov '17	26	-34.6%



Current Year	33	17	14	19	16	21	16	15	15	15	25	21	25
Prior Year	26	26	13	20	21	15	25	20	12	18	18	18	33
Percent Change from Prior Year	27%	-35%	8%	-5%	-24%	40%	-36%	-25%	25%	-17%	39%	17%	-24%

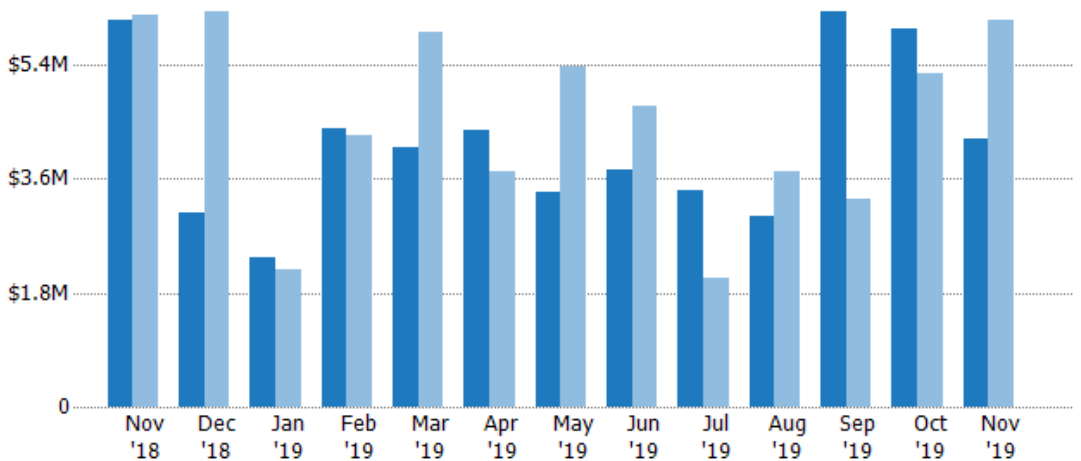
Closed Sales Volume

The sum of the sales price of residential properties sold each month.

Filters Used

ZIP: East Dover, VT 05341, South Newfane, VT 05351, Wardsboro, VT 05355, West Dover, VT 05356, Wilmington, VT 05363
 Property Type: Condo/Townhouse/Apt, Single Family Residence

Month/Year	Volume	% Chg.
Nov '19	\$4.24M	-30.4%
Nov '18	\$6.09M	-1.6%
Nov '17	\$6.19M	-2.6%



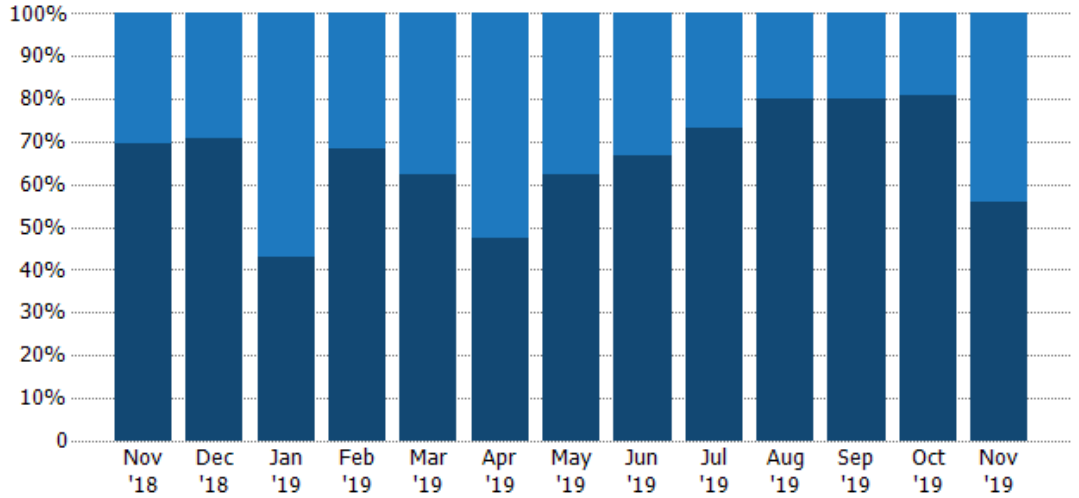
Current Year	\$6.09M	\$3.06M	\$2.37M	\$4.4M	\$4.11M	\$4.38M	\$3.4M	\$3.75M	\$3.41M	\$3M	\$6.23M	\$5.96M	\$4.24M
Prior Year	\$6.19M	\$6.24M	\$2.16M	\$4.29M	\$5.91M	\$3.72M	\$5.37M	\$4.75M	\$2.04M	\$3.72M	\$3.28M	\$5.26M	\$6.09M
Percent Change from Prior Year	-2%	-51%	10%	3%	-30%	18%	-37%	-21%	67%	-19%	90%	13%	-30%

Closed Sales by Property Type

The percentage of residential properties sold each month by property type.

Filters Used

ZIP: East Dover, VT 05341, South Newfane, VT 05351, Wardsboro, VT 05355, West Dover, VT 05356, Wilmington, VT 05363
 Property Type: Condo/Townhouse/Apt, Single Family Residence



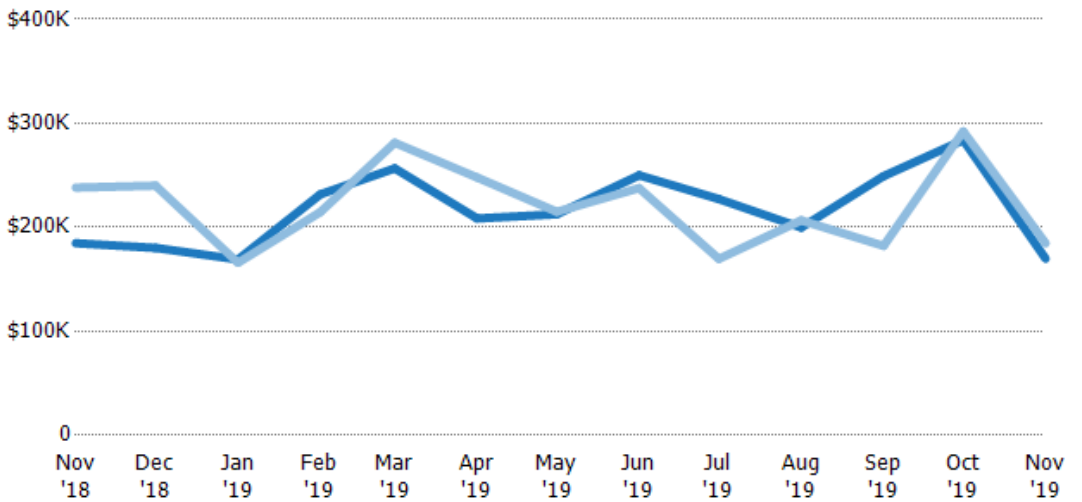
Property Type	Nov '18	Dec '18	Jan '19	Feb '19	Mar '19	Apr '19	May '19	Jun '19	Jul '19	Aug '19	Sep '19	Oct '19	Nov '19
Condo/Townhouse	30%	29%	57%	32%	38%	52%	38%	33%	27%	20%	20%	19%	44%
Single Family Residence	70%	71%	43%	68%	63%	48%	63%	67%	73%	80%	80%	81%	56%

Average Sales Price

The average sales price of the residential properties sold each month.

Filters Used

ZIP: East Dover, VT 05341, South Newfane, VT 05351, Wardsboro, VT 05355, West Dover, VT 05356, Wilmington, VT 05363
 Property Type: Condo/Townhouse/Apt, Single Family Residence



Month/Year	Price	% Chg.
Nov '19	\$170K	-8.1%
Nov '18	\$185K	-22.5%
Nov '17	\$238K	48.9%

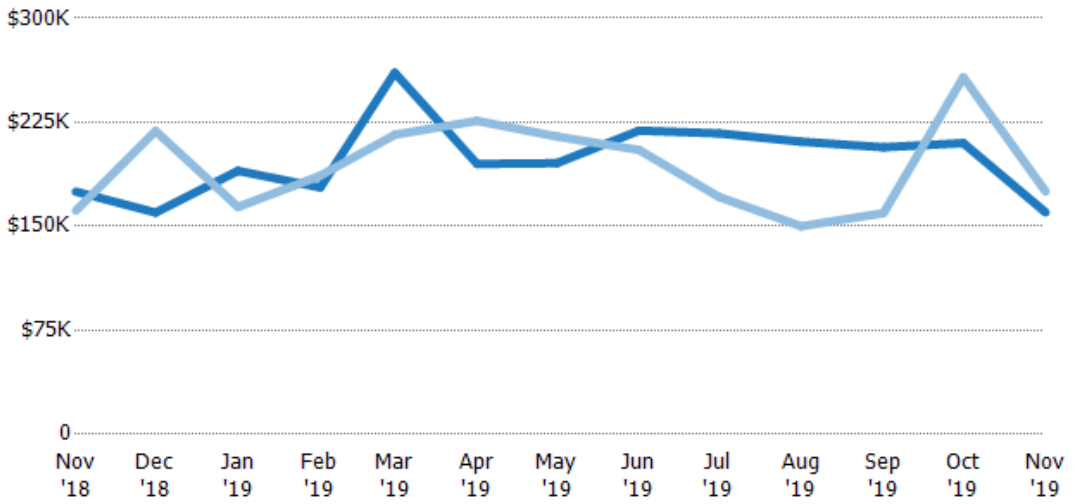
Property Type	Nov '18	Dec '18	Jan '19	Feb '19	Mar '19	Apr '19	May '19	Jun '19	Jul '19	Aug '19	Sep '19	Oct '19	Nov '19
Current Year	\$185K	\$180K	\$169K	\$232K	\$257K	\$209K	\$213K	\$250K	\$227K	\$200K	\$249K	\$284K	\$170K
Prior Year	\$238K	\$240K	\$166K	\$215K	\$281K	\$248K	\$215K	\$238K	\$170K	\$207K	\$182K	\$292K	\$185K
Percent Change from Prior Year	-22%	-25%	2%	8%	-9%	-16%	-1%	5%	34%	-3%	37%	-3%	-8%

Median Sales Price

The median sales price of the residential properties sold each month.

Filters Used

ZIP: East Dover, VT 05341, South Newfane, VT 05351, Wardsboro, VT 05355, West Dover, VT 05356, Wilmington, VT 05363
 Property Type: Condo/Townhouse/Apt, Single Family Residence



Month/Year	Price	% Chg.
Nov '19	\$160K	-8.6%
Nov '18	\$175K	8.5%
Nov '17	\$161K	55%

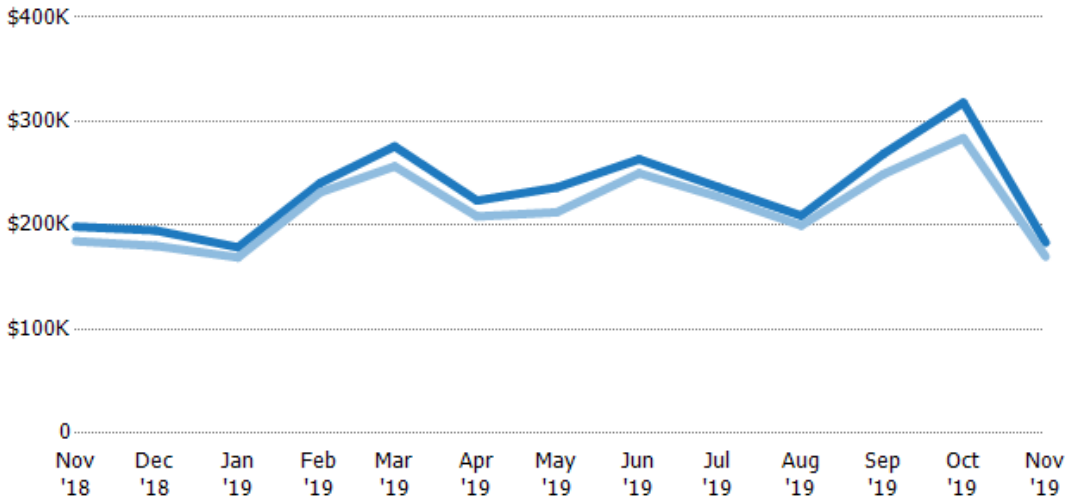
Month	Current Year	Prior Year	Percent Change from Prior Year
Nov '18	\$175K	\$161K	9%
Dec '18	\$160K	\$219K	-27%
Jan '19	\$190K	\$164K	16%
Feb '19	\$178K	\$187K	-5%
Mar '19	\$261K	\$216K	21%
Apr '19	\$195K	\$226K	-14%
May '19	\$196K	\$215K	-9%
Jun '19	\$219K	\$205K	7%
Jul '19	\$217K	\$171K	27%
Aug '19	\$211K	\$150K	41%
Sep '19	\$207K	\$160K	30%
Oct '19	\$210K	\$258K	-18%
Nov '19	\$160K	\$175K	-9%

Average Sales Price vs Average Listing Price

The average sales price as a percentage of the average listing price for properties sold each month.

Filters Used

ZIP: East Dover, VT 05341, South Newfane, VT 05351, Wardsboro, VT 05355, West Dover, VT 05356, Wilmington, VT 05363
 Property Type: Condo/Townhouse/Apt, Single Family Residence



Month/Year	Avg List Price	Avg Sales Price	Avg Sales Price as a % of Avg List Price
Nov '19	\$183K	\$170K	93%
Nov '18	\$199K	\$185K	93%
Nov '17	\$183K	\$170K	93%

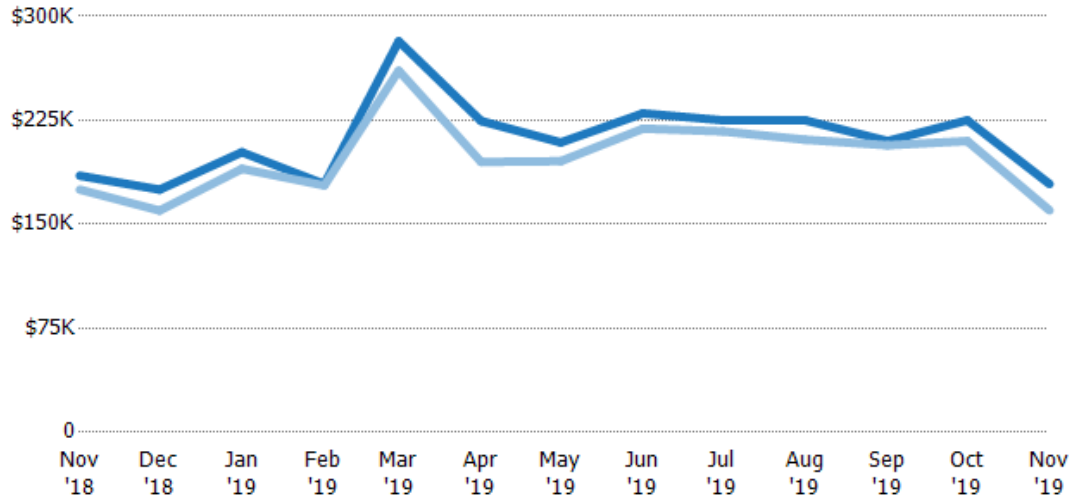
Month	Avg List Price	Avg Sales Price	Avg Sales Price as a % of Avg List Price
Nov '18	\$199K	\$185K	93%
Dec '18	\$195K	\$180K	92%
Jan '19	\$179K	\$169K	95%
Feb '19	\$241K	\$232K	96%
Mar '19	\$276K	\$257K	93%
Apr '19	\$224K	\$209K	93%
May '19	\$236K	\$213K	90%
Jun '19	\$263K	\$250K	95%
Jul '19	\$237K	\$227K	96%
Aug '19	\$209K	\$200K	95%
Sep '19	\$269K	\$249K	93%
Oct '19	\$318K	\$284K	89%
Nov '19	\$183K	\$170K	93%

Median Sales Price vs Median Listing Price

The median sales price as a percentage of the median listing price for properties sold each month.

Filters Used

ZIP: East Dover, VT 05341, South Newfane, VT 05351, Wardsboro, VT 05355, West Dover, VT 05356, Wilmington, VT 05363
 Property Type: Condo/Townhouse/Apt, Single Family Residence



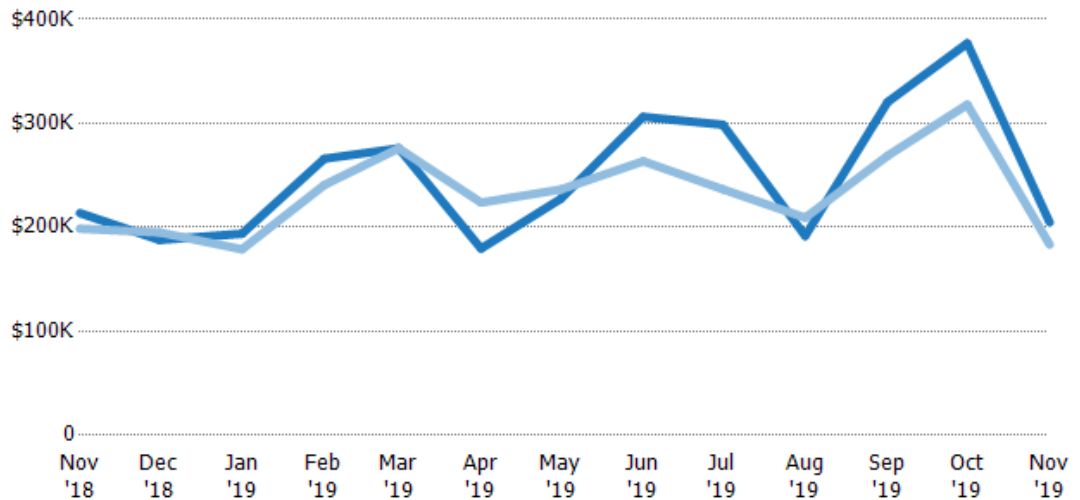
Median List Price	\$185K	\$175K	\$202K	\$179K	\$282K	\$225K	\$209K	\$230K	\$225K	\$225K	\$210K	\$225K	\$179K
Median Sales Price	\$175K	\$160K	\$190K	\$178K	\$261K	\$195K	\$196K	\$219K	\$217K	\$211K	\$207K	\$210K	\$160K
Med Sales Price as a % of Med List Price	95%	91%	94%	99%	92%	87%	94%	95%	96%	94%	99%	93%	89%

Average Sales Price vs Average Est Value

The average sales price as a percentage of the average AVM or RVM® valuation estimate for properties sold each month.

Filters Used

ZIP: East Dover, VT 05341, South Newfane, VT 05351, Wardsboro, VT 05355, West Dover, VT 05356, Wilmington, VT 05363
 Property Type: Condo/Townhouse/Apt, Single Family Residence



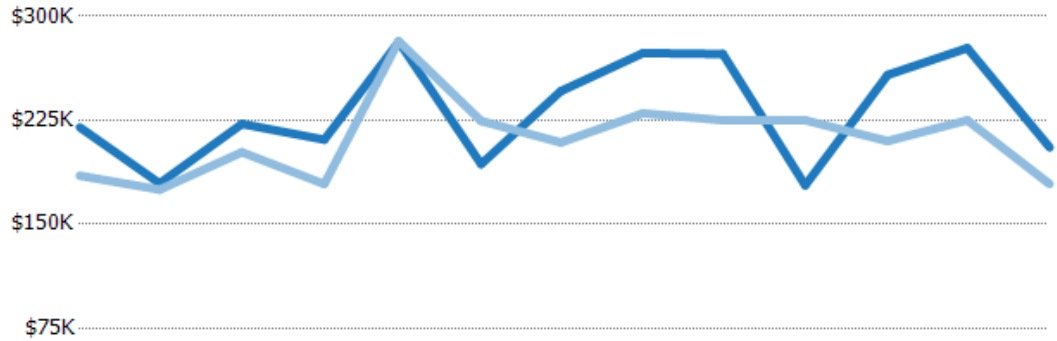
Avg Est Value	\$214K	\$188K	\$194K	\$266K	\$276K	\$180K	\$227K	\$306K	\$299K	\$192K	\$320K	\$377K	\$205K
Avg Sales Price	\$199K	\$195K	\$179K	\$241K	\$276K	\$224K	\$236K	\$263K	\$237K	\$209K	\$269K	\$318K	\$183K
Avg Sales Price as a % of Avg Est Value	93%	104%	92%	91%	100%	125%	104%	86%	79%	109%	84%	84%	90%

Median Sales Price vs Median Est Value

The median sales price as a percent of the median AVM or RVM® valuation estimate for properties sold each month.

Filters Used

ZIP: East Dover, VT 05341, South Newfane, VT 05351, Wardsboro, VT 05355, West Dover, VT 05356, Wilmington, VT 05363
 Property Type: Condo/Townhouse/Apt, Single Family Residence



	Nov '18	Dec '18	Jan '19	Feb '19	Mar '19	Apr '19	May '19	Jun '19	Jul '19	Aug '19	Sep '19	Oct '19	Nov '19
Median Est Value	\$220K	\$180K	\$222K	\$211K	\$282K	\$193K	\$246K	\$273K	\$273K	\$178K	\$258K	\$277K	\$205K
Median Sales Price	\$185K	\$175K	\$202K	\$179K	\$282K	\$225K	\$209K	\$230K	\$225K	\$225K	\$210K	\$225K	\$179K
Med Sales Price as a % of Med Est Value	84%	97%	91%	85%	100%	116%	85%	84%	82%	126%	81%	81%	87%