

Summary of Key Listing and Sales Metrics

A summary of the key metrics selected to be included in the report. MLS sources where licensed.

Key Metrics	Mar 2019	Mar 2018	+ / -	YTD 2019	YTD 2018	+ / -
Listing Activity Charts Metrics						
New Listing Count	7	9	-22.2%	24	24	+/-
New Listing Volume	\$1,927,700	\$2,236,700	-13.8%	\$5,852,900	\$6,390,900	-8.4%
Active Listing Count	49	60	-18.3%	N/A	N/A	
Active Listing Volume	\$12,843,300	\$16,655,886	-22.9%	N/A	N/A	
Average Listing Price	\$262,108	\$277,598	-5.6%	\$261,908	\$272,874	-4%
Median Listing Price	\$229,900	\$232,450	-1.1%	\$229,615	\$223,983	+2.5%
Median Days in RPR	153	184.5	-17.1%	154.05	178.5	-13.7%
Months of Inventory	9.8	6.7	+47%	8.6	10.6	-19.2%
Absorption Rate	10.2%	15%	-4.8%	11.7%	9.44%	+2.3%
Sales Activity Charts Metrics						
New Pending Sales Count	15	8	+87.5%	30	19	+57.9%
New Pending Sales Volume	\$3,857,658	\$1,522,900	+153.3%	\$7,098,658	\$3,885,800	+82.7%
Pending Sales Count	20	10	+100%	N/A	N/A	
Pending Sales Volume	\$4,992,158	\$1,917,900	+160.3%	N/A	N/A	
Closed Sales Count	9	8	+12.5%	19	20	-5%
Closed Sales Volume	\$1,898,935	\$2,189,700	-13.3%	\$4,235,502	\$4,719,288	-10.3%
Average Sales Price	\$210,993	\$273,713	-22.9%	\$222,921	\$235,964	-5.5%
Median Sales Price	\$192,500	\$226,350	-15%	\$188,289	\$188,970	-0.4%

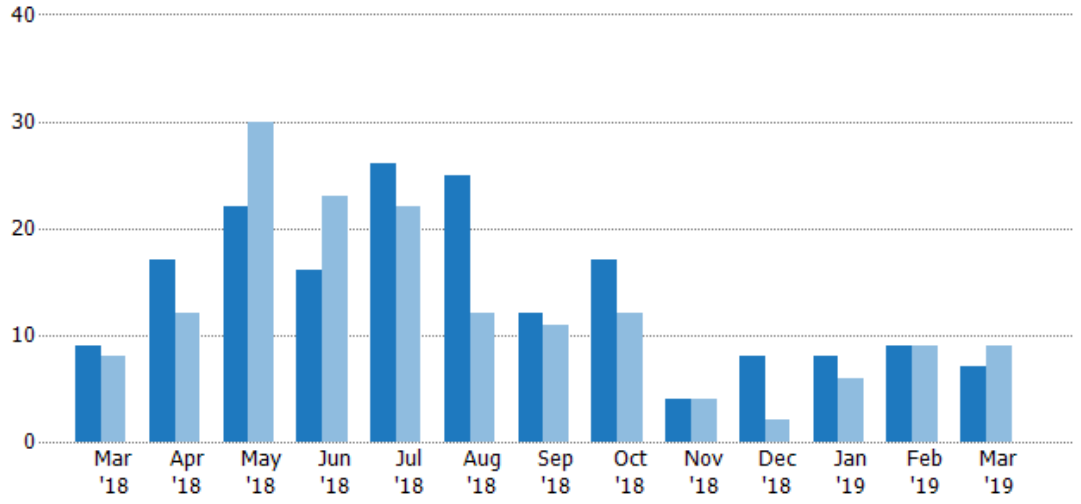
New Listings

The number of new residential listings that were added each month.

Filters Used

ZIP: Brattleboro, VT 05301, Brattleboro, VT 05302, Brattleboro, VT 05303, Brattleboro, VT 05304
 Property Type: Condo/Townhouse/Apt, Single Family Residence

Month/Year	Count	% Chg.
Mar '19	7	-22.2%
Mar '18	9	12.5%
Mar '17	8	0%



Current Year	9	17	22	16	26	25	12	17	4	8	8	9	7
Prior Year	8	12	30	23	22	12	11	12	4	2	6	9	9
Percent Change from Prior Year	13%	42%	-27%	-30%	18%	108%	9%	42%	0%	300%	33%	0%	-22%

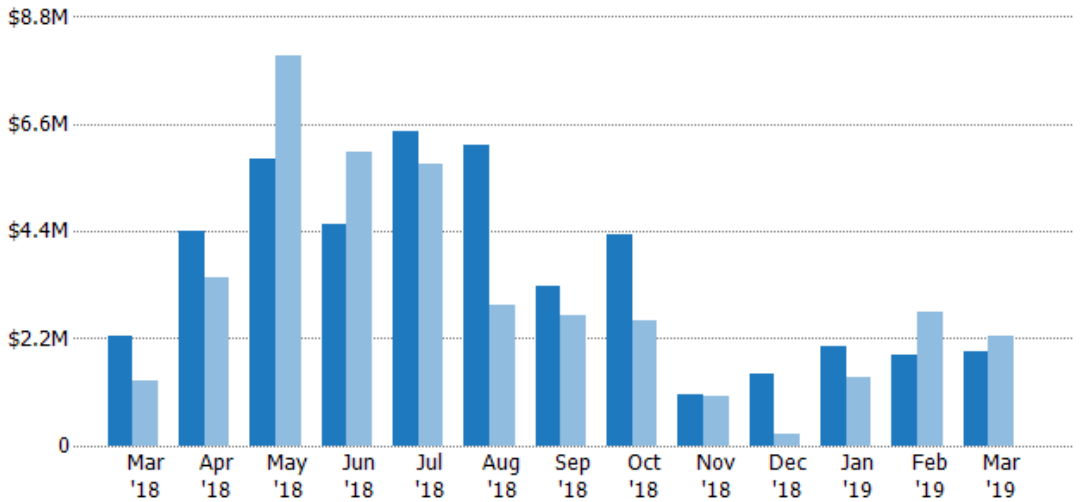
New Listing Volume

The sum of the listing price of residential listings that were added each month.

Filters Used

ZIP: Brattleboro, VT 05301, Brattleboro, VT 05302, Brattleboro, VT 05303, Brattleboro, VT 05304
 Property Type: Condo/Townhouse/Apt, Single Family Residence

Month/Year	Volume	% Chg.
Mar '19	\$1.93M	-13.8%
Mar '18	\$2.24M	66%
Mar '17	\$1.35M	74.8%



Current Year	\$2.24M	\$4.42M	\$5.89M	\$4.54M	\$6.45M	\$6.18M	\$3.29M	\$4.35M	\$1.07M	\$1.47M	\$2.05M	\$1.87M	\$1.93M
Prior Year	\$1.35M	\$3.47M	\$8.02M	\$6.01M	\$5.77M	\$2.88M	\$2.66M	\$2.55M	\$1.04M	\$250K	\$1.39M	\$2.76M	\$2.24M
Percent Change from Prior Year	66%	27%	-27%	-24%	12%	115%	24%	70%	3%	487%	47%	-32%	-14%

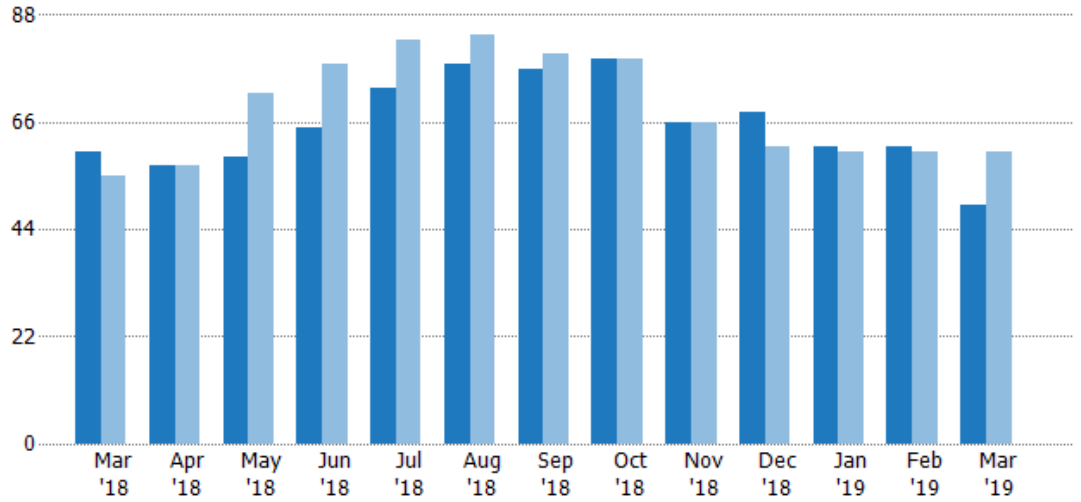
Active Listings

The number of active residential listings at the end of each month.

Filters Used

ZIP: Brattleboro, VT 05301,
Brattleboro, VT 05302, Brattleboro,
VT 05303, Brattleboro, VT 05304
Property Type:
Condo/Townhouse/Apt, Single
Family Residence

Month/ Year	Count	% Chg.
Mar '19	49	-18.3%
Mar '18	60	9.1%
Mar '17	55	40%



Current Year	60	57	59	65	73	78	77	79	66	68	61	61	49
Prior Year	55	57	72	78	83	84	80	79	66	61	60	60	60
Percent Change from Prior Year	9%	0%	-18%	-17%	-12%	-7%	-4%	0%	0%	11%	2%	2%	-18%

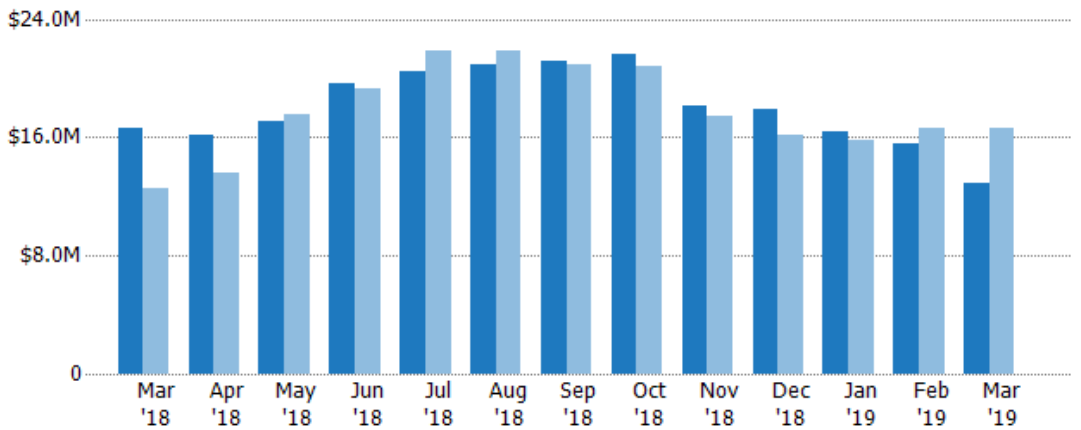
Active Listing Volume

The sum of the listing price of active residential listings at the end of each month.

Filters Used

ZIP: Brattleboro, VT 05301,
Brattleboro, VT 05302, Brattleboro,
VT 05303, Brattleboro, VT 05304
Property Type:
Condo/Townhouse/Apt, Single
Family Residence

Month/ Year	Volume	% Chg.
Mar '19	\$12.8M	-22.9%
Mar '18	\$16.7M	33.2%
Mar '17	\$12.5M	82.6%



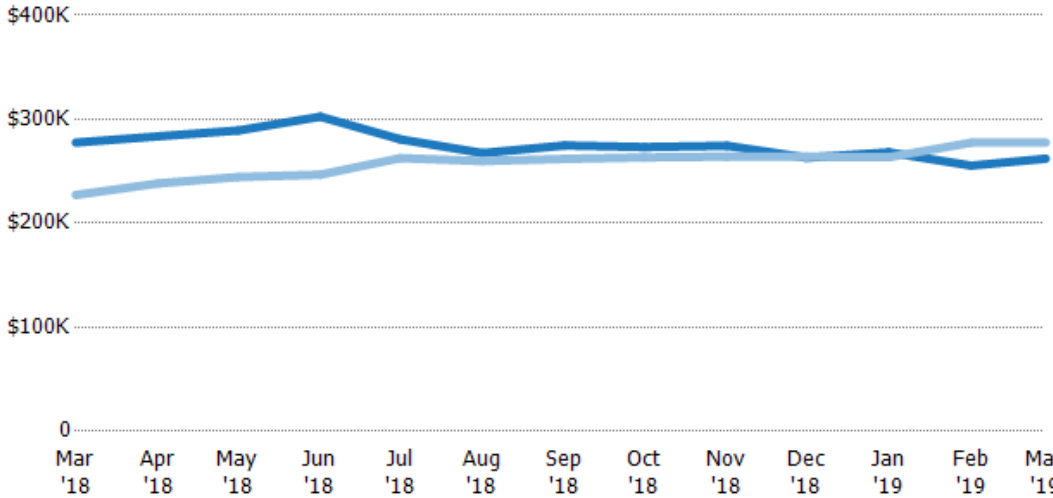
Current Year	\$16.7M	\$16.2M	\$17.1M	\$19.7M	\$20.5M	\$20.9M	\$21.2M	\$21.6M	\$18.1M	\$17.9M	\$16.4M	\$15.6M	\$12.8M
Prior Year	\$12.5M	\$13.6M	\$17.6M	\$19.2M	\$21.8M	\$21.8M	\$20.9M	\$20.8M	\$17.4M	\$16.1M	\$15.8M	\$16.7M	\$16.7M
Percent Change from Prior Year	33%	19%	-3%	2%	-6%	-4%	1%	4%	4%	11%	3%	-6%	-23%

Average Listing Price

The average listing price of active residential listings at the end of each month.

Filters Used

ZIP: Brattleboro, VT 05301, Brattleboro, VT 05302, Brattleboro, VT 05303, Brattleboro, VT 05304
 Property Type: Condo/Townhouse/Apt, Single Family Residence



Month/Year	Price	% Chg.
Mar '19	\$262K	-5.6%
Mar '18	\$278K	22.1%
Mar '17	\$227K	30.4%

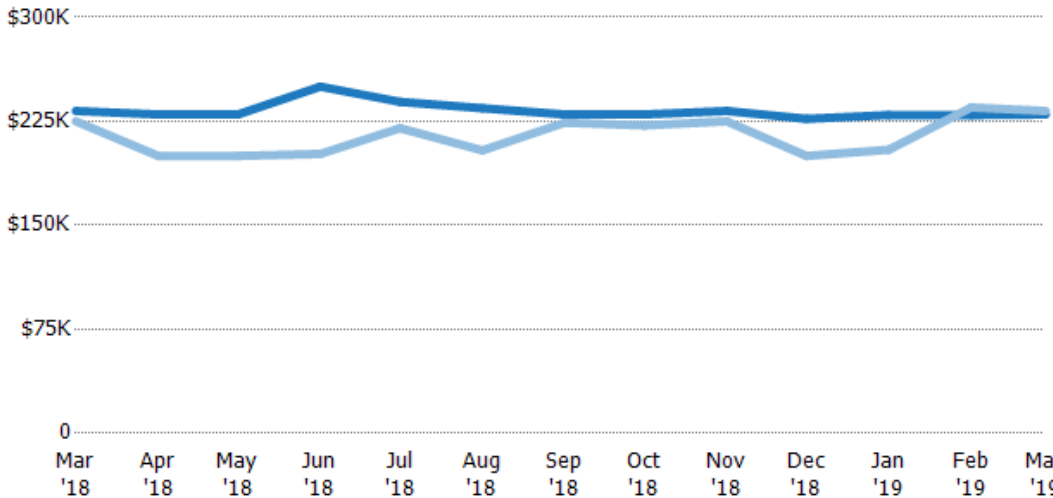
Current Year	\$278K	\$284K	\$289K	\$302K	\$281K	\$268K	\$275K	\$273K	\$275K	\$263K	\$268K	\$255K	\$262K
Prior Year	\$227K	\$238K	\$244K	\$247K	\$263K	\$260K	\$262K	\$263K	\$264K	\$264K	\$263K	\$278K	\$278K
Percent Change from Prior Year	22%	19%	18%	23%	7%	3%	5%	4%	4%	0%	2%	-8%	-6%

Median Listing Price

The median listing price of active residential listings at the end of each month.

Filters Used

ZIP: Brattleboro, VT 05301, Brattleboro, VT 05302, Brattleboro, VT 05303, Brattleboro, VT 05304
 Property Type: Condo/Townhouse/Apt, Single Family Residence



Month/Year	Price	% Chg.
Mar '19	\$230K	-1.1%
Mar '18	\$232K	3.3%
Mar '17	\$225K	-4.4%

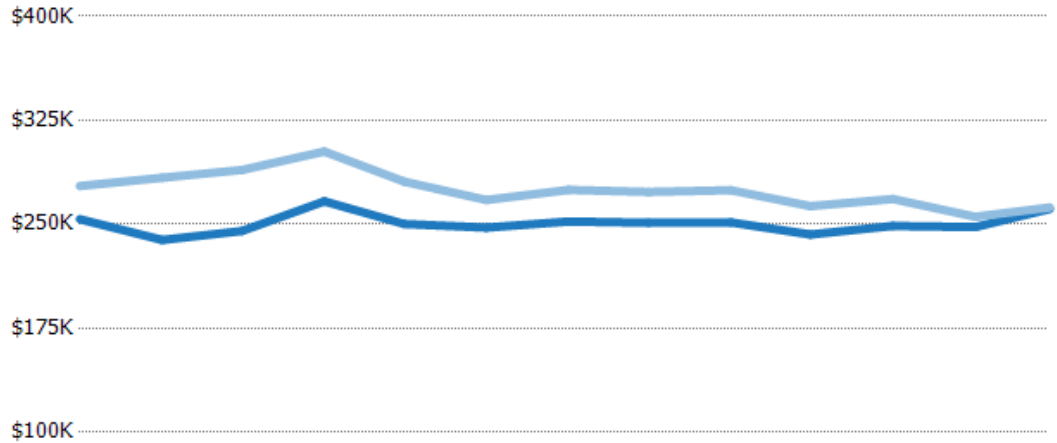
Current Year	\$232K	\$230K	\$230K	\$250K	\$239K	\$234K	\$230K	\$230K	\$232K	\$227K	\$230K	\$230K	\$230K
Prior Year	\$225K	\$200K	\$200K	\$202K	\$220K	\$204K	\$224K	\$222K	\$225K	\$200K	\$205K	\$235K	\$232K
Percent Change from Prior Year	3%	15%	15%	24%	9%	15%	3%	4%	3%	13%	12%	-2%	-1%

Average Listing Price vs Average Est Value

The average listing price as a percentage of the average AVM or RVM® valuation estimate for active listings each month.

Filters Used

ZIP: Brattleboro, VT 05301,
Brattleboro, VT 05302, Brattleboro,
VT 05303, Brattleboro, VT 05304
Property Type:
Condo/Townhouse/Apt, Single
Family Residence



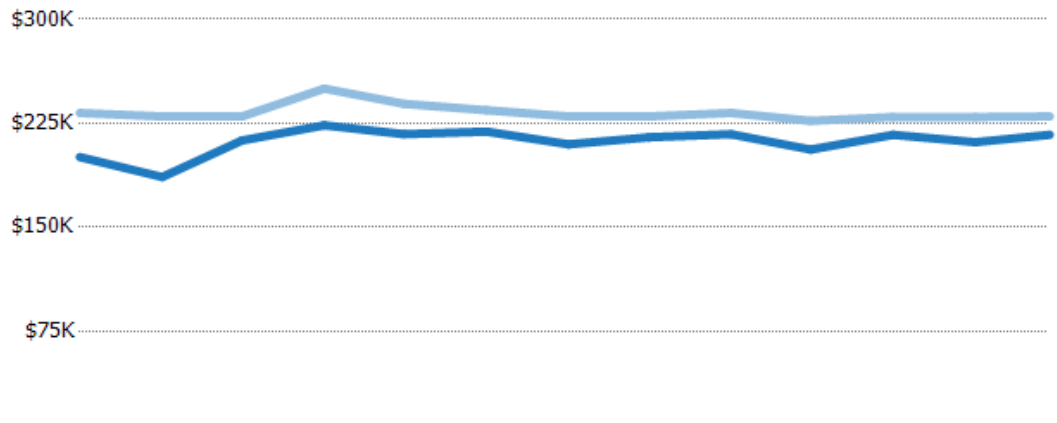
	Mar '18	Apr '18	May '18	Jun '18	Jul '18	Aug '18	Sep '18	Oct '18	Nov '18	Dec '18	Jan '19	Feb '19	Mar '19
Avg Est Value	\$254K	\$239K	\$245K	\$267K	\$250K	\$248K	\$252K	\$251K	\$251K	\$243K	\$249K	\$248K	\$261K
Avg Listing Price	\$278K	\$284K	\$289K	\$302K	\$281K	\$268K	\$275K	\$273K	\$275K	\$263K	\$268K	\$255K	\$262K
Avg Listing Price as a % of Avg Est Value	109%	119%	118%	113%	112%	108%	109%	109%	109%	108%	108%	103%	100%

Median Listing Price vs Median Est Value

The median listing price as a percentage of the median AVM or RVM® valuation estimate for active listings each month.

Filters Used

ZIP: Brattleboro, VT 05301,
Brattleboro, VT 05302, Brattleboro,
VT 05303, Brattleboro, VT 05304
Property Type:
Condo/Townhouse/Apt, Single
Family Residence



	Mar '18	Apr '18	May '18	Jun '18	Jul '18	Aug '18	Sep '18	Oct '18	Nov '18	Dec '18	Jan '19	Feb '19	Mar '19
Median Est Value	\$201K	\$186K	\$213K	\$224K	\$217K	\$219K	\$210K	\$215K	\$217K	\$206K	\$217K	\$211K	\$217K
Median Listing Price	\$232K	\$230K	\$230K	\$250K	\$239K	\$234K	\$230K	\$230K	\$232K	\$227K	\$230K	\$230K	\$230K
Med Listing Price as a % of Med Est Value	116%	123%	108%	112%	110%	107%	110%	107%	107%	110%	106%	109%	106%

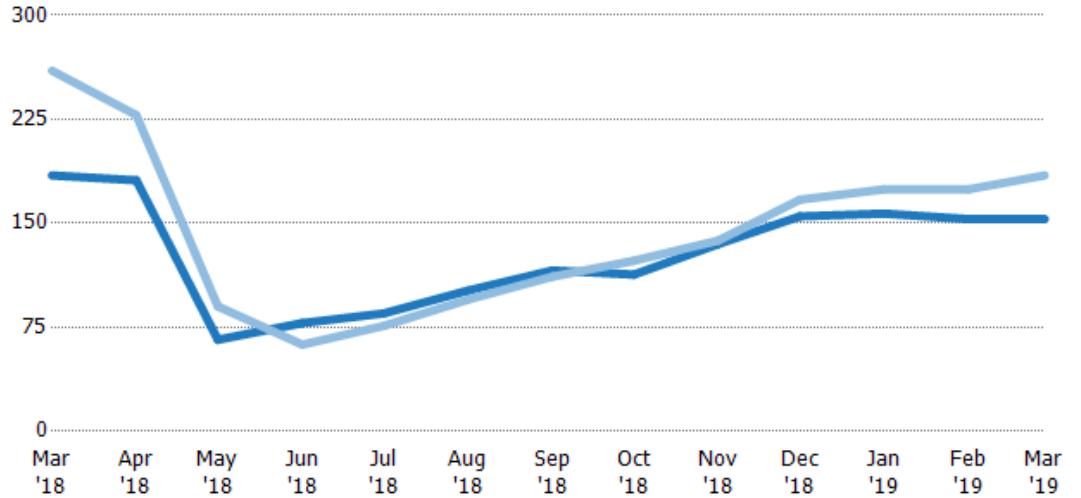
Median Days in RPR

The median number of days between when residential properties are first displayed as active listings in RPR and when accepted offers have been noted in RPR.

Filters Used

ZIP: Brattleboro, VT 05301, Brattleboro, VT 05302, Brattleboro, VT 05303, Brattleboro, VT 05304
 Property Type: Condo/Townhouse/Apt, Single Family Residence

Month/Year	Days	% Chg.
Mar '19	153	-17.1%
Mar '18	185	-29%
Mar '17	260	-10.8%



	Mar '18	Apr '18	May '18	Jun '18	Jul '18	Aug '18	Sep '18	Oct '18	Nov '18	Dec '18	Jan '19	Feb '19	Mar '19
Current Year	185	181	66	78	85	102	116	113	135	155	157	153	153
Prior Year	260	228	90	62.5	76	95	112	123	138	167	175	175	185
Percent Change from Prior Year	-29%	-21%	-27%	25%	12%	7%	4%	-8%	-2%	-7%	-10%	-12%	-17%

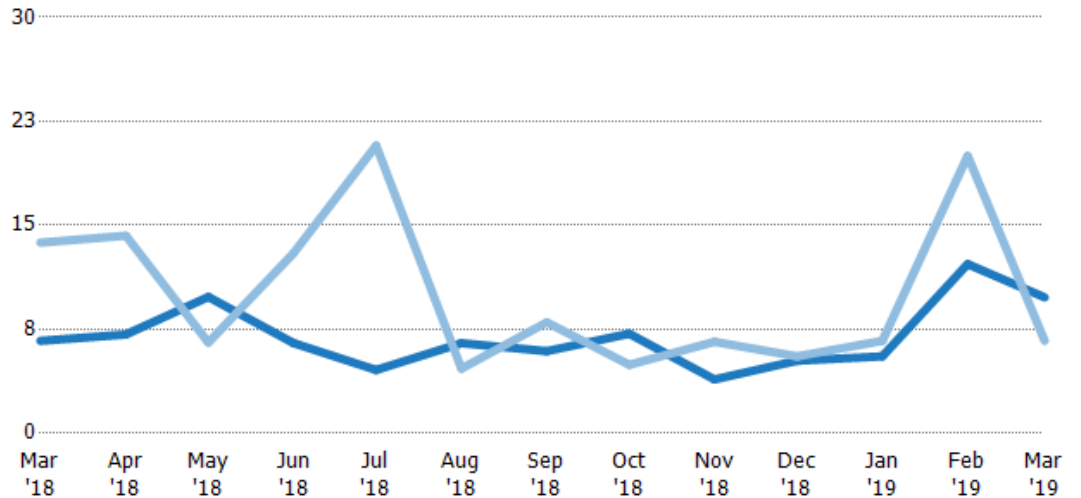
Months of Inventory

The number of months it would take to exhaust active listings at the current sales rate.

Filters Used

ZIP: Brattleboro, VT 05301, Brattleboro, VT 05302, Brattleboro, VT 05303, Brattleboro, VT 05304
 Property Type: Condo/Townhouse/Apt, Single Family Residence

Month/Year	Months	% Chg.
Mar '19	9.8	47%
Mar '18	6.67	-51.5%
Mar '17	13.8	12%



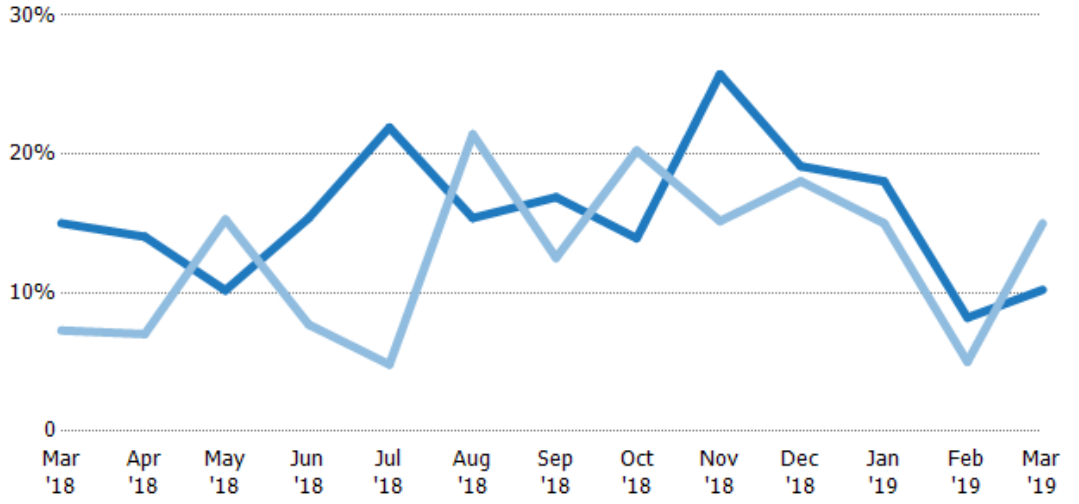
	Mar '18	Apr '18	May '18	Jun '18	Jul '18	Aug '18	Sep '18	Oct '18	Nov '18	Dec '18	Jan '19	Feb '19	Mar '19
Current Year	6.67	7.13	9.83	6.5	4.56	6.5	5.92	7.18	3.88	5.23	5.55	12.2	9.8
Prior Year	13.8	14.3	6.55	13	20.8	4.67	8	4.94	6.6	5.55	6.67	20	6.67
Percent Change from Prior Year	-52%	-50%	50%	-50%	-78%	39%	-26%	45%	-41%	-6%	-17%	-39%	47%

Absorption Rate

The percentage of inventory sold per month.

Filters Used

ZIP: Brattleboro, VT 05301, Brattleboro, VT 05302, Brattleboro, VT 05303, Brattleboro, VT 05304
 Property Type: Condo/Townhouse/Apt, Single Family Residence



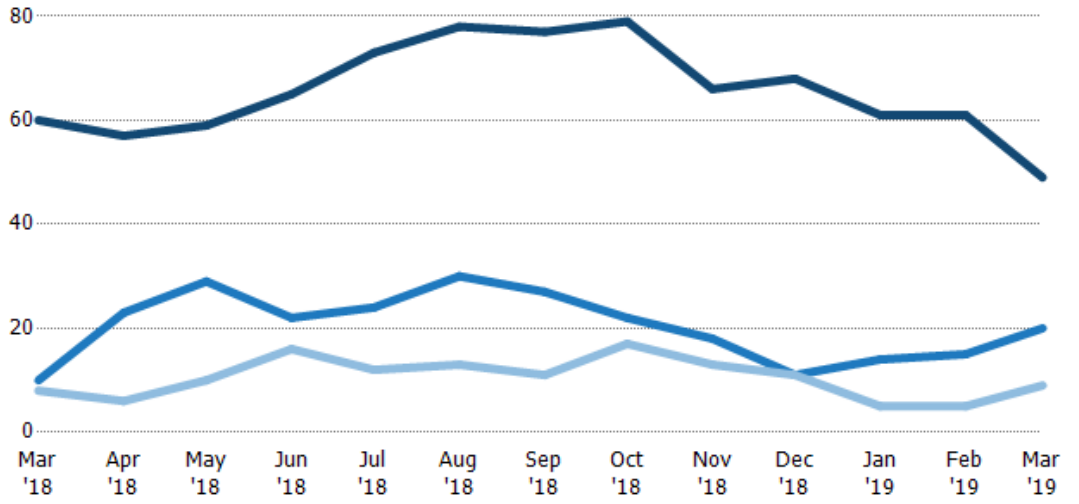
	Mar '18	Apr '18	May '18	Jun '18	Jul '18	Aug '18	Sep '18	Oct '18	Nov '18	Dec '18	Jan '19	Feb '19	Mar '19
Current Year	15%	14%	10%	15%	22%	15%	17%	14%	26%	19%	18%	8%	10%
Prior Year	7%	7%	15%	8%	5%	21%	13%	20%	15%	18%	15%	5%	15%
Change from Prior Year	-8%	-7%	5%	-8%	-17%	6%	-4%	6%	-11%	-1%	-3%	-3%	5%

Active/Pending/Sold Units

The number of residential properties that were Active, Pending and Sold each month.

Filters Used

ZIP: Brattleboro, VT 05301, Brattleboro, VT 05302, Brattleboro, VT 05303, Brattleboro, VT 05304
 Property Type: Condo/Townhouse/Apt, Single Family Residence



	Mar '18	Apr '18	May '18	Jun '18	Jul '18	Aug '18	Sep '18	Oct '18	Nov '18	Dec '18	Jan '19	Feb '19	Mar '19
Active	60	57	59	65	73	78	77	79	66	68	61	61	49
Pending	10	23	29	22	24	30	27	22	18	11	14	15	20
Sold	8	6	10	16	12	13	11	17	13	11	5	5	9

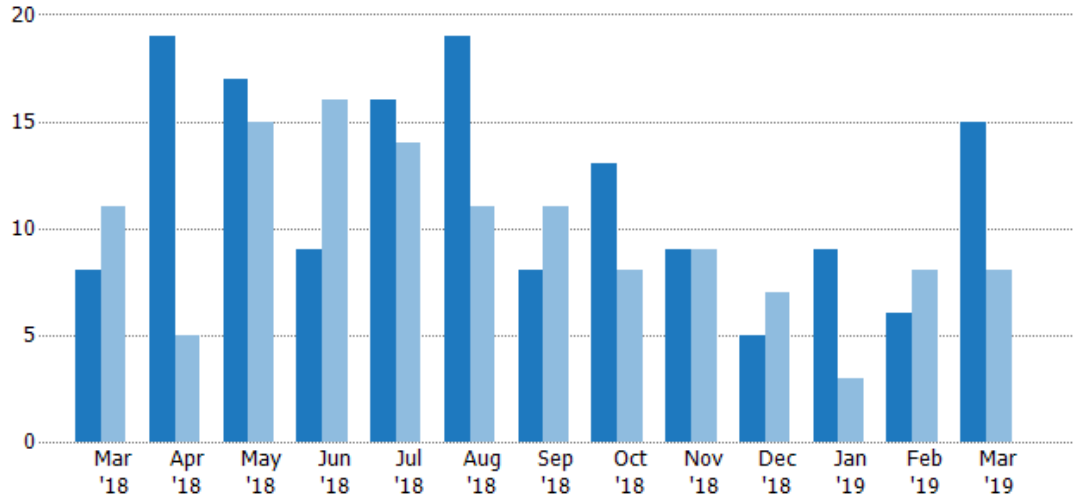
New Pending Sales

The number of residential properties with accepted offers that were added each month.

Filters Used

ZIP: Brattleboro, VT 05301, Brattleboro, VT 05302, Brattleboro, VT 05303, Brattleboro, VT 05304
 Property Type: Condo/Townhouse/Apt, Single Family Residence

Month/Year	Count	% Chg.
Mar '19	15	87.5%
Mar '18	8	-27.3%
Mar '17	11	-9.1%



Current Year	8	19	17	9	16	19	8	13	9	5	9	6	15
Prior Year	11	5	15	16	14	11	11	8	9	7	3	8	8
Percent Change from Prior Year	-27%	280%	13%	-44%	14%	73%	-27%	63%	0%	-29%	200%	-25%	88%

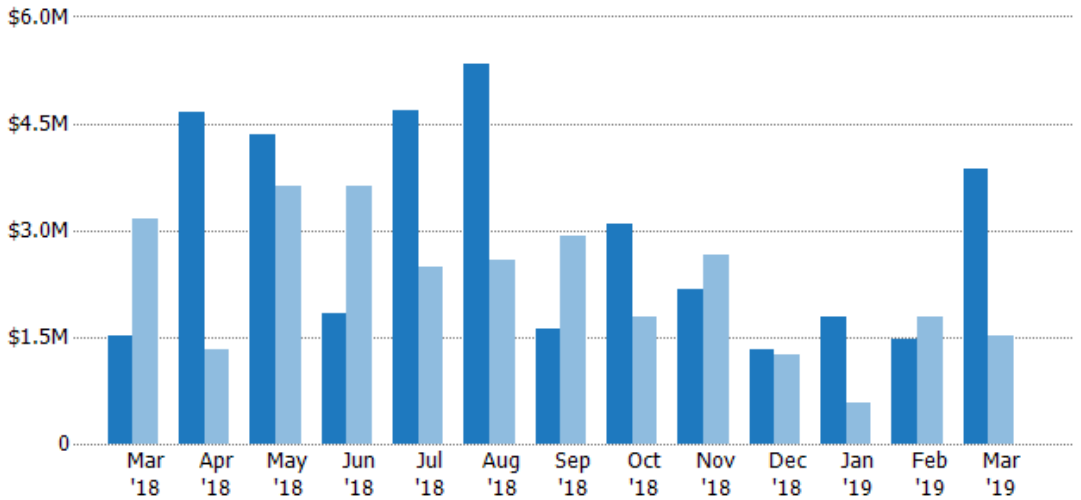
New Pending Sales Volume

The sum of the sales price of residential properties with accepted offers that were added each month.

Filters Used

ZIP: Brattleboro, VT 05301, Brattleboro, VT 05302, Brattleboro, VT 05303, Brattleboro, VT 05304
 Property Type: Condo/Townhouse/Apt, Single Family Residence

Month/Year	Volume	% Chg.
Mar '19	\$3.86M	153.3%
Mar '18	\$1.52M	-51.8%
Mar '17	\$3.16M	-45.8%



Current Year	\$1.52M	\$4.66M	\$4.35M	\$1.84M	\$4.69M	\$5.34M	\$1.62M	\$3.08M	\$2.17M	\$1.32M	\$1.77M	\$1.47M	\$3.86M
Prior Year	\$3.16M	\$1.33M	\$3.62M	\$3.62M	\$2.48M	\$2.57M	\$2.91M	\$1.79M	\$2.65M	\$1.26M	\$570K	\$1.79M	\$1.52M
Percent Change from Prior Year	-52%	251%	20%	-49%	89%	108%	-44%	72%	-18%	5%	211%	-18%	153%

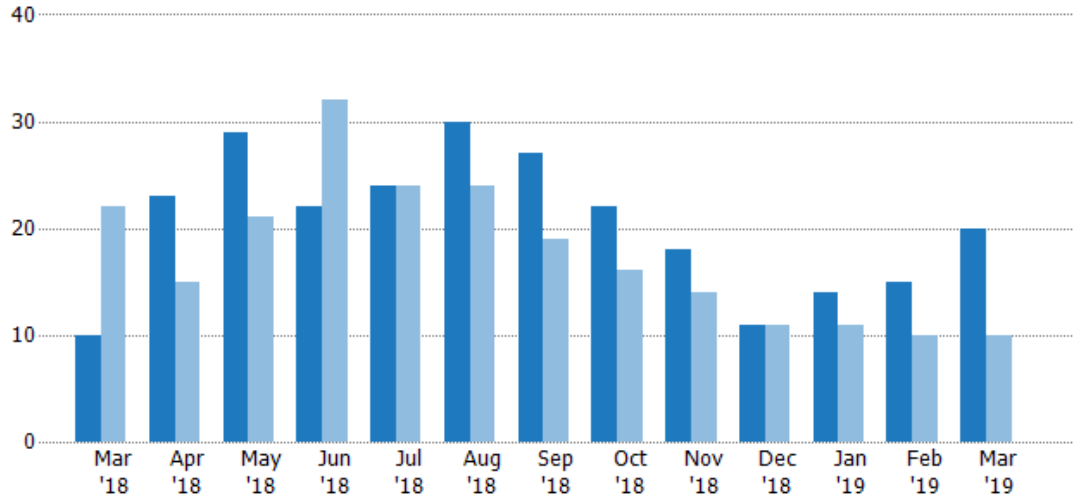
Pending Sales

The number of residential properties with accepted offers that were available at the end each month.

Filters Used

ZIP: Brattleboro, VT 05301, Brattleboro, VT 05302, Brattleboro, VT 05303, Brattleboro, VT 05304
 Property Type: Condo/Townhouse/Apt, Single Family Residence

Month/Year	Count	% Chg.
Mar '19	20	100%
Mar '18	10	-54.5%
Mar '17	22	4.5%



Current Year	10	23	29	22	24	30	27	22	18	11	14	15	20
Prior Year	22	15	21	32	24	24	19	16	14	11	11	10	10
Percent Change from Prior Year	-55%	53%	38%	-31%	0%	25%	42%	38%	29%	0%	27%	50%	100%

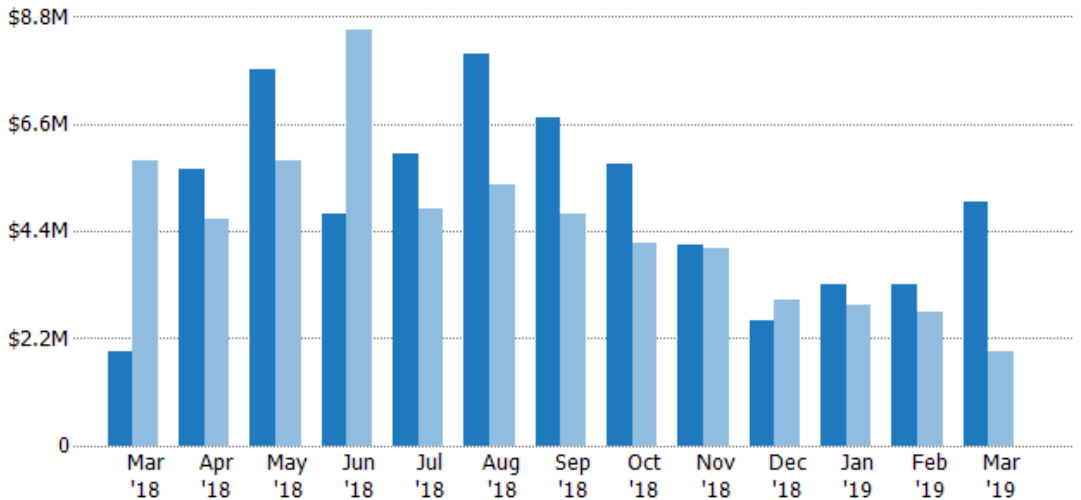
Pending Sales Volume

The sum of the sales price of residential properties with accepted offers that were available at the end of each month.

Filters Used

ZIP: Brattleboro, VT 05301, Brattleboro, VT 05302, Brattleboro, VT 05303, Brattleboro, VT 05304
 Property Type: Condo/Townhouse/Apt, Single Family Residence

Month/Year	Volume	% Chg.
Mar '19	\$4.99M	160.3%
Mar '18	\$1.92M	-67.2%
Mar '17	\$5.84M	-23.7%



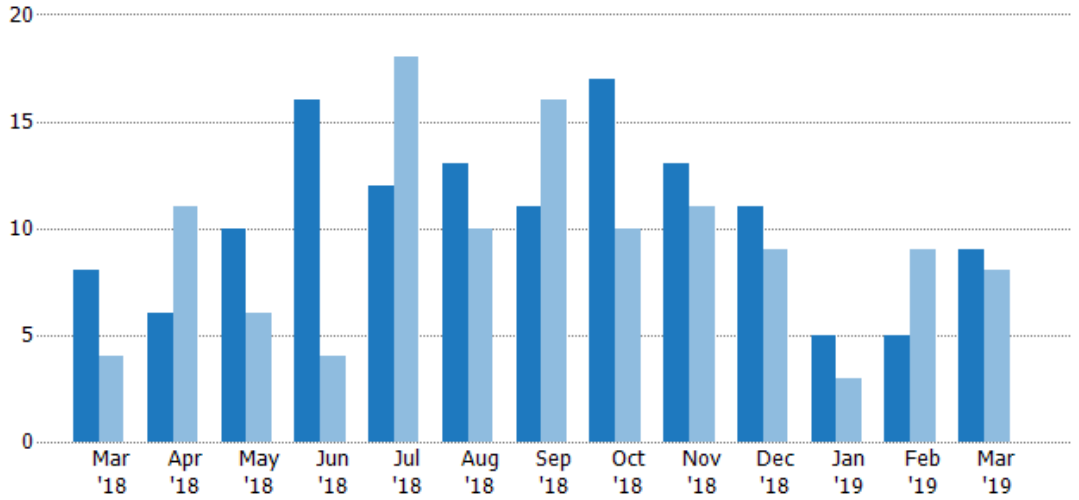
Current Year	\$1.92M	\$5.66M	\$7.74M	\$4.76M	\$5.98M	\$8.04M	\$6.75M	\$5.8M	\$4.13M	\$2.56M	\$3.31M	\$3.3M	\$4.99M
Prior Year	\$5.84M	\$4.65M	\$5.86M	\$8.52M	\$4.88M	\$5.37M	\$4.74M	\$4.14M	\$4.04M	\$2.98M	\$2.89M	\$2.74M	\$1.92M
Percent Change from Prior Year	-67%	22%	32%	-44%	23%	50%	42%	40%	2%	-14%	15%	20%	160%

Closed Sales

The total number of residential properties sold each month.

Filters Used

ZIP: Brattleboro, VT 05301, Brattleboro, VT 05302, Brattleboro, VT 05303, Brattleboro, VT 05304
 Property Type: Condo/Townhouse/Apt, Single Family Residence



Month/Year	Count	% Chg.
Mar '19	9	12.5%
Mar '18	8	100%
Mar '17	4	150%

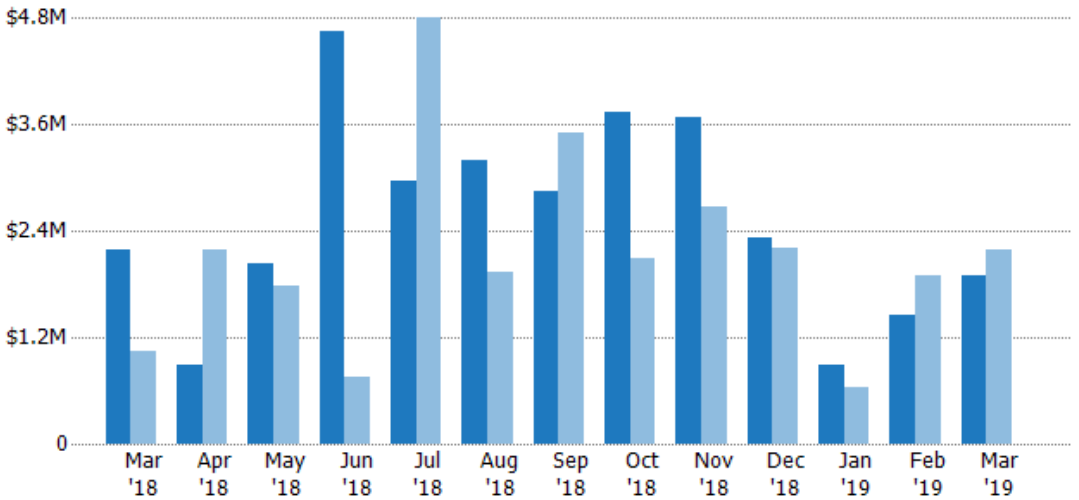
Current Year	8	6	10	16	12	13	11	17	13	11	5	5	9
Prior Year	4	11	6	4	18	10	16	10	11	9	3	9	8
Percent Change from Prior Year	100%	-45%	67%	300%	-33%	30%	-31%	70%	18%	22%	67%	-44%	13%

Closed Sales Volume

The sum of the sales price of residential properties sold each month.

Filters Used

ZIP: Brattleboro, VT 05301, Brattleboro, VT 05302, Brattleboro, VT 05303, Brattleboro, VT 05304
 Property Type: Condo/Townhouse/Apt, Single Family Residence



Month/Year	Volume	% Chg.
Mar '19	\$1.9M	-13.3%
Mar '18	\$2.19M	110.2%
Mar '17	\$1.04M	19.1%

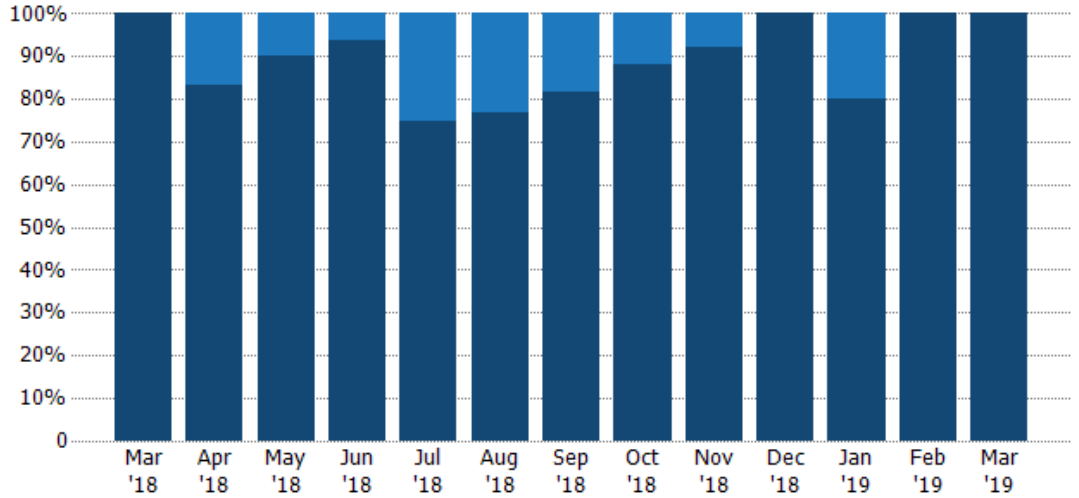
Current Year	\$2.19M	\$898K	\$2.03M	\$4.65M	\$2.97M	\$3.2M	\$2.85M	\$3.73M	\$3.68M	\$2.32M	\$882K	\$1.46M	\$1.9M
Prior Year	\$1.04M	\$2.18M	\$1.77M	\$756K	\$4.81M	\$1.93M	\$3.51M	\$2.09M	\$2.67M	\$2.2M	\$641K	\$1.89M	\$2.19M
Percent Change from Prior Year	110%	-59%	14%	515%	-38%	65%	-19%	79%	38%	6%	38%	-23%	-13%

Closed Sales by Property Type

The percentage of residential properties sold each month by property type.

Filters Used

ZIP: Brattleboro, VT 05301,
Brattleboro, VT 05302, Brattleboro,
VT 05303, Brattleboro, VT 05304
Property Type:
Condo/Townhouse/Apt, Single
Family Residence



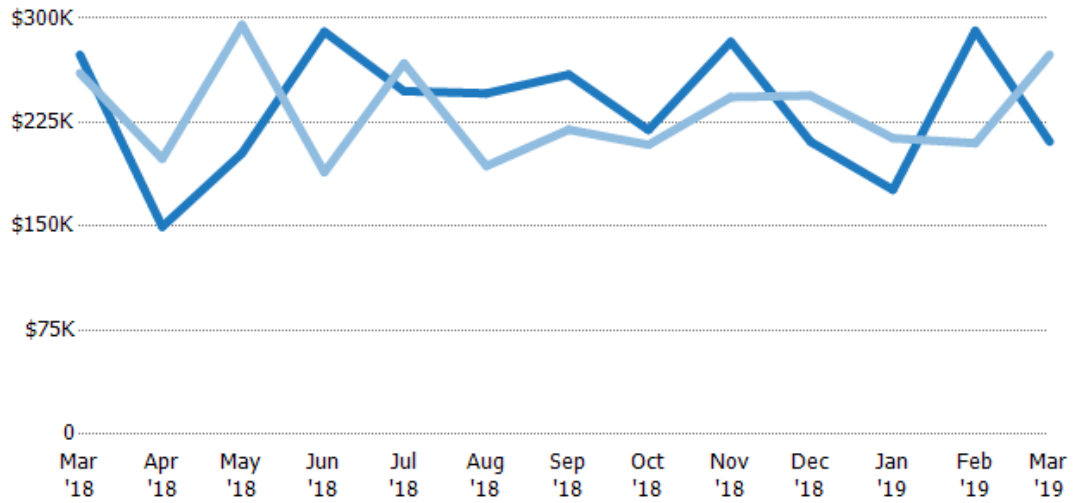
Condo/Townhouse	-	17%	10%	6%	25%	23%	18%	12%	8%	-	20%	-	-
Single Family Residence	100%	83%	90%	94%	75%	77%	82%	88%	92%	100%	80%	100%	100%

Average Sales Price

The average sales price of the residential properties sold each month.

Filters Used

ZIP: Brattleboro, VT 05301,
Brattleboro, VT 05302, Brattleboro,
VT 05303, Brattleboro, VT 05304
Property Type:
Condo/Townhouse/Apt, Single
Family Residence



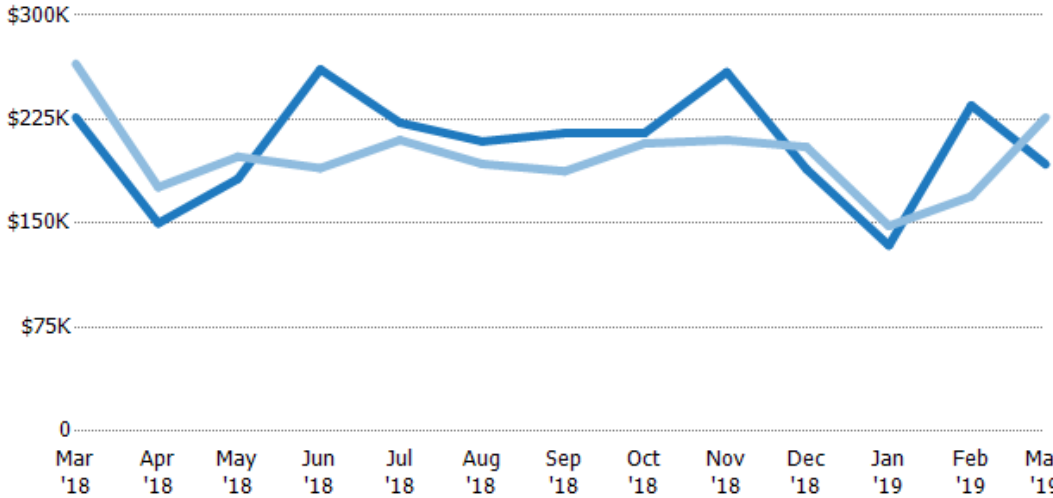
Current Year	\$274K	\$150K	\$203K	\$290K	\$247K	\$246K	\$259K	\$219K	\$283K	\$211K	\$176K	\$291K	\$211K
Prior Year	\$260K	\$199K	\$295K	\$189K	\$267K	\$193K	\$220K	\$209K	\$243K	\$244K	\$214K	\$210K	\$274K
Percent Change from Prior Year	5%	-25%	-31%	54%	-7%	27%	18%	5%	16%	-14%	-17%	39%	-23%

Median Sales Price

The median sales price of the residential properties sold each month.

Filters Used

ZIP: Brattleboro, VT 05301, Brattleboro, VT 05302, Brattleboro, VT 05303, Brattleboro, VT 05304
 Property Type: Condo/Townhouse/Apt, Single Family Residence



Month/Year	Price	% Chg.
Mar '19	\$193K	-15%
Mar '18	\$226K	-14.6%
Mar '17	\$265K	-45.7%

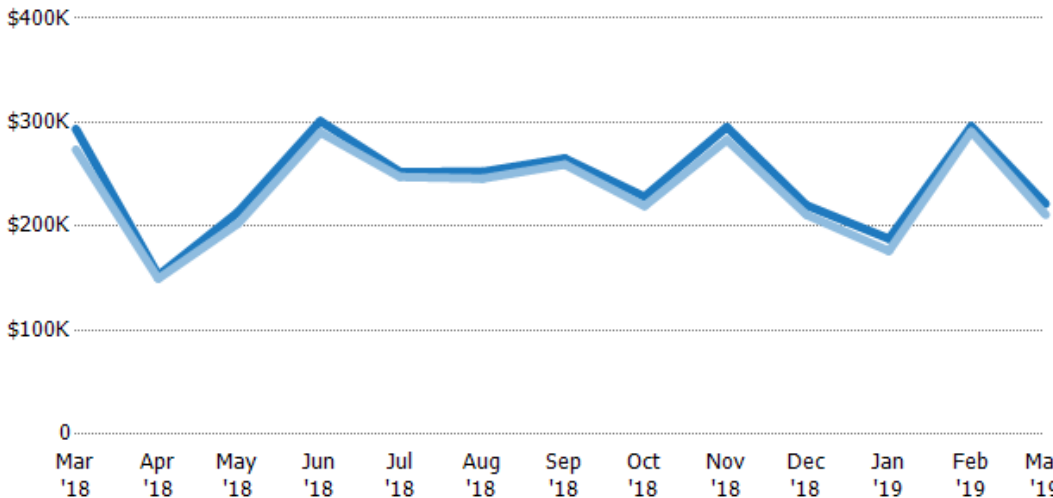
	Mar '18	Apr '18	May '18	Jun '18	Jul '18	Aug '18	Sep '18	Oct '18	Nov '18	Dec '18	Jan '19	Feb '19	Mar '19
Current Year	\$226K	\$150K	\$182K	\$261K	\$223K	\$209K	\$215K	\$215K	\$259K	\$189K	\$134K	\$235K	\$193K
Prior Year	\$265K	\$176K	\$198K	\$190K	\$210K	\$193K	\$188K	\$208K	\$210K	\$205K	\$148K	\$169K	\$226K
Percent Change from Prior Year	-15%	-15%	-8%	38%	6%	8%	15%	4%	23%	-8%	-9%	39%	-15%

Average Sales Price vs Average Listing Price

The average sales price as a percentage of the average listing price for properties sold each month.

Filters Used

ZIP: Brattleboro, VT 05301, Brattleboro, VT 05302, Brattleboro, VT 05303, Brattleboro, VT 05304
 Property Type: Condo/Townhouse/Apt, Single Family Residence



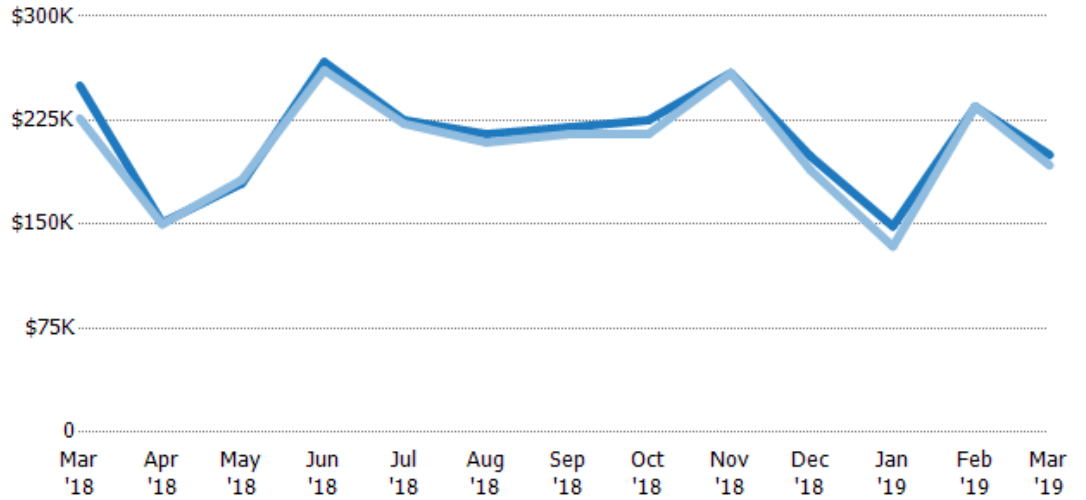
	Mar '18	Apr '18	May '18	Jun '18	Jul '18	Aug '18	Sep '18	Oct '18	Nov '18	Dec '18	Jan '19	Feb '19	Mar '19
Avg List Price	\$293K	\$153K	\$214K	\$301K	\$252K	\$252K	\$265K	\$228K	\$295K	\$220K	\$188K	\$296K	\$222K
Avg Sales Price	\$274K	\$150K	\$203K	\$290K	\$247K	\$246K	\$259K	\$219K	\$283K	\$211K	\$176K	\$291K	\$211K
Avg Sales Price as a % of Avg List Price	93%	98%	95%	96%	98%	97%	98%	96%	96%	96%	94%	98%	95%

Median Sales Price vs Median Listing Price

The median sales price as a percentage of the median listing price for properties sold each month.

Filters Used

ZIP: Brattleboro, VT 05301,
Brattleboro, VT 05302, Brattleboro,
VT 05303, Brattleboro, VT 05304
Property Type:
Condo/Townhouse/Apt, Single
Family Residence



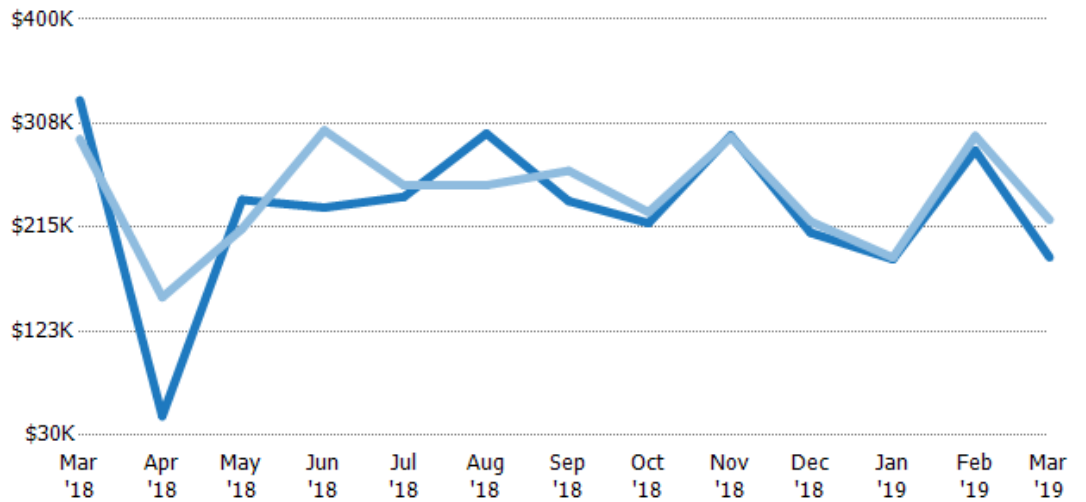
	Mar '18	Apr '18	May '18	Jun '18	Jul '18	Aug '18	Sep '18	Oct '18	Nov '18	Dec '18	Jan '19	Feb '19	Mar '19
Median List Price	\$250K	\$151K	\$180K	\$267K	\$225K	\$215K	\$220K	\$225K	\$259K	\$199K	\$149K	\$235K	\$200K
Median Sales Price	\$226K	\$150K	\$182K	\$261K	\$223K	\$209K	\$215K	\$215K	\$259K	\$189K	\$134K	\$235K	\$193K
Med Sales Price as a % of Med List Price	91%	99%	101%	98%	99%	97%	98%	96%	100%	95%	90%	100%	96%

Average Sales Price vs Average Est Value

The average sales price as a percentage of the average AVM or RVM® valuation estimate for properties sold each month.

Filters Used

ZIP: Brattleboro, VT 05301,
Brattleboro, VT 05302, Brattleboro,
VT 05303, Brattleboro, VT 05304
Property Type:
Condo/Townhouse/Apt, Single
Family Residence



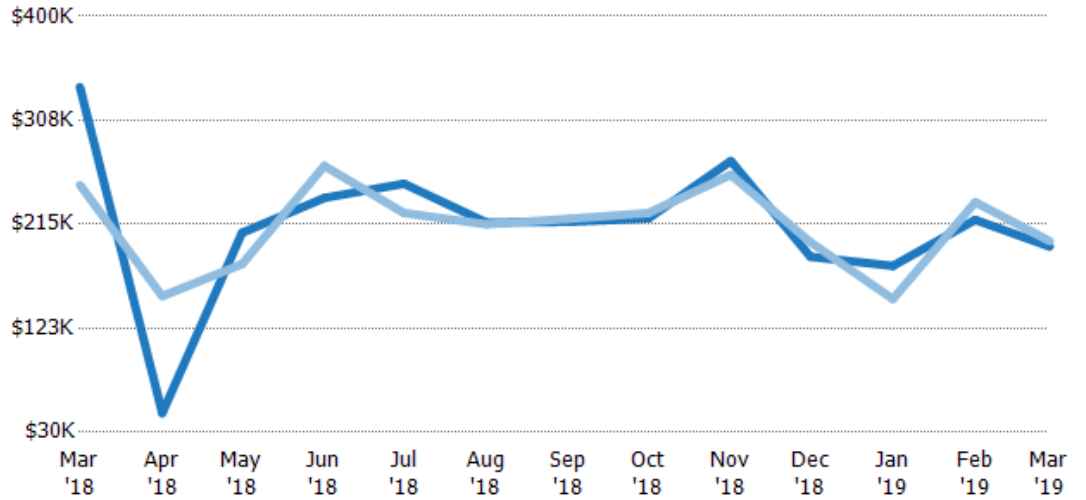
	Mar '18	Apr '18	May '18	Jun '18	Jul '18	Aug '18	Sep '18	Oct '18	Nov '18	Dec '18	Jan '19	Feb '19	Mar '19
Avg Est Value	\$328K	\$47K	\$239K	\$232K	\$242K	\$298K	\$238K	\$219K	\$297K	\$210K	\$186K	\$283K	\$188K
Avg Sales Price	\$293K	\$153K	\$214K	\$301K	\$252K	\$252K	\$265K	\$228K	\$295K	\$220K	\$188K	\$296K	\$222K
Avg Sales Price as a % of Avg Est Value	89%	325%	89%	130%	104%	85%	111%	104%	100%	105%	101%	105%	118%

Median Sales Price vs Median Est Value

The median sales price as a percent of the median AVM or RVM® valuation estimate for properties sold each month.

Filters Used

ZIP: Brattleboro, VT 05301,
Brattleboro, VT 05302, Brattleboro,
VT 05303, Brattleboro, VT 05304
Property Type:
Condo/Townhouse/Apt, Single
Family Residence



	Mar '18	Apr '18	May '18	Jun '18	Jul '18	Aug '18	Sep '18	Oct '18	Nov '18	Dec '18	Jan '19	Feb '19	Mar '19
Median Est Value	\$337K	\$47K	\$207K	\$238K	\$251K	\$217K	\$217K	\$220K	\$271K	\$186K	\$178K	\$219K	\$195K
Median Sales Price	\$250K	\$151K	\$180K	\$267K	\$225K	\$215K	\$220K	\$225K	\$259K	\$199K	\$149K	\$235K	\$200K
Med Sales Price as a % of Med Est Value	74%	321%	87%	112%	90%	99%	101%	102%	95%	107%	83%	107%	102%