

Summary of Key Listing and Sales Metrics

A summary of the key metrics selected to be included in the report. MLS sources where licensed.

Key Metrics	Feb 2019	Feb 2018	+ / -	YTD 2019	YTD 2018	+ / -
Listing Activity Charts Metrics						
New Listing Count	42	36	+16.7%	85	75	+13.3%
New Listing Volume	\$15,512,900	\$11,873,999	+30.6%	\$30,447,500	\$26,190,387	+16.3%
Active Listing Count	375	403	-6.9%	N/A	N/A	
Active Listing Volume	\$163,002,197	\$167,197,587	-2.5%	N/A	N/A	
Average Listing Price	\$434,673	\$414,882	+4.8%	\$431,901	\$412,020	+4.8%
Median Listing Price	\$299,999	\$295,000	+1.7%	\$302,516	\$292,240	+3.5%
Median Days in RPR	209	204	+2.5%	200.47	197.09	+1.7%
Months of Inventory	20.8	15.5	+34.4%	16.2	16.9	-3.7%
Absorption Rate	4.8%	6.45%	-1.7%	6.16%	5.93%	+0.2%
Sales Activity Charts Metrics						
New Pending Sales Count	39	26	+50%	69	54	+27.8%
New Pending Sales Volume	\$10,642,300	\$7,031,600	+51.3%	\$17,976,900	\$13,465,100	+33.5%
Pending Sales Count	75	45	+66.7%	N/A	N/A	
Pending Sales Volume	\$19,913,500	\$11,764,000	+69.3%	N/A	N/A	
Closed Sales Count	20	21	-4.8%	38	47	-19.1%
Closed Sales Volume	\$5,367,675	\$5,312,400	+1%	\$8,894,675	\$12,250,600	-27.4%
Average Sales Price	\$268,384	\$252,971	+6.1%	\$234,070	\$260,651	-10.2%
Median Sales Price	\$207,000	\$196,000	+5.6%	\$185,803	\$199,596	-6.9%

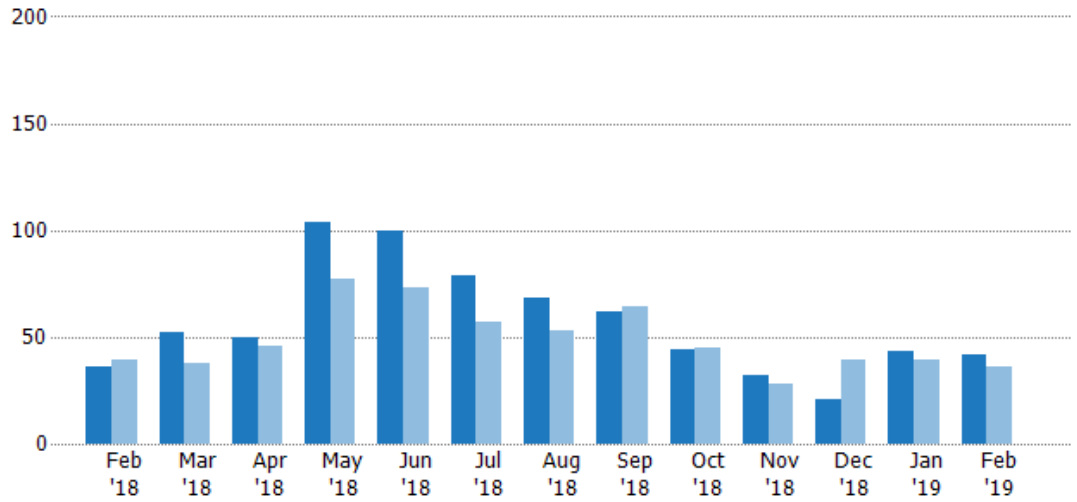
New Listings

The number of new residential listings that were added each month.

Filters Used

State: VT
County: Bennington County, Vermont
Property Type: Condo/Townhouse/Apt, Single Family Residence

Month/Year	Count	% Chg.
Feb '19	42	16.7%
Feb '18	36	-7.7%
Feb '17	39	17.9%



Current Year	36	52	50	104	100	79	68	62	44	32	21	43	42
Prior Year	39	38	46	77	73	57	53	64	45	28	39	39	36
Percent Change from Prior Year	-8%	37%	9%	35%	37%	39%	28%	-3%	-2%	14%	-46%	10%	17%

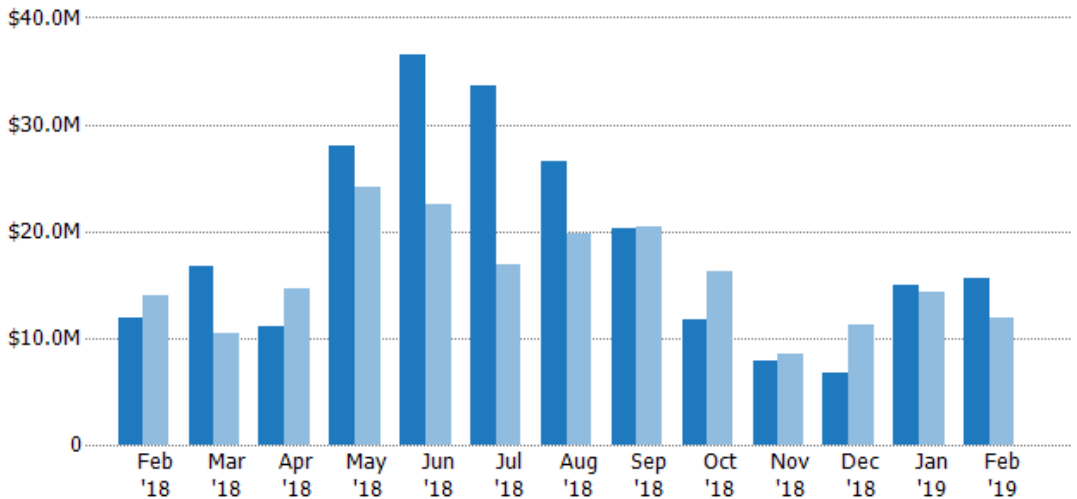
New Listing Volume

The sum of the listing price of residential listings that were added each month.

Filters Used

State: VT
County: Bennington County, Vermont
Property Type: Condo/Townhouse/Apt, Single Family Residence

Month/Year	Volume	% Chg.
Feb '19	\$15.5M	30.6%
Feb '18	\$11.9M	-14.6%
Feb '17	\$13.9M	5.1%



Current Year	\$11.9M	\$16.8M	\$11.1M	\$28M	\$36.5M	\$33.7M	\$26.6M	\$20.3M	\$11.7M	\$7.89M	\$6.68M	\$14.9M	\$15.5M
Prior Year	\$13.9M	\$10.4M	\$14.6M	\$24.1M	\$22.6M	\$16.9M	\$19.8M	\$20.4M	\$16.3M	\$8.48M	\$11.3M	\$14.3M	\$11.9M
Percent Change from Prior Year	-15%	61%	-24%	16%	62%	99%	34%	0%	-28%	-7%	-41%	4%	31%

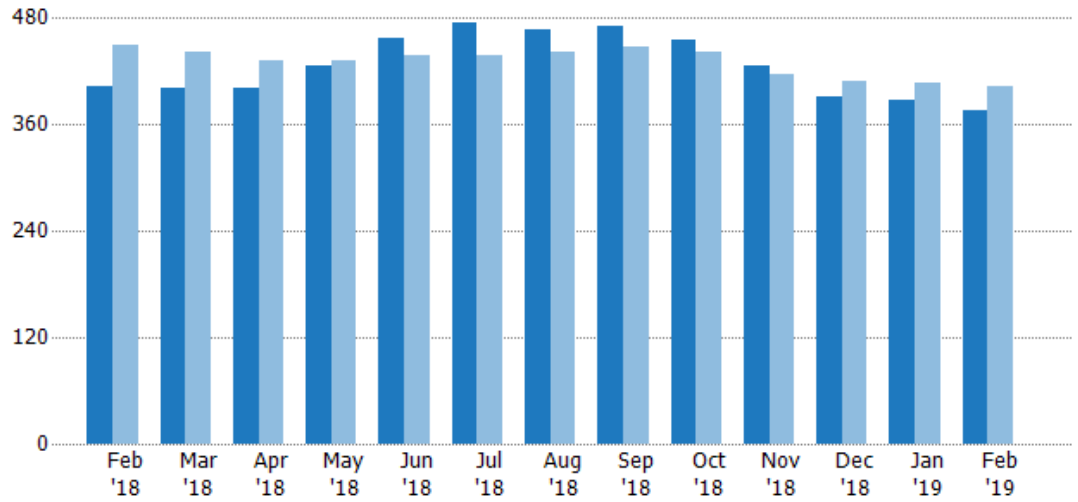
Active Listings

The number of active residential listings at the end of each month.

Filters Used

State: VT
County: Bennington County, Vermont
Property Type: Condo/Townhouse/Apt, Single Family Residence

Month/Year	Count	% Chg.
Feb '19	375	-6.9%
Feb '18	403	-10.2%
Feb '17	449	8.7%



Current Year	403	401	401	426	457	474	468	470	456	427	391	388	375
Prior Year	449	441	433	432	437	438	441	447	442	417	408	406	403
Percent Change from Prior Year	-10%	-9%	-7%	-1%	5%	8%	6%	5%	3%	2%	-4%	-4%	-7%

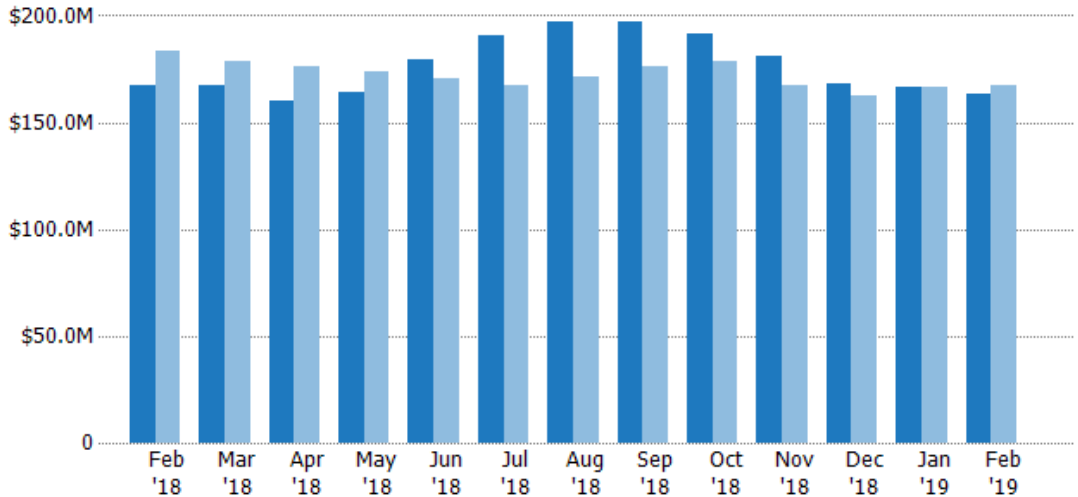
Active Listing Volume

The sum of the listing price of active residential listings at the end of each month.

Filters Used

State: VT
County: Bennington County, Vermont
Property Type: Condo/Townhouse/Apt, Single Family Residence

Month/Year	Volume	% Chg.
Feb '19	\$163M	-2.5%
Feb '18	\$167M	-9%
Feb '17	\$184M	2.9%



Current Year	\$167M	\$167M	\$160M	\$164M	\$180M	\$191M	\$197M	\$197M	\$191M	\$181M	\$168M	\$167M	\$163M
Prior Year	\$184M	\$179M	\$176M	\$174M	\$171M	\$168M	\$171M	\$176M	\$179M	\$167M	\$163M	\$166M	\$167M
Percent Change from Prior Year	-9%	-6%	-9%	-6%	5%	14%	15%	12%	7%	8%	4%	0%	-3%

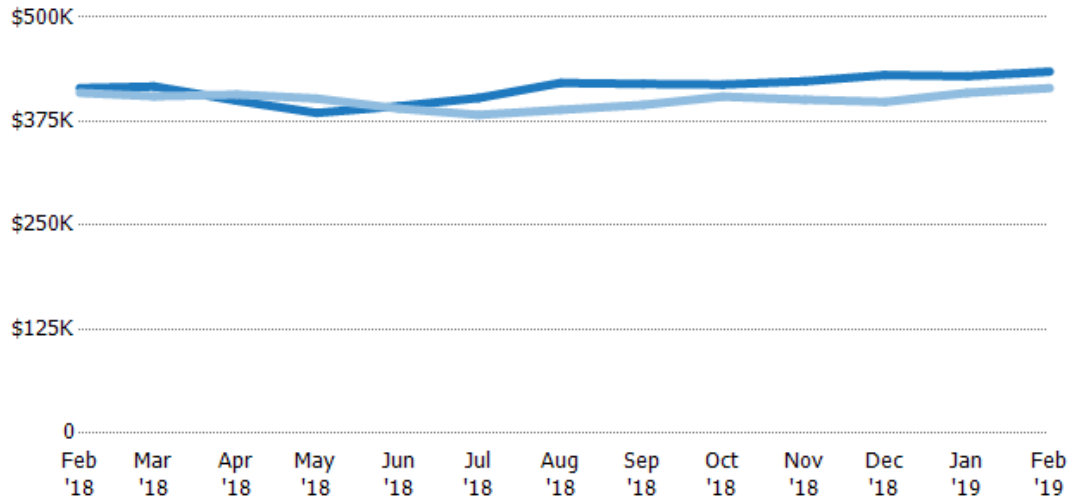
Average Listing Price

The average listing price of active residential listings at the end of each month.

Filters Used

State: VT
County: Bennington County, Vermont
Property Type: Condo/Townhouse/Apt, Single Family Residence

Month/Year	Price	% Chg.
Feb '19	\$435K	4.8%
Feb '18	\$415K	1.4%
Feb '17	\$409K	-5.3%



Current Year	\$415K	\$417K	\$400K	\$385K	\$393K	\$403K	\$421K	\$420K	\$419K	\$423K	\$430K	\$429K	\$435K
Prior Year	\$409K	\$405K	\$407K	\$402K	\$390K	\$383K	\$389K	\$395K	\$405K	\$401K	\$398K	\$409K	\$415K
Percent Change from Prior Year	1%	3%	-2%	-4%	1%	5%	8%	6%	4%	6%	8%	5%	5%

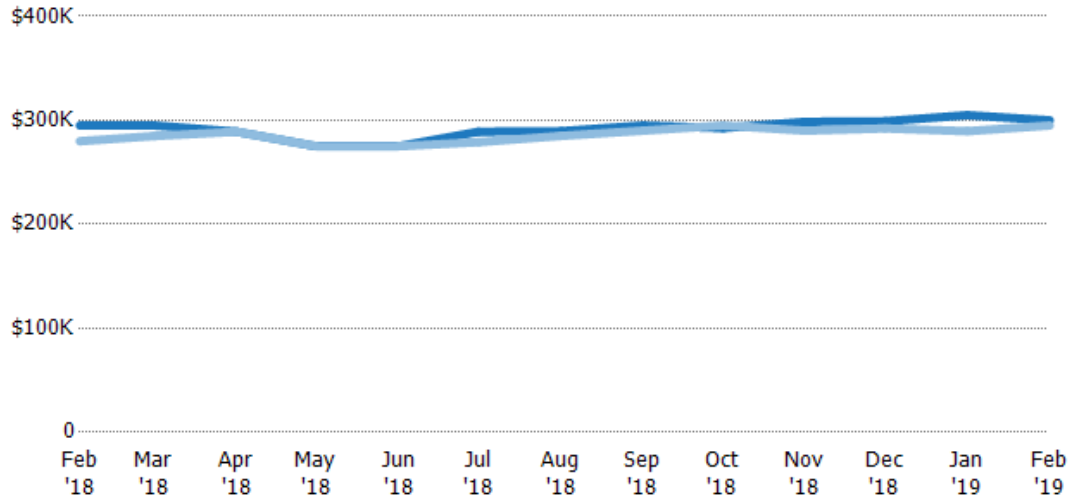
Median Listing Price

The median listing price of active residential listings at the end of each month.

Filters Used

State: VT
County: Bennington County, Vermont
Property Type: Condo/Townhouse/Apt, Single Family Residence

Month/Year	Price	% Chg.
Feb '19	\$300K	1.7%
Feb '18	\$295K	5.4%
Feb '17	\$280K	-3.7%



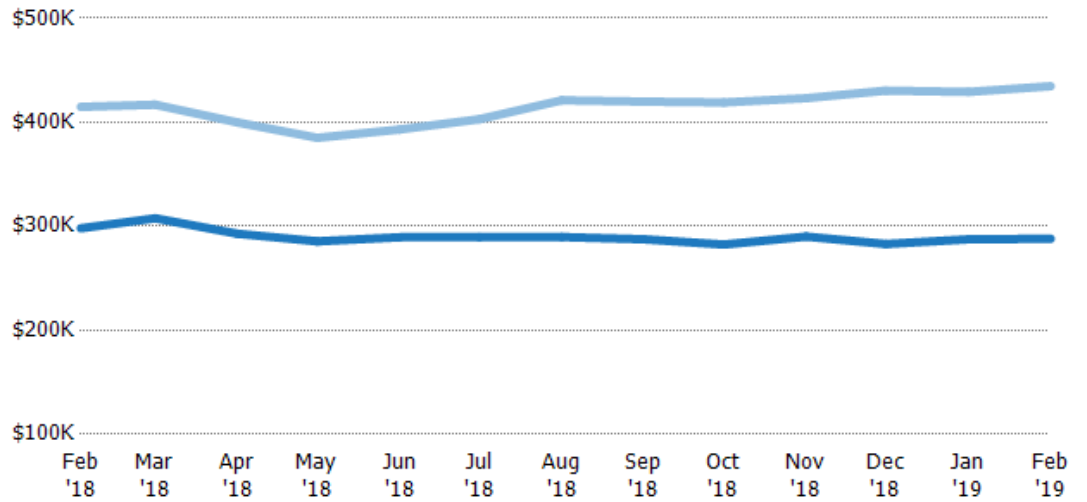
Current Year	\$295K	\$295K	\$289K	\$275K	\$275K	\$289K	\$290K	\$295K	\$293K	\$299K	\$299K	\$305K	\$300K
Prior Year	\$280K	\$285K	\$289K	\$275K	\$275K	\$279K	\$285K	\$290K	\$295K	\$290K	\$292K	\$290K	\$295K
Percent Change from Prior Year	5%	4%	0%	0%	0%	4%	2%	2%	-1%	3%	2%	5%	2%

Average Listing Price vs Average Est Value

The average listing price as a percentage of the average AVM or RVM® valuation estimate for active listings each month.

Filters Used

State: VT
County: Bennington County, Vermont
Property Type: Condo/Townhouse/Apt, Single Family Residence



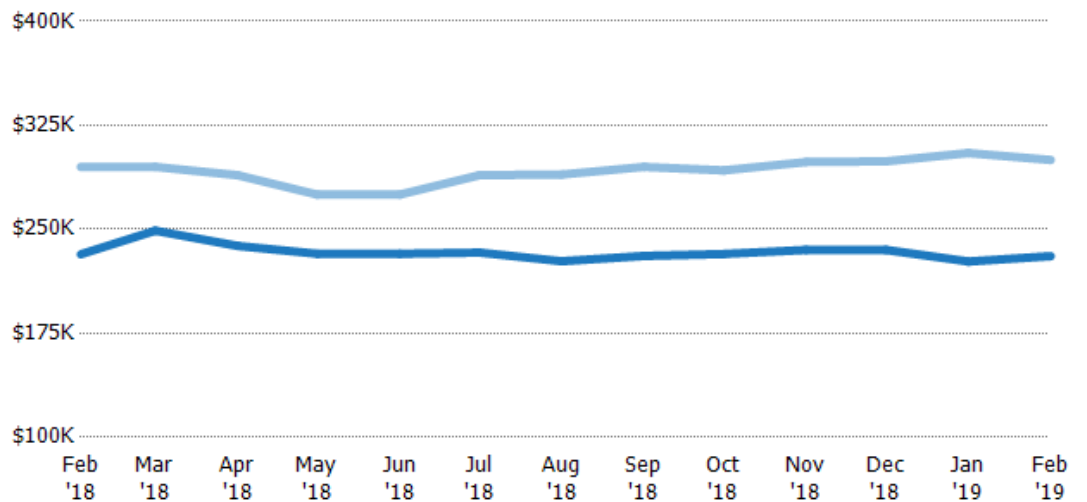
Avg Est Value	\$298K	\$308K	\$293K	\$286K	\$289K	\$290K	\$290K	\$287K	\$282K	\$290K	\$283K	\$287K	\$288K
Avg Listing Price	\$415K	\$417K	\$400K	\$385K	\$393K	\$403K	\$421K	\$420K	\$419K	\$423K	\$430K	\$429K	\$435K
Avg Listing Price as a % of Avg Est Value	139%	135%	137%	135%	136%	139%	145%	146%	148%	146%	152%	149%	151%

Median Listing Price vs Median Est Value

The median listing price as a percentage of the median AVM or RVM® valuation estimate for active listings each month.

Filters Used

State: VT
County: Bennington County, Vermont
Property Type: Condo/Townhouse/Apt, Single Family Residence



Median Est Value	\$232K	\$249K	\$238K	\$232K	\$232K	\$233K	\$227K	\$231K	\$232K	\$235K	\$235K	\$227K	\$231K
Median Listing Price	\$295K	\$295K	\$289K	\$275K	\$275K	\$289K	\$290K	\$295K	\$293K	\$299K	\$299K	\$305K	\$300K
Med Listing Price as a % of Med Est Value	127%	118%	121%	118%	118%	124%	128%	128%	126%	127%	127%	134%	130%

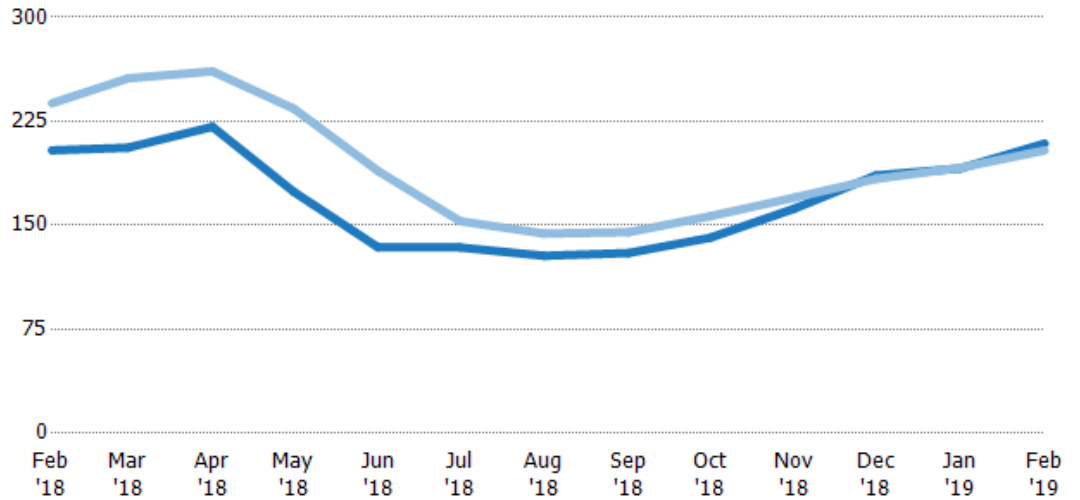
Median Days in RPR

The median number of days between when residential properties are first displayed as active listings in RPR and when accepted offers have been noted in RPR.

Filters Used

State: VT
County: Bennington County, Vermont
Property Type: Condo/Townhouse/Apt, Single Family Residence

Month/Year	Days	% Chg.
Feb '19	209	2.5%
Feb '18	204	-14.3%
Feb '17	238	-14.7%



Current Year	204	206	221	174	134	134	128	130	141	162	186	191	209
Prior Year	238	256	261	234	189	153	144	145	157	170	184	192	204
Percent Change from Prior Year	-14%	-20%	-15%	-26%	-29%	-12%	-11%	-10%	-10%	-5%	1%	0%	2%

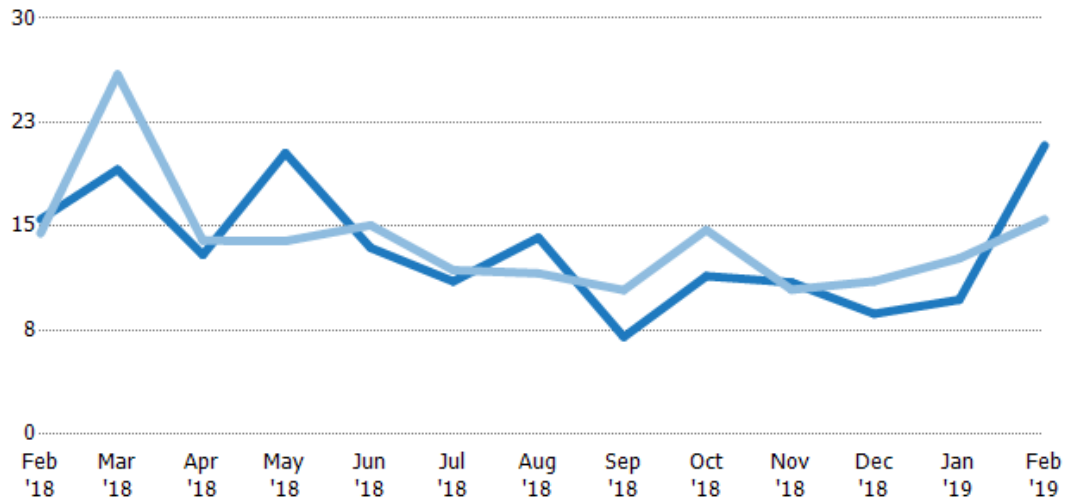
Months of Inventory

The number of months it would take to exhaust active listings at the current sales rate.

Filters Used

State: VT
County: Bennington County, Vermont
Property Type: Condo/Townhouse/Apt, Single Family Residence

Month/Year	Months	% Chg.
Feb '19	20.8	34.4%
Feb '18	15.5	7%
Feb '17	14.5	29.6%



Current Year	15.5	19.1	12.9	20.3	13.4	11	14.2	7.01	11.4	10.9	8.69	9.7	20.8
Prior Year	14.5	25.9	14	13.9	15.1	11.8	11.6	10.4	14.7	10.4	11	12.7	15.5
Percent Change from Prior Year	7%	-26%	-7%	46%	-11%	-7%	22%	-33%	-23%	5%	-21%	-24%	34%

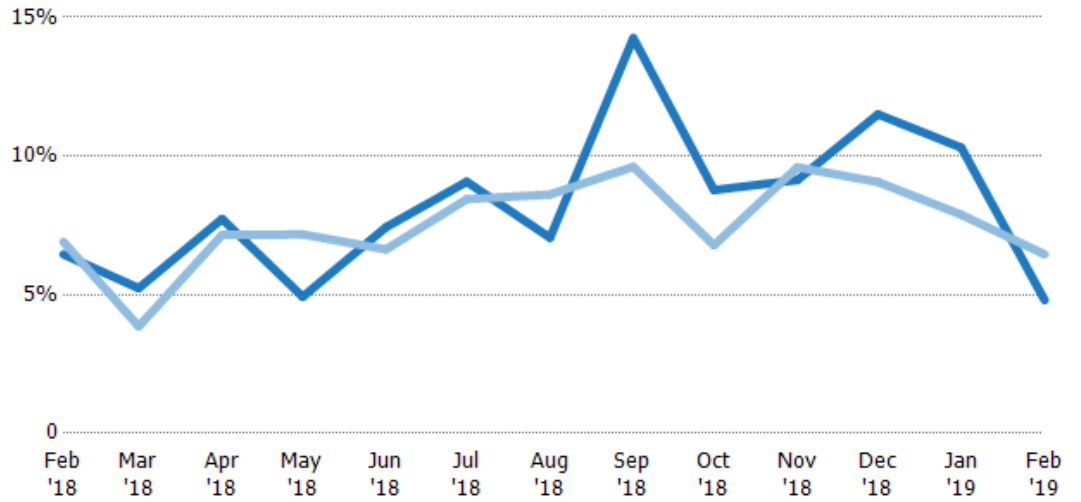
Absorption Rate

The percentage of inventory sold per month.

Filters Used

State: VT
County: Bennington County,
Vermont
Property Type:
Condo/Townhouse/Apt, Single
Family Residence

Month/ Year	Rate	Chg.
Feb '19	5%	1.7%
Feb '18	6%	0.5%
Feb '17	7%	-22.9%



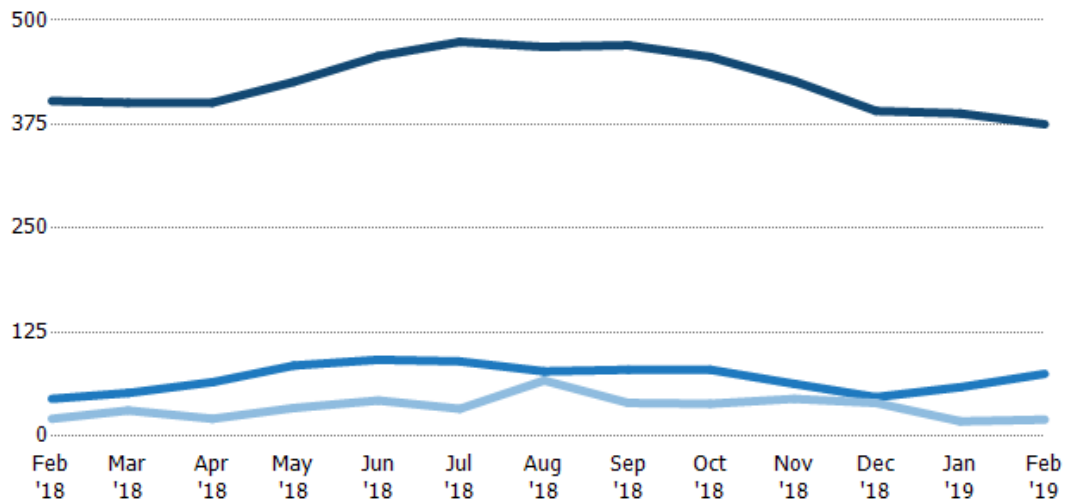
Current Year	6%	5%	8%	5%	7%	9%	7%	14%	9%	9%	12%	10%	5%
Prior Year	7%	4%	7%	7%	7%	8%	9%	10%	7%	10%	9%	8%	6%
Change from Prior Year	0%	-1%	-1%	2%	-1%	-1%	2%	-5%	-2%	0%	-2%	-2%	2%

Active/Pending/Sold Units

The number of residential properties that were Active, Pending and Sold each month.

Filters Used

State: VT
County: Bennington County,
Vermont
Property Type:
Condo/Townhouse/Apt, Single
Family Residence



Active	403	401	401	426	457	474	468	470	456	427	391	388	375
Pending	45	52	65	85	92	90	78	80	80	63	47	59	75
Sold	21	31	21	34	43	33	67	40	39	45	40	18	20

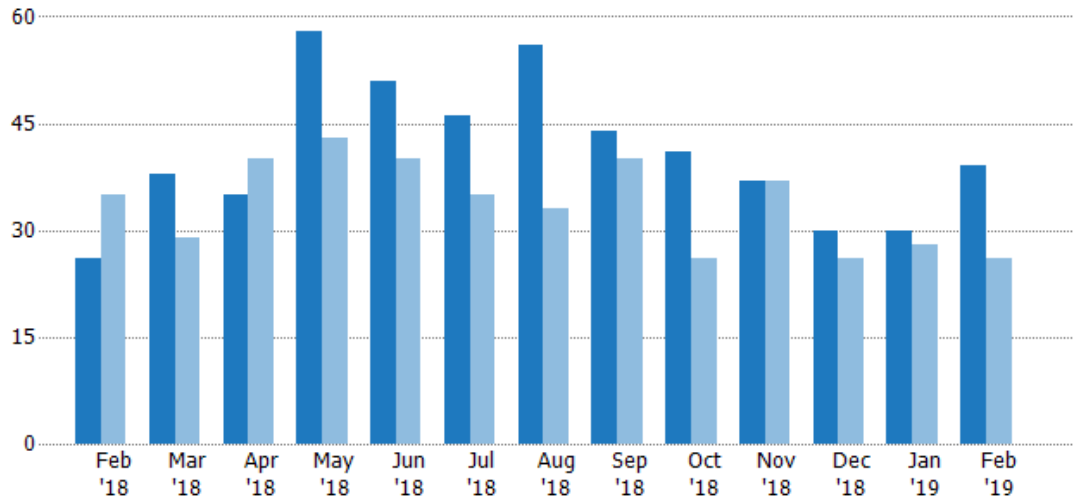
New Pending Sales

The number of residential properties with accepted offers that were added each month.

Filters Used

State: VT
County: Bennington County, Vermont
Property Type: Condo/Townhouse/Apt, Single Family Residence

Month/Year	Count	% Chg.
Feb '19	39	50%
Feb '18	26	-25.7%
Feb '17	35	-14.3%



Current Year	26	38	35	58	51	46	56	44	41	37	30	30	39
Prior Year	35	29	40	43	40	35	33	40	26	37	26	28	26
Percent Change from Prior Year	-26%	31%	-13%	35%	28%	31%	70%	10%	58%	0%	15%	7%	50%

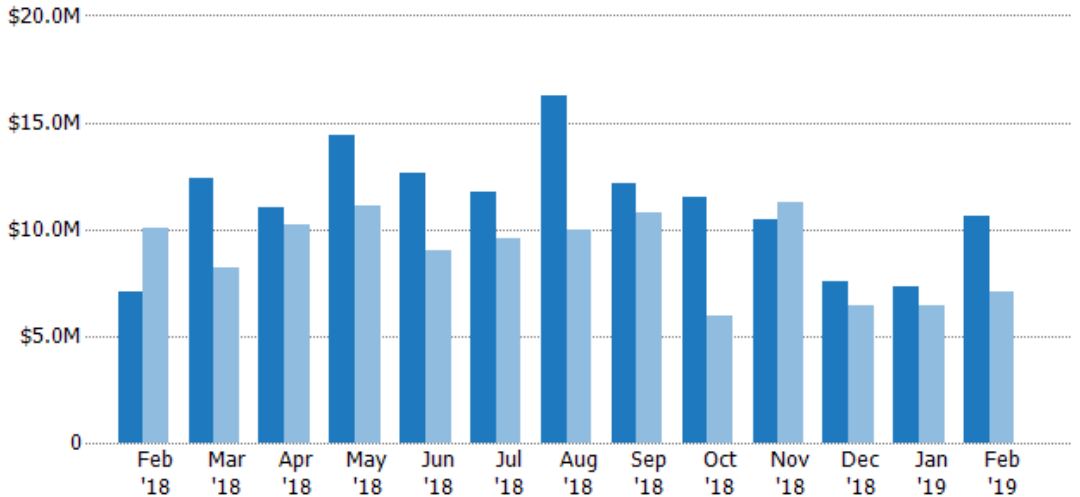
New Pending Sales Volume

The sum of the sales price of residential properties with accepted offers that were added each month.

Filters Used

State: VT
County: Bennington County, Vermont
Property Type: Condo/Townhouse/Apt, Single Family Residence

Month/Year	Volume	% Chg.
Feb '19	\$10.6M	51.3%
Feb '18	\$7.03M	-29.8%
Feb '17	\$10M	-20.5%



Current Year	\$7.03M	\$12.4M	\$11M	\$14.4M	\$12.6M	\$11.7M	\$16.2M	\$12.2M	\$11.5M	\$10.5M	\$7.55M	\$7.33M	\$10.6M
Prior Year	\$10M	\$8.2M	\$10.2M	\$11.1M	\$9M	\$9.57M	\$9.97M	\$10.8M	\$5.93M	\$11.2M	\$6.39M	\$6.43M	\$7.03M
Percent Change from Prior Year	-30%	51%	8%	30%	40%	22%	63%	13%	94%	-7%	18%	14%	51%

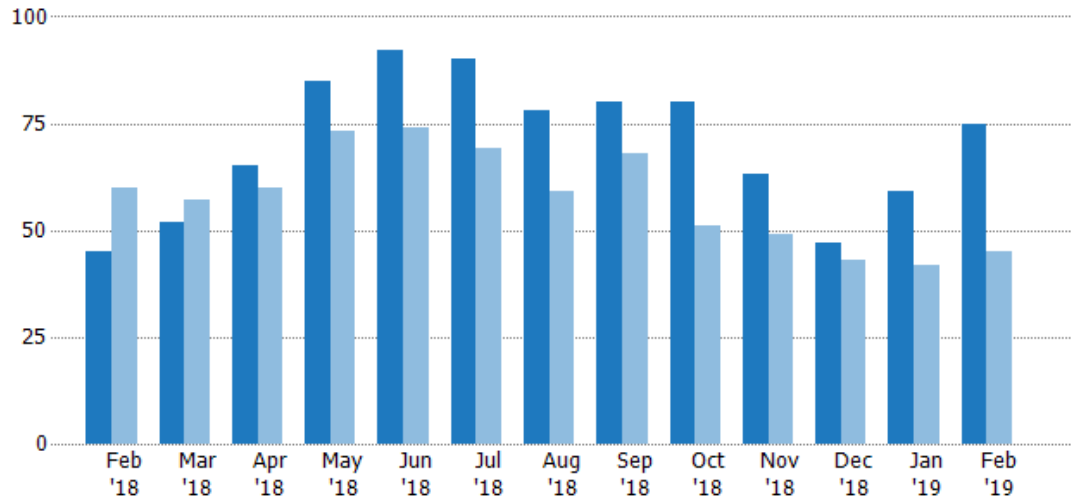
Pending Sales

The number of residential properties with accepted offers that were available at the end each month.

Filters Used

State: VT
County: Bennington County, Vermont
Property Type: Condo/Townhouse/Apt, Single Family Residence

Month/Year	Count	% Chg.
Feb '19	75	66.7%
Feb '18	45	-25%
Feb '17	60	-5%



Current Year	45	52	65	85	92	90	78	80	80	63	47	59	75
Prior Year	60	57	60	73	74	69	59	68	51	49	43	42	45
Percent Change from Prior Year	-25%	-9%	8%	16%	24%	30%	32%	18%	57%	29%	9%	40%	67%

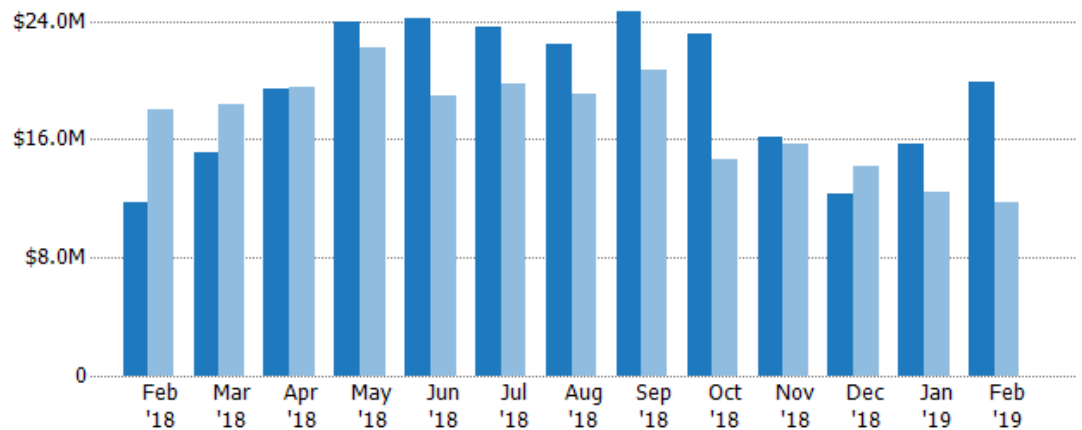
Pending Sales Volume

The sum of the sales price of residential properties with accepted offers that were available at the end of each month.

Filters Used

State: VT
County: Bennington County, Vermont
Property Type: Condo/Townhouse/Apt, Single Family Residence

Month/Year	Volume	% Chg.
Feb '19	\$19.9M	69.3%
Feb '18	\$11.8M	-34.8%
Feb '17	\$18M	-13.5%



Current Year	\$11.8M	\$15.1M	\$19.4M	\$24M	\$24.2M	\$23.6M	\$22.5M	\$24.6M	\$23.1M	\$16.2M	\$12.4M	\$15.7M	\$19.9M
Prior Year	\$18M	\$18.4M	\$19.6M	\$22.2M	\$19M	\$19.8M	\$19.1M	\$20.7M	\$14.7M	\$15.7M	\$14.1M	\$12.4M	\$11.8M
Percent Change from Prior Year	-35%	-18%	-1%	8%	28%	19%	18%	19%	58%	3%	-13%	26%	69%

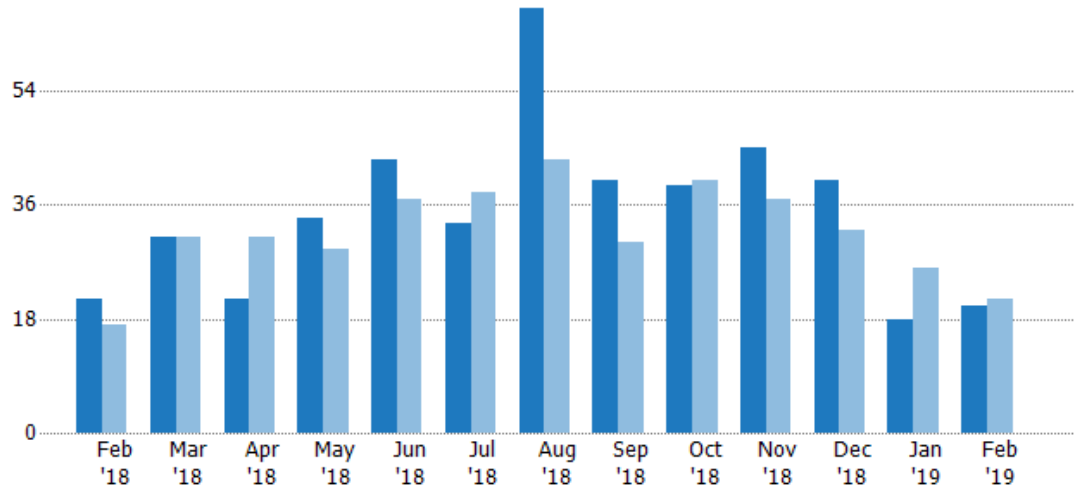
Closed Sales

The total number of residential properties sold each month.

Filters Used

State: VT
County: Bennington County, Vermont
Property Type: Condo/Townhouse/Apt, Single Family Residence

Month/Year	Count	% Chg.
Feb '19	20	-4.8%
Feb '18	21	23.5%
Feb '17	17	5.9%



Current Year	21	31	21	34	43	33	67	40	39	45	40	18	20
Prior Year	17	31	31	29	37	38	43	30	40	37	32	26	21
Percent Change from Prior Year	24%	0%	-32%	17%	16%	-13%	56%	33%	-3%	22%	25%	-31%	-5%

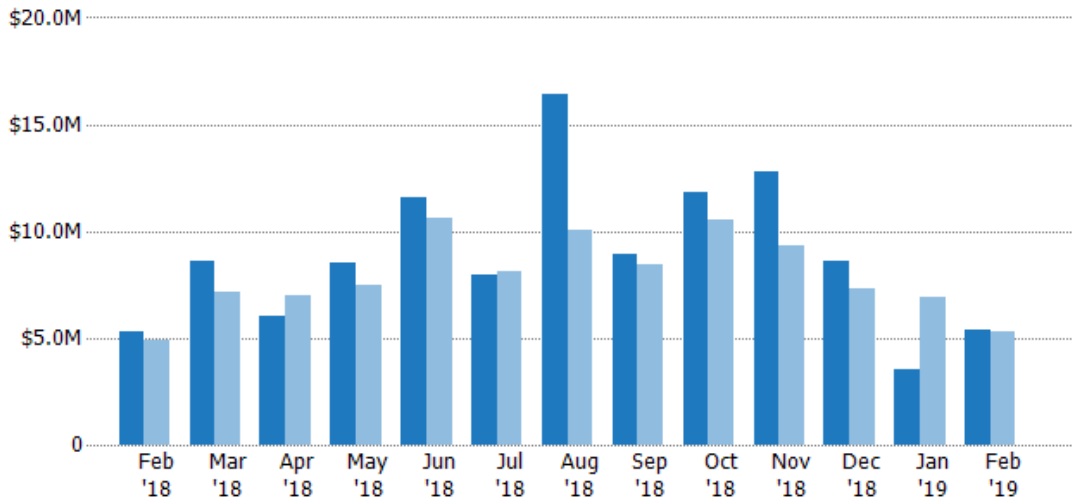
Closed Sales Volume

The sum of the sales price of residential properties sold each month.

Filters Used

State: VT
County: Bennington County, Vermont
Property Type: Condo/Townhouse/Apt, Single Family Residence

Month/Year	Volume	% Chg.
Feb '19	\$5.37M	1%
Feb '18	\$5.31M	7.9%
Feb '17	\$4.92M	-24.6%



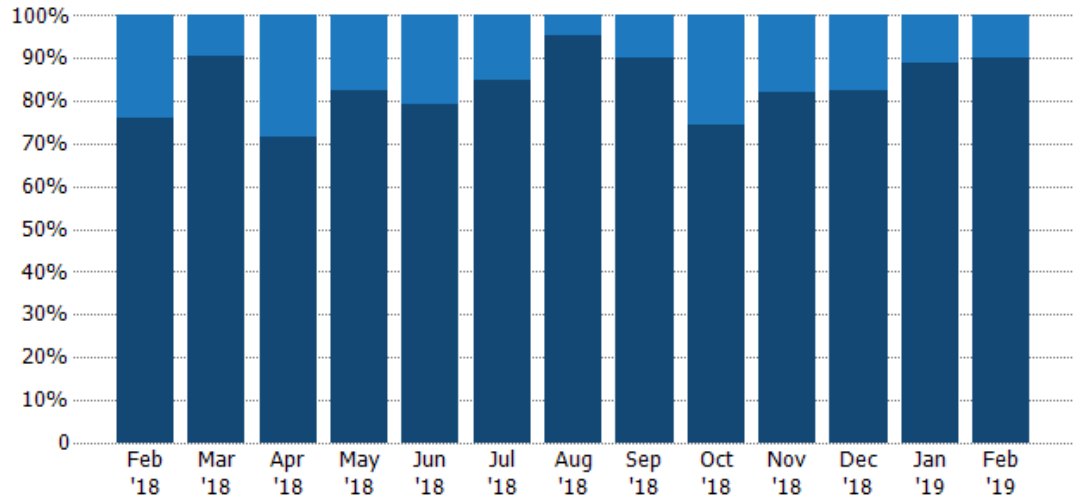
Current Year	\$5.31M	\$8.64M	\$6.05M	\$8.5M	\$11.6M	\$7.94M	\$16.4M	\$8.9M	\$11.8M	\$12.8M	\$8.6M	\$3.53M	\$5.37M
Prior Year	\$4.92M	\$7.12M	\$7M	\$7.44M	\$10.6M	\$8.14M	\$10.1M	\$8.45M	\$10.6M	\$9.3M	\$7.34M	\$6.94M	\$5.31M
Percent Change from Prior Year	8%	21%	-14%	14%	9%	-2%	63%	5%	12%	37%	17%	-49%	1%

Closed Sales by Property Type

The percentage of residential properties sold each month by property type.

Filters Used

State: VT
County: Bennington County, Vermont
Property Type: Condo/Townhouse/Apt, Single Family Residence



Condo/Townhouse	24%	10%	29%	18%	21%	15%	4%	10%	26%	18%	18%	11%	10%
Single Family Residence	76%	90%	71%	82%	79%	85%	96%	90%	74%	82%	83%	89%	90%

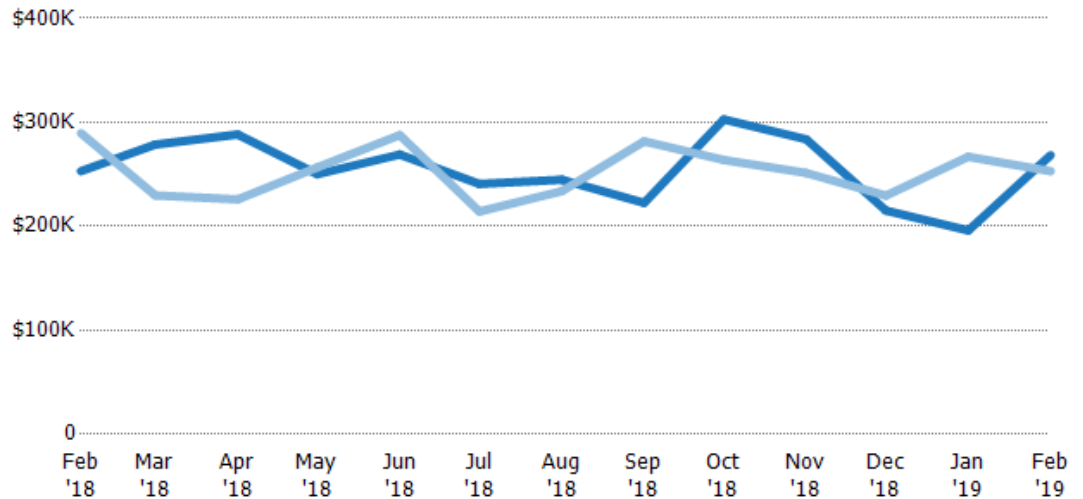
Average Sales Price

The average sales price of the residential properties sold each month.

Filters Used

State: VT
County: Bennington County, Vermont
Property Type: Condo/Townhouse/Apt, Single Family Residence

Month/Year	Price	% Chg.
Feb '19	\$268K	6.1%
Feb '18	\$253K	-12.6%
Feb '17	\$290K	-28.8%



Current Year	\$253K	\$279K	\$288K	\$250K	\$269K	\$241K	\$245K	\$223K	\$303K	\$284K	\$215K	\$196K	\$268K
Prior Year	\$290K	\$230K	\$226K	\$257K	\$288K	\$214K	\$234K	\$282K	\$264K	\$251K	\$229K	\$267K	\$253K
Percent Change from Prior Year	-13%	21%	28%	-3%	-6%	12%	5%	-21%	15%	13%	-6%	-27%	6%

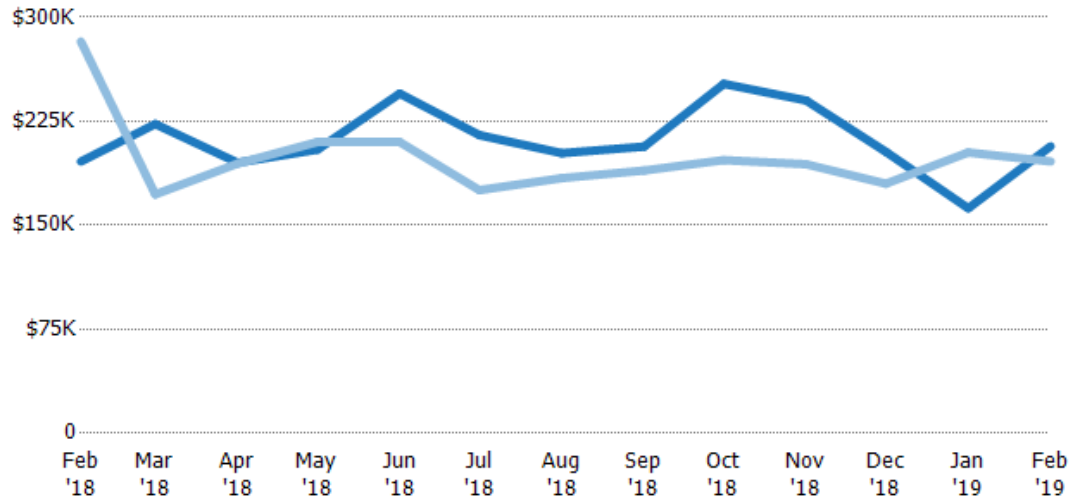
Median Sales Price

The median sales price of the residential properties sold each month.

Filters Used

State: VT
County: Bennington County, Vermont
Property Type: Condo/Townhouse/Apt, Single Family Residence

Month/Year	Price	% Chg.
Feb '19	\$207K	5.6%
Feb '18	\$196K	-30.6%
Feb '17	\$283K	-47.1%



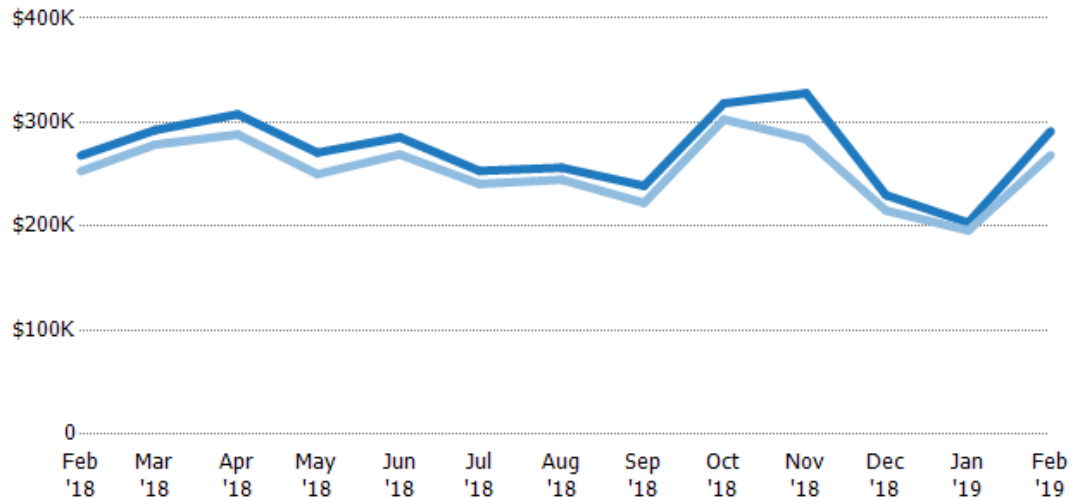
Current Year	\$196K	\$223K	\$195K	\$205K	\$245K	\$215K	\$202K	\$207K	\$252K	\$240K	\$203K	\$162K	\$207K
Prior Year	\$283K	\$172K	\$195K	\$210K	\$210K	\$175K	\$184K	\$190K	\$197K	\$194K	\$180K	\$203K	\$196K
Percent Change from Prior Year	-31%	29%	0%	-3%	17%	23%	10%	9%	28%	24%	13%	-20%	6%

Average Sales Price vs Average Listing Price

The average sales price as a percentage of the average listing price for properties sold each month.

Filters Used

State: VT
County: Bennington County, Vermont
Property Type: Condo/Townhouse/Apt, Single Family Residence



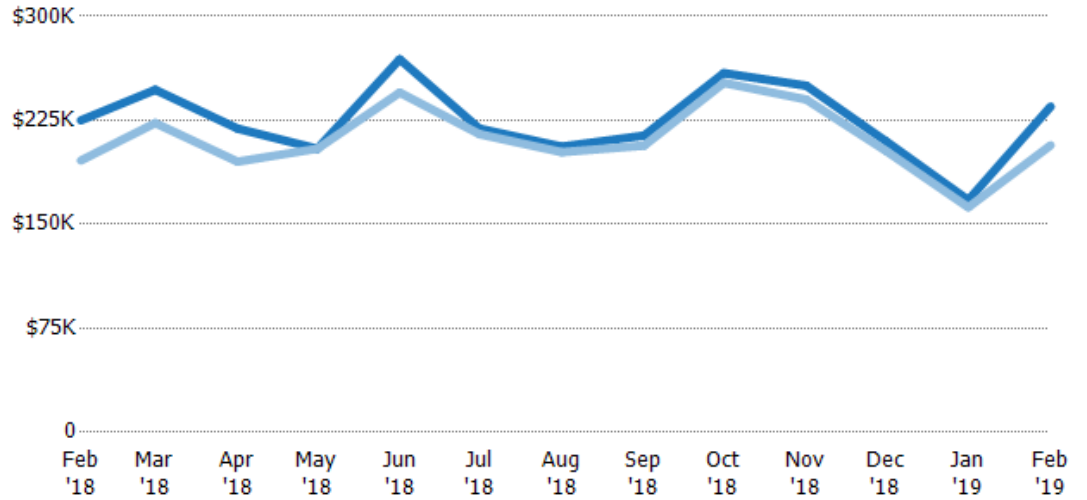
Avg List Price	\$268K	\$292K	\$308K	\$271K	\$286K	\$253K	\$256K	\$239K	\$318K	\$328K	\$230K	\$203K	\$291K
Avg Sales Price	\$253K	\$279K	\$288K	\$250K	\$269K	\$241K	\$245K	\$223K	\$303K	\$284K	\$215K	\$196K	\$268K
Avg Sales Price as a % of Avg List Price	94%	95%	94%	92%	94%	95%	96%	93%	95%	87%	94%	96%	92%

Median Sales Price vs Median Listing Price

The median sales price as a percentage of the median listing price for properties sold each month.

Filters Used

State: VT
County: Bennington County, Vermont
Property Type: Condo/Townhouse/Apt, Single Family Residence



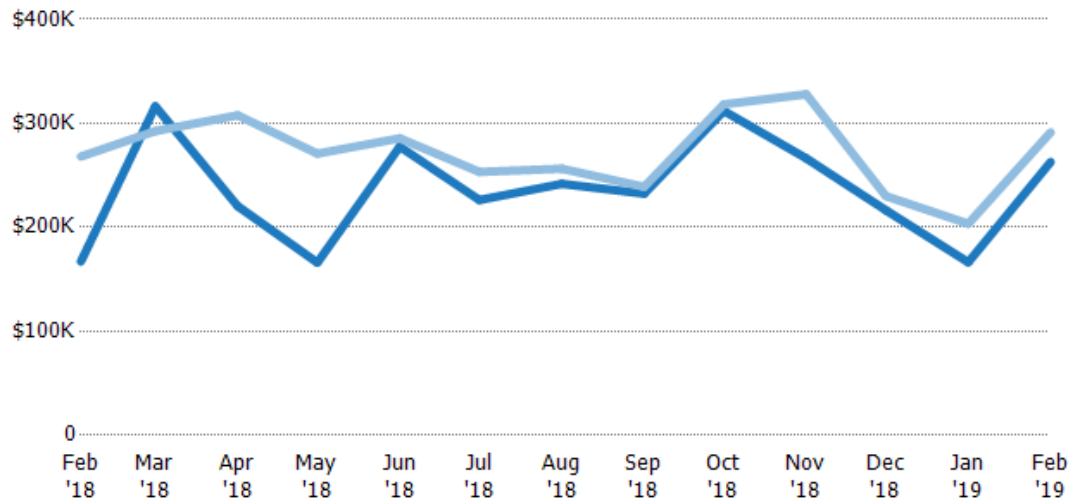
Median List Price	\$225K	\$247K	\$219K	\$204K	\$269K	\$219K	\$206K	\$214K	\$259K	\$250K	\$210K	\$167K	\$235K
Median Sales Price	\$196K	\$223K	\$195K	\$205K	\$245K	\$215K	\$202K	\$207K	\$252K	\$240K	\$203K	\$162K	\$207K
Med Sales Price as a % of Med List Price	87%	90%	89%	100%	91%	98%	98%	97%	97%	96%	97%	97%	88%

Average Sales Price vs Average Est Value

The average sales price as a percentage of the average AVM or RVM® valuation estimate for properties sold each month.

Filters Used

State: VT
County: Bennington County, Vermont
Property Type: Condo/Townhouse/Apt, Single Family Residence



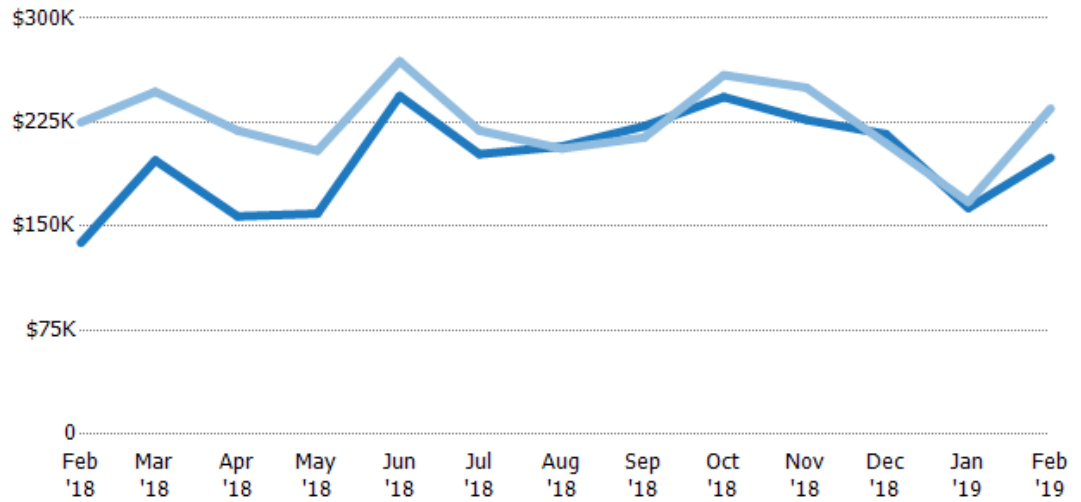
Avg Est Value	\$167K	\$316K	\$220K	\$166K	\$278K	\$226K	\$242K	\$232K	\$312K	\$266K	\$216K	\$166K	\$263K
Avg Sales Price	\$268K	\$292K	\$308K	\$271K	\$286K	\$253K	\$256K	\$239K	\$318K	\$328K	\$230K	\$203K	\$291K
Avg Sales Price as a % of Avg Est Value	160%	92%	140%	163%	103%	112%	106%	103%	102%	123%	106%	122%	111%

Median Sales Price vs Median Est Value

The median sales price as a percent of the median AVM or RVM® valuation estimate for properties sold each month.

Filters Used

State: VT
County: Bennington County,
Vermont
Property Type:
Condo/Townhouse/Apt, Single
Family Residence



Median Est Value	\$138K	\$198K	\$157K	\$159K	\$244K	\$202K	\$208K	\$222K	\$243K	\$227K	\$216K	\$163K	\$199K
Median Sales Price	\$225K	\$247K	\$219K	\$204K	\$269K	\$219K	\$206K	\$214K	\$259K	\$250K	\$210K	\$167K	\$235K
Med Sales Price as a % of Med Est Value	163%	125%	139%	128%	110%	108%	99%	96%	107%	110%	97%	103%	118%