

Summary of Key Listing and Sales Metrics

A summary of the key metrics selected to be included in the report. MLS sources where licensed.

Key Metrics	Feb 2019	Feb 2018	+ / -	YTD 2019	YTD 2018	+ / -
Listing Activity Charts Metrics						
New Listing Count	42	35	+20%	86	71	+21.1%
New Listing Volume	\$15,679,200	\$11,731,999	+33.6%	\$30,981,900	\$25,615,987	+20.9%
Active Listing Count	365	394	-7.4%	N/A	N/A	
Active Listing Volume	\$162,399,997	\$165,171,187	-1.7%	N/A	N/A	
Average Listing Price	\$444,931	\$419,216	+6.1%	\$439,844	\$417,309	+5.4%
Median Listing Price	\$315,900	\$295,000	+7.1%	\$314,131	\$295,000	+6.5%
Median Days in RPR	206	206	+/-	198.66	198.86	-0.1%
Months of Inventory	20.3	16.4	+23.5%	17.8	18.8	-4.9%
Absorption Rate	4.93%	6.09%	-1.2%	5.61%	5.33%	+0.3%
Sales Activity Charts Metrics						
New Pending Sales Count	41	26	+57.7%	77	54	+42.6%
New Pending Sales Volume	\$11,639,800	\$7,031,600	+65.5%	\$20,427,200	\$13,465,100	+51.7%
Pending Sales Count	84	42	+100%	N/A	N/A	
Pending Sales Volume	\$22,555,500	\$11,225,100	+100.9%	N/A	N/A	
Closed Sales Count	20	18	+11.1%	38	42	-9.5%
Closed Sales Volume	\$5,367,675	\$4,746,400	+13.1%	\$8,894,675	\$11,484,400	-22.5%
Average Sales Price	\$268,384	\$263,689	+1.8%	\$234,070	\$273,438	-14.4%
Median Sales Price	\$207,000	\$198,000	+4.5%	\$185,803	\$204,857	-9.3%

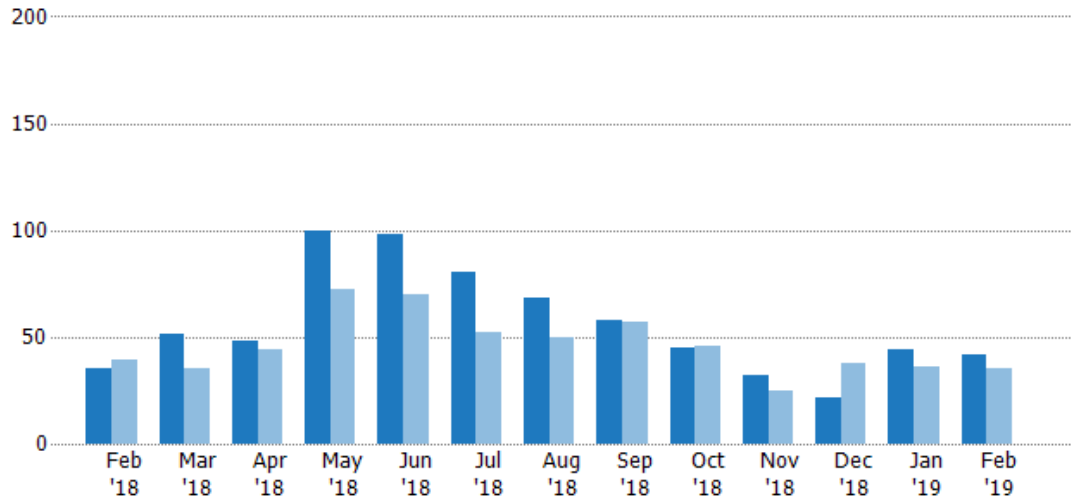
New Listings

The number of new residential listings that were added each month.

Filters Used

State: VT
County: Bennington County, Vermont
Property Type: Condo/Townhouse/Apt, Single Family Residence

Month/Year	Count	% Chg.
Feb '19	42	20%
Feb '18	35	-10.3%
Feb '17	39	-7.7%



Current Year	35	51	48	100	98	80	68	58	45	32	22	44	42
Prior Year	39	35	44	72	70	52	50	57	46	25	38	36	35
Percent Change from Prior Year	-10%	46%	9%	39%	40%	54%	36%	2%	-2%	28%	-42%	22%	20%

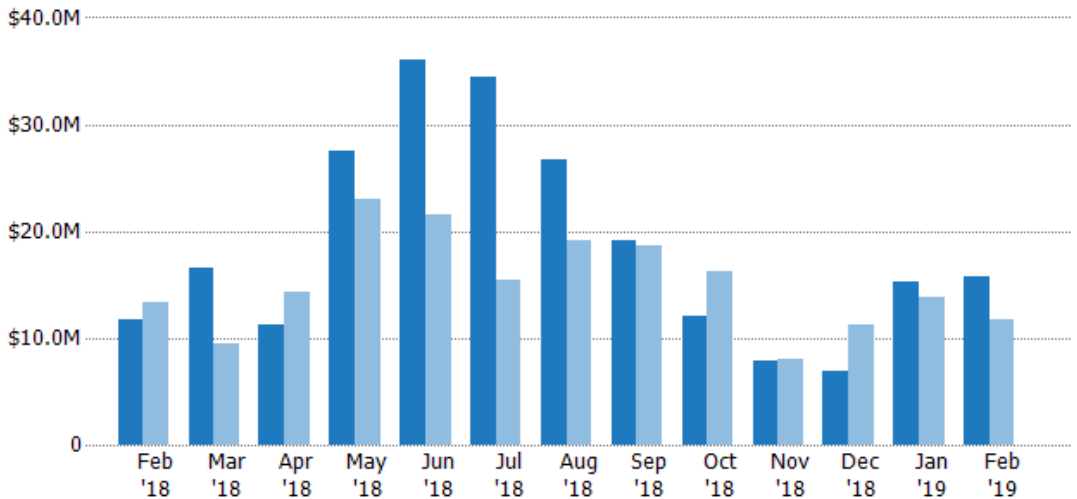
New Listing Volume

The sum of the listing price of residential listings that were added each month.

Filters Used

State: VT
County: Bennington County, Vermont
Property Type: Condo/Townhouse/Apt, Single Family Residence

Month/Year	Volume	% Chg.
Feb '19	\$15.7M	33.6%
Feb '18	\$11.7M	-12.2%
Feb '17	\$13.4M	-13.7%



Current Year	\$11.7M	\$16.5M	\$11.2M	\$27.5M	\$36M	\$34.5M	\$26.7M	\$19.2M	\$12.1M	\$7.91M	\$6.87M	\$15.3M	\$15.7M
Prior Year	\$13.4M	\$9.44M	\$14.3M	\$23.1M	\$21.6M	\$15.4M	\$19.1M	\$18.7M	\$16.2M	\$7.98M	\$11.3M	\$13.9M	\$11.7M
Percent Change from Prior Year	-12%	75%	-22%	19%	67%	124%	40%	2%	-26%	-1%	-39%	10%	34%

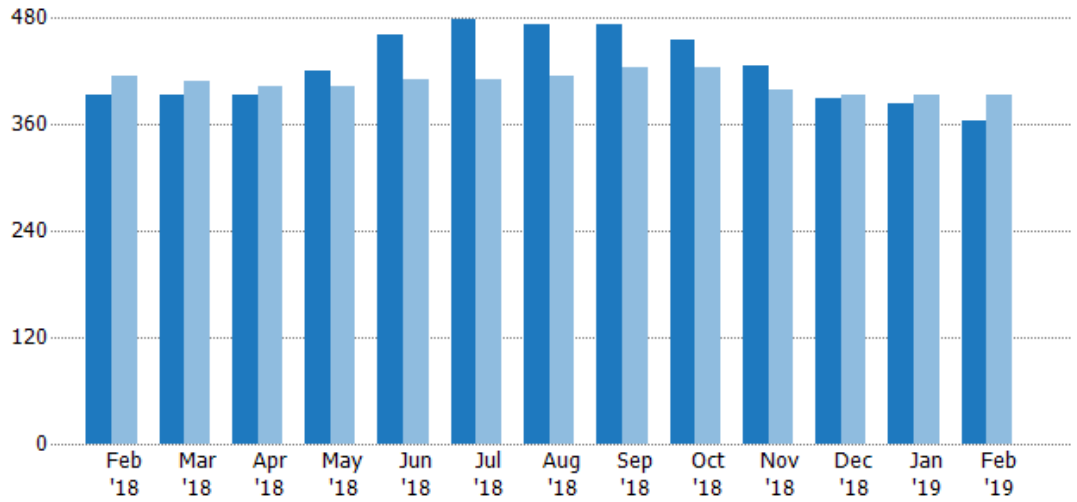
Active Listings

The number of active residential listings at the end of each month.

Filters Used

State: VT
County: Bennington County, Vermont
Property Type: Condo/Townhouse/Apt, Single Family Residence

Month/Year	Count	% Chg.
Feb '19	365	-7.4%
Feb '18	394	-4.8%
Feb '17	414	4.1%



Current Year	394	394	393	421	461	479	473	472	456	427	390	384	365
Prior Year	414	408	404	404	410	410	414	424	424	400	393	394	394
Percent Change from Prior Year	-5%	-3%	-3%	4%	12%	17%	14%	11%	8%	7%	-1%	-3%	-7%

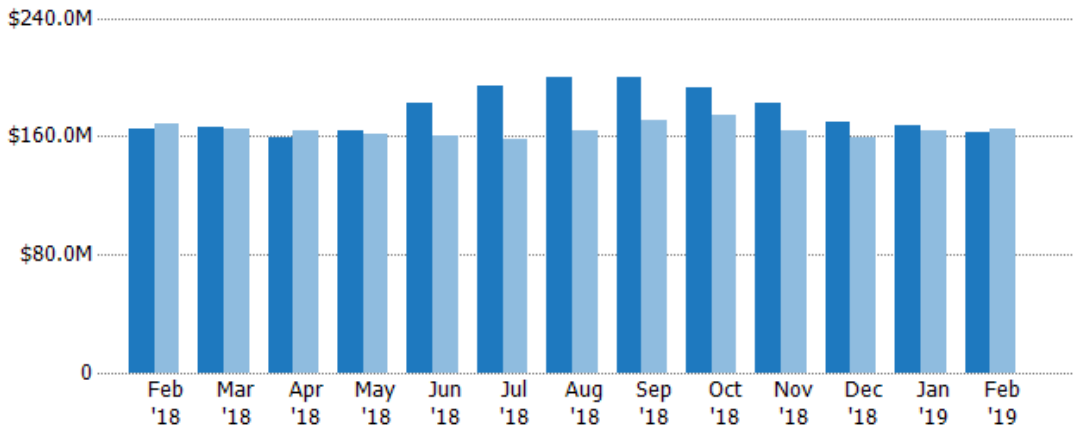
Active Listing Volume

The sum of the listing price of active residential listings at the end of each month.

Filters Used

State: VT
County: Bennington County, Vermont
Property Type: Condo/Townhouse/Apt, Single Family Residence

Month/Year	Volume	% Chg.
Feb '19	\$162M	-1.7%
Feb '18	\$165M	-2.2%
Feb '17	\$169M	3.7%



Current Year	\$165M	\$166M	\$159M	\$164M	\$182M	\$194M	\$200M	\$200M	\$193M	\$183M	\$170M	\$167M	\$162M
Prior Year	\$169M	\$165M	\$164M	\$162M	\$160M	\$158M	\$164M	\$171M	\$174M	\$163M	\$159M	\$164M	\$165M
Percent Change from Prior Year	-2%	1%	-3%	1%	14%	23%	22%	17%	11%	12%	7%	2%	-2%

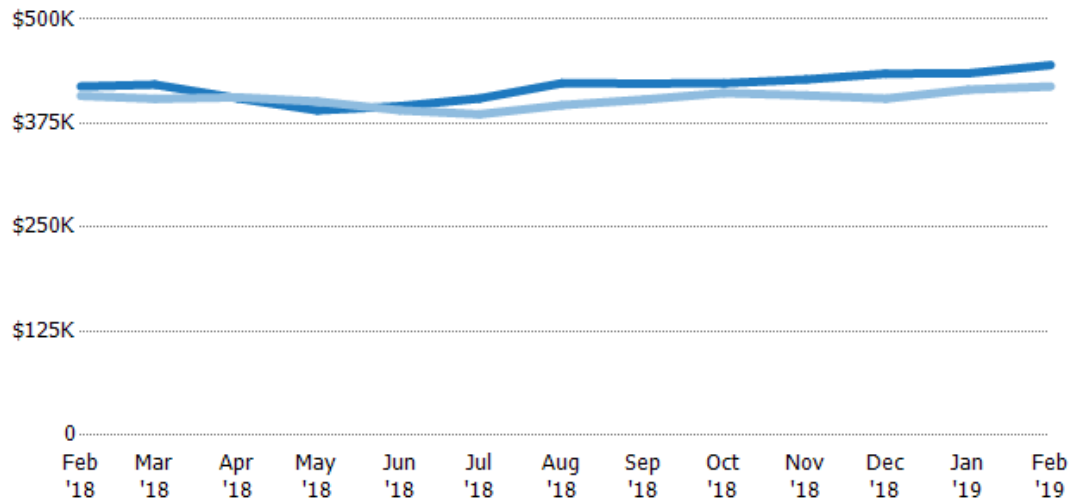
Average Listing Price

The average listing price of active residential listings at the end of each month.

Filters Used

State: VT
County: Bennington County, Vermont
Property Type: Condo/Townhouse/Apt, Single Family Residence

Month/Year	Price	% Chg.
Feb '19	\$445K	6.1%
Feb '18	\$419K	2.8%
Feb '17	\$408K	-0.4%



Current Year	\$419K	\$421K	\$405K	\$391K	\$396K	\$405K	\$423K	\$423K	\$423K	\$428K	\$435K	\$435K	\$445K
Prior Year	\$408K	\$404K	\$406K	\$401K	\$391K	\$386K	\$397K	\$404K	\$411K	\$408K	\$405K	\$415K	\$419K
Percent Change from Prior Year	3%	4%	0%	-3%	1%	5%	7%	5%	3%	5%	7%	5%	6%

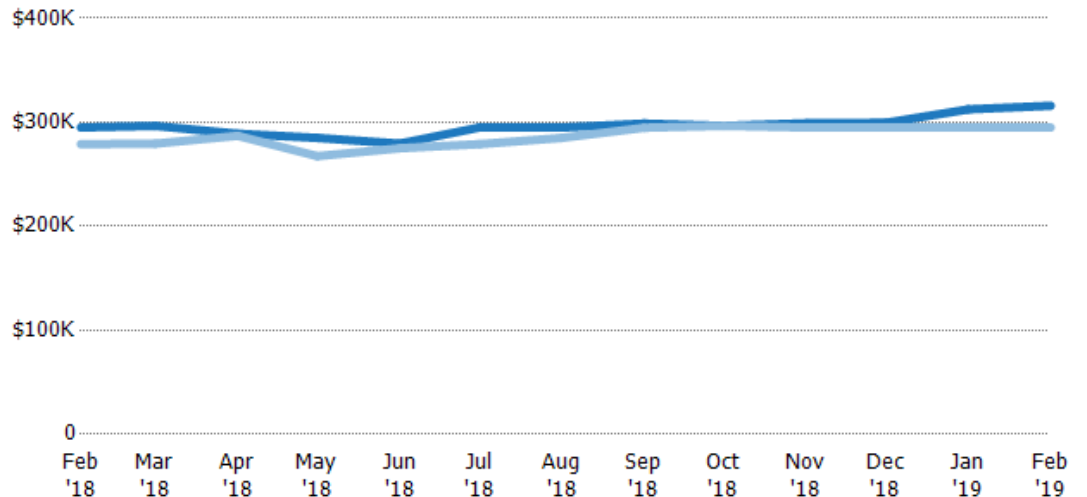
Median Listing Price

The median listing price of active residential listings at the end of each month.

Filters Used

State: VT
County: Bennington County, Vermont
Property Type: Condo/Townhouse/Apt, Single Family Residence

Month/Year	Price	% Chg.
Feb '19	\$316K	7.1%
Feb '18	\$295K	5.7%
Feb '17	\$279K	0%



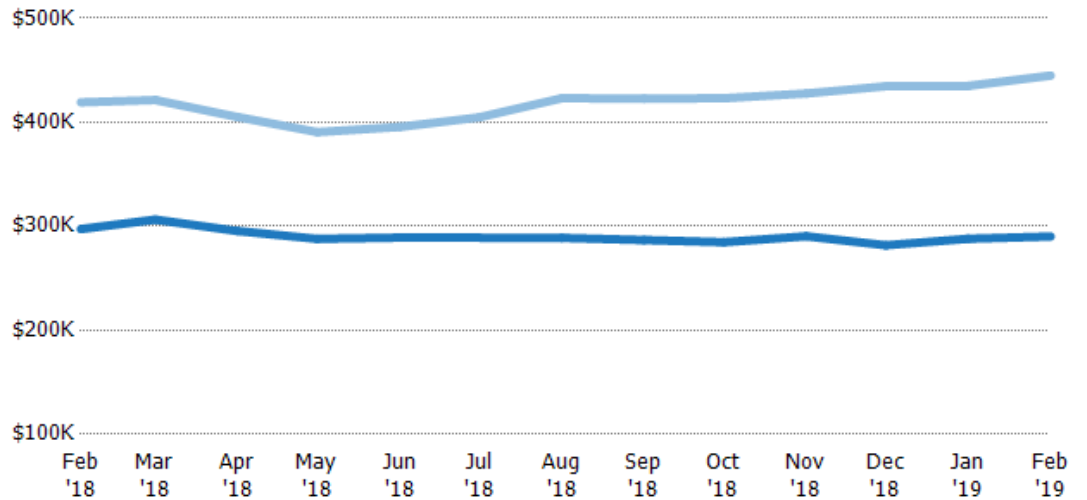
Current Year	\$295K	\$297K	\$289K	\$285K	\$280K	\$295K	\$295K	\$299K	\$297K	\$299K	\$300K	\$312K	\$316K
Prior Year	\$279K	\$279K	\$287K	\$267K	\$275K	\$279K	\$285K	\$295K	\$297K	\$295K	\$295K	\$295K	\$295K
Percent Change from Prior Year	6%	6%	1%	7%	2%	6%	4%	1%	0%	1%	2%	6%	7%

Average Listing Price vs Average Est Value

The average listing price as a percentage of the average AVM or RVM® valuation estimate for active listings each month.

Filters Used

State: VT
County: Bennington County, Vermont
Property Type: Condo/Townhouse/Apt, Single Family Residence



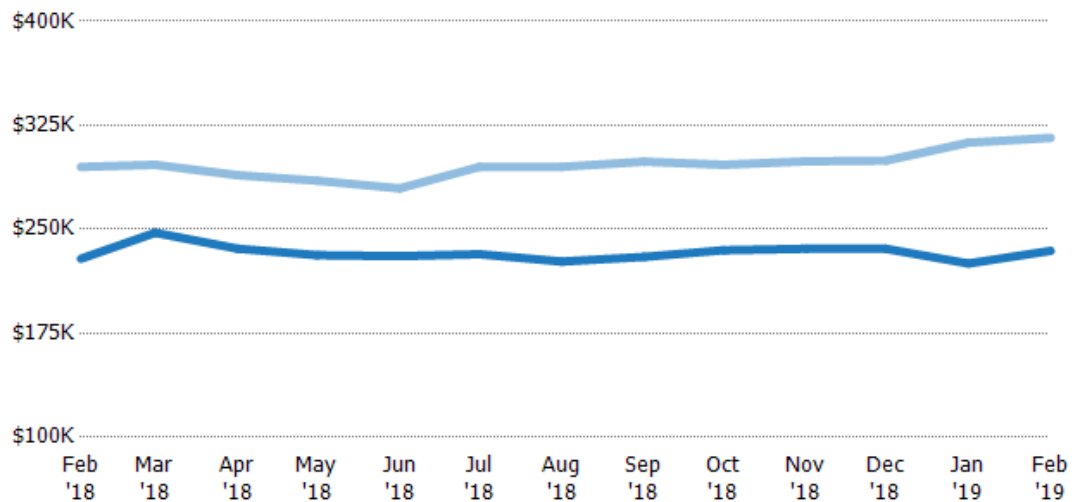
Avg Est Value	\$297K	\$306K	\$295K	\$288K	\$289K	\$289K	\$289K	\$287K	\$285K	\$290K	\$282K	\$288K	\$290K
Avg Listing Price	\$419K	\$421K	\$405K	\$391K	\$396K	\$405K	\$423K	\$423K	\$423K	\$428K	\$435K	\$435K	\$445K
Avg Listing Price as a % of Avg Est Value	141%	138%	137%	136%	137%	140%	146%	147%	149%	147%	154%	151%	153%

Median Listing Price vs Median Est Value

The median listing price as a percentage of the median AVM or RVM® valuation estimate for active listings each month.

Filters Used

State: VT
County: Bennington County, Vermont
Property Type: Condo/Townhouse/Apt, Single Family Residence



Median Est Value	\$229K	\$248K	\$236K	\$231K	\$231K	\$232K	\$227K	\$230K	\$235K	\$236K	\$236K	\$225K	\$234K
Median Listing Price	\$295K	\$297K	\$289K	\$285K	\$280K	\$295K	\$295K	\$299K	\$297K	\$299K	\$300K	\$312K	\$316K
Med Listing Price as a % of Med Est Value	129%	120%	122%	123%	121%	127%	130%	130%	126%	127%	127%	139%	135%

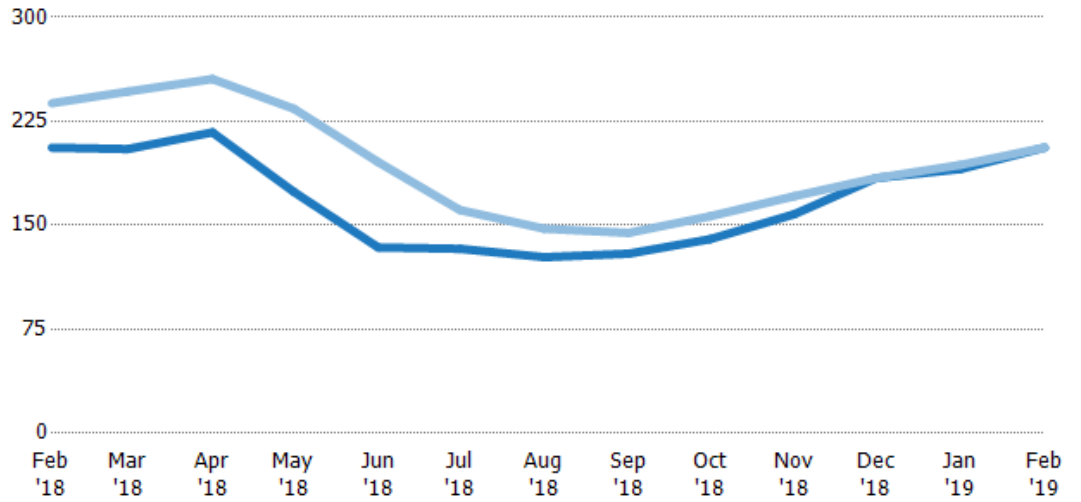
Median Days in RPR

The median number of days between when residential properties are first displayed as active listings in RPR and when accepted offers have been noted in RPR.

Filters Used

State: VT
County: Bennington County, Vermont
Property Type: Condo/Townhouse/Apt, Single Family Residence

Month/Year	Days	% Chg.
Feb '19	206	0%
Feb '18	206	-13.4%
Feb '17	238	-13.4%



Current Year	206	205	217	174	134	133	127	130	140	158	184	191	206
Prior Year	238	247	256	234	196	161	148	145	157	171	184	194	206
Percent Change from Prior Year	-13%	-17%	-15%	-26%	-31%	-17%	-14%	-10%	-11%	-8%	0%	-2%	0%

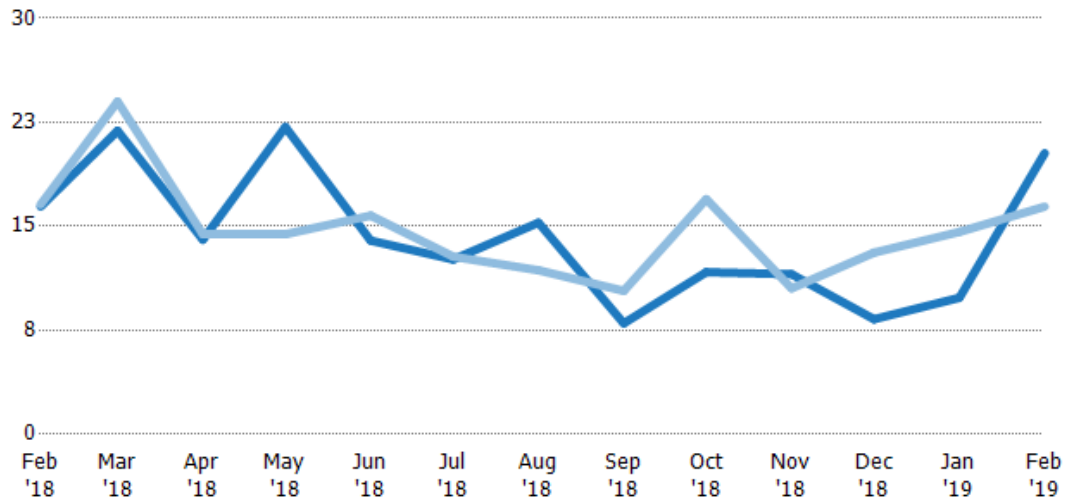
Months of Inventory

The number of months it would take to exhaust active listings at the current sales rate.

Filters Used

State: VT
County: Bennington County, Vermont
Property Type: Condo/Townhouse/Apt, Single Family Residence

Month/Year	Months	% Chg.
Feb '19	20.3	23.5%
Feb '18	16.4	-0.9%
Feb '17	16.6	23.9%



Current Year	16.4	21.9	14	22.2	14	12.6	15.3	8	11.7	11.5	8.3	9.85	20.3
Prior Year	16.6	24	14.4	14.4	15.8	12.8	11.8	10.3	17	10.5	13.1	14.6	16.4
Percent Change from Prior Year	-1%	-9%	-3%	54%	-11%	-2%	29%	-23%	-31%	10%	-37%	-33%	24%

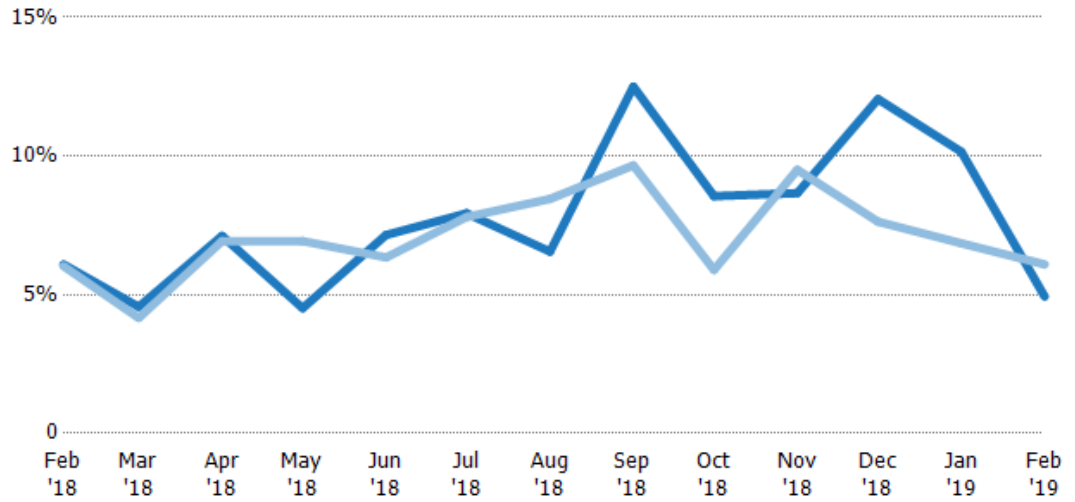
Absorption Rate

The percentage of inventory sold per month.

Filters Used

State: VT
County: Bennington County,
Vermont
Property Type:
Condo/Townhouse/Apt, Single
Family Residence

Month/ Year	Rate	Chg.
Feb '19	5%	1.2%
Feb '18	6%	-0.1%
Feb '17	6%	-19.2%



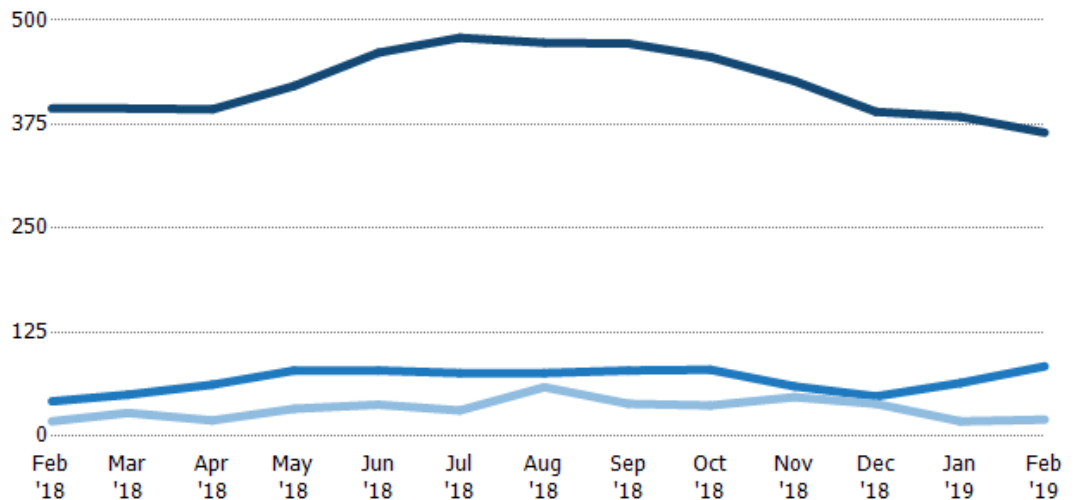
Current Year	6%	5%	7%	5%	7%	8%	7%	13%	9%	9%	12%	10%	5%
Prior Year	6%	4%	7%	7%	6%	8%	8%	10%	6%	10%	8%	7%	6%
Change from Prior Year	0%	0%	0%	2%	-1%	0%	2%	-3%	-3%	1%	-4%	-3%	1%

Active/Pending/Sold Units

The number of residential properties that were Active, Pending and Sold each month.

Filters Used

State: VT
County: Bennington County,
Vermont
Property Type:
Condo/Townhouse/Apt, Single
Family Residence



Active	394	394	393	421	461	479	473	472	456	427	390	384	365
Pending	42	50	62	79	79	76	76	79	80	60	48	64	84
Sold	18	28	19	33	38	31	59	39	37	47	39	18	20

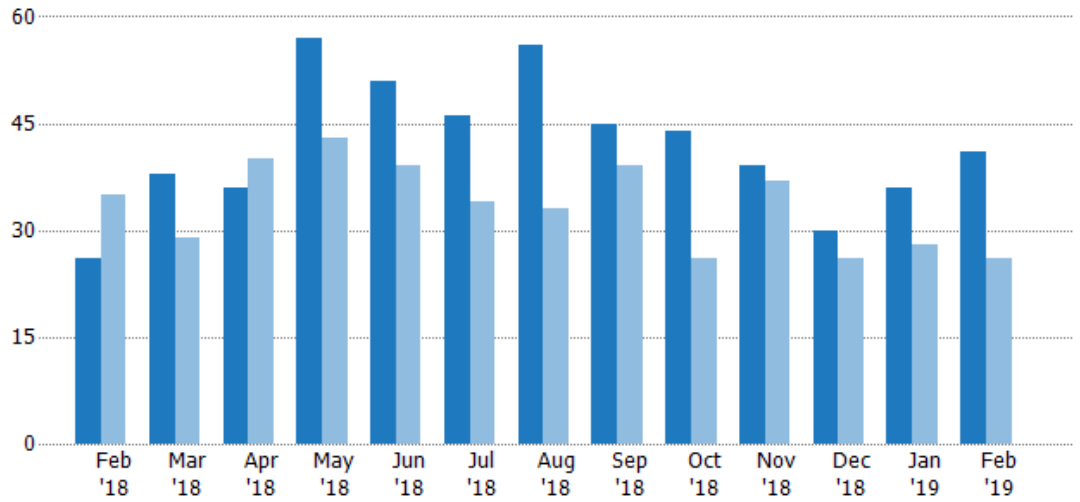
New Pending Sales

The number of residential properties with accepted offers that were added each month.

Filters Used

State: VT
County: Bennington County, Vermont
Property Type: Condo/Townhouse/Apt, Single Family Residence

Month/Year	Count	% Chg.
Feb '19	41	57.7%
Feb '18	26	-25.7%
Feb '17	35	-17.1%



Current Year	26	38	36	57	51	46	56	45	44	39	30	36	41
Prior Year	35	29	40	43	39	34	33	39	26	37	26	28	26
Percent Change from Prior Year	-26%	31%	-10%	33%	31%	35%	70%	15%	69%	5%	15%	29%	58%

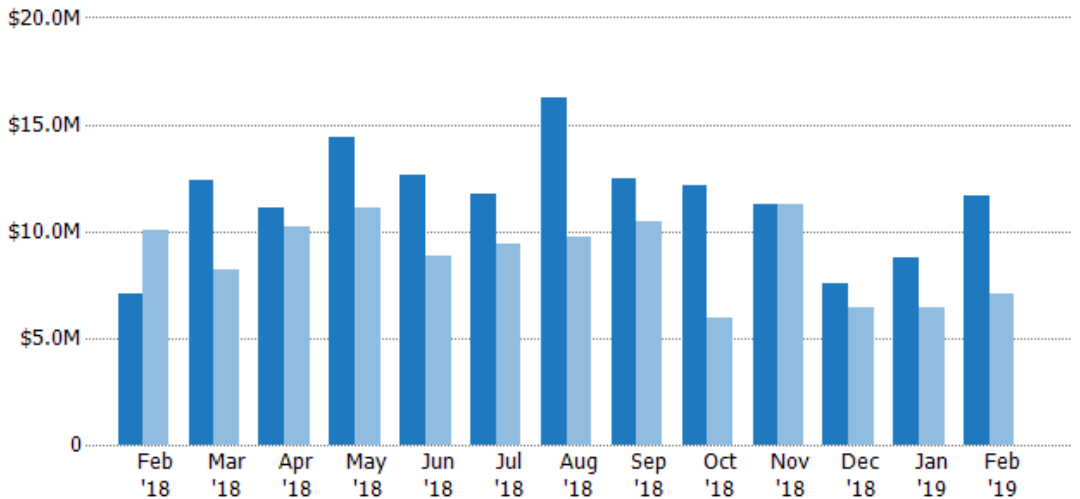
New Pending Sales Volume

The sum of the sales price of residential properties with accepted offers that were added each month.

Filters Used

State: VT
County: Bennington County, Vermont
Property Type: Condo/Townhouse/Apt, Single Family Residence

Month/Year	Volume	% Chg.
Feb '19	\$11.6M	65.5%
Feb '18	\$7.03M	-29.8%
Feb '17	\$10M	-21.6%



Current Year	\$7.03M	\$12.4M	\$11.1M	\$14.4M	\$12.6M	\$11.7M	\$16.2M	\$12.5M	\$12.2M	\$11.3M	\$7.55M	\$8.79M	\$11.6M
Prior Year	\$10M	\$8.2M	\$10.2M	\$11.1M	\$8.85M	\$9.39M	\$9.75M	\$10.5M	\$5.93M	\$11.2M	\$6.39M	\$6.43M	\$7.03M
Percent Change from Prior Year	-30%	51%	9%	29%	43%	25%	67%	20%	105%	0%	18%	37%	66%

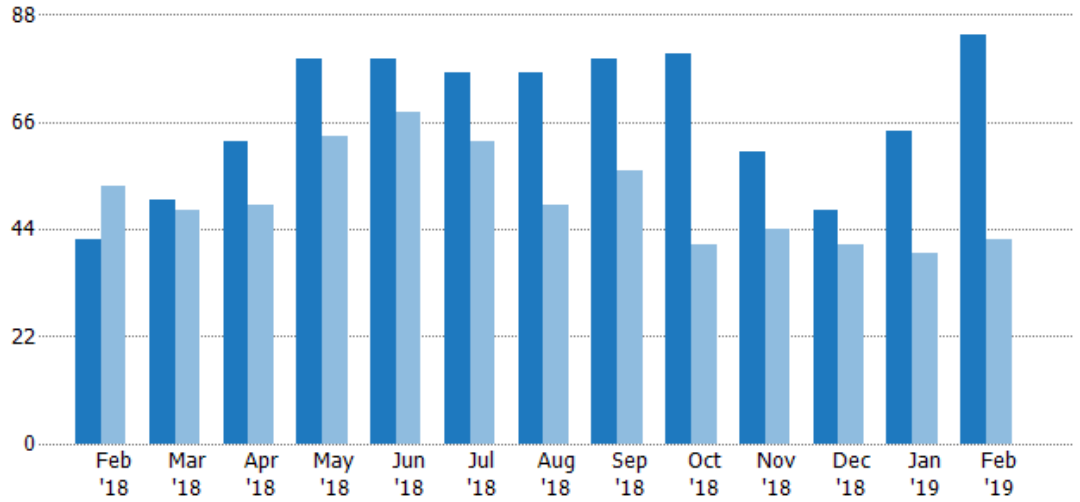
Pending Sales

The number of residential properties with accepted offers that were available at the end each month.

Filters Used

State: VT
County: Bennington County, Vermont
Property Type: Condo/Townhouse/Apt, Single Family Residence

Month/Year	Count	% Chg.
Feb '19	84	100%
Feb '18	42	-20.8%
Feb '17	53	-5.7%



Current Year	42	50	62	79	79	76	76	79	80	60	48	64	84
Prior Year	53	48	49	63	68	62	49	56	41	44	41	39	42
Percent Change from Prior Year	-21%	4%	27%	25%	16%	23%	55%	41%	95%	36%	17%	64%	100%

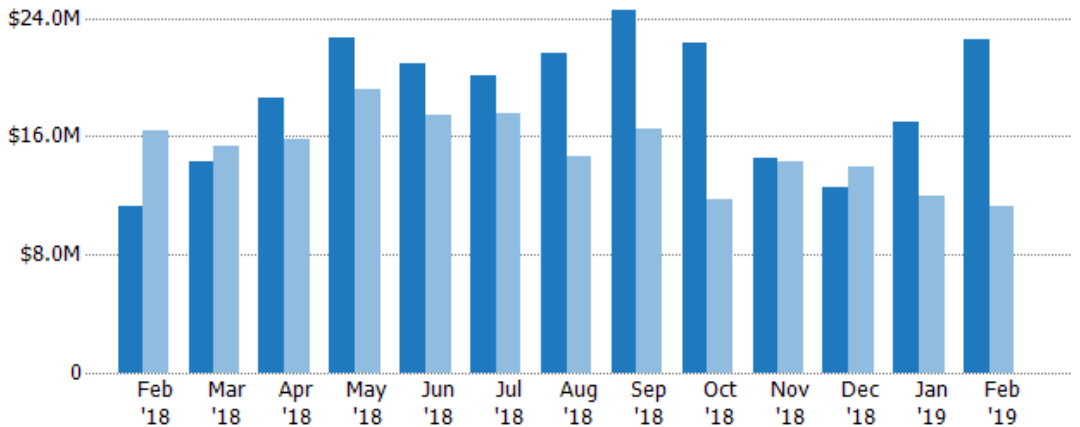
Pending Sales Volume

The sum of the sales price of residential properties with accepted offers that were available at the end of each month.

Filters Used

State: VT
County: Bennington County, Vermont
Property Type: Condo/Townhouse/Apt, Single Family Residence

Month/Year	Volume	% Chg.
Feb '19	\$22.6M	100.9%
Feb '18	\$11.2M	-31.3%
Feb '17	\$16.3M	-17.7%



Current Year	\$11.2M	\$14.3M	\$18.6M	\$22.7M	\$20.9M	\$20.1M	\$21.6M	\$24.5M	\$22.3M	\$14.5M	\$12.6M	\$17M	\$22.6M
Prior Year	\$16.3M	\$15.4M	\$15.8M	\$19.2M	\$17.4M	\$17.5M	\$14.7M	\$16.6M	\$11.8M	\$14.2M	\$13.9M	\$11.9M	\$11.2M
Percent Change from Prior Year	-31%	-7%	17%	18%	20%	15%	48%	48%	89%	2%	-10%	43%	101%

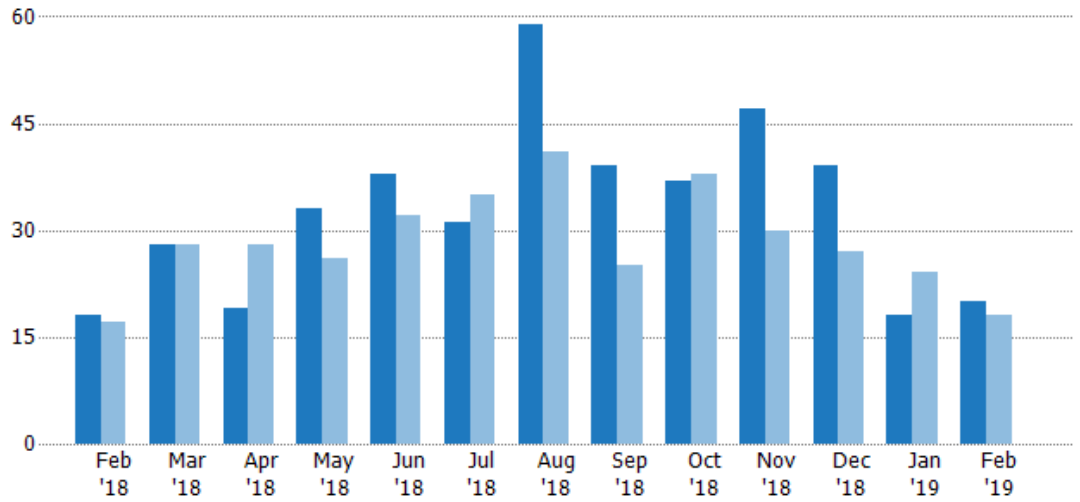
Closed Sales

The total number of residential properties sold each month.

Filters Used

State: VT
County: Bennington County, Vermont
Property Type: Condo/Townhouse/Apt, Single Family Residence

Month/Year	Count	% Chg.
Feb '19	20	11.1%
Feb '18	18	5.9%
Feb '17	17	-11.8%



Current Year	18	28	19	33	38	31	59	39	37	47	39	18	20
Prior Year	17	28	28	26	32	35	41	25	38	30	27	24	18
Percent Change from Prior Year	6%	0%	-32%	27%	19%	-11%	44%	56%	-3%	57%	44%	-25%	11%

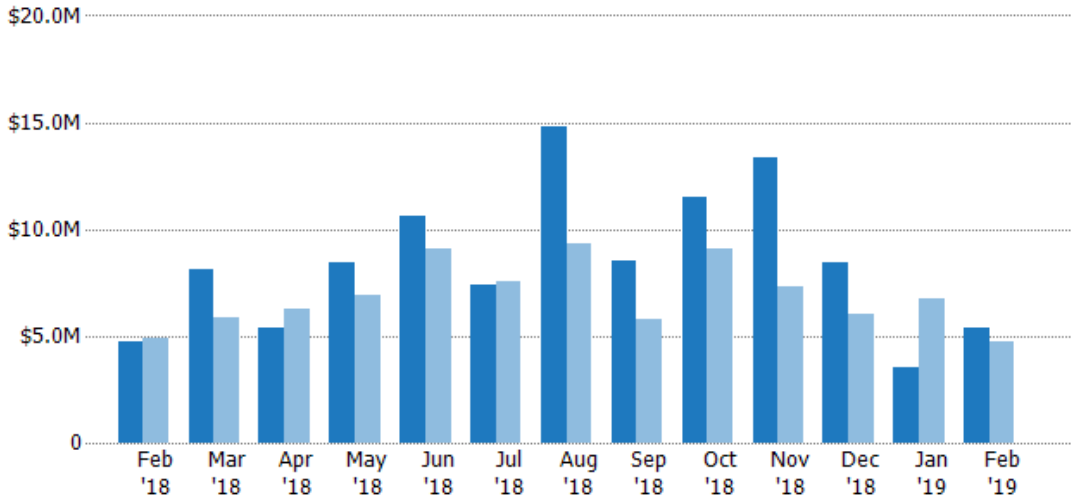
Closed Sales Volume

The sum of the sales price of residential properties sold each month.

Filters Used

State: VT
County: Bennington County, Vermont
Property Type: Condo/Townhouse/Apt, Single Family Residence

Month/Year	Volume	% Chg.
Feb '19	\$5.37M	13.1%
Feb '18	\$4.75M	-3.6%
Feb '17	\$4.92M	-32.4%



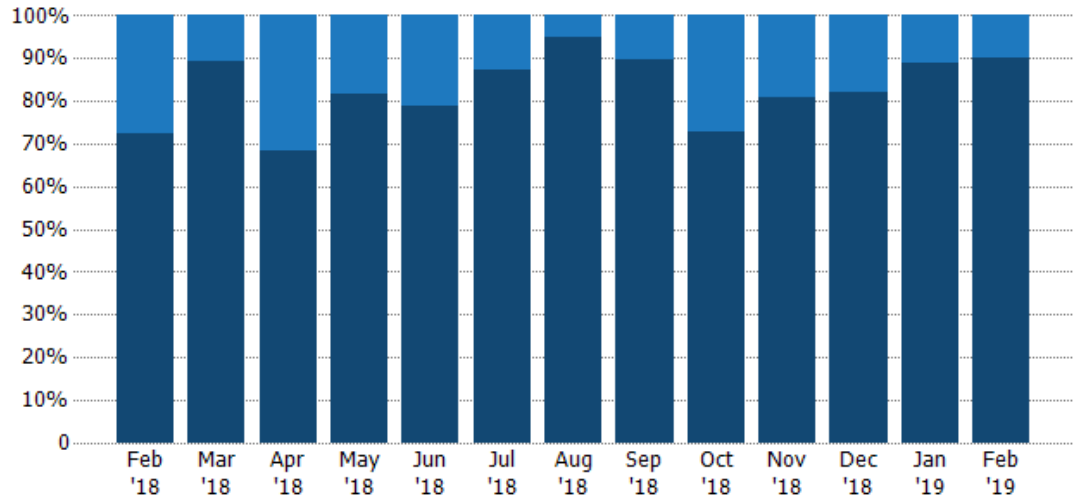
Current Year	\$4.75M	\$8.11M	\$5.35M	\$8.48M	\$10.6M	\$7.4M	\$14.8M	\$8.5M	\$11.5M	\$13.4M	\$8.45M	\$3.53M	\$5.37M
Prior Year	\$4.92M	\$5.85M	\$6.28M	\$6.9M	\$9.07M	\$7.54M	\$9.32M	\$5.8M	\$9.09M	\$7.3M	\$5.99M	\$6.74M	\$4.75M
Percent Change from Prior Year	-4%	38%	-15%	23%	17%	-2%	59%	47%	26%	83%	41%	-48%	13%

Closed Sales by Property Type

The percentage of residential properties sold each month by property type.

Filters Used

State: VT
County: Bennington County,
Vermont
Property Type:
Condo/Townhouse/Apt, Single
Family Residence



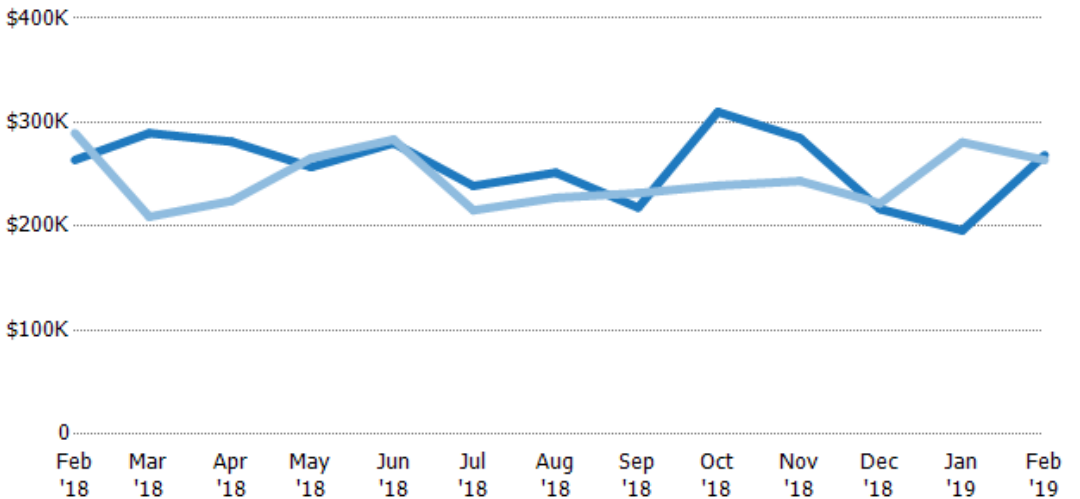
Condo/Townhouse	28%	11%	32%	18%	21%	13%	5%	10%	27%	19%	18%	11%	10%
Single Family Residence	72%	89%	68%	82%	79%	87%	95%	90%	73%	81%	82%	89%	90%

Average Sales Price

The average sales price of the residential properties sold each month.

Filters Used

State: VT
County: Bennington County,
Vermont
Property Type:
Condo/Townhouse/Apt, Single
Family Residence



Current Year	\$264K	\$290K	\$281K	\$257K	\$280K	\$239K	\$251K	\$218K	\$310K	\$285K	\$217K	\$196K	\$268K
Prior Year	\$290K	\$209K	\$224K	\$266K	\$283K	\$215K	\$227K	\$232K	\$239K	\$243K	\$222K	\$281K	\$264K
Percent Change from Prior Year	-9%	38%	25%	-3%	-1%	11%	11%	-6%	30%	17%	-2%	-30%	2%

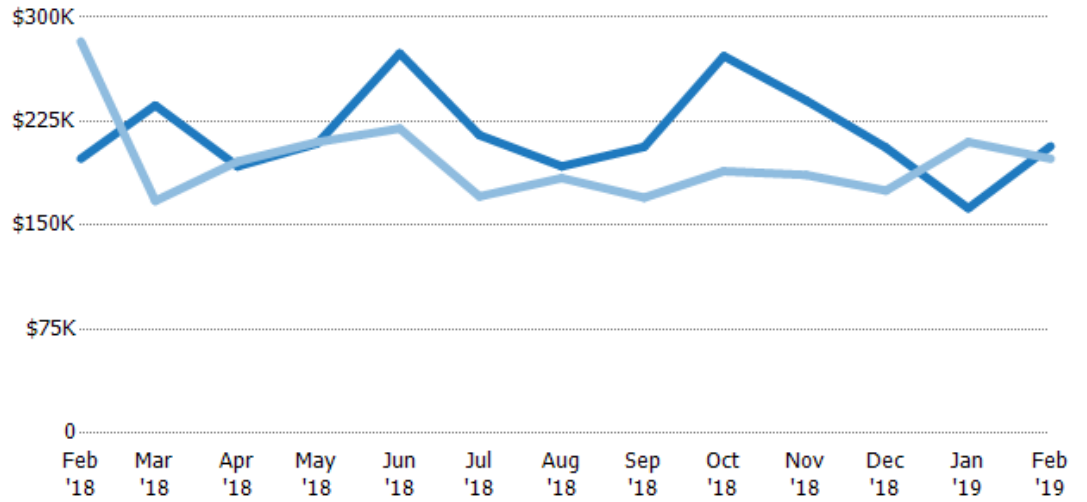
Median Sales Price

The median sales price of the residential properties sold each month.

Filters Used

State: VT
County: Bennington County, Vermont
Property Type: Condo/Townhouse/Apt, Single Family Residence

Month/Year	Price	% Chg.
Feb '19	\$207K	4.5%
Feb '18	\$198K	-29.9%
Feb '17	\$283K	-45.5%



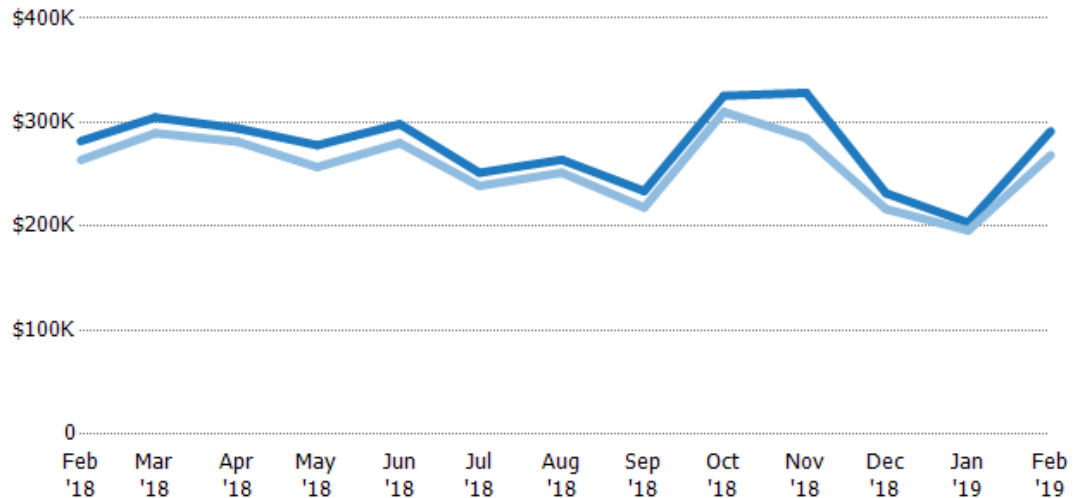
Current Year	\$198K	\$236K	\$193K	\$209K	\$274K	\$215K	\$193K	\$207K	\$272K	\$240K	\$206K	\$162K	\$207K
Prior Year	\$283K	\$168K	\$196K	\$210K	\$220K	\$171K	\$184K	\$170K	\$189K	\$186K	\$175K	\$210K	\$198K
Percent Change from Prior Year	-30%	41%	-2%	0%	25%	26%	5%	22%	44%	29%	18%	-23%	5%

Average Sales Price vs Average Listing Price

The average sales price as a percentage of the average listing price for properties sold each month.

Filters Used

State: VT
County: Bennington County, Vermont
Property Type: Condo/Townhouse/Apt, Single Family Residence



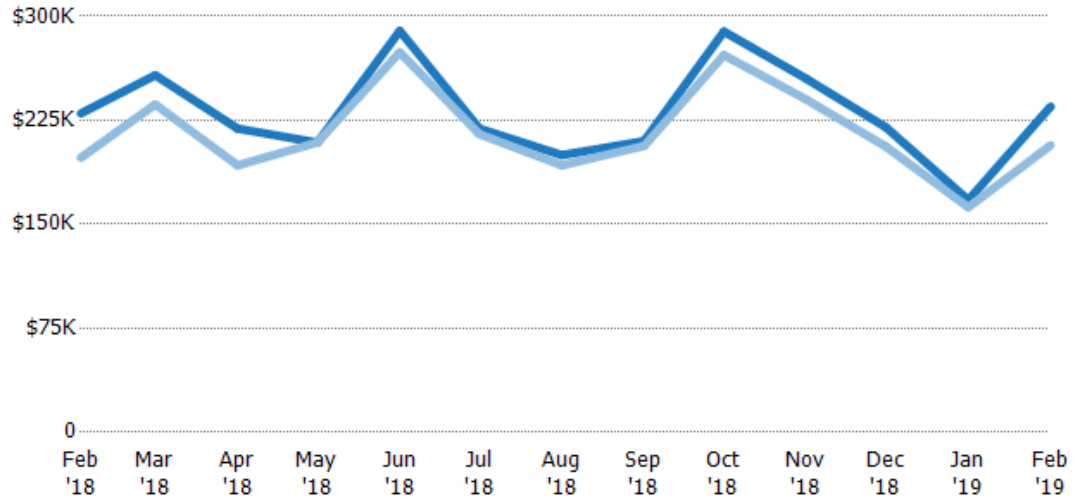
Avg List Price	\$282K	\$305K	\$294K	\$278K	\$298K	\$251K	\$264K	\$234K	\$325K	\$328K	\$232K	\$203K	\$291K
Avg Sales Price	\$264K	\$290K	\$281K	\$257K	\$280K	\$239K	\$251K	\$218K	\$310K	\$285K	\$217K	\$196K	\$268K
Avg Sales Price as a % of Avg List Price	94%	95%	96%	92%	94%	95%	95%	93%	95%	87%	93%	96%	92%

Median Sales Price vs Median Listing Price

The median sales price as a percentage of the median listing price for properties sold each month.

Filters Used

State: VT
County: Bennington County,
Vermont
Property Type:
Condo/Townhouse/Apt, Single
Family Residence



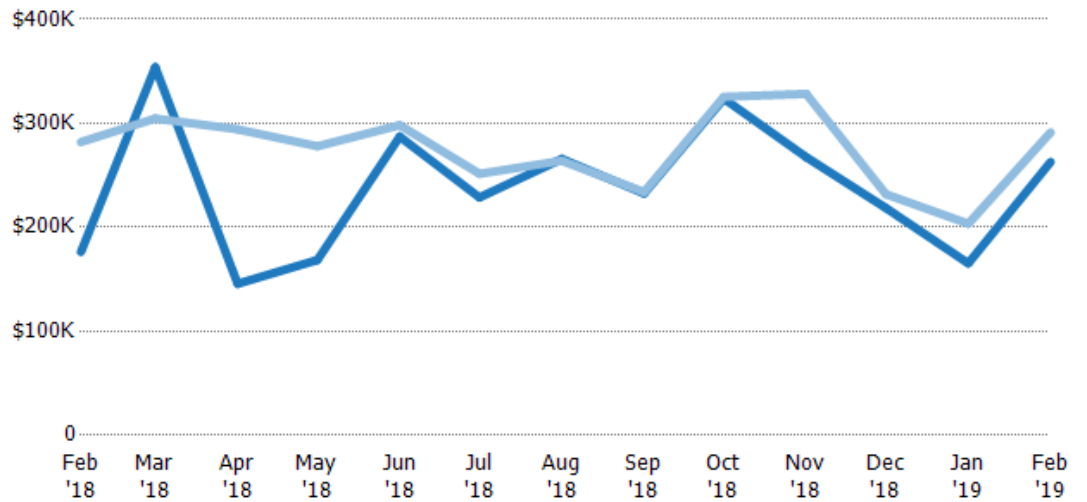
Median List Price	\$230K	\$258K	\$219K	\$209K	\$289K	\$219K	\$200K	\$210K	\$289K	\$255K	\$220K	\$167K	\$235K
Median Sales Price	\$198K	\$236K	\$193K	\$209K	\$274K	\$215K	\$193K	\$207K	\$272K	\$240K	\$206K	\$162K	\$207K
Med Sales Price as a % of Med List Price	86%	92%	88%	100%	95%	98%	96%	98%	94%	94%	94%	97%	88%

Average Sales Price vs Average Est Value

The average sales price as a percentage of the average AVM or RVM® valuation estimate for properties sold each month.

Filters Used

State: VT
County: Bennington County,
Vermont
Property Type:
Condo/Townhouse/Apt, Single
Family Residence



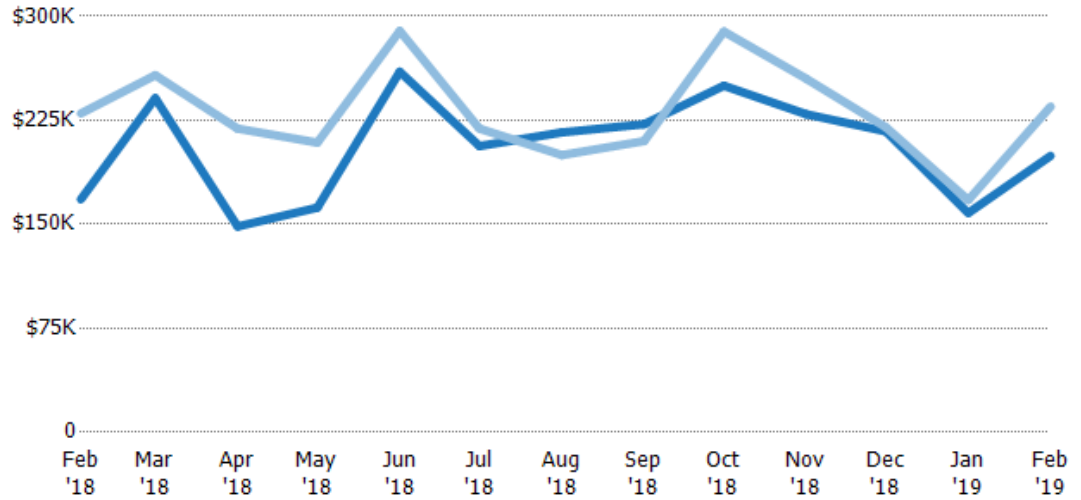
Avg Est Value	\$176K	\$354K	\$146K	\$168K	\$287K	\$229K	\$266K	\$233K	\$324K	\$267K	\$218K	\$165K	\$263K
Avg Sales Price	\$282K	\$305K	\$294K	\$278K	\$298K	\$251K	\$264K	\$234K	\$325K	\$328K	\$232K	\$203K	\$291K
Avg Sales Price as a % of Avg Est Value	160%	86%	202%	165%	104%	110%	99%	101%	101%	123%	106%	123%	111%

Median Sales Price vs Median Est Value

The median sales price as a percent of the median AVM or RVM® valuation estimate for properties sold each month.

Filters Used

State: VT
County: Bennington County,
Vermont
Property Type:
Condo/Townhouse/Apt, Single
Family Residence



Median Est Value	\$168K	\$241K	\$148K	\$162K	\$260K	\$206K	\$216K	\$222K	\$250K	\$229K	\$217K	\$158K	\$199K
Median Sales Price	\$230K	\$258K	\$219K	\$209K	\$289K	\$219K	\$200K	\$210K	\$289K	\$255K	\$220K	\$167K	\$235K
Med Sales Price as a % of Med Est Value	137%	107%	148%	129%	111%	106%	92%	95%	116%	111%	101%	106%	118%