

Summary of Key Listing and Sales Metrics

A summary of the key metrics selected to be included in the report. MLS sources where licensed.

Key Metrics	Feb 2019	Feb 2018	+ / -	YTD 2019	YTD 2018	+ / -
Listing Activity Charts Metrics						
New Listing Count	29	37	-21.6%	53	69	-23.2%
New Listing Volume	\$9,492,900	\$11,196,500	-15.2%	\$19,573,200	\$18,750,200	+4.4%
Active Listing Count	236	272	-13.2%	N/A	N/A	
Active Listing Volume	\$101,827,749	\$93,239,095	+9.2%	N/A	N/A	
Average Listing Price	\$431,474	\$342,791	+25.9%	\$430,957	\$340,687	+26.5%
Median Listing Price	\$297,000	\$233,250	+27.3%	\$297,978	\$233,867	+27.4%
Median Days in RPR	160.5	180.5	-11.1%	160.29	180.3	-11.1%
Months of Inventory	18.2	20.9	-13.2%	14	20.7	-32.2%
Absorption Rate	5.51%	4.78%	+0.7%	7.14%	4.84%	+2.3%
Sales Activity Charts Metrics						
New Pending Sales Count	14	19	-26.3%	39	46	-15.2%
New Pending Sales Volume	\$3,948,899	\$5,520,800	-28.5%	\$9,983,798	\$12,108,000	-17.5%
Pending Sales Count	34	27	+25.9%	N/A	N/A	
Pending Sales Volume	\$8,076,398	\$8,314,800	-2.9%	N/A	N/A	
Closed Sales Count	18	20	-10%	31	33	-6.1%
Closed Sales Volume	\$4,385,125	\$4,292,500	+2.2%	\$6,724,625	\$6,449,400	+4.3%
Average Sales Price	\$243,618	\$214,625	+13.5%	\$216,923	\$195,436	+11%
Median Sales Price	\$186,500	\$186,500	±	\$196,355	\$177,597	+10.6%

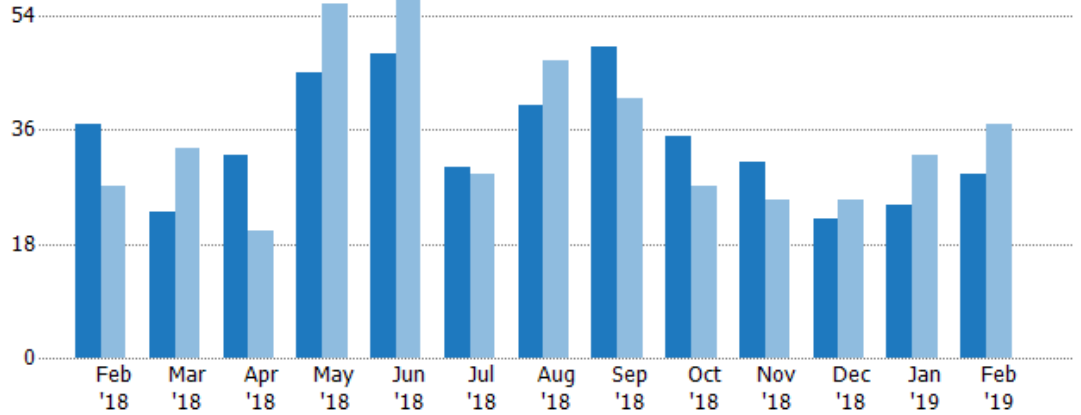
New Listings

The number of new residential listings that were added each month.

Filters Used

ZIP: East Dover, VT 05341, South Newfane, VT 05351, Wardsboro, VT 05355, West Dover, VT 05356, Wilmington, VT 05363
 Property Type: Condo/Townhouse/Apt, Single Family Residence

Month/Year	Count	% Chg.
Feb '19	29	-21.6%
Feb '18	37	37%
Feb '17	27	25.9%



Current Year	37	23	32	45	48	30	40	49	35	31	22	24	29
Prior Year	27	33	20	56	62	29	47	41	27	25	25	32	37
Percent Change from Prior Year	37%	-30%	60%	-20%	-23%	3%	-15%	20%	30%	24%	-12%	-25%	-22%

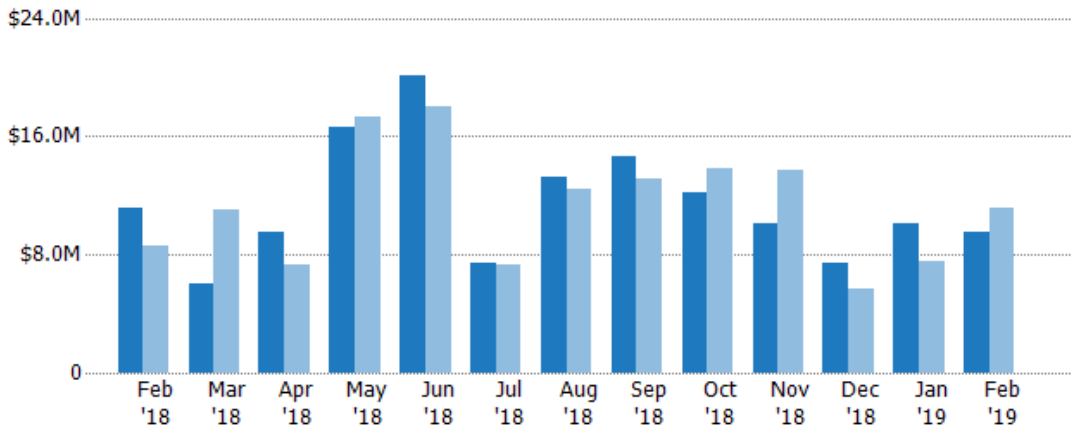
New Listing Volume

The sum of the listing price of residential listings that were added each month.

Filters Used

ZIP: East Dover, VT 05341, South Newfane, VT 05351, Wardsboro, VT 05355, West Dover, VT 05356, Wilmington, VT 05363
 Property Type: Condo/Townhouse/Apt, Single Family Residence

Month/Year	Volume	% Chg.
Feb '19	\$9.49M	-15.2%
Feb '18	\$11.2M	30.4%
Feb '17	\$8.59M	25.8%



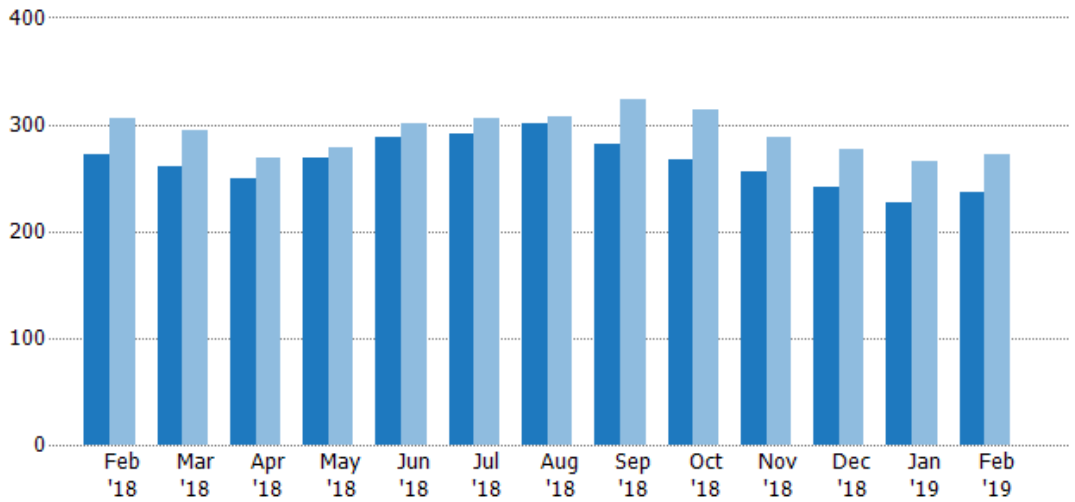
Current Year	\$11.2M	\$6.04M	\$9.57M	\$16.6M	\$20.1M	\$7.41M	\$13.2M	\$14.6M	\$12.2M	\$10.1M	\$7.47M	\$10.1M	\$9.49M
Prior Year	\$8.59M	\$11.1M	\$7.36M	\$17.3M	\$18M	\$7.31M	\$12.4M	\$13.1M	\$13.9M	\$13.7M	\$5.63M	\$7.55M	\$11.2M
Percent Change from Prior Year	30%	-45%	30%	-4%	12%	1%	7%	12%	-12%	-26%	33%	33%	-15%

Active Listings

The number of active residential listings at the end of each month.

Filters Used

ZIP: East Dover, VT 05341, South Newfane, VT 05351, Wardsboro, VT 05355, West Dover, VT 05356, Wilmington, VT 05363
 Property Type: Condo/Townhouse/Apt, Single Family Residence



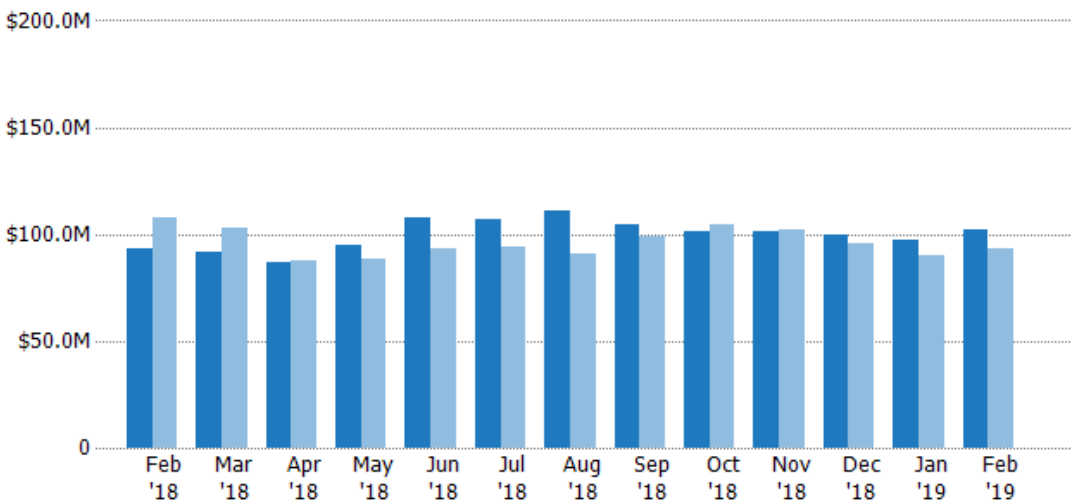
	Feb '18	Mar '18	Apr '18	May '18	Jun '18	Jul '18	Aug '18	Sep '18	Oct '18	Nov '18	Dec '18	Jan '19	Feb '19
Current Year	272	261	250	268	288	291	301	282	267	256	241	226	236
Prior Year	305	294	268	279	301	306	308	324	314	288	276	265	272
Percent Change from Prior Year	-11%	-11%	-7%	-4%	-4%	-5%	-2%	-13%	-15%	-11%	-13%	-15%	-13%

Active Listing Volume

The sum of the listing price of active residential listings at the end of each month.

Filters Used

ZIP: East Dover, VT 05341, South Newfane, VT 05351, Wardsboro, VT 05355, West Dover, VT 05356, Wilmington, VT 05363
 Property Type: Condo/Townhouse/Apt, Single Family Residence



	Feb '18	Mar '18	Apr '18	May '18	Jun '18	Jul '18	Aug '18	Sep '18	Oct '18	Nov '18	Dec '18	Jan '19	Feb '19
Current Year	\$93.2M	\$91.3M	\$86.7M	\$94.8M	\$108M	\$107M	\$111M	\$105M	\$101M	\$101M	\$100M	\$97.3M	\$102M
Prior Year	\$107M	\$103M	\$87.7M	\$88.1M	\$93M	\$93.8M	\$91M	\$98.5M	\$105M	\$102M	\$95.6M	\$89.7M	\$93.2M
Percent Change from Prior Year	-13%	-11%	-1%	8%	16%	14%	22%	6%	-3%	0%	4%	8%	9%

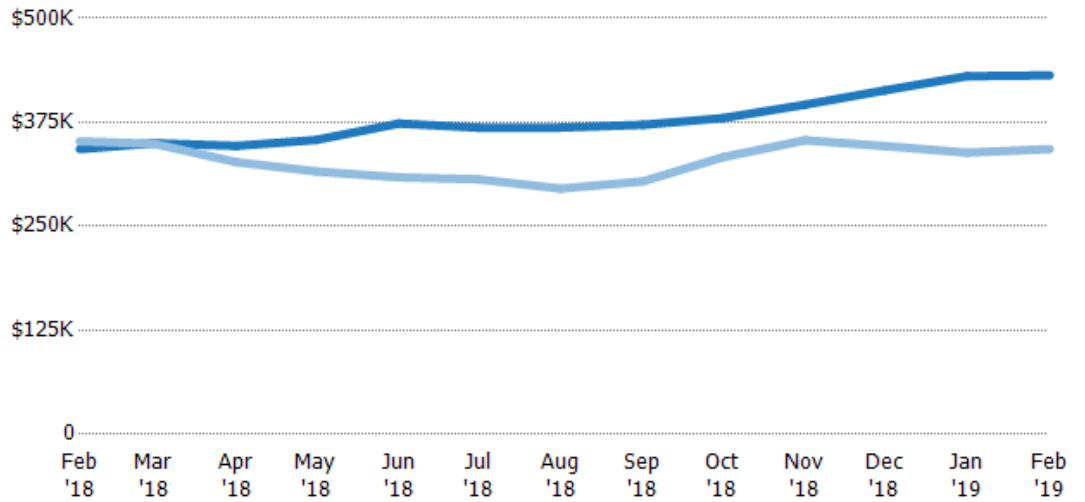
Average Listing Price

The average listing price of active residential listings at the end of each month.

Filters Used

ZIP: East Dover, VT 05341, South Newfane, VT 05351, Wardsboro, VT 05355, West Dover, VT 05356, Wilmington, VT 05363
 Property Type: Condo/Townhouse/Apt, Single Family Residence

Month/Year	Price	% Chg.
Feb '19	\$431K	25.9%
Feb '18	\$343K	-2.7%
Feb '17	\$352K	-17.7%



Current Year	\$343K	\$350K	\$347K	\$354K	\$373K	\$368K	\$369K	\$372K	\$380K	\$396K	\$413K	\$430K	\$431K
Prior Year	\$352K	\$349K	\$327K	\$316K	\$309K	\$306K	\$295K	\$304K	\$333K	\$353K	\$346K	\$339K	\$343K
Percent Change from Prior Year	-3%	0%	6%	12%	21%	20%	25%	22%	14%	12%	19%	27%	26%

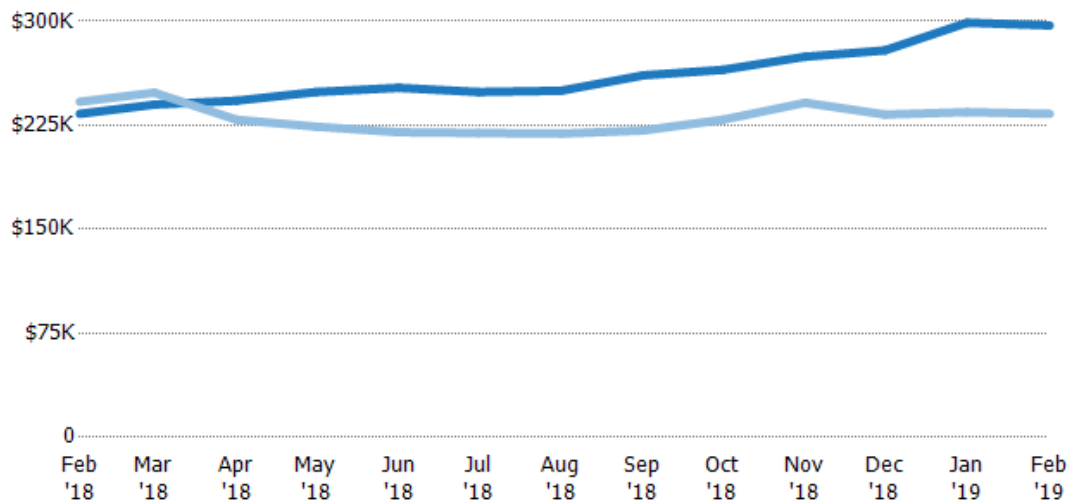
Median Listing Price

The median listing price of active residential listings at the end of each month.

Filters Used

ZIP: East Dover, VT 05341, South Newfane, VT 05351, Wardsboro, VT 05355, West Dover, VT 05356, Wilmington, VT 05363
 Property Type: Condo/Townhouse/Apt, Single Family Residence

Month/Year	Price	% Chg.
Feb '19	\$297K	27.3%
Feb '18	\$233K	-3.6%
Feb '17	\$242K	-9.5%



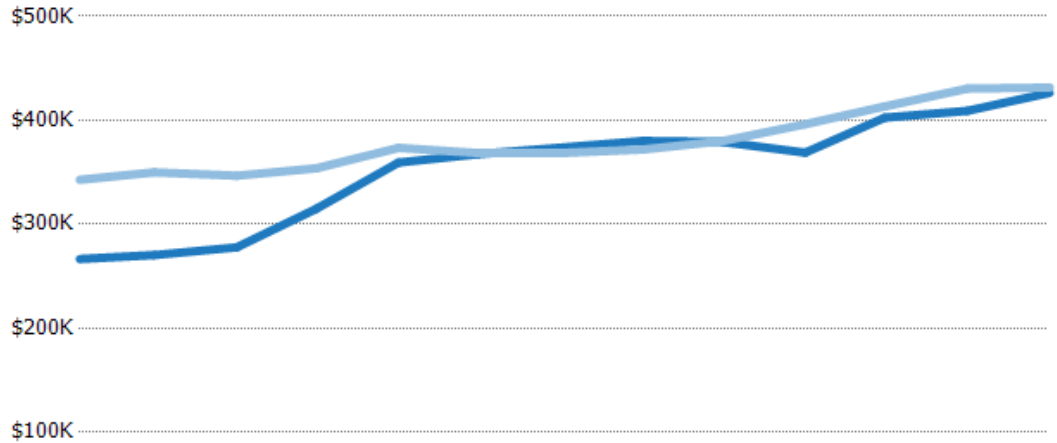
Current Year	\$233K	\$240K	\$243K	\$249K	\$252K	\$249K	\$250K	\$261K	\$265K	\$274K	\$279K	\$299K	\$297K
Prior Year	\$242K	\$249K	\$229K	\$224K	\$220K	\$219K	\$219K	\$221K	\$229K	\$241K	\$233K	\$235K	\$233K
Percent Change from Prior Year	-4%	-3%	6%	11%	15%	13%	14%	18%	16%	14%	20%	28%	27%

Average Listing Price vs Average Est Value

The average listing price as a percentage of the average AVM or RVM® valuation estimate for active listings each month.

Filters Used

ZIP: East Dover, VT 05341, South Newfane, VT 05351, Wardsboro, VT 05355, West Dover, VT 05356, Wilmington, VT 05363
 Property Type: Condo/Townhouse/Apt, Single Family Residence



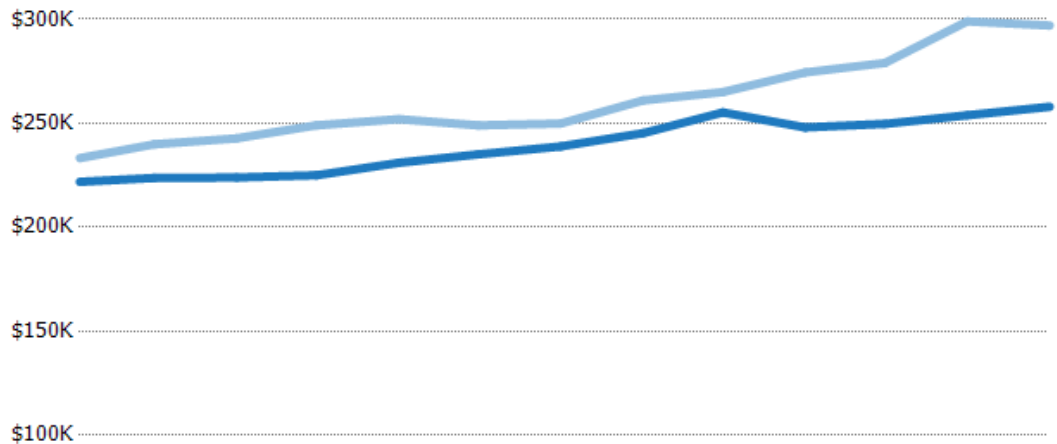
	Feb '18	Mar '18	Apr '18	May '18	Jun '18	Jul '18	Aug '18	Sep '18	Oct '18	Nov '18	Dec '18	Jan '19	Feb '19
Avg Est Value	\$267K	\$270K	\$278K	\$315K	\$359K	\$367K	\$374K	\$380K	\$379K	\$369K	\$403K	\$409K	\$426K
Avg Listing Price	\$343K	\$350K	\$347K	\$354K	\$373K	\$368K	\$369K	\$372K	\$380K	\$396K	\$413K	\$430K	\$431K
Avg Listing Price as a % of Avg Est Value	129%	129%	125%	112%	104%	100%	99%	98%	100%	107%	103%	105%	101%

Median Listing Price vs Median Est Value

The median listing price as a percentage of the median AVM or RVM® valuation estimate for active listings each month.

Filters Used

ZIP: East Dover, VT 05341, South Newfane, VT 05351, Wardsboro, VT 05355, West Dover, VT 05356, Wilmington, VT 05363
 Property Type: Condo/Townhouse/Apt, Single Family Residence



	Feb '18	Mar '18	Apr '18	May '18	Jun '18	Jul '18	Aug '18	Sep '18	Oct '18	Nov '18	Dec '18	Jan '19	Feb '19
Median Est Value	\$222K	\$224K	\$224K	\$225K	\$231K	\$235K	\$239K	\$245K	\$255K	\$248K	\$250K	\$254K	\$258K
Median Listing Price	\$233K	\$240K	\$243K	\$249K	\$252K	\$249K	\$250K	\$261K	\$265K	\$274K	\$279K	\$299K	\$297K
Med Listing Price as a % of Med Est Value	105%	107%	108%	111%	109%	106%	105%	106%	104%	111%	112%	118%	115%

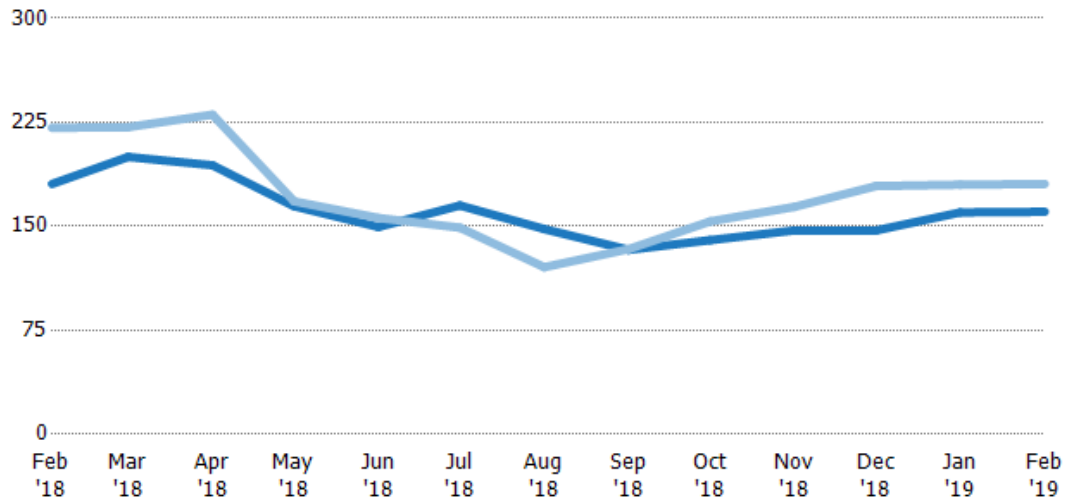
Median Days in RPR

The median number of days between when residential properties are first displayed as active listings in RPR and when accepted offers have been noted in RPR.

Filters Used

ZIP: East Dover, VT 05341, South Newfane, VT 05351, Wardsboro, VT 05355, West Dover, VT 05356, Wilmington, VT 05363
 Property Type: Condo/Townhouse/Apt, Single Family Residence

Month/Year	Days	% Chg.
Feb '19	161	-11.1%
Feb '18	181	-18.3%
Feb '17	221	-19.5%



	Feb '18	Mar '18	Apr '18	May '18	Jun '18	Jul '18	Aug '18	Sep '18	Oct '18	Nov '18	Dec '18	Jan '19	Feb '19
Current Year	181	200	194	165	150	165	148	133	140	147	147	160	161
Prior Year	221	222	231	168	156	149	121	134	154	164	179	180	181
Percent Change from Prior Year	-18%	-10%	-16%	-2%	-4%	11%	23%	0%	-9%	-10%	-18%	-11%	-11%

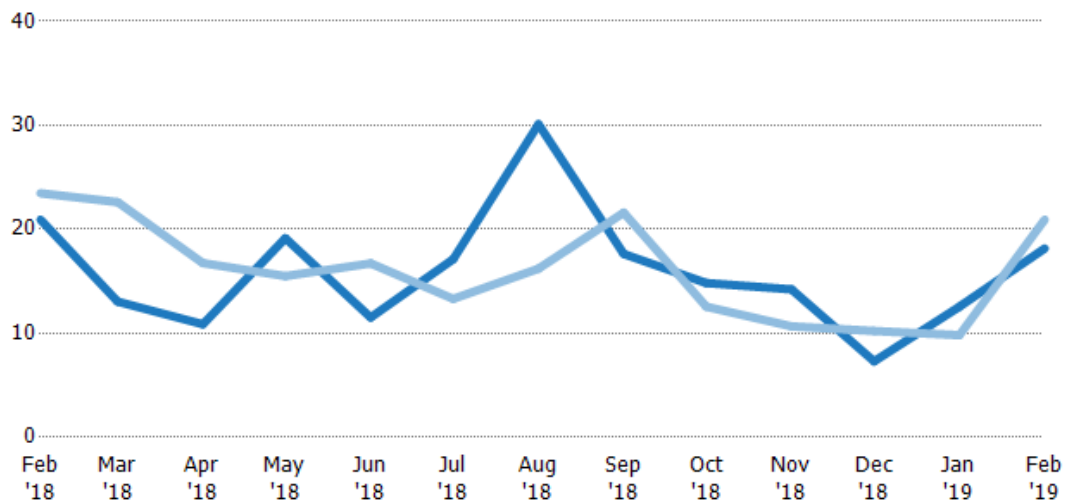
Months of Inventory

The number of months it would take to exhaust active listings at the current sales rate.

Filters Used

ZIP: East Dover, VT 05341, South Newfane, VT 05351, Wardsboro, VT 05355, West Dover, VT 05356, Wilmington, VT 05363
 Property Type: Condo/Townhouse/Apt, Single Family Residence

Month/Year	Months	% Chg.
Feb '19	18.2	-13.2%
Feb '18	20.9	-10.8%
Feb '17	23.5	3.4%



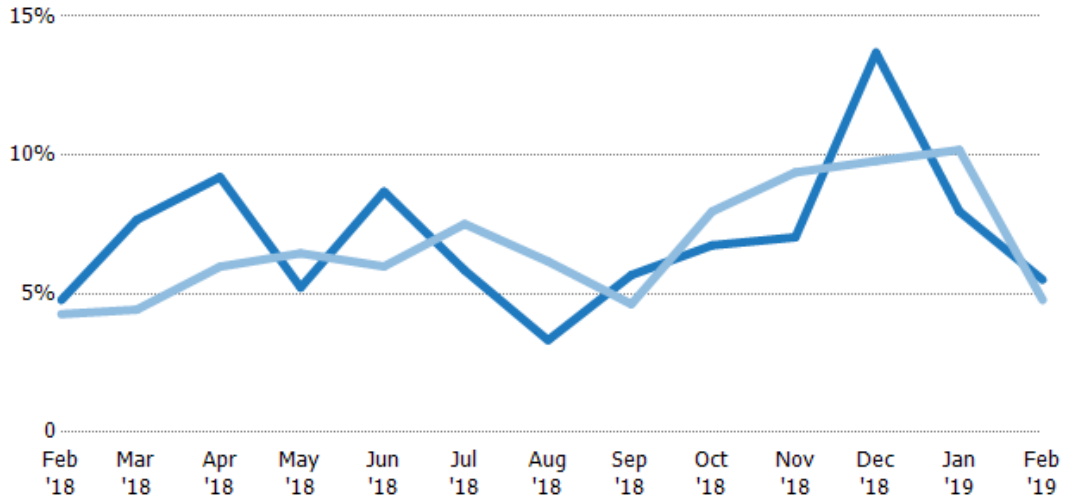
	Feb '18	Mar '18	Apr '18	May '18	Jun '18	Jul '18	Aug '18	Sep '18	Oct '18	Nov '18	Dec '18	Jan '19	Feb '19
Current Year	20.9	13.1	10.9	19.1	11.5	17.1	30.1	17.6	14.8	14.2	7.3	12.6	18.2
Prior Year	23.5	22.6	16.8	15.5	16.7	13.3	16.2	21.6	12.6	10.7	10.2	9.81	20.9
Percent Change from Prior Year	-11%	-42%	-35%	24%	-31%	29%	86%	-18%	18%	33%	-29%	28%	-13%

Absorption Rate

The percentage of inventory sold per month.

Filters Used

ZIP: East Dover, VT 05341, South Newfane, VT 05351, Wardsboro, VT 05355, West Dover, VT 05356, Wilmington, VT 05363
 Property Type: Condo/Townhouse/Apt, Single Family Residence



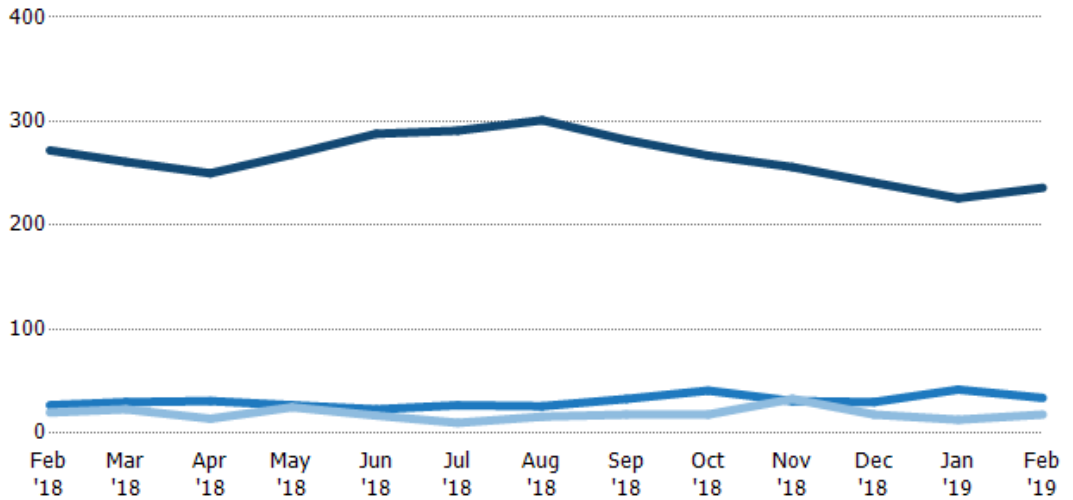
	Feb '18	Mar '18	Apr '18	May '18	Jun '18	Jul '18	Aug '18	Sep '18	Oct '18	Nov '18	Dec '18	Jan '19	Feb '19
Current Year	5%	8%	9%	5%	9%	6%	3%	6%	7%	7%	14%	8%	6%
Prior Year	4%	4%	6%	6%	6%	8%	6%	5%	8%	9%	10%	10%	5%
Change from Prior Year	-1%	-3%	-3%	1%	-3%	2%	3%	-1%	1%	2%	-4%	2%	-1%

Active/Pending/Sold Units

The number of residential properties that were Active, Pending and Sold each month.

Filters Used

ZIP: East Dover, VT 05341, South Newfane, VT 05351, Wardsboro, VT 05355, West Dover, VT 05356, Wilmington, VT 05363
 Property Type: Condo/Townhouse/Apt, Single Family Residence



	Feb '18	Mar '18	Apr '18	May '18	Jun '18	Jul '18	Aug '18	Sep '18	Oct '18	Nov '18	Dec '18	Jan '19	Feb '19
Active	272	261	250	268	288	291	301	282	267	256	241	226	236
Pending	27	30	31	27	23	27	26	33	41	31	30	42	34
Sold	20	23	14	25	17	10	16	18	18	33	18	13	18

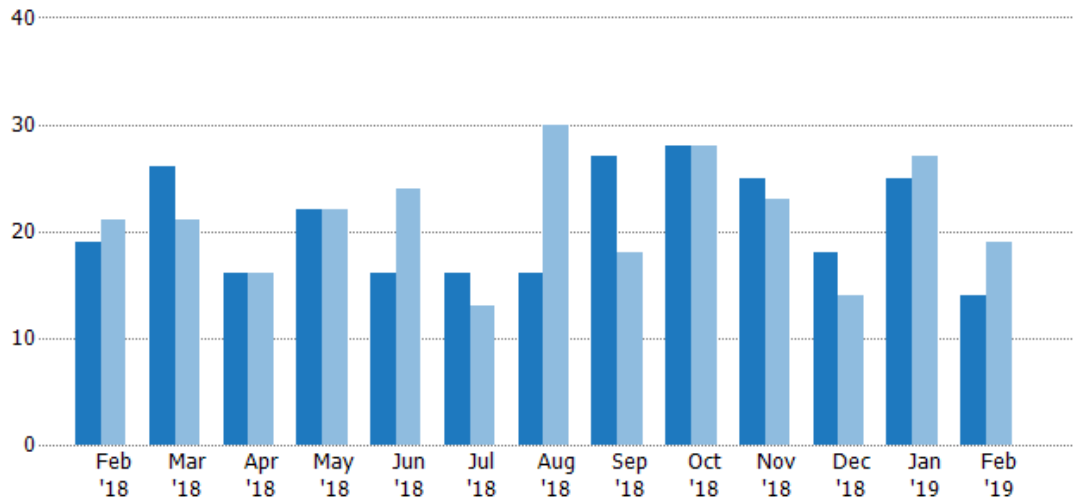
New Pending Sales

The number of residential properties with accepted offers that were added each month.

Filters Used

ZIP: East Dover, VT 05341, South Newfane, VT 05351, Wardsboro, VT 05355, West Dover, VT 05356, Wilmington, VT 05363
 Property Type: Condo/Townhouse/Apt, Single Family Residence

Month/Year	Count	% Chg.
Feb '19	14	-26.3%
Feb '18	19	-9.5%
Feb '17	21	-14.3%



Current Year	19	26	16	22	16	16	16	27	28	25	18	25	14
Prior Year	21	21	16	22	24	13	30	18	28	23	14	27	19
Percent Change from Prior Year	-10%	24%	0%	0%	-33%	23%	-47%	50%	0%	9%	29%	-7%	-26%

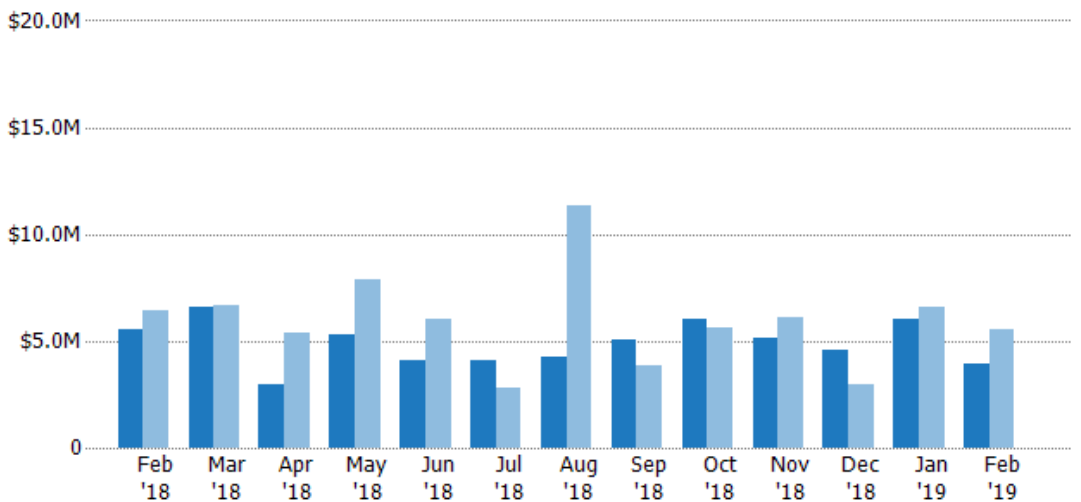
New Pending Sales Volume

The sum of the sales price of residential properties with accepted offers that were added each month.

Filters Used

ZIP: East Dover, VT 05341, South Newfane, VT 05351, Wardsboro, VT 05355, West Dover, VT 05356, Wilmington, VT 05363
 Property Type: Condo/Townhouse/Apt, Single Family Residence

Month/Year	Volume	% Chg.
Feb '19	\$3.95M	-28.5%
Feb '18	\$5.52M	-13.8%
Feb '17	\$6.41M	-29.8%



Current Year	\$5.52M	\$6.55M	\$2.98M	\$5.3M	\$4.09M	\$4.13M	\$4.23M	\$5.04M	\$6M	\$5.12M	\$4.59M	\$6.03M	\$3.95M
Prior Year	\$6.41M	\$6.65M	\$5.36M	\$7.9M	\$5.99M	\$2.78M	\$11.4M	\$3.83M	\$5.62M	\$6.08M	\$2.95M	\$6.59M	\$5.52M
Percent Change from Prior Year	-14%	-2%	-44%	-33%	-32%	48%	-63%	32%	7%	-16%	56%	-8%	-28%

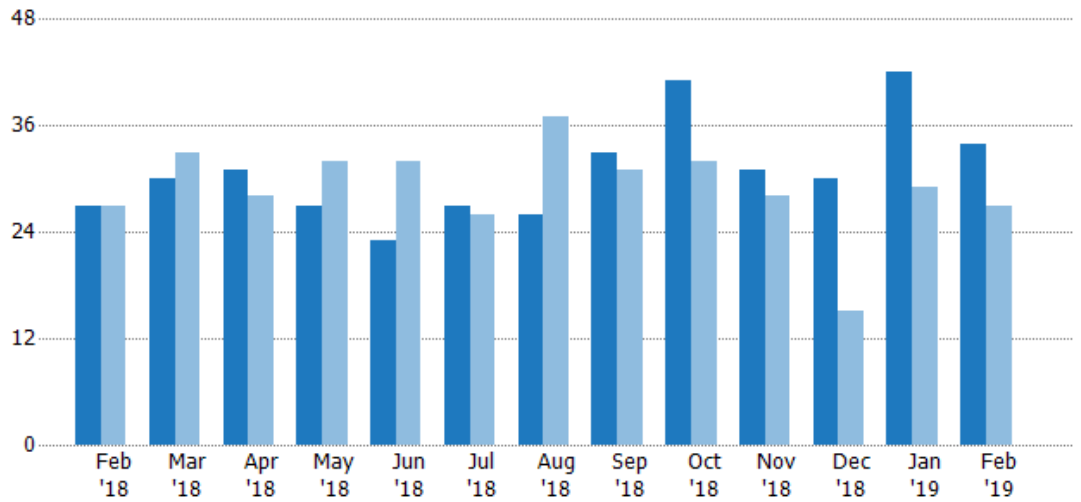
Pending Sales

The number of residential properties with accepted offers that were available at the end each month.

Filters Used

ZIP: East Dover, VT 05341, South Newfane, VT 05351, Wardsboro, VT 05355, West Dover, VT 05356, Wilmington, VT 05363
 Property Type: Condo/Townhouse/Apt, Single Family Residence

Month/Year	Count	% Chg.
Feb '19	34	25.9%
Feb '18	27	0%
Feb '17	27	29.6%



Current Year	27	30	31	27	23	27	26	33	41	31	30	42	34
Prior Year	27	33	28	32	32	26	37	31	32	28	15	29	27
Percent Change from Prior Year	0%	-9%	11%	-16%	-28%	4%	-30%	6%	28%	11%	100%	45%	26%

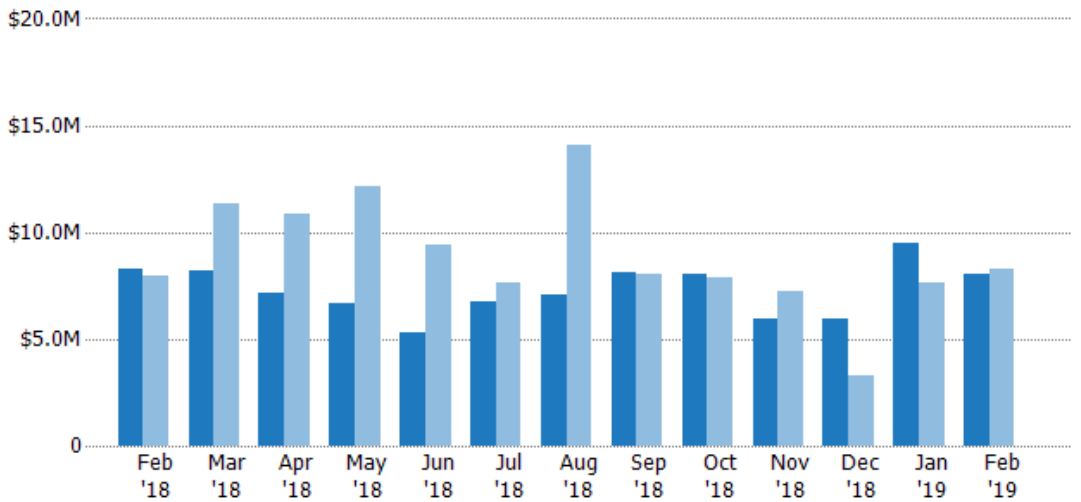
Pending Sales Volume

The sum of the sales price of residential properties with accepted offers that were available at the end of each month.

Filters Used

ZIP: East Dover, VT 05341, South Newfane, VT 05351, Wardsboro, VT 05355, West Dover, VT 05356, Wilmington, VT 05363
 Property Type: Condo/Townhouse/Apt, Single Family Residence

Month/Year	Volume	% Chg.
Feb '19	\$8.08M	-2.9%
Feb '18	\$8.31M	4.3%
Feb '17	\$7.97M	13.5%



Current Year	\$8.31M	\$8.19M	\$7.14M	\$6.63M	\$5.32M	\$6.76M	\$7.06M	\$8.08M	\$8.01M	\$5.96M	\$5.94M	\$9.49M	\$8.08M
Prior Year	\$7.97M	\$11.3M	\$10.8M	\$12.2M	\$9.44M	\$7.67M	\$14M	\$8.05M	\$7.87M	\$7.23M	\$3.31M	\$7.6M	\$8.31M
Percent Change from Prior Year	4%	-28%	-34%	-45%	-44%	-12%	-50%	0%	2%	-17%	79%	25%	-3%

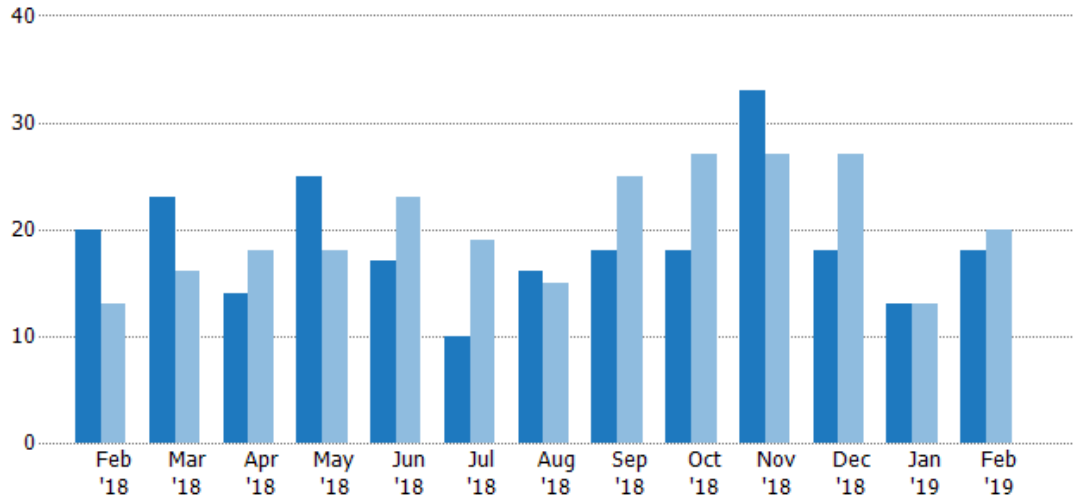
Closed Sales

The total number of residential properties sold each month.

Filters Used

ZIP: East Dover, VT 05341, South Newfane, VT 05351, Wardsboro, VT 05355, West Dover, VT 05356, Wilmington, VT 05363
 Property Type: Condo/Townhouse/Apt, Single Family Residence

Month/Year	Count	% Chg.
Feb '19	18	-10%
Feb '18	20	53.8%
Feb '17	13	7.7%



Current Year	20	23	14	25	17	10	16	18	18	33	18	13	18
Prior Year	13	16	18	18	23	19	15	25	27	27	27	13	20
Percent Change from Prior Year	54%	44%	-22%	39%	-26%	-47%	7%	-28%	-33%	22%	-33%	0%	-10%

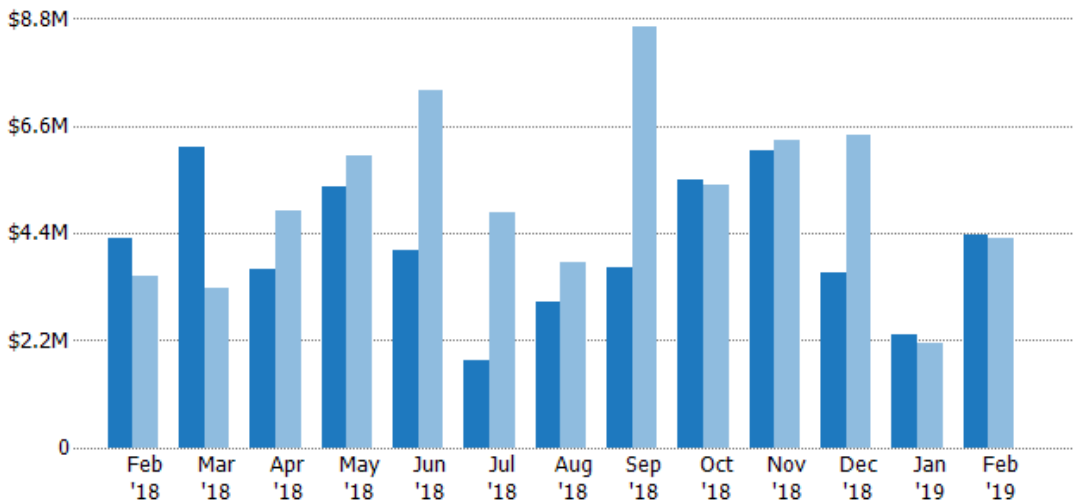
Closed Sales Volume

The sum of the sales price of residential properties sold each month.

Filters Used

ZIP: East Dover, VT 05341, South Newfane, VT 05351, Wardsboro, VT 05355, West Dover, VT 05356, Wilmington, VT 05363
 Property Type: Condo/Townhouse/Apt, Single Family Residence

Month/Year	Volume	% Chg.
Feb '19	\$4.39M	2.2%
Feb '18	\$4.29M	22.4%
Feb '17	\$3.51M	14.5%



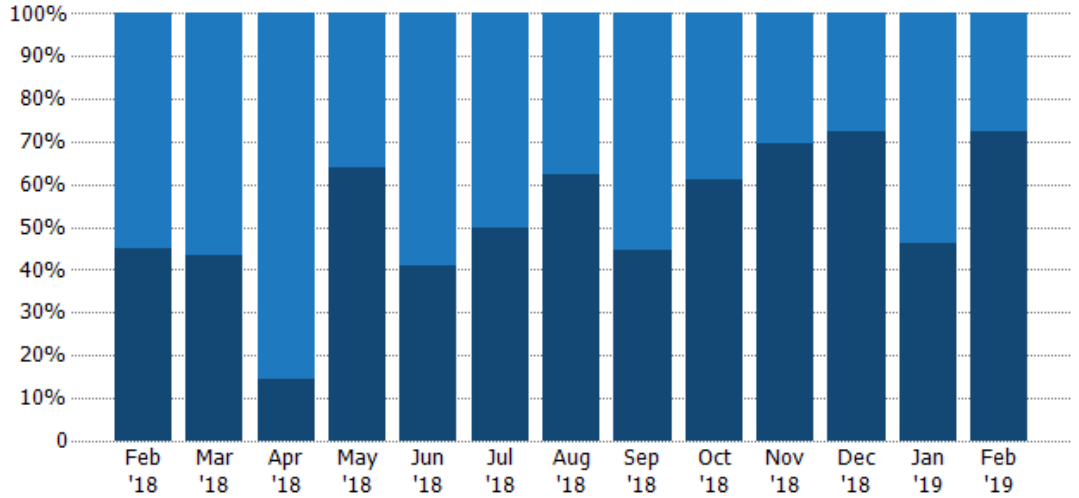
Current Year	\$4.29M	\$6.16M	\$3.68M	\$5.37M	\$4.06M	\$1.79M	\$2.98M	\$3.7M	\$5.51M	\$6.09M	\$3.59M	\$2.34M	\$4.39M
Prior Year	\$3.51M	\$3.28M	\$4.85M	\$6.01M	\$7.33M	\$4.84M	\$3.81M	\$8.65M	\$5.39M	\$6.3M	\$6.42M	\$2.16M	\$4.29M
Percent Change from Prior Year	22%	88%	-24%	-11%	-45%	-63%	-22%	-57%	2%	-3%	-44%	8%	2%

Closed Sales by Property Type

The percentage of residential properties sold each month by property type.

Filters Used

ZIP: East Dover, VT 05341, South Newfane, VT 05351, Wardsboro, VT 05355, West Dover, VT 05356, Wilmington, VT 05363
 Property Type: Condo/Townhouse/Apt, Single Family Residence



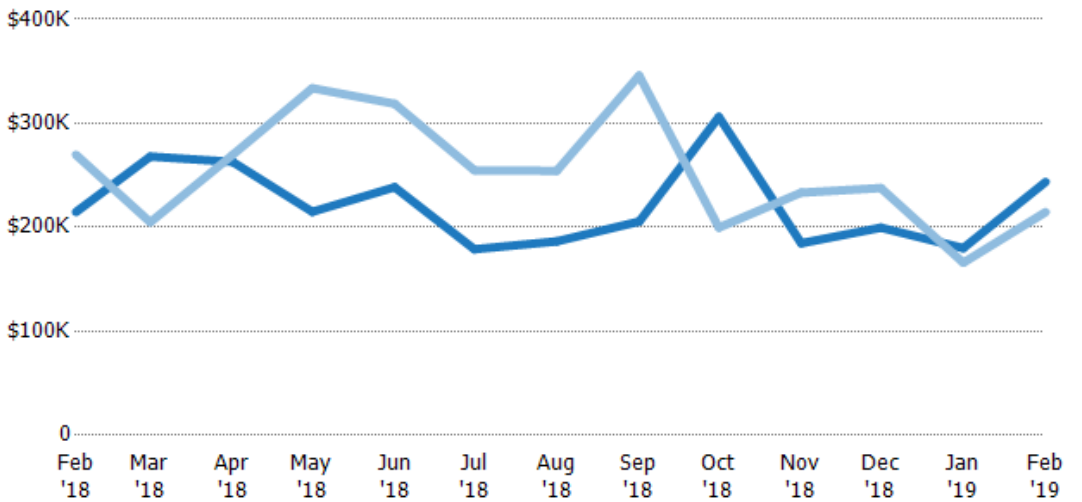
Condo/Townhouse	55%	57%	86%	36%	59%	50%	38%	56%	39%	30%	28%	54%	28%
Single Family Residence	45%	43%	14%	64%	41%	50%	63%	44%	61%	70%	72%	46%	72%

Average Sales Price

The average sales price of the residential properties sold each month.

Filters Used

ZIP: East Dover, VT 05341, South Newfane, VT 05351, Wardsboro, VT 05355, West Dover, VT 05356, Wilmington, VT 05363
 Property Type: Condo/Townhouse/Apt, Single Family Residence



Month/Year	Price	% Chg.
Feb '19	\$244K	13.5%
Feb '18	\$215K	-20.4%
Feb '17	\$270K	6.4%

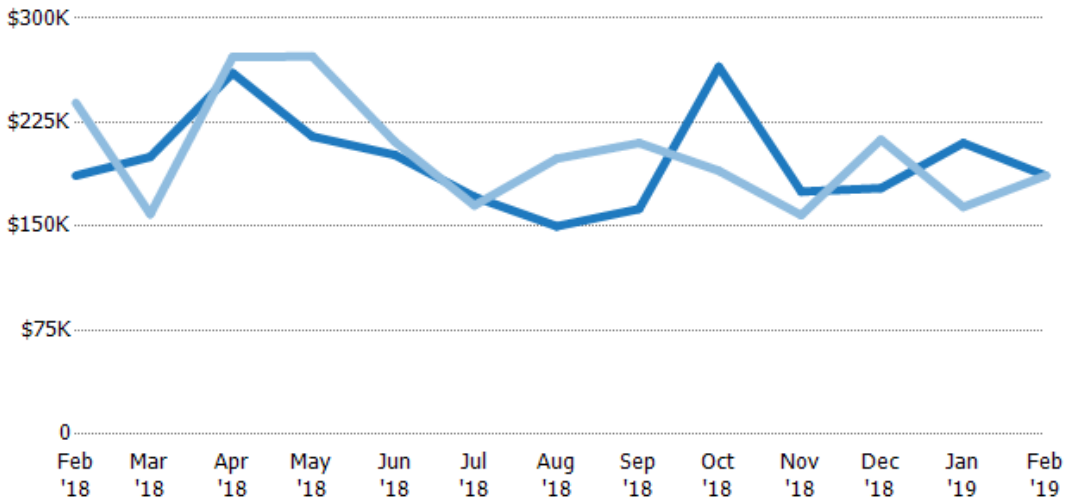
Current Year	\$215K	\$268K	\$263K	\$215K	\$239K	\$179K	\$186K	\$205K	\$306K	\$185K	\$200K	\$180K	\$244K
Prior Year	\$270K	\$205K	\$270K	\$334K	\$319K	\$255K	\$254K	\$346K	\$200K	\$233K	\$238K	\$166K	\$215K
Percent Change from Prior Year	-20%	31%	-2%	-36%	-25%	-30%	-27%	-41%	53%	-21%	-16%	8%	14%

Median Sales Price

The median sales price of the residential properties sold each month.

Filters Used

ZIP: East Dover, VT 05341, South Newfane, VT 05351, Wardsboro, VT 05355, West Dover, VT 05356, Wilmington, VT 05363
 Property Type: Condo/Townhouse/Apt, Single Family Residence



Month/Year	Price	% Chg.
Feb '19	\$187K	0%
Feb '18	\$187K	-22%
Feb '17	\$239K	-0.1%

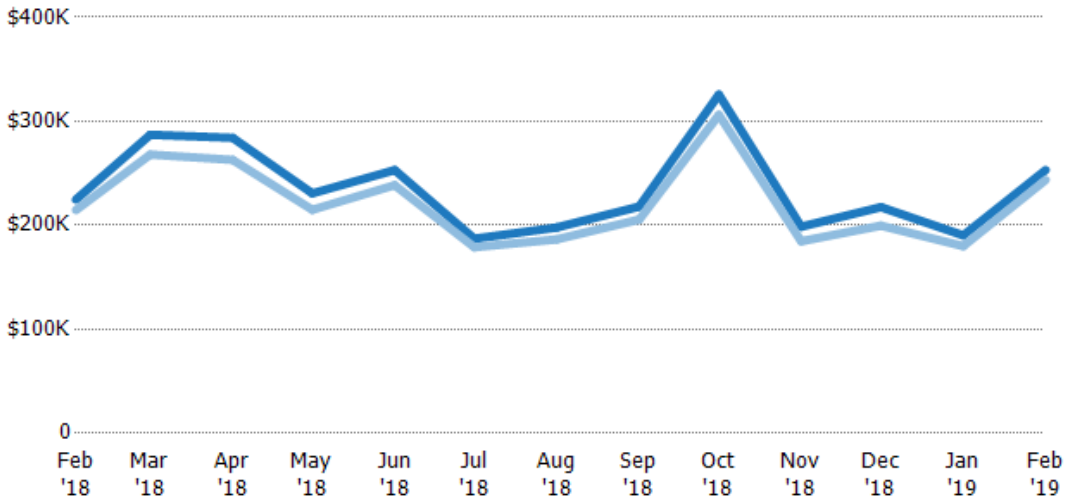
	Feb '18	Mar '18	Apr '18	May '18	Jun '18	Jul '18	Aug '18	Sep '18	Oct '18	Nov '18	Dec '18	Jan '19	Feb '19
Current Year	\$187K	\$200K	\$261K	\$215K	\$202K	\$171K	\$150K	\$163K	\$265K	\$175K	\$177K	\$210K	\$187K
Prior Year	\$239K	\$159K	\$272K	\$273K	\$211K	\$165K	\$199K	\$210K	\$190K	\$158K	\$213K	\$164K	\$187K
Percent Change from Prior Year	-22%	26%	-4%	-21%	-5%	4%	-25%	-23%	39%	11%	-16%	28%	0%

Average Sales Price vs Average Listing Price

The average sales price as a percentage of the average listing price for properties sold each month.

Filters Used

ZIP: East Dover, VT 05341, South Newfane, VT 05351, Wardsboro, VT 05355, West Dover, VT 05356, Wilmington, VT 05363
 Property Type: Condo/Townhouse/Apt, Single Family Residence



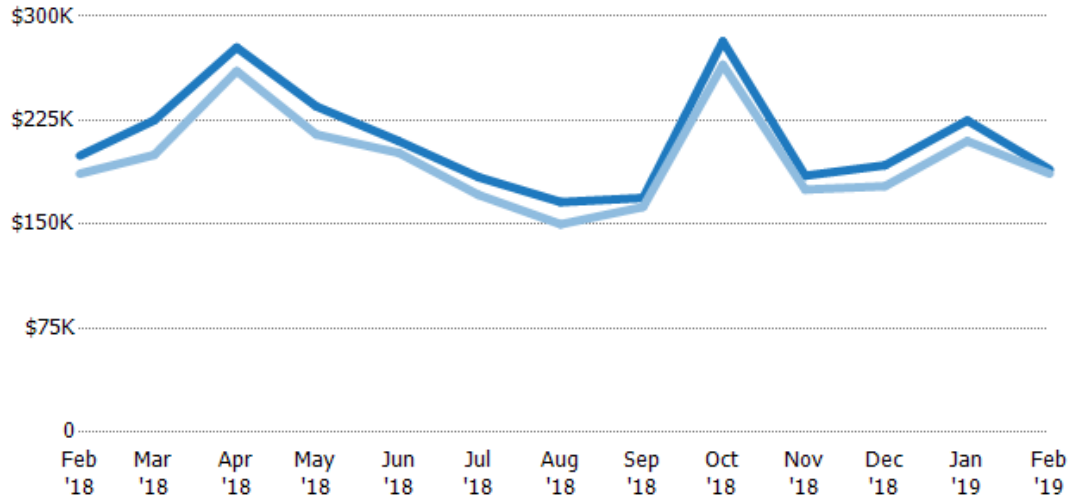
	Feb '18	Mar '18	Apr '18	May '18	Jun '18	Jul '18	Aug '18	Sep '18	Oct '18	Nov '18	Dec '18	Jan '19	Feb '19
Avg List Price	\$225K	\$287K	\$284K	\$231K	\$253K	\$187K	\$198K	\$218K	\$326K	\$199K	\$217K	\$190K	\$253K
Avg Sales Price	\$215K	\$268K	\$263K	\$215K	\$239K	\$179K	\$186K	\$205K	\$306K	\$185K	\$200K	\$180K	\$244K
Avg Sales Price as a % of Avg List Price	96%	93%	93%	93%	94%	96%	94%	94%	94%	93%	92%	95%	96%

Median Sales Price vs Median Listing Price

The median sales price as a percentage of the median listing price for properties sold each month.

Filters Used

ZIP: East Dover, VT 05341, South Newfane, VT 05351, Wardsboro, VT 05355, West Dover, VT 05356, Wilmington, VT 05363
 Property Type: Condo/Townhouse/Apt, Single Family Residence



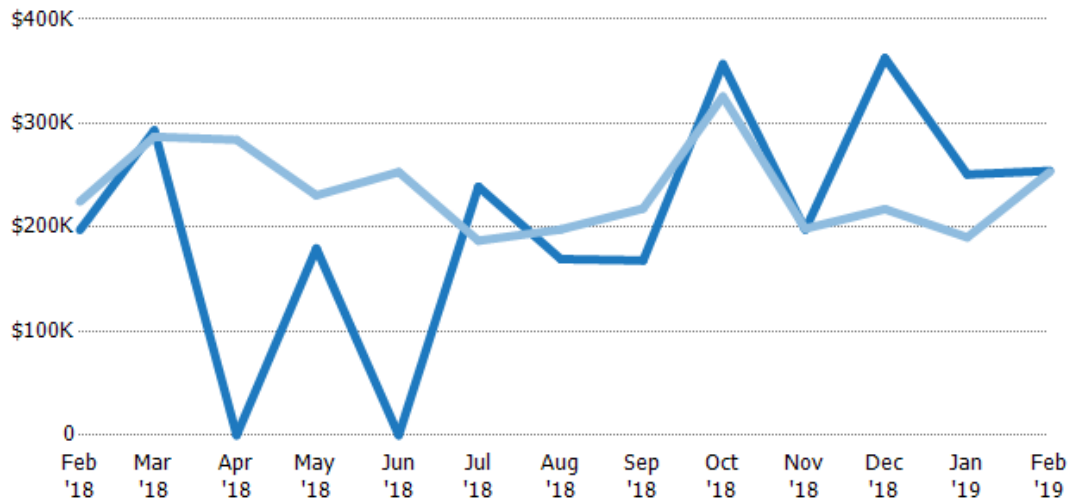
	Feb '18	Mar '18	Apr '18	May '18	Jun '18	Jul '18	Aug '18	Sep '18	Oct '18	Nov '18	Dec '18	Jan '19	Feb '19
Median List Price	\$199K	\$225K	\$278K	\$235K	\$210K	\$184K	\$166K	\$169K	\$282K	\$185K	\$193K	\$225K	\$190K
Median Sales Price	\$187K	\$200K	\$261K	\$215K	\$202K	\$171K	\$150K	\$163K	\$265K	\$175K	\$177K	\$210K	\$187K
Med Sales Price as a % of Med List Price	94%	89%	94%	91%	96%	93%	90%	96%	94%	95%	92%	93%	98%

Average Sales Price vs Average Est Value

The average sales price as a percentage of the average AVM or RVM® valuation estimate for properties sold each month.

Filters Used

ZIP: East Dover, VT 05341, South Newfane, VT 05351, Wardsboro, VT 05355, West Dover, VT 05356, Wilmington, VT 05363
 Property Type: Condo/Townhouse/Apt, Single Family Residence



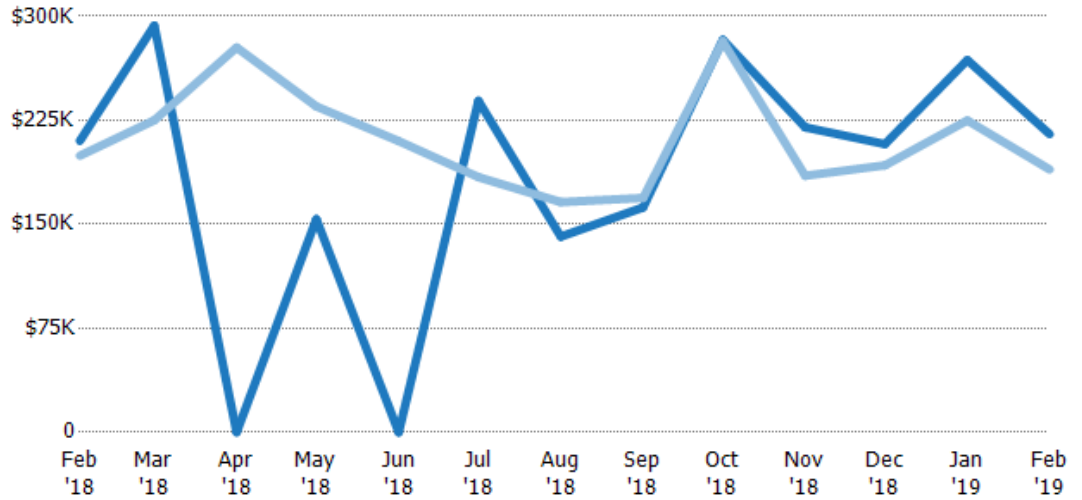
	Feb '18	Mar '18	Apr '18	May '18	Jun '18	Jul '18	Aug '18	Sep '18	Oct '18	Nov '18	Dec '18	Jan '19	Feb '19
Avg Est Value	\$197K	\$293K	\$0	\$180K	\$0	\$239K	\$169K	\$168K	\$357K	\$198K	\$363K	\$251K	\$254K
Avg Sales Price	\$225K	\$287K	\$284K	\$231K	\$253K	\$187K	\$198K	\$218K	\$326K	\$199K	\$217K	\$190K	\$253K
Avg Sales Price as a % of Avg Est Value	114%	98%	100%	128%	100%	78%	117%	130%	91%	100%	60%	76%	100%

Median Sales Price vs Median Est Value

The median sales price as a percent of the median AVM or RVM® valuation estimate for properties sold each month.

Filters Used

ZIP: East Dover, VT 05341, South Newfane, VT 05351, Wardsboro, VT 05355, West Dover, VT 05356, Wilmington, VT 05363
 Property Type: Condo/Townhouse/Apt, Single Family Residence



Median Est Value	\$210K	\$293K	\$0	\$154K	\$0	\$239K	\$141K	\$162K	\$283K	\$220K	\$208K	\$268K	\$215K
Median Sales Price	\$199K	\$225K	\$278K	\$235K	\$210K	\$184K	\$166K	\$169K	\$282K	\$185K	\$193K	\$225K	\$190K
Med Sales Price as a % of Med Est Value	95%	77%	100%	153%	100%	77%	118%	104%	100%	84%	93%	84%	88%