

Summary of Key Listing and Sales Metrics

A summary of the key metrics selected to be included in the report. MLS sources where licensed.

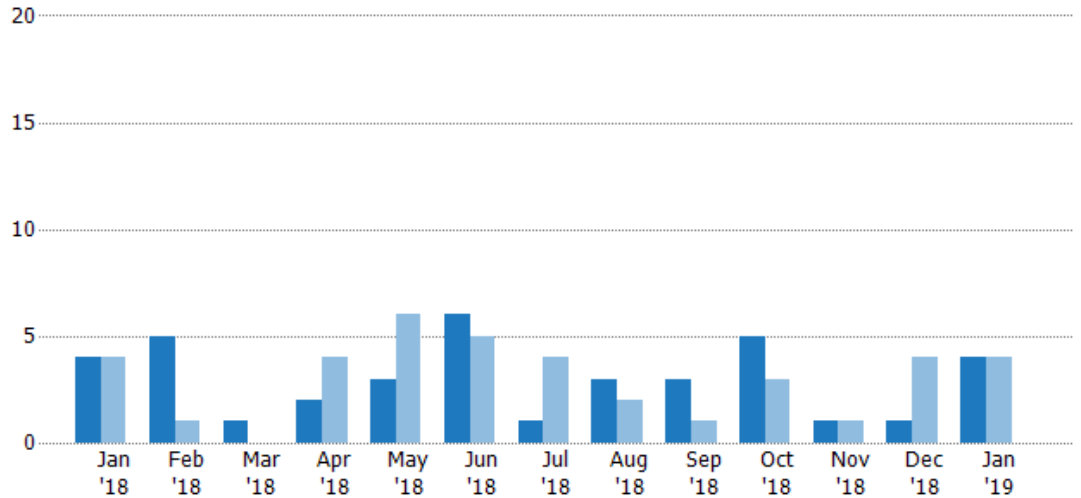
Key Metrics	Jan 2019	Jan 2018	+ / -	YTD 2019	YTD 2018	+ / -
Listing Activity Charts Metrics						
New Listing Count	4	4	+/-	39	39	+/-
New Listing Volume	\$2,034,000	\$1,679,500	+21.1%	\$18,607,500	\$16,799,800	+10.8%
Active Listing Count	27	27	+/-	N/A	N/A	
Active Listing Volume	\$15,022,500	\$15,599,000	-3.7%	N/A	N/A	
Average Listing Price	\$556,389	\$577,741	-3.7%	\$545,635	\$525,990	+3.7%
Median Listing Price	\$460,000	\$435,000	+5.7%	\$436,261	\$392,403	+11.2%
Median Days in RPR	188	246	-23.6%	188.35	262.33	-28.2%
Months of Inventory	27	3	+800%	13.5	27	-50%
Absorption Rate	3.7%	33.33%	-29.6%	7.41%	3.7%	+3.7%
Sales Activity Charts Metrics						
New Pending Sales Count	-	2	-	29	38	-23.7%
New Pending Sales Volume	-	\$638,000	-	\$13,428,499	\$14,655,800	-8.4%
Pending Sales Count	1	1	+/-	N/A	N/A	
Pending Sales Volume	\$580,000	\$499,000	+16.2%	N/A	N/A	
Closed Sales Count	1	2	-50%	24	33	-27.3%
Closed Sales Volume	\$730,000	\$751,000	-2.8%	\$11,093,360	\$10,520,450	+5.4%
Average Sales Price	\$730,000	\$375,500	+94.4%	\$462,223	\$318,802	+45%
Median Sales Price	\$730,000	\$375,500	+94.4%	\$452,816	\$304,862	+48.5%

New Listings

The number of new residential listings that were added each month.

Filters Used

ZIP: South Londonderry, VT 05155
 Property Type:
 Condo/Townhouse/Apt, Single
 Family Residence



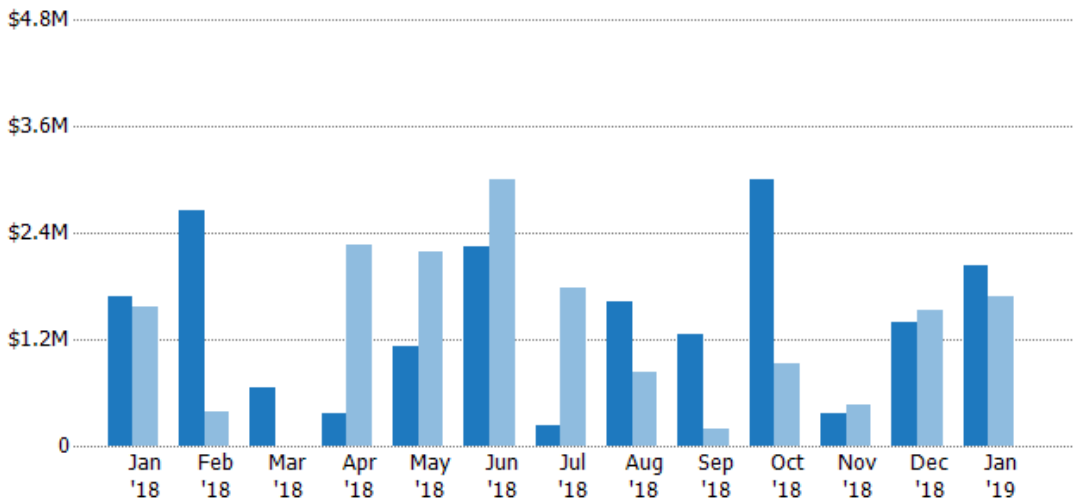
Current Year	4	5	1	2	3	6	1	3	3	5	1	1	4
Prior Year	4	1	-	4	6	5	4	2	1	3	1	4	4
Percent Change from Prior Year	0%	400%	100%	-50%	-50%	20%	-75%	50%	200%	67%	0%	-75%	0%

New Listing Volume

The sum of the listing price of residential listings that were added each month.

Filters Used

ZIP: South Londonderry, VT 05155
 Property Type:
 Condo/Townhouse/Apt, Single
 Family Residence



Current Year	\$1.68M	\$2.65M	\$649K	\$364K	\$1.12M	\$2.24M	\$225K	\$1.62M	\$1.26M	\$3M	\$375K	\$1.4M	\$2.03M
Prior Year	\$1.57M	\$385K	-	\$2.26M	\$2.18M	\$3M	\$1.79M	\$824K	\$199K	\$919K	\$460K	\$1.53M	\$1.68M
Percent Change from Prior Year	7%	588%	100%	-84%	-49%	-25%	-87%	96%	533%	226%	-19%	-9%	21%

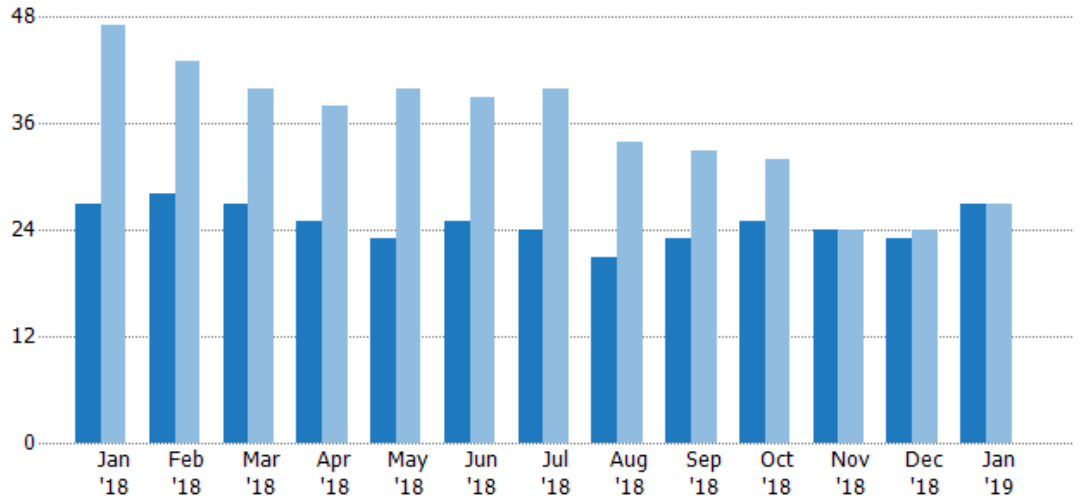
Active Listings

The number of active residential listings at the end of each month.

Filters Used

ZIP: South Londondery, VT 05155
 Property Type:
 Condo/Townhouse/Apt, Single
 Family Residence

Month/ Year	Count	% Chg.
Jan '19	27	0%
Jan '18	27	-42.6%
Jan '17	47	-10.6%



	Jan '18	Feb '18	Mar '18	Apr '18	May '18	Jun '18	Jul '18	Aug '18	Sep '18	Oct '18	Nov '18	Dec '18	Jan '19
Current Year	27	28	27	25	23	25	24	21	23	25	24	23	27
Prior Year	47	43	40	38	40	39	40	34	33	32	24	24	27
Percent Change from Prior Year	-43%	-35%	-33%	-34%	-43%	-36%	-40%	-38%	-30%	-22%	0%	-4%	0%

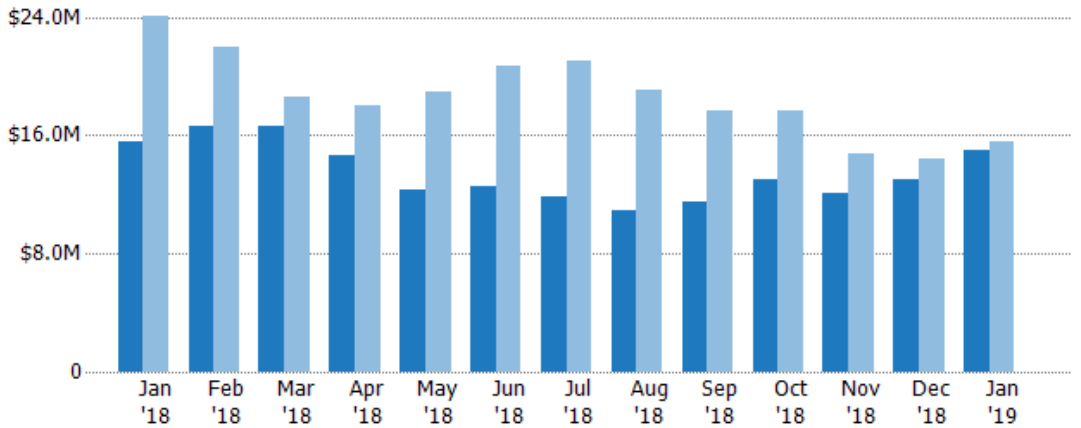
Active Listing Volume

The sum of the listing price of active residential listings at the end of each month.

Filters Used

ZIP: South Londondery, VT 05155
 Property Type:
 Condo/Townhouse/Apt, Single
 Family Residence

Month/ Year	Volume	% Chg.
Jan '19	\$15M	-3.7%
Jan '18	\$15.6M	-35.1%
Jan '17	\$24M	-22.8%



	Jan '18	Feb '18	Mar '18	Apr '18	May '18	Jun '18	Jul '18	Aug '18	Sep '18	Oct '18	Nov '18	Dec '18	Jan '19
Current Year	\$15.6M	\$16.6M	\$16.7M	\$14.7M	\$12.3M	\$12.6M	\$11.9M	\$10.9M	\$11.5M	\$13M	\$12.1M	\$13M	\$15M
Prior Year	\$24M	\$22M	\$18.6M	\$18M	\$18.9M	\$20.7M	\$21M	\$19.1M	\$17.7M	\$17.7M	\$14.8M	\$14.4M	\$15.6M
Percent Change from Prior Year	-35%	-24%	-10%	-19%	-35%	-39%	-43%	-43%	-35%	-27%	-19%	-10%	-4%

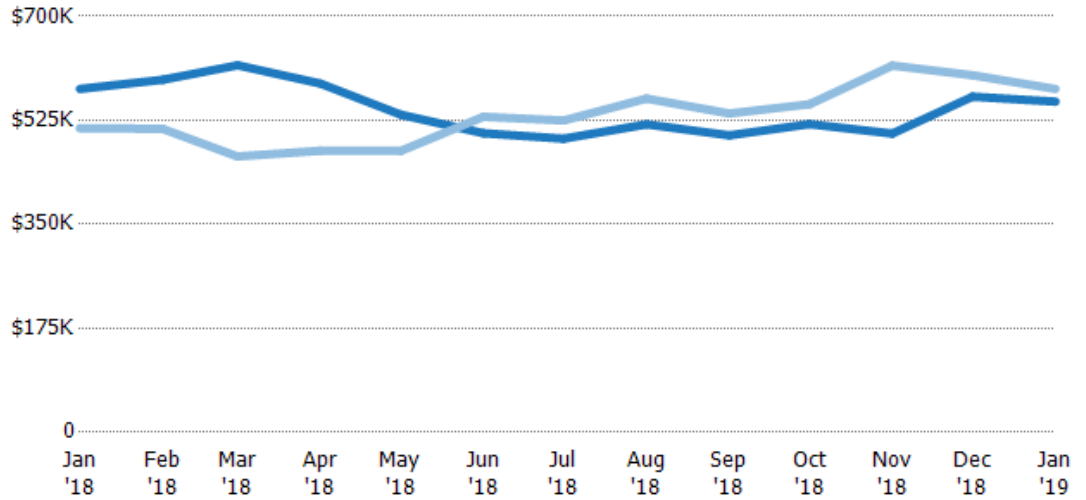
Average Listing Price

The average listing price of active residential listings at the end of each month.

Filters Used

ZIP: South Londondery, VT 05155
Property Type:
Condo/Townhouse/Apt, Single
Family Residence

Month/ Year	Price	% Chg.
Jan '19	\$556K	-3.7%
Jan '18	\$578K	12.9%
Jan '17	\$512K	-13.7%



Current Year	\$578K	\$593K	\$618K	\$587K	\$535K	\$503K	\$494K	\$518K	\$500K	\$519K	\$503K	\$565K	\$556K
Prior Year	\$512K	\$511K	\$464K	\$474K	\$473K	\$531K	\$525K	\$562K	\$536K	\$552K	\$617K	\$601K	\$578K
Percent Change from Prior Year	13%	16%	33%	24%	13%	-5%	-6%	-8%	-7%	-6%	-19%	-6%	-4%

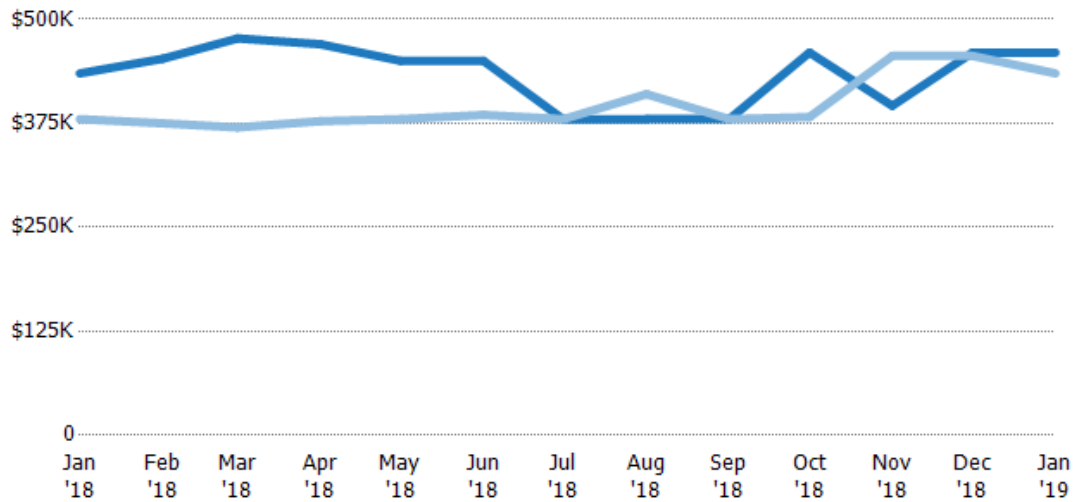
Median Listing Price

The median listing price of active residential listings at the end of each month.

Filters Used

ZIP: South Londondery, VT 05155
Property Type:
Condo/Townhouse/Apt, Single
Family Residence

Month/ Year	Price	% Chg.
Jan '19	\$460K	5.7%
Jan '18	\$435K	14.5%
Jan '17	\$380K	-7%



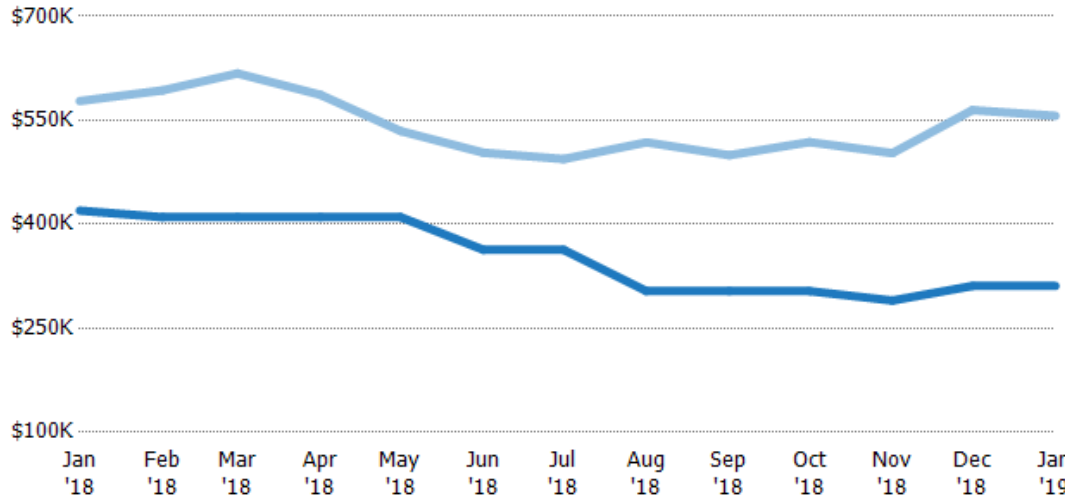
Current Year	\$435K	\$453K	\$477K	\$470K	\$450K	\$450K	\$380K	\$380K	\$380K	\$460K	\$396K	\$460K	\$460K
Prior Year	\$380K	\$375K	\$370K	\$378K	\$380K	\$385K	\$380K	\$410K	\$380K	\$383K	\$456K	\$456K	\$435K
Percent Change from Prior Year	14%	21%	29%	25%	18%	17%	0%	-7%	0%	20%	-13%	1%	6%

Average Listing Price vs Average Est Value

The average listing price as a percentage of the average AVM or RVM® valuation estimate for active listings each month.

Filters Used

ZIP: South Londonderry, VT 05155
 Property Type:
 Condo/Townhouse/Apt, Single
 Family Residence



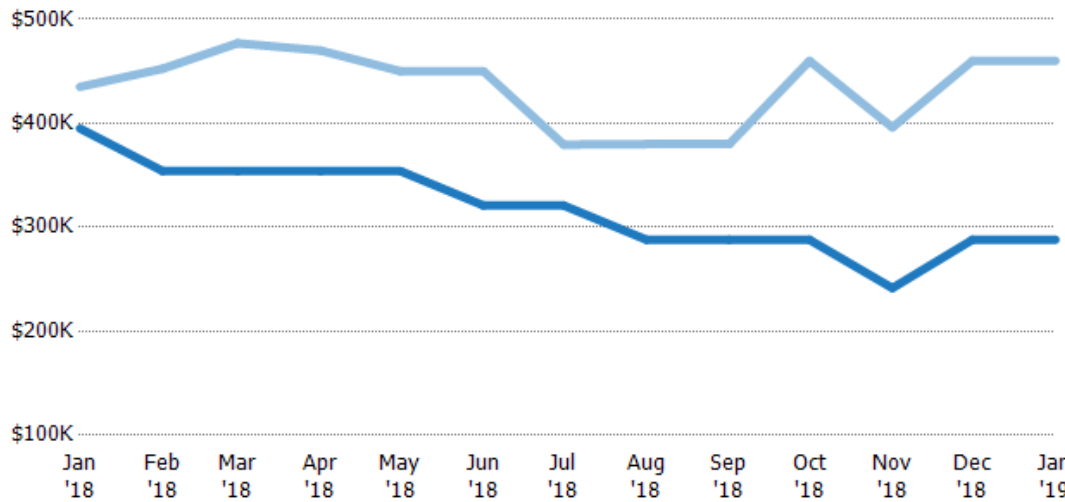
	Jan '18	Feb '18	Mar '18	Apr '18	May '18	Jun '18	Jul '18	Aug '18	Sep '18	Oct '18	Nov '18	Dec '18	Jan '19
Avg Est Value	\$420K	\$410K	\$410K	\$410K	\$410K	\$363K	\$363K	\$304K	\$304K	\$304K	\$290K	\$311K	\$311K
Avg Listing Price	\$578K	\$593K	\$618K	\$587K	\$535K	\$503K	\$494K	\$518K	\$500K	\$519K	\$503K	\$565K	\$556K
Avg Listing Price as a % of Avg Est Value	138%	145%	151%	143%	130%	139%	136%	171%	165%	171%	173%	182%	179%

Median Listing Price vs Median Est Value

The median listing price as a percentage of the median AVM or RVM® valuation estimate for active listings each month.

Filters Used

ZIP: South Londonderry, VT 05155
 Property Type:
 Condo/Townhouse/Apt, Single
 Family Residence



	Jan '18	Feb '18	Mar '18	Apr '18	May '18	Jun '18	Jul '18	Aug '18	Sep '18	Oct '18	Nov '18	Dec '18	Jan '19
Median Est Value	\$395K	\$354K	\$354K	\$354K	\$354K	\$321K	\$321K	\$288K	\$288K	\$288K	\$242K	\$288K	\$288K
Median Listing Price	\$435K	\$453K	\$477K	\$470K	\$450K	\$450K	\$380K	\$380K	\$380K	\$460K	\$396K	\$460K	\$460K
Med Listing Price as a % of Med Est Value	110%	128%	135%	133%	127%	140%	118%	132%	132%	160%	164%	160%	160%

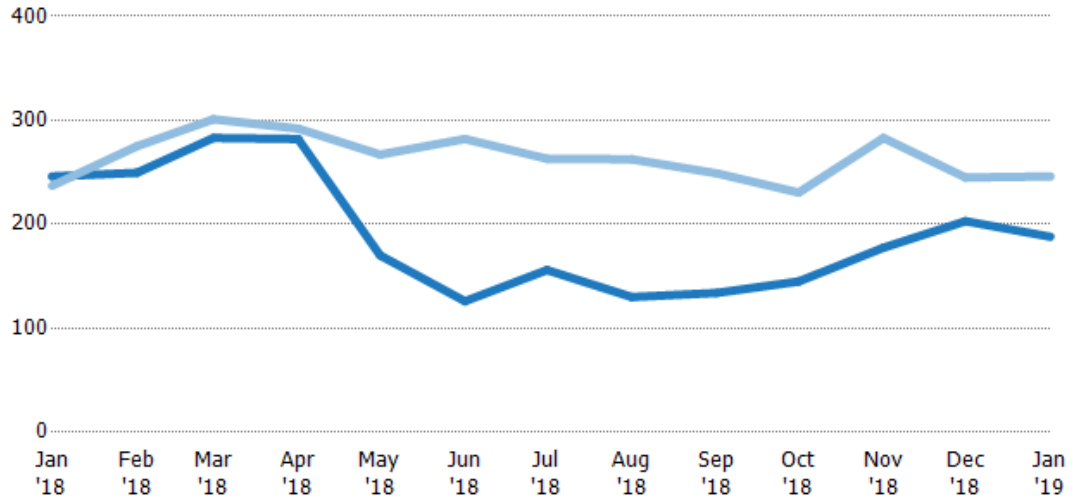
Median Days in RPR

The median number of days between when residential properties are first displayed as active listings in RPR and when accepted offers have been noted in RPR.

Filters Used

ZIP: South Londonderry, VT 05155
 Property Type:
 Condo/Townhouse/Apt, Single
 Family Residence

Month/ Year	Days	% Chg.
Jan '19	188	-23.6%
Jan '18	246	3.8%
Jan '17	237	-49.8%



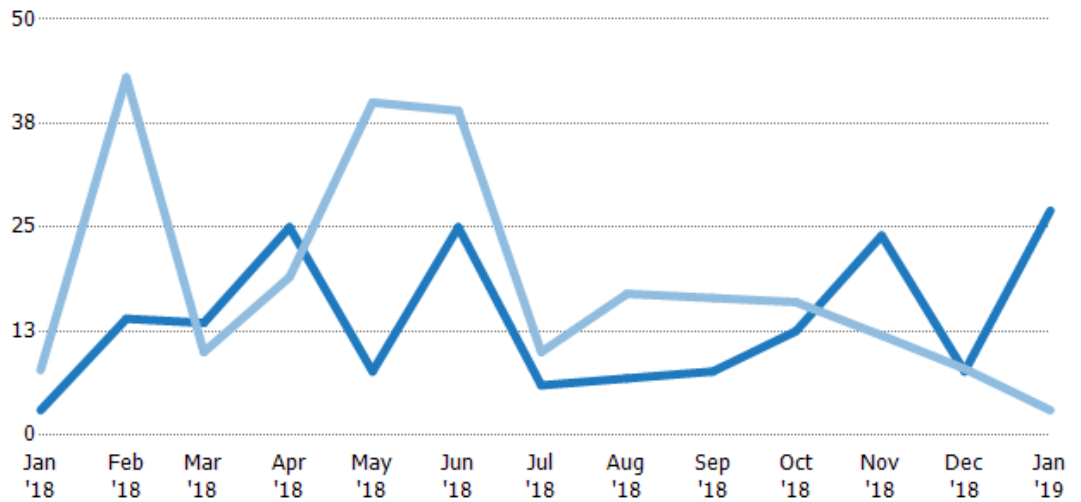
	Jan '18	Feb '18	Mar '18	Apr '18	May '18	Jun '18	Jul '18	Aug '18	Sep '18	Oct '18	Nov '18	Dec '18	Jan '19
Current Year	246	250	283	282	170	126	156	130	134	145	178	203	188
Prior Year	237	275	301	292	267	282	263	263	249	231	283	245	246
Percent Change from Prior Year	4%	-9%	-6%	-3%	-36%	-55%	-41%	-50%	-46%	-37%	-37%	-17%	-24%

Months of Inventory

The number of months it would take to exhaust active listings at the current sales rate.

Filters Used

ZIP: South Londonderry, VT 05155
 Property Type:
 Condo/Townhouse/Apt, Single
 Family Residence



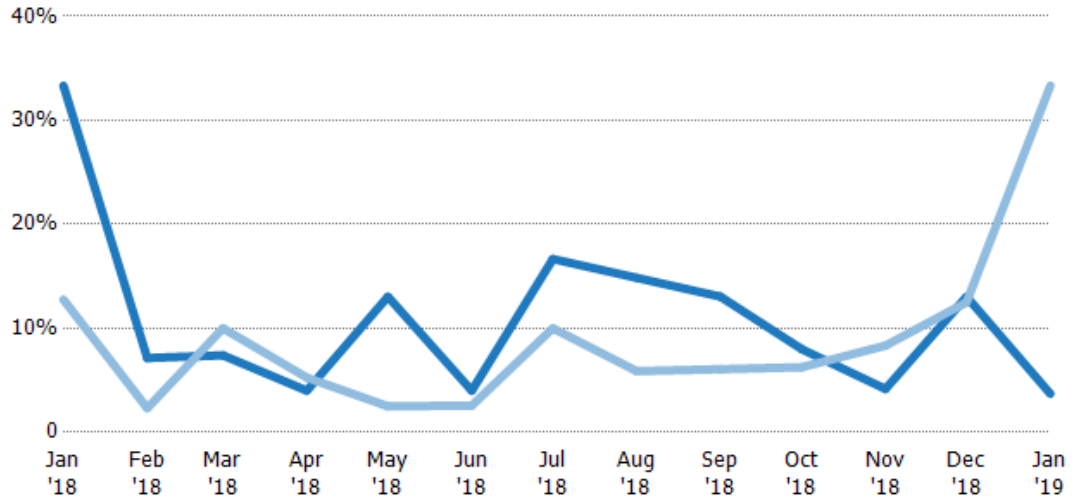
	Jan '18	Feb '18	Mar '18	Apr '18	May '18	Jun '18	Jul '18	Aug '18	Sep '18	Oct '18	Nov '18	Dec '18	Jan '19
Current Year	3	14	13.5	25	7.67	25	6	6.83	7.67	12.5	24	7.67	27
Prior Year	7.83	43	10	19	40	39	10	17	16.5	16	12	8	3
Percent Change from Prior Year	-62%	-67%	35%	32%	-81%	-36%	-40%	-100%	100%	-22%	100%	-4%	800%

Absorption Rate

The percentage of inventory sold per month.

Filters Used

ZIP: South Londonderry, VT 05155
 Property Type:
 Condo/Townhouse/Apt, Single
 Family Residence



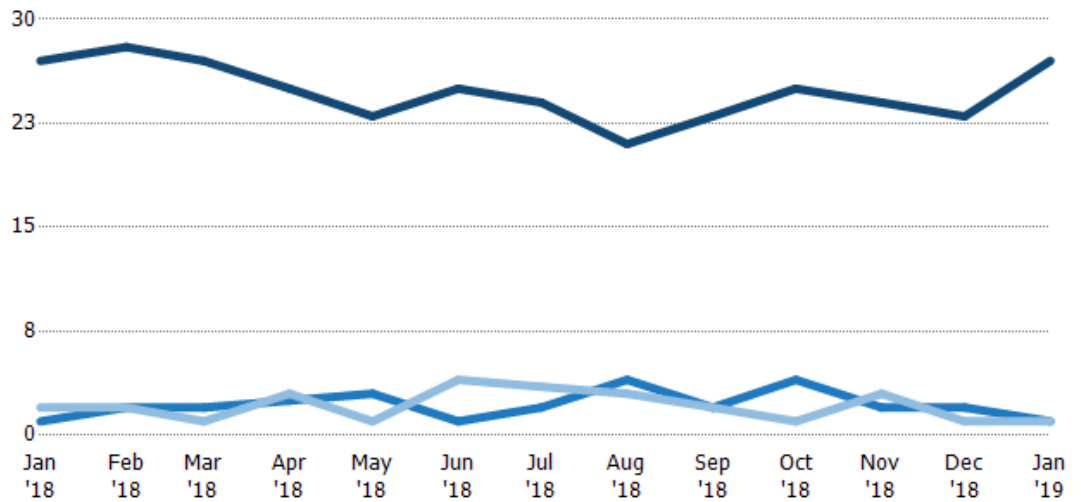
	Jan '18	Feb '18	Mar '18	Apr '18	May '18	Jun '18	Jul '18	Aug '18	Sep '18	Oct '18	Nov '18	Dec '18	Jan '19
Current Year	33%	7%	7%	4%	13%	4%	17%	15%	13%	8%	4%	13%	4%
Prior Year	13%	2%	10%	5%	3%	3%	10%	6%	6%	6%	8%	13%	33%
Change from Prior Year	-21%	-5%	3%	1%	-11%	-1%	-7%	6%	-13%	-2%	4%	-1%	30%

Active/Pending/Sold Units

The number of residential properties that were Active, Pending and Sold each month.

Filters Used

ZIP: South Londonderry, VT 05155
 Property Type:
 Condo/Townhouse/Apt, Single
 Family Residence



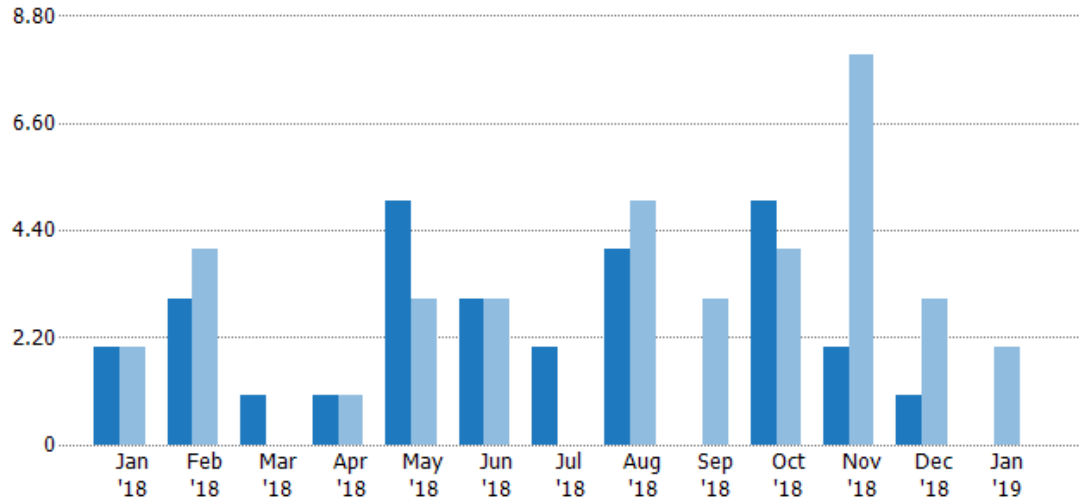
	Jan '18	Feb '18	Mar '18	Apr '18	May '18	Jun '18	Jul '18	Aug '18	Sep '18	Oct '18	Nov '18	Dec '18	Jan '19
Active	27	28	27	25	23	25	24	21	23	25	24	23	27
Pending	1	2	2	2.5	3	1	2	4	2	4	2	2	1
Sold	2	2	1	3	1	4	3.5	3	2	1	3	1	1

New Pending Sales

The number of residential properties with accepted offers that were added each month.

Filters Used

ZIP: South Londondery, VT 05155
 Property Type:
 Condo/Townhouse/Apt, Single
 Family Residence



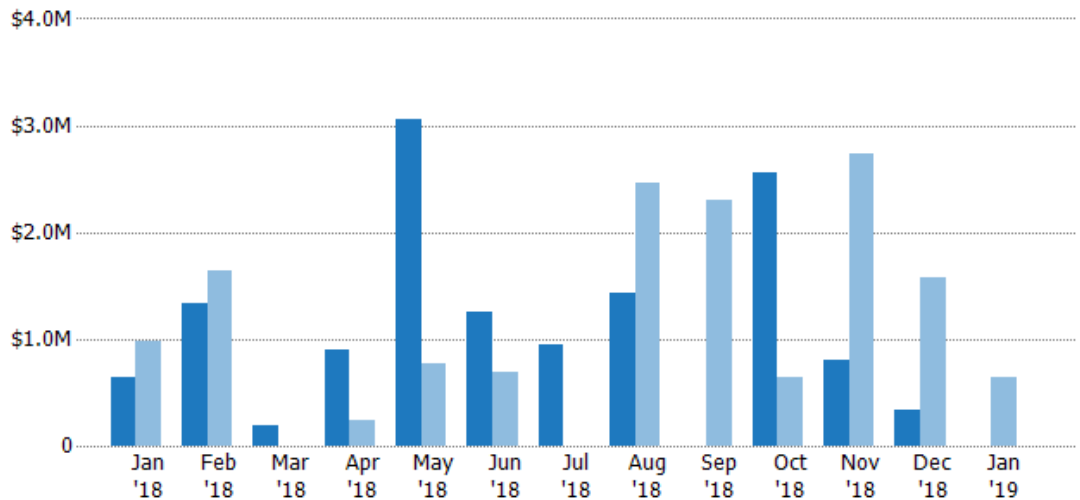
Current Year	2	3	1	1	5	3	2	4	-	5	2	1	-
Prior Year	2	4	-	1	3	3	-	5	3	4	8	3	2
Percent Change from Prior Year	0%	-25%	100%	0%	67%	0%	100%	-20%	-100%	25%	-75%	-67%	-100%

New Pending Sales Volume

The sum of the sales price of residential properties with accepted offers that were added each month.

Filters Used

ZIP: South Londondery, VT 05155
 Property Type:
 Condo/Townhouse/Apt, Single
 Family Residence



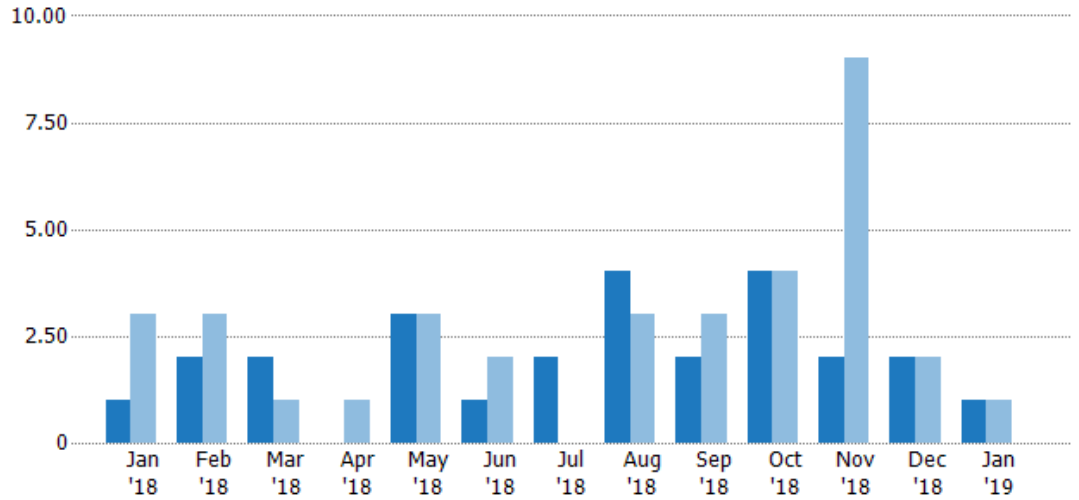
Current Year	\$638K	\$1.34M	\$190K	\$895K	\$3.05M	\$1.25M	\$949K	\$1.43M	-	\$2.55M	\$805K	\$330K	-
Prior Year	\$975K	\$1.63M	-	\$239K	\$774K	\$687K	-	\$2.46M	\$2.3M	\$642K	\$2.73M	\$1.58M	\$638K
Percent Change from Prior Year	-35%	-18%	100%	274%	294%	82%	100%	-42%	-100%	298%	-71%	-79%	-100%

Pending Sales

The number of residential properties with accepted offers that were available at the end each month.

Filters Used

ZIP: South Londonderry, VT 05155
 Property Type:
 Condo/Townhouse/Apt, Single
 Family Residence



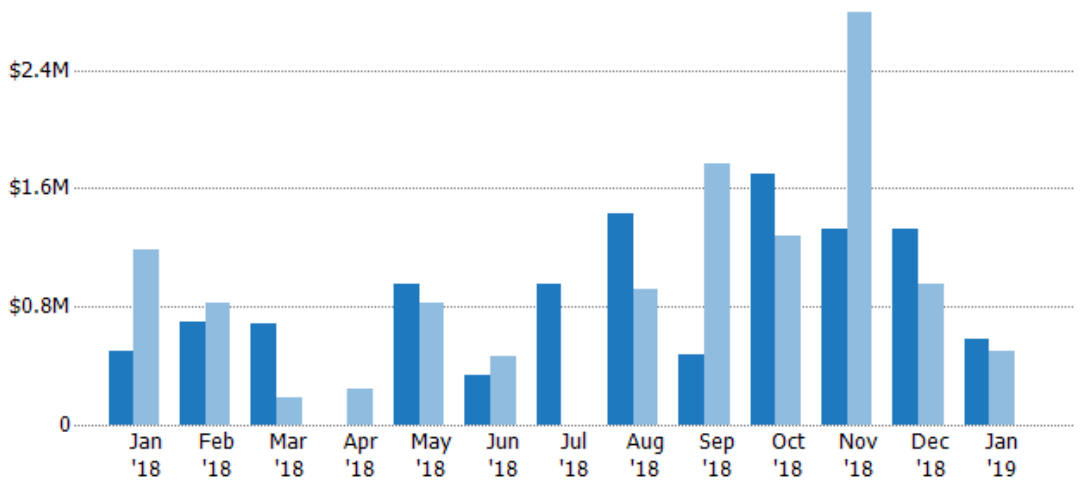
	Jan '18	Feb '18	Mar '18	Apr '18	May '18	Jun '18	Jul '18	Aug '18	Sep '18	Oct '18	Nov '18	Dec '18	Jan '19
Current Year	1	2	2	-	3	1	2	4	2	4	2	2	1
Prior Year	3	3	1	1	3	2	-	3	3	4	9	2	1
Percent Change from Prior Year	-67%	-33%	100%	-100%	0%	-50%	100%	33%	-33%	0%	-78%	0%	0%

Pending Sales Volume

The sum of the sales price of residential properties with accepted offers that were available at the end of each month.

Filters Used

ZIP: South Londonderry, VT 05155
 Property Type:
 Condo/Townhouse/Apt, Single
 Family Residence



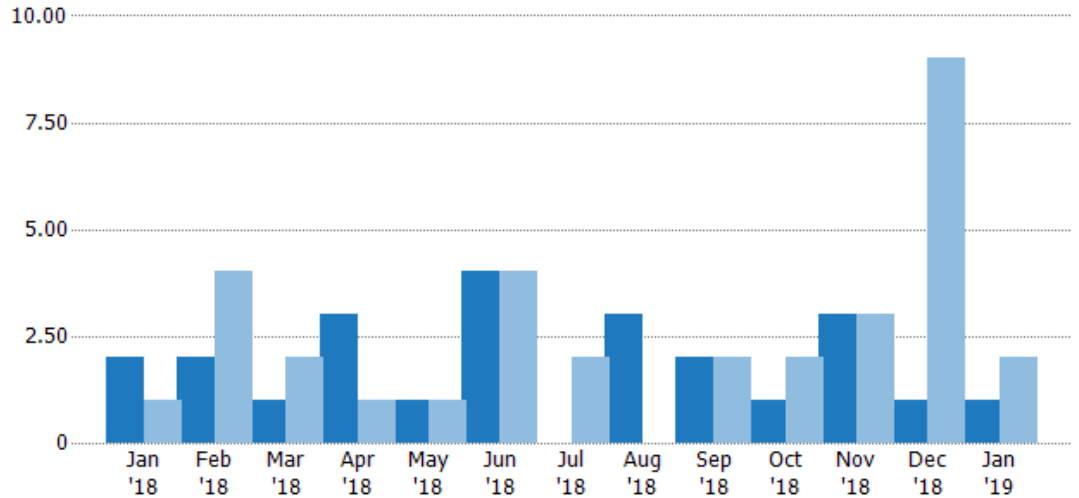
	Jan '18	Feb '18	Mar '18	Apr '18	May '18	Jun '18	Jul '18	Aug '18	Sep '18	Oct '18	Nov '18	Dec '18	Jan '19
Current Year	\$499K	\$698K	\$689K	-	\$950K	\$339K	\$949K	\$1.43M	\$474K	\$1.7M	\$1.33M	\$1.33M	\$580K
Prior Year	\$1.19M	\$828K	\$189K	\$239K	\$824K	\$469K	-	\$914K	\$1.76M	\$1.28M	\$2.79M	\$950K	\$499K
Percent Change from Prior Year	-58%	-16%	264%	-100%	15%	-28%	100%	56%	-73%	33%	-52%	40%	16%

Closed Sales

The total number of residential properties sold each month.

Filters Used

ZIP: South Londonderry, VT 05155
 Property Type:
 Condo/Townhouse/Apt, Single
 Family Residence



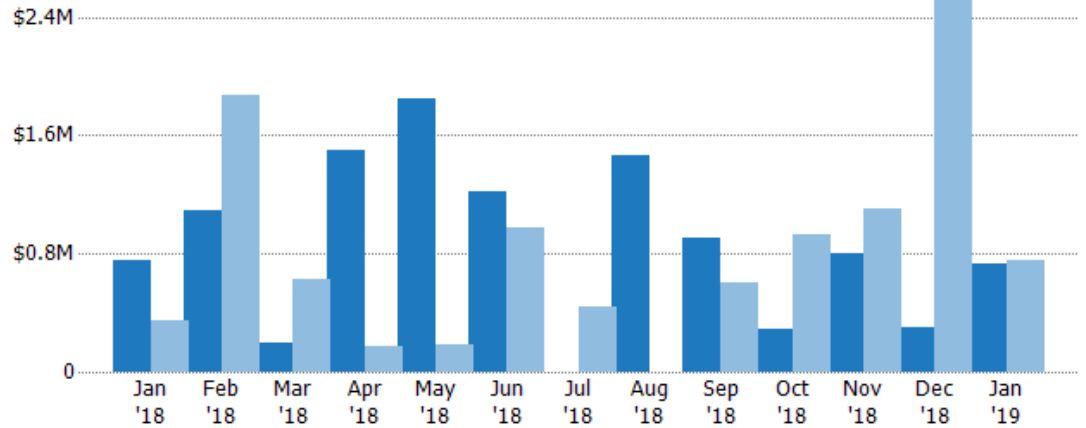
Current Year	2	2	1	3	1	4	-	3	2	1	3	1	1
Prior Year	1	4	2	1	1	4	2	-	2	2	3	9	2
Percent Change from Prior Year	100%	-50%	-50%	200%	0%	0%	-100%	100%	0%	-50%	0%	-89%	-50%

Closed Sales Volume

The sum of the sales price of residential properties sold each month.

Filters Used

ZIP: South Londonderry, VT 05155
 Property Type:
 Condo/Townhouse/Apt, Single
 Family Residence



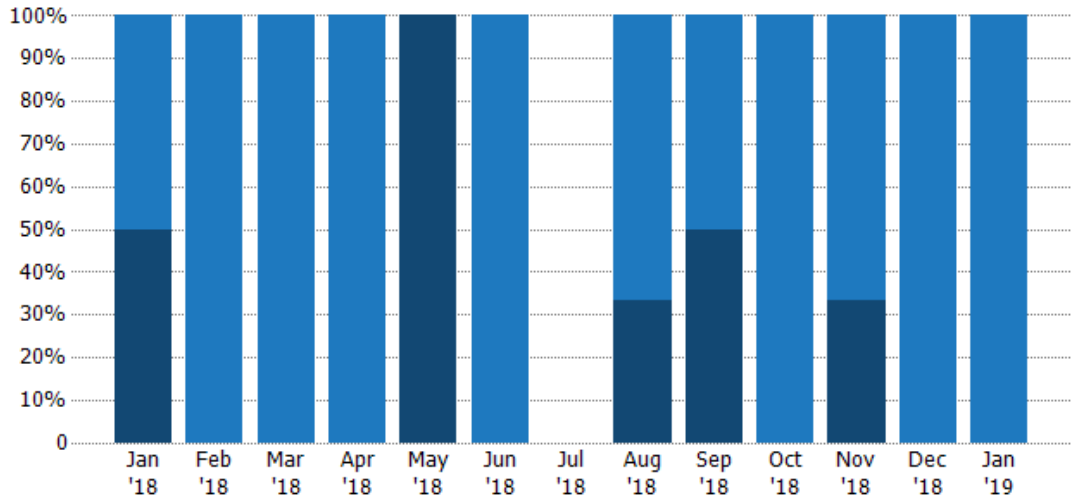
Current Year	\$751K	\$1.09M	\$195K	\$1.49M	\$1.85M	\$1.22M	-	\$1.46M	\$905K	\$290K	\$804K	\$305K	\$730K
Prior Year	\$350K	\$1.87M	\$625K	\$175K	\$180K	\$972K	\$444K	-	\$600K	\$928K	\$1.11M	\$2.52M	\$751K
Percent Change from Prior Year	115%	-42%	-69%	754%	928%	25%	-100%	100%	51%	-69%	-28%	-88%	-3%

Closed Sales by Property Type

The percentage of residential properties sold each month by property type.

Filters Used

ZIP: South Londondery, VT 05155
 Property Type:
 Condo/Townhouse/Apt, Single
 Family Residence



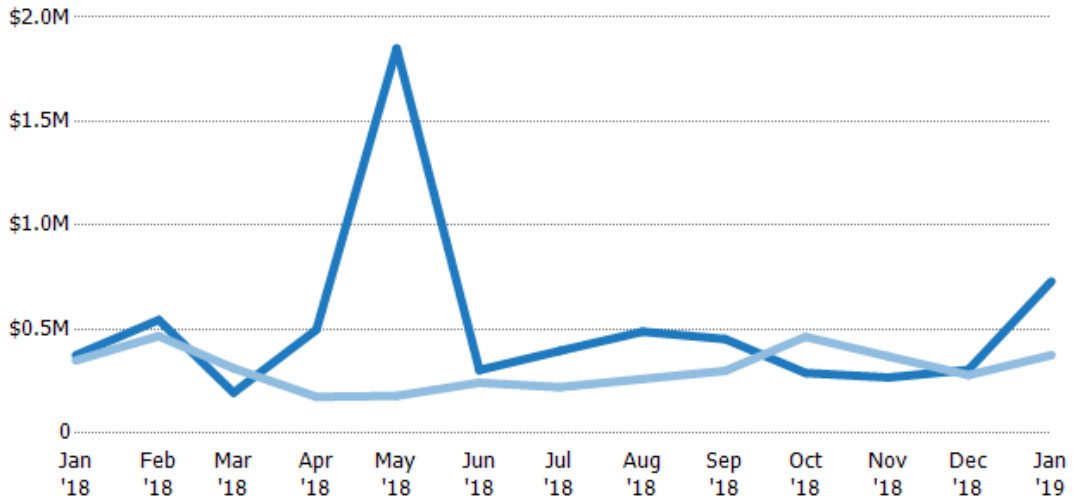
Property Type	Jan '18	Feb '18	Mar '18	Apr '18	May '18	Jun '18	Jul '18	Aug '18	Sep '18	Oct '18	Nov '18	Dec '18	Jan '19
Condo/Townhouse	50%	100%	100%	100%	-	100%	-	67%	50%	100%	67%	100%	100%
Single Family Residence	50%	-	-	-	100%	-	-	33%	50%	-	33%	-	-

Average Sales Price

The average sales price of the residential properties sold each month.

Filters Used

ZIP: South Londondery, VT 05155
 Property Type:
 Condo/Townhouse/Apt, Single
 Family Residence



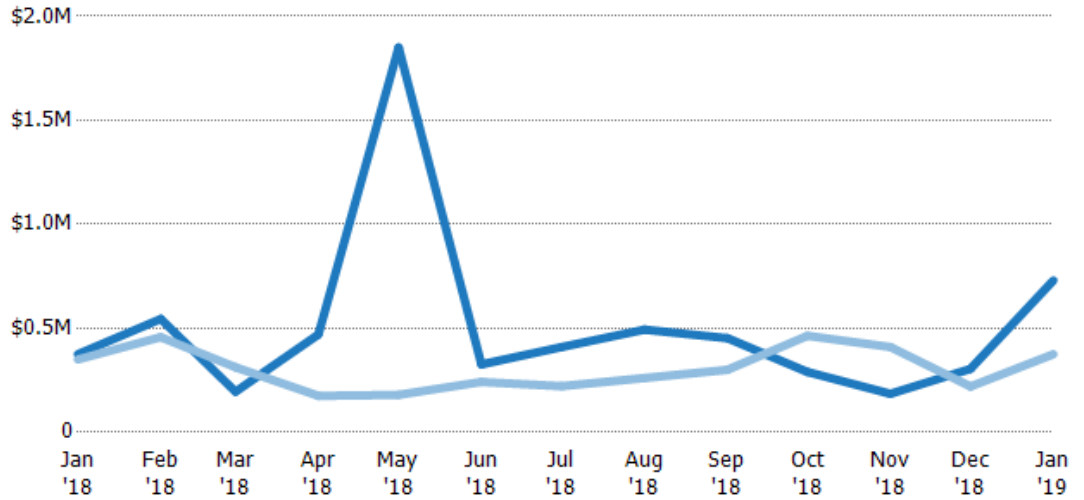
Property Type	Jan '18	Feb '18	Mar '18	Apr '18	May '18	Jun '18	Jul '18	Aug '18	Sep '18	Oct '18	Nov '18	Dec '18	Jan '19
Current Year	\$376K	\$545K	\$195K	\$498K	\$1.85M	\$304K	\$396K	\$488K	\$453K	\$290K	\$268K	\$305K	\$730K
Prior Year	\$350K	\$467K	\$313K	\$175K	\$180K	\$243K	\$222K	\$261K	\$300K	\$464K	\$370K	\$280K	\$376K
Percent Change from Prior Year	7%	17%	-38%	185%	928%	25%	-100%	100%	51%	-37%	-28%	9%	94%

Median Sales Price

The median sales price of the residential properties sold each month.

Filters Used

ZIP: South Londonderry, VT 05155
 Property Type:
 Condo/Townhouse/Apt, Single
 Family Residence



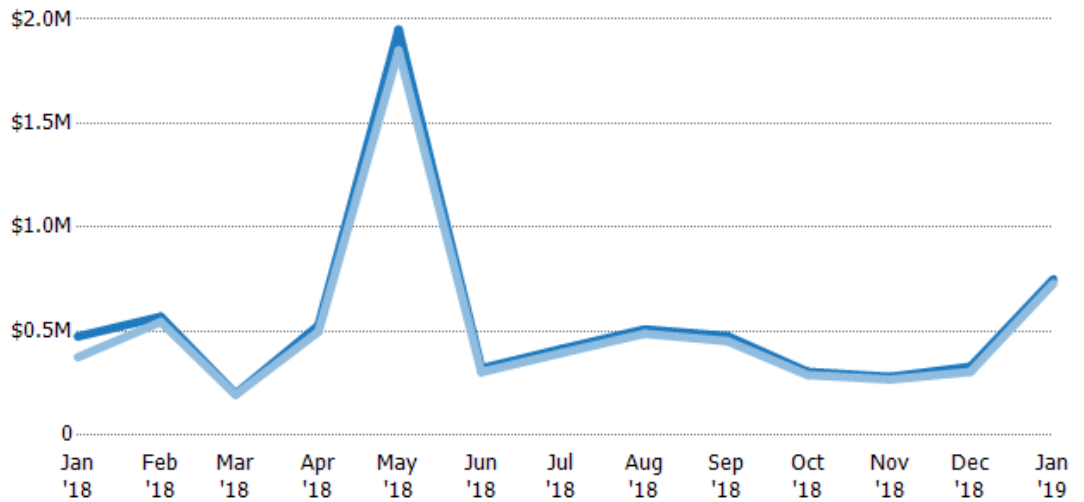
Current Year	\$376K	\$545K	\$195K	\$470K	\$1.85M	\$326K	\$410K	\$494K	\$453K	\$290K	\$185K	\$305K	\$730K
Prior Year	\$350K	\$458K	\$313K	\$175K	\$180K	\$242K	\$222K	\$261K	\$300K	\$464K	\$410K	\$220K	\$376K
Percent Change from Prior Year	7%	19%	-38%	169%	928%	35%	-100%	100%	51%	-37%	-55%	39%	94%

Average Sales Price vs Average Listing Price

The average sales price as a percentage of the average listing price for properties sold each month.

Filters Used

ZIP: South Londonderry, VT 05155
 Property Type:
 Condo/Townhouse/Apt, Single
 Family Residence



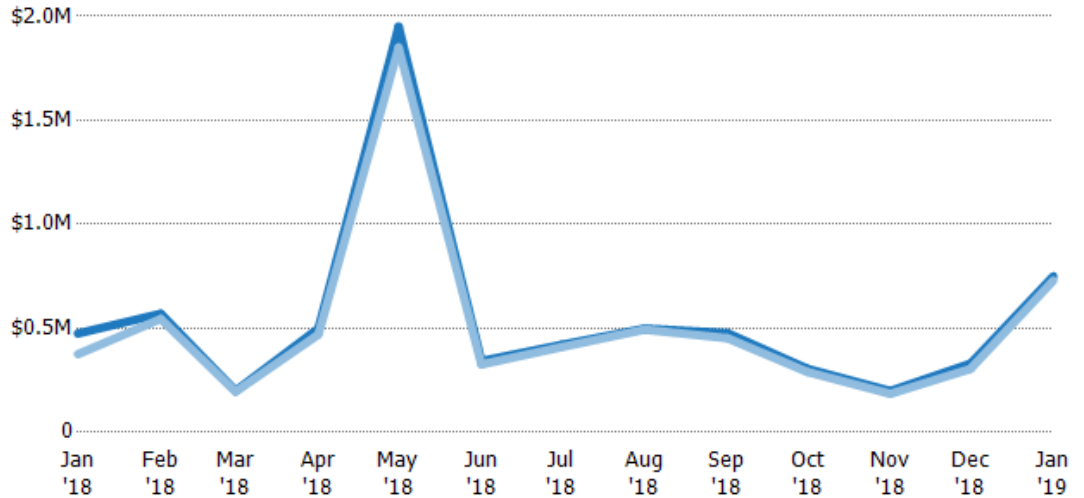
Avg List Price	\$475K	\$570K	\$199K	\$528K	\$1.95M	\$321K	\$415K	\$509K	\$477K	\$305K	\$281K	\$330K	\$750K
Avg Sales Price	\$376K	\$545K	\$195K	\$498K	\$1.85M	\$304K	\$396K	\$488K	\$453K	\$290K	\$268K	\$305K	\$730K
Avg Sales Price as a % of Avg List Price	79%	96%	98%	94%	95%	95%	95%	96%	95%	95%	95%	92%	97%

Median Sales Price vs Median Listing Price

The median sales price as a percentage of the median listing price for properties sold each month.

Filters Used

ZIP: South Londonderry, VT 05155
 Property Type:
 Condo/Townhouse/Apt, Single
 Family Residence



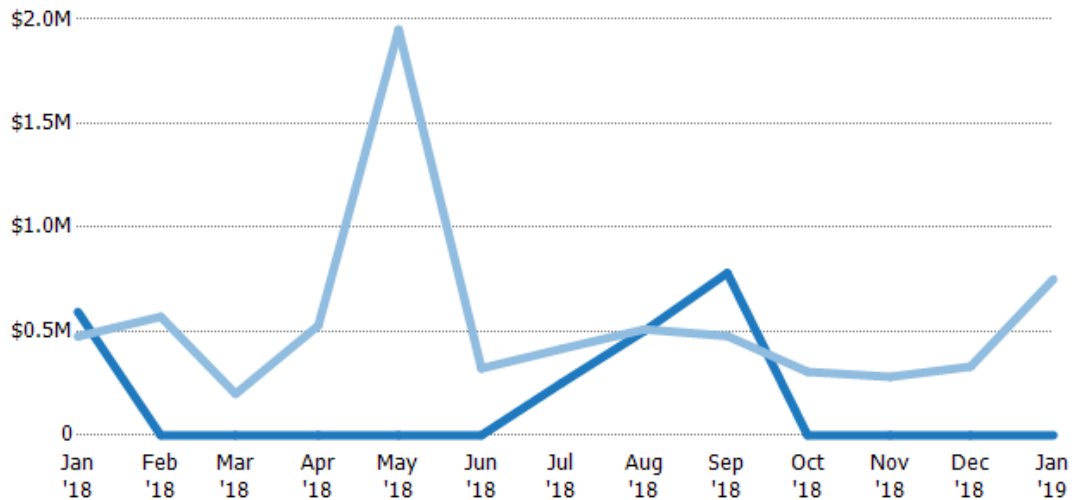
Median List Price	\$475K	\$570K	\$199K	\$499K	\$1.95M	\$343K	\$421K	\$499K	\$477K	\$305K	\$199K	\$330K	\$750K
Median Sales Price	\$376K	\$545K	\$195K	\$470K	\$1.85M	\$326K	\$410K	\$494K	\$453K	\$290K	\$185K	\$305K	\$730K
Med Sales Price as a % of Med List Price	79%	96%	98%	94%	95%	95%	97%	99%	95%	95%	93%	92%	97%

Average Sales Price vs Average Est Value

The average sales price as a percentage of the average AVM or RVM® valuation estimate for properties sold each month.

Filters Used

ZIP: South Londonderry, VT 05155
 Property Type:
 Condo/Townhouse/Apt, Single
 Family Residence



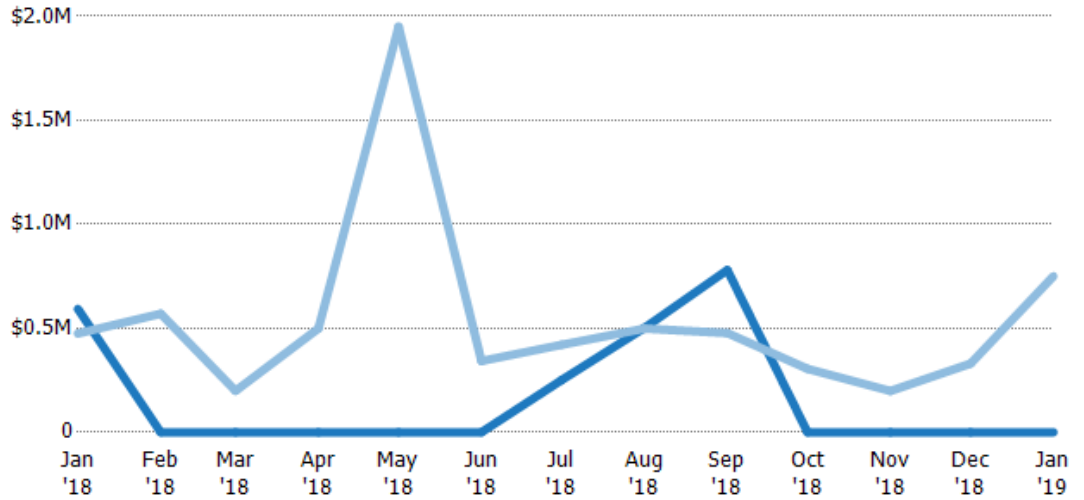
Avg Est Value	\$593K	\$0	\$0	\$0	\$0	\$0	\$251K	\$502K	\$780K	\$0	\$0	\$0	\$0
Avg Sales Price	\$475K	\$570K	\$199K	\$528K	\$1.95M	\$321K	\$415K	\$509K	\$477K	\$305K	\$281K	\$330K	\$750K
Avg Sales Price as a % of Avg Est Value	80%	100%	100%	100%	100%	100%	101%	101%	61%	100%	100%	100%	100%

Median Sales Price vs Median Est Value

The median sales price as a percent of the median AVM or RVM® valuation estimate for properties sold each month.

Filters Used

ZIP: South Londonderry, VT 05155
 Property Type:
 Condo/Townhouse/Apt, Single
 Family Residence



Median Est Value	\$593K	\$0	\$0	\$0	\$0	\$251K	\$502K	\$780K	\$0	\$0	\$0	\$0	
Median Sales Price	\$475K	\$570K	\$199K	\$499K	\$1.95M	\$343K	\$421K	\$499K	\$477K	\$305K	\$199K	\$330K	\$750K
Med Sales Price as a % of Med Est Value	80%	100%	100%	100%	100%	100%	100%	99%	61%	100%	100%	100%	100%