

## Summary of Key Listing and Sales Metrics

A summary of the key metrics selected to be included in the report. MLS sources where licensed.

Key Metrics	Jan 2019	Jan 2018	+ / -	YTD 2019	YTD 2018	+ / -
<b>Listing Activity Charts Metrics</b>						
New Listing Count	6	3	+100%	110	85	+29.4%
New Listing Volume	\$1,172,700	\$331,000	+254.3%	\$19,824,534	\$15,642,700	+26.7%
Active Listing Count	43	44	-2.3%	N/A	N/A	
Active Listing Volume	\$9,100,499	\$7,972,900	+14.1%	N/A	N/A	
Average Listing Price	\$211,640	\$181,202	+16.8%	\$199,677	\$195,782	+2%
Median Listing Price	\$189,900	\$162,000	+17.2%	\$187,543	\$169,564	+10.6%
Median Days in RPR	169	174.5	-3.2%	130.69	132.4	-1.3%
Months of Inventory	21.5	11	+95.5%	10.8	44	-75.6%
Absorption Rate	4.65%	9.09%	-4.4%	9.3%	2.27%	+7%
<b>Sales Activity Charts Metrics</b>						
New Pending Sales Count	4	3	+33.3%	78	57	+36.8%
New Pending Sales Volume	\$457,800	\$454,800	+0.7%	\$12,103,099	\$9,569,600	+26.5%
Pending Sales Count	7	6	+16.7%	N/A	N/A	
Pending Sales Volume	\$941,200	\$1,030,300	-8.6%	N/A	N/A	
Closed Sales Count	2	4	-50%	65	41	+58.5%
Closed Sales Volume	\$190,900	\$777,500	-75.4%	\$10,076,800	\$6,656,235	+51.4%
Average Sales Price	\$95,450	\$194,375	-50.9%	\$155,028	\$162,347	-4.5%
Median Sales Price	\$95,450	\$205,000	-53.4%	\$152,475	\$153,393	-0.6%

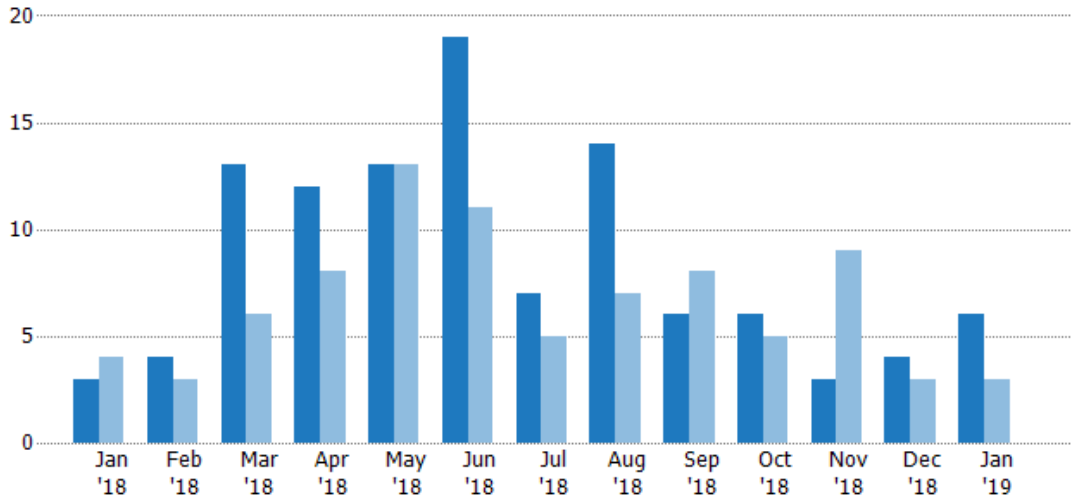
## New Listings

The number of new residential listings that were added each month.

### Filters Used

ZIP: Newport, VT 05855  
 Property Type:  
 Condo/Townhouse/Apt, Single  
 Family Residence

Month/ Year	Count	% Chg.
Jan '19	6	100%
Jan '18	3	-25%
Jan '17	4	-25%



Current Year	3	4	13	12	13	19	7	14	6	6	3	4	6
Prior Year	4	3	6	8	13	11	5	7	8	5	9	3	3
Percent Change from Prior Year	-25%	33%	117%	50%	0%	73%	40%	100%	-25%	20%	-67%	33%	100%

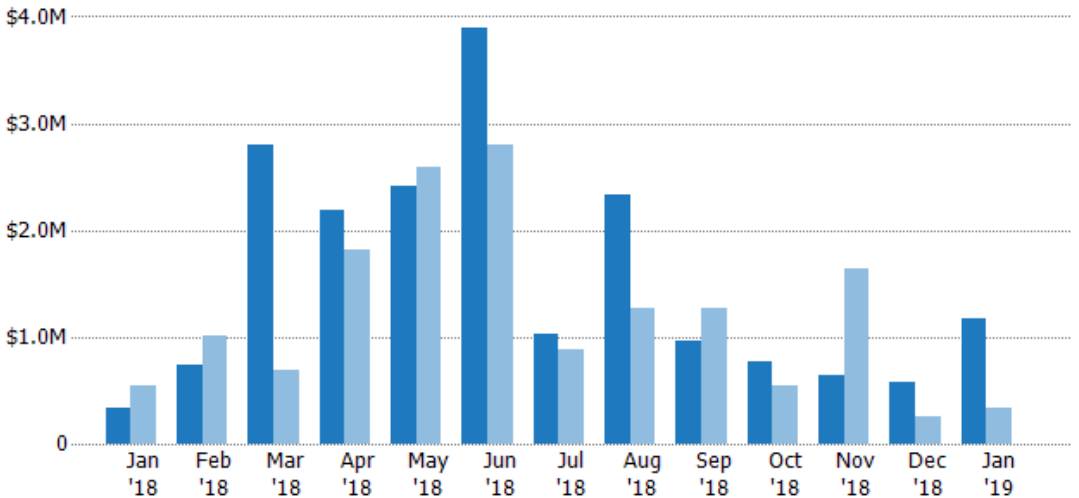
## New Listing Volume

The sum of the listing price of residential listings that were added each month.

### Filters Used

ZIP: Newport, VT 05855  
 Property Type:  
 Condo/Townhouse/Apt, Single  
 Family Residence

Month/ Year	Volume	% Chg.
Jan '19	\$1.17M	254.3%
Jan '18	\$331K	-39.1%
Jan '17	\$544K	-3.6%



Current Year	\$331K	\$741K	\$2.8M	\$2.19M	\$2.41M	\$3.89M	\$1.02M	\$2.33M	\$957K	\$762K	\$644K	\$584K	\$1.17M
Prior Year	\$544K	\$1.01M	\$684K	\$1.82M	\$2.6M	\$2.8M	\$875K	\$1.27M	\$1.27M	\$544K	\$1.65M	\$248K	\$331K
Percent Change from Prior Year	-39%	-27%	309%	20%	-7%	39%	17%	83%	-24%	40%	-61%	136%	254%

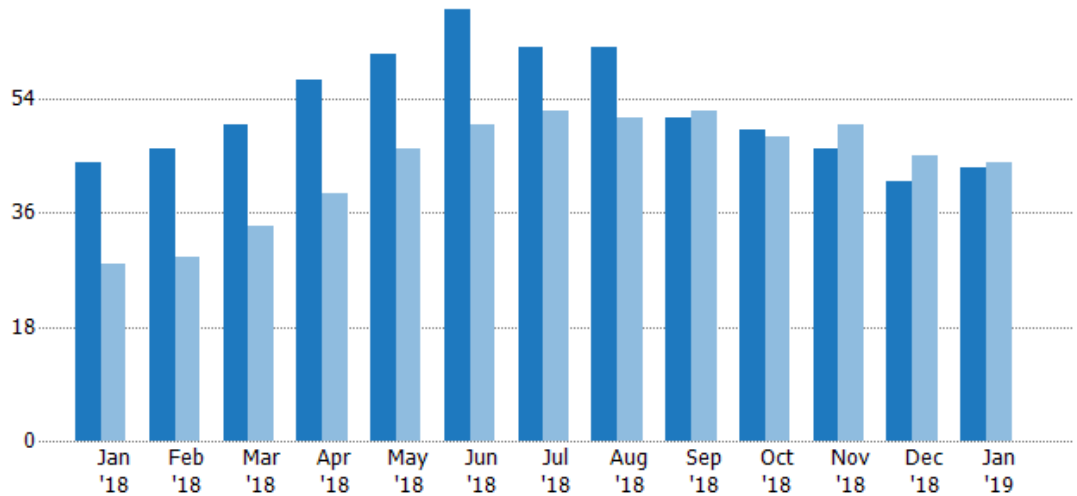
## Active Listings

The number of active residential listings at the end of each month.

### Filters Used

ZIP: Newport, VT 05855  
 Property Type:  
 Condo/Townhouse/Apt, Single  
 Family Residence

Month/ Year	Count	% Chg.
Jan '19	43	-2.3%
Jan '18	44	57.1%
Jan '17	28	132.1%



Current Year	44	46	50	57	61	68	62	62	51	49	46	41	43
Prior Year	28	29	34	39	46	50	52	51	52	48	50	45	44
Percent Change from Prior Year	57%	59%	47%	46%	33%	36%	19%	22%	-2%	2%	-8%	-9%	-2%

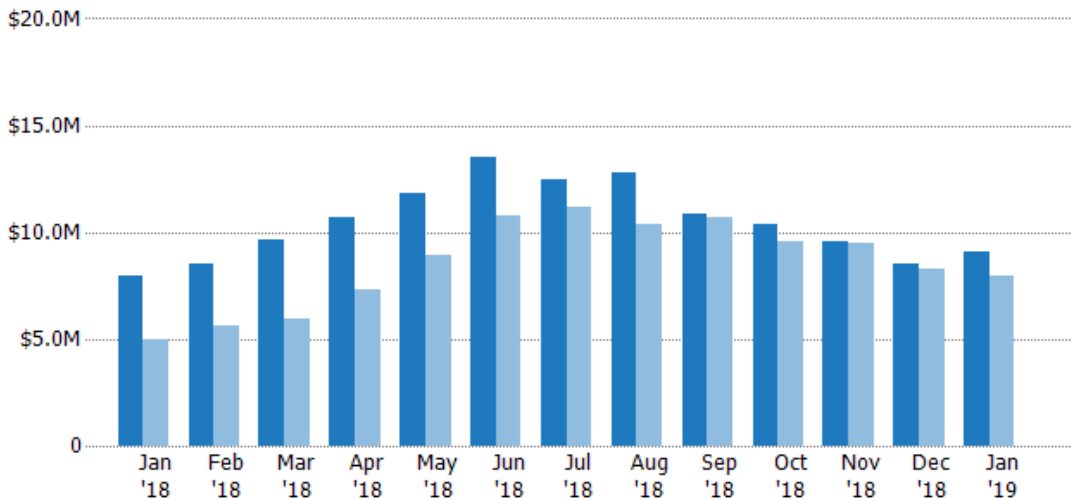
## Active Listing Volume

The sum of the listing price of active residential listings at the end of each month.

### Filters Used

ZIP: Newport, VT 05855  
 Property Type:  
 Condo/Townhouse/Apt, Single  
 Family Residence

Month/ Year	Volume	% Chg.
Jan '19	\$9.1M	14.1%
Jan '18	\$7.97M	59.1%
Jan '17	\$5.01M	106.9%



Current Year	\$7.97M	\$8.5M	\$9.66M	\$10.7M	\$11.9M	\$13.5M	\$12.5M	\$12.8M	\$10.9M	\$10.3M	\$9.55M	\$8.52M	\$9.1M
Prior Year	\$5.01M	\$5.6M	\$5.95M	\$7.32M	\$8.95M	\$10.8M	\$11.2M	\$10.4M	\$10.7M	\$9.57M	\$9.47M	\$8.32M	\$7.97M
Percent Change from Prior Year	59%	52%	62%	46%	32%	25%	11%	23%	2%	8%	1%	2%	14%

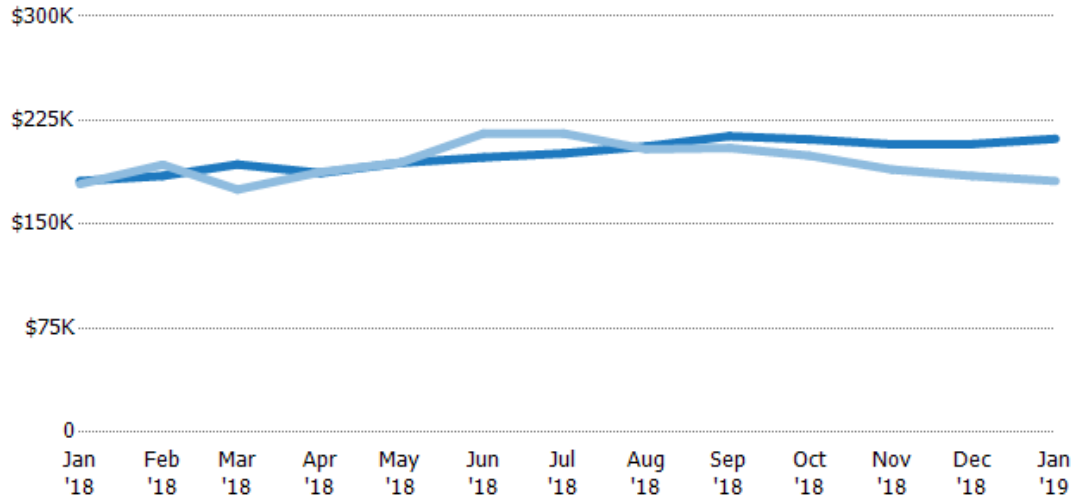
## Average Listing Price

The average listing price of active residential listings at the end of each month.

### Filters Used

ZIP: Newport, VT 05855  
 Property Type:  
 Condo/Townhouse/Apt, Single  
 Family Residence

Month/ Year	Price	% Chg.
Jan '19	\$212K	16.8%
Jan '18	\$181K	1.3%
Jan '17	\$179K	-10.9%



Current Year	\$181K	\$185K	\$193K	\$187K	\$194K	\$198K	\$201K	\$206K	\$214K	\$211K	\$208K	\$208K	\$212K
Prior Year	\$179K	\$193K	\$175K	\$188K	\$195K	\$215K	\$215K	\$204K	\$205K	\$199K	\$189K	\$185K	\$181K
Percent Change from Prior Year	1%	-4%	10%	0%	0%	-8%	-7%	1%	4%	6%	10%	12%	17%

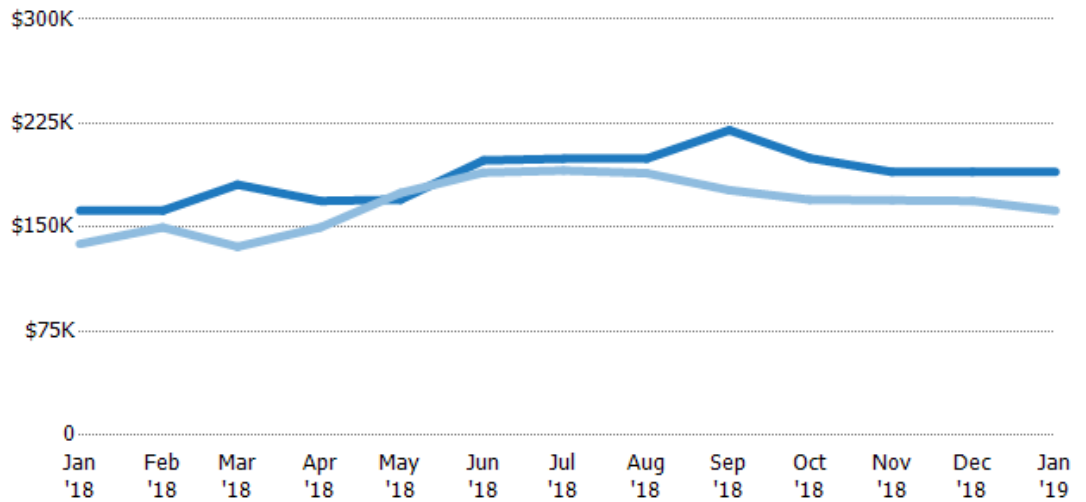
## Median Listing Price

The median listing price of active residential listings at the end of each month.

### Filters Used

ZIP: Newport, VT 05855  
 Property Type:  
 Condo/Townhouse/Apt, Single  
 Family Residence

Month/ Year	Price	% Chg.
Jan '19	\$190K	17.2%
Jan '18	\$162K	17.4%
Jan '17	\$138K	-5.9%



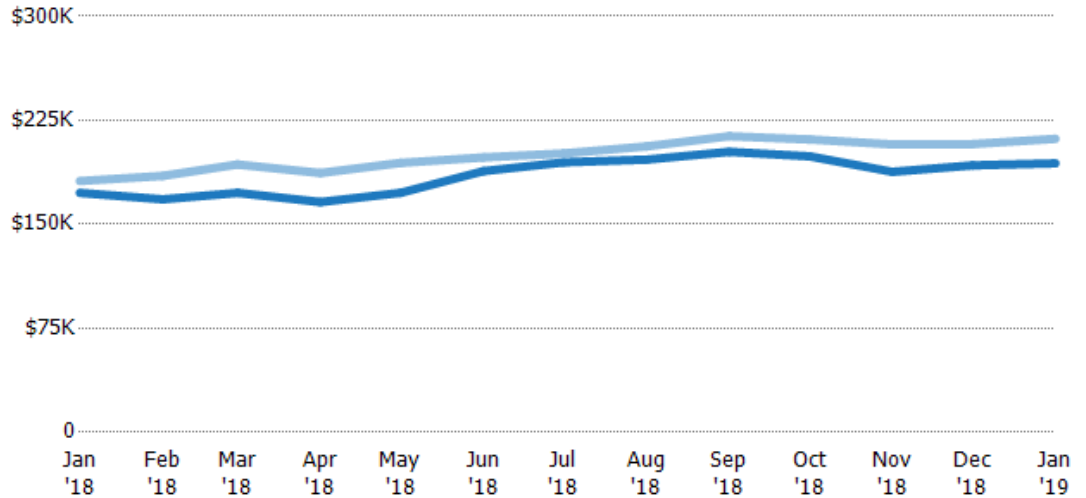
Current Year	\$162K	\$162K	\$181K	\$169K	\$170K	\$198K	\$199K	\$199K	\$220K	\$200K	\$190K	\$190K	\$190K
Prior Year	\$138K	\$150K	\$136K	\$150K	\$175K	\$189K	\$191K	\$189K	\$177K	\$170K	\$169K	\$169K	\$162K
Percent Change from Prior Year	17%	8%	33%	13%	-3%	5%	4%	6%	24%	18%	12%	12%	17%

## Average Listing Price vs Average Est Value

The average listing price as a percentage of the average AVM or RVM® valuation estimate for active listings each month.

### Filters Used

ZIP: Newport, VT 05855  
 Property Type:  
 Condo/Townhouse/Apt, Single  
 Family Residence



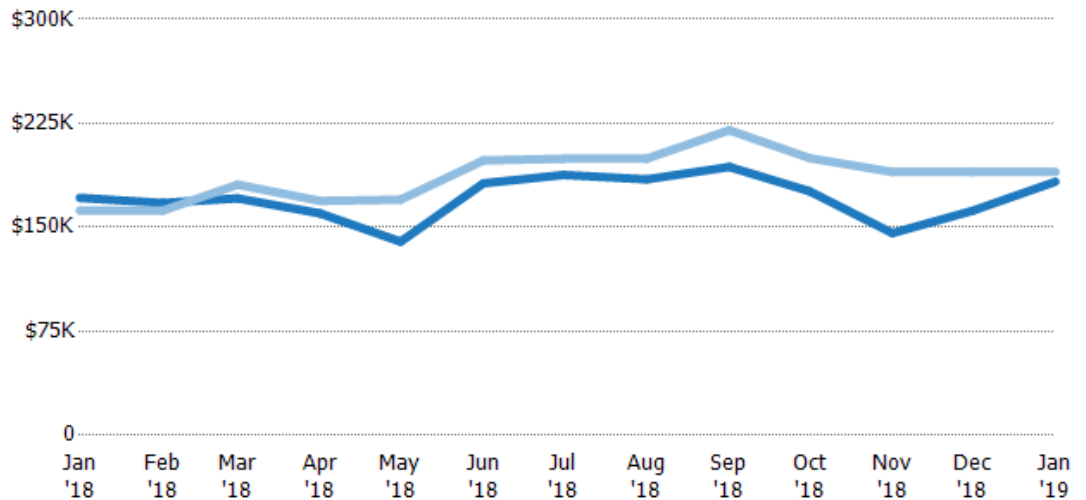
Avg Est Value	\$173K	\$168K	\$173K	\$166K	\$173K	\$188K	\$195K	\$197K	\$202K	\$199K	\$188K	\$192K	\$194K
Avg Listing Price	\$181K	\$185K	\$193K	\$187K	\$194K	\$198K	\$201K	\$206K	\$214K	\$211K	\$208K	\$208K	\$212K
Avg Listing Price as a % of Avg Est Value	105%	110%	112%	113%	113%	105%	103%	105%	106%	106%	111%	108%	109%

## Median Listing Price vs Median Est Value

The median listing price as a percentage of the median AVM or RVM® valuation estimate for active listings each month.

### Filters Used

ZIP: Newport, VT 05855  
 Property Type:  
 Condo/Townhouse/Apt, Single  
 Family Residence



Median Est Value	\$171K	\$168K	\$171K	\$160K	\$140K	\$182K	\$188K	\$185K	\$194K	\$176K	\$146K	\$162K	\$183K
Median Listing Price	\$162K	\$162K	\$181K	\$169K	\$170K	\$198K	\$199K	\$199K	\$220K	\$200K	\$190K	\$190K	\$190K
Med Listing Price as a % of Med Est Value	95%	97%	106%	106%	122%	109%	106%	108%	114%	114%	130%	117%	104%

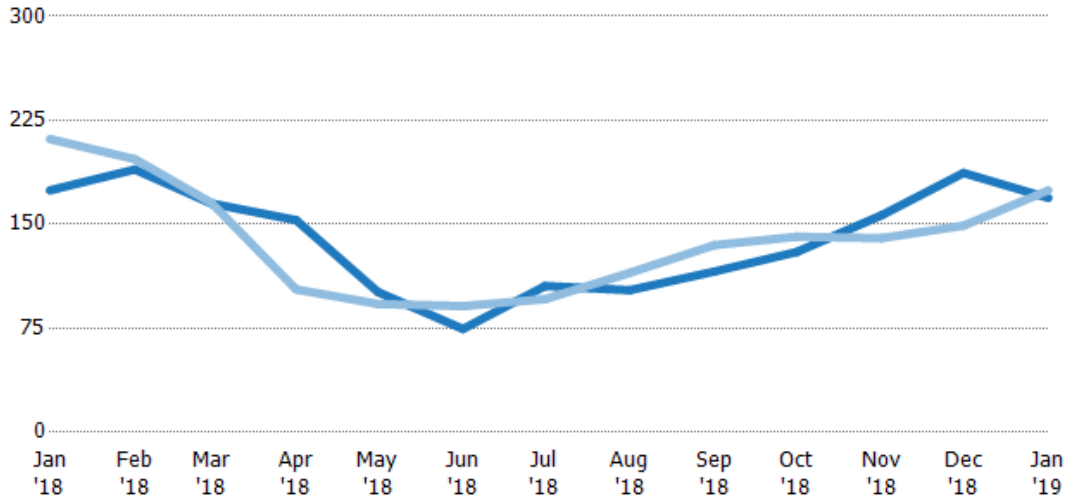
## Median Days in RPR

The median number of days between when residential properties are first displayed as active listings in RPR and when accepted offers have been noted in RPR.

### Filters Used

ZIP: Newport, VT 05855  
 Property Type:  
 Condo/Townhouse/Apt, Single  
 Family Residence

Month/Year	Days	% Chg.
Jan '19	169	-3.2%
Jan '18	175	-17.5%
Jan '17	212	-2.1%



	Jan '18	Feb '18	Mar '18	Apr '18	May '18	Jun '18	Jul '18	Aug '18	Sep '18	Oct '18	Nov '18	Dec '18	Jan '19
Current Year	175	190	165	153	101	74.5	106	103	116	130	157	187	169
Prior Year	212	197	166	103	92.5	91	96	115	135	141	140	149	175
Percent Change from Prior Year	-17%	-4%	0%	49%	9%	-18%	10%	-11%	-14%	-8%	12%	26%	-3%

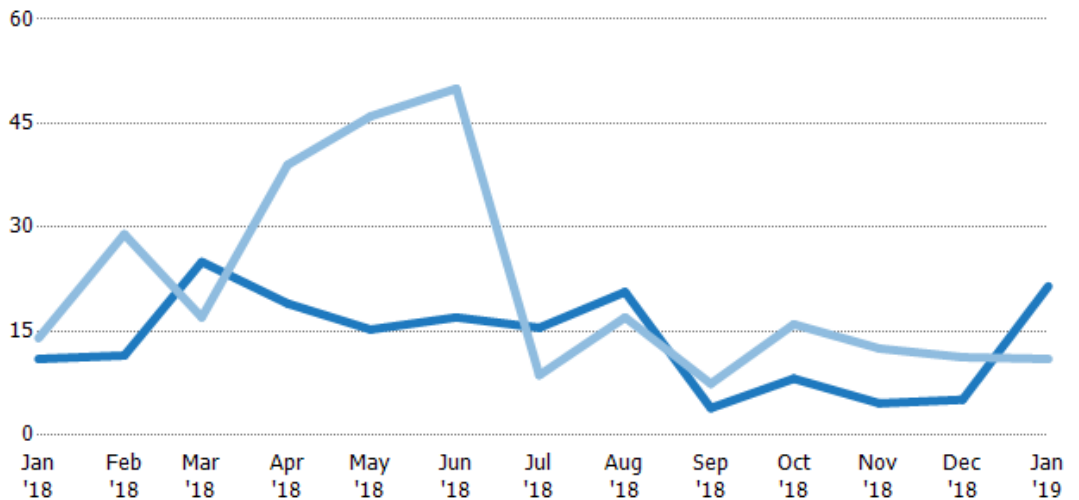
## Months of Inventory

The number of months it would take to exhaust active listings at the current sales rate.

### Filters Used

ZIP: Newport, VT 05855  
 Property Type:  
 Condo/Townhouse/Apt, Single  
 Family Residence

Month/Year	Months	% Chg.
Jan '19	21.5	95.5%
Jan '18	11	-21.4%
Jan '17	14	-22.6%



	Jan '18	Feb '18	Mar '18	Apr '18	May '18	Jun '18	Jul '18	Aug '18	Sep '18	Oct '18	Nov '18	Dec '18	Jan '19
Current Year	11	11.5	25	19	15.3	17	15.5	20.7	3.92	8.17	4.6	5.13	21.5
Prior Year	14	29	17	39	46	50	8.67	17	7.43	16	12.5	11.3	11
Percent Change from Prior Year	-21%	-60%	47%	-51%	-67%	-66%	79%	22%	-47%	-49%	-63%	-54%	95%

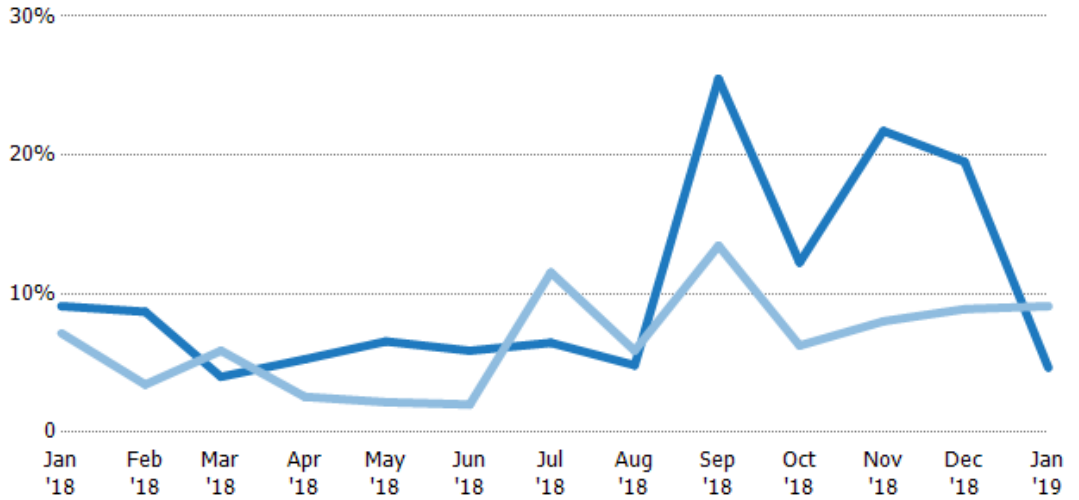
## Absorption Rate

The percentage of inventory sold per month.

### Filters Used

ZIP: Newport, VT 05855  
 Property Type:  
 Condo/Townhouse/Apt, Single  
 Family Residence

Month/ Year	Rate	Chg.
Jan '19	5%	4.4%
Jan '18	9%	-2%
Jan '17	7%	29.3%



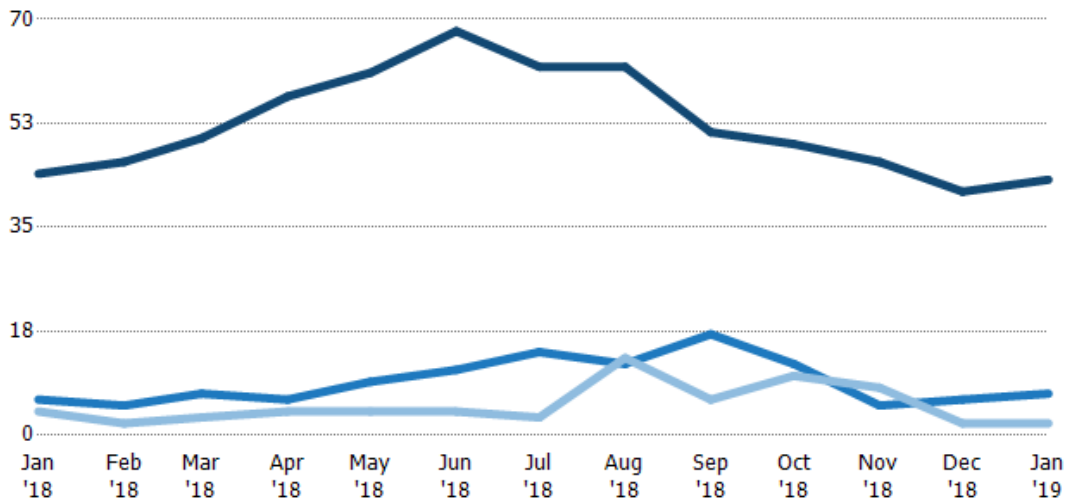
Current Year	9%	9%	4%	5%	7%	6%	6%	5%	25%	12%	22%	20%	5%
Prior Year	7%	3%	6%	3%	2%	2%	12%	6%	13%	6%	8%	9%	9%
Change from Prior Year	-2%	-5%	2%	-3%	-4%	-4%	5%	1%	-12%	-6%	-14%	-11%	4%

## Active/Pending/Sold Units

The number of residential properties that were Active, Pending and Sold each month.

### Filters Used

ZIP: Newport, VT 05855  
 Property Type:  
 Condo/Townhouse/Apt, Single  
 Family Residence



Active	44	46	50	57	61	68	62	62	51	49	46	41	43
Pending	6	5	7	6	9	11	14	12	17	12	5	6	7
Sold	4	2	3	4	4	4	3	13	6	10	8	2	2

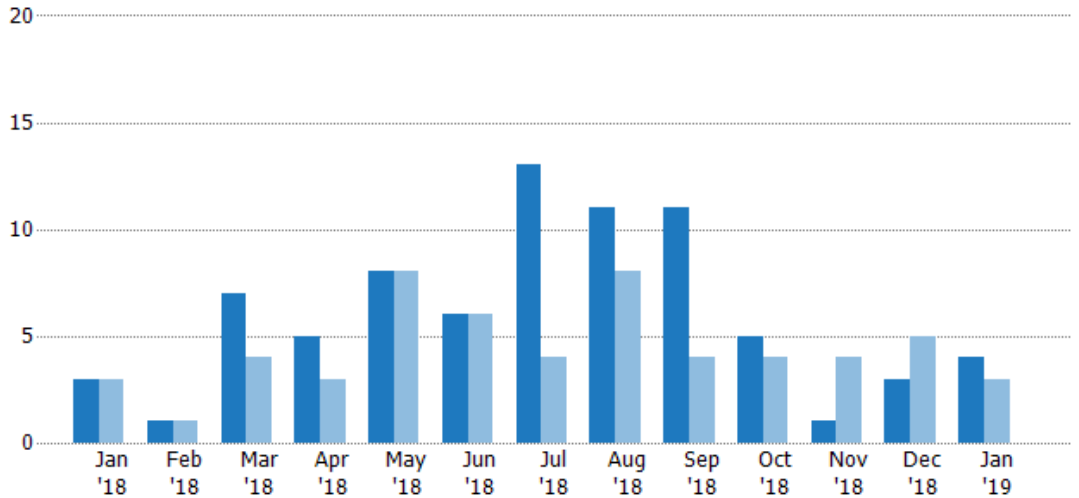
## New Pending Sales

The number of residential properties with accepted offers that were added each month.

### Filters Used

ZIP: Newport, VT 05855  
 Property Type:  
 Condo/Townhouse/Apt, Single  
 Family Residence

Month/ Year	Count	% Chg.
Jan '19	4	33.3%
Jan '18	3	0%
Jan '17	3	-66.7%



Current Year	3	1	7	5	8	6	13	11	11	5	1	3	4
Prior Year	3	1	4	3	8	6	4	8	4	4	4	5	3
Percent Change from Prior Year	0%	0%	75%	67%	0%	0%	225%	38%	175%	25%	-75%	-40%	33%

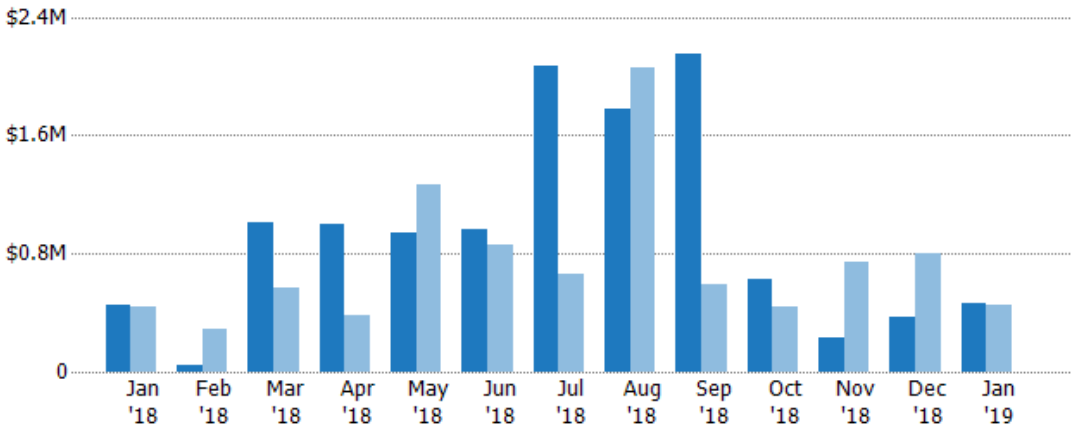
## New Pending Sales Volume

The sum of the sales price of residential properties with accepted offers that were added each month.

### Filters Used

ZIP: Newport, VT 05855  
 Property Type:  
 Condo/Townhouse/Apt, Single  
 Family Residence

Month/ Year	Volume	% Chg.
Jan '19	\$458K	0.7%
Jan '18	\$455K	3.9%
Jan '17	\$438K	-63.6%



Current Year	\$455K	\$39.5K	\$1.01M	\$998K	\$942K	\$965K	\$2.07M	\$1.77M	\$2.15M	\$625K	\$235K	\$375K	\$458K
Prior Year	\$438K	\$290K	\$569K	\$383K	\$1.27M	\$855K	\$660K	\$2.06M	\$597K	\$445K	\$744K	\$805K	\$455K
Percent Change from Prior Year	4%	-86%	78%	161%	-26%	13%	214%	-14%	261%	40%	-68%	-53%	1%



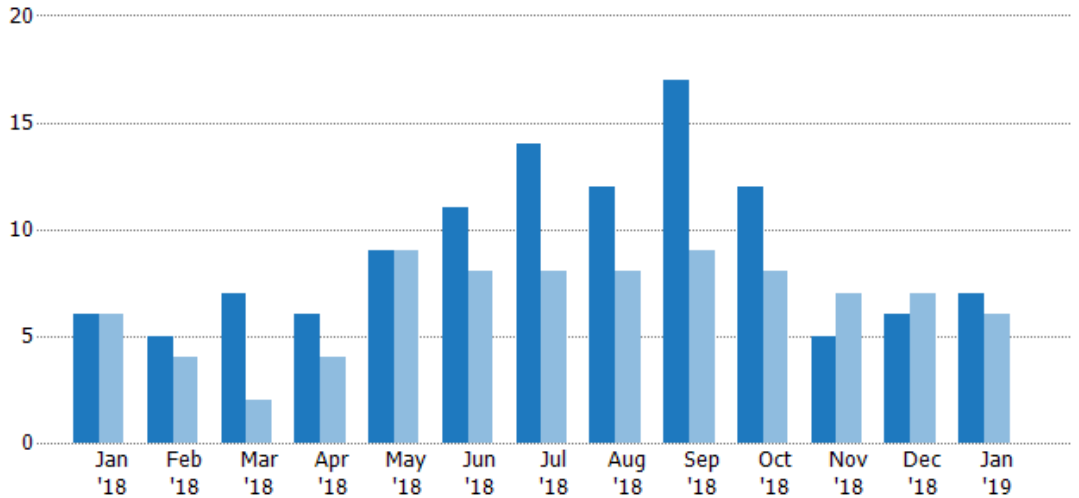
## Pending Sales

The number of residential properties with accepted offers that were available at the end each month.

### Filters Used

ZIP: Newport, VT 05855  
 Property Type:  
 Condo/Townhouse/Apt, Single  
 Family Residence

Month/ Year	Count	% Chg.
Jan '19	7	16.7%
Jan '18	6	0%
Jan '17	6	-33.3%



	Jan '18	Feb '18	Mar '18	Apr '18	May '18	Jun '18	Jul '18	Aug '18	Sep '18	Oct '18	Nov '18	Dec '18	Jan '19
Current Year	6	5	7	6	9	11	14	12	17	12	5	6	7
Prior Year	6	4	2	4	9	8	8	8	9	8	7	7	6
Percent Change from Prior Year	0%	25%	250%	50%	0%	38%	75%	50%	89%	50%	-29%	-14%	17%

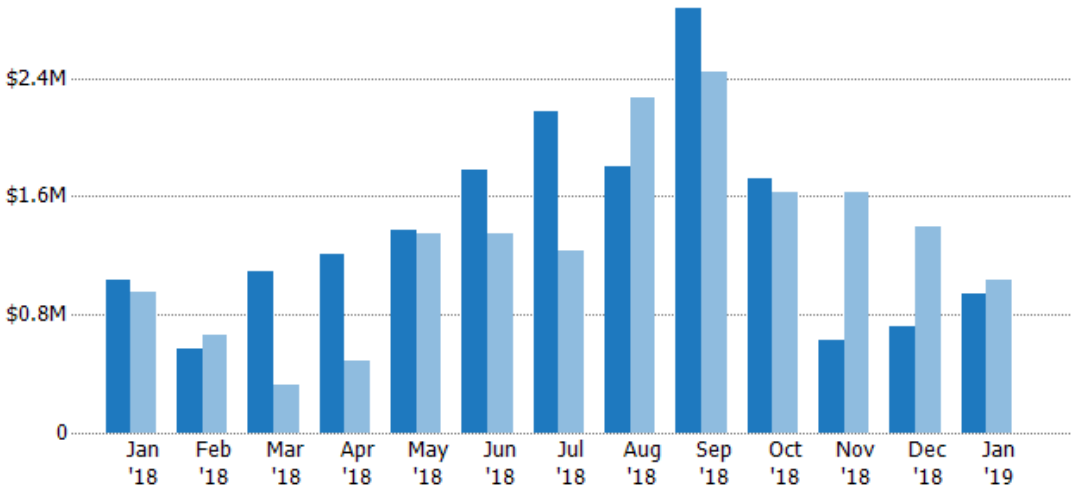
## Pending Sales Volume

The sum of the sales price of residential properties with accepted offers that were available at the end of each month.

### Filters Used

ZIP: Newport, VT 05855  
 Property Type:  
 Condo/Townhouse/Apt, Single  
 Family Residence

Month/ Year	Volume	% Chg.
Jan '19	\$941K	-8.6%
Jan '18	\$1.03M	7.8%
Jan '17	\$955K	-50.1%



	Jan '18	Feb '18	Mar '18	Apr '18	May '18	Jun '18	Jul '18	Aug '18	Sep '18	Oct '18	Nov '18	Dec '18	Jan '19
Current Year	\$1.03M	\$573K	\$1.09M	\$1.21M	\$1.37M	\$1.78M	\$2.18M	\$1.8M	\$2.87M	\$1.72M	\$626K	\$719K	\$941K
Prior Year	\$955K	\$657K	\$329K	\$493K	\$1.35M	\$1.35M	\$1.23M	\$2.27M	\$2.44M	\$1.63M	\$1.63M	\$1.39M	\$1.03M
Percent Change from Prior Year	8%	-13%	233%	146%	2%	32%	77%	-20%	18%	5%	-62%	-48%	-9%

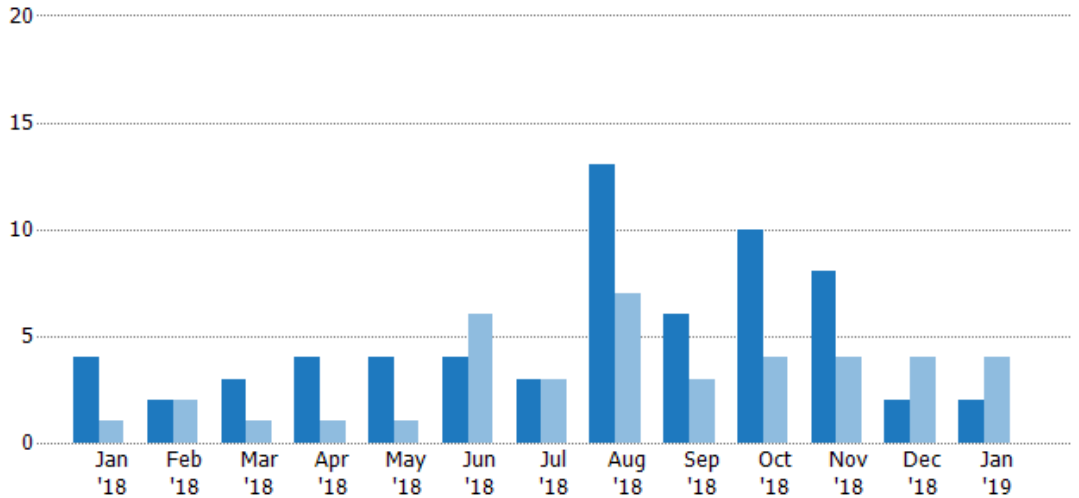
## Closed Sales

The total number of residential properties sold each month.

### Filters Used

ZIP: Newport, VT 05855  
 Property Type:  
 Condo/Townhouse/Apt, Single  
 Family Residence

Month/ Year	Count	% Chg.
Jan '19	2	-50%
Jan '18	4	300%
Jan '17	1	200%



Current Year	4	2	3	4	4	4	3	13	6	10	8	2	2
Prior Year	1	2	1	1	1	6	3	7	3	4	4	4	4
Percent Change from Prior Year	300%	0%	200%	300%	300%	-33%	0%	86%	100%	150%	100%	-50%	-50%

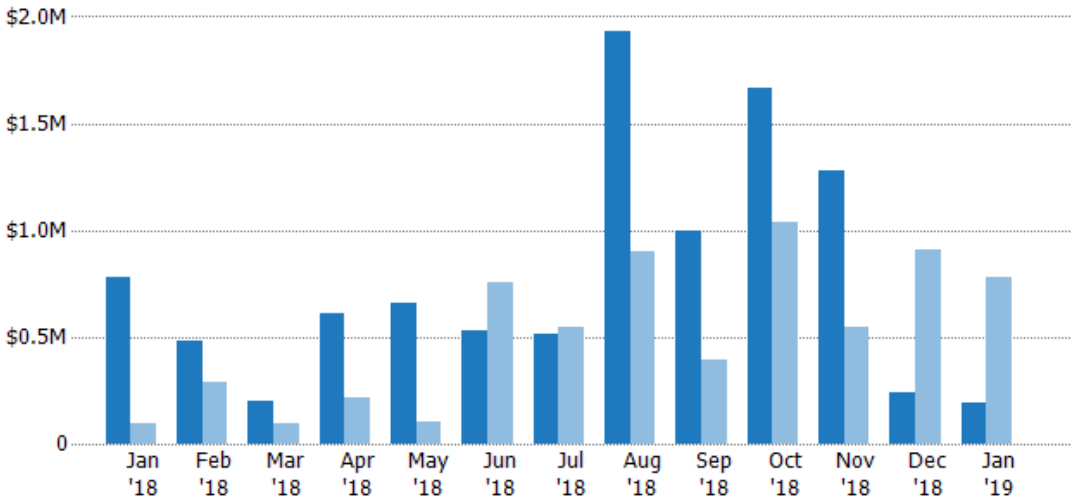
## Closed Sales Volume

The sum of the sales price of residential properties sold each month.

### Filters Used

ZIP: Newport, VT 05855  
 Property Type:  
 Condo/Townhouse/Apt, Single  
 Family Residence

Month/ Year	Volume	% Chg.
Jan '19	\$191K	-75.4%
Jan '18	\$778K	702.4%
Jan '17	\$96.9K	259.1%



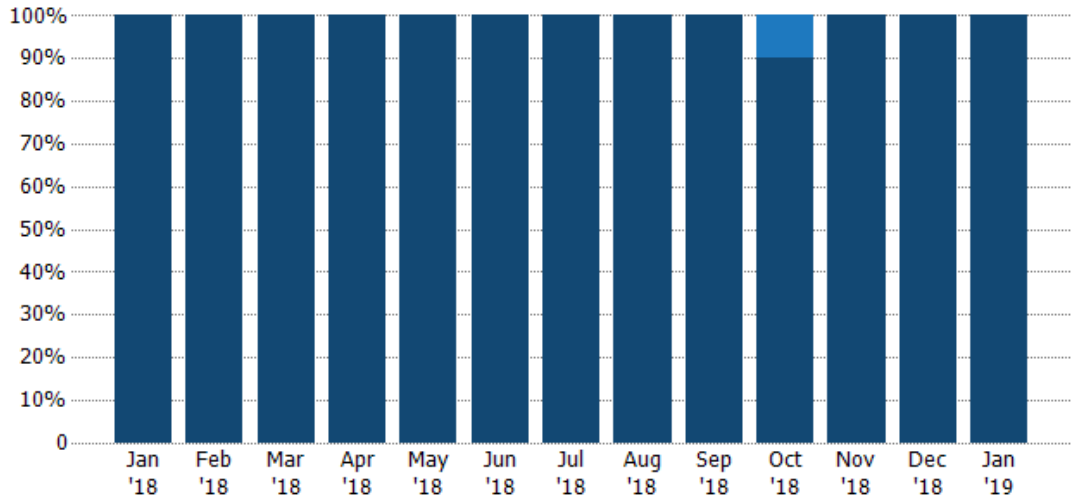
Current Year	\$778K	\$480K	\$203K	\$611K	\$660K	\$532K	\$511K	\$1.93M	\$995K	\$1.67M	\$1.28M	\$240K	\$191K
Prior Year	\$96.9K	\$288K	\$93.8K	\$217K	\$107K	\$752K	\$543K	\$899K	\$396K	\$1.03M	\$547K	\$906K	\$778K
Percent Change from Prior Year	702%	67%	116%	182%	517%	-29%	-6%	115%	151%	61%	134%	-74%	-75%

## Closed Sales by Property Type

The percentage of residential properties sold each month by property type.

**Filters Used**

ZIP: Newport, VT 05855  
 Property Type:  
 Condo/Townhouse/Apt, Single  
 Family Residence



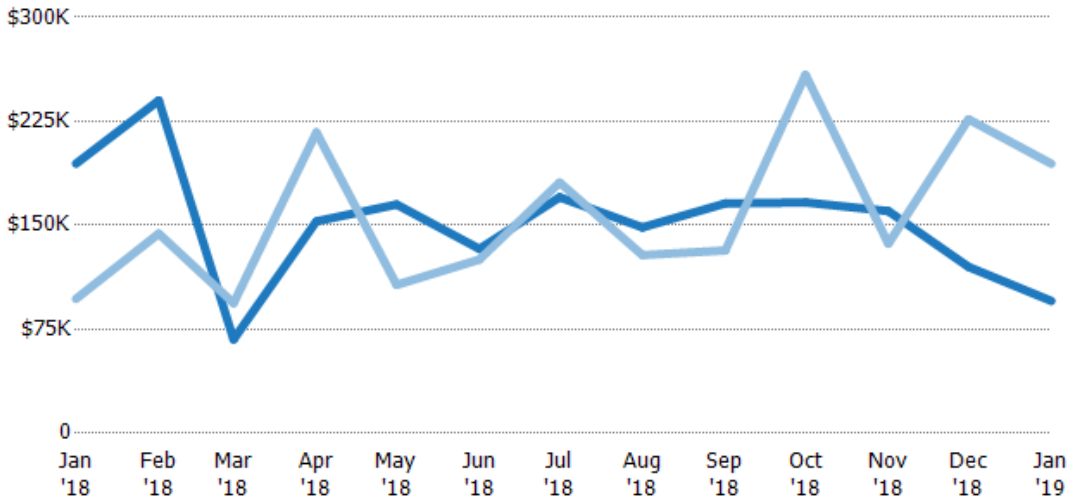
Condo/Townhouse	-	-	-	-	-	-	-	-	-	10%	-	-	-
Single Family Residence	100%	100%	100%	100%	100%	100%	100%	100%	100%	90%	100%	100%	100%

## Average Sales Price

The average sales price of the residential properties sold each month.

**Filters Used**

ZIP: Newport, VT 05855  
 Property Type:  
 Condo/Townhouse/Apt, Single  
 Family Residence



Current Year	\$194K	\$240K	\$67.7K	\$153K	\$165K	\$133K	\$170K	\$148K	\$166K	\$167K	\$160K	\$120K	\$95.5K
Prior Year	\$96.9K	\$144K	\$93.8K	\$217K	\$107K	\$125K	\$181K	\$128K	\$132K	\$259K	\$137K	\$226K	\$194K
Percent Change from Prior Year	101%	67%	-28%	-30%	54%	6%	-6%	16%	26%	-36%	17%	-47%	-51%

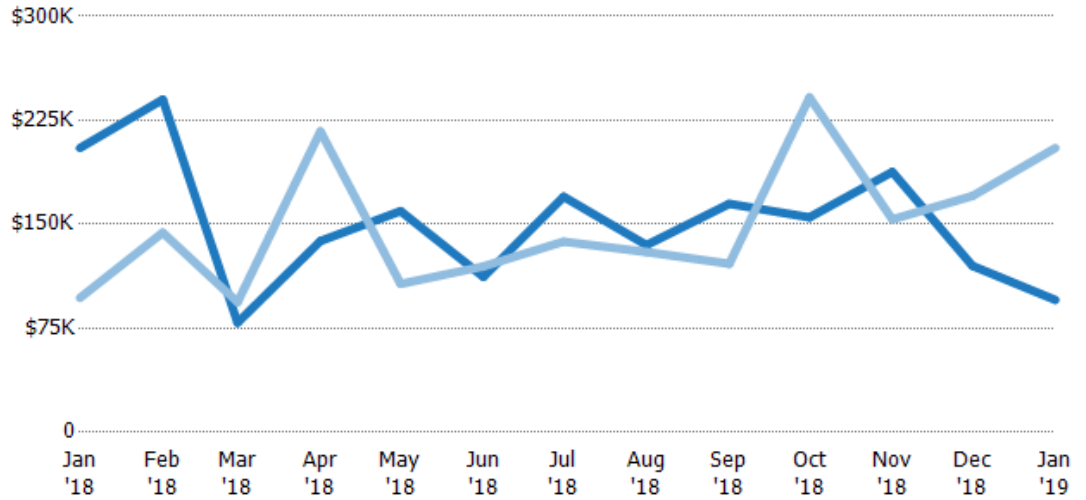
## Median Sales Price

The median sales price of the residential properties sold each month.

### Filters Used

ZIP: Newport, VT 05855  
 Property Type:  
 Condo/Townhouse/Apt, Single  
 Family Residence

Month/ Year	Price	% Chg.
Jan '19	\$95.5K	-53.4%
Jan '18	\$205K	111.6%
Jan '17	\$96.9K	31.1%



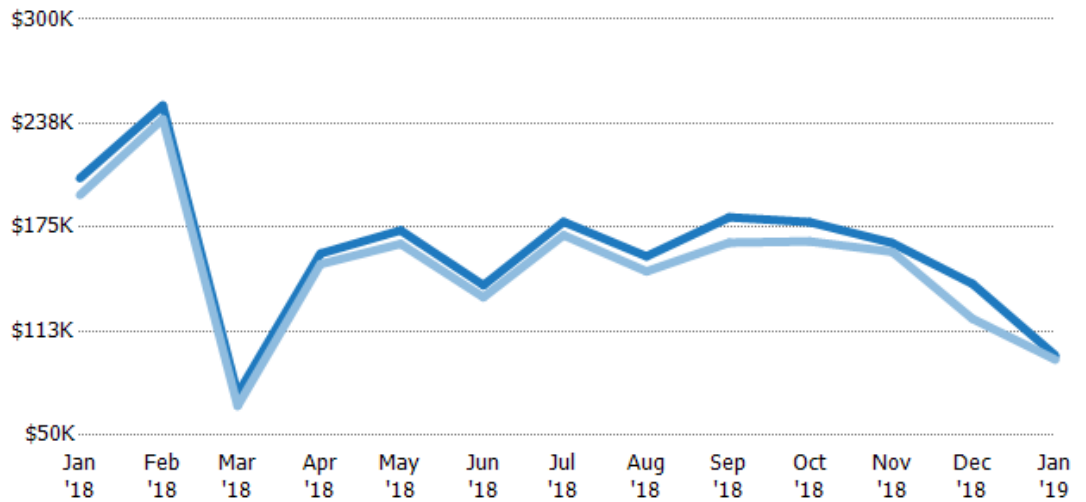
Current Year	\$205K	\$240K	\$79K	\$138K	\$160K	\$112K	\$170K	\$135K	\$165K	\$155K	\$188K	\$120K	\$95.5K
Prior Year	\$96.9K	\$144K	\$93.8K	\$217K	\$107K	\$120K	\$138K	\$130K	\$122K	\$242K	\$154K	\$170K	\$205K
Percent Change from Prior Year	112%	67%	-16%	-36%	49%	-6%	24%	4%	36%	-36%	22%	-30%	-53%

## Average Sales Price vs Average Listing Price

The average sales price as a percentage of the average listing price for properties sold each month.

### Filters Used

ZIP: Newport, VT 05855  
 Property Type:  
 Condo/Townhouse/Apt, Single  
 Family Residence



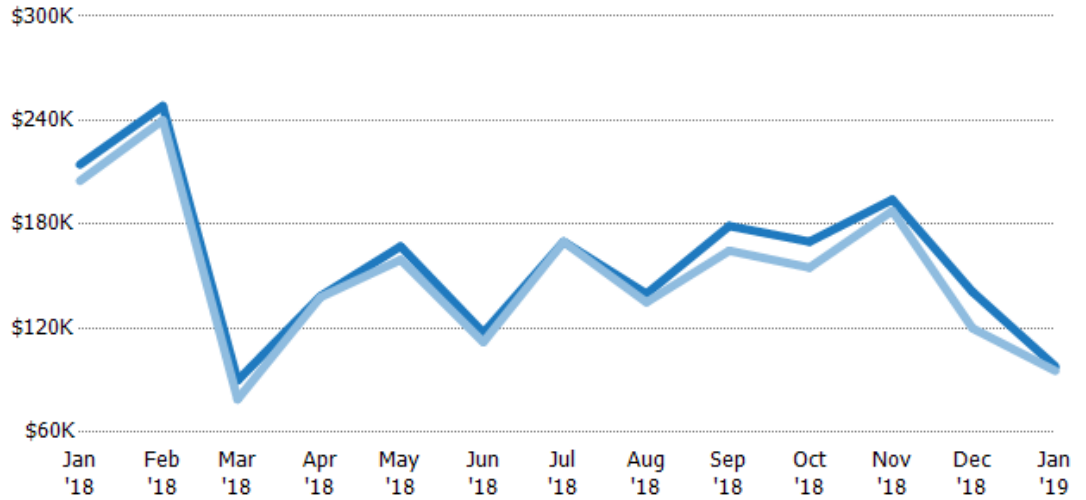
Avg List Price	\$204K	\$248K	\$74.8K	\$159K	\$173K	\$140K	\$178K	\$158K	\$181K	\$178K	\$166K	\$141K	\$98K
Avg Sales Price	\$194K	\$240K	\$67.7K	\$153K	\$165K	\$133K	\$170K	\$148K	\$166K	\$167K	\$160K	\$120K	\$95.5K
Avg Sales Price as a % of Avg List Price	95%	97%	90%	96%	95%	95%	95%	94%	92%	93%	97%	85%	97%

## Median Sales Price vs Median Listing Price

The median sales price as a percentage of the median listing price for properties sold each month.

### Filters Used

ZIP: Newport, VT 05855  
 Property Type:  
 Condo/Townhouse/Apt, Single  
 Family Residence



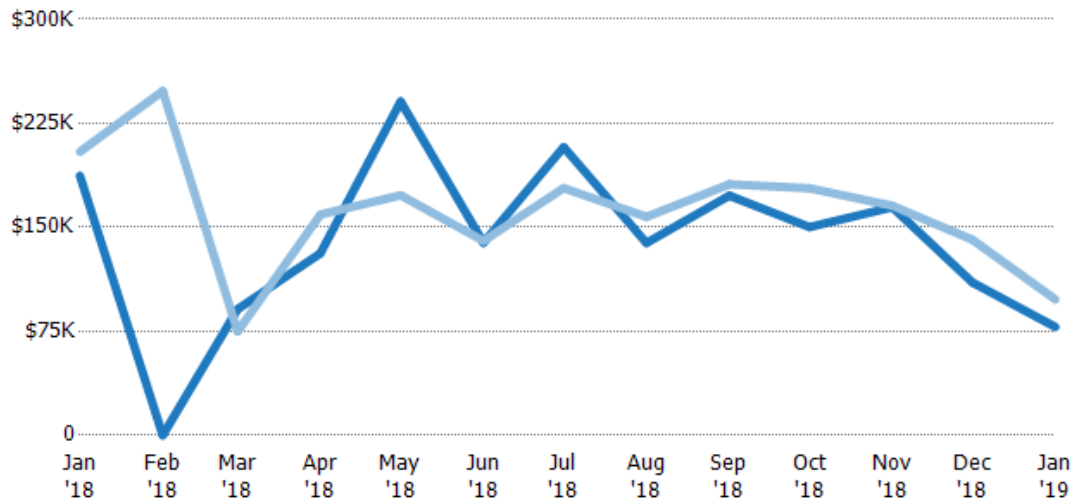
Median List Price	\$214K	\$248K	\$89.9K	\$138K	\$167K	\$117K	\$170K	\$140K	\$179K	\$170K	\$194K	\$141K	\$98K
Median Sales Price	\$205K	\$240K	\$79K	\$138K	\$160K	\$112K	\$170K	\$135K	\$165K	\$155K	\$188K	\$120K	\$95.5K
Med Sales Price as a % of Med List Price	96%	97%	88%	100%	95%	95%	100%	96%	92%	91%	97%	85%	97%

## Average Sales Price vs Average Est Value

The average sales price as a percentage of the average AVM or RVM® valuation estimate for properties sold each month.

### Filters Used

ZIP: Newport, VT 05855  
 Property Type:  
 Condo/Townhouse/Apt, Single  
 Family Residence



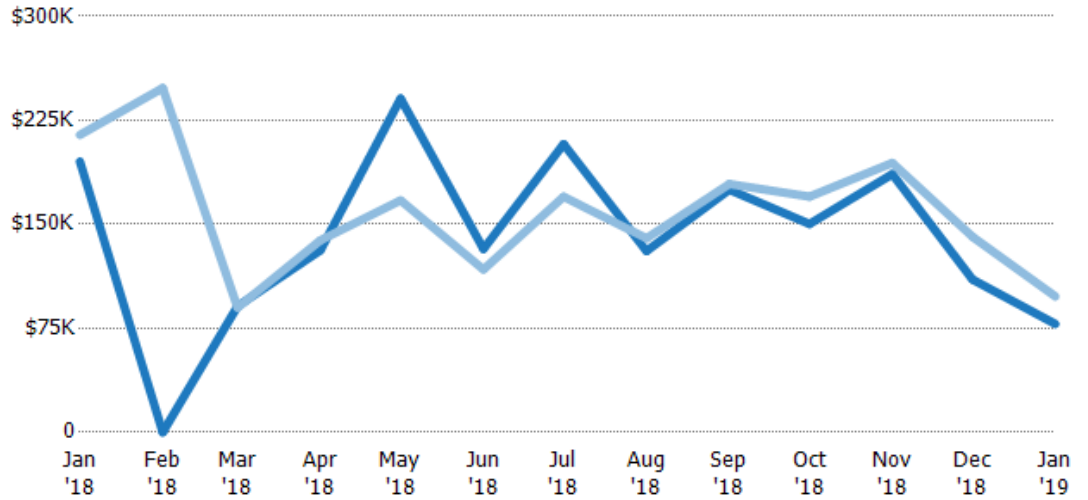
Avg Est Value	\$187K	\$0	\$91K	\$131K	\$241K	\$139K	\$208K	\$139K	\$173K	\$150K	\$164K	\$110K	\$78.1K
Avg Sales Price	\$204K	\$248K	\$74.8K	\$159K	\$173K	\$140K	\$178K	\$158K	\$181K	\$178K	\$166K	\$141K	\$98K
Avg Sales Price as a % of Avg Est Value	109%	100%	82%	121%	72%	101%	86%	114%	105%	119%	101%	128%	125%

## Median Sales Price vs Median Est Value

The median sales price as a percent of the median AVM or RVM® valuation estimate for properties sold each month.

### Filters Used

ZIP: Newport, VT 05855  
 Property Type:  
 Condo/Townhouse/Apt, Single  
 Family Residence



Median Est Value	\$195K	\$0	\$91K	\$131K	\$241K	\$132K	\$208K	\$131K	\$175K	\$150K	\$186K	\$110K	\$78.1K
Median Sales Price	\$214K	\$248K	\$89.9K	\$138K	\$167K	\$117K	\$170K	\$140K	\$179K	\$170K	\$194K	\$141K	\$98K
Med Sales Price as a % of Med Est Value	110%	100%	99%	105%	69%	89%	82%	107%	102%	113%	104%	128%	125%