

## Summary of Key Listing and Sales Metrics

A summary of the key metrics selected to be included in the report. MLS sources where licensed.

Key Metrics	Jan 2019	Jan 2018	+ / -	YTD 2019	YTD 2018	+ / -
<b>Listing Activity Charts Metrics</b>						
New Listing Count	25	31	-19.4%	441	431	+2.3%
New Listing Volume	\$10,191,299	\$7,503,900	+35.8%	\$144,167,445	\$138,066,689	+4.4%
Active Listing Count	221	259	-14.7%	N/A	N/A	
Active Listing Volume	\$96,681,507	\$87,553,295	+10.4%	N/A	N/A	
Average Listing Price	\$437,473	\$338,044	+29.4%	\$371,762	\$319,328	+16.4%
Median Listing Price	\$299,900	\$230,000	+30.4%	\$255,494	\$229,893	+11.1%
Median Days in RPR	157	180	-12.8%	161.33	172.55	-6.5%
Months of Inventory	13	10.4	+25.5%	17	21.6	-21.2%
Absorption Rate	7.69%	9.65%	-2%	5.88%	4.63%	+1.2%
<b>Sales Activity Charts Metrics</b>						
New Pending Sales Count	29	26	+11.5%	287	270	+6.3%
New Pending Sales Volume	\$6,448,799	\$6,347,200	+1.6%	\$66,248,884	\$73,815,766	-10.3%
Pending Sales Count	45	27	+66.7%	N/A	N/A	
Pending Sales Volume	\$10,217,799	\$7,137,200	+43.2%	N/A	N/A	
Closed Sales Count	13	13	+/-	227	234	-3%
Closed Sales Volume	\$2,339,500	\$2,156,900	+8.5%	\$49,371,143	\$61,829,701	-20.1%
Average Sales Price	\$179,962	\$165,915	+8.5%	\$217,494	\$264,229	-17.7%
Median Sales Price	\$210,000	\$163,900	+28.1%	\$194,095	\$202,043	-3.9%

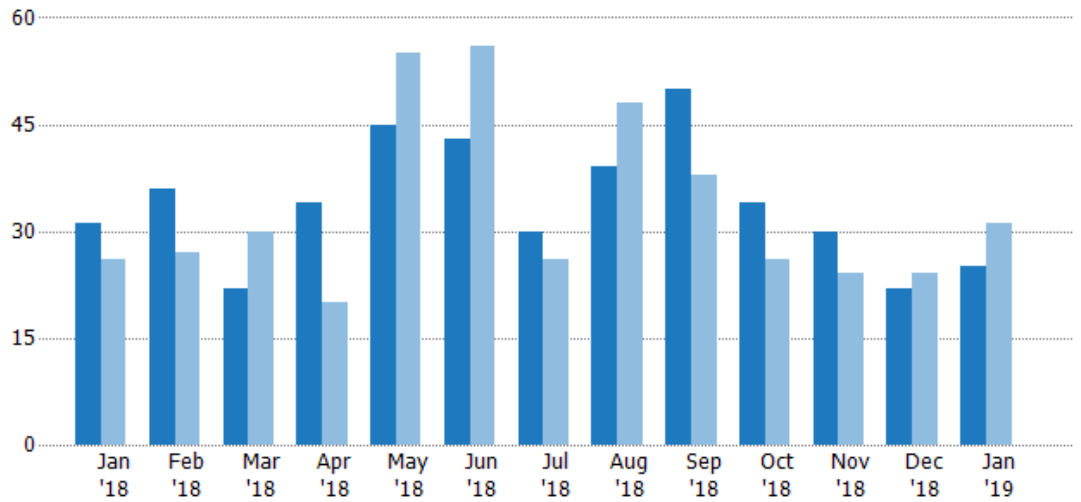
## New Listings

The number of new residential listings that were added each month.

### Filters Used

ZIP: East Dover, VT 05341, South Newfane, VT 05351, Wardsboro, VT 05355, West Dover, VT 05356, Wilmington, VT 05363  
 Property Type: Condo/Townhouse/Apt, Single Family Residence

Month/Year	Count	% Chg.
Jan '19	25	-19.4%
Jan '18	31	19.2%
Jan '17	26	15.4%



Current Year	31	36	22	34	45	43	30	39	50	34	30	22	25
Prior Year	26	27	30	20	55	56	26	48	38	26	24	24	31
Percent Change from Prior Year	19%	33%	-27%	70%	-18%	-23%	15%	-19%	32%	31%	25%	-8%	-19%

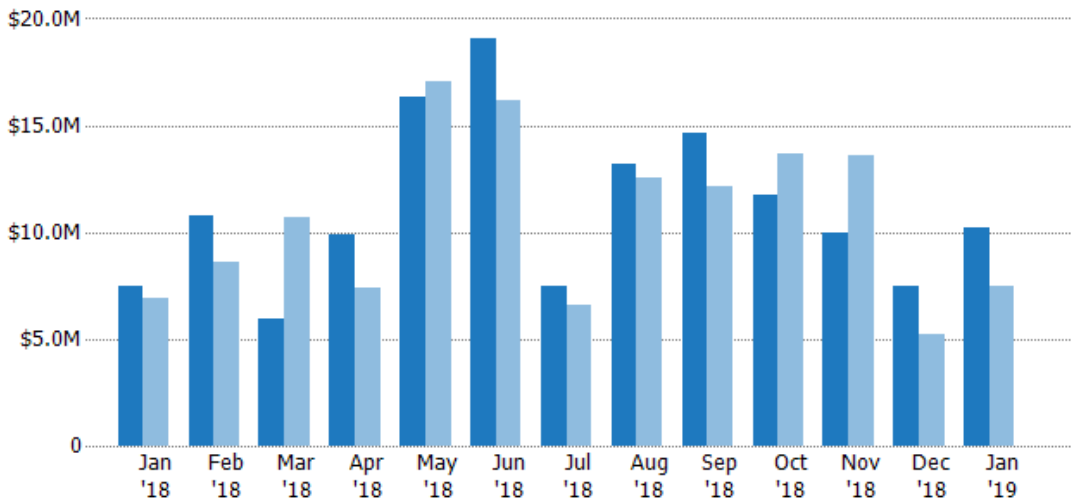
## New Listing Volume

The sum of the listing price of residential listings that were added each month.

### Filters Used

ZIP: East Dover, VT 05341, South Newfane, VT 05351, Wardsboro, VT 05355, West Dover, VT 05356, Wilmington, VT 05363  
 Property Type: Condo/Townhouse/Apt, Single Family Residence

Month/Year	Volume	% Chg.
Jan '19	\$10.2M	35.8%
Jan '18	\$7.5M	8.8%
Jan '17	\$6.9M	41.3%



Current Year	\$7.5M	\$10.8M	\$5.92M	\$9.91M	\$16.3M	\$19.1M	\$7.45M	\$13.2M	\$14.7M	\$11.7M	\$9.93M	\$7.49M	\$10.2M
Prior Year	\$6.9M	\$8.59M	\$10.7M	\$7.36M	\$17M	\$16.2M	\$6.6M	\$12.6M	\$12.1M	\$13.7M	\$13.6M	\$5.26M	\$7.5M
Percent Change from Prior Year	9%	26%	-44%	35%	-4%	18%	13%	5%	21%	-15%	-27%	42%	36%

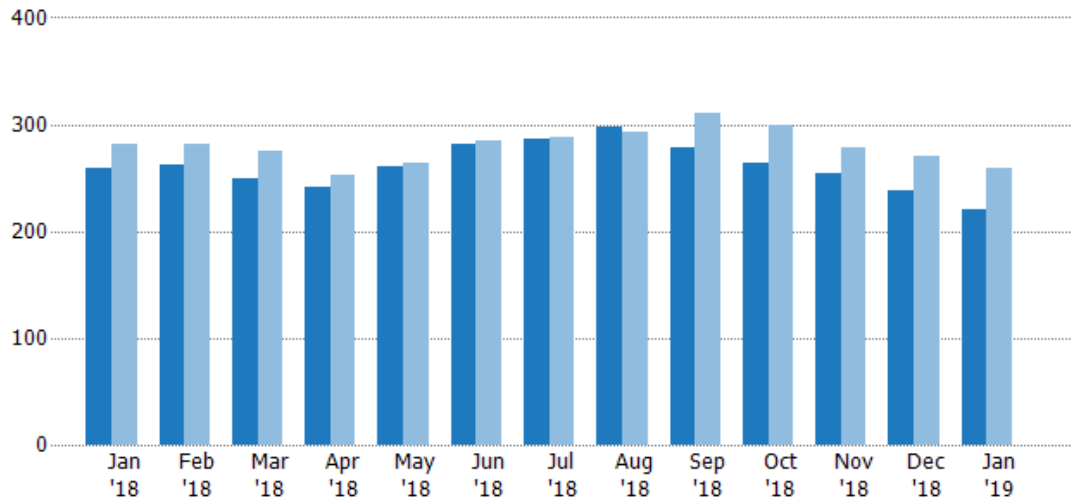
## Active Listings

The number of active residential listings at the end of each month.

### Filters Used

ZIP: East Dover, VT 05341, South Newfane, VT 05351, Wardsboro, VT 05355, West Dover, VT 05356, Wilmington, VT 05363

Property Type:  
Condo/Townhouse/Apt, Single Family Residence



	Jan '18	Feb '18	Mar '18	Apr '18	May '18	Jun '18	Jul '18	Aug '18	Sep '18	Oct '18	Nov '18	Dec '18	Jan '19
Current Year	259	262	250	242	261	281	287	298	279	264	254	238	221
Prior Year	282	282	275	252	264	284	288	292	310	300	278	270	259
Percent Change from Prior Year	-8%	-7%	-9%	-4%	-1%	-1%	0%	2%	-10%	-12%	-9%	-12%	-15%

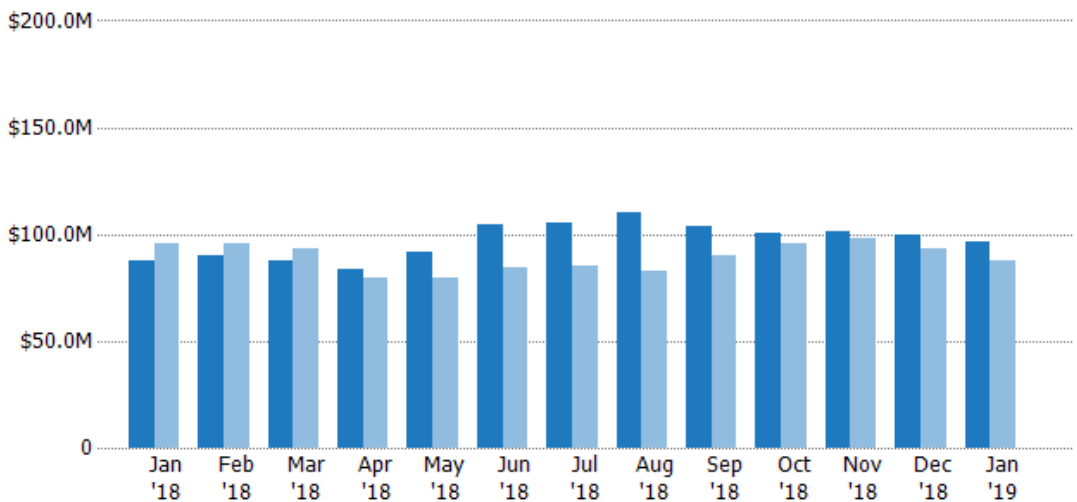
## Active Listing Volume

The sum of the listing price of active residential listings at the end of each month.

### Filters Used

ZIP: East Dover, VT 05341, South Newfane, VT 05351, Wardsboro, VT 05355, West Dover, VT 05356, Wilmington, VT 05363

Property Type:  
Condo/Townhouse/Apt, Single Family Residence



	Jan '18	Feb '18	Mar '18	Apr '18	May '18	Jun '18	Jul '18	Aug '18	Sep '18	Oct '18	Nov '18	Dec '18	Jan '19
Current Year	\$87.6M	\$90.2M	\$87.3M	\$83.3M	\$91.8M	\$105M	\$105M	\$110M	\$104M	\$101M	\$101M	\$99.5M	\$96.7M
Prior Year	\$95.8M	\$96M	\$93M	\$79.5M	\$79.7M	\$84.4M	\$85.4M	\$82.7M	\$89.7M	\$95.7M	\$98.3M	\$93.2M	\$87.6M
Percent Change from Prior Year	-9%	-6%	-6%	5%	15%	24%	23%	33%	16%	5%	3%	7%	10%

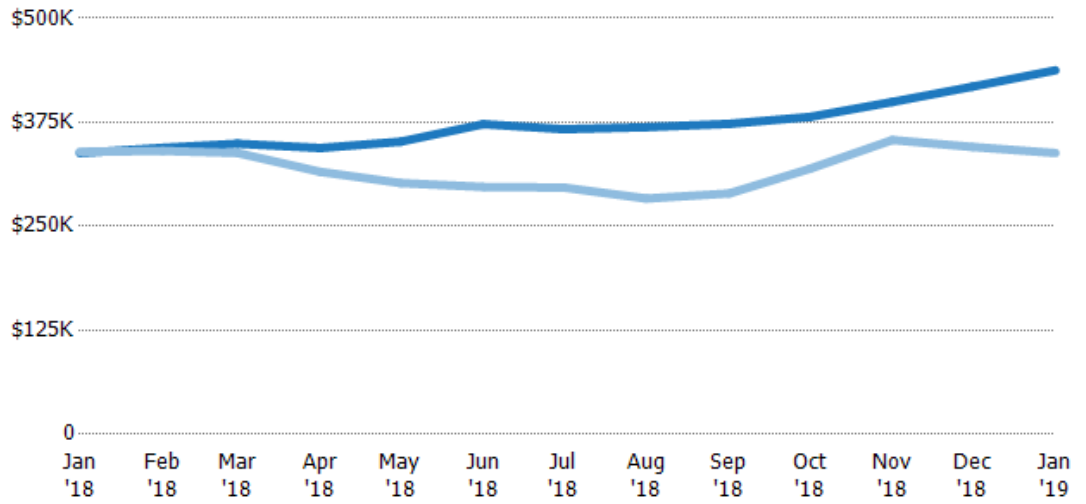
## Average Listing Price

The average listing price of active residential listings at the end of each month.

### Filters Used

ZIP: East Dover, VT 05341, South Newfane, VT 05351, Wardsboro, VT 05355, West Dover, VT 05356, Wilmington, VT 05363  
 Property Type: Condo/Townhouse/Apt, Single Family Residence

Month/Year	Price	% Chg.
Jan '19	\$437K	29.4%
Jan '18	\$338K	-0.5%
Jan '17	\$340K	-15.4%



Current Year	\$338K	\$344K	\$349K	\$344K	\$352K	\$373K	\$367K	\$369K	\$373K	\$381K	\$399K	\$418K	\$437K
Prior Year	\$340K	\$341K	\$338K	\$315K	\$302K	\$297K	\$297K	\$283K	\$289K	\$319K	\$354K	\$345K	\$338K
Percent Change from Prior Year	0%	1%	3%	9%	16%	25%	24%	30%	29%	20%	13%	21%	29%

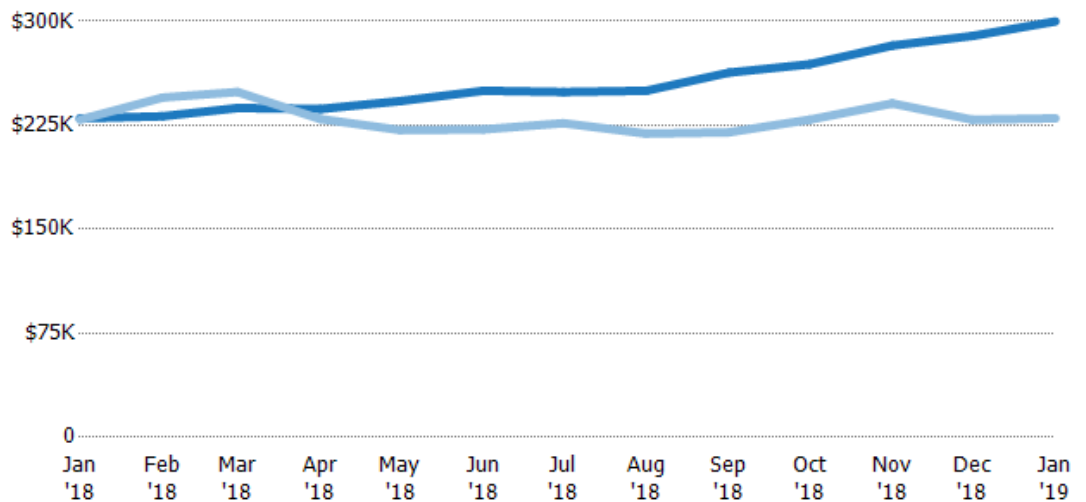
## Median Listing Price

The median listing price of active residential listings at the end of each month.

### Filters Used

ZIP: East Dover, VT 05341, South Newfane, VT 05351, Wardsboro, VT 05355, West Dover, VT 05356, Wilmington, VT 05363  
 Property Type: Condo/Townhouse/Apt, Single Family Residence

Month/Year	Price	% Chg.
Jan '19	\$300K	30.4%
Jan '18	\$230K	0.4%
Jan '17	\$229K	-4.4%



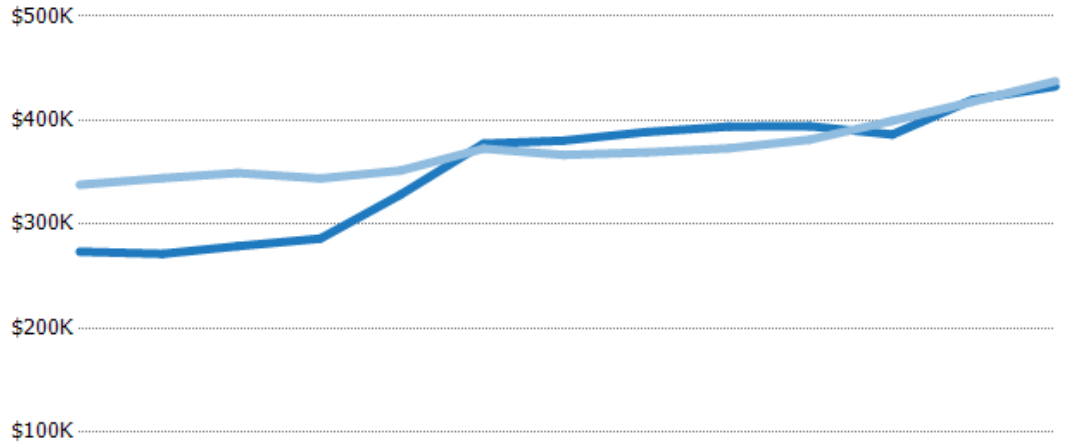
Current Year	\$230K	\$232K	\$237K	\$237K	\$243K	\$250K	\$249K	\$250K	\$263K	\$269K	\$283K	\$289K	\$300K
Prior Year	\$229K	\$245K	\$249K	\$230K	\$222K	\$222K	\$227K	\$219K	\$220K	\$229K	\$241K	\$229K	\$230K
Percent Change from Prior Year	0%	-6%	-5%	3%	9%	13%	10%	14%	20%	17%	17%	26%	30%

## Average Listing Price vs Average Est Value

The average listing price as a percentage of the average AVM or RVM® valuation estimate for active listings each month.

### Filters Used

ZIP: East Dover, VT 05341, South Newfane, VT 05351, Wardsboro, VT 05355, West Dover, VT 05356, Wilmington, VT 05363  
 Property Type: Condo/Townhouse/Apt, Single Family Residence



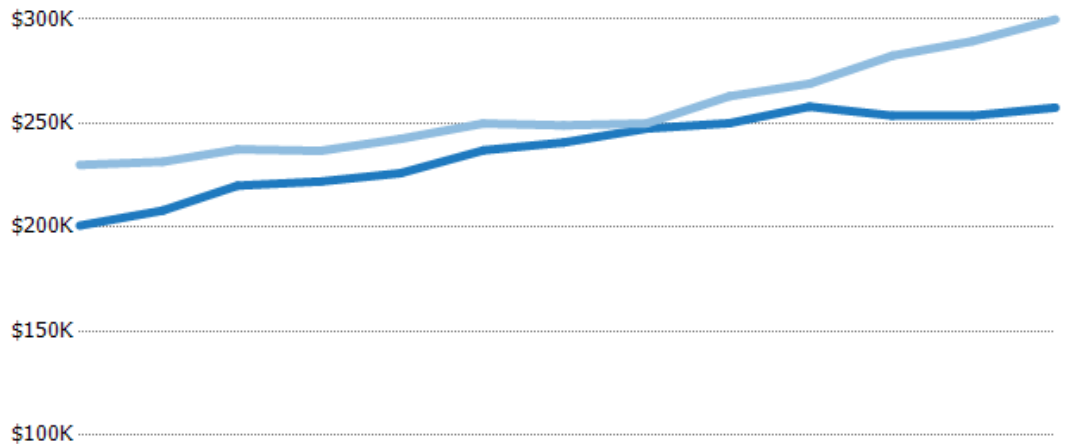
	Jan '18	Feb '18	Mar '18	Apr '18	May '18	Jun '18	Jul '18	Aug '18	Sep '18	Oct '18	Nov '18	Dec '18	Jan '19
Avg Est Value	\$274K	\$272K	\$279K	\$286K	\$329K	\$378K	\$380K	\$389K	\$394K	\$394K	\$386K	\$420K	\$433K
Avg Listing Price	\$338K	\$344K	\$349K	\$344K	\$352K	\$373K	\$367K	\$369K	\$373K	\$381K	\$399K	\$418K	\$437K
Avg Listing Price as a % of Avg Est Value	124%	127%	125%	120%	107%	99%	96%	95%	95%	97%	103%	100%	101%

## Median Listing Price vs Median Est Value

The median listing price as a percentage of the median AVM or RVM® valuation estimate for active listings each month.

### Filters Used

ZIP: East Dover, VT 05341, South Newfane, VT 05351, Wardsboro, VT 05355, West Dover, VT 05356, Wilmington, VT 05363  
 Property Type: Condo/Townhouse/Apt, Single Family Residence



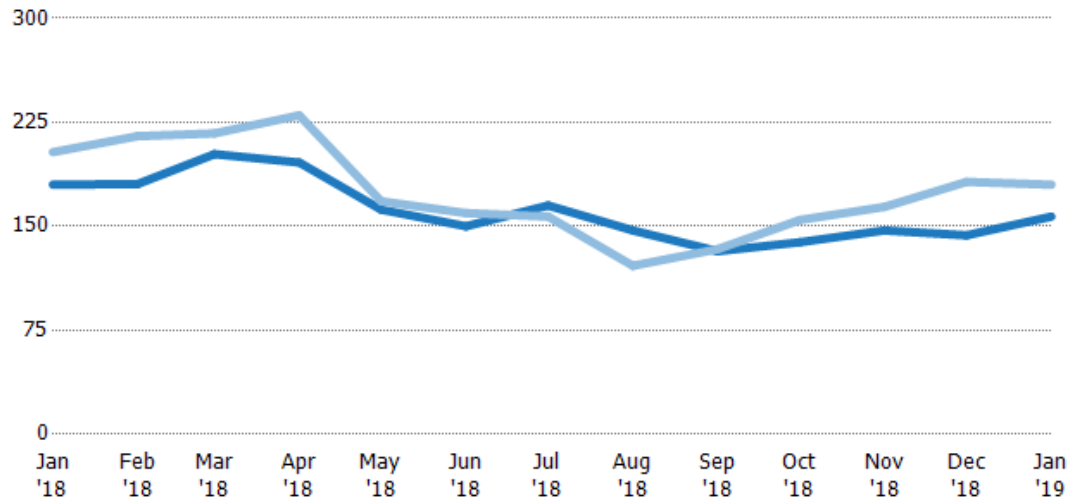
	Jan '18	Feb '18	Mar '18	Apr '18	May '18	Jun '18	Jul '18	Aug '18	Sep '18	Oct '18	Nov '18	Dec '18	Jan '19
Median Est Value	\$201K	\$208K	\$220K	\$222K	\$226K	\$237K	\$241K	\$247K	\$250K	\$258K	\$254K	\$254K	\$258K
Median Listing Price	\$230K	\$232K	\$237K	\$237K	\$243K	\$250K	\$249K	\$250K	\$263K	\$269K	\$283K	\$289K	\$300K
Med Listing Price as a % of Med Est Value	115%	111%	108%	107%	107%	105%	103%	101%	105%	104%	111%	114%	116%

## Median Days in RPR

The median number of days between when residential properties are first displayed as active listings in RPR and when accepted offers have been noted in RPR.

### Filters Used

ZIP: East Dover, VT 05341, South Newfane, VT 05351, Wardsboro, VT 05355, West Dover, VT 05356, Wilmington, VT 05363  
 Property Type: Condo/Townhouse/Apt, Single Family Residence



Month/Year	Days	% Chg.
Jan '19	157	-12.8%
Jan '18	180	-11.5%
Jan '17	204	-10.1%

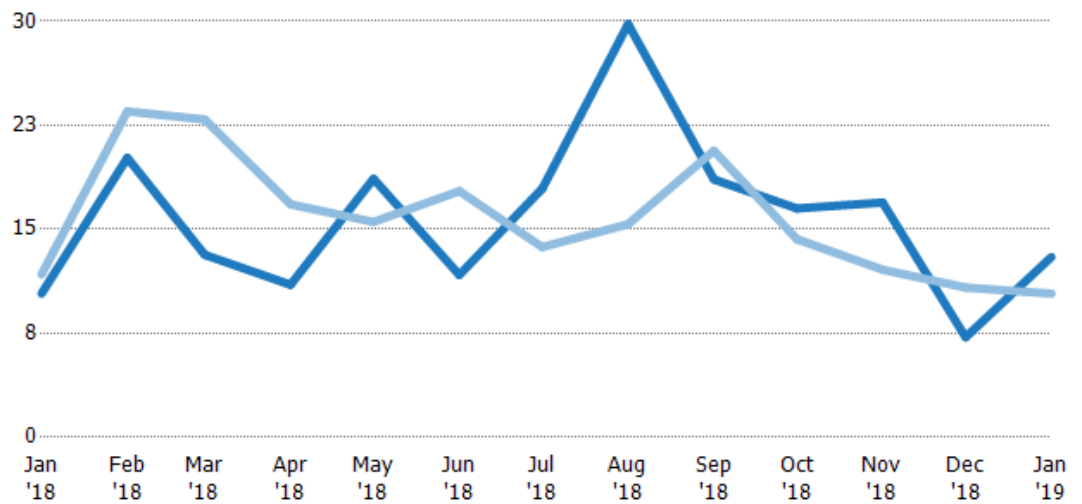
Current Year	180	181	202	196	162	150	165	147	132	139	147	144	157
Prior Year	204	215	217	230	168	160	157	122	134	155	164	182	180
Percent Change from Prior Year	-12%	-16%	-7%	-15%	-4%	-6%	5%	21%	-1%	-10%	-10%	-21%	-13%

## Months of Inventory

The number of months it would take to exhaust active listings at the current sales rate.

### Filters Used

ZIP: East Dover, VT 05341, South Newfane, VT 05351, Wardsboro, VT 05355, West Dover, VT 05356, Wilmington, VT 05363  
 Property Type: Condo/Townhouse/Apt, Single Family Residence



Month/Year	Months	% Chg.
Jan '19	13	25.5%
Jan '18	10.4	-11.8%
Jan '17	11.8	31.9%

Current Year	10.4	20.2	13.2	11	18.6	11.7	17.9	29.8	18.6	16.5	16.9	7.21	13
Prior Year	11.8	23.5	22.9	16.8	15.5	17.8	13.7	15.4	20.7	14.3	12.1	10.8	10.4
Percent Change from Prior Year	-12%	-14%	-43%	-35%	20%	-34%	31%	94%	-10%	16%	40%	-33%	25%

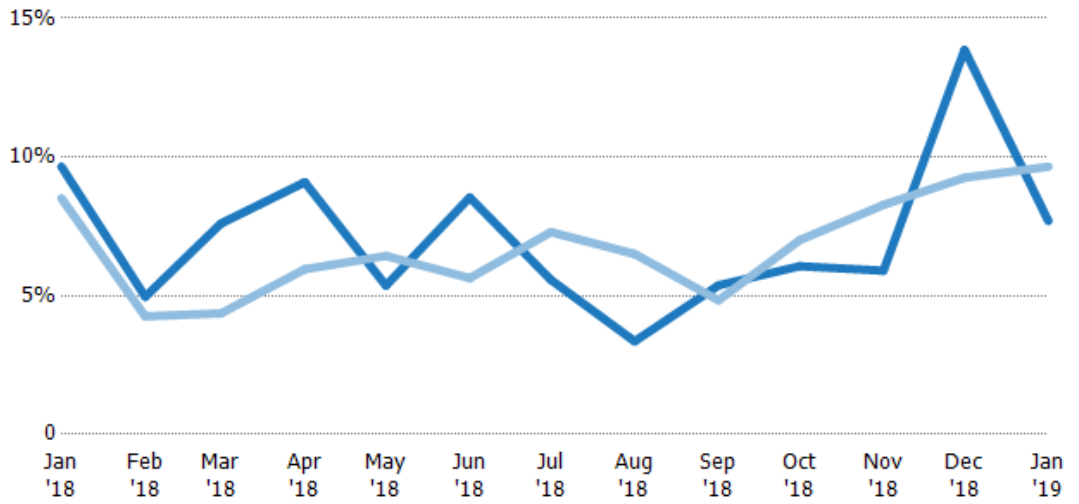
## Absorption Rate

The percentage of inventory sold per month.

### Filters Used

ZIP: East Dover, VT 05341, South Newfane, VT 05351, Wardsboro, VT 05355, West Dover, VT 05356, Wilmington, VT 05363

Property Type:  
Condo/Townhouse/Apt, Single Family Residence



Month/Year	Rate	Chg.
Jan '19	8%	2%
Jan '18	10%	-1.1%
Jan '17	9%	-24.2%

	Jan '18	Feb '18	Mar '18	Apr '18	May '18	Jun '18	Jul '18	Aug '18	Sep '18	Oct '18	Nov '18	Dec '18	Jan '19
Current Year	10%	5%	8%	9%	5%	9%	6%	3%	5%	6%	6%	14%	8%
Prior Year	9%	4%	4%	6%	6%	6%	7%	7%	5%	7%	8%	9%	10%
Change from Prior Year	-1%	-1%	-3%	-3%	1%	-3%	2%	3%	-1%	1%	2%	-5%	2%

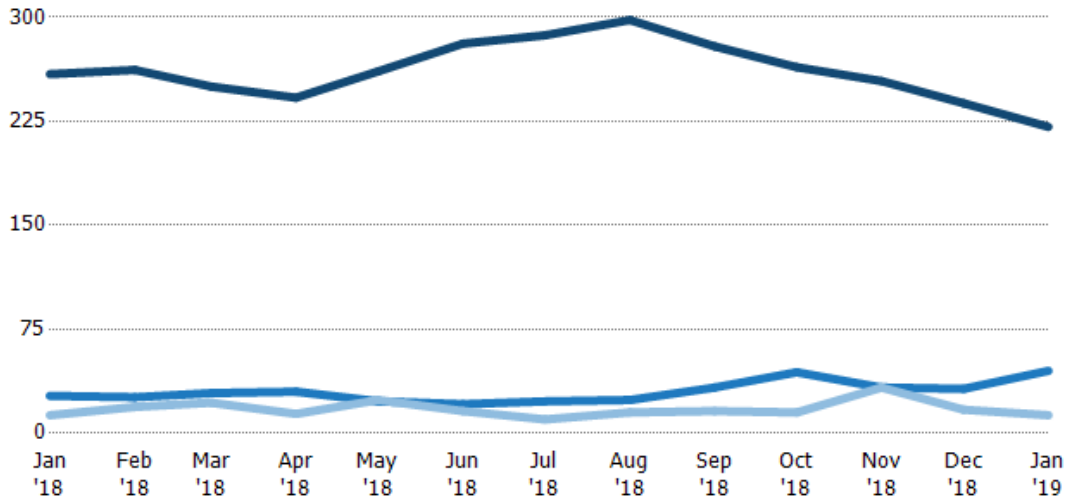
## Active/Pending/Sold Units

The number of residential properties that were Active, Pending and Sold each month.

### Filters Used

ZIP: East Dover, VT 05341, South Newfane, VT 05351, Wardsboro, VT 05355, West Dover, VT 05356, Wilmington, VT 05363

Property Type:  
Condo/Townhouse/Apt, Single Family Residence



	Jan '18	Feb '18	Mar '18	Apr '18	May '18	Jun '18	Jul '18	Aug '18	Sep '18	Oct '18	Nov '18	Dec '18	Jan '19
Active	259	262	250	242	261	281	287	298	279	264	254	238	221
Pending	27	26	29	30	23	21	23	24	33	44	33	32	45
Sold	13	19	22	14	24	16	10	15	16	15	33	17	13

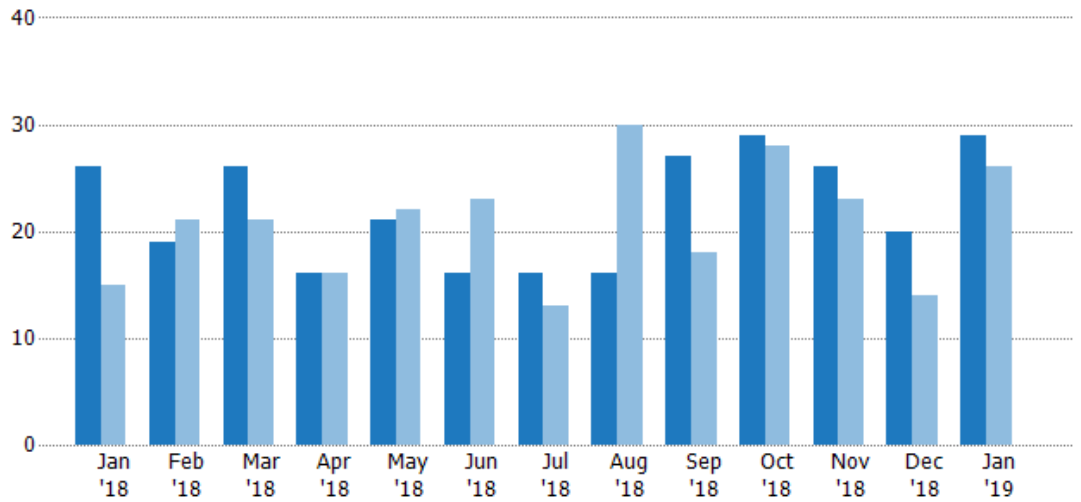
## New Pending Sales

The number of residential properties with accepted offers that were added each month.

### Filters Used

ZIP: East Dover, VT 05341, South Newfane, VT 05351, Wardsboro, VT 05355, West Dover, VT 05356, Wilmington, VT 05363  
 Property Type: Condo/Townhouse/Apt, Single Family Residence

Month/Year	Count	% Chg.
Jan '19	29	11.5%
Jan '18	26	73.3%
Jan '17	15	53.3%



Current Year	26	19	26	16	21	16	16	16	27	29	26	20	29
Prior Year	15	21	21	16	22	23	13	30	18	28	23	14	26
Percent Change from Prior Year	73%	-10%	24%	0%	-5%	-30%	23%	-47%	50%	4%	13%	43%	12%

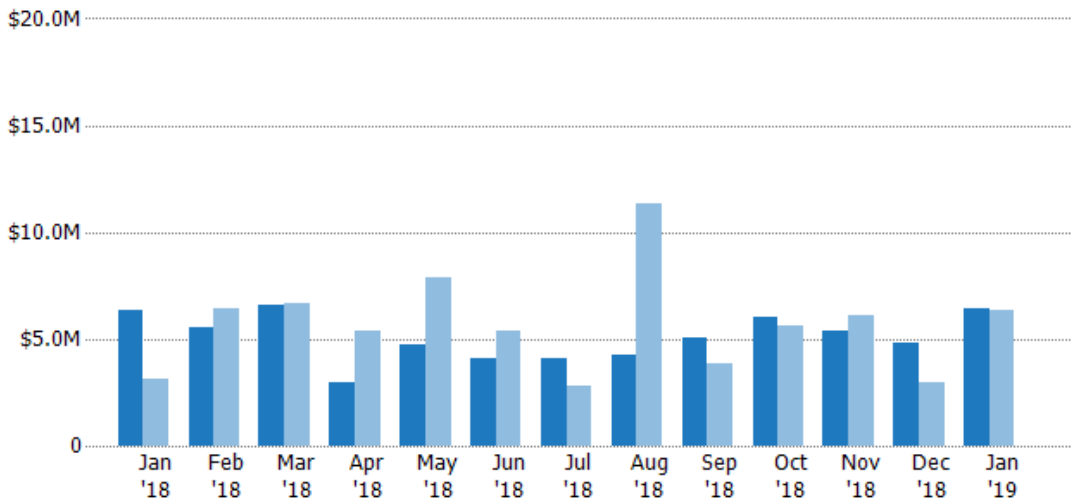
## New Pending Sales Volume

The sum of the sales price of residential properties with accepted offers that were added each month.

### Filters Used

ZIP: East Dover, VT 05341, South Newfane, VT 05351, Wardsboro, VT 05355, West Dover, VT 05356, Wilmington, VT 05363  
 Property Type: Condo/Townhouse/Apt, Single Family Residence

Month/Year	Volume	% Chg.
Jan '19	\$6.45M	1.6%
Jan '18	\$6.35M	101.4%
Jan '17	\$3.15M	109.5%



Current Year	\$6.35M	\$5.52M	\$6.55M	\$2.98M	\$4.72M	\$4.09M	\$4.13M	\$4.23M	\$5.04M	\$6.03M	\$5.37M	\$4.8M	\$6.45M
Prior Year	\$3.15M	\$6.41M	\$6.65M	\$5.36M	\$7.9M	\$5.39M	\$2.78M	\$11.4M	\$3.83M	\$5.62M	\$6.08M	\$2.95M	\$6.35M
Percent Change from Prior Year	101%	-14%	-2%	-44%	-40%	-24%	48%	-63%	32%	7%	-12%	63%	2%



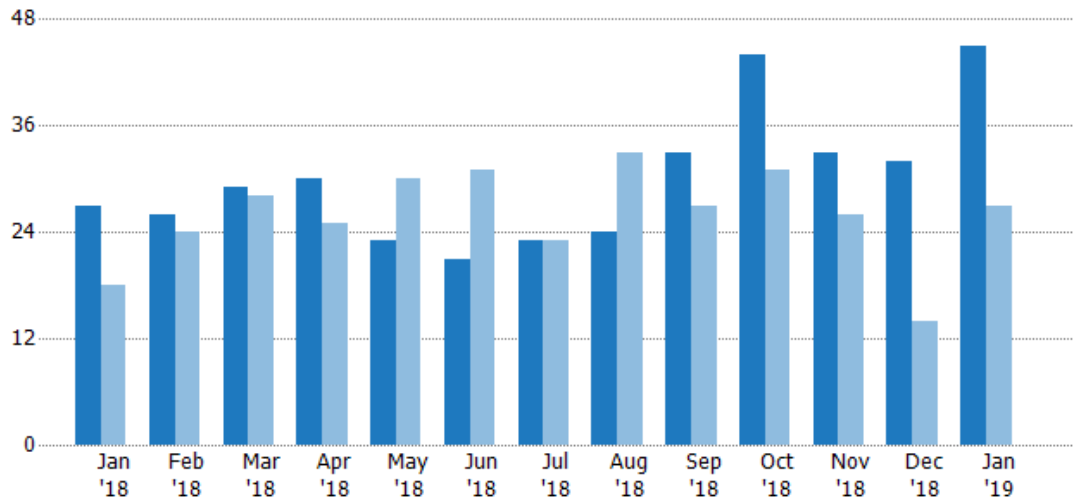
## Pending Sales

The number of residential properties with accepted offers that were available at the end each month.

### Filters Used

ZIP: East Dover, VT 05341, South Newfane, VT 05351, Wardsboro, VT 05355, West Dover, VT 05356, Wilmington, VT 05363  
 Property Type: Condo/Townhouse/Apt, Single Family Residence

Month/Year	Count	% Chg.
Jan '19	45	66.7%
Jan '18	27	50%
Jan '17	18	50%



Current Year	27	26	29	30	23	21	23	24	33	44	33	32	45
Prior Year	18	24	28	25	30	31	23	33	27	31	26	14	27
Percent Change from Prior Year	50%	8%	4%	20%	-23%	-32%	0%	-27%	22%	42%	27%	129%	67%

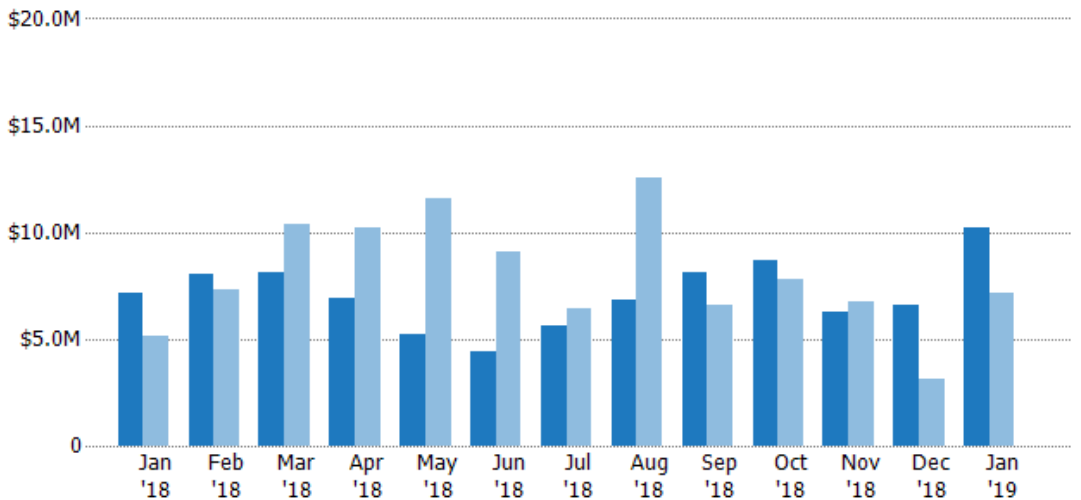
## Pending Sales Volume

The sum of the sales price of residential properties with accepted offers that were available at the end of each month.

### Filters Used

ZIP: East Dover, VT 05341, South Newfane, VT 05351, Wardsboro, VT 05355, West Dover, VT 05356, Wilmington, VT 05363  
 Property Type: Condo/Townhouse/Apt, Single Family Residence

Month/Year	Volume	% Chg.
Jan '19	\$10.2M	43.2%
Jan '18	\$7.14M	39.3%
Jan '17	\$5.12M	49.2%



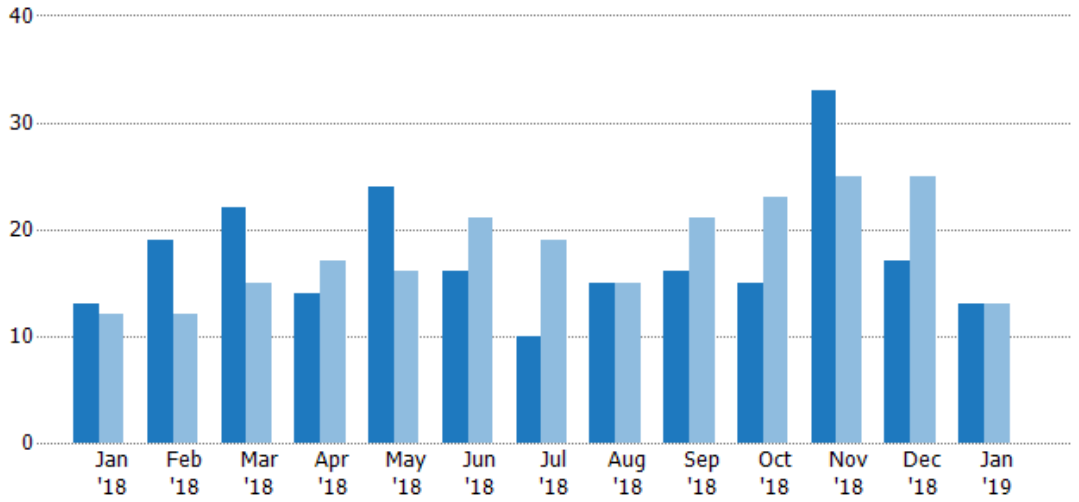
Current Year	\$7.14M	\$8.07M	\$8.14M	\$6.89M	\$5.18M	\$4.41M	\$5.65M	\$6.87M	\$8.08M	\$8.67M	\$6.27M	\$6.6M	\$10.2M
Prior Year	\$5.12M	\$7.34M	\$10.3M	\$10.2M	\$11.6M	\$9.05M	\$6.44M	\$12.6M	\$6.61M	\$7.76M	\$6.78M	\$3.09M	\$7.14M
Percent Change from Prior Year	39%	10%	-21%	-33%	-55%	-51%	-12%	-45%	22%	12%	-8%	113%	43%

## Closed Sales

The total number of residential properties sold each month.

### Filters Used

ZIP: East Dover, VT 05341, South Newfane, VT 05351, Wardsboro, VT 05355, West Dover, VT 05356, Wilmington, VT 05363  
 Property Type: Condo/Townhouse/Apt, Single Family Residence



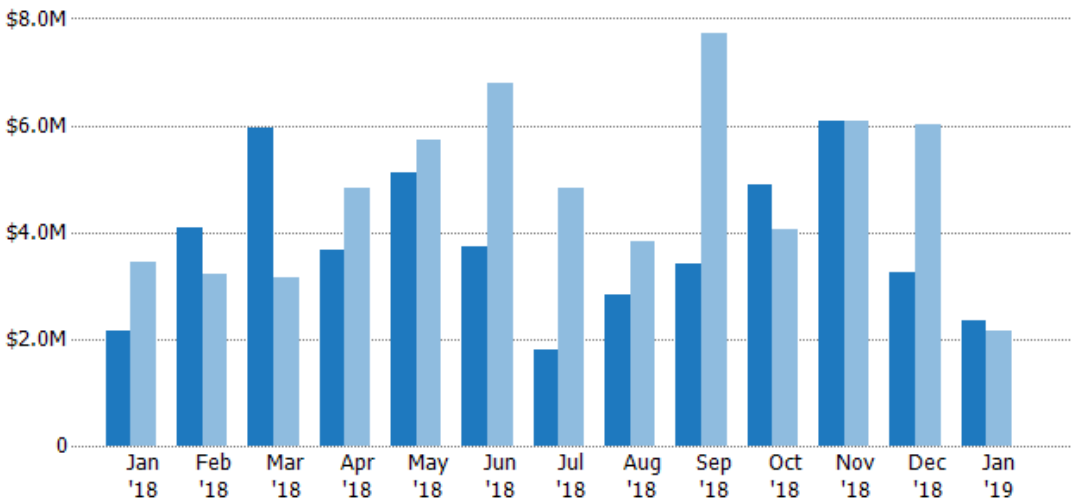
	Jan '18	Feb '18	Mar '18	Apr '18	May '18	Jun '18	Jul '18	Aug '18	Sep '18	Oct '18	Nov '18	Dec '18	Jan '19
Current Year	13	19	22	14	24	16	10	15	16	15	33	17	13
Prior Year	12	12	15	17	16	21	19	15	21	23	25	25	13
Percent Change from Prior Year	8%	58%	47%	-18%	50%	-24%	-47%	0%	-24%	-35%	32%	-32%	0%

## Closed Sales Volume

The sum of the sales price of residential properties sold each month.

### Filters Used

ZIP: East Dover, VT 05341, South Newfane, VT 05351, Wardsboro, VT 05355, West Dover, VT 05356, Wilmington, VT 05363  
 Property Type: Condo/Townhouse/Apt, Single Family Residence



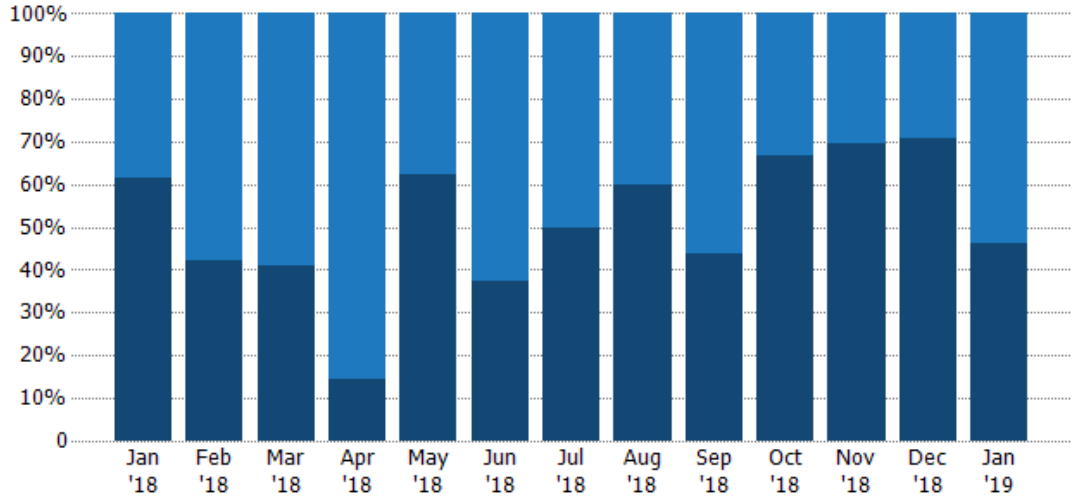
	Jan '18	Feb '18	Mar '18	Apr '18	May '18	Jun '18	Jul '18	Aug '18	Sep '18	Oct '18	Nov '18	Dec '18	Jan '19
Current Year	\$2.16M	\$4.07M	\$5.96M	\$3.68M	\$5.13M	\$3.74M	\$1.79M	\$2.84M	\$3.42M	\$4.88M	\$6.09M	\$3.26M	\$2.34M
Prior Year	\$3.43M	\$3.22M	\$3.14M	\$4.83M	\$5.72M	\$6.8M	\$4.84M	\$3.81M	\$7.71M	\$4.05M	\$6.08M	\$6.03M	\$2.16M
Percent Change from Prior Year	-37%	27%	90%	-24%	-10%	-45%	-63%	-25%	-56%	21%	0%	-46%	8%

## Closed Sales by Property Type

The percentage of residential properties sold each month by property type.

### Filters Used

ZIP: East Dover, VT 05341, South Newfane, VT 05351, Wardsboro, VT 05355, West Dover, VT 05356, Wilmington, VT 05363  
 Property Type: Condo/Townhouse/Apt, Single Family Residence



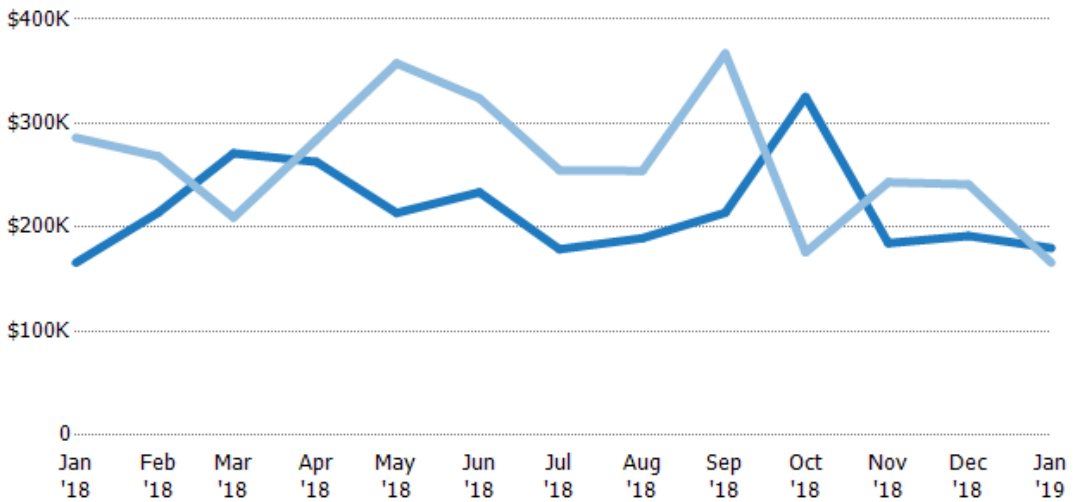
Condo/Townhouse	38%	58%	59%	86%	38%	63%	50%	40%	56%	33%	30%	29%	54%
Single Family Residence	62%	42%	41%	14%	63%	38%	50%	60%	44%	67%	70%	71%	46%

## Average Sales Price

The average sales price of the residential properties sold each month.

### Filters Used

ZIP: East Dover, VT 05341, South Newfane, VT 05351, Wardsboro, VT 05355, West Dover, VT 05356, Wilmington, VT 05363  
 Property Type: Condo/Townhouse/Apt, Single Family Residence



Month/Year	Price	% Chg.
Jan '19	\$180K	8.5%
Jan '18	\$166K	-42%
Jan '17	\$286K	15.1%

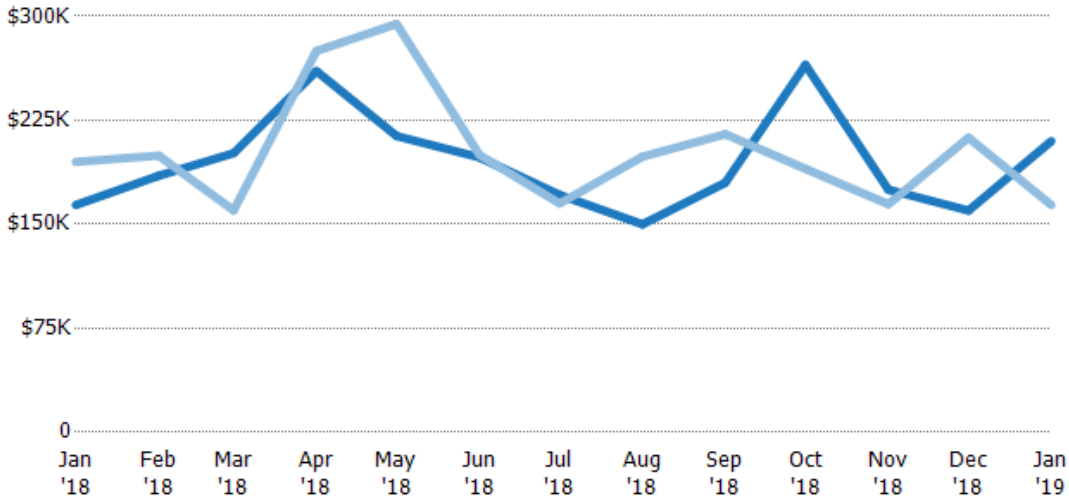
Current Year	\$166K	\$214K	\$271K	\$263K	\$214K	\$234K	\$179K	\$190K	\$214K	\$325K	\$185K	\$192K	\$180K
Prior Year	\$286K	\$268K	\$209K	\$284K	\$358K	\$324K	\$255K	\$254K	\$367K	\$176K	\$243K	\$241K	\$166K
Percent Change from Prior Year	-42%	-20%	29%	-7%	-40%	-28%	-30%	-25%	-42%	85%	-24%	-21%	8%

## Median Sales Price

The median sales price of the residential properties sold each month.

### Filters Used

ZIP: East Dover, VT 05341, South Newfane, VT 05351, Wardsboro, VT 05355, West Dover, VT 05356, Wilmington, VT 05363  
 Property Type: Condo/Townhouse/Apt, Single Family Residence



Month/Year	Price	% Chg.
Jan '19	\$210K	28.1%
Jan '18	\$164K	-15.9%
Jan '17	\$195K	41%

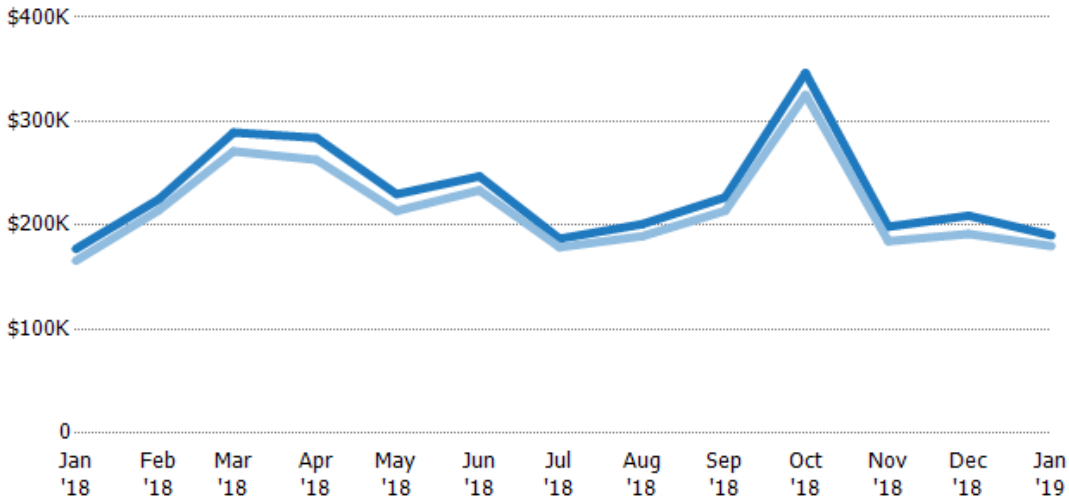
	Jan '18	Feb '18	Mar '18	Apr '18	May '18	Jun '18	Jul '18	Aug '18	Sep '18	Oct '18	Nov '18	Dec '18	Jan '19
Current Year	\$164K	\$185K	\$201K	\$261K	\$214K	\$198K	\$171K	\$150K	\$180K	\$265K	\$175K	\$160K	\$210K
Prior Year	\$195K	\$200K	\$160K	\$275K	\$295K	\$200K	\$165K	\$199K	\$215K	\$190K	\$165K	\$213K	\$164K
Percent Change from Prior Year	-16%	-7%	26%	-5%	-27%	-1%	4%	-25%	-16%	39%	6%	-25%	28%

## Average Sales Price vs Average Listing Price

The average sales price as a percentage of the average listing price for properties sold each month.

### Filters Used

ZIP: East Dover, VT 05341, South Newfane, VT 05351, Wardsboro, VT 05355, West Dover, VT 05356, Wilmington, VT 05363  
 Property Type: Condo/Townhouse/Apt, Single Family Residence



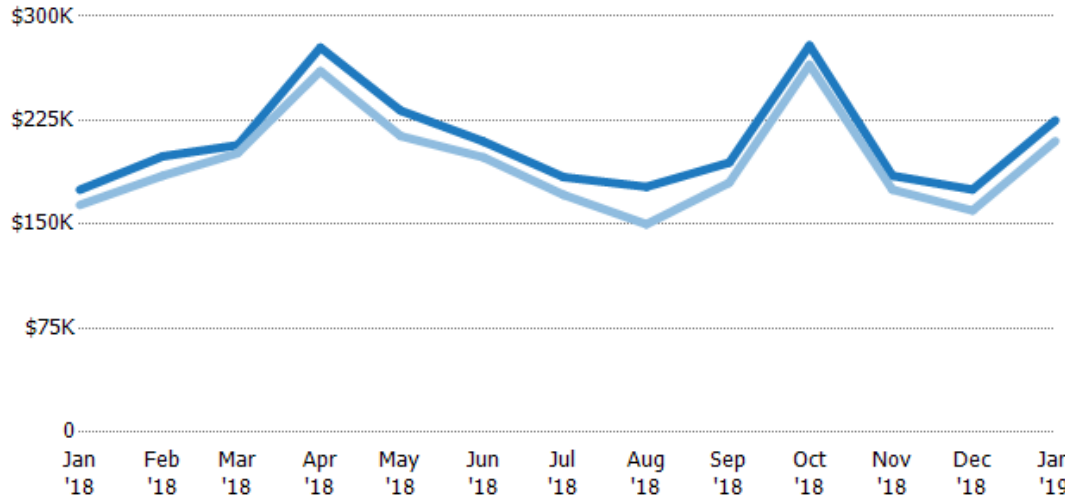
	Jan '18	Feb '18	Mar '18	Apr '18	May '18	Jun '18	Jul '18	Aug '18	Sep '18	Oct '18	Nov '18	Dec '18	Jan '19
Avg List Price	\$177K	\$225K	\$289K	\$284K	\$230K	\$247K	\$187K	\$201K	\$227K	\$347K	\$199K	\$209K	\$190K
Avg Sales Price	\$166K	\$214K	\$271K	\$263K	\$214K	\$234K	\$179K	\$190K	\$214K	\$325K	\$185K	\$192K	\$180K
Avg Sales Price as a % of Avg List Price	94%	95%	94%	93%	93%	95%	96%	94%	94%	94%	93%	92%	95%

## Median Sales Price vs Median Listing Price

The median sales price as a percentage of the median listing price for properties sold each month.

### Filters Used

ZIP: East Dover, VT 05341, South Newfane, VT 05351, Wardsboro, VT 05355, West Dover, VT 05356, Wilmington, VT 05363  
 Property Type: Condo/Townhouse/Apt, Single Family Residence



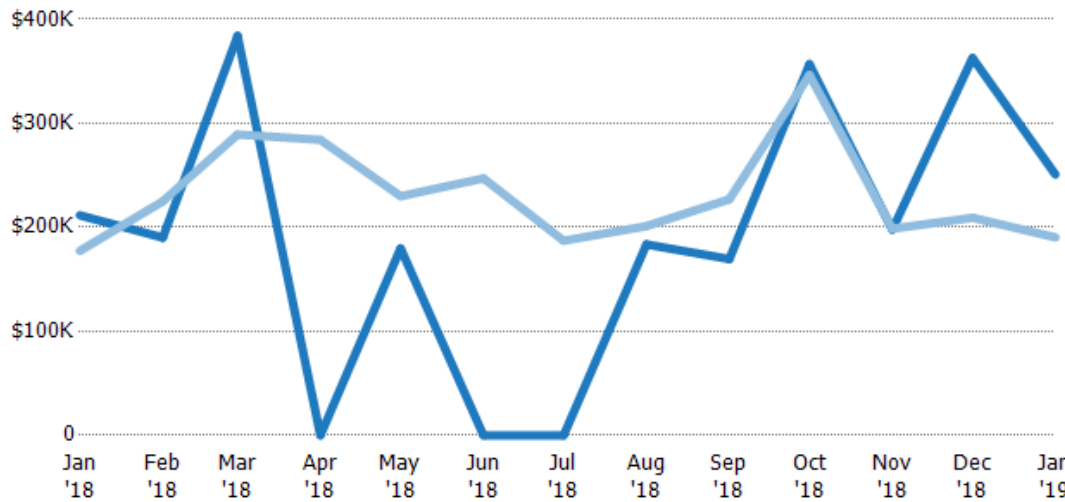
Median List Price	\$175K	\$199K	\$207K	\$278K	\$232K	\$210K	\$184K	\$177K	\$194K	\$279K	\$185K	\$175K	\$225K
Median Sales Price	\$164K	\$185K	\$201K	\$261K	\$214K	\$198K	\$171K	\$150K	\$180K	\$265K	\$175K	\$160K	\$210K
Med Sales Price as a % of Med List Price	94%	93%	97%	94%	92%	95%	93%	85%	93%	95%	95%	91%	93%

## Average Sales Price vs Average Est Value

The average sales price as a percentage of the average AVM or RVM® valuation estimate for properties sold each month.

### Filters Used

ZIP: East Dover, VT 05341, South Newfane, VT 05351, Wardsboro, VT 05355, West Dover, VT 05356, Wilmington, VT 05363  
 Property Type: Condo/Townhouse/Apt, Single Family Residence



Avg Est Value	\$212K	\$190K	\$384K	\$0	\$180K	\$0	\$0	\$184K	\$169K	\$357K	\$198K	\$363K	\$251K
Avg Sales Price	\$177K	\$225K	\$289K	\$284K	\$230K	\$247K	\$187K	\$201K	\$227K	\$347K	\$199K	\$209K	\$190K
Avg Sales Price as a % of Avg Est Value	84%	118%	75%	100%	128%	100%	100%	110%	134%	97%	100%	58%	76%

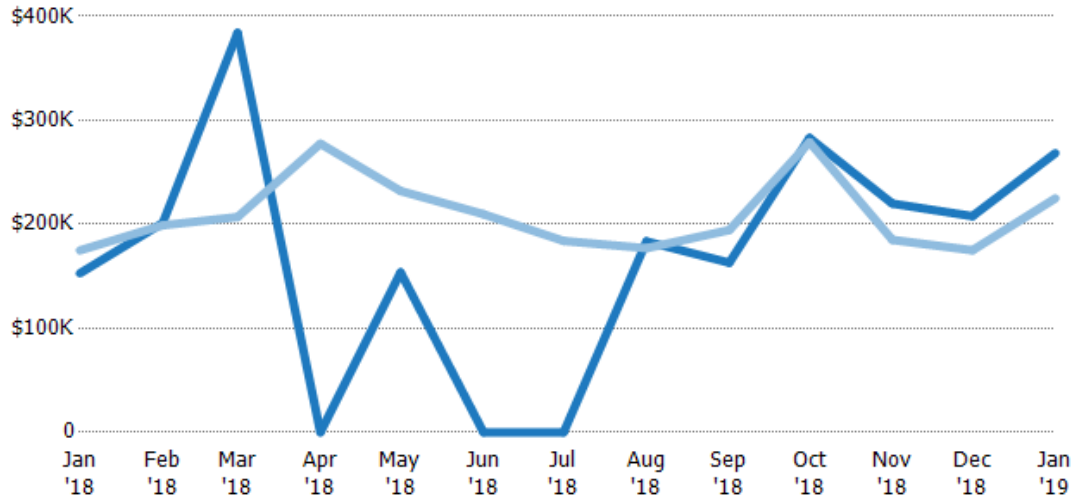
## Median Sales Price vs Median Est Value

The median sales price as a percent of the median AVM or RVM® valuation estimate for properties sold each month.

### Filters Used

ZIP: East Dover, VT 05341, South Newfane, VT 05351, Wardsboro, VT 05355, West Dover, VT 05356, Wilmington, VT 05363

Property Type:  
Condo/Townhouse/Apt, Single Family Residence



Median Est Value	\$153K	\$201K	\$384K	\$0	\$154K	\$0	\$0	\$184K	\$163K	\$283K	\$220K	\$208K	\$268K
Median Sales Price	\$175K	\$199K	\$207K	\$278K	\$232K	\$210K	\$184K	\$177K	\$194K	\$279K	\$185K	\$175K	\$225K
Med Sales Price as a % of Med Est Value	114%	99%	54%	100%	151%	100%	100%	96%	119%	99%	84%	84%	84%